

Wexford County Council

Holmestown Waste Management Facility
W0191-02

Annual Environmental Report 2012



Quality Control Sheet

Publication title Annual Environmental Report for Holmestown Waste Management Facility

Date June 2013

Address: Wexford County Council
County Hall,
Wexford.

Fintan Ryan, Facility Manager

Tel 053-9120922
Mob 087-1227314
Email fintan.ryan@wexfordcoco.ie

Issue Record

Doc No.	Issue No.	Reason for Issue	Author	Approved
HOLM191_EPA_2012 AER	1	Compliance with Waste Licence W191-02	Fran Hobbs Facility Technician Billy Byrne Facility Supervisor	Fintan Ryan Facility Manager

EXECUTIVE SUMMARY

This *Annual Environmental Report* has been prepared for Holmestown Waste Management Facility, Waste Licence W0191-02, for the reporting period from **1 January 2012 to 31 December 2012 inclusive**. The report includes the information specified in Schedule H of the Waste Licence, Content of the Annual Environmental Report, in accordance with Waste Licensing - *Draft Guidance on Environmental Management Systems (EMS) and Reporting to the Agency, 1999*. The main topics discussed within this report are as follows:

- ◆ General Site Information
- ◆ Management and Staffing
- ◆ Reported Incidents and Complaints
- ◆ Development Works
- ◆ Waste Acceptance and Handling
- ◆ Emissions Management
- ◆ Environmental Nuisances
- ◆ Resource and Energy Consumption
- ◆ Environmental Monitoring and Emissions

The waste management facility commenced accepting waste on site on 29 April 2008 in the northern end of the landfill, namely Cells 3 + 4 in Phase 1, being used first. The waste management facility temporarily ceased accepting waste on 21st May 2012. Side slopes of Cells 1, 2,3 and 4 were being used as the active tipping area until 21st May 2012. The total quantity of waste accepted at the facility for the reporting period 1st January to 31st December 2012 was 4,130 tonnes.

An environmental management system was prepared for Holmestown Waste Management Facility in October 2008 consisting of the following elements:

- ◆ Schedule of Environmental Objectives and Targets
- ◆ Environmental Management Plan
- ◆ Corrective Action Procedures
- ◆ Awareness and Training Programme

A number of objectives and targets were developed for the facility which are reviewed and updated where appropriate on an annual basis.

The majority of engineering works associated with the general development of the site including the preparation of Phase 1, Cells 1-4, were completed from 2006-2008. The installation of the twin gas lines from phase 1 to the enclosed gas flare and other minor operational works were completed in 2009.

The enclosed flare was commissioned in August 2009 and put into permanent operation in September 2009. Horizontal and vertical infrastructure has been installed in cells 1, 2, 3, and 4. The volumes of landfill gas extracted varied from 288M³/hr to 338M³/hr during the reporting period. Gas extraction rates were optimised in 2012 to minimise odours. The gas quality remained relatively constant during the reporting period with CH₄ values of approx. 31%.

The construction of the Phase 2 landfill cells commenced in June 2010 and was completed in December 2010.

The Phase 2 landfill footprint encompasses approximately 17,500 m². Lining of the cells involved the placing of approximately 16,600 m³ of engineered clay and the laying and welding of approximately 17,000 m² of HDPE liner. A 500 mm stone drainage blanket was laid on the cell floors with a protective geotextile placed on the cell side slopes.

Wexford County Council carried out a comprehensive environmental monitoring programme during 2012 in compliance with the waste licence conditions. The monitoring programme incorporated Landfill Gas, Leachate Level & Quality, Surface Water Quality, Groundwater Level & Quality, Noise, Dust, Odour, Meteorological and topographical surveys. Results to date suggest that there is no notable pollution from operational activities.

There was a number of recurring category 3 incidents in 2012. These were related to:

- peripheral gas wells;
- groundwater monitoring;
- Noise.

The elevated gas and groundwater results were detected pre-landfilling and are not related to site operations. Reports to date have summarised that the elevated results recorded are due to naturally occurring elements in the site soils.

The elevated noise readings were also not attributed to site operations. Noise reports commented that all the elevated readings were caused by either the N25 or local noises in close proximity to the sampling device (e.g. tractor passing, dog barking etc.).

Reports have been submitted to the EPA that review peripheral gas, groundwater and surface water pond results and provide proposals for control and trigger levels where applicable.

No complaints were received by the EPA during this reporting period.

Contents Page

Annual Environmental Report 2012	1
EXECUTIVE SUMMARY	5
1 INTRODUCTION	3
1.1 General Information	3
1.2 Site information	3
2 MANAGEMENT & STAFFING STRUCTURE	4
2.1 Management and staffing structure for Holmestown Waste Management Facility	4
2.2 Financial provisions	5
2.3 Review of Environmental Liabilities	5
2.4 Environmental Management System	5
3 REPORTED INCIDENTS & COMPLAINTS SUMMARIES	16
3.1 Incidents	16
3.2 Complaints	17
4 DEVELOPMENT WORKS UNDERTAKEN DURING THE REPORTING PERIOD & THOSE PROPOSED FOR THE COMING YEAR	18
4.1 Landfill Engineering Works	18
4.2 Restoration and Aftercare	19
5 WASTE ACCEPTANCE & HANDLING	21
5.1 Waste Activities carried out at the Facility	21
5.2 Waste Acceptance and Handling Procedures	21
5.3 Waste Deposition	21
5.4 Total quantity of wastes accepted on site	22
5.5 Total Quantity of Waste Consigned Off Site	22
5.6 Remaining capacity of the site	23
5.7 Area occupied by waste	23
6 EMISSIONS MANAGEMENT	24
6.1 Landfill Gas Management	24
6.2 Leachate, Groundwater and Surface Water Management	24
7 ENVIRONMENTAL NUISANCES	29
7.1 Review of environmental nuisance control at the facility for the reporting period	29
8 RESOURCE & ENERGY CONSUMPTION	31
8.1 Electricity and Energy Usage	31
8.2 Water	31

8.3	Diesel	31
9	EMISSIONS & ENVIRONMENTAL MONITORING SUMMARY	32
9.1	Emissions and environmental monitoring	32
9.2	Monitoring	33
9.3	Emissions Monitoring	34
9.4	Environmental Monitoring	37

APPENDICES

- A. PRTR 2012
- B. Staff Training
- C. Monitoring Results and Graphs
- D. Meteorological Data Graphs
- E. Summary of waste accepted and consigned off-site
- F. Water Balance Calculation Spreadsheet
- G. Drawings

1 INTRODUCTION

1.1 General Information

The Annual Environmental Report (AER) for Holmestown Waste Management Facility includes as a minimum the information specified in Schedule H of the Waste Licence 191-1, *Content of Annual Environmental Report*.

The AER has been prepared in accordance with the Environmental Protection Agency (EPA) publication '*Waste Licensing – Draft Guidance on Environmental Management Systems (EMS) and Reporting to the Agency, 1999*' and further guidance provided on the EPA website. This document is the fifth AER prepared for the site.

The reporting period for this AER is **1 January 2012 to 31 December 2012 inclusive**.

1.2 Site information

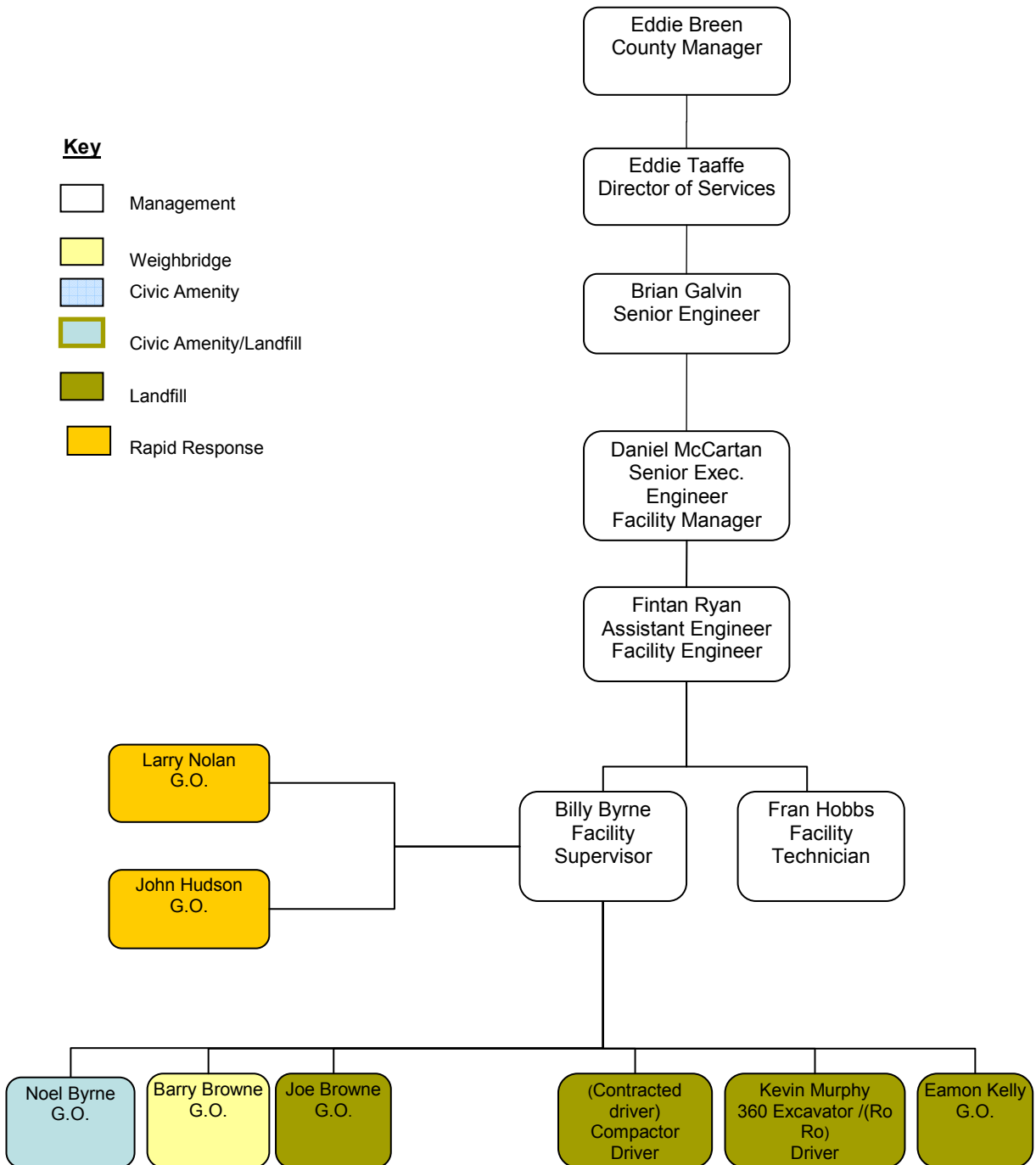
Table 1 Site information on Holmestown Waste Management Facility

HOLMESTOWN WASTE MANAGEMENT FACILITY	
Waste licence register no:	W0191-02 (revised date 24/03/2010)
Name and address of operator:	Wexford County Council County Hall Carricklawn, Wexford.
Name and address of facility:	Holmestown Waste Management Facility Barntown Wexford
Site Description:	<p>Holmestown Waste Management Facility is located within the town lands of Holmestown Great, Glenduff, Bolgerstown, Muchwood and Ballyeaton, approximately 8 kilometres west from Wexford Town (National Grid Reference 2973, 1230). The site which lies to the north of the N25, Wexford to New Ross road comprises an area of approximately 63 hectares of which 15 hectares will be used for landfilling and is situated within a mixed forested plantation of mainly coniferous trees known as Holmestown Wood.</p> <p>The property is bounded by agricultural lands to the North, South, East and West. The land use in the surrounding area is good quality grazing and is intensely farmed to the west, north and east by dairy and livestock farmers. There are a number of dwellings surrounding the site including farmhouses, residences and a nursing home. The site is within the catchment of the Slaney River, and a number of small streams drain the site to the Slaney, less than 2km away. A site location map is provided as Appendix G.</p>

2 MANAGEMENT & STAFFING STRUCTURE

2.1 Management and staffing structure for Holmestown Waste Management Facility

Management structure for Holmestown Waste Management Facility 2011



The Holmestown waste management facility was operated by Wexford County Council during 2012 with consultancy support provided by sub consultants including Fehily Timoney & Company, Irish Biotech Services and Odour monitoring Ireland. Details of the management structure during the reporting period for the facility are provided above.

2.2 Financial provisions

In accordance with Condition 12.1 Wexford County Council paid a sum of €20,771.46 to the Environmental Protection Agency for the management and monitoring of the waste licence.

2.2.1 Provision for the Closure, Restoration and Aftercare

Wexford County Council (WCC), as a Local Authority, has made the necessary provisions, for the development, management, restoration and aftercare of Holmestown Waste Management Facility. WCC has assigned a full time permanent engineer for the management of the facility. Wexford County Council is committed to the ongoing provision of funding for all site development works, environmental monitoring costs and restoration and aftercare works at Holmestown Landfill for the duration of the Waste Licence.

2.2.2 Community Support and Development

An environmental monitoring committee (EMC) was established in July 2005 and includes two members of the Barntown Environmental Alliance, two elected members of Wexford County Council and two Wexford County Council officials. The Committee meets once a month. A community support and development fund has been set up by Wexford County Council.

2.3 Review of Environmental Liabilities

Condition 12.2.2 states the licensee shall arrange for the completion of a Environmental Liabilities Risk Assessment (ELRA) to address the liabilities from past and present activities. Work on the ELRA has commenced and a report shall be submitted to the Agency when completed.

2.4 Environmental Management System

Condition 2.3 requires the licensee to establish and maintain an Environmental Management System (EMS) at the facility. The site environmental management system was prepared in October 2008 and revised in 2010. The EMS consists of the following elements:

- ◆ Schedule of Environmental Objectives and Targets
- ◆ Environmental Management Plan
- ◆ Corrective Action procedures
- ◆ Awareness and training Programme

2.4.1 Environmental Objectives & Targets – Progress

The Environmental Objectives and Targets for the period January 2012 to December 2012 and details of progress made regarding each objective are detailed in Table 2 and 3 hereafter. In summary the objectives and targets established include the following;

- ◆ Objective No 1: Operate facility in accordance with the conditions of the waste licence and promote continual environmental improvement
- ◆ Objective No 2: Improve Environmental Performance of the facility by maintaining a comprehensive monitoring regime
- ◆ Objective No 3: Maximise recycling levels within the civic amenity and site office
- ◆ Objective No 4: Promote energy efficiency on site and in the site offices
- ◆ Objective No 5: Minimisation of Complaints

2.4.2 Environmental Management Plan

An environmental management plan (EMP) was prepared and as part of the EMS in October 2008 and reviewed in January 2010. The EMP comprises information on the following topics:

- ◆ Site description
- ◆ Site infrastructure
- ◆ Types of waste accepted on site
- ◆ Civic amenity site
- ◆ Leachate Collection and treatment Leachate Management System
- ◆ Landfill Gas Abatement Methods
- ◆ Surface water Control Measures
- ◆ Environmental Monitoring
- ◆ Site Security and Site Offices
- ◆ Operational Matters
- ◆ Noise and dust abatement
- ◆ Vermin and litter control
- ◆ Fires
- ◆ Restoration and Aftercare

2.4.3 Corrective action Procedure

Procedures are in place in accordance with Condition 2.3.2.3 of the licence to monitor, measure, audit and record the environmental performance of the environmental management system. These procedures establish how non-conformance within the system is dealt with and how any corrective and preventive action is carried out. A corrective action procedure was prepared in October 2008 and included in the overall EMS report.

2.4.4 Awareness and Training Programme

In accordance with Condition 2.3.2.4 of the licence, an awareness and training programme has been developed to increase environmental awareness among staff and identify training needs of all personnel working at Holmestown waste management facility. The facility manager has overall responsibility for reviewing training needs on an annual basis to ensure that all staff have the necessary skills and level of awareness to carry out their duties to the highest environmental and safety standards. A training schedule summarizing staff training proposals for 2012 is included in Appendix B.

Table 2 Achievements of Objectives and Targets for 2012

Achievement of Objectives and Targets for 2012			
	Comments	Target	Progress
Objective No 1: Operate facility in accordance with the conditions of the waste licence and promote continual environmental improvement			
1.1 Programme of regular inspections of the foul and surface water drainage infrastructure & desludge as necessary,	Weekly inspections of all foul and surface water infrastructure to be carried out.	December 2012	Ongoing
1.2 Investigate means for the reduction of surface water in phase 1	Various liners and materials to be trialed to reduce surface water.	June 2012	Completed
Objective No 2: Improve environmental performance of the facility by maintaining a comprehensive monitoring regime			
2.1 Regularly review environmental monitoring data and monitor changes in trends	Maintain trend analysis graphs for 2013	December 2012	Ongoing
Objective No 3: Maximise recycling levels within the civic amenity and site office			
3.1 Increase public awareness of the recycling facility through advertising	School tours of the facility are scheduled in the coming year, and radio and paper advertising will be continued.	December 2012	Ongoing
	Organise an outside radio programme to	March 2012	Not complete

Achievement of Objectives and Targets for 2012

	Comments	Target	Progress
3.2 Maintain the civic amenity facility in a tidy and orderly manner	highlight civic amenity site and the importance of waste segregation and waste recycling. Daily inspections carried out.	December 2012	Ongoing
Objective No 4: Minimisation of Complaints			
4.1 Effectively deal with complaints	All complaints are recorded in the complaints register and fully investigated with action plans implemented immediately where necessary	December 2012	Ongoing
4.2 Review complaints register and formulate action plans for next period to minimise/reduce complaints	Complaints register reviewed by the facility manager on a regular basis. Issues identified are fully investigated and action plans put in place to reduce or eliminate future complaints	December 2012	Ongoing
4.3 Improve housekeeping practices to minimise the number of complaints received	Litter picking of the site and surrounding areas regularly, onsite noise monitoring to reduce noise impact.	December 2012	Ongoing
4.4 Maintain the site in an orderly and accessible fashion	All staff responsible for upkeep of site	December 2012	Ongoing
4.5 Engage with the local community through meetings	The local community are kept informed through the EMC committee.	December 2012	Ongoing

Achievement of Objectives and Targets for 2012

	Comments	Target	Progress
Objective No 5: To maintain the current site infrastructure			
5.1 Ensure ongoing maintenance of the following site infrastructure: Roads; Surface Water drainage infrastructure; Weighbridge; Site offices and Plant shed; Landfill gas extraction system; Leachate extraction system.	All of the items of existing infrastructure are to be maintained as required and in accordance with suppliers/manufacturers instructions where applicable.	December 2012	Ongoing

Table 3 Objectives and Targets for 2013

Objectives and Targets for 2013			
	Comments	Target	Responsibility
Objective No 1: Operate facility in accordance with the conditions of the waste licence and promote continual environmental improvement			
1.1 Programme of regular inspections of the foul and surface water drainage infrastructure & desludge as necessary,	Weekly inspections of all foul and surface water infrastructure to be carried out.	December 2013	Facility Supervisor
Objective No 2: Improve environmental performance of the facility by maintaining a comprehensive monitoring regime			
2.1 Regularly review environmental monitoring data and monitor changes in trends	Maintain trend analysis graphs for 2013	December 2013	Facility Technician
Objective No 3: Maximise recycling levels within the civic amenity and site office			
3.1 Increase public awareness of the recycling facility through advertising	School tours of the facility are scheduled in coming year, and radio and paper advertising will be continued.	December 2012	Facility Supervisor
	Organise an outside radio programme to highlight civic amenity site and the importance of waste segregation and waste recycling.	Jan 2013	Facility Manager
3.2 Maintain the civic amenity facility in a tidy and orderly manner	Daily inspections carried out.	December 2013	CA staff

Objectives and Targets for 2013			
	Comments	Target	Responsibility
Objective No 4: Minimisation of Complaints			
4.1 Effectively deal with complaints	All complaints are recorded in the complaints register and fully investigated with action plans implemented immediately where necessary	December 2013	Facility Manager
4.2 Review complaints register and formulate action plans for next period to minimise/reduce complaints	Complaints register reviewed by the facility manager on a regular basis. Issues identified are fully investigated and action plans put in place to reduce or eliminate future complaints	December 2013	Facility Manager
4.3 Improve housekeeping practices to minimise the number of complaints received	Litter picking of the site and surrounding areas regularly, onsite noise monitoring to reduce noise impact.	December 2013	All Staff
4.4 Maintain the site in an orderly and accessible fashion	All staff responsible for upkeep of site	December 2013	All staff
4.5 Engage with the local community through meetings	The local community are kept informed through the EMC committee.	December 2013	Facility Manager
Objective No 5: To maintain the current site infrastructure			
5.1 Ensure ongoing maintenance of the following site infrastructure: Roads; Surface Water drainage infrastructure; Weighbridge; Site offices and Plant shed; Landfill gas extraction system; Leachate extraction system.	All of the items of existing infrastructure are to be maintained as required and in accordance with suppliers/manufacturers instructions where applicable.	December 2012	Facility Supervisor

Objectives and Targets for 2013

	Comments	Target	Responsibility

2.4.5 Full title of any procedures developed by the licensee in the year which relates to the facility operation

During the reporting period January – December 2012 no new site procedures were developed at the facility. All procedures are kept on file at the site office and all staff are made fully aware of new/revised procedures as they are developed. The procedures developed for the site are as follows:

- ◆ HWMF001 Waste Acceptance Procedure rev.2
- ◆ HWMF002 Waste Handling Procedure
- ◆ HWMF003 Communications Procedure
- ◆ HWMF004 Environmental Records Procedure
- ◆ HWMF005 Corrective Action Procedure
- ◆ HWMF006 Leachate Handling Procedure
- ◆ HWMF007 Emergency Response Procedures
- ◆ HWMF008 Firewater Risk Retention assessment
- ◆ HWMF009 Entering onto private property procedure
- ◆ HWMF010 Civic Amenity procedures
- ◆ HWMF011 Weighbridge procedures
- ◆ HWMF012 Fire Evacuation - Emergency Procedure
- ◆ HWMF013 Accident and reporting procedure

2.4.6 Report on communication programme

In accordance with Condition 2.4.1 of the waste licence a communications programme has been developed at the facility. Information leaflets have been produced and distributed in 2012 to provide the local community and other interested parties with information on the location of the facility, opening hours, site rules and the types of waste that are accepted for disposal or recycling. An environmental monitoring committee also convene once a month to discuss a range of matters relating to the management and operation of the waste management facility. In addition Wexford County Council provides the following documentation for public viewing at the site office and at the Wexford County Hall:

Table 4 List of records available for public viewing in relation to the landfill

List of records available for public viewing
Waste Licence W00191-2
Waste Licence application
Correspondence with the EPA
Incident / complaints records
Audit records
Waste acceptance records
Rejected waste records

All monitoring records
Surface water inspection forms
Leachate removal records
Bird / vermin control reports

3 REPORTED INCIDENTS & COMPLAINTS SUMMARIES

3.1 Incidents

A recurring category 3 incident which was initially reported to the EPA on 11 January 2008 relating to the detection of carbon dioxide and methane gas at a number of gas monitoring boreholes continued to be in exceedence of its trigger level during the period January to December 2012.

Monitoring of gas wells was carried out between September 2007 and March 2008. Naturally occurring methane and carbon dioxide were regularly detected in a number of boreholes located outside the perimeter of the constructed lined cells during routine monitoring on site prior to waste acceptance. As a means of investigating these recurring gas levels the EPA requested that an investigation be carried out on site, this was undertaken between March and April 2008.

The investigation found existing levels of naturally occurring methane and carbon dioxide in the area as a result of the breakdown of organic material in the soil. An assessment was carried out and the risk associated with naturally occurring methane and carbon dioxide on the site was deemed not to be significant due to the underlying geology of the area. The presence of clay which has a low permeability acts as a natural containment material preventing gas from travelling through the ground for any considerable distance. The cells are also fully lined with a double liner system consisting of a geocomposite liner on top of an engineered clay liner. A number of recommendations were made to monitor and manage the landfill in the absence of perimeter gas wells through maintaining a negative pressure within the waste body. Two reports were submitted to the EPA during April and December 2008 entitled:

- ◆ Investigation of Naturally Occurring Background Gas Levels at Holmestown Landfill – Risk Assessment and Recommendations. (Revision 1)
- ◆ Investigation of Naturally Occurring Background Gas Levels at Holmestown Landfill – Risk Assessment and Recommendations – Trace Gas Analysis. (Revision 2)

A review of the peripheral gas borehole results as recommended in previous reports has been completed. The review incorporates all results to the end of 2009. This report will form the basis for future works/monitoring

Another recurring category 3 incident was the exceedence of trigger levels for groundwater boreholes. Results were outside Interim Guideline Values in a number of the on-site groundwater boreholes tested. The elevated values date back to pre-landfilling and have been recorded both upstream and downstream of the landfill footprint. Similar to gas readings the elevated results are prevalent downstream in the north east corner where the bulk of the on site excavation works were carried out and appear to be due to a non-landfill source in the soil. The main soil mass is low permeability clay with sand and gravel lenses. Groundwater movement in the soil zone is relatively slow resulting in low flows. This enables emissions to build up locally around a source as appears to be indicated from the results.

Subsequent to ongoing interim trigger level exceedences, a report reviewing all groundwater data to the end of 2009 was completed and submitted to the EPA.

Exceedences of noise trigger levels were also noted during the reporting period. The excessive noise was attributed to traffic on the N25 roadway or local noise sources (dogs barking etc.) during monitoring for all the monitoring locations that tested above the licence limit.

3.2 Complaints

No complaints were received by the EPA during this reporting period.

4 DEVELOPMENT WORKS UNDERTAKEN DURING THE REPORTING PERIOD & THOSE PROPOSED FOR THE COMING YEAR

4.1 Landfill Engineering Works

Condition 3.1 of the licence states that the licensee shall establish all infrastructure referred to in the licence prior to the commencement of the licensed activities or as required by the waste licence. In accordance with Condition 3.2 proposals for all Specified Engineering Works reports (SEW's) have been submitted to the Agency for approval. A list of these reports to date is as follows. Due to a numbering error SEW No. 7 was omitted i.e. the follow on report from SEW No. 6 is in fact SEW No. 8.

- SEW Report No. 1: Development of the facility including preparatory works and lining – October 2005
- SEW Report No. 2: Installation of the Civic Amenity Facility – October 2005
- SEW Report No. 3: Installation of the Landfill Gas System – October 2005
- SEW Report No. 3A: Installation of the Landfill Gas System (Revised) – September 2007
- SEW Report No. 4: Installation of the Leachate Management System – October 2005
- SEW Report No. 5: Installation of the Groundwater Control Infrastructure – October 2005
- SEW Report No. 6 Installation of the Surface Water Management Infrastructure – October 2005
- SEW Report No. 8: Installation of Clay Liner – February 2007
- SEW Report No. 9: Access to Additional Cells – July 2008
- SEW Report No. 10: Landfill Cell Development Phase 2 – April 2009

4.1.1 Completed Engineering Works to end of 2012

The majority of engineering works associated with the general development of the site including the preparation of Phase 1, Cells 1-4, were completed during 2006 and 2007. During the latter part of 2008 engineering works associated with the completion of contract 3 and snagging works were completed. During 2009 the installation of the twin gas lines from phase 1 to the enclosed gas flare and other minor operational works was completed. Landfill Cell Development Phase 2 commenced in June 2010 and was completed in December 2010.

A description of other minor engineering works completed at Holmestown Waste Management facility during 2012 is as follows:

Table 5 Summary of Development Works 2012

Start Date	Development Works
February	○ Maintenance works to on site surface water streams and channels
July/ August	○ Seal west slopes facing phase 2 development

September	<ul style="list-style-type: none"> ○ Modification vertical pipe work for landfill gas infrastructure
November	<ul style="list-style-type: none"> ○ Maintenance works to site roads

4.1.2 Proposed Engineering Works 2013

A description of engineering works proposed at Holmestown Waste Management Facility for 2013 is as follows:

Table 6 Summary of Proposed Development Works 2013

Start Date	Development Works
May	<ul style="list-style-type: none"> ○ Installation of periphery LLDP membrane to interface between phase 1 and 2.
August	<ul style="list-style-type: none"> ○ Maintenance works to site roads

4.2 Restoration and Aftercare

Acceptance of waste to Holmestown commenced during April 2008 with the placement of waste into Cells 3 and 4 of Phase 1. Side slopes to Cells 1,2,3,4 were being used as the active tipping areas at the up to the temporary closure of the landfill in May 2012. In accordance with section 5.7.5 of the licence, permanent capping is not programmed until 24 months after the cells are filled to the required level. An interim clay cap has been installed where applicable. No permanent capping works were carried out on site during 2012.

5 WASTE ACCEPTANCE & HANDLING

5.1 Waste Activities carried out at the Facility

In accordance with Schedule A of the Licence, Holmestown Waste Management facility is licensed to accept 80,000 Tonnes of waste per annum. This includes 55,000 Tonnes of non-hazardous household and commercial waste, 5,000 Tonnes of waste for composting, 8,000 Tonnes of construction and demolition waste for recovery and 12,000 Tonnes of household and commercial waste for recovery.

Both waste recovery and disposal operations took place on site at Holmestown Waste Management facility during 2012.

5.2 Waste Acceptance and Handling Procedures

Holmestown Waste Management facility opened in April of 2008, as a replacement landfill for Killurin which ceased accepting waste on site at the end of June 2008. The facility temporarily stopped accepting waste on 21st May 2012. Waste has been placed in cell's 1, 2, 3 & 4 of Phase 1 which is at the northern end of the landfill footprint.

Each waste stream is characterised in accordance with European Waste Catalogue (EWC) codes, and on site verification is carried out to confirm waste types. A waste acceptance procedure and a waste handling procedure have been developed. Both procedures are kept on file at the site administration building.

If any waste load is found to contain a waste type not acceptable for disposal or recovery at the facility then the consignment is rejected and a waste rejection form completed. The waste collector will return the load to an appropriate waste disposal/recovery facility and the environmental waste enforcement section of Wexford County Council is informed. A written record of each load of waste entering and leaving the facility including weights is kept in the weighbridge office.

5.3 Waste Deposition

Waste is brought to the active tipping face by refuse transport vehicles. Each vehicle is reversed to the tipping face and the load ejected / tipped out. The waste is spread out and compacted into the active tipping area through the use of a steel wheeled compactor and covered as soon as possible with suitable material. The compaction process is a continuous one and the compactor is in operation almost continuously during site operating hours. Several passes are made over the consignment of waste prior to pushing the remnants over the Tipping Face itself. These passes are necessary to achieve the required optimum compaction of 0.8 tonnes/cubic meter. The deposition of the remnants of the consignment, i.e. a small fraction of the consignment, over the Tipping Face gradually extends the Tipping Face into the active cell thereby filling it.

Hessian matting and woodchip / sand mix are used to cover the working area at the end of each day as per the Procedure for Waste Handling (*HWMF 002*). Wood chip / sand mixture is used for the purposes of cover material at the facility. Advantages of the woodchip / sand include: excellent trafficking qualities, low road maintenance, odour abatement and it is suited to the use of the landfill as a bioreactor. At the end of each day a layer of cover material is placed over any exposed hessian matting to provide adequate protection.

In accordance with Condition 5.4 of the licence only one working face is operational at any one time with a maximum working face height of 2.5m after compaction. The working face is kept to less than 25m wide with a slope no greater than 1 in 3.

All waste consigned off-site during 2012 was disposed of to facilities licensed or permitted to accept or treat that waste. Transport of waste was carried out in accordance with the *Waste Management (Collection Permit) Regulations, SI 820 of 2007, and Amendment Regulations, SI 87 of 2008* as appropriate.

5.4 Total quantity of wastes accepted on site

The total quantity of waste accepted at the facility for the reporting period 1st January to 31st December 2012 was 4,130 tonnes.

A summary of the total quantity of waste accepted at the facility for the reporting period is presented in Appendix E.

A summary of the total quantity material used for cover material and construction of internal roads and installation of horizontal and vertical pipework used in the landfill for the reporting period is presented in Appendix E.

5.4.1 Statement on the achievement of the waste acceptance and treatment obligations

In June 2010 a revised waste acceptance procedure was developed for the acceptance and handling of all wastes at HWMF. This procedure includes details of the treatment of all waste carried out in advance of acceptance at the facility. It also includes methods for the characterisation, classification and coding of waste.

Facility records from 1st January 2012 to 31st December 2012 show that 59.64% by weight of municipal solid waste accepted for disposal to the body of the landfill comprised of biodegradable municipal waste. This figure has exceeded the maximum allowable figure of 47%, however Wexford County Council endeavour to comply with this licence requirement in future reporting periods.

5.5 Total Quantity of Waste Consigned Off Site

The total quantity of waste consigned off site at Holmestown Waste Management facility for the reporting period 1st January to 31st December 2012 was 1370.18 Tonnes.

A summary of the total quantity of waste consigned off site for the reporting period is presented below in Appendix E

The total volume of leachate sent off site for treatment at Enniscorthy and Wexford Wastewater Treatment Works was 18,108 tonnes.

5.6 Remaining capacity of the site

Waste was first accepted on site at Holmestown Waste Management facility during April 2008. The site is designed to provide for the disposal and recovery of a maximum of 80,000 tonnes of waste per annum comprising non-hazardous household and commercial waste, waste for composting, construction and demolition waste for recovery and household and commercial waste accepted for recovery at the civic waste facility and materials recovery facility.

Wexford County Council intention, in planning, constructing and operating the Holmestown Landfill Facility is to provide a void space for 900,000 tonnes of compacted municipal solid waste and to place same in accordance with the profile set by An Bord Pleanála grant of planning and the EPA licence.

Based on an allowance for 25% for daily cover material and achieving 0.8 tonnes/m³ compaction ratio an overall volume capacity requirement of 1,406,250 cubic meters is estimated over the operational life of the facility.

The site will be in filled and restored on a phased basis over a twenty year period with each phase lasting approximately 2 years. The waste figures allow for a reduction in waste quantity to comply with the Landfill Directive. A topographical survey carried out in January 2011 showed that the volume of waste present within Cells 1, 2, 3 and 4 was approximately 72,799m³.

5.7 Area occupied by waste

A topographical survey completed in March 2011 showed the area of waste present within Cells 1, 2, 3 and 4 to be 18132m². The overall area where waste will be land filled is approximately 15.2 ha (152,000 m²).

6 Emissions Management

6.1 Landfill Gas Management

The installation of the landfill gas control system is an ongoing process and will develop further as each of the cells is filled with waste. Horizontal and vertical infrastructure is placed concurrent with waste. The pipe work systems are then connected to a 500m³ enclosed gas flare. The enclosed flare was commissioned in August 2009 and put into permanent operation in September 2009 replacing the temporary open flare with carbon filter which operated from January to August 2009.

More detailed information on the landfill gas extraction system installed to date on site can be found in the following report which can also be viewed on file in the site office:

- *SEW Report No. 3A: Installation of the Landfill Gas System (Revised) which was submitted to the EPA in September 2007*

6.1.1 Estimated annual and cumulative quantities of landfill gas emitted from the site.

The volumes of landfill gas extracted varied from 288M³/hr to 338M³/hr during the reporting period. Gas extraction rates have been maximised to minimise odours. The gas quality varied during the reporting period from 26.6% CH₄ up to 32.6% CH₄. The total volume of CH₄ flared off on site during 2012 was 813,762 M³ recorded by SCADA system. The cumulative volume from commencement of flaring to the end of 2012 was 2,316,645 M³.

Further gas modelling will commence when the landfill is established. We have installed infrastructure in accordance with best practice to ensure that gas capture is maximised. We are confident from the absence of odour in and around the site and by maintaining a negative pressure in the landfill that gas capture at HWMF is satisfactory.

6.2 Leachate, Groundwater and Surface Water Management

6.2.1 Leachate

Leachate is generated by incident rainfall seeping into the landfill and becoming contaminated by contact with the waste product, and by the decomposition of the waste itself. Other potential sources of leachate generation, such as groundwater and surface water ingress are prevented from entering the waste fill areas through a number of site specific engineering works.

Leachate from Cells 1, 2, 3 & 4 is pumped directly to the leachate treatment plant using the in cell submersible pumps. A road tanker then removes the treated leachate from the leachate treatment plant balancing tank to Wexford Town Wastewater Treatment Plant for final treatment and disposal.

The on-site leachate treatment plant was commissioned during 2009 and began to accept leachate directly from Phase 1 for treatment. The treatment plant provides a capacity of approximately 1200 m³, equivalent to a process retention time of 15 days at the maximum flow (average estimate is 50m³ per day, estimated peak flow is 80m³ per day). The plant comprises of the following main elements, together with ancillary pipe work to convey the leachate between tanks:

- ◆ 2 x Sequencing batch reactor (SBR);
- ◆ Treated leachate balance tank (TLBT);
- ◆ Raw leachate feed pump;
- ◆ Venturi aerators;
- ◆ Decant pump;
- ◆ Final discharge pump;
- ◆ Alkali dosing facilities; and
- ◆ Nutrient dosing facilities.

Monthly volumes of leachate tankered off site are presented in Table 7 below.

Table 7 Leachate volumes removed from site in 2012

Month	Volume (m ³)
January	931
February	675
March	727
April	712
May	1035
June	2,248
July	1,692
August	3,354
September	696
October	1,843
November	1,889
December	2,306
Total	18,108

Integrity testing of the leachate storage tanks was carried out during August 2011. The tests were carried out in accordance with the procedure described in the *Civil Engineering specification for the Water Industry (CESWI)*. All tanks assessed passed the integrity test. These tanks are due for retesting during 2014.

6.2.2 Groundwater

Condition 3.10 of the licence states that effective groundwater management infrastructure shall be provided and maintained at the facility during construction, operation, restoration and aftercare of the facility. As a minimum, the infrastructure is required to be capable of the following:

- Protection of groundwater resources from pollution by the waste activities
- Protection of other infrastructure, such as the liner; from any adverse effects caused by groundwater.

At Holmestown Waste Management facility the cell formation levels have been designed so that the formation levels will be a minimum of 2m above the expected winter water-table levels. The nature of the excavation elsewhere on site is shallow so groundwater is not expected to be encountered.

Groundwater resources are protected from waste related pollution by the construction of a quality-assured composite lining system, which comprise the following:

- ◆ 1,000 mm compacted engineered clay with hydraulic conductivity (k) $\leq 1 \times 10^{-9}$ m/sec; overlain by
- ◆ 2 mm fully-welded HDPE liner.

Leachate arising from waste activities is contained within the landfill by the lined system and conveyed to the on-site leachate treatment plant via sealed pipe systems. Treated leachate is currently tankered off site to Wexford Town Wastewater Treatment Plant for final treatment and disposal. Effluent will eventually be removed from site via a pumped rising main to Wexford Wastewater Treatment Plant as outlined in *Specified Engineering Works Report No. 4*. There is no discharge to groundwater from any aspect of the landfill development.

Foul water drains to a proprietary wastewater treatment plant on site. Effluent from the wastewater treatment plant discharges to the leachate treatment plant.

6.2.3 Surface Water

In accordance with the licence conditions (condition 3.10), surface water is collected on site via a network of drains, and is fed into the surface water collection pond to the north of the site at SWP1. The water settles in the pond and is then released to a petrol interceptor tank via SWP2. From there the surface water flows in an easterly direction to the stream on the east of the site, and enters the stream at SW4.

The following describes the various aspects of surface water collection systems:

- All clean surface water from paved roads and roofed areas on site drains into the constructed surface water drainage system and drains to the surface water pond via carrier pipes and open channels.
- Surface water from the civic amenity area is collected in gullies, and drains and diverted to the leachate treatment plant via a carrier pipe.

- Surface water run-off from the screening berm at the north end of the site is collected by a number of embankment swales and directed to the surface water pond.
- Surface water in constructed landfill cells in which the filling with waste has not yet commenced is pumped to the surface water pond.

The surface water pond located to the north east of the landfill is lined with a 1 m thick layer of clay, engineered to ensure a maximum permeability of 1×10^{-9} m/sec. The pond is designed to attenuate peak flows up to a 1 in 100 year return period, and to fully contain peak flows up to a 1 in 5 year return period. The pond is designed to cater for the worst case scenarios during the lifetime of the entire landfill. The allowable discharge from the pond has been reduced below baseline flow levels in order to enable water settlement and achieve suspended solids content less than 25 mg/l.

6.2.4 Water Balance Calculations

The objective of the assessment of water balance calculations is to understand and predict the liquid inputs and outputs of the facility. In order to predict the approximate leachate volumes which would be generated on-site water balance calculations have been calculated for the period 1st January 2012 to 31st December 2012 to estimate the approximate volumes of leachate that would have been generated during the reported period.

The water balance addressed the volume of leachate generated at the site including the estimated annual infiltration of rainfall. The water balance methodology is described below and the calculation is shown in appendix F.

The water balance calculations are based on the methodology specified in the EPA's Landfill Site Design Manual. The calculation used is as follows: -

$$L_o = [ER(A) + LW + IRCA + ER(I)] - [aw]$$

L_o = leachate produced (m³)

ER = effective rainfall (m) (Use actual rainfall (R) for active cells)

A = area of cell (m²)

LW = liquid waste (m³)

IRCA = infiltration through restored and capped areas (m)

I = surface area of lagoon (m²)

a = absorptive capacity of new waste (m³/t)

w = weight of waste deposited (t/a)

An absorptive capacity of 0.025 m³ per tonne was assumed.

The meteorological data used was obtained from the nearby Met Eireann meteorological station at Johnstown Castle. The total rainfall from 1st January 2011 to the 31st December 2011 was approximately 1167 mm. Meteorological data is presented in Appendix D.

The landfill areas included in the calculations were the active fill and temporary capped areas. Actual (total) rainfall rates were used for the active fill areas. As the active area of side slope cells 1-4 was uncapped during part of 2012 it is estimated that 100% of this rainwater would have entered the waste body. An 80% infiltration rate was used for temporary restored areas. This is in accordance with the EPA Landfill Site Design Manual. An absorptive capacity of 0.025m³ per tonne was assumed.

The active and temporary areas for waste placement in 2012 are presented in Table 8 below.

Table 8 Active and temporary areas in 2012

Year	Months	Waste Placement location	Active Area (m ²)	Temp Cap (m ²)
2012 (1st Jan to 31st May)	5	1 (Cell 1,2,3,4, 1b)	6000	13050
2012 (1st Jun to 31st Dec)	7	1 (Cell 1,2,3,4, 1b)	0	18000

The estimated volume of leachate generated for the period 1st January 2012 to the 31st December 2012 is 17663m³ (a calculated summary is included in Appendix F). During the same period 18107 m³ of leachate was removed from the site for treatment in the waste water treatment plant at Enniscorthy and Wexford. A monthly breakdown of leachate volumes removed is presented in table 7.

As stated above the water balance calculations are based on the EPA's Landfill Site Design Manual. The manual states that water balance calculation of an active landfill will have an accuracy factor of 2 approx. The estimated volume of leachate generated shows an over estimation of 3% of what was actually removed for treatment. Based on this estimate leachate management at HWMF appears satisfactory.

7 ENVIRONMENTAL NUISANCES

7.1 Review of environmental nuisance control at the facility for the reporting period

Condition 8.15 of the Waste Licence states that the licensee will inspect the facility and its immediate surrounds for nuisances caused by litter, vermin, birds, flies, mud, dust and odours. Nuisances at Holmestown Waste Management facility are logged in a weekly tick-box report and action is taken immediately to address any identified issues. Table 9 below summarises the measures implemented on site to combat environmental nuisances during 2012.

Condition 7.3 of the Waste Licence states that litter fencing shall be installed and maintained around the perimeter of the active tipping area prior to the disposal of waste in any cells and that all litter control infrastructure shall be inspected on a daily basis. A litter fence was maintained around Cells 1, 2, 3 & 4 during the filling period. The litter control infrastructure was inspected on a daily basis and any defects remedied immediately. Any loose litter or other litter identified on site is removed and disposed of in an appropriate manner and all vehicles delivering waste to or removing waste from Holmestown Waste Management facility are appropriately covered.

Table 9 Environmental Nuisance Control 2012

Nuisance	Mitigation Measures in Place
Birds	<i>Jim O Connor</i> –contracted for bird control, presented on site on a daily basis as required. Birds of prey used to control birds. Daily log kept and weekly report produced. Reports kept at site office.
Vermin	<i>QPL Hygiene</i> . Permanent bait points set up on site (internal and external). Inspections carried out on a monthly basis. If infection found then weekly inspections until rodent free. Monthly reports produced and kept at site office.
Litter	Daily litter picking and litter inspections are carried out as CA site. Inspection log kept at site office. Litter fencing has been erected around Cells 1, 2, 3 & 4. Permanent litter fencing was erected around Phase 2
Flies	<i>QPL Hygiene</i> employed to control flies.. If flies present then treated through spraying. Reports kept in site office.
Odour	Fixed monitoring points established both on and off site and assessed as required. All waste was covered with a hessian material at the end of each day and an odour neutralising agent was used on site when deemed necessary. Odour inspections adhere to recommendations from the Office of Environmental Enforcement's method of assessment of odours.

Condition 11.5 of the licence states that prior to the commencement of waste disposal, the licensee shall submit to the Agency for its agreement a proposal for the control and eradication of vermin and fly infestations at the facility.

A number of proposals were produced by Wexford County Council during 2008 and submitted to the Agency for approval. These proposals have since been approved and implemented on site in order to address the issue of nuisance monitoring as follows:

- Control and eradication of vermin and fly infestation proposal.
- Odour monitoring proposal

Copies of both proposals and associated correspondence with the Agency are kept on file at the site office.

8 RESOURCE & ENERGY CONSUMPTION

8.1 Electricity and Energy Usage

Electricity usage for the reporting period was estimated at 220,143 kWh. The administration building at Holmestown has been designed with energy efficiency in mind. The following is a list of energy saving mechanisms that have been implemented:

- Control of internal lighting based on occupancy and the level of available natural light.
- Hot water heated by a combination of wood chip boiler and highly efficient vacuum tube solar panels
- Under floor heating system and wood chip boiler providing all heat for administration building
- Mechanical heat recovery unit which uses exhaust warm air to heat cold air coming into the building
- Rainwater harvester in operation to collect water from building roof for reuse in toilets
- Building management system monitors the temperature in each room and controls
- Integral mini wind turbine and solar panel power each light column in operation in the car park area.
- A wind turbine was constructed on site in October 2009. This is located south east of the Administration Building and provides power to the building.

8.2 Water

During dry periods in 2012 approximately 25,000 litres of water was used on site for the purposes of dust suppression (this water was won on site from the storm water storage pond). As there was no water meter installed in the site office to date to monitor water intake, no domestic water usage data is available. A rainwater harvester is in operation to supply water for sanitary use.

8.3 Diesel

Total diesel fuel consumption is estimated to be 39,542 litres from 01st January to 31st December 2012.

9 EMISSIONS & ENVIRONMENTAL MONITORING SUMMARY

9.1 Emissions and environmental monitoring

A summary of Environmental parameters monitored at Holmestown Landfill carried out during this reporting period (January 2012 – December 2012) is contained in Table 10 below. The location of all monitoring points is included in Appendix G.

All industries have to annually report environmental emissions and waste transfer data through a web-based form as part of their AER. The E-PRTR Regulation (EC) No 166/2006 concerning the establishment of a European Pollutant Release and Transfer Register came into force in February 2006 and was brought into Irish law through SI No 123 of 2007. The PRTR 2012 document is included in Appendix A.

Table 10 **A summary of emissions & environmental monitoring as specified in Waste Licence 191-2**

Emissions Monitoring	Frequency
Landfill Gas Flare	Continuously/Annually
Leachate Leachate Treatment Plant	Continuously/Quarterly/Annually
Surface Water Pond	Continuously/Quarterly/Annually
Environmental Monitoring	Frequency
Landfill Gas Site Office	Continuously
Gas migration monitoring Boreholes	Monthly
Gas field Balancing	As required
Leachate Leachate levels	Continuous
Visual, odour and temperature	Quarterly
Leachate analysis	Annual
Surface water	Quarterly / Annual
Groundwater Levels	Monthly

Environmental Monitoring	Frequency
Groundwater	Quarterly / Annual
Noise	Quarterly
Dust	Tri-Annually and Annually
Odour	Daily/Weekly/As required

9.2 Monitoring

Wexford County Council carries out a comprehensive monitoring programme, in compliance with the waste licence conditions. The monitoring programme includes Landfill Gas, Leachate Level & Quality, Surface Water Quality, Groundwater Level & Quality, Noise, Dust, Odour, Meteorological and Topographical surveys.

Results are interpreted using either pre-defined emission limits or in the case of more variable systems such as water bodies by comparison with pre-operational (baseline) trends. Licence Monitoring at HWMF follows the principles set out in the following:

- 1999/31/EC. *Council Directive on the Landfill of Waste*. Official Journal of European Communities.
- Campbell, R. et al. (2003), *Landfill Manuals: Landfill Monitoring, 2nd Edition*. EPA.

There are emission limits in the license for gas, noise and dust parameters. Trigger Levels (based on monitoring data) have also been set for emissions from the storm water attenuation pond and selected groundwater parameters. Control Rule principles as referred to in the Landfill Directive have been established for groundwater monitoring (see Quarter 3 & 4 report for 2009 for further details) and will be revised as more data is collected. In accordance with the Licence/best practice we measure a number of additional parameters to supplement emission limit/trigger level data. All the data measured is reviewed and utilised for interpretation where applicable.

Monitoring during this reporting period was carried out according to Schedule D of Waste Licence W191-02. Monitoring for 2012 is summarised in this section.

9.3 Emissions Monitoring:

9.3.1 Landfill Gas Flare

One enclosed type flare (in accordance with Section 3.14.1. of the licence) is in operation at HWMF. The flare was commissioned in August 2009. The flare is located at the eastern side of the facility adjacent to the Leachate Treatment Plant. The flare is connected to the active cells via a 355mm OD PE pipe that runs both over and underground. The flares maximum operating capacity is 500m³/hr and it is set to burn at >1000 degrees C. The retention time for the flare is 0.5 sec. The main components of the flare include:

- Control valves;
- Knock out Pot with filter;
- Flame arresters;
- Gas booster (variable speed motor)
- Sampling equipment for both influent bulk gases and emissions;
- Temperature control by thermocouple and louvers;
- Human Machine Interface;
- Call out System.
- Connection to SCADA

Emission limit values for landfill gas plant are set out in Schedule C.6 of our License and are summarized in the Table 11 below.

Table 11 Flare Emission Limits

Parameter	Flare Enclosed Emission Limit Value ^{Note 1}	Utilisation Plant Emission Limit Value ^{Note 1}
Nitrogen oxides (NO _x)	150mg/m ³	500mg/m ³
CO	50mg/m ³	50mg/m ³
Particulates	n/a	130mg/m ³
Total Organic carbon (TOC)	10mg/m ³	10mg/m ³

Note1: Dry gas referenced to 5% oxygen by volume for utilisation plants and 3% oxygen by volume for flares.

The operation of the flare unit is continuously monitored and recorded by the SCADA system. A call out system is linked to the SCADA which notifies WCC staff via text message if the preset control limits are breached. The SCADA is linked to the Administration Building and the internet. Flare performance is monitored by staff on an ongoing basis.

Flare emission results

A flare emission test was carried out in accordance with specified requirements on the flare unit in November 2012 by Odour Monitoring Ireland Ltd. The report concluded that CO, NO_x, as NO₂ and TOC in the landfill flare exhaust stack were within the emission limit values specified in Schedule C6 of Waste Licence W00191-02. The full report will be submitted to the EPA as part of the Annual Results Report under separate cover.

9.3.2 Leachate Treatment Plant

Emission limit values for leachate discharged to sewer are set out in Schedule C.7 of our Licence and are summarized in the Table 12 below.

Table 12 Emission Limits for Leachate Being Discharged to Sewer

Emission Point Reference: LTP3

Volume to be emitted: Maximum in one day 80m³

Parameter	Emission Limit Value
	Daily Mean Concentration (mg/l)
BOD	200
COD	750
Ammoniacal Nitrogen (NH ₄ +N)	10
Nitrate Nitrogen	1500
Alkalinity	1000
Dissolved Methane	0.2

Monitoring frequency and analysis techniques for emissions to sewer are set out in Table D.8.1 of the licence.

Leachate treatment plant results

The on site Leachate Treatment Plant was commissioned in 2009. All leachate following pre treatment (in accordance with section 5.12.4 of the Licence) was tankered off-site for final treatment at Wexford Wastewater Treatment Plant. It is noted that the Leachate Treatment Plant was fully compliant with the emission limits throughout 2012.

9.3.3 Surface Water Pond

Two sampling points SWP1 and SWP2 are located on the inlet and outlet of the attenuation pond respectively. Schedule C4 of the Licence sets discharge limits for the level of suspended solids from the outlet (SWP2) of the attenuation pond. The discharge limit is detailed in Table 13 below.

Table 13 Surface Water Discharge Limit.

Measured at the outlet of the surface water pond (SWP2).

Level (Suspended Solids mg/l)
25

In accordance with sections 3.22.1(c) and 6.5.3 of the Licence monitoring of surface water entering and discharging from the attenuation pond is ongoing. Proposals have been submitted to the Agency detailing criteria/trigger levels that determine when the outlet from the pond shall be closed. The pond outlet will close automatically if the trigger levels at the inlet (SWP1) are breached. The parameters monitored include conductivity, pH and TOC. Trigger levels have been set and are summarised in Table 14 below.

Table 14 Trigger Levels for the Attenuation Pond.

Monitoring Point	pH		Electrical Conductivity	TOC
	Upper	Lower		
	pH		uS/cm	mg/l
SWP1	9.5	6.5	875	25

The trigger level review recommend that TOC trigger levels are set at 25mg/l. For full details of attenuation pond trigger levels see report as follows:

- Fehily Timoney and Company (September 2010). Trigger Levels for Surface Water Retention Pond.

In addition Section 3.22.1 of the Licence requires levels in the surface water retention pond, flows to perimeter streams and quality of the surface water at the inlet to the surface water lagoons and being discharged to the perimeter streams to be recorded on telemetry. Similar to the pond inlet (and in addition to quarterly environmental monitoring) pH, electrical conductivity and TOC are being recorded continuously at the outlet (SWP2). A SCADA monitoring / control system is operational and can be accessed in the Administration Building on site. Discharges from the pond to the surface water stream were manually controlled, grab samples, SCADA data and visual inspection are used to ascertain optimum release conditions.

In 2012 flows to the pond were limited to:

- main access road drainage from the entrance gate to the head of the western track;
- Water pumped from waste free cells in Phase 2.

All other surface water sources (including run off from the Civic Amenity site and Maintenance Building) are directed to the LTP for pre-treatment in accordance with the Licence and then removed by tanker off-site to Wexford Waste Water Treatment Plant.

Surface water pond emission results

Surface water results for the watercourses in and around the site were satisfactory. No exceedences of trigger levels or atypical results were recorded at the outlet from the surface water pond.

9.4 Environmental Monitoring

9.4.1 Landfill Gas

Gas sampling was carried out on site prior to construction. Initially groundwater wells were sampled until gas wells were installed around the proposed landfill footprint. Pre-construction results showed elevated levels of carbon dioxide at a number of locations. One elevated methane reading was recorded. The majority of the pre-construction gas wells were in filled during the construction phase. Peripheral landfill monitoring boreholes GS11-GS17 (as detailed in Schedule D, Table D1.1, of our Licence) were installed in conjunction with Phase 1 of the landfill cells. Prior to landfilling high naturally occurring Methane and Carbon Dioxide levels were measured in these boreholes and an investigation was carried out at the request of the Agency. The high readings are all concentrated in the north east corner of the facility where the bulk of the excavation work was carried out. As part of the investigation nine additional boreholes (GW2-GW10) were installed. Subsequent reports noted the elevated levels of carbon dioxide and methane pre-construction and summarized that *'It is likely therefore that when fill material was placed on top of this virgin ground, it acted like a semi-impermeable blanket, inhibiting venting of gases and causing a build up of gas in the ground.'*

The reports recommended that for a two year period monitoring is carried out at all boreholes at intervals not exceeding one month. Additionally, vertical and horizontal gas extraction pipes are monitored (at weekly intervals approx.) to assess pressures within the waste body to ensure that negative pressures are maintained. For full details of the investigation into the naturally occurring gases see reports as follows:

- Fehily Timoney and Company (April 2008). Investigation of Naturally Occurring Background Gas Levels at Holmestown Landfill. Risk Assessment and Recommendations, Rev 1;
- Fehily Timoney and Company (December 2008). Investigation of Naturally Occurring Background Gas Levels at Holmestown Landfill. Trace Gas Analysis, Rev 2;

In accordance with Section 3.24.1 (b) of the Licence, landfill gas is monitored continuously in all site buildings. WCC have also installed Gas monitoring equipment in two local dwellings at the owner's request.

To allow for settlement gas sampling points within the waste will be installed when the landfill cap is completed. As noted above monitoring of the in-cell gas infrastructure is ongoing.

Landfill gas concentration limits measured in any service duct or manhole on, at or immediately adjacent to the facility and/or at any other point located outside the body of the waste are set out in Schedule C.2 of our License and are summarized in the Table 15 below.

Table 15 Landfill Gas Concentration Limits

Methane	Carbon Dioxide
20% LEL (1% v/v)	1.5% v/v

A summary of gas monitoring points is included in Table 16 below.

Table 16 Gas Environmental Monitoring Points

List of landfill gas monitoring points for 2012	
Points	Description
GS11, GS12, GS13, GS14, GS15, GS16, GS17	Perimeter gas migration monitoring wells
GB1, GB2, GB3, GB4	Gas monitoring points in buildings
GW2 East west, GW3 East west, GW4 North south, GW5, GW6, GW7, GW8, GW9 East west, GW10	Gas investigation wells (Installed March/April 2008)
Waste cells	All vertical extraction wells in Phase 1.

Landfill gas results

Methane and Carbon Dioxide levels remain elevated in a number of the monitoring wells. Elevated readings were initially recorded before landfilling operations commenced with Borehole GS13 consistently recording the highest readings with methane levels as high as 60.8% (feb.2012). The elevated readings are concentrated along the north east periphery of the phase 1 landfill footprint where the bulk of the excavation work was carried out.

Methane and carbon dioxide results for the peripheral gas boreholes have tended to fluctuate dramatically. The results on average, however, indicate that the level and location of gas release has not varied significantly since the pre-landfilling stage (Q1, 2008) and contamination from the landfill cell is not suspected.

Three boreholes GS17, GW5 and GW10 have not exceeded trigger levels to date. GW5 and GW10 are located in virgin ground and GS17 is the most southerly borehole on the eastern perimeter of Phase 1.

Elevated results were also recorded pre and post landfilling operations for groundwater in the north east corner.

Plots detailing trends for Methane and Carbon Dioxide (licenced emission limit parameters) for the peripheral boreholes GS11-GS17 are included in Appendix C. Refer to Quarterly monitoring reports 2012 for full details.

Gas has not been detected in any of the site buildings.

A report to review of the peripheral gas borehole results was submitted to the EPA in 2010. The review incorporates all results to the end of 2009.

9.4.2 Flare.

See section 9.3.1 for general information on the flare. Landfill gas utilisation plant/enclosed flare parameters and monitoring frequency are set out in Table D.7.1 of our License. The enclosed flare parameters, monitoring frequency and analysis method are summarized in Table 17 below.

Table 17 Flare Parameters and Monitoring Frequency

Parameter	Flare (enclosed)	Analysis
	Monitoring Frequency	Method / Technique
Inlet		
Methane (CH ₄)%v/v	Continuous	Infrared analyser
Carbon dioxide (CO ₂)%v/v	Continuous	Infrared analyser
Oxygen (O ₂)%v/v	Continuous	Electrochemical
Total Sulphur	Annually	Ion chromatography
Process Parameters		
Combustion Temperature	Continuous	Temperature Probe / Data logger

The results of parameters which are monitored continuously are transferred and stored on the SCADA system.

In addition, regular monitoring of inlet gas is carried out as part of the gas field balancing procedure. The equipment used for the detection and quantification of landfill gas is a GA2000 – ATEX Certified Gas Analyser.

The operation of the flare unit is continuously monitored and recorded by the SCADA system. A call out system is linked to the SCADA which notifies WCC staff via text message if preset control limits are breached.

Flare results

The reporting element of the SCADA system was commissioned in 2010. Daily on site inspections were also carried out the results have shown that the flare has operated satisfactorily since it was commissioned.

A backup data logging system was commissioned at the flare in February 2010. Data is downloaded from the backup data logger quarterly and maybe utilised for future reports if required.

9.4.3 Leachate

See section 6.2.1 for general information on the Leachate Treatment Plant. Six leachate sampling locations have been established and maintained as detailed in Schedule D, Table D1.1, of the license. Three points LTP-1, LTP-2 and LTP-3 are located within the leachate treatment compound. The remainder of the monitoring points (L1, L2, L3 & L4) are located in the corresponding waste cells. In accordance with our licence, leachate levels are continuously monitored and are recorded on the SCADA system. Leachate levels for the landfill cells are maintained at 1.0m over the top of the liner at the base of the landfill in accordance with section 5.12.2 of our licence.

Leachate parameters and monitoring frequency are set out in Tables D.5.1 of the License. Continuous and quarterly monitored leachate parameters, monitoring frequency and analysis method are summarized in Table 18 below.

Table 18 **Leachate Parameters and Monitoring Frequency**

Parameter	Flare (enclosed)	Analysis
	Monitoring Frequency	Method / Technique
On-site Leachate		
Visual	Quarterly	Visual
Odour	Quarterly	Olfactory
Leachate Level	Continuous	Pressure transducer
Temperature.	Quarterly	Thermometer

Visual, odour and temperature inspections are carried out by site staff. Visual and odour assessment are based on visual and olfactory scales respectively (see quarterly monitoring reports 2012 for details). In cell leachate level is controlled and monitored by a combination of pumps, pressure probes and the SCADA system. Level is recorded in meters above ordnance datum (mAOD).

Leachate results

No significant visual, odour or temperature change was noted in 2012. Leachate levels in the landfill cells is maintained at <1.0m above the liner at the base of the landfill.

Annual leachate quality was sampled in June 2012 in accordance with Table D5.1 of the Licence. The annual leachate quality report is submitted under separate cover in accordance with schedule F of the licence.

9.4.4 Surface Water

Eleven surface water sampling locations have been established and maintained as detailed in Schedule 4, Table D1.1, of the license. Two points SW4 and SW5 are located downstream of Phase 1 of the landfill. Nine are located on watercourses upstream: SW1; SW2, SW2A; SW3; SW3A; SW6; SW7; SW8; SW9 of current operations. There are two principal surface water streams one flowing from SW9 to SW5 and another from SW2 to SW5. Each is made up from a number of smaller streams and drainage ditches. These combine to the north east of the site and flow east, north east towards the river Slaney. Monitoring point SW5 is located downstream of the main junction of these streams. The northern edge of the landfill is 1.8km approx. from the River Slaney. The first surface water samples were collected in 2002. Pre-construction and pre-landfilling results are utilised as baseline data for comparison as required.

The objective of environmental monitoring is to screen for environmental pollution due to facility operations. Surface water bodies within and downstream of the facility are at risk. The relevant monitoring points are SW4 & SW5 (both downstream of the main operational areas), SWP1 & SWP2 (the attenuation pond monitoring points) and to a lesser extent SW1, SW2, SW2A, SW3, SW3A, and SW6 which are also on the Holmestown site but are upstream of all major activities. The other monitoring locations (SW7, SW8 & SW9) are upstream and offsite and their results are only interpreted if an influence in onsite streams is suspected. Surface water monitoring locations are summarized in Table 19 below.

Table 19 Surface Water monitoring locations

Surface water monitoring locations	
Surface water monitoring point	SW1, SW2, SW2a, SW3, SW4, SW5, SW6, SW7, SW8, SW9

The parameters tested in this report (in accordance with Table D.5.1 of the license) are as follows: Ammoniacal Nitrogen; Electrical Conductivity; Chloride; Dissolved Oxygen; Temperature; Ph; BOD; COD; Total Suspended Solids (TSS); Visual Inspection/Odour (weekly)

Surface water results

A visual inspection of each of the surface water monitoring locations was carried out on a weekly basis during 2012 as per licence requirements. The visual inspection and surface water quality results for 2012 did not indicate pollution from facility activities.

Elevated ammonia results 0.8mg/l was recorded at SWP1 in Q1. The suspected source is run off from neighbouring agricultural lands. A number of elevated chloride readings were recorded in 2012 and were consistent at both upstream and downstream sampling locations. The elevated readings do not appear to be linked to HWMF activities.

The annual suite of surface water monitoring which includes a more comprehensive list of chemical parameters compared to the quarterly groundwater monitoring suite was carried out on 26th March 2012 at all surface water monitoring locations as per Schedule D. The test results suggest that no pollution is entering the surface water from the landfill. The annual surface water analysis report is submitted under a separate cover in accordance with Schedule F of the licence.

9.4.5 Surface water Biological Survey

A biological survey of the surface water streams surrounding Holmestown Waste Management Facility was carried out on 18th September 2012. A total of 4 locations were selected for monitoring as follows:

- KS01 Upstream SE of facility within the site boundary – Un-named stream
- KS02 Downstream NE of the facility within the site boundary – Un-named stream
- KS03 Downstream of the facility within the site boundary – Polehore stream
- KS04 Upstream of the facility within the site boundary – Polehore stream

The overall quality of the un-named stream both upstream and downstream of the facility was determined to be moderately polluted and rated as Q3 at each of the monitoring points using the EPA Q-value rating system. The overall quality of the Polehore stream downstream of the facility was determined to be unpolluted and rated as Q4 and slightly polluted upstream of the facility and rated Q3/4 using the EPA Q-value rating system. There were no signs of animal access to the streams at any of the monitoring locations. There was no noticeable difference in water quality between upstream and downstream locations. All surface water biological monitoring locations are detailed in Appendix G. A copy of the biological monitoring report is kept on file at the site office and can be viewed upon request.

9.4.6 Surface water pond quality: SWP1 – SWP2

For general details on the pond see section 9.3.3 above. SWP1 and SWP2 are also monitored as part of the quarterly monitoring suite (see section 9.3.3 above). Slightly elevated ammonia levels 0.8mg/l were recorded in Q1, 2012 and elevated chloride levels 56mg/l were recorded in Q3 2012. Similar elevated ammonia and chloride readings were recorded in the past. The elevated levels were kept under review and the suspected source is from neighbouring agricultural lands, no further exceedences were recorded. More details are presented in the quarterly monitoring reports submitted to the agency during the reporting period.

9.4.7 Groundwater

Groundwater monitoring was carried out at a total of 7 on-site and 11 off-site private well locations on a quarterly basis as detailed in Schedule D of the waste licence. Appendix G shows the location of all groundwater monitoring locations on site. Groundwater monitoring locations are summarized in Table 20 below.

Table 20 Groundwater Monitoring Locations

Groundwater Monitoring Locations	
Existing Groundwater Monitoring Wells	BH1, BH2, BH3, BH6, BH7, BH8, BH9.
Private well monitoring points	PW1, PW2, PW2A, PW2B, PW4, PW5, PW6, PW7, PW8, PW9, PW10, PW11, PW11A.

In accordance with section 6.4.2 of the Licence a report has been submitted to the Agency detailing proposals for trigger levels for Groundwater results. Three parameters were selected based on suitability: Ammoniacal Nitrogen; Conductivity and Chloride. The trigger levels are summarised in Table 21 below.

Table 21 Trigger Levels for Groundwater.

Trigger level			
Units	Ammoniacal nitrogen mg/l	Electrical Conductivity µS/cm	Chloride Mg/l
BH 1	0.2	1,890	126
BH 2 ^{Note 1}	66.0	2,633	163
BH 3	0.2	613	59
BH 6	0.1	917	211
BH 7 ^{Note 2}	Note 2	Note 2	Note 2

BH 8	1.6	835	59
BH 9 ^{Note 1}	1.3	1,629	46

Note 1 = Down gradient groundwater borehole

Note 2 = BH7 has been dry during post waste monitoring

The trigger level report (in accordance with the Landfill Directive) proposes Control Rule principles for groundwater management at HWMF. The Control Rule principal involves the establishment of Control Levels and Trigger Levels. A Control Level is set as an indicator of possible environmental pollution. A Trigger Level is defined as the level at which significant adverse environmental effects have occurred. Control Levels are used to instigate review/remediation works prior to significant environmental pollution taking place. For full details on the Control Levels and the Trigger Levels for groundwater see report as follows:

- Fehily Timoney and Company (September 2010). Groundwater Monitoring Trigger Levels.

Groundwater results

Results are outside trigger levels in a number of the on-site groundwater boreholes tested. The elevated levels date back to pre-landfilling and have been recorded both upstream and downstream of the landfill footprint. Similar to gas readings the elevated results are prevalent downstream in the north east corner where the bulk of the on site excavation works were carried out and appear to be due to a non-landfill source in the soil. Elevated ammonia and chloride levels were recorded in 2012, based on borehole locations and trends the elevated ammonia and chloride do not appear to be related to HWMF activities. The main soil mass is low permeability clay with sand and gravel lenses. Groundwater movement in the soil zone is relatively slow resulting in low flows. This enables emissions to build up locally around a source as appears to be indicated from the results.

Monitoring of groundwater levels was carried out at each of the on-site locations on a quarterly basis with the use of a dip meter. Groundwater levels remained relatively consistent throughout the monitoring period, with only minor variations in groundwater levels recorded in accordance with prevailing weather conditions. See quarterly reports for full details.

Monitoring results were not available for BH7 or BH8 during 2012 as the wells were found to be dry at time of sampling.

Historical trend graphs of groundwater trigger levels (ammoniacal nitrogen, conductivity and chloride) are included in Appendix C

A total of eleven private wells are monitored around the facility. IGV level exceedences for chloride were recorded at a number of the wells. A review of private well results is considered outside the scope of standard reporting. The results will be utilised for more rigorous reviews if required. See quarterly reports for results.

The annual suite of groundwater monitoring which includes a more comprehensive list of chemical parameters compared to the quarterly groundwater monitoring suite was carried out on 26 March 2012 at all borehole and private well monitoring locations as per Schedule D. The test results suggest that no pollution is entering the groundwater from the landfill. The annual groundwater analysis report is submitted under separate cover in accordance with Schedule F of the licence.

9.4.8 Noise

Ten potentially noise sensitive locations are sampled at HWMF on a quarterly basis in accordance with Table D.1.1 of the Licence and amendments thereof. Emission limit values for noise are set out in Schedule C.1 of our License and are summarized in the Table 22 below.

Table 22 Noise Emission Limits

Day Db(A) $L_{Aeq}(30^1$ minutes)	Night Db(A) $L_{Aeq}(30^1$ minutes)
55	45

1. Duration amended to 30mins in accordance with Table D.4.1 of the licence and current standard practice.

Noise monitoring frequency and technique are summarized Table 23 below.

Table 23 Noise Monitoring: Frequency and Technique

Parameter	Monitoring Frequency	Analysis Method/Technique
L(A) E_q [30 minutes]	Quarterly	Standard ^{Note1}
L(A) ₁₀ [30 minutes]	Quarterly	Standard ^{Note1}
L(A) ₉₀ [30 minutes]	Quarterly	Standard ^{Note1}
Frequency Analysis (U3 Octave band analysis)	Quarterly	Standard ^{Note1}

Note 1: "International Standards Organisation. ISO 1996. Acoustics- description and Measurement of Environmental noise. Parts 1, 2 and 3."

Leq(t): is the continuous equivalent sound level over a specified time (t), where t represents a 30-minute period during this survey. This measure is used to give an indication of the average noise level over the specified time period.

L10 and L90: are both statistical noise levels. L10 Indicates that for 10% of the monitoring period, the sound levels were greater than the quoted value. L90 Indicates that for 90% of the monitoring period, the sound levels were greater than

the quoted value. L10 is used to express event noise. L90 is used to express background noise, usually filtering out loud, intermittent interferences such as traffic noise.

Noise results

A number of elevated noise monitoring results were noted for both day and night monitoring in 2012. The elevated noise levels have been attributed to external factors (e.g. N25, vehicles passing, dogs barking etc.) for the majority of the results recorded. No significant tonal noises were recorded. See quarterly reports for full details. Historical trend graphs of noise results are included in Appendix C.

9.4.9 Dust

QLab carried out dust monitoring at ten representative locations using Bergerhoff dust gauges on three separate occasions during 2012. Sampling results are provided in Appendix C. The location of all dust monitoring locations can be found in Appendix G.

- The dust deposition limit of 350 mg/m²/day was not exceeded during 2012

9.4.10 PM₁₀ Monitoring

PM₁₀ monitoring was carried out as per Licence condition D.3.1 over a 24 hour period from 26.11.12 to 27.11.12. The PM₁₀ monitoring locations were the same locations used for the ambient dust monitoring. All results were noted to be below the trigger value of 50ug/m³ as specified in the waste licence. PM₁₀ monitoring results are included in Appendix C.

9.4.11 Odour

Odour monitoring was carried out at Holmestown waste facility during 2012 as per EPA Guidance. Five odour monitoring points previously agreed with the Agency were monitored and labelled OD1, OD2, OD3, OD4 and OD5. OD1 is located to the northeast of the landfill on a bordering farm property. OD2 is located on the landfill between the active tipping area and Holmestown Little Farm on the western boundary of the site. OD3 is located between the landfill and Bolgerstown Farm on the eastern boundary of the site OD4 is upwind of the landfill and OD5 is downwind of the landfill. Odour monitoring is based on a combination of odour persistence which is rated on a scale of 0 to 2 (0 = none, 1 = intermittent, 2 = persistent), and odour intensity which is rated on a scale of 0 to 4 (0 = none, 1 = faint, 2 = moderate, 3 = strong, 4 = very strong).

No odour persistence or intensity was recorded above 1 during 2012 at the monitoring points. No odour complaints were received by the EPA during 2012. On a daily basis site personnel carry out a brief walkover of the site, to assess potential odour issues. If any odours are identified during the walkover measures are implemented to reduce or remove the source of the odour as soon as possible. Monthly odour monitoring is carried out at the five agreed points copies of all odour logs are kept on file at the site office and can be viewed upon request. Odour monitoring results for the reporting period are included in Appendix C.

9.4.12 *Bioaerosols*

Bioaerosols monitoring was not carried out on site at Holmestown during 2012. As per licence conditions bioaerosols monitoring is only required to be carried out upon commencement of composting operations on site. To date no composting of materials has taken place at Holmestown Waste Management facility.

9.4.13 *Meteorological monitoring*

All monitoring information was obtained from the weather station located at Johnstown Castle in Wexford; this station is within 10km of Holmestown Landfill site. A copy of the reports are available for review at the facility office. Meteorological graphs showing trends over time are available for review in Appendix D.

9.4.14 *Topographical Survey*

A topographical survey of the landfill cells was carried out in January 2012 and is included in Appendix G.

Condition 4.2 of the Waste Licence states that the final pre-settlement contours of the facility (mAOD) shall be as shown in Drawing No. 2.8 Rev A of the EIS Addendum. The final landform, after landfill settlement has taken place, will gradually slope upwards from a height of approximately 20m at the northern end of the site (Phase 1) to a height of 45m towards the south of the site. The maximum height recorded on the topographical survey of January 2012 was 28 m AOD in Cell 2 of Phase 1, located towards the northern end of the landfill.

APPENDICES

A. PRTR 2011



[Guidance to completing the PRTR workbook](#)

AER Returns Workbook

Version 1.1.16

REFERENCE YEAR	2012
-----------------------	------

1. FACILITY IDENTIFICATION

Parent Company Name	Wexford County Council
Facility Name	Holmestown Waste Management Facility
PRTR Identification Number	W0191
Licence Number	W0191-02

Waste or IPPC Classes of Activity

No.	class_name
3.5	Specially engineered landfill, including placement into lined discrete cells which are capped and isolated from one another and the environment.
3.1	Deposit on, in or under land (including landfill).
3.11	Blending or mixture prior to submission to any activity referred to in a preceding paragraph of this Schedule.
3.12	Repackaging prior to submission to any activity referred to in a preceding paragraph of this Schedule.
3.13	Storage prior to submission to any activity referred to in a preceding paragraph of this Schedule, other than temporary storage, pending collection, on the premises where the waste concerned is produced.
3.4	Surface impoundment, including placement of liquid or sludge discards into pits, ponds or lagoons.
3.6	Biological treatment not referred to elsewhere in this Schedule which results in final compounds or mixtures which are disposed of by means of any activity referred to in paragraphs 1. to 10. of this Schedule.
3.7	#####
4.10	The treatment of any waste on land with a consequential benefit for an agricultural activity or ecological system.
4.11	Use of waste obtained from any activity referred to in a preceding paragraph of this Schedule.
4.12	Exchange of waste for submission to any activity referred to in a preceding paragraph of this Schedule.
4.13	Storage of waste intended for submission to any activity referred to in a preceding paragraph of this Schedule, other than temporary storage, pending collection, on the premises where such waste is produced.
4.2	Recycling or reclamation of organic substances which are not used as solvents (including composting and other biological transformation processes).
4.3	Recycling or reclamation of metals and metal compounds.
4.4	Recycling or reclamation of other inorganic materials.

Address 1	Bartown
Address 2	Co. Wexford
Address 3	
Address 4	
	Wexford
Country	Ireland
Coordinates of Location	-6.57278 52.35079
River Basin District	IESE
NACE Code	3821
Main Economic Activity	Treatment and disposal of non-hazardous waste
AER Returns Contact Name	Fintan Ryan
AER Returns Contact Email Address	fintan.ryan@wexfordcoco.ie
AER Returns Contact Position	Facility Manager
AER Returns Contact Telephone Number	053 9120922
AER Returns Contact Mobile Phone Number	087 1227314
AER Returns Contact Fax Number	
Production Volume	0.0
Production Volume Units	
Number of Installations	0
Number of Operating Hours in Year	0
Number of Employees	3
User Feedback/Comments	
Web Address	

2. PRTR CLASS ACTIVITIES

Activity Number	Activity Name
5(d)	Landfills
5(c)	Installations for the disposal of non-hazardous waste
5(d)	Landfills
50.1	General

3. SOLVENTS REGULATIONS (S.I. No. 543 of 2002)

Is it applicable?	
Have you been granted an exemption?	
If applicable which activity class applies (as per Schedule 2 of the regulations)?	
Is the reduction scheme compliance route being used?	

4. WASTE IMPORTED/ACCEPTED ONTO SITE

[Guidance on waste imported/accepted onto site](#)

Do you import/accept waste onto your site for on-site treatment (either recovery or disposal activities)?	
---	--

This question is only applicable if you are an IPPC or Quarry site

4.1 RELEASES TO AIR

[Link to previous years emissions data](#)

| PRTR# : W0191 | Facility Name : Holmestown Waste Management Facility | Filename : PRTR-W0191_2012_Final.xls | Return Year : 2012 |

25/06/2013 15:35

SECTION A : SECTOR SPECIFIC PRTR POLLUTANTS

RELEASERS TO AIR		METHOD			Please enter all quantities in this section in KGs				
No. Annex II	POLLUTANT Name	M/C/E	Method Used		Emission Point 1	QUANTITY			
			Method Code	Designation or Description		T (Total) KG/Year	A (Accidental) KG/Year	F (Fugitive) KG/Year	
03	Carbon dioxide (CO2)	M	ISO 12039:2001			278335.0	278335.0	0.0	0.0
02	Carbon monoxide (CO)	M	EN 15058:2004			6.12	6.12	0.0	0.0
01	Methane (CH4)	M	ALT	EN12619		9.89	45783.89	0.0	45774.0
08	Nitrogen oxides (NOx/NO2)	M	EN 14792:2005			177.9	177.9	0.0	0.0
11	Sulphur oxides (SOx/SO2)	M	ALT	TGN M21		35.35	35.35	0.0	0.0
07	Non-methane volatile organic compounds (NMVOC)	M	EN 13649:2001			2.42	2.42	0.0	0.0

* Select a row by double-clicking on the Pollutant Name (Column B) then click the delete button

SECTION B : REMAINING PRTR POLLUTANTS

RELEASERS TO AIR		METHOD			Please enter all quantities in this section in KGs				
No. Annex II	POLLUTANT Name	M/C/E	Method Used		Emission Point 1	QUANTITY			
			Method Code	Designation or Description		T (Total) KG/Year	A (Accidental) KG/Year	F (Fugitive) KG/Year	
						0.0	0.0	0.0	0.0

* Select a row by double-clicking on the Pollutant Name (Column B) then click the delete button

SECTION C : REMAINING POLLUTANT EMISSIONS (As required in your Licence)

RELEASERS TO AIR		METHOD			Please enter all quantities in this section in KGs				
Pollutant No.	POLLUTANT Name	M/C/E	Method Used		Emission Point 1	QUANTITY			
			Method Code	Designation or Description		T (Total) KG/Year	A (Accidental) KG/Year	F (Fugitive) KG/Year	
						0.0	0.0	0.0	0.0

* Select a row by double-clicking on the Pollutant Name (Column B) then click the delete button

Additional Data Requested from Landfill operators

For the purposes of the National Inventory on Greenhouse Gases, landfill operators are requested to provide summary data on landfill gas (Methane) flared or utilised on their facilities to accompany the figures for total methane generated. Operators should only report their Net methane (CH4) emission to the environment under T(total) KG/yr for Section A: Sector specific PRTR pollutants above. Please complete the table below:

Landfill:		Holmestown Waste Management Facility			
Please enter summary data on the quantities of methane flared and / or utilised	T (Total) kg/Year	M/C/E	Method Used		Facility Total Capacity m3 per hour
			Method Code	Designation or Description	
Total estimated methane generation (as per site model)	591000.0	C	OTH	Landgem model	N/A
Methane flared	545226.0	M	OTH	Taken from SCADA	500.0 (Total Flaring Capacity)
Methane utilised in engine/s	0.0				0.0 (Total Utilising Capacity)
Net methane emission (as reported in Section A above)	45774.0	C	OTH	Total estimated methane gen	N/A

5. ONSITE TREATMENT & OFFSITE TRANSFERS OF WASTE

| PRTR#: -W0191 | Facility Name: Holmestown Waste Management Facility | Filename: PRTR -W0191_2012_Final.xls | Return Year: 2012 |

25/06/2013 15:35

Please enter all quantities on this sheet in Tonnes

Transfer Destination	European Waste Code	Hazardous	Quantity (Tonnes per Year)	Description of Waste	Waste Treatment Operation	Method Used		Location of Treatment	<small> Haz Waste: Name and Licence/Permit No of Next Destination Facility Non Haz Waste: Name and Licence/Permit No of Recover/Disposer </small>	<small> Haz Waste: Address of Next Destination Facility Non Haz Waste: Address of Recover/Disposer </small>	<small> Name and License / Permit No. and Address of Final Recoverer / Disposer (HAZARDOUS WASTE ONLY) </small>	<small> Actual Address of Final Destination (i.e. Final Recovery / Disposal Site (HAZARDOUS WASTE ONLY)) </small>
						M/C/E	Method Used					
Within the Country	13 02 08	Yes	6.94	other engine, gear and lubricating oils	R9	M	Weighed	Offsite in Ireland	Enva Environmental,084/1	Clonman,Portlaoise,Co.Laoise	Enva Environmental,084/1,Clonman	Clonman,Portlaoise,Co.Laoise
Within the Country	13 02 08	Yes	0.0	other engine, gear and lubricating oils	R9	M	Weighed	Offsite in Ireland	Greenstar,WCP/KK/054(A)10	Park,Gorey,Co.Wexford, Ireland		
Within the Country	15 01 02	No	39.86	plastic packaging	R3	M	Weighed	Offsite in Ireland	Greenstar,WCP/KK/054(A)10	Park,Gorey,Co.Wexford, Ireland		
Within the Country	15 01 04	No	4.9	metallic packaging	R4	M	Weighed	Offsite in Ireland	Rhab Glasco Ltd.,WP2472006	Unit 4 Osberstown Industrial Park,Caragh Road,Nass,Co.Kildare,Ireland		
Within the Country	15 01 05	No	0.0	composite packaging	R3	M	Weighed	Offsite in Ireland	AES/GOFF Ltd.,W00229-01	Wexford, Ireland		
Within the Country	15 01 05	No	0.0	composite packaging	R3	M	Weighed	Offsite in Ireland	Greenstar,WCP/KK/054(A)10	Park,Gorey,Co.Wexford, Ireland		
Within the Country	15 01 07	No	60.94	glass packaging	R3	M	Weighed	Offsite in Ireland	Rhab Glasco Ltd.,WP2472006	Unit 4 Osberstown Industrial Park,Caragh Road,Nass,Co.Kildare,Ireland		
Within the Country	16 01 07	Yes	0.84	oil filters	R9	M	Weighed	Offsite in Ireland	Enva Environmental,084/1	Clonman,Portlaoise,Co.Laoise	Enva Environmental,084/1,Clonman	Clonman,Portlaoise,Co.Laoise
Within the Country	16 06 01	Yes	0.0	lead batteries	R4	M	Weighed	Offsite in Ireland	Enva Environmental,084/1	Clonman,Portlaoise,Co.Laoise	Enva Environmental,084/1,Clonman	Clonman,Portlaoise,Co.Laoise
Within the Country	16 06 01	Yes	1.94	lead batteries	R4	M	Weighed	Offsite in Ireland	KMK,WCP-OW-08-0607-01	Bettystown Cross,Bettystown Co.Meath, Ireland	Bettystown Cross,Bettystown Co.Meath, Ireland	Bettystown Cross,Bettystown Co.Meath, Ireland
Within the Country	16 06 04	No	2.94	alkaline batteries (except 16 06 03)	R4	M	Weighed	Offsite in Ireland	The Recycling Village,WFP-LH-10-0010-01	Unit 4 Tenure Business Park,Monasterboice,Drogheda Co.Louth,Ireland		
Within the Country	19 07 03	No	18107.0	landfill leachate other than those mentioned in 19 07 02	D9	M	Weighed	Offsite in Ireland	Wexford Waste Water Treatment Plant, Kirrane,Rossliane Co.Wexford, Ireland			
Within the Country	20 01 01	No	0.0	paper and cardboard	R3	M	Weighed	Offsite in Ireland	AES/GOFF Ltd.,W00229-01	Wexford, Ireland		
Within the Country	20 01 01	No	0.0	paper and cardboard	R3	M	Weighed	Offsite in Ireland	Greenstar,WCP/KK/054(A)10	Park,Gorey,Co.Wexford, Ireland		
Within the Country	20 01 01	No	29.54	paper and cardboard	R3	M	Weighed	Offsite in Ireland	Recycling 2000,WP/06/06	Ramstown Business Park,Rossliane Road,Wexford,Co.Wexford,Ireland		
Within the Country	20 01 01	No	118.03	paper and cardboard	R3	M	Weighed	Offsite in Ireland	Greenstar,WCP/KK/054(A)10	Park,Gorey,Co.Wexford, Ireland		
Within the Country	20 01 11	No	13.44	textiles	R3	M	Weighed	Offsite in Ireland	Textiles Recycling Limited,WCP-DC-08-1225-01	Glen Abby Complex,Belgard Road,Tallagh,Dublin 24,Ireland		
Within the Country	20 01 21	Yes	0.32	fluorescent tubes and other mercury-containing waste	R5	M	Weighed	Offsite in Ireland	KMK,WCP-OW-08-0607-01	Bettystown Cross,Bettystown Co.Meath, Ireland	KMK,WCP-OW-08-0607-01,Bettystown Cross,Bettystown Co.Meath, Ireland	Bettystown Cross,Bettystown Co.Meath, Ireland
Within the Country	20 01 25	No	0.86	edible oil and fat	R9	M	Weighed	Offsite in Ireland	Pure Oil,WCP-KK-10-557-01	Ballyweather,Barrtown,Co.Wexford, Ireland		
Within the Country	20 01 35	Yes	188.15	discarded electrical and electronic equipment other than those mentioned in 20 01 21 and 20 01 23 containing hazardous components	R5	M	Weighed	Offsite in Ireland	The Recycling Village,WFP-LH-10-0010-01	Unit 4 Tenure Business Park,Monasterboice,Drogheda Co.Louth,Ireland	Unit 4 Tenure Business Park,Monasterboice,Drogheda Co.Louth,Ireland	Unit 4 Tenure Business Park,Monasterboice,Drogheda Co.Louth,Ireland
Within the Country	20 01 40	No	0.0	metals	R4	M	Weighed	Offsite in Ireland	Wexford County Council, Landfill,Co.Wexford,Ireland			
Within the Country	20 01 40	No	118.77	metals	R4	M	Weighed	Offsite in Ireland	Greenstar,WCP/KK/054(A)10	Park,Gorey,Co.Wexford, Ireland		
Within the Country	20 03 01	No	0.0	mixed municipal waste	R3	M	Weighed	Offsite in Ireland	AES/GOFF Ltd.,W00229-01	Kirrane,Rossliane Co.Wexford, Ireland		
Within the Country	20 03 01	No	0.0	mixed municipal waste	R3	M	Weighed	Offsite in Ireland	Wexford County Council (kerb side recycling section), Yard,Ennisicorthy,Co.Wexford, Ireland			
Within the Country	20 03 01	No	778.93	mixed municipal waste	R3	M	Weighed	Offsite in Ireland	Greenstar,WCP/KK/054(A)10	Park,Gorey,Co.Wexford, Ireland		

* Select a row by double-clicking the Description of Waste then click the delete button

[Link to previous years waste data](#)

[Link to previous years waste summary data & percentage change](#)

B. Staff Training


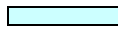
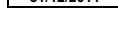
DESCRIPTION	Browne Barry	Browne Joseph	Byrne Billy	Byrne Noel	Byrne Peter	Courtney Billy	Fenlon Myles	Hudson John	Kelly Eamonn	Murphy Kevin	Nolan Larry	Walsh Nigel	Comments
Abrasive Wheels	20/10/2010		24/11/2010					20/10/2010		20/10/2010			Refresher required every 3 years.
Asbestos Awareness	20/10/2013		23/11/2013					20/10/2013		20/10/2013			
ATEX: Safety Awareness	20/03/2011		20/03/2011	20/03/2011				20/03/2011	20/03/2011	20/03/2011	20/03/2011		Refresher required every 2 years.
Basic Road Strengthening	20/03/2013		20/03/2013	20/03/2013				20/03/2013	20/03/2013	20/03/2013	20/03/2013		
Basic Surface Dressing												19/02/2010	
Bin Lift		18/05/2010		04/05/2010				20/04/2010			19/04/2010		Refresher recommended every 2 years Refuse trucks no longer operated by WCC.
Business (Honours)	21/05/2012												
Business (Bachelor of)	21/05/2011												
Business (Higher Cert)	21/05/2009												
Certificate in Local Government Studies							09/10/2009						
Chemical Safety (spraying)			19/05/2010	19/05/2010		19/05/2010	19/05/2010	19/05/2010					
Chlorine Hazard Awareness							29/06/2009						Check Refresher
Compactors & Balers (safe use)							31/10/2008					31/10/2008	Refresher recommended every 3 years
Computers (introductory Level)	11/02/2007						21/02/2011				20/10/2010	21/02/2011	
Counter-Balance Fork Lift Training				30/06/2011		20/11/2011	10/05/2011					20/01/2011	Refresher required every 3 years.
CSCS Tickets -360 Excavator				28/09/2014		20/11/2014	09/09/2014			14/01/2014			21/07/2014
CSCS Tickets -Dumper (provisional)	20/10/2012			16/10/2012				08/10/2012	26/07/2010		05/07/2010		Valid for 2 years
CSCS Tickets -HEALTH AND SAFETY AT ROADWORKS)	23/10/2014			23/10/2014				23/10/2014	24/07/2012		14/07/2012		Check Refresher
Customer Care inc Managing difficult and Aggressive Behaviour	01/11/2012	20/04/2012	16/10/2012	15/11/2012	17/05/2012	17/05/2012	24/05/2012	17/10/2012				20/04/2012	
Disability Awareness Training							23/05/2007						
Driver CPC (module 1)							29/02/2011			04/06/2011			Module to be completed every 5 years.
Driver CPC (module 2)							09/09/2010			09/09/2010			Module to be completed every 5 years.
Driver CPC (module 3)							09/09/2010			2015			Module to be completed every 5 years.
Driver CPC (module 4)							20/04/2014			2017			Module to be completed every 5 years.
Driver CPC (module 5)										2013			Module to be completed every 5 years.
E.C.D.L. Computer Course							19/03/2002			20/09/2002			
Energy Mapping							10/10/2010						
Fas Waste Management Certificate							17/05/2010						
Fas Waste Operatives Training Course									10/07/2007	10/07/2007			
Faz. Safe Pass	28/07/2010	24/09/2010	24/09/2010	16/10/2010	20/10/2010	20/10/2010	28/08/2010	16/02/2010	24/05/2012	07/05/2012	27/05/2011	20/07/2010	Refresher required every 4 years.
Fire Extinguisher (certificate)	28/07/2010	24/09/2010	24/09/2010	16/10/2010	20/10/2010	20/10/2010	28/08/2010	16/02/2010	24/05/2016	01/03/2016	27/05/2016	20/07/2013	Refresher recommended every 3 years
Fire Warden	20/10/2012	08/07/2015	08/07/2015	08/07/2015	15/05/2015	15/05/2015	12/12/2014	08/07/2015	08/07/2015	20/02/2011	20/02/2011	12/12/2014	
First Aid Basic													
First Aid: Cardiac First Responder	12/03/2013											20/03/2013	Refresher required every 2 years.
First Aid: Heartseaver AED												20/03/2011	Refresher required every 2 years.
First Aid: Occupational	12/03/2013		22/01/2012	23/01/2012	31/10/2011	31/10/2011	16/08/2012	31/10/2011	20/03/2013	23/02/2011		23/02/2012	Refresher required every 2 years.
Health & Safety for Road Workers	12/03/2013		12/03/2013	26/05/2013	31/10/2013	31/10/2013	19/10/2013	20/03/2013	20/03/2013	23/02/2013		23/02/2013	
Walk behind Lawnmower training												Feb. 2013	
Ladder Awareness	07/03/2011	07/03/2011	07/03/2011	13/03/2011	13/03/2011		14/03/2011	13/03/2011	07/03/2011			02/02/2011	
Landfill Gas Management													
Landfill Compactor (maintenance & safe use)	04/04/2008								04/04/2008	16/12/2008	15/12/2008		Refresher recommended every 3 years, Landfill Temp Closed Training not required
Life Jacket (Care & Use)	11/11/2013	11/11/2013	11/11/2013	11/11/2013					11/11/2013	11/11/2013	11/11/2013	31/03/2011	
Loading Shovel (maintenance & safe use)	08/08/2011	08/08/2011	08/08/2011	08/08/2011					08/08/2011	07/11/2008	07/11/2008	08/08/2011	Refresher recommended every 3 years
Manual Handling	19/05/2013	19/05/2013	19/05/2013	19/05/2013	19/05/2013	19/05/2013	19/05/2013	19/05/2013	19/05/2013	22/05/2011	19/05/2013	19/05/2013	Refresher recommended every 3 years
PE Pipe Welding													
PSDS & PSDP Training													
Quad Bike Training (safe use and operation)	20/04/2010	20/04/2010	20/04/2010	20/04/2010								27/04/2010	Refresher recommended every 2 years
Refuse Trucks (Safe Use) Bankman	20/04/2012	20/04/2012	20/04/2012	20/04/2012					20/04/2012	20/04/2012	20/04/2012	20/04/2012	
Safety Awareness													
Safety in Excavations													
Signing, Lighting & Guarding at Roadworks								06/10/2009			06/10/2009	22/01/2007	Refresher recommended every 5 years
Supervising Safety								06/10/2014			06/10/2014	20/08/2012	
Telescopic Material Handling													Refresher recommended every 5 years
Safety Representative Training													

KEY

	Training completed (date)
	No record of training
	Training proposed this year
	Training required
	Recommended refresher
	Required refresher

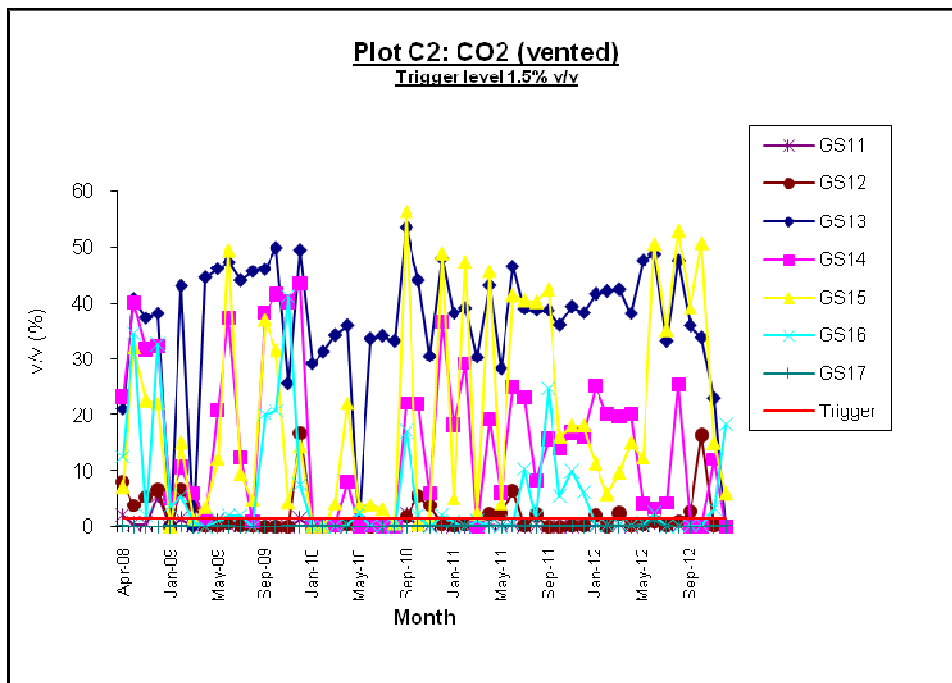
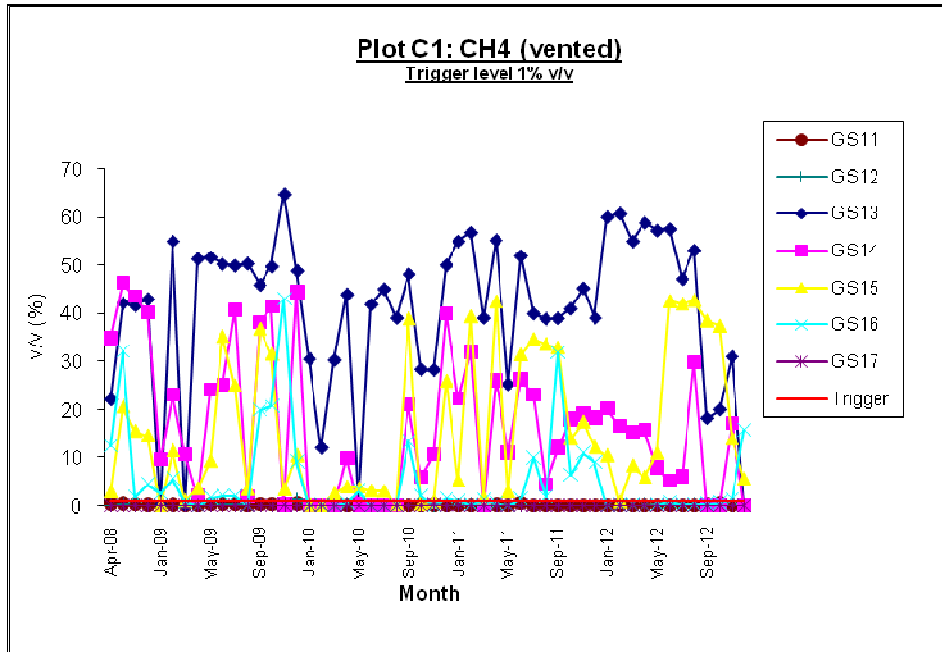
DESCRIPTION	Hobbs Fran	McCartan Daniel	Ryan Fintan	Comments
Cryptosporidium: Risk Assessment		18/01/2006		
Abrasive Wheels			23/10/2010	Refresher required every 3 years.
Asbestos Awareness			23/10/2013	
			14/03/2012	
ATEX: Safety Awareness	20/03/2011	20/03/2011	20/03/2011	
CSCS Tickets -HEALTH AND SAFETY AT ROADWORKS)	06/12/2012			
Customer Care inc Managing difficult and Aggressive Behaviour	30/05/2012			
Disability Awareness		30/11/2005		
EPA: Biodegradable Municipal Waste			24/06/2010	
EPA: Odour Assessment		12/01/2011		
FAS: Waste Management	18/01/2005	02/03/2008	05/05/2010	
FAS: Safe Pass	18/08/2011	09/07/2010	08/07/2011	Refresher required every 4 years.
	18/08/2015	09/07/2014	08/07/2015	
Filters Eval., Op & Main.		13/06/2006		
Fire Extinguisher		10/03/2010	05/07/2012	Refresher recommended every 3 years.
		10/03/2013	05/07/2015	
Fire Safety Manager	08/04/2009	09/04/2009	09/04/2009	
Fire Warden	06/12/2012		06/12/2012	
First Aid Basic				
First Aid: Cardiac First Responder			11/03/2011	
First Aid: Heartsaver AED	22/01/2010			
First Aid: Occupational	25/05/2011	22/03/2011	05/03/2013	Refresher required every 2 years.
	25/05/2013	22/03/2013	05/03/2015	
GPS Training	16/06/2006			
Health & Safety Management System Awareness			29/11/2012	
Landfill Gas Management			15/05/2012	
Life Jacket: Care and Use.	11/11/2010	11/11/2010	11/11/2010	
Manual Handling	22/09/2011	06/03/2007		Refresher recommended every 3 years.
	22/09/2014	06/03/2010		
PSDS & PSCS	11/03/2009	10/03/2009	09/03/2009	
Safety in Excavations		21/09/2010	21/09/2010	
Supervising Safety		21/06/2011	06/11/2012	
Water: Validation and Interpretation		26/02/2008		

Key

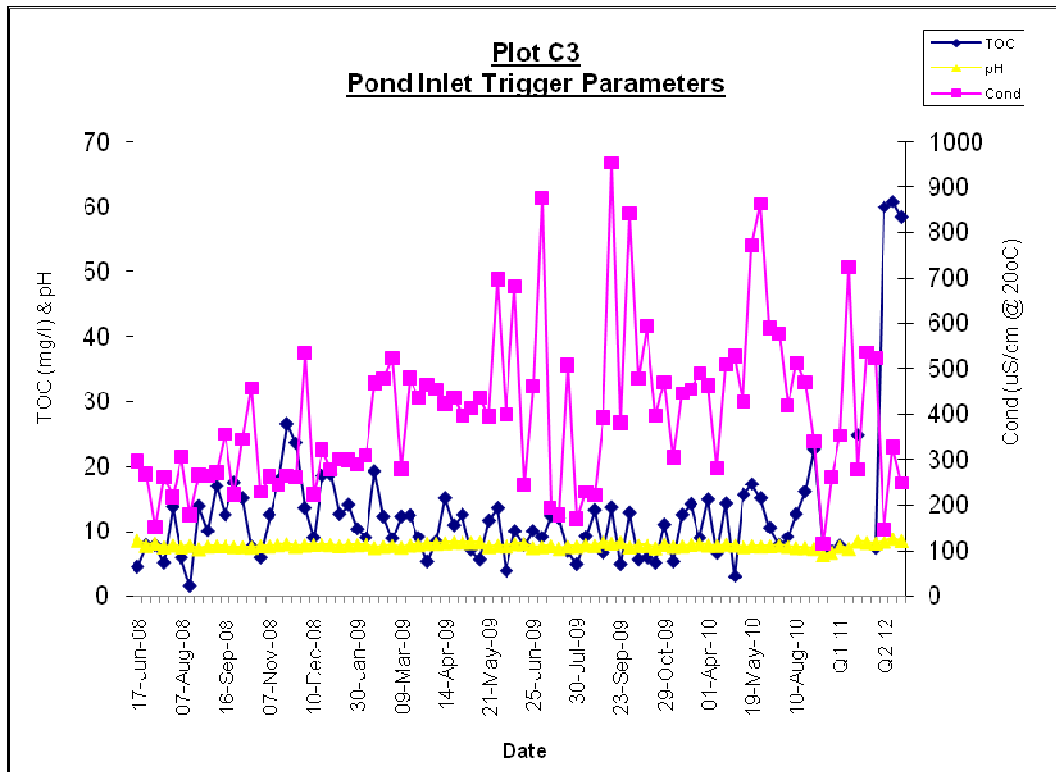
	Training completed
	No record of training
	Training proposed this year
	Training required
	Recommended refresher
	Required refresher

C. Monitoring Results and Graphs

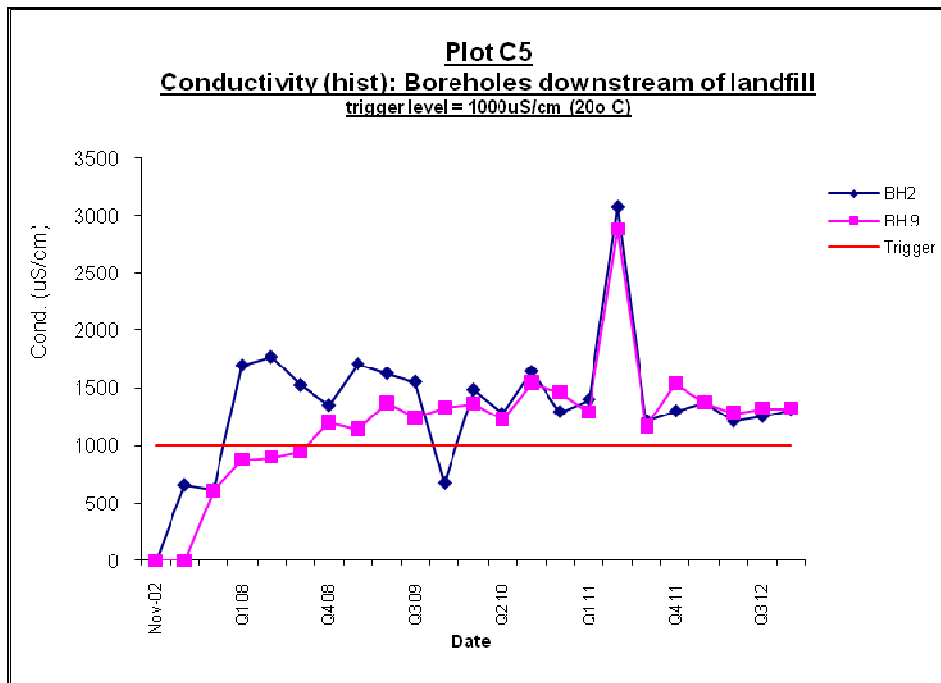
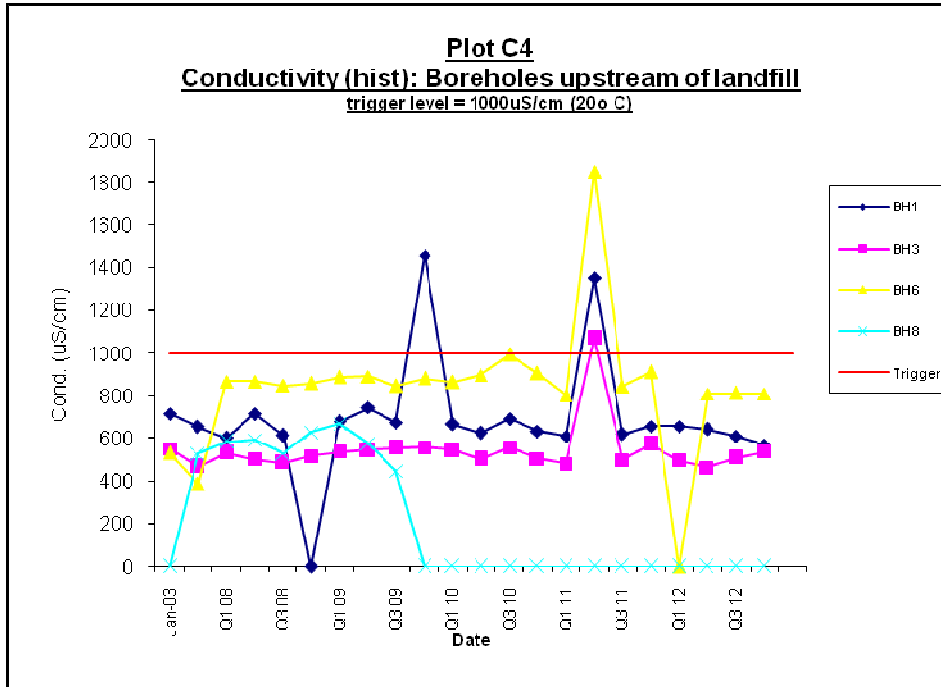
Gas Monitoring Results 2012



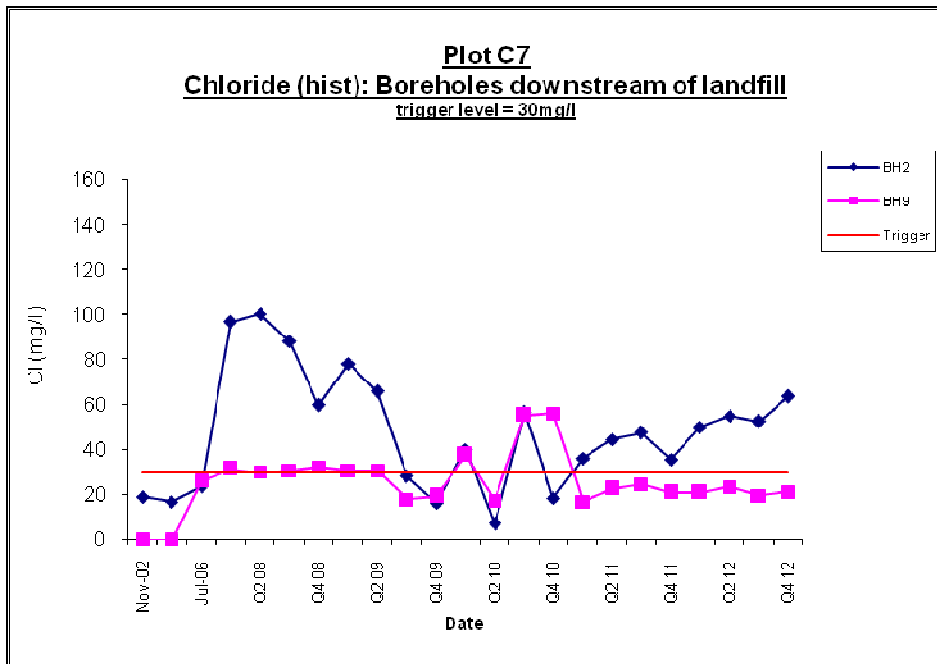
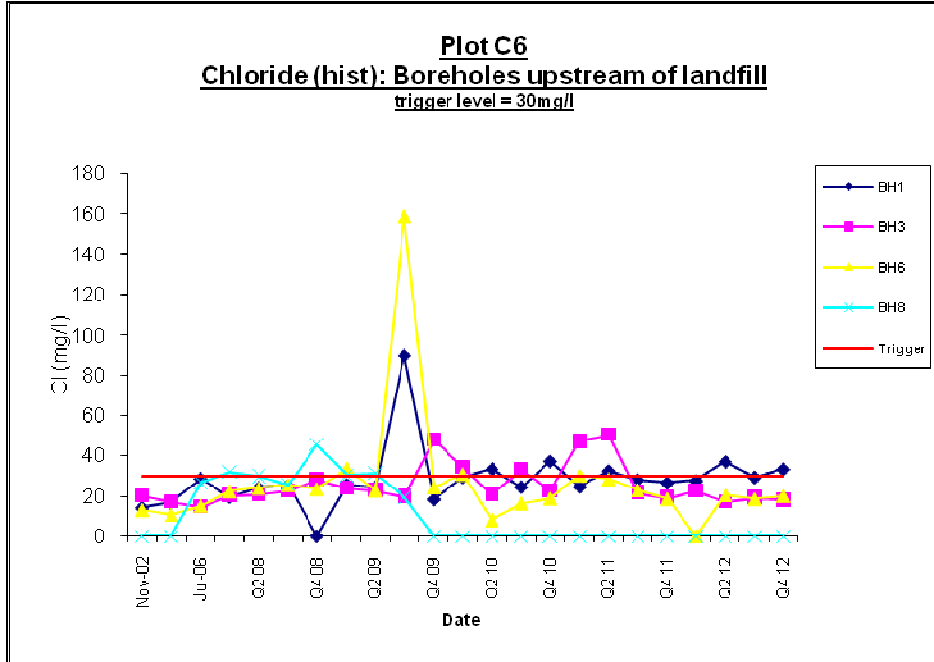
Surface Water Monitoring Results 2012



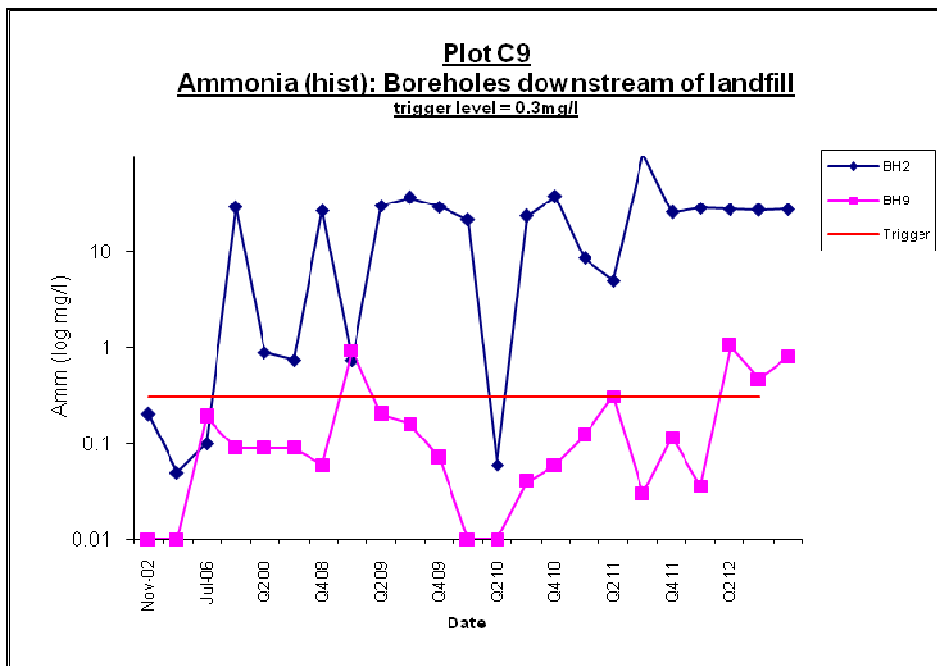
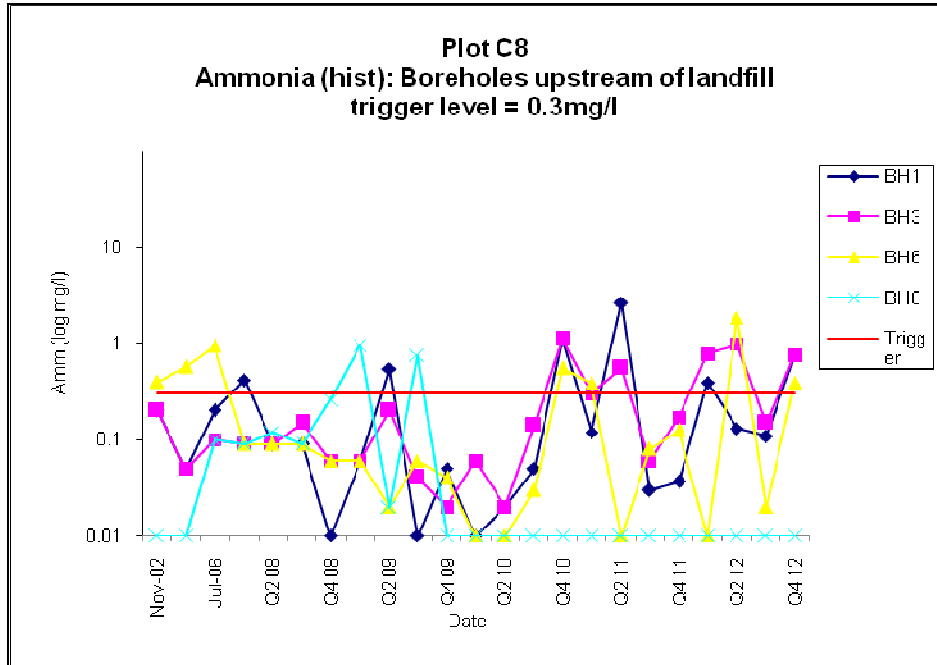
Ground Water Monitoring Results 2012



Ground Water Monitoring Results 2012



Ground Water Monitoring Results 2012



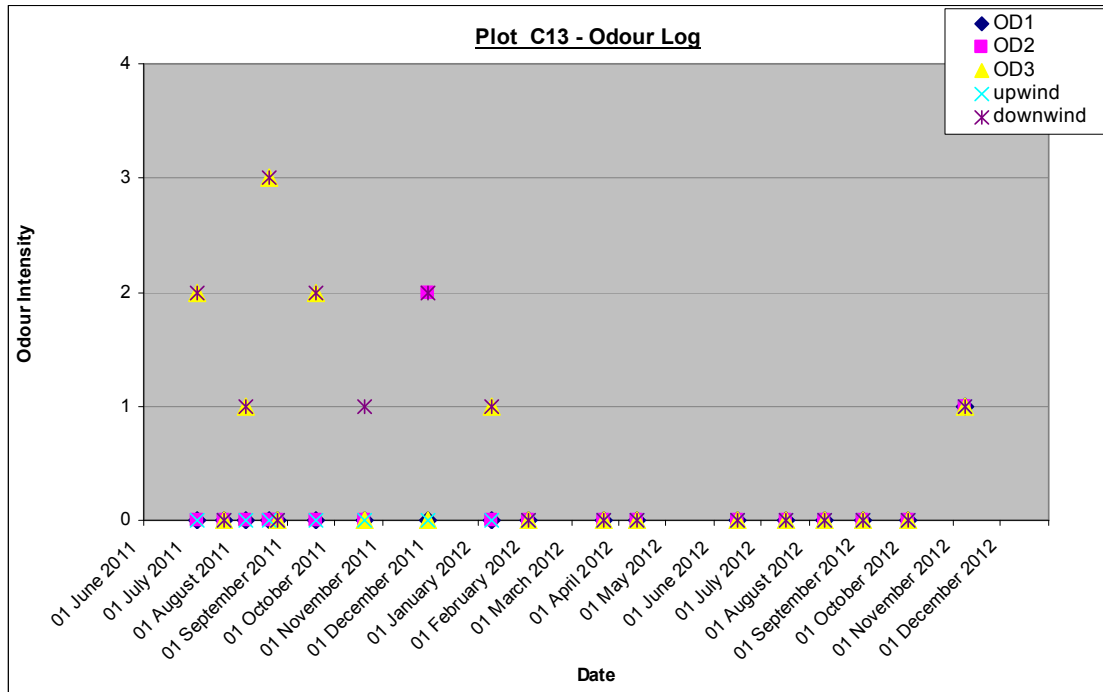
Dust Monitoring Results 2012

Dust Monitoring Locations and Frequency			
Dust analysis	D1 - D10	D1 - D10	D1 - D10
Dust Monitoring Results (mg/m ² /day)			
Date Range	27-03-12 - 06-06-12	06-06-12 - 05-07-12	05-09-12 - 05-10-12
D1	<5	82.4	82.4
D2	<5	119.3	119.3
D3	<5	246.8	246.8
D4	<5	128.5	128.5
D5	97.3	195.3	195.3
D6	<5	107.9	107.9
D7	27.3	309.7	309.7
D8	204.7	65.6	65.6
D9	5.1	124.2	124.2
D10	<5	52.1	52.1

PM₁₀ Monitoring Results 2012

PM ₁₀ Monitoring	
Location	Result (ug/m3)
D1	12
D2	11
D3	19
D4	21
D5	15
D6	13
D7	8
D8	11
D9	16
D10	12

Odour Monitoring Results 2012

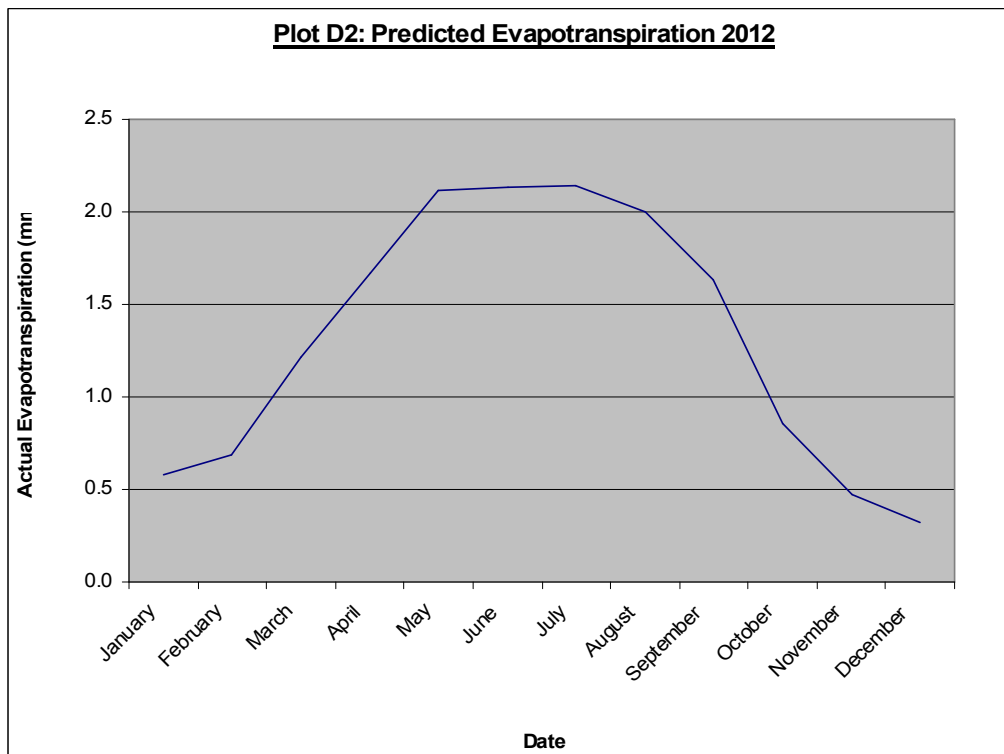
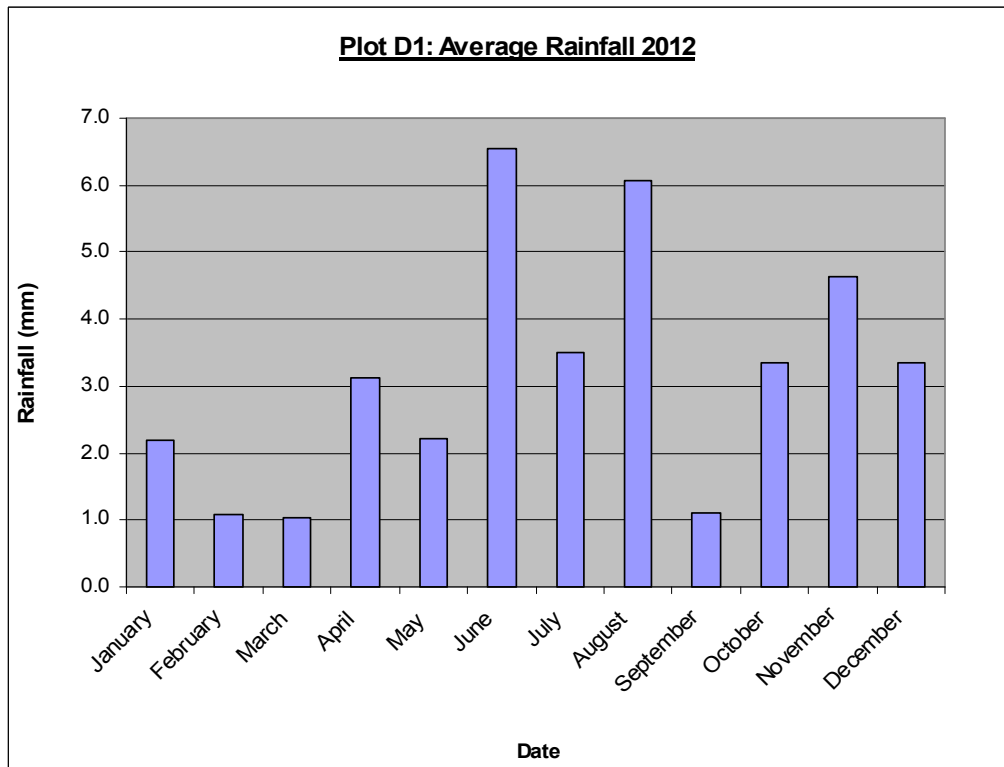


Legend

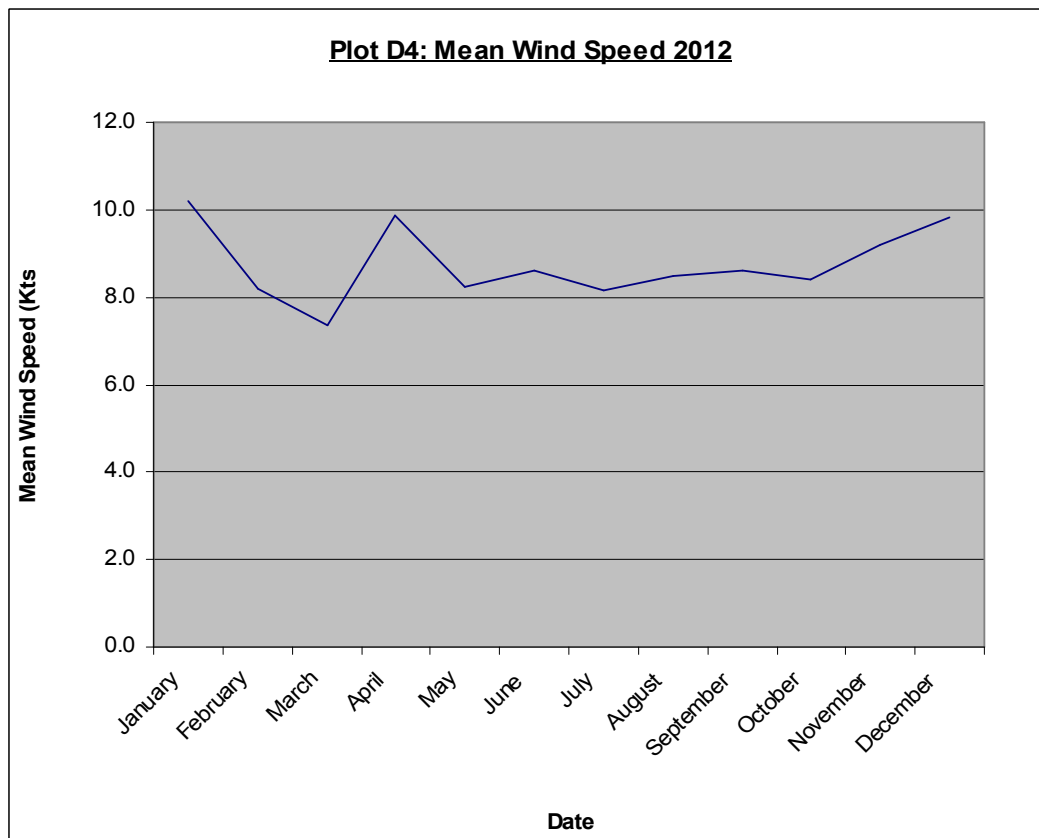
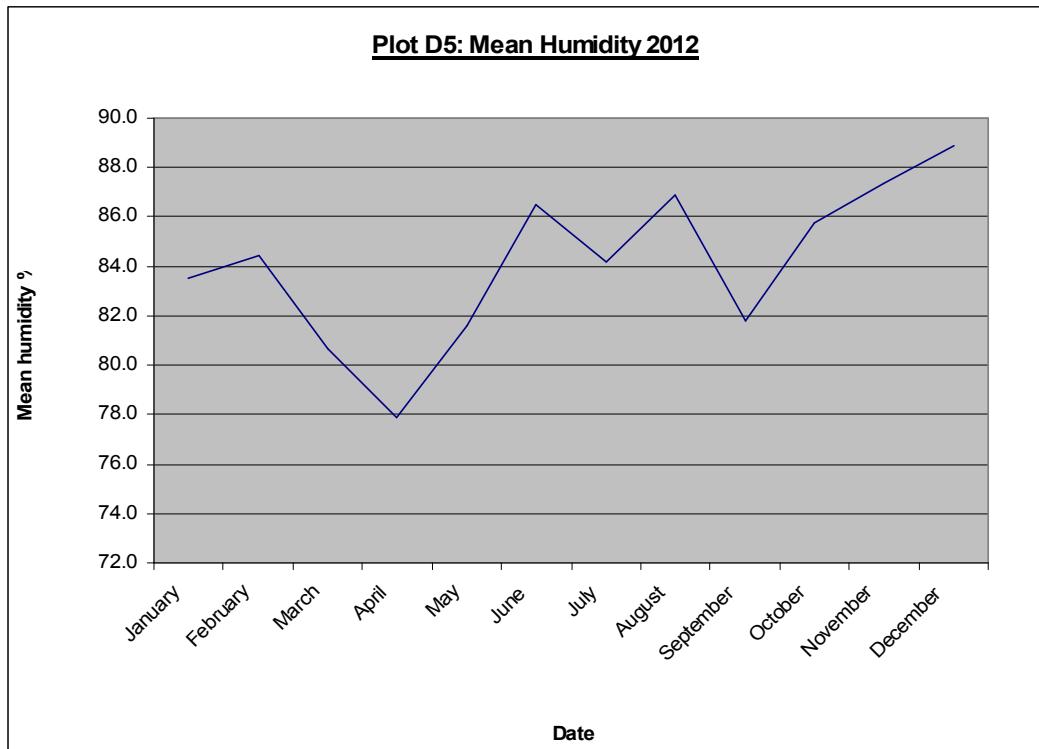
0	No detectable odour
1	Faint odour
2	Moderate odour
3	Strong odour
4	Very strong odour

D. Meteorological Data Graphs

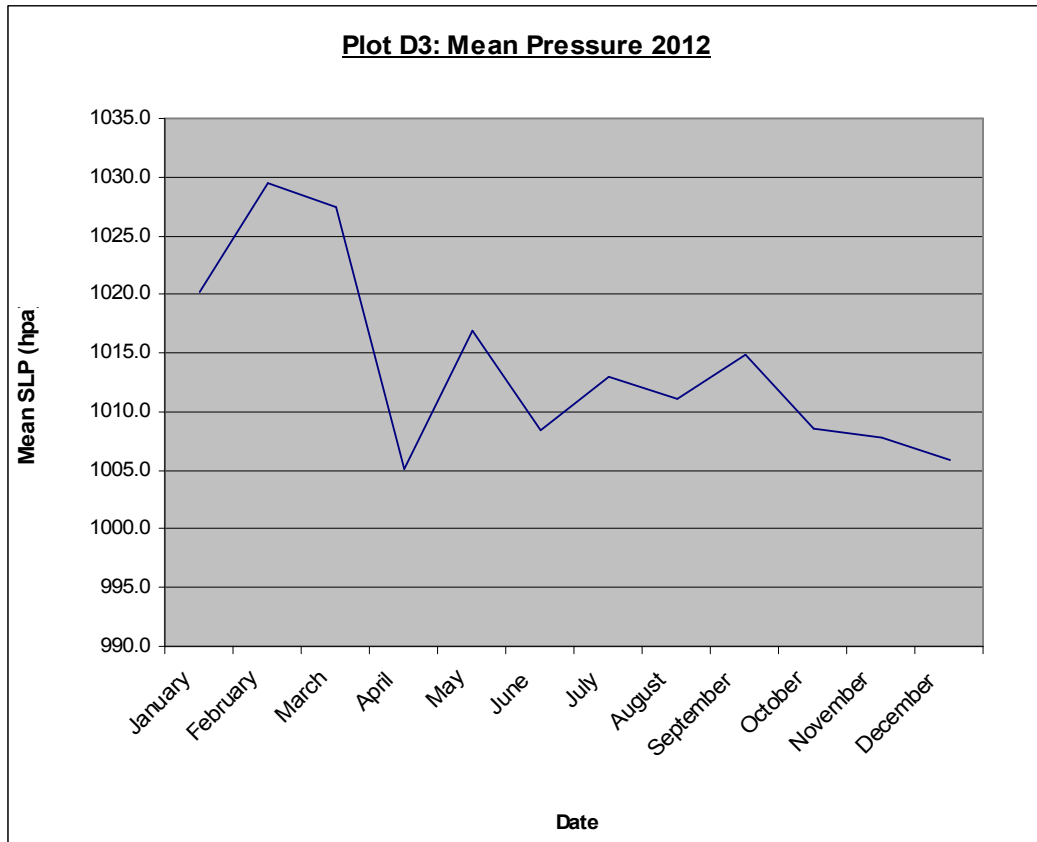
Appendix D – Meteorological Graphs



Appendix D – Meteorological Graphs



Appendix D – Meteorological Graphs



**E. Summary of waste accepted and
consigned off-site**

Waste consigned off-site from Holmestown Landfill from 1st January 2012 to 31st December 2012 (tonnes)

Waste Out	Jan	Feb	Mar	Apr	May	Jun	Jul	Aug	Sep	Oct	Nov	Dec	Yearly totals
BULKY WASTE:	0.00	0.00	0.00	0.00	19.02	77.08	68.1	68.24	43.9	33.27	37.48	39.44	386.53
BLACK BAGS:	0.00	0.00	0.00	0.00	14.2	34.08	36.66	28.04	21.26	39.68	23.96	27.54	225.42
FLY TIPPING:	0.00	0.00	0.00	0.00		16.46	16.38	12.1	7.94	7.1	14.56	12.2	86.74
TIMBER:	0.00	0.00	0.00	0.00	9.06	11.98	16.38	8.46	9.76	7.04	7.08	10.48	80.24
BATTERIES :	0.00	0.00	0.00	1.76	0.00	0.32	0.76	0.00	0.00	0.00	1.62	0.42	4.88
FLUORESCENT LIGHTS :	0.00	0.12	0.00	0.04	0.00	0.04	0.00	0.00	0.00	0.00	0.12	0.00	0.32
GLASS BOTTLES :	8.30	3.02	2.82	3.26	6.16	6.26	5.68	7.94	4.58	4.56	3.56	4.80	60.94
LEACHATE	930.60	674.94	727.30	711.98	1,034.98	2,248.14	1,691.84	3,354.02	695.76	1,843.14	1,889.04	2,305.62	18,107.36
PLASTIC BOTTLES :	3.40	3.06	1.46	3.58	3.64	3.30	4.46	3.60	3.10	3.42	4.68	2.16	39.86
TEXTILES :	1.44	0.84	0.60	1.16	1.14	1.16	1.30	1.24	1.24	1.08	1.26	0.98	13.44
SCRAP METAL	11.78	7.54	13.50	8.16	15.82	8.62	9.54	10.75	8.58	9.38	9.08	6.02	118.77
ALLUMINIUM CANS	0.22	0.06	0.10	0.08	0.46	0.30	0.24	0.16	0.16	0.12	1.00	2.00	4.90
CARDBOARD	7.58	3.42	10.50	4.78	7.24	6.30	4.10	10.18	2.68	5.36	5.96	3.50	71.60
NEWSPAPER	2.48	2.06	2.24	4.02	2.64	2.48	2.10	3.10	2.48	2.26	2.18	1.50	29.54
TETRAPACK	0.00	0.70	0.00	0.46	0.00	0.00	0.68	0.52	0.00	0.28	0.00	0.48	3.12
WASTE ELECTRONICS	17.04	14.96	19.92	12.68	15.44	14.54	14.56	18.14	14.68	13.76	20.46	11.44	187.62
WASTE ENGINE OIL	0.00	1.70	0.54	0.78	0.86	0.90	0.00	0.90	0.00	0.90	0.00	0.36	6.94
MIXED DRY RECYCABLES	3.75	2.34	5.36	1.84	3.56	5.44	3.64	4.86	2.62	2.52	4.90	2.48	43.31
OIL FILTERS	0.34	0.00	0.00	0.00	0.26	0.00	0.00	0.00	0.00	0.24	0.00	0.00	0.84
PRINT CARTRIDGES	0.00	0.12	0.06	0.11	0.00	0.00	0.04	0.00	0.00	0.16	0.00	0.04	0.53
COOKING OIL	0.00	0.00	0.00	0.00	0.00	0.42	0.00	0.00	0.00	0.00	0.00	0.44	0.86
Monthly Totals:	986.93	714.88	784.40	754.69	1,134.48	2,437.82	1,876.46	3,532.25	818.74	1,974.27	2,026.94	2,431.90	19,473.76

F. Water Balance Calculation Spreadsheet

**TABLE 1
Leachate Generation**

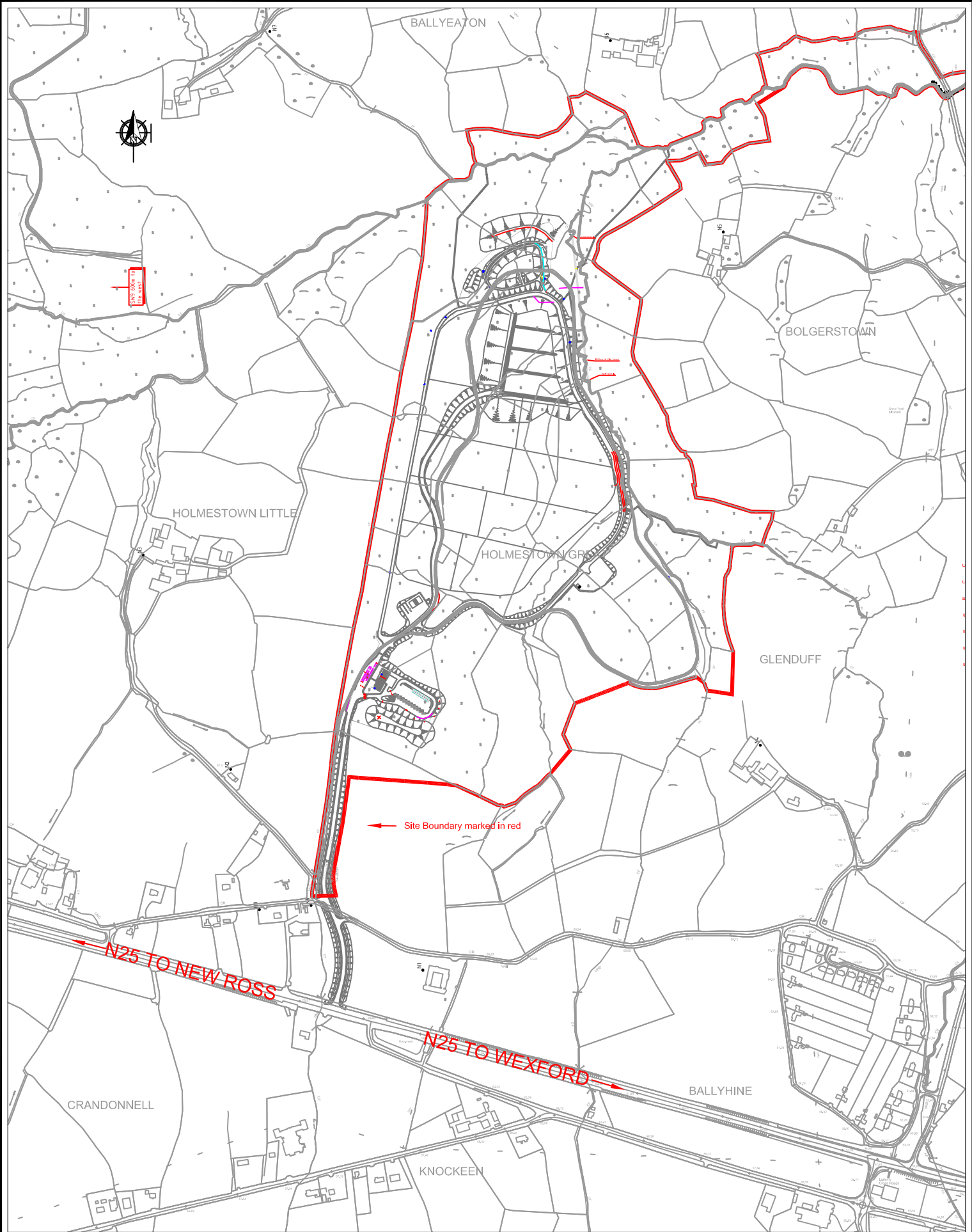
Actual rainfall					1167	mm/yr	actual data from met eireann (1st Jan to 31st dec)												
Infiltration					933.6	mm (temporary restored areas) Assumes 80% of actual rainfall													80 %
					93	mm (restored areas) Assumes runoff of													90 %
					1167	mm (waste - active and unrestored areas) - assumes all rainfall infiltrates into the waste													
Density					0.90	t/m3													
Waste input 2011					4,800.00	t													
Liquid waste input					0	m3/yr													
Absorptive Capacity					0.025	m3 per m3													
Site life					20	years													
Year	Months	Phase	Active Area	Temp Cap	Full Cap	Waste Input 2010	Active Infiltration (m³)	Temp Infiltr. m3	Restored Area Infiltration (m³)	Total Water (m³)	Cumulative Water (m³)	Absorptive Capacity (m³)	Cumulative abs. capacity (m³)	Cumulative leachate generation (m³)	leachate produced (L) (m³)	Monthly leachate generation (m³/mnt)	Leachate per day (m/day)	50% allowance	
2012 (1st Jan to 31st May)	5	1 (Cell 2,3,4)	6000	13050		4,800	2,918	5,076	0	7,994	7,994	133	133	7,861	7,861	1,572	52	79	
2011 (1st Jun to 31st Dec)	7	1 (Cell 1,2,3,4, 1b)	0	18000		0	0	9,803	0	9,803	17,797	0	133	17,663	9,803	2,523	84	126	

Total 2012 17,663

Note

Does not account for the absorption of the landfill cover in this calculation(woodchip)
Tonnages based on both waste and cover.

G. Drawings



**Wexford
County
Council**



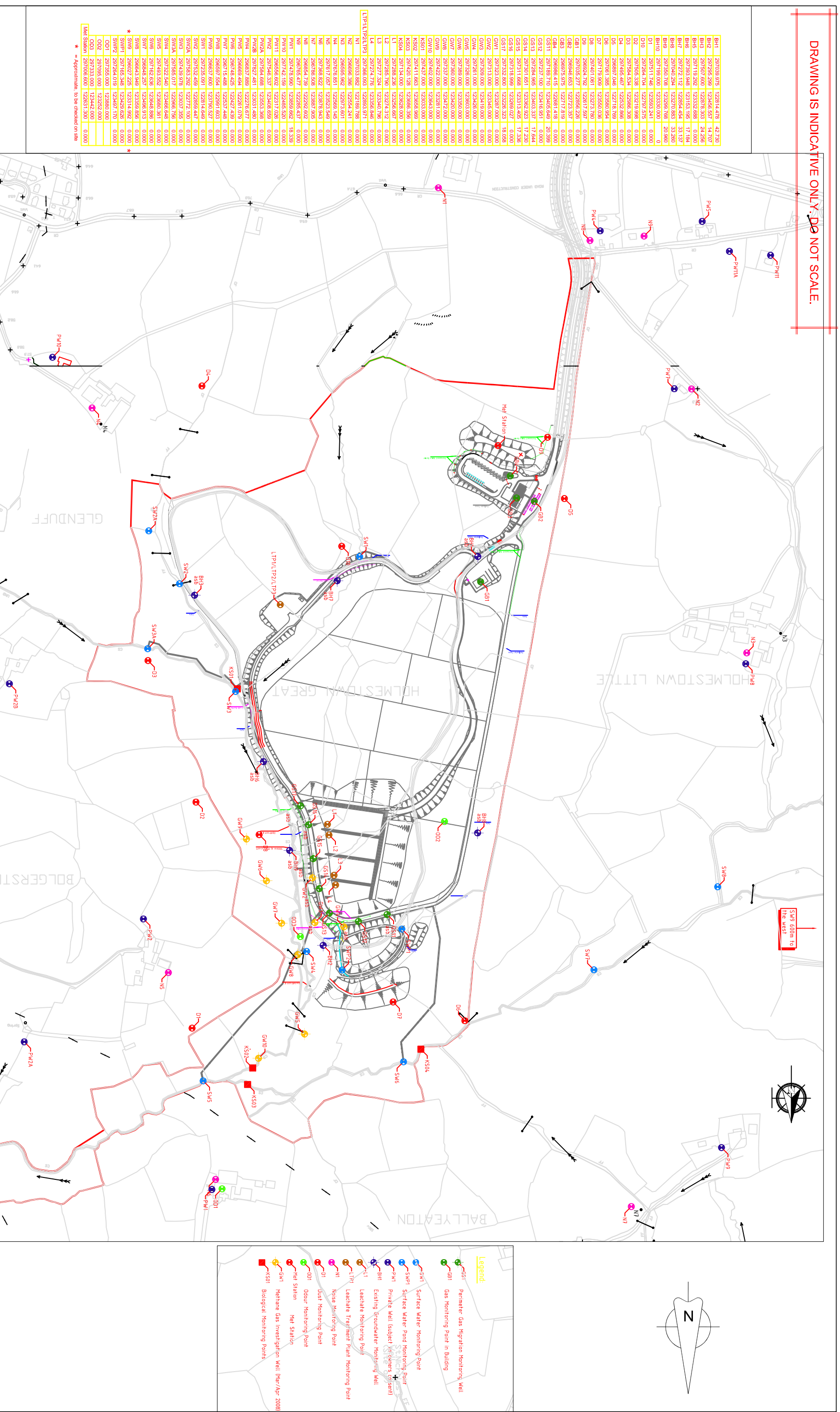
**Holmestown Waste
Management Facility**
Wexford County Council,
Wexford
Tel: 053-9120922

PROJECT TITLE:
**Holmestown Waste Management
Facility**

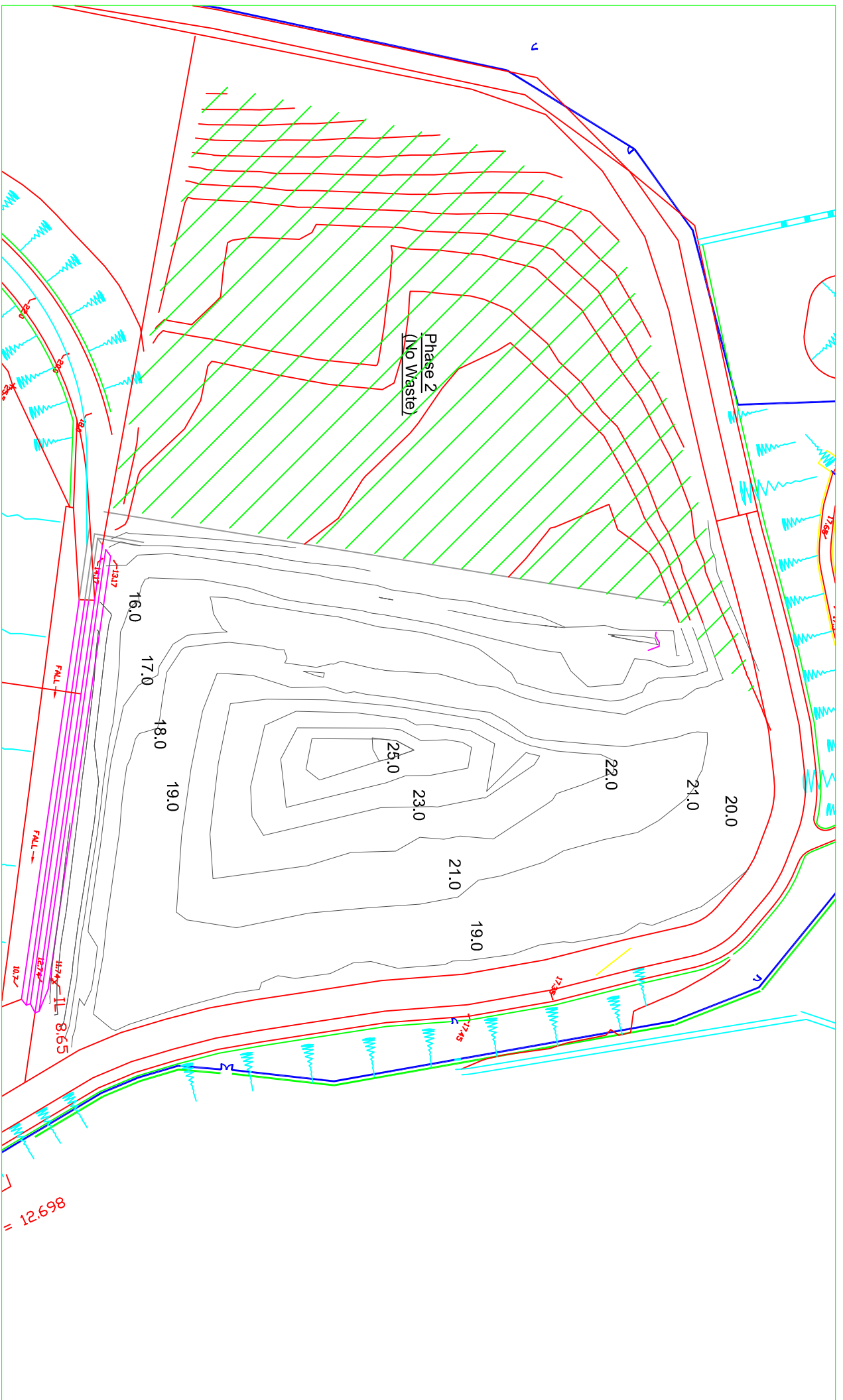
DRAWING TITLE:
**Appendix G1
Site Location Plan**

DRAWN:
CHECKED:
DATE:
SCALE:
DRAWING No.:

DRAWING IS INDICATIVE ONLY. DO NOT SCALE.



BH1	297038.976	122814.478	42.730
BH2	297295.298	123495.937	14.470
BH3	297307.600	122978.303	29.238
BH5	297318.488	123153.198	17.164
BH7	297272.112	122864.444	33.137
BH8	297040.244	123270.883	33.260
BH9	297350.708	123390.748	20.960
BH10	297199.000	123330.000	0
D1	297151.748	123583.241	0.000
D10	297264.704	122797.975	0.000
D2	297505.338	122819.898	0.000
D3	297524.534	122886.308	0.000
D4	296987.446	122718.789	0.000
D6	297173.808	123550.038	0.000
D8	297401.061	123973.789	0.000
D9	296624.792	122617.597	0.000
GB1	297035.277	122856.228	0.000
GB2	296846.653	122732.357	0.000
GB3	296875.979	122717.819	0.000
GB4	296886.418	122801.418	0.000
GB5	297118.478	122801.418	0.000
GS12	297237.100	123416.987	0.000
GS13	297284.865	123403.337	17.844
GS14	297261.657	123362.923	17.238
GS16	297311.868	12313.405	17.238
GS17	297318.998	123286.027	0.000
GS18	297332.800	12328.323	18.058
GS19	297323.000	123287.000	0.000
GS20	297313.000	123285.000	0.000
GS21	297309.000	12319.000	0.000
GS22	297298.000	12319.000	0.000
GS23	297286.000	12319.000	0.000
GS24	297274.000	12319.000	0.000
GS25	297262.000	12319.000	0.000
GS26	297250.000	12319.000	0.000
GS27	297238.000	12319.000	0.000
GS28	297226.000	12319.000	0.000
GS29	297214.000	12319.000	0.000
GS30	297202.000	12319.000	0.000
GS31	297190.000	12319.000	0.000
GS32	297178.000	12319.000	0.000
GS33	297166.000	12319.000	0.000
GS34	297154.000	12319.000	0.000
GS35	297142.000	12319.000	0.000
GS36	297130.000	12319.000	0.000
GS37	297118.000	12319.000	0.000
GS38	297106.000	12319.000	0.000
GS39	297094.000	12319.000	0.000
GS40	297082.000	12319.000	0.000
GS41	297070.000	12319.000	0.000
GS42	297058.000	12319.000	0.000
GS43	297046.000	12319.000	0.000
GS44	297034.000	12319.000	0.000
GS45	297022.000	12319.000	0.000
GS46	297010.000	12319.000	0.000
GS47	296998.000	12319.000	0.000
GS48	296986.000	12319.000	0.000
GS49	296974.000	12319.000	0.000
GS50	296962.000	12319.000	0.000
GS51	296950.000	12319.000	0.000
GS52	296938.000	12319.000	0.000
GS53	296926.000	12319.000	0.000
GS54	296914.000	12319.000	0.000
GS55	296902.000	12319.000	0.000
GS56	296890.000	12319.000	0.000
GS57	296878.000	12319.000	0.000
GS58	296866.000	12319.000	0.000
GS59	296854.000	12319.000	0.000
GS60	296842.000	12319.000	0.000
GS61	296830.000	12319.000	0.000
GS62	296818.000	12319.000	0.000
GS63	296806.000	12319.000	0.000
GS64	296794.000	12319.000	0.000
GS65	296782.000	12319.000	0.000
GS66	296770.000	12319.000	0.000
GS67	296758.000	12319.000	0.000
GS68	296746.000	12319.000	0.000
GS69	296734.000	12319.000	0.000
GS70	296722.000	12319.000	0.000
GS71	296710.000	12319.000	0.000
GS72	296698.000	12319.000	0.000
GS73	296686.000	12319.000	0.000
GS74	296674.000	12319.000	0.000
GS75	296662.000	12319.000	0.000
GS76	296650.000	12319.000	0.000
GS77	296638.000	12319.000	0.000
GS78	296626.000	12319.000	0.000
GS79	296614.000	12319.000	0.000
GS80	296602.000	12319.000	0.000
GS81	296590.000	12319.000	0.000
GS82	296578.000	12319.000	0.000
GS83	296566.000	12319.000	0.000
GS84	296554.000	12319.000	0.000
GS85	296542.000	12319.000	0.000
GS86	296530.000	12319.000	0.000
GS87	296518.000	12319.000	0.000
GS88	296506.000	12319.000	0.000
GS89	296494.000	12319.000	0.000
GS90	296482.000	12319.000	0.000
GS91	296470.000	12319.000	0.000
GS92	296458.000	12319.000	0.000
GS93	296446.000	12319.000	0.000
GS94	296434.000	12319.000	0.000
GS95	296422.000	12319.000	0.000
GS96	296410.000	12319.000	0.000
GS97	296398.000	12319.000	0.000
GS98	296386.000	12319.000	0.000
GS99	296374.000	12319.000	0.000
GS100	296362.000	12319.000	0.000
GS101	296350.000	12319.000	0.000
GS102	296338.000	12319.000	0.000
GS103	296326.000	12319.000	0.000
GS104	296314.000	12319.000	0.000
GS105	296302.000	12319.000	0.000
GS106	296290.000	12319.000	0.000
GS107	296278.000	12319.000	0.000
GS108	296266.000	12319.000	0.000
GS109	296254.000	12319.000	0.000
GS110	296242.000	12319.000	0.000
GS111	296230.000	12319.000	0.000
GS112	296218.000	12319.000	0.000
GS113	296206.000	12319.000	0.000
GS114	296194.000	12319.000	0.000
GS115	296182.000	12319.000	0.000
GS116	296170.000	12319.000	0.000
GS117	296158.000	12319.000	0.000
GS118	296146.000	12319.000	0.000
GS119	296134.000	12319.000	0.000
GS120	296122.000	12319.000	0.000
GS121	296110.000	12319.000	0.000
GS122	296098.000	12319.000	0.000
GS123	296086.000	12319.000	0.000
GS124	296074.000	12319.000	0.000
GS125	296062.000	12319.000	0.000
GS126	296050.000	12319.000	0.000
GS127	296038.000	12319.000	0.000
GS128	296026.000	12319.000	0.000
GS129	296014.000	12319.000	0.000
GS130	296002.000	12319.000	0.000
GS131	295990.000	12319.000	0.000
GS132	295978.000	12319.000	0.000
GS133	295966.000	12319.000	0.000
GS134	295954.000	12319.000	0.000
GS135	295942.000	12319.000	0.000
GS136	295930.000	12319.000	0.000
GS137	295918.000	12319.000	0.000
GS138	295906.000	12319.000	0.000
GS139	295894.000	12319.000	0.000
GS140	295882.000	12319.000	0.000
GS141	295870.000	12319.000	0.000
GS142	295858.000	12319.000	0.000
GS143	295846.000	12319.000	0.000
GS144	295834.000	12319.000	0.000
GS145	295822.000	12319.000	0.000
GS146	295810.000	12319.000	0.000
GS147	295798.000	12319.000	0.000
GS148	295786.000	12319.000	0.000
GS149	295774.000	12319.000	0.000
GS150	295762.000	12319.000	0.000
GS151	295750.000	12319.000	0.000
GS152	295738.000	12319.000	0.000
GS153	295726.000	12319.000	0.000
GS154	295714.000	12319.000	0.000
GS155	295702.000	12319.000	0.000
GS156	295690.000	12319.000	0.000
GS157	295678.000	12319.000	0.000
GS158	295666.000	12319.000	0.000
GS159	295654.000	12319.000	0.000
GS160	295642.000	12319.000	0.000
GS161	295630.000	12319.000	0.000
GS162	295618.000	12319.000	0.000
GS163	295606.000	12319.000	0.000
GS164	295594.000	12319.000	0.000
GS165	295582.000	12319.000	0.000
GS166	295570.000	12319.000	0.000
GS167	295558.000	12319.000	0.000
GS168	295546.000	12319.000	0.000
GS169	295534.000	12319.000	0.000
GS170	295522.000	12319.000	0.000
GS171	295510.000	12319.000	0.000
GS172	295498.000	12319.000	0.000
GS173	295486.000	12319.000	0.000
GS174	295474.000	12319.000	0.000
GS175	295462.000	12319.000	0.000
GS176	295450.000	12319.000	0.000
GS177	295438.000	12319.000	0.000
GS178	295426.000	12319.000	0.000
GS179	295414.000	12319.000	0.000
GS180	295402.000	12319.000	0.000
GS181	295390.000	12319.000	0.000
GS182	295378.000	12319.000	0.000
GS183	295366.000	12319.000	0.000
GS184	295354.000	12319.000	0.000
GS185	295342.000	12319.000	0.000
GS186	295330.000	12319.000	0.000
GS187	295318.000	12319.000	0.000
GS188	295306.000	12319.000	0.000
GS189	295294.000	12319.000	0.000
GS190	295282.000	12319.000	0.000
GS191	295270.000	12319.000	0.000
GS192	295258.000	12319.000	0.000
GS193	295246.000	12319.000	0.000
GS194	295234.000	12319.000	0.000
GS195	295222.000	12319.000	0.000
GS196	295210.000	12319.000	0.000
GS197	295198.000	12319.000	0.000
GS198	295186.000	12319.000	0.000
GS199	295174.000	12319.000	0.000
GS200	295162.000	12319.000	0.000
GS201	295150.000	12319.000	0.000
GS202	295138.000	12319.000	0.000
GS203	295126.000	12319.000	0.000
GS204	295114.000	12319.000	0.000
GS205	295102.000	12319.000	0.000
GS206	295090.000	12319.000	0.000
GS207	295078.000	12319.000	0.000
GS208	295066.000	12319.000	0.000
GS209	295054.000	12319.000	0.000
GS210	295042.000	12319.000	0.000
GS211	295030.000	12319.000	0.000
GS212	295018.000	12319.000	0.000
GS213	295006.000	12319.000	0.000
GS214	294994.000	12319.000	0.000
GS215	294982.000	12319.000	0.000
GS216	294970.000	12319.000	0.000
GS217	294958.000	12319.000	0.000
GS218	294946.000	12319.000	0.000
GS219	294934.000	12319.000	0.000
GS220	294922.000	12319.000	0.000
GS221	294910.000	12319.000	0.000
GS222	294898.000	12319.000	0.000
GS			



**Wexford
County
Council**



Holmestown Waste Management Facility
Wexford County Council,
Wexford
Tel: 053-9120922

Drawing Notes

Includes Ordnance Survey Ireland data reproduced under OSI Licence Number 2008/10 CGMA/ Wexford County Council.
Unauthorised reproduction infringes Ordnance Survey Ireland and Government of Ireland Copyright. ? Ordnance Survey Ireland 20

No.	Revision Description	Date	Int.	Ext.

Project Title
Holmestown Waste Management Facility

Drawing Title
Appendix G3: Landfill survey Mar 2012

Drawn: F. Ryan
Checked: FH
Date: 20-06-13
Scale: 1:6000
Surveyed FR
Drawing No. 001