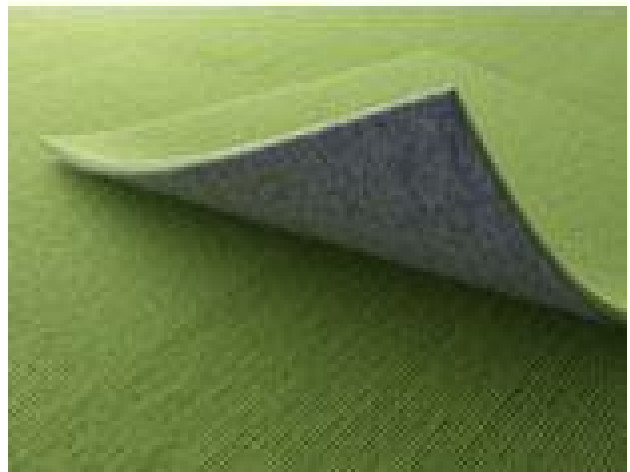
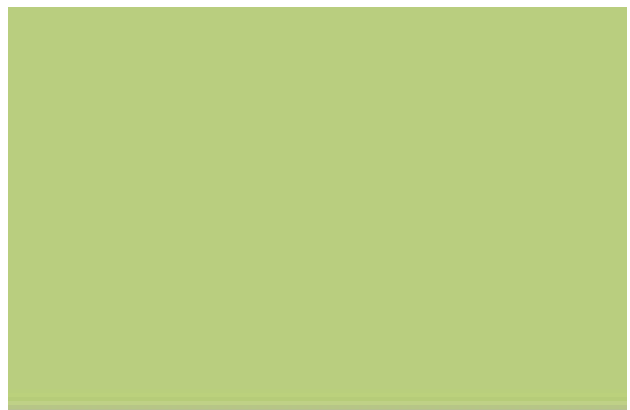


**WATERFORD CARPETS LTD
ANNUAL ENVIRONMENTAL REPORT**

2012



www.tretford.ie

TABLE OF CONTENTS

TABLE OF CONTENTS	2
LIST OF TABLES	3
1.0 Introduction	4
1.1 <i>Company Details</i>	4
1.2 <i>Company Description</i>	5
1.3 <i>Environmental Policy</i>	6
1.4 <i>Company Organisation Chart</i>	7
2.0 SUMMARY INFORMATION	8
2.1 <i>Emissions to Sewer</i>	8
2.2 <i>Emissions to Surface Waters</i>	8
2.3 <i>Emissions to Atmosphere</i>	10
2.4 <i>Waste Management</i>	11
2.4.1 <i>Hazardous Waste</i>	11
2.4.2 <i>Non-Hazardous Waste</i>	11
2.5 <i>Energy Consumption (2004-2012)</i>	13
2.6 <i>Water Consumption (2004-2012)</i>	14
2.7 <i>Environmental Incidents and Complaints</i>	15
2.8 Agency Monitoring and Enforcement	15
3.0 ENVIRONMENTAL MANAGEMENT	17
3.1 <i>Environmental Objectives and Targets</i>	18
4.0 LICENCE SPECIFIC REPORTS	20
4.1 <i>Noise Survey</i>	20
4.1.1 <i>Boundary Noise Measurements</i>	20
4.1.2 <i>Noise sensitive Locations</i>	21

LIST OF TABLES

Table 1. Emissions to Sewer for 2007 – 2012	8
Table 2 Results of Surface Water Monitoring for 2007 – 2012 (SE2)	9
Table 3 Results of Air Emissions Monitoring for 2007 – 2012	10
Table 4 Summary Information on Waste (2007 – 2012)	12
Table 5 Detailed information on Waste Streams 2012	12
Table 6 Water Consumption	14
Table 7 Boundary Noise Monitoring Results (14/09/2012)	20
Table 8 Noise Sensitive Locations Day-time Monitoring Results (14/09/2012)	21
Table 9 Noise Sensitive Locations Night-time Monitoring Results (15/09/2012)	21

1.0 Introduction

This Annual Environmental Report (AER) for Waterford Carpets Ltd presents information for the period from 1st January to the 31st December 2012. The report format follows *EPA Guidance Note for Annual Environmental Report*.

The following items are included in this report:

- Summary of emissions to atmosphere
- Summary of emissions to water
- Waste management report
- Resource consumption summary
- Complaints summary
- Reported incidents summary
- Environmental management programme report and proposal
- Schedule of objectives and targets
- Noise survey results summary
- Water usage report

Waterford Carpets Ltd. has developed its environmental policy as part of its environmental management system. The company has been granted with ISO 14001 Environmental Management Systems Standard Certification in October 2008.

1.1 Company Details

Licence Register Number:	P0510-01
Name:	Waterford Carpets Limited.
Address:	Unit 201 Cork Road Industrial Park, Waterford.
Contact Information:	Mr. Noel Cunningham Managing Director Tel: 051-375941 Email: ncunningham@tretford.ie
	Mr. Bart Zdrojowy Environmental / Technical Manager Email: bart@tretford.ie

1.2 Company Description

Waterford Carpets Limited has been in operation since September 1969 in the IDA Industrial Park Waterford. Waterford Carpets Limited manufactures a ribbed heavy contract non-woven carpet. This carpet is manufactured under the trade name **tretford**. The carpet is manufactured from a combination of goat hair, nylon, rayon and wool.

No dyeing or treatment of the carpet takes place on the site at present, nor does the process of moth proofing.

Waterford Carpets Limited operates a continuous production system from 08:00 Monday to 08:00 Saturday on a three-shift rota system. Over 2009 - 2011 period production was run in short time patterns starting from 3-day week to week-on week-off basis.

At present Waterford Carpets Limited employs 40 personnel.

Waterford Carpets management and staff recognise the importance of environmental protection as an essential requirement of its operations. Among the stated values of Waterford Carpets are the following:

- That our products will be safe to make and to use.
- We will conserve natural resources and we will continue to invest in better environment protection.
- Waterford Carpets Ltd. will undertake to conduct its business in a manner, which protects the environment of the Customers, Employees and Community in which it operates.

The challenge is to achieve a high quality environment, to this end; the company is committed to continuous improvement - "reduce, reuse & recycle"- at all levels throughout the organisation.

1.3 Environmental Policy

The General Management of Waterford Carpets Limited is committed to pollution prevention and environmental protection at its facility. Waterford Carpets Limited aims to achieve the highest standards of environmental performance in the interest of all our stakeholders, whether they are employees, neighbours, the general public or the natural environment.

Waterford Carpets Limited is committed to complying with all environmental legislation and regulations that may apply to the industry and we will make every effort to comply with the requirements of our Integrated Pollution Control Licence. We will adhere to the principles of responsible care and we strive for continuous improvement in its implementation.

By preparing and implementing an Environmental Management System, which will include policies, objectives and targets, we will administer a continuous programme designed to ensure that the products manufactured at Waterford Carpets Limited will not compromise or damage the environment.

Waterford Carpets Limited will review the Environmental Management System annually. We will also review our environmental aspects register and set Environmental Objectives and targets accordingly.

Waterford Carpets will examine and evaluate the environmental implications of any processes and products, and cleaner technologies will be investigated and utilised where possible. Waste avoidance and reduction plus a waste recycling initiative will be vigorously pursued and implemented.

Waterford Carpets will continuously examine, evaluate and review energy usage in its manufacturing processes and implement an energy conservation programme. We will ensure that adequate operational procedures and emergency plans are implemented and reviewed on an ongoing basis. We will ensure that our employees receive adequate training in relation to our environmental policies and procedures and will review these training needs as may be required.

We are committed to continuous improvement of our Environmental Management System and we will ensure that it shall be integrated at all levels within our organisation. We will strive for ever-improving environmental performance and we will strive to protect the environment for our employees, neighbours and all our other stakeholders.

Noel Cunningham
Managing Director

1.4 Company Organisation Chart

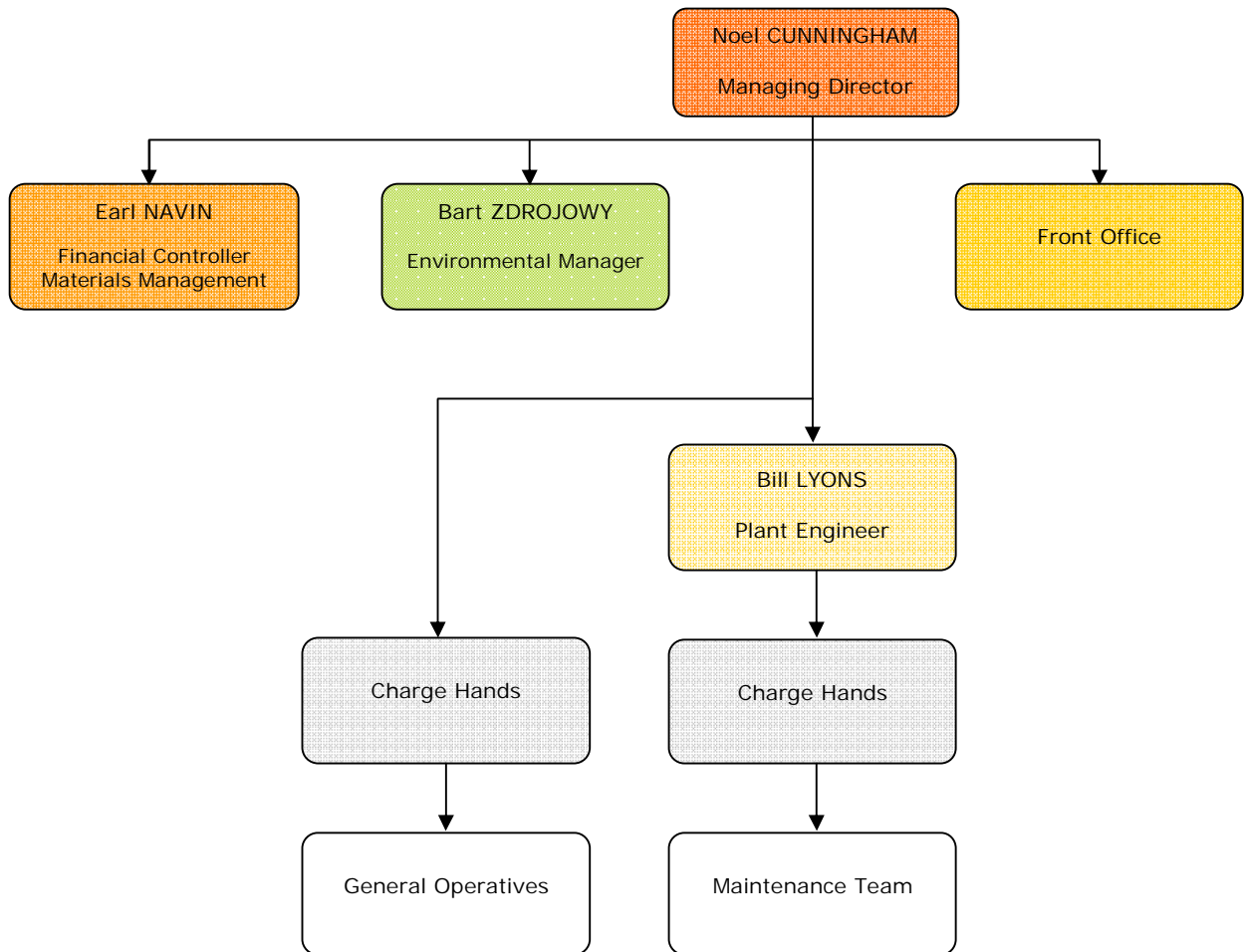


Figure 1. Organisation Chart for Waterford Carpets Ltd.

NB. Environmental Manager has direct environmental responsibilities. All other employees have support roles.

2.0 SUMMARY INFORMATION

This section contains a summary of the information regarding:

- Annual emissions data, including discharges to waters, air emissions, waste management and noise.
- Energy and water usage
- Environmental incidents and complaints

This section of the AER provides summary data on emissions/discharges to various environmental media from the Waterford Carpets site.

2.1 Emissions to Sewer

This section of the AER provides information pertaining to Waterford Carpets emissions to sewer. The emissions to sewer data indicate overall compliance with the IPPC emission limit values (ELV's). There were no non-compliances recorded during 2012.

Table 1. Emissions to Sewer for 2008 – 2012

Parameter	18/12/2008	22/12/2009	15/12/2010	01/12/2011	20/11/2012	Limit Value	Monitoring Frequency
Temperature	16°C	15°C	19°C	21°C	22°C	40°C max	Annually
PH	7.6	7.5	7.1	7.6	7.1	6-9	Annually
BOD (mg/L)	<2	10	9	11	10	60	Annually
COD (mg/L)	<4	104	95	104	82	1000	Annually
Suspended Solids (mg/L)	1	5	6	5	4	120	Annually

2.2 Emissions to Surface Waters

Waterford Carpets discharges non-process water at discharge points SE2 in accordance with Schedule 4(i) of the IPPC Licence (Reg. No. P0510-01).

Non-process water consists of:

- Storm water run-off from roofs.
- Storm water run-off from areas including car parks and paved areas.

Surface water discharges at SE2 are measured on a quarterly basis for pH, COD and conductivity. A visual inspection takes place twice weekly.

A summary of the surface water discharge monitoring results is outlined in the table below.

Table 2 Results of Surface Water Monitoring for 2008 – 2012 (SE2)

Q1		12/01/2008	17/01/2009	9/03/2010	15/03/2011	30/03/2012	Limit Value
	pH	6.9	7.5	n/a*	6.9	7.1	6-9
	COD (mg/l)	24	10	n/a*	26	26	-
	Conductivity (uS/cm)	289	154	n/a*	140	109	-
Q2		22/04/2008	15/04/2009	25/06/2010	21/06/2011	20/06/2012	Limit Value
	pH	7.7	7.1	7.2	7.1	6.9	6-9
	COD (mg/l)	84	12	21	20	41	-
	Conductivity (uS/cm)	185	161	154	110	152	-
Q3		19/08/2008	08/09/2009	18/08/2010	14/09/2011	05/09/2012	Limit Value
	pH	7.4	7.2	7.2	6.4	7.5	6-9
	COD (mg/l)	73	18	11	17	40	-
	Conductivity (uS/cm)	203	138	164	106	127	-
Q4		18/12/2008	22/12/2009	13/10/2009	01/12/2011	20/11/2012	Limit Value
	pH	7.3	7.1	7.1	7.2	7.0	6-9
	COD (mg/l)	7	14	14	19	39	-
	Conductivity (uS/cm)	178	109	103	127	114	-

*While taking water sample for testing an oily contamination was found in water coming up from the industrial estate. EPA, IDA and Waterford City Council were informed and arrived on site. Sample contaminated, not fit for testing.

Since 2002 surface water monitoring results are within the limits set in IPPC licence Reg. No. P0510-01. No results are available prior to that.

2.3 Emissions to Atmosphere

The emissions to atmosphere monitoring at Waterford Carpets Ltd. was carried out to fulfil the requirements of Condition 5 and Schedule 1(i) of IPPC licence registration number P0510-01. Air Emissions Monitoring started in 2002; the results available since demonstrate compliance with the IPPC Licence limit value.

Table 3 Results of Air Emissions Monitoring for 2008 – 2012

	A2-1	A2-2	A2-3	A2-4	A2-5	A2-06	Limit Value (mg/Nm ³):
Sampling date:	10/12/2012 01/12/2011 08/03/2010 NIU 22/04/2008	19/12/2012 15/03/2011 08/03/2010 22/12/2009 22/04/2008	20/12/2012 15/03/2011 15/12/2010 08/09/2009 15/12/2008	20/11/2012 15/03/2011 NIU 15/04/2009 18/12/2008	NIU 01/12/2011 18/08/2010 22/12/2009 18/12/2008	10/12/2012 07/12/2011 13/10/2010 - -	
2012	5.21	3.52	4.65	8.29	-	2.37	50
2011	1.01	4.30	7.15	5.31	6.48	2.01	50
2010	5.60	8.45	13.16	-	1.58	2.14	50
2009	-	7.74	4.63	2.11	2.50	-	50
2008	8.87	15.25	7.19	8.72	5.73	-	50

NIU – Not in use

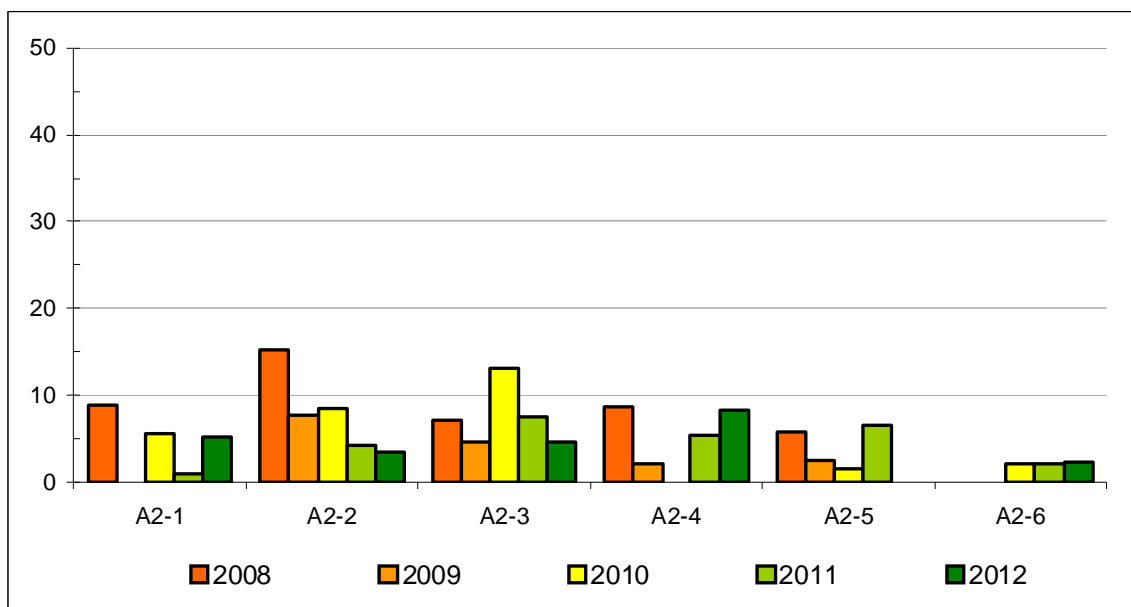


Figure 2 Particulate Emissions 2008-2012. ELV is set on 50mg/Nm³.

2.4 Waste Management

Waterford Carpets Ltd. maintains full details and records of all waste arising on site in accordance with Condition 7 of the IPPC Licence. This section of the Annual Environmental Report (AER) provides comprehensive information regarding these wastes.

A full record, which shall be open to inspection by authorised persons of the Agency at all times, shall be kept by the licensee on matters relating to the waste management operations and practices at this site.

The records shall as a minimum contain details of the following:

- The names of the agent and transporter of the waste.
- The name of the persons responsible for the ultimate disposal/recovery of the waste.
- The ultimate destination of the waste.
- The tonnage and EWC code for the waste materials listed in schedule 3(1) Hazardous Waste for Disposal/Recovery and schedule 3(2) Other Wastes for Disposal/Recovery sent off site for Disposal/Recovery.
- Details of any rejected consignments.
- The tonnage and EWC code for the waste materials listed in schedule 3(1) Hazardous Waste for Disposal/Recovery and schedule 3(2) Other Wastes for Disposal/Recovery recovered/disposed of on site.

A summary of the waste quantities generated at the Waterford Carpets site is included in Table 2.7. A copy of waste management record is attached.

2.4.1 Hazardous Waste

The main source of hazardous waste generated on-site is waste PVC adhesive. Other than that are MV lamps, fluorescent tubes and batteries. All hazardous wastes generated are stored in designated hazardous waste storage areas.

Indaver processes waste adhesive and fire-retardant while Irish Lamp Recycling collects mercury vapour lamps, fluorescent tubes and batteries.

No ILR collections were recorded in 2012.

2.4.2 Non-Hazardous Waste

The main disposed non-haz wastes include carpet trimmings and fibres and general (office/canteen) waste. Non-hazardous wastes destined for recovery were: baled cardboard and cardboard cores, timber pallets and boxes and scrap metal.

Table 4 Summary Information on Waste (2008 – 2012)

	2008	2009	2010	2011	2012	Note
Total quantity of waste (Tonnes)	265.40	128.60	198.43	138.32	129.24	
disposed of off-site	234.00	110.08	166.80	94.43	101.05	D1
recovered on-site	2.00	-	-	-	-	R0
recovered off-site	29.40	18.52	31.63	43.89	28.19	R3, R4, R5
Non-hazardous waste (Tonnes)	264.10	127.84	198.40	135.60	129.24	
disposed of off-site	234.00	110.08	166.80	94.43	101.05	D1
recovered on-site	2.00	-	-	-	-	R0
recovered off-site	28.10	17.76	31.60	41.17	28.19	R3, R4, R5
Hazardous waste (Tonnes)	1.30	0.76	0.03	2.72	-	
disposed of off-site	-	-	-	-	-	-
recovered off-site	1.30	0.76	0.03	2.72	-	R3, R4

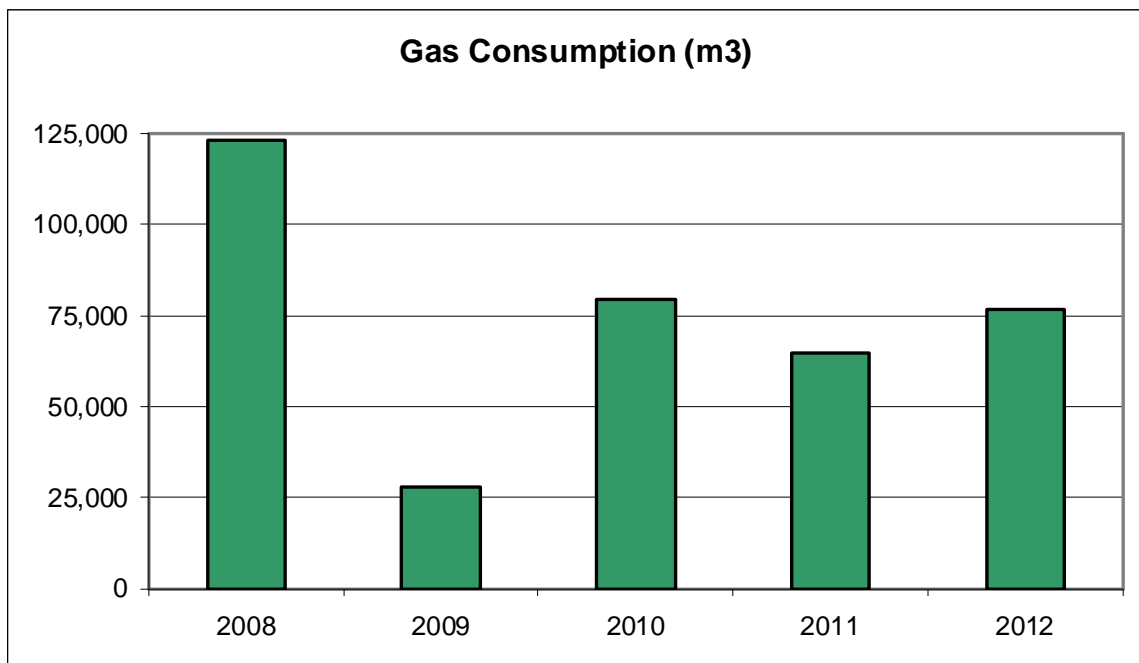
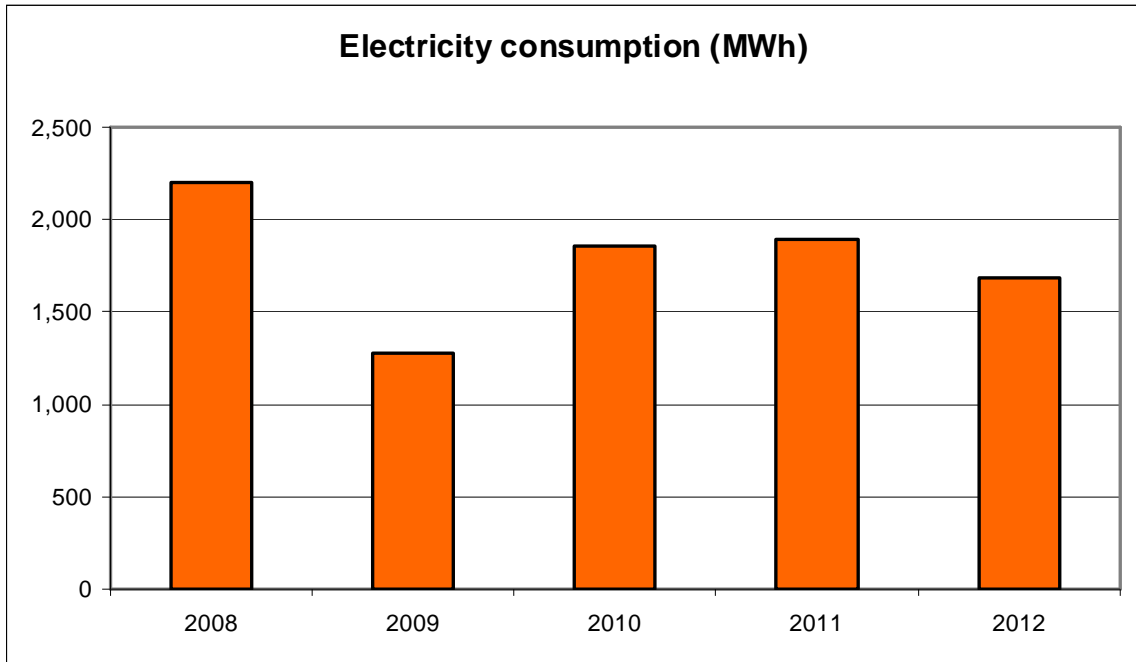
Table 5 Detailed information on Waste Streams 2012

European Waste Catalogue Code	Haz (Yes/No)	Description of Waste	Quantity (t/year)	Disposal/ Recovery Code	Location of Disposal/ Recovery	Name of Waste Disposal/ Recovery Contractor
Non hazardous:						
20 03 01	N	mixed municipal waste	101.05	D1	(b) Six Crossroads Bus. Pk	Greenstar
20 01 01	N	paper and cardboard	25.61	R3	(b) Six Crossroads Bus. Pk	Greenstar
15 01 04	N	metallic packaging	2.58	R4	(b) Enniscorthy	Molloy Metal Recycling Ltd.

(a) On-site; (b) Off-site (Ireland); (c) Off-site (abroad)

2.5 Energy Consumption (2008-2012)

	2008	2009	2010	2011	2012
Electricity (MWh)	2,201	1,279	1,859	1,894	1,682
Gas (m ³)	123,264	28,122	79,714	64,676	76,802



2.6 Water Consumption (2004-2012)

Table 6 Water Consumption

	2008	2009	2010	2011	2012
Cubic m	1,427	1,253	2,530	1,597	933
Gallons	314,000	-	-	-	-

Since 2009 water reading reported in cubic metres. Higher than usual water consumption in 2010 due to leakage from corroded water tank, tank replaced.

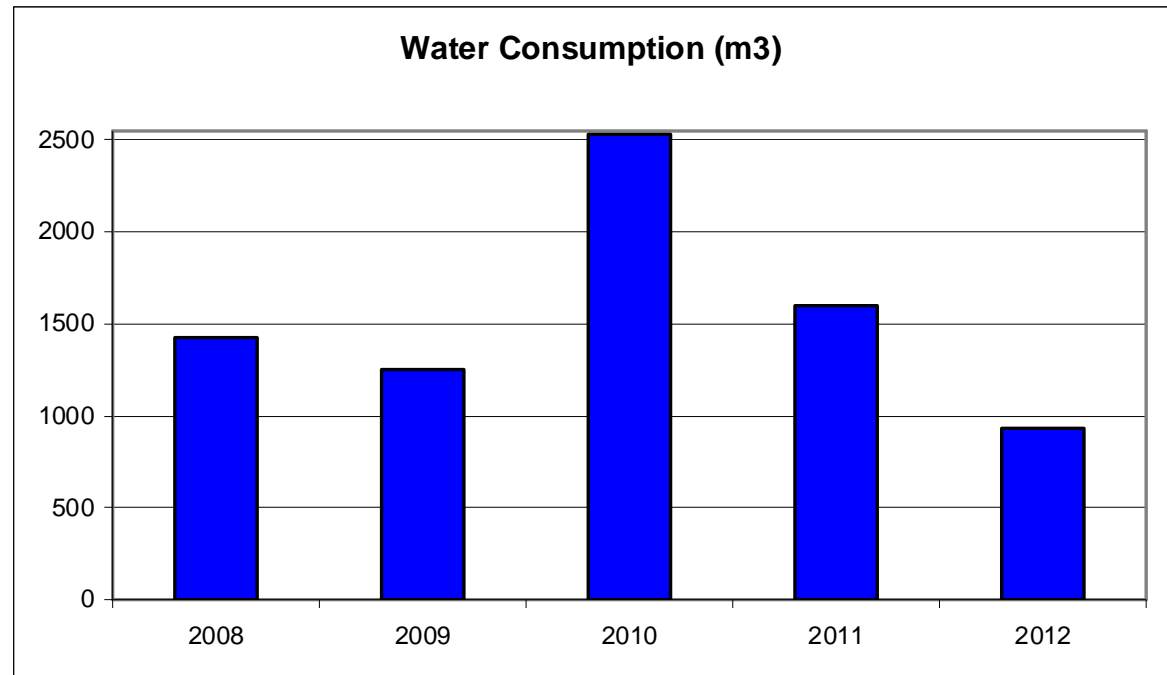


Figure 3 Water Consumption (m³)

2.7 Environmental Incidents and Complaints

There were no environmental incidents recorded or reported during the 2012 period

There was no environmental complaints received for the period
January to December 2012

2.8 Agency Monitoring and Enforcement

There was one unannounced visit by the agency to Waterford Carpets Ltd during 2012.

Inspection Reference Number: (P0510-01)sm11dob

This visit took place on the 24th January 2012 and was an unannounced visit by Mr Darragh O'Brien of the EPA. Waterford Carpets Ltd was found to be non compliant with three condition of their IPPC licence.

1. Training

- The licensee has failed to provide appropriate training for all personnel whose work can have a significant effect upon the environment. Appropriate records of staff training in environmental awareness are not being maintained on site. A similar non-compliance was noted on the previous inspection reports (doc. ref. P510-01sm10eok, P510-01\sm09eok and P510-01\sm07djm).

Corrective Action:

- There were three sessions of personnel training in environmental awareness in the fourth quarter 2012, namely 22nd and 31st October and 5th November. Training records are available on site for inspection.

2. Accident Prevention Policy

- The Accident Prevention Policy was not available on site for review. A similar non-compliance was noted on the previous site inspection report (doc. ref. P0510-01sm10eok)

Corrective Action:

- Accident Prevention Policy is now available for review.

3. Bunding

- Not all of the bunds in use at the facility have been tested within the last three years. Bund integrity tests carried out within the past three years were only available for the bunds used for the IBC's containing latex in the glue room area.

Corrective Action:

- A bund testing programme has been initiated to ensure all bunds are tested according to requirements. A hydrostatic test for the bund under the header tank has been called off until waste glue contained within the bund is cleaned out. Quotation for the cleaning works is available and awaiting acceptance.

There were five inspection observations also noted which did not constitute non-compliances but should be addressed.

1. Q4 2011 Monitoring

- Monitoring data for emission to sewer (SE-1), air emissions (A2-1, A2-5, A2-6) and surface water emissions (SW-a) for quarter 4 of 2011 was not available for inspection.

The licensee reported that monitoring of emissions at these points had been undertaken in December 2011.

Corrective Action:

- Contractor has addressed the issue. All reports missing at the time of the audit are now available on-site and the results were included in the 2011 AER.

2. Hazardous Materials

- A number of drums containing Progard FR3 and IBC's containing latex were noted in the glue room area. There were no hazardous labels on the drums of Progard FR3 or on the IBC's containing latex. There were number of IBC's stacked up on top of each other, which may compromise the capacity of the bund.

Corrective Action:

- Progard FR3 drums and latex IBC's are marked according to MSDS file descriptions. The former is considered harmless the latter present slight hazard to aquatic environment. MSDS files were and are available for charge hands and all employees are aware of product characteristics. Two IBC's noted to be stacked on top of the other were empty and contained no latex which may have caused confusion. Staff is instructed of the maximum bund capacity and observes the rules.

3. Emergency Response Procedure

- The Emergency response Procedure for the site does not include the control of spills and firewater. A similar observation was noted on the previous site inspections (doc. ref. P0510-01sm10eok, P0510-01\sm09eok and P0510-01\sm07djm).

Corrective Action:

- The reviewed Emergency Response Manual does incorporate Spillage and Firewater Control procedure and Accident Prevention Policy.

4. Underground Pipeline Testing

- The records of underwater pipeline testing currently at the facility are not acceptable as sufficient detail was not included as to the testing that was carried out and the findings of the testing.

Commentary:

- CCTV survey of underground pipelines had not been carried so far due to financial constraints. We believe underground pipelines catering only run-off rain water from rooftops are in good order and pose no danger to local environment. CCTV survey is to be carried out at the earliest convenience.

5. Surface Water Monitoring Point

- The surface water monitoring point, SW1 was not labelled.

Commentary:

- Surface water monitoring point (SE02) was and is marked by the "Surface Water" label on the facility south wall by the air vents.

3.0 ENVIRONMENTAL MANAGEMENT

Waterford Carpets Ltd. operate and maintain the ISO 14001 certified Environmental Management System (EMS). Therefore the company has documented and implemented an EMS and complies with the requirements of Condition 2.2 of the IPPC Licence (Reg. PO510-01).

A schedule of Environmental Objectives and Targets has been developed by Waterford Carpets in accordance with Condition 2.2.2 of the IPPC Licence. These have been included in the Environmental Management Programme, which designates responsibility for the various objectives and targets. The EMP also outlines the means by which the Objectives and Targets may be achieved and the timescales involved in accordance with Condition 2.2.2.2 of the IPPC Licence. The EMP is revised and updated as required.

Programmes and procedures are in place to ensure effective management and control.

3.1 Environmental Objectives and Targets

2012 Schedule of Objectives and Targets				
Prepared by: Bart Zdrojowy, Environmental Manager				Date: February 2013
Approved by: Noel Cunningham, Managing Director				
	Target	Plan	Responsible Party	Timescale (for completion)
Objective 1 Waste 1.1 Non-hazardous waste 1.2 Hazardous waste Lower amount of landfill waste created per sqm of product	Waste production monitoring	Implement monitoring programme in each department	Environmental Manager	Complete by 1Q 2014.
		Identify critical areas	Environmental Manager	Complete by 2Q 2014
	Alternative paths for landfill waste.	Investigate composting options	Environmental Manager	Complete by 1Q 2014
		Investigate alternative use for small rolls / 2 nd grade / off-cuts	Environmental Manager	Complete by 2Q 2014
		More effective collection and recycling of plastic wrapping	Environmental Manager	Complete by 3Q 2014
Objective 2 Gas and Energy usage Control gas & energy usage. Lower CO2 emissions.	Track energy usage and charges	Review charges for 2013, renew contracts	Environmental Manager	Ongoing process.
	Lower CO2 emissions	100% Green (renewable) Electricity Contract Re-signed	Managing Director / Environmental Manager	Completed
	Energy Efficiency Audit	Review recommendations	Environmental Manager / Plant Engineer / MD	Complete by 4Q 2014
		Implement where possible	Environmental Manager / Plant Engineer	Complete by 2Q 2015

Objective 3 Housekeeping	Glue Room Housekeeping	Header Tank Bund emptied + cleaned	Contractor / Environmental Manager	Complete by 4Q 2014 1Q <input type="checkbox"/> <input type="checkbox"/> <input type="checkbox"/> <input type="checkbox"/> 1Q <input type="checkbox"/> <input type="checkbox"/> <input type="checkbox"/> <input type="checkbox"/>
		Hydrostatic tests carried out on all bunds	Environmental Manager	Complete by 4Q 2014 1Q <input type="checkbox"/> <input type="checkbox"/> <input type="checkbox"/> <input type="checkbox"/> 1Q <input type="checkbox"/> <input type="checkbox"/> <input type="checkbox"/> <input type="checkbox"/>
	Underground Pipelines	Conduct CCTV survey on underground rain water pipelines	Contractor / Environmental Manager	Complete in 2013 1Q <input type="checkbox"/> <input type="checkbox"/> <input type="checkbox"/> <input type="checkbox"/> 1Q <input type="checkbox"/> <input type="checkbox"/> <input type="checkbox"/> <input type="checkbox"/>

4.0 LICENCE SPECIFIC REPORTS

4.1 Noise Survey

4.1.1 Boundary Noise Measurements

Table 7 Boundary Noise Monitoring Results (19/09/2012)

Boundary Noise Day-time Results							
Location No.	Location description	Measurement Period (Min.)	Sampling Time	L _{eq} dB(A)	L ₁₀ dB(A)	L ₉₀ dB(A)	Comments
1	South West Corner Across from workshop	15	8:00	54	54	51	Traffic on the Industrial Estate which was heavy and clearly audible at this location
2	West Face – Across from glue mixing	15	8:05	54	54	49	Traffic on the Industrial Estate which was heavy and clearly. There was no audible noise from the Waterford Carpets facility. The roller shutter door to the Glue Mixing Area was closed.
3	North West Corner	15	08:20	51	52	49	Traffic on the Industrial Estate. No noise audible from the factory.
4	North Face	15	08:27	50	51	47	Traffic on the Industrial Estate. No audible noise from Waterford Carpets facility.
5	North East Corner	15	8:45	49	49	46	Traffic on the Industrial Estate and on Lismore Park Road. No audible noise from Waterford Carpets facility.
6	East Face – across from Loading Bay	15	8:50	49	53	49	The predominant source of noise was traffic on the Industrial Estate.
7	South east Corner – Main Entrance	15	9:10	54	53	49	Traffic on the Industrial Estate. No audible noise from Waterford Carpets facility.
8	South Face	15	9:15	58 L _{ar} = 63dB	58	54	The predominant source of noise was traffic on the Industrial Estate and the compressor which was operating in this area. Because the noise can be characterised as tonal a penalty of +5dB was added to the level.

Results marked red exceeds the specified day-time limit of 55 dB(A)

4.1.2 Noise sensitive Locations

Table 8 Noise Sensitive Locations Day-time Monitoring Results (19/09/2012)

Noise Sensitive Location Day-time Results							
Location No.	Location description	Measurement Period (Min.)	Sampling Time	L _{eq} dB(A)	L ₁₀ dB(A)	L ₉₀ dB(A)	Comments
9	No. 10 Lismore Park	15	9:50	52	55	49	The predominant source of noise was traffic on Lismore Park Road, which was relatively light during the measurement period.
10	No. 95 Lismore Park	15	10:10	51	54	50	The predominant source of noise was traffic on Lismore Park Road. No audible noise from the Waterford Carpets facility.
11	No. 112 Lismore Park	15	10:30	50	54	59	The predominant source of noise was traffic on Lismore Park Road. No audible noise from the Waterford Carpets facility.
12	No. 123 Lismore Park	15	10:50	52	53	49	The predominant source of noise was traffic on Lismore Park Road. No audible noise from the Waterford Carpets facility.

Results marked **red** exceeds the specified day-time limit of 55 dB(A)

Table 9 Noise Sensitive Locations Night-time Monitoring Results (19/09/2012)

Noise Sensitive Location Night-time Results							
Location No.	Location description	Measurement Period (Min.)	Sampling Time	L _{eq} dB(A)	L ₁₀ dB(A)	L ₉₀ dB(A)	Comments
9	No. 10 Lismore Park	15	05:45	44	46	41	No audible noise from Waterford Carpets facility. A number of vehicles passed close to the sound level meter during the monitoring period.
10	No. 95 Lismore Park	15	06:05	41	43	41	No audible noise from factory. A number of vehicles passed close to the sound level meter during the monitoring period.
11	No. 112 Lismore Park	15	06:25	42	42	40	No audible noise from the Waterford Carpets facility.
12	No. 123 Lismore Park	15	06:45	44	43	40	No audible noise from the Waterford Carpets facility.

Results marked **red** exceed the specified night-time limit of 45 dB(A)

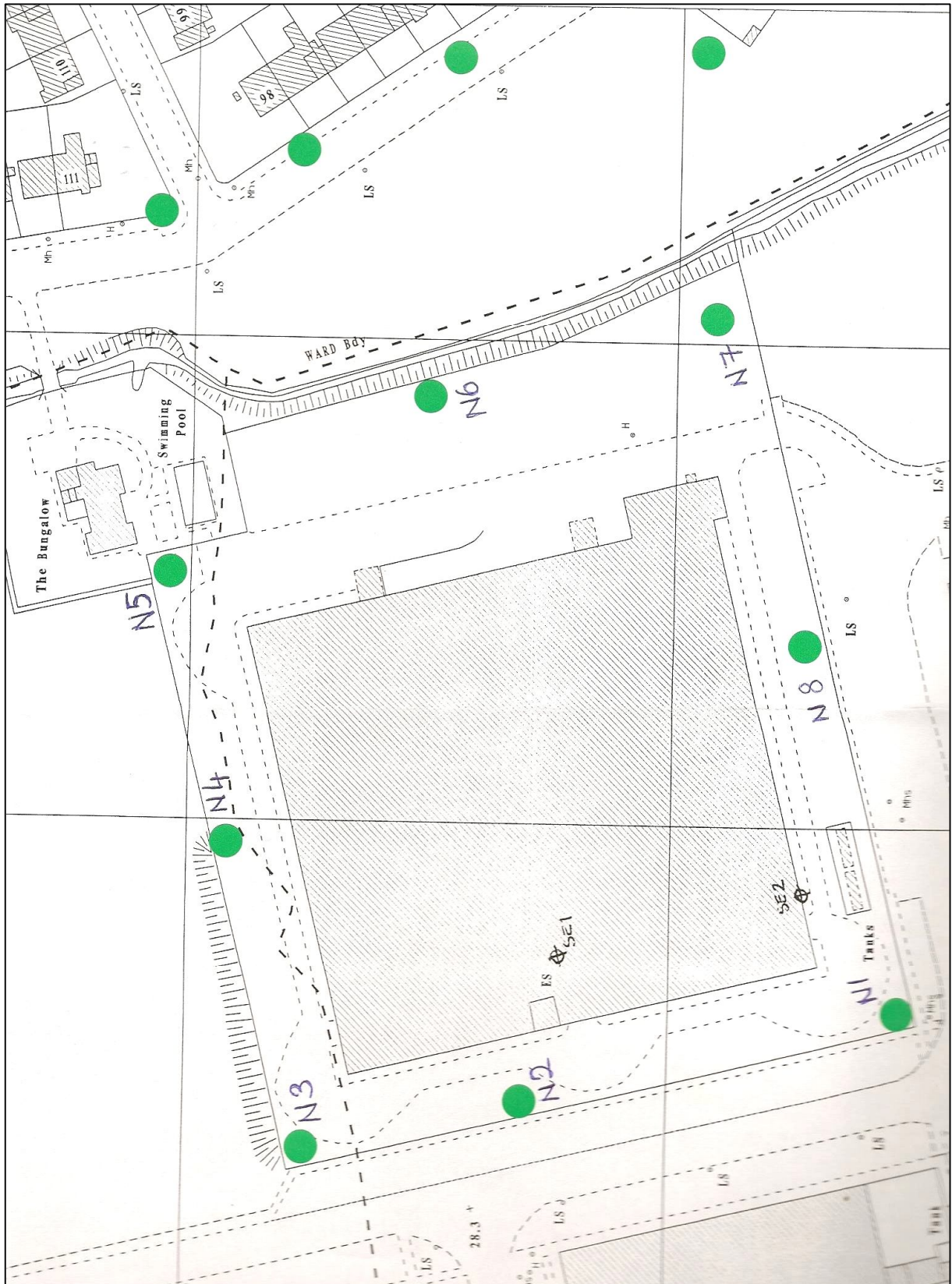


Figure 4 Location of noise monitoring points



Environmental Protection Agency

| PRTR# : P0510 | Facility Name : Waterford Carpets Limited | Filename : P0510_2012.xls | Return Year : 2012 |

[Guidance to completing the PRTR workbook](#)

AER Returns Workbook

Version 1.1.16

REFERENCE YEAR	2012
-----------------------	------

1. FACILITY IDENTIFICATION

Parent Company Name	Waterford Carpets Limited
Facility Name	Waterford Carpets Limited
PRTR Identification Number	P0510
Licence Number	P0510-01

Waste or IPPC Classes of Activity

No.	class_name
8.5.2	The dyeing, treatment or finishing (including moth-proofing and fireproofing) of fibres or textiles (including carpet) where the capacity exceeds 1 tonne per day of fibre, yarn or textile material, not included in paragraph 8.5.1.

Address 1	Unit 201
Address 2	IDA Industrial Park
Address 3	Cork Road
Address 4	Waterford
	Cork
Country	Ireland
Coordinates of Location	-7.14475 52.2479
River Basin District	IESE
NACE Code	1393
Main Economic Activity	Manufacture of carpets and rugs
AER Returns Contact Name	Bart Zdrojowy
AER Returns Contact Email Address	bart@treford.ie
AER Returns Contact Position	Environmental Manager
AER Returns Contact Telephone Number	051 375 941
AER Returns Contact Mobile Phone Number	
AER Returns Contact Fax Number	051 379 607
Production Volume	0.0
Production Volume Units	
Number of Installations	0
Number of Operating Hours in Year	0
Number of Employees	40
User Feedback/Comments	
Web Address	

2. PRTR CLASS ACTIVITIES

Activity Number	Activity Name
50.1	General

3. SOLVENTS REGULATIONS (S.I. No. 543 of 2002)

Is it applicable?	No
Have you been granted an exemption ?	
If applicable which activity class applies (as per Schedule 2 of the regulations) ?	
Is the reduction scheme compliance route being used ?	

4. WASTE IMPORTED/ACCEPTED ONTO SITE

[Guidance on waste imported/accepted onto site](#)

Do you import/accept waste onto your site for on-site treatment (either recovery or disposal activities) ?	
--	--

4.1 RELEASES TO AIR [Link to previous years emissions data](#)

| PRTR# : P0510 | Facility Name : Waterford Carpets Limited | Filename : P0510_2012.xls | Return Year : 2012 |

27/03/2013 15:41

SECTION A : SECTOR SPECIFIC PRTR POLLUTANTS

RELEASES TO AIR		METHOD			Please enter all quantities in this section in KGs		
No. Annex II	POLLUTANT Name	M/C/E	Method Used		QUANTITY		
			Method Code	Designation or Description	Emission Point 1	T (Total) KG/Year	A (Accidental) KG/Year
					0.0	0.0	0.0

* Select a row by double-clicking on the Pollutant Name (Column B) then click the delete button

SECTION B : REMAINING PRTR POLLUTANTS

RELEASES TO AIR		METHOD			Please enter all quantities in this section in KGs								
No. Annex II	POLLUTANT Name	M/C/E	Method Used		A2-01	A2-02	A2-03	A2-04	A2-05 (not in use)	A2-06	T (Total) KG/Year	A (Accidental) KG/Year	F (Fugitive) KG/Year
			Method Code	Designation or Description	Emission Point 1	Emission Point 2	Emission Point 3	Emission Point 4	Emission Point 5	Emission Point 6			
86	Particulate matter (PM10)	E	ESTIMATE	(EN 13284-1:2002 Determination of Low Range Mass Concentration), Annual 30-min monitoring result (kg/hr) times 24hrs/day times days machine worked	69.12	72.1392	186.048	215.6544	0.0	12.672	555.6336	0.0	0.0

* Select a row by double-clicking on the Pollutant Name (Column B) then click the delete button

SECTION C : REMAINING POLLUTANT EMISSIONS (As required in your Licence)

RELEASES TO AIR		METHOD			Please enter all quantities in this section in KGs		
Pollutant No.	POLLUTANT Name	M/C/E	Method Used		QUANTITY		
			Method Code	Designation or Description	Emission Point 1	T (Total) KG/Year	A (Accidental) KG/Year
					0.0	0.0	0.0

* Select a row by double-clicking on the Pollutant Name (Column B) then click the delete button

Additional Data Requested from Landfill operators

For the purposes of the National Inventory on Greenhouse Gases, landfill operators are requested to provide summary data on landfill gas (Methane) flared or utilised on their facilities to accompany the figures for total methane generated. Operators should only report their Net methane (CH4) emission to the environment under T (total) KG/yr for Section A: Sector specific PRTR pollutants above. Please complete the table below:

Landfill: Please enter summary data on the quantities of methane flared and / or utilised	Waterford Carpets Limited			
	T (Total) kg/Year	M/C/E	Method Used Method Code Designation or Description	Facility Total Capacity m3 per hour
Total estimated methane generation (as per site model)	0.0			N/A
Methane flared	0.0			0.0 (Total Flaring Capacity)
Methane utilised in engine/s	0.0			0.0 (Total Utilising Capacity)
Net methane emission (as reported in Section A above)	0.0			N/A

4.3 RELEASES TO WASTEWATER OR SEWER

[Link to previous years emissions data](#)

| PRTR# : P0510 | Facility Name : Waterford Carpets Limited | Filename : P0510_2012.xls | Return Year

27/03/2013 15:51

SECTION A : PRTR POLLUTANTS

OFFSITE TRANSFER OF POLLUTANTS DESTINED FOR WASTE-WATER TREATMENT OR SEWER					Please enter all quantities in this section in KGs			
POLLUTANT		METHOD			QUANTITY			
No. Annex II	Name	M/C/E	Method Code	Designation or Description	Emission Point 1	T (Total) KG/Year	A (Accidental) KG/Year	F (Fugitive) KG/Year
					0.0	0.0	0.0	0.0

* Select a row by double-clicking on the Pollutant Name (Column B) then click the delete button

SECTION B : REMAINING POLLUTANT EMISSIONS (as required in your Licence)

OFFSITE TRANSFER OF POLLUTANTS DESTINED FOR WASTE-WATER TREATMENT OR SEWER					Please enter all quantities in this section in KGs			
POLLUTANT		METHOD			QUANTITY			
Pollutant No.	Name	M/C/E	Method Code	Designation or Description	Emission Point 1	T (Total) KG/Year	A (Accidental) KG/Year	F (Fugitive) KG/Year
				Sample taken directly from the compressor outlet. Lab analysis result (mg/L) x 0.4L/hr flow x 45 weeks x 120 hrs (constant operation) div 10 ⁶ (mg to kg)				
303	BOD	E	ESTIMATE	As above	0.0216	0.0216	0.0	0.0
306	COD	E	ESTIMATE	As above	0.17712	0.17712	0.0	0.0
240	Suspended Solids	E	ESTIMATE	As above	0.00864	0.00864	0.0	0.0

* Select a row by double-clicking on the Pollutant Name (Column B) then click the delete button

5. ONSITE TREATMENT & OFFSITE TRANSFERS OF WASTE

| PRTR# : P0510 | Facility Name : Waterford Carpets Limited | Filename : P0510_2012.xls | Return Year : 2012 |

27/03/2013 15:55

Please enter all quantities on this sheet in Tonnes

5

Transfer Destination	European Waste Code	Hazardous	Quantity (Tonnes per Year)	Description of Waste	Waste Treatment Operation	Method Used		Location of Treatment	Haz Waste : Name and Licence/Permit No of Next Destination Facility Non Haz Waste: Name and Licence/Permit No of Recover/Disposer	Haz Waste : Address of Next Destination Facility Non Haz Waste: Address of Recover/Disposer	Name and License / Permit No. and Address of Final Recoverer / Disposer (HAZARDOUS WASTE ONLY)	Actual Address of Final Destination i.e. Final Recovery / Disposal Site (HAZARDOUS WASTE ONLY)
						M/C/E	Method Used					
To Other Countries	08 04 09	Yes	0.0	waste adhesives and sealants containing organic solvents or other dangerous substances	R3	M	Volume Calculation	Abroad	INDAVER IRELAND LIMITED,IRE/AG040/08	Unit 11 South Ring Bus. Pk Kinsale Rd.,,Cork,,Ireland Unit 14a Six Cross Roads Business Park Carrignard,,Waterford City,,Ireland	Nehlsen GbH & Co. KG,D33300040,Louis-Krages-Louis-Krages-Strasse,,Bremen,1028237,Germany	Strasse,,Bremen,1028237,Germany
Within the Country	15 01 02	No	0.0	plastic packaging	R3	M	Weighed	Offsite in Ireland	Greenstar Limited,W0177-03 / WCP-KK-11-54-02	Carrignard,,Waterford City,,Ireland Tomgarrow Ballycarney,,Enniscorthy Co. Wexford,,Ireland		
Within the Country	15 01 04	No	2.58	metallic packaging	R4	M	Weighed	Offsite in Ireland	Molloy Metal Recycling,WP/08/14(b)			
To Other Countries	16 03 05	Yes	0.0	organic wastes containing dangerous substances	R12	M	Volume Calculation	Abroad	INDAVER IRELAND LIMITED,IRE/AG040/08	Unit 11 South Ring Bus. Pk Kinsale Rd.,,Cork,,Ireland Unit 14a Six Cross Roads Business Park Carrignard,,Waterford City,,Ireland	Afvalstoffen Terminal Moerdijk B.V.,,821780,Vlasweg,12,Moe Vlasweg,12,Moerdijk,4782 rdijk,4782 PW,Netherlands	PW,Netherlands
Within the Country	20 01 01	No	25.61	paper and cardboard	R3	M	Weighed	Offsite in Ireland	Greenstar Limited,W0177-03 / WCP-KK-11-54-02	Carrignard,,Waterford City,,Ireland Unit 14a Six Cross Roads Business Park Carrignard,,Waterford City,,Ireland		
Within the Country	20 01 38	No	0.0	wood other than that mentioned in 20 01 37	R3	M	Weighed	Offsite in Ireland	Greenstar Limited,W0177-03 / WCP-KK-11-54-02	Carrignard,,Waterford City,,Ireland Unit 14a Six Cross Roads Business Park Carrignard,,Waterford City,,Ireland		
Within the Country	20 03 01	No	101.05	mixed municipal waste	D1	M	Weighed	Offsite in Ireland	Greenstar Limited,W0177-03 / WCP-KK-11-54-02	Carrignard,,Waterford City,,Ireland		

* Select a row by double-clicking the Description of Waste then click the delete button