



**Licensing Notice - Unsolicited Correspondence - 1 for Knockaconny Licence (D0463-01)**

**Licence:** Knockaconny (D0463-01)

**Status Reason:** Closed

**Issued On:** 29/05/2013

**Action Type:** Licensing Notice

**Status History Action:** Unsolicited Correspondence

Response to email dated 17th April 2013 from Loretta Joyce (Inspector EPA) following site visit to Knockaconny WWTP, also in response to Regulation 16 compliance requirements. - Response documents including cover letter attached.

*For inspection purposes only.  
Consent of copyright owner required for any other use.*



# Comhairle Contae Mhuineacháin Monaghan County Council

Acmhainní Daonna  
Human Resources  
047 30586

Airgeadas  
Finance  
047 30589

Na Bóithre  
Roads  
047 30597

Clár na dTogthóirí  
Register of Electors  
047 30547

Comhshaol  
Environment  
047 30593

Deontais Ardoideachais  
Higher Education Grants  
047 30550

Na hEalaíona  
Arts  
047 71114

Iasachtaí / Deontais Tithíochta  
Housing Loans/Grants  
047 30527

Leabharlann an Chontae  
County Library  
047 74700

Mótarcháin  
Motor Tax  
047 81175

Músaem an Chontae  
County Museum  
047 82928

Pleanáil  
Planning  
047 30532

Pobal & Fiontar  
Community & Enterprise  
047 73719

Rialú Dóiteáin/Foirgnimh  
Fire/Building Control  
047 30521

Soirbhísl Uisce  
Water Services  
047 30504

Loretta Joyce,  
Inspector,  
Environmental Licensing Programme,  
Office of Climate, Licensing and Resource Use,  
Environmental Protection Agency,  
McCumiskey House, Richview,  
Clonskeagh House,  
Dublin 14.

15<sup>th</sup> May 2013

**Re: D0463-01** Response to Notice in accordance with Regulation 18(3) (b) of the Waste Water Discharge (Authorisation) Regulations 2007 and email dated 17<sup>th</sup> April 2013 following EPA visit to Knockaconny Waste Water Treatment Plant (WWTP).

Dear Loretta,

I refer to the above correspondence received in relation to the Knockaconny agglomeration.

Enclosed is the response to the email dated 17<sup>th</sup> April 2013 as follows:

- (1) Confirm current and projected P.E.:**  
The current P.E. of the Knockaconny WWTP is 420 P.E. As discussed at our site visit in April, the projected P.E. of the WWTP will be forwarded in due course as Monaghan County Council are awaiting information due, in a Section 16 Discharge Licence application from a development connected to the Knockaconny WWTP.
- (2) Confirm normal waste water discharged/day:**  
Normal waste water discharged from the Knockaconny WWTP is approximately 75m<sup>3</sup>/day.
- (3) Corrected Drawing 3 showing corrected primary discharge coordinates and primary discharge sampling point coordinates:**  
The correct primary discharge coordinates are:  
SW1(P) 268917E, 335781N.



# Comhairle Contae Mhuineacháin Monaghan County Council

Acmhainní Daonna  
Human Resources  
047 30586

Airgeadas  
Finance  
047 30589

Na Bóithre  
Roads  
047 30597

Clár na dTogthóirí  
Register of Electors  
047 30547

Comhshaol  
Environment  
047 30593

Deontais Ardoideachais  
Higher Education Grants  
047 30550

Na hEalaíona  
Arts  
047 71114

Iasachtaí /Deontais Tithíochta  
Housing Loans/Grants  
047 30527

Leabharlann an Chontae  
County Library  
047 74700

Mótarcháin  
Motor Tax  
047 81175

Músaem an Chontae  
County Museum  
047 82928

Pleanáil  
Planning  
047 30532

Pobal & Fiontar  
Community & Enterprise  
047 73719

Rialú Dóiteáin/Foirgnimh  
Fire/Building Control  
047 30521

Seirbhís Uisce  
Water Services  
047 30504

The correct effluent sampling coordinates are:  
SW1(P)s 268924E, 335752N.

Drawings numbers 3, 4, 6 & 7 have been revised – Revision 'A' on each drawing to detail these corrections. Also, clarification regarding a Storm Water Overflow (SWO) from the Knockaconny WWTP is as follows, there is no storm tank at the WWTP, there is a storm discharge pipe from the inlet works that discharges to the Blackwater River via the Primary discharge pipe when excessive inflows occur into the plant. This amendment has been made to drawings 3, 4, 6 & 7, the primary discharge point (Sw1(P)) now includes the Storm Water Overflow label and the layout and schematic drawings have also been revised.

(Revised drawings attached).

- (4) **Corrected Drawing 4 showing corrected ambient monitoring points with coordinates:**  
Drawing 4 has been revised with correct ambient monitoring locations.  
(Revised drawings attached).

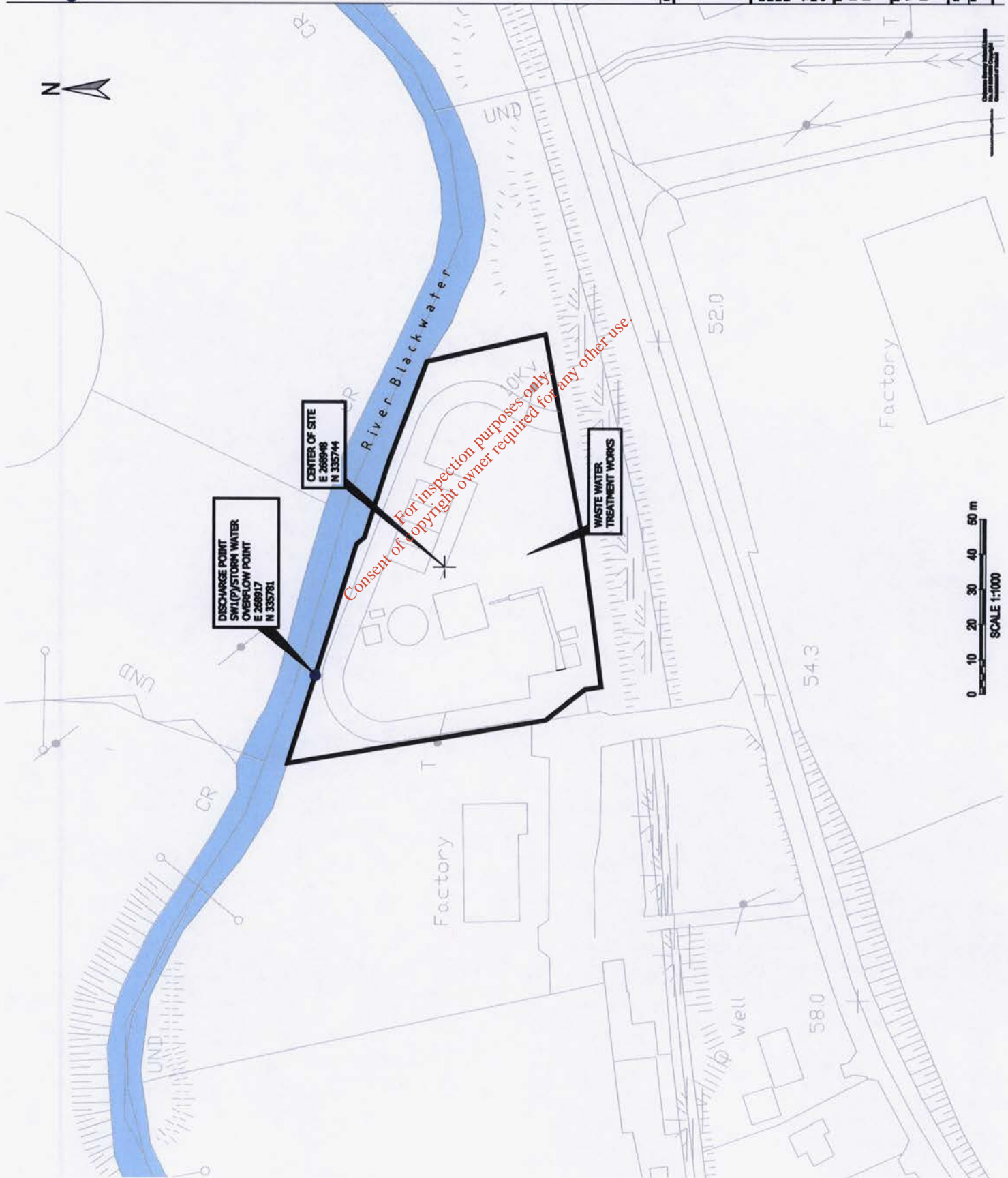
- (5) **2012/2013 ambient monitoring results:**  
2012 & 2013 ambient monitoring results have been included with this response.

Regards,

S. Mallon,  
Assistant Engineer,  
Water Services Section,  
Monaghan County Council.  
047 30574

**LEGEND:**

● DISCHARGE POINT/STORM WATER OVERFLOW POINT



Rev. A: Primary discharge Co-Ords corrected/Storm water discharge point added 15/05/2013 SM M.C.C.

REV	DESCRIPTION	BY	DATE



**Monaghan County Council**  
Comhairle Contae Muineacháin



PROJECT OFFICE  
WATERWAYS OFFICE  
NUTRITION AVE  
MORTONSTOWN, DUBLIN 14  
TEL: +353 (0) 1291 4600  
FAX: +353 (0) 1291 9021  
e-mail: info@wyg.com

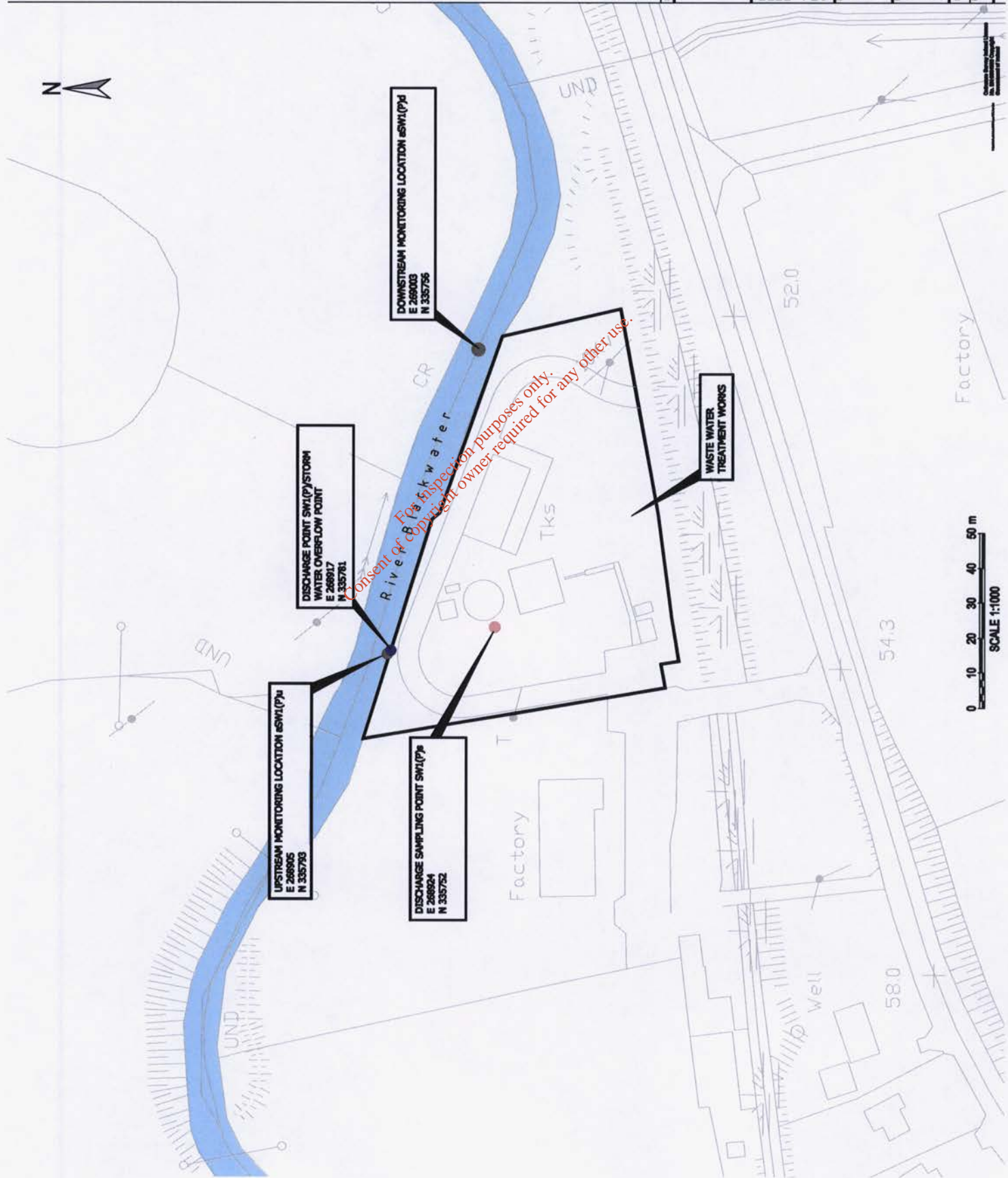
**KNOCKACONNY**  
DISCHARGE LICENCE APPLICATION

WASTE WATER TREATMENT PLANT  
LOCATION OF PRIMARY DISCHARGE POINT

Scale @	A2	Drawn	Date	Checked	Date	Approved	Date	
AS SHOWN	HS	15.06.07	CS	15.06.07	TK	15.06	15.06	
Project No.	C007400	Client	WYG	Drawn by	TK	Checked by	TK	
DRAWING 3 A							© WYG Group	

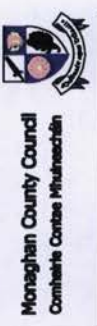
**LEGEND:**

- SAMPLING POINT
- MONITORING LOCATION
- DISCHARGE POINT



Rev. A: Upstream Co-Ords amended,  
 Discharge sampling point moved and  
 corrected, Storm Water overflow dischar  
 point added. S.M. M.C.C. 8/2013

REV	DESCRIPTION	BY	DATE

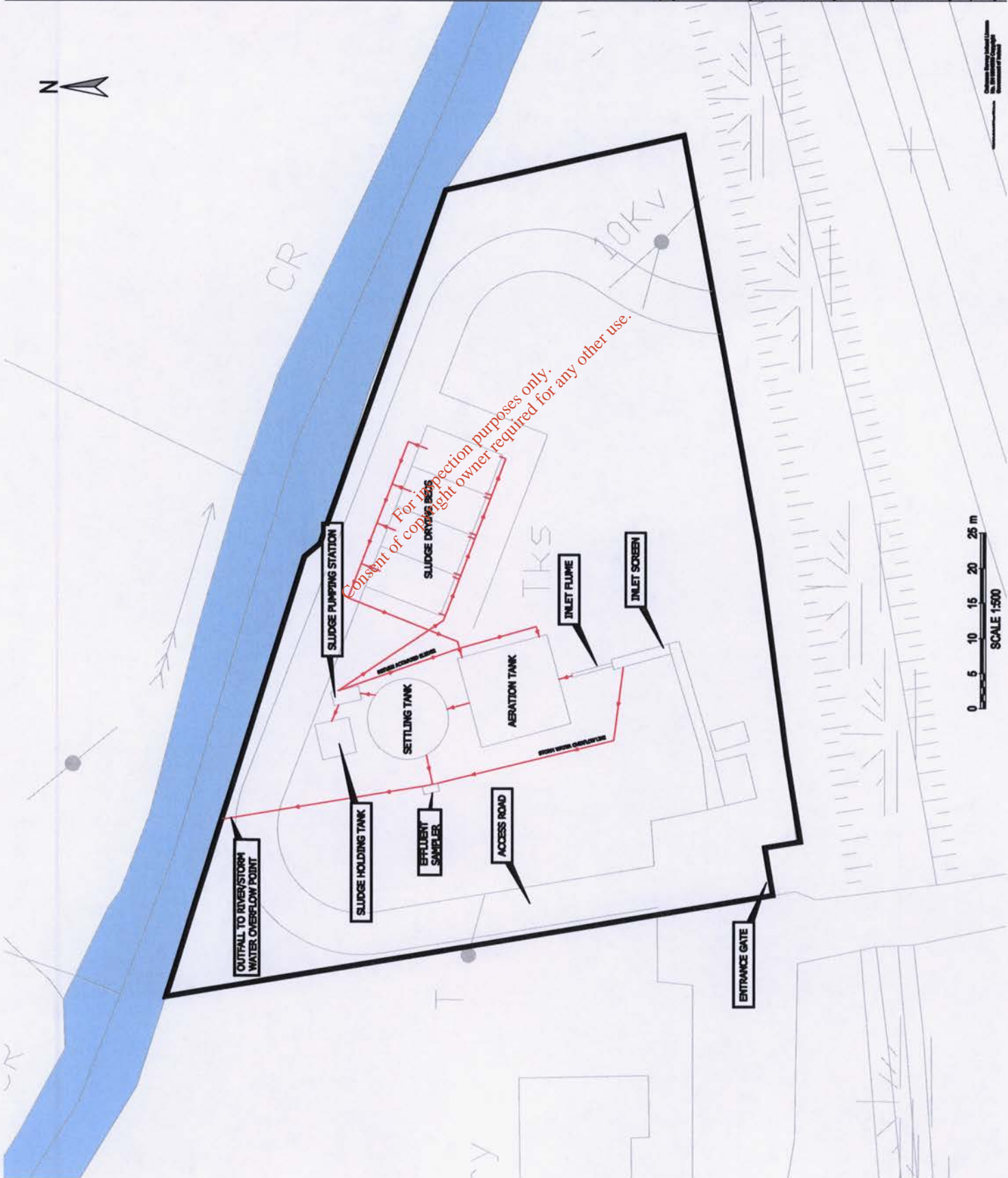


**Moneaghan County Council**  
 Combhaine Contae Mhúineacháin

**WYG**

PROJECT: KNOCKACONNY DISCHARGE LICENCE APPLICATION	
DRAWING TITLE: WASTE WATER TREATMENT PLANT MONITORING AND SAMPLING LOCATIONS ASSOCIATED WITH DISCHARGE POINT	
Scale: AS Date: 15.06.09 Project No.: C007400	Drawn: [ ] Checked: [ ] Approved: [ ] Date: 15.06.09 Type: DRAWING 4 No.: A





CR

Rev. A: Storm water overflow line added, pipelines amended throughout, sampler added. SM, M.C.C. 18/2013

REV	DESCRIPTION	BY	DATE

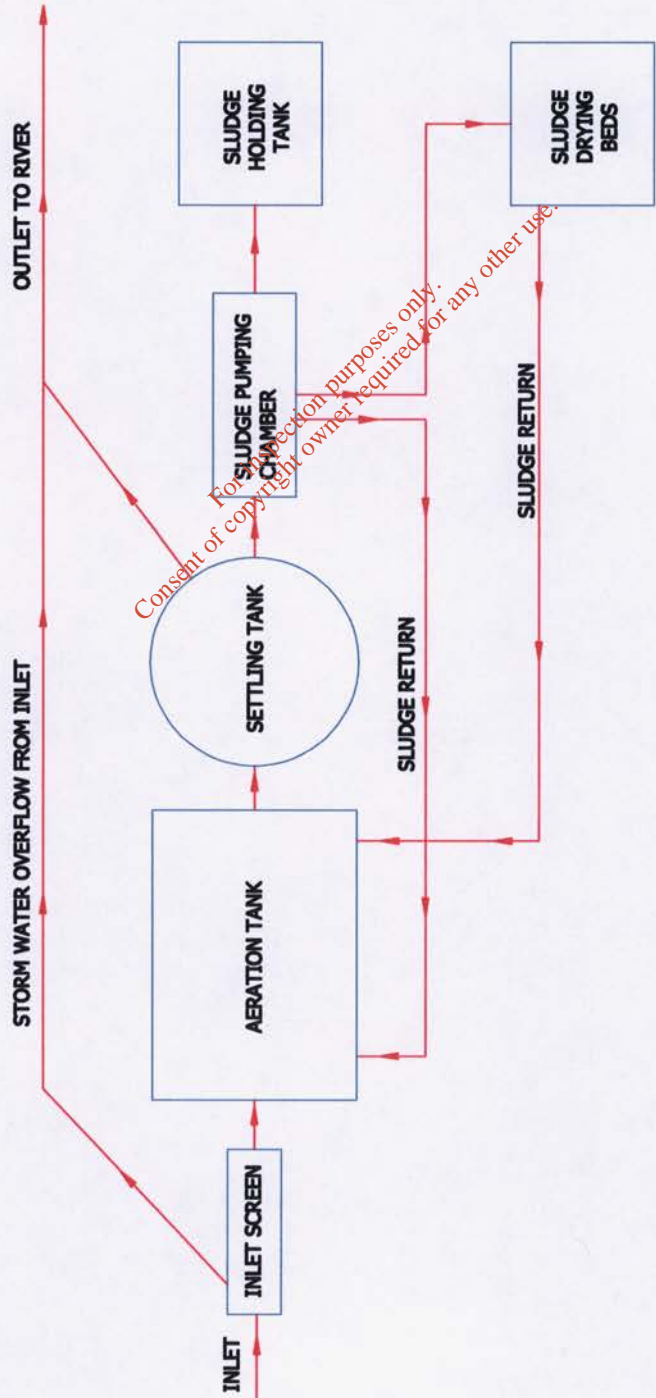
**Monaghan County Council**  
 Comhairle Contae Muineacháin



PROJECT NO: C007400  
 DRAWING NO: DRAWING 6  
 SCALE: 1:500

Drawn By	Checked By	Date	Approved By
AS/CHW	IS	15.06.09	TC
Project No.	Office	Type	Drawing No.
C007400			DRAWING 6
			A

0 5 10 15 20 25 m  
 SCALE 1:500



Rev. A: Schematic amended to include storm water overflow line and sludge returns. SM M.C.C. 15/2013

REV	DESCRIPTION	BY	CHK/APP	DATE
-----	-------------	----	---------	------



Monaghan County Council  
 Combaisle Contae Muineacháin



PROJECT OFFICE  
 WATERSIDE OFFICE PARK  
 WATERSIDE AVENUE  
 RATHFRIBERT, DUBLIN 14  
 TEL: +353 (0) 1291 4000  
 FAX: +353 (0) 1291 5021  
 e-mail: info@wyg.com

Project: KNOCKACONNY  
 DISCHARGE LICENCE APPLICATION

Drawing Title: WASTE WATER TREATMENT PLANT  
 SCHEMATIC FLOW DIAGRAM OF TREATMENT PLANT

Scale	AS SHOWN	AS SHOWN	AS SHOWN	AS SHOWN	AS SHOWN	AS SHOWN	AS SHOWN
Sheet #	AS	Drawn	Checked	Date	Appr'd	Date	
Project No.	C007400	Office	Type	Drawing No.	DRAWING 7	Revised	
						Checked	15.06.09
						Appr'd	15.06.09
						By	TK
						Scale	1:1
						Author	

© WYG Group

Knockaconny upstream monitoring results:													
Location	Daily Flow M3/day	Upstream	Date of Sampling	Sample Type (C or G)	Temp.	PH	cBOD mg/l	COD mg/l	Suspended Solids mg/l	Ortho Phosphate (as P) mg/l	Ammonia (as N)	Total Nitrogen mg/l (as N)	Total Phosphorus mg/l (as N)
Knockaconny		Upstream	10/09/2012	G			<2.0			0.025	0.077	1.53	0.094
Knockaconny		Upstream	16/07/2012	G			1.70			1.615	0.060		
Knockaconny		Upstream	28/11/2012	G			1.80			0.027	0.075		
Knockaconny		Upstream	30/11/2012	G			1.50			0.014	0.079		
Knockaconny		Upstream	13/12/2012	G			1.30			<0.006	0.060		
Knockaconny		Upstream	18/12/2012	G			1.90						
Knockaconny downstream monitoring results:													
Location	Daily Flow M3/day	Downstream	Date of Sampling	Sample Type (C or G)	Temp.	PH	cBOD mg/l	COD mg/l	Suspended Solids mg/l	Ortho Phosphate (as P) mg/l	Ammonia (as N)	Total Nitrogen mg/l (as N)	Total Phosphorus mg/l (as N)
Knockaconny		Downstream	10/09/2012	G			<2.0			0.052	0.349	2.11	0.109
Knockaconny		Downstream	16/07/2012	G			1.40			0.038	0.062		
Knockaconny		Downstream	28/11/2012	G			1.80			0.025	0.114		
Knockaconny		Downstream	30/11/2012	G			1.60			0.120	0.085		
Knockaconny		Downstream	13/12/2012	G			1.70			<0.006	0.016		
Knockaconny		Downstream	18/12/2012	G			3.00						

Consent of copyright owner required for any other use.  
For inspection purposes only.



Knockaconny upstream monitoring results:													
Location	Daily Flow M3/day	Upstream	Date of Sampling	Sample Type (G or G)	Temp	PH	cBOD mg/l	BOD mg/l	Suspended Solids mg/l	Ortho Phosphate (as P) mg/l	Ammonia (as N)	Total Nitrogen mg/l (as N)	Total Phosphorus mg/l (as P)
Knockaconny		Upstream	31/01/2013	G			1.80			0.043	0.119		
Knockaconny		Upstream	01/06/2013	G			<1.0			0.017	0.055		
Knockaconny		Upstream		G									
Knockaconny		Upstream		G									
Knockaconny		Upstream		G									
Knockaconny		Upstream		G									
Knockaconny downstream monitoring results:													
Location	Daily Flow M3/day	Downstream	Date of Sampling	Sample Type (G or G)	Temp	PH	cBOD mg/l	BOD mg/l	Suspended Solids mg/l	Ortho Phosphate (as P) mg/l	Ammonia (as N)	Total Nitrogen mg/l (as N)	Total Phosphorus mg/l (as P)
Knockaconny		Downstream	31/01/2013	G			4.00			0.053	<0.01		
Knockaconny		Downstream	01/06/2013	G			<1.0			0.042	0.057		
Knockaconny		Downstream		G									
Knockaconny		Downstream		G									
Knockaconny		Downstream		G									
Knockaconny		Downstream		G									

Consent of copyright owner required for any other use.  
For inspection purposes only.