



*Site: Ballymount Road, Walkinstown, Dublin 12.*

*Waste Licence Number W0263-01*

*Annual Environmental Report*

*01<sup>th</sup> January 2012 – 31<sup>st</sup> December 2012*

---

**Table of Contents**

Table of Contents ..... 2

1.0 Introduction ..... 4

    1.1 Company details ..... 4

    1.2 Management Structure ..... 5

    1.3 Financial Provision ..... 5

    1.4 Environmental Policy ..... 5

    1.5 Activities ..... 6

    1.6 Waste Activities carried out at the Facility ..... 6

    1.7 Water Usage: ..... 7

2.0 Summary Information ..... 7

    2.1 Waste Received ..... 7

    2.2 Waste Transferred Off-Site for Disposal or Recovery ..... 8

    2.3 Summary report on emissions and interpretation of environmental monitoring ..... 8

        2.3.1 *Surface Water* ..... 8

        2.3.2 *Dust Emissions* ..... 8

        2.3.3 *Noise Emissions* ..... 10

        2.3.4 *Bund, pipe and underground storage tanks integrity* ..... 11

        2.3.5 *Summary of resource and energy consumption* ..... 11

        2.3.6 *Water* ..... 11

    2.4 Site infrastructure ..... 11

        2.4.1 *In-place* ..... 11

    2.5 Progress report on proposals developed to minimise water demand ..... 12

    2.6 PRTR Emission ..... 12

3.0 Environmental objectives and targets – 2013. .... 13

    3.1 Summary of reported incidents and complaints ..... 15

        3.1.1 *Reported Incidents Summary* ..... 15

        3.1.2 *Complaints:* ..... 15

    3.2 Review of nuisance controls ..... 15

        3.2.1 *Odour* ..... 15

        3.2.2 *Noise* ..... 15

        3.2.3 *Dust* ..... 15

        3.2.4 *Vermin* ..... 15

        3.2.5 *Flies* ..... 16

---

3.2.6 <i>Birds</i> .....	16
3.2.7 <i>Litter</i> .....	16
4.0 Development of Procedures on Site.....	16
5.0 Pollution Emission Register.....	17
6.0 Report on Programme for Public Information .....	17
Appendix A.....	18
Appendix B .....	19
Appendix C .....	20
Appendix D.....	21

## **1.0 Introduction**

Panda were granted the EPA Waste Licence W0263-01 on the 26<sup>th</sup> January 2011. This replaces the Waste Permit WPR 021/2 issued by South Dublin County Council. Under this licence, Panda will be able to process initially 150,000 tonnes per annum. Appendix A illustrates the current site layout.

### 1.1 Company details

Licence No:	W0263-01
Name:	Irish Packaging Recycling Ltd
Address:	Ballymount Road, Walkinstown, Dublin 12.
Telephone Number:	01 4602011
Fax Number:	01 4602210
Website:	<a href="http://www.panda.ie">www.panda.ie</a>

### 1.2 Management Structure

There are 30 employees either working directly or indirectly at the facility. Appendix B illustrates the organisational structure of the facility.

### 1.3 Financial Provision

A statement from our accountants is provided in Appendix C. At the present time the annual turnover and company assets are sufficient to offset environmental liabilities incurred during the course of operations and in the event that the company is closed.

### 1.4 Environmental Policy

In carrying out our function, IPR/Panda acknowledge that our activities impact upon the environment both through routine internal operations and the actions of our staff.

It is Panda's policy to protect the environment during all activities, both on and off-site.

This is achieved by:

- Strategic preparation and implementation of operating procedures (including an emergency response procedure).
- Utilizing BAT (Best Available Technology).
- Actively promoting environmental awareness amongst staff and clients through appropriate training and communication programs.
- Reduce energy use through effective education and awareness and the installation of energy efficient technology where appropriate.
- Implementing a policy of continuous improvement, by means of targeted objectives. All objectives and targets are monitored and up-dated accordingly.

IPR/Panda are committed to complying with all relevant environmental regulations and aim to supply a safe competitive and sustainable service with specific regards to the surrounding environment.

---

### 1.5 Activities

Under the waste licence W0263-01, IPR conducts the following activities:

***Licensed Waste Recovery Activities, in accordance with the Fourth Schedule of the Waste Management Acts, 1996 to 2010***

**Class 2.**

Recycling or reclamation of organic substances which are not used as solvents (including composting and other biological processes) (P).

**Class 3.**

Recycling or reclamation of metals and metal compounds.

**Class 4.**

Recycling or reclamation of other inorganic materials.

**Class 13.**

Storage of waste intended for submission to any activity referred to in a preceding paragraph of this Schedule, other than temporary storage, pending collection, on the premises where such waste is produced.

IPR accept material from commercial and industrial sectors throughout Ireland. The normal facility operating hours are 6am-5pm (Monday-Friday) & 6am-2pm (Saturdays). The facility is licensed to accept non-hazardous wastes only.

### 1.6 Waste Activities carried out at the Facility

Material accepted and dispatched at the facility is weighed using Genesys weighbridge software. The facility is used as a baling station. The facility accepts predominantly source segregated paper, cardboard, plastic and hangers. No hazardous waste, putrescible waste or liquid wastes are accepted at the facility.

The material is initially sorted in the facility using skid steers and teleporters, then loaded into one of three balers for baling. The resultant bales are stored for onward movement.

There is a dual weighbridge for incoming and outgoing material.

**1.7 Water Usage:**

Water for dust suppression and fire fighting is taken from a holding tank located on a neighbouring paper premises. Water to the office and amenities is taken from municipal supply and is metered by the council.

Water usage in the facility consists of:

- Dust Suppression.
- Fire fighting

**2.0 Summary Information**

**2.1 Waste Received**

The waste received at the facility from the 1<sup>st</sup> January 2012 to the 31<sup>st</sup> December 2012 was 127,764.56 tonnes.

**Table 1.** Waste received in 2012

<b>EWC Code</b>	<b>Waste Description</b>	<b>Tonnage</b>
20 01 01	Paper and Cardboard	27,500.37
20 01 39	Plastic	91.17
20 03 01	Residue	583.77
15 01 01	Paper and Cardboard	89,654.98
15 01 02	Plastic Packaging	7,025.63
15 01 03	Wood	1,838.93
15 01 04	Steel	85.04
15 01 06	Mixed Packaging	113.91
16 01 03	Used Tires	382.02
19 12 01	Paper and Cardboard	452.72
12 01 05	Clothing Waste	36.02

## 2.2 Waste Transferred Off-Site for Disposal or Recovery

See Appendix D (PRTR) for the breakdown of the different destinations used for the waste removed off site by EWC Code.

**Table 2:** Outgoing destination and recovery rate.

Destination	Tonnage	%
Disposal	0	0
Recovery	126,483.27	100

## 2.3 Summary report on emissions and interpretation of environmental monitoring

Under Schedule C of the licence W0263-01, IPR are required to monitor storm water emissions, noise and ambient air monitoring (Dust). The following sub-headings detail the results from independent laboratories of the different parameters and the emission limit values ELV's set by the EPA and any complaints and incident that may have occurred during the year.

### 2.3.1 Surface Water

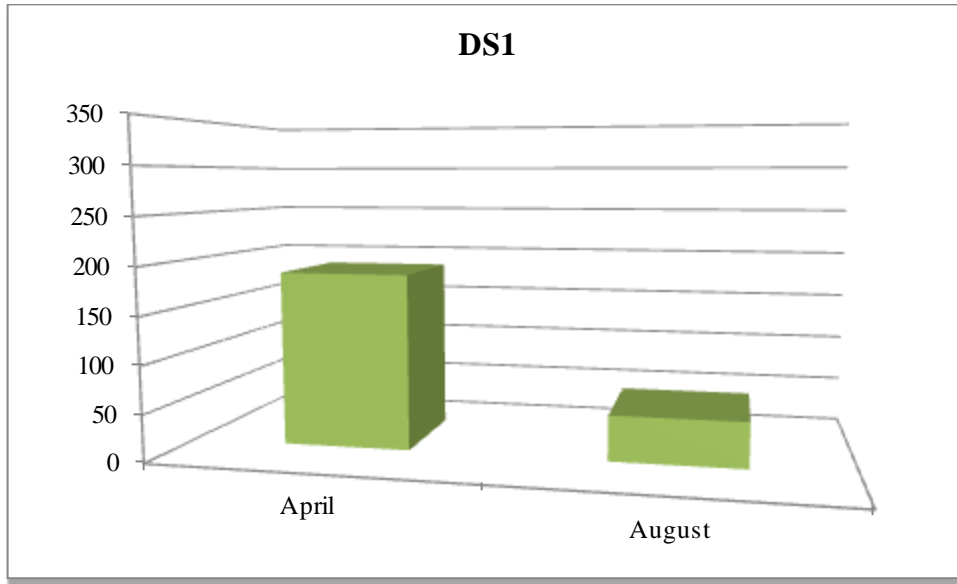
Storm water passes through a silt trap prior to being discharged to the stream to the South of the facility.

### 2.3.2 Dust Emissions

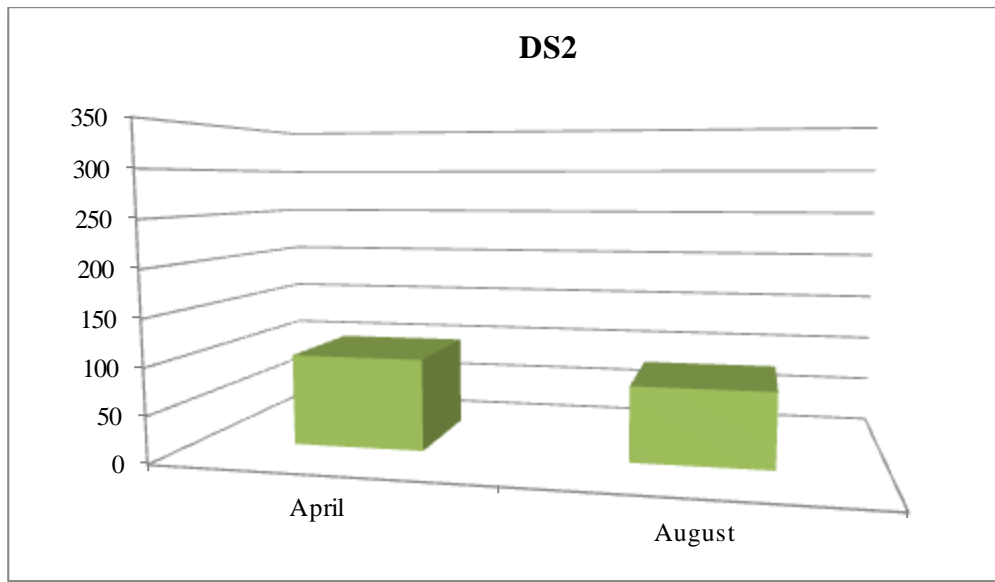
As per schedule B5 for dust deposition limits, there are currently three sampling locations (AD1, AD2 and AD3). Monitoring is required annually on site. Figs 1-3 illustrate dust recordings for 2012.



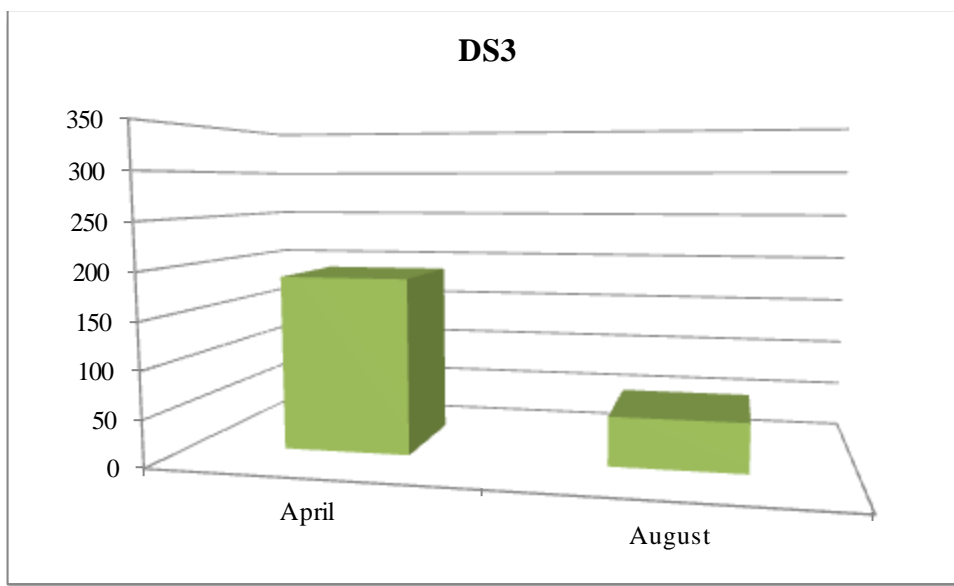
**Fig. 1:** Dust emission results for DS1 (AD1) in  $\text{mg m}^{-2} \text{d}^{-1}$



**Fig. 2:** Dust emission results for DS2 (AD2) in  $\text{mg m}^{-2} \text{d}^{-1}$



**Fig. 3:** Dust emission results for DS3 (AD3) in  $\text{mg m}^{-2} \text{d}^{-1}$



As per Schedule B.5, the dust deposition limit for the site is  $350 \text{ mg m}^{-2} \text{d}^{-1}$ . AD1, AD2 and AD3 are well within licenced ELV's.

### 2.3.3 Noise Emissions

Noise emissions are monitored according to Schedule B.4 and the emission limit values (ELV) set out in Schedule C.5 of the licence. An independent competent consultant was commissioned to conduct the noise sampling for the facility. Table 3 details results of noise monitoring conducted in 2012.

**Table 3:** Noise Emissions 2012

Location	Date	Time	Leq	L10	L90	Comments
AN1	21 <sup>st</sup> Dec '12	11.45	54.1	57.2	52.8	Road traffic was audible at 52/53 dBA
AN2	21 <sup>st</sup> Dec '12	12.15	53.7	54.5	52.1	Mainly noise from bobcat activity and trucks entering and leaving the site

NB The background noise from road traffic from surrounding road network was in the region of 51 dBA

#### 2.3.4 Bund, pipe and underground storage tanks integrity

The integrity and water tightness of all underground pipes, all tanks, bunding structures and containers and their resistance to penetration by water and other materials is required to be carried out every three years and thereafter and reported to the Agency. A bund, pipeline and UST integrity testing is scheduled for Q3 of 2013.

#### 2.3.5 Summary of resource and energy consumption

**Table 4:** Summary of Energy Consumption from 1<sup>st</sup> January 2012 to December 2012.

Resource	Quantity
Diesel	96,867.20 litres
Hydraulic Oil	6,524 litres
Electricity	687.42 MWhr

#### 2.3.6. Water

Water is obtained from a shared holding tank and water for the office and amenities is obtained from the municipal water supply.

### 2.4 Site infrastructure

The following are details on infrastructure in the facility.

#### 2.4.1 In-place

The current site infrastructure is outlined below (List 1). List 2 details the waste processing equipment used on site.

#### **List 1:** Current site infrastructure

1. Offices

2. Dual Weighbridge.
3. One x Waste processing building
4. One sprinkling system
5. Canteen & toilets.
6. Fuel Depot
10. Fencing around the site

**List 2: Waste processing equipment**

- 1 x Skid Steer
- 7 x Forklifts
- 1 x Road sweeper
- 2 x Teleporters

There is sufficient back up within the group if the skid steers, forklifts or the teleporter's break down.

**2.5 Progress report on proposals developed to minimise water demand**

Water usage is minimised on site due to the nature of the materials handled. Therefore there is no requirement to reduce water usage.

**2.6 PRTR Emission.**

IPR's PRTR emission return is provided in Appendix D.

**3.0 Environmental objectives and targets – 2013.**

No	Objective & Target	Method of Achievement	Responsibility	Timescale	Complete in 2012
1	<b>Assess the Effectiveness of Nuisance Control Procedures</b>	Continually review and assess all nuisance control procedures to ensure minimal impact on surrounding area	Facility Manager	Ongoing	Continuous
		Ensure yards are cleaned at the end of each working day	Operatives	Ongoing	Continuous
2	<b>Prevent Water Pollution from Run-Off</b>	Complete a Firewater Risk Assessment	Facility Manager/ Env Dept	September 2013	Not Complete
		Ensure all gullies are maintained and regularly cleaned	Facility Manager/ Operatives	Ongoing	Continuous
		Install Class I full retention separator	Facility Manager	Feb 2013	Complete
		A bund, pipeline and UST integrity test is to be completed.	Facility Manager	Aug 2103	Not Complete
3	<b>Assess &amp; Review Resource &amp; Energy Consumption at the site</b>	Carry out an energy audit on the site	Facility Manager	Jan' 2012	Complete
4	<b>Maintain and Develop the Environmental Management System</b>	Maintain EMS Documentation on site	Facility Manager/ Env Dept	Continuous	Continuous
		Up date procedures to reflect operational and control changes	Facility Manager/ Env Dept	Continuous	Continuous

5	<b>Assess Waste Acceptance Procedures so as to minimise volume of erratics</b>	Communicate with customers about the items that are not acceptable in the in-coming wastes	Facility Manager/ Sales Reps	Continuous	Continuous
6	<b>Environmental Monitoring</b>	Implement the Environmental Monitoring Programme specified in the Waste Licence	Facility Manager	Continuous	Continuous
		Investigate any accidents of emission limit values	Facility Manager	Continuous	Continuous
7	<b>Ensure and implement a training programme</b>	Identify staff training requirements and provide relevant training	Facility Manager/ Env Dept	Continuous	Continuous
8	<b>To control any emergencies that may arise at the facility</b>	Review and Update the Emergency Response Procedure	Facility Manager/ Env Dept	Jan 2013	Complete
9	<b>Prepare a Standard Operating Procedures Manual</b>	Update the SOP manual relevant to site operations	Facility Manager/ Env Dept	Continuous	Continuous
10	<b>Ensure lighting in waste handling buildings provide sufficient lighting so as to assess incoming waste</b>	Clean all light fittings in waste handling buildings	Environmental Manager/ Yard Supervisor	July 2012	Complete
13	<b>Office Recycling</b>	Implement office recycling	Office Manager/ Environmental Department	Continuous	Continuous
		Continuation of training regarding office recycling	Office Manager/ Environmental Department	Continuous	Continuous

### 3.1 Summary of reported incidents and complaints

#### *3.1.1 Reported Incidents Summary*

There were no incidents in 2012.

#### *3.1.2 Complaints:*

No incidents occurred during this licence in 2012.

### 3.2 Review of nuisance controls

#### *3.2.1 Odour*

There is minimal risk of odour nuisance due to the nature of the waste accepted at the facility. However, IPR's in house roadsweeper cleans the concreted yard routinely throughout the day.

#### *3.2.2 Noise*

The monitoring results showed that noise is not a nuisance, as only bobcats, teleporters and forklifts are operational on site.

#### *3.2.3 Dust*

A dust suppression system is installed in the shed and on the external (South-western side) of the building. The roadsweeper is frequently used on all concreted yards. Fire hoses are also available to spray water on concreted yards as required.

#### *3.2.4 Vermin*

A file on vermin control is maintained in the office. A sub-contractor is used to control any vermin on site.

### *3.2.5 Flies*

Good housekeeping practices are used to prevent fly infestations. The yard is kept clean using a road sweeper and all waste for disposal is removed from the facility within 48 hours, or 72 hours in the case of a bank holiday weekends.

### *3.2.6 Birds*

In order to avoid having birds as a nuisance, litter control is practised at all times, this includes regular litter patrols. Birds are not attracted, due to the nature of the material handled on site.

### *3.2.7 Litter*

A designated member of staff carries out litter inspections of the facility regularly and gathers any litter deposited. The yard is kept clean using a road sweeper

## **4.0 Development of Procedures on Site**

The Environmental Management System has been developed and includes the following Standard Operating Procedure;

- Corrective Action;
- Daily Site Inspections;
- Nuisance Management;
- Emergency Response;
- Unacceptable Waste;
- Communications Programme;
- Storage of Fuels and Oils;
- Training and Awareness;
- Environmental Complaints;



A Daily Site Inspection Sheet has been developed to record any potential nuisance on or points to note including a map of the facility for reference as to the location of the nuisance.

### **5.0 Pollution Emission Register**

After consulting the PERL list IPR are not using any substance that is listed at present.

### **6.0 Report on Programme for Public Information**

IPR have a shared website with their sister company Panda. The website was recently re-developed; one of the features is an Environmental page where the following can be downloaded,

- Facility licences (W0140-03, W0261-01, **W0263-01**)
- Multi-regional Waste collection permit (WCP-DC-09-1188-01),
- Environmental Policy,

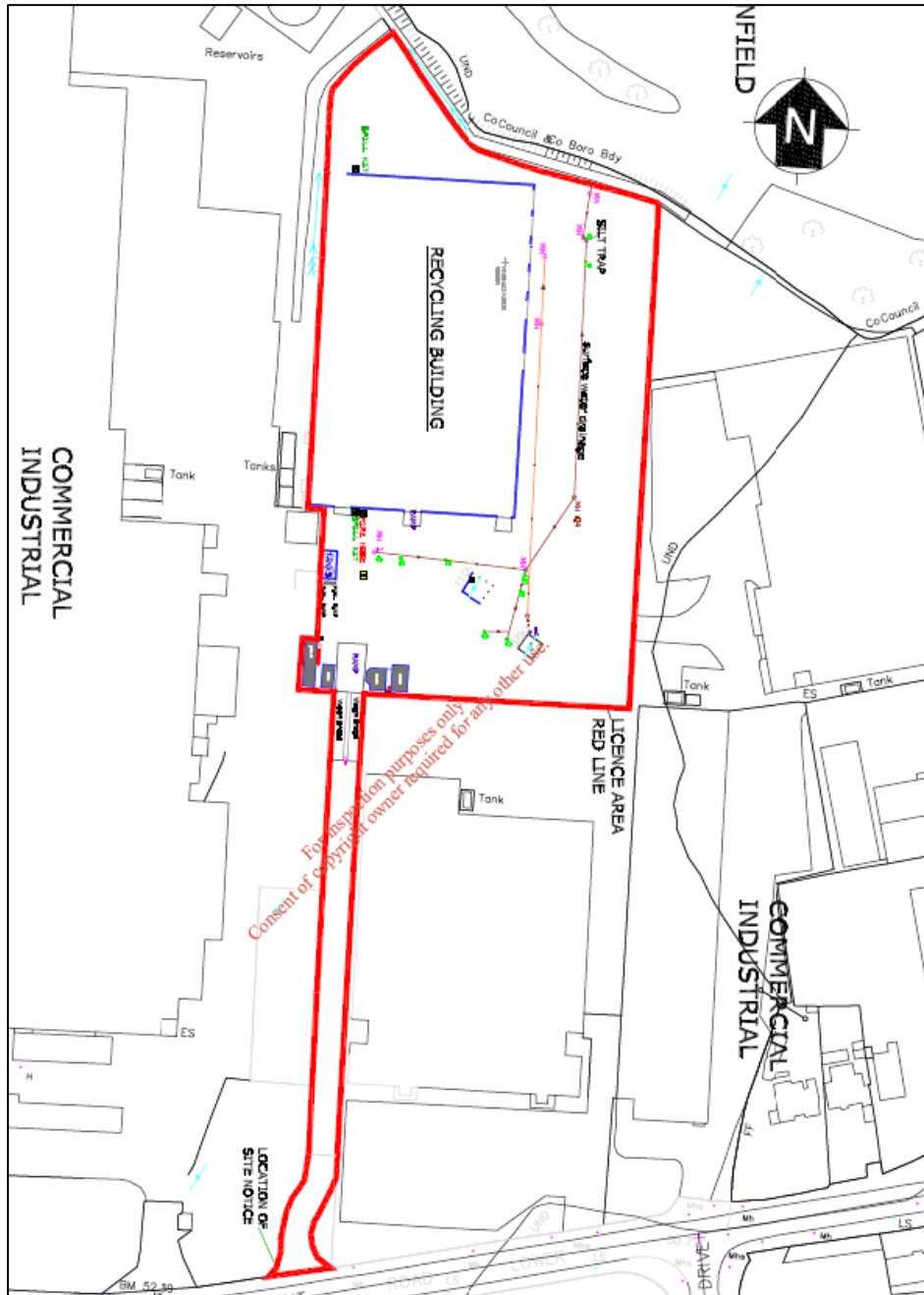
Recycling certificates are issued to customers, on request, so that they can determine their recycling on a monthly basis.

During the reporting period there were no requests from members of the public to inspect any Environmental Records.

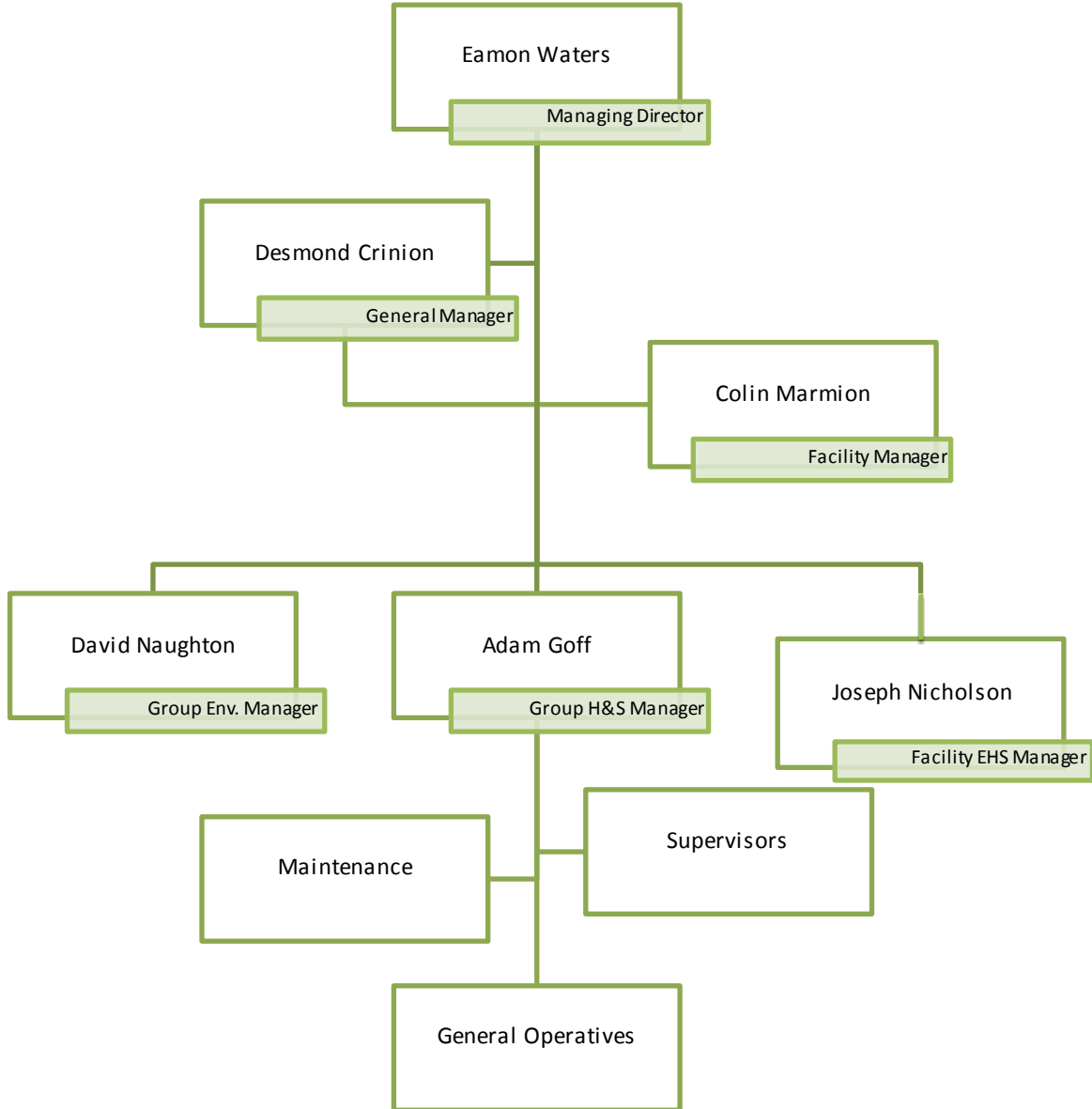
The information in the Annual Environmental Report is true and accurate representation of the activities conducted by IPR in 2012.

# Appendix A

Site Layout



## Appendix B



## Appendix C

### Financial Statement



Fagan Lynch Donnellan  
Chartered Accountants & Registered Auditors

Our Ref: VL/NMcK

6<sup>th</sup> March 2013

Environmental Protection Agency,  
McCumiskey House,  
Richview,  
Clonskeagh Road,  
Dublin 14.

**Re: Irish Packaging Recycling Limited**

Dear Sir,

We act as Auditors and Taxation Agents for the above and have acted in this capacity for the past 6 years.

We wish to confirm as follows:

1. Statutory Accounts have been filed for all years up to 31.12.2011 with the Companies Office.

Accounts and Tax Returns have also been filed with Inspector of Taxes for all years to 31<sup>st</sup> December 2011.

2. The Company trades profitably and is on a very sound financial footing.

If you have any queries, please do not hesitate to contact us.

Yours faithfully,

  
FAGAN LYNCH DONNELLAN

Newbridge House, Athlumney, Navan, Co. Meath  
Tel: (044) 9033700 Fax: (044) 9039141 e-mail: info@fd.ie www.fd.ie

John Fagan FCA Vincent Lynch FCA Mark McCartney FCCA

Registered to carry on audit work and authorised to carry on investment business by the Institute of Chartered Accountants in Ireland (ICAI).  
Chartered Accountants Ireland is the operating name of ICAI.



# Appendix D

## PRTR Emissions



| PRTR#: W0263 | Facility Name : Irish Packaging Recycling Limited | Filename : PRTR W0263\_2012.xls | Return Year : 2012 |

[Guidance to completing the PRTR workbook](#)

### AER Returns Workbook

Version 1.1.15

REFERENCE YEAR	2012
----------------	------

#### 1. FACILITY IDENTIFICATION

Parent Company Name	Irish Packaging Recycling Limited
Facility Name	Irish Packaging Recycling Limited
PRTR Identification Number	W0263
Licence Number	W0263-01

Waste or IPPC Classes of Activity	
N	class_name
4.2	Recycling or reclamation of organic substances which are not used as solvents (including composting and other biological transformation processes).

Address 1	Ballymount Road
Address 2	Walkinstown
Address 3	Dublin 12
Address 4	
	Dublin
Country	Ireland
Coordinates of Location	-6.34193 53.31824
River Basin District	IEEA
NACE Code	3832
Main Economic Activity	Recovery of sorted materials
AER Returns Contact Name	Joseph Nicholson
AER Returns Contact Email Address	joe.nicholson@ipr.ie
AER Returns Contact Position	EHS Manager
AER Returns Contact Telephone Number	01 4602011
AER Returns Contact Mobile Phone Number	086 022 6109
AER Returns Contact Fax Number	01 4602210
Production Volume	0.0
Production Volume Units	
Number of Installations	0
Number of Operating Hours in Year	0
Number of Employees	30
User Feedback/Comments	
Web Address	

#### 2. PRTR CLASS ACTIVITIES

Activity Number	Activity Name
50.1	General

#### 3. SOLVENTS REGULATIONS (S.I. No. 543 of 2002)

Is it applicable?	No
Have you been granted an exemption?	No
If applicable which activity class applies (as per Schedule 2 of the regulations)?	
Is the reduction scheme compliance route being used?	

#### 4. WASTE IMPORTED/ACCEPTED ONTO SITE

[Guidance on waste imported/accepted onto site](#)

Do you import/accept waste onto your site for on-site treatment (either recovery or disposal activities)?	
---	--

This question is only applicable if you are an IPPC or Quarry site

4.1 RELEASES TO AIR

[Link to previous years emissions data](#)

[PRTR# : W0263 | Facility Name : Irish Packaging Recycling Limited | Filename : PRTR W0263\_2012.xls | Return Year : 2012]

26/03/2013 13:34

SECTION A : SECTOR SPECIFIC PRTR POLLUTANTS

RELEASES TO AIR				Please enter all quantities in this section in KGs			
POLLUTANT		METHOD		ADD EMISSION POINT		QUANTITY	
No. Annex II	Name	M/C/E	Method Used	Emission Point 1	T (Total) KG/Year	A (Accidental) KG/Year	F (Fugitive) KG/Year
					0.0	0.0	0.0

ADD NEW ROW | DELETE ROW \* \* Select a row by double-clicking on the Pollutant Name (Column B) then click the delete button

SECTION B : REMAINING PRTR POLLUTANTS

RELEASES TO AIR				Please enter all quantities in this section in KGs			
POLLUTANT		METHOD		ADD EMISSION POINT		QUANTITY	
No. Annex II	Name	M/C/E	Method Used	Emission Point 1	T (Total) KG/Year	A (Accidental) KG/Year	F (Fugitive) KG/Year
					0.0	0.0	0.0

ADD NEW ROW | DELETE ROW \* \* Select a row by double-clicking on the Pollutant Name (Column B) then click the delete button

SECTION C : REMAINING POLLUTANT EMISSIONS (As required in your Licence)

RELEASES TO AIR				Please enter all quantities in this section in KGs								
POLLUTANT		METHOD		ADD EMISSION POINT			QUANTITY					
Pollutant No.	Name	M/C/E	Method Used	AD1	AD2	AD3	T (Total) KG/Year	A (Accidental) KG/Year	F (Fugitive) KG/Year			
210	Dust	M	ALT Gravimetry	Emission Point 1	Emission Point 2	Emission Point 3	0.04	0.03	0.04	0.11	0.0	0.0

ADD NEW ROW | DELETE ROW \* \* Select a row by double-clicking on the Pollutant Name (Column B) then click the delete button

Additional Data Requested from Landfill operators

For the purposes of the National Inventory on Greenhouse Gases, landfill operators are requested to provide summary data on landfill gas (Methane) flared or utilised on their facilities to accompany the figures for total methane generated. Operators should only report their Net methane (CH4) emission to the environment under T(total) KG/yr for Section A: Sector specific PRTR pollutants above. Please complete the table below:

Landfill: Irish Packaging Recycling Limited

Please enter summary data on the quantities of methane flared and / or utilised

	T (Total) kg/Year	M/C/E	Method Used		Facility Total Capacity m3 per hour
			Method Code	Designation or Description	
Total estimated methane generation (as per site model)	0.0				N/A
Methane flared	0.0				0.0 (Total Flaring Capacity)
Methane utilised in engine/s	0.0				0.0 (Total Utilising Capacity)
Net methane emission (as reported in Section A above)	0.0				N/A

4.2 RELEASES TO WATERS

[Link to previous years emissions data](#)

| PRTR# : W0263 | Facility Name : Irish Packaging Recycling Limited | Filename : PRTR W0263\_2012.xls | Return Year : 2012 |

26/03/2013 13:34

SECTION A : SECTOR SPECIFIC PRTR POLLUTANTS

Data on ambient monitoring of storm/surface water or groundwater, conducted as part of your licence requirements, should NOT be submitted under AER / PRTR

RELEASES TO WATERS					Please enter all quantities in this section in KGs			
POLLUTANT		METHOD USED			ADD EMISSION POINT	QUANTITY		
No. Annex II	Name	M/C/E	Method Code	Designation or Description	Emission Point 1	T (Total) KG/Year	A (Accidental) KG/Year	F (Fugitive) KG/Year
						0.0	0.0	0.0

ADD NEW ROW | DELETE ROW \* | \* Select a row by double-clicking on the Pollutant Name (Column B) then click the delete button

SECTION B : REMAINING PRTR POLLUTANTS

RELEASES TO WATERS					Please enter all quantities in this section in KGs			
POLLUTANT		METHOD USED			ADD EMISSION POINT	QUANTITY		
No. Annex II	Name	M/C/E	Method Code	Designation or Description	Emission Point 1	T (Total) KG/Year	A (Accidental) KG/Year	F (Fugitive) KG/Year
						0.0	0.0	0.0

ADD NEW ROW | DELETE ROW \* | \* Select a row by double-clicking on the Pollutant Name (Column B) then click the delete button

SECTION C : REMAINING POLLUTANT EMISSIONS (as required in your Licence)

RELEASES TO WATERS					Please enter all quantities in this section in KGs			
POLLUTANT		METHOD USED			ADD EMISSION POINT	QUANTITY		
Pollutant No.	Name	M/C/E	Method Code	Designation or Description	Emission Point 1	T (Total) KG/Year	A (Accidental) KG/Year	F (Fugitive) KG/Year
						0.0	0.0	0.0

4.3 RELEASES TO WASTEWATER OR SEWER

[Link to previous years emissions data](#)

| PRTR# : W0263 | Facility Name : Irish Packaging Recycling Limited | Filename : PRTR W0263\_2

26/03/2013 13:34

SECTION A : PRTR POLLUTANTS

OFFSITE TRANSFER OF POLLUTANTS DESTINED FOR WASTE-WATER TREATMENT OR SEWER					Please enter all quantities in this section in KGs			
POLLUTANT		METHOD			ADD EMISSION POINT	QUANTITY		
No. Annex II	Name	M/C/E	Method Code	Designation or Description	Emission Point 1	T (Total) KG/Year	A (Accidental) KG/Year	F (Fugitive) KG/Year
						0.0	0.0	0.0

ADD NEW ROW | DELETE ROW \* | \* Select a row by double-clicking on the Pollutant Name (Column B) then click the delete button

SECTION B : REMAINING POLLUTANT EMISSIONS (as required in your Licence)

OFFSITE TRANSFER OF POLLUTANTS DESTINED FOR WASTE-WATER TREATMENT OR SEWER					Please enter all quantities in this section in KGs			
POLLUTANT		METHOD			ADD EMISSION POINT	QUANTITY		
Pollutant No.	Name	M/C/E	Method Code	Designation or Description	Emission Point 1	T (Total) KG/Year	A (Accidental) KG/Year	F (Fugitive) KG/Year
						0.0	0.0	0.0

4.4 RELEASES TO LAND

[Link to previous years emissions data](#)

| PRTR# : W0263 | Facility Name : Irish Packaging Recycling Limited | Filename : PRTR W0263\_2012.xls | Return Year : 2012 |

26/03/2013 13:34

SECTION A : PRTR POLLUTANTS

RELEASES TO LAND				Please enter all quantities in this section in KGs		
POLLUTANT		METHOD		ADD EMISSION POINT	QUANTITY	
No. Annex II	Name	M/C/E	Method Used Method Code Designation or Description	Emission Point 1	T (Total) KG/Year	A (Accidental) KG/Year
				0.0	0.0	0.0

ADD NEW ROW    DELETE ROW \*    \* Select a row by double-clicking on the Pollutant Name (Column B) then click the delete button

SECTION B : REMAINING POLLUTANT EMISSIONS (as required in your Licence)

RELEASES TO LAND				Please enter all quantities in this section in KGs		
POLLUTANT		METHOD		ADD EMISSION POINT	QUANTITY	
Pollutant No.	Name	M/C/E	Method Used Method Code Designation or Description	Emission Point 1	T (Total) KG/Year	A (Accidental) KG/Year
				0.0	0.0	0.0

ADD NEW ROW    DELETE ROW \*    \* Select a row by double-clicking on the Pollutant Name (Column B) then click the delete button



5. ONSITE TREATMENT & OFFSITE TRANSFERS OF WASTE [ PRTR#: W0263 | Facility Name : Irish Packaging Recycling Limited | Filename : W0263\_2012.xls | Return Year : 2012 ]  
 Please enter all quantities on this sheet in Tonnes

Transfer Destination	European Waste Code	Hazardous	Quantity (Tonnes per Year)	Description of Waste	Waste Treatment Operation	Method Used		Location of Treatment	Haz Waste : Name and Licence/Permit No of Next Destination Facility Non-Haz Waste: Name and Licence/Permit No of Recover/Disposer	Haz Waste : Address of Next Destination Facility Non-Haz Waste: Address of Recover/Disposer
						M/C/E	Method Used			
To Other Countries	15 01 01	No	716.64	paper and cardboard packaging	R12	M	Weighed	Abroad	Agnail Ltd,Broker	88 Cherrywood Crescent, Clondalkin, Dublin 22, ,Ireland, Huangchong Village, Zhongtang Town, Dongguan City, Guangdong, China
To Other Countries	15 01 01	No	1549.58	paper and cardboard packaging	R12	M	Weighed	Abroad	Donngguan Huang Chong Jinzhou Paper Co Ltd,Broker	200 Tamal Plaza,Suite 200, Corte Madera, California 94925, United States
To Other Countries	15 01 01	No	704.26	paper and cardboard packaging	R12	M	Weighed	Abroad	Cellmark,Broker	12 The Triangle, Nottingham, ,NG2 1AE, United Kingdom
To Other Countries	15 01 01	No	14451.37	paper and cardboard packaging	R12	M	Weighed	Abroad	Mark Lyndon Paper Ent Uk Ltd,Broker	Adamson House, Towers Business Park, Wilmov Rd Didsbury Manchester, M20 2YY, United Kingdom
To Other Countries	15 01 01	No	19118.45	paper and cardboard packaging	R12	M	Weighed	Abroad	MLM Ltd,Broker	43 Zhongxing West Rd, Loushe Town, Huishan District Wuxi, Jiangsu, China
To Other Countries	15 01 01	No	2998.48	paper and cardboard packaging	R12	M	Weighed	Abroad	Wuxi Longchem Paper Co Ltd,Broker	Unit 2501-2503 Office Building ,Paragon Center no.1 Lianyue road,Xiamen Fujian, ,China
To Other Countries	15 01 01	No	2358.02	paper and cardboard packaging	R12	M	Weighed	Abroad	Xiamen Jiuli Paper imp and exp Co Ltd, , ,	No 3516 Hushunan Road, Hangzhou, , ,China
To Other Countries	15 01 01	No	511.16	paper and cardboard packaging	R12	M	Weighed	Abroad	Zhejiang Dingzun Trading Co Ltd,Broker	In Zhongshan Sugar Factory, Huangpu Town, Zhongshan City, ,China
To Other Countries	15 01 01	No	4566.44	paper and cardboard packaging	R12	M	Weighed	Abroad	Zhongshan Yongfa Paper Industries Co Ltd,Broker	Rathdrinagh, Beauparc Business Park, Navan, Co. Meath, Ireland
Within the Country	15 01 01	No	24.34	paper and cardboard packaging	R12	M	Weighed	Offsite in Ireland	Panda Navan,W0140-03	2B Kylemore Ind Est, Ballyfermot, Dublin 10, ,Ireland
Within the Country	15 01 01	No	63.87	paper and cardboard packaging	R12	M	Weighed	Offsite in Ireland	Rebox ,N/a	Reask, Dunshaughlin, Co. Meath, ,Ireland
Within the Country	15 01 01	No	6.58	paper and cardboard packaging	R12	M	Weighed	Offsite in Ireland	Tree Friendly Cartos,N/a	
To Other Countries	15 01 01	No	165.9	paper and cardboard packaging	R12	M	Weighed	Abroad	Vipa Lausanne SA,Broker	Galeries Benjamin Constan 1,Case Postable 7700, 1002 Lausanne (Ch) , ,Switzerland
To Other Countries	15 01 01	No	1175.46	paper and cardboard packaging	R12	M	Weighed	Abroad	Peute Papier Recycling BV,Broker	Baanhoekweg 4, 3313 La Dordrecht, , ,Netherlands
To Other Countries	15 01 01	No	982.74	paper and cardboard packaging	R12	M	Weighed	Abroad	Envirogreen Recycling,Broker	4 Washing Bay Road, Coalisland, Co. Tyrone, BT71 4ND, United Kingdom
To Other Countries	15 01 01	No	945.62	paper and cardboard packaging	R12	M	Weighed	Abroad	Harmon Internation,Broker	Tithe Barn, Bradbourne Stables Bradbourne House, East Malling Kent, ME19 6DZ, United Kingdom
To Other Countries	15 01 01	No	7.2	paper and cardboard packaging	R12	M	Weighed	Abroad	Rehisswolf Ltd,Broker	Unit 9 Springhill Road, Carnebane Industrial Estate, Newry, Co. Down, Ireland
To Other Countries	15 01 01	No	11060.1	paper and cardboard packaging	R12	M	Weighed	Abroad	Saica Natur,Broker	Charlton Business Park, Crudwell Road, Malmesbury, Wiltshire, United Kingdom
To Other Countries	15 01 01	No	25.0	paper and cardboard packaging	R12	M	Weighed	Abroad	Boost Recycling Ltd,Broker	47 Swaffham Road, Burwell, Cambridgeshire, CB25 0AN, United Kingdom
Within the Country	15 01 01	No	10708.39	paper and cardboard packaging	R12	M	Weighed	Offsite in Ireland	Greyhound,W0205-01	Crag Avenue, Clondalkin, Dublin 22, ,Ireland
To Other Countries	15 01 01	No	115.1	paper and cardboard packaging	R12	M	Weighed	Abroad	Highlander International Recycling Ltd,Broker	Linewood Ave, East Kilbride, Glasgow, G74 5NE, United Kingdom
To Other Countries	15 01 01	No	8275.92	paper and cardboard packaging	R12	M	Weighed	Abroad	Marwin Environmental Trading Ltd,Broker	7 Glyntown Heights, Glamire, Co. Cork, ,Ireland
To Other Countries	15 01 01	No	3943.7	paper and cardboard packaging	R12	M	Weighed	Abroad	Midland Waste,W0131-02	Proudstown Road, Navan, Co. Meath, ,Ireland
Within the Country	15 01 01	No	242.4	paper and cardboard packaging	R12	M	Weighed	Offsite in Ireland	Oxigen Environmental Ltd,W0206	Merrywell Industrial Estate, Ballymounbt road lower, Dublin 22, ,Ireland
To Other Countries	15 01 01	No	3468.37	paper and cardboard packaging	R12	M	Weighed	Abroad	Sca Emd Recycling,Broker	543 Hythe Lane, Larkfield Aylesford, Kent, M320 7PE, United Kingdom
To Other Countries	15 01 01	No	2514.27	paper and cardboard packaging	R12	M	Weighed	Abroad	Smurfit Recycling ,n/a	Ballymount road, Walkingstown, Dublin 12, ,Ireland

To Other Countries	15 01 02	No	505.82 plastic packaging	R12	M	Weighted	Abroad	MLM Ltd,Broker	Adamson House,Towers Business Park,Wilmlov Rd Didsbury Manchester,M20 2YY,United Kingdom
To Other Countries	15 01 02	No	683.74 plastic packaging	R12	M	Weighted	Abroad	Tianjin Yunxiang Toning Metal Product Co,Broker	Room 102 Haijing Building,No 197 Haibin Fifteen Road,TPFTS,China Unit 807 8/F Mackennycentre,660 Castel Peak road,Kowloon,Hong Kong
To Other Countries	15 01 02	No	375.72 plastic packaging	R12	M	Weighted	Abroad	Vanden Global Ltd,Broker	13 The Willows,Fotarock,Carrigtwohill,Co. Cork,Ireland
To Other Countries	15 01 02	No	596.68 plastic packaging	R12	M	Weighted	Abroad	ZS Green Environmental Solutions Ltd,Broker	Mount Mahon Industrial Estate,Abbeyfeale,Co. Limerick,Ireland
Within the Country	15 01 02	No	9.42 plastic packaging	R12	M	Weighted	Offsite in Ireland	Sprinfeld Plastics 343 Ltd,N/a	Lossets,Kingscross road,Carrickmacross,Co. Monaghan,Ireland
Within the Country	15 01 02	No	9.84 plastic packaging	R12	M	Weighted	Offsite in Ireland	ADN Materials Ltd.	Lossets,Kingscross road,Carrickmacross,Co. Monaghan,Ireland
Within the Country	15 01 02	No	21.14 plastic packaging	R12	M	Weighted	Offsite in Ireland	ADN Materials Ltd.	88 Cherrywood Crescent,Clondalkin,Dublin 22,Ireland
Within the Country	15 01 02	No	17.1 plastic packaging	R12	M	Weighted	Offsite in Ireland	Polymer Recovery ,Wfp-ww-12-0030-01	Newtown Rathangan,Co.Kildare,Ireland
Within the Country	15 01 02	No	300.84 plastic packaging	R12	M	Weighted	Offsite in Ireland	Recyclenet Ireland Ltd,Broker	Kilcard Ind Est,Bree,Castleblaney,Co. Monaghan,Ireland
Within the Country	15 01 02	No	24.44 plastic packaging	R12	M	Weighted	Offsite in Ireland	Shabra Plastics and Recycling Ltd,WFP-MN-08-0022-01	4th Floor Lapps Quay,CoCork,Ireland
Within the Country	15 01 02	No	50.1 plastic packaging	R12	M	Weighted	Offsite in Ireland	Vindis Plastics Ltd,WFP-TS-10-0003-03	Weir Road Business Park,Tuam,Co.Galway,Ireland
Within the Country	15 01 02	No	6.04 plastic packaging	R12	M	Weighted	Offsite in Ireland	W.E.R.S Waste Ltd.,CP608	Willow Mount,Killpoole Hill,Wicklow Town,Co.Wicklow,Ireland
Within the Country	15 01 02	No	8.9 plastic packaging	R12	M	Weighted	Offsite in Ireland	Wicklow Recycling,Broker	88 Cherrywood Crescent,Clondalkin,Dublin 22,Ireland
To Other Countries	15 01 02	No	21.65 plastic packaging	R12	M	Weighted	Abroad	Agnail Ltd,Broker	Priamsingel 51,2909 Re Capelle Aan Den Ijssel,Netherlands
To Other Countries	15 01 02	No	87.46 plastic packaging	R12	M	Weighted	Abroad	Lawsco BV,Broker	Baanhoekweg 4,3313 La Dordrecht,Netherlands
To Other Countries	15 01 02	No	647.24 plastic packaging	R12	M	Weighted	Abroad	Peute Papier Recycling BV,Broker	Unit 2 Britannia Business Park,Point Pleasant Ind Est,Wallsend Tyne and Wear,NE28 6HA,United Kingdom
To Other Countries	15 01 02	No	134.9 plastic packaging	R12	M	Weighted	Abroad	Alternative Waste Solutions Ltd,Broker	Ballyregan,Castlebridge,Co. Wexford,Ireland
To Other Countries	15 01 02	No	8.2 plastic packaging	R12	M	Weighted	Abroad	Cam-Shron Environmental Ltd,Broker	96 St.Patrick street,Dun Laoghaire,Co.Dublin,Ireland
To Other Countries	15 01 02	No	18.14 plastic packaging	R12	M	Weighted	Abroad	Colm McDowell & Associates ,Broker	4 Washing Bay Road,Coalisland,Co. Tyrone,BT71 4ND,United Kingdom
To Other Countries	15 01 02	No	304.21 plastic packaging	R12	M	Weighted	Abroad	Envirogreen Recycling,Broker	96 Toft Hill,Bishop Auckland,Co.Durham,DL14 OJA,United Kingdom
To Other Countries	15 01 02	No	45.42 plastic packaging	R12	M	Weighted	Abroad	GFSL Ltd,Broker	11 Porthill Road,Mountnorris,Co. Armagh,BT60 2TY,Ireland
To Other Countries	15 01 02	No	97.14 plastic packaging	R12	M	Weighted	Abroad	Greenway Ireland Ltd,Broker	Oxnam Road,Jedburgh,Roxburghshire,TD8 6NN,United Kingdom
To Other Countries	15 01 02	No	109.24 plastic packaging	R12	M	Weighted	Abroad	Mainetti (UK) Ltd,Broker	Unit 1 Block 10,Broomhill Business Park,Rathnew,Co.Wicklow,Ireland
To Other Countries	15 01 02	No	4.68 plastic packaging	R12	M	Weighted	Abroad	Restwing Trading Ltd,Broker	Suite 5,30 Lancaster Gate,London,W2
To Other Countries	15 01 02	No	49.46 plastic packaging	R12	M	Weighted	Abroad	Asia Global Trade,Broker	3LP,United Kingdom 47 Swaffham Road,Burwell,Cambridgeshire,CB25 0AN,United Kingdom
To Other Countries	15 01 02	No	26.3 plastic packaging	R12	M	Weighted	Abroad	Boost Recycling Ltd,Broker	11 Triangle South,Clifton,Bristol,UKBS8 1EY,United Kingdom
To Other Countries	15 01 02	No	50.86 plastic packaging	R12	M	Weighted	Abroad	Failand Paper Services Ltd.,Broker	Crag Avenue,Clondalkin,Dublin 22,Ireland
Within the Country	15 01 02	No	80.76 plastic packaging	R12	M	Weighted	Offsite in Ireland	Greyhound,W0205-01	22,Ireland
Within the Country	15 01 02	No	679.53 plastic packaging	R12	M	Weighted	Offsite in Ireland	Leinster Environmental,Wp 2004/03	Dundalk,Co. Louth,Ireland

Within the Country	15 01 02	No	554.94 plastic packaging	R12	M	Weighed	Offsite in Ireland	Materia Environment Ltd.,Broker	Kipper House, Scilly, Kinsale, Co. Cork, Ireland
Within the Country	15 01 02	No	0.78 plastic packaging	R12	M	Weighed	Offsite in Ireland	Midland Waste, W0131-02	Proudstown Road, Navan, Co. Meath, Ireland
Within the Country	15 01 02	No	289.4 plastic packaging	R12	M	Weighed	Offsite in Ireland	Oxigen Environmental Ltd, W0208	Merrywell Industrial Estate, Ballymounbt road lower, Dublin 22, Ireland
Within the Country	15 01 02	No	114.1 plastic packaging	R12	M	Weighed	Offsite in Ireland	Pac On Waste & Recycling Ltd, WPT 122	B.E.A. Centre, Stephenstown Industrial Estate, Balbriggan, Co. Dublin, Ireland
To Other Countries	15 01 02	No	827.76 plastic packaging	R12	M	Weighed	Abroad	WRC Recycling, Broker	Auchans Farm, Johnstone, Renfrewshire, PA6 7EE, United Kingdom
Within the Country	15 01 03	No	1039.99 wooden packaging	R12	M	Weighed	Offsite in Ireland	TD Freight Ltd, Broker	Tullycara, Castleblaney, Co. Monaghan, Ireland
Within the Country	15 01 03	No	0.28 wooden packaging	R12	M	Weighed	Offsite in Ireland	Agnail Ltd, Broker	88 Cherrywood Crescent, Clondalkin, Dublin 22, Ireland
Within the Country	15 01 03	No	0.7 wooden packaging	R12	M	Weighed	Offsite in Ireland	AES-T/A Rentabin, W0131-02 / WCP-OY-08-601-01	Unit 1 Monread Commercial Park, Monread road, Naas, Co. Kildare, Ireland
Within the Country	15 01 03	No	193.5 wooden packaging	R12	M	Weighed	Offsite in Ireland	Conroy Recycling, WP-04/2002	Kildallon, Mullingar, Co. Westmeath, Ireland
Within the Country	15 01 03	No	9.48 wooden packaging	R12	M	Weighed	Offsite in Ireland	Panda Waste Services, W0039-02	Ballymount Cross, Tallaght, Dublin 24, Ireland
To Other Countries	15 01 03	No	5.32 wooden packaging	R12	M	Weighed	Abroad	Brendan Durkin, Broker	Unit 9 Springfield Road, Carnbane Industrial Estate, Newry, Co. Down, BT35 6EF, Ireland
To Other Countries	15 01 03	No	2.86 wooden packaging	R12	M	Weighed	Abroad	Envirogreen Recycling, Broker	4 Washing Bay Road, Coalisland, Co. Tyrone, BT71 4ND, United Kingdom
To Other Countries	15 01 03	No	165.76 wooden packaging	R12	M	Weighed	Abroad	Failand Paper Services Ltd., Broker	11 Triangle South, Clifton, Bristol, UK BS8 1EY, United Kingdom
Within the Country	15 01 03	No	215.78 wooden packaging	R12	M	Weighed	Offsite in Ireland	Greyhound, W0205-01	Crag Avenue, Clondalkin, Dublin 22, Ireland
Within the Country	15 01 03	No	0.36 wooden packaging	R12	M	Weighed	Offsite in Ireland	Leinster Environmental, Wp 2004/03	Dundalk, Co. Louth, Ireland
Within the Country	15 01 04	No	44.54 metallic packaging	R12	M	Weighed	Offsite in Ireland	Greenstar/MSM Recycling, W0079-01	Unit 41, Cookstown Industrial Estate, Tallaght, Dublin 24, Ireland
Within the Country	15 01 04	No	1.4 metallic packaging	R12	M	Weighed	Offsite in Ireland	Wilton Waste Recycling Ltd, WFP CN-10-000-5-01(1)	Kiffa, Crosserlough, Ballyjamessuff, Co. Cavan, Ireland
To Other Countries	15 01 04	No	2.14 metallic packaging	R12	M	Weighed	Abroad	Envirogreen Recycling, Broker	4 Washing Bay Road, Coalisland, Co. Tyrone, BT71 4ND, United Kingdom
Within the Country	15 01 04	No	0.42 metallic packaging	R12	M	Weighed	Offsite in Ireland	Greyhound, W0205-01	Crag Avenue, Clondalkin, Dublin 22, Ireland
To Other Countries	16 01 03	No	368.76 end-of-life tyres	R12	M	Weighed	Abroad	Agnail Ltd, Broker	88 Cherrywood Crescent, Clondalkin, Dublin 22, Ireland
To Other Countries	20 01 01	No	3271.05 paper and cardboard	R12	M	Weighed	Abroad	Agnail Ltd, Broker	88 Cherrywood Crescent, Clondalkin, Dublin 22, Ireland
To Other Countries	20 01 01	No	1878.06 paper and cardboard	R12	M	Weighed	Abroad	Adamson House, Towers Business Park, Wilmlov Rd Didsbury Manchester, M20 2YY, United Kingdom	
Within the Country	20 01 01	No	23.63 paper and cardboard	R12	M	Weighed	Offsite in Ireland	MLM Ltd, Broker Leech Papers, WFP-DC-10-0017-01	Shamrock Place, North Strand, Dublin 1, Ireland Rathdown Cl/Lissue Ind Est west Moira Road Lisburn BT29 2RB United Kingdom, Moira Road, Lisburn BT28 2RB, Co. Antrim, United Kingdom
To Other Countries	20 01 01	No	80.23 paper and cardboard	R12	M	Weighed	Abroad	Paperman Products, Broker	Head and Registered Office: Unit 11 Alvaston Business Park, Middlewich road Nantwich Cheshire, CW5 6 PF, United Kingdom
To Other Countries	20 01 01	No	305.52 paper and cardboard	R12	M	Weighed	Abroad	Recycling UK Ltd, Broker	Kingdom

To Other Countries	20 01 01	No	21.66 paper and cardboard	R12	M	Weighed	Abroad	Peute Papier Recycling BV,Broker	Baanhoekweg 4,3313 La Dordrecht,...,Netherlands
To Other Countries	20 01 01	No	49.94 paper and cardboard	R12	M	Weighed	Abroad	Agnail Ltd,Broker	88 Cherrywood Cresent,Clondalkin,Dublin 22,...,Ireland
To Other Countries	20 01 01	No	1106.05 paper and cardboard	R12	M	Weighed	Abroad	Ashley Waste Sales Ltd,Broker	Underwood House,Ashley,Atrincham Cheshire,WA 15ORD,United Kingdom
To Other Countries	20 01 01	No	3722.92 paper and cardboard	R12	M	Weighed	Abroad	Harmon Internation,Broker	Tithe Barn,Bradbourne Stables Bradbourne House,East Malling Kent,ME19 6D2,United Kingdom
To Other Countries	20 01 01	No	326.52 paper and cardboard	R12	M	Weighed	Abroad	Palm Recycling Ltd,Broker	Pioneer House North Road,Ellesmere Port,Cheshire,CH651AD,United Kingdom
To Other Countries	20 01 01	No	74.18 paper and cardboard	R12	M	Weighed	Abroad	Failand Paper Services Ltd.,Broker	11 Triangle South Clifton,Bristol,UKBS8 1EY,United Kingdom
To Other Countries	20 01 01	No	1079.18 paper and cardboard	R12	M	Weighed	Abroad	Highlander International Recycling Ltd,Broker	Linewood Ave,East Kilbridge,Glasgow,G74 5NE,United Kingdom
To Other Countries	20 01 01	No	13049.88 paper and cardboard	R12	M	Weighed	Abroad	Sca.Emd Recycling,Broker	543 Hythe Lane,Larkfield Aylesford,Kent,M320 7PE,United Kingdom
Within the Country	20 01 01	No	379.52 paper and cardboard discarded electrical and electronic equipment other than those mentioned in	R12	M	Weighed	Offsite in Ireland	Greyhound,W0205-01	Crag Avenue,Clondalkin,Dublin 22,...,Ireland
Within the Country	20 01 36	No	2.28 20 01 21, 20 01 23 and 20 01 35	R12	M	Weighed	Offsite in Ireland	Rehab Recycle Ltd,WFP-DS10-0008-03	Unit 77 Broomhill Road,Tallaght,Dublin 24,...,Ireland
Within the Country	20 01 39	No	30.04 plastics	R12	M	Weighed	Offsite in Ireland	Greenstar Ltd,W0183	Millenium Park MRF,Dublin 11,...,Ireland
Within the Country	20 01 39	No	17.7 plastics	R12	M	Weighed	Offsite in Ireland	Leech Papers,WFP-DC-10-0017-01	Shamrock Place,North Strand,Dublin 1,...,Ireland
Within the Country	20 01 39	No	7.42 plastics	R12	M	Weighed	Offsite in Ireland	Paperman Products,Broker	Rathdown Cl/Lissue Ind Est west Moira Road Lisburn BT28 2RB United Kingdom,Moira Road, Lisburn BT28 2RB,Co.Antrim,United Kingdom
Within the Country	20 01 39	No	8.08 plastics	R12	M	Weighed	Offsite in Ireland	Shabra Plastics and Recycling Ltd,WFP-MN-08-0022-01	Kilcard Ind Est,Bree,Castleblaney,Co.Monaghan,Ireland
To Other Countries	20 01 39	No	13.64 plastics	R12	M	Weighed	Abroad	Agnail Ltd,Broker	88 Cherrywood Cresent,Clondalkin,Dublin 22,...,Ireland
To Other Countries	20 01 39	No	10.18 plastics	R12	M	Weighed	Abroad	Restwing Trading Ltd,Broker	Unit 1 Block 10,Broomhill Business Park,Rathnew,Co.Wicklow,Ireland
To Other Countries	20 01 39	No	20.12 plastics	R12	M	Weighed	Abroad	Highlander International Recycling Ltd,Broker	Linewood Ave,East Kilbridge,Glasgow,G74 5NE,United Kingdom
Within the Country	20 01 39	No	57.78 plastics	R12	M	Weighed	Offsite in Ireland	Leinster Environmental,Wp 2004/03	Dundalk,Co. Louth,...,Ireland
To Other Countries	20 01 39	No	27.08 plastics	R12	M	Weighed	Abroad	WRC Recycling,Broker	Auchans Farm,Johnstone,Renfrewshire,PA6 7EE,United Kingdom
Within the Country	20 03 01	No	281.89 mixed municipal waste	R12	M	Weighed	Offsite in Ireland	Greyhound,W0205-01	Crag Avenue,Clondalkin,Dublin 22,...,Ireland
Within the Country	20 03 01	No	479.62 mixed municipal waste	R12	M	Weighed	Offsite in Ireland	Panda Navan,W0140-03	Rathdrinagh,Beauparc Business Park,Navan,Co.Meath,Ireland
Within the Country	20 03 01	No	551.1 mixed municipal waste	R12	M	Weighed	Offsite in Ireland	Panda Waste Services,W0039-02	Ballymount Cross,Tallaght,Dublin 24,...,Ireland
Within the Country	20 03 01	No	97.4 mixed municipal waste	R12	M	Weighed	Offsite in Ireland	Midland Waste,W0131-02	Proudstown Road,Navan,Co.Meath,...,Ireland