



*Site: Merrywell Industrial Estate,  
Ballymount Road Lower,  
Ballymount, Dublin 22.*

*Waste Licence Number W0238-01*

## *Annual Environmental Report*

*16<sup>th</sup> January 2012 – 31<sup>st</sup> December 2012*

---

## Table of Contents

Table of Contents .....	2
1.1 Company Details .....	4
1.2 Management Structure.....	5
1.3 Financial Provision.....	5
1.4 Environmental Policy .....	5
1.5 Activities .....	6
1.6 Water Usage .....	7
2.1 Waste Received .....	7
2.2 Waste Transferred Off-Site for Disposal or Recovery .....	7
2.3 waste recovery reports .....	8
2.4 Summary report on emissions and interpretation of environmental monitoring .....	8
2.4.1 Storm Water Emissions .....	8
2.4.2 Noise Emissions .....	9
2.4.3 Tank and Pipeline Testing and Inspection Report. ....	11
2.4.4 Summary of Resource and Energy Consumption .....	11
2.4.5 Water.....	11
2.5 Site Infrastructure .....	11
2.5.1 In – place.....	11
2.6 Progress report on proposals developed to minimise water demand.....	13
2.7 PRTR Emission. ....	13
3.1 Summary of Reported Incidents and Complaints.....	18
3.1.1 Reported Incidents Summary.....	18
3.1.2 Complaints.....	18
3.2 Review of Nuisance Controls .....	18
3.2.1 Odour.....	18
3.2.2 Noise .....	18
3.2.3 Vermin .....	19
3.2.4 Flies.....	19
3.2.5 Birds.....	19

---

3.2.6 Litter .....	19
4.0 Development of Procedures on Site.....	19
5.0 Pollution Emission Register .....	20
6.0 Report on Programme for Public Information .....	20
Appendix A .....	21
Appendix B.....	22
Appendix C.....	23
Appendix D .....	24

---

## **1.0 Introduction**

Irish Packaging Recycling Ltd. operate Waste Licence W0238-01 on behalf of Dublin City Council.

The following Annual Environmental Report was prepared in accordance with Condition 11.8 and Schedule E of Waste Licence W0238-01, and with reference to Environmental Protection Agency guidance on Annual Environmental Reporting. This AER relates to the calendar year 2012. The report provides details of the activities carried out at the facility from the 16th of January 2012 to the 31st December 2012.

Greyhound Recycling and Recovery Ltd operated waste licence W0238-01 on behalf of Dublin City Council from 01st January 2012 to the 15th January 2012.

### **1.1 Company Details**

Licence No: W0238-01

Name: Irish Packaging Recycling Ltd

Address: Ballymount Road,  
Walkinstown,  
Dublin 12.

Telephone Number: 01 4602011

Fax Number: 01 4602210

Website: [www.panda.ie](http://www.panda.ie)

## **1.2 Management Structure**

There are 80 employees either working directly or indirectly at the facility. Appendix B illustrates the organisational structure of the facility.

## **1.3 Financial Provision**

A statement from our accountants is provided in Appendix C. At the present time the annual turnover and company assets are sufficient to offset environmental liabilities incurred during the course of operations and in the event that the company is closed.

## **1.4 Environmental Policy**

In carrying out our function, IPR/Panda acknowledge that our activities impact upon the environment both through routine internal operations and the actions of our staff.

It is Panda's policy to protect the environment during all activities, both on and off-site.

This is achieved by:

- Strategic preparation and implementation of operating procedures (including an emergency response procedure).
- Utilizing BAT (Best Available Technology).
- Actively promoting environmental awareness amongst staff and clients through appropriate training and communication programs.
- Reduce energy use through effective education and awareness and the installation of energy efficient technology where appropriate.
- Implementing a policy of continuous improvement, by means of targeted objectives. All objectives and targets are monitored and up-dated accordingly.

IPR/Panda are committed to complying with all relevant environmental regulations and aim to supply a safe competitive and sustainable service with specific regards to the surrounding environment.

### 1.5 Activities

Irish Packaging Recycling Ltd commenced operation of the Regional Materials Recovery Facility on behalf of the four Dublin Local Authorities under Waste Licence W0238-01 in January 2012. This licence allows Irish Packaging Recycling Ltd. to carry out the following waste handling activities as permitted under the Third and Fourth Schedules of the Waste Management Act 1996 to 2003:

- Class 12 and 13 Waste Disposal Activities, in accordance with the Third Schedule of the Waste Management Act, 1996.

**Third Schedule, Class 12:** Repackaging prior to submission to any activity referred to in a preceding paragraph of this Schedule.

**Third Schedule, Class 13:** Storage prior to submission referred to in a preceding paragraph of this Schedule, other than temporary storage, pending collection, on the premises where the waste concerned is produced.

- Class 2, 3, 4 and 13 Waste Recovery Activities, in accordance with the Fourth Schedule of the Waste Management Act, 1996.

**Forth Schedule, Class 2:** Recycling or reclamation of organic substances which are not used as solvents (including composting and other biological transformation processes). Principle activity.

**Forth Schedule, Class 3:** Recycling or reclamation of metal and metal compounds.

**Forth Schedule, Class 4:** Recycling or reclamation of other inorganic materials

**Forth Schedule, Class 13:** Storage of waste intended for submission to any activity referred to in a preceding paragraph of this Schedule, other than temporary storage, pending collection, on the premises where the waste concerned is produced.

Irish Packaging Recycling Ltd accepts household dry recyclable materials that have been collected in a single co-mingled waste stream from kerbside collections to the Regional Materials Recovery Facility. The materials accepted include paper, newspapers, magazines, cardboard, aluminium cans, steel cans, tetrapak beverage cartons, plastic bottles including PET, HDPE, PVC

containers and plastic film. All materials collected and processed at the Regional MRF come from the Dublin Region.

Irish Packaging Recycling Ltd also accepts small quantities of commercial dry recyclable materials to the Regional Materials Recovery Facility. The materials accepted include paper, cardboard, aluminium and steel cans, and mixed plastics.

**1.6 Water Usage**

Water for fire sprinkler system is taken from a holding tank located on the facility. Water to office and amenities is taken from a municipal supply and is metered by the council.

**2.0 Summary Information**

**2.1 Waste Received**

The waste received at the facility from the 16<sup>th</sup> January 2012 to the 31<sup>st</sup> December 2012 was 64, 645.00 tonnes. IPR have No access to records from the 1<sup>st</sup> January 2013 to 15th January 2013.

TABLE 1: Waste received in 2012.

<b>EWC Code</b>	<b>Waste Description</b>	<b>Tonnage</b>
20 03 01	Mixed Dry Recyclables	64,478.03
15 01 01	Paper and Cardboard	86.09
15 01 02	Plastic Packaging	80.88

**2.2 Waste Transferred Off-Site for Disposal or Recovery**

See Appendix D for the breakdown of the different destinations used for the waste removed off site by EWC code.

### 2.3 waste recovery reports

TABLE 2: Outgoing destination and recovery rate.

Destination	Tonnage	%
Disposal	0	0
Recovery	62,155.04	100

### 2.4 Summary report on emissions and interpretation of environmental monitoring

Under condition 6 and Schedule C of the licence W0238-01, IPR are required to monitor storm water emissions and noise. The following sub-headings detail the results from independent laboratories of the different parameters and the emission limit values ELV's set by the EPA and any complaints and incident that may have occurred during the year.

#### 2.4.1 Storm Water Emissions

TABLE 3: Quarterly Samples.

Quarter 1:

Test Parameter	SOP	Analytical Technique	Result	Units
COD (surface water)	107	Colorimetry	5	mg/L
pH (surface water)	110	Electrometry	7.6	pH Units
Solids (total suspended)	106	Filtration / Drying @ 104C	13	mg/L



Quarter 2:

Test Parameter	SOP	Analytical Technique	Result	Units
COD (surface water)	107	Colorimetry	12	mg/L
pH (surface water)	110	Electrometry	7.8	pH Units
Solids (total suspended)	106	Filtration / Drying @ 104C	35	mg/L

Quarter 3:

Test Parameter	SOP	Analytical Technique	Result	Units
COD (Industrial Eff.)	107	Colorimetry	<5	mg/L
pH (Industrial Eff.)	110	Electrometry	7.3	pH Units
Suspended Solids (Industrial Eff.)	106	Gravimetry	9	mg/L

Quarter 4:

Test Parameter	SOP	Analytical Technique	Result	Units
COD (surface water)	107	Colorimetry	<5	mg/L
pH (surface water)	110	Electrometry	7.2	pH Units
Solids (total suspended)	106	Filtration / Drying @ 104C	56	mg/L

2.4.2 Noise Emissions

Noise emissions are monitored according to Schedule B.4 and Condition 6.15 of the licence. An independent competent consultant was commissioned to conduct the noise sampling for the facility. Table 4 details results of noise monitoring conducted in 2012.

TABLE 4: Noise Emissions 2012

**Recorded day-time noise levels dB(A) -30 minute intervals**

Location id (Time)	Leq	L10	L90	Comments

N1 (15.30)	59.3	63.1	54.4	Adjacent site dominant contributing factor to noise levels
N2 (16.30)	60.2	61.6	57.5	Road traffic noise dominant contributing factor to noise levels
N3 (14.30)	59.7	61.4	57.3	Road traffic noise dominant contributing factor to noise levels
N4 (16.40)	61.7	62.7	60.3	Adjacent site dominant contributing factor to noise levels
N5 (18.00)	55	57.7	49.1	At nearest Noise Sensitive Location. Road traffic noise dominant contributing factor to noise levels

**Recorded night-time noise levels dB(A) -30 minute intervals**

Location id	Leq	L10	L90	Comments
N1	54.3	53.8	49.7	Adjacent site dominant contributing factor to noise levels
N2	52	52.7	49.6	Road traffic noise dominant contributing factor to noise levels
N3	53.4	54.3	49.8	Road traffic noise dominant contributing factor to noise levels
N4	56.4	57.4	50.9	Adjacent site dominant contributing factor to noise levels
N5	51.5	52.9	49.8	At nearest Noise Sensitive Location. Road traffic noise dominant contributing factor to noise levels

2.4.3 Tank and Pipeline Testing and Inspection Report.

Siac Construction Ltd. carried out all pipeline integrity testing in December 2008. The pipes will be scheduled for testing in 2013 providing Irish Packaging Recycling is running the facility.

2.4.4 Summary of Resource and Energy Consumption

Table 5: Summary of Resource and Energy Consumption from 16<sup>th</sup> January 2012 to December 2012.

Raw Material/Resource	Application	Consumption
Electricity	Office and plant use	2,347.08 MWhr
Hydraulic Oil	Process plant and fleet vehicles	5145.33 Litres
Marked Diesel	Mobile plant machinery	97,738 Litres

2.4.5 Water

Water for fire sprinkler system is taken from a holding tank located on the facility. Water to office and amenities is taken from a municipal supply and is metered by the council.

2.5 Site Infrastructure

2.5.1 In – place

The current site infrastructure is outlined below (List 1). List 2 details the waste processing equipment used on site.

**List 1: Current site infrastructure**

1. Offices
2. Dual Weighbridge.
3. One x Waste processing building
4. One sprinkling system
5. Canteen & toilets.
6. Maintenance Workshop
  
7. Fencing around the site
  
8. ESB sub station

**List 2: Waste processing equipment**

- 1 x Shovel
- 3 x Forklifts
- 1 x Roadsweeper
- 1 x Teleporter
- 1 x Hook Loader
- 2 x OCC Screens
- 6 x Nerwscreens
- 1 x Eddy Current
- 2 x Multi Wave
- 1 x Fibre sort
- 1 x Perforator
- 2 x Magnets
- 3 x Aladdin
- 4 x Walking Floor Bunkers
- 1 x Single Ram Baler
- 1 x Twin Ram Baler
- 2 x Manual Balers

There is sufficient back up within the group if the shovel, forklifts, hook loader or the teleporter break down.

### **2.6 Progress report on proposals developed to minimise water demand**

Water usage is minimised on site due to the nature of the materials handled. Therefore there is no requirement to reduce water usage.

### **2.7 PRTR Emission.**

IPR's PRTR emission return is provided in Appendix D.

**3.0 ENVIRONMENTAL OBJECTIVES AND TARGETS.**

REVIEW OF ENVIRONMENTAL OBJECTIVES AND TARGETS 2012

No.	Aspects	Objective & Target	Method of Achievement	Responsibility of	Status
1	Waste Management	Ensure the most efficient and environmentally sustainable management of material entering the MRF	Promote Recycling in-house within the MRF site offices	EHS Manager /Facility Manager	On-going
			Carry out waste characterisation surveys monthly – to include quarterly residual waste characterisation survey	EHS Manager	On-going
2	Compliance with the facility Waste Licence	Operate the facility in accordance with the Conditions of the Waste Licence and promote continual environmental improvement	Review training schedule of each staff member and identify training needs.	EHS Manager	On going
			Continue programme of regular inspections to include storm water sampling.	EHS Manager	On-going
			Continue to maintain the appropriate records at the facility in accordance with Condition 11 of the facility Waste Licence	EHS Manager	On-going
3	Water/Oil	Prevent surface water contamination	Ensure all gullies are fitted with wire mesh.	EHS Manager	Complete
			Ensure all gullies are maintained and regularly cleaned	EHS Manager	On-going
			Increase frequency of visit of roadsweeper from once per day to twice per week day.	EHS Manager /Facility Manager	Complete

4	Traffic Management	Achieve organised, efficient and safe movement of cars, trucks and machinery on site minimising noise and emissions	Review site traffic management plan.	H&S Manger	Complete
5	Resource Use and Energy Efficiency	Identify opportunities for energy use reduction and efficiency.	Identify where energy savings can be made.	EHS Manager	On-going
			Installation of non-concussive push button taps so as to reduce wastage.	EHS Manager /Facility Manager	Complete
6	Public Relations	Minimisation of Complaints	Effectively deal with complaints	EHS Manager	On-going
			Maintain a high standard of housekeeping practises at the facility to minimise the number of complaints.	EHS Manager	On-going
7	Emergencies	To control any emergency that may arise in the facility.	Review emergency response procedure and train all personnel.	EHS Manager	Complete
8	Material quality	Ensure that all containers leaving the site have been loaded accordingly and that the material therein conforms to specified quality standards.	Retrain forklift drivers on appropriate picture taking as per TFS Regulations.	Facility Manager	Postponed
			Install additional picking platforms to remove plastic film from the mixed paper line.	Facility Manager	Complete

### Environmental Objectives and Targets for 2013

No	Aspects	Objective & Target	Method of achievement	Responsibility	Due
1	Waste Management	Ensure the most efficient and environmentally sustainable management of material entering the MRF	Promote Recycling in-house within the MRF site offices	EHS Manager /Facility Manager	On-going
2	Compliance with the facility Waste Licence	Operate the facility in accordance with the Conditions of the Waste Licence and promote continual environmental improvement	Review training schedule of each staff member and identify training needs including SOP's.	EHS Manager	On-going
			Continue programme of regular inspections to include storm water sampling.	EHS Manager	On-going
			Continue to maintain the appropriate records at the facility in accordance with Condition 11 of the facility Waste Licence	EHS Manager	On-going
3	Water/Oil	Prevent surface water contamination	Ensure that all gullies are maintained and regularly cleaned.	EHS Manager	On-going
			Pipe and Bund integrity testing to be carried out.	EHS Manager	May - 2013



4	Resource use and energy efficiency.	Assess and review the resource & energy consumption at the facility. Identify areas for improvement.	Carry out an energy audit in the facility.	EHS Manager	July – 2013
5	Material Quality	Ensure that all containers leaving the site have been loaded accordingly and that the material therein conforms to specified quality standards.	Retrain forklift drivers on appropriate picture taking as per TFS Regulations.	Facility Manager	April – 2013
			Clean all light bulbs and covers in so there is sufficient lighting for personnel to assess incoming waste.	EHS Manager	June - 2013
6	Traffic Management	Achieve organised, efficient and safe movement of cars, trucks and machinery on site minimising noise and emissions.	Reapply site road markings.	EHS Manager /Facility Manager.	July - 2013
7	Public Relations	Minimisation of Complaints.	Effectively deal with complaints	EHS Manager	On-going
			Maintain a high standard of housekeeping practises at the facility to minimise the number of complaints.	EHS Manager	On-going
8	Public Awareness	To educate the public in the importance of recycling and the environment.	Presentations will be provided in the facility for all types of groups. The presentation will set out to educate people about the work carried out on site and the importance of recycling for the environment.	EHS Manager	On-going

### **3.1 Summary of Reported Incidents and Complaints**

#### **3.1.1 Reported Incidents Summary**

There was one environmental incident in total experienced during the reporting period 16<sup>th</sup> January 2012 to December 2012.

On October the 24<sup>th</sup> there was an uncontrolled release that was contained within the building. Just after the machinery was started up in the morning at 7:10 am an odour along with a respiratory irritant was noticed at the news screens which are located on the upper level of the facility. The facility was evacuated immediately and the machinery was shut down. An Garda Siochana carried out air sampling at approximately 12:30 pm and determined that no gases remained in the building. The line was turned to examine the material on the conveyor belts and baled material was reopened but no container was found that would have emitted the irritant. It is understood that the irritant may have been pepper-spray due to the symptoms shown by some staff members. Although some staff members were taken to hospital on the day of the incident nobody suffered any illness due to the exposure. The EPA was informed of the incident and were in attendance until approximately 2:30pm on the 24<sup>th</sup> October.

#### **3.1.2 Complaints**

There were no complaints during the reporting period 16<sup>th</sup> January to December 2012.

### **3.2 Review of Nuisance Controls**

#### **3.2.1 Odour**

There is minimal risk of odour nuisance due to the nature of the waste accepted at the facility. However, IPR's in house roadsweeper cleans the concreted yard routinely throughout the day. Material is turned over in a timely fashion.

#### **3.2.2 Noise**

The monitoring results showed that noise is not a nuisance.

### 3.2.3 Vermin

A file on vermin control is maintained in the office. A sub-contractor is used to control any vermin on site.

### 3.2.4 Flies

Good housekeeping practices are used to prevent fly infestations. Fly Spraying is conducted inside the facility during the summer months on a weekly / bi-weekly basis by a sub-contractor.

### 3.2.5 Birds

In order to avoid having birds as a nuisance, litter control is practised at all times, this includes regular litter patrols. Birds are not attracted, due to the nature of the material handled on site.

### 3.2.6 Litter

A designated member of staff carries out litter inspections of the facility regularly and gathers any litter deposited. The yard is kept clean using a road sweeper

## **4.0 Development of Procedures on Site**

The Environmental Management System has been developed and includes the following Standard Operating Procedure;

- Corrective Action;
- Daily Site Inspections;
- Nuisance Management;
- Emergency Response;
- Unacceptable Waste;
- Communications Programme;
- Storage of Fuels and Oils;

- Training and Awareness;
- Environmental Complaints;

A Daily Site Inspection Sheet has been developed to record any potential nuisance on or points to note.

### **5.0 Pollution Emission Register**

After consulting the PERL list IPR MRF are not using any substance that is listed at present.

### **6.0 Report on Programme for Public Information**

IPR have a shared website with their sister company Panda. The website was recently re-developed; one of the features is an Environmental page where the following can be downloaded,

- Facility licences (W0140-03, W0261-01, W0263-01, W0039-02, **W0238-01**)
- Multi-regional Waste collection permit (WCP-DC-09-1188-01),
- Environmental Policy,

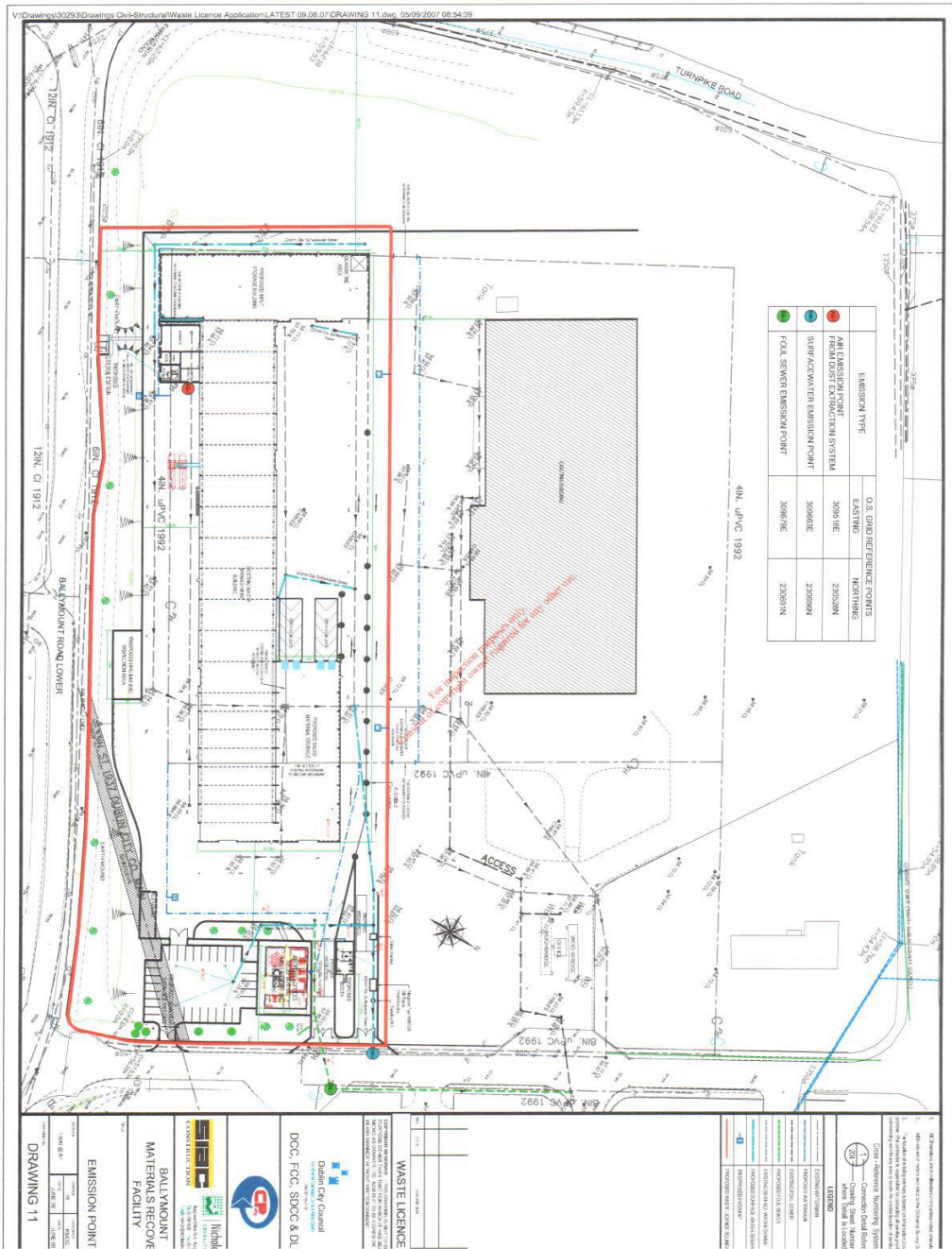
Recycling certificates are issued to customers, on request, so that they can determine their recycling on a monthly basis.

During the reporting period there were no requests from members of the public to inspect any Environmental Records.

The information in the Annual Environmental Report is true and accurate representation of the activities conducted by IPR in 2012.

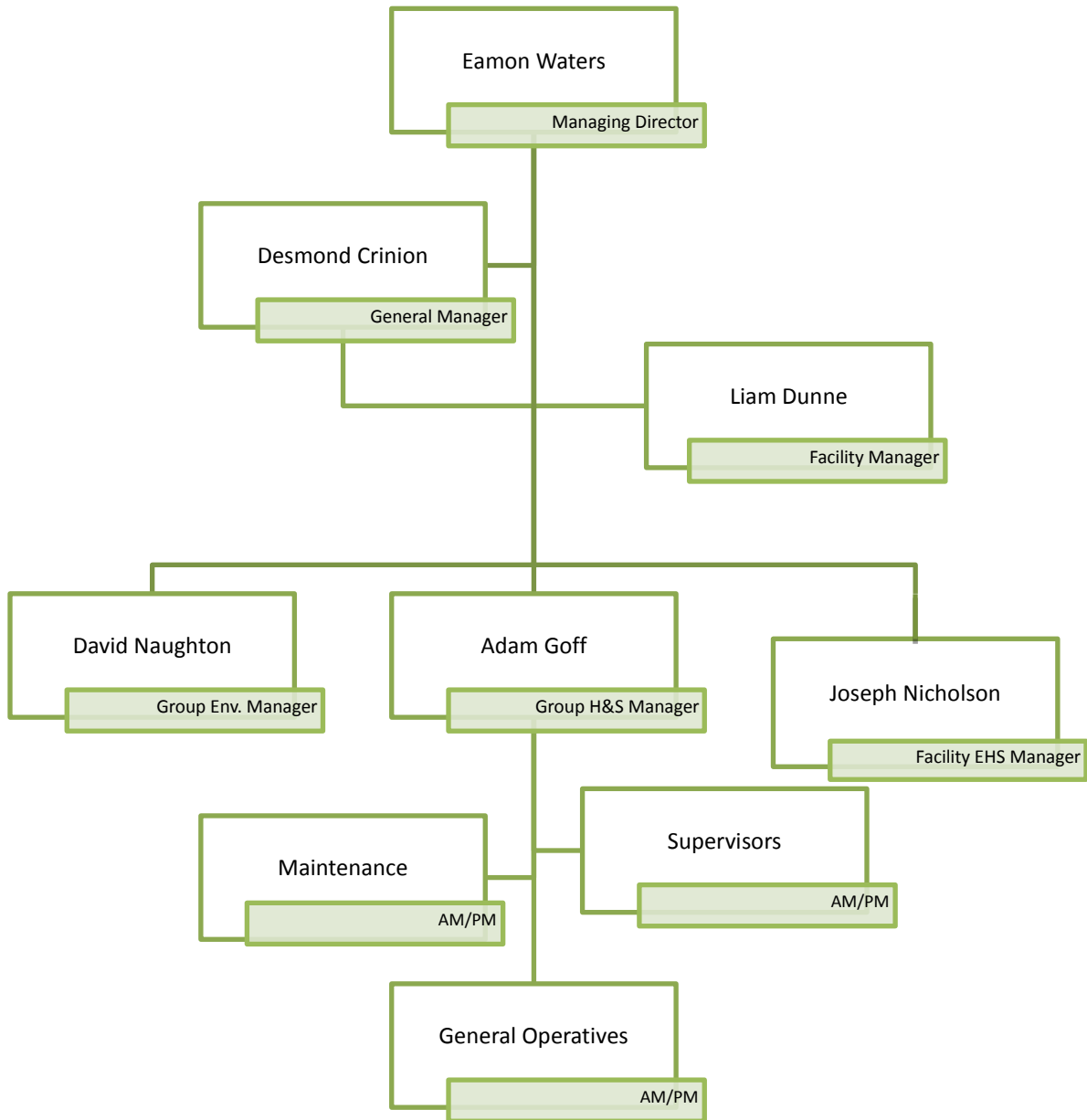
# Appendix A

## Site Layout



## Appendix B

### Organisational Structure



## Appendix C

### Financial Statement



Fagan Lynch Donnellan  
Chartered Accountants & Registered Auditors

Our Ref: VL/NMcK

6<sup>th</sup> March 2013

Environmental Protection Agency,  
McCumiskey House,  
Richview,  
Clonskeagh Road,  
Dublin 14.

**Re: Irish Packaging Recycling Limited**

Dear Sir,

We act as Auditors and Taxation Agents for the above and have acted in this capacity for the past 6 years.

We wish to confirm as follows:

1. Statutory Accounts have been filed for all years up to 31.12.2011 with the Companies Office.  
Accounts and Tax Returns have also been filed with Inspector of Taxes for all years to 31<sup>st</sup> December 2011.
2. The Company trades profitably and is on a very sound financial footing.

If you have any queries, please do not hesitate to contact us.

Yours faithfully,

  
FAGAN LYNCH DONNELLAN

Newbridge House, Athlumney, Navan, Co. Meath  
Tel: (046) 9033700 Fax: (046) 9039141 e-mail: info@fd.ie www.fd.ie

John Fagan FCA Vincent Lynch FCA Mark McCartney FCCA

Registered to carry on audit work and authorised to carry on investment business by the Institute of Chartered Accountants in Ireland (ICAI).  
Chartered Accountants Ireland is the operating name of ICAI.



# Appendix D

## PRTR Emissions

[ PRTR# : W0238 | Facility Name : Ballymount MRF (Merrywell) | Filename : Copy of Waste Collection Permits Register - Permits Issued.xls | Return Year : 2012 ]



[Guidance to completing the PRTR workbook](#)

## AER Returns Workbook

Version 1.1.15

<b>REFERENCE YEAR</b>	2012
-----------------------	------

### 1. FACILITY IDENTIFICATION

Parent Company Name	Dublin City Council
Facility Name	Ballymount MRF (Merrywell)
PRTR Identification Number	W0238
Licence Number	W0238-01

#### Waste or IPPC Classes of Activity

N	class name
4.2	Recycling or reclamation of organic substances which are not used as solvents (including composting and other biological transformation processes).
3.12	Repackaging prior to submission to any activity referred to in a preceding paragraph of this Schedule.
3.13	Storage prior to submission to any activity referred to in a preceding paragraph of this Schedule, other than temporary storage, pending collection, on the premises where the waste concerned is produced.
4.13	Storage of waste intended for submission to any activity referred to in a preceding paragraph of this Schedule, other than temporary storage, pending collection, on the premises where such waste is produced.
4.3	Recycling or reclamation of metals and metal compounds.
4.4	Recycling or reclamation of other inorganic materials.
Address 1	Merrywell Industrial Estate
Address 2	Ballymount Road Lower
Address 3	Ballymount
Address 4	Dublin 12
	Dublin
Country	Ireland
Coordinates of Location	-6.35671 53.3145
River Basin District	IEEA
NACE Code	2314
Main Economic Activity	Manufacture of glass fibres
AER Returns Contact Name	Joseph Nicholson
AER Returns Contact Email Address	joe.nicholson@ipr.ie
AER Returns Contact Position	EHS Manager
AER Returns Contact Telephone Number	01 4602011
AER Returns Contact Mobile Phone Number	086 022 6109
AER Returns Contact Fax Number	01 4602210
Production Volume	0.0
Production Volume Units	
Number of Installations	0
Number of Operating Hours in Year	0
Number of Employees	80
User Feedback/Comments	
Web Address	

### 2. PRTR CLASS ACTIVITIES

Activity Number	Activity Name
50.1	General
5(c)	Installations for the disposal of non-hazardous waste
50.1	General

### 3. SOLVENTS REGULATIONS (S.I. No. 543 of 2002)

Is it applicable?	No
Have you been granted an exemption?	No
If applicable which activity class applies (as per Schedule 2 of the regulations)?	
Is the reduction scheme compliance route being used?	

### 4. WASTE IMPORTED/ACCEPTED ONTO SITE

[Guidance on waste imported/accepted onto site](#)

Do you import/accept waste onto your site for on-site treatment (either recovery or disposal activities)?	
---	--

This question is only applicable if you are an IPPC or Quarry site



4.1 RELEASES TO AIR

[Link to previous years emissions data](#)

| PRTR#: W0238 | Facility Name : Ballymount MRF (Merrywell) | Filename : Copy of Waste Collection Permits Register - Permits Issued.xls | Return Year : 2012 |

26/03/2013 10:29

SECTION A : SECTOR SPECIFIC PRTR POLLUTANTS

POLLUTANT		RELEASERS TO AIR			Please enter all quantities in this section in KGs				
No. Annex II	Name	M/C/E	METHOD		ADD EMISSION POINT	QUANTITY			
			Method Code	Designation or Description	Emission Point 1	T (Total) KG/Year	A (Accidental) KG/Year	F (Fugitive) KG/Year	
						0.0	0.0	0.0	0.0

ADD NEW ROW | DELETE ROW \* \* Select a row by double-clicking on the Pollutant Name (Column B) then click the delete button

SECTION B : REMAINING PRTR POLLUTANTS

POLLUTANT		RELEASERS TO AIR			Please enter all quantities in this section in KGs				
No. Annex II	Name	M/C/E	METHOD		ADD EMISSION POINT	QUANTITY			
			Method Code	Designation or Description	Emission Point 1	T (Total) KG/Year	A (Accidental) KG/Year	F (Fugitive) KG/Year	
						0.0	0.0	0.0	0.0

ADD NEW ROW | DELETE ROW \* \* Select a row by double-clicking on the Pollutant Name (Column B) then click the delete button

SECTION C : REMAINING POLLUTANT EMISSIONS (As required in your Licence)

POLLUTANT		RELEASERS TO AIR			Please enter all quantities in this section in KGs				
Pollutant No.	Name	M/C/E	METHOD		ADD EMISSION POINT	QUANTITY			
			Method Code	Designation or Description	Emission Point 1	T (Total) KG/Year	A (Accidental) KG/Year	F (Fugitive) KG/Year	
						0.0	0.0	0.0	0.0

ADD NEW ROW | DELETE ROW \* \* Select a row by double-clicking on the Pollutant Name (Column B) then click the delete button

Additional Data Requested from Landfill operators

For the purposes of the National Inventory on Greenhouse Gases, landfill operators are requested to provide summary data on landfill gas (Methane) flared or utilised on their facilities to accompany the figures for total methane generated. Operators should only report their Net methane (CH4) emission to the environment under T(total) KG/yr for Section A: Sector specific PRTR pollutants above. Please complete the table below:

Landfill:

Please enter summary data on the quantities of methane flared and / or utilised

Ballymount MRF (Merrywell)

T (Total) kg/Year	M/C/E	Method Used		Facility Total Capacity m3 per hour
		Method Code	Designation or Description	
Total estimated methane generation (as per site model)	0.0			N/A
Methane flared	0.0			0.0 (Total Flaring Capacity)
Methane utilised in engine/s	0.0			0.0 (Total Utilising Capacity)
Net methane emission (as reported in Section A above)	0.0			N/A

4.2 RELEASES TO WATERS

[Link to previous years emissions data](#)

| PRTR#: W0238 | Facility Name : Ballymount MRF (Merrywell) | Filename : Copy of Waste Collection Permits Register - Permits Issued.xls | Return Year : 2012

26/03/2013 10:29

SECTION A : SECTOR SPECIFIC PRTR POLLUTANTS

Data on ambient monitoring of storm/surface water or groundwater, conducted as part of your licence requirements, should NOT be submitted under AER / PRTF

RELEASES TO WATERS					Please enter all quantities in this section in KGs			
POLLUTANT		METHOD USED			ADD EMISSION POINT	QUANTITY		
No. Annex II	Name	M/C/E	Method Code	Designation or Description	Emission Point 1	T (Total) KG/Year	A (Accidental) KG/Year	F (Fugitive) KG/Year
						0.0	0.0	0.0

ADD NEW ROW | DELETE ROW \* \* Select a row by double-clicking on the Pollutant Name (Column B) then click the delete button

SECTION B : REMAINING PRTR POLLUTANTS

RELEASES TO WATERS					Please enter all quantities in this section in KGs			
POLLUTANT		METHOD USED			ADD EMISSION POINT	QUANTITY		
No. Annex II	Name	M/C/E	Method Code	Designation or Description	Emission Point 1	T (Total) KG/Year	A (Accidental) KG/Year	F (Fugitive) KG/Year
						0.0	0.0	0.0

ADD NEW ROW | DELETE ROW \* \* Select a row by double-clicking on the Pollutant Name (Column B) then click the delete button

SECTION C : REMAINING POLLUTANT EMISSIONS (as required in your Licence)

RELEASES TO WATERS					Please enter all quantities in this section in KGs			
POLLUTANT		METHOD USED			ADD EMISSION POINT	QUANTITY		
Pollutant No.	Name	M/C/E	Method Code	Designation or Description	Emission Point 1	T (Total) KG/Year	A (Accidental) KG/Year	F (Fugitive) KG/Year
						0.0	0.0	0.0

4.3 RELEASES TO WASTEWATER OR SEWER

[Link to previous years emissions data](#)

| PRTR#: W0238 | Facility Name : Ballymount MRF (Merrywell) | Filename : Copy of Waste Cole

26/03/2013 10:29

SECTION A : PRTR POLLUTANTS

OFFSITE TRANSFER OF POLLUTANTS DESTINED FOR WASTE-WATER TREATMENT OR SEWER					Please enter all quantities in this section in KGs			
POLLUTANT		METHOD			ADD EMISSION POINT	QUANTITY		
No. Annex II	Name	M/C/E	Method Code	Designation or Description	Emission Point 1	T (Total) KG/Year	A (Accidental) KG/Year	F (Fugitive) KG/Year
						0.0	0.0	0.0

ADD NEW ROW | DELETE ROW \* \* Select a row by double-clicking on the Pollutant Name (Column B) then click the delete button

SECTION B : REMAINING POLLUTANT EMISSIONS (as required in your Licence)

OFFSITE TRANSFER OF POLLUTANTS DESTINED FOR WASTE-WATER TREATMENT OR SEWER					Please enter all quantities in this section in KGs			
POLLUTANT		METHOD			ADD EMISSION POINT	QUANTITY		
Pollutant No.	Name	M/C/E	Method Code	Designation or Description	Emission Point 1	T (Total) KG/Year	A (Accidental) KG/Year	F (Fugitive) KG/Year
						0.0	0.0	0.0

4.4 RELEASES TO LAND

[Link to previous years emissions data](#)

| PRTR#: W0238 | Facility Name: Ballymount MRF (Merrywell) | Filename: Copy of Waste Collection Permits Register - Permits Issued.xls | R

26/03/2013 10:29

SECTION A : PRTR POLLUTANTS

RELEASES TO LAND					Please enter all quantities in this section in KGs		
POLLUTANT		METHOD			ADD EMISSION POINT	QUANTITY	
No. Annex II	Name	M/C/E	Method Used		Emission Point 1	T (Total) KG/Year	A (Accidental) KG/Year
			Method Code	Designation or Description			
					0.0	0.0	0.0

\* Select a row by double-clicking on the Pollutant Name (Column B) then click the delete button

SECTION B : REMAINING POLLUTANT EMISSIONS (as required in your Licence)

RELEASES TO LAND					Please enter all quantities in this section in KGs		
POLLUTANT		METHOD			ADD EMISSION POINT	QUANTITY	
Pollutant No.	Name	M/C/E	Method Used		Emission Point 1	T (Total) KG/Year	A (Accidental) KG/Year
			Method Code	Designation or Description			
					0.0	0.0	0.0

5. ONSITE TREATMENT & OFFSITE TRANSFERS OF WASTE | PRTR#: W0238 | Facility Name : Ballymount MRF (Merrywell) | Filename : PRTR W0238\_2012.xls | Return Year : 2012 |

Please enter all quantities on this sheet in Tonnes

Transfer Destination	European Waste Code	Hazardous	Quantity (Tonnes per Year)	Description of Waste	Waste Treatment Operation	Method Used		Location of Treatment	Haz Waste : Name and Licence/Permit No of Next Destination Facility	Haz Waste : Address of Next Destination Facility
						M/C/E	Method Used		Non Haz Waste: Name and Licence/Permit No of Recover/Disposer	Non Haz Waste: Address of Recover/Disposer
Within the Country	15 01 02	No	214.68	Plastic Packaging	R12	M	Weighed	Offsite in Ireland	Shabra Recycling Ltd.,WFP-NN-08-0022-01	Killycard Ind. Est. Bree, Castleblaney Co. Monaghan, Ireland
To Other Countries	15 01 02	No	1151.43	Plastic Packaging	R12	M	Weighed	Abroad	WRC Recycling ,WMX/W/26453 and WMX/W/26454	Floors Street,Johnstone ,Renfrewshire Glasgow,PA5 8QS, United Kingdom Tuam Business Park, Weir Road, Tuam Co. Galway, Ireland scilly kipper house, kinsale, co.cork, ireland
Within the Country	15 01 02	No	55.4	Plastic Packaging	R12	M	Weighed	Offsite in Ireland	WERS, CP608	Swaffhem road,47, Burwell Cambridgeshire, CB25 2YY, United Kingdom
To Other Countries	15 01 02	No	590.18	Plastic Packaging	R12	M	Weighed	Abroad	Materia Environment Ltd, Broker	OAN, United Kingdom Wilslov road, Adamson house Towers business park, Manchester, M20
To Other Countries	15 01 02	No	21.9	Plastic Packaging	R12	M	Weighed	Abroad	Boost Recycling Ltd. UK, Broker	Haggardstown, Claremont Business park, Dundalk, Co. Louth, Ireland
To Other Countries	15 01 02	No	504.26	Plastic Packaging	R12	M	Weighed	Abroad	MLM Ltd., Broker Leinster	Newtown, Rathangan, Kildare , Co. Kildare, Ireland
Within the Country	15 01 02	No	78.0	Plastic Packaging	R12	M	Weighed	Offsite in Ireland	Environmentals, WFP-LH-11-002-01	11 Porthill road, Mountnorris, Armagh, BT60 2 TY, United Kingdom
Within the Country	15 01 02	No	20.8	Plastic Packaging	R12	M	Weighed	Offsite in Ireland	Recyclenet Ireland Ltd., Broker	Unit 2 Britannia Business Park Point Pleasant Industrial Estate, Wallsend Tyne and
To Other Countries	15 01 02	No	94.42	Plastic Packaging	R12	M	Weighed	Abroad	Greenway Ireland Ltd., Broker	Wear, Wallsend, NE 28 GHA, United Kingdom Suite 5, 30 Lancaster Gate, London, W2
To Other Countries	15 01 02	No	723.82	Plastic Packaging	R12	M	Weighed	Abroad	Alternative Waste Solutions Ltd., Broker	3LP, United Kingdom 96 Toft Hill, Bishop Auckland, Durham, DL14
To Other Countries	15 01 02	No	47.52	Plastic Packaging	R12	M	Weighed	Abroad	Asia Global Trade, Broker	OJA, United Kingdom Brook House, Hambleton Road, Egleton Nr Oakham Rutland, LE15 8AE, United Kingdom
To Other Countries	15 01 02	No	333.88	plastic packaging	R12	M	Weighed	Abroad	GFSL Ltd, Broker	Weir road, Tuam, Galway, Co. Galway, Ireland
To Other Countries	15 01 02	No	42.06	plastic packaging	R12	M	Weighed	Abroad	J&A Young Ltd., Boker	Rushden road, Sharnbrook, Bedfordshire, MK44 1ND, United Kingdom
To Other Countries	15 01 02	No	20.0	plastic packaging	R12	M	Weighed	Abroad	JFC Manufacturing Co Ltd., Broker	Unit 4F Fingal Bay Business
To Other Countries	15 01 02	No	20.46	plastic packaging	R12	M	Weighed	Abroad	Monoworld Ltd., Broker	Park, Balbriggan, Dublin, Co. Dublin, Ireland
To Other Countries	15 01 02	No	1.12	plastic packaging	R12	M	Weighed	Abroad	Pacon Waste and Recycling Ltd., WFP-FG-10-004-01	

To Other Countries	15 01 04	No	49.6 metallic packaging	R12	M	Weighed	Abroad	Novelis Recycling Ltd, Broker	Latchford Locks Works ,Warington, Cheshire ,WA4 1NN, United Kingdom
To Other Countries	15 01 04	No	74.02 metallic packaging	R12	M	Weighed	Abroad	Monoworld Ltd., Broker	Rushden road, Sharnbrook, Bedfordshire, MK44 1ND, United Kingdom
To Other Countries	15 01 04	No	88.52 metallic packaging	R12	M	Weighed	Abroad	GFSL Ltd, Broker	96 Toft Hill, Bishop Auckland, Durham, DL14 0JA, United Kingdom
To Other Countries	15 01 04	No	66.8 metallic packaging	R12	M	Weighed	Abroad	Aganail Ltd., IRE/AG117/10	Unit 9 Ressfield, 50 Rosemount Business Park, Ballycoolin Dublin 11., Ireland
Within the Country	15 01 04	No	1277.68 metallic packaging	R12	M	Weighed	Offsite in Ireland	Wilton Waste Recycling Ltd., WFP CN-10-000-5-01(1)	Crosserlough, Ballyjamesduff ,Co. Cavan., Ireland
Within the Country	15 01 04	No	136.86 metallic packaging	R12	M	Weighed	Offsite in Ireland	MSM Recycling, WFP-TN-11-0003-02	Annagh, Birr, Co. Offaly., Ireland
To Other Countries	15 01 04	No	177.8 metallic packaging	R12	M	Weighed	Abroad	WRC Recycling ,WMX/W/26453 and WMX/W/26454	Floors Street, Johnstone ,Renfrewshire Glasgow, PA5 8QS, United Kingdom
Within the Country	15 01 07	No	5529.84 glass packaging	R12	M	Weighed	Offsite in Ireland	Panda Waste Services, W0140-03	Beuparc Business Park, Navan, Co. Meath., Ireland
To Other Countries	20 01 01	No	587.88 mixed paper	R12	M	Weighed	Abroad	Highlander Recycling, Broker	Linwood Avenue, East Kilbridge, Glasgow, G74 5NE, United Kingdom
To Other Countries	20 01 01	No	978.34 mixed paper	R12	M	Weighed	Abroad	Aganail Ltd., IRE/AG117/10	Unit 9 Ressfield, 50 Rosemount Business Park, Ballycoolin Dublin 11., Ireland
Within the Country	20 01 10	No	11.28 clothes	R12	M	Weighed	Offsite in Ireland	Aganail Ltd., IRE/AG117/10	Rosemount Business Park, Ballycoolin Dublin 11., Ireland
Within the Country	20 01 10	No	1.92 clothes	R12	M	Weighed	Offsite in Ireland	Textile Recycling Ltd., WCP-DC-08-1225-01	504 A Grants Drive, Greenouge Business Park, Greenouge Industrial Estate, Dublin 24, Ireland
Within the Country	20 01 10	No	23.78 clothes	R12	M	Weighed	Offsite in Ireland	Panda Waste Services, W0140-03	Beuparc Business Park, Navan, Co. Meath., Ireland
Within the Country	20 01 10	No	14.14 clothes	R12	M	Weighed	Offsite in Ireland	Rehab Recycling Ltd., WCP-DC-10-1257-01	Rehab Building, Kylemore road, Ballyfermot, Dublin 10, Ireland
Within the Country	20 03 01	No	72.12 mixed municipal waste	R12	M	Weighed	Offsite in Ireland	Mr. Binman, NWCP0-12-11056-01	Luddenmore Grange ,Killmallock, Co. Limerick., Ireland
Within the Country	20 03 01	No	29.04 mixed municipal waste	R12	M	Weighed	Offsite in Ireland	Mulleady's Ltd., W0169-01	Cloonagh, Drumlish, Co. Longford., Ireland
Within the Country	20 03 01	No	1126.9 Mixed dry recycables	R12	M	Weighed	Offsite in Ireland	Killamey Waste Ltd., W0217-02	Aughacurren, Killarney ,Co. Kerry ,., Ireland
Within the Country	20 03 01	No	1244.16 Mixed dry recycables	R12	M	Weighed	Offsite in Ireland	Panda Waste Services, W0140-03	Beuparc Business Park, Navan, Co. Meath., Ireland
Within the Country	20 03 01	No	467.3 Mixed dry recycables	R12	M	Weighed	Offsite in Ireland	Dillon Waste & Recycling ,WFP-KY-10-001	The Kerries, Tralee, Co. Kerry., Ireland

Within the Country	20 03 01	No	703.18 mixed municipal waste	R12	M	Weighed	Offsite in Ireland	Oxigen Environmental Ltd.,W0208-01	Merrywell Industrial Park,Ballymount road,Dublin 22,..Ireland
Within the Country	20 03 01	No	1213.88 mixed municipal waste	R12	M	Weighed	Offsite in Ireland	Thorntons Recycling (MDR) Facility,WFP-DC-10-0021-02	Unit 51 Henry road,Parkwest Business Park,Dublin 12,..Ireland
Within the Country	20 03 01	No	12.41 mixed municipal waste	R12	M	Weighed	Offsite in Ireland	Greyhound Recycling,W205-01	Crag Avenue,Clondalkin Industrial Estate,Dublin 22,..Ireland
Within the Country	20 03 01	No	1039.96 mixed municipal waste	R12	M	Weighed	Offsite in Ireland	Rehab Recycle,WFP-DS10-0008-03	Unit 77 Broomhill Road,Tallaght,Dublin 24,..Ireland
Within the Country	20 03 01	No	7823.9 mixed municipal waste	R12	M	Weighed	Abroad	Re gen Waste Ltd.,WCP/MH/09/0014-01	Shepards drive,Carbane Industrial Estate,Newry,..Co.Down
Within the Country	20 03 01	No	735.71 mixed municipal waste	R12	M	Weighed	Offsite in Ireland	Panda Waste Services,W0039-02	BT356 jQ,United Kingdom
To Other Countries	15 01 01	No	165.8 paper and cardboard packaging	R12	M	Weighed	Abroad	Dongguan Huang Chong Jinzhou Paper Co Ltd	Ballymount Cross,Tallaght,Dublin 24,..Ireland
To Other Countries	15 01 01	No	2666.22 paper and cardboard packaging	R12	M	Weighed	Abroad	Huangchong Village Zhongtang Town Dongguan City Guangdong China,..	..Huangchong Village Zhongtang Town,Dongguan City,China
To Other Countries	15 01 01	No	732.8 paper and cardboard packaging	R12	M	Weighed	Abroad	Failand Paper Services Ltd,Broker	11 Triangle South,Clifton,Bristol,BS81E Y,United Kingdom
To Other Countries	15 01 01	No	5622.85 paper and cardboard packaging	R12	M	Weighed	Abroad	Mark Lydon Papers,Broker	12,The Triangle,Nottingham,NG2 1AE,United Kingdom
To Other Countries	15 01 01	No	251.78 paper and cardboard packaging	R12	M	Weighed	Abroad	MLM Ltd.,Broker	Wilmslow road,Adamson house Towers business park ,Manchester,M20 2YY,United Kingdom
To Other Countries	15 01 01	No	25.5 paper and cardboard packaging	R12	M	Weighed	Abroad	Monoworld Ltd.,Broker	Rushden road,Sharnbrook,Bedfordshire,MK44 1ND,United Kingdom
To Other Countries	15 01 01	No	231.68 paper and cardboard packaging	R12	M	Weighed	Abroad	Sca Recycling,Broker	543 Hythe Lane,Larkfield Aylesford,Kent,M320 7PE,United Kingdom
To Other Countries	15 01 01	No	286.72 paper and cardboard packaging	R12	M	Weighed	Abroad	Wuxi Longchem Paper Co Ltd,..	43 Zhongxing west road,Loushe town Huishan District,Wuxi Longchem Paper Co Ltd,Jiangsu,China
To Other Countries	15 01 01	No	484.22 paper and cardboard packaging	R12	M	Weighed	Abroad	Xiamen Jiuli Paper imp and exp. Co Ltd,..	Unit 2501-2503 Office Building,Paragon Center,no.1 Lianyue road,Xiamen Fujian,China
Within the Country	15 01 01	No	414.42 paper and cardboard packaging	R12	M	Weighed	Offsite in Ireland	Zhongshan Yongfa Paper Industries Co. Ltd.,	Zhongshan Sugar Factory,Huangpu Town,Zhongshan City,..China
Within the Country	15 01 01	No	581.26 paper and cardboard packaging	R12	M	Weighed	Offsite in Ireland	Dillon Waste & Recycling ,WFP-KY-10-001	The Keries,Tralee,Co. Kerry,..Ireland
To Other Countries	15 01 01	No	3573.74 paper and cardboard packaging	R12	M	Weighed	Abroad	Killarney Waste Ltd. ,W0217-02	Aughacurren,Killarney ,Co. Kerry,..Ireland
To Other Countries	15 01 01	No	2203.04 paper and cardboard packaging	R12	M	Weighed	Abroad	Marwin Environmental Trading Ltd.,Broker	7 Glyntown Heights,Glanmire,Co.Cork,..Ireland
To Other Countries	15 01 01	No	4307.46 paper and cardboard packaging	R12	M	Weighed	Abroad	Boost Recycling Ltd. UK,Broker	Swaffhem road,47,Burwell Cambridgeshire,CB25 0AN,United Kingdom
To Other Countries	15 01 01	No	11273.28 paper and cardboard packaging	R12	M	Weighed	Abroad	Peute Papier Recycling ,Broker	Baanhoekweg 4,3313 La Dordrecht,..,Netherlands
To Other Countries	15 01 01	No	104.24 paper and cardboard packaging	R12	M	Weighed	Abroad	Aganail Ltd.,Broker	88 Cherrywood Cresent,Clondalkin,Dublin 22,..Ireland
To Other Countries	15 01 01	No	paper and cardboard packaging	R12	M	Weighed	Abroad	Highlander Recycling,Broker	Linwood Avenue,East Kilbridge,Glasgow,G74 5NE,United Kingdom
To Other Countries	15 01 01	No	paper and cardboard packaging	R12	M	Weighed	Abroad	WRC Recycling ,Broker	Auchans Farm,Johnstone ,Renfrewshire Glasgow,PA6 7EE,United Kingdom