



KILDARE COUNTY COUNCIL

Comhairle Chontae Chill Dara

ROBERSTOWN WASTEWATER AGGLOMERATION

ANNUAL ENVIRONMENTAL REPORT

2012-2013

LICENCE D0234-01

Table of Contents

Section	1.	Executive Summary and Introduction to the 2012 AER
	1.1	Summary report on 2012
Section	2.	Monitoring Reports Summary
	2.1	Summary report on monthly influent monitoring
	2.2	Discharges from the agglomeration
	2.3	Treatment Efficiency Report
	2.4	Treatment Capacity Report
	2.5	Ambient monitoring summary
	2.6	Data collection and reporting requirements under the Urban Waste Water Treatment Directive
	2.7	Pollutant Release and Transfer Register (PRTR) - report for previous year
Section	3	Operational Reports Summary
	3.1	Complaints Summary
	3.2	Reported Incidents Summary
Section	4.	Infrastructural Assessments and Programme of Improvements
	4.1	Storm water overflow identification and inspection report
	4.2	Report on progress made and proposals being developed to meet the improvement programme requirements.
Section	5.	Environmental Liability and Financial Provisions
	5.1	Statement of Measures
	5.2	Environmental Liabilities Risk Assessment
Section	6.	Licence Specific Reports
	6.1	Priority Substances Assessment
	6.2	Drinking Water Abstraction Point Risk Assessment
	6.3	Shellfish Impact Assessment Report
	6.4	Toxicity / Leachate Management
	6.5	Toxicity of the Final Effluent Report
	6.6	Pearl Mussel Measures Report
	6.7	Habitats Impact Assessment Report
Section	7.	Appendices
	Appendix A	- Storm Water Overflow Assessment
	Appendix B	- PRTR Report
Section	8.	Certification and Sign Off

Section 1. Executive Summary and Introduction to the 2012 AER

1.1 Summary report on 2012

Robertstown is located in the north of County Kildare, approximately 13km northwest of Naas town. The treatment plant was commissioned in 2001 with a design capacity of 1000PE, a BOD design limit of 20mg/l and a suspended solids design limit of 30mg/l. The most recent PE survey was carried out in 2008 and a PE of 1043 was calculated.

The treatment plant is comprised of inlet works, oxidation ditch, phosphorous removal system, clarifier and sludge pumping station. There are two pumping stations located within the agglomeration. The Robertstown WWTP agglomeration drains by gravity.

The wastewater discharge licence for the Robertstown agglomeration was granted on February 28th 2011 under the Waste Water Discharge Regulations of 2007. This is the second AER presented to the EPA since the licence was granted. This AER includes tabular representations of monthly monitoring of influent and effluent samples and also ambient monitoring. The PRTR has been electronically submitted prior to submission of this AER.

There were no complaints recorded on our database for 2012 in relation to the Robertstown WWTP, nor were there any incidents recorded.

Also included in the AER are reports on infrastructural assessments and programme of improvements, reports on environmental liability and financial provisions and finally licence specific reports. The treatment plant discharges to the River Slate. Under the licence D0234-01, the following limits have been set for the primary discharge;

PARAMETER	EMISSION LIMIT VALUE
pH	6 – 9
cBOD	20ppm
COD	125ppm
Suspended Solids	35ppm
Ammonia (as N)	2ppm
Total Phosphorous (as P)	1.7ppm
Ortho-phosphate	0.8ppm

Overall the performance of the plant is satisfactory with no ELV exceedances in 2012.

Section 2. Monitoring Reports Summary

2.1 Summary report on monthly influent monitoring

Influent monitoring in Robertstown WWTP is carried out monthly in accordance with the licence. Table 2.1.1 below shows the annual maximum and annual mean results for BOD, COD, SS, Ammonia, Total N, Total P and Ortho P. A flow meter was installed on site in March so hydraulic loading was calculated based on averages from March to December. These results were used in the calculation of remaining treatment capacities displayed in table 2.4.

	BOD (mg/l)	COD (mg/l)	SS (mg/l)	Ammonia (mg/l)	Total N (mg/l)	Total P (mg/l)	Ortho P (mg/l)	Hydraulic Loading (m ³ /d)	Organic Loading (PE/day)
No. Of Samples	12	12	12	12	12	12	12		
Annual Max	213	747	337	45	62	7.3	6.05	270	959
Annual Mean	172	424	173	31.1	49.8	4.6	4.05	224	642

Table 2.1.1

Influent monitoring results are typical of Robertstown WWTP.

2.2 Discharges from the agglomeration

Table 2.2.1 below presents a summary of the effluent monitoring data. There was full compliance in 2012 with regard to monitoring frequency set out in Schedule B.1 and also ELV's as set out in Schedule A of the licence. All samples are 24 hour composite samples.

	BOD (mg/l)	COD (mg/l)	TSS (mg/l)	Amm onia (mg/l)	Total P (mg/l)	Ortho P (mg/l)	Comment
WWDL ELV (Schedule A)	20	125	35	2	1.7	0.8	
ELV with Condition 2 Interpretation included	40	250	87.5	2.4	2.04	0.96	
Number of sample results	12	12	12	12	12	12	Monthly composite sample
Number of sample results above WWDL ELV	0	0	0	0	0	0	No exceedances in 2012
Number of sample results above ELV with Condition 2 Interpretation included	0	0	0	0	0	0	No exceedances in 2012
Annual Mean (for parameters where a mean ELV applies)	1.75	25	2.6	0.3	0.69	0.4	
Overall Compliance (Pass/Fail)	PASS	PASS	PASS	PASS	PASS	PASS	

Table 2.2.1

Overall, the plant is performing very well with 100% compliance.

2.3 Treatment Efficiency Report

Table 2.3.1 depicted below outlines the treatment efficiency for each parameter. Overall, the percentage reduction of the influent load is satisfactory with efficiencies ranging from 77.86% to 99.05%.

	cBOD (kg/day)	COD (kg/day)	SS (kg/day)	Ammonia (kg/d)	Total N (kg/day)	Total P (kg/day)	OrthoP (kg/d)	Comment
Influent mass loading (kg/day)	37.86	96.77	36.5	5.22	11.29	1.04	0.91	
Effluent mass emission (kg/day)	0.36	5.38	0.56	0.08	2.5	0.08	0.08	
% Efficiency (% reduction of influent load)	99.05	94.44	98.47	98.47	77.86	87.50	91.21	

Table 2.3.1

2.4 Treatment Capacity Report

2.4.1 Hydraulic Treatment Capacity

Robertstown WWTP is currently unable to manage the volumetric flows to licence requirements.

2.4.2 Organic Treatment Capacity

The design P.E. of the plant is 1000. A survey carried out in 2008 yielded a P.E. of 1043. therefore the plant is operating above its organic capacity.

Hydraulic Capacity – Design / As Constructed (m3/day)	225
Hydraulic Capacity – Current loading (m3/day)	224
Hydraulic Capacity – Remaining (m3/day)	1
Organic Capacity - Design / As Constructed (PE)	1000
Organic Capacity - Current loading (PE)	1043 (as of 2008)
Organic Capacity – Remaining (PE)	0%
Will the capacity be exceeded in the next three years? (Yes / No)	Already slightly exceeded

Table 2.4.1

2.5 Ambient monitoring summary

The River Slate is monitored according to Schedule B of the licence. Analytical results for 2012 will be submitted electronically as part of the UWWR returns to the EPA.

Ambient Monitoring Point from WWDL (or as agreed with EPA)	Irish Grid Reference	EPA Feature Coding Tool code	Does assessment of the ambient monitoring results indicate that the discharge is impacting on water quality
ASW1-PU	278554.7E, 225905N	RS14S010031	No
ASW1-PD	278076E, 225792N	RS14SO10036	No

Table 2.5.1

Table 2.5.2 is a comparison of the annual mean ambient results and the EQS as sated in the European Communities Environmental Objectives (Surface Water) Regulations, SI 272 of 2009. River quality for BOD was achieved downstream of the treatment plant. Total ammonia and ortho P failed to achieve river quality standards. However, it should be noted that river quality for these two parameters were also exceeded upstream. Achieving good status for these two parameters will require a reduction in upstream concentrations before it can be achieved downstream.

Parameter	Annual Mean ASW1-PU	Annual Mean ASW1-PD	AA-EQS (mean)
BOD (mg/l)	1.3	1.3	High ≤ 1.3 Good ≤ 1.5
Total Ammonia (mg/l N)	0.17	0.17	High ≤ 0.04 Good ≤ 0.065
Ortho P (mg/l P)	0.09	0.09	High ≤ 0.025 Good ≤ 0.035

Table 2.5.2

The average dissolved oxygen concentration was 9.18mg/l upstream of the agglomeration and 9.26mg/l downstream. The frequency of D.O. monitoring was carried out in accordance with Schedule B.3 of the licence.

2.6 Data collection and reporting requirements under the Urban Waste Water Treatment Directive

The annual urban wastewater discharge for the Robertstown agglomeration will be submitted electronically on or before February 26th 2013.

2.7 Pollutant Release and Transfer Register (PRTR) - report for previous year

See Appendix B for PRTR returns workbook 2012. This data has already been uploaded to the EPA website.

Section 3 Operational Reports Summary

3.1 Complaints Summary

Kildare County Council has a documented complaints procedure in place. There were no complaints received in relation to this agglomeration for 2012.

Number	Date & Time	Nature of Complaint	Cause of Complaint	Actions taken to resolve issue	Closed (Y/N)
n/a	n/a	n/a	n/a	n/a	n/a

3.2 Reported Incidents Summary

Number of Incidents in 2012	0
Number of Incidents reported to the EPA via EDEN in 2012	0
Explanation of any discrepancies between the two numbers above	n/a

Section 4. Infrastructural Assessments and Programme of Improvements

4.1 Storm water overflow identification and inspection report

Please refer to Appendix A for detailed SWO Assessment report.

WWDL Name / Code for Storm Water Overflow	Irish Grid Reference	Included in Schedule A4 of the WWDL	Compliance with DoEHLG Criteria	No. of times activated in 2012 (No. of events)	Estimated /Measured data	Total volume discharged in 2012 (m3)	Estimated /Measured data
SW-2	278591E 225810N	Yes	Not Compliant	Unknown	Unknown	Unknown	Unknown

Is each SWO identified as non-compliant with DoEHLG Guidance included in the Programme of Improvements?	Yes
The SWO assessment includes the requirements of Schedule A3 & C3	Yes
Have the EPA been advised of any additional SWOs / changes to Schedule C3 and A4 under Condition 1.7?	N/A

4.2 Report on progress made and proposals being developed to meet the improvement programme requirements.

There is no specified improvement programme listed in Schedule C.1 and C.2 of the licence, however Kildare County Council do propose a variety of improvement works for all our Discharge Licensed agglomerations.

Due to resourcing and funding problems, it was not possible to develop a plan of Infrastructural Improvements for Robertstown WWTP in time for the submission of the 2012 AER. However, in November of 2012 Kildare County Council went through a procurement process to employ the services of a competent Consulting Engineering company to carry out detailed studies at a number of WWTP's throughout the county, with the aim of the following:

1. Recommendations regarding infrastructural improvement works required within each plant in order to improve efficiency and treatment standards, and
2. Recommendations on efficient operation and maintenance of each plant pending the delivery of upgrade works as defined in (1) above.

The project includes for the Robertstown WWTP and the completion date is May 2013. Kildare County Council hopes to roll out the recommendations of the report as quickly as possible thereafter, subject to funding and resources. A copy of this report will be included in the 2013 AER, and the report will be synopsised as per the guidance templates published by the EPA.

In addition, it is proposed through the reallocate of internal resources in 2013, to fulfill our obligations regarding the carrying out of Sewer Integrity Assessments on all agglomerations. This will be submitted as part of our 2013 AER's for all agglomerations.

Section 5. Environmental Liability and Financial Provisions

5.1 Statement of Measures

An ELRA report has not yet been commissioned for the Robertstown agglomeration for 2012 due to resourcing and funding issues in Kildare County Council. Consequently, a detailed “Statement of Measures” cannot be provided as part of this report. It is hoped however that by redeploying resources within the Authority in the coming months, a detailed report can be compiled and available as part of the 2013 AER.

This report will contain measures taken or adopted to prevent environmental damage anticipated following events with discharges or overflows from the wwtp. The report will follow the guidance document published by the EPA.

Kildare County Council wishes however to advice of the following minor measures taken or adopted during 2012 to help prevent environmental damage by the Robertstown WWTP:

1. Replacement of defective outlet flow meter and composite sampler,
2. Installation of new SCADA system to monitor the outlet and both inlets.

With regards to environmental liability funding provisions, Kildare County Council and the CCMA are still in discussions with insurance companies with regards to procuring Environmental Liability Insurance cover premiums for all relevant agglomerations. At present these discussions are still ongoing. For the time being, Kildare County Council will ensure that there is adequate funding through revenue budgets to cover costs associated with discharges from the agglomeration of Robertstown.

5.2 Environmental Liabilities Risk Assessment

As outlined in Section 5.1 above, an ELRA will not be submitted in this AER, but should be submitted in the 2013 AER.

Section 6. Licence Specific Reports

Licence Specific Report	Required in 2012 AER or outstanding from previous AER	Included in 2012 AER	Reference to relevant section of AER (e.g. Appendix 2 Section4.
Priority Substances Assessment	No	n/a	
Drinking Water Abstraction Point Risk Assessment	No	n/a	
Habitats Impact Assessment	No	n/a	
Shellfish Impact Assessment	No	n/a	
Pearl Mussel Report	No	n/a	
Toxicity/Leachate Management	No	n/a	
Toxicity of Final Effluent Report	No	n/a	

6.1 Priority Substances Assessment

Non applicable.

6.2 Drinking Water Abstraction Point Risk Assessment.

Non applicable.

6.3 Shellfish Impact Assessment Report.

Non applicable.

6.4 Toxicity / Leachate Management

Non applicable.

6.5 Toxicity of the Final Effluent Report

Non applicable.

6.6 Pearl Mussel Measures Report

Non applicable.

6.7 Habitats Impact Assessment Report

Non applicable.

Section 7.

Appendices

Appendix A
Storm Water Overflow Assessment Report

Robertstown Waste Water Agglomeration



WWDA License No. D0234-01



Storm Water Overflow Assessment 2013

Table of Contents

1. Introduction
2. Robertstown Agglomeration SWO's – General
3. SW2
 - 3.1 Location and General Description
 - 3.2 Integrity Assessment
 - 3.3 Visual or Aesthetic Impact and Public Complaints
 - 3.4 Deterioration in Water Quality in the receiving waters
 - 3.5 Failure in meeting the requirements of National Regulations on Foot of EU Directives
 - 3.6 Operate during Dry Weather
 - 3.7 SWO Discharges 2012
4. Formula 'A' Requirements
5. Conclusions

Appendix A
Appendix B
Appendix C

Site Location Map
Site Layout Map
Ambient Monitoring Results

1. Introduction

Kildare County Council are required under Condition 4.10.1 of the discharge license to undertake an investigation for the identification and assessment of Storm Water Overflows (SWO) in the sewerage network within the Robertstown agglomeration, in accordance with the '*Urban Waste Water Treatment Directive (91/271/EEC) – Procedures and Criteria in Relation to Storm Water Overflows, DoEHLG 1995*'. The exact wording of the license condition is as follows:

'...the licensee shall carry out an investigation for the identification and assessment of storm water overflows....the assessment shall include a determination of compliance with the criteria for storm water overflows, as set out in the DoEHLG 'Procedures and Criteria in Relation to Storm Water Overflows, 1995 and any other guidance as may be specified by the Agency...'

This report provides an investigation and audit of the existing SWO within the Robertstown agglomeration in accordance with Section 4 of the Directive.

2. Robertstown Agglomeration SWO's – General

Kildare County Council identified in the DL application that there is only one emergency/storm overflow on the sewer network; at pumping station No. 1.

The SWO has been identified as SW2 in the Discharge License. Please refer to Appendix A for details of the agglomeration location, and Appendix B for details of the precise location of SW2 at pumping station No. 1.

A photograph of the location of the SWO is shown below.



SWO Ref	Location	Grid Reference	Receiving Water
SW2	Robertstown wwtp	278591E 225810N	River Slate

This SWO has been assessed under the criteria as set out in Condition 4 of the 'Urban Waste Water Treatment Directive (91/271/EEC) – Procedures and Criteria in Relation to Storm Water Overflows, DoEHLG 1995' as follows:-

- Does the SWO cause significant visual or aesthetic impact and public complaints?
- Does the SWO cause deterioration in water quality in the receiving water?
- Does the SWO give rise to failure in meeting the requirement of National Regulation on foot of EU Directives (Bathing Waters, etc)?
- Does the SWO operate in dry weather?

The subsequent sections of this audit detail the identification and assessment of the storm water overflow within the Robertstown agglomeration.

3 Storm Water Overflow – SW2

3.1 Location & General Description

SW2 is the sole SWO within the agglomeration and is located at Pumping Station 1.

The PS wet-well has an overall depth of approximately 5m, with the SWO being located within the PS, approximately 0.5m below ground level. There is a 225mm diameter overflow pipe from the SWO to an open drain that drains to the nearby River Slate. The overflow comes into operation infrequently but mainly due to heavy rain. As the overflow is activated mainly in response to heavy rain rather than power failure or pump malfunction the EPA Inspector subsequently considered this overflow to be a stormwater overflow.

3.2 Integrity Assessment

A general visual integrity assessment of the pumping station wet-well and 225mmØ pipe was undertaken as part of this report. The reinforced concrete tank and overflow pipe appear structurally sound and show no evidence of deterioration and show no evidence of leakage, failure or distress.

Our operators have reported of no ongoing problems with this outfall pipe such as flow restrictions, surcharging or backflow conditions, and it is included as part of the general maintenance duties of our operatives.

There does not however appear to be ample enough storage within the wet-well to accommodate any storm events, and this requires that a new storm tank is required.

3.3 Visual or Aesthetic Impact & Public Complaints

The wet-well, overflow manhole and associated infrastructure are all located within the boundary of the pumping station. The 225mm SWO pipe is also within the pumping station site prior to its discharge to the surface water drain.

The wet-well, overflow pipe and outfall pipe are not accessible to the public and do not cause a visual or aesthetic impact on the surrounding environment in our view.

No public complaints have been received in 2012 in relation to SW2.

3.4 Deterioration in Water Quality in the Receiving Water

The receiving environment of SW2 is initially to a nearby stream via a 225mm Ø main discharge pipe from the pumping station wet-well, and ultimately to the River Slate which is a tributary of the River Barrow. Because the SWO very rarely comes into use, Kildare County Council has not been carrying out ambient monitoring the stream up until now and has been concentrating our monitoring on the Slate River instead. We will however amend our plans to include the Ballyshannon River going forward, if required by the EPA.

3.5 Failure in Meeting the Requirements of National Regulations on Foot of EU Directives

There are no public drinking water abstraction points on the river Slate downstream of Robertstown, therefore contamination of surface drinking water should not be an issue in the case of an environmental accident.

In relation to recreational, tourism and economic activities; the river Slate is not a designated Salmonid watercourse under the EU Freshwater Fish Directive (78/659/EEC) nor is it designated bathing water.

Our assessment therefore is that SW2 does not contribute to a failure in this regard.

3.6 Operate in Dry Weather

For the monitoring period 2012, there was no flow monitoring on the SWO from Robertstown pumping station. However, from our investigations and speaking to our operators it has been found that SW2 does not normally operate during dry weather.

Kildare County Council did however invest in a major flow monitoring upgrade project in 2012 in a number of WWTP's throughout the County. This project included the inlet and outlet points of Robertstown WWTP and new SCADA monitoring system, but did not include for the SWO. Subject to funding arrangements, it is hoped to extend this project in 2013 to include for a number of SWO's to include Robertstown.

3.7 SWO Discharges – 2012

Due to the lack of SCADA surveillance on the SWO line in Robertstown, it is not possible to ascertain for certain the number of times that SW2 operated during 2012. We should advise however that as per 3.6 above, it is hoped to be able to provide relevant information in this regard for future AER's pertaining to Robertstown agglomeration through the new SCADA system if extended to the SWO.

4 **Formula ‘A’ Requirement**

The ‘Urban Waste Water Treatment Directive (91/271/EEC) – Procedures and Criteria in Relation to Storm Water Overflows, DoEHLG 1995’ stipulates that the minimum setting for a storm water overflow should comply with formula A as follows:

$$\text{Minimum setting} = \text{DWF} + 1.36\text{P} + 2\text{E}$$

Where: DWF = Dry Weather Flow of the catchment
 P = The population served
 E = The non-domestic effluent flow.

In the absence of a detailed hydraulic analysis and data of the Robertstown agglomeration, it is not possible at this stage to assess the current overflow settings of the SWO SW2.

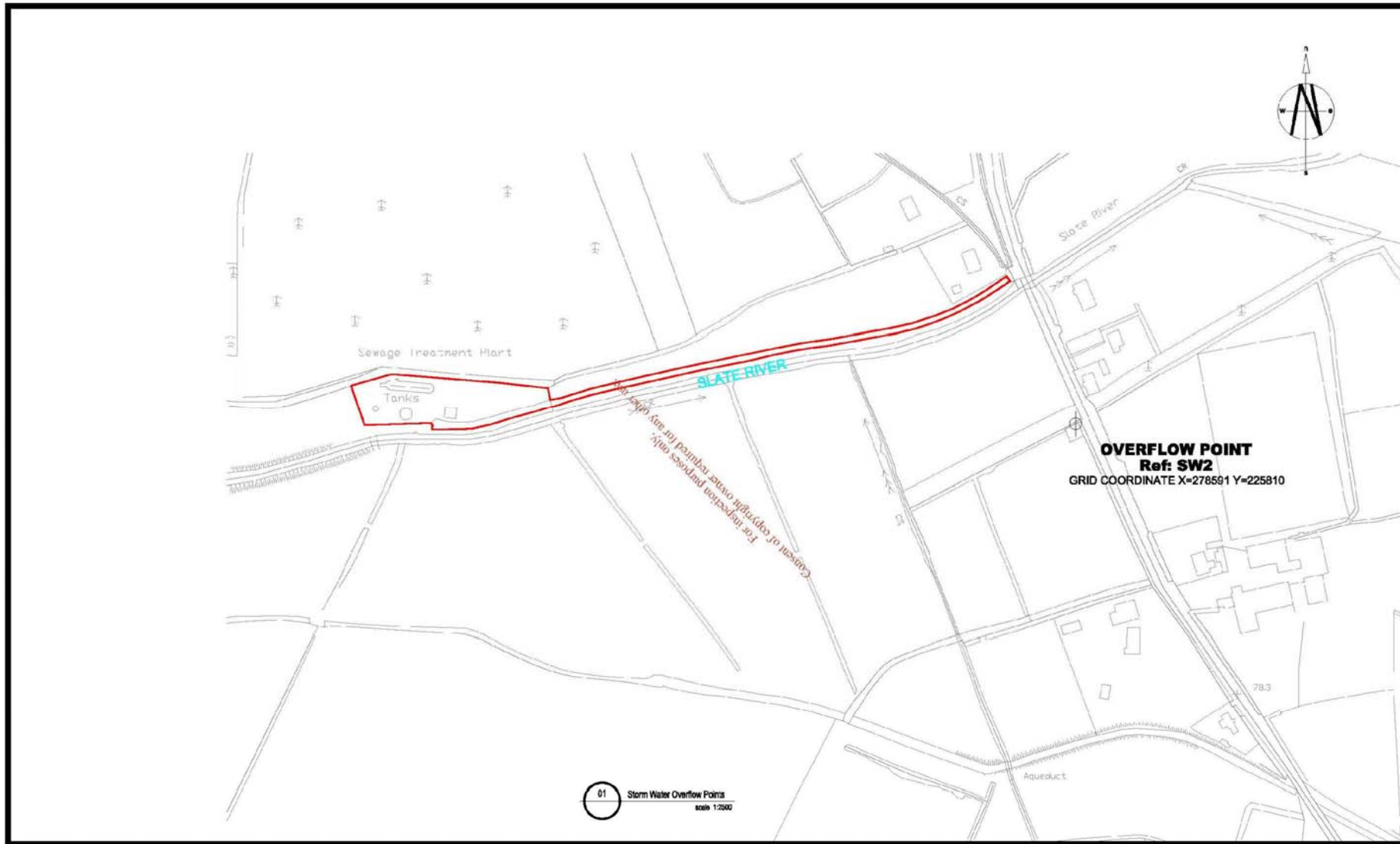
5. Conclusion

Storm Water Overflow SW2 was assessed under the criteria as set out in Section 4 of the '*Urban Waste Water Treatment Directive (91/271/EEC) – Procedures and Criteria in Relation to Storm Water Overflows, DoEHLG 1995*'.

In general, the SWO complies with the requirements of the Directive in terms of visual, aesthetic, public complaints, and DWF operations. It is not possible at this stage to assess for compliance with 'Formula A' due to the lack of adequate flow monitoring systems on the SWO. However, Kildare County Council hope to carry out flow monitoring improvement works at Robertstown WWTP during 2013 should sufficient budget come available.

APPENDIX A

SITE LOCATION MAP



01 Storm Water Overflow Points
Scale 1:2500

PROJECT: 2009 E.P.A Licensing

DRAWING: Storm Water Overflow Points

FILE NAME: EPA Licensing\Robertstown\Ste Mcster\Feb 03

DRAWING NO: Robertstown B.5

SUFFIX	INITIALS	DATE	DESCRIPTION

REVISIONS



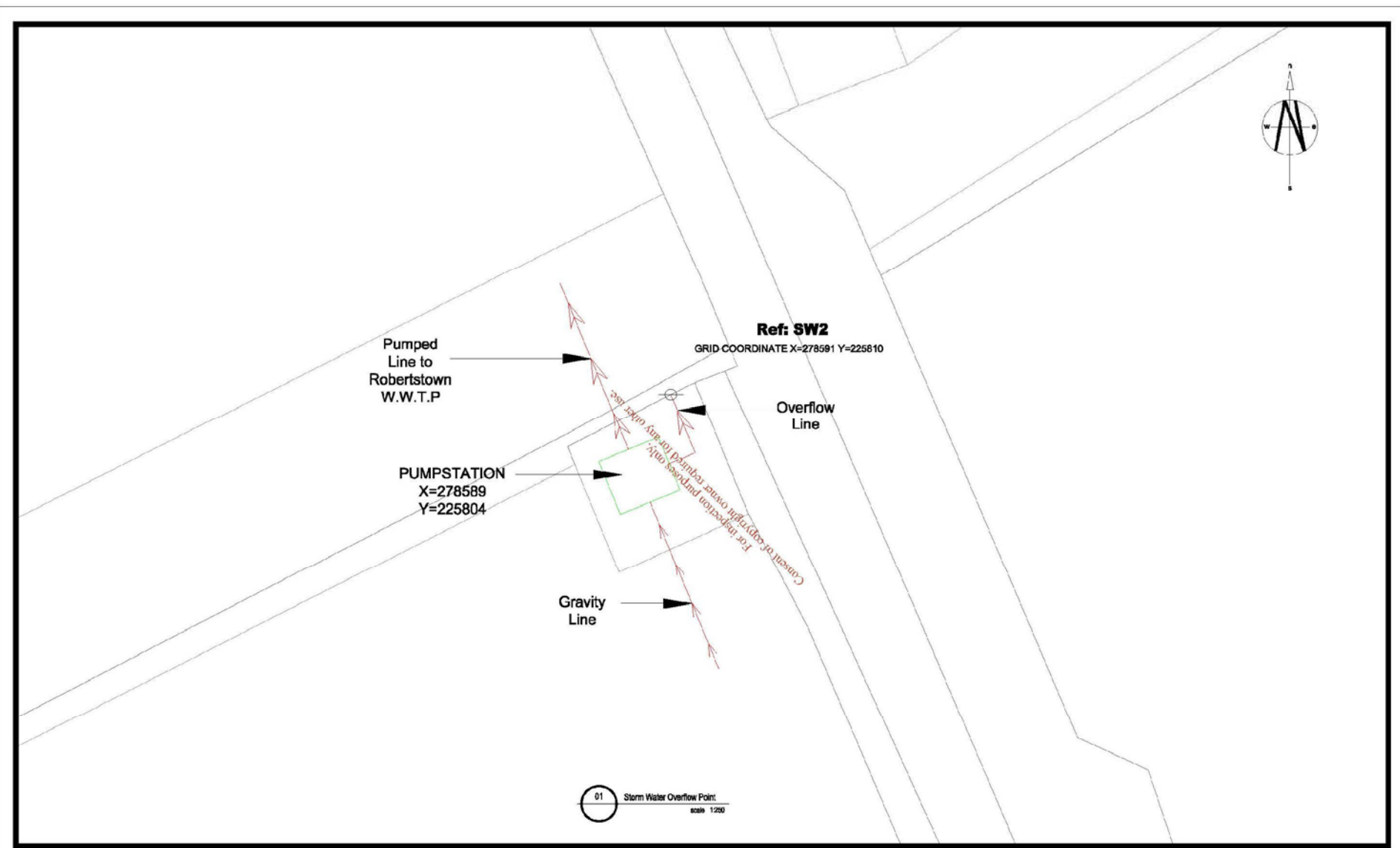
Kildare County Council
Water Services Section

Aras Chill Dara, Devoy Park, Naas, Co. Kildare, Ireland.
Tel: 045-980362, Fax: 045-980359

Scale: 1:2500
Date: Feb 09
Drawn by: J.O'D.
Checked: P.H.
Revision: -

APPENDIX B

SITE LAYOUT MAP



PROJECT: 2009 E.P.A Licensing

DRAWING: Storm Water Overflow Points – Robertstown

FILE NAME: EPA Licensing\Robertstown\Site Master\Feb 03

DRAWING NO.: Robertstown B.5.1

SUFF X	INITIALS	DATE	DESCRIPTION
	A	22-05-08	SCHEMATIC LAYOUT OF PUMPSTATION

REVISIONS



Kildare County Council
Water Services Section

Aras Chill Dara, Devoy Park, Naas, Co. Kildare, Ireland.
Tel: 045-980362, Fax: 045-980359

Scale:	1:250
Date:	Feb 09
Drawn by:	J.O'D.
Checked:	P.H.
Revision:	-



Appendix B

PRTR Report



[Guidance to completing the PRTR workbook](#)

AER Returns Workbook

Version 1.1.15

REFERENCE YEAR	2012
-----------------------	------

1. FACILITY IDENTIFICATION

Parent Company Name	Kildare County Council
Facility Name	Robertstown Waste Water Treatment Plant
PRTR Identification Number	D0234
Licence Number	D0234-01

Waste or IPPC Classes of Activity

No.	class_name
30.4	General

Address 1	Aras Cill Dara
Address 2	Devoy Park
Address 3	Naas
Address 4	County Kildare
	Kildare
Country	Ireland
Coordinates of Location	-6.82765 53.27704
River Basin District	IESE
NACE Code	3700
Main Economic Activity	Sewerage
AER Returns Contact Name	Colm Flynn
AER Returns Contact Email Address	cflynn@kildarecoco.ie
AER Returns Contact Position	Senior Executive Engineer
AER Returns Contact Telephone Number	045880712
AER Returns Contact Mobile Phone Number	
AER Returns Contact Fax Number	045880722
Production Volume	0.0
Production Volume Units	
Number of Installations	0
Number of Operating Hours in Year	0
Number of Employees	0
User Feedback/Comments	
Web Address	

2. PRTR CLASS ACTIVITIES

Activity Number	Activity Name
5(f)	Urban waste-water treatment plants

3. SOLVENTS REGULATIONS (S.I. No. 543 of 2002)

Is it applicable?	
Have you been granted an exemption ?	
If applicable which activity class applies (as per Schedule 2 of the regulations) ?	
Is the reduction scheme compliance route being used ?	

4. WASTE IMPORTED/ACCEPTED ONTO SITE

[Guidance on waste imported/accepted onto site](#)

Do you import/accept waste onto your site for on-site treatment (either recovery or disposal activities) ?	
--	--

This question is only applicable if you are an IPPC or Quarry site

4.1 RELEASES TO AIR

[Link to previous years emissions data](#)

SECTION A : SECTOR SPECIFIC PRTR POLLUTANTS

RELEASES TO AIR					Please enter all quantities in this section in KGs				
POLLUTANT		METHOD			QUANTITY				
No. Annex II	Name	M/C/E	Method Code	Method Used Designation or Description	Emission Point 1	T (Total) KG/Year	A (Accidental) KG/Year	F (Fugitive) KG/Year	
01	Methane (CH4)	E	ESTIMATE	EPA UWWTP Tool Version 5.0		0.0	0.0	0.0	0.0
02	Carbon monoxide (CO)	E	ESTIMATE	EPA UWWTP Tool Version 5.0		0.0	0.0	0.0	0.0
03	Carbon dioxide (CO2)	E	ESTIMATE	EPA UWWTP Tool Version 5.0		0.0	-6154.0	0.0	-6154.0
05	Nitrous oxide (N2O)	E	ESTIMATE	EPA UWWTP Tool Version 5.0		0.0	0.0	0.0	0.0
07	Non-methane volatile organic compounds (NMVOC)	E	ESTIMATE	EPA UWWTP Tool Version 5.0		0.0	0.0	0.0	0.0
08	Nitrogen oxides (NOx/NO2)	E	ESTIMATE	EPA UWWTP Tool Version 5.0		0.0	0.0	0.0	0.0
11	Sulphur oxides (SOx/SO2)	E	ESTIMATE	EPA UWWTP Tool Version 5.0		0.0	0.0	0.0	0.0

* Select a row by double-clicking on the Pollutant Name (Column B) then click the delete button

SECTION B : REMAINING PRTR POLLUTANTS

RELEASES TO AIR					Please enter all quantities in this section in KGs				
POLLUTANT		METHOD			QUANTITY				
No. Annex II	Name	M/C/E	Method Code	Method Used Designation or Description	Emission Point 1	T (Total) KG/Year	A (Accidental) KG/Year	F (Fugitive) KG/Year	
						0.0	0.0	0.0	0.0

* Select a row by double-clicking on the Pollutant Name (Column B) then click the delete button

SECTION C : REMAINING POLLUTANT EMISSIONS (As required in your Licence)

RELEASES TO AIR					Please enter all quantities in this section in KGs				
POLLUTANT		METHOD			QUANTITY				
Pollutant No.	Name	M/C/E	Method Code	Method Used Designation or Description	Emission Point 1	T (Total) KG/Year	A (Accidental) KG/Year	F (Fugitive) KG/Year	
						0.0	0.0	0.0	0.0

* Select a row by double-clicking on the Pollutant Name (Column B) then click the delete button

Additional Data Requested from Landfill operators

For the purposes of the National Inventory on Greenhouse Gases, landfill operators are requested to provide summary data on landfill gas (Methane) flared or utilised on their facilities to accompany the figures for total methane generated. Operators should only report their Net methane (CH4) emission to the environment under T(total) KG/yr for Section A: Sector specific PRTR pollutants above. Please complete the table below:

Landfill: Please enter summary data on the quantities of methane flared and / or utilised	Robertstown Waste Water Treatment Plant				Facility Total Capacity m3 per hour
	T (Total) kg/Year	M/C/E	Method Code	Method Used Designation or Description	
Total estimated methane generation (as per site model)	0.0				N/A
Methane flared	0.0				0.0 (Total Flaring Capacity)
Methane utilised in engine/s	0.0				0.0 (Total Utilising Capacity)
Net methane emission (as reported in Section A above)	0.0				N/A

4.2 RELEASES TO WATERS

[Link to previous years emissions data](#)

| PRTR# : D0234 | Facility Name : Robertstown Waste Water Treatment Plant | Filename : RobertstownPRTR.xls | Return Year : 2012 |

27/02/2013 15:29

SECTION A : SECTOR SPECIFIC PRTR POLLUTANTS

Data on ambient monitoring of storm/surface water or groundwater, conducted as part of your licence requirements, should NOT be submitted under AER / PRTR Reporting as this only concerns Releases fr

RELEASES TO WATERS					Please enter all quantities in this section in KGs			
No. Annex II	POLLUTANT Name	M/C/E	Method Used		Emission Point 1	QUANTITY		
			Method Code	Designation or Description		T (Total) KG/Year	A (Accidental) KG/Year	F (Fugitive) KG/Year
34	1,2-dichloroethane (EDC)	E	ESTIMATE	EPA UWWTP Tool Version 5.0	0.0	0.0	0.0	0.0
25	Alachlor	E	ESTIMATE	EPA UWWTP Tool Version 5.0	0.0	0.0	0.0	0.0
26	Aldrin	E	ESTIMATE	EPA UWWTP Tool Version 5.0	0.0	0.0	0.0	0.0
61	Anthracene	E	ESTIMATE	EPA UWWTP Tool Version 5.0	0.0	0.0	0.0	0.0
17	Arsenic and compounds (as As)	E	ESTIMATE	EPA UWWTP Tool Version 5.0	0.039	0.039	0.0	0.0
27	Atrazine	E	ESTIMATE	EPA UWWTP Tool Version 5.0	0.001	0.001	0.0	0.0
62	Benzene	E	ESTIMATE	EPA UWWTP Tool Version 5.0	0.001	0.001	0.0	0.0
91	Benzo(g,h,i)perylene	E	ESTIMATE	EPA UWWTP Tool Version 5.0	0.0	0.0	0.0	0.0
63	Brominated diphenylethers (PBDE)	E	ESTIMATE	EPA UWWTP Tool Version 5.0	0.0	0.0	0.0	0.0
18	Cadmium and compounds (as Cd)	E	ESTIMATE	EPA UWWTP Tool Version 5.0	0.018	0.018	0.0	0.0
28	Chlordane	E	ESTIMATE	EPA UWWTP Tool Version 5.0	0.0	0.0	0.0	0.0
29	Chlordecone	E	ESTIMATE	EPA UWWTP Tool Version 5.0	0.0	0.0	0.0	0.0
30	Chlorfenvinphos	E	ESTIMATE	EPA UWWTP Tool Version 5.0	0.0	0.0	0.0	0.0
79	Chlorides (as Cl)	E	ESTIMATE	EPA UWWTP Tool Version 5.0	3698.669	3698.669	0.0	0.0
31	Chloro-alkanes, C10-C13	E	ESTIMATE	EPA UWWTP Tool Version 5.0	0.014	0.014	0.0	0.0
32	Chlorpyrifos	E	ESTIMATE	EPA UWWTP Tool Version 5.0	0.0	0.0	0.0	0.0
19	Chromium and compounds (as Cr)	E	ESTIMATE	EPA UWWTP Tool Version 5.0	0.055	0.055	0.0	0.0
20	Copper and compounds (as Cu)	E	ESTIMATE	EPA UWWTP Tool Version 5.0	0.205	0.205	0.0	0.0
82	Cyanides (as total CN)	E	ESTIMATE	EPA UWWTP Tool Version 5.0	0.2	0.2	0.0	0.0
33	DDT	E	ESTIMATE	EPA UWWTP Tool Version 5.0	0.0	0.0	0.0	0.0
70	Di-(2-ethyl hexyl) phthalate (DEHP)	E	ESTIMATE	EPA UWWTP Tool Version 5.0	0.063	0.063	0.0	0.0
35	Dichloromethane (DCM)	E	ESTIMATE	EPA UWWTP Tool Version 5.0	0.003	0.003	0.0	0.0
36	Dieldrin	E	ESTIMATE	EPA UWWTP Tool Version 5.0	0.0	0.0	0.0	0.0
37	Diuron	E	ESTIMATE	EPA UWWTP Tool Version 5.0	0.002	0.002	0.0	0.0
38	Endosulphan	E	ESTIMATE	EPA UWWTP Tool Version 5.0	0.0	0.0	0.0	0.0
39	Endrin	E	ESTIMATE	EPA UWWTP Tool Version 5.0	0.0	0.0	0.0	0.0

65	Ethyl benzene	E	ESTIMATE	EPA UWWTP Tool Version 5.0	0.001	0.001	0.0	0.0
88	Fluoranthene	E	ESTIMATE	EPA UWWTP Tool Version 5.0	0.0	0.0	0.0	0.0
83	Fluorides (as total F)	E	ESTIMATE	EPA UWWTP Tool Version 5.0	16.06	16.06	0.0	0.0
40	Halogenated organic compounds (as AOX)	E	ESTIMATE	EPA UWWTP Tool Version 5.0	0.163	0.163	0.0	0.0
41	Heptachlor	E	ESTIMATE	EPA UWWTP Tool Version 5.0	0.0	0.0	0.0	0.0
90	Hexabromobiphenyl	E	ESTIMATE	EPA UWWTP Tool Version 5.0	0.0	0.0	0.0	0.0
42	Hexachlorobenzene (HCB)	E	ESTIMATE	EPA UWWTP Tool Version 5.0	0.0	0.0	0.0	0.0
43	Hexachlorobutadiene (HCBd)	E	ESTIMATE	EPA UWWTP Tool Version 5.0	0.0	0.0	0.0	0.0
89	Isodrin	E	ESTIMATE	EPA UWWTP Tool Version 5.0	0.0	0.0	0.0	0.0
67	Isoproturon	E	ESTIMATE	EPA UWWTP Tool Version 5.0	0.001	0.001	0.0	0.0
23	Lead and compounds (as Pb)	E	ESTIMATE	EPA UWWTP Tool Version 5.0	0.208	0.208	0.0	0.0
45	Lindane	E	ESTIMATE	EPA UWWTP Tool Version 5.0	0.0	0.0	0.0	0.0
21	Mercury and compounds (as Hg)	E	ESTIMATE	EPA UWWTP Tool Version 5.0	0.0	0.0	0.0	0.0
46	Mirex	E	ESTIMATE	EPA UWWTP Tool Version 5.0	0.0	0.0	0.0	0.0
68	Naphthalene	E	ESTIMATE	EPA UWWTP Tool Version 5.0	0.0	0.0	0.0	0.0
22	Nickel and compounds (as Ni)	E	ESTIMATE	EPA UWWTP Tool Version 5.0	0.291	0.291	0.0	0.0
64	Nonylphenol and Nonylphenol ethoxylates (NP/NPEs)	E	ESTIMATE	EPA UWWTP Tool Version 5.0	0.006	0.006	0.0	0.0
87	Octylphenols and Octylphenol ethoxylates	E	ESTIMATE	EPA UWWTP Tool Version 5.0	0.0	0.0	0.0	0.0
69	Organotin compounds (as total Sn)	E	ESTIMATE	EPA UWWTP Tool Version 5.0	0.0	0.0	0.0	0.0
48	Pentachlorobenzene	E	ESTIMATE	EPA UWWTP Tool Version 5.0	0.0	0.0	0.0	0.0
49	Pentachlorophenol (PCP)	E	ESTIMATE	EPA UWWTP Tool Version 5.0	0.0	0.0	0.0	0.0
71	Phenols (as total C)	E	ESTIMATE	EPA UWWTP Tool Version 5.0	0.062	0.062	0.0	0.0
50	Polychlorinated biphenyls (PCBs)	E	ESTIMATE	EPA UWWTP Tool Version 5.0	0.0	0.0	0.0	0.0
72	Polycyclic aromatic hydrocarbons (PAHs)	E	ESTIMATE	EPA UWWTP Tool Version 5.0	0.001	0.001	0.0	0.0
51	Simazine	E	ESTIMATE	EPA UWWTP Tool Version 5.0	0.001	0.001	0.0	0.0
52	Tetrachloroethylene (PER)	E	ESTIMATE	EPA UWWTP Tool Version 5.0	0.004	0.004	0.0	0.0
53	Tetrachloromethane (TCM)	E	ESTIMATE	EPA UWWTP Tool Version 5.0	0.0	0.0	0.0	0.0
73	Toluene	E	ESTIMATE	5.0	0.034	0.034	0.0	0.0
12	Total nitrogen	M	OTH	HACH	683.42	683.42	0.0	0.0
76	Total organic carbon (TOC) (as total C or COD/3)	E	ESTIMATE	EPA UWWTP Tool Version 5.0	630.098	630.098	0.0	0.0
13	Total phosphorus	M	OTH	HACH	47.156	47.156	0.0	0.0

59	Toxaphene	E	ESTIMATE	EPA UWWTP Tool Version 5.0	0.0	0.0	0.0	0.0
74	Tributyltin and compounds	E	ESTIMATE	EPA UWWTP Tool Version 5.0	0.0	0.0	0.0	0.0
54	Trichlorobenzenes (TCBs)(all isomers)	E	ESTIMATE	EPA UWWTP Tool Version 5.0	0.0	0.0	0.0	0.0
57	Trichloroethylene	E	ESTIMATE	EPA UWWTP Tool Version 5.0	0.0	0.0	0.0	0.0
77	Trifluralin	E	ESTIMATE	EPA UWWTP Tool Version 5.0	0.0	0.0	0.0	0.0
75	Triphenyltin and compounds	E	ESTIMATE	EPA UWWTP Tool Version 5.0	0.0	0.0	0.0	0.0
60	Vinyl chloride	E	ESTIMATE	EPA UWWTP Tool Version 5.0	0.0	0.0	0.0	0.0
78	Xylenes	E	ESTIMATE	EPA UWWTP Tool Version 5.0	0.008	0.008	0.0	0.0
24	Zinc and compounds (as Zn)	E	ESTIMATE	EPA UWWTP Tool Version 5.0	3.374	3.374	0.0	0.0

* Select a row by double-clicking on the Pollutant Name (Column B) then click the delete button

SECTION B : REMAINING PRTR POLLUTANTS

RELEASES TO WATERS					Please enter all quantities in this section in KGs			
POLLUTANT		M/C/E	Method Used		QUANTITY			
No. Annex II	Name		Method Code	Designation or Description	Emission Point 1	T (Total) KG/Year	A (Accidental) KG/Year	F (Fugitive) KG/Year
					0.0	0.0	0.0	0.0

* Select a row by double-clicking on the Pollutant Name (Column B) then click the delete button

SECTION C : REMAINING POLLUTANT EMISSIONS (as required in your Licence)

RELEASES TO WATERS					Please enter all quantities in this section in KGs			
POLLUTANT		M/C/E	Method Used		QUANTITY			
Pollutant No.	Name		Method Code	Designation or Description	Emission Point 1	T (Total) KG/Year	A (Accidental) KG/Year	F (Fugitive) KG/Year
370	Selenium	E	ESTIMATE	EPA UWWTP Tool Version 5.0	0.0	0.0	0.0	0.0
205	Antimony (as Sb)	E	ESTIMATE	EPA UWWTP Tool Version 5.0	0.011	0.011	0.0	0.0
368	Molybdenum	E	ESTIMATE	EPA UWWTP Tool Version 5.0	0.0	0.0	0.0	0.0
358	Tin	E	ESTIMATE	EPA UWWTP Tool Version 5.0	0.01	0.01	0.0	0.0
373	Barium	E	ESTIMATE	EPA UWWTP Tool Version 5.0	0.905	0.905	0.0	0.0
374	Boron	E	ESTIMATE	EPA UWWTP Tool Version 5.0	4.176	4.176	0.0	0.0
356	Cobalt	E	ESTIMATE	EPA UWWTP Tool Version 5.0	0.012	0.012	0.0	0.0
386	Vanadium	E	ESTIMATE	EPA UWWTP Tool Version 5.0	0.186	0.186	0.0	0.0
388	Dichlobenil	E	ESTIMATE	EPA UWWTP Tool Version 5.0	0.0	0.0	0.0	0.0
383	Linuron	E	ESTIMATE	EPA UWWTP Tool Version 5.0	0.0	0.0	0.0	0.0
385	Mecoprop Total	E	ESTIMATE	EPA UWWTP Tool Version 5.0	0.007	0.007	0.0	0.0
380	2,4 Dichlorophenol (2,4 D)	E	ESTIMATE	EPA UWWTP Tool Version 5.0	0.003	0.003	0.0	0.0
384	MCPA	E	ESTIMATE	EPA UWWTP Tool Version 5.0	0.006	0.006	0.0	0.0

382	Glyphosate	E	ESTIMATE	EPA UWWTP Tool Version 5.0	0.105	0.105	0.0	0.0
389	Benzo[a]pyrene	E	ESTIMATE	EPA UWWTP Tool Version 5.0	0.0	0.0	0.0	0.0
390	Benzo[b]fluoranthene	E	ESTIMATE	EPA UWWTP Tool Version 5.0	0.0	0.0	0.0	0.0
391	Benzo[k]fluoranthene	E	ESTIMATE	EPA UWWTP Tool Version 5.0	0.0	0.0	0.0	0.0
392	Indeno[1,2,3-c,d]pyrene	E	ESTIMATE	EPA UWWTP Tool Version 5.0	0.0	0.0	0.0	0.0
393	Carbon tetrachloride	E	ESTIMATE	EPA UWWTP Tool Version 5.0	0.0	0.0	0.0	0.0
394	2,6-Dichlorobenzamide	E	ESTIMATE	EPA UWWTP Tool Version 5.0	0.005	0.005	0.0	0.0
395	Dicofol	E	ESTIMATE	EPA UWWTP Tool Version 5.0	0.0	0.0	0.0	0.0
396	Hexabromocyclodecane (HBCD)	E	ESTIMATE	EPA UWWTP Tool Version 5.0	0.0	0.0	0.0	0.0
397	PFOS	E	ESTIMATE	EPA UWWTP Tool Version 5.0	0.0	0.0	0.0	0.0
238	Ammonia (as N)	M	OTH	HACH	20.503	20.503	0.0	0.0
303	BOD	M	OTH	Standard method	119.599	119.599	0.0	0.0
306	COD	M	OTH	HACH	1708.55	1708.55	0.0	0.0
362	Kjeldahl Nitrogen	E	ESTIMATE	EPA UWWTP Tool Version 5.0	0.0	0.0	0.0	0.0
327	Nitrate (as N)	E	ESTIMATE	EPA UWWTP Tool Version 5.0	0.0	0.0	0.0	0.0
372	Nitrite (as N)	E	ESTIMATE	EPA UWWTP Tool Version 5.0	0.0	0.0	0.0	0.0
332	Ortho-phosphate (as PO4)	M	OTH	HACH	27.337	27.337	0.0	0.0
240	Suspended Solids	M	OTH	Standard method	177.689	177.689	0.0	0.0

* Select a row by double-clicking on the Pollutant Name (Column B) then click the delete button

4.3 RELEASES TO WASTEWATER OR SEWER

[Link to previous years emissions data](#)

| PRTR#: D0234 | Facility Name : Robertstown Waste Water Treatment Plant | Filename : Robertstowr

27/02/2013 15:29

SECTION A : PRTR POLLUTANTS

OFFSITE TRANSFER OF POLLUTANTS DESTINED FOR WASTE-WATER TREATMENT OR SEWER					Please enter all quantities in this section in KGs			
POLLUTANT		METHOD			QUANTITY			
No. Annex II	Name	M/C/E	Method Code	Method Used Designation or Description	Emission Point 1	T (Total) KG/Year	A (Accidental) KG/Year	F (Fugitive) KG/Year
					0.0	0.0	0.0	0.0

* Select a row by double-clicking on the Pollutant Name (Column B) then click the delete button

SECTION B : REMAINING POLLUTANT EMISSIONS (as required in your Licence)

OFFSITE TRANSFER OF POLLUTANTS DESTINED FOR WASTE-WATER TREATMENT OR SEWER					Please enter all quantities in this section in KGs			
POLLUTANT		METHOD			QUANTITY			
Pollutant No.	Name	M/C/E	Method Code	Method Used Designation or Description	Emission Point 1	T (Total) KG/Year	A (Accidental) KG/Year	F (Fugitive) KG/Year
					0.0	0.0	0.0	0.0

* Select a row by double-clicking on the Pollutant Name (Column B) then click the delete button

4.4 RELEASES TO LAND

[Link to previous years emissions data](#)

| PRTR# : D0234 | Facility Name : Robertstown Waste Water Treatment Plant | Filename : RobertstownPRTR.xls | Return Year : 2012 |

27/02/2013 15:29

SECTION A : PRTR POLLUTANTS

POLLUTANT		RELEASERS TO LAND			Please enter all quantities in this section in KGs		
POLLUTANT		METHOD			QUANTITY		
No. Annex II	Name	M/C/E	Method Code	Method Used Designation or Description	Emission Point 1	T (Total) KG/Year	A (Accidental) KG/Year
					0.0	0.0	0.0

* Select a row by double-clicking on the Pollutant Name (Column B) then click the delete button

SECTION B : REMAINING POLLUTANT EMISSIONS (as required in your Licence)

POLLUTANT		RELEASERS TO LAND			Please enter all quantities in this section in KGs		
POLLUTANT		METHOD			QUANTITY		
Pollutant No.	Name	M/C/E	Method Code	Method Used Designation or Description	Emission Point 1	T (Total) KG/Year	A (Accidental) KG/Year
					0.0	0.0	0.0

* Select a row by double-clicking on the Pollutant Name (Column B) then click the delete button

5. ONSITE TREATMENT & OFFSITE TRANSFERS OF WASTE

[PRTR# : D0234 | Facility Name : Robertstown Waste Water Treatment Plant | Filename : RobertstownPRTR.xls | Return Year : 2012.]

27/02/2013 15:29

Please enter all quantities on this sheet in Tonnes

Transfer Destination	European Waste Code	Hazardous	Quantity (Tonnes per Year)	Description of Waste	Waste Treatment Operation	Method Used		Location of Treatment	Haz Waste : Name and Licence/Permit No of Next Destination Facility	Non	Haz Waste : Address of Next Destination Facility	Name and License / Permit No. and Address of Final Recoverer / Disposer (HAZARDOUS WASTE ONLY)	Actual Address of Final Destination i.e. Final Recovery / Disposal Site (HAZARDOUS WASTE ONLY)
						Haz Waste : Name and Licence/Permit No of Recoverer/Disposer	Non Haz Waste: Address of Recoverer/Disposer						
						M/C/E	Method Used						
Within the Country	19 08 05	No	46.11	sludges from treatment of urban waste water	R10	M	Weighed	Offsite in Ireland					

* Select a row by double-clicking the Description of Waste then click the delete button

[Link to previous years waste data](#)

[Link to previous years waste summary data & percentage change](#)

Section 8. Certification and Sign Off

Does the AER include an executive summary?	Yes
Does the AER include an assessment of the performance of the Waste Water Works (i.e. have the results of assessments been interpreted against WWDL requirements and or Environmental Quality Standards)?	Yes
Is there a need to advise the EPA for consideration of a technical amendment / review of the licence?	No
List reason e.g. additional SWO identified	N/A
Is there a need to request/advise the EPA of any modifications to the existing WWDL? Refer to Condition 1.7 (changes to works/discharges) & Condition 4 (changes to monitoring location, frequency etc.)	No
List reason e.g. failure to complete specified works within dates specified in the licence, changes to monitoring requirements	N/A
Have these processes commenced? (i.e. Request for Technical Amendment / Licence Review / Change Request)	N/A
Are all outstanding reports and assessments from previous AERs included as an appendix to this AER?	No
List outstanding reports	N/A

I certify that the information given in this AER is truthful, accurate and complete.

Signed by: _____

(On behalf of the organization)

Print signature name: _____

Position in organization: _____

Date: _____