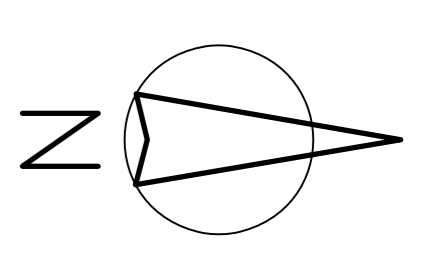


1. ALL LEVELS ARE RELATIVE TO ORDNANCE DATUM (MUN. HEAD).
2. CONTIGUOUS ARE AT 25M INTERVALS.
3. ALL INTERNAL ROADS, SERVICES & BUILDINGS ARE RELATIVE TO RSH TRANSVERSE WERKHOUD ON-OR-DRAWN REFERENCE SYSTEM.

GRAPHIC SCALE

( IN METERS )

1 : 5000



**BUILDING LEGEND:-**

LARGE ARTICULATED VEHICLE	
PROPOSED HARSHAVING AREA (EXTENDED SECTION)	
PROPOSED ACCESS ROAD WITH TARMACADAM SURFACE FINISH	
PROPOSED ACCESS ROAD	
PROPOSED MILL HOUSE	
PROPOSED DRY SOW HOUSE (DS1)	
PROPOSED FARMING HOUSE (FH1 & FH2)	
PROPOSED RE-CONSTRUCTED GILT HOUSE-G	
PROPOSED RE-CONSTRUCTED FATTENING HOUSE'S A,B & C	
PROPOSED FATTENING HOUSE (F1, F2 & F3)	
FOOTPRINT OF EXISTING PIG UNIT STRUCTURE	
FOOTPRINT OF EXISTING OPEN TANK STRUCTURE	
FOOTPRINT OF EXISTING BUILDING STRUCTURE	

REFER TO DRAWING T-001 FOR ASSESSMENT OF RE-LOCATED SITE ACCESS FOR PROPOSED PIG UNITS IN ACCORDANCE WITH DMRB.

ALL EXISTING SILOS ARE TO BE DE-COMMISSIONED, REMOVED & REPLACED WITH NEW SILOS IN THE PROPOSED MILL HOUSE

REFER TO DRAWING C-007 FOR EXISTING & PROPOSED PIG UNIT ELEVATIONS AS INDICATED BY SECTION MARKER A-A & SECTION MARKER B-B

REFER TO DRAWINGS C-003, C-004, C-005 & C-006 FOR PROPOSED PIG UNITS INDIVIDUAL BUILDINGS, PLANS, ELEVATION'S & CROSS SECTION CONSTRUCTION DETAILS.

**EXISTING PIG UNIT BUILDINGS**

**TO BE MAINTAINED**

FARROWING HSE NO. <b>D</b>	EXISTING
FATTENING HSE NO. <b>J</b>	EXISTING
FIRST WEANER HSE. <b>J</b>	EXISTING
FIRST WEANER HSE NO. <b>K</b>	EXISTING
2ND STAGE WEANER HSE NO. <b>L</b>	EXISTING
2ND STAGE WEANER HSE NO. <b>M</b>	EXISTING
DRY SOW HSE NO. <b>N</b>	EXISTING
FATTENING HSE NO. <b>O</b>	EXISTING
FATTENING HSE NO. <b>P</b>	EXISTING

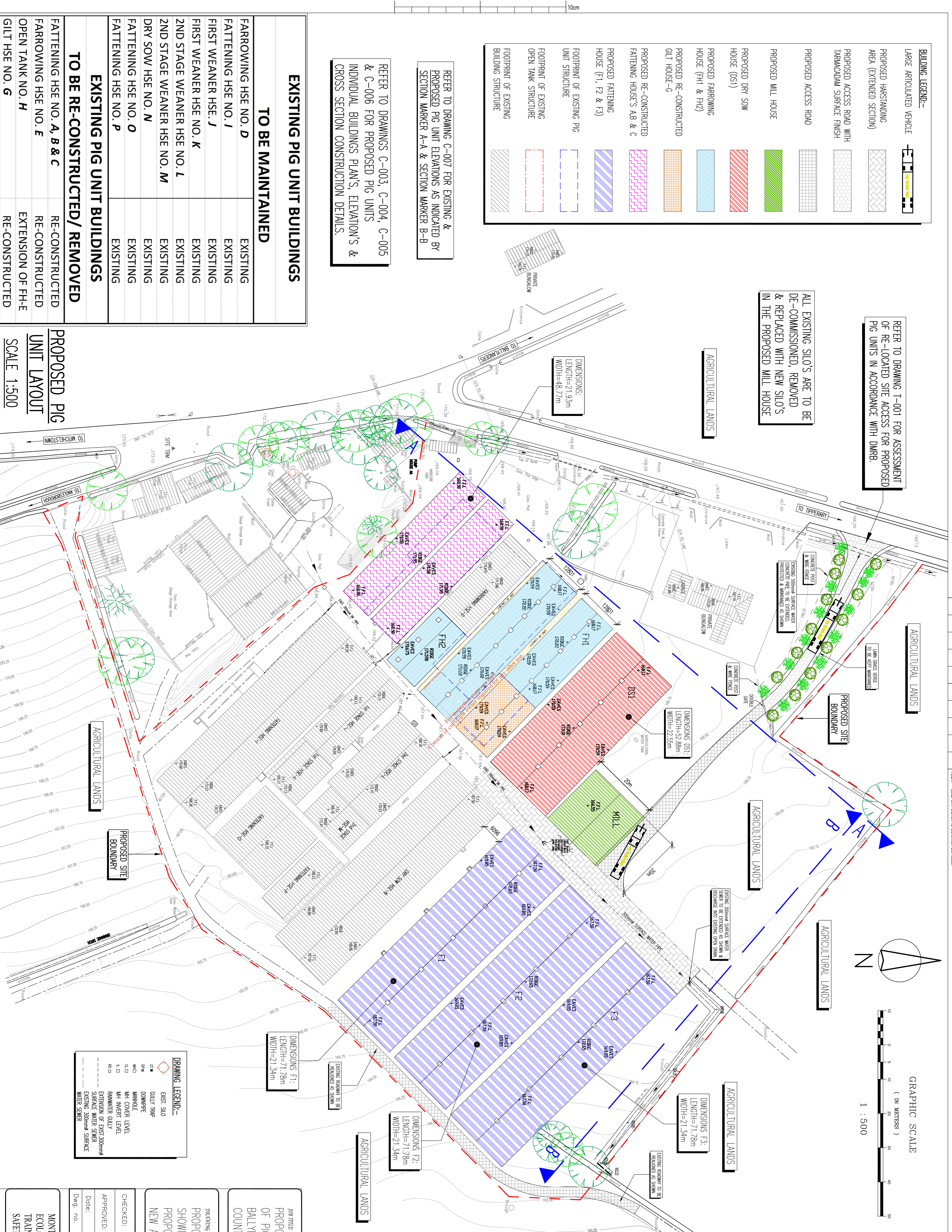
**EXISTING PIG UNIT BUILDINGS**

**TO BE RE-CONSTRUCTED/ REMOVED**

FATTENING HSE NO. <b>A, B &amp; C</b>	RE-CONSTRUCTED
FARROWING HSE NO. <b>E</b>	RE-CONSTRUCTED
OPEN TANK NO. <b>H</b>	EXTENSION OF FH-E
GILT HSE NO. <b>G</b>	RE-CONSTRUCTED

**PROPOSED PIG UNIT LAYOUT**

SCALE 1:500



**DRAWING LEGEND:-**

	EXIST SILO
	GULLY TRAP
	DOWNPIPE
	MANHOLE
	MH COVER LEVEL
	MH INVERT LEVEL
	RAINWATER DUCT
	EXTENSION OF EXIST 300mm SURFACE WATER SEWER
	EXISTING 300mm SURFACE WATER SEWER

**DRAWING STATUS**

Rev.	Date	By	Description	Drawn By
PL1	09/04/12	FF	PLANNING	

**PLANNING.**

**JOB TITLE:**  
PROPOSED PHASED RE-DEVELOPMENT OF PIG UNIT, BALLYFUSKEEN, BALLYLANDERS, COUNTY LIMERICK.

**DRAWING TITLE:**  
PROPOSED PIG UNIT LAYOUT SHOWING RE-CONSTRUCTED BUILDINGS, PROPOSED BUILDINGS & PROPOSED NEW ACCESS ROAD.

**CHECKED:** *J. Fitzgerald* NIET, ICD08, 2nd grad Dip, 3rd class, 2nd class, 3rd class, 4th class, 5th class, 6th class, 7th class, 8th class, 9th class, 10th class, 11th class, 12th class, 13th class, 14th class, 15th class, 16th class, 17th class, 18th class, 19th class, 20th class, 21st class, 22nd class, 23rd class, 24th class, 25th class, 26th class, 27th class, 28th class, 29th class, 30th class, 31st class, 32nd class, 33rd class, 34th class, 35th class, 36th class, 37th class, 38th class, 39th class, 40th class, 41st class, 42nd class, 43rd class, 44th class, 45th class, 46th class, 47th class, 48th class, 49th class, 50th class, 51st class, 52nd class, 53rd class, 54th class, 55th class, 56th class, 57th class, 58th class, 59th class, 60th class, 61st class, 62nd class, 63rd class, 64th class, 65th class, 66th class, 67th class, 68th class, 69th class, 70th class, 71st class, 72nd class, 73rd class, 74th class, 75th class, 76th class, 77th class, 78th class, 79th class, 80th class, 81st class, 82nd class, 83rd class, 84th class, 85th class, 86th class, 87th class, 88th class, 89th class, 90th class, 91st class, 92nd class, 93rd class, 94th class, 95th class, 96th class, 97th class, 98th class, 99th class, 100th class

**APPROVED:** *Trevor Montgomery* 2nd grad Dip, 3rd, 2nd night, 3rd night, 4th night, 5th night, 6th night, 7th night, 8th night, 9th night, 10th night, 11th night, 12th night, 13th night, 14th night, 15th night, 16th night, 17th night, 18th night, 19th night, 20th night, 21st night, 22nd night, 23rd night, 24th night, 25th night, 26th night, 27th night, 28th night, 29th night, 30th night, 31st night, 32nd night, 33rd night, 34th night, 35th night, 36th night, 37th night, 38th night, 39th night, 40th night, 41st night, 42nd night, 43rd night, 44th night, 45th night, 46th night, 47th night, 48th night, 49th night, 50th night, 51st night, 52nd night, 53rd night, 54th night, 55th night, 56th night, 57th night, 58th night, 59th night, 60th night, 61st night, 62nd night, 63rd night, 64th night, 65th night, 66th night, 67th night, 68th night, 69th night, 70th night, 71st night, 72nd night, 73rd night, 74th night, 75th night, 76th night, 77th night, 78th night, 79th night, 80th night, 81st night, 82nd night, 83rd night, 84th night, 85th night, 86th night, 87th night, 88th night, 89th night, 90th night, 91st night, 92nd night, 93rd night, 94th night, 95th night, 96th night, 97th night, 98th night, 99th night, 100th night

**Date:** 13/03/12 **Scale:** 1:5000 @ A1.

**Dwg. no.:** C-002.

**MONTGOMERY EHS, ECOLOGY, ENVIRONMENTAL, TRAINING AND HEALTH & SAFETY CONSULTANTS**

