

# Comhairle Contae Chorcaí Cork County Council

Halla an Chontae,  
Corcaigh, Éire.  
Fón: (021) 4276891 • Faics: (021) 4276321  
Suíomh Gréasáin: www.corkcoco.ie  
County Hall,  
Cork, Ireland  
Tel: (021) 4276891 • Fax: (021) 4276321  
Web: www.corkcoco.ie



Administration  
Environmental Licensing Programme  
Office of Climate, Licensing & Resource Use  
Environmental Protection Agency  
Regional Inspectorate  
Inniscarra  
Co. Cork.

Date: 23/03/2012

Our reference: MS/Clou/RFI2  
Your reference: D0330-01

FAO: Mr Stuart Huskisson

**RE: Notice in Accordance with Regulation 18(3)(b) of the Waste Water Discharge (Authorisation) Regulations 2007.**  
**Application Register No. D0330-01, Cloughduffy.**

Dear Sir/Madam,

I refer to your letter dated 02 December 2011 and my reply dated 11/01/2012 referenced MS/Clou/RFI, please find attached revised drawing number B1\_Map5\_B showing the changes to the agglomeration boundary as requested, and a revised version of the Non-Technical Summary forming section A in the application form.

Please find enclosed a CD for the revised drawing and section A in PDF format, together with 2 hard copies of same.

Yours Faithfully,

Noel O'Keeffe,  
County Engineer & Director of Water Services,  
Cork County Council  
County Hall, Cork.



## **SECTION A: CLOUGHDOUV WWTP : A NON-TECHNICAL SUMMARY SHEET**

### **The Waste Water Works and the Activities Carried Out at Cloughduv are as follows:**

#### **A Brief Summary:**

Cloughduv is a small village approximately 17 miles from Cork City and 8.5 miles from Macroom. It is located to the south of the N22 national primary road.

The waste water in Cloughduv village is collected in a separate foul sewerage collection system . The waste water flows by gravity to the waste water treatment plant. There is one pumping station located within the village. The waste water enters the WWTP via a 225mm gravity sewer.

The new WWTP with a population equivalent of 1500 was built to replace an existing plant with a population equivalent of 500. The new WWTP was commissioned in 2010 as a result of design ,build and operate contract agreement between Response Engineering and Cork county Council.

#### **The treatment process at Cloughduv incorporates the following:**

- Inlet works : A new inlet pumping station
- Preliminary treatment : screening and grit removal
- Flow measurement ,control and sampling
- Storm water storage
- Flow splitting
- Primary Settlement
- Secondary treatment (BOD&SS REMOVAL)
- Sampling . in addition to the items below:

**The WWTP also includes the following elements :**

- Provision of a ferric storage tank and dosing system
- New Tertiary treatment using a filtration system
- New Sludge pumping and sludge holding tank
- New Final effluent pumping station and outfall to the Bride River
- Miscellaneous Mechanical and Electrical Works
- New Control / Staff Facilities Building
- New Site Roads and Footpaths
- New Site Fencing
- Landscaping and screen planting.

**The sources of emissions from the waste water works:**

The pollution load for the Cloughduv agglomeration arises from the following areas:

- Domestic population
- Commercial premises
- School
- Infiltration

The sewage from all commercial activities is collected via the public sewer and treated in conjunction with the domestic waste at the WWTP.

For inspection purposes only.  
Consent of copyright owner required for any other use.

### **The Technology used :**

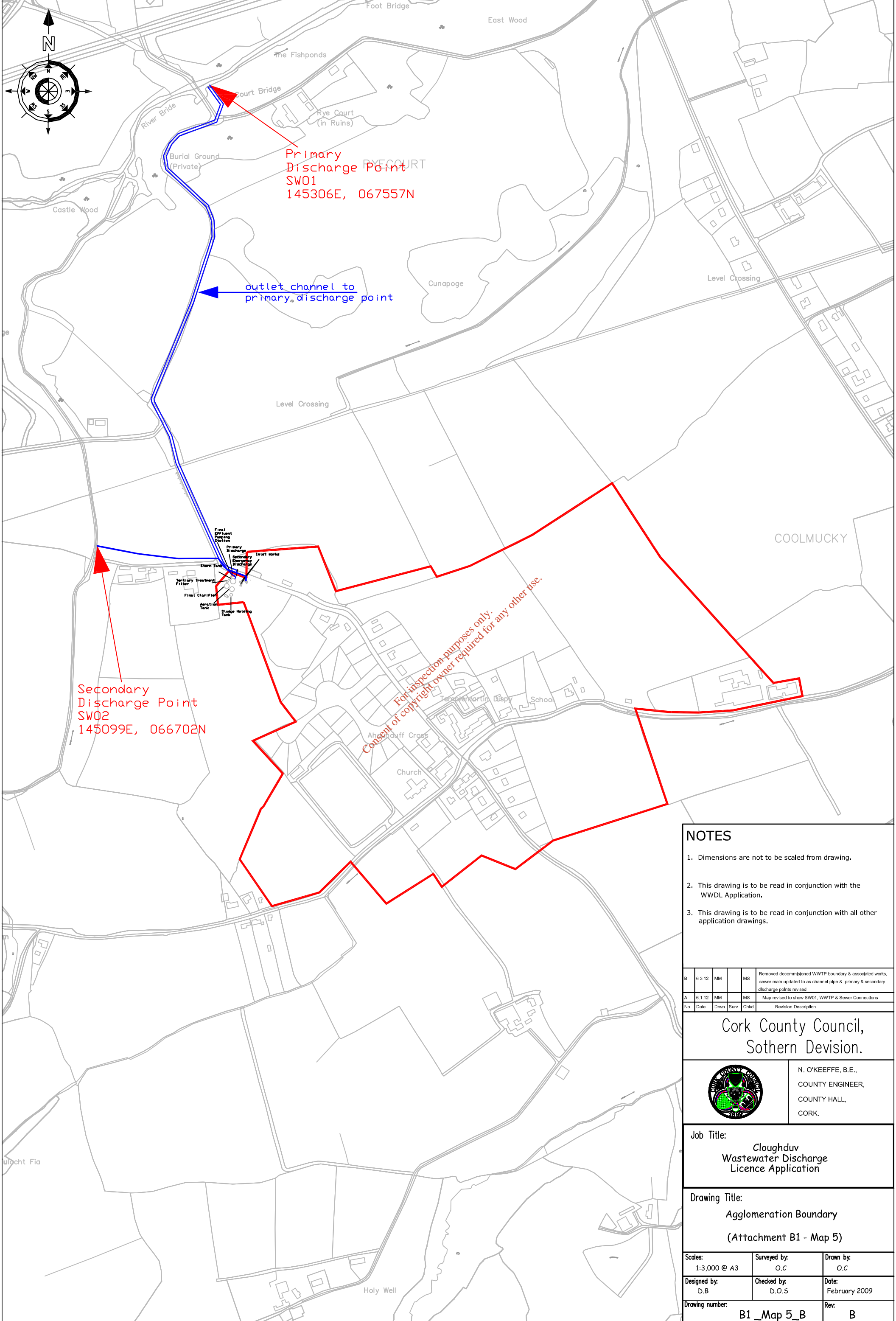
The new WWTP was designed with sufficient number of standby pumps, storm holding facilities, sludge holding facilities, etc which is provided to ensure continuation of the wastewater treatment. The plant incorporates both tertiary treatment in the form of sand filters and phosphorus removal facilities. Both of these technologies have significantly improved the quality of the effluent which is discharged to the Bride River . The design population equivalent of this WWTP is 1,500. It is operated and managed in accordance with the Performance Management System, developed by the Water Service National Training Group (WSNTG).

Standby power generation is being provided as part of the proposed WWTP. It has sufficient capacity to maintain the effluent discharge standards during periods when mains electricity is not available. Chemical storage tanks and dosing equipment is located within lined bunds. An instrumentation and control system together with on site monitoring and sampling is provided to ensure satisfactory operation of the plant.

### **Measures planned to monitor emissions into the environment:**

The Cork County Council Environmental Laboratory carry out sampling of the influent and effluent in the waste water treatment plant for the purposes of this waste water discharge licence. The monitoring is undertaken by Response Engineering, as they are the operating contractor. Response is monitoring the influent and effluent on a daily basis.

The Cork County Council Environmental Department located in Inniscarra takes samples from the Bride River upstream and downstream of the proposed discharge point from the wastewater treatment plant approximately 4 times per year.



Primary Discharge Point SW01  
145306E, 067557N

outlet channel to primary discharge point

Secondary Discharge Point SW02  
145099E, 066702N

For inspection purposes only.  
Consent of copyright owner required for any other use.

- NOTES**
1. Dimensions are not to be scaled from drawing.
  2. This drawing is to be read in conjunction with the WWDL Application.
  3. This drawing is to be read in conjunction with all other application drawings.

B	6.3.12	MM		MS	Removed decommissioned WWTP boundary & associated works, sewer main updated to as channel pipe & primary & secondary discharge points revised
A	6.1.12	MM		MS	Map revised to show SW01, WWTP & Sewer Connections
No.	Date	Drwn	Surv	Chkd	Revision Description

Cork County Council,  
Sothern Devison.



N. O'KEEFFE, B.E.,  
COUNTY ENGINEER,  
COUNTY HALL,  
CORK.

Job Title:  
**Cloughduv  
Wastewater Discharge  
Licence Application**

Drawing Title:  
**Agglomeration Boundary  
(Attachment B1 - Map 5)**

Scales: 1:3,000 @ A3	Surveyed by: O.C	Drawn by: O.C
Designed by: D.B	Checked by: D.O.S	Date: February 2009
Drawing number: <b>B1_Map 5_B</b>	Rev: <b>B</b>	