

### Site Location In Relation to Great Island Channel [00 1058]

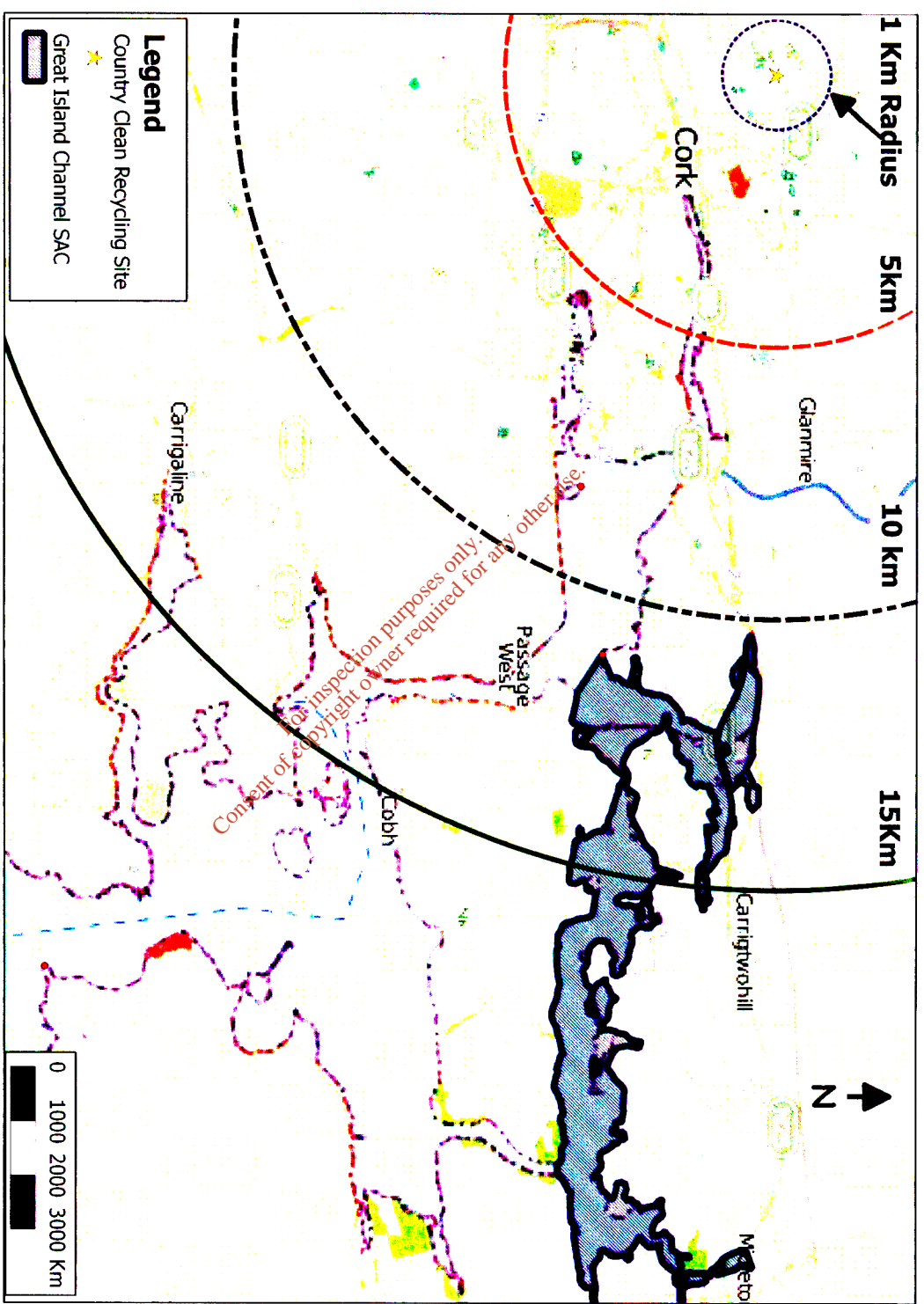


Figure 1 Waste Facility Location in relation to Great Island Channel SAC (001058) at 1km, 5km, 10km, 15km radius

### Site Location In Relation to Cork Harbour SPA [004030]

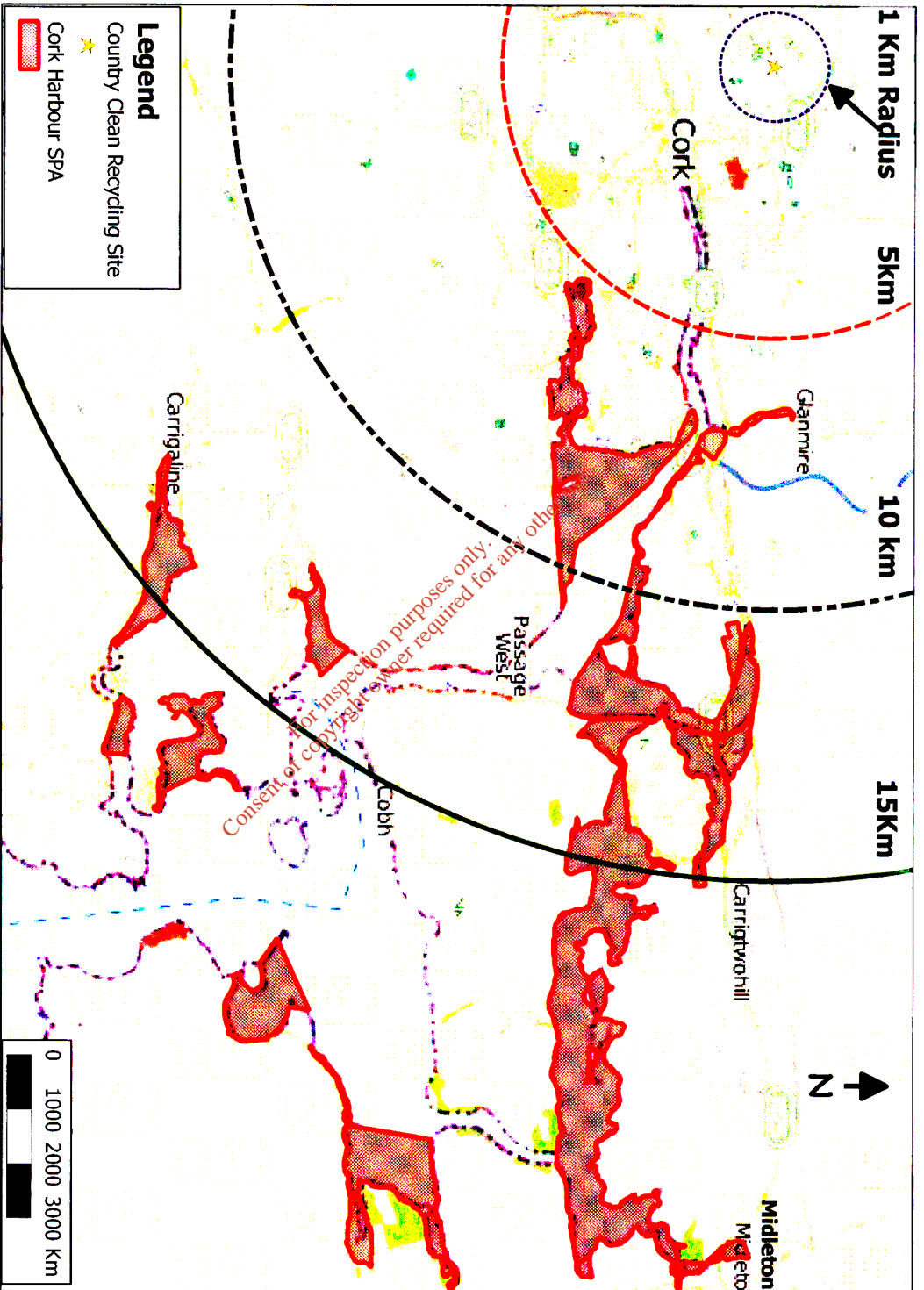
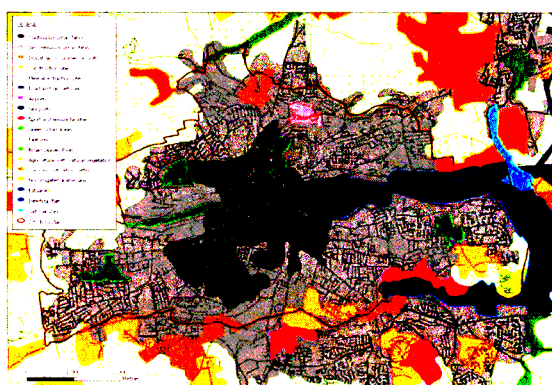
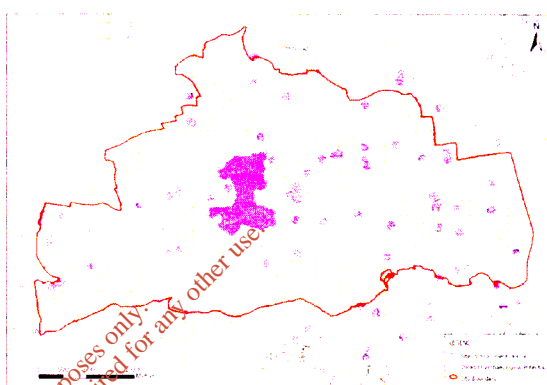


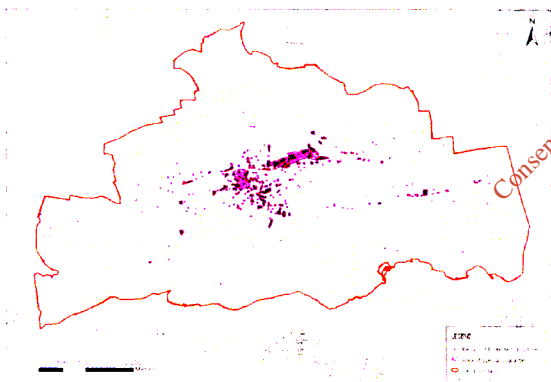
Figure 2 Waste Facility Location in relation to Cork Harbour SPA (004030) at 1km, 5km, 10km, and 15 km radius



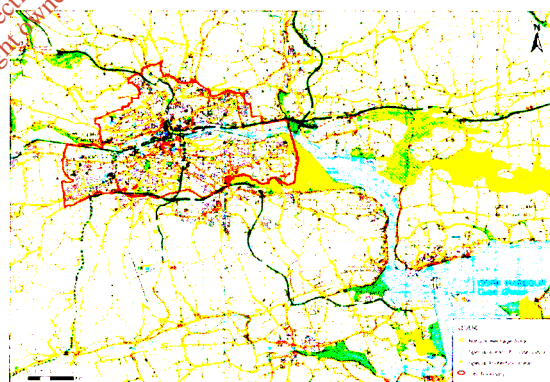
**CORINE Land Cover**



**Archaeological Heritage**



**Architectural Heritage**



**Designated Ecological Sites**

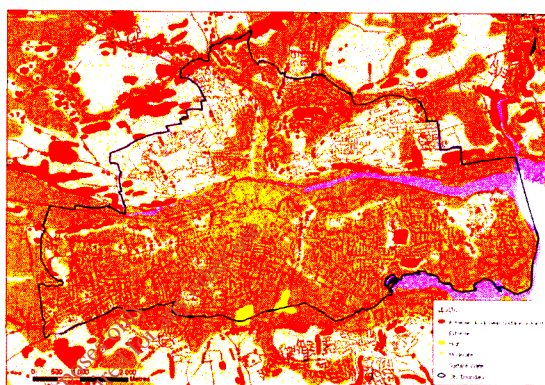
**Figure 2.1 Environmental Sensitivities - Plate 1**  
© AAS for Clark City Council

[BACK TO TOP](#)

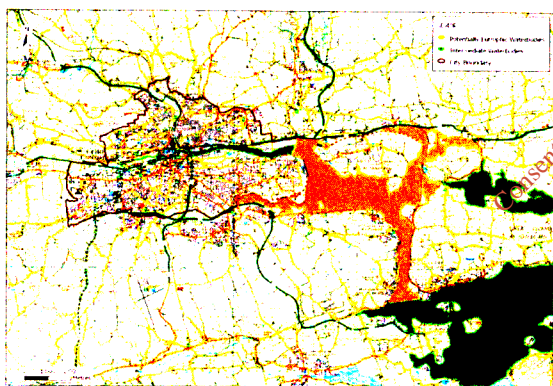




Surface Water Catchment Risk Assessment

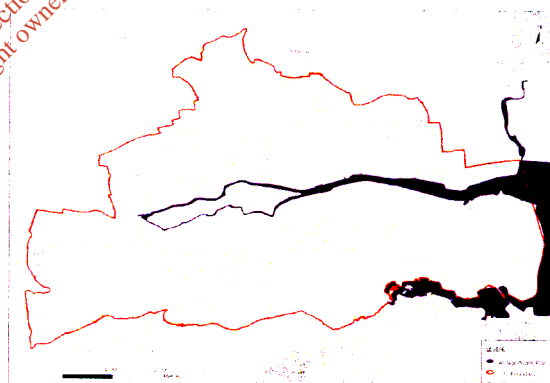


Groundwater Vulnerability



Quality of Transitional Waters

Figure 2.3 Environmental Sensitivities - Plate 3



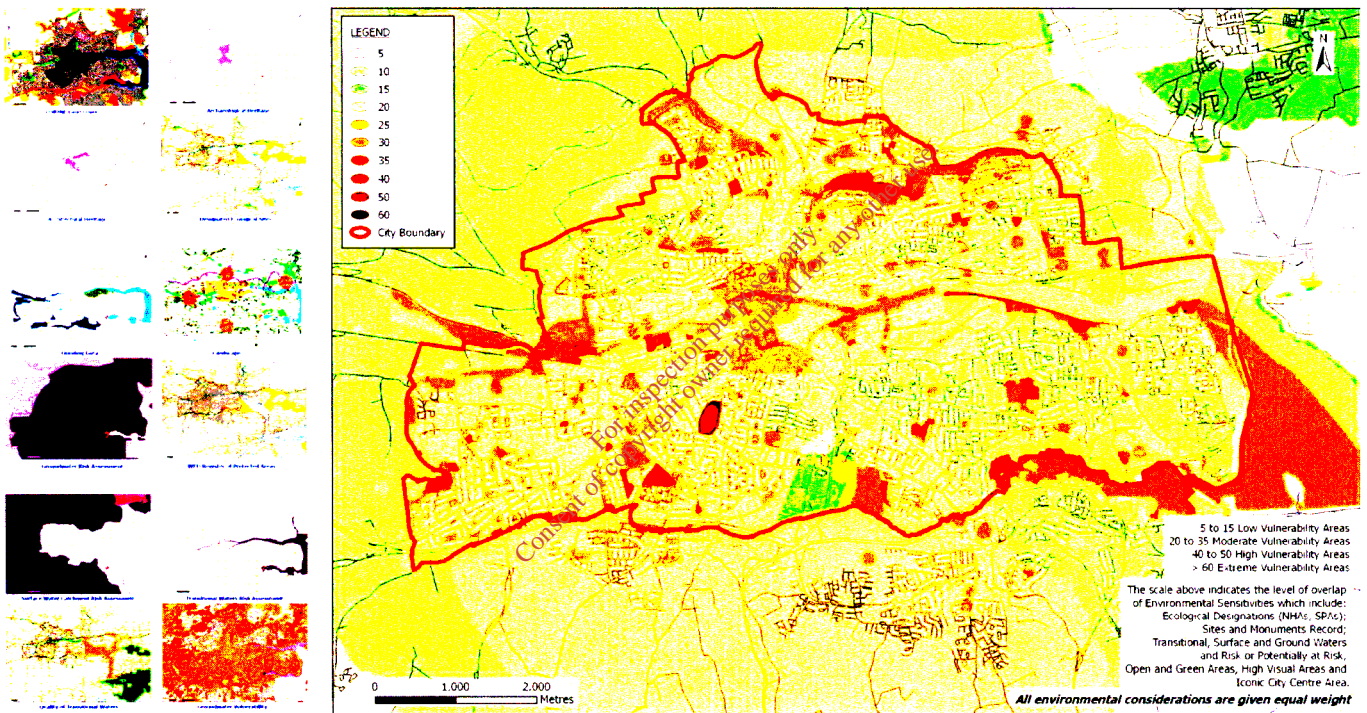
Transitional Waters Risk Assessment

CAAs for Cork City Council

[BACK TO TOP](#)



Maps of sensitivities weighted and mapped overlapping each other in order to identify where most sensitivities within and surrounding the City occur



**Figure 2.4 Overlay of Environmental Sensitivities**

CAAS for Cork City Council

[BACK TO TOP](#)

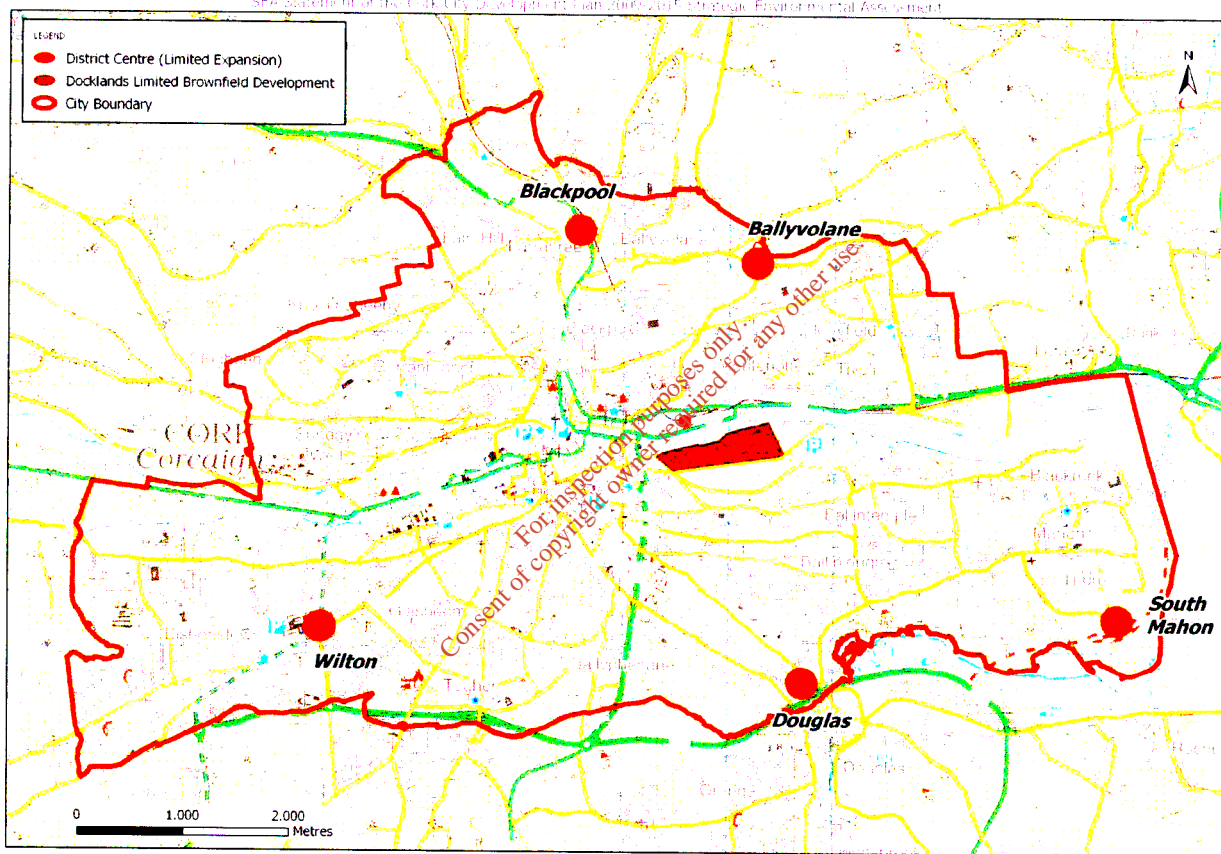


Figure 4.1 Alternative Scenario 1 - Minimalist Approach

[BACK TO TOP](#)

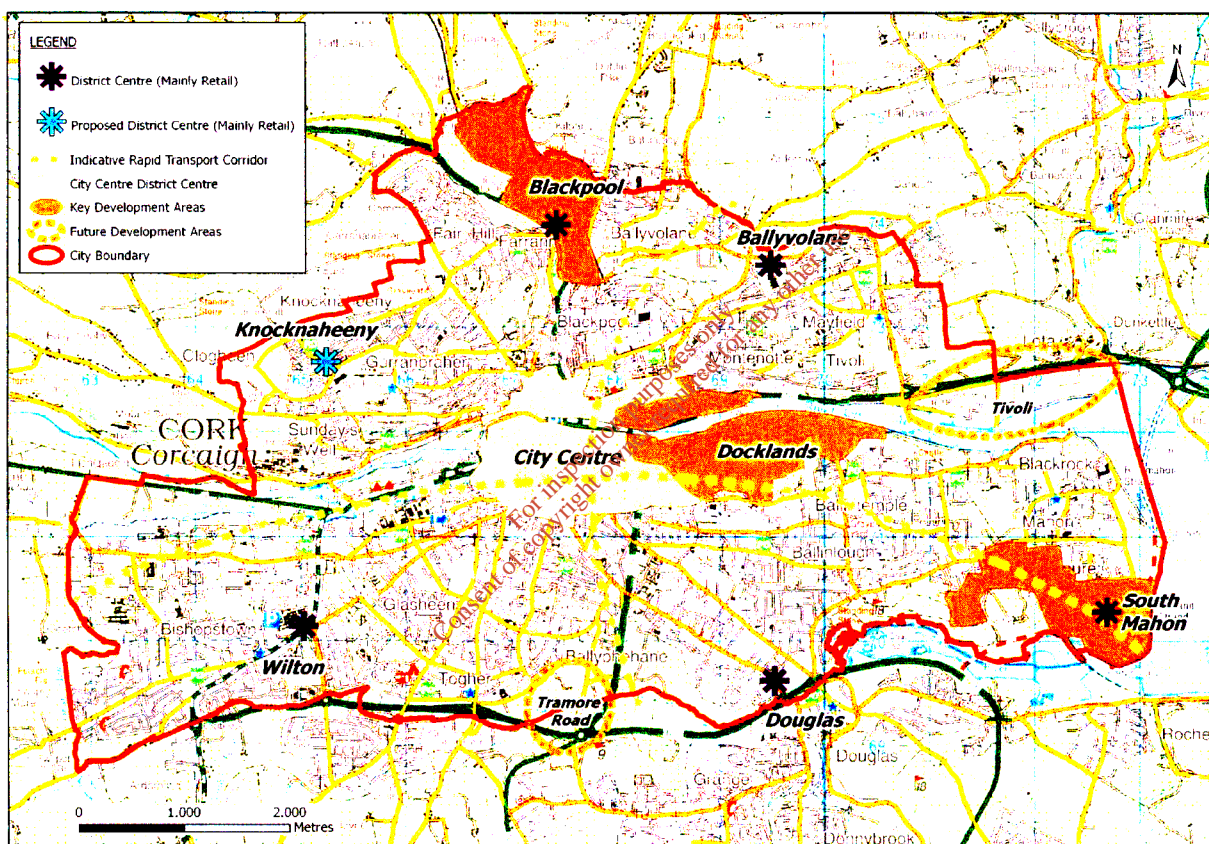


Figure 4.2 Alternative Scenario 2 - Selective Concentrations

[BACK TO TOP](#)







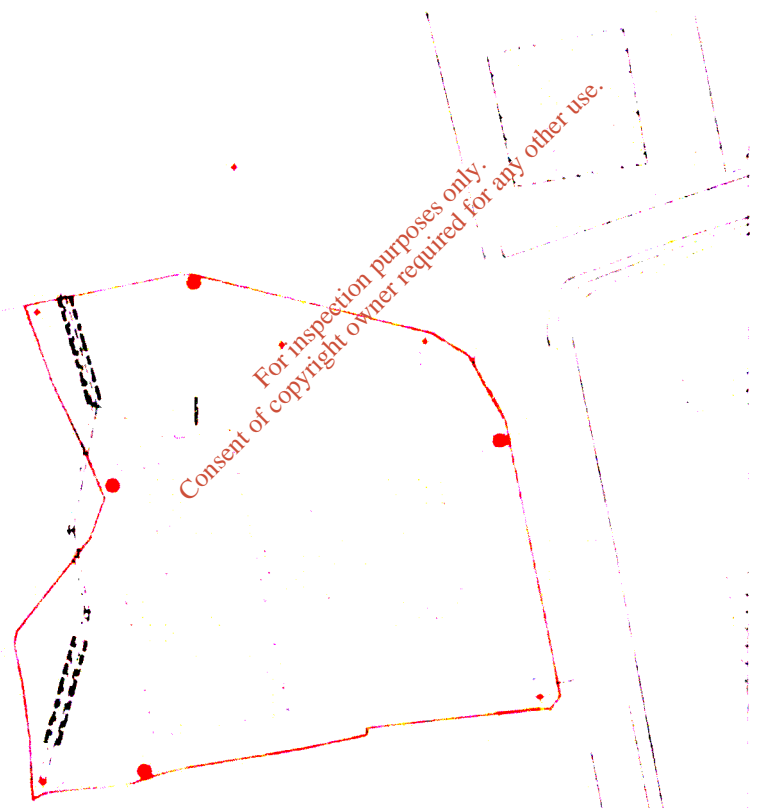




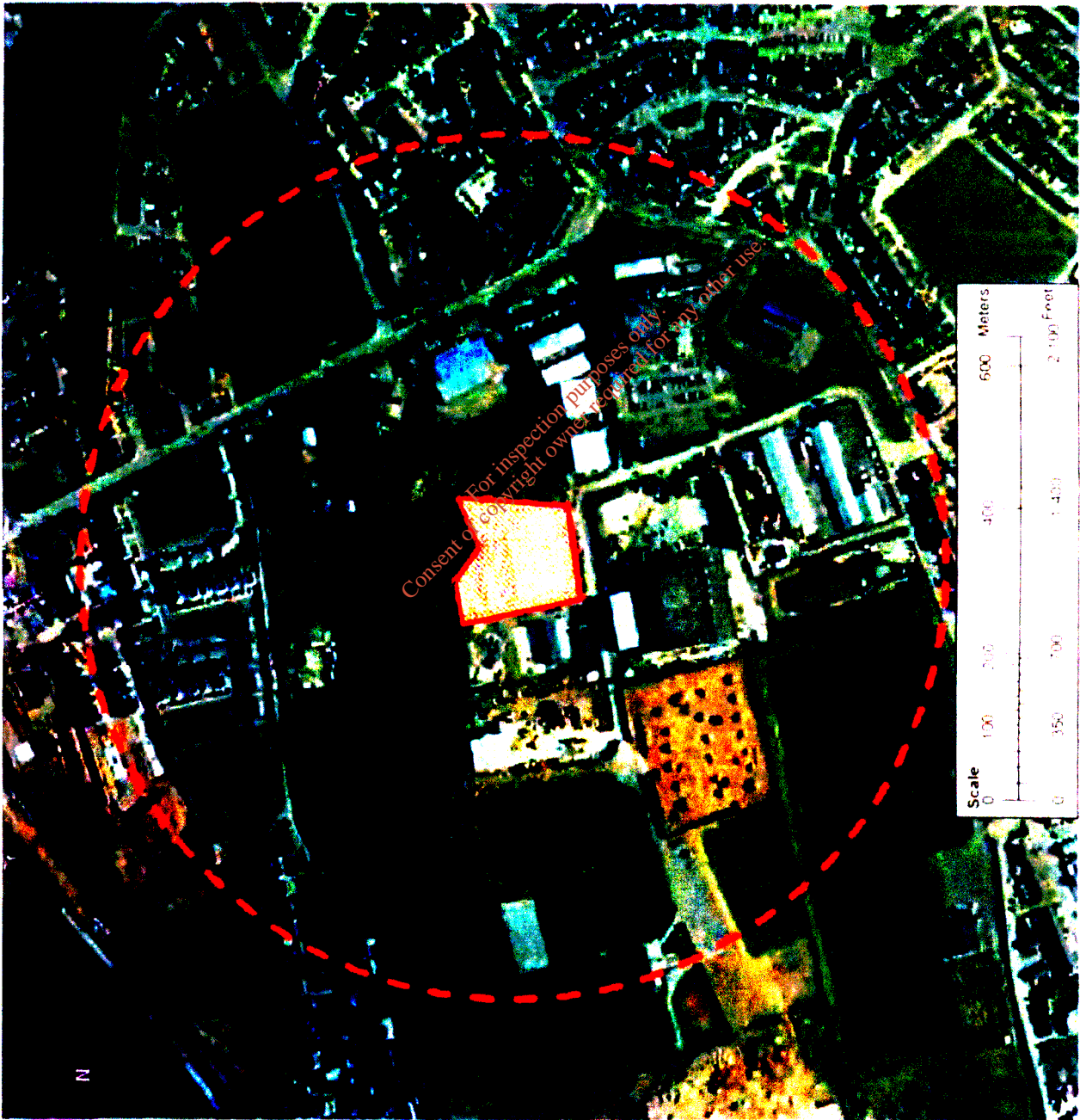
1. The following information was obtained from the records of the  
 2. [illegible] [illegible] [illegible] [illegible] [illegible] [illegible]  
 3. [illegible] [illegible] [illegible] [illegible] [illegible] [illegible]  
 4. [illegible] [illegible] [illegible] [illegible] [illegible] [illegible]  
 5. [illegible] [illegible] [illegible] [illegible] [illegible] [illegible]  
 6. [illegible] [illegible] [illegible] [illegible] [illegible] [illegible]  
 7. [illegible] [illegible] [illegible] [illegible] [illegible] [illegible]  
 8. [illegible] [illegible] [illegible] [illegible] [illegible] [illegible]  
 9. [illegible] [illegible] [illegible] [illegible] [illegible] [illegible]  
 10. [illegible] [illegible] [illegible] [illegible] [illegible] [illegible]

OES

DATE	TIME	OPERATOR	INSTRUMENT	ANALYST







Site Location

1 km radius from site

Country Clean Recycling  
Proximity of Residences within 500m  
from the facility




OES CONSULTING

Country Clean Recycling  
Proximity of Residences within 500m  
from the facility





**Legend**

-  Site Location
-  Natural Heritage Area (NHA)
-  Special Protection Area (SPA)



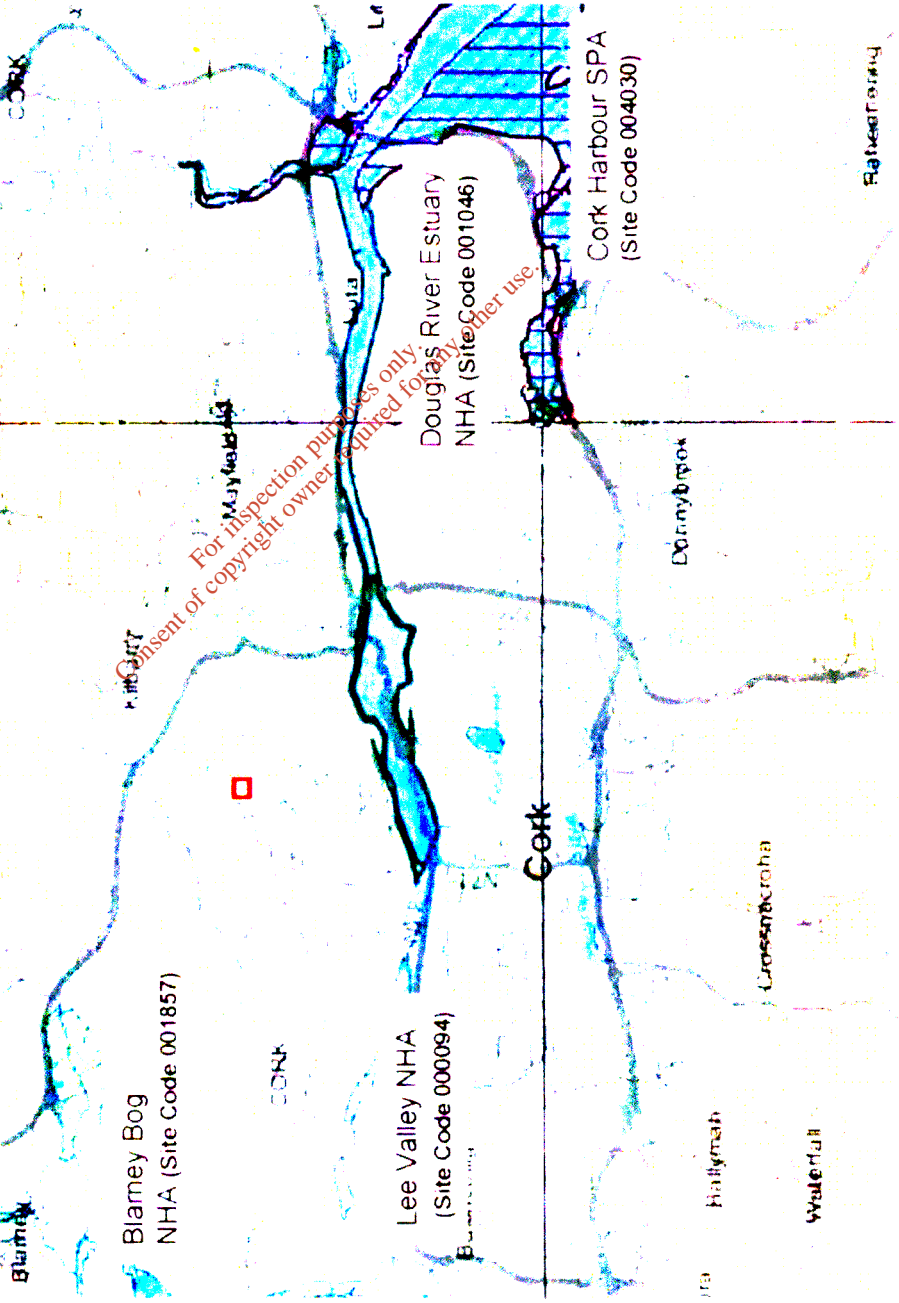
Ardamadane Wood  
NHA (Site Code 001799)

Blarney Bog  
NHA (Site Code 001857)

Lee Valley NHA  
(Site Code 000094)

Cork Harbour SPA  
(Site Code 004030)

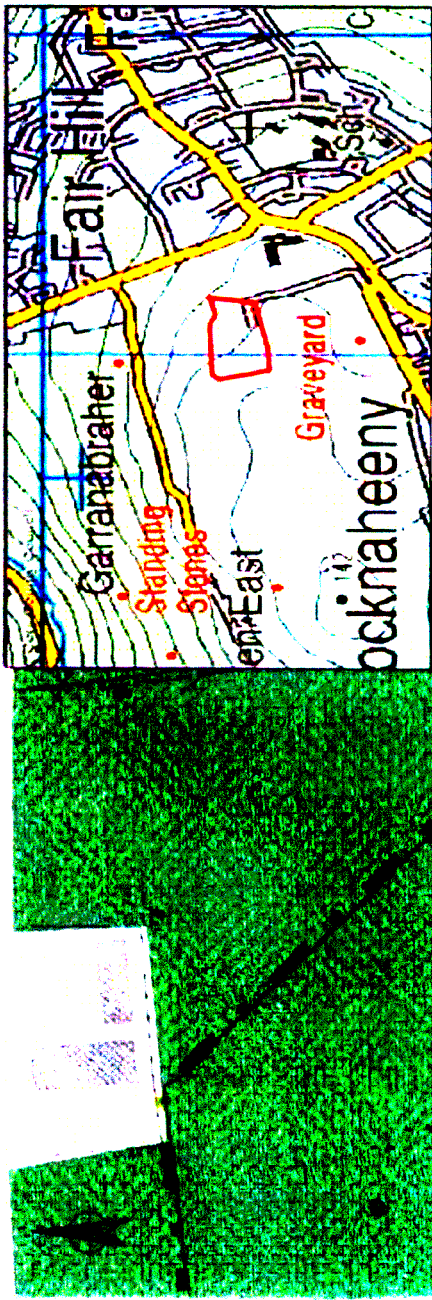
Douglas River Estuary  
NHA (Site Code 001046)






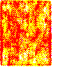

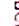
Consent of copyright owner required for any other use.  
 For inspection purposes only

**OES** consulting

County Clean Recycling  
Designated Nature Conservation Sites



Legend

-  Improved Grassland (GA1)
-  Buildings and Artificial Surfaces (BL3)
-  Refuse and other waste (ED5)
-  Recolonising bareground (ED3)
-  Hedgerows W1
-  Site Location






OES consulting

County Clean Recycling

Habitat Map



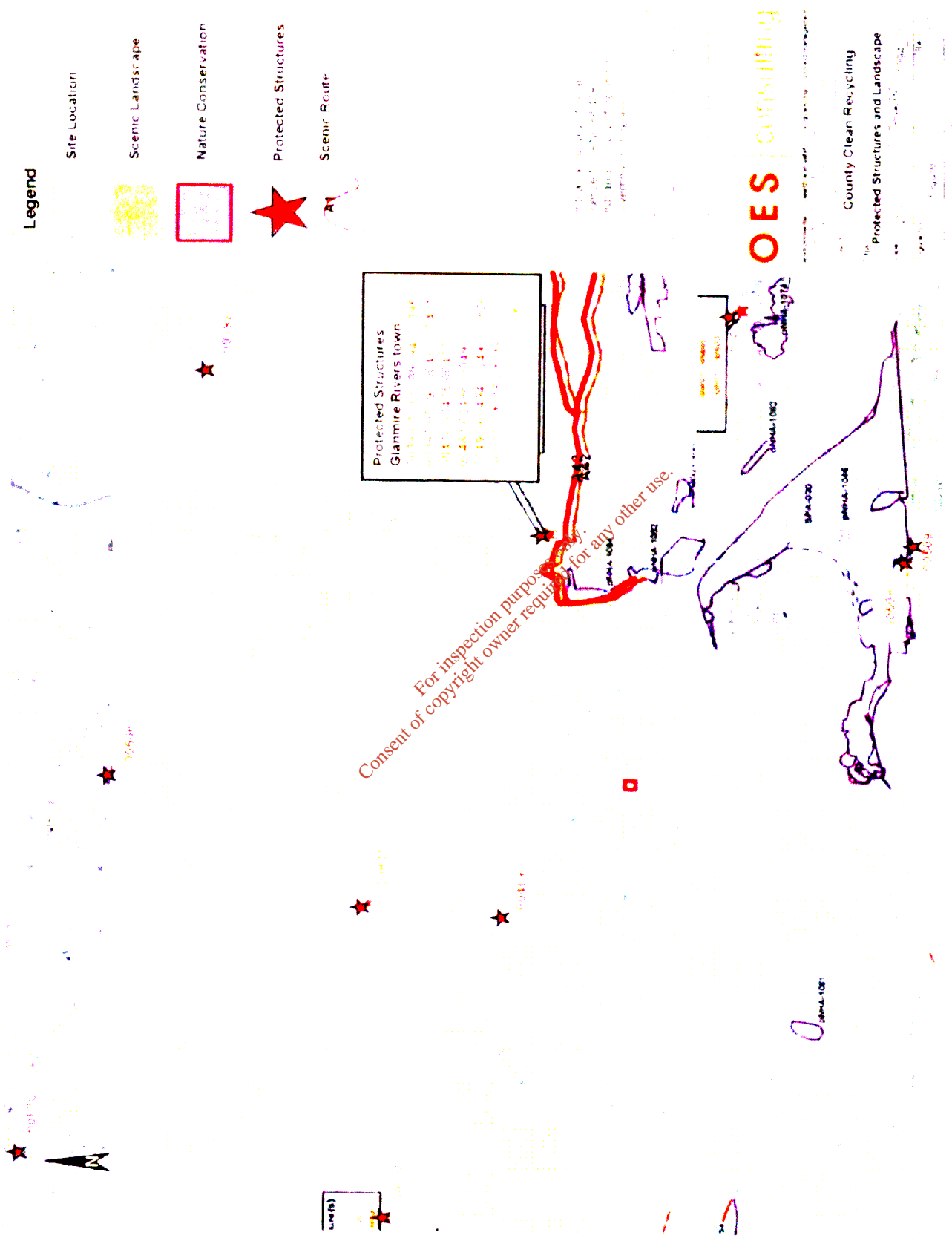
**Legend**

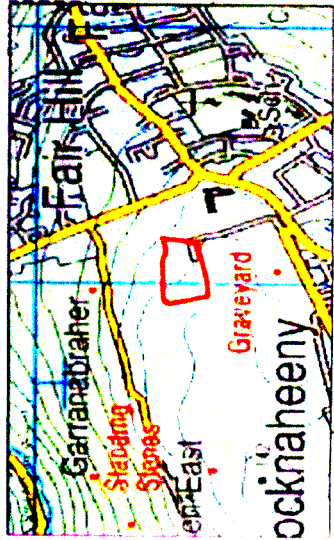
-  Site Location
-  Noise Boundary Locations
-  Noise Sensitive Locations

Site Location  
 Noise Boundary Locations  
 Noise Sensitive Locations

**OES** consulting

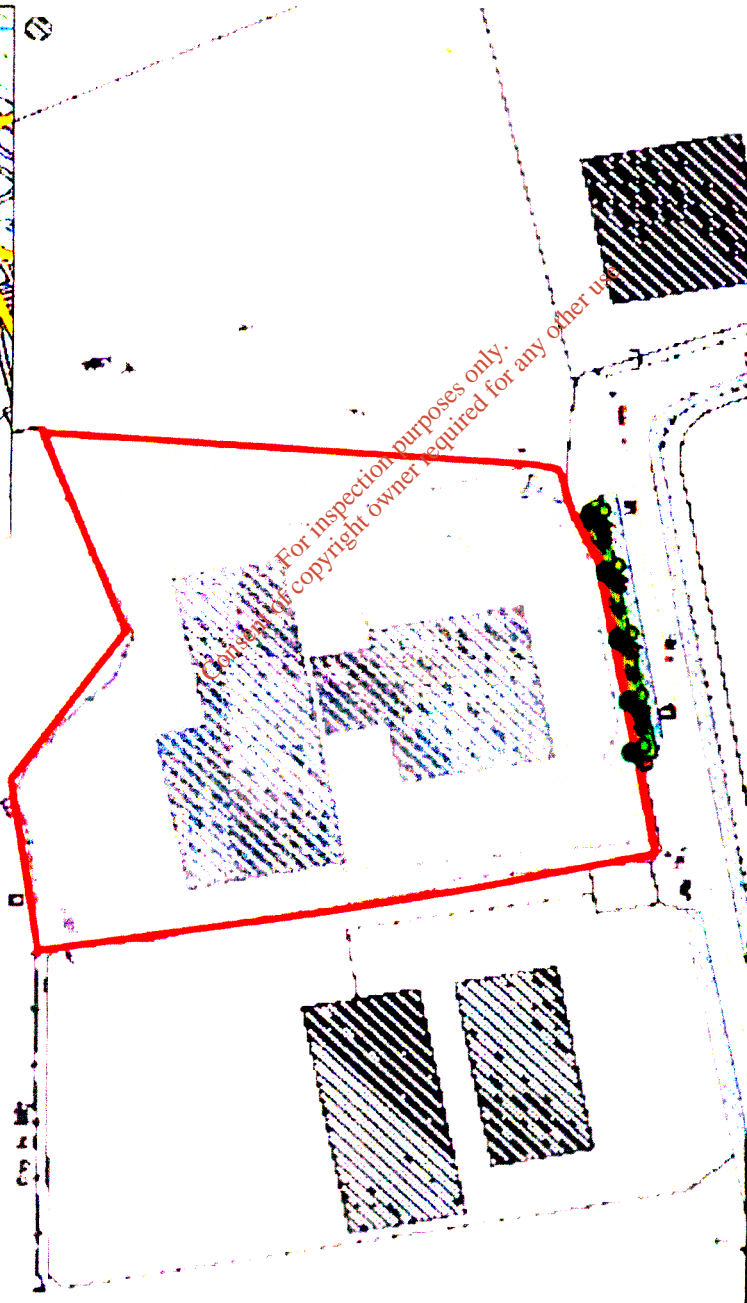
County Clean Recycling  
 Noise Sensitive Locations



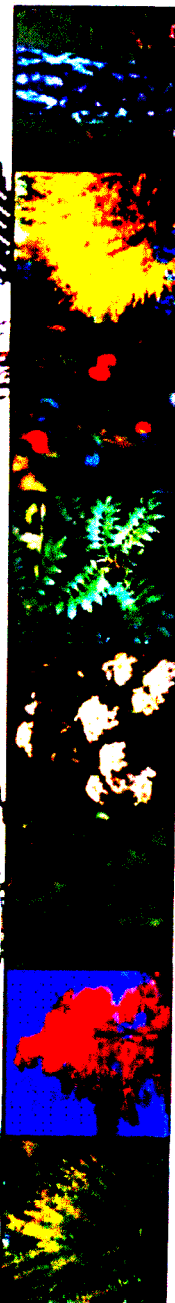


Legend

- Site Location
- Footpath
- Green space
- Roads
- Proposed Tree Planting
- Proposed Shrub Planting

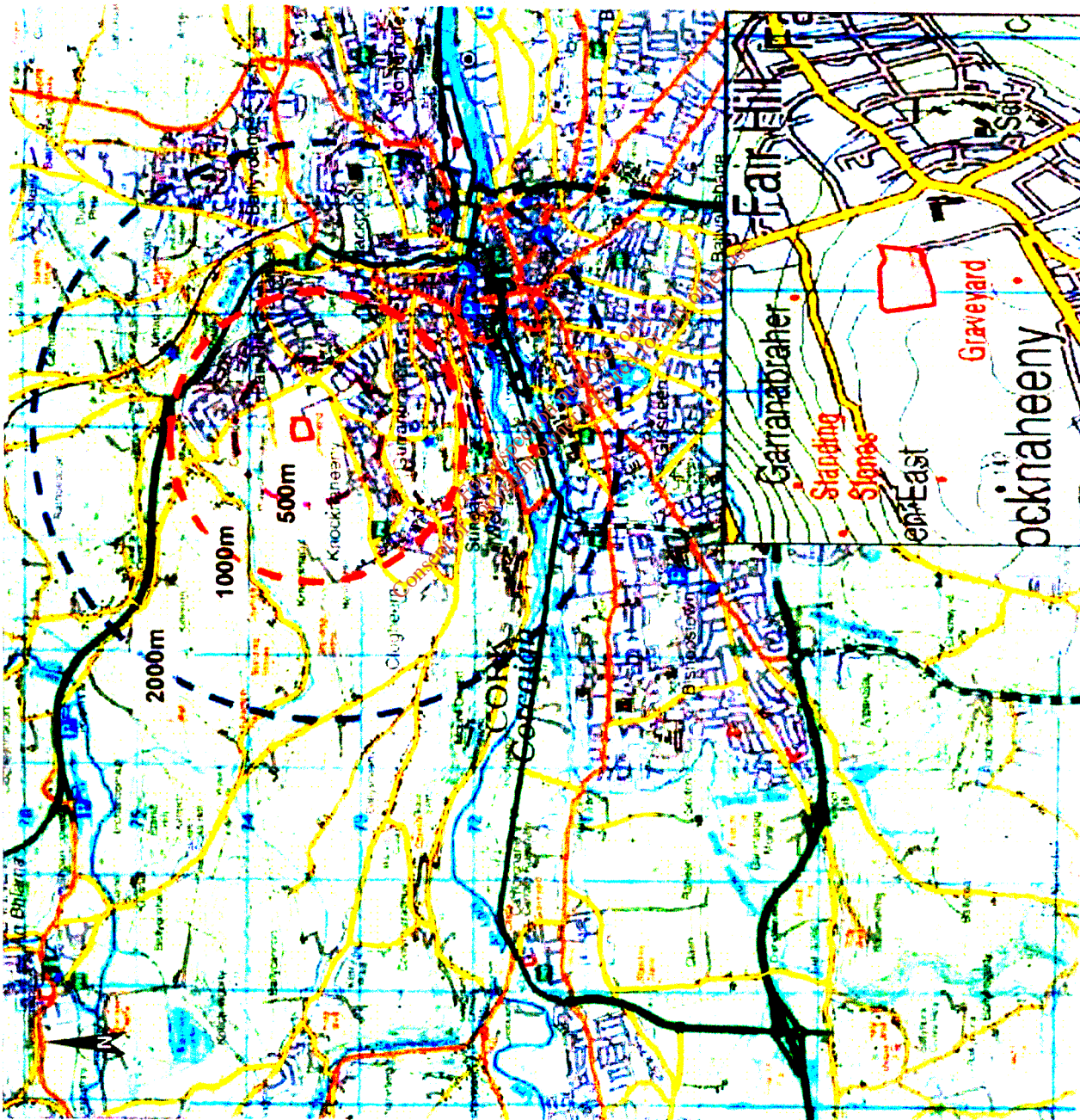


OES consulting



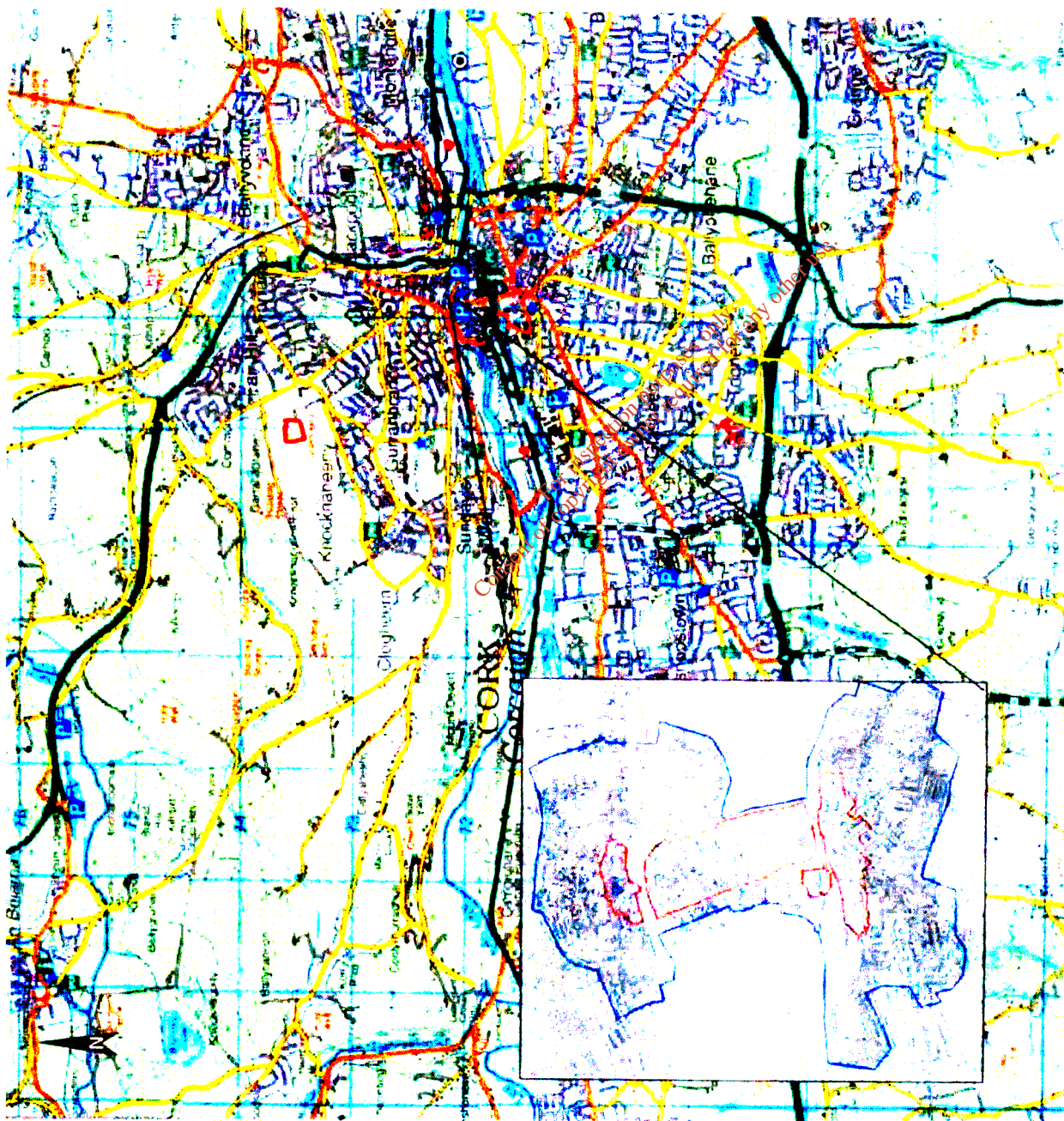
County Clean Recycling  
Landscape Proposal





**OES** consulting

County Clean Recycling  
Zones of Visual Influence



**Legend**

- Site Location
- Primary Archaeological Zone
- Primary Archaeological Zone

© 2012 OES Consulting  
 All Rights Reserved  
 OES Consulting is a registered company in Ireland  
 OES Consulting is a registered company in Ireland

**OES** consulting

County Clean Recycling  
 Cork City Council  
 Archaeological Zonations



**View 1:** View from Lower Kilmore road looking northeast in the direction of Country Clean Recycling Ltd.



**View 2:** View from Bantry Park Road looking northwest in the direction Country Clean Recycling Ltd.





**View 3:** View from Green area behind Bridevally Park looking southwest in the direction Country Clean Recycling Ltd.

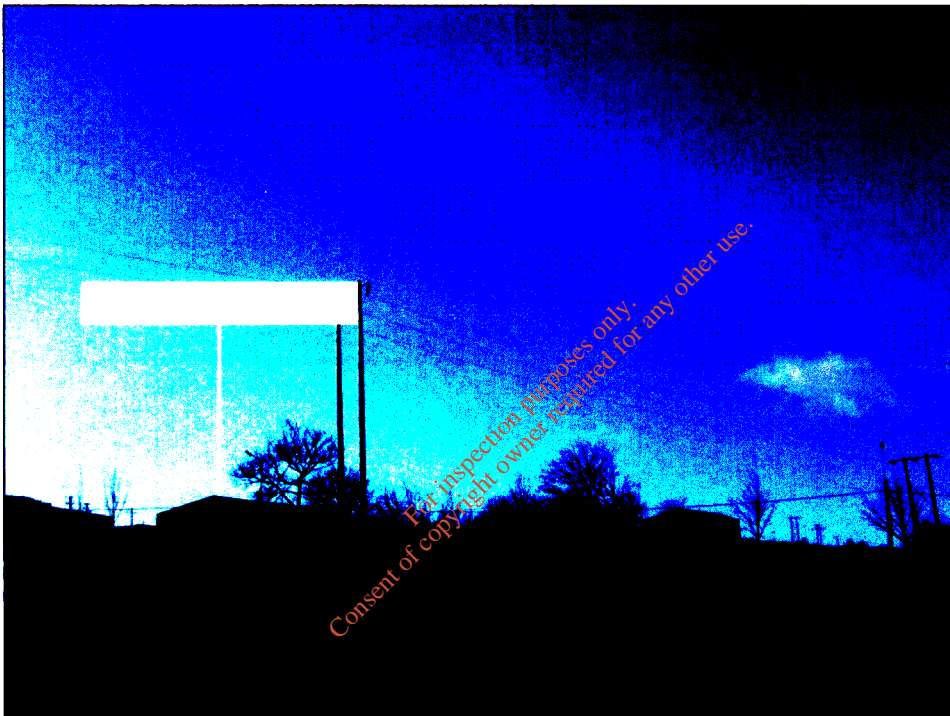




**View 4** : View from Dunnycove Crescent looking northwest in the direction Country Clean Recycling Ltd.



**View 5:** View from Nash's Boreen looking south towards Country Clean Recycling Ltd.



**View 6:** View from Green area near Upper Farhill looking southwest towards Country Clean Recycling Ltd.



**View 7:** View from John F. Connolly Road looking northwest towards the Country Clean Recycling Ltd. site



**View 8:** View from John F. Connolly Road looking east towards the County Clean Recycling Ltd.





**View 9:** View from Ard Alainn, off Upper Fairhill road looking southwest towards Country Clean Recycling Ltd.

## **APPENDIX E**

### **Department of Environment Heritage and Local Government Correspondence in relation to EIS for the expansions of a Materials Recovery Facility.**

*For inspection purposes only.  
Consent of copyright owner required for any other use.*