



# **ANNUAL ENVIRONMENTAL REPORT 2011**

## **GREYHOUND RECYCLING & RECOVERY**

Crag Avenue  
Clondalkin Industrial Estate,  
Dublin 22

**EPA Licence W0205-01**

## CONTENTS

1. Introduction	3
2. Licensed Activities	3
3. Waste Accepted 2011	3
4. Waste Quantities 2011	4
5. Environmental monitoring and emission data 2011	5
6. Resource and energy consumption 2011	7
7. Facility Development works 2011	8
8. Environmental Systems and Procedures	8
9. Environmental Objectives and Targets for 2011	9
10. Incidents 2011	11
11. Complaints 2011	11
12. Odour Management Programme	11
13. Review of nuisance controls.	11
14. Volume of trade effluent / leachate and / or contaminated storm water produced and volume transported off-site	11
15. Financial Provision	12
16. Management and Staffing Structure	13
17. Programme for Public Information	14
18. Residual Management Plan	14
19. Environmental liabilities risk assessment	14
Appendix 1 – PRTR Report 2011	15

## **1. INTRODUCTION**

The following Annual Environmental Report was prepared in accordance with Condition 11.11 and Schedule E of the waste licence W0205-01, and with reference to Environmental Protection Agency guidance on Annual Environmental Reporting. This AER is detailing the activities carried out at the facility in the period from 1<sup>st</sup> September 2011 to 31<sup>st</sup> December 2011.

## **2. DESCRIPTION OF THE SITE AND LICENSED ACTIVITIES**

Greyhound Recycling and Recovery (GRR), Sustainable Resource Recovery Facility at Crag Avenue, Clondalkin Industrial Estate, Dublin 22, is surrounded in Industrial Estate by various warehouses and industrial buildings. The estate is bounded to the west by the M50 Motorway, to the south by the Grand Canal, to the east by Cloverhill Road and to the north by the Dublin-Kildare railway line and Cloverhill Industrial Estate, an industrial estate managed by the IDA.

Greyhound Recycling and Recovery Limited, at Crag Avenue site commenced its operation under the Waste Licence W0205-01 in September 2007. This licence allows to carry out following activities:

- Class 11, 12, and 13 Waste Disposal Activities, in accordance with the Third Schedule of the Waste Management Act, 1996.
- Class 2, 3, 4, 8, 11, 12 and 13 Waste Recovery Activities, in accordance with the Fourth Schedule of the Waste Management Act, 1996.

Greyhound Recycling & Recovery at Crag Avenue, accepts primarily non-hazardous commercial and industrial waste. In 2011 Crag Avenue facility has accepted 19,000 tonnes of residual fraction from household mixed recyclables separation at Dublin City Council, Material Recovery Facility W0238-01. This material was diverted into Solid Recovered Fuel for energy recovery.

Source Segregated Recyclables and Construction and Demolition were not accepted at the facility in 2011.

## **3. WASTE ACCEPTED 2011**

Greyhound Recycling and Recovery Limited accepted the following waste streams during the reporting period:

- Commercial and Industrial waste comprising of source segregated metals and wood, mixed municipal waste and mixed packaging waste
- Mixed Dry Municipal household waste

#### 4. WASTE QUANTITIES 2011

The Greyhound Recycling and Recovery at Crag Avenue is licensed to handle a maximum of 250,000 tonnes of waste per annum. The total quantity of material accepted and processed at the licensed facility during the reporting period was 190,000 tonne. The percentage of recycling and recovery achieved on wastes handled at the facility during the reporting period was 70%. A tabulated breakdown of the quantity and composition of wastes received, recovered, and disposed of, during the reporting period shows table 4.1.

The storage tonnage at the end of 2011 was higher of 870 tonnes than at the end of 2010.

##### 4.1 Waste acceptance and dispatch

EWC Code	Description of Waste	Waste in (tonnes)	Waste out (tonnes)	Recovery Disposal	%
02 07 04	Oat and wheat grains	154			
13 05 03	interceptor sludge		82	Disposal	0.04%
15 01 01	cardboard cores	114	114	Recovery	0.05%
15 01 03	wooden pallets	2,298	2,090	Recovery	0.97%
15 01 04	metal drums and cages	42			
15 01 05	Labels	49			
15 01 06	mixed dry recyclables	11,601	11,552	Recovery	5.35%
16 06 01	lead batteries	194	193	Recovery	0.09%
17 04 01	Copper pipes, copper cylinders & other copper scrap	1,335	1,295	Recovery	0.60%
17 04 02	Aluminium frames, fascia, soffits and other aluminium scrap	2,185	1,983	Recovery	0.92%
17 04 05	Iron & steel scrap from C&D	3,803	3,783	Recovery	1.75%
17 04 07	mixed non-hazardous, non-ferrous metals	1,649	2,085	Recovery	0.97%
19 12 08	shredded clothing	12			
19 12 10	Off spec SRF		305	Disposal	0.14%
19 12 10	Solid Recovered Fuel (SRF)	13,363	99,966	Recovery	58.40%
19 12 12	organic screenings		14,795	Disposal	6.85%
19 12 12	organic screenings	27	4,115	Recovery	1.91%
19 12 12	residuals from MDR processing	19,138	3,303		1.53%
19 12 12	heavy residuals from SRF processing		12,315	Disposal	5.70%
20 01 08	canteen waste,	222			
20 01 35*	mixed WEEE such as: white goods, TVs, monitors, PCs, fridges, other	25	15	Recovery	0.01%
20 01 36	mixed WEEE		3	Recovery	0.00%
20 01 39	hard plastics: toys, pipes, crates, plates	110	43	Recovery	0.02%
20 01 40	source segregated metals	533	506	Recovery	0.23%
19 12 02	metals separated from MMW		1,186	Recovery	0.55%
20 03 01	MMW mainly from commercial and industrial sources	140,255	30,042	Disposal	13.92%
	<b>Total</b>	<b>197,109</b>	<b>189,771</b>		
					100.00%

## 5. ENVIRONMENTAL MONITORING AND EMISSIONS DATA

Monitoring of emissions from the facility during the reporting period was carried out in accordance with Condition 8 and Schedule B and C of Greyhound Recycling and Recovery Ltd. waste licence W0205-01.

### Dust deposition monitoring

The dust monitoring was carried out on two occasions at two locations in October 2011 and November 2011. The dust deposition did exceed the licensed limits in monitoring point D1 during October 2011. This exceedance was caused by birds droppings as explained in dust monitoring report. The results of the dust monitoring are shown in the below table.

Table 5.1

Monitoring Period		D1	D2
		ELV 350 mg/m <sup>2</sup> /d	ELV 350 mg/m <sup>2</sup> /d
From	To	mg/m <sup>2</sup> /d	mg/m <sup>2</sup> /d
28/09/2011	25/10/2011	693	68
25/10/2011	22/11/2011	230	125

### Foul Sewer discharge monitoring

In accordance with Waste Licence W0205-01 the wastewater monitoring should be carried out monthly. Greyhound analysed trade effluent eleven times in 2011.

In March 2011 Greyhound submitted insufficient amount of sample for analysis and the laboratory couldn't carry out requested range of analysis.

All samples were taken from the Sewer Emission Monitoring point SE1.

The results of the analysis are shown in the table 5.2.

### Surface Water discharge monitoring

In accordance with Waste Licence W0205-01 the surface water monitoring should be carried out quarterly. Greyhound analysed storm water 6 times in 2011. In addition the colour, smell and conductivity was examined on a daily basis by the Site Supervisor.

All samples were taken from the Storm Water Monitoring point SW1. The results of the analysis are shown in Table 5.3.

Table 5.2

Date sampled	BOD	COD	Suspended Solids	Oil fats & greases	pH	Sulphates	Mineral oil	Phosphates	Detergent
<b>ELV(mg/l)=&gt;</b>	<b>2000</b>	<b>8000</b>	<b>2000</b>	<b>200</b>	<b>6-10</b>	<b>500</b>	<b>10</b>	<b>100</b>	<b>100</b>
20/01/2011	100	150	49	<1	6.6	49	0.03	1	0.3
28/02/2011	145	700	373	42	7.1	203	1	1	23
31/03/2011	-	-	-	-	-	-	1	-	-
29/04/2011	10	25	14	<1	7.4	33	0.01	1	0.2
25/05/2011	120	757	233	7	12	97	0.08	14	0.4
23/06/2011	158	566	164	14	6.7	48	2.5	4.4	0.3
05/09/2011	26	121	74	<1	7.1	36	0.05	6	0.1
20/10/2011	280	927	116	15	6.5	72	0.02	23	0.06
09/11/2011	165	252	82	1	6.6	61	0.05	3	0.5
03/01/2012	2850	3445	488	34	6.3	224	0.01	0.8	0.1

Table 5.3

Date sampled	pH	COD	Suspended Solids	Oils, Fats and Greases
18/04/2011	7.3	81	21	<1
11/05/2011	7.3	101	30	<1
23/06/2011	7.3	13	8	<1
05/09/2011	6.2	152	14	<1
30/09/2011	7.1	65	33	<1
03/01/2012	7.2	73	55	<1

### Noise Monitoring

In accordance with Waste Licence W0205-01 the noise monitoring should be carried out annually, during night and day activity. In 2011 noise monitoring was carried out on 20<sup>th</sup> and 21<sup>st</sup> October 2011 by Enviroglan in 5 monitoring points. Noise characteristics of the area are typical of an industrial estate zoned for light industrial activity. Additional noise sources emanated mainly from motor way M50 which is 100m away from Greyhound's boundary and also from nearby passing trains, and overhead aircraft and banging sounds associated with industrial activity. Existing road traffic was the dominant noise source for the majority of the time. The ambient noise in this industrial area is above the licence limitation of W205-01 which makes impossible to not to exceed the noise limits levels in any of the monitoring points. The results of the noise monitoring are shown in the below table.

Table 5.4

Monitoring location	Day /Night period	L <sub>Aeq</sub> dB(A)	L <sub>A90</sub> dB(A)	L <sub>A10</sub> dB(A)
Noise Emission Limits		Daytime dB(A) L <sub>Aeq</sub> (30 minutes)	55 dB(A)	
		Night-time dB(A) L <sub>Aeq</sub> (30 minutes)	45 dB(A)	
N1	Day	64.8	53.1	67.9
	Night	54.1	47.5	54.9
N2	Day	67.7	61.6	70.4
	Night	59.7	51.2	62.7
N3	Day	55.4	52.6	56.8
	Night	52.8	49.6	54.3
N4	Day	61.7	53	65.3
	Night	56	48.5	59.1
N5	Day	61.7	55.8	61.2
	Night	56.2	47.8	58.4

## 6. RESOURCE AND ENERGY CONSUMPTION

Since September 2011 all fixed machinery plant is powered by electricity. Only mobile plant use gas oil on site.

Data on resource, energy and primary raw material consumption for the reporting period is presented in Table 6.1 (below).

Table 6.1: Resource and Energy Usage in 2011.

Raw Material/Resource	Application	Consumption
Detergent	Vehicle and plant washing	800 litres
Deodorising liquid	Misting system	2900 litres
Electricity	Office and plant.	3945MWh
Mains water	Washing, Site cleaning, NAPS washing, misting system.	10319 cubic meters
Hydraulic Oil	Process plant and fleet vehicles.	12,000 litres
Engine Oil	Process plant and fleet vehicles.	2300 litres
Marked Diesel	Mobile plant machinery	339,000 litres

## 7. FACILITY DEVELOPMENT WORKS.

The developments undertaken in the reporting period is presented in Table 7.1(below).

Table 7.1 Development Works undertaken during the reporting period.

Project Objective	Works undertaken
Decrease of nuisance emission	<ul style="list-style-type: none"><li>• In-situ carbon regeneration of NAPS</li><li>• Re-installation of misting system on the North outside wall of SRF processing building</li><li>• Installation of new doors at the WBR2</li></ul>

## 8. ENVIRONMENTAL SYSTEMS & PROCEDURES

Greyhound Recycling and Recovery Ltd. facility at Crag Avenue hold ISO9001 and ISO14001 management system accreditations. All reviews, amendments, and implementations of quality and environmental procedures are undertaken within the framework of the ISO9001 and ISO14001 management systems. In 2011 Greyhound introduced plan of integration of both management systems including main structure principals of ISO18001.

The following new environmental related procedures were created:

CR-106 TFS Notification Procedure

CR-207 Interceptor Monitoring and Maintenance

CR-307 Cleaning Procedure for WRB2

CR-308 SRF Bale Loading Procedure

CR-309 Removal of Blockages from Shredders

AG-112 Training Procedure



9. ENVIRONMENTAL OBJECTIVES AND TARGETS FOR 2012

No.	Aspect(s)	Objective	Target	Due
1	Waste Management	Ensure the most efficient and environmentally sustainable management of client waste streams.	Install additional equipment in the SRF Laboratory to carry out CV and Chloride analysis on a daily basis.	Project on hold
			Prepare project for SRF drying	Project on hold
			Prepare project of SRF gasification	Project on hold
2	Air	Reduce odour emissions from waste handling and processing activities	Regenerate the activated carbon in the existing Negative Air Pressure System (NAPS)	April 2012
			Design and Installation of NAPS phase 1 Upgrade	September 2012
			Expand the monitoring parameters of upgraded NAPS.	September 2012
			Replace doors 7, 11, 12	April 2012
			External odour monitoring spot check programme	Ongoing
			Installation of additional external odour control misting units	May 2012
			Feasibility Project to spray incoming and outgoing trucks to reduce odour	August 2012
3	Water / Oil	Prevent surface water contamination, decrease emission values to storm water and sewer	Installation of composite sampler at SE1	September 2012
			Retrain all operatives on Spillage Response and Bunds usage	ongoing
			Review of storm water system at the facility. Carry out CCTV survey of all surface water lines. Prepare Storm Water prevention plan	May 2012
			Prepare plan for quality control of surface water discharge from Yard 2 North.	May 2012

			Bunds repair programme	July 2012
			Bunds integrity retesting	August 2012
			Upgrade water treatment unit at the truck wash bay.	May 2012
4	Traffic	Achieve organized, efficient and safe movement of cars, trucks and machinery on site minimising noise and emissions	Repair existing traffic control units. New traffic management plan for the site	October 2012
			Repair concrete area in Yard 2 North	April 2012
			Identify areas for further concrete improvement works	Ongoing
5	Infrastructure & Systems	Environmentally efficient and Safety management of waste operation	Installation of cover over the Diesel Bund	November 2012
			Installation of Audible and Visual Door alarms	April 2012
6	Resource use and Energy Efficiency	Identify opportunities for energy use reduction and efficiency. Identify opportunities for reduction in the quantity of water used on site	Review the Project plan for Water Conservation from 2011	June 2012
7	Integrated Management System	Achieve better communication between departments. Increase control of compliances with the Waste License	Integrate Environmental and Quality Management Systems	January 2012
			Review of all used forms and create new where necessary	April 2012
			Carry out all scheduled audits, reviews, meetings, updates and trainings as Management System requirements	ongoing
			Creation new environmental procedures: <ul style="list-style-type: none"> <li>• SRF Bale loading procedure</li> <li>• Cleaning procedure for WBR2</li> <li>• SRF shredder cleaning procedure</li> </ul>	March 2012
			Circulation and training of reviewed/new procedures	May 2012
			Update Legislation Register and Environmental Aspects and impacts. Complete new company policies.	January 2012

## **10. INCIDENTS**

There were four non odour related environmental incident on site in 2011. The incidents were related to doors breakdown, unapproved storage and smoke at the facility.

## **11. COMPLAINTS**

Facility has received 68 of complaints during the reporting period.

57 of them were made directly to Greyhound Recycling and Recovery and 11 via EPA.

All 68 complaints received during the reporting period were related to odour. All complaints were recorded and followed with the appropriate measurements.

## **12. ODOUR MANAGEMENT PROGRAMME**

The odour management programme for licensed facility was submitted to the Agency on 25<sup>th</sup> September 2009. In 2011 the following works were done to improve the Negative Air Pressure System (NAPS) operation:

- In August the NAPS Procedure was revised and amended in accordance with laboratory analysis and tests results on GRR carbon chemical regeneration.
- In August-September GRR carried out full washing and regeneration of the carbon. For this purpose was used around 100-150 cu meters of water, 7000 liters of caustic soda and 2000 liters of Methanol
- IPEC prepared general programme for upgrading of existing system as well as additional parallel unit for better air treatment including stack discharge
- Odour Monitoring Ireland prepared Odour Impact assessment for the project of upgrading NAPS

## **13. REVIEW OF NUISANCE CONTROLS.**

Pest contractor, Pest Guard carried out 9 visits to control vermin, during which rebate rat poison in the boxes, replaced broken boxes or installed additional where required.

Other pest control contractor Rentokil visited Greyhound facility 36 times to spray the sheds on flies.

## **14. VOLUME OF TRADE EFFLUENT/LEACHATE AND OR CONTAMINATED STORM WATER PRODUCED AND VOLUME TRANSPORTED OFF-SITE**

The following amount of effluent was sent off site during the 2011 reporting period:

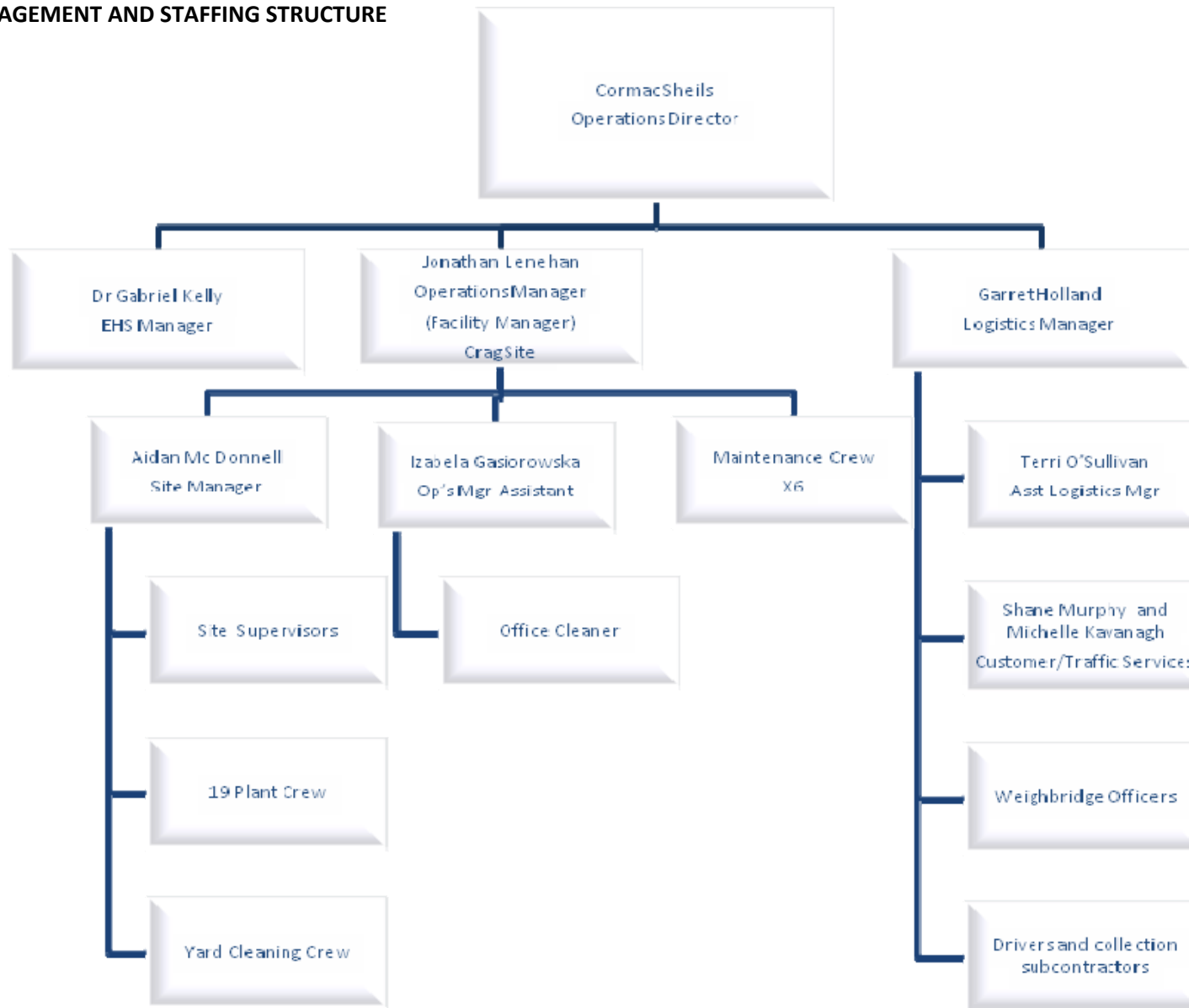
- 79 tonnes of interceptor sludge to Rilta Environmental
- 3 tonnes of interceptor sludge to Enva Ireland Ltd.

## **15. FINANCIAL PROVISION**

Greyhound Recycling and Recovery Ltd. public and product liability indemnity limit is up to €6,500,000. In terms of environmental pollution the indemnity applies to damage to any buildings or other structures or of water or land or atmosphere caused by pollution or contamination. The policy covers pollution caused by a sudden, identifiable, unintended and unexpected event and not gradual pollution. This cover will be in excess of any environmental liability that may arise due to such incident.

All trans-frontier shipment of non-green list material undertaken by Greyhound Recycling and Recovery is effected under a financial guarantee calculated on the cost for return and disposal of material where warranted.

16. MANAGEMENT AND STAFFING STRUCTURE



#### **17. PROGRAMME FOR PUBLIC INFORMATION**

Greyhound Recycling and Recovery Limited maintains a *Public Information File* at the licensed facility. This file contains specified information relating the environmental performance of the Company. The file is available for inspection by the public on request at the facility. No public requests for information were received during the reporting period.

#### **18. RESIDUALS MANAGEMENT PLAN**

The recent Residual Management Plan was submitted to the Agency in October 2010

#### **19. ENVIRONMENTAL LIABILITY RISK ASSESSMENT**

The Environmental Liability Risk Assessment was submitted with AER for 2009. There were no major changes in the environmental liabilities in 2011.

# **Appendix 1**

## **PRTR REPORT 2011**

# AER Returns Workbook

<b>REFERENCE YEAR</b>	2011
-----------------------	------

## 1. FACILITY IDENTIFICATION

Parent Company Name	Greyhound Recycling and Recovery
Facility Name	Greyhound Recycling & Recovery
PRTR Identification Number	W0205
Licence Number	W0205-01

### Waste or IPPC Classes of Activity

No.	class_name
4.4	Recycling or reclamation of other inorganic materials.
3.11	Blending or mixture prior to submission to any activity referred to in a preceding paragraph of this Schedule.
3.12	Repackaging prior to submission to any activity referred to in a preceding paragraph of this Schedule.
3.13	Storage prior to submission to any activity referred to in a preceding paragraph of this Schedule, other than temporary storage, pending collection, on the premises where the waste concerned is produced.
4.11	Use of waste obtained from any activity referred to in a preceding paragraph of this Schedule.
4.12	Exchange of waste for submission to any activity referred to in a preceding paragraph of this Schedule.
4.13	Storage of waste intended for submission to any activity referred to in a preceding paragraph of this Schedule, other than temporary storage, pending collection, on the premises where such waste is produced.
4.2	Recycling or reclamation of organic substances which are not used as solvents (including composting and other biological transformation processes).
4.3	Recycling or reclamation of metals and metal compounds.
4.8	Oil re-refining or other re-uses of oil.
Address 1	Crag Avenue
Address 2	Clondalkin Industrial Estate
Address 3	Clondalkin
Address 4	Dublin 22
	Dublin
Country	Ireland
Coordinates of Location	-6.38899 53.3323
River Basin District	IEEA
NACE Code	3832
Main Economic Activity	Recovery of sorted materials
<b>AER Returns Contact Name</b>	Dr Gabriel Kelly
<b>AER Returns Contact Email Address</b>	gabriel.kelly@greyhoundrecycling.com
<b>AER Returns Contact Position</b>	EHS Manager
<b>AER Returns Contact Telephone Number</b>	01 457 7777
<b>AER Returns Contact Mobile Phone Number</b>	0876165574
<b>AER Returns Contact Fax Number</b>	01 4196882
<b>Production Volume</b>	0,0
<b>Production Volume Units</b>	
<b>Number of Installations</b>	0
<b>Number of Operating Hours in Year</b>	0
<b>Number of Employees</b>	0
<b>User Feedback/Comments</b>	
<b>Web Address</b>	

## 2. PRTR CLASS ACTIVITIES

Activity Number	Activity Name
50.1	General
5(c)	Installations for the disposal of non-hazardous waste
50.1	General

## 3. SOLVENTS REGULATIONS (S.I. No. 543 of 2002)

Is it applicable?	
Have you been granted an exemption ?	
If applicable which activity class applies (as per Schedule 2 of the regulations) ?	
Is the reduction scheme compliance route being used ?	



4.2 RELEASES TO WATERS

[Link to previous years emissions data](#)

| PRTR#: W0205 | Facility Name : Greyhound Recycling & Recovery | Filename : PRTR of W0205\_2011 rev1.xls | Return Year : 2011 |

2012-05-04 12:22

**SECTION A : SECTOR SPECIFIC PRTR POLLUTANTS**

Data on ambient monitoring of storm/surface water or groundwater, conducted as part of your licence requirements, should NOT be submitted under AER / PRTR Reporting as this or

RELEASERS TO WATERS			Please enter all quantities in this section in KGs					
POLLUTANT		Method Used		QUANTITY				
No. Annex II	Name	M/C/E	Method Code	Designation or Description	Emission Point 1	T (Total) KG/Year	A (Accidental) KG/Year	F (Fugitive) KG/Year
					0,0	0,0	0,0	0,0

\* Select a row by double-clicking on the Pollutant Name (Column B) then click the delete button

**SECTION B : REMAINING PRTR POLLUTANTS**

RELEASERS TO WATERS			Please enter all quantities in this section in KGs					
POLLUTANT		Method Used		QUANTITY				
No. Annex II	Name	M/C/E	Method Code	Designation or Description	Emission Point 1	T (Total) KG/Year	A (Accidental) KG/Year	F (Fugitive) KG/Year
					0,0	0,0	0,0	0,0

\* Select a row by double-clicking on the Pollutant Name (Column B) then click the delete button

**SECTION C : REMAINING POLLUTANT EMISSIONS (as required in your Licence)**

RELEASERS TO WATERS			Please enter all quantities in this section in KGs					
POLLUTANT		Method Used		QUANTITY				
Pollutant No.	Name	M/C/E	Method Code	Designation or Description	Emission Point 1	T (Total) KG/Year	A (Accidental) KG/Year	F (Fugitive) KG/Year
306	COD	E	ESTIMATE	total water discharged to surface water in 2011 = 17873cu.m.(estimated)	1444,0	1444,0	0,0	0,0
240	Suspended Solids	E	ESTIMATE		480,0	480,0	0,0	0,0
314	Fats, Oils and Greases	E	ESTIMATE		18,0	18,0	0,0	0,0

4.3 RELEASES TO WASTEWATER OR SEWER

[Link to previous years emissions data](#)

| PRTR# : W0205 | Facility Name : Greyhound Recycling & Recovery | Filename : PRTR of W0205\_2

2012-05-04 12:22

SECTION A : PRTR POLLUTANTS

OFFSITE TRANSFER OF POLLUTANTS DESTINED FOR WASTE-WATER TREATMENT OR SEWER					Please enter all quantities in this section in KGs				
POLLUTANT		METHOD			QUANTITY				
No. Annex II	Name	M/C/E	Method Code	Designation or Description	Emission Point 1	T (Total) KG/Year	A (Accidental) KG/Year	F (Fugitive) KG/Year	
						0,0	0,0	0,0	0,0

\* Select a row by double-clicking on the Pollutant Name (Column B) then click the delete button

SECTION B : REMAINING POLLUTANT EMISSIONS (as required in your Licence)

OFFSITE TRANSFER OF POLLUTANTS DESTINED FOR WASTE-WATER TREATMENT OR SEWER					Please enter all quantities in this section in KGs				
POLLUTANT		METHOD			QUANTITY				
Pollutant No.	Name	M/C/E	Method Code	Designation or Description	Emission Point 1	T (Total) KG/Year	A (Accidental) KG/Year	F (Fugitive) KG/Year	
				total water discharged into sewer in 2011 = 16276 cu.m.		0,0	0,0	0,0	0,0
303	BOD	E	ESTIMATE			7201,0	7201,0	0,0	0,0
306	COD	E	ESTIMATE			12847,0	12847,0	0,0	0,0
240	Suspended Solids	E	ESTIMATE			2936,0	2936,0	0,0	0,0
314	Fats, Oils and Greases	E	ESTIMATE			218,0	218,0	0,0	0,0
343	Sulphate	E	ESTIMATE			1507,0	1507,0	0,0	0,0
324	Mineral oils	E	ESTIMATE			12,0	12,0	0,0	0,0
387	Ortho-phosphate (as P)	E	ESTIMATE			103,0	103,0	0,0	0,0
308	Detergents (as MBAS)	E	ESTIMATE			41,0	41,0	0,0	0,0

5. ONSITE TREATMENT & OFFSITE TRANSFERS OF WASTE

| PRTR#: W0205 | Facility Name : Greyhound Recycling & Recovery | Filename : PRTR of W0205\_2011 rev1.xls | Return Year : 2011 |

2012-05-04 12:22

Please enter all quantities on this sheet in Tonnes

0

Transfer Destination	European Waste Code	Hazardous	Quantity (Tonnes per Year)	Description of Waste	Waste Treatment Operation	Method Used		Location of Treatment	Haz Waste : Name and Licence/Permit No of Next Destination Facility	Haz Waste : Name and Licence/Permit No of Recover/Disposer	Haz Waste : Address of Next Destination Facility	Non Haz Waste: Address of Recover/Disposer	Name and License / Permit No. and Address of Final Recoverer / Disposer (HAZARDOUS WASTE ONLY)	Actual Address of Final Destination i.e. Final Recovery / Disposal Site (HAZARDOUS WASTE ONLY)
						M/C/E	Method Used		Non	Non Haz Waste: Address of Recover/Disposer				
Within the Country	19 12 10	No	16665,0	combustible waste (refuse derived fuel)	R1	M	Weighed	Offsite in Ireland	Lagan Cement ,P0487-05 CMP-Cimentos Maceira e Pataias S.A.Fábrica de Maceira-Liz ,,,		Killaskillen Kinnegad Mullingar Co. Westmeath ,Kinnegad ,Mullingar Co. Westmeath ,,,IRELAND			
To Other Countries	19 12 10	No	8842,0	combustible waste (refuse derived fuel)	R1	M	Weighed	Abroad			2405-019 ,,,Maceira-Liz Leiria ,,,Portugal			
To Other Countries	19 12 10	No	5894,0	combustible waste (refuse derived fuel)	R1	M	Weighed	Abroad	Secil Companhia Geral de Cal e Ciment SA ,,,		2901-864 ,,,Setubal ,,,Portugal			
Within the Country	19 12 10	No	47280,0	combustible waste (refuse derived fuel)	R13	C	Volume Calculation	Offsite in Ireland	Stack R Warehouse ,WFP-DC-10-0019-01		Alexandra Road Dublin1 ,,,Ireland			
Within the Country	19 12 10	No	17018,0	combustible waste (refuse derived fuel)	R1	M	Weighed	Offsite in Ireland	Irish Cement Limited ,P0030-04		Platin Works Platin ,County Meath ,Louth. ,,,Ireland			
Within the Country	19 12 12	No	407,0	11 other wastes (including mixtures of materials) from mechanical treatment of wastes other than those mentioned in 19 12	D1	M	Weighed	Offsite in Ireland	Rampere Landfill , W0066-02		Co. Wicklow ,,,Ireland			
Within the Country	19 12 12	No	11629,0	11 other wastes (including mixtures of materials) from mechanical treatment of wastes other than those mentioned in 19 12	D1	M	Weighed	Offsite in Ireland	Greenstar Holdings Ltd. ,W0165-02		Ballynagran Residual Landfill ,,, Co. Wicklow ,,,Ireland			
Within the Country	19 12 12	No	377,0	11 other wastes (including mixtures of materials) from mechanical treatment of wastes other than those mentioned in 19 12	D1	M	Weighed	Offsite in Ireland	Greenstar Holdings Ltd ,W0146-02		Knockharley Kentstown ,,,Navan Co. Meath, ,,,Ireland			
Within the Country	19 12 12	No	934,0	11 other wastes (including mixtures of materials) from mechanical treatment of wastes other than those mentioned in 19 12	R3	M	Weighed	Offsite in Ireland	Cleary Compost & Shredding Ltd. ,COR-KE-08-0010-01		Larch Hill House ,,,Monasterevin Co. Kildare ,,,Ireland			
Within the Country	19 12 12	No	2382,0	11 other wastes (including mixtures of materials) from mechanical treatment of wastes other than those mentioned in 19 12	D1	M	Weighed	Offsite in Ireland	Indaver Ireland ,W0167-02		Carranstown ,,, Duleek Co.Meath ,,,Ireland			
Within the Country	19 12 12	No	3181,0	11	R3	M	Weighed	Offsite in Ireland	Enrich Composting Facility ,WFP/MH/08/0001/01		,,,Kilcock Co. Meath ,,,Ireland			
Within the Country	20 01 40	No	506,0	metals	R4	M	Weighed	Offsite in Ireland	John Cullen t/a Multi Metal Recycling Ltd. ,WFP-WW-09-0014-01		Bollorney The Murrrough, ,,,Ireland			
Within the Country	19 12 02	No	643,0	ferrous metal	R4	M	Weighed	Offsite in Ireland	John Cullen t/a Multi Metal Recycling Ltd. ,WFP-WW-09-0014-01		Bollorney The Murrrough, ,,,Ireland			
Within the Country	19 12 02	No	543,0	ferrous metal	R4	M	Weighed	Offsite in Ireland	Clonmel Waste Disposal ,WM WP 08 02		23 Mitchell St ,,,Clonmel Co. Tipperary ,,,Ireland			
Within the Country	15 01 03	No	1858,0	wooden packaging	R3	M	Weighed	Offsite in Ireland	Clonmel Waste Disposal ,WM WP 08 02		23 Mitchell St ,,,Clonmel Co. Tipperary ,,,Ireland			
Within the Country	15 01 03	No	14,0	wooden packaging	R3	M	Weighed	Offsite in Ireland	O Connor Recycling Ltd ,WMP/30/07		Office 2 ,,,Roxboro Co. Roscommon ,,,Ireland			
Within the Country	15 01 03	No	218,0	wooden packaging	R3	M	Weighed	Offsite in Ireland	Nurendale Limited T/A Panda Waste Services, W0140-02		Rathdrinagh Beauparc ,,,Navan Meath. ,,,Ireland			

Within the Country	13 05 03	Yes	3,0 interceptor sludges	D1	M	Weighed	Offsite in Ireland	ENVA Ireland Ltd ,W0184-01	Clonminam Industrial Estate ,Portlaoise Co Laois ,Ireland	ENVA Ireland Ltd ,W0184-01,Clonminam Industrial Estate Portlaoise Co Laois ,Portlaoise Co Laois ,Ireland	Clonminam Industrial Estate Portlaoise Co Laois ,Portlaoise Co Laois ,Ireland
Within the Country	13 05 03	Yes	79,0 interceptor sludges	D1	M	Weighed	Offsite in Ireland	RILTA Environmental ,W0192-01.	Unit 402 Grant's Drive Greenogue Business Park ,Rathcoole Co. Dublin ,Ireland	RILTA Environmental ,W0192-01,Unit 402 Grant's Drive Greenogue Business Park ,Rathcoole Co. Dublin ,Ireland	Unit 402 Grant's Drive Greenogue Business Park ,Rathcoole Co. Dublin ,Ireland
To Other Countries	15 01 01	No	114,0 paper and cardboard packaging	R3	M	Weighed	Abroad	Paperman Products ,	Rathdown Cl Lissue Ind Est ,Lisburn ,BT28 2RB,United Kingdom		
To Other Countries	20 01 39	No	30,0 plastics	R3	M	Weighed	Abroad	Plaswire Limited. ,	Address. 29 Herrons Road..., Castlewellan. Co Down. ,BT31 9SR.,United Kingdom		
To Other Countries	20 01 39	No	13,0 plastics	R3	M	Weighed	Abroad	WRC Recycling ,SWE/019265	Anchans Farm Johnstone Renfrewshire ,Renfrewshire ,PA67 EE ,United Kingdom		
Within the Country	15 01 06	No	4444,0 mixed packaging	R3	M	Weighed	Offsite in Ireland	Killarney Waste Disposal ,W0217-01	Aughacureen , Killarney Co. Kerry ,Ireland		
Within the Country	15 01 06	No	1662,0 mixed packaging	R3	M	Weighed	Offsite in Ireland	Clean (Irl) Refuse and RecyclingCo. Ltd. , 002/07/WPT/CL	Smithstown Ind. Est. ,Shannon Co. Clare.,Ireland		
Within the Country	15 01 06	No	525,0 mixed packaging	R3	M	Weighed	Offsite in Ireland	WERS ,	Tuam Business Park ,Tuam Co Galway.,Ireland		
Within the Country	15 01 06	No	10,0 mixed packaging other wastes (including mixtures of materials) from mechanical treatment of wastes other than those mentioned in 19 12	R3	M	Weighed	Offsite in Ireland	Cgreen Recycling ,	Old Radiator Factory ,Murrough Co. Wicklow ,Ireland		
Within the Country	19 12 12	No	20,0 11 other wastes (including mixtures of materials) from mechanical treatment of wastes other than those mentioned in 19 12	R3	M	Weighed	Offsite in Ireland	Clean (Irl) Refuse and RecyclingCo. Ltd. , 002/07/WPT/CL	Smithstown Ind. Est. ,Shannon Co. Clare.,Ireland		
Within the Country	19 12 12	No	421,0 11 other wastes (including mixtures of materials) from mechanical treatment of wastes other than those mentioned in 19 12	R3	M	Weighed	Offsite in Ireland	Dillon Waste ,W0184-01	The Kerries ,Tralee Co. Kerry ,Ireland		
Within the Country	19 12 12	No	2862,0 11	R3	M	Weighed	Offsite in Ireland	Killarney Waste Disposal ,W0217-01	Aughacureen , Killarney Co. Kerry ,Ireland		
Within the Country	17 04 01	No	1295,0 copper, bronze, brass	R4	E	Weighed	Offsite in Ireland	Hammond Lane Metal Co. ,WFP-DC-09-0013-01	Pigeon Hse rd Ringsend ,Dublin 4 ,Ireland		
Within the Country	17 04 02	No	1983,0 aluminium	R4	E	Weighed	Offsite in Ireland	Hammond Lane Metal Co. ,WFP-DC-09-0013-01	Pigeon Hse rd Ringsend ,Dublin 4 ,Ireland		
Within the Country	17 04 05	No	3783,0 iron and steel	R4	E	Weighed	Offsite in Ireland	Hammond Lane Metal Co. ,WFP-DC-09-0013-01	Pigeon Hse rd Ringsend ,Dublin 4 ,Ireland		
Within the Country	17 04 07	No	2085,0 mixed metals	R4	E	Weighed	Offsite in Ireland	Hammond Lane Metal Co. ,WFP-DC-09-0013-01	Pigeon Hse rd Ringsend ,Dublin 4 ,Ireland		
Within the Country	16 06 01	Yes	193,0 lead batteries	R13	E	Weighed	Offsite in Ireland	Hammond Lane Metal Co. ,WFP-DC-09-0013-01	Pigeon Hse rd Ringsend ,Dublin 4 ,Ireland	Hammond Lane Metal Co. ,WFP-DC-09-0013-01,Pigeon Hse rd Ringsend ,Dublin 4 ,Dublin 4 ,Ireland	Pigeon Hse rd Ringsend ,Dublin 4 ,Dublin 4 ,Ireland
Within the Country	20 01 23	Yes	discarded equipment containing 0,6 chlorofluorocarbons	R13	E	Weighed	Offsite in Ireland	Rehab Recycle ,WFP-DS.-10-0008-01	77 Broomhill Road Thallaght ,Dublin 22. ,Ireland	Rehab Recycle ,WFP-DS.-10-0008-01,77 Broomhill Road ,Thallaght ,Dublin 22. ,Dublin 22. ,Ireland	77 Broomhill Road ,Thallaght ,Dublin 22. ,Dublin 22. ,Ireland
Within the Country	16 02 13	Yes	discarded equipment containing hazardous components (16) other than those mentioned in 16 02 09 to 16 02 12	R5	E	Weighed	Offsite in Ireland	Rehab Recycle ,WFP-DS.-10-0008-01	77 Broomhill Road Thallaght ,Dublin 22. ,Ireland	Rehab Recycle ,WFP-DS.-10-0008-01,77 Broomhill Road ,Thallaght ,Dublin 22. ,Dublin 22. ,Ireland	77 Broomhill Road ,Thallaght ,Dublin 22. ,Dublin 22. ,Ireland
Within the Country	16 02 14	No	discarded equipment other than those 2,5 mentioned in 16 02 09 to 16 02 13	R5	E	Weighed	Offsite in Ireland	Rehab Recycle ,WFP-DS.-10-0008-01	77 Broomhill Road Thallaght ,Dublin 22. ,Ireland		

Within the Country	19 12 12	No	653,0	11 other wastes (including mixtures of materials) from mechanical treatment of wastes other than those mentioned in 19 12	D1	C	Weighed	Offsite in Ireland	KTK Landfill ,W0081-03	Brownstown ,, Kilcullen Co.Kildare ,,Ireland
Within the Country	20 03 01	No	1467,0	11 mixed municipal waste other wastes (including mixtures of materials) from mechanical treatment of wastes other than those mentioned in 19 12	D1	C	Weighed	Offsite in Ireland	KTK Landfill ,W0081-03	Brownstown ,, Kilcullen Co.Kildare ,,Ireland
Within the Country	19 12 12	No	9218,0	11 other wastes (including mixtures of materials) from mechanical treatment of wastes other than those mentioned in 19 12	D1	C	Weighed	Offsite in Ireland	BORD na Mona Drehid Landfill ,W0201-02	,,,Kildare ,,Ireland
Within the Country	20 03 01	No	20711,0	11 mixed municipal waste other wastes (including mixtures of materials) from mechanical treatment of wastes other than those mentioned in 19 12	D1	C	Weighed	Offsite in Ireland	BORD na Mona Drehid Landfill ,W0201-02	,,,Kildare ,,Ireland
Within the Country	19 12 12	No	464,0	11 other wastes (including mixtures of materials) from mechanical treatment of wastes other than those mentioned in 19 12	D1	C	Weighed	Offsite in Ireland	Greenstar Holdings Ltd. ,W0165-02	Ballynagran Residual Landfill ,, Co. Wicklow ,,Ireland
Within the Country	20 03 01	No	1043,0	11 mixed municipal waste other wastes (including mixtures of materials) from mechanical treatment of wastes other than those mentioned in 19 12	D1	C	Weighed	Offsite in Ireland	Greenstar Holdings Ltd. ,W0165-02	Ballynagran Residual Landfill ,, Co. Wicklow ,,Ireland
Within the Country	19 12 12	No	774,0	11 other wastes (including mixtures of materials) from mechanical treatment of wastes other than those mentioned in 19 12	D1	C	Weighed	Offsite in Ireland	Rampere Landfill ,W0066-02	,,,Co. Wicklow ,,Ireland
Within the Country	20 03 01	No	1739,0	11 mixed municipal waste other wastes (including mixtures of materials) from mechanical treatment of wastes other than those mentioned in 19 12	D1	C	Weighed	Offsite in Ireland	Rampere Landfill ,W0066-02	,,,Co. Wicklow ,,Ireland
Within the Country	19 12 12	No	1206,0	11 other wastes (including mixtures of materials) from mechanical treatment of wastes other than those mentioned in 19 12	D1	C	Weighed	Offsite in Ireland	Indaver Ireland ,W0167-02	Carranstown ,, Duleek Co.Meath ,,Ireland
Within the Country	20 03 01	No	2710,0	11 mixed municipal waste other wastes (including mixtures of materials) from mechanical treatment of wastes other than those mentioned in 19 12	D1	C	Weighed	Offsite in Ireland	Indaver Ireland ,W0167-02	Carranstown ,, Duleek Co.Meath ,,Ireland
Within the Country	20 03 01	No	2372,0	11 mixed municipal waste other wastes (including mixtures of materials) from mechanical treatment of wastes other than those mentioned in 19 12	D1	M	Weighed	Offsite in Ireland	Laois County Council Kyletalesha Landfill ,W0028-02	,,,Kyletalesha Landfill Laois. ,,Ireland

\* Select a row by double-clicking the Description of Waste then click the delete button

[Link to previous years waste data](#)

[Link to previous years waste summary data & percentage change](#)