

# Wallace Recycling Ltd.

UNIT 16/17 MULLINGAR BUSINESS PARK, MULLINGAR, CO. WESTMEATH

WASTE LICENCE REGISTER NO: W0197-02

## Annual Environmental Report 2011



ENVIROGUIDE CONSULTING,  
93 UPPER GEORGES STREET,  
DUN LAOGHAIRE,  
CO. DUBLIN

## TABLE OF CONTENTS

<b>A.</b>	<b>INTRODUCTION:</b> .....	3
<b>B.</b>	<b>TECHNICAL AMENDMENT &amp; OTHER CHANGES:</b> .....	4
<b>C.</b>	<b>ENVIRONMENTAL POLICY STATEMENT</b> .....	5
<b>1.</b>	<b>SUMMARY INFORMATION</b> .....	7
<b>1.1</b>	<b>EMISSIONS FROM FACILITY</b> .....	7
1.1	Dust Monitoring .....	7
1.2	Emissions to Sewer Monitoring .....	8
1.3	Noise Monitoring .....	10
<b>2.</b>	<b>WASTE MANAGEMENT ACTIVITIES</b> .....	11
2.1	Waste Types .....	11
<b>3.</b>	<b>RESOURCE CONSUMPTION SUMMARY</b> .....	13
3.1	Energy consumption.....	13
3.2	Water Consumption from Municipal Supply.....	13
<b>4.</b>	<b>ENVIRONMENTAL COMPLAINTS &amp; ENVIRONMENTAL INCIDENTS</b>	
	<b>SUMMARY</b> .....	14
4.1	Environmental Complaints:.....	14
4.2	Environmental Incidents: .....	14
<b>5.</b>	<b>SCHEDULE OF OBJECTIVES &amp; TARGETS AND EMP for 2011</b> .....	15
5.1	EMP- Proposed for 2012.....	16
<b>7.</b>	<b>POLLUTION EMISSION REGISTER.</b> .....	17
<b>8.</b>	<b>DRAWING OF MONITORING LOCATIONS (IF AMENDED)</b> .....	17
<b>9.</b>	<b>TANK &amp; PIPELINE TESTING &amp; INSPECTION REPORT</b> .....	17
<b>10.</b>	<b>ENERGY EFFICIENCY AUDIT REPORT SUMMARY</b> .....	17
<b>11.</b>	<b>REPORT OF THE ASSESSMENT OF THE EFFICIENCY OF USE OF</b>	
	<b>RAW MATERIALS IN PROCESSES &amp; THE REDUCTION OF WASTE</b>	
	<b>GENERATED</b> .....	17
<b>12.</b>	<b>REPORT ON PROGRESS MADE &amp; PROPOSALS BEING DEVELOPED</b>	
	<b>TO MINIMISE WATER DEMAND &amp; THE VOLUME OF TRADE</b>	
	<b>EFFLUENT DISCHARGE</b> .....	18
<b>13.</b>	<b>DEVELOPMENT/ INFRASTRUCTURE WORKS SUMMARY</b> .....	18
13.1	Development/Infrastructure works completed in 2011 .....	18
13.2	Development/Infrastructure works planned for 2012.....	18
<b>14.</b>	<b>REPORTS ON MANAGEMENT &amp; STAFFING STRUCTURE OF THE</b>	
	<b>FACILITY, AND A PROGRAMME FOR PUBLIC INFORMATION</b> .....	19

<b>15. REVIEW OF CLOSURE, RESTORATION &amp; AFTERCARE MANAGEMENT PLAN .....</b>	<b>19</b>
<b>16. ENVIRONMENTAL LIABILITIES STATEMENT .....</b>	<b>20</b>
<b>17. ANY OTHER ITEMS SPECIFIED BY THE EPA .....</b>	<b>21</b>

**APPENDIX 1 Monitoring Locations**

**APPENDIX 2 PRTR**

## **A. INTRODUCTION:**

This is the sixth annual environmental report for Wallace Recycling Ltd, Unit 16/17 Mullingar Business Park, Mullingar, Co. Westmeath in relation to the Waste Licence WO197-01 issued on 14<sup>th</sup> September 2005 and as per the new licence WO197-02 issued on 12<sup>th</sup> October 2009. This report covers the twelve months of the calendar year for 2011.

The Wallace Recycling Facility is located in an Industrial area of Mullingar Business Park, Co. Westmeath. Michael & Linda Wallace have successfully operated Wallace Recycling Ltd at the current site since 2000. The licensed area now encompasses approximately 2.00 acres.

Wallace Recycling Ltd is the only EPA waste licensed facility in County Westmeath; as such it is a key facility in terms of compliance with the requirements of the Waste Management Plan for the Midlands region. Wallace Recycling provide waste management and recycling services to most of County Westmeath. Wallace Recycling have continually improved their waste and recycling facility through the introduction of new plant, IT facilities, buildings and the provision of a civic amenity area to facilitate the public when the nearby Marlinstown facility closed at the start of 2007.

The content of the AER is based on Schedule F of the Waste Licence and the report format follows guidelines set in the "Guidance Note for Annual Environmental Report" issued by the Environmental Protection Agency.

The original Waste Licence allowed Wallace Recycling Ltd to accept Household, Commercial & Industrial and Construction & Demolition non-hazardous waste on-site between the hours of 08:30 to 17:30 Monday to Saturday inclusive. The various waste streams are processed and stored on-site pending removal to authorised off-site recycling and disposal facilities.

The annual waste throughput is limited to 50,000 tonnes. Waste is mechanically sorted and segregated via a Trommel and semi automatic picking line; larger items are picked by hand. Sorted recyclable material is further processed at the facility i.e. shredded or baled prior to being transported off-site for recovery. Non-recyclable waste is stored on site prior to being transported off-site for disposal at licensed facilities.

Wallace Recycling Ltd services in 2011 included:

- Mini, Standard, Open/Closed Skip Hire;
- Roll-on, Roll-off Skip Hire;
- Domestic Tag-A-Bin refuse/recycling kerbside collection;
- Recycling (Bags) Kerbside collection;
- Commercial & Industrial Bin collections;
- Office Recycling collections;
- A centrally located one-stop-shop waste transfer station.

**B. TECHNICAL AMENDMENT & OTHER CHANGES:**

A Technical Amendment was approved in 2007, along with some other changes which allow for the following amendments to the Waste Licence WO-197-02:

**1. Acceptance of ELVs**

In December 2007 the EPA sent documentation confirming that Wallace Recycling is an Authorised Treatment Facility (ATF) for End of Life Vehicles. Agreement was sought and received from the Agency in 2011 for the storage and treatment of ELV's.

**2. Extension of opening hours:**

The granted extension of hours is as follows:

“Waste shall be accepted at the facility only between the hours of 07:30 to 19:00 Monday to Saturday inclusive.

The facility shall be operated only during the hours of 07:00 to 23:00 Monday to Saturday inclusive.”

**3. Effluent Monitoring Frequency**



The frequency of monitoring of COD, BOD, Suspended Solids, Oils, Fats & Greases and DRO were seen by Wallace Recycling Ltd as particularly onerous. Having reviewed a selection of IPC licences available on the EPA website, the normal frequency for monitoring of water emissions would appear to be quarterly. Agreement was received from Westmeath County Council to reduced monitoring requirements. Correspondence has been exchanged between Wallace Recycling Ltd and the Agency on this issue.

**OTHER CHANGES:**

During 2011 there were a number of resource issues due mainly to staff turnover which included a key member of the management team. The current management structure can be found on page 5 of this AER.

C. ENVIRONMENTAL POLICY STATEMENT

**WALLACE**  
**RECYCLING LTD**



Unit 16/17, Mullingar Business Park,  
Mullingar, Co. Westmeath  
Tel: 044-47177 Fax: 044-34795  
Email: wallacerecycling@eircom.net  
Website: www.wallacerecycling.com

Commercial & Domestic Wheelie Bin Service,  
Skip Hire, Waste Management  
& Recycling Specialists

**ENVIRONMENTAL POLICY STATEMENT**

Wallace Recycling Ltd is a recycling and waste management company. Established in 1995, the company is a market leader in providing waste collection and recycling services to domestic, industrial and commercial clients. Wallace Recycling Ltd operate a waste transfer and recycling facility at Mullingar Business Park, Mullingar, Co Westmeath. This site provides facilities for handling and recycling wastes from a wide range of sources.

Wallace Recycling Ltd operations have a positive environmental impact and help Irish households and industry to effectively manage and recycle their wastes. However, we are aware of the need to reduce the environmental impact of waste disposal and the over-reliance of landfill as a waste disposal option.

Consequently, Wallace Recycling Ltd regard recycling, waste minimisation and environmental protection as an ongoing and essential part of our business. We will therefore take all reasonable steps to assist our clients to reduce the quantities of waste disposal to landfill and ensure that our own operations do not have a negative impact on the environment.

Wallace Recycling Ltd will strive to meet these commitments by:

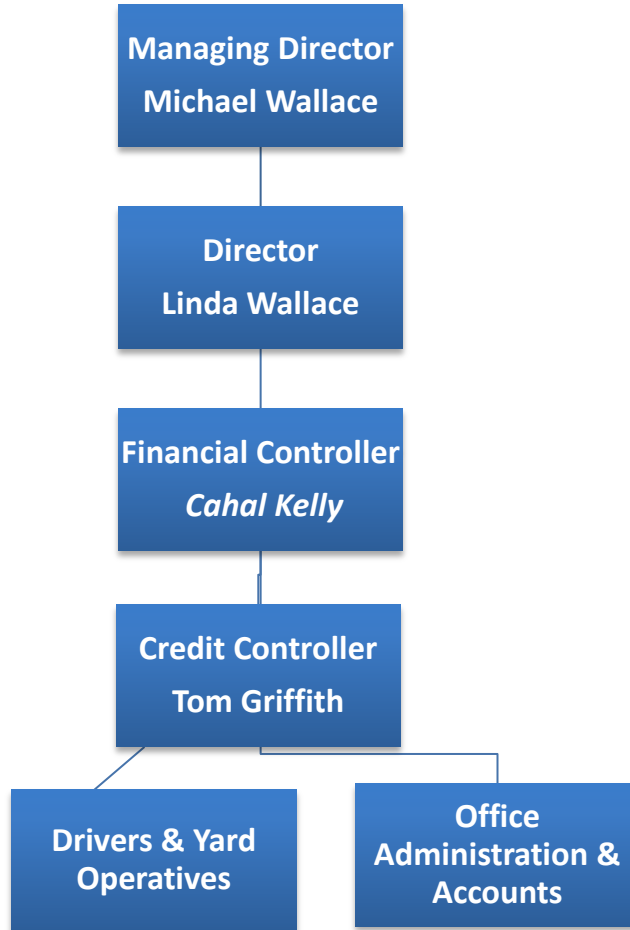
- conforming to relevant environmental standards, licences and legislation relating to our business,
- continually improving our operations by setting and reviewing environmental objectives and targets,
- preventing pollution from our transfer and recycling facility by monitoring and assessing our activities and emissions,
- reviewing options to recycle waste and divert from landfill disposal,
- assisting our clients to segregate and make their wastes available for recycling,
- communicating our environmental policy to all employees and ensuring that they have the knowledge, resources and authority to implement this policy,
- ensuring that the proper managerial, technical and administrative controls shall operate in order to enable this policy to be maintained at all levels,
- making our environmental policy available to the public and interested parties.

Whilst all Wallace Recycling Ltd employees have a duty to ensure that our operations do not cause environmental pollution, the overall responsibility for environmental protection lies with the Managing Director.

Signed: *Michael Wallace*  
Michael Wallace  
Managing Director  
Wallace Recycling Ltd      Date:      January 2005

Directors: M. Wallace & L. Wallace      Printed on Recycled Stock

**D. WALLACE RECYCLING ORGANISATIONAL CHART**



## 1. SUMMARY INFORMATION

### 1.1 EMISSIONS FROM FACILITY

Wallace Recycling Ltd implements an environmental monitoring programme to assess the significance of emissions from our facility activities. The programme includes dust monitoring, emissions to sewer and noise monitoring. The monitoring locations are shown on Drawing No. Map J.1 Site Monitoring Locations in Appendix 1. During the year permission was sought from and obtained to change the labelling on the surface water and foul water monitoring points from EF1, EF2, and EF3 to FW1, SW1 and FW2 respectively.

An overview of the results of the monitoring is presented in this section, with summary data in tables also included. The results are discussed in the context of the impact of the emissions on the environment and compared with available data on background and/or ambient conditions.

#### 1.1 Dust Monitoring

Wallace Recycling Ltd is required to conduct quarterly dust monitoring using the Bergerhoff method at four on-site locations (D1, D2, D3, and D4). The licence requirement to monitor dust on a quarterly basis was not met as monitoring fell behind schedule. A programme has been put in place to ensure dust levels are monitored each quarter as required in 2012; Oldcastle Laboratory, Oldcastle, Co. Meath will be performing the analysis on these samples.

The monitoring conducted for dust in 2011 showed that the dust deposition limit (350 mg/m<sup>3</sup>/day) was not exceeded at any of the monitoring locations. The results of the dust monitoring performed are included in Table 1.1 below.

Table 1.1 Results of Dust Monitoring 2011:

Date	Sample Reference	Actual
16/08/2011	D1	349.1 mg/m <sup>2</sup> /day
	D2	116.7 mg/m <sup>2</sup> /day
	D3	164.9 mg/m <sup>2</sup> /day
	D4	221.5 mg/m <sup>2</sup> /day

30 day composite sample with the results expressed as mg/m<sup>3</sup> /day.



## 1.2 Emissions to Sewer Monitoring

These samples are taken from the locations EF1, EF2 and EF3.

*Schedule C C.3.2 Monitoring of Emissions to Sewer* states that the following parameters must be monitored:

**Volume to be emitted:** Maximum in any 1 day: 10m<sup>3</sup>; Maximum rate per hour: 5m<sup>3</sup>

Parameter	Monitoring Frequency	Analysis Method/ Technique
Flow	Annual	On-line flow meter with recorder
Temperature	Annual	On-line temperature probe with recorder
pH	Annual	pH electrode/meter and recorder
Chemical Oxygen Demand	Annual	Standard method
Biochemical Oxygen Demand	Annual	Standard method
Suspended Solids	Annual	Gravimetric
Oils, Fats & Greases	Annual	Standard method
Diesel Range Organics	Annual	Standard method

The frequency of monitoring of COD, BOD, Suspended Solids, Oils, Fats & Greases and DRO are seen by Wallace Recycling Ltd as particularly onerous. Having reviewed a number of IPC licences available on the EPA website, the normal frequency for monitoring of water emissions would appear to be quarterly.

This has been highlighted and discussed with the EPA Inspectors on a number of occasions and was also raised as a non-conformance during an EPA audit (W0197-01)06AR01LOS carried out on 13<sup>th</sup> November 2006. A schedule for testing of the sewer emissions on a weekly basis was agreed during this audit.

On the 26<sup>th</sup> February 2007 correspondence was sent to the EPA Inspector requesting a review of the frequency of sewer emission monitoring. A meeting was held with two members of the EPA enforcement section on 22<sup>nd</sup> March 2007 to progress this issue. A change to the effluent sampling frequency has been granted, allowing for sampling to take place once per annum for all parameters.

Emissions to Sewer monitoring were not performed in the first quarter of 2011 however pending agreement from the Agency regarding a reduced programme of monitoring this was carried out in accordance with licence conditions for the remainder of the year.

Results are presented below:

April				
Date	Parameter	Actual	Emission Limit Value	
06/04/2011	PH	6.4	6 to 8	
			mg/l	kg/day
	BOD	37.5	100	2
	COD	200	250	2.5
	Suspended Solids	25	50	1
	Oils Fats Grease	1.5	10	-
	Diesel Range	<0.01	2	-

<i>May</i> Date	Organics			
	<u>Parameter</u>	<u>Actual</u>	<u>Emission Limit Value</u>	
11/05/2011	PH	6.7	6 to 8	
			mg/l	kg/day
	BOD	30	100	2
	COD	172	250	2.5
	Suspended Solids	52.5	50	1
	Oils Fats Grease	1	10	-
	Diesel Range	<0.01	2	-
	Organics			
<i>June</i> Date	Organics			
	<u>Parameter</u>	<u>Actual</u>	<u>Emission Limit Value</u>	
			mg/l	kg/day
08/06/2011	PH	6.7	6 to 8	
	BOD	62.5	100	2
	COD	280	250	2.5
	Suspended Solids	28	50	1
	Oils Fats Grease	3.5	10	-
	Diesel Range	<0.01	2	-
	Organics			
	<i>July</i> Date	Organics		
	<u>Parameter</u>	<u>Actual</u>	<u>Emission Limit Value</u>	
			mg/l	kg/day
21/06/2011	PH	6.5	6 to 8	
	BOD	25	100	2
	COD	123	250	2.5
	Suspended Solids	89.2	50	1
	Oils Fats Grease	2.4	10	-
	Diesel Range	0.06	2	-
	Organics			
	<i>September</i> Date	Organics		
	<u>Parameter</u>	<u>Actual</u>	<u>Emission Limit Value</u>	
			mg/l	kg/day
13/09/2011	PH	6.9	6 to 8	
	BOD	6.25	100	2
	COD	62	250	2.5
	Suspended Solids	72.4	50	1
	Oils Fats Grease	3.6	10	-
	Diesel Range	<0.01	2	-
	Organics			
	<i>October</i>	Organics		

<u>Date</u>	<u>Parameter</u>	<u>Actual</u>	<u>Emission Limit Value</u>	
11/10/2011	PH	7.2	6 to 8	
			mg/l	kg/day
	BOD	17.5	100	2
	COD	70	250	2.5
	Suspended Solids	20.8	50	1
	Oils Fats Grease	1.2	10	-
	Diesel Range Organics	<0.01	2	-
<i>November</i>				
<u>Date</u>	<u>Parameter</u>	<u>Actual</u>	<u>Emission Limit Value</u>	
23/11/2011	PH	7.3	6 to 8	
			mg/l	kg/day
	BOD	6.25	100	2
	COD	12	250	2.5
	Suspended Solids	23.6	50	1
	Oils Fats Grease	2.8	10	-
	Diesel Range Organics	<0.01	2	-
<i>December</i>				
<u>Date</u>	<u>Parameter</u>	<u>Actual</u>	<u>Emission Limit Value</u>	
03/01/2012	PH	6.5	6 to 8	
			mg/l	kg/day
	BOD	35	100	2
	COD	127	250	2.5
	Suspended Solids	27.6	50	1
	Oils Fats Grease	12	10	-
	Diesel Range Organics	<0.01	2	-

These results are for FW1. FW2 was dry throughout and therefore unable to be sampled.

### 1.3 Noise Monitoring

Noise monitoring survey was not performed in 2011. However Noise Monitoring will be carried out in early 2012 and the results reported to the Agency.

## **2. WASTE MANAGEMENT ACTIVITIES**

The EPA Waste Licence allows Wallace Recycling Ltd to accept and process on-site for recovery and disposal, 50,000 tonnes of waste per annum, comprising commercial/industrial non-hazardous waste, household waste and construction & demolition wastes. Waste processing takes place inside the waste transfer station building.

### **2.1 Waste Types**

The facility is licensed to accept the following waste types as specified in Part 1 Schedule of Activities Licensed the Waste Licence: -

- Household,
- Commercial & Industrial,
- Construction & Demolition
- End of life vehicles
- Scrap metal

Hazardous waste is not accepted at the facility, with the exception of small quantities of that which inadvertently arrive in waste deliveries, for example batteries. Any materials suspected either to be hazardous or not acceptable under licence conditions (e.g. gas cylinders, chemical drums etc) are temporarily stored on-site in the waste quarantine area, before removal off-site for treatment/disposal at an appropriate facility.

A copy of the list of current authorised facilities used for waste disposal and recycling is included in Appendix 2 - Recycling & Disposal Schedule.

#### **Household, Commercial & Industrial Waste Containing Putrescible Materials**

Household, commercial & industrial wastes (originating in factories, hotels, pubs and supermarkets) containing an organic fraction are either deposited on the floor of the transfer building, or tipped directly into open trailers. All the household waste deposited on the floor is either pushed into an open trailer, or compacted for removal off-site for disposal at an off-site landfill, as agreed with the Agency.

Industrial & commercial waste is inspected and segregated into recyclables and non-recyclables. All uncontaminated cardboard and plastic packaging material, which is suitable for baling, is collected for recycling or delivered to authorised recyclers. Tin cans are collected, baled and stored on-site pending removal off-site for recycling. Glass bottles, which are either segregated prior to arrival on site, or deposited at the civic amenity area, are stored on-site pending removal for recycling off-site.

#### **Non Putrescible Household and Commercial Waste**

Non putrescible household wastes, arising from the kerbside collection, and non-putrescible commercial/industrial waste is deposited onto the floor of the transfer building and inspected for disposable and/or recoverable fractions. Non recyclable/recoverable wastes are stored within the building before transfer for disposal to an off-site landfill, as agreed with the Agency.

### **Construction and Demolition Waste**

All construction and demolition waste is inspected to determine if it is suitable for transfer and/or recovery. Wood and metal are separated using a mechanical grab and subsequently removed off-site to approved recovery/recycling facilities. The residual material is passed through a trommel to remove the fine fraction containing subsoil and topsoil. This material is sent for inert landfilling. Currently the treatment of this type of waste is not being carried out on site and the trommel was mothballed in late 2011.

### **Wood, Timber and Green Waste**

Wood and timber delivered to and recovered on-site is collected and removed off-site for disposal. Green waste delivered to the facility is stored pending transfer to an offsite composting facility.

### **End of Life vehicles**

End of life vehicles are accepted onto the site for de-pollution. De-pollution is now being carried out on site in line with the licence conditions and the recovered parts sold onwards. The remaining 'shell' is sent for metal recycling. Initially ELV's were accepted on site and sent to an approved ATF for recovery.

### **Civic Amenity Facilities**

There are a number of containers located at the facility, which are provided for use by the general public for deposition of household waste and recyclables including plastic, timber, cans, glass, metals and textiles. The materials collected in these are removed off-site for recovery/recycling.

### **3. RESOURCE CONSUMPTION SUMMARY**

#### **3.1 *Energy consumption.***

Energy at the facility is provided by electricity supplied by the ESB; there are no boilers or burners of other fuel types used on site.

Electricity usage for January to December 2011 based on consumption and cost reports from the Energia was 42.97 Megawatts, this shows an increase from 39.5 Megawatts used in 2010.

An Energy Efficiency Survey was completed in 2008 by Power-Therm Solutions to monitor the energy management system within the company. A further Energy Efficiency Survey is proposed for 2012.

#### **3.1.2 *Fuel usage***

The light fuel (diesel) usage in 2011 at the facility was 167,190 litres. This is an increase of 13,538 litres on 2010. This is partly due to increased kerbside collections.

#### **3.2 *Water Consumption from Municipal Supply.***

The water supplied to the site is via mains from the municipal supply managed by Westmeath County Council. Water is not used extensively in the waste transfer process itself; the main consumption of water on-site is through domestic usage, i.e. toilets and canteen, with a certain volume used for the wheel wash.

Based on the latest water meter reading information supplied by Westmeath County Council, the water usage in 2011 was 131m<sup>3</sup>.

#### **4. ENVIRONMENTAL COMPLAINTS & ENVIRONMENTAL INCIDENTS SUMMARY**

##### **4.1 *Environmental Complaints:***

During 2011 there were no formal environmental complaints received from members of the public relating to the services provided by Wallace Recycling Ltd. A procedure is in place to deal with these issues should they arise, the objective being to establish the root cause of the complaint in order to prevent a recurrence.

##### **4.2 *Environmental Incidents:***

All environmental incidents are recorded on the Incident Report Form; there was one incident reported to the Agency, namely an exceedance of the Emission Limit Value for Suspended Solids at FW2 in September 2011. This was reported to the Agency and subsequent sampling was found to be compliant.

There is a system in place to ensure that all incidents which could have an environmental impact are reported in writing to the EPA.

**5. SCHEDULE OF OBJECTIVES & TARGETS AND EMP for 2011**

<b>EMP</b>	<b>Objective</b>	<b>Target</b>	<b>Responsibility</b>	<b>Timescale</b>
<b>1</b>	Continual improvement of EMS and Environmental compliance	Internal audits and updating procedures	M. Wallace	<b>Completed</b>
		Review of EMS	M. Wallace	<b>Not Completed</b>
<b>2</b>	Specified Engineering Work.	Outstanding work to be carried out	M. Wallace	<b>In progress at present 75% of rear yard now concreted</b>
<b>3</b>	Outstanding inspections	Carry out bund, tank & container integrity tests for diesel tanks.	M. Wallace	<b>Not completed due to resource issues.</b>
<b>4</b>	Training & Development	Train Yard Manager/Assistant Yard Manager/ in an EPA recognised Waste Facility Operator course as run by FAS.	General Manager	<b>Not completed due to resource issues. Basic training in licence conditions was provided to staff by Enviroguide.</b>



**5.1 EMP- Proposed for 2012**

	Objective	Target	Responsibility
1	Continual improvement of EMS & environmental compliance	Develop an internal audit schedule for all EMS processes & procedures.	M.Wallace
		Internal audits to be carried out throughout the year to ensure all processes/procedures are audited at least once per annum.	J Smith
		Corrective actions to be closed off in a timely manner & resources provided as required.	L. Wallace/ M. Wallace
2	Facility resource management	Carry out upgrades/repairs to yard	
		Carry out bund, tank & container integrity testing for diesel tanks.	M. Wallace
3	Training & Development	Train staff on EMS and EPA licence	M.Wallace

**7. POLLUTION EMISSION REGISTER.**

The PRTR is included in Appendix 2

**8. DRAWING OF MONITORING LOCATIONS (IF AMENDED)**

See Appendix 1 for map of monitoring locations.

**9. TANK & PIPELINE TESTING & INSPECTION REPORT**

Weekly in-house inspections are carried out of the interceptor, vehicle wash area and the drains at the main entrance and at Bays 1 & 2. The results and corrective actions required are recorded on the 'Weekly On Site Inspections' record. This system for inspection has been in place since 7<sup>th</sup> January 2005.

Tank & pipeline testing as required by Waste Licence Condition 3.11.5 and Schedule E have not been performed to date. These tests have been set to be completed in 2012.

**10. ENERGY EFFICIENCY AUDIT REPORT SUMMARY**

An energy audit was performed as required under Condition 7 of the Waste Licence. This was conducted by PowerTherm Solutions on 10<sup>th</sup> April 2008. Once this audit was completed a programme was developed to achieve energy and cost savings based on the recommendations made.

**11. REPORT OF THE ASSESSMENT OF THE EFFICIENCY OF USE OF RAW MATERIALS IN PROCESSES & THE REDUCTION OF WASTE GENERATED**

The reduction of wastes is a core part of the Wallace Recycling Ltd business ethos. Segregation systems are in place for the small quantities of waste generated as part of the Wallace Recycling Ltd office processes- segregation of office paper, cardboard and plastic plus the separation of domestic and canteen waste streams. The office recyclables are all

processed with the other recyclables in the yard and sent for recycling with licensed waste contractors.

**12. REPORT ON PROGRESS MADE & PROPOSALS BEING DEVELOPED TO MINIMISE WATER DEMAND & THE VOLUME OF TRADE EFFLUENT DISCHARGE**

In 2006 a water tank was installed under the yard to gather rain water which will be used for the wheel wash. It is planned to install submersible pumps to complete this system in 2012. This will reduce the volumes of water used by the facility. The tank may provide extra retention capacity in the event of a fire.

**13. DEVELOPMENT/ INFRASTRUCTURE WORKS SUMMARY**

**13.1 *Development/Infrastructure works completed in 2011***

- Installation of concrete hardstand in the rear yard
- Installation of drainage in the rear yard
- Installation of de-pollution shed

**13.2 *Development/Infrastructure works planned for 2012***

- Completion of concrete in rear yard
- Repairs to damaged sheets on waste transfer building

**14. REPORTS ON MANAGEMENT & STAFFING STRUCTURE OF THE FACILITY, AND A PROGRAMME FOR PUBLIC INFORMATION**

Refer to Section D, 5 for management and staffing structure.

An on-line form has been established on the Wallace Recycling Ltd website ([http://www.wallacerecycling.com/complaint\\_feedback\\_form.htm](http://www.wallacerecycling.com/complaint_feedback_form.htm)) to allow members of the public to make a complaint or give feedback about any aspect of the services provided.

A public information file is maintained at the facility.

**15. REVIEW OF CLOSURE, RESTORATION & AFTERCARE MANAGEMENT PLAN**

A Closure Plan has been prepared for the facility as a Restoration, Aftercare Management Plan. This is based on a 'clean closure' scenario. The cost associated with the unexpected closure of the facility is estimated at €65,800 as illustrated below. (This is based on 2011 rates.

Item	Removal Cost	Total
Removal of waste and recyclables (assume 150 tonnes)	€100 per tonne	€15,000
Waste Plant and picking line decommissioning and removal	€50,000	€50,000
Removal of bunded diesel tank	€500	€500
Removal and treatment of waste liquid (assume 2 tonnes)	€150 per tone	€300
Total		€65,800

The cost of the above will be partially offset by the sale of the plant and equipment.

## 16. ENVIRONMENTAL LIABILITIES STATEMENT

An ELRA was compiled in October 2010 which resulted in the Wallace Recycling Ltd. Being classified as Category 2. In accordance with section 3.2 of the Agency's guidance, a closure plan is required but a Restoration and Aftercare Management Plan is not required.

The potential for unknown liabilities to arise has been considered and financially provided for by way of ensuring that the following potential risks are covered by the financial provision instruments.

The following potential risks have been included:

- Spillages/Leaks from diesel tank
- Leaks from effluent drains
- Fire and failure/overspill from fire water storage
- Disposal of contaminated firewater
- Land contaminated from spillages

The potential consequences of the above are assessed in the table below and costing provided where possible:

Risk	Potential Environmental consequence	Probability	Estimated cost of remediation
Spillage/Leaks from diesel tank	Assuming complete failure of tank diesel would spill inside the materials recovery building. Minimal potential of water pollution	<b>LOW</b> – self banded diesel tank in place	€1,000
Leaks from effluent drains	Land contamination	<b>LOW</b> – drainage checks required by site licence	€100,000 est.
Overspill from firewater storage	Potential for firewater to enter surface water drainage system causing contamination	<b>LOW</b> – capacity of firewater retention considered to be sufficient to cope with maximum	See below
Removal of firewater	Maximum estimated firewater for removal = 313 m <sup>3</sup>	<b>LOW</b> – capacity of firewater retention considered to be sufficient to cope with maximum	Assuming disposal as hazardous waste 313 x 180 =€27,000
Land contamination from spillages	Potential for spillage during removal of waste oil from site	<b>LOW</b> – there is No external storage of liquids. Licensed waste contractors used for removal of wastes.	Est 20 tonnes @ €180 per tonne = €3,600

Having reviewed our process activities it has been concluded that potential future liabilities are considered to be low. Wallace Recycling Ltd has in place Emergency Procedures to manage and control such incidents and minimise the associated environmental impacts.

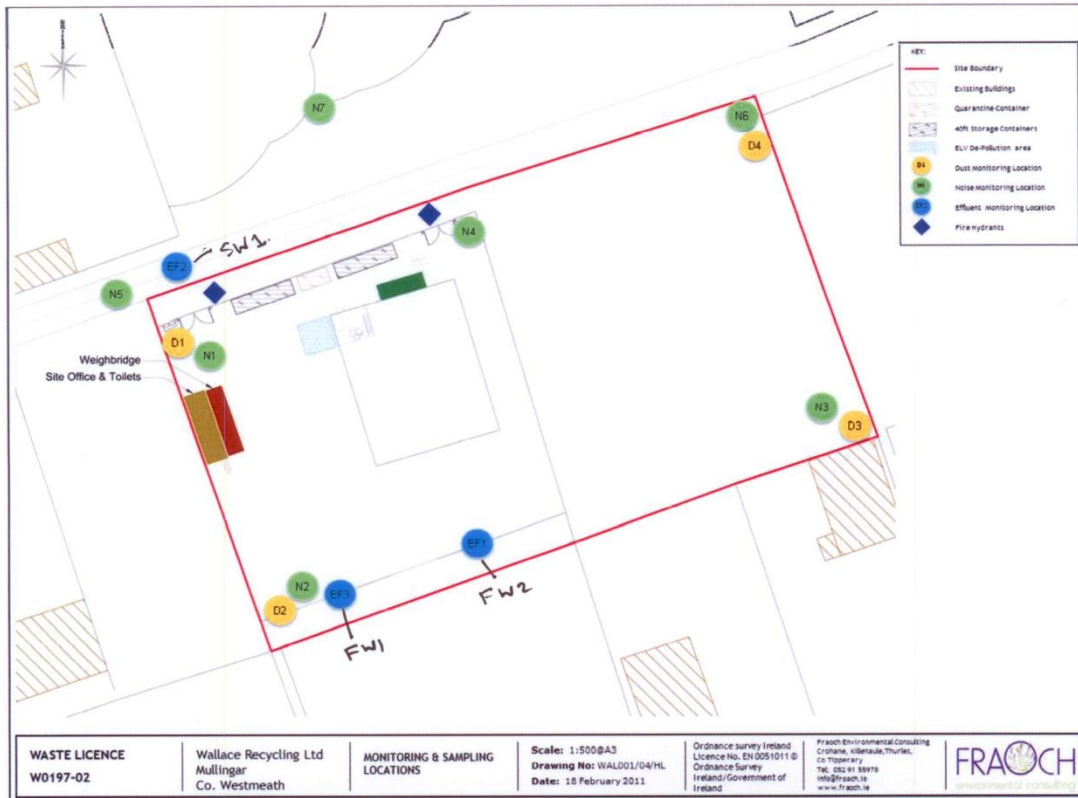
**17. ANY OTHER ITEMS SPECIFIED BY THE EPA**

None specified.

**APPENDIX 1 MONITORING LOCATIONS**



Annual Environmental Report 2011  
Wallace Recycling Ltd.





**APPENDIX 2 PRTR 2011**


[Guidance to completing the PRTR workbook](#)

## AER Returns Workbook

Version 1.1.13

<b>REFERENCE YEAR</b>	2011
-----------------------	------

### 1. FACILITY IDENTIFICATION

Parent Company Name	Wallace Recycling Limited
Facility Name	Wallace Recycling Ltd
PRTR Identification Number	W0197
Licence Number	W0197-02

Waste or IPPC Classes of Activity

N	class_name
4.13	Storage of waste intended for submission to any activity referred to in a preceding paragraph of this Schedule, other than temporary storage, pending collection, on the premises where such waste is produced.
3.11	Blending or mixture prior to submission to any activity referred to in a preceding paragraph of this Schedule.
3.13	Storage prior to submission to any activity referred to in a preceding paragraph of this Schedule, other than temporary storage, pending collection, on the premises where the waste concerned is produced.
4.2	Recycling or reclamation of organic substances which are not used as solvents (including composting and other biological transformation processes).
4.3	Recycling or reclamation of metals and metal compounds.
4.4	Recycling or reclamation of other inorganic materials.
Address 1	Units 14-17 Mullingar Business Park
Address 2	Mullingar
Address 3	Co Westmeath
Address 4	
	Westmeath
Country	Ireland
Coordinates of Location	-9.17642 54.1592
River Basin District	IEGBNISH
NACE Code	3832
Main Economic Activity	Recovery of sorted materials
<b>AER Returns Contact Name</b>	Jim Dowdall
<b>AER Returns Contact Email Address</b>	jdowdall@enviroguide.ie
<b>AER Returns Contact Position</b>	Environmental Consultant
<b>AER Returns Contact Telephone Number</b>	01 2711896
<b>AER Returns Contact Mobile Phone Number</b>	086 8048500
<b>AER Returns Contact Fax Number</b>	01 2711897
<b>Production Volume</b>	0.0
<b>Production Volume Units</b>	
<b>Number of Installations</b>	0
<b>Number of Operating Hours in Year</b>	0
<b>Number of Employees</b>	0
<b>User Feedback/Comments</b>	
<b>Web Address</b>	

### 2. PRTR CLASS ACTIVITIES

Activity Number	Activity Name
50.1	General
5(c)	Installations for the disposal of non-hazardous waste
50.1	General

### 3. SOLVENTS REGULATIONS (S.I. No. 543 of 2002)

Is it applicable?	No
Have you been granted an exemption ?	No
If applicable which activity class applies (as per Schedule 2 of the regulations) ?	
Is the reduction scheme compliance route being used ?	

# Annual Environmental Report 2011

## 4.1 RELEASES TO AIR

[Link to previous years emissions data](#)

[ PRTR# : W0197 | Facility Name : Wallace Recycling Ltd | Filename : W0197\_2011.xls | Return Year : 2011 ]

18/04/2012 09:45

### SECTION A : SECTOR SPECIFIC PRTR POLLUTANTS

POLLUTANT		METHOD			Please enter all quantities in this section in KGs			
RELEASES TO AIR		ADD EMISSION POINT			QUANTITY			
No. Annex II	Name	M/C/E	Method Code	Designation or Description	Emission Point 1	T (Total) KG/Year	A (Accidental) KG/Year	F (Fugitive) KG/Year
					0.0	0.0	0.0	0.0

[ADD NEW ROW](#) | [DELETE ROW \\*](#) \* Select a row by double-clicking on the Pollutant Name (Column B) then click the delete button

### SECTION B : REMAINING PRTR POLLUTANTS

POLLUTANT		METHOD			Please enter all quantities in this section in KGs			
RELEASES TO AIR		ADD EMISSION POINT			QUANTITY			
No. Annex II	Name	M/C/E	Method Code	Designation or Description	Emission Point 1	T (Total) KG/Year	A (Accidental) KG/Year	F (Fugitive) KG/Year
					0.0	0.0	0.0	0.0

[ADD NEW ROW](#) | [DELETE ROW \\*](#) \* Select a row by double-clicking on the Pollutant Name (Column B) then click the delete button

### SECTION C : REMAINING POLLUTANT EMISSIONS (As required in your Licence)

POLLUTANT		METHOD			Please enter all quantities in this section in KGs				
RELEASES TO AIR		ADD EMISSION POINT			QUANTITY				
Pollutant No.	Name	M/C/E	Method Code	Designation or Description	Emission Point 1	Emission Point 2	Emission Point 3	Emission Point 4	T (Total) KG/Year
210	Dust				257.829	86.189	121.787	163.589	629.394

# Annual Environmental Report 2011

## 5. ONSITE TREATMENT & OFFSITE TRANSFERS OF WASTE

[ PRTR#: W0197 | Facility Name : Wallace Recycling Ltd | Filename : W0197\_2011.xls | Return Year : 2011 ]

18/04/2012 09:45

Please enter all quantities on this sheet in Tonnes

23

Transfer Destination	European Waste Code	Hazardous	Quantity (Tonnes per Year)	Description of Waste	Waste Treatment Operation	Method Used		Location of Treatment	Haz Waste : Name and Licence/Permit No of Next Destination Facility	Haz Waste : Address of Next Destination Facility	Name and License / Permit No. and Address of Final Recoverer / Disposer (HAZARDOUS WASTE ONLY)	Actual Address of Final Destination i.e. Final Recovery / Disposal Site (HAZARDOUS WASTE ONLY)
						Non Haz Waste: Name and Licence/Permit No of Recover/Disposer	Non Haz Waste: Address of Recover/Disposer					
						M/C/E	Method Used					
Within the Country	17 04 02	No	1.16	aluminium	R4	M	Weighed	Offsite in Ireland	A 1 Metal ,AFT WMP 007e	Acragar, ,Mountmellick,Co.Laois ,Ireland		
Within the Country	17 04 02	No	8.464	aluminium	R4	M	Weighed	Offsite in Ireland	Laois Tyre Recycling ,WFP-LS-10-1002-01	Unit 20 Bay Road Business Park, ,Mountmellick ,Co.Laois,Ireland		
Within the Country	17 04 02	No	10.06	aluminium	R4	M	Weighed	Offsite in Ireland	Multimetals ,WFP-WW-09-0014-01	The Murrough ,Wicklow,Co.Wicklow,Ireland		
Within the Country	16 06 01	Yes	12.82	lead batteries	R4	M	Weighed	Offsite in Ireland	Rilta Enviromental ,WCP-DC-09-1192-01	151 Thomas Street, ,Dublin 8,Co.Dublin,Ireland	HJ Enthoven,BI5598,Darley Dale ,Matlock ,Derbyshire ,United Kingdom	Darley Dale ,Matlock ,Derbyshire ,Derbyshire ,United Kingdom
Within the Country	16 06 01	Yes	16.7	lead batteries	R4	M	Weighed	Offsite in Ireland	A 1 Metal ,AFT WMP 007e	Acragar, ,Mountmellick,Co.Laois ,Ireland	HJ Enthoven,BI5598,Darley Dale ,Matlock ,Derbyshire ,Derbyshire ,United Kingdom	Darley Dale ,Matlock ,Derbyshire ,Derbyshire ,United Kingdom
Within the Country	16 06 01	Yes	14.752	lead batteries	R4	M	Weighed	Offsite in Ireland	Laois Tyre Recycling ,WFP-LS-10-1002-01	Unit 20 Bay Road Business Park, ,Mountmellick ,Co.Laois,Ireland	HJ Enthoven,BI5598,Darley Dale ,Matlock ,Derbyshire ,Derbyshire ,United Kingdom	Darley Dale ,Matlock ,Derbyshire ,Derbyshire ,United Kingdom
Within the Country	17 01 07	No	1740.4	mixture of concrete, bricks, tiles and ceramics other than those mentioned in 17 01 06	R3	M	Weighed	Offsite in Ireland	Michael Wallace ,WP-167-2008	Knockycosker, ,Ballinagore, Co.Westmeath,Ireland		
Within the Country	20 01 01	No	107.64	paper and cardboard	R3	M	Weighed	Offsite in Ireland	Greyhound Recycling ,W0205-01	Cragg Avenue ,Clondalkin Industrial Estate,Clondalkin,Co.Dublin ,Ireland		
Within the Country	20 01 01	No	228.23	paper and cardboard	R3	M	Weighed	Offsite in Ireland	Irish Packaging Recycling ,WPR 021/2	Ballymount Road,Walkinstown, ,Dublin 12,Ireland		

# Annual Environmental Report 2011

Within the Country	1 01	No	13.12 paper and cardboard	R3	M	Weighed	Offsite in Ireland	Mulleadys Waste,W0169-01	Cloonaugh,Drumlish,..Co.Lo ngford,Ireland		
Within the Country	17 04 01	No	0.64 copper, bronze, brass	R4	M	Weighed	Offsite in Ireland	Multimetals ,WFP-WW-09-0014-01	The Murrough ,..Wicklow,Co.Wicklow,Irela nd		
Within the Country	17 04 01	No	1.76 copper, bronze, brass	R4	M	Weighed	Offsite in Ireland	Laois Tyre Recycling ,WFP-LS-10-1002-01	Unit 20 Bay Road Business Park,..Mountmellick Co.Laois,Ireland		
Within the Country	20 03 01	No	113.18 mixed municipal waste	R12	M	Weighed	Offsite in Ireland	Mulleadys Waste,W0169-01	Cloonaugh,Drumlish,..Co.Lo ngford,Ireland		
Within the Country	20 03 01	No	103.22 mixed municipal waste	R12	M	Weighed	Offsite in Ireland	Derryclure Landfill,W0029-04	Derryclure ,Portlaois Road,Tullamore,Co.Offaly,Ire land		
Within the Country	16 01 04	Yes	133.9 end-of-life vehicles	R4	M	Weighed	Offsite in Ireland	Erin Recyclers,WP SO-08-93	Deepwater Quay ,Finisklin,Sligo,Co.Sligo,Irel and	Erin Recyclers,WP SO-08-93,Deepwater Quay ,finisklin ,Sligo ,Co.Sligo ,Ireland ,Sligo ,Co.Sligo ,Ireland	
Within the Country	16 01 04	Yes	233.04 end-of-life vehicles other wastes (including mixtures of materials) from mechanical treatment of wastes other than those mentioned in 19	R4	M	Weighed	Offsite in Ireland	A 1 Metal ,AFT WMP 007e	Acragar,..Mountmellick,Co.L aois ,Ireland	0014-01,The Murrough ,Wicklow,..Co.Wicklow,Irela nd	The Murrough ,Wicklow,..Co.Wicklow,Irela nd
Within the Country	19 12 12	No	223.62 12 11 other wastes (including mixtures of materials) from mechanical treatment of wastes other than those mentioned in 19	R4	M	Weighed	Offsite in Ireland	Panda Waste,W0140-03	Beauparc Business Park,Navan,..Co.Meath,Irela nd		
Within the Country	19 12 12	No	1918.31 12 11	R12	M	Weighed	Offsite in Ireland	Derryclure Landfill,W0029-04	Derryclure ,Portlaois Road,Tullamore,Co.Offaly,Ire land		
<b>Within the Country</b>	<b>16 02 11</b>	<b>Yes</b>	discarded equipment containing 1.66 chlorofluorocarbons, HCFC, HFC	R4	M	Weighed	Offsite in Ireland	KMK Metal Recycling,W0113-03	Cappincur Industrial Estate,Daingean Road,Tullamore Co.Offaly,Ireland	Viridor Waste Management,Bp3493LV,Cor nwall Street,Parr Industrial Estate,St Helens ,Merseyside WA91QW,United Kingdom	Cornwall Street,Parr Industrial Estate,St Helens ,Merseyside WA91QW,United Kingdom
Within the Country	16 01 20	No	7.5 glass	R12	M	Weighed	Offsite in Ireland	John Gannon Concrete,WFP-WM-2009-0007-01	Hazelwood ,Kilbeggan,..Co.Westmeath ,Ireland		
Within the Country	20 01 02	No	8.92 glass	R12	M	Weighed	Offsite in Ireland	John Gannon Concrete,WFP-WM-2009-0007-01	Hazelwood ,Kilbeggan,..Co.Westmeath ,Ireland		
Within the Country	20 01 02	No	1.98 glass	R12	M	Weighed	Offsite in Ireland	Mullingar Recycling Resource Centre,WFP-WH-2009-0001-01	The Enterprise Centre,Bishopgate Street,Mullingar,Co.Westme ath,Ireland		
Within the Country	20 02 01	No	26.94 biodegradable waste	R3	M	Weighed	Offsite in Ireland	Conroy Recycling Ltd,WFP-WH-2009-0002-01	Slanebeg,Mullingar,..Co.We stmeath,Ireland		
Within the Country	20 01 40	No	831.7 metals	R4	M	Weighed	Offsite in Ireland	A 1 Metal ,AFT WMP 007e	Acragar,..Mountmellick,Co.L aois ,Ireland		
Within the Country	20 01 40	No	415.2 metals	R4	M	Weighed	Offsite in Ireland	Erin Recyclers,WP SO-08-93	Deepwater Quay ,Finisklin,Sligo,Co.Sligo,Irel and		
Within the Country	20 01 40	No	32.407 metals	R4	M	Weighed	Offsite in Ireland	Laois Tyre Recycling ,WFP-LS-10-1002-01	Unit 20 Bay Road Business Park,..Mountmellick Co.Laois,Ireland		
Within the Country	20 01 40	No	690.34 metals	R4	M	Weighed	Offsite in Ireland	Multimetals ,WFP-WW-09-0014-01	The Murrough ,..Wicklow,Co.Wicklow,Irela nd		
Within the Country	20 03 01	No	819.1 mixed municipal waste	R12	M	Weighed	Offsite in Ireland	Dillon Waste &Recycling Ltd,WFP-KY-10-001	The Kerries ,Tralee,..Co.Kerry,Ireland Clermont		
Within the Country	20 03 01	No	68.7 mixed municipal waste	R12	M	Weighed	Offsite in Ireland	Leinster Enviromental,Wp 2008/06	Park,Haggardstown,Dundalk Co.Louth,Ireland		

# Annual Environmental Report 2011

Within the Country	20 03 01	No	310.64 mixed municipal waste	R12	M	Weighed	Offsite in Ireland	Mulleadys Waste,W0169-01	Cloonaugh,Drumlish,..Co.Lo ngford,Ireland
Within the Country	20 03 01	No	580.06 mixed municipal waste	R12	M	Weighed	Offsite in Ireland	Wers Waste ,WFP-G-09-0002-01	Tuam Business Park,Weir Road,Galway,Co.Galway ,Ireland
Within the Country	20 03 07	No	621.58 bulky waste	D14	M	Weighed	Offsite in Ireland	Oxigen Enviromental Ltd,W0208-01	Ballymount Road,Clondalkin ,Dublin 22,..Ireland
Within the Country	20 03 07	No	20.48 bulky waste	D14	M	Weighed	Offsite in Ireland	Panda Waste,W0140-03	Beauparc Business Park,Navan,..Co.Meath,Irela nd
Within the Country	17 02 01	No	462.7 wood	R12	M	Weighed	Offsite in Ireland	Conroy Recycling Ltd,WFP- WH-2009-0002-01	Slanebeg,Mullingar,..Co.We stmeath,Ireland
Within the Country	17 02 01	No	87.72 wood	R12	M	Weighed	Offsite in Ireland	OCR Waste Management,WFP-RN-10- 0001-01	Office 2 ,Roxborough,..Co.Roscomm on ,Ireland
Within the Country	16 01 03	No	28.42 end-of-life tyres	R12	M	Weighed	Offsite in Ireland	Crumb Rubber ,WFP-LH-10- 0005-01	Mooretown,Dromiskin,Dund alk,Co.Louth,Ireland
Within the Country	16 01 03	No	12.4 end-of-life tyres	R12	M	Weighed	Offsite in Ireland	Wers Waste ,WFP-G-09- 0002-01	Tuam Business Park,Weir Road,Galway,Co.Galway ,Ireland
Within the Country	20 01 36	No	discarded electrical and electronic equipment other than those mentioned in 1.22 20 01 21, 20 01 23 and 20 01 35	R4	M	Weighed	Offsite in Ireland	KMK Metal Recycling,W0113-03	Cappincur Industrial Estate,Daingean Road,Tullamore ,Co.Offaly,Ireland
Within the Country	20 03 01	No	1992.69 mixed municipal waste	R12	M	Weighed	Offsite in Ireland	Greyhound Recycling ,W0205-01	Cragg Avenue ,Clondalkin Industrial Estate,Clondalkin,Co.Dublin ,Ireland
Within the Country	20 03 01	No	64.2 mixed municipal waste	R12	M	Weighed	Offsite in Ireland	Mulleadys Waste,W0169-01	Cloonaugh,Drumlish,..Co.Lo ngford,Ireland
Within the Country	20 03 01	No	9579.49 mixed municipal waste	R12	M	Weighed	Offsite in Ireland	Derryclure Landfill,W0029- 04	Derryclure ,Portlaois Road,Tullamore,Co.Offaly,Ire land
Within the Country	20 03 01	No	97.6 mixed municipal waste	R12	M	Weighed	Offsite in Ireland	Panda Waste,W0140-03	Beauparc Business Park,Navan,..Co.Meath,Irela nd
Within the Country	20 01 11	No	0.58 textiles	R12	M	Weighed	Offsite in Ireland	Textile Recycling,WPR014/2	Glen abbey Complex,Belgard,Tallaght ,Dublin 24,Ireland

\* Select a row by double-clicking the Description of Waste then click the delete button