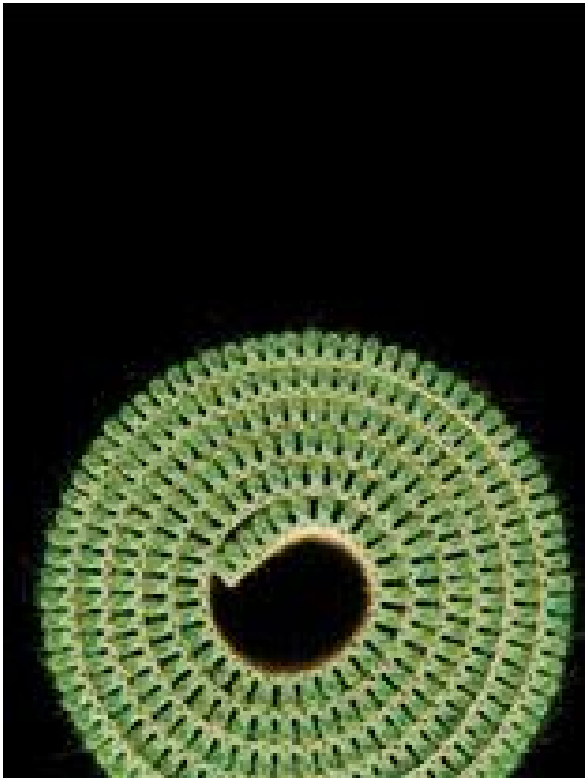


**WATERFORD CARPETS LTD  
ANNUAL ENVIRONMENTAL REPORT  
2011**



**TABLE OF CONTENTS**

<b>TABLE OF CONTENTS</b>	<b>2</b>
<b>LIST OF TABLES</b>	<b>3</b>
<b>1.0 Introduction</b>	<b>4</b>
1.1 <i>Company Details</i>	4
1.2 <i>Company Description</i>	5
1.3 <i>Environmental Policy</i>	6
1.4 <i>Company Organisation Chart</i>	7
<b>2.0 SUMMARY INFORMATION</b>	<b>8</b>
2.1 <i>Emissions to Sewer</i>	8
2.2 <i>Emissions to Surface Waters</i>	8
2.3 <i>Emissions to Atmosphere</i>	10
2.4 <i>Waste Management</i>	11
2.4.1 <i>Hazardous Waste</i>	11
2.4.2 <i>Non-Hazardous Waste</i>	11
2.5 <i>Energy Consumption (2004-2011)</i>	13
2.6 <i>Water Consumption (2004-2011)</i>	14
2.7 <i>Environmental Incidents and Complaints</i>	15
<b>2.8 Agency Monitoring and Enforcement</b>	<b>15</b>
<b>3.0 ENVIRONMENTAL MANAGEMENT</b>	<b>17</b>
3.1 <i>Environmental Objectives and Targets</i>	18
<b>4.0 LICENCE SPECIFIC REPORTS</b>	<b>20</b>
4.1 <i>Noise Survey</i>	20
4.1.1 <i>Boundary Noise Measurements</i>	20
4.1.2 <i>Noise sensitive Locations</i>	21

**LIST OF TABLES**

Table 1. Emissions to Sewer for 2007 – 2011	8
Table 2 Results of Surface Water Monitoring for 2007 – 2011 (SE2)	9
Table 3 Results of Air Emissions Monitoring for 2007 – 2011	10
Table 4 Summary Information on Waste (2007 – 2011)	12
Table 5 Detailed information on Waste Streams 2011	12
Table 6 Water Consumption	14
Table 7 Boundary Noise Monitoring Results (14/09/2011)	20
Table 8 Noise Sensitive Locations Day-time Monitoring Results (14/09/2011)	21
Table 9 Noise Sensitive Locations Night-time Monitoring Results (15/09/2011)	21

## 1.0 Introduction

This Annual Environmental Report (AER) for Waterford Carpets Ltd presents information for the period from 1<sup>st</sup> January to the 31<sup>st</sup> December 2011. The report format follows *EPA Guidance Note for Annual Environmental Report*.

The following items are included in this report:

- Summary of emissions to atmosphere
- Summary of emissions to water
- Waste management report
- Resource consumption summary
- Complaints summary
- Reported incidents summary
- Environmental management programme report and proposal
- Schedule of objectives and targets
- Noise survey results summary
- Water usage report

Waterford Carpets Ltd. has developed its environmental policy as part of its environmental management system. The company has been granted with ISO 14001 Environmental Management Systems Standard Certification in October 2008.

## 1.1 Company Details

Licence Register Number:	P0510-01
Name:	Waterford Carpets Limited.
Address:	Unit 201 Cork Road Industrial Park, Waterford.
Contact Information:	Mr. Noel Cunningham Managing Director Tel: 051-375941 Email: ncunningham@tretford.ie
	Mr. Bart Zdrojowy Environmental Manager Email: bart@tretford.ie

## 1.2 Company Description

Waterford Carpets Limited has been in operation since September 1969 in the IDA Industrial Park Waterford. Waterford Carpets Limited manufactures a ribbed heavy contract non-woven carpet. This carpet is manufactured under the trade name **tretford**. The carpet is manufactured from a combination of goat hair, nylon, rayon and wool.

No dyeing or treatment of the carpet takes place on the site at present, nor does the process of moth proofing.

Waterford Carpets Limited operates a continuous production system from 08:00 Monday to 08:00 Saturday on a three-shift rota system. Over 2009 - 2011 period production was run in short time patterns starting from 3-day week to week-on week-off basis.

At Present Waterford Carpets Limited employs 40 personnel.

Waterford Carpets' management and staff recognise the importance of environmental protection as an essential requirement of its operations. Among the stated values of Waterford Carpets are the following:

- That our products will be safe to make and to use.
- We will conserve natural resources and we will continue to invest in better environment protection.
- Waterford Carpets Ltd. will undertake to conduct its business in a manner, which protects the environment of the Customers, Employees and Community in which it operates.

The challenge is to achieve a high quality environment, to this end; the company is committed to continuous improvement - "reduce, reuse & recycle"- at all levels throughout the organisation.

### 1.3 Environmental Policy

The General Management of Waterford Carpets Limited is committed to pollution prevention and environmental protection at its facility. Waterford Carpets Limited aims to achieve the highest standards of environmental performance in the interest of all our stakeholders, whether they are employees, neighbours, the general public or the natural environment.

Waterford Carpets Limited is committed to complying with all environmental legislation and regulations that may apply to the industry and we will make every effort to comply with the requirements of our Integrated Pollution Control Licence. We will adhere to the principles of responsible care and we strive for continuous improvement in its implementation.

By preparing and implementing an Environmental Management System, which will include policies, objectives and targets, we will administer a continuous programme designed to ensure that the products manufactured at Waterford Carpets Limited will not compromise or damage the environment.

Waterford Carpets Limited will review the Environmental Management System annually. We will also review our environmental aspects register and set Environmental Objectives and targets accordingly.

Waterford Carpets will examine and evaluate the environmental implications of any processes and products, and cleaner technologies will be investigated and utilised where possible. Waste avoidance and reduction plus a waste recycling initiative will be vigorously pursued and implemented.

Waterford Carpets will continuously examine, evaluate and review energy usage in its manufacturing processes and implement an energy conservation programme. We will ensure that adequate operational procedures and emergency plans are implemented and reviewed on an ongoing basis. We will ensure that our employees receive adequate training in relation to our environmental policies and procedures and will review these training needs as may be required.

We are committed to continuous improvement of our Environmental Management System and we will ensure that it shall be integrated at all levels within our organisation. We will strive for ever-improving environmental performance and we will strive to protect the environment for our employees, neighbours and all our other stakeholders.

Noel Cunningham  
Managing Director

## 1.4 Company Organisation Chart

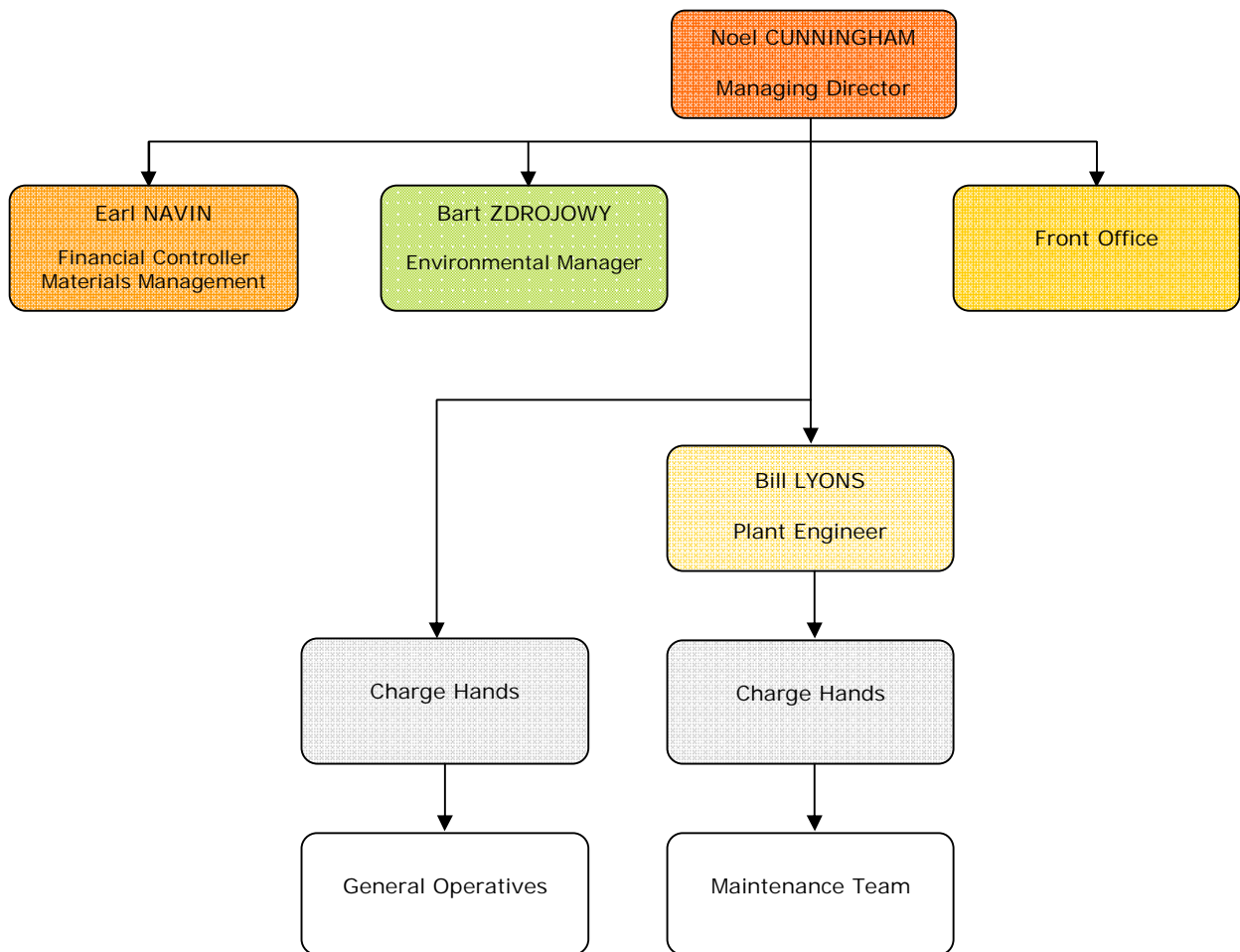


Figure 1. Organisation Chart for Waterford Carpets Ltd.

NB. Environmental Manager has direct environmental responsibilities. All other employees have support roles.

## 2.0 SUMMARY INFORMATION

This section contains a summary of the information regarding:

- Annual emissions data, including discharges to waters, air emissions, waste management and noise.
- Energy and water usage
- Environmental incidents and complaints

This section of the AER provides summary data on emissions/discharges to various environmental media from the Waterford Carpets site.

### 2.1 Emissions to Sewer

This section of the AER provides information pertaining to Waterford Carpets emissions to sewer. The emissions to sewer data indicate overall compliance with the IPPC emission limit values (ELV's). There were no non-compliances recorded during 2011.

Table 1. Emissions to Sewer for 2007 – 2011

Parameter	21/11/2007	18/12/2008	22/12/2009	15/12/2010	01/12/2011	Limit Value	Monitoring Frequency
Temperature	17°C	16°C	15°C	19°C	21°C	40°C max	Annually
PH	7.3	7.6	7.5	7.1	7.6	6-9	Annually
BOD (mg/L)	2	<2	10	9	11	60	Annually
COD (mg/L)	14	<4	104	95	104	1000	Annually
Suspended Solids (mg/L)	3	1	5	6	5	120	Annually

### 2.2 Emissions to Surface Waters

Waterford Carpets discharges non-process water at discharge points SE2 in accordance with Schedule 4(i) of the IPPC Licence (Reg. No. P0510-01).

Non-process water consists of:

- Storm water run-off from roofs.
- Storm water run-off from areas including car parks and paved areas.

Surface water discharges at SE2 are measured on a quarterly basis for pH, COD and conductivity. A visual inspection takes place twice weekly.

A summary of the surface water discharge monitoring results is outlined in the table below.



Table 2 Results of Surface Water Monitoring for 2007 – 2011 (SE2)

Q1		24/01/2007	12/01/2008	17/01/2009	9/03/2010	15/03/2011	Limit Value
	pH	7.1	6.9	7.5	n/a*	6.9	6-9
	COD (mg/l)	28	24	10	n/a*	26	-
	Conductivity (uS/cm)	540	289	154	n/a*	140	-
Q2		10/06/2007	22/04/2008	15/04/2009	25/06/2010	21/06/2011	Limit Value
	pH	7.4	7.7	7.1	7.2	7.1	6-9
	COD (mg/l)	32	84	12	21	20	-
	Conductivity (uS/cm)	480	185	161	154	110	-
Q3		14/08/2007	19/08/2008	08/09/2009	18/08/2010	14/09/2011	Limit Value
	pH	7.1	7.4	7.2	7.2	6.4	6-9
	COD (mg/l)	28	73	18	11	17	-
	Conductivity (uS/cm)	360	203	138	164	106	-
Q4		21/11/2007	18/12/2008	22/12/2009	13/10/2009	01/12/2011	Limit Value
	pH	7.0	7.3	7.1	7.1	7.2	6-9
	COD (mg/l)	34	7	14	14	19	-
	Conductivity (uS/cm)	392	178	109	103	127	-

\*While taking water sample for testing an oily contamination was found in water coming up from the industrial estate. EPA, IDA and Waterford City Council were informed and arrived on site. Sample contaminated, not fit for testing.

Since 2002 surface water monitoring results are within the limits set in IPPC licence Reg. No. P0510-01. No results are available prior to that.

## 2.3 Emissions to Atmosphere

The emissions to atmosphere monitoring at Waterford Carpets Ltd. was carried out to fulfil the requirements of Condition 5 and Schedule 1(i) of IPPC licence registration number P0510-01. Air Emissions Monitoring started in 2002; the results available since demonstrate compliance with the IPPC Licence limit value.

Table 3 Results of Air Emissions Monitoring for 2007 – 2011

	A2-1	A2-2	A2-3	A2-4	A2-5	A2-06	Limit Value (mg/Nm <sup>3</sup> ):
Sampling date:	01/12/2011 08/03/2010 NIU 22/04/2008 NIU	15/03/2011 08/03/2010 22/12/2009 22/04/2008 14/08/2007	15/03/2011 15/12/2010 08/09/2009 15/12/2008 14/08/2007	15/03/2011 NIU 15/04/2009 18/12/2008 21/11/2007	01/12/2011 18/08/2010 22/12/2009 18/12/2008 21/11/2007	07/12/2011 13/10/2010 - - -	
2011	1.01	4.30	7.5	5.31	6.48	2.01	50
2010	5.60	8.45	13.16	-	1.58	2.14	50
2009	-	7.74	4.63	2.11	2.50	-	50
2008	8.87	15.25	7.19	8.72	5.73	-	50
2007	-	2.11	12.24	8.76	5.47	-	50

NIU – Not in use

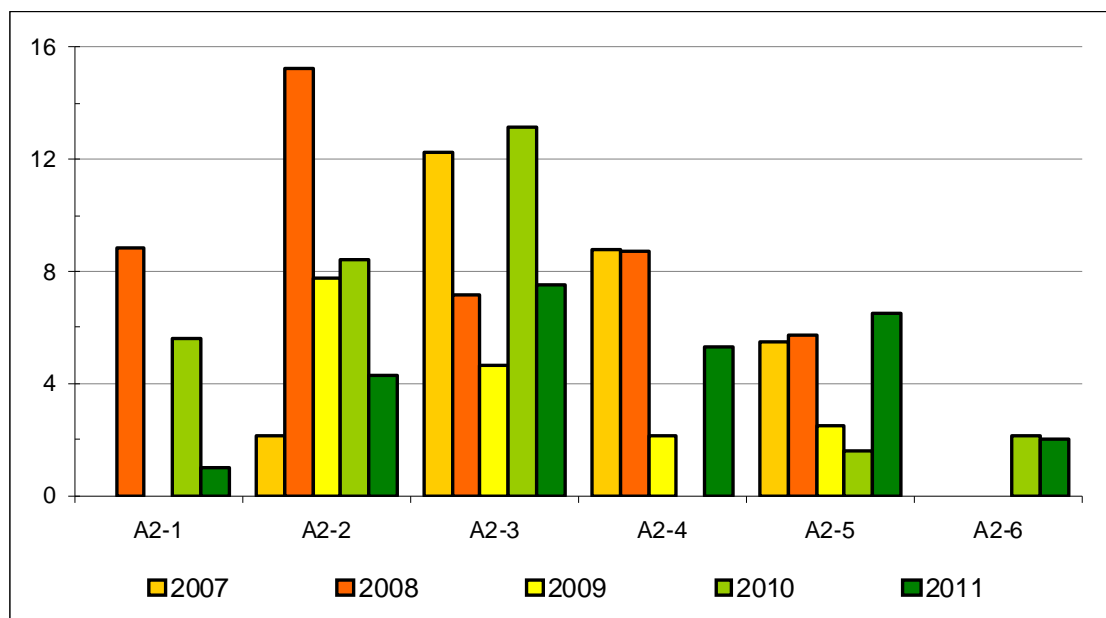


Figure 2 Particulate Emissions 2007-2011. ELV is set on 50mg/Nm<sup>3</sup>.

## 2.4 Waste Management

Waterford Carpets Ltd. maintains full details and records of all waste arising on site in accordance with Condition 7 of the IPPC Licence. This section of the Annual Environmental Report (AER) provides comprehensive information regarding these wastes.

A full record, which shall be open to inspection by authorised persons of the Agency at all times, shall be kept by the licensee on matters relating to the waste management operations and practices at this site.

The records shall as a minimum contain details of the following:

- The names of the agent and transporter of the waste.
- The name of the persons responsible for the ultimate disposal/recovery of the waste.
- The ultimate destination of the waste.
- The tonnage and EWC code for the waste materials listed in schedule 3(1) Hazardous Waste for Disposal/Recovery and schedule 3(2) Other Wastes for Disposal/Recovery sent off site for Disposal/Recovery.
- Details of any rejected consignments.
- The tonnage and EWC code for the waste materials listed in schedule 3(1) Hazardous Waste for Disposal/Recovery and schedule 3(2) Other Wastes for Disposal/Recovery recovered/disposed of on site.

A summary of the waste quantities generated at the Waterford Carpets site is included in Table 2.7. A copy of waste management record is attached.

### 2.4.1 Hazardous Waste

The main source of hazardous waste generated on-site is waste PVC adhesive. Other than that are MV lamps, fluorescent tubes and batteries. All hazardous wastes generated are stored in designated hazardous waste storage areas.

Indaver processes waste adhesive and fire-retardant while Irish Lamp Recycling collects mercury vapour lamps fluorescent tubes and batteries. No ILR collections were recorded in 2011.

### 2.4.2 Non-Hazardous Waste

The main disposed non-haz wastes include carpet trimmings and fibres and general (office/canteen) waste. Non-hazardous wastes destined for recovery were: baled cardboard and cardboard cores, timber pallets and boxes and scrap metal.

Table 4 Summary Information on Waste (2007 – 2011)

	2007	2008	2009	2010	2011	Note
<b>Total</b> quantity of waste (Tonnes)	225.95	265.40	128.60	198.43	138.32	
disposed of off-site	170.99	234.00	110.08	166.80	94.43	D1
recovered on-site	4.50	2.00	-	-	-	R0
recovered off-site	50.46	29.40	18.52	31.63	43.89	R3, R4, R5
<b>Non-hazardous</b> waste (Tonnes)	225.95	264.10	127.84	198.40	135.60	
disposed of off-site	170.99	234.00	110.08	166.80	94.43	D1
recovered on-site	4.50	2.00	-	-	-	R0
recovered off-site	50.46	28.10	17.76	31.60	41.17	R3, R4, R5
<b>Hazardous</b> waste (Tonnes)	-	1.30	0.76	0.03	2.72	
disposed of off-site	-	-	-	-	-	-
recovered off-site	-	1.30	0.76	0.03	2.72	R3, R4

Table 5 Detailed information on Waste Streams 2011

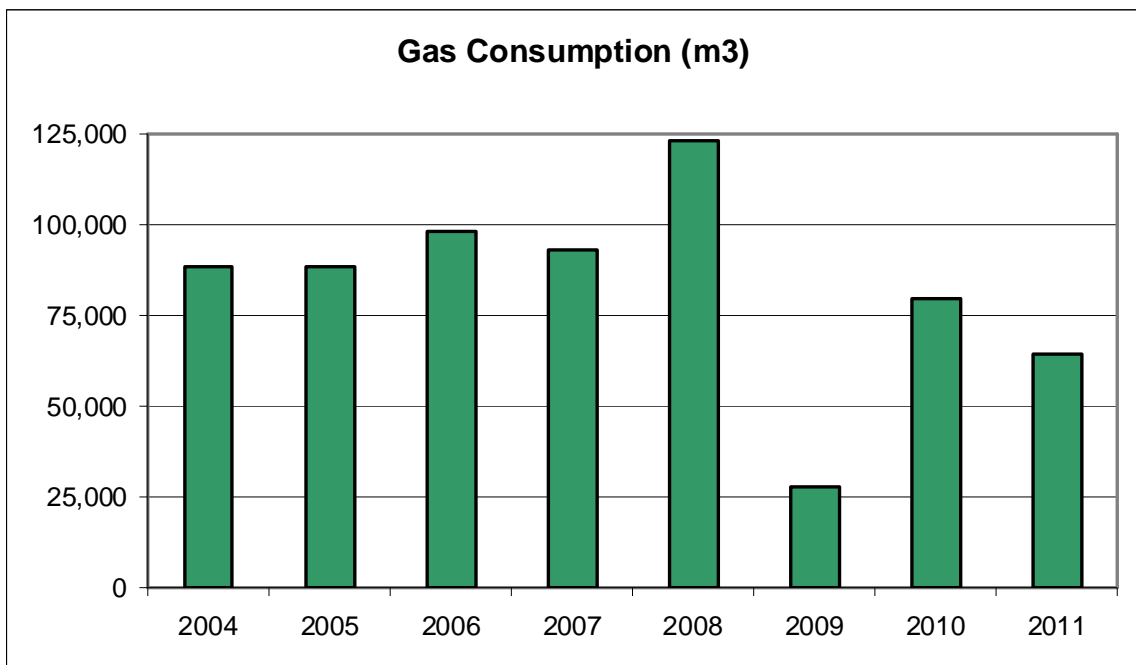
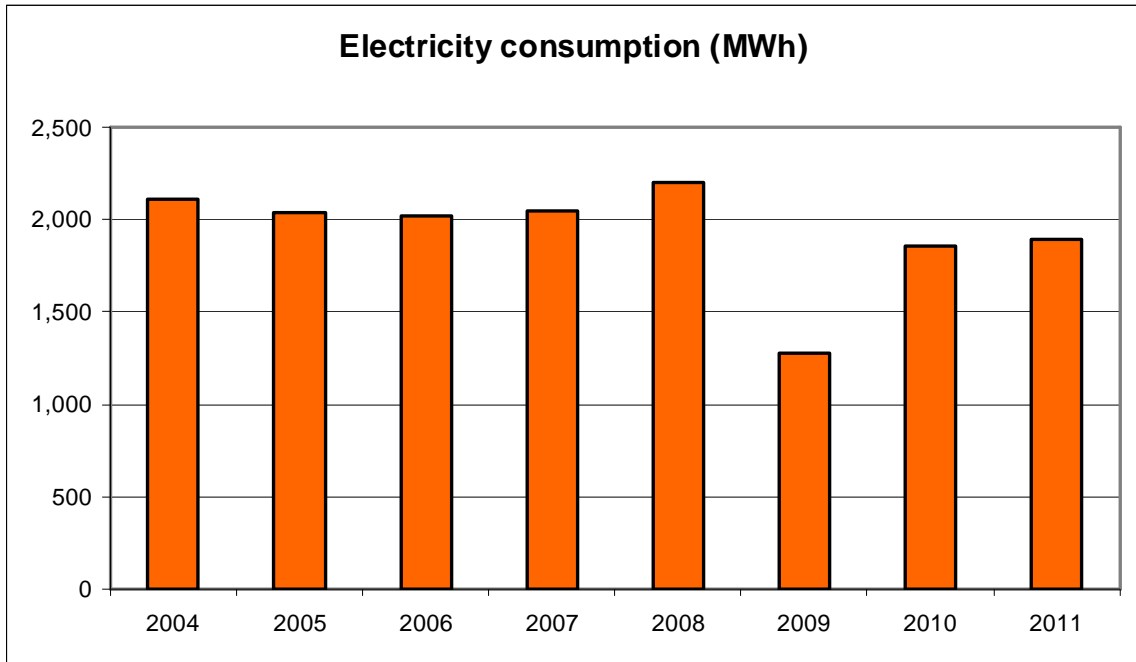
European Waste Catalogue Code	Haz (Yes/No)	Description of Waste	Quantity (t/year)	Disposal/ Recovery Code	Location of Disposal/ Recovery	Name of Waste Disposal/ Recovery Contractor
Hazardous:						
08 04 09*	Y	waste adhesives (...) containing organic solvents or other dangerous substances	0.72 <sup>a</sup>	R3/R4	(c) Bremen, Germany	Nehlsen GmbH & Co. KG
16 03 05*	Y	organic wastes containing dangerous substances	1.8 <sup>b</sup>	R12	(c) Moerdijk, The Netherlands	Afvalstoffen Terminal Moerdijk B.V.
Non hazardous:						
20 03 01	N	mixed municipal waste	94.43	D1	(b) Six Crossroads Bus. Pk	Greenstar
20 01 01	N	paper and cardboard	36.22	R3	(b) Six Crossroads Bus. Pk	Greenstar
20 01 38	N	wood other	0.01	R3	(b) Six Crossroads Bus. Pk	Greenstar
15 01 02	N	plastic packaging	1.6	R3	(b) Six Crossroads Bus. Pk	Greenstar
15 01 04	N	metallic packaging	3.36	R4	(b) Enniscorthy	Molloy Metal Recycling Ltd.

(a) On-site; (b) Off-site (Ireland); (c) Off-site (abroad)

<sup>a</sup> C1 No: 513311, 4 drums PVC, TFS: IE312947/30, disposal date: Jul 13, 2011<sup>b</sup> C1 No: 513311, 10 drums FR3 off-spec fire-retardant, TFS: IE313262/3, disposal date: Oct 27, 2011

### 2.5 Energy Consumption (2004-2011)

	2004	2005	2006	2007	2008	2009	2010	2011
Electricity (MWh)	2,107	2,037	2,020	2,048	2,201	1,279	1,859	1,894
Gas (m <sup>3</sup> )	88,468	88,468	98,077	92,987	123,264	28,122	79,714	64,676



## 2.6 Water Consumption (2004-2011)

Table 6 Water Consumption

	2004	2005	2006	2007	2008	2009	2010	2011
Cubic m	1,364	1,314	1,605	1,668	1,427	1,253	2,530	1,597
Gallons	300,000	289,000	353,000	367,000	314,000	-	-	-

Water consumption in 2004-2008 period reported in gallons, calculated to m<sup>3</sup>. Since 2009 reading reported in cubic metres. Higher than usual water consumption in 2010 due to leakage from corroded water tank, tank replaced.

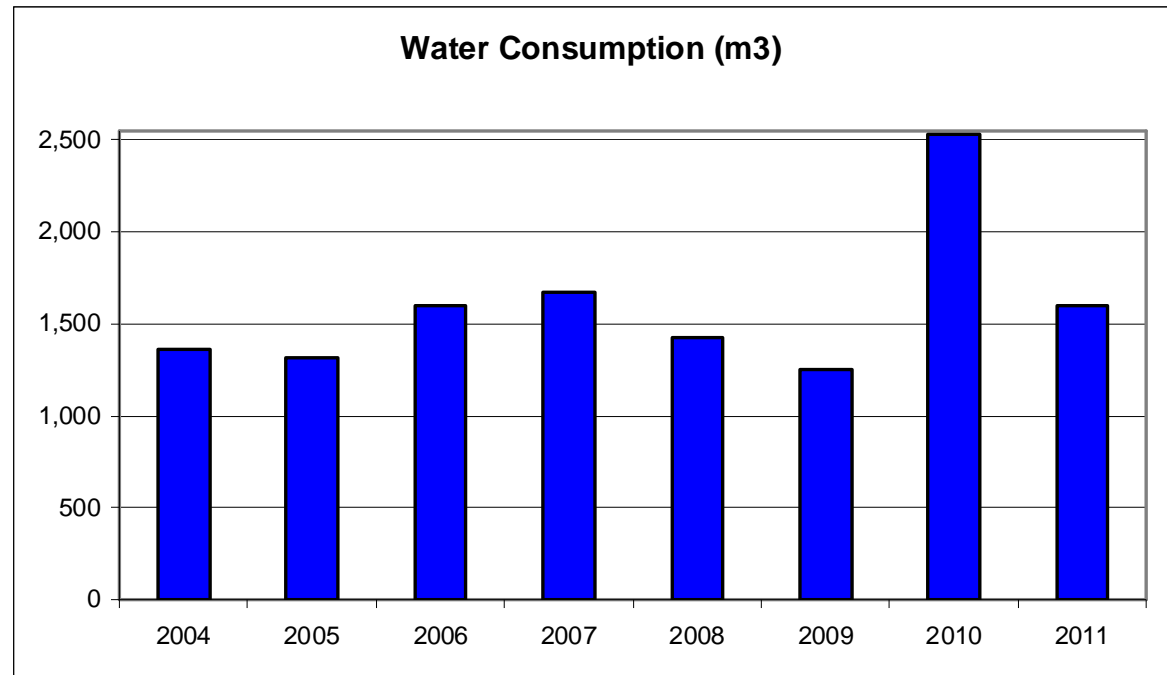


Figure 3 Water Consumption (m<sup>3</sup>)

## 2.7 Environmental Incidents and Complaints

There were no environmental incidents recorded or reported during the 2011 period

There was no environmental complaints received for the period  
January to December 2011

## 2.8 Agency Monitoring and Enforcement

There was one unannounced visit by the agency to Waterford Carpets Ltd during 2011.

### Inspection Reference Number: (P0510-01)sm10eok

This visit took place on the 22<sup>nd</sup> March 2011 and was an unannounced visit by Ms Eimear O'Keeffe of the EPA. Waterford Carpets Ltd was found to be non compliant with two condition of their IPPC licence.

#### 1. Accident Prevention Policy

- Accident Prevention Policy was not available on site for review.

##### Corrective Action:

- Accident Prevention Policy is to be established and made available for review by fourth quarter 2011.

#### 2. Training

- Training of staff in environmental awareness has not been completed to date. A similar non-compliance was noted on the previous inspection reports.

##### Corrective Action:

- Staff training in environmental awareness has been rescheduled to be completed by the end of fourth quarter 2011. This issue was also raised over ISO 14001 EMS Annual Internal Audit on 28<sup>th</sup> April 2011

There were five inspection observations also noted which did not constitute non-compliances but should be addressed.

#### 1. Request for approval

- I refer to your correspondence received by the agency on 09/07/2010 and the additional information received on 13/01/2011 in relation to the new fire-proofing process at you facility (machine no. 7), which emit through the licenced emission point A2-6.

##### Corrective Action:

- I am to advise you that your request has been approved by the Agency in accordance with Condition 1.2 of your licence. The licensee shall ensure that emissions from this process comply with the Conditions of your licence.

#### 2. Bunding

- A number of drums of PROGARD fr3 New Conc. Were noted in the bunded area. There were eight drums stacked up on each bund, which may compromise the capacity of the bund.

##### Corrective Action:

- Stacking of Progard FR3 New Conc. in bunding area has been reviewed to ensure bunding capacity is not compromised.

### 3. Surface Water Monitoring

- The records for the Q3 surface water monitoring were not available on site for review. Mr. Zdrojowy said that surface water monitoring for Q3 of 2010 was completed in September 2010. In addition, the record of surface water inspections recorded the date but did not include any details or comments on the inspection.

#### Corrective Action:

- Results for the Q3 surface water monitoring are published in this AER and the report on arrival was submitted to the Agency. Surface water inspections record sheet has been reviewed to include details/comments on the inspection.

### 4. Emergency Response Procedure

- The emergency response procedure does not include a procedure to control spills and firewater. A similar observation was noted on the previous site inspections.

#### Corrective Action:

- Spillage and Firewater Control procedure is to be incorporated in our Emergency Response procedure at the next revision date.

### 5. Waste Records

- There were no waste dockets available on site for review for general waste taken off site in 2011.

#### Corrective Action:

- Waste collection dockets for Greenstar customers are now available online on a dedicated exchange system website: [www.oneposting.com](http://www.oneposting.com), along with account details, statements and invoices.



### **3.0 ENVIRONMENTAL MANAGEMENT**

Waterford Carpets Ltd. operate and maintain the ISO 14001 certified Environmental Management System (EMS). Therefore the company has documented and implemented an EMS and complies with the requirements of Condition 2.2 of the IPPC Licence (Reg. PO510-01).

A schedule of Environmental Objectives and Targets has been developed by Waterford Carpets in accordance with Condition 2.2.2 of the IPPC Licence. These have been included in the Environmental Management Programme, which designates responsibility for the various objectives and targets. The EMP also outlines the means by which the Objectives and Targets may be achieved and the timescales involved in accordance with Condition 2.2.2.2 of the IPPC Licence. The EMP is revised and updated as required.

Programmes and procedures are in place to ensure effective management and control.

### 3.1 Environmental Objectives and Targets

<b>2012 Schedule of Objectives and Targets</b>				
<b>Prepared by:</b> Bart Zdrojowy, Environmental Manager				<b>Date:</b> February 2012
<b>Approved by:</b> Noel Cunningham, Managing Director				
	<b>Target</b>	<b>Plan</b>	<b>Responsible Party</b>	<b>Timescale (for completion)</b>
<b>Objective 1</b> Procedures and Training	Environmental Awareness	Complete training with relevant employees	Managing Director/ Environmental Manager	September 2012
	Training records	Review training records, address training needs	Managing Director/ Environmental Manager	Completed
	Emergency response	Procedure implementation and employee training	Managing Director/ Environmental Manager	September 2012
	Spillage and fire water control	Implement procedure, staff training	Managing Director/ Environmental Manager	September 2012
<b>Objective 2</b> Gas and energy	Contract review	Review 2011 charges and usage, renew contracts	Environmental Manager/ Managing Director	Completed
	100% Green (renewable) Electricity	Review options, update register of impacts	Environmental Manager	July 2012
	Energy Efficiency Audit	Review recommendations	Environmental Manager	Completed
<b>Objective 3</b> Waste	Contract review	Review 2011 charges and usage, renew contracts	Environmental Manager/ Managing Director	Completed
	Jute composting option	Option investigated by current contractor	Environmental Manager	July 2012

**2012 Schedule of Objectives and Targets****Prepared by:** Bart Zdrojowy, Environmental Manager**Date:** February 2012**Approved by:** Noel Cunningham, Managing Director

	<b>Target</b>	<b>Plan</b>	<b>Responsible Party</b>	<b>Timescale (for completion)</b>
<b>Objective 4</b> Carpet Environmental Certifications	British Research Establishment Environmental Assessment Method	3 <sup>rd</sup> year re-assessment + certificate update	Environmental Manager	April 2012
	Ecospecifier – Australian Green certification Label	Finalise certification	Environmental Manager	May 2012
	NSF-140 Sustainability Assessment for Carpet (USA)	Source out remaining documents, finalise	Environmental Manager	September 2012

## 4.0 LICENCE SPECIFIC REPORTS

### 4.1 Noise Survey

#### 4.1.1 Boundary Noise Measurements

Table 7 Boundary Noise Monitoring Results (14/09/2011)

Boundary Noise Day-time Results							
Location No.	Location description	Measurement Period (Min.)	Sampling Time	L <sub>eq</sub> dB(A)	L <sub>10</sub> dB(A)	L <sub>90</sub> dB(A)	Comments
1	South West Corner Across from workshop	15	10:15	53	55	52	Traffic on the Industrial Estate which was heavy and clearly audible at this location
2	West Face – Across from glue mixing	15	10:36	54	55	50	Traffic on the Industrial Estate which was heavy and clearly. There was no audible noise from the Waterford Carpets facility. The roller shutter door to the Glue Mixing Area was closed.
3	North West Corner	15	10:59	52	52	47	Traffic on the Industrial Estate. No noise audible from the factory.
4	North Face	15	11:18	47	50	44	Traffic on the Industrial Estate. No audible noise from Waterford Carpets facility.
5	North East Corner	15	11:36	51	51	47	Traffic on the Industrial Estate and on Lismore Park Road. No audible noise from Waterford Carpets facility.
6	East Face – across from Loading Bay	15	11:54	52	52	48	The predominant source of noise was traffic on the Industrial Estate.
7	South east Corner – Main Entrance	15	12:11	52	54	47	Traffic on the Industrial Estate. No audible noise from Waterford Carpets facility.
8	South Face	15	12:33	56	59	55	The predominant source of noise was traffic on the Industrial Estate and the compressor which was operating in this area. Because the noise can be characterised as tonal a penalty of +5dB should be added to the level.

Results marked red exceeds the specified day-time limit of 55 dB(A)

#### 4.1.2 Noise sensitive Locations

Table 8 Noise Sensitive Locations Day-time Monitoring Results (14/09/2011)

Noise Sensitive Location Day-time Results							
Location No.	Location description	Measurement Period (Min.)	Sampling Time	L <sub>eq</sub> dB(A)	L <sub>10</sub> dB(A)	L <sub>90</sub> dB(A)	Comments
9	No. 10 Lismore Park	15	13:07	53	53	48	The predominant source of noise was traffic on Lismore Park Road, which was relatively light during the measurement period.
10	No. 95 Lismore Park	15	13:30	53	52	49	The predominant source of noise was traffic on Lismore Park Road. No audible noise from Waterford Carpets facility.
11	No. 112 Lismore Park	15	13:49	52	56	51	The predominant source of noise was traffic on Lismore Park Road. No audible noise from Waterford Carpets facility.
12	No. 123 Lismore Park	15	14:10	50	55	47	The predominant source of noise was traffic on Lismore Park Road. No audible noise from Waterford Carpets facility.

Results marked **red** exceeds the specified day-time limit of 55 dB(A)

Table 9 Noise Sensitive Locations Night-time Monitoring Results (15/09/2011)

Noise Sensitive Location Night-time Results							
Location No.	Location description	Measurement Period (Min.)	Sampling Time	L <sub>eq</sub> dB(A)	L <sub>10</sub> dB(A)	L <sub>90</sub> dB(A)	Comments
9	No. 10 Lismore Park	15	00:10	42	45	40	No audible noise from Waterford Carpets facility. A number of vehicles passed close to the sound level meter during the monitoring period.
10	No. 95 Lismore Park	15	00:32	42	44	40	No audible noise from factory. A number of vehicles passed close to the sound level meter during the monitoring period.
11	No. 112 Lismore Park	15	00:50	41	41	39	No audible noise from Waterford Carpets facility.
12	No. 123 Lismore Park	15	01:08	42	44	41	No audible noise from factory

Results marked **red** exceed the specified night-time limit of 45 dB(A)

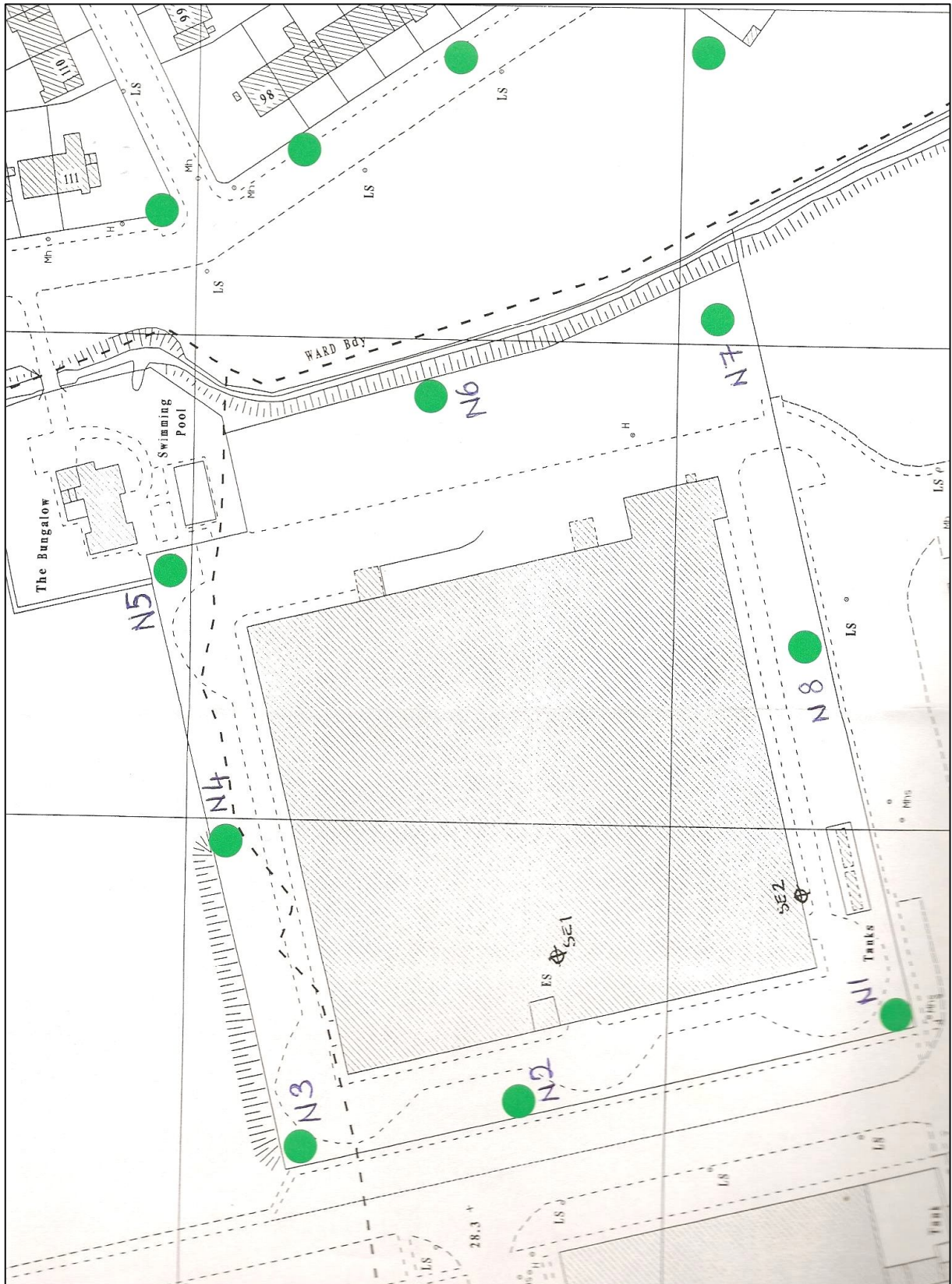


Figure 4 Location of noise monitoring points



Environmental Protection Agency

| PRTR# : P0510 | Facility Name : Waterford Carpets Limited | Filename : P0510\_2011.xls | Return Year : 2011 |

[Guidance to completing the PRTR workbook](#)

# AER Returns Workbook

Version 1.1.13

<b>REFERENCE YEAR</b>	2011
-----------------------	------

**1. FACILITY IDENTIFICATION**

Parent Company Name	Waterford Carpets Limited
Facility Name	Waterford Carpets Limited
PRTR Identification Number	P0510
Licence Number	P0510-01

## Waste or IPPC Classes of Activity

No.	class_name
8.5.2	The dyeing, treatment or finishing (including moth-proofing and fireproofing) of fibres or textiles (including carpet) where the capacity exceeds 1 tonne per day of fibre, yarn or textile material, not included in paragraph 8.5.1.

Address 1	Unit 201
Address 2	IDA Industrial Park
Address 3	Cork Road
Address 4	Waterford
	Cork
Country	Ireland
Coordinates of Location	-7.14475 52.2479
River Basin District	IESE
NACE Code	1393
Main Economic Activity	Manufacture of carpets and rugs
<b>AER Returns Contact Name</b>	Bart Zdrojowy
<b>AER Returns Contact Email Address</b>	bart@tretford.ie
<b>AER Returns Contact Position</b>	Environmental Manager
<b>AER Returns Contact Telephone Number</b>	051-375941
<b>AER Returns Contact Mobile Phone Number</b>	
<b>AER Returns Contact Fax Number</b>	051-379607
<b>Production Volume</b>	0.0
<b>Production Volume Units</b>	
<b>Number of Installations</b>	0
<b>Number of Operating Hours in Year</b>	0
<b>Number of Employees</b>	0
<b>User Feedback/Comments</b>	
<b>Web Address</b>	www.tretford.ie

**2. PRTR CLASS ACTIVITIES**

Activity Number	Activity Name
50.1	General

**3. SOLVENTS REGULATIONS (S.I. No. 543 of 2002)**

Is it applicable?	No
Have you been granted an exemption ?	
If applicable which activity class applies (as per Schedule 2 of the regulations) ?	
Is the reduction scheme compliance route being used ?	

4.1 RELEASES TO AIR

[Link to previous years emissions data](#)

[ PRTR# : P0510 | Facility Name : Waterford Carpets Limited | Filename : P0510\_2011.xls | Return Year : 2011 |

27/03/2012 12:57

SECTION A : SECTOR SPECIFIC PRTR POLLUTANTS

RELEASES TO AIR				Please enter all quantities in this section in KGs			
No. Annex II	POLLUTANT Name	METHOD		QUANTITY			
		M/C/E	Method Code	Designation or Description	Emission Point 1	T (Total) KG/Year	A (Accidental) KG/Year
					0.0	0.0	0.0

\* Select a row by double-clicking on the Pollutant Name (Column B) then click the delete button

SECTION B : REMAINING PRTR POLLUTANTS

RELEASES TO AIR				Please enter all quantities in this section in KGs						QUANTITY			
No. Annex II	POLLUTANT Name	M/C/E	METHOD Method Code	Designation or Description	MC #1	MC #2	MC #3	MC #4	MC #5	MC #7 (dryer)	T (Total) KG/Year	A (Accidental) KG/Year	F (Fugitive) KG/Year
					Emission Point 1	Emission Point 2	Emission Point 3	Emission Point 4	Emission Point 5	Emission Point 6			
86	Particulate matter (PM10)	C	OTH	Determination of Low Range Mass Concentration). Annual 30-min monitoring result (kg/hr) x 45 weeks x 120 hours x 75% to include heating up, stoppages, machine cleaning x 50% to reflect the fact up to a half of machine park was running at time	24.705	124.1325	153.6975	127.575	144.7875	0.76	575.6575	0.0	0.0

\* Select a row by double-clicking on the Pollutant Name (Column B) then click the delete button

SECTION C : REMAINING POLLUTANT EMISSIONS (As required in your Licence)

RELEASES TO AIR				Please enter all quantities in this section in KGs			
Pollutant No.	POLLUTANT Name	METHOD		QUANTITY			
		M/C/E	Method Code	Designation or Description	Emission Point 1	T (Total) KG/Year	A (Accidental) KG/Year
					0.0	0.0	0.0

\* Select a row by double-clicking on the Pollutant Name (Column B) then click the delete button

Additional Data Requested from Landfill operators

For the purposes of the National Inventory on Greenhouse Gases, landfill operators are requested to provide summary data on landfill gas (Methane) flared or utilised on their facilities to accompany the figures for total methane generated. Operators should only report their Net methane (CH4) emission to the environment under T(total) KG/yr for Section A: Sector specific PRTR pollutants above. Please complete the table below:

Landfill:	Waterford Carpets Limited			
Please enter summary data on the quantities of methane flared and / or utilised				
	T (Total) kg/Year	M/C/E	Method Code	Designation or Description
Total estimated methane generation (as per site model)	0.0			Facility Total Capacity m3 per hour
Methane flared	0.0			0.0 (Total Flaring Capacity)
Methane utilised in engine/s	0.0			0.0 (Total Utilising Capacity)
Net methane emission (as reported in Section A above)	0.0			N/A



4.3 RELEASES TO WASTEWATER OR SEWER

[Link to previous years emissions data](#)

| PRTR# : P0510 | Facility Name : Waterford Carpets Limited | Filename : P0510\_2011.xls | Return Year

27/03/2012 12:56

**SECTION A : PRTR POLLUTANTS**

OFFSITE TRANSFER OF POLLUTANTS DESTINED FOR WASTE-WATER TREATMENT OR SEWER					Please enter all quantities in this section in KGs			
POLLUTANT		METHOD			QUANTITY			
No. Annex II	Name	M/C/E	Method Code	Designation or Description	Emission Point 1	T (Total) KG/Year	A (Accidental) KG/Year	F (Fugitive) KG/Year
					0.0	0.0	0.0	0.0

\* Select a row by double-clicking on the Pollutant Name (Column B) then click the delete button

**SECTION B : REMAINING POLLUTANT EMISSIONS (as required in your Licence)**

OFFSITE TRANSFER OF POLLUTANTS DESTINED FOR WASTE-WATER TREATMENT OR SEWER					Please enter all quantities in this section in KGs			
POLLUTANT		METHOD			QUANTITY			
Pollutant No.	Name	M/C/E	Method Code	Designation or Description	Compressor outlet Emission Point 1	T (Total) KG/Year	A (Accidental) KG/Year	F (Fugitive) KG/Year
303	BOD	C	OTH	Sample taken directly from the compressor outlet. Lab analysis result (mg/L) x estimated flow (0.4L/hr) x 45 weeks x 120 hours (the air compressor is in constant operation) divide by 10*6 (mg to kg)	0.02376	0.02376	0.0	0.0
306	COD	C	OTH	See above	0.22464	0.22464	0.0	0.0
240	Suspended Solids	C	OTH	See above	0.0108	0.0108	0.0	0.0

\* Select a row by double-clicking on the Pollutant Name (Column B) then click the delete button

5. ONSITE TREATMENT & OFFSITE TRANSFERS OF WASTE

| PRTR# : P0510 | Facility Name : Waterford Carpets Limited | Filename : P0510\_2011.xls | Return Year : 2011 |

27/03/2012 12:49

Please enter all quantities on this sheet in Tonnes

11

Transfer Destination	European Waste Code	Hazardous	Quantity (Tonnes per Year)	Description of Waste	Waste Treatment Operation	Method Used		Location of Treatment	Haz Waste : Name and Licence/Permit No of Next Destination Facility	Non	Haz Waste : Address of Next Destination Facility	Non Haz Waste: Address of Recover/Disposer	Name and License / Permit No. and Address of Final Recoverer / Disposer (HAZARDOUS WASTE ONLY)	Actual Address of Final Destination i.e. Final Recovery / Disposal Site (HAZARDOUS WASTE ONLY)
						M/C/E	Method Used		Haz Waste: Name and Licence/Permit No of Recover/Disposer	Non Haz Waste: Address of Recover/Disposer				
To Other Countries	08 04 09	Yes	0.72	waste adhesives and sealants containing organic solvents or other dangerous substances	R3	M	Volume Calculation	Abroad	INDAVER IRELAND LIMITED,IRE/AG040/08		Unit 11 South Ring Bus. Pk Kinsale Rd.,,Cork,,Ireland		Nehlsen GbH & Co. KG,D33300040,Louis-Krages-Louis-Krages-Strasse,,Bremen,1028237,Germany	Strasse,,Bremen,1028237,Germany
To Other Countries	16 03 05	Yes	1.8	organic wastes containing dangerous substances	R12	M	Volume Calculation	Abroad	INDAVER IRELAND LIMITED,IRE/AG040/08		Unit 11 South Ring Bus. Pk Kinsale Rd.,,Cork,,Ireland		Afvalstoffen Terminal Moerdijk B.V.,,821780,Vlasweg,12,Moe Vlasweg,12,Moerdijk,4782 rdijk,4782 PW,Netherlands	PW,Netherlands
Within the Country	20 03 01	No	94.43	mixed municipal waste	D1	M	Weighed	Offsite in Ireland	Greenstar Limited,W0177-03 / WCP-KK-11-54-02		Carrignard,,Waterford City,,Ireland		Unit 14a Six Cross Roads Business Park	
Within the Country	20 01 01	No	36.22	paper and cardboard	R3	M	Weighed	Offsite in Ireland	Greenstar Limited,W0177-03 / WCP-KK-11-54-02		Carrignard,,Waterford City,,Ireland		Unit 14a Six Cross Roads Business Park	
Within the Country	15 01 02	No	1.6	plastic packaging	R3	M	Weighed	Offsite in Ireland	Greenstar Limited,W0177-03 / WCP-KK-11-54-02		Carrignard,,Waterford City,,Ireland		Unit 14a Six Cross Roads Business Park	
Within the Country	20 01 38	No	0.01	wood other than that mentioned in 20 01 37	R3	M	Weighed	Offsite in Ireland	Greenstar Limited,W0177-03 / WCP-KK-11-54-02		Carrignard,,Waterford City,,Ireland		Tomgarrow	
Within the Country	15 01 04	No	3.34	metallic packaging	R4	M	Weighed	Offsite in Ireland	Molloy Metal Recycling,WP/08/14(b)		Ballycarney,,Enniscorthy Co. Wexford,,Ireland			

\* Select a row by double-clicking the Description of Waste then click the delete button