



## **Athy Civic Amenity Centre**

### **Annual Environmental Report 2011**

**Waste Licence Reg: W0175-01**

**Original**

**Prepared by:**  
Kildare County Council,  
Aras Chill Dara,  
Devoy Park,  
Naas,  
Co. Kildare.

**April 2012**

<b>Table of Contents</b>	<b>Page</b>
<b>1. Introduction</b> .....	1
<b>2. Site Description and Activities</b> .....	2
2.1. Waste Activities carried out at the Facility.....	2
2.2. Site Description.....	3
<b>3. Waste Quantities and Composition</b> .....	4
<b>4. Summary of Environmental Monitoring</b> .....	5
4.1. Surface Water.....	5
4.2. Emissions to Sewer.....	5
4.3. Dust.....	6
4.4. Noise.....	7
4.5. Summary.....	8
<b>5. Site Development Works</b> .....	9
5.1. Site Development Works during 2009.....	9
5.2. Proposed Development Works for 2010.....	9
<b>6. Environmental Objectives and Targets</b> .....	10
6.1. Proposed Objectives and Targets.....	10
<b>7. Miscellaneous</b> .....	12
7.1. New Procedures Developed During 2009.....	12
7.2. Incidents and Complaints Summary.....	12
7.3. Review of Nuisance Controls.....	12
7.4. Financial Provision.....	12
7.5. Energy Consumption and Generation.....	12

#### **List of Tables**

Table 3.1: Summary of Recyclables Recovered from the Facility.....	4
Table 4.1: Monitoring Results for SW1 and SW2.....	5
Table 4.2: Monitoring Results for WW1.....	6
Table 4.3: Monthly Dust Deposition Results.....	6
Table 4.4: Noise Monitoring Locations.....	7
Table 4.5: Noise Monitoring Results.....	7
Table 4.6: Noise Emission Limits.....	8

#### **Appendices**

Appendix I	Drawing
Appendix II	Monitoring Results

## **1. Introduction**

On the 30<sup>th</sup> October 2003, the Environmental Protection Agency issued Kildare County Council (KCC) a waste licence for its civic amenity facility located at Gallows Hill, Athy, Co. Kildare. The waste licence reference number is W0175-01. This report addresses Condition 11.4 of the waste licence for the facility.

Condition 11.4 states that:

- 11.4.1 The licensee shall submit to the Agency for its agreement within one month after the end of each calendar year, an Annual Environmental Report (AER).
- 11.4.2 The AER shall include as a minimum the information specified in Schedule F: Content of Annual Environmental Report of this licence and shall be prepared in accordance with any relevant written guidance issued by the Agency.

This report addressed the items listed in Schedule F: Content of the Annual Environmental Report of the waste licence for the facility, and covers the reporting period from 1<sup>st</sup> January 2011 to the 31<sup>st</sup> December 2011.

## **2. Site Description and Activities**

### **2.1. Waste Activities carried out at the Facility**

Waste activities at Athy Civic Amenity Centre are restricted to those outlined in Part 1 – Activities Licensed of the waste licence.

#### **Licensed Waste Disposal Activities in accordance with the Third Schedule of the Waste Management Act, 1996**

- Class 11**      **Blending or mixing prior to submission to any activity referred to in a preceding paragraph of this schedule.**  
This activity is limited to the compaction and storage of municipal solid waste on site, prior to disposal off-site.
- Class 12**      **Repackaging prior to submission to any activity referred to in a preceding paragraph of this schedule.**  
This activity is limited to the compaction of municipal solid waste on site, prior to disposal off-site.
- Class 13**      **Storage prior to submission to any activity referred to in a preceding paragraph of this schedule, other than temporary storage pending collection, on the premises where the waste concerned was produced.**  
This activity is limited to the storage of municipal solid waste, prior to disposal offsite.

#### **Licensed Waste Recovery Activities, in accordance with the Fourth Schedule of the Waste Management Act, 1996**

- Class 2**      **Recycling or reclamation of organic substances which are not used as solvents (including composting and other biological transformation processes)**  
This activity is limited to the recycling of textiles, plastics, paper, cardboard, timber, green waste, limited quantities of waste arising from farm and household activities including; household chemicals, paints, inks, adhesives and resins, waste oils, oil filters and agrochemical waste.
- Class 3**      **Recycling or reclamation of metals and metal compounds**  
This activity is limited to the recycling of scrap metal, aluminium cans and white goods.
- Class 4**      **Recycling or reclamation of other inorganic materials**  
This activity is limited to the recycling of glass, household construction and demolition waste, tyres, electronics, fluorescent tubes, batteries and accumulators.
- Class 11**      **Use of waste obtained from any activity referred to in a preceding paragraph of this schedule**  
This activity is limited to the reuse of waste such as household construction and demolition waste, white goods or timber.
- Class 12**      **Exchange of waste for submission to any activity referred to in a preceding paragraph of this schedule**  
This activity is limited to the exchange of waste that can be reclaimed and reused such as timber pallets and tyres.
- Class 13**      **Storage of waste intended for submission to any activity referred to in a preceding paragraph of this schedule, other than temporary storage pending collection, on the premises where such waste is produced**  
This activity is limited to the storage of waste types authorised by this licence at the facility prior to recovery at an appropriate facility.

Members of the public and small commercial vehicles access the site. The activities carried out at each area are described in the subsections below.

## **2.2. Site Description**

Athy Civic Amenity Centre is a purpose built waste management facility and is located approximately 200 metres off the N78 road between Athy and Kilcullen. The facility was constructed on land owned by Kildare County Council which had historically been used for the storage of road maintenance equipment.

The household hazardous waste building was constructed with a bunded concrete floor slab, structural steel frame, profiled metal cladding and blockwork walls. The control building was constructed as a single storey, 'bungalow-like' structure. It contains the administration office, canteen, toilets and shower area. An 18m long weighbridge was installed adjacent to the control building.

The site consists of a split level area in the middle of the facility to allow members of the public to dispose of and recycle waste. This was constructed in a 'zig-zag' fashion to accommodate the skips below. A compactor unit was also installed adjacent to the split level area. This facilitates the disposal and compaction of municipal waste.

The civic amenity centre is surrounded by a 2m high palisade fence, for security of the site.

### 3. Waste Quantities and Composition

The quantity and composition of material received for recovery at the facility from the 1<sup>st</sup> January 2011 to the 31<sup>st</sup> December 2011 is outlined in Table 3.1.

**Table 3.1. Summary of Recyclables Recovered (Tonnes) from the Facility (2006 – 2011)**

Material	EWC	2006 (t)	2007 (t)	2008 (t)	2009 (t)	2010 (t)	2011 (t)
Cardboard	15 01 01	48.86	54.90	49.86	30.78	14.98	17.34
Newspaper	20 01 01	46.28	53.08	55.52	29.78	19.36	19.9
Bottles	15 01 07	32.62	45.18	48.88	24.68	14.62	14.66
Cans	15 01 04	2.61	4.02	5.48	3.02	2.62	2.26
Clothes	20 01 11	15.96	23.84	24.82	8.42	6.62	3.74
Electrical Goods	20 01 35	80.06	69.10	87.22	66.72	56.44	58.04
Batteries	20 01 33	6.46	5.74	3.40	2.3	1.92	0.94
Flat Glass	20 01 02	3.36	-	-	9.28	2.78	1.04
Vegetable Oil	20 01 25	0.52	1.90	1.18	0.36	0.38	0.2
Gas Bottles	16 05 05	0.44	-	-	-	-	-
Fluorescent Tubes	20 01 21	0.1	0.12	0.08	0.04	0.1	-
Metal	20 01 40	-	24.96	38.04	26.12	20.66	17.18
Plastic	15 01 02	-	12.70	7.76	23.98	6.26	4.04
Green Waste	20 02 01	-	27.26	84.60	28.82	21.82	16.44
Misc. Hazardous	20 01 27	-	12.30	3.38	2.42	6.5	7.1
Bulk Waste	20 03 07	-	154.78	196.62	126.68	102.8	89.32
Domestic Waste	20 03 01	-	319.26	323.02	344	333.86	263.54
<b>Total</b>		<b>237.51</b>	<b>809.14</b>	<b>929.86</b>	<b>727.4</b>	<b>611.72</b>	<b>515.74</b>

The figures above outline the recovery of recyclables for the 2006, 2007, 2008, 2009, 2010, 2011 reporting periods. The figures show that the decline in waste volumes seen in 2010 has continued into 2011, across most waste streams. This was mainly as a result of reduced opening hours at the facility and the economic downturn.

## 4. Summary of Environmental Monitoring

Condition 8 and Schedule D of the Waste Licence specify the environmental monitoring requirements for the facility. The following sections discuss the results from the monitoring events during the monitoring period.

Environmental monitoring of the Surface water and emissions to sewer at the facility was carried out on the 20<sup>th</sup> October and the 6<sup>th</sup> December 2011. Noise monitoring was carried out on the 27<sup>th</sup> October 2011. Dust monitoring was carried out over a 30-day period during August and September 2011. The environmental media monitored at the facility are as follows:

1. Surface Water
2. Emissions to Sewer
3. Air Quality – Dust
4. Noise

Unless otherwise specified, monitoring was carried out at those locations set out in Table D1.1. of the waste licence and in Map of Environmental Monitoring Locations which is included in Appendix I.

### 4.1. Surface Water

Two surface water monitoring points are defined in Schedule D of the waste licence, SW1 and SW2. SW 1 was dry during both of the sampling events.

### 4.2. Emissions to Sewer

#### 4.2.1 Monitoring Locations

Sampling is taken from the point of emission to sewer (WW1) as shown on Figure J.1.1. Map of Environmental Monitoring Locations. WW1 was dry during the September sampling event.

#### 4.2.2. Monitoring Parameters

The samples were analysed for the parameters listed in Table D.5.1 in the waste licence. The results are presented in Table 4.2.

**Table 4.2. Monitoring Results for WW1**

WW 1	20/10/11	06/12/11
pH	8.0	8.3
Biochemical Oxygen Demand (mg/l)	136	112
Chemical Oxygen Demand (mg/l)	330	262
Total Suspended Solids (mg/l)	34	63
Fats, Oils & Grease (mg/l)	10	<5
Total Phosphorous (mg/l)	9.8	4.6
Total Nitrogen (mg/l)	85.3	43.2
Ammonia (mg/l)	70.7	36.8

#### 4.2.3. Interpretation of Results

pH, COD and fats, oils and grease remained similar to the previous year.

The wastewater from the site will continue to be monitored and analysed for these parameters on a bi-annual basis in 2012.

**Table 4.2. Monitoring Results for SW 2**

SW 2	20/10/11	06/12/11
pH	7.1	7.7
Biochemical Oxygen Demand (mg/l)	<1	<1
Chemical Oxygen Demand (mg/l)	-	-
Total Suspended Solids (mg/l)	<2	11
Fats, Oils & Grease (mg/l)	<5	<5
Mineral oil ( $\mu\text{g/l}$ )	<100	<100

### **4.3. Dust**

#### **4.3.1. Monitoring Locations**

Dust monitoring was carried out at four locations in accordance with Schedule D of the licence. These locations are shown on Appendix I Map of Environmental Monitoring Locations. Two of these monitoring points are on the site boundary and two are located in the neighbouring road maintenance yard.

#### **4.3.2. Monitoring Parameters**

Bergerhoff gauges were used to determine total dust deposition. Four gauges were set up so that the dust jars were at a height of at least 1.5m above the ground and the jars were set in place during the monthly monitoring events.

#### **4.3.3. Monitoring Results**

The results for total dust deposition are presented in Table 4.3.

**Table 4.3. Monthly Dust Deposition Results**

From	To	D1 mg/m <sup>2</sup> /d	D2 mg/m <sup>2</sup> /d	D3 mg/m <sup>2</sup> /d	D4 mg/m <sup>2</sup> /d
03/08/10	03/09/10	353	927	104	229

#### **4.3.4. Interpretation of Results**

The dust deposition levels at D 1 were slightly elevated. All other monitoring points were below the mean daily dust deposition limit as set out in Schedule C.2 of the waste licence for the facility (350mg/m<sup>2</sup>/d).

### **4.4. Noise**

#### **4.4.1. Monitoring Parameters**

As per Schedule D of the waste licence, the annual noise survey was carried out on the 27<sup>th</sup> October 2011 when weather conditions were found to be suitable. Noise monitoring was undertaken at the four locations as shown on the Map of Environmental Monitoring Locations.

Noise monitoring was carried out during the day between the hours of 11:30 and 16:00 for 30 minute intervals at each location. No night time noise monitoring is required at the facility. All measurements were taken in accordance with ISO 1996 (Description and Measurement of Environmental Noise) and the EPA Environmental Noise Survey Guidance Document.



The survey was carried out using a Brüel and Kjær 2250 Type 1 Sound Level Meter (SLM) with an outdoor microphone unit Type 4198.

The instrument was calibrated prior to commencing the survey using the recommended calibration procedure and a known pure tone noise source. The unit was again calibrated on completion of the survey to record drift during the course of the day. Drift is normally associated with battery fade and temperature. The unit had not drifted.

Good measurements require calm conditions to avoid spurious effects on the microphone, particularly at low frequencies. An average wind speed of less than 5 m/s is the preferred limit when noise measurements are being taken, with 7 m/s an upper limit. Weather conditions during the monitoring were dry, bright with a wind speed of less than 5m/s for the entire period.

#### **4.4.2. Monitoring Locations**

Monitoring was conducted at four locations as specified in the waste licence. The locations are shown on Figure J.1.1. Map of Environmental Monitoring Locations and summarised in Table 4.4

**Table 4.4. Noise Monitoring Locations**

<b>Monitoring Location</b>	<b>Description</b>
N1	Located on the south western boundary of the facility
N2	Located just to the east of the facility in the grounds of the adjacent quarry/council yard/depot
S1	Located in a housing estate northwest of the facility
S2	Located to the west of the facility adjacent to the access road

#### 4.4.4. Monitoring Results

Table 4.5. Noise Monitoring Results

Location	Date	Time	L <sub>Aeq</sub>	L <sub>AF10</sub>	L <sub>AF90</sub>	Source of Noise
N1	27/10/2011	11.47	49	48	37	The dominant noise is works going on behind the site at the petrol station (banging noises etc), road traffic on the Athy Road , traffic entering and exiting the CA Site and bird song. On site noise from the general activities at the CA Site.
N2	27/10/2011	12.26	47	46.5	39	Activities in the CA site, bird song, helicopter over head for 2 minutes and traffic on the N78 could be heard in the background.
S1	27/10/2011	15.10	48	50	40	Dominant noise is general residential noise e.g cars going up and down the residential street. Background noise is coming from the traffic on the N78, the Council Depot Yard, the CA site and bird song.
S2	27/10/2011	14.27	45	46	38	Background noise is coming from traffic on the N78, the council depot yard , the CA Site, activities in the housing estate and bird song.

#### 4.4.5. Interpretation of Results

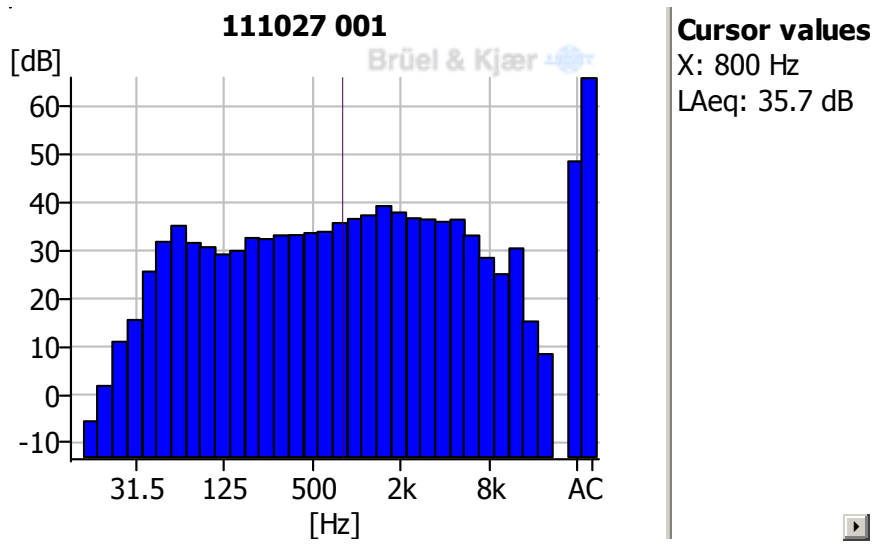
The noise levels of N1, N2, N3 and N4 were within the noise emission limits.

A tonal element was present at Monitoring Point N1. It had a tone frequency of 12,000 Hz. The tone may have come from the works taking place in the petrol station behind the C.A. site. The tone was not audible, however it was picked up on the Noise Monitor.

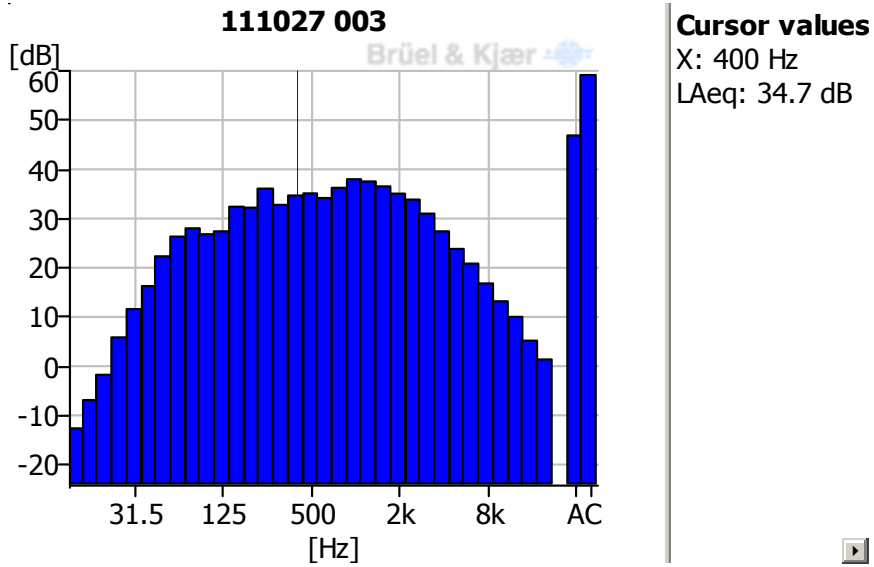
#### 4.4.6. Assessment of Tonal Components

All measurements were subject to a one-third octave band analysis to identify tonal components within the noise measured and the results of the analysis are presented below. A tonal element was present at Noise Monitoring Point N1 in the noise data analysed.

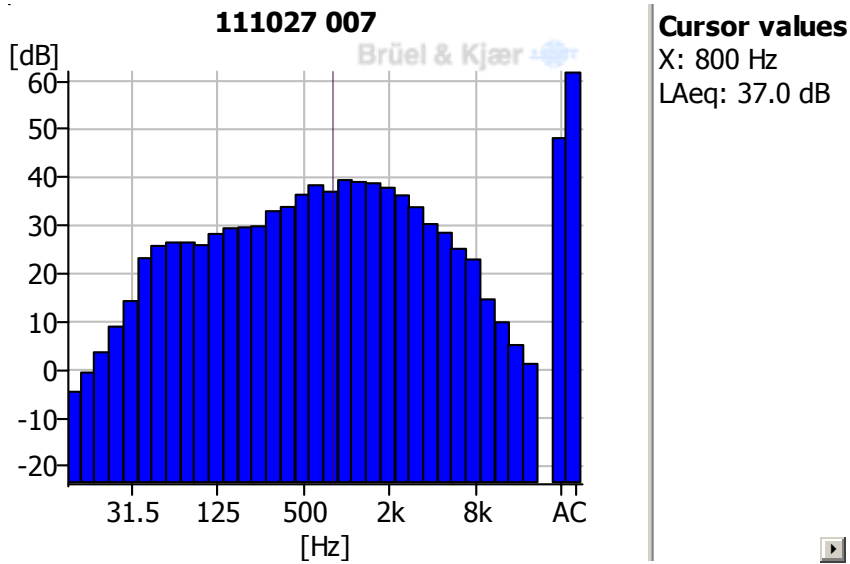
#### One-Third Octave Band Analysis



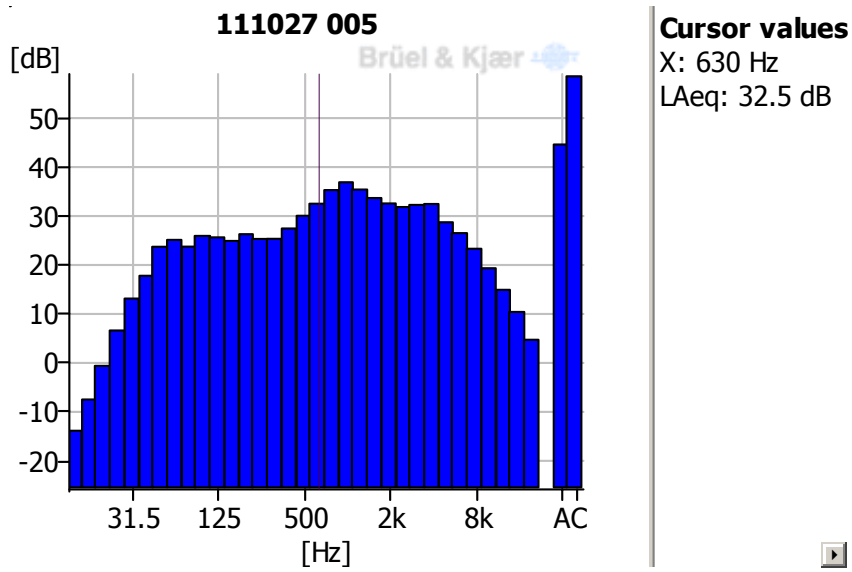
**Figure 5.19** Noise Location N1 1/3 Octave Band Analysis



**Figure 5.20** Noise Location N2 1/3 Octave Band Analysis



**Figure 5.21** Noise Location S1 1/3 Octave Band Analysis



**Figure 5.22** Noise Location S2 1/3 Octave Band Analysis

## **5. Site Development Works**

### **5.1 Site Development Works During 2011**

#### **5.1.1. Civic Waste Facility**

The Civic Amenity Site opened in August 2005 and has been maintained to a high standard by Kildare County Council.

A concession contract was awarded to Oxigen Environmental to operate the site. They took over the running of the site on the 8<sup>th</sup> December 2011

### **5.2. Proposed Development Works for 2012**

There are no proposed development works for 2012.







## **7. Miscellaneous**

### **7.1. New Procedures Developed During 2011**

No new procedures were implemented during 2011.

### **7.2. Incidents and Complaints Summary**

The facility manager records all site incidents and complaints on a register, which is held at the site office.

There were no incidents or complaints recorded at the facility during 2011.

### **7.3. Review of Nuisance Controls**

Athy Civic Amenity Centre is maintained to a very high standard by Kildare County Council. All loose litter at the site and on the site access road is removed by site staff. All vehicles delivering or removing waste to or from the facility are appropriately covered to minimise littering. This will be continued by the new operators of the site.

### **7.4. Financial Provision**

An annual contribution of €7,732 is paid to the Agency towards the cost of monitoring the facility, or otherwise in performing any functions in relation to the activity.

### **7.5. Energy Consumption and Generation**

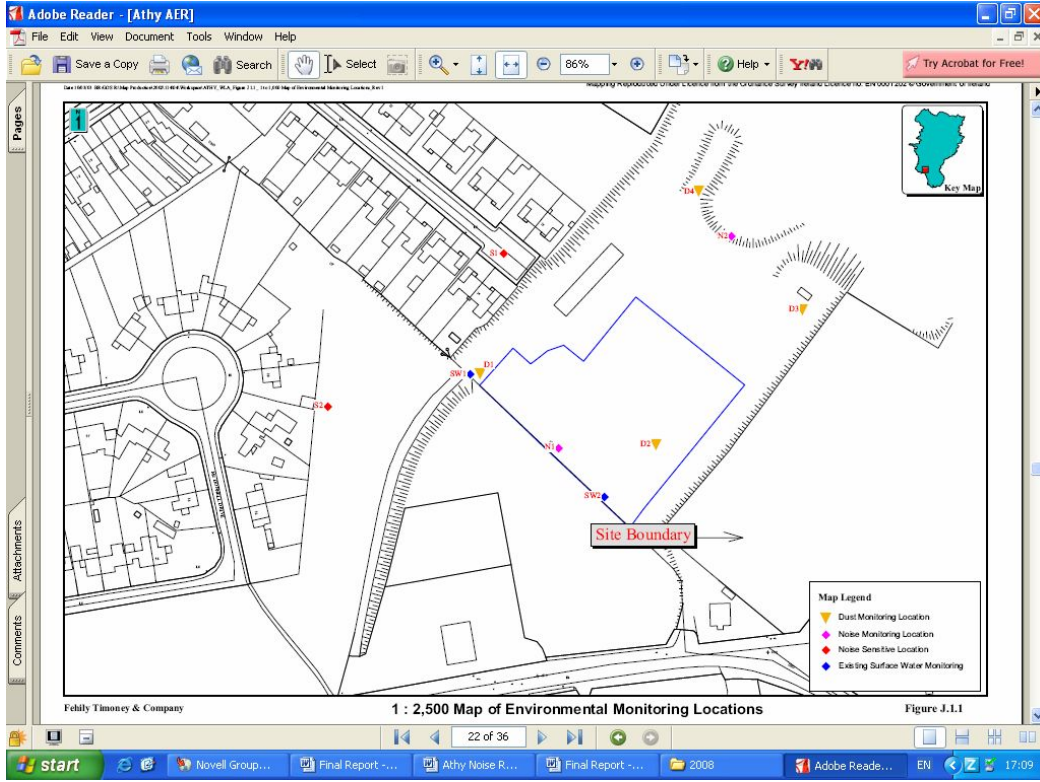
The figures for energy use in 2011 are as follows:

- Electricity: 73,400 (approximate)
- Fuel: 1,500 litres (approximate)
- Water: 1000 m<sup>3</sup> (approximate)

Water usage is not metered, so consumption is approximate. The electrical usage is also estimated.

# ***Appendix I***

## ***Drawings***



***Appendix II***  
***Monitoring Results***

Adobe Reader - [Oct 2011.pdf]

File Edit View Document Tools Window Help

Save a Copy Search Select 122% Help Try Acrobat for Free

21/10/2011

339174	D4	Settleable Dust (Bergerhoff Method)	229	mg/sq.m/day
339173	D3	Settleable Dust (Bergerhoff Method)	104	mg/sq.m/day
339172	D2	Settleable Dust (Bergerhoff Method)	927	mg/sq.m/day
339171	D1	Settleable Dust (Bergerhoff Method)	353	mg/sq.m/day
339169	SW 2. 20/10/11	BOD (d)	<1	mg/l
		Fats, Oils and Greases	<5	mg/l
		Mineral Oil (by calculation)	<100	ug/l
		pH	7.1	pH Units


13 of 59

start Novell GroupWise... 3 Microsoft Office... Results Oct 2011.pdf Athy AER EN 17:12

Adobe Reader - [Oct 2011.pdf]

File Edit View Document Tools Window Help

Save a Copy Search Select 122% Help Try Acrobat for Free



**Complete Laboratory Solutions**

**Complete Laboratory Solutions**  
 Ros Muc, Co. Galway  
 T: 091 574355  
 F: 091 574356  
 E: services@cls.ie  
 www.completelabsolutions.com

Lab ID	Sample Description	Test Name	Result	Units
339169	SW 2. 20/10/11	Suspended Solids	<2	mg/l
339168	WW1. Waste water. 20/10/11	Ammonia as N	70.7	mg/l
		BOD (d)	136	mg/l
		COD	330	mg/l
		Fats, Oils and Greases	10	mg/l
		pH	8.0	pH Units
		Sulphate	24.1	mg/l
		Suspended Solids	34	mg/l
		Total Nitrogen as N (d)	85.3	mg/l
		Total Phosphorus as P (d)	9.8	mg/l

14 of 59

start Novell GroupWise... 3 Microsoft Office... Results Oct 2011.pdf Athy AER EN 17:12

Adobe Reader - [Dec 2011 Jan.pdf]

File Edit View Document Tools Window Help

Save a Copy Search Select 122% Help Try Acrobat for Free

(Filtration)  
(Environmental Waters)

---

**07/12/2011**

348266	SW 2. 06/12/11	BOD (d)	<1	mg/l
		Fats, Oils and Greases	<5	mg/l
		Mineral Oil (by calculation)	<100	ug/l
		pH	7.7	pH Units
		Suspended Solids	11	mg/l

---

348265	WW1. Waste water. 06/12/11	Ammonia as N	36.8	mg/l
		BOD (d)	112	mg/l
		COD	262	mg/l
		Fats, Oils and Greases	<5	mg/l
		pH	8.3	pH Units
		Sulphate	31.2	mg/l

13 of 52

start Novell Group... 3 Microsoft ... Results Oct 2011.pdf Athy AER Dec 2011 Jan... EN 17:13

***Appendix III***  
***PRTR Workbook***



| PRTR# : W0175 | Facility Name : Athy Civic Amenity Centre | Filename :  
W0175\_2011.xls | Return Year : 2011 |

03/04/2012 16:18

[Guidance to completing the PRTR workbook](#)

# AER Returns Workbook

Version 1.1.13

<b>REFERENCE YEAR</b>	2011
-----------------------	------

## 1. FACILITY IDENTIFICATION

Parent Company Name	Kildare County Council
Facility Name	Athy Civic Amenity Centre
PRTR Identification Number	W0175
Licence Number	W0175-01

### Waste or IPPC Classes of Activity

No.	class_name
3.12	Repackaging prior to submission to any activity referred to in a preceding paragraph of this Schedule.
3.11	Blending or mixture prior to submission to any activity referred to in a preceding paragraph of this Schedule.
3.13	Storage prior to submission to any activity referred to in a preceding paragraph of this Schedule, other than temporary storage, pending collection, on the premises where the waste concerned is produced.
4.11	Use of waste obtained from any activity referred to in a preceding paragraph of this Schedule.
4.12	Exchange of waste for submission to any activity referred to in a preceding paragraph of this Schedule.
4.13	Storage of waste intended for submission to any activity referred to in a preceding paragraph of this Schedule, other than temporary storage, pending collection, on the premises where such waste is produced.
4.2	Recycling or reclamation of organic substances which are not used as solvents (including composting and other biological transformation processes).
4.3	Recycling or reclamation of metals and metal compounds.
4.4	Recycling or reclamation of other inorganic materials.
Address 1	Gallowshill
Address 2	Athy
Address 3	Co Kildare
Address 4	
	Kildare
Country	Ireland
Coordinates of Location	-6.96599 52.9953
River Basin District	IESE
NACE Code	3821
Main Economic Activity	Treatment and disposal of non-hazardous waste
AER Returns Contact Name	Claire McLaughlin
AER Returns Contact Email Address	cmclaughlin@kildarecoco.ie
AER Returns Contact Position	Technician
AER Returns Contact Telephone Number	087 2795178
AER Returns Contact Mobile Phone Number	087 2795178
AER Returns Contact Fax Number	
Production Volume	0.0
Production Volume Units	
Number of Installations	0
Number of Operating Hours in Year	0
Number of Employees	0
User Feedback/Comments	
Web Address	

## 2. PRTR CLASS ACTIVITIES

Activity Number	Activity Name
50.1	General
50.1	General

## 3. SOLVENTS REGULATIONS (S.I. No. 543 of 2002)

Is it applicable?	
Have you been granted an exemption ?	
If applicable which activity class applies (as per Schedule 2 of the regulations) ?	
Is the reduction scheme compliance route being used ?	



4.1 RELEASES TO AIR

[Link to previous years emissions data](#)

| PRTR# : W0175 | Facility Name : Athy Civic Amenity Centre | Filename : W0175\_2011.xls | Return Year : 2011 |

03/04/2012 16:19

SECTION A : SECTOR SPECIFIC PRTR POLLUTANTS

POLLUTANT		METHOD			QUANTITY			
No. Annex II	Name	M/C/E	Method Code	Designation or Description	Emission Point 1	T (Total) KG/Year	A (Accidental) KG/Year	F (Fugitive) KG/Year
					0.0	0.0	0.0	0.0

\* Select a row by double-clicking on the Pollutant Name (Column B) then click the delete button

SECTION B : REMAINING PRTR POLLUTANTS

POLLUTANT		METHOD			QUANTITY			
No. Annex II	Name	M/C/E	Method Code	Designation or Description	Emission Point 1	T (Total) KG/Year	A (Accidental) KG/Year	F (Fugitive) KG/Year
					0.0	0.0	0.0	0.0

\* Select a row by double-clicking on the Pollutant Name (Column B) then click the delete button

SECTION C : REMAINING POLLUTANT EMISSIONS (As required in your Licence)

POLLUTANT		METHOD			QUANTITY			
Pollutant No.	Name	M/C/E	Method Code	Designation or Description	Emission Point 1	T (Total) KG/Year	A (Accidental) KG/Year	F (Fugitive) KG/Year
					0.0	0.0	0.0	0.0

\* Select a row by double-clicking on the Pollutant Name (Column B) then click the delete button

Additional Data Requested from Landfill operators

For the purposes of the National Inventory on Greenhouse Gases, landfill operators are requested to provide summary data on landfill gas (Methane) flared or utilised on their facilities to accompany the figures for total methane generated. Operators should only report their Net methane (CH4) emission to the environment under T(total) KG/yr for Section A: Sector specific PRTR pollutants above. Please complete the table below:

Landfill:

Athy Civic Amenity Centre

Please enter summary data on the quantities of methane flared and / or utilised

	T (Total) kg/Year	M/C/E	Method Used		Facility Total Capacity m3 per hour
			Method Code	Designation or Description	
Total estimated methane generation (as per site model)	0.0				N/A
Methane flared	0.0				0.0 (Total Flaring Capacity)
Methane utilised in engine/s	0.0				0.0 (Total Utilising Capacity)
Net methane emission (as reported in Section A above)	0.0				N/A

4.2 RELEASES TO WATERS

[Link to previous years emissions data](#)

| PRTR# : W0175 | Facility Name : Athy Civic Amenity Centre | Filename : W0175\_2011.xls | Return Year : 2011 |

03/04/2012 16:20

SECTION A : SECTOR SPECIFIC PRTR POLLUTANTS

Data on ambient monitoring of storm/surface water or groundwater, conducted as part of your licence requirements, should NOT be submitted under AER / PRTR Reporting as this only concerns Releases from your facility

RELEASERS TO WATERS					Please enter all quantities in this section in KGs			
POLLUTANT		M/C/E	Method Used		QUANTITY			
No. Annex II	Name		Method Code	Designation or Description	Emission Point 1	T (Total) KG/Year	A (Accidental) KG/Year	F (Fugitive) KG/Year
					0.0	0.0	0.0	0.0

\* Select a row by double-clicking on the Pollutant Name (Column B) then click the delete button

SECTION B : REMAINING PRTR POLLUTANTS

RELEASERS TO WATERS					Please enter all quantities in this section in KGs			
POLLUTANT		M/C/E	Method Used		QUANTITY			
No. Annex II	Name		Method Code	Designation or Description	Emission Point 1	T (Total) KG/Year	A (Accidental) KG/Year	F (Fugitive) KG/Year
					0.0	0.0	0.0	0.0

\* Select a row by double-clicking on the Pollutant Name (Column B) then click the delete button

SECTION C : REMAINING POLLUTANT EMISSIONS (as required in your Licence)

RELEASERS TO WATERS					Please enter all quantities in this section in KGs			
POLLUTANT		M/C/E	Method Used		QUANTITY			
Pollutant No.	Name		Method Code	Designation or Description	Emission Point 1	T (Total) KG/Year	A (Accidental) KG/Year	F (Fugitive) KG/Year
					0.0	0.0	0.0	0.0

\* Select a row by double-clicking on the Pollutant Name (Column B) then click the delete button

**4.3 RELEASES TO WASTEWATER OR SEWER**

[Link to previous years emissions data](#)

| PRTR# : W0175 | Facility Name : Athy Civic Amenity Centre | Filename : W0175\_2011.xls | Return Year

03/04/2012 16:20

**SECTION A : PRTR POLLUTANTS**

OFFSITE TRANSFER OF POLLUTANTS DESTINED FOR WASTE-WATER TREATMENT OR SEWER					Please enter all quantities in this section in KGs			
POLLUTANT		METHOD			QUANTITY			
No. Annex II	Name	M/C/E	Method Used		Emission Point 1	T (Total) KG/Year	A (Accidental) KG/Year	F (Fugitive) KG/Year
			Method Code	Designation or Description				
					0.0	0.0	0.0	0.0

\* Select a row by double-clicking on the Pollutant Name (Column B) then click the delete button

**SECTION B : REMAINING POLLUTANT EMISSIONS (as required in your Licence)**

OFFSITE TRANSFER OF POLLUTANTS DESTINED FOR WASTE-WATER TREATMENT OR SEWER					Please enter all quantities in this section in KGs			
POLLUTANT		METHOD			QUANTITY			
Pollutant No.	Name	M/C/E	Method Used		Emission Point 1	T (Total) KG/Year	A (Accidental) KG/Year	F (Fugitive) KG/Year
			Method Code	Designation or Description				
					0.0	0.0	0.0	0.0

\* Select a row by double-clicking on the Pollutant Name (Column B) then click the delete button

4.4 RELEASES TO LAND

[Link to previous years emissions data](#)

| PRTR# : W0175 | Facility Name : Athy Civic Amenity Centre | Filename : W0175\_2011.xls | Return Year : 2011 |

03/04/2012 16:21

SECTION A : PRTR POLLUTANTS

POLLUTANT		RELEASURES TO LAND			Please enter all quantities in this section in KGs		
No. Annex II	Name	M/C/E	METHOD		QUANTITY		
			Method Code	Designation or Description	Emission Point 1	T (Total) KG/Year	A (Accidental) KG/Year
					0.0	0.0	0.0

\* Select a row by double-clicking on the Pollutant Name (Column B) then click the delete button

SECTION B : REMAINING POLLUTANT EMISSIONS (as required in your Licence)

POLLUTANT		RELEASURES TO LAND			Please enter all quantities in this section in KGs		
Pollutant No.	Name	M/C/E	METHOD		QUANTITY		
			Method Code	Designation or Description	Emission Point 1	T (Total) KG/Year	A (Accidental) KG/Year
					0.0	0.0	0.0

\* Select a row by double-clicking on the Pollutant Name (Column B) then click the delete button

5. ONSITE TREATMENT & OFFSITE TRANSFERS OF WASTE

| PRTR# : W0175 | Facility Name : Athy Civic Amenity Centre | Filename : W0175\_2011.xls | Return Year : 2011 |

03/04/2012 16:21

Please enter all quantities on this sheet in Tonnes

7

Transfer Destination	European Waste Code	Hazardous	Quantity (Tonnes per Year)	Description of Waste	Waste Treatment Operation	Method Used		Location of Treatment	Haz Waste : Name and Licence/Permit No of Next Destination Facility	Haz Waste : Name and Licence/Permit No of Recover/Disposer	Haz Waste : Address of Next Destination Facility	Non Haz Waste : Address of Recover/Disposer	Name and License / Permit No. and Address of Final Recoverer / Disposer (HAZARDOUS WASTE ONLY)	Actual Address of Final Destination i.e. Final Recovery / Disposal Site (HAZARDOUS WASTE ONLY)
						M/C/E	Method Used		Non	Non Haz Waste : Address of Recover/Disposer				
Within the Country	20 03 01	No	264.0	mixed municipal waste	D1	C	Weighed	Offsite in Ireland	Silliot Hill IWMF,W0014-01		...,Kilcullen,Co Kildare,Ireland			
Within the Country	20 03 07	No	89.0	bulky waste	D1	C	Weighed	Offsite in Ireland	Silliot Hill IWMF,W0014-01		...,Kilcullen,Co Kildare,Ireland			
Within the Country	20 02 01	No	16.0	Green Waste	R3	C	Weighed	Offsite in Ireland	Silliot Hill IWMF,W0014-01		...,Kilcullen,Co Kildare,Ireland			
Within the Country	15 01 01	No	17.0	paper and cardboard packaging	R3	C	Weighed	Offsite in Ireland	Irish Packaging Recycling Ltd T/A Panda Waste,W0263-01		Rd,Walkinstown,Dublin 12,.,Ireland			
Within the Country	20 01 01	No	20.0	Newspapers & magazines	R3	C	Weighed	Offsite in Ireland	Irish Packaging Recycling Ltd T/A Panda Waste,W0263-01		Rd,Walkinstown,Dublin 12,.,Ireland			
Within the Country	15 01 07	No	15.0	glass packaging	R5	C	Weighed	Offsite in Ireland	Rehab Glassco,WCP DC 08-1150-01		Unit 4 Osberstown Business Pk,Caragh Rd,Naas,Co. Kildare,Ireland			
Within the Country	20 01 02	No	1.0	glass	R5	C	Weighed	Offsite in Ireland	Rehab Glassco,WCP DC 08-1150-01		Unit 4 Osberstown Business Pk,Caragh Rd,Naas,Co. Kildare,Ireland			
Within the Country	15 01 04	No	2.0	metallic packaging	R4	C	Weighed	Offsite in Ireland	Thomtons Recycling Centre,WCP DC 09-1190-01		Unit 52B Parkwest Business Pk,.,Dublin,D 12,Ireland			
Within the Country	20 01 40	No	17.0	metals	R4	C	Weighed	Offsite in Ireland	Thomtons Recycling Centre,WCP DC 09-1190-01		Unit 52B Parkwest Business Pk,.,Dublin,D 12,Ireland			
Within the Country	20 01 11	No	4.0	textiles	R5	C	Weighed	Offsite in Ireland	Textile Recycling,WPR 014/2		Glen Abbey Complex,Belgard Rd,Tallaght,Dublin 24,Ireland			
Within the Country	20 01 33	Yes	1.0	batteries and accumulators included in 16 06 01, 16 06 02 or 16 06 03 and unsorted batteries and accumulators containing these	R4	C	Weighed	Offsite in Ireland	Rilta Environmental,WCP DC 09-1192-01		402 Greenogue Business Pk,Rathcoole,Dublin,.,Ireland		The Recycling Village,WP 2007/20,Units 4 4A & 7 Tinure Business Pk,Tinure,Monasterboice,Lout h,Ireland	Units 4 4A & 7 Tinure Business Pk,Tinure,Monasterboice,Lout h,Ireland
Within the Country	13 02 04	Yes	1.0	mineral-based chlorinated engine, gear and lubricating oils discarded electrical and electronic equipment other than those mentioned in 20 01 21 and 20 01 23 containing hazardous	R9	C	Weighed	Offsite in Ireland	Enva Ireland,WCP DC 08-1116-01		Clonmainham Industrial Estate,Portlaoise,Laois,.,Irela nd		Enva Ireland,WCP DC 08-1116-01,Clonmainham Industrial Estate,Portlaoise,Laois,.,Irela nd	Clonmainham Industrial Estate,Portlaoise,Laois,.,Irela nd
Within the Country	20 01 35	Yes	58.0	components gypsum-based construction materials other than those mentioned in 17 08 01	R4	C	Weighed	Offsite in Ireland	Rehab Enterprises,WPR 033/2		Unit 77 ,Broomhill Rd,Tallaght,Dublin 24,Ireland		Est,Daingean Rd,Tullamore,Offaly,Ireland	Cappincur Ind Est,Daingean Rd,Tullamore,Offaly,Ireland
Within the Country	17 08 02	No	8.0	gypsum-based construction materials other than those mentioned in 17 08 01	R5	C	Weighed	Offsite in Ireland	Gypsum Recyling Ltd,.		Rathcoffey,Donadea,Naas,Co . Kildare,Ireland			
Within the Country	20 01 27	Yes	7.0	paint, inks, adhesives and resins containing dangerous substances	D9	C	Weighed	Offsite in Ireland	Indaver Ireland,W036/2		Tolka Quay Rd,Dublin Port,Dublin Rd,Dublin 1,Ireland		Indaver Ireland,W036/2,Tolka Quay Rd,Dublin Port,Dublin Rd,Dublin 1,Ireland	Tolka Quay Rd,Dublin Port,Dublin Rd,Dublin 1,Ireland

\* Select a row by double-clicking the Description of Waste then click the delete button

[Link to previous years waste data](#)

[Link to previous years waste summary data & percentage change](#)