



*Site: Ballymount Road, Walkinstown, Dublin 12.*

*Waste Licence Number W0263-01*

## *Annual Environmental Report*

*26<sup>th</sup> January 2011 – 31<sup>st</sup> December 2011*

**Table of Contents**

Table of Contents ..... 2

1.0 Introduction..... 4

    1.1 Company details..... 4

    1.2 Management Structure ..... 5

    1.3 Financial Provision ..... 5

    1.4 Environmental Policy..... 5

    1.5 Activities ..... 6

    1.6 Waste Activities carried out at the Facility ..... 6

    1.7 Water Usage:..... 7

2.0 Summary Information ..... 7

    2.1 Waste Received..... 7

    2.2 Waste Transferred Off-Site for Disposal or Recovery ..... 8

    2.3 Waste Recovery Reports..... **Error! Bookmark not defined.**

    2.4 Summary report on emissions and interpretation of environmental monitoring ..... 8

        2.4.1 *Surface Water*..... 8

        2.4.2 *Dust Emissions*..... 8

        2.4.3 *Noise Emissions* ..... 10

        2.4.4 *Trade Effluent* ..... **Error! Bookmark not defined.**

        2.4.5 *Bund, pipe and underground storage tanks integrity* ..... 10

        2.4.6 *Summary of resource and energy consumption* ..... 11

    2.5 Site infrastructure..... 11

        2.5.1 *In-place* ..... 11

        2.5.2 *Planned Infra-structure* ..... **Error! Bookmark not defined.**

    2.6 Progress Report on Proposals Developed to Minimise Water Demand & Trade Effluent Discharge ..... 12

    2.7 PRTR Emission..... 12

3.0 Environmental objectives and targets – 2011 ..... 13

    3.1 Summary of reported incidents and complaints..... 15

        3.1.1 *Reported Incidents Summary* ..... 15

        3.1.2 *Complaints:* ..... 15

    3.2 Review of nuisance controls ..... 15

        3.2.1 *Odour* ..... 15

---

3.2.2 <i>Noise</i> .....	15
3.2.3 <i>Dust</i> .....	15
3.2.4 <i>Vermin</i> .....	15
3.2.5 <i>Flies</i> .....	16
3.2.6 <i>Birds</i> .....	16
3.2.7 <i>Litter</i> .....	16
4.0 Development of Procedures on Site.....	16
5.0 Pollution Emission Register.....	17
6.0 Report on Programme for Public Information .....	17
7.0 Appendices.....	18

## **1.0 Introduction**

Panda were granted the EPA Waste Licence W0263-01 on the 26<sup>th</sup> January 2011. This replaces the Waste Permit WPR 021/2 issued by South Dublin County Council. Under this licence, Panda will be able to process initially 150,000 tonnes per annum. Appendix A illustrates the current site layout.

### 1.1 Company details

Licence No: W0263-01

Name: Irish Packaging Recycling Ltd

Address: Ballymount Road,  
Walkinstown,  
Dublin 12.

Telephone Number: 01 4602011

Fax Number: 01 4602210

Website: [www.panda.ie](http://www.panda.ie)

## 1.2 Management Structure

There are 30 employees either working directly or indirectly at the facility. Appendix B illustrates the organisational structure of the facility.

## 1.3 Financial Provision

A statement from our accountants is provided in Appendix C. At the present time the annual turnover and company assets are sufficient to offset environmental liabilities incurred during the course of operations and in the event that the company is closed.

## 1.4 Environmental Policy

In carrying out our function, IPR/Panda acknowledge that our activities impact upon the environment both through routine internal operations and the actions of our staff.

It is Panda's policy to protect the environment during all activities, both on and off-site.

This is achieved by:

- Strategic preparation and implementation of operating procedures (including an emergency response procedure).
- Utilizing BAT (Best Available Technology).
- Actively promoting environmental awareness amongst staff and clients through appropriate training and communication programs.
- Reduce energy use through effective education and awareness and the installation of energy efficient technology where appropriate.
- Implementing a policy of continuous improvement, by means of targeted objectives. All objectives and targets are monitored and up-dated accordingly.

IPR/Panda are committed to complying with all relevant environmental regulations and aim to supply a safe competitive and sustainable service with specific regards to the surrounding environment.

## 1.5 Activities

Under the waste licence W0263-01, IPR conducts the following activities:

***Licensed Waste Recovery Activities, in accordance with the Fourth Schedule of the Waste Management Acts, 1996 to 2010***

**Class 2.**

Recycling or reclamation of organic substances which are not used as solvents (including composting and other biological processes) (P).

**Class 3.**

Recycling or reclamation of metals and metal compounds.

**Class 4.**

Recycling or reclamation of other inorganic materials.

**Class 13.**

Storage of waste intended for submission to any activity referred to in a preceding paragraph of this Schedule, other than temporary storage, pending collection, on the premises where such waste is produced.

IPR accept material from commercial and industrial sectors throughout Ireland. The normal facility operating hours are 6am-5pm (Monday-Friday) & 6am-2pm (Saturdays). The facility is licensed to accept non-hazardous wastes only.

## 1.6 Waste Activities carried out at the Facility

Material accepted and dispatched at the facility is weighed using Genesys weighbridge software. The facility is used as a baling station. The facility accepts predominantly source segregated paper, cardboard, plastic and hangers. No hazardous waste, putrescible waste or liquid wastes are accepted at the facility.

The material is initially sorted in the facility using skid steers and teleporters, then loaded into one of three balers for baling. The resultant bales are stored for onward movement.

---

There is a dual weighbridge for incoming and outgoing material.

### 1.7 Water Usage:

Water for dust suppression and fire fighting is taken from a holding tank located on a neighbouring paper premises. Water to the office and amenities is taken from municipal supply and is metered by the council.

Water usage in the facility consists of:

- Dust Suppression.
- Fire fighting

## 2.0 Summary Information

### 2.1 Waste Received

The waste received at the facility from the 26<sup>th</sup> January 2011 to the 31<sup>st</sup> December 2011 was 108,684.41 tonnes.

**Table 1.** Waste received in 2011

<b>EWC Code</b>	<b>Waste Description</b>	<b>Tonnage</b>
20 01 01	Paper and Cardboard	27,023.03
20 01 39	Plastic	549.53
15 01 01	Paper and Cardboard	73,132.29
15 01 02	Plastic Packaging	6,066.22
15 01 03	Wood	1,215.78
15 01 04	Steel	155.47
16 01 03	Used Tyres	542.08

---

## 2.2 Waste Transferred Off-Site for Disposal or Recovery

See Appendix D (PRTR) for the breakdown of the different destinations used for the waste removed off site by EWC Code.

**Table 2:** Outgoing destination and recovery rate.

Destination	Tonnage	%
Disposal	0	0
Recovery	110117.39	100

## 2.4 Summary report on emissions and interpretation of environmental monitoring

Under Schedule C of the licence W0263-01, IPR are required to monitor storm water emissions, noise and ambient air monitoring (Dust). The following sub-headings detail the results from independent laboratories of the different parameters and the emission limit values ELV's set by the EPA and any complaints and incident that may have occurred during the year.

### 2.4.1 Surface Water

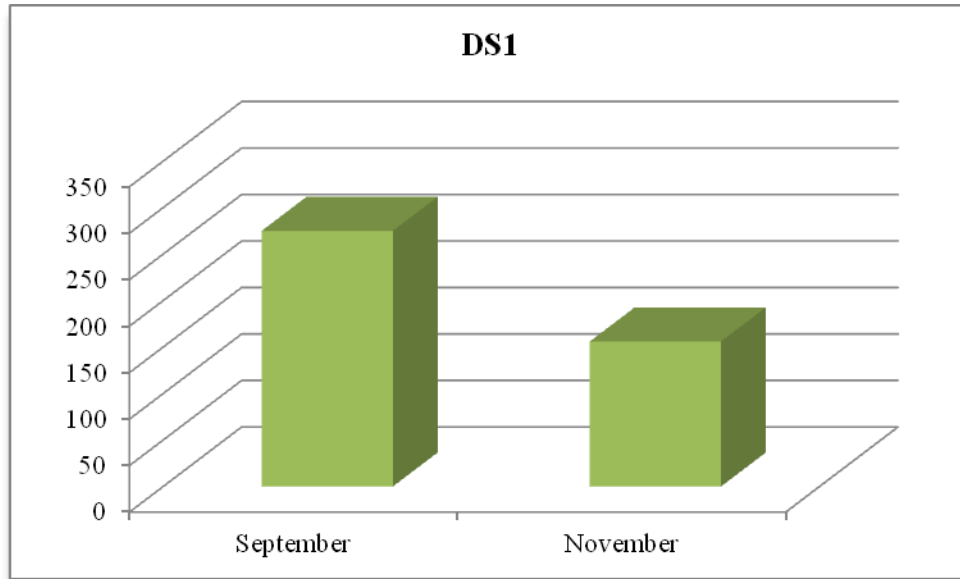
Storm water passes through a silt trap prior to being discharged to the stream to the South of the facility.

### 2.4.2 Dust Emissions

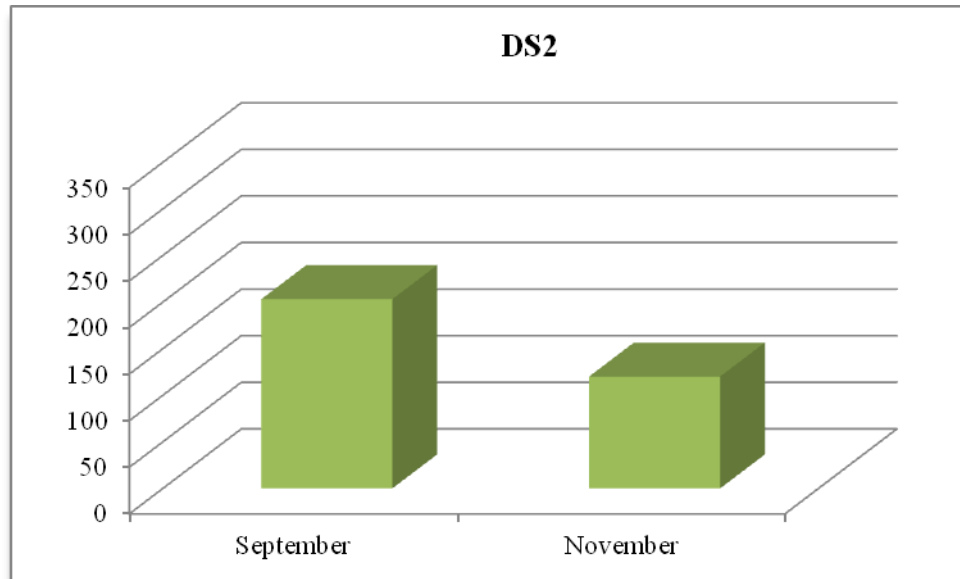
As per schedule B5 for dust deposition limits, there are currently three sampling locations (AD1, AD2 and AD3). Monitoring is required annually on site. Figs 1-3 illustrate dust recordings for 2011.



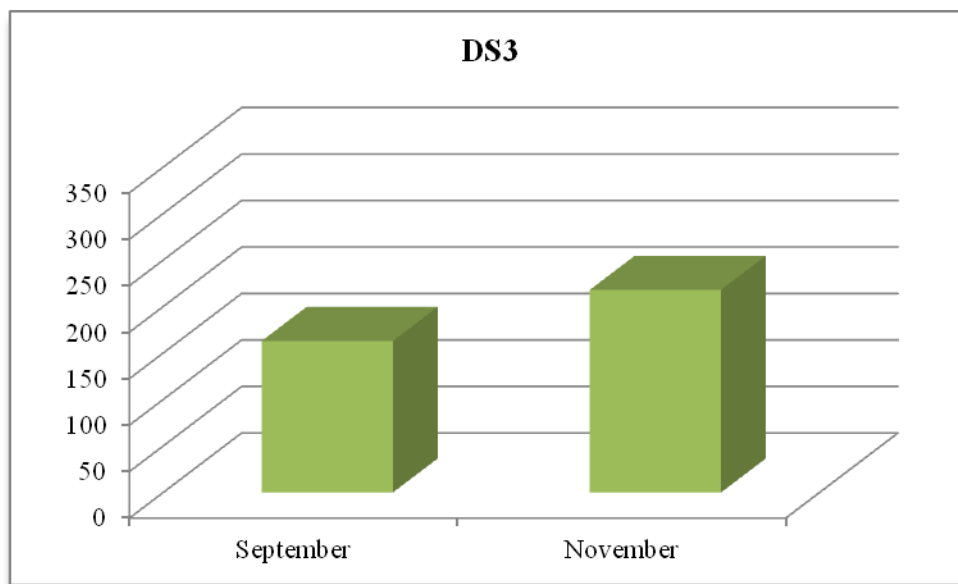
**Fig. 1:** Dust emission results for DS1 (AD1) in  $\text{mg m}^{-2} \text{d}^{-1}$



**Fig. 2:** Dust emission results for DS2 (AD2) in  $\text{mg m}^{-2} \text{d}^{-1}$



**Fig. 3:** Dust emission results for DS3 (AD3) in  $\text{mg m}^{-2} \text{d}^{-1}$



As per Schedule B.5, the dust deposition limit for the site is  $350 \text{ mg m}^{-2} \text{d}^{-1}$ . AD1, AD2 and AD3 are well within licenced ELV's.

**2.4.3 Noise Emissions**

Noise emissions are monitored according to Schedule B.4 and the emission limit values (ELV) set out in Schedule C.5 of the licence. An independent competent consultant was commissioned to conduct the noise sampling for the facility. Table 3 details results of noise monitoring conducted in 2011.

**Table 3.** Noise emissions 2011

Location	Date	Time	Leq	L10	L90	Comments
AN1	23 <sup>rd</sup> Dec'11	10.20	52.1	54.5	50.6	In periods of low activity road traffic was audible at 51/52 dBA
AN2	23 <sup>rd</sup> Dec'11	10.30	54.8	57.5	52.8	Mainly noise from bobcat activity and trucks entering and leaving the site

---

#### 2.4.5 Bund, pipe and underground storage tanks integrity

The integrity and water tightness of all underground pipes, all tanks, bunding structures and containers and their resistance to penetration by water and other materials is required to be carried out every three years and thereafter and reported to the Agency. A bund, pipeline and UST integrity testing is scheduled for Q3 of 2012.

#### 2.4.6 Summary of resource and energy consumption

**Table 4:** Summary of Energy Consumption from 26<sup>th</sup> January 2011 to December 2011.

Resource	Quantity
Gas Oil	86,503.50 Litres
Electricity	609,783.56 Units

#### 2.4.6.3 Water

Water is obtained from a shared holding tank and water for the office and amenities is obtained from the municipal waster supply.

### 2.5 Site infrastructure

The following are details on infrastructure in the facility.

#### 2.5.1 In-place

The current site infrastructure is outlined below (List 1). List 2 details the waste processing equipment used on site.

**List 1:** Current site infrastructure

1. Offices
2. Dual Weighbridge.
3. One x Waste processing building
4. One sprinkling system
5. Canteen & toilets.
6. Fuel Depot

## 10. Fencing around the site

### **List 2:** Waste processing equipment

1 x Skid Steer

7 x Forklifts

1 x Roadsweeper

2 x Teleporters

There is sufficient back up within the group if the skid steers, forklifts or the teleporter's break down.

### 2.6 Progress report on proposals developed to minimise water demand

Water usage is minimised on site due to the nature of the materials handled. Therefore there is no requirement to reduce water usage.

### 2.7 PRTR Emission.

IPR's PRTR emission return is provided in Appendix E.

**3.0 Environmental objectives and targets – 2012.**

No	Objective & Target	Method of Achievement	Responsibility	Timescale	Complete in 2011
1	<b>Assess the Effectiveness of Nuisance Control Procedures</b>	Continually review and assess all nuisance control procedures to ensure minimal impact on surrounding area	Facility Manager	Ongoing	Continuous
		Ensure yards are cleaned at the end of each working day	Operatives	Ongoing	Continuous
2	<b>Prevent Water Pollution from Run-Off</b>	Complete a Firewater Risk Assessment	Facility Manager/ Env Dept	June 2012	Complete
		Ensure all gullies are maintained and regularly cleaned	Facility Manager/ Operatives	Ongoing	Continuous
		Install Class I full retention separator	Facility Manager	July 2012	
		Ensure that levels in trade effluent tanks are maintained at an appropriate height	Facility Manager/Operatives	On-going	Continuous
3	<b>Assess &amp; Review Resource &amp; Energy Consumption at the site</b>	Carry out an energy audit on the site	Facility Manager	Jan' 2012	Complete
4	<b>Maintain and Develop the Environmental Management System</b>	Maintain EMS Documentation on site	Facility Manager/ Env Dept	Continuous	Continuous
		Up date procedures to reflect operational and control changes	Facility Manager/ Env Dept	Continuous	Continuous
5	<b>Assess Waste Acceptance Procedures so as to minimise volume of erratics</b>	Communicate with customers about the items that are not acceptable in the in-coming wastes	Facility Manager/ Sales Reps	Continuous	Continuous
6	<b>Environmental Monitoring</b>	Implement the Environmental Monitoring Programme specified in the Waste Licence	Facility Manager	Continuous	Continuous
		Investigate any accidents of emission limit values	Facility Manager	Continuous	Continuous
7	<b>Ensure and implement a training programme</b>	Identify staff training requirements and provide relevant training	Facility Manager/ Env Dept	Continuous	Continuous

8	<b>To control any emergencies that may arise at the facility</b>	Establish and implement an Emergency Response Procedure	Facility Manager/ Env Dept	May 2011	Complete
9	<b>Prepare a Standard Operating Procedures Manual</b>	Update the SOP manual relevant to site operations	Facility Manager/ Env Dept	Continuous	Continuous
10	<b>Ensure lighting in waste handling buildings provide sufficient lighting so as to assess incoming waste</b>	Clean all light fittings in waste handling buildings	Environmental Manager/ Yard Supervisor	July 2012	Complete
13	<b>Office Recycling</b>	Implement office recycling	Office Manager/ Environmental Department	Continuous	Continuous
		Continuation of training regarding office recycling	Office Manager/ Environmental Department	Continuous	Continuous

### 3.1 Summary of reported incidents and complaints

#### *3.1.1 Reported Incidents Summary*

There were no incidents in 2011.

#### *3.1.2 Complaints:*

No incidents occurred during this licence in 2011.

### 3.2 Review of nuisance controls

#### *3.2.1 Odour*

There is minimal risk of odour nuisance due to the nature of the waste accepted at the facility. However, IPR's in house roadsweeper cleans the concreted yard routinely throughout the day.

#### *3.2.2 Noise*

The monitoring results showed that noise is not a nuisance, as only bobcats, teleporters and forklifts are operational on site.

#### *3.2.3 Dust*

A dust suppression system is installed in the shed and on the external (South-western side) of the building. The roadsweeper is frequently used on all concreted yards. Fire hoses are also available to spray water on concreted yards as required.

#### *3.2.4 Vermin*

A file on vermin control is maintained in the office. A sub-contractor is used to control any vermin on site.

### *3.2.5 Flies*

Good housekeeping practices are used to prevent fly infestations. The yard is kept clean using a road sweeper and all waste for disposal is removed from the facility within 48 hours, or 72 hours in the case of a bank holiday weekends.

### *3.2.6 Birds*

In order to avoid having birds as a nuisance, litter control is practised at all times, this includes regular litter patrols. Birds are not attracted, due to the nature of the material handled on site.

### *3.2.7 Litter*

A designated member of staff carries out litter inspections of the facility regularly and gathers any litter deposited. The yard is kept clean using a road sweeper

## **4.0 Development of Procedures on Site**

The Environmental Management System has been developed and includes the following Standard Operating Procedure;

- Corrective Action;
- Daily Site Inspections;
- Nuisance Management;
- Emergency Response;
- Unacceptable Waste;
- Communications Programme;
- Storage of Fuels and Oils;
- Training and Awareness;
- Environmental Complaints;



---

A Daily Site Inspection Sheet has been developed to record any potential nuisance on or points to note including a map of the facility for reference as to the location of the nuisance.

### **5.0 Pollution Emission Register**

After consulting the PERL list IPR are not using any substance that is listed at present.

### **6.0 Report on Programme for Public Information**

IPR have a shared website with their sister company Panda. The website was recently re-developed; one of the features is an Environmental page where the following can be downloaded,

- Facility licences (W0140-03, W0261-01, **W0263-01**)
- Multi-regional Waste collection permit (WCP-DC-09-1188-01),
- Environmental Policy,

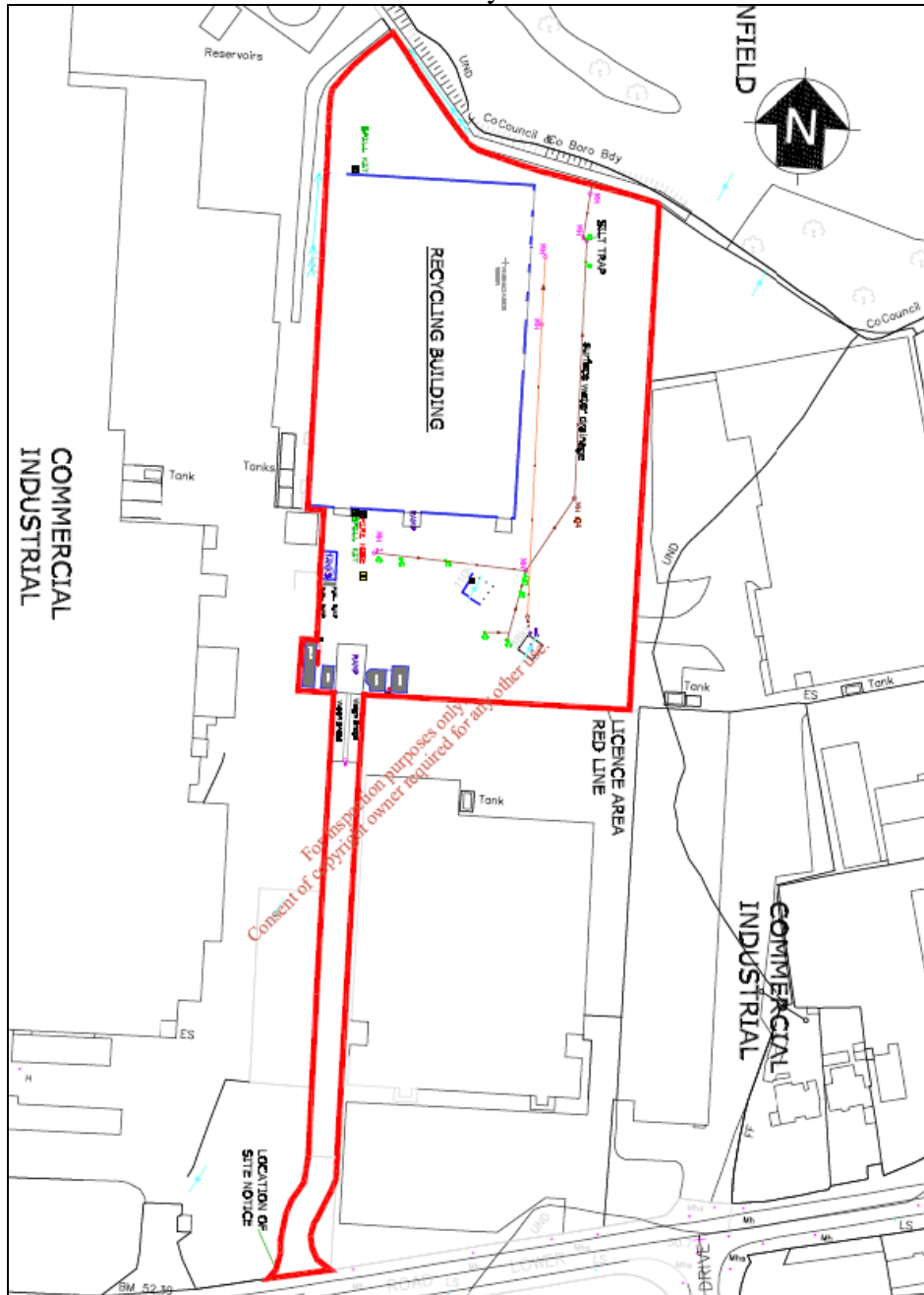
Recycling certificates are issued to customers, on request, so that they can determine their recycling on a monthly basis.

During the reporting period there were no requests from members of the public to inspect any Environmental Records.

The information in the Annual Environmental Report is true and accurate representation of the activities conducted by IPR in 2011.

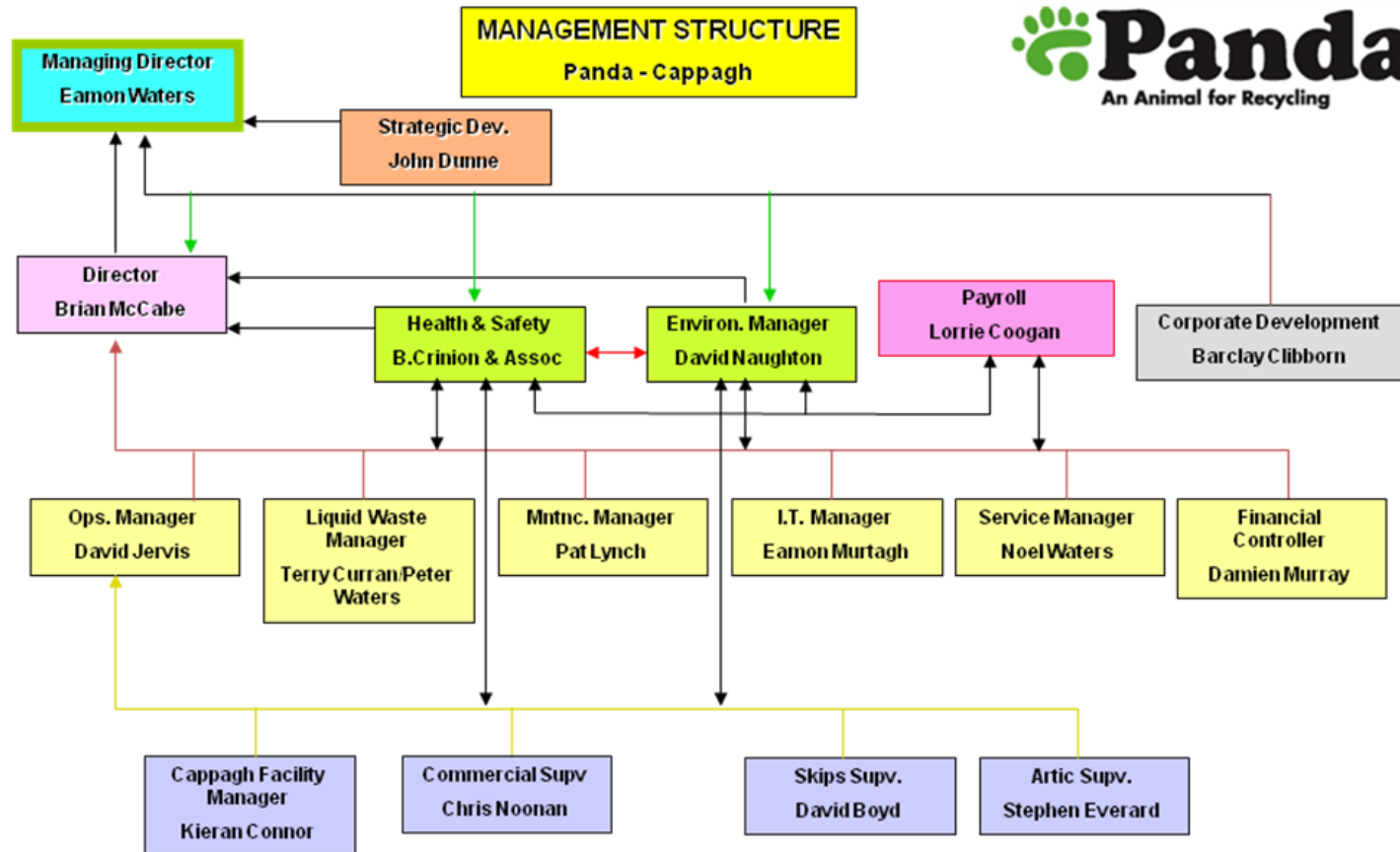
# Appendix A

Site Layout




# Appendix B

## Organisational Structure



# Appendix C

## Financial Statement



**Fagan Lynch Donnellan**  
Chartered Accountants & Registered Auditors

Our Ref: VL/NMcK/SS

15<sup>th</sup> March 2012

Environmental Protection Agency,  
McCumiskey House,  
Richview,  
Clonskeagh Road,  
Dublin 14.

**Re: Irish Packaging Recycling Ltd.**

Dear Sir,


We act as Auditors and Taxation Agents for the above and have acted in this capacity for the past 5 years.

We wish to confirm as follows:


1. Statutory Accounts have been filed for all years up to 31.12.2010 with the Companies Office.  
  
Accounts and Tax Returns have also been filed with Inspector of Taxes for all years to 31st December 2010.
2. The company trades profitably and is on a very sound financial footing.

If you have any queries, please do not hesitate to contact us.

Yours faithfully,


  
FAGAN LYNCH DONNELLAN

Newbridge House, Athlone, Navan, Co. Meath  
Tel: (046) 9033700 Fax: (046) 9029341 e-mail: info@fld.ie www.fld.ie  
John Fagan FCA Vincent Lynch FCA Mark McCartney FCCA  
Registered to carry on audit work and authorised to carry on investment business by the Institute of Chartered Accountants in Ireland (ICAI).  
Chartered Accountants Ireland is the operating name of ICAI.



# Appendix D

## PRTR Emissions

		IPRTR#: W0263   Facility Name: Irish Packaging Recycling Limited   Filename: PRTR W0263_2011(1).xls   Return Year: 2011	
		<a href="#">Guidance to completing the PRTR workbook</a> <b>AER Returns Workbook</b> <small>Version 1.1.13</small>	
<b>REFERENCE YEAR</b>		2011	
<b>1. FACILITY IDENTIFICATION</b>			
Parent Company Name	Irish Packaging Recycling Limited		
Facility Name	Irish Packaging Recycling Limited		
PRTR Identification Number	W0263		
Licence Number	W0263-01		
Waste or IPPC Classes of Activity	N class_name 4.2 Recycling or reclamation of organic substances which are not used as solvents (including composting and other biological transformation processes).		
Address 1	Ballymount Road		
Address 2	Walkinstown		
Address 3	Dublin 12		
Address 4			
	Dublin		
Country	Ireland		
Coordinates of Location	-6.34193 53.31824		
River Basin District	IEEA		
NACE Code	3832		
Main Economic Activity	Recovery of sorted materials		
<b>AER Returns Contact Name</b>	David Naughton		
<b>AER Returns Contact Email Address</b>	david.naughton@panda.ie		
<b>AER Returns Contact Position</b>	Environmental Manager		
<b>AER Returns Contact Telephone Number</b>	1850 65 65 65		
<b>Returns Contact Mobile Phone Number</b>			
<b>AER Returns Contact Fax Number</b>	046 9024189		
<b>Production Volume</b>	0.0		
<b>Production Volume Units</b>			
<b>Number of Installations</b>	0		
<b>Number of Operating Hours in Year</b>	0		
<b>Number of Employees</b>	0		
<b>User Feedback/Comments</b>			
<b>Web Address</b>			
<b>2. PRTR CLASS ACTIVITIES</b>			
<b>Activity Number</b>	50.1		
<b>Activity Name</b>	General		
<b>3. SOLVENTS REGULATIONS (S.I. No. 543 of 2002)</b>			
Is it applicable?	No		
Have you been granted an exemption?	No		
If applicable which activity class applies (as per Schedule 2 of the regulations)?			
Is the reduction scheme compliance route being used?			

RELEASERS TO AIR		Please enter all quantities in this section in KGs				
POLLUTANT		ADD EMISSION POINT	QUANTITY			
No. Annex II	Name	Emission Point 1	T (Total) KG/Year	A (Accidental) KG/Year	F (Fugitive) KG/Year	
		0.0	0.0	0.0	0.0	
<input type="button" value="ADD NEW ROW"/> <input type="button" value="DELETE ROW"/> * Select a row by double-clicking on the Pollutant Name (Column B) then click the delete button.						
<b>SECTION B : REMAINING PRTR POLLUTANTS</b>						
RELEASERS TO AIR		Please enter all quantities in this section in KGs				
POLLUTANT		ADD EMISSION POINT	QUANTITY			
No. Annex II	Name	Emission Point 1	T (Total) KG/Year	A (Accidental) KG/Year	F (Fugitive) KG/Year	
		0.0	0.0	0.0	0.0	
<input type="button" value="ADD NEW ROW"/> <input type="button" value="DELETE ROW"/> * Select a row by double-clicking on the Pollutant Name (Column B) then click the delete button.						
<b>SECTION C : REMAINING POLLUTANT EMISSIONS (As required in your Licence)</b>						
RELEASERS TO AIR		Please enter all quantities in this section in KGs				
POLLUTANT		ADD EMISSION POINT	QUANTITY			
Pollutant No.	Name	DS1	DS2	DS3	T (Total) KG/Year	F (Fugitive) KG/Year
210	Dust	Emission Point 1 0.08	Emission Point 2 0.06	Emission Point 3 0.07	0.21	0.0
<input type="button" value="ADD NEW ROW"/> <input type="button" value="DELETE ROW"/> * Select a row by double-clicking on the Pollutant Name (Column B) then click the delete button.						
<b>Additional Data Requested from Landfill operators</b>						
<p>For the purposes of the National Inventory on Greenhouse Gases, landfill operators are requested to provide summary data on landfill gas (Methane) flared or utilised on their facilities to accompany the figures for total methane generated. Operators should only report their Net methane (CH4) emissions to the environment under T (total) KG/yr for Section A: Sector specific PRTR pollutants above. Please complete the table below:</p>						
<b>Landfill:</b> Please enter summary data on the quantities of methane flared and / or utilised		Irish Packaging Recycling Limited				
		<b>T (Total) kg/Year</b>		<b>Facility Total Capacity m3 per hour</b>		
Total estimated methane generation (as per site model)	0.0	N/A				
Methane flared	0.0	0.0		(Total Flaring Capacity)		
Methane utilised in engines	0.0	0.0		(Total Utilising Capacity)		
Net methane emission (as reported in Section A above)	0.0	N/A				

<b>4.2 RELEASES TO WATERS</b> <a href="#">Link to previous years emissions data</a>		IPRR#: W02631 Facility Name: Irish Packaging Recycling Limited I File name: PRTR W0263_2011(1).xls I Return Year: 2011		28/03/2012 09:26				
<b>SECTION A : SECTOR SPECIFIC PRTR POLLUTANTS</b>		Data on ambient monitoring of storm/surface water or groundwater, conducted as part of your licence requirements, should NOT be submitted under this section.						
<b>RELEASES TO WATERS</b>		<b>Please enter all quantities in this section in KGs</b>						
<b>POLLUTANT</b>		<b>METHOD</b>		<b>ADD EMISSION POINT</b>		<b>QUANTITY</b>		
No. Annex II	Name	M/C/E	Method Code	Designation or Description	Emission Point 1	T (Total) KG/Year	A (Accidental) KG/Year	F (Fugitive) KG/Year
					0.0	0.0	0.0	0.0
ADD NEW ROW   DELETE ROW *		* Select a row by double-clicking on the Pollutant Name (Column B) then click the delete button.						
<b>SECTION B : REMAINING PRTR POLLUTANTS</b>		<b>RELEASES TO WATERS</b>		<b>Please enter all quantities in this section in KGs</b>				
<b>POLLUTANT</b>		<b>METHOD</b>		<b>ADD EMISSION POINT</b>		<b>QUANTITY</b>		
No. Annex II	Name	M/C/E	Method Code	Designation or Description	Emission Point 1	T (Total) KG/Year	A (Accidental) KG/Year	F (Fugitive) KG/Year
					0.0	0.0	0.0	0.0
ADD NEW ROW   DELETE ROW *		* Select a row by double-clicking on the Pollutant Name (Column B) then click the delete button.						
<b>SECTION C : REMAINING POLLUTANT EMISSIONS (as required in your Licence)</b>		<b>RELEASES TO WATERS</b>		<b>Please enter all quantities in this section in KGs</b>				
<b>POLLUTANT</b>		<b>METHOD</b>		<b>ADD EMISSION POINT</b>		<b>QUANTITY</b>		
Pollutant No.	Name	M/C/E	Method Code	Designation or Description	Emission Point 1	T (Total) KG/Year	A (Accidental) KG/Year	F (Fugitive) KG/Year
					0.0	0.0	0.0	0.0

<b>4.3 RELEASES TO WASTEWATER OR SEWER</b> <a href="#">Link to previous years emissions data</a>		IPRR#: W02631 Facility Name: Irish Packaging Recycling Limited I File name: PRTR W0263_2011(1).xls I Return Year: 2011		28/03/2012 09:26				
<b>SECTION A : PRTR POLLUTANTS</b>		<b>OFFSITE TRANSFER OF POLLUTANTS DESTINED FOR WASTE-WATER TREATMENT OR SEWER</b>						
<b>POLLUTANT</b>		<b>METHOD</b>		<b>ADD EMISSION POINT</b>		<b>QUANTITY</b>		
No. Annex II	Name	M/C/E	Method Code	Designation or Description	Emission Point 1	T (Total) KG/Year	A (Accidental) KG/Year	F (Fugitive) KG/Year
					0.0	0.0	0.0	0.0
ADD NEW ROW   DELETE ROW *		* Select a row by double-clicking on the Pollutant Name (Column B) then click the delete button.						
<b>SECTION B : REMAINING POLLUTANT EMISSIONS (as required in your Licence)</b>		<b>OFFSITE TRANSFER OF POLLUTANTS DESTINED FOR WASTE-WATER TREATMENT OR SEWER</b>		<b>Please enter all quantities in this section in KGs</b>				
<b>POLLUTANT</b>		<b>METHOD</b>		<b>ADD EMISSION POINT</b>		<b>QUANTITY</b>		
Pollutant No.	Name	M/C/E	Method Code	Designation or Description	Emission Point 1	T (Total) KG/Year	A (Accidental) KG/Year	F (Fugitive) KG/Year
					0.0	0.0	0.0	0.0

<b>4.4 RELEASES TO LAND</b> <a href="#">Link to previous years emissions data</a>		IPRTR#: W02611 Facility Name: Panda Waste   Filename: PRTR W0261-012010.xls   Return Year: 2010		29/03/2011 14:47	
<b>SECTION A : PRTR POLLUTANTS</b>					
<b>RELEASES TO LAND</b>					
<b>Please enter all quantities in this section in KGs</b>					
<b>POLLUTANT</b>		<b>METHOD</b>		<b>ADD EMISSION POINT</b>	
No. Annex II      Name		M/C/E      Method Used		Emission Point 1      T (Total) KG/Year      A (Accidental) KG/Year	
		Method Code      Designation or Description			
				0.0      0.0      0.0	
<input type="button" value="ADD NEW ROW"/> <input type="button" value="DELETE ROW"/> *		* Select a row by double-clicking on the Pollutant Name (Column B) then click the delete button			
<b>SECTION B : REMAINING POLLUTANT EMISSIONS (as required in your Licence)</b>					
<b>RELEASES TO LAND</b>					
<b>Please enter all quantities in this section in KGs</b>					
<b>POLLUTANT</b>		<b>METHOD</b>		<b>ADD EMISSION POINT</b>	
Pollutant No.      Name		M/C/E      Method Used		Emission Point 1      T (Total) KG/Year      A (Accidental) KG/Year	
		Method Code      Designation or Description			
				0.0      0.0      0.0	
<input type="button" value="ADD NEW ROW"/> <input type="button" value="DELETE ROW"/> *		* Select a row by double-clicking on the Pollutant Name (Column B) then click the delete button			
<input type="button" value="PRINT THIS SHEET"/>					
<input type="button" value="HELP"/>					



5. ONSITE TREATMENT & OFFSITE TRANSFERS OF WASTE (PRTR/W020) Facility Name: Irish Packaging Recycling Limited File Name: PRTR/W020_2011.xls Report Year: 2011												
Please enter all quantities on this sheet in Tonnes												
Transfer Destination	European Waste Code	Hazardous	Quantity (Tonnes per Year)	Description of Waste	Waste Treatment Operation	Method Used		Location of Treatment	Name of Waste: Name and Licence/Permit No of Final Destination Facility Name of Waste: Name and Licence/Permit No of Responder/Disposer	Name of Waste: Address of Final Destination Facility Name of Waste: Address of Responder/Disposer	Name and Licence / Permit No. and Address of Final Responder / Disposer (HAZARDOUS WASTE ONLY)	Actual Address of Final Destination i.e. Final Responder / Disposal Site (HAZARDOUS WASTE ONLY)
						M/C/E	Method Used					
To Other Countries	15 01 01	No	288.68	paper and cardboard packaging	R13	M	Weighted	Offsite in Ireland	Aqnaill Ltd,Broker	88 Cherrywood Crescent,Clondalkin,Dublin 22,,Ireland		
To Other Countries	15 01 02	No	118.94	plastic packaging	R13	M	Weighted	Offsite in Ireland	Aqnaill Ltd,Broker	88 Cherrywood Crescent,Clondalkin,Dublin 22,,Ireland		
Within the Country	15 01 03	No	7.46	wooden packaging	R13	M	Weighted	Offsite in Ireland	Aqnaill Ltd,Broker	88 Cherrywood Crescent,Clondalkin,Dublin 22,,Ireland		
To Other Countries	16 01 03	No	185.78	end-of-life tyres	R13	M	Weighted	Offsite in Ireland	Aqnaill Ltd,Broker	88 Cherrywood Crescent,Clondalkin,Dublin 22,,Ireland		
To Other Countries	20 01 01	No	832.24	paper and cardboard	R13	M	Weighted	Offsite in Ireland	Aqnaill Ltd,Broker	88 Cherrywood Crescent,Clondalkin,Dublin 22,,Ireland		
Within the Country	20 01 01	No	4.24	paper and cardboard	R13	M	Weighted	Offsite in Ireland	Allied Waste Management,Broker	Clonmellon Industrial Estate,Clonmellon,Navan,Co. Meath,Ireland		
Within the Country	15 01 01	No	3.82	paper and cardboard packaging	R13	M	Weighted	Offsite in Ireland	Alma Packaging,N/A	280 Bannow Road,Cabra,Dublin 7,,Ireland		
<b>To Other Count</b>	<b>15 01 02</b>	<b>No</b>	<b>48.06</b>	<b>plastic packaging</b>	<b>R13</b>	<b>M</b>	<b>Weighted</b>	<b>Offsite in Ireland</b>	<b>Alternative Waste Solutions Ltd,Broker</b>	<b>Unit 2 Brittanis Business Park,Point Pleasant Ind Est,Wallsend Tyne and Wear,NE28 6HA,United Kingdom</b>		
To Other Countries	20 01 01	No	1573.34	paper and cardboard	R13	M	Weighted	Offsite in Ireland	Ashley Waste Sales Ltd,Broker	Underwood House,Ashley,Atrincham Cheshire,,United Kingdom		
To Other Countries	15 01 02	No	127.44	plastic packaging	R13	M	Weighted	Offsite in Ireland	Asia Global Trade,Broker	Suite 5,30 Lancaster Gate,London,W2		
Within the Country	20 01 01	No	194.4	paper and cardboard	R13	M	Weighted	Offsite in Ireland	Bailey Waste,WFP-FG-08-0001-01	Ballycooling,Finglas,Dublin 11,,Ireland		
Within the Country	15 01 03	No	13.86	wooden packaging	R13	M	Weighted	Offsite in Ireland	Brendan Durkin,Broker	Unit 9 Springfield Road,Carnbane Industrial Estate,Newry Co. Down,BT35 6EF,Ireland		
To Other Countries	20 01 01	No	1.36	paper and cardboard	R13	M	Weighted	Offsite in Ireland	CWS,Broker	135 Bessbrook Road,Mount Norris,Co. Armagh,BT6 02UB,Ireland		
To Other Countries	20 01 01	No	277.44	paper and cardboard	R13	M	Weighted	Offsite in Ireland	Cellmark Recycling,Broker	Heuvol,Geldrop 5664 HK,The Netherlands,,Netherlands		
To Other Countries	20 01 01	No	22.38	paper and cardboard	R13	M	Weighted	Offsite in Ireland	Cellmark,Broker	200,Corte Madera,California 94325,United States		
To Other Countries	15 01 01	No	2511.92	paper and cardboard packaging	R13	M	Weighted	Offsite in Ireland	Cellmark,Broker	200,Corte Madera,California 94325,United States		
To Other Countries	20 01 33	No	84.44	plastics	R13	M	Weighted	Offsite in Ireland	Choice Waste Management,Broker	Unit D Stratton Business Park,Montgomery Way,Biggleswade Bedfordshire,SG18 80B,United Kingdom		
To Other Countries	20 01 01	No	25.64	paper and cardboard	R13	M	Weighted	Offsite in Ireland	Choice Waste Management,Broker	Unit D Stratton Business Park,Montgomery Way,Biggleswade Bedfordshire,SG18 80B,United Kingdom		
Within the Country	15 01 03	No	977.48	wooden packaging	R13	M	Weighted	Offsite in Ireland	Conroy Recycling,W/P-04/2002	Kildallon,Mullingar,Co. Westmeath,,Ireland		

To Other Countries	15 01 01	No	2535.51	paper and cardboard packaging	R13	M	Weighted	Offsite in Ireland	Donngwan Hsing Chong Jinzhou Paper Co Ltd,Broker	Huangchong Village,Zhongtang Town,Donngwan City,Guangdong,China
Within the Country	15 01 02	No	19.98	plastic packaging	R13	M	Weighted	Offsite in Ireland	Envirogreen Recycling,Broker	4 Washing Bay Road,Coslisland,Co. Tyrone,BT71 4ND,United Kingdom
Within the Country	20 01 01	No	115.3	paper and cardboard	R13	M	Weighted	Offsite in Ireland	Erin Horticulture ,N/a	Derinlough,Birr,Co. Offaly,,Ireland
Within the Country	20 01 33	No	271.02	plastics	R13	M	Weighted	Offsite in Ireland	Eurokey Recycling Ltd,Broker	Unit 2 Logix Road,R D Park,Hinckley,LE10 3BQ,United Kingdom
Within the Country	15 01 01	No	0.36	paper and cardboard packaging	R13	M	Weighted	Offsite in Ireland	Flood Recycling,Broker	15 Knockaulin,Leixlip,Co. Kildare,,Ireland
To Other Countries	20 01 01	No	23.4	paper and cardboard	R13	M	Weighted	Offsite in Ireland	Fuyang Bian Xin Paper Co Ltd,Broker	Guan Shan Industry Park,Chang Tsai,Zhang Zhou City,Fujian,China
To Other Countries	20 01 01	No	688.53	paper and cardboard	R13	M	Weighted	Offsite in Ireland	Greenway Ireland Ltd,Broker	11 Portkill Road,Mountorris,Co. Armaagh,BT60 2TY,Ireland
To Other Countries	20 01 33	No	442.94	plastics	R13	M	Weighted	Offsite in Ireland	Greenway Ireland Ltd,Broker	11 Portkill Road,Mountorris,Co. Armaagh,BT60 2TY,Ireland
Within the Country	15 01 01	No	14784.04	paper and cardboard packaging	R13	M	Weighted	Offsite in Ireland	Greyhound,W0205-01	Crag Avenue,Clonsalkin,Dublin 22,,Ireland
Within the Country	15 01 02	No	1161.72	plastic packaging	R13	M	Weighted	Offsite in Ireland	Greyhound,W0205-01	Crag Avenue,Clonsalkin,Dublin 22,,Ireland
Within the Country	15 01 03	No	383.02	wooden packaging	R13	M	Weighted	Offsite in Ireland	Greyhound,W0205-01	Crag Avenue,Clonsalkin,Dublin 22,,Ireland
Within the Country	15 01 04	No	14.6	metallic packaging	R13	M	Weighted	Offsite in Ireland	Greyhound,W0205-01	Crag Avenue,Clonsalkin,Dublin 22,,Ireland
Within the Country	20 01 01	No	8734.39	paper and cardboard	R13	M	Weighted	Offsite in Ireland	Greyhound,W0205-01	Crag Avenue,Clonsalkin,Dublin 22,,Ireland
Within the Country	20 01 33	No	20.0	plastics	R13	M	Weighted	Offsite in Ireland	Greyhound,W0205-01	Crag Avenue,Clonsalkin,Dublin 22,,Ireland
To Other Countries	15 01 01	No	242.24	paper and cardboard packaging	R13	M	Weighted	Offsite in Ireland	Harmon Internation,Broker	Tithe Barn,Bradbourne Stables Bradbourne House,East Malling Kent,ME19 6D2,United Kingdom
Within the Country	20 01 01	No	1450.76	paper and cardboard	R13	M	Weighted	Offsite in Ireland	Highlander International,Broker	Natural Energy & Recycling Ltd,7 Greenlea Drive,Terenure,Dublin 6,Ireland
To Other Countries	20 01 01	No	16.72	paper and cardboard	R13	M	Weighted	Offsite in Ireland	IEH Recycling Belgium,Broker	Vsart 22,2310,Rijkevorsel,Belgium,Belgium
To Other Countries	15 01 02	No	266.26	plastic packaging	R13	M	Weighted	Offsite in Ireland	IEH Recycling Belgium,Broker	Vsart 22,2310,Rijkevorsel,Belgium,Belgium
To Other Countries	20 01 01	No	1499.46	paper and cardboard	R13	M	Weighted	Offsite in Ireland	IndoseroH,Broker	Indo China Europe BVBA,Kleinhoefstraat 5,2440 Geel,,Germany
To Other Countries	20 01 33	No	121.7	plastics	R13	M	Weighted	Offsite in Ireland	IndoseroH,Broker	Indo China Europe BVBA,Kleinhoefstraat 5,2440 Geel,,Germany
To Other Countries	15 01 01	No	231.64	paper and cardboard packaging	R13	M	Weighted	Offsite in Ireland	Ji'an Group Co Ltd,Broker	B7 Road Huangshou Bay Bridge,New Zone,Haiyan,Zhenjiang 314300,China
To Other Countries	20 01 01	No	422.26	paper and cardboard	R13	M	Weighted	Offsite in Ireland	Jiangsu Provincial Foreign Trade Corporation,Broker	24/F Xinhua Mansion No 55,Zhong Shan Road,Nanjing,,China
Within the Country	20 01 01	No	31.22	paper and cardboard	R13	M	Weighted	Offsite in Ireland	John Howard,N/a	Beechfield House,Ballyvarney,Nurney, Co. Kildare,Ireland
To Other Countries	20 01 33	No	266.68	plastics	R13	M	Weighted	Offsite in Ireland	Lawsco BV,Broker	Prinsingel 51,2303 Re Capelle Aan Den IJssel,,Netherlands

Within the Country	20 01 01	No	143.47	paper and cardboard	R13	M	Weighted	Offsite in Ireland	Loch Papers, N/a	Shamrock Place, North Strand, Dublin 1, Ireland
Within the Country	20 01 39	No	78.72	plastics	R13	M	Weighted	Offsite in Ireland	Leicester Environmental, Wp 2004/03	Dundalk, Co. Louth, Ireland
Within the Country	15 01 01	No	250.08	paper and cardboard packaging	R13	M	Weighted	Offsite in Ireland	M/S Vishwanath Paper and Boards Ltd, Broker	Haduzshu, Tehjaspur, Uttarakhand 244713, India
To Other Countries	20 01 39	No	468.38	plastics	R13	M	Weighted	Offsite in Ireland	Mainetti (UK) Ltd, Broker	Road, Jedburgh, Roxburghshire, TD8 6NN, United Kingdom
To Other Countries	20 01 01	No	9032.28	paper and cardboard	R13	M	Weighted	Offsite in Ireland	Mark Lyndon Paper Ent Ltd, Broker	12 The Triangle, Nottingham, NG2 1AE, United Kingdom
To Other Countries	20 01 01	No	10115.32	paper and cardboard	R13	M	Weighted	Offsite in Ireland	Marwin Environmental Trading Ltd, Broker	7 Glyntown Heights, Glanmire, Co. Cork, Ireland
Within the Country	15 01 01	No	3374.02	paper and cardboard packaging	R13	M	Weighted	Offsite in Ireland	Midland Waste, W0131-02	Proudstown Road, Navan, Co. Meath, Ireland
Within the Country	15 01 02	No	10.68	plastic packaging	R13	M	Weighted	Offsite in Ireland	Midland Waste, W0131-02	Proudstown Road, Navan, Co. Meath, Ireland
Within the Country	15 01 03	No	1.08	wooden packaging	R13	M	Weighted	Offsite in Ireland	Midland Waste, W0131-02	Proudstown Road, Navan, Co. Meath, Ireland
Within the Country	20 01 01	No	17.24	paper and cardboard	R13	M	Weighted	Offsite in Ireland	Midland Waste, W0131-02	Proudstown Road, Navan, Co. Meath, Ireland
To Other Countries	20 01 01	No	10305.42	paper and cardboard	R13	M	Weighted	Offsite in Ireland	MLM Ltd, Broker	Business Park, Wilmlov Rd Didsbury Manchester, M20 2YY, United Kingdom
To Other Countries	20 01 39	No	57.3	plastics	R13	M	Weighted	Offsite in Ireland	MLM Ltd, Broker	Business Park, Wilmlov Rd Didsbury Manchester, M20 2YY, United Kingdom
Within the Country	15 01 03	No	0.34	wooden packaging	R13	M	Weighted	Offsite in Ireland	Greenstar/M3M Recycling, W0079-01	Unit 41, Cookstown Industrial Estate, Tallaght, Dublin 24, Ireland
Within the Country	20 01 40	No	210.31	metals	R13	M	Weighted	Offsite in Ireland	Greenstar/M3M Recycling, W0079-01	Unit 41, Cookstown Industrial Estate, Tallaght, Dublin 24, Ireland
Within the Country	20 01 39	No	10.62	plastics	R13	M	Weighted	Offsite in Ireland	Pac On Waste & Recycling Ltd, WPT 122	B.E.A.T Centre, Stephenstown Industrial Estate, Balbriggan, Co. Dublin, Ireland
To Other Countries	20 01 01	No	44.16	paper and cardboard	R13	M	Weighted	Offsite in Ireland	Peute Papier Recycling BV, Broker	Baanhoekweg 4, 3313 La Dordrecht, Netherlands
To Other Countries	20 01 39	No	362.81	plastics	R13	M	Weighted	Offsite in Ireland	Peute Papier Recycling BV, Broker	Baanhoekweg 4, 3313 La Dordrecht, Netherlands
To Other Countries	20 01 39	No	100.32	plastics	R13	M	Weighted	Offsite in Ireland	Rainbow Recycling Corporation, Broker	Level 24 68 Yansie Road, Galaxy Mansion, Hexi District, Tianjin, China
Within the Country	20 01 01	No	62.78	paper and cardboard	R13	M	Weighted	Offsite in Ireland	Rebox, N/a	2B Kylemore Ind Est, Ballyfermot, Dublin 10, Ireland
Within the Country	20 01 01	No	7.64	paper and cardboard	R13	M	Weighted	Offsite in Ireland	Recycle 2000, N/a	Wexford Enterprise Centre, Kerlogue Ind Est, Rosslare Road, Co. Wexford, Ireland
To Other Countries	20 01 01	No	76.04	paper and cardboard	R13	M	Weighted	Offsite in Ireland	Refal Environmental Services Ltd, Broker	3rd Industrial City, Al Kharij Road, PO Box 355010, Rijsdijk-11383, Saudi Arabia
Within the Country	20 01 01	No	8.36	paper and cardboard	R13	M	Weighted	Offsite in Ireland	Rohiszwolf Ltd, Broker	Unit 9 Springhill Road, Carnebane Industrial Estate, Newry, Co. Down, Ireland
To Other Countries	20 01 01	No	193.3	paper and cardboard	R13	M	Weighted	Offsite in Ireland	Remondis, Broker	138, 44536 Lunenm, Amtsgericht Dortmund, HRE 22886, Germany
To Other Countries	20 01 01	No	16162.76	paper and cardboard	R13	M	Weighted	Offsite in Ireland	Scs.Emd Recycling, Broker	543 Hythe Lane, Larkfield Aylesford, Kent, M320 TPE, United Kingdom

Within the Country	20 01 39	No	28.59	plastics	R13	M	Weighed	Offsite in Ireland	Shabro Plastics and Recycling Ltd,WFP-MN-08-0022-01	Kilcard Ind Est,Bree,Castletlany,Co. Monaghan,Ireland
Within the Country	20 01 39	No	2.08	plastics	R13	M	Weighed	Offsite in Ireland	Smallwares,N/a	The Irish Hanger Company,Castletlany,Ireland
Within the Country	20 01 39	No	136.7	plastics	R13	M	Weighed	Offsite in Ireland	Sprinfeld Plastics 343 Ltd,N/a	Mount Mahon Industrial Estate,Abbeysfeale,Co. Limerick,,Ireland
Within the Country	20 01 01	No	2.46	paper and cardboard	R13	M	Weighed	Offsite in Ireland	Sprinfeld Plastics 343 Ltd,N/a	Mount Mahon Industrial Estate,Abbeysfeale,Co. Limerick,,Ireland
To Other Countries	20 01 39	No	1657.82	plastics	R13	M	Weighed	Offsite in Ireland	Tianjin Yunxiang Toning Metal Product Co,Broker	Room 102 Haijing Building,No 137 Hsibin Fifteen Road,TPPTS,,China
Within the Country	20 01 01	No	4.2	paper and cardboard	R13	M	Weighed	Offsite in Ireland	Tree Friendly Cartos,N/a	Reack,Dunshaughlin,Co. Meath,,Ireland
To Other Countries	20 01 01	No	415.8	paper and cardboard	R13	M	Weighed	Offsite in Ireland	Vipa Lusanne SA,Broker	Galeries Benjamin Constan 1,Case Postable T700,1002 Lausanne (Ch),,Switzerland
To Other Countries	20 01 01	No	539.58	paper and cardboard	R13	M	Weighed	Offsite in Ireland	Waste Management Solutions Ltd,Broker	Units 15-16 Aston Fields Trading Estate,Aston Road,Bromsgrove Worcester,Worcestershire,B60 4FF,United Kingdom
To Other Countries	16 01 03	No	278.52	end-of-life tyres	R13	M	Weighed	Offsite in Ireland	Wian Ying Trading Ltd,Broker	Room 3419 34F,He Li Ho,Wsh Lu I Estate,Lo Chi Kon Kin,Hong Kong
To Other Countries	20 01 39	No	346.24	plastics	R13	M	Weighed	Offsite in Ireland	WRC Recycling,Broker	Auchans Farm,Johnstone,Renfrewsh ire,PA6 7EE,United Kingdom
To Other Countries	20 01 01	No	52.3	paper and cardboard	R13	M	Weighed	Offsite in Ireland	WRC Recycling,Broker	Auchans Farm,Johnstone,Renfrewsh ire,PA6 7EE,United Kingdom
To Other Countries	20 01 01	No	3378.3	paper and cardboard	R13	M	Weighed	Offsite in Ireland	Wuxi Longchem Paper Co Ltd,Broker	43 Zhongxing West Rd,Louche Town,Huizhan District Wuxi,Jianqzu,China
To Other Countries	20 01 01	No	687.06	paper and cardboard	R13	M	Weighed	Offsite in Ireland	Zhejiang Zhongda Technical Import Co Ltd,Broker	Add 15F-16H Huazhon Building,58 XI HU RD,Huanqzhou,,China
To Other Countries	20 01 01	No	3105.46	paper and cardboard	R13	M	Weighed	Offsite in Ireland	Zhejiang Dingzun Trading Co Ltd,Broker	No 356 Huzhunan Road,Huanqzhou,,China
To Other Countries	20 01 01	No	721.96	paper and cardboard	R13	M	Weighed	Offsite in Ireland	Zhejiang Longchem Paper Co Ltd,Broker	No 1 Xinghua Section,Wangjin Road,Guantang Town,Pinghu City Zhejiang,China
To Other Countries	20 01 01	No	4009.72	paper and cardboard	R13	M	Weighed	Offsite in Ireland	Zhongshan Yongfa Paper Industries Co Ltd,Broker	In Zhongshan Sugar Factory,Huangpu Town,Zhongshan City,,China
To Other Countries	20 01 01	No	15.02	paper and cardboard	R13	M	Weighed	Offsite in Ireland	ZS Green Environmental Solutions Ltd,Broker	13 The Willows,Fotarock,Carritt wohill,Co. Cork,Ireland
To Other Countries	20 01 01	No	1195.12	paper and cardboard	R13	M	Weighed	Offsite in Ireland	ZS Green Environmental Solutions Ltd,Broker	13 The Willows,Fotarock,Carritt wohill,Co. Cork,Ireland
Within the Country	20 01 39	No	0.66	plastics	R13	M	Weighed	Offsite in Ireland	Panda Navan,W0140-03	Rathdringh,Beauparc Business Park,Navan,Co. Meath,Ireland
Within the Country	20 01 01	No	243.84	paper and cardboard	R13	M	Weighed	Offsite in Ireland	Panda Navan,W0140-03	Rathdringh,Beauparc Business Park,Navan,Co. Meath,Ireland
Within the Country	20 01 40	No	5.12	metals	R13	M	Weighed	Offsite in Ireland	Panda Navan,W0140-03	Rathdringh,Beauparc Business Park,Navan,Co. Meath,Ireland
Within the Country	15 01 03	No	3.86	wooden packaging	R13	M	Weighed	Offsite in Ireland	Greenstar Ballymount,W0033-02	Ballymount Cross,Tallaght,Dublin 24,,Ireland
Within the Country	20 01 01	No	411.74	paper and cardboard	R13	M	Weighed	Offsite in Ireland	Greenstar Ballymount,W0033-02	Ballymount Cross,Tallaght,Dublin 24,,Ireland

Within the Country, 20 01 40	No	2.34 metals	R13	M	Weighted	Offsite in Ireland	Greenstar Ballymount, W0039-02	Ballymount Cross, Tallaght, Dublin 24, Ireland
------------------------------	----	-------------	-----	---	----------	--------------------	-----------------------------------	--