



ANNUAL ENVIRONMENTAL REPORT 2010

GREYHOUND RECYCLING & RECOVERY LTD.

Crag Avenue
Clondalkin Industrial Estate,
Dublin 22

EPA Licence W0205-01

CONTENTS

1. Introduction	3
2. Licensed Activities	3
3. Waste Accepted 2010	4
4. Waste Quantities 2010	4
5. Environmental monitoring and emission data 2010	6
6. Resource and energy consumption 2010	8
7. Facility Development works 2010	9
8. Environmental Systems and Procedures	9
9. Review of Environmental Objectives and Targets for 2010 and update Environmental Objectives and Targets for 2011	10
10. Incidents 2010	12
11. Complaints 2010	12
12. Odour Management Programme	12
13. Review of nuisance controls.	12
14. Volume of trade effluent / leachate and / or contaminated storm water produced and volume transported off-site	13
15. Financial Provision	13
16. Management and Staffing Structure	14
17. Programme for Public Information	15
18. Residual Management Plan	15
19. Environmental liabilities risk assessment	15

1. INTRODUCTION

The following Annual Environmental Report was prepared in accordance with Condition 11.11 and Schedule E of the waste licence W0205-01, and with reference to Environmental Protection Agency guidance on Annual Environmental Reporting. This AER is detailing the activities carried out at the facility in the period from 1st September 2010 to 31st December 2010.

2. DESCRIPTION OF THE SITE AND LICENSED ACTIVITIES

Greyhound Recycling and Recovery Limited (GRR), Sustainable Resource Recovery Facility at Crag Avenue, Clondalkin Industrial Estate, Dublin 22, is surrounded in Industrial Estate by various warehouses and industrial buildings. The estate is bounded to the west by the M50 Motorway, to the south by the Grand Canal, to the east by Cloverhill Road and to the north by the Dublin-Kildare railway line and Cloverhill Industrial Estate, an industrial estate managed by the IDA.

Greyhound Recycling and Recovery Limited, at Crag Avenue site commenced its operation under the Waste Licence W0205-01 in September 2007. This licence allows to carry out following activities:

- Class 11, 12, and 13 Waste Disposal Activities, in accordance with the Third Schedule of the Waste Management Act, 1996.
- Class 2, 3, 4, 8, 11, 12 and 13 Waste Recovery Activities, in accordance with the Fourth Schedule of the Waste Management Act, 1996.

Greyhound Recycling & Recovery at Crag Avenue, accepts primarily non-hazardous commercial and industrial waste, and construction and demolition waste. In 2010 Crag Avenue facility has accepted 17,600 tonnes of non recyclable fraction of household waste from Dublin City Council, Material Recovery Facility W0238-01. This material was diverted into Solid Recovered Fuel for energy recovery.

Source segregated recyclables are collected by Greyhound throughout Ireland. This material was delivered to Crag Avenue facility during January and February 2010. Source segregated recyclables were baled and shipped mainly to overseas recycling facilities.

The Mixed Municipal Waste and Construction and Demolition Waste are mainly from the Dublin County area. MMW is graded post arrival to the facility. Unsuitable material for SRF processing is sent for disposal.

3. WASTE ACCEPTED 2010

Greyhound Recycling and Recovery Limited accepted the following waste streams during the reporting period:

- Commercial waste comprising of source segregated cardboard, paper, plastics, metals and wood, mixed municipal waste and mixed packaging waste
- Industrial waste comprising of source segregated cardboard, paper, plastics, metals and wood, mixed municipal waste and mixed packaging waste
- Mixed construction and demolition waste comprising of timber, metals, plastics, rubble, stones, soil and other inert materials.
- Mixed Dry Municipal household waste

4. WASTE QUANTITIES 2010

The Greyhound Recycling and Recovery at Crag Avenue is licensed to handle a maximum of 250,000 tonnes of waste per annum. The total quantity of material accepted and processed at the licensed facility during the reporting period was over 152,000 tonne. The percentage of recycling and recovery achieved on wastes handled at the facility during the reporting period was 76.5%. A tabulated breakdown of the quantity and composition of wastes received, recovered, and disposed of, during the reporting period shows table 4.1.

The storage tonnage at the end of 2010 was lower of 2600 tonnes than at the end of 2009.

4.1 Waste acceptance and dispatch

EWC Code	Description of Waste	Waste in (tonnes)	Waste out (tonnes)	Recovery Disposal	%
02 01 06	horse manure mixed with straws	280	251	Recovery	0,16
02 03 04	vegetable origin food unsuitable for consumption	35			
02 06 01	confectionary Waste	43	53	Disposal	0,03
13 05 03	interceptor sludge		68	Disposal	0,04
15 01 01	cardboard boxes, cardboard packaging, cores	1891	2491	Recovery	1,62
15 01 02	boxes , bottles, plastic film, straps	124	251	Recovery	0,16
15 01 03	wooden pallets	2290	2183	Recovery	1,42
15 01 04	aluminium cans	6	4	Recovery	0,00
15 01 05	Labels	468			
15 01 06	mixed dry recyclables from commercial collections	8197	9339	Recovery	6,08
15 01 07	glass bottles	250	275	Recovery	0,18
16 01 03	car and truck tyres	6	19	Recovery	0,01
16 01 20	car windscreens, other double liner glass	390	327	Recovery	0,21
16 06 01	lead batteries	179	166	Recovery	0,11
17 01 01	Concrete		102	Recovery	0,07
17 04 01	Copper pipes, copper cylinders & other copper scrap	1183	1328	Recovery	0,86
17 04 02	Aluminium frames, fascia, soffits and other aluminium scrap	1900	2305	Recovery	1,50
17 04 05	Iron & steel scrap from C&D	3390	3495	Recovery	2,28
17 04 07	mixed non-hazardous, non-ferrous metals	1416	1612	Recovery	1,05
17 05 04	soil and stones from excavations	971			
17 08 02	Plasterboard	70	68	Recovery	0,04
17 09 04	mixed rubble, C&D material	6415	8585	Recovery	5,59
19 12 01	shredded office paper	10			
19 12 08	shredded clothing	3			
19 12 09	finer from C&D waste		3277	Recovery	2,13
19 12 10	Off spec SRF		1691	Disposal	1,10
19 12 10	SRF	245	60650	Recovery	39,50
19 12 12	organic screenings		16389	Recovery	10,67
19 12 12	residuals from MDR processing	17240			
19 12 12 / 20 03 01	residuals from SRF processing and non-processed mixed municipal waste		34281	Disposal	22,33
20 01 01	office mixed paper, newspapers, printers mix	813	1196	Recovery	0,78
20 01 08	source segregated food waste from commercial sources	161	127	Recovery	0,08
20 01 35*	mixed WEEE such as: white goods, TVs, monitors, PCs, fridges, other	25	3	Recovery	0,00
20 01 36	mixed WEEE		16	Recovery	0,01
20 01 39	hard plastics: toys, pipes, crates, plates	76	102	Recovery	0,07
20 01 39	hard plastics: toys, pipes, crates, plates		69	Disposal	0,04
20 01 40	source segregated metals form commercial and industrial sources	631	635	Recovery	0,41
19 12 02	metals separated from MMW		2171	Recovery	1,41
20 03 01	MMW from commercial and industrial sources	103668			
	Total	152376	153529		

5. ENVIRONMENTAL MONITORING AND EMISSIONS DATA

Monitoring of emissions from the facility during the reporting period was carried out in accordance with Condition 8 and Schedule B and C of Greyhound Recycling and Recovery Ltd. waste licence W0205-01.

Dust deposition monitoring

The dust monitoring was carried out on two occasions at two locations in June 2010 and July 2010. The dust deposition did not exceed the licensed limits. The results of the dust monitoring are shown in the below table and the certificates were attached into the report (see Appendix 1- Environmental Monitoring

Table 5.1

Monitoring Period		D1	D2
		ELV 350 mg/m ² /d	ELV 350 mg/m ² /d
From	To	mg/m ² /d	From
27/05/2010	29/06/2010	53	135
29/06/2010	3/08/2010	132	124

Foul Sewer discharge monitoring

In accordance with Waste Licence W0205-01 the wastewater monitoring should be carried out monthly. Greyhound analysed storm water nine times in 2010. All samples were taken from the Sewer Emission Monitoring point SE1.

The results of the analysis are shown in the below table and the certificates were attached into the report (see Appendix 1- Environmental Monitoring). The content of the analysed parameters did not exceed the limits levels set in the licence so the discharge was compliance with the W0205-01.

Table 5.2

Date sampled	BOD	COD	Suspended Solids	Oil fats & greases	pH	Sulphates	Mineral oil	Phosphates	Detergent
(mg/l)	2000	8000	2000	200	6-10	500	10	100	100
24/03/2010	510	693	248	2	4.9	59	-	6	0.3
06/04/2010	75	260	117	<1	7.5	26	-	1	0.5
28/06/2010	15	110	48	<1	8.2	43	0.14	4	0.3
08/07/2010	205	591	63	26	6.7	82	0.9	0.7	5
06/09/2010	240	352	105	9	9.3	60	0.3	7	0.2
30/09/2010	128	203	43	8	7.7	62	0.6	4.4	5.6
30/10/2010	130	223	55	<1	8.9	74	0.16	7	0.1
3/12/2010	21	92	22	<1	8.5	53	0.003	0.8	0.05
29/12/2010	32	80	15	16	6.8	53	0.003	0.1	7

Surface Water discharge monitoring

In accordance with Waste Licence W0205-01 the surface water monitoring should be carried out quarterly. Greyhound analysed storm water 6 times in 2010. In addition the colour, smell and conductivity was examined on a daily basis by the Site Supervisor.

All samples were taken from the Storm Water Monitoring point SW1. The results of the analysis are shown in the below table and the certificates were attached into the report (see Appendix 1- Environmental Monitoring).

Table 5.3

Date sampled	pH	COD	Suspended Solids	Oils, Fats and Greases
06/04/2010	7.8	53	6	<1
06/09/2010	7.3	36	20	<1
30/09/2010	7.2	88	32	-
3/12/2010	7.6	5	6	<1
29/12/2010	7	69	27	<1

Noise Monitoring

In accordance with Waste Licence W0205-01 the noise monitoring should be carried out annually, during night and day activity. In 2010 noise monitoring was carried out on 27th and 28th May 2010 by Glenside Environmental in 5 monitoring points (see attached Noise Monitoring Report). Noise characteristics of the area are typical of an industrial estate zoned for light industrial activity. Additional noise sources emanated mainly from motor way M50 which is 100m away from Greyhound's boundary and also from nearby passing trains, and overhead aircraft and banging sounds associated with industrial activity. Existing road traffic was the dominant noise source for the majority of the time. The ambient noise in this industrial area is above the licence limitation of W205-01 which makes impossible to not to exceed the noise limits levels in any of the monitoring points. The results of the noise monitoring are shown in the below table and the certificates were attached into the report (see Appendix 1- Environmental Monitoring)

Table 5.4

Monitoring location	Day /Night period	L _{Aeq} dB(A)	L _{A90} dB(A)	L _{A10} dB(A)
Noise Emission Limits		Daytime dB(A) L _{Aeq} (30 minutes)	55 dB(A)	
		Night-time dB(A) L _{Aeq} (30 minutes)	45 dB(A)	
N1	Day	59.2	51.5	61.1
	Night	58.8	48.7	60.0
N2	Day	54.4	48.8	56.6
	Night	47.4	43.4	49.5
N3	Day	57.9	47.7	59.9
	Night	46.6	42.2	47.8

N4	Day	62.2	50.2	64.5
	Night	58.9	47.9	60.2
N5	Day	67.5	53.3	68.1
	Night	65.5	51.1	67.2

Monitoring was carried out on the 27th and 28th May 2010

6. RESOURCE AND ENERGY CONSUMPTION

Since September 2010 all fixed machinery plant is powered by electricity. Only mobile plant use gas oil on site.

Data on resource, energy and primary raw material consumption for the reporting period is presented in Table 6.1 (below).

Table 6.1: Resource and Energy Usage in 2010.

Raw Material/Resource	Application	Consumption
Detergent	Vehicle and plant washing	2400 litres
Deodorising liquid	Misting system	1300 litres
Electricity	Office and plant.	3850MWh
Mains water	Washing, Site cleaning, NAPS washing, Hard plastic line	3230 cubic meters
Hydraulic Oil	Process plant and fleet vehicles.	8800 litres
Marked Diesel	Mobile plant machinery	246,000 litres

7. FACILITY DEVELOPMENT WORKS.

During the reporting period Greyhound Recycling and Recovery carried out a number of development projects to improve and develop the facility plant and infrastructure. A summary of the developments undertaken is presented in Table 7.1(below).

Table 7.1 Development Works undertaken during the reporting period.

Project Objective	Works undertaken
Decrease of nuisance emission	<ul style="list-style-type: none"> • Ex-situ carbon regeneration of NAPS • Reinstallation of rapid doors in shed 2 • Installation of misting system on the North outside wall of SRF processing building and internally in the Air-lock building (entrance to shed 2, waste acceptance area). • Resealing of shed 2 followed by a smoke test • 20 new bait boxes was installed by Pest Guard for batter vermin control.
Increase recycling/recovery of source segregated and mixed waste.	<ul style="list-style-type: none"> • Installation of baler-wrapper unit for SRF material •
Prevent any contaminants entering the surface water system.	<ul style="list-style-type: none"> • Installation of oil interceptor for yard 2 South • Resurfacing yard 2 South • Resurfacing part of Yard 3 • Sealing the surrounding wall of shed 2 to prevent leakage escape
Better housekeeping of the site	<ul style="list-style-type: none"> • Yards repairs- over 450m² of new hardstanding area • New hardstanding area in North-East yard section

8. ENVIRONMENTAL SYSTEMS & PROCEDURES

Greyhound Recycling and Recovery Ltd. facility at Crag Avenue hold ISO9001 and ISO14001 management system accreditations. All reviews, amendments, and implementations of quality and environmental procedures are undertaken within the framework of the ISO9001 and ISO14001 management systems.

9. REVIEW OF ENVIRONMENTAL OBJECTIVES AND TARGETS FOR 2010 AND UPDATE THE ENVIRONMENTAL OBJECTIVES AND TARGETS FOR 2011

No.	Aspect(s)	Objective	Target	Status
1	Waste Management	Ensure the most efficient and environmentally sustainable management of client waste streams.	Install additional equipment in the SRF Laboratory to carry out CV and Chloride analysis on a daily basis.	Project on hold
			Prepare project for SRF drying	September 2011
			Prepare project of SRF gasification	Project on hold
2	Air	Reduce odour emissions from wet waste handling and processing activities	Upgrade Odour Abatement System	August 2011
			Replace the activated carbon in the existing Negative Air Pressure System (NAPS)	July 2011
			Expand the monitoring parameters and frequency of NAPS.	Commenced April 2010
			Review the washing and regeneration frequency of NAPS carbon and NAPS procedure	Completed August 2010
3	Water / Oil	Prevent surface water contamination	Installation of second class 1 full retention oil separator for yard 2 North. Upgrade drainage system	Completed April 2010
			Retrain all operatives on Spillage Response and Bunds usage	ongoing
			Separate by kerbing and ramps different surface water risk pollution areas where required	August 2011
			Bunds integrity testing	May 2011
			Upgrade water treatment utility at the truck wash bay.	August 2011

			Upgrade drainage system in the Yard 3 South. Connect water discharge to the existing CN50 class 1 full retention oil separator.	August 2011
4	Traffic	Achieve organised, efficient and safe movement of cars, trucks and machinery on site minimising noise and emissions	Repair existing traffic control units. New traffic management plan for the site	April 2011
			Patch all holes in the concrete pavement, seal joints in concrete paving with bitumen	Ongoing
			Identify areas for further concrete improvement works	Ongoing
5	Infrastructure & Systems	Environmentally efficient and Safety management of waste operation	Installation of cover over the Diesel Bund	June 2011
			Integrity tests of oil and diesel bund	June 2011
			Re-surface and upgrade drainage in Yard 2 North at the back of the Office building	Completed April 2010
			Submit repair and maintenance plan for hardstanding areas	Completed Jun 2010
			Commence plan for hardstanding areas	Commenced May 2010
			Re-surface and upgrade drainage in Yard 3 North.	August 2011
6	Nuisance	Decrease nuisance such as vermin, birds and flies	Implement plan for management of birds and flies on site	Completed March 2010
			Annual contract for fly control	Signed January 2011
			Upgrade pest control system	Completed October 2010
7	Resource use and Energy Efficiency	Identify opportunities for energy use reduction and efficiency. Identify opportunities for reduction in the quantity of water used on site	Installation of rain water retention tank. Connect the following units to the tank: truck wash, washing system of NAPS	September 2011

10. INCIDENTS

There was one reportable incident on site in 2010. Smoke was detected in the SRF storage shed on 30th August 2010. This was a minor incident and there was no impact on the environment. Furthermore, there was no impact on neighbouring business. Greyhound has taken appropriate actions to prevent a reoccurrence of this type of incident in future.

11. COMPLAINTS

Facility has received large amounts of complaints during the reporting period. All 64 complaints received during the reporting period were related to odour. All complaints were recorded and followed with the appropriate measurements.

12. ODOUR MANAGEMENT PROGRAMME

The odour management programme for licensed facility was submitted to the Agency on 25th September 2009. In 2010 the following works were done to improve the Negative Air Pressure System (NAPS) operation:

- In August the NAPS Procedure was revised and amended in accordance with new IPEC (system manufacturer) recommendations.
- In August-September GRR carried out full washing and regeneration of the carbon. For this purpose was used around 100-150 cu meters of water, 1000 liters of methanol, 5500 liters of caustic soda and 2000liters of hydrogen peroxide.
- In September Odour Monitoring Ireland carried out the assessment of the NAPS
- In August the SRF processing shed was resealed what was followed by a smoke test carried out by Odour Monitoring Ireland.
- In January 2010 NAPS was reviewed by system supplier IPEC (see attached report).

13. REVIEW OF NUISANCE CONTROLS.

Daily inspections were carried out on site by Site Manager or Environmental Manager which highlighted any nuisances such as litter, pests, noise, flies odour or dust.

All discovered nuisances were recorded and appropriate measurements were taken in accordance with corresponding procedure.

During the daily odour assessment for the 2010 reporting period odour was detected on the following:

- 64 days there was a faint or moderate odour but only detected within the boundary
- 15 days there was faint or moderate odour detected outside the boundary mainly at Crag Crescent (the East boundary of the facility).

Pest contractor, Pest Guard carried out 9 visits to control vermin, during which rebate rat poison in the boxes, replaced broken boxes or installed additional where required.

Other pest control contractor Rentokil visited Greyhound facility 36 times to spray the sheds on flies.

14. VOLUME OF TRADE EFFLUENT/LEACHATE AND OR CONTAMINATED STORM WATER PRODUCED AND VOLUME TRANSPORTED OFF-SITE

The following amount of effluent was sent off site during the 2010 reporting period:

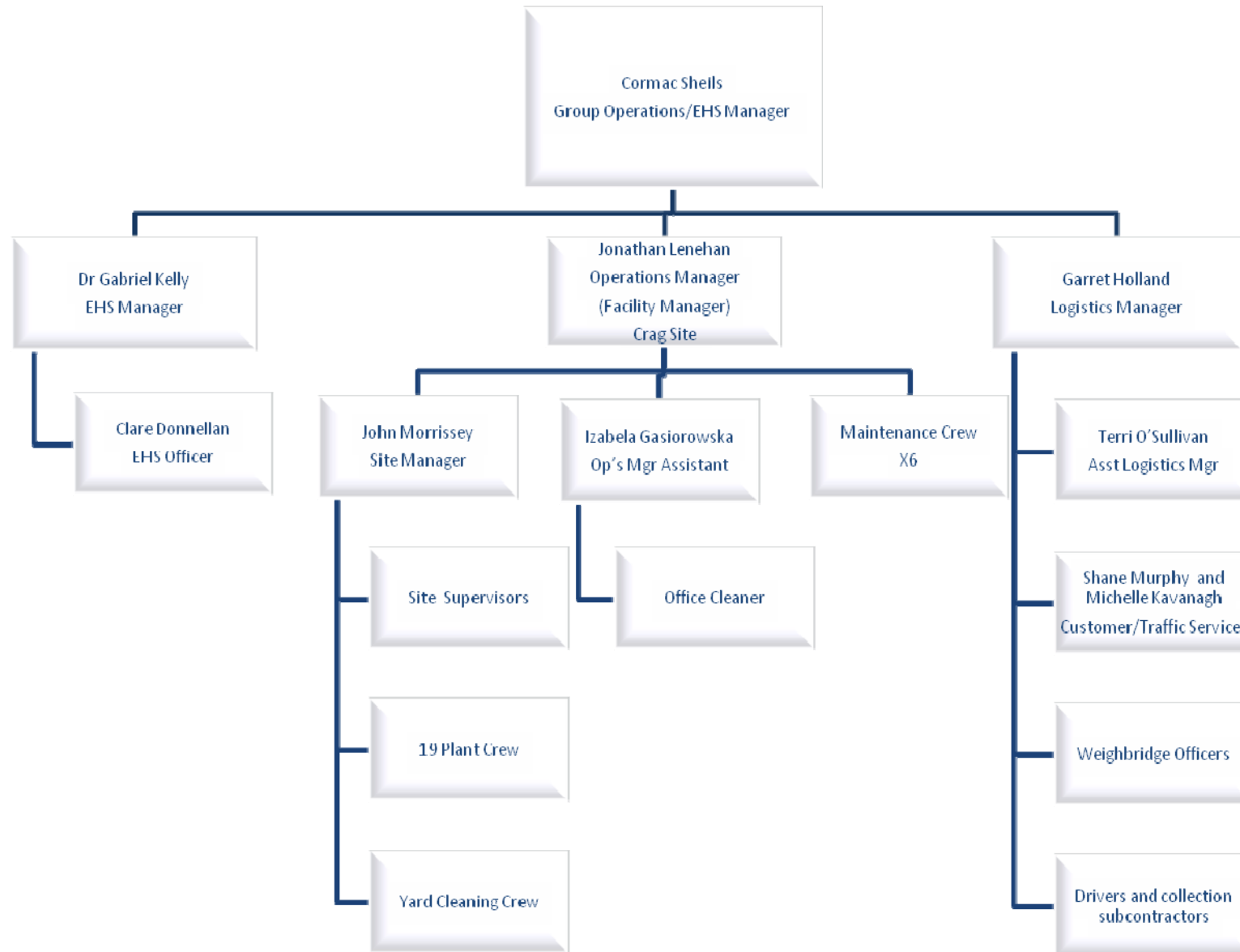
- 30 tonnes of interceptor sludge to Rilta Environmental
- 38 tonnes of interceptor sludge to Enva Ireland Ltd.

15. FINANCIAL PROVISION

Greyhound Recycling and Recovery Ltd. public and product liability indemnity limit is up to €6,500,000. In terms of environmental pollution the indemnity applies to damage to any buildings or other structures or of water or land or atmosphere caused by pollution or contamination. The policy covers pollution caused by a sudden, identifiable, unintended and unexpected event and not gradual pollution. This cover will be in excess of any environmental liability that may arise due to such incident.

All trans-frontier shipment of non-green list material undertaken by Greyhound Recycling and Recovery is effected under a financial guarantee calculated on the cost for return and disposal of material where warranted.

16. MANAGEMENT AND STAFFING STRUCTURE



17. PROGRAMME FOR PUBLIC INFORMATION

Greyhound Recycling and Recovery Limited maintains a *Public Information File* at the licensed facility. This file contains specified information relating the environmental performance of the Company. The file is available for inspection by the public on request at the facility. No public requests for information were received during the reporting period.

18. RESIDUALS MANAGEMENT PLAN

The Residual Management Plan has been updated in October 2010. The updated plan is attached to this AER.

19. ENVIRONMENTAL LIABILITY RISK ASSESSMENT

The Environmental Liability Risk Assessment was submitted with AER for 2009. There were no major changes in the environmental liabilities in 2010.



[Guidance to completing the PRTR workbook](#)

AER Returns Workbook

Version 1.1.11

REFERENCE YEAR	2010
-----------------------	------

1. FACILITY IDENTIFICATION

Parent Company Name	Greyhound Recycling & Recovery Limited
Facility Name	Greyhound Recycling & Recovery Limited
PRTR Identification Number	W0205
Licence Number	W0205-01

Waste or IPPC Classes of Activity	No.	class_name
	4.4	Recycling or reclamation of other inorganic materials.
	3.11	Blending or mixture prior to submission to any activity referred to in a preceding paragraph of this Schedule.
	3.12	Repackaging prior to submission to any activity referred to in a preceding paragraph of this Schedule.
	3.13	Storage prior to submission to any activity referred to in a preceding paragraph of this Schedule, other than temporary storage, pending collection, on the premises where the waste concerned is produced.
	4.11	Use of waste obtained from any activity referred to in a preceding paragraph of this Schedule.
	4.12	Exchange of waste for submission to any activity referred to in a preceding paragraph of this Schedule.
	4.13	Storage of waste intended for submission to any activity referred to in a preceding paragraph of this Schedule, other than temporary storage, pending collection, on the premises where such waste is produced.
	4.2	Recycling or reclamation of organic substances which are not used as solvents (including composting and other biological transformation processes).
	4.3	Recycling or reclamation of metals and metal compounds.
	4.8	Oil re-refining or other re-uses of oil.
Address 1		Crag Avenue
Address 2		Clondalkin Industrial Estate
Address 3		Clondalkin
Address 4		Dublin 22
Country		Ireland
Coordinates of Location		-6.38899 53.3323
River Basin District		IEEA
NACE Code		3832
Main Economic Activity		Recovery of sorted materials
AER Returns Contact Name		Michael O'Callaghan
AER Returns Contact Email Address		michaelo@greyhoundrecycling.com
AER Returns Contact Position		Director
AER Returns Contact Telephone Number		01 457 7777
AER Returns Contact Mobile Phone Number		
AER Returns Contact Fax Number		
Production Volume		0.0
Production Volume Units		
Number of Installations		0
Number of Operating Hours in Year		0
Number of Employees		0
User Feedback/Comments		
Web Address		

2. PRTR CLASS ACTIVITIES

Activity Number	Activity Name
50.1	General
5(c)	Installations for the disposal of non-hazardous waste
50.1	General

3. SOLVENTS REGULATIONS (S.I. No. 543 of 2002)

Is it applicable?	
Have you been granted an exemption?	
If applicable which activity class applies (as per Schedule 2 of the regulations)?	
Is the reduction scheme compliance route being used?	

4.2 RELEASES TO WATERS

[Link to previous years emissions data](#)

| PRTR# : W0205 | Facility Name : Greyhound Recycling & Recovery Limited | Filename : W0205_2010.xlsx | Return Year : 2010 |

18/7/2011 11:31

SECTION A : SECTOR SPECIFIC PRTR POLLUTANTS

Data on ambient monitoring of storm/surface water or groundwater, conducted as part of your licence requirements, should NOT be submitted under AER / PRTR Reporting as this only concerns Releases from your facility

POLLUTANT		RELEASURES TO WATERS			Please enter all quantities in this section in KGs			
No. Annex II	Name	M/C/E	Method Code	Method Used Designation or Description	Emission Point 1	T (Total) KG/Year	A (Accidental) KG/Year	F (Fugitive) KG/Year
					0.0	0.0	0.0	0.0

* Select a row by double-clicking on the Pollutant Name (Column B) then click the delete button

SECTION B : REMAINING PRTR POLLUTANTS

POLLUTANT		RELEASURES TO WATERS			Please enter all quantities in this section in KGs			
No. Annex II	Name	M/C/E	Method Code	Method Used Designation or Description	Emission Point 1	T (Total) KG/Year	A (Accidental) KG/Year	F (Fugitive) KG/Year
					0.0	0.0	0.0	0.0

* Select a row by double-clicking on the Pollutant Name (Column B) then click the delete button

SECTION C : REMAINING POLLUTANT EMISSIONS (as required in your Licence)

POLLUTANT		RELEASURES TO WATERS			Please enter all quantities in this section in KGs			
Pollutant No	Name	M/C/E	Method Code	Method Used Designation or Description	Emission Point 1	T (Total) KG/Year	A (Accidental) KG/Year	F (Fugitive) KG/Year
306	COD	E	ESTIMATE	total water released into surface water in 2010 - 18534cu.m (estimated)	0.0	0.0	0.0	0.0
240	Suspended Solids	E	ESTIMATE		929.0	929.0	0.0	0.0
314	Fats, Oils and Greases	E	ESTIMATE		337.0	337.0	0.0	0.0
					19.0	19.0	0.0	0.0

* Select a row by double-clicking on the Pollutant Name (Column B) then click the delete button

4.3 RELEASES TO WASTEWATER OR SEWER

[Link to previous years emissions data](#)

| PRTR#: W0205 | Facility Name : Greyhound Recycling & Recovery Limited | Filename : W0205_20

18/7/2011 11:31

SECTION A : PRTR POLLUTANTS

OFFSITE TRANSFER OF POLLUTANTS DESTINED FOR WASTE-WATER TREATMENT OR SEWER					Please enter all quantities in this section in KG:			
POLLUTANT		METHOD			QUANTITY			
No. Annex II	Name	M/C/E	Method Code	Method Used Designation or Description	Emission Point 1	T (Total) KG/Year	A (Accidental) KG/Year	F (Fugitive) KG/Year
					0.0	0.0	0.0	0.0

* Select a row by double-clicking on the Pollutant Name (Column B) then click the delete button

SECTION B : REMAINING POLLUTANT EMISSIONS (as required in your Licence)

OFFSITE TRANSFER OF POLLUTANTS DESTINED FOR WASTE-WATER TREATMENT OR SEWER					Please enter all quantities in this section in KG:			
POLLUTANT		METHOD			QUANTITY			
Pollutant No.	Name	M/C/E	Method Code	Method Used Designation or Description	Emission Point 1	T (Total) KG/Year	A (Accidental) KG/Year	F (Fugitive) KG/Year
				total water released into sewer in 2009 - 9410cu.m (estimated)				
303	BOD	E	ESTIMATE		0.0	0.0	0.0	0.0
306	COD	E	ESTIMATE		1418.0	1418.0	0.0	0.0
240	Suspended Solids	E	ESTIMATE		2723.0	2723.0	0.0	0.0
314	Fats, Oils and Greases	E	ESTIMATE		750.0	750.0	0.0	0.0
343	Sulphate	E	ESTIMATE		115.0	115.0	0.0	0.0
324	Mineral oils	E	ESTIMATE		535.0	535.0	0.0	0.0
332	Ortho-phosphate (as PO4)	E	ESTIMATE		3.0	3.0	0.0	0.0
308	Detergents (as MBAS)	E	ESTIMATE		32.0	32.0	0.0	0.0
					2.1	2.1	0.0	0.0

* Select a row by double-clicking on the Pollutant Name (Column B) then click the delete button

Within the Country	17 09 04	No	mixed construction and demolition wastes other than those mentioned in 17 09 01, 17 2502.0 09 02 and 17 09 03	R5	M	Weighted	Onsite in Ireland	Smart Recycling Limited , WFP-DC-08-0014-01	No.1 Jamestown Business Park, Jamestown Road Finglas D 11Ireland
Within the Country	17 09 04	No	mixed construction and demolition wastes other than those mentioned in 17 09 01, 17 2048.0 09 02 and 17 09 03	R5	M	Weighted	Onsite in Ireland	Premier Waste Management Ltd ,WFP-DS-09-0003-01	Unit 6 Premier Business Park, Ballymount D22Ireland
Within the Country	17 09 04	No	mixed construction and demolition wastes other than those mentioned in 17 09 01, 17 24.0 09 02 and 17 09 03	R5	M	Weighted	Onsite in Ireland	Bannmore Demolition & Civil Engineering Ltd. ,	21A Baldylee Ind. Est. D13.....Ireland
Within the Country	17 09 04	No	mixed construction and demolition wastes other than those mentioned in 17 09 01, 17 284.0 09 02 and 17 09 03	R5	M	Weighted	Onsite in Ireland	Concrete Recycling Specialist Ltd ,WPR-138-05	Barnan Dangan Co. OnayIreland
Within the Country	17 09 04	No	mixed construction and demolition wastes other than those mentioned in 17 09 01, 17 1074.0 09 02 and 17 09 03	R5	M	Weighted	Onsite in Ireland	Phacon Waste & Recycling Limited ,WPT 122	Unit 4F Fingal Bay Business Park, Ballyngan County DublinIreland
Within the Country	19 12 10	No	28740.0 combustible waste (refuse derived fuel)	R1	M	Weighted	Onsite in Ireland	Lagan Cement ,PO487 05	Kilaskillen Kinnegad Mullingar Co. WestmeathIreland
To Other Countries	19 12 10	No	7407.0 combustible waste (refuse derived fuel)	R1	M	Weighted	Abroad	CMP-Cimentos Macaris e Pataias S.A.,	Fabrica de Macolla Liz 2485-019 Macolla Liz Leiria Portugal,.....Portugal
To Other Countries	19 12 10	No	13782.0 combustible waste (refuse derived fuel)	R1	M	Weighted	Abroad	Aalborg Portland A/S ,	Portugal 44 Aalborg Os.....Denmark
To Other Countries	19 12 10	No	2500.0 combustible waste (refuse derived fuel)	R1	M	Weighted	Abroad	Cemex SIA ,	Rupicas street 10 Brocen LV-3851 Lhaina,.....Latvia
To Other Countries	19 12 10	No	2620.0 combustible waste (refuse derived fuel)	R1	M	Weighted	Abroad	Socil Companhia Geral de Cal e Cimento SA ,	Fabrica Cimento Apartado 71 2901-864 Setubal,.....Portugal
Within the Country	19 12 10	No	20.0 combustible waste (refuse derived fuel)	D1	M	Weighted	Onsite in Ireland	BORD na Mona Dehid Landfill ,W0201-02KildareIreland
Within the Country	19 12 10	No	1671.0 combustible waste (refuse derived fuel)	D1	M	Weighted	Onsite in Ireland	Laois County Council Kyleskeaha Landfill ,W0028LaoisIreland
Within the Country	19 12 10	No	5549.0 combustible waste (refuse derived fuel)	R13	M	Weighted	Onsite in Ireland	Stack R Warehouse ,WFP-DC-10-0019-01	Alexandra Road Dublin1Ireland
To Other Countries	19 12 10	No	52.0 combustible waste (refuse derived fuel)	R1	M	Weighted	Onsite in Ireland	Fibre Fuel Ltd c/o Slough Heat & Power ,	6 Edinbrough Ave Slough Berkshire SL34 7TUnited Kingdom
Within the Country	19 12 12	No	other wastes (including mixtures of materials from mechanical treatment of wastes other than those mentioned in 19 12 11	D8	M	Weighted	Onsite in Ireland	Neighn trading Limited T/A A1 Nass Co. Kildare Waste ,W004702	Keriffstown Johnstown Nass Co. KildareIreland
Within the Country	19 12 12	No	688.0 than those mentioned in 19 12 11	D8	M	Weighted	Onsite in Ireland	Nurendale Limited T/A Panda Rathdrinah Begaparc Waste Services ,W0140-02	Nawan Meath.....Ireland
Within the Country	19 12 12	No	6884.0 than those mentioned in 19 12 11	D8	M	Weighted	Onsite in Ireland	BORD na Mona Dehid Landfill ,W0201-02KildareIreland
Within the Country	19 12 12	No	600.0 than those mentioned in 19 12 11	D1	M	Weighted	Onsite in Ireland	Laois County Council Kyleskeaha Landfill ,W0028LaoisIreland
Within the Country	19 12 12	No	418.0 than those mentioned in 19 12 11	D1	M	Weighted	Onsite in Ireland	Greenstar Holdings Ltd ,	Ballynagran Residual Landfill Co. Wicklow.....Ireland
Within the Country	19 12 12	No	837.0 than those mentioned in 19 12 11	R1	M	Weighted	Onsite in Ireland	AVR Ahalververking B. V. ,	Professor Gebrandyweg 10 Nl, 2197 KC Rotterdam,.....Netherlands
Within the Country	19 12 12	No	13.0 than those mentioned in 19 12 11	R12	M	Weighted	Onsite in Ireland	Grayhound Recovery & Recycling Ltd ,WPO5-08	Galcone Industrial Estate LimerickIreland
Within the Country	13 05 03	Yes	38.0 interceptor sludges	D8	M	Weighted	Onsite in Ireland	ENVA Ireland Ltd ,W0184-01	Cominum,Industrial Estate Portlaoise, Co.Laois Ireland,Ireland
Within the Country	13 05 03	Yes	30.0 interceptor sludges	D8	M	Weighted	Onsite in Ireland	RLTA Environmental ,W0192-01	Unit 402 Green's Drive Greenogue Business Park, Rathcoole Co. DublinIreland
Within the Country	17 04 01	No	7.0 copper, bronze, brass	R4	M	Weighted	Onsite in Ireland	John Cullen via Multimetal ,Eset15812	Hempston Bessington Co. WicklowIreland
Within the Country	17 04 01	No	1321.0 copper, bronze, brass	R4	M	Weighted	Onsite in Ireland	Hammond Lane Metal Co. ,WPR 98002	Pigeon Hill rd Ringsend Dublin 4,.....Ireland
Within the Country	17 04 02	No	2305.0 aluminium	R4	M	Weighted	Onsite in Ireland	Hammond Lane Metal Co. ,WPR 98002	Pigeon Hill rd Ringsend Dublin 4,.....Ireland
Within the Country	17 04 05	No	3495.0 iron and steel	R4	M	Weighted	Onsite in Ireland	Hammond Lane Metal Co. ,WPR 98002	Pigeon Hill rd Ringsend Dublin 4,.....Ireland
Within the Country	17 04 07	No	1612.0 mixed metals	R4	M	Weighted	Onsite in Ireland	Hammond Lane Metal Co. ,WPR 98002	Pigeon Hill rd Ringsend Dublin 4,.....Ireland
Within the Country	02 06 01	No	materials unsuitable for consumption or 36.0 processing	D5	M	Weighted	Onsite in Ireland	Greenstar Holdings Ltd ,	Ballynagran Residual Landfill Co. Wicklow.....Ireland
Within the Country	02 06 01	No	materials unsuitable for consumption or 17.0 processing	D5	M	Weighted	Onsite in Ireland	Greenstar Holdings Ltd ,W0146-03	Knockharley Landfill Knockharley Kenilworth Co. MeathIreland
Within the Country	15 01 07	No	253.0 glass packaging	R5	M	Weighted	Onsite in Ireland	Rehab Recycle ,WPR 0042	Ballymount Avenue Ballymount Dublin 12,Ireland
Within the Country	15 01 07	No	22.0 glass packaging	R5	M	Weighted	Onsite in Ireland	Rehab Glasco Ltd ,WFP-KE Caragh Road Nass Co. Kildare ,	Unit 4 O'Brienstown Ind. Pk. 08-0957-01Ireland
Within the Country	20 01 08	No	127.0 biodegradable kitchen and canteen waste	R3	M	Weighted	Onsite in Ireland	Dublin Products Ltd. ,P0041	Tomant Lower Dunlavin Co. WicklowIreland
Within the Country	20 03 01	No	2526.0 mixed municipal waste	D1	M	Weighted	Onsite in Ireland	Laois County Council Kyleskeaha Landfill ,W0028LaoisIreland
Within the Country	20 03 01	No	7228.0 mixed municipal waste	D1	M	Weighted	Onsite in Ireland	BORD na Mona Dehid Landfill ,W0201-02KildareIreland
Within the Country	20 03 01	No	2041.0 mixed municipal waste	D15	M	Weighted	Onsite in Ireland	Nurendale Limited T/A Panda Rathdrinah Begaparc Waste Services ,W0140-02	Nawan Meath.....Ireland
Within the Country	20 03 01	No	2248.0 mixed municipal waste	D1	M	Weighted	Onsite in Ireland	Greenstar Holdings Ltd ,	Ballynagran Residual Landfill Co. Wicklow.....Ireland
Within the Country	20 03 01	No	23.0 mixed municipal waste	D1	M	Weighted	Onsite in Ireland	Rampers Landfill,W0066-02	Wicklow,.....Ireland
Within the Country	20 03 01	No	127.0 mixed municipal waste	D15	M	Weighted	Onsite in Ireland	Premier Waste Management Ltd ,WFP-DS-09-0003-01	Unit 6 Premier Business Park, Ballymount D22Ireland
Within the Country	20 03 01	No	88.0 mixed municipal waste	R3	M	Weighted	Onsite in Ireland	Grayhound Recovery & Recycling Ltd ,WPO5-08	Galcone Industrial Estate LimerickIreland

* Based on the 12 months ending on the Date of the Waste Report

[Link to previous years waste data](#)
[Link to previous years waste summary data & percentages change](#)