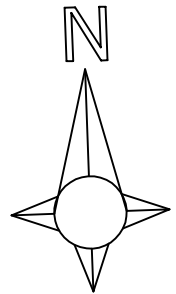
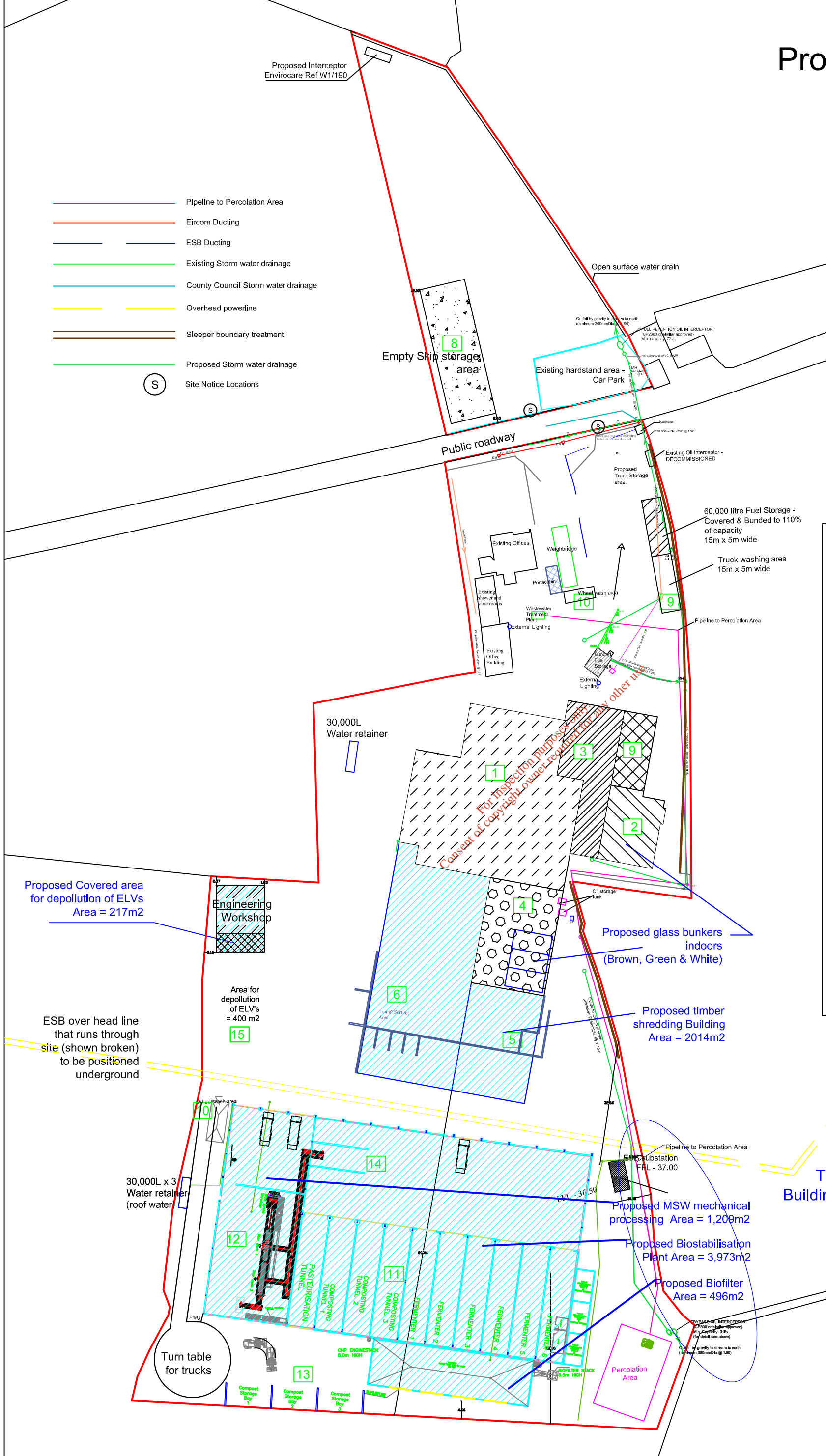


Proposed Layout



- Pipeline to Percolation Area
- Eircom Ducting
- ESB Ducting
- Existing Storm water drainage
- County Council Storm water drainage
- Overhead powerline
- Sleeper boundary treatment
- Proposed Storm water drainage
- S Site Notice Locations

- Site Boundary
- Proposed New Builds for which Planning Permission was granted



- ### Identification of Building Uses Proposed Layout
- 1 Dry Recyclable Processing
 - 2 Proposed general storage area including RDF material (Or alternative glass bunker location)
 - 3 Dry Recyclable Processing - Baling of material
 - 4 Household Bulk waste storage & Drop down skip (& temporary Glass bunker location)
 - 5 Timber Shredding Processing (covered)
 - 6 Construction and Demolition Processing (covered)
 - 7 Truck wash area
 - 8 Skip storage area
 - 9 Non hazardous storage area
 - 10 Wheel wash area
 - 11 CHP Plant
 - 12 Wet Waste Processing
 - 13 Compost storage area
 - 14 Biostabilisation Plant / Storage area for RDF material
 - 15 End of Life Vehicle Unit

Total Biostabilisation Buildings Area = 5,678m²