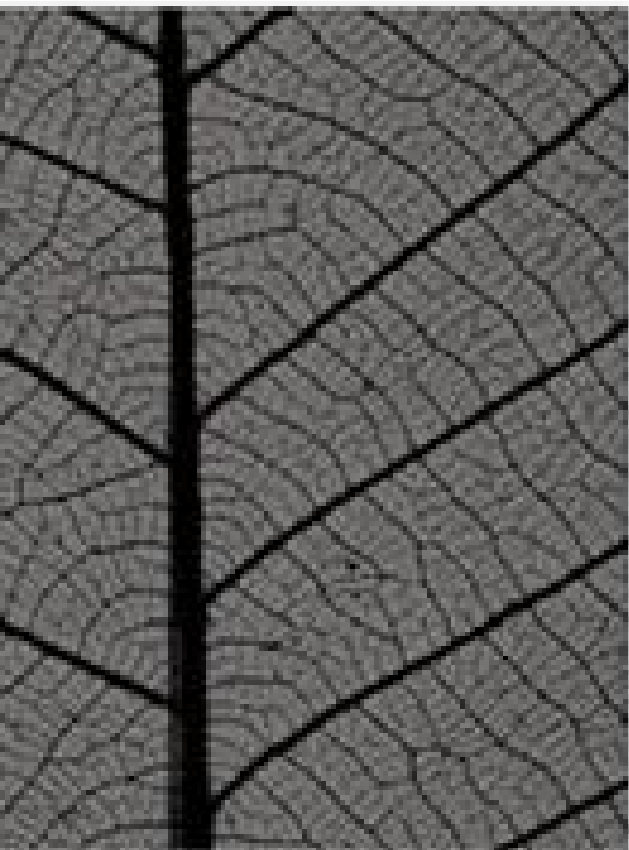
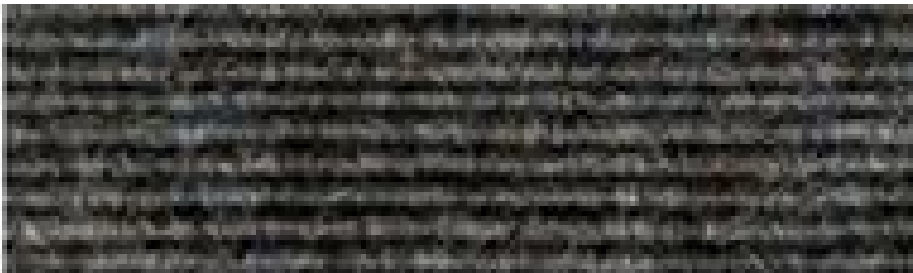


WATERFORD CARPETS LTD
ANNUAL ENVIRONMENTAL REPORT
2010



EXECUTIVE SUMMARY

As Part of the environmental management plan, progress was made in the following areas:

Environmental Management System

Waterford Carpets made a decision to update their Environmental Management System during 2007 with a view to applying for certification to ISO 14001 by the end of 2008. We have been issued ISO 14001 Certificate in October 2008.

Training

Initial environmental training has taken place in November 2008. A new set of Objectives and targets have been established and it is expected to have the environmental training programme finalised and running in 2011.

Waste Reduction

The overall waste per unit of production was reduced during 2010. New Objectives and Targets have been set for incoming years.

Emergency Response

New emergency response procedures have been drawn up in 2008. Implementation and training for relevant employees in these procedures will take place in 2011.

TABLE OF CONTENTS

EXECUTIVE SUMMARY	2
TABLE OF CONTENTS	3
LIST OF TABLES	4
1.0 INTRODUCTION	5
1.1 <i>Company Details</i>	5
1.2 <i>Company Description</i>	6
1.3 <i>Environmental Policy</i>	7
1.4 <i>Company Organisation Chart</i>	8
2.0 SUMMARY INFORMATION	9
2.1 <i>Emissions to Sewer</i>	9
2.2 <i>Emissions to Surface Waters</i>	9
2.3 <i>Emissions to Atmosphere</i>	11
2.4 <i>Waste Management</i>	12
2.4.1 <i>Hazardous Waste</i>	12
2.4.2 <i>Non-Hazardous Waste</i>	12
2.5 <i>Energy Consumption</i>	15
2.6 <i>Water Consumption</i>	16
2.7 <i>Environmental Incidents and Complaints</i>	17
2.8 <i>Agency Monitoring and Enforcement</i>	17
3.0 ENVIRONMENTAL MANAGEMENT	19
3.1 <i>Environmental Objectives and Targets</i>	19
3.2 <i>Environmental Management Programme</i>	21
4.0 LICENCE SPECIFIC REPORTS	24
4.1 <i>Noise Survey</i>	24
4.1.1 <i>Boundary Noise Measurements</i>	24
4.1.2 <i>Noise sensitive Locations</i>	25
5.0 LIST OF APPENDICES	27
5.1 <i>2010 AER / PRTR Returns Worksheet</i>	27

LIST OF TABLES

Table 1. Emissions to Sewer for 2007 – 2009	9
Table 2 Results of Surface Water Monitoring for 2007 – 2009 (SE2)	10
Table 3 Results of Air Emissions Monitoring for 2007 – 2009	11
Table 4 Summary Information on Waste	13
Table 5 Information on Waste Stream	14
Table 6 Water Consumption	16
Table 7 Boundary Noise Monitoring Results (15/04/2009)	24
Table 8 Noise Sensitive Locations Day-time Monitoring Results	25
Table 9 Noise Sensitive Locations Night-time Monitoring Results	25

1.0 INTRODUCTION

This Annual Environmental Report (AER) for Waterford Carpets Ltd presents information for the period from 1st January to the 31st December 2010. The report format follows *EPA Guidance Note for Annual Environmental Report*.

The following items are included in this report:

- Summary of emissions to atmosphere
- Summary of emissions to water
- Waste management report
- Resource consumption summary
- Complaints summary
- Reported incidents summary
- Environmental management programme report and proposal
- Schedule of objectives and targets
- Noise survey results summary
- Water usage report

Waterford Carpets Ltd. has developed its environmental policy as part of its environmental management system. The company has been granted with ISO 14001 Environmental Management Systems Standard Certification in October 2008.

1.1 Company Details

Licence Register Number:	P0510-01
Name:	Waterford Carpets Limited.
Address:	Unit 201 Cork Road Industrial Park, Waterford.
Contact Information:	Mr. Noel Cunningham Managing Director Tel: 051-375941 Email: ncunningham@tretford.ie
	Mr. Bart Zdrojowy Environmental Manager Email: bart@tretford.ie

1.2 Company Description

Waterford Carpets Limited has been in operation since September 1969 in the IDA Industrial Park Waterford. Waterford Carpets Limited manufactures a ribbed heavy contract non-woven carpet. This carpet is manufactured under the trade name **tretford**. The carpet is manufactured from a combination of goat hair, nylon, rayon and wool.

No dyeing or treatment of the carpet takes place on the site at present, nor does the process of moth proofing.

Waterford Carpets Limited operates a continuous production system from 08:00 Monday to 08:00 Saturday on a three-shift rota system. At present Waterford Carpets Limited employs 31 staff.

Waterford Carpets' management and staff recognise the importance of environmental protection as an essential requirement of its operations. Among the stated values of Waterford Carpets are the following:

- That our products will be safe to make and to use.
- We will conserve natural resources and we will continue to invest in better environment protection.
- Waterford Carpets Ltd. will undertake to conduct its business in a manner, which protects the environment of the Customers, Employees and Community in which it operates.

The challenge is to achieve a high quality environment, to this end; the company is committed to continuous improvement - "reduce, reuse & recycle"- at all levels throughout the organisation.

1.3 Environmental Policy

The General Management of Waterford Carpets Limited is committed to pollution prevention and environmental protection at its facility. Waterford Carpets Limited aims to achieve the highest standards of environmental performance in the interest of all our stakeholders, whether they are employees, neighbours, the general public or the natural environment.

Waterford Carpets Limited is committed to complying with all environmental legislation and regulations that may apply to the industry and we will make every effort to comply with the requirements of our Integrated Pollution Control Licence. We will adhere to the principles of responsible care and we strive for continuous improvement in its implementation.

By preparing and implementing an Environmental Management System, which will include policies, objectives and targets, we will administer a continuous programme designed to ensure that the products manufactured at Waterford Carpets Limited will not compromise or damage the environment.

Waterford Carpets Limited will review the Environmental Management System annually. We will also review our environmental aspects register and set Environmental Objectives and targets accordingly.

Waterford Carpets will examine and evaluate the environmental implications of any processes and products, and cleaner technologies will be investigated and utilised where possible. Waste avoidance and reduction plus a waste recycling initiative will be vigorously pursued and implemented.

Waterford Carpets will continuously examine, evaluate and review energy usage in its manufacturing processes and implement an energy conservation programme. We will ensure that adequate operational procedures and emergency plans are implemented and reviewed on an ongoing basis. We will ensure that our employees receive adequate training in relation to our environmental policies and procedures and will review these training needs as may be required.

We are committed to continuous improvement of our Environmental Management System and we will ensure that it shall be integrated at all levels within our organisation. We will strive for ever-improving environmental performance and we will strive to protect the environment for our employees, neighbours and all our other stakeholders.

Noel Cunningham
Managing Director

1.4 Company Organisation Chart

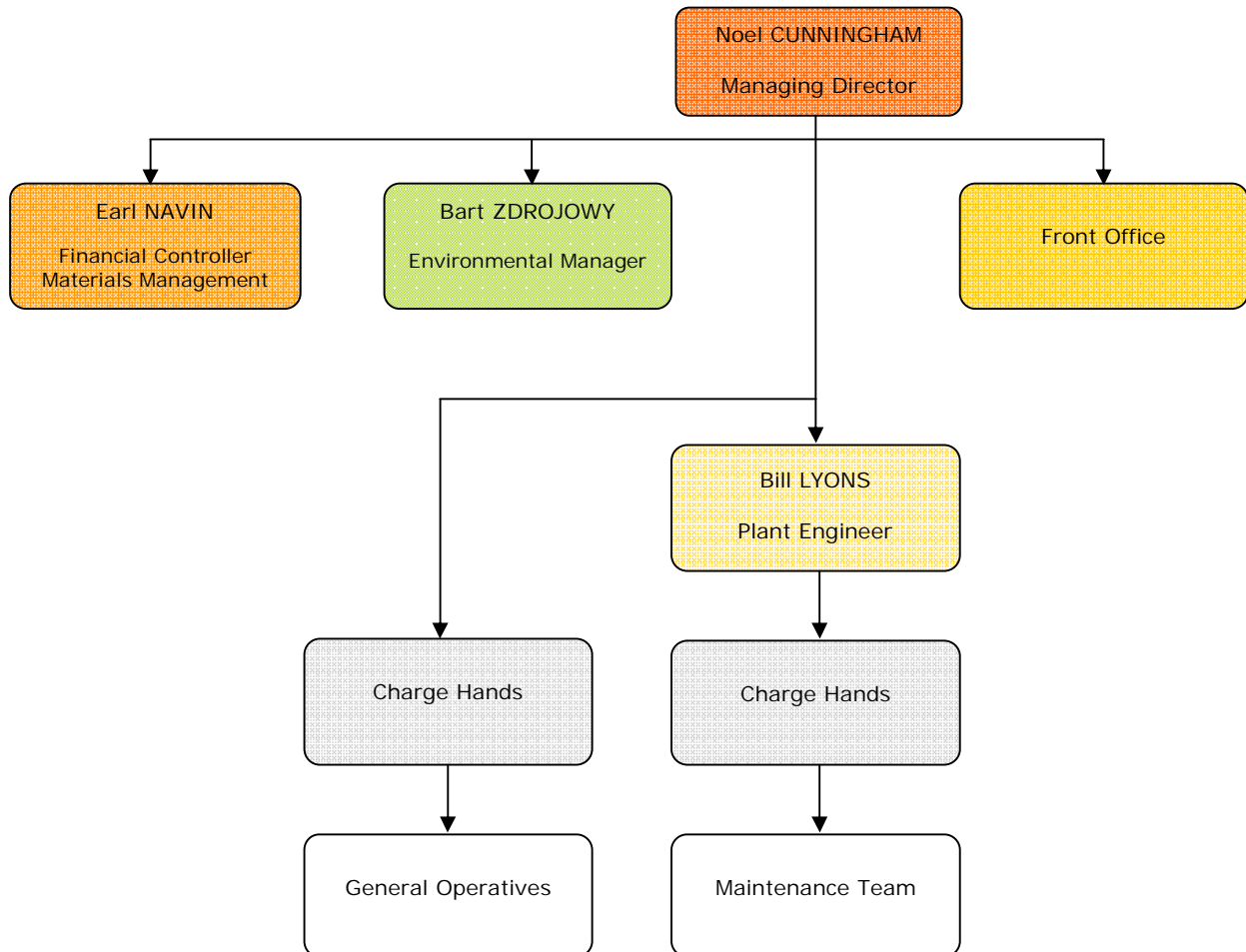


Figure 1. Organisation Chart for Waterford Carpets Ltd.

NB. Environmental Manager has direct environmental responsibilities. All other employees have support roles.

2.0 SUMMARY INFORMATION

This section contains a summary of the information regarding:

- Annual emissions data, including discharges to waters, air emissions, waste management and noise.
- Energy and water usage
- Environmental incidents and complaints

This section of the AER provides summary data on emissions/discharges to various environmental media from the Waterford Carpets site.

2.1 Emissions to Sewer

This section of the AER provides information pertaining to Waterford Carpets emissions to sewer.

Table 1. Emissions to Sewer for 2008 – 2010

Parameter	Emissions (15/12/2010)	Emissions (22/12/2009)	Emissions (18/12/2008)	Limit Value	Monitoring Frequency
Temperature	19°C	15°C	16°C	40°C max	Annually
PH	7.1	7.5	7.6	6-9	Annually
BOD (mg/L)	9	10	<2	60	Annually
COD (mg/L)	95	104	<4	1000	Annually
Suspended Solids (mg/L)	6	5	1	120	Annually

The emissions to sewer data indicate overall compliance with the IPPC emission limit values (ELV's). There were no non-compliances recorded during 2010.

2.2 Emissions to Surface Waters

Waterford Carpets discharges non-process water at discharge points SE 02 (parking lot) in accordance with Schedule 4(i) of the IPPC Licence (Reg. No. P0510-01).

Non-process water consists of:

- Storm water run-off from roofs.
- Storm water run-off from areas including car parks and paved areas.

Surface water discharges at SE 02 are measured on a quarterly basis for pH, COD and conductivity. A visual inspection takes place twice weekly. A summary of the surface water discharge monitoring results is outlined in the table below.

Table 2 Results of Surface Water Monitoring for 2008 – 2010 (SE 02)

Q1		9/03/2010	17/01/2009	12/01/2008	Limit Value
	pH	n/a*	7.5	6.9	6-9
	COD (mg/l)	n/a*	10	24	-
	Conductivity (uS/cm)	n/a*	154	289	-
Q2		25/06/2010	15/04/2009	22/04/2008	Limit Value
	pH	7.2	7.1	7.7	6-9
	COD (mg/l)	21	12	84	-
	Conductivity (uS/cm)	154	161	185	-
Q3		18/08/2010	08/09/2009	19/08/2008	Limit Value
	pH	7.22	7.2	7.4	6-9
	COD (mg/l)	11	18	73	-
	Conductivity (uS/cm)	164	138	203	-
Q4		13/10/2009	22/12/2009	18/12/2008	Limit Value
	pH	7.1	7.1	7.3	6-9
	COD (mg/l)	14	14	7	-
	Conductivity (uS/cm)	103	109	178	-

*While taking water sample for testing an oily contamination was found in water coming up from the industrial estate. EPA, IDA and Waterford City Council were informed and arrived on site. Sample contaminated, not fit for testing.

2.3 Emissions to Atmosphere

The emissions to atmosphere monitoring at Waterford Carpets Ltd. was carried out to fulfil the requirements of Condition 5 and Schedule 1(i) of IPPC licence registration number P0510-01.

Table 3 Results of Air Emissions Monitoring for 2008 – 2010

	A2-01	A2-02	A2-03	A2-04	A2-05	A2-06	Limit Value (mg/Nm ³)
Sampling dates:	08/03/2010 NIU 22/04/2008	08/03/2010 22/12/2009 22/04/2008	15/12/2010 08/09/2009 15/12/2008	NIU 15/04/2009 18/12/2008	18/08/2010 22/12/2009 18/12/2008	13/10/2010	
2010	5.60	8.45	13.16	NIU	1.58	2.14	50
2009	NIU	7.74	4.63	2.11	2.50	NIU	50
2008	8.87	15.25	7.19	8.72	5.73	NIU	50

NIU – Not in use

A test has been carried out at previously unused emission point A2-06 after a carpet dryer has been installed.

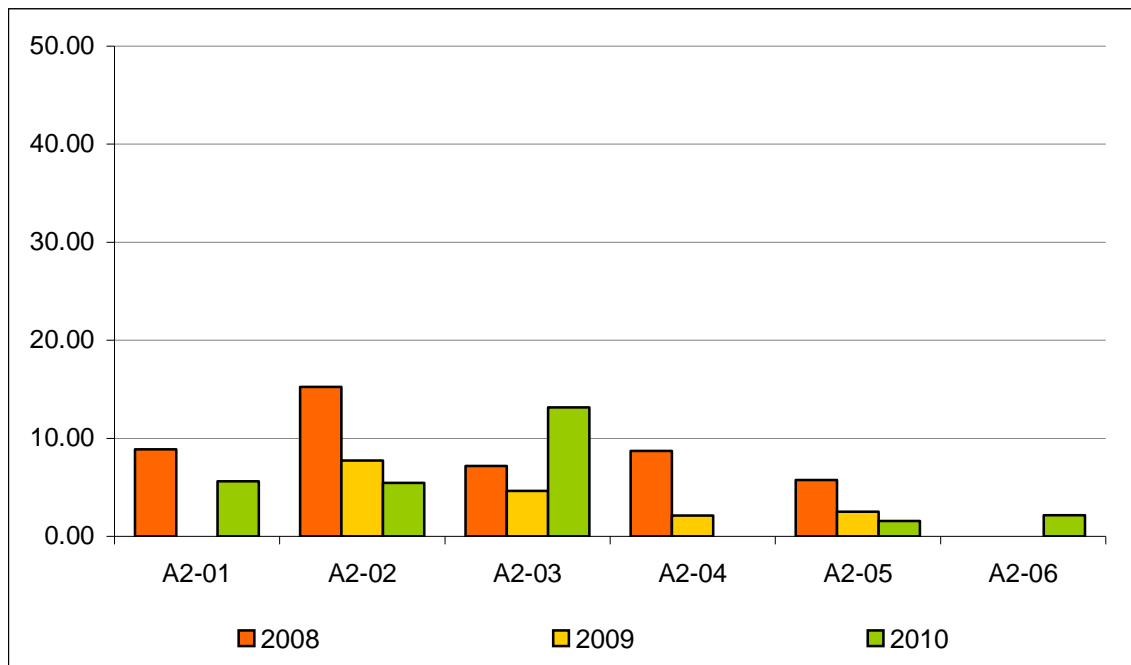


Figure 2 Particulate Emissions 2008-2010. ELV is set on 50mg/Nm3.

2.4 Waste Management

Waterford Carpets Ltd. maintains full details and records of all waste arising on site in accordance with Condition 7 of the IPPC Licence. This section of the Annual Environmental Report (AER) provides comprehensive information regarding these wastes.

A full record, which shall be open to inspection by authorised persons of the Agency at all times, shall be kept by the licensee on matters relating to the waste management operations and practices at this site.

The records shall as a minimum contain details of the following:

- The names of the agent and transporter of the waste.
- The name of the persons responsible for the ultimate disposal/recovery of the waste.
- The ultimate destination of the waste.
- The tonnage and EWC code for the waste materials listed in schedule 3(1) Hazardous Waste for Disposal/Recovery and schedule 3(2) Other Wastes for Disposal/Recovery sent off site for Disposal/Recovery.
- Details of any rejected consignments.
- The tonnage and EWC code for the waste materials listed in schedule 3(1) Hazardous Waste for Disposal/Recovery and schedule 3(2) Other Wastes for Disposal/Recovery recovered/disposed of on site.

A summary of the waste quantities generated at the Waterford Carpets site is included in Table 2.7 A copy of waste management record is attached.

2.4.1 Hazardous Waste

The main source of hazardous waste generated on-site is waste PVC adhesive and fire-retardant salt-water solution. Other than that are MV lamps, fluorescent tubes and batteries. All hazardous wastes generated are stored in designated hazardous waste storage areas.

Indaver processes waste adhesive while Irish Lamp Recycling collects Mercury vapour lamps and fluorescent tubes. There has been one collection of batteries and fluorescent lamps in 2010.

2.4.2 Non-Hazardous Waste

The main disposed non-haz wastes include carpet trimmings and fibres and general (office/canteen) waste. Non-hazardous wastes destined for recovery were: 2. grade carpet, cardboard cores, timber, scrap metal and clear PE wrap.

Table 4 Summary Information on Waste

	2004	2005	2006	2007	2008	2009	2010	Notes
Total quantity of waste (Tonnes)	207.63	201.06	207.03	225.95	265.4	128.6	198.5	
disposed of on-site	-	-	-	-	-	-	-	-
disposed of off-site	164.88	186.99	173.01	170.99	235.3	110.08	166.8	D1
recovered on-site	0.90	3.50	2.50	4.50	2.00	-	-	R0
recovered off-site	41.85	10.56	31.52	50.46	28.1	18.52	31.7	R0, R3, R4
Non-hazardous waste (Tonnes)	207.63	201.06	203.83	225.95	264.1	127.84	198.4	
disposed of on-site	-	-	-	-	-	-	-	-
disposed of off-site	164.88	186.99	169.81	170.99	234	110.08	166.8	D1
recovered on-site	0.90	3.50	2.50	4.50	2	-	-	R0
recovered off-site	41.85	10.56	31.52	50.46	28.1	17.76	31.6	R0, R3, R4
Hazardous waste (Tonnes)	-	-	3.20	-	1.3	0.76	0.03	
disposed of on-site	-	-	-	-	-	-	-	-
disposed of off-site	-	-	-	-	-	-	-	-
recovered on-site	-	-	-	-	-	-	-	-
recovered off-site	-	-	3.20	-	1.3	0.76	0.03	R3, R4

Table 5 Information on Waste Stream

European Waste Catalogue Code	Description of Waste	Quantity (t/year)	Disposal/ Recovery Code	Location of Disposal/ Recovery	Name of Waste Disposal/ Recovery Contractor				
Hazardous:									
20 01 21* 20 01 35*	Fluorescent Tubes, Batteries	0.03 ^a	R4	(b) Athy, Co Kildare	Irish Lamp Recycling				
Non hazardous:									
20 03 01	Carpet Trimmings	149.22	D1	(b) MRF WATERFORD (GES)	Greenstar				
	Mixed Municipal Waste	14.82							
	Carpet Fibres	2.81							
20 01 01	Cardboard Cores	4.38	R3			(b) Naas, Co. Kildare	AES / Bord na Mona		
	Office paper	1.95							
20 01 38	Timber	5.35						(b) Annacotty, Co. Limerick	ISP Packaging Ltd
15 01 02	Plastic	1.28							
20 02 01	Jute	2.25							
15 01 02	Clear Plastic Wrap	0.9							
08 03 18	Toners	0.06 ^b							
08 03 99	Ink cartridges								
20 01 36	Mobile phones								
04 02 22	2 nd Grade Carpet	8.98		R0	(c) Chernobyl, Ukraine				
15 01 04	Scrap Metal	6.46	R4	(b) Enniscorthy	Molloy Metal Recycling Ltd.				

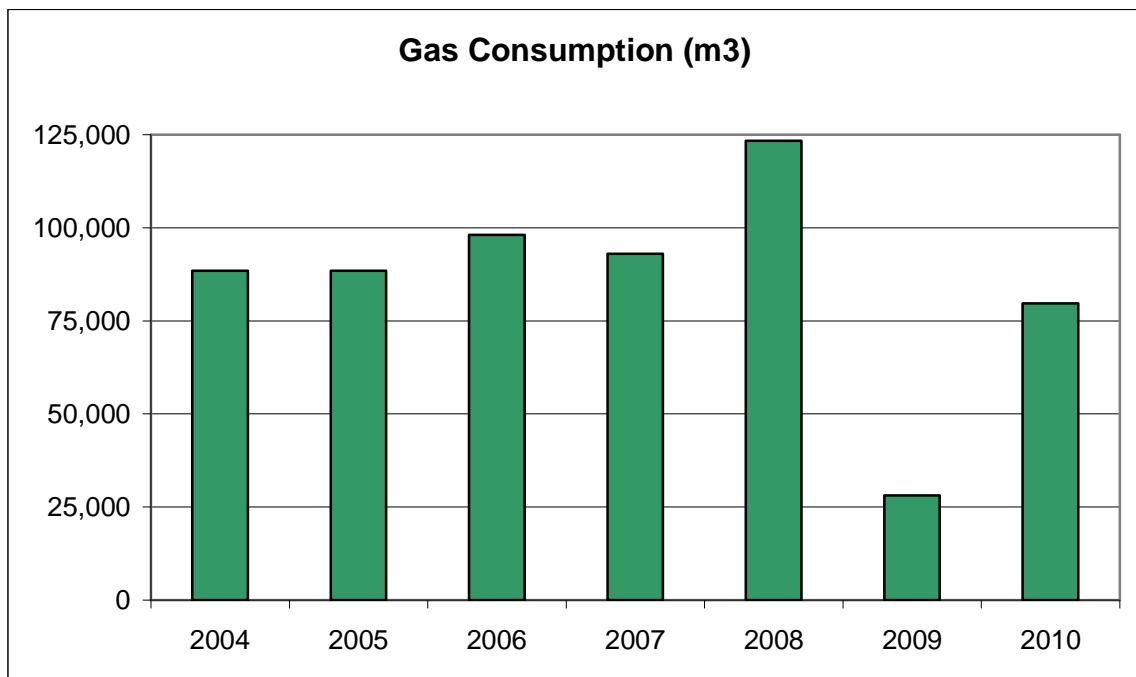
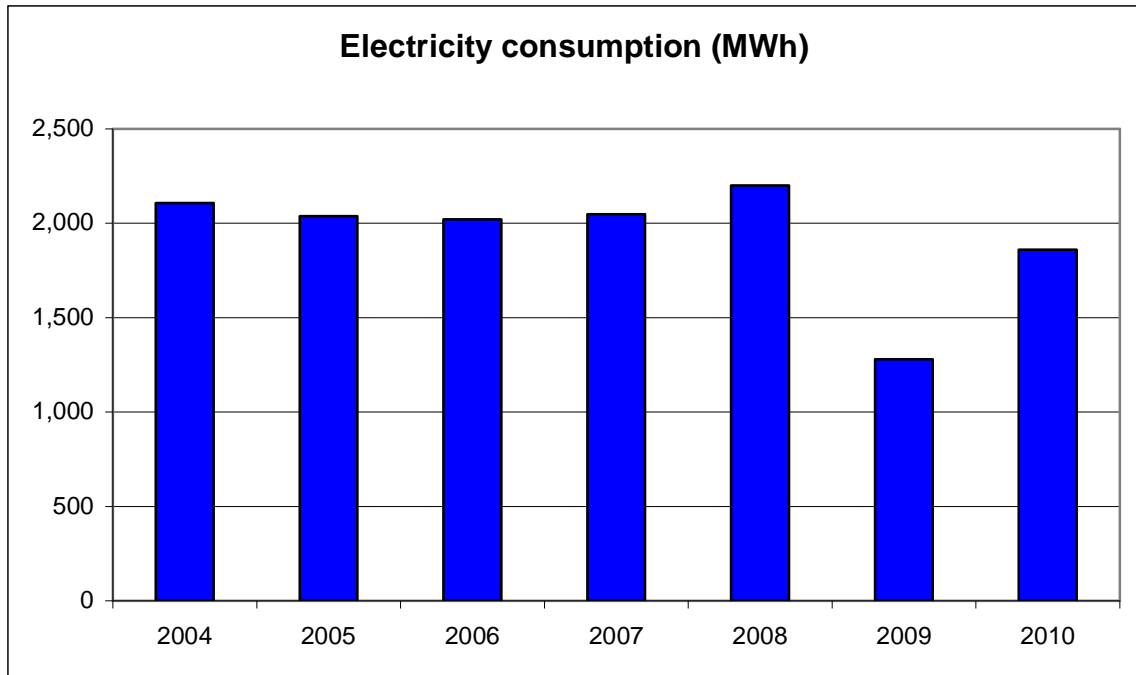
(a) On-site; (b) Off-site (Ireland); (c) Off-site (abroad)

^a 16kg batteries, 14.5kg MV lamps/ FL tubes, Irish Lamp Recycling, Collection Permit: WPF-KE-08-0348-01

^b 61 cartridges, 2 mobile phones, Recycling Appeal, Cert: VEN0383029 30/11/10

2.5 Energy Consumption

	2004	2005	2006	2007	2008	2009	2010
Electricity (MWh)	2,107.54	2,037.33	2,020.44	2,048.88	2,201.23	1,279.73	1,859.29
Gas (m ³)	88,468	88,468	98,077	92,987	123,264	28,122	79,714



2.6 Water Consumption

Table 6 Water Consumption

	2004	2005	2006	2007	2008	2009	2010
Cubic m	1,364	1,314	1,605	1,668	1,427	1,253	2,530 ^c

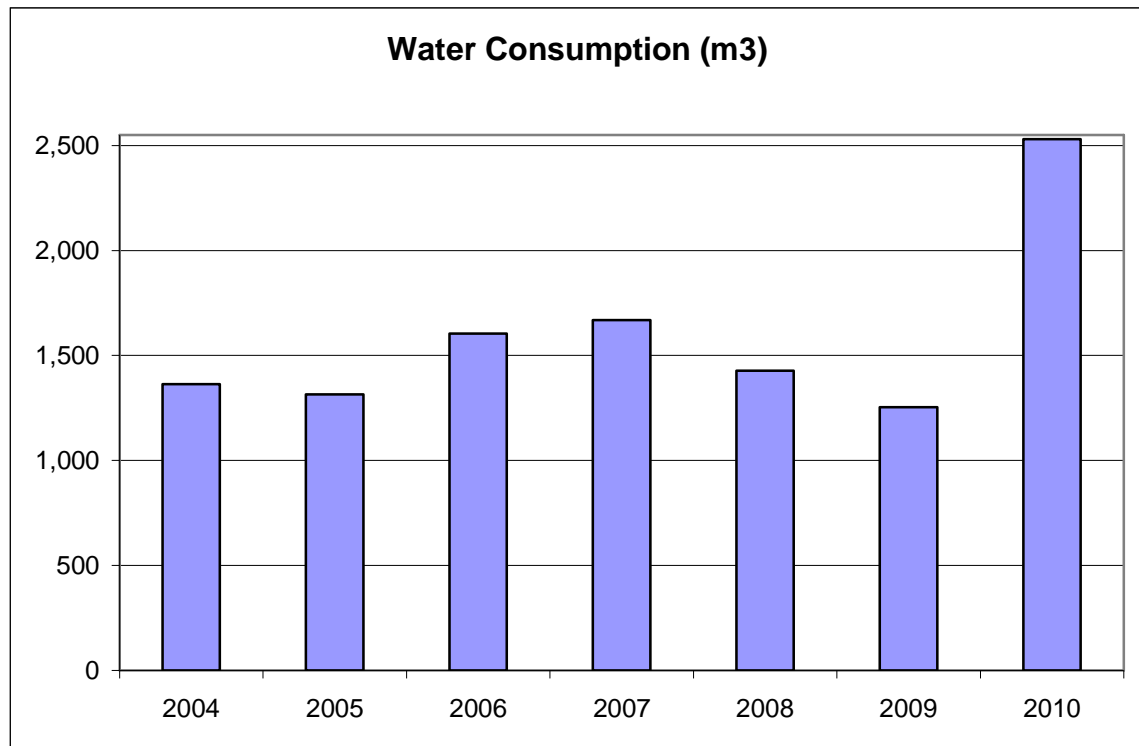


Figure 3 Water Consumption (m3)

^c Billing period: 28 Jan – 16 Dec 2010; Water leak due to corroded water tank; tank replaced.

2.7 Environmental Incidents and Complaints

There was a water leak in June/July due to corroded water tank that affected reported water usage for 2010. The old tank has been replaced with a new plastic tank.

Earlier, in March 2010, kerosene contamination was discovered in the main storm drain outside Waterford Carpets site while taking samples for quarterly survey. EPA, IDA and Waterford City Council were informed and arrived on site. It has been confirmed Waterford Carpets Ltd was not the source of contamination.

In early April 2010 Waterford City Council staff arrived on site in order to check for possible source of green dye (a fridge coolant) that was discovered in storm water drains. Waterford Carpets Ltd was found not to be a source of contamination.

Another complaint on diesel contamination found in storm water outlet to Lisduggan Stream, located within boundaries of our site arrived late evening on 4th August. Mr Noel Kiely, Senior Executive Engineer at Waterford City Council when informed the next morning advised us the pollution had been investigated and source located outside Waterford Carpets.

As a result of Watermain Assessment at IDA Waterford industrial Estate (September 2010) a leaking fire hydrant bayonet cap has been replaced.

2.8 Agency Monitoring and Enforcement

There one visit by the agency to Waterford Carpets Ltd. during 2010.

Inspection Reference Number: P0510-01/nc06eok.doc

This visit took place on the 15th April 2010 and was an unannounced visit by Eimear O'Keefe of the EPA. Waterford Carpets Ltd was found to be non compliant with two conditions of their IPPC licence.

1. Annual Environmental Report

Condition 2.8.2

- The AER for 2009 had not been submitted to the Agency on the date of the site inspection. The licensee is required to submit the AER by 31st March each year.

Corrective Action:

- Annual Environmental Report for 2009 has been posted to EPA headquarters address on 21st April 2010.

2. Training

Condition 2.6.1

- Training of staff in environmental awareness has not been completed to date. A similar observation was noted on the previous site inspection report (doc. ref. P0510-01/sm07djm).

Corrective Action:

- Staff training was scheduled to be completed by the end of December 2010, later postponed due to lay-offs.

There were three inspection observations also noted which did not constitute non-compliances but should be addressed.

1. Underground Tank & Pipeline Assessment

- The licensee stated that the underground tank and pipeline assessment was completed in June 2009. However, no record of the underground tank and pipeline assessment was available for inspection.

Corrective Action:

- A written confirmation on drain cleaning, debris removing & CCTV inspection issued by Pat Morrissey Drain Cleaning Contractor forms part of our AER 2009, delivered to EPA HQ on 22nd April 2010.

2. Emergency Response Procedure

- The Emergency Response Procedure does not include a procedure to control spills and firewater. A similar observation was noted on the previous site inspection report (doc. ref. P0510-01/sm07djm).

Corrective Action:

- Spills and Firewater Control procedure is to be included in our Emergency Response Procedure at the next revision date.

3. New Process

- Mr. Zdrojowy stated that there was a new process coming on line in the next couple of months. This process involves the fireproofing of carpets. The emission point A2-6 will be used as the emission point for the dryers associated with the process. Emission point A2-6 was previously used as an emission point for curing ovens.

Corrective Action:

- Submit details of the new process and the emissions associated with the process.

A new process involves fireproofing of a new line of product which is a wall covering, a lite version of Tretford regular carpet. A ready product is to be dipped in a bath of a low concentration solution of flame retardant (ca. 3-10% polycomplex ammonium phosphate salt) and then dried at ca. 60-80°C to evaporate water. The process (salt concentration and drying temperature) is still in development stage and values given are approximate only. No odours were noticed from the stack (A2-06) during trial and measured particulate emissions are below the limit and lower than ones from curing ovens.

3.0 ENVIRONMENTAL MANAGEMENT

Waterford Carpets Ltd. operate ISO 14001 certified Environmental Management System (EMS). Therefore the company has documented and implemented an EMS and complies with the requirements of Condition 2.2 of the IPPC Licence (Reg. P0510-01).

A schedule of Environmental Objectives and Targets has been developed by Waterford Carpets in accordance with Condition 2.2.2 of the IPPC Licence. These have been included in the Environmental Management Programme, which designates responsibility for the various objectives and targets. The EMP also outlines the means by which the Objectives and Targets may be achieved and the timescales involved in accordance with Condition 2.2.2.2 of the IPPC Licence. The EMP is revised and updated as required.

Programmes and procedures are in place to ensure effective management and control.

3.1 Environmental Objectives and Targets

Objective

Objective Number	01
Objective Description	Training
Significant Impact	N/a
Environmental Policy Aims	Adequate level of training for Employees

Target No.	Targets	Proposed Deadline
EO1.01	Complete training on Environmental Awareness with relevant employees	31 st December 2011
EO1.02	Conduct training on Emergency Response with Relevant employees	31 st December 2011

EMP Reference	Responsibility	People Resources Needed	Financial Resources Needed
EMP 1	Noel Cunningham Bart Zdrojowy	Yes	Yes

Objective

Objective Number	02
Objective Description	Energy
Significant Impact	Energy Usage, GHG emissions
Environmental Policy Aims	Energy Conservation

Target No.	Targets	Proposed Deadline
EO2.01	Reduce energy usage by 0.5% of 2010 figures	31 st December 2011
EO2.02	Monitor and track energy usage on daily basis	31 st December 2011

EMP Reference	Responsibility	People Resources Needed	Financial Resources Needed
EMP 02	Noel Cunningham Bill Lyons Bart Zdrojowy	Yes	Yes

Objective

Objective Number	03
Objective Description	Reduce Non-Hazardous Waste
Significant Impact	Landfilled waste, collection + landfill tax charges,
Environmental Policy Aims	Waste Avoidance and Waste Reduction

Target No.	Targets	Proposed Deadline
EO3.01	Reduce Non-Hazardous Waste generation and disposal by 1% on 2010 figures	31 st December 2011

EMP Reference	Responsibility	People Resources Needed	Financial Resources Needed
EMP 03	Bart Zdrojowy	Yes	Yes

3.2 Environmental Management Programme

Objective: Training

Responsibility: Noel Cunningham

Coordinator: Bart Zdrojowy

Significant Impact: Training

Target: Conduct environmental awareness training with all relevant employees
 Conduct training on Emergency Response with Relevant employees

Policy Aim:

01. Training		Responsibility	2010				2011				Comments
			Q1	Q2	Q3	Q4	Q1	Q2	Q3	Q4	
1.	Conduct Environmental Awareness Training with all relevant employees	Bart Zdrojowy									Staff lay-offs by end 2010 put training on hold
2.	Conduct training on Emergency Response with relevant employees	Bart Zdrojowy									Staff lay-offs by end 2010 put training on hold

Objective: Energy

Responsibility: Noel Cunningham

Coordinator: Bart Zdrojowy

Significant Impact: Energy Conservation

Target: Reduce energy usage by 0.5% on 2010 figures
Monitor and track energy usage on daily basis

Policy Aim: Energy Reduction

02. Energy		Responsibility	2010				2011				Comments	
			Q1	Q2	Q3	Q4	Q1	Q2	Q3	Q4		
1.	Review Energy Audit and implement recommendations where necessary	Noel Cunningham										Recommendations not viable financially at present
2.	Monitor and track energy usage on daily basis	Bart Zdrojowy										Monitoring equipment installed, connection setup required

Objective: Reduce Non-Hazardous Waste

Responsibility: Noel Cunningham

Coordinator: Bart Zdrojowy

Significant Impact: Non-Hazardous Waste

Target: Reduce Non-Hazardous Waste generation and disposal by 1% on 2010 figures

Policy Aim: Waste avoidance and waste reduction

03. Reduce Non-Hazardous Waste		Responsibility	2010				2011				Comments
			Q1	Q2	Q3	Q4	Q1	Q2	Q3	Q4	
1.	Reduce Non-Hazardous Waste generation and disposal by 1% on 2010 figures	Bart Zdrojowy									New machine setup required for bigger savings. Waste production monitored
2.	Investigate jute composting option	Bart Zdrojowy									Composting trial went OK. Amounts of jute generated not big enough for contractors to collect

4.0 LICENCE SPECIFIC REPORTS

4.1 Noise Survey

4.1.1 Boundary Noise Measurements

Table 7 Boundary Noise Monitoring Results (18/05/2010)

Boundary Noise Day-time Results							
Location No.	Location description	Measurement Period (Min.)	Sampling Time	L _{eq} dB(A)	L ₁₀ dB(A)	L ₉₀ dB(A)	Comments
1	South West Corner Across from workshop	15	9:11	55	58	55	Traffic on the Industrial Estate which was heavy and clearly audible at this location. A compressor on the Waterford Carpets site which was operating in this area during the measurement period. Birds chirping.
2	West Face – Across from glue mixing	15	9:31	55	56	51	Traffic on the Industrial Estate which was heavy and clearly audible. There was no audible noise from the Waterford Carpets facility. The roller shutter door to the Glue Mixing Area was closed during the measurement period.
3	North West Corner	15	9:50	53	55	49	Traffic on the Industrial Estate. No audible noise from the factory.
4	North Face	15	10:06	49	51	46	Traffic on the Industrial Estate was clearly audible at this location. No audible noise from Waterford Carpets facility.
5	North East Corner	15	10:28	50	51	48	Traffic on the Industrial Estate and on Lismore Park Road. No audible noise from Waterford Carpets Ltd.
6	East Face – across from Loading Bay	15	10:48	51	52	49	The predominant source of noise was traffic on the Industrial Estate.
7	South east Corner – Main Entrance	15	11:05	53	57	49	Traffic on the Industrial Estate. No audible noise from Waterford Carpets facility.
8	South Face	15	11:23	61	62	59	The predominant source of noise was traffic on the Industrial Estate and the compressor which was operating in this area.

Results marked red exceeds the specified day-time limit of 55 dB(A)

4.1.2 Noise sensitive Locations

Table 8 Noise Sensitive Locations Day-time Monitoring Results

Noise Sensitive Location Day-time Results							
Location No.	Location description	Measurement Period (Min.)	Sampling Time	L _{eq} dB(A)	L ₁₀ dB(A)	L ₉₀ dB(A)	Comments
9	No. 10 Lismore Park	15	11:47	54	54	49	The predominant source of noise was traffic on Lismore Park Road, which was relatively light during the measurement period. There was no audible noise from the Waterford Carpets facility.
10	No. 95 Lismore Park	15	12:07	51	53	50	The predominant source of noise was traffic on Lismore Park Road. No audible noise from Waterford Carpets facility.
11	No. 112 Lismore Park	15	12:26	53	57	50	The predominant source of noise was traffic on Lismore Park Road. No audible noise from Waterford Carpets facility.
12	No. 123 Lismore Park	15	12:47	52	57	49	The predominant source of noise was traffic on Lismore Park Road. No audible noise from Waterford Carpets facility.

Results marked **red** exceeds the specified day-time limit of 55 dB(A)

Table 9 Noise Sensitive Locations Night-time Monitoring Results

Noise Sensitive Location Night-time Results							
Location No.	Location description	Measurement Period (Min.)	Sampling Time	L _{eq} dB(A)	L ₁₀ dB(A)	L ₉₀ dB(A)	Comments
9	No. 10 Lismore Park	15	23:15	43	46	41	No audible noise from Waterford Carpets facility. A number of vehicles passed close to the sound level meter during the monitoring period.
10	No. 95 Lismore Park	15	23:34	43	45	41	No audible noise from factory. A number of vehicles passed close to the sound level meter during the monitoring period.
11	No. 112 Lismore Park	15	00:03	42	42	40	No audible noise from Waterford Carpets facility.
12	No. 123 Lismore Park	15	00:24	43	44	39	No audible noise from factory.

Results marked **red** exceed the specified night-time limit of 45 dB(A)

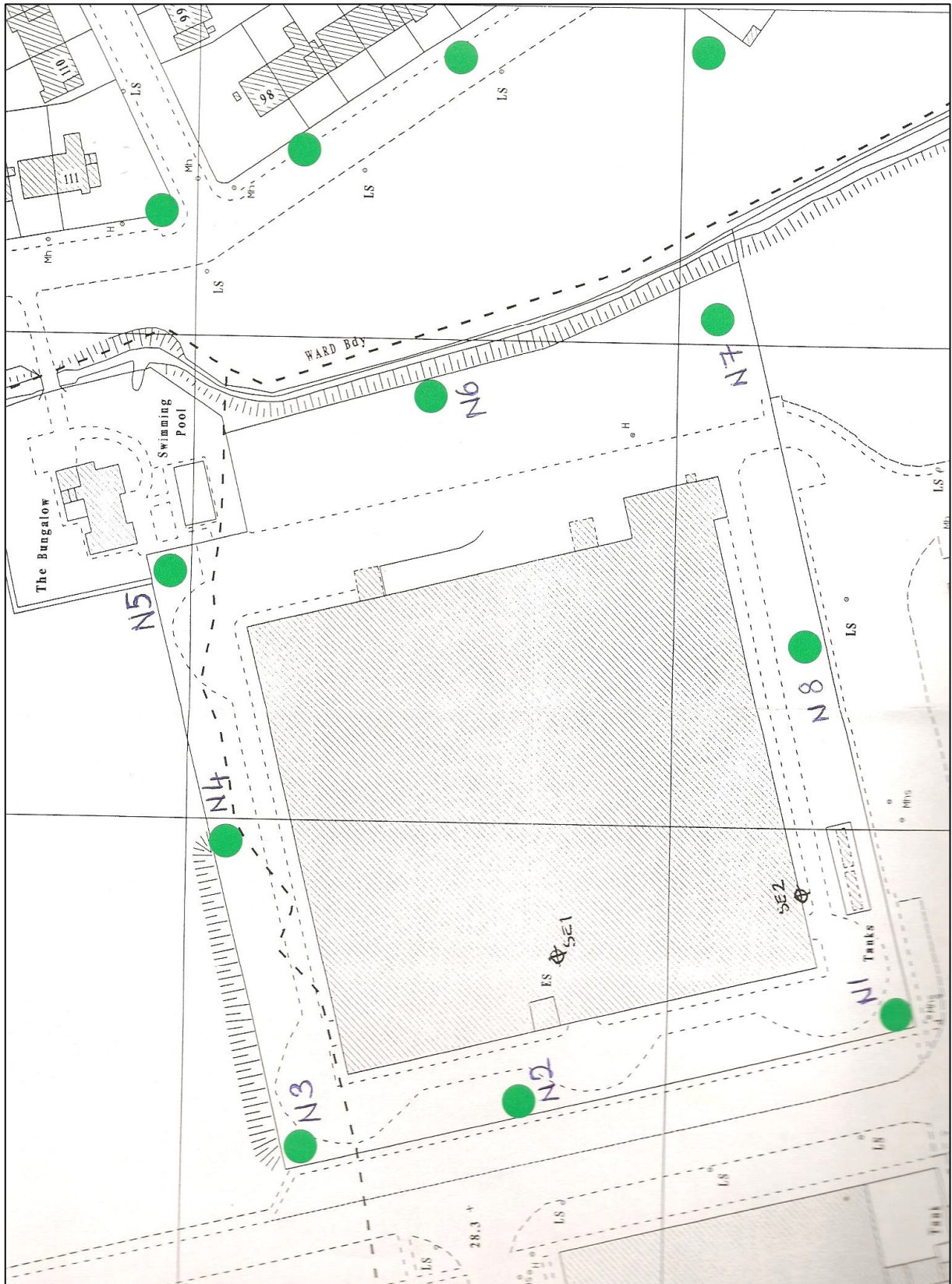


Figure 4 Location of noise monitoring points

5.0 LIST OF APPENDICES

5.1 2010 AER / PRTR Returns Worksheet



Environmental Protection Agency

| PRTR# : P0510 | Facility Name : Waterford Carpets Limited | Filename : P0510_2010.xls | Return Year : 2010 |

[Guidance to completing the PRTR workbook](#)

AER Returns Workbook

Version 1.1.11

REFERENCE YEAR	2010
-----------------------	------

1. FACILITY IDENTIFICATION

Parent Company Name	Waterford Carpets Limited
Facility Name	Waterford Carpets Limited
PRTR Identification Number	P0510
Licence Number	P0510-01

Waste or IPPC Classes of Activity

No.	class_name
8.5.2	The dyeing, treatment or finishing (including moth-proofing and fireproofing) of fibres or textiles (including carpet) where the capacity exceeds 1 tonne per day of fibre, yarn or textile material, not included in paragraph 8.5.1.

Address 1	Unit 201
Address 2	IDA Industrial Park
Address 3	Cork Road
Address 4	Waterford
Country	Ireland
Coordinates of Location	-7.14475 52.2479
River Basin District	IESE
NACE Code	1393
Main Economic Activity	Manufacture of carpets and rugs
AER Returns Contact Name	Bart Zdrojowy
AER Returns Contact Email Address	bart@tretford.ie
AER Returns Contact Position	Environmental Manager
AER Returns Contact Telephone Number	051 - 375941
AER Returns Contact Mobile Phone Number	
AER Returns Contact Fax Number	051 - 379607
Production Volume	0.0
Production Volume Units	
Number of Installations	0
Number of Operating Hours in Year	0
Number of Employees	0
User Feedback/Comments	
Web Address	

2. PRTR CLASS ACTIVITIES

Activity Number	Activity Name
50.1	General

3. SOLVENTS REGULATIONS (S.I. No. 543 of 2002)

Is it applicable?	No
Have you been granted an exemption ?	
If applicable which activity class applies (as per Schedule 2 of the regulations) ?	
Is the reduction scheme compliance route being used ?	

4.1 RELEASES TO AIR

[Link to previous years emissions data](#)

[PRTR# : P0510 | Facility Name : Waterford Carpets Limited | Filename : P0510_2010.xls | Return Year : 2010]

31/03/2011 16:25

SECTION A : SECTOR SPECIFIC PRTR POLLUTANTS

RELEASES TO AIR		METHOD			Please enter all quantities in this section in KGs			
POLLUTANT		Method Used			QUANTITY			
No. Annex II	Name	M/C/E	Method Code	Designation or Description	Emission Point 1	T (Total) KG/Year	A (Accidental) KG/Year	F (Fugitive) KG/Year
					0.0	0.0	0.0	0.0

* Select a row by double-clicking on the Pollutant Name (Column B) then click the delete button

SECTION B : REMAINING PRTR POLLUTANTS

RELEASES TO AIR		METHOD			Please enter all quantities in this section in KGs								
POLLUTANT		Method Used			QUANTITY								
No. Annex II	Name	M/C/E	Method Code	Designation or Description	A2-01	A2-02	A2-03	A2-04 (not in use)	A2-05	A2-06 (trial)	T (Total) KG/Year	A (Accidental) KG/Year	F (Fugitive) KG/Year
86	Particulate matter (PM10)	C	MAB	(EN 13284-1:2002 Determination of Low Range Mass Concentration). Annual 30-min monitoring result (kg/hr) times 45 weeks times 120 hours times 75% to include heating up, stoppages, machine cleaning times 50% to reflect the fact up to a half of machine park was running at the same time.	130.6125	124.1325	282.0825	0.0	36.45	0.36	573.6375	0.0	0.0

* Select a row by double-clicking on the Pollutant Name (Column B) then click the delete button

SECTION C : REMAINING POLLUTANT EMISSIONS (As required in your Licence)

RELEASES TO AIR		METHOD			Please enter all quantities in this section in KGs			
POLLUTANT		Method Used			QUANTITY			
Pollutant No.	Name	M/C/E	Method Code	Designation or Description	Emission Point 1	T (Total) KG/Year	A (Accidental) KG/Year	F (Fugitive) KG/Year
					0.0	0.0	0.0	0.0

* Select a row by double-clicking on the Pollutant Name (Column B) then click the delete button

Additional Data Requested from Landfill operators

For the purposes of the National Inventory on Greenhouse Gases, landfill operators are requested to provide summary data on landfill gas (Methane) flared or utilised on their facilities to accompany the figures for total methane generated. Operators should only report their Net methane (CH4) emission to the environment under T (total) KG/yr for Section A: Sector specific PRTR pollutants above. Please complete the table below:

Landfill: Please enter summary data on the quantities of methane flared and / or utilised	Waterford Carpets Limited				Facility Total Capacity m3 per hour
	T (Total) kg/Year	M/C/E	Method Code	Designation or Description	
Total estimated methane generation (as per site model)	0.0				N/A
Methane flared	0.0				0.0 (Total Flaring Capacity)
Methane utilised in engine/s	0.0				0.0 (Total Utilising Capacity)
Net methane emission (as reported in Section A above)	0.0				N/A

4.3 RELEASES TO WASTEWATER OR SEWER

[Link to previous years emissions data](#)

| PRTR# : P0510 | Facility Name : Waterford Carpets Limited | Filename : P0510_2010.xls | Return Year

31/03/2011 16:36

SECTION A : PRTR POLLUTANTS

OFFSITE TRANSFER OF POLLUTANTS DESTINED FOR WASTE-WATER TREATMENT OR SEWER					Please enter all quantities in this section in KGs			
POLLUTANT		METHOD			QUANTITY			
No. Annex II	Name	M/C/E	Method Used		Emission Point 1	T (Total) KG/Year	A (Accidental) KG/Year	F (Fugitive) KG/Year
					0.0	0.0	0.0	0.0

* Select a row by double-clicking on the Pollutant Name (Column B) then click the delete button

SECTION B : REMAINING POLLUTANT EMISSIONS (as required in your Licence)

OFFSITE TRANSFER OF POLLUTANTS DESTINED FOR WASTE-WATER TREATMENT OR SEWER					Please enter all quantities in this section in KGs			
POLLUTANT		METHOD			QUANTITY			
Pollutant No.	Name	M/C/E	Method Used		Compressor outlet Emission Point 1	T (Total) KG/Year	A (Accidental) KG/Year	F (Fugitive) KG/Year
303	BOD	C	MAB	10*6 (mg to kg)	0.01944	0.01944	0.0	0.0
306	COD	C	MAB	As above	0.2052	0.2052	0.0	0.0
240	Suspended Solids	C	MAB	As above	0.01296	0.01296	0.0	0.0

* Select a row by double-clicking on the Pollutant Name (Column B) then click the delete button

5. ONSITE TREATMENT & OFFSITE TRANSFERS OF WASTE

| PRTR# : P0510 | Facility Name : Waterford Carpets Limited | Filename : P0510_2010.xls | Return Year : 2010 |

31/03/2011 17:10

Please enter all quantities on this sheet in Tonnes

3

Transfer Destination	European Waste Code	Hazardous	Quantity (Tonnes per Year)	Description of Waste	Waste Treatment Operation	Method Used		Location of Treatment	Haz Waste : Name and Licence/Permit No of Next Destination Facility Non Haz Waste : Name and Licence/Permit No of Recover/Disposer	Haz Waste : Address of Next Destination Facility Non Haz Waste : Address of Recover/Disposer	Name and License / Permit No. and Address of Final Recoverer / Disposer (HAZARDOUS WASTE ONLY)	Actual Address of Final Destination i.e. Final Recovery / Disposal Site (HAZARDOUS WASTE ONLY)
						M/C/E	Method Used					
Within the Country	20 01 21	Yes	0.0145	fluorescent tubes and other mercury-containing waste	R4	M	Weighed	Offsite in Ireland	Irish Lamp Recycling,WFP-KE-08-0348-01	Woodstock Ind Est Kilkenny Rd,,Athy Co Kildare,,Ireland	Irish Lamp Recycling,WFP-KE-08-0348-01,,,,,,Ireland	,,,,,,Ireland
Within the Country	20 01 35	Yes	0.016	discarded electrical and electronic equipment other than those mentioned in 20 01 21 and 20 01 23 containing hazardous components	R4	M	Weighed	Offsite in Ireland	Irish Lamp Recycling,WFP-KE-08-0348-01	Woodstock Ind Est Kilkenny Rd,,Athy Co Kildare,,Ireland	Irish Lamp Recycling,WFP-KE-08-0348-01,,,,,,Ireland	,,,,,,Ireland
Within the Country	20 03 01	No	166.85	mixed municipal waste	D1	M	Volume Calculation	Offsite in Ireland	Greenstar,WCP-DC-08-1120-01	Unit 14a 6 Crossroads Business Park,,Carriganard Waterford Co. Waterford,,Ireland		
Within the Country	20 01 01	No	6.33	paper and cardboard	R3	M	Weighed	Offsite in Ireland	Greenstar,WCP-DC-08-1120-01	Unit 14a 6 Crossroads Business Park,,Carriganard Waterford Co. Waterford,,Ireland		
Within the Country	20 01 38	No	5.35	wood other than that mentioned in 20 01 37	R3	M	Weighed	Offsite in Ireland	Greenstar,WCP-DC-08-1120-01	Unit 14a 6 Crossroads Business Park,,Carriganard Waterford Co. Waterford,,Ireland		
Within the Country	15 01 02	No	1.28	plastic packaging	R5	M	Weighed	Offsite in Ireland	Greenstar,WCP-DC-08-1120-01	Unit 14a 6 Crossroads Business Park,,Carriganard Waterford Co. Waterford,,Ireland		
Within the Country	20 02 01	No	2.25	biodegradable waste	R3	M	Weighed	Offsite in Ireland	AES,WCP-OY-08-601-01	Unit 1 Monread Commercial Park,Monread Road,Naas Co Kildare,,Ireland		
Within the Country	08 03 18	No	0.06	waste printing toner other than those mentioned in 08 03 17	R5	M	Volume Calculation	Offsite in Ireland	Redeem Ltd,WCP-DC-091187-01	Unit 19 Ashbourne Ind Est,,Ashbourne Co. Meath,,Ireland		
Within the Country	15 01 04	No	6.46	metallic packaging	R4	M	Weighed	Offsite in Ireland	Molloy Metal Recycling,WP/08/14	,,Ennincorthy,,Ireland		

* Select a row by double-clicking the Description of Waste then click the delete button