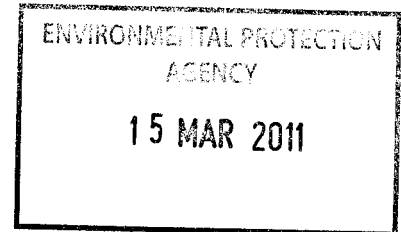
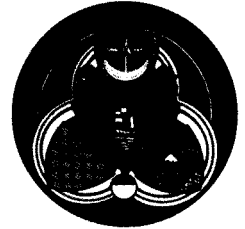


Comhairle Contae Chorcaí Cork County Council

Halla an Chontae,
Corcaigh, Éire.
Fón: (021) 4276891 • Faics: (021) 4276321
Suíomh Gréasáin: www.corkcoco.ie
County Hall,
Cork, Ireland.
Tel: (021) 4276891 • Fax: (021) 4276321
Web: www.corkcoco.ie



Administration,
Environmental Licensing Programme,
Office of Climate, Licensing & Resource Use,
Environmental Protection Agency,
Headquarters,
PO Box 3000,
Johnstown Castle Estate,
County Wexford.

10 March 2011

Re: Ballinspittle and Bandon IDA Laragh Agglomeration (Register No. A0362-01)
Regulation 25(c)(ii) Further Information Response

Dear Sir/Madam,

With reference to your letter of the 14th of December 2010, please find the following attached:

- 1 Original of the Bandon IDA Laragh Regulation 25 Further Information Response
- 1 Copy of the Bandon IDA Laragh Regulation 25 Further Information Response
- 1 CDROM with the Further Information Response in PDF Format

Yours faithfully,


Noel O'Keeffe
County Engineer & Director of Water Services



Bandon IDA Laragh Regulation 25 Further Information Response

Question 1 Assess the likelihood of significant effect of the waste water discharges from the above agglomerations on the relevant European sites by referring to Circular L8/08 “Water Services Investment and Rural Water Programmes – Protection of Natural Heritage and National Monuments” issued by the Department of Heritage and Local Government. In particular, the flow diagram in Appendix 1 should be completed and the results of each section recorded. Provide details of the results of this assessment within one month of the date of this notice. If significant effects are likely then and appropriate assessment must be carried out and a report of this assessment forwarded to the Agency within one month of the date of this notice. You are advised to provide the requested information in accordance with the “Note on Appropriate Assessments for the purposes of the Waste Water Discharge (Authorisation) Regulations, 2007 (S.I. 684 of 2007)” which is available at www.epa/downloads/forms/lic/wwda/.

The checklist and flowchart from Circular L8/08 “Water Services Investment and Rural Programmes – Protection of Natural Heritage and National Monuments” have been completed for this agglomeration. The results indicate that no significant effects are likely and that no appropriate assessment is required. The checklist and flowchart are included below.

For inspection purposes only.
Consent of copyright owner required for any other use.

**Wastewater Discharge Licence Certificate of Authorisation Application:
A0362-01 Bandon IDA Laragh**

**Circular L8/08 2 September 2008
Water Services Investment and Rural Water Programmes –
Protection of Natural Heritage and National Monuments**

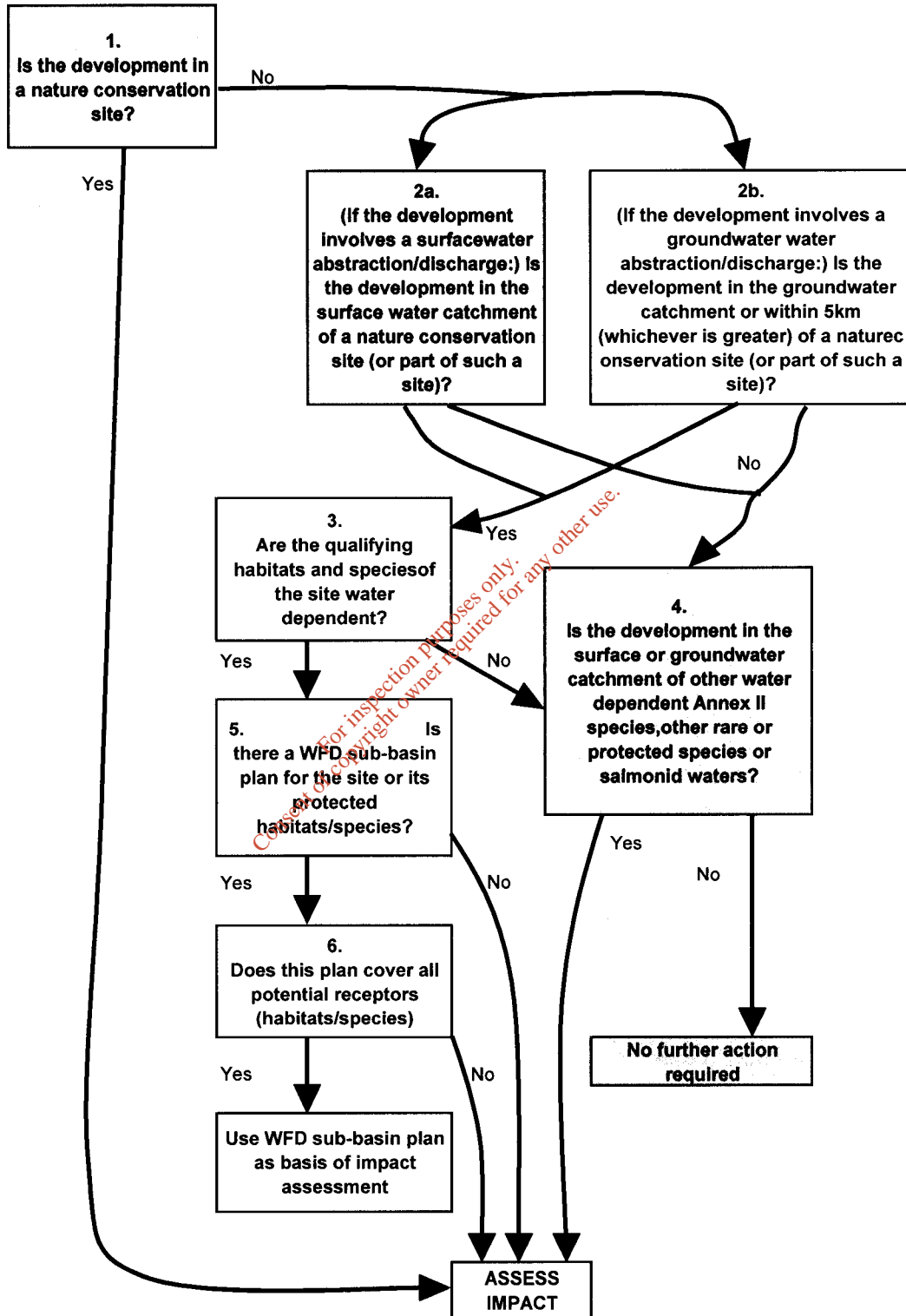
APPENDIX 1

Water Services Schemes - Natural Heritage Checklist for Local Authorities

What projects must be screened?

For new projects and significant changes to any existing operations, if the answer is 'yes' to any of the following, the project (i.e. construction, operation and maintenance) must be screened for its impacts:	
1. Is the development in or on the boundary of a nature conservation site NHA/SAC/SPA?	No
2. Will nationally protected species be directly impacted? Wildlife Acts (1976 and 2000), Flora Protection order (S.I. 94 of 1999)?	No
3. Is the development a surface water discharge or abstraction in the surface water catchment, or immediately downstream of a nature conservation site with water dependant qualifying habitats/ species?	No
4. Is the development a groundwater discharge or abstraction in the ground water catchment or within 5 km of a nature conservation site with water-dependant qualifying habitats/species?	No
5. Is the development in the surface water or groundwater catchment of salmonid waters?	No
6. Is the treatment plant in an active or former floodplain or flood zone of a river, lake, etc?	No
7. Is the development a surface discharge or abstraction to or from marine waters and within 3km of a marine nature conservation site?	No
8. Will the project in combination with other projects (existing and proposed) or changes to such projects affect the hydrology or water levels of sites of nature conservation interest or the habitats of protected species?	No

Flow Diagram with Questions relating to the Agglomeration of Bandon IDA Laragh Shaded Red



Conclusion: No appropriate assessment is required for Bandon IDA Laragh

Question 2 Confirm the design capacity of each of the waste water treatment plants and the current population equivalent (p.e.) being treated the plant. Please confirm that the current p.e. includes the maximum average weekly loading for the agglomeration having taken account of local festivals, peak holiday seasons etc.

The Design Capacity of the Bandon IDA Laragh WWTP is 325 PE

The Current Loading on the Bandon IDA Laragh WWTP has been estimated to be 325 PE.

The current loading figure was estimated as it was difficult to calculate the current load in PE terms, given that only some of the businesses located in the industrial estate were still operating. Also the number of people employed in these could not be accurately determined. The figure of 325 PE is an over-estimation as the current PE discharging to the WWTP would not exceed 250 at most. However Cork County Council decided to apply for the maximum capacity of the plant in the application, to allow for future growth in the industrial estate.

*For inspection purposes only.
Consent of copyright owner required for any other use.*