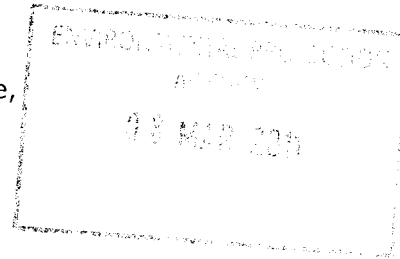


# Comhairle Contae Chorcaí Cork County Council

Halla an Chontae,  
Corcaigh, Éire.  
Fón: (021) 4276891 • Faics: (021) 4276321  
Suíomh Gréasáin: [www.corkcoco.ie](http://www.corkcoco.ie)  
County Hall,  
Cork, Ireland.  
Tel: (021) 4276891 • Fax: (021) 4276321  
Web: [www.corkcoco.ie](http://www.corkcoco.ie)



Administration,  
Environmental Licensing Programme,  
Office of Climate, Licensing & Resource Use,  
Environmental Protection Agency,  
Headquarters,  
PO Box 3000,  
Johnstown Castle Estate,  
County Wexford.



07 March 2011

Re: Kilmacsimon Agglomeration (Register No. A0360-01) Regulation 25(c)(ii) Further Information Response

Dear Sir/Madam,

With reference to your letter of the 14<sup>th</sup> of December 2010, please find the following attached:

- 1 Original of the Kilmacsimon Regulation 25 Further Information Response
- 1 Copy of the Kilmacsimon Regulation 25 Further Information Response
- 1 CDROM with the Further Information Response in PDF Format

Yours faithfully,

  
Noel O'Keeffe  
County Engineer & Director of Water Services



Recycled

# Kilmacsimon Regulation 25 Further Information Response

**Question 1**      **Assess the likelihood of significant effect of the waste water discharges from the above agglomerations on the relevant European sites by referring to Circular L8/08 “Water Services Investment and Rural Water Programmes – Protection of Natural Heritage and National Monuments” issued by the Department of Heritage and Local Government. In particular, the flow diagram in Appendix 1 should be completed and the results of each section recorded. Provide details of the results of this assessment within one month of the date of this notice. If significant effects are likely then and appropriate assessment must be carried out and a report of this assessment forwarded to the Agency within one month of the date of this notice. You are advised to provide the requested information in accordance with the “Note on Appropriate Assessments for the purposes of the Waste Water Discharge (Authorisation) Regulations, 2007 (S.I. 684 of 2007)” which is available at [www.epa/downloads/forms/lic/wwda/](http://www.epa/downloads/forms/lic/wwda/).**

*For inspection purposes only.  
Consent of copyright owner required for any other use.*

**Wastewater Discharge Licence Certificate of Authorisation Application:  
A0360-01 Kilmacsimon**

**Circular L8/08 2 September 2008  
Water Services Investment and Rural Water Programmes –  
Protection of Natural Heritage and National Monuments**

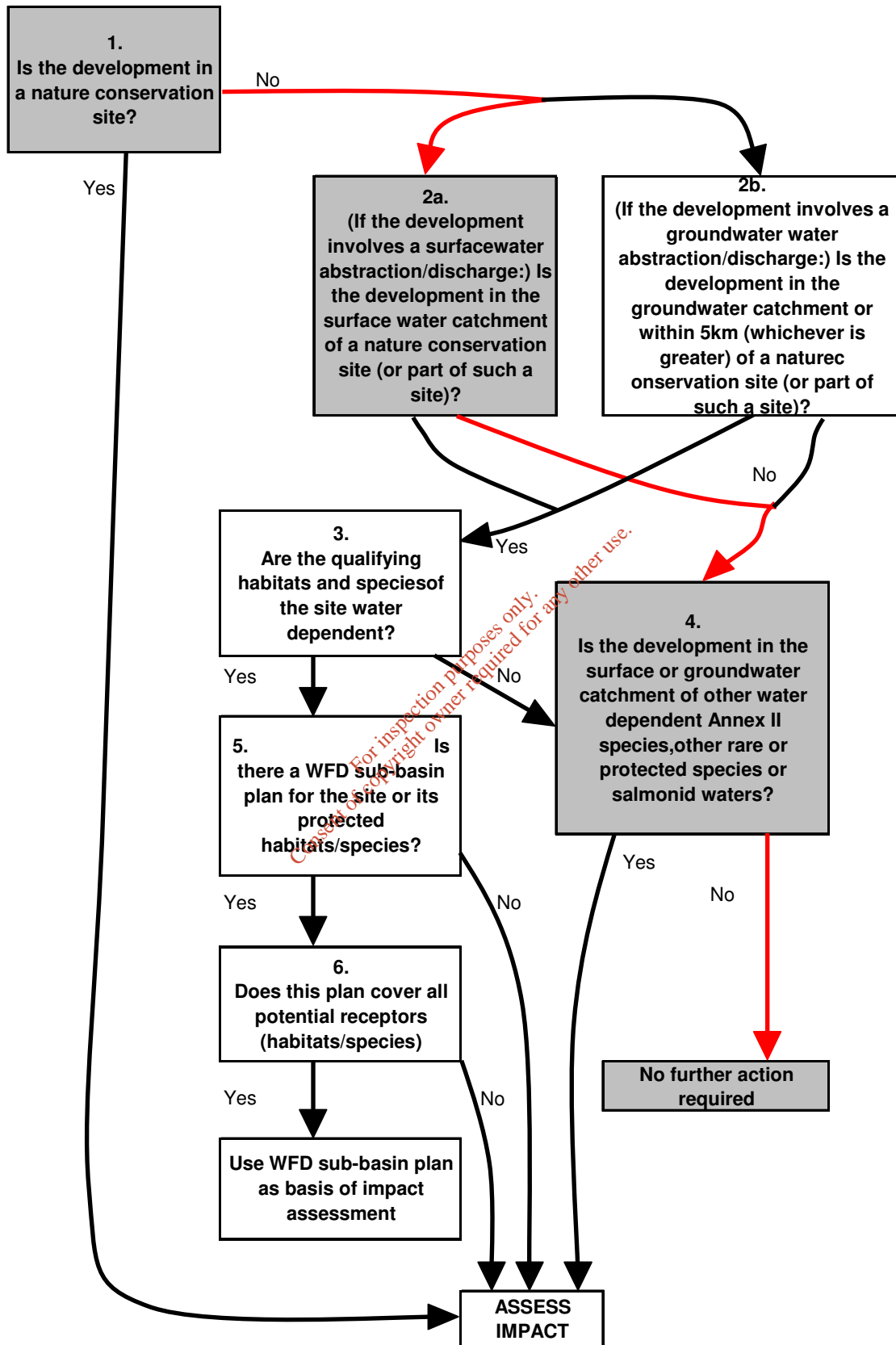
**APPENDIX 1**

**Water Services Schemes - Natural Heritage Checklist for Local Authorities**

**What projects must be screened?**

For new projects and significant changes to any existing operations, if the answer is 'yes' to any of the following, the project (i.e. construction, operation and maintenance) must be screened for its impacts:	
1. Is the development in or on the boundary of a nature conservation site NHA/SAC/SPA?	No
2. Will nationally protected species be directly impacted? Wildlife Acts (1976 and 2000), Flora Protection order (S.I. 94 of 1999)?	No
3. Is the development a surface water discharge or abstraction in the surface water catchment, or immediately downstream of a nature conservation site with water dependant qualifying habitats/ species?	No
4. Is the development a groundwater discharge or abstraction in the ground water catchment or within 5 km of a nature conservation site with water-dependant qualifying habitats/species?	No
5. Is the development in the surface water or groundwater catchment of salmonid waters?	No
6. Is the treatment plant in an active or former floodplain or flood zone of a river, lake, etc?	No
7. Is the development a surface discharge or abstraction to or from marine waters and within 3km of a marine nature conservation site?	No
8. Will the project in combination with other projects (existing and proposed) or changes to such projects affect the hydrology or water levels of sites of nature conservation interest or the habitats of protected species?	No

Flow Diagram with Questions relating to the Agglomeration of Kilmacsimon Shaded Red



Conclusion: No appropriate assessment is required for Kilmacsimon

**Question 2** Confirm the design capacity of each of the waste water treatment plants and the current population equivalent (p.e.) being treated at each plant. Please confirm that the current p.e. includes the maximum average weekly loading for the agglomeration having taken account of local festivals, peak holiday seasons etc.

The Kilmacsimon WWTP has a Design Capacity of 225PE.

The Kilmasimon WWTP has a current loading of 92 PE

These Current Loadings have been calculated on the basis of full occupancy of all dwellings in the agglomeration. An additional allowance of 10% has also been included on top of the calculated figure. Therefore these are maximum load figures. See Section B.8 of the Original application.

**Question 3** Please note that the agglomeration boundary shall include all areas serviced by the sewer network and shall include the wastewater treatment plant. All areas of the agglomeration shall be connected by the agglomeration boundary. Provide a revised drawing clearly detailing the boundary of the agglomeration to which this application relates, where applicable.

The agglomeration boundary shown in Drawing No. B1\_Map3 Rev 0 submitted in the original application includes all areas serviced by the sewer network and the wastewater treatment plant. Furthermore, all areas of the agglomeration are connected by the agglomeration boundary. However, in the interests of clarity Drawing No. B1\_Map3 Rev A has been revised to include the sewer network and the wastewater treatment plant. Drawing No. B1\_Map3 Rev A is included in **Appendix 1**.

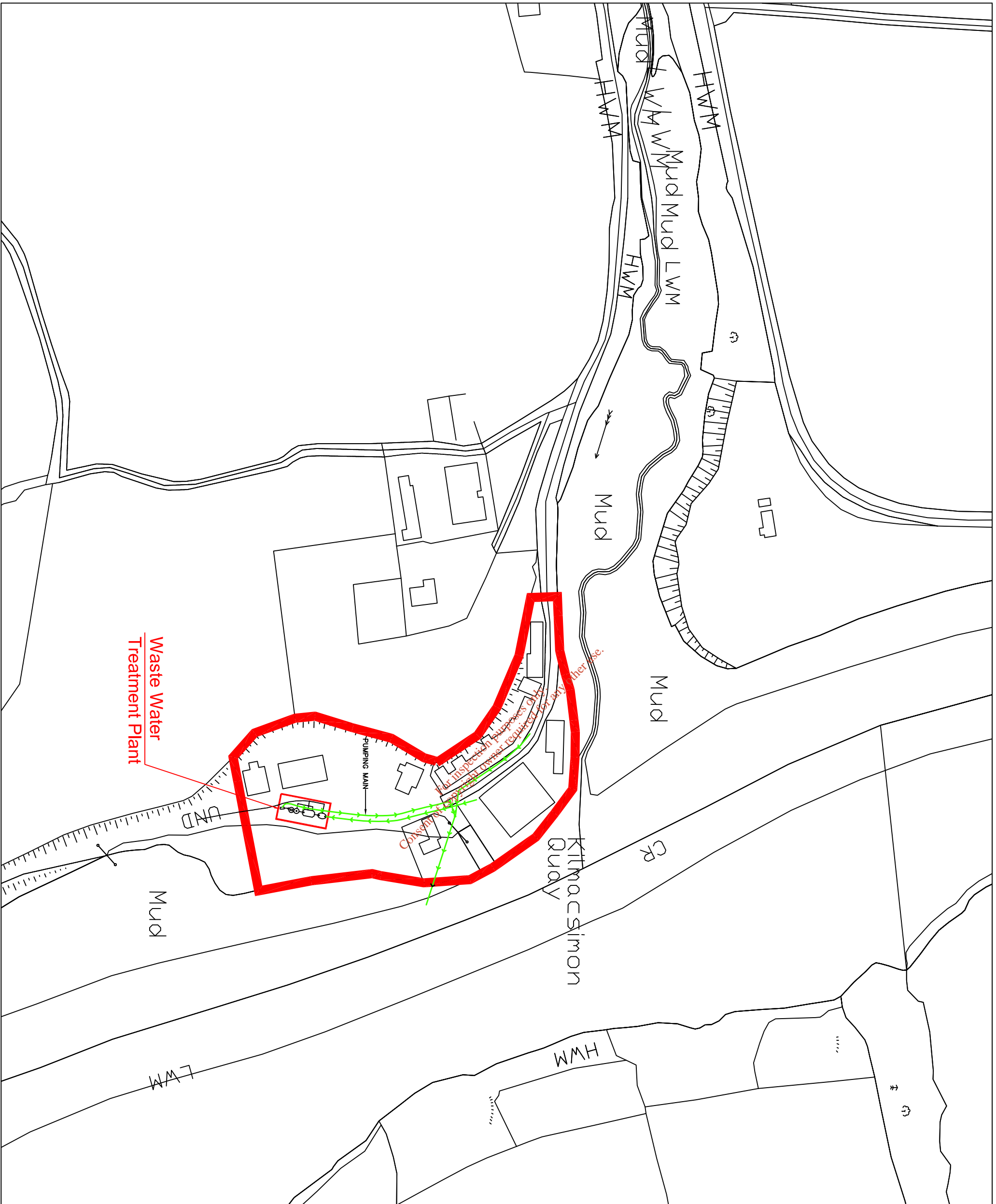
**Question 4** As per S.I. 684 of 2007 the “primary discharge point” means the discharge point with the largest volumetric flow. Please clarify which discharge is the primary discharge from the agglomeration. Reclassify all other discharges in line with the Waste Water Discharge Certificate of Authorisation Application Guidance Note which is available at [www.epa.ie/downloads/forms/lic/wwda](http://www.epa.ie/downloads/forms/lic/wwda). Amend all sections of the application form and associated drawings where appropriate.

There is only 1 discharge point from this agglomeration – SW1KMCS. As this is the only discharge point, by default it is the primary discharge point. The primary discharge point is shown in Drawing No. B2\_Map4 of the original application.

I refer to Page 9 of the Waste Water Discharge Certificate of Authorisation Application Guidance Note. This states that “*primary discharge point; means the discharge point with the largest volumetric flow from the waste water works*”. In situations where there are untreated discharges and discharges from WWTPs in the same agglomeration, this statement implies that the primary discharge must always be from the WWTP. If the intention is that the primary discharge is the largest volumetric discharge from the agglomeration, then this should be stated and reference to the WWTP removed from the guidance. I believe that the guidance note should be revised to clarify this issue.

# APPENDIX 1

*For inspection purposes only.  
Consent of copyright owner required for any other use.*



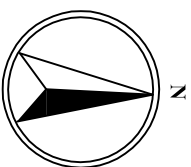
**NOTES:**

1. This drawing is the property of Cork County Council. It is a confidential document and must not be copied, used, or its content divulged without prior written consent.
2. Includes Ordnance Survey Ireland data reproduced under OSI Licence number: Cork County Council/CMA 2004/07. Unauthorised reproduction infringes Ordnance Survey/Ireland and Government of Ireland copyright. © Ordnance Survey Ireland, 2004.
3. All levels refer to Ordnance Survey Datum, Malin Head.
4. DO NOT SCALE, use figured dimensions only, if in doubt ask.

**AGGLOMERATION BOUNDARY**



**Sewer Mains**



Rev	Date	By	Description
A	03.03.11	MM	Location of WWTP & Sewer Mains included on dwg



**CORK COUNTY COUNCIL**  
SOUTHERN DIVISION

Neil O Keefe, B.E. Chief Executive  
County Hall, Cork.

Patricia Power,  
Director of Services,  
Aer Operations South

Project: **KILMACSIMON WWTP**  
**WASTE WATER**  
**DISCHARGE LICENCE APPLICATION**

Title: Application Form  
Attachment B1\_Map3  
Agglomeration Boundary Served By  
Waste Water Treatment Works

Designed: CB	Checked: MH	Scale: 1:2,000 @ A3	Drawing No: B1_Map3_A
Drawn: MM	Approved: MH	Date: Nov 09	Status: A