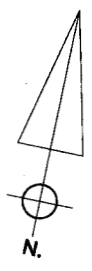
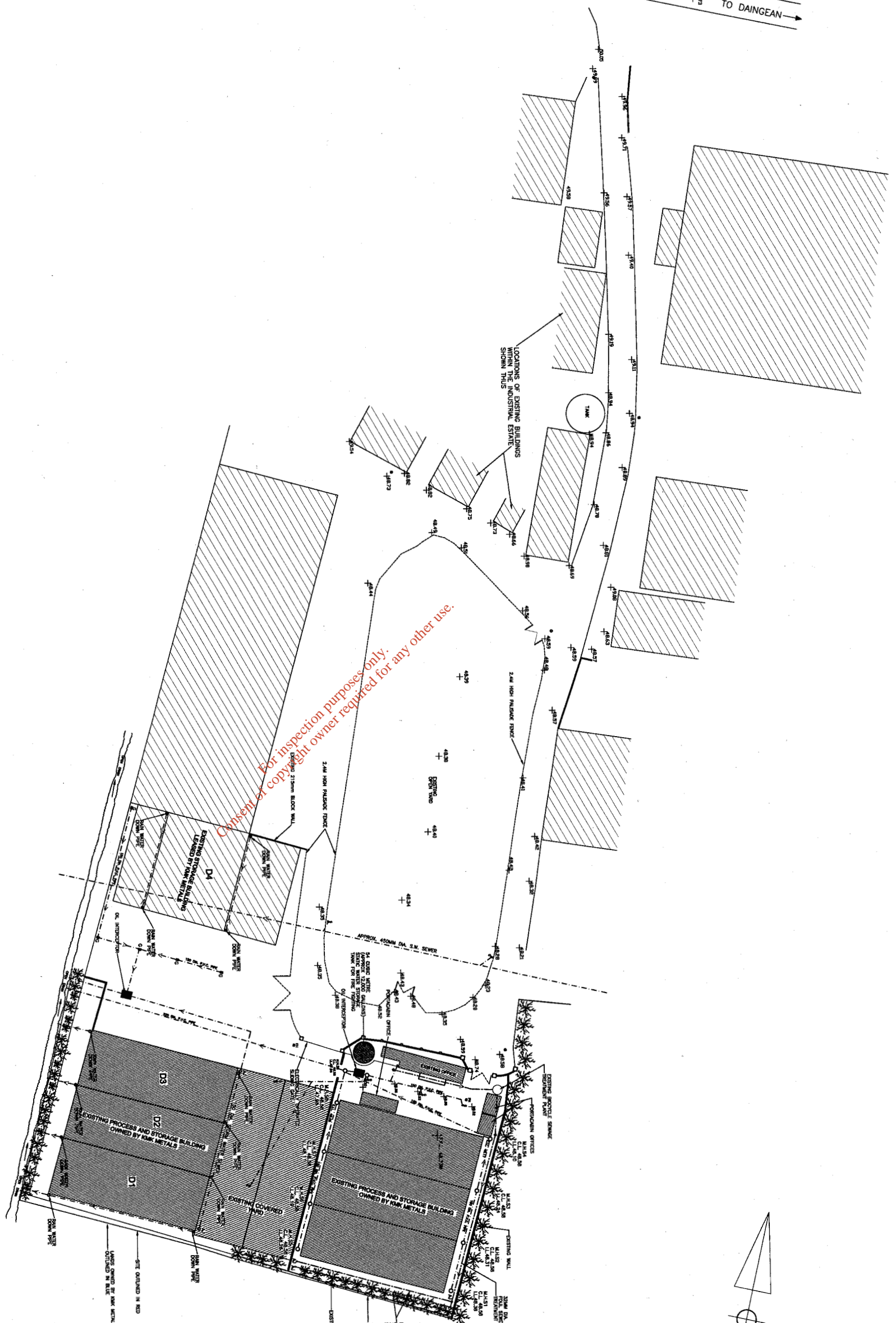


TO TULLAMORE
TO DAINGEAN



LEGEND:

---	EXISTING DRAIN SERVICES
---	EXISTING SURFACE WATER SERVICES
---	EXISTING SEWER SERVICES
○	EXISTING TELEPHONE AND CABLE SERVICES
○	EXISTING TELEPHONE AND CABLE SERVICES

NOTES:
LEVELS RELATE TO TEMPORARY BENCH MARK OF 42.72M ON FLOOR LEVEL OF EXISTING WAREHOUSE.
OS MAP NUMBER: 84N1, 84N2

PLANNING PERMISSION

REV	DESCRIPTION	BY	CHK	APP	DATE

KMK METALS LTD
CAPPIPCUR INDUSTRIAL ESTATE
DAINGEAN RD. TULLAMORE

OLD BRIDGE HOUSE
STRAND STREET
ATHLONE
CO. WESTMETH
TEL: +353 (0)90 647 4264
FAX: +353 (0)90 647 8422
e-mail: athlone@kmk.com

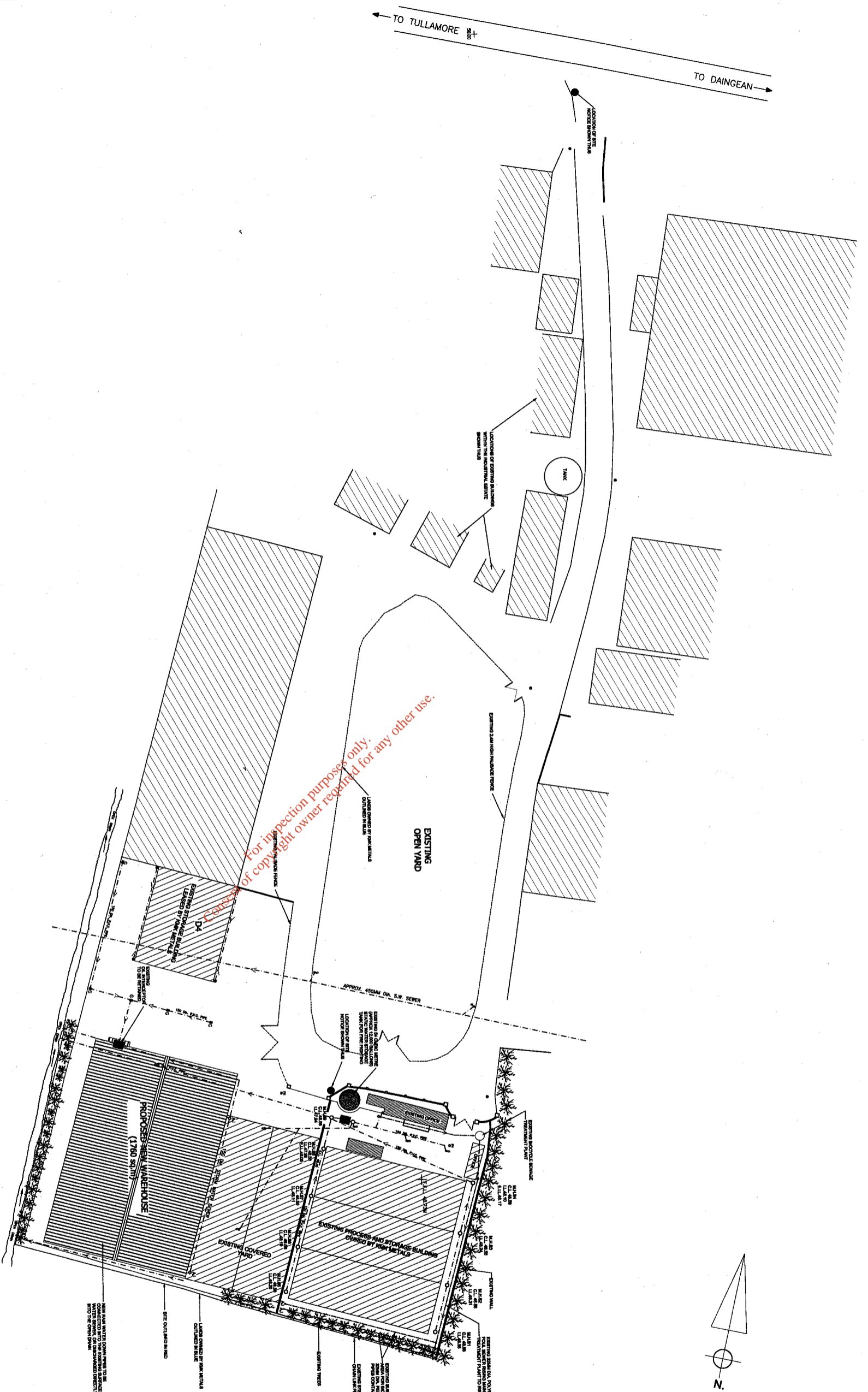


Project:
KMK METALS LTD.
PROPOSED NEW WAREHOUSE

Drawing Title:
EXISTING SITE LAYOUT

Scale	AI	Drawn	Date	Checked	Date	Approved	Date
1:500	NK	07/01/10					
Project No.	C007629	Office Type	1901	S	Drawing No.	PP07	Revision

ENVIRONMENTAL PROTECTION AGENCY
14 FEB 2011



LEGEND:

- EXISTING FOOT PATH
- EXISTING SURFACE WATER DRAIN
- EXISTING SURFACE WATER DRAIN
- EXISTING SURFACE WATER DRAIN
- EXISTING SURFACE WATER DRAIN

NOTES:
 1. LINES & POINTS TO TEMPORARY BOUNDARY OF 48.75M ON EAST SIDE OF EXISTING WAREHOUSE.
 OS MAP NUMBER: 3454 & 3455-A

PLANNING PERMISSION

REV	DISCUSSION	BY	CHK	APP	DATE

KMK METALS RECYCLING LTD
 CAPPINCUR INDUSTRIAL ESTATE
 DAINGEAN RD, TULLAMORE

OLD BRIDGE HOUSE
 STRAWD STREET
 TULLAMORE
 CO. WESTMEATH
 TEL: +353 (0)90 667 4264
 FAX: +353 (0)90 667 8422
 e-mail: info@kmg.com



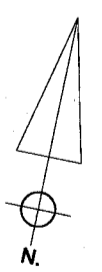
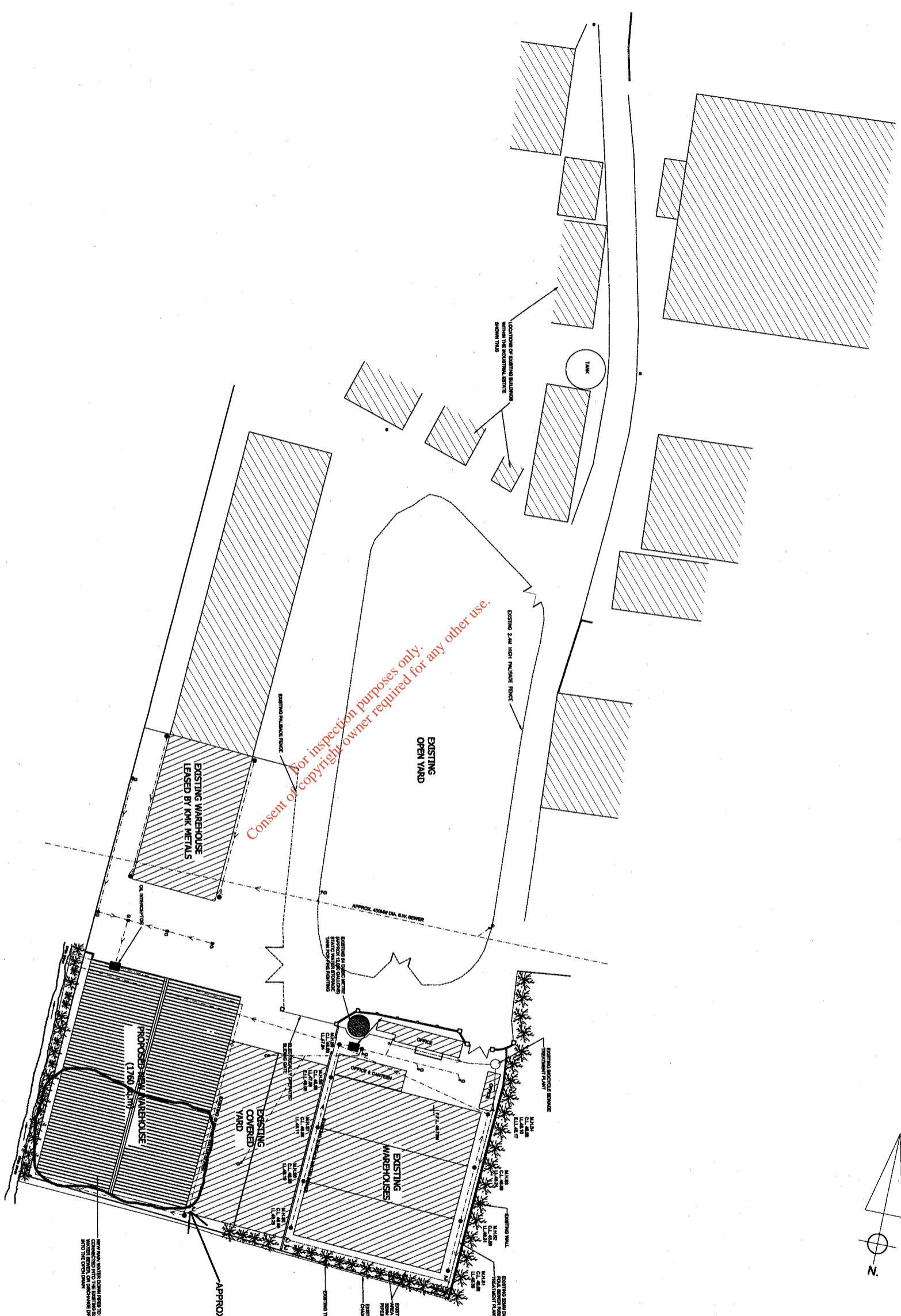
KMK METALS LTD
 PROPOSED NEW WAREHOUSE

ENVIRONMENTAL PROTECTION AGENCY

14 FEB 2011

Scale @	AT	Drawn	Date	Checked	Date	Approved	Date
1:500		HK	07-01-10				
Project No.	Office	Type	Drawing No.	Revision			
C007629	1901	S	PP08				

TO TULLAMORE
TO DAINGEAN



DO NOT SCALE. CONTRACTOR TO CHECK ALL DIMENSIONS AND REPORT ANY OMISSIONS OR ERRORS

ENVIRONMENTAL PROTECTION
AGENCY

14 FEB 2011

PLANNING PERMISSION

REV | DESCRIPTION | BY | DATE

KMK METALS RECYCLING LTD
CAPPINCUR INDUSTRIAL ESTATE
DAINGEAN RD. TULLAMORE

OLD BRIDGE HOUSE
STRAND STREET
ATHLONE
CO. WESTMIDTH

TEL: +353 (0)90 647 424
FAX: +353 (0)90 647 502
e-mail: athlone@wyg.com

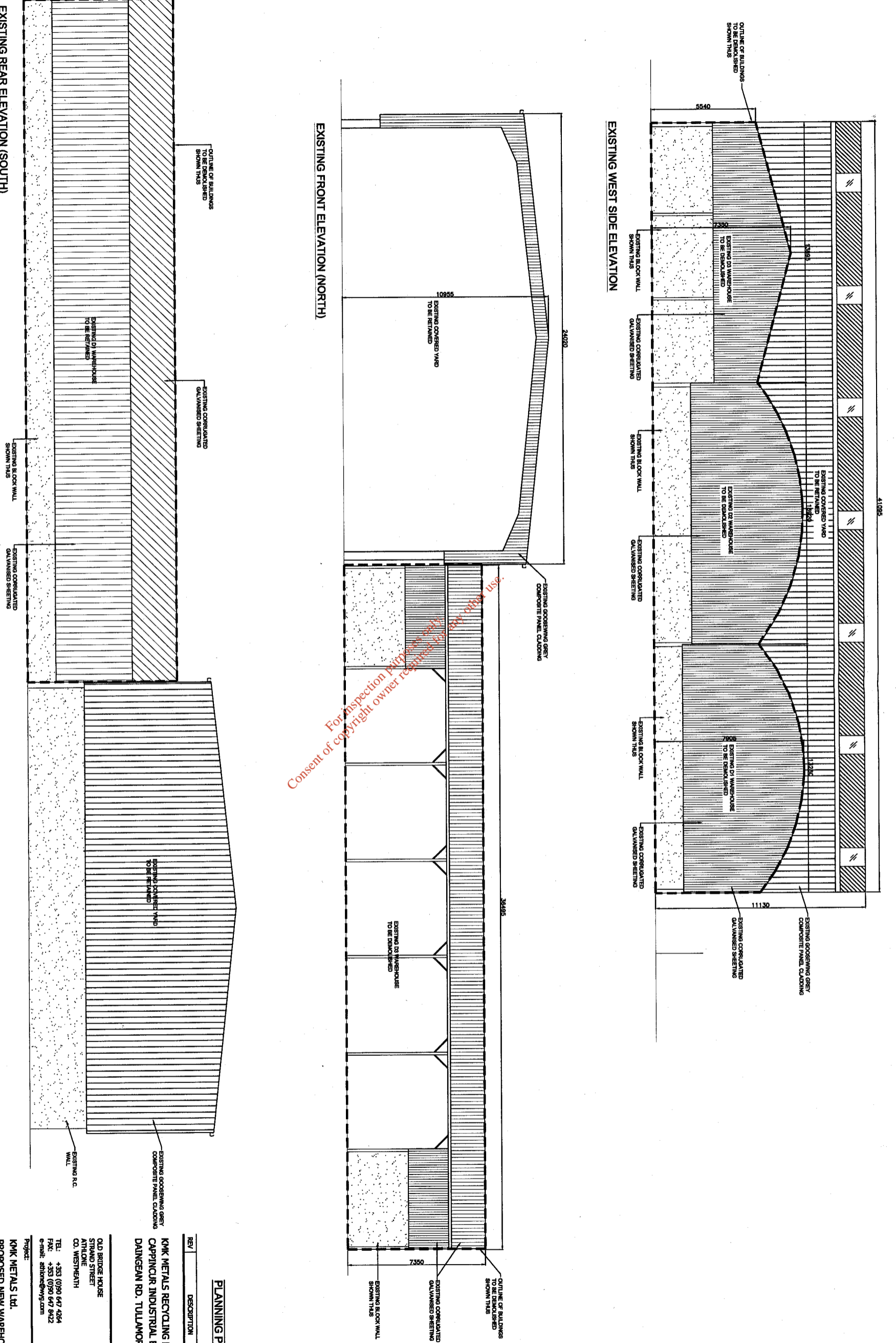
Project:
KMK METALS LTD.
PROPOSED NEW WAREHOUSE



Drawing Title:
PROPOSED SITE LAYOUT

Scale @	AI	Drawn	Date	Checked	Date	Approved	Date
1:500	NK	07-01-10					
Project No.		Office Type		Drawing No.		Revision	
C007629		S		PP02			

© WYG Group Ltd.



PLANNING PERMISSION

REV	DESCRIPTION	BY	CHK	APP	DATE
-----	-------------	----	-----	-----	------

KMK METALS RECYCLING LTD
CAPPINCUR INDUSTRIAL ESTATE
DAINGEAN RD. TULLAMORE

OLD BRIDGE HOUSE
STRAND STREET
CO. WESTMETH
TEL: +353 (0)90 647 4364
FAX: +353 (0)90 647 8922
Email: arlene@kmy.com



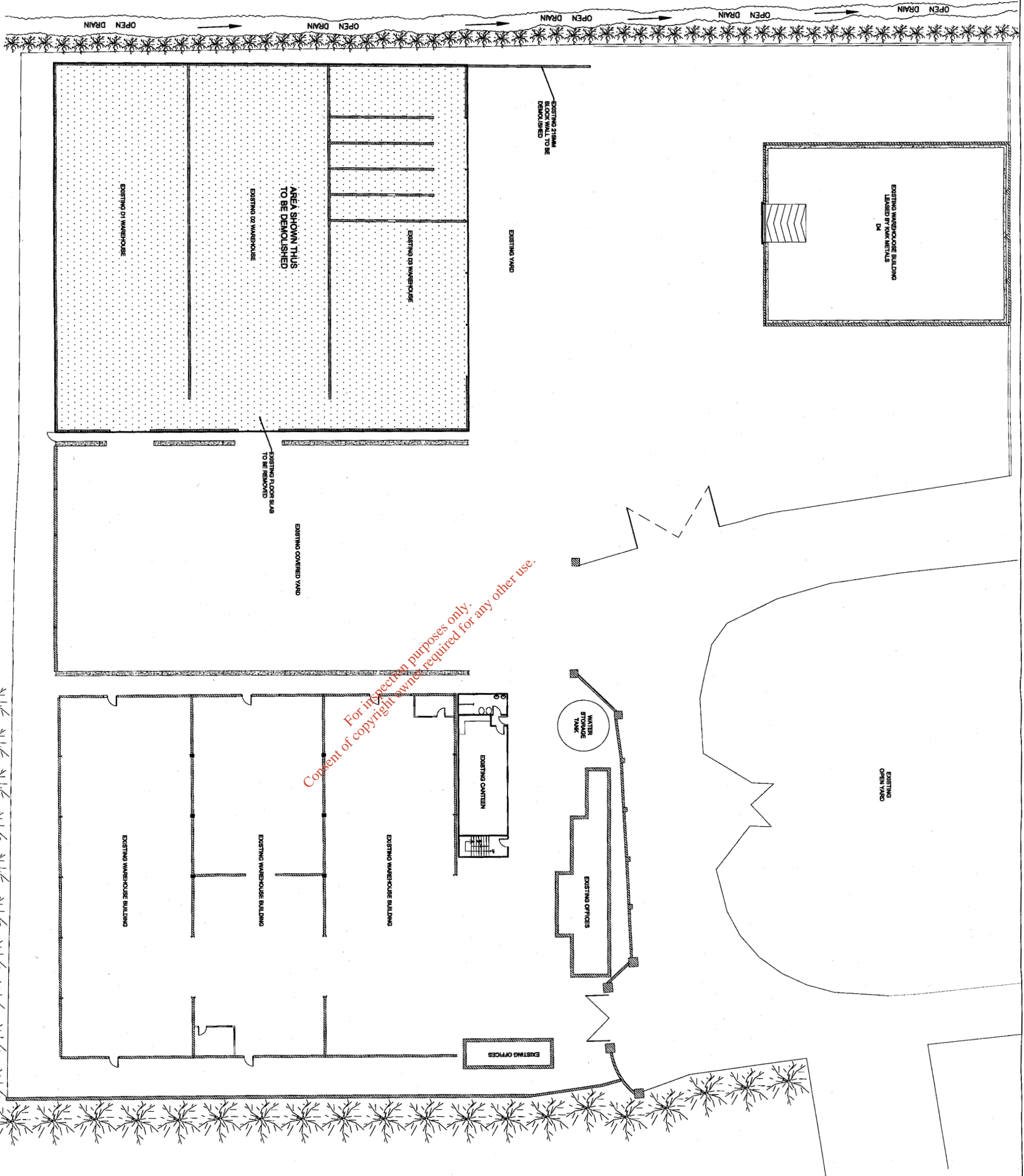
Project:
KMK METALS LTD.
PROPOSED NEW WAREHOUSE

Drawing Title:

EXISTING ELEVATIONS

Scale	Drawn	Date	Checked	Date	Approved	Date
1:100	NK	09-09-09				
Project No.	Office Type	Drawing No.	Revision			
C007629	1901	S	PP15			

ENVIRONMENTAL PROTECTION
AGENCY
14 FEB 2011



ENVIRONMENTAL PROTECTION AGENCY

14 FEB 2011

PLANNING PERMISSION

REV | DESCRIPTION | BY | CHK | APP | DATE
 KMK METALS RECYCLING LTD
 CAPPINGOUR INDUSTRIAL ESTATE
 DAINGEAN RD. TULLAMORE

OLD BRIDGE HOUSE
 STRAND STREET
 CO. WICK
 CO. WICK
 TEL: +353 (0)90 667 4264
 FAX: +353 (0)90 667 8422
 e-mail: athone@wyg.com



Project: KMK METALS Ltd.
 PROPOSED NEW WAREHOUSE

Drawing Title: DEMOLITION PLAN

Scale	Drawn	Date	Checked	Date	Approved	Date
1:200	AK	07-01-10				
Project No.	Office Type	Drawing No.	Revision			
C007629	1901 S	PP09				