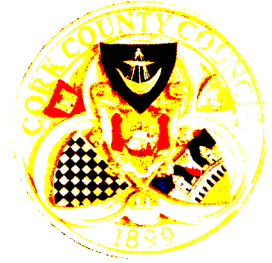


Comhairle Contae Chorcaí
Cork County Council

Water Services,
Courthouse,
Skibbereen,
Co. Cork.
Tel No: (028)21299
Fax No: (028)21995



Web: <http://www.corkcoco.com/>

Administration,
Environmental Licensing Programme,
Office of Climate, Licensing & Resource Use,
Environmental Protection Agency,
Headquarters,
PO Box 3000,
Johnstown Castle Estate,
County Wexford

28th January 2011

Re: A0404-01 – Sherkin Island Waste Water Discharge Certificate of Authorisation – Reply to Notice in accordance with Regulation 25(c)(ii) of the Waste Water Discharge (Authorisation) Regulations 2007

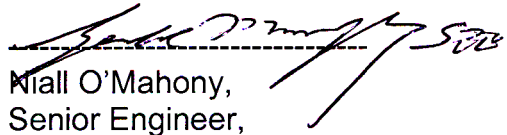
Dear Ms. Stafford,

I refer to your letter of the 14th December 2010 concerning the above. The following is our reply to your request for further information in accordance with Regulation 25(c)(ii) dealing in sequence with the points raised:

Assessment of Effects of the Waste Water Discharges

The discharge point from Sherkin Island Agglomeration is adjacent to Roaringwater Bay & Islands SAC. An appropriate assessment is being carried in relation to Roaringwater Bay & Islands SAC as part of the Ballydehob licence application and Sherkin Island will be taken into consideration as part of this assessment. This assessment will be forwarded to the agency once completed.

Yours sincerely,


Miall O'Mahony,
Senior Engineer,
Cork County Council

Enclosures

For inspection purposes only.
Consent of copyright owner required for any other use.

Wastewater Discharge Certificate of Authorisation: A0404-01 Sherkin Island

Circular L8/08 2 September 2008 Water Services Investment and Rural Water Programmes – Protection of Natural Heritage and National Monuments

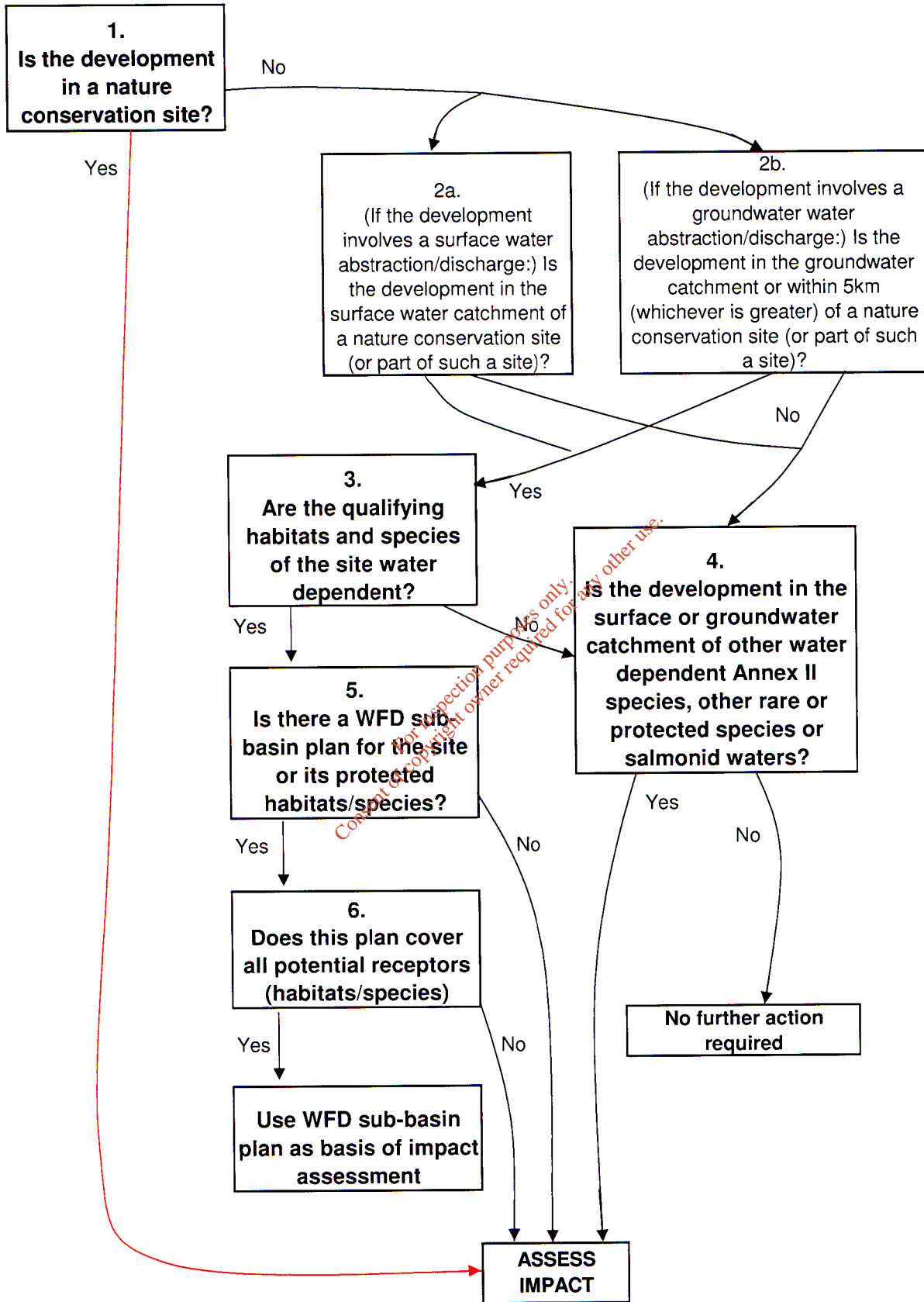
APPENDIX 1

Water Services Schemes - Natural Heritage Checklist for Local Authorities

What projects must be screened?

For new projects and significant changes to any existing operations, if the answer is 'yes' to any of the following, the project (i.e. construction, operation and maintenance) must be screened for its impacts:	
1. Is the development in or on the boundary of a nature conservation site NHA/SAC/SPA?	Yes
2. Will nationally protected species be directly impacted? Wildlife Acts (1976 and 2000), Flora Protection order (S.I. 94 of 1999)?	No
3. Is the development a surface water discharge or abstraction in the surface water catchment, or immediately downstream of a nature conservation site with water dependant qualifying habitats/ species?	No
4. Is the development a groundwater discharge or abstraction in the ground water catchment or within 5 km of a nature conservation site with water-dependant qualifying habitats/species?	Yes
5. Is the development in the surface water or groundwater catchment of salmonid waters?	No
6. Is the treatment plant in an active or former floodplain or flood zone of a river, lake, etc?	No
7. Is the development a surface discharge or abstraction to or from marine waters and within 3km of a marine nature conservation site?	No
8. Will the project in combination with other projects (existing and proposed) or changes to such projects affect the hydrology or water levels of sites of nature conservation interest or the habitats of protected species?	No

Flow Diagram - Route Highlighted Red & Shaded Grey



Conclusion: An appropriate assessment is being carried out on Roaringwater Bay & Island SAC in relation to Ballydehob WWDL and Sherkin Island will form part of this assessment.