

*Comhairle Contae Chorcaí*  
*Cork County Council*

Water Services,  
Courthouse,  
Skibbereen,  
Co. Cork.  
Tel No: (028)21299  
Fax No: (028)21995



Web: <http://www.corkcoco.com/>

Administration,  
Environmental Licensing Programme,  
Office of Climate, Licensing & Resource Use,  
Environmental Protection Agency,  
Headquarters,  
PO Box 3000,  
Johnstown Castle Estate,  
County Wexford

28<sup>th</sup> January 2011

**Re: A0401-01 – Ring Waste Water Discharge Certificate of Authorisation**  
**– Reply to Notice in accordance with Regulation 25(c)(ii) of the Waste Water**  
**Discharge (Authorisation) Regulations 2007**

Dear Ms. Stafford,

I refer to your letter of the 14<sup>th</sup> December 2010 concerning the above. The following is our reply to your request for further information in accordance with Regulation 25(c)(ii).

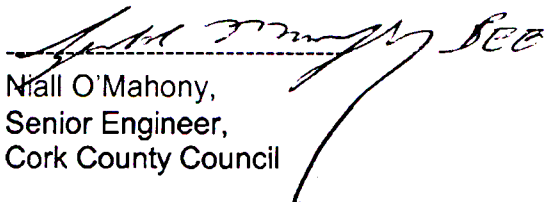
**1. Assessment of Effects of the Waste Water Discharges on European Sites**

The treatment plant in Ring serves 4 dwelling houses with a current PE of 12. The discharge point from the agglomeration is to a percolation area and is adjacent to Clonakilty Bay SAC & SPA. An appropriate assessment was carried as part of the Clonakilty WWDL application and was submitted to the agency in October 2009. It is proposed as part of the upgrade to the Clonakilty WWTP that the scheme will be expanded to treat the wastewater from Ring and other agglomerations and this was taken into consideration when carrying out the appropriate assessment for Clonakilty. It can therefore be concluded that an appropriate assessment is not required as part of this Certificate of Authorisation application.

**2. Primary Discharge Point**

The national grid reference for the Primary Discharge Point is 141218, 040399. See revised drawing no. B3.01 Rev A attached.

Yours sincerely,

  
Niall O'Mahony,  
Senior Engineer,  
Cork County Council

Enclosures

**Wastewater Discharge Certificate of Authorisation: A0401-01 Ring**

**Circular L8/08 2 September 2008  
Water Services Investment and Rural Water Programmes –  
Protection of Natural Heritage and National Monuments**

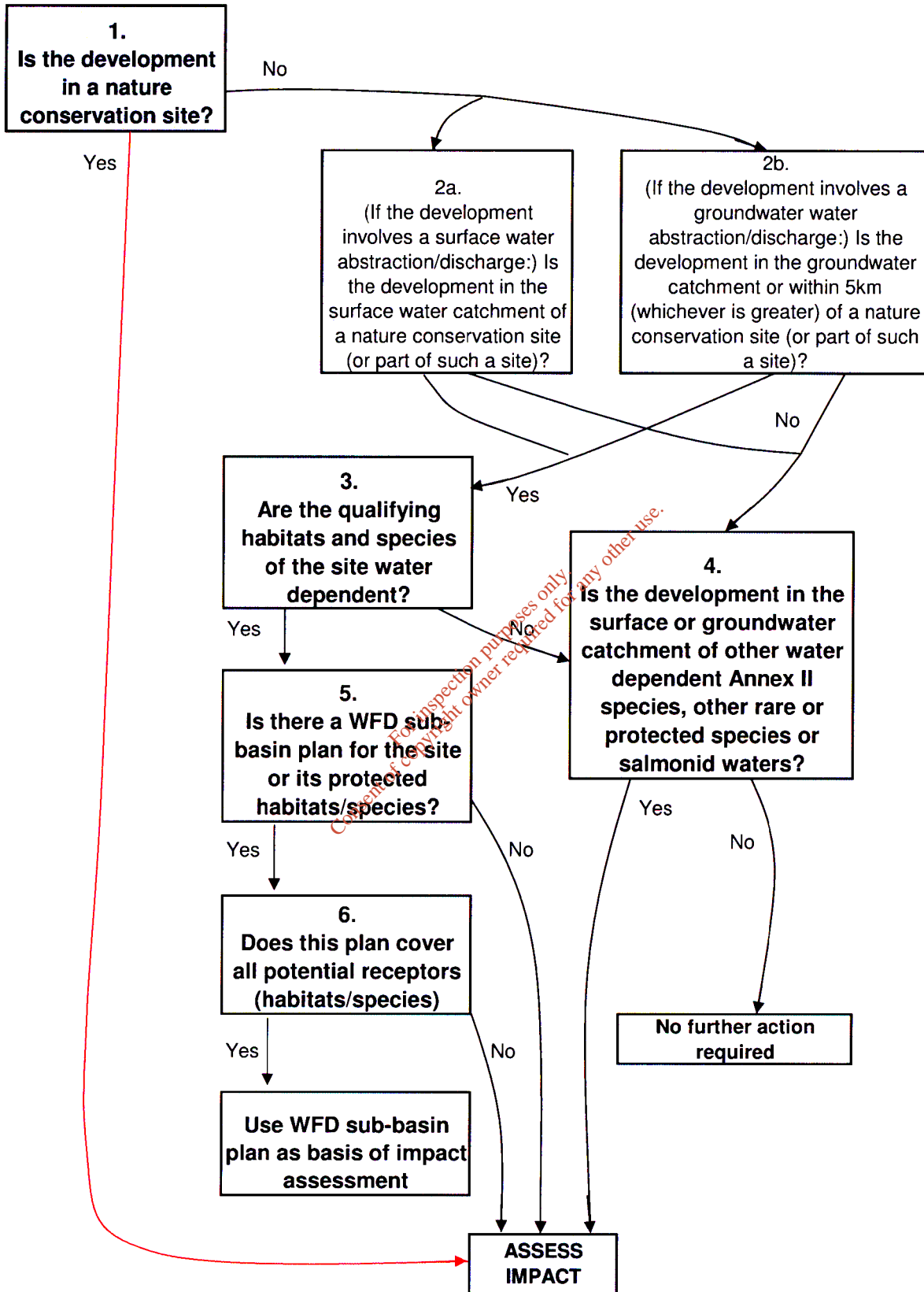
**APPENDIX 1**

**Water Services Schemes - Natural Heritage Checklist for Local Authorities**

**What projects must be screened?**

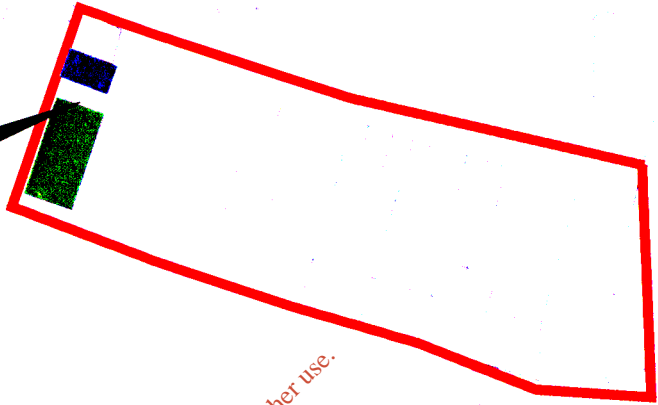
For new projects and significant changes to any existing operations, if the answer is 'yes' to any of the following, the project (i.e. construction, operation and maintenance) must be screened for its impacts:	
1. Is the development in or on the boundary of a nature conservation site NHA/SAC/SPA?	Yes
2. Will nationally protected species be directly impacted? Wildlife Acts (1976 and 2000), Flora Protection order (S.I. 94 of 1999)?	No
3. Is the development a surface water discharge or abstraction in the surface water catchment, or immediately downstream of a nature conservation site with water dependant qualifying habitats/ species?	No
4. Is the development a groundwater discharge or abstraction in the ground water catchment or within 5 km of a nature conservation site with water-dependant qualifying habitats/species?	Yes
5. Is the development in the surface water or groundwater catchment of salmonid waters?	No
6. Is the treatment plant in an active or former floodplain or flood zone of a river, lake, etc?	No
7. Is the development a surface discharge or abstraction to or from marine waters and within 3km of a marine nature conservation site?	No
8. Will the project in combination with other projects (existing and proposed) or changes to such projects affect the hydrology or water levels of sites of nature conservation interest or the habitats of protected species?	No

Flow Diagram - Route Highlighted Red & Shaded Grey



Conclusion: An appropriate assessment was carried out as part of the Clonakilty Wastewater Discharge Licence Application. Ring was considered as part of the report and therefore an individual assessment is not required for Ring.

**Primary Discharge Point  
GW01 RING  
E: 141218 N: 040399**



*For inspection purposes only.  
Consent of copyright owner required for any other use.*

  
**COOK COUNTY HEALTH DEPARTMENT**  
WASTEWATER DIVISION  
1000 N. LAKE ST.  
CHICAGO, IL 60610  
TEL: 773-305-3000  
WWW.COOKCOUNTYHEALTHDEPARTMENT.COM

