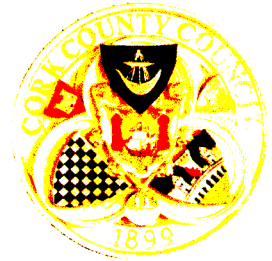


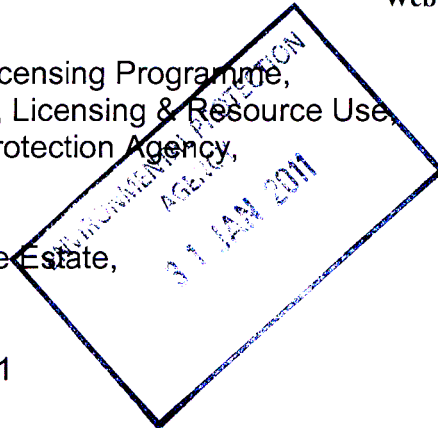
*Comhairle Contae Chorcaí*  
*Cork County Council*

Water Services,  
Courthouse,  
Skibbereen,  
Co. Cork.  
Tel No: (028)21299  
Fax No: (028)21995



Web: <http://www.corkcoco.com/>

Administration,  
Environmental Licensing Programme,  
Office of Climate, Licensing & Resource Use,  
Environmental Protection Agency,  
Headquarters,  
PO Box 3000,  
Johnstown Castle Estate,  
County Wexford



28<sup>th</sup> January 2011

**Re: A0399-01 – Kilcrohane Waste Water Discharge Certificate of Authorisation**  
**– Reply to Notice in accordance with Regulation 25(c)(ii) of the Waste Water**  
**Discharge (Authorisation) Regulations 2007**

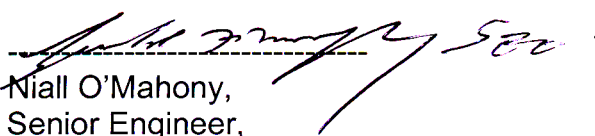
Dear Ms. Stafford,

I refer to your letter of the 14<sup>th</sup> December 2010 concerning the above. The following is our reply to your request for further information in accordance with Regulation 25(c)(ii):

**Assessment of Effects of the Waste Water Discharges**

With reference to Circular L8/08 and the flow diagram in Appendix 1 attached, it can be concluded that the wastewater discharging from the agglomeration will not have significant effects on any relevant European sites. The site or discharge is not located within or in the vicinity of a designated area.

Yours sincerely,

  
Niall O'Mahony,  
Senior Engineer,  
Cork County Council

Enclosures

For inspection purposes only.  
Consent of copyright owner required for any other use.

## Wastewater Discharge Certificate of Authorisation: A0399-01 Kilcrohane

### Circular L8/08 2 September 2008 Water Services Investment and Rural Water Programmes – Protection of Natural Heritage and National Monuments

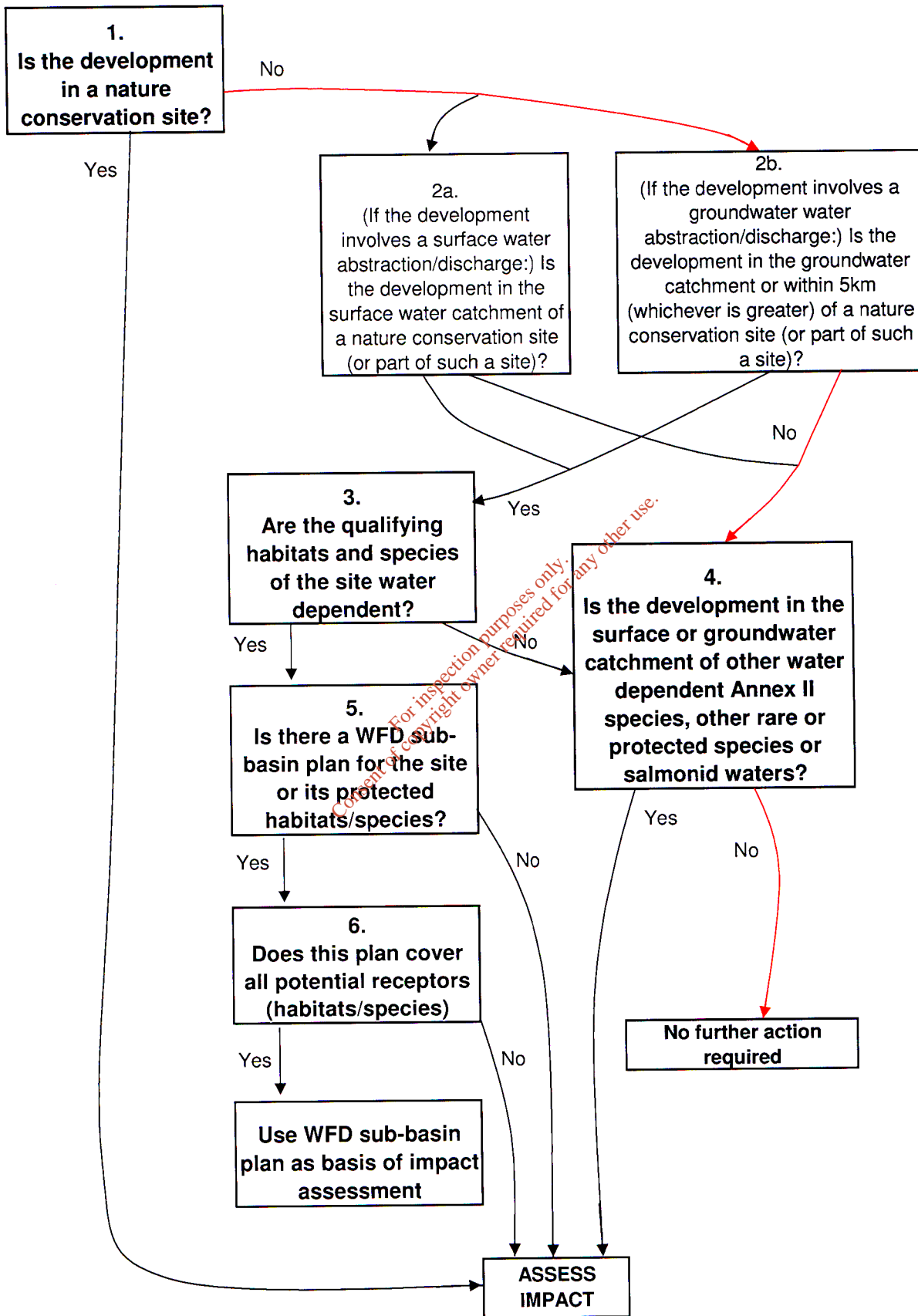
#### APPENDIX 1

#### Water Services Schemes - Natural Heritage Checklist for Local Authorities

#### What projects must be screened?

For new projects and significant changes to any existing operations, if the answer is 'yes' to any of the following, the project (i.e. construction, operation and maintenance) must be screened for its impacts:	
1. Is the development in or on the boundary of a nature conservation site NHA/SAC/SPA?	No
2. Will nationally protected species be directly impacted? Wildlife Acts (1976 and 2000), Flora Protection order (S.I. 94 of 1999)?	No
3. Is the development a surface water discharge or abstraction in the surface water catchment, or immediately downstream of a nature conservation site with water dependant qualifying habitats/ species?	No
4. Is the development a groundwater discharge or abstraction in the ground water catchment or within 5 km of a nature conservation site with water-dependant qualifying habitats/species?	No
5. Is the development in the surface water or groundwater catchment of salmonid waters?	No
6. Is the treatment plant in an active or former floodplain or flood zone of a river, lake, etc?	No
7. Is the development a surface discharge or abstraction to or from marine waters and within 3km of a marine nature conservation site?	No
8. Will the project in combination with other projects (existing and proposed) or changes to such projects affect the hydrology or water levels of sites of nature conservation interest or the habitats of protected species?	No

Flow Diagram - Route Highlighted Red & Shaded Grey



Conclusion: An appropriate assessment is not required for Kilcrohane