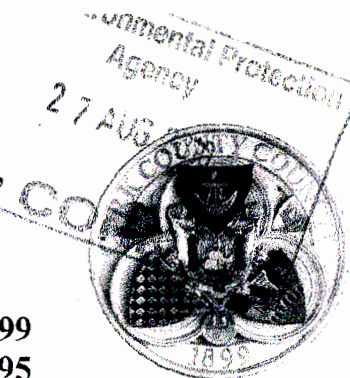


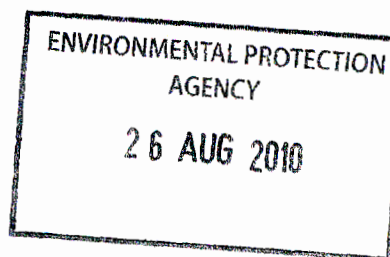
Comhairle Contae Chorcaí
Cork County Council

Water Services,
Courthouse,
Skibbereen,
Co. Cork.
Tel No: (028)21299
Fax No: (028)21995



Web: <http://www.corkcoco.com/>

Administration,
Environmental Licensing Programme,
Office of Climate, Licensing & Resource Use,
Environmental Protection Agency,
Headquarters,
PO Box 3000,
Johnstown Castle Estate,
County Wexford



24th August 2010

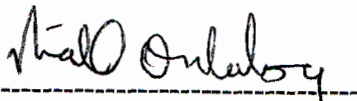
Re: **Waste Water Discharge Licence Application – Reasoned Response for:**
D0297-01 – Castletownbere
D0467-01 – Ballydehob
D0468-01 – Castletownshend
D0469-01 – Unionhall
D0470-01 – Drimoleague
D0472-01 – Ballineen Enniskean

Dear Mr. Clabby,

I refer to your e-mail of the 18th August 2010 regarding Appendix 1 of L808 and the above mentioned Wastewater Discharge Licence applications. Enclosed are our replies to your request for further information.

1 CD-ROM with replies in PDF format also enclosed.

Yours sincerely,



Niall O'Mahony,
Senior Engineer,
Water Services.

Enclosures

ORIGINAL



D0470-01 DRIMOLEAGUE

**WASTE WATER DISCHARGE
LICENCE APPLICATION**



**Reasoned Response
1st September 2010**

Wastewater Discharge Licence Application: D0470-01 Drimoleague

**Circular L8/08 2 September 2008
Water Services Investment and Rural Water Programmes –
Protection of Natural Heritage and National Monuments**

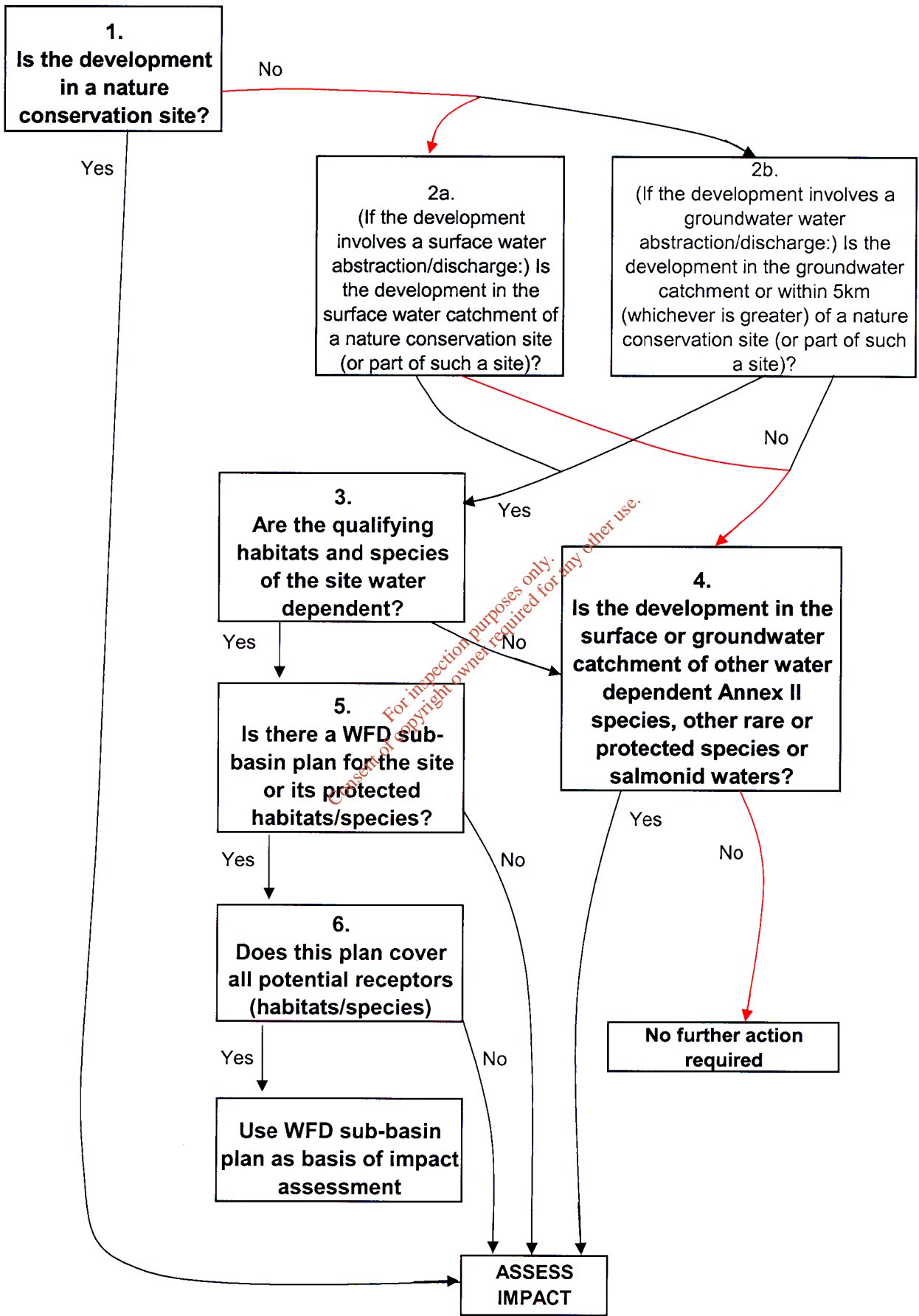
APPENDIX 1

Water Services Schemes - Natural Heritage Checklist for Local Authorities

What projects must be screened?

For new projects and significant changes to any existing operations, if the answer is 'yes' to any of the following, the project (i.e. construction, operation and maintenance) must be screened for its impacts:	
1. Is the development in or on the boundary of a nature conservation site NHA/SAC/SPA?	No
2. Will nationally protected species be directly impacted? Wildlife Acts (1976 and 2000), Flora Protection order (S.I. 94 of 1999)?	No
3. Is the development a surface water discharge or abstraction in the surface water catchment, or immediately downstream of a nature conservation site with water dependant qualifying habitats/ species?	No
4. Is the development a groundwater discharge or abstraction in the ground water catchment or within 5 km of a nature conservation site with water-dependant qualifying habitats/species?	No
5. Is the development in the surface water or groundwater catchment of salmonid waters?	No
6. Is the treatment plant in an active or former floodplain or flood zone of a river, lake, etc?	No
7. Is the development a surface discharge or abstraction to or from marine waters and within 3km of a marine nature conservation site?	No
8. Will the project in combination with other projects (existing and proposed) or changes to such projects affect the hydrology or water levels of sites of nature conservation interest or the habitats of protected species?	No

Flow Diagram - Route Highlighted Red & Shaded Grey



Conclusion: An appropriate assessment is not required for Drimoleague