



**Waste Transfer and Recycling Facility
Forge Hill, Kinsale Road,
Cork.**

**Annual Environmental Report
January to December 2009**

EPA Ref. No:

W0173-1

Environmental Protection Agency
Iniscarra, Co.Cork.
Telephone: 021 - 4875540 Fax: 021 - 4875545

VEOLIA ENVIRONMENTAL SERVICES (IRELAND) LTD

WASTE TRANSFER AND RECYCLING FACILITY

ANNUAL ENVIRONMENTAL REPORT

January to December 2009

Prepared by:-

Pearse Moroney
National Environment Manager

March 2010

TABLE OF CONTENTS

| | PAGE |
|--|------------------|
| 1 INTRODUCTION | 3 |
| 2 DESCRIPTION OF THE SITE | 5 |
| 3 MONITORING AND EMISSIONS SUMMARY | 7 |
| 3.1. EMISSIONS TO SURFACE WATER | 7 |
| 3.2. EMISSIONS TO FOUL SEWER..... | 8 |
| 3.3. NOISE | 9 |
| 3.4. DUST MONITORING | 9 |
| 3.5. GROUNDWATER MONITORING..... | 10 |
| 3.5. INTERPRETATION OF MONITORING RESULTS | 10 |
| 3.5.1. <i>Emissions to Surface Water</i> | 10 |
| 3.5.2. <i>Noise</i> | 11 |
| 3.5.3. <i>Dust Deposition</i> | 11 |
| 3.5.4. <i>Groundwater</i> | 12 |
| 4 SITE DEVELOPMENT WORKS | 12 |
| 5. WASTE RECEIVED BY AND CONSIGNED FROM THE FACILITY | 13 |
| 5.1 WASTE HANDLED BY VEOLIA ENVIRONMENTAL SERVICES IN THE CORK REGION | 13 |
| 5.1.1 WASTE COMPOSITION | 13 |
| 5.2 UNACCEPTABLE WASTE..... | 14 |
| 6 ENVIRONMENTAL INCIDENTS AND COMPLAINTS | 15 |
| 6.1 INCIDENTS SUMMARY | 15 |
| 6.2 COMPLAINTS SUMMARY | 15 |
| 7 ENVIRONMENTAL MANAGEMENT PLAN | 16 |
| 7.1 REPORT | 16 |
| 7.1.1 <i>Schedule of Environmental Objectives and Targets</i> | 16 |
| <i>Air Emissions</i> <i>OBT.4.1</i> | 17 |
| <i>Water Emissions</i> <i>OBT.4.2</i> | 18 |
| <i>SITE INFRASTRUCTURE</i> <i>OBT 4.3</i> | 19 |
| <i>Site Management</i> <i>OBT.4.4</i> | 20 |
| <i>Management of Waste Licence</i> <i>OBT.4.5</i> | 21 |
| 7.2 WASTE TRANSFER AND RECYCLING STATION OPERATING PROCEDURE DOCUMENTS | 23 |
| 7.2.1 <i>Standard Operating Procedures</i> | 23 |
| 7.2.2 <i>Emergency Response Procedures</i> | 23 |
| 7.3 MANAGEMENT AND STAFFING STRUCTURE..... | 24 |
| 7.5 FINANCIAL PROVISIONS | 26 |
| 8 TANK AND BUND TESTING | 27 |
| 9 RESOURCE CONSUMPTION SUMMARY | 28 |
| 10. REPORT ON PUBLIC INFORMATION PROGRAMME | 29 |
| 11. APPENDIX1 | <u>31</u> |

1 INTRODUCTION

Veolia Environmental Services (Ireland) Ltd., (Veolia) hold a Waste Licence (Reg. No. W0173-1) – issued 9th September 2003 - to operate a Waste Transfer and Recycling Facility at Forge Hill, Kinsale Road, Cork. In accordance with the requirements of Condition 11.6 of the Waste Licence, an Annual Environmental Report (AER) for the facility must be submitted to the Environmental Protection Agency (EPA).

This is the 8th AER, covering the reporting period from January to December 2009.

The facility is located at:

Veolia Environmental Services (Ireland) Ltd,
Waste Transfer and Recycling Facility,
Forge Hill,
Kinsale Road,
Cork.

Tel. (021) 4328028

Fax: (021) 4328029

National Grid co-ordinates for the location of the facility are: E1669, N0687

Veolia Environmental Services Ltd. - Environmental Policy

Veolia Environmental Services (Ireland) Limited is fully committed to the operation of its facilities to the highest environmental standards and fully supports and adheres to that policy.

It is the policy of Veolia Environmental Services (Ireland) Limited to protect the local environment and to minimise the impact of the operation on the environment. To achieve this objective it is committed to:

- Adhering to all relevant environmental legislation and relevant statutory obligations that relate to its activities both on and off site.
- Ensuring that all operations carried out by the company are done in a manner which ensures that environmental protection is taken into account.
- Providing and maintaining site facilities that are designed, constructed, operated and maintained to encompass the principles of good environmental practice.
- Striving to achieve a continuous improvement in efficiency of operations and environmental performance.
- Striving to minimise the quantity of waste disposed of at landfill and increasing the amount of material recycled / recovered.
- Providing environmental information to the community and responding positively to queries or complaints.
- Providing adequate training to all employees on environmental awareness and resource management.

2 DESCRIPTION OF THE SITE

The Waste Transfer and Recycling facility is located at Forge Hill, Kinsale Road, Cork within an area zoned for industrial development. The site location plan is shown in Drawing B.2.1. The facility is surrounded by industrial developments.

Waste handling activities at the facility consist of accepting and bulk loading of commercial, industrial and municipal waste for transfer to a number of approved landfills in Cork. In addition, recyclable waste (cardboard, timber, plastic and metal) are recovered from the waste streams and sent to various recycling companies. The main activity on-site is considered to be the bulk loading and transfer of waste and recyclables.

The licensed waste handling activities, permitted under the Third and Fourth Schedule of the Waste Management Act (1996), in the Waste Licence (173-1) are as detailed below;

Third Schedule, Class 12. Repackaging prior to submission to any activity referred to in a preceding paragraph of this Schedule.

Third Schedule, Class 13. Storage prior to submission to any activity referred to in a preceding paragraph of this Schedule, other than temporary storage, pending collection, on the premises where the waste concerned is produced.

Third Schedule, Class 11. Blending or mixture prior to submission to any activity referred to in a preceding paragraph of this schedule.

Fourth Schedule, Class 2. Recycling or reclamation of organic substances (including composting and other biological transformation processes) which are not used as solvents.

Fourth Schedule, Class 3. Recycling or reclamation of metals and metal compounds.

Fourth Schedule, Class 4. Recycling or reclamation of other inorganic materials.

Fourth Schedule, Class 12. Exchange of waste for submission to any activity referred to in a preceding paragraph of this schedule.

Fourth Schedule, Class 13. Storage of waste intended for submission to any activity referred to in a preceding paragraph of this Schedule, other than temporary storage, pending collection, on the premises where such waste is produced.

Local environmental conditions do not significantly influence the facility. In 2009 the annual rate of precipitation in the area was 1578 mm, which is an increase of 20% over 2008 rainfall. The dominant wind direction fluctuates between North Westerly to South Westerly.

There are 32 people (including drivers) directly employed on a full-time basis at the facility.

3 MONITORING AND EMISSIONS SUMMARY

Environmental monitoring results for the reporting period are outlined in the following sections. An interpretation of the results and impacts on the environment are also presented. A site plan showing the position of each monitoring location is included in Appendix 1.

3.1. Emissions to Surface Water

Site emissions to surface water are addressed in Condition 6.4 and Schedule D.4 of the Waste Licence. The Licence requires that emissions to surface water be measured on a quarterly basis with the exception of heavy metals being measured on a bi-annual basis. The samples are analysed for the parameters indicated in the licence. The samples are taken by Veolia Environmental Services personnel and the analysis was carried out by Environmental Laboratory Services (ELS Ltd), Blackrock Co. Cork.

A summary of the results is given in Table 3.1 below.

Table 3.1 Emissions to Surface Water

| | Spec mg/l | Feb.09 mg/l | April 09 mg/l | July 09 mg/l | Sept 09 mg/l |
|---------------------------------|----------------------|------------------------|--------------------------|-------------------------|-------------------------|
| SS | 60 | <1 | 3 | 5 | 54 |
| FOG | | <1 | 1.6 | 1 | <1 |
| BOD | 25 | <12 | <2 | 2 | 1.8 |
| TPH | | <.05 | <0.01 | <1 | .474 |
| Ammonia-cal Nitrogen | | 0.407 | .486 | .345 | .007 |
| Mineral Oils | 5 | <.05 | <0.01 | <1 | .474 |
| pH | | | 7.6 | 7.5 | 7.6 |
| Heavy metals | | <1 | | <1 | <1 |

3.2. Emissions to Foul Sewer

Site emissions to foul water are addressed in Condition 6.9 and Schedule C.4 of Amendment A to Waste Licence no W0173-01. The Licence requires that emissions to foul water be measured in accordance with schedule D.6. The samples are analysed for the parameters indicated in the licence. The samples are taken by Veolia Environmental Services personnel and the analysis was carried out by Environmental Laboratory Services (ELS Ltd), Blackrock Co. Cork.

Table 3.2 Emissions to Foul water

| | COD | SS | FOG | BOD | Detgts | VOC | Sulphates | Mineral Oil | Hydrocarbon | Heavy Metals |
|-------------|-------------|------------|------------|-------------|---------------|------------|------------------|--------------------|--------------------|---------------------|
| Spec | 4000 | 500 | 40 | 2000 | 10 | 1 | 750 | 5 | 5 | 1 |
| Wk1 | 38 | <1 | | | | | | | | |
| Wk3 | 20 | 22 | | | | | | | | |
| Wk4 | 25 | 44 | <1 | 6 | | | | | | |
| Wk6 | 16 | 1 | - | 5 | <0.1 | ND | 20.9 | <0.05 | <0.05 | <1 |
| Wk11 | 872 | 86 | 5 | 103 | 0.48 | ND | 5.21 | <.05 | <.05 | |
| Wk13 | 39 | 21 | | | | | | | | |
| Wk14 | 32 | 12 | 5 | 6 | | | | | | |
| Wk16 | 9 | 14 | | | | | | | | |
| Wk19 | 76 | 6 | 1.6 | 9 | | | | | | |
| Wk21 | 71 | 18 | 2.7 | 17 | | | | | | |
| Wk23 | 74 | 28 | 4.6 | 12 | .114 | <0.1 | 21.8 | | | |
| Wk25 | 21 | 17 | | | | | | | | |
| Wk29 | 84 | 86 | 1.5 | 19 | | | | | | |
| Wk31 | 50 | <5 | | | | | | | | |
| Wk33 | 45 | 31 | <1 | 23 | | | | | | |
| Wk36 | 27 | 10 | | | | | | | | |
| Wk37 | 207 | 72 | 6.5 | 107 | <0.1 | na | 18.4 | <10ug/l | 4.7 | <1 |
| Wk39 | 19 | 23 | | | | | | | | |
| Wk40 | 149 | <5 | | | | ND | | | | |
| Wk42 | 87 | 39 | 1 | 28 | | | | | | |
| Wk44 | 48 | 14 | | | | | | | | |
| Wk46 | 26 | 11 | <1 | 4 | | | | | | |
| Wk48 | 72 | 26 | | | | | | | | |
| Wk50 | 8 | 5 | 1 | 3 | 0.5 | ND | <1 | | | |
| Wk52 | 127 | 34 | | | | | | | | |

Formatted: Tabs: Not at 6"

3.3. Noise

As required in Schedule D.3 of Waste Licence 173-1, noise monitoring was undertaken on the 3rd and 4th September 2009. Ambient monitoring results are presented in Table 3.3. Octave band analysis was also carried out to determine whether tonal or impulsive noise components existed as a result of the on-site activities.

Table 3.3 Noise Monitoring Results Summary

| Location | Point Location Ref. | Sound Pressure dB(A) | | | | | |
|------------|-------------------------------|----------------------|------------|---------|------------|---------|------------|
| | | L(A)EQ | | L(A)10 | | L(A)90 | |
| | | Daytime | Night-time | Daytime | Night-time | Daytime | Night-time |
| B1 | Boundary | 58 | 49 | 150 | 52 | 48 | 41 |
| B2 | Boundary | 63 | 61 | 66 | 65 | 55 | 50 |
| B3 | Boundary | 64 | 48 | 150 | 58 | 55 | 45 |
| B4 | Boundary | 56 | 51 | 150 | 54 | 51 | 47 |
| NS1 | Nearest NSL ^{Note 1} | 74 | 65 | 78 | 66 | 58 | 42 |

Note 1: Nearest Noise Sensitive Location.

The Emission Limit Values specified in the Waste Licence 173-1, Schedule C.1 were 55 dB (A) for daytime and 45 dB (A) for night-time activities.

Audible tonal component were detected for a number of frequencies at all of the monitoring locations B1, B2, B3 and B4.

3.4. Dust Monitoring

Three dust monitoring surveys were carried out during the period January to December 2009 in accordance with Schedule D.2 of Waste Licence 173-1. Results of this monitoring are presented in Table 3.4.

Table 3.4 Dust Monitoring Results

| Date | Results (mg/m ² /day) | | | | Waste Licence 173-1 (mg/m ² /day) ELV'S |
|------------------|----------------------------------|------|-------|-------|--|
| | ST1 | ST2 | ST3 | ST4 | |
| June/July | 59.6 | 90 | 169 | 66.7 | 350 |
| Aug/Sept | 37.3 | 60.6 | 276.1 | 275.4 | 350 |
| Oct/Nov | 79.6 | 136 | 375 | 294 | 350 |

3.5 Groundwater Monitoring

Groundwater monitoring was carried twice at location GWM1, during the reporting period January to December 2009, in compliance with the conditions of licence W0173-1. Results of the monitoring are detailed in Table 3.5.

No significant levels were detected during monitoring.

Table 3.5 Groundwater Monitoring Results

| Date | Total Petroleum Hydrocarbons mg/L | Ammoniacal Nitrogen mg/L | Heavy Metals mg/L | Visual Inspection |
|-------------------|--|---------------------------------|--------------------------|--------------------------|
| Sept. 2009 | <.001 | .001 | <.1 | Brown turbid |
| May 2009 | <.001 | <0.01 | <0.2 | Brown turbid |

3.6 Interpretation of Monitoring Results

3.6.1. Emissions to Surface Water

In Waste Licence 173-1 specific trigger levels and emission limit values are set in Condition 6.4 and Schedule C.3. The results indicate that the limits were not exceeded during this sampling period.

3.6.2. Emissions to Foul Water

Emissions limit values are set in Schedule C.4 of Amendment A to Waste Licence 173-01. The daily totalised flow exceeded the 60m³ limit on eight occasions. It is our belief that the majority of the exceedances reported are false readings and due to pooling issues and delayed flow. We believe that modifications to our flow monitoring equipment have addressed the problem. The temperature of the flow was exceeded on the 7th August. All of these exceedances were reported and commented upon in our Quarterly reports.

3.6.3. Noise

The results of the noise measurements carried out show that the site is located in a high noise environment. Traffic noise during both day and night-time monitoring was a significant source of noise at all of the measurement locations.

The environmental noise assessment carried out at the site examined the background noise in the region and the noise generated by the waste management operations on the site. The following conclusions have been reached:

- The site is located in a high noise area, where traffic noise dominates.
- The nearest noise sensitive location (NS1) is subject to significant traffic noise passing on the Forge Hill road and this overrides any noise impact from the facility.
- The on-site monitoring locations B1, B2, B3 and B4 are affected by trucks passing through the yard.

In general, the noise emissions from the site are consistent with the general noise regime in the area. During the daytime, there were a diffuse range of noise sources from the industrial area around the site particularly from the high volumes of traffic in the area. The main noise source on-site was from truck movements in the yard. No noise was audible from the waste transfer building. The dominant noise source in the locality, however, was from traffic on the adjacent Forge Hill road and Kinsale Road.

One third octave band analysis was measured at each location during the daytime noise survey and are reported in Appendix 2. There are tonal components detected at all of the monitoring locations, B1, B2, B3 and B4, in particular at 630Hz and 1 KHz. Tonal components were also detected whilst measuring at NS1. A hoist was in operation at the adjoining building to NS1. There was no audible noise from the Veolia site and as the dominant noise source was the traffic on Forge Hill then the tonal component is considered to be traffic derived.

3.6.4. Dust Deposition

Results indicate that the dust deposition levels were in excess of the ELV at sampling point ST3 for one of the three monitoring periods. This was reported to the Agency in our communication referenced WL-Let EPA- 14/09/173-01.

3.6.5. *Groundwater*

Results indicate that there were no elevated levels detected during either monitoring event. There was no evidence of hydrocarbon or heavy metal contamination on either occasion.

4 **SITE DEVELOPMENT WORKS**

No development works at the site carried out during the reporting period.

The site achieved certification to the following management systems in December 2008:

**ISO 14001:2004
ISO 9001:2000
OSHAS18001**

5. WASTE RECEIVED BY AND CONSIGNED FROM THE FACILITY

5.1 Waste Handled by Veolia Environmental Services, Cork

5.1.1 Waste Composition

The majority of the waste accepted at the Waste Transfer and Recycling Facility is Commercial and Industrial Waste collected by Veolia Environmental Services and its subcontractors. A fraction of this waste (< 1% of transferred waste) is derived from domestic premises (mainly apartments). Limited quantities of Construction and Demolition waste are also accepted on-site. All waste is non-hazardous. The waste received at the facility during the reporting period (January to December) amounted to approximately 35K tonnes, which is well within the limit of 82,000 tonnes per annum set in Waste Licence W0173-1. The relative quantities of waste accepted into the facility and during the reporting period are summarised below in Table 5.1.

Waste collected and brought to the Waste Transfer and Recycling Facility may be disposed of in licensed approved landfills. Large quantities of recyclable materials (principally timber, plastic, paper and cardboard) are sent to various recycling facilities for further processing. The relative quantities of waste removed from the facility for disposal / recycling during the reporting period are also summarised in Table 5.1.

Table 5.1 Waste Types –accepted & removed

| Waste | EWC Code # | Weight Accepted Tonnes | Weight Removed Tonnes |
|-----------------|------------|---------------------------|--------------------------|
| Mixed Municipal | 20 03 01 | 14,853 | 12,375 |
| Mixed C&D | 17 01 07 | 364 | 1,269 |
| Plastic | 15 01 02 | 159 | 749 |
| Cardboard | 15 01 01 | 4,121 | 8,811 |
| Glass | 15 01 07 | 264 | 245 |
| Metal | 20 01 40 | 39 | 317 |
| Timber | 20 01 38 | 866 | 1,172 |
| Mixed packaging | 15 01 06 | 14,308 | 9,578 |
| Others | | 28 | 217 |
| Total | | 35,001 | 34,736 |

5.2 Unacceptable Waste

Throughout 2009 there were some items of waste that was deemed to be unacceptable and/or hazardous according to the Waste Acceptance Register which would have been removed to the Waste Quarantine Area prior to removal off-site for correct handling and/or proper disposal. The bulk of this was butane gas bottles, some carbon dioxide and oxygen bottles. The gas bottles were returned to Calorgas

6 ENVIRONMENTAL INCIDENTS AND COMPLAINTS

6.1 Incidents Summary

Condition 11.2 of Waste Licences 173-1 requires that the licensee shall make written records of environmental incidents. A total of ten category 3 incidents (eight flow exceedances and one Temperature exceedance for the foul water and one Dust exceedance) were recorded during the reporting period. All of these were noted and reported accordingly.

6.2 Complaints Summary

All complaints received at the facility are acknowledged, replied to verbally and/ or in writing and recorded in the Complaints file on-site. No complaints were received for the reporting period January to December 2009.

7 ENVIRONMENTAL MANAGEMENT PLAN

7.1 Report

In compliance with Condition 2.3 of the Waste Licence and for the implementation of ISO14001 an Environmental Management System was established (EMS) in 2008. The EMS is to be reviewed and updated on an annual basis and will be submitted to the Agency

Site operational procedures are described in the EMP and the management and staffing structure has been updated to reflect current appointments at the facility. The report summarises the procedure by which members of the public can obtain information, at all reasonable times, concerning the environmental performance of the facility.

It is anticipated that the ownership of the Company will change during 2010 and will influence the management and staffing of the Company and also affect the Objectives and targets described in this report.

7.1.1 Schedule of Environmental Objectives and Targets

A detailed Schedule of the Environmental Objectives and Targets for the forthcoming years was submitted with the AER in 2008 and a summary of their status is provided in Table 7.1.

The overall responsibility for achieving these objectives and targets lies with the Managing Director of VEOLIA ENVIRONMENTAL SERVICES (Ireland) Ltd. Items referred to within these objectives are site specific and are the combined responsibility of the operational team. These are effectively complete and will not be further reported in future AERs.

Environmental Objectives and Targets have also been derived during the ISO14001 management process. The majority of these have been achieved. However those which are not yet completed are shown in Table 7.2 and will remain as targets for 2010.

Table 7.1. Environmental Objectives and Targets proposed by VEOLIA ENVIRONMENTAL SERVICES (Ireland) Limited

Air Emissions OBT.4.1

| Activity/ Emission | Objective | Target | Target Date | Person Responsible | Status |
|-----------------------|---|---|---|--------------------------------------|-----------|
| Dust | To reduce any dust being generated from the site. | Construct and maintain waste transfer and recycling building. Cover remaining hardcore areas of the facility. | Completed September 2007 | Regional Manager/Operations Manager/ | Completed |
| | | Cease transfer of waste using the mobile transfer unit. | Once construction is fully completed by August 2008, the waste transfer yard will be totally concreted. | Regional Manager/Operations manager | Complete |
| Litter | Minimize windblown litter at the facility and its surrounds. | Cease utilising mobile transfer unit. | Ceased operation in September 2007 | Regional Manager/Operations Manager | Complete |
| Odours | Eliminate unpleasant odours originating at the facility and avoid odour related complaints. | Cease utilising mobile transfer unit. and commence operations indoors. | New waste transfer building has been operating since the end of September 2007 | Regional Manager/Operations Manager | |

Water Emissions

OBT.4.2

| Activity/ Emission | Objective | Target | Target Date | Person Responsible | Status |
|----------------------------|---|---|----------------------------------|---|-----------|
| Emissions to Surface Water | Improve Surface Water Emissions from the Facility | Completion of SW drainage network and completion of concreting/tarmacing of yard. | August 2008 | Regional Manager/ Operations Manager | Completed |
| Foul Water Emissions | Discharge foul water to the public sewerage system. | Acquire ELV'S from Cork County Council | Agreed with CCC in November 2007 | Environmental Manager | Complete |
| | | Technical amendment to licence by Agency | Received January 2008 | Environmental Manager | Complete |
| | | Sampler and flow meter to be acquired | By end of March 2008 | Environmental Manager | Complete |
| | | Install FW monitoring point. | By end of March 2008 | Environmental Manager | Complete |
| | | Install and set up monitoring equipment | By end of March 2008 | Environmental Manager | Complete |

Site Infrastructure

OBT 4.3

| Activity/ Emission | Objective | Target | Target Date | Person(s) Responsible | Status |
|-------------------------------|--|--|---|-------------------------------------|---------------|
| Facility Infrastructure | Complete upgrading of the transfer and recycling facility. | Complete concreting of hardcore areas of facility. | December 2008 | Operations Manager/Regional Manager | All complete |
| | | Construct new transfer building. | Completed & Operational since the end of September 2007 | Operations Manager/Regional Manager | |
| | | Construct new recycling building | August 2008 | Operations Manager/Regional Manager | |
| | | Complete FS and SW drainage networks | December 2008 | Operations Manager/ | |

Site Management

OBT.4.4

| Activity/ Emission | Objective | Target | Target Date | Person Responsible | Status |
|---------------------------------|---|--|--------------------|--|--|
| Environmental Management System | Improve the environmental management system | To obtain ISO 14001 accreditation for environmental management system | November 2008 | Regional Manager/Depot Manager/ Environmental Manager | Accreditation Certified in December 2008 Complete |
| Recycling | Increase quantity of material recycling at the facility | Have new recycling building operational Explore other outlets for recycling | December 2008 | Ops Manager/ Regional Manager | Significant improvement in recovery/recycling figures for 2008 |
| Housekeeping | Improve general housekeeping in Facility | Concrete remaining areas in yard Cease use of MTU | December 2008 | Ops manager | Ongoing |

Management of Waste Licence

OBT.4.5

| Activity/ Emission | Objective | Target | Target Date | Person Responsible | Status |
|-------------------------------|------------------|---|--|---------------------------|-----------------------|
| Waste Licence | Training | Environmental awareness training Continue with relevant environmental training. | All yard operatives and drivers received this training annually | Environment Manager | Completed for 2009 |

Table 7.2 Objectives for 2010

| Activity | Objective | Target | Target Date | Person(s) Responsible | Status |
|-------------------------|---|---|--------------------|------------------------------|-------------------------------|
| Energy usage | Continue the promotion of energy efficiencies. | Complete Energy audit <ul style="list-style-type: none"> • Low energy lighting • New climate controls have been installed with new build | December 2010 | Ops Manager | Ongoing |
| Water usage | Identify opportunities for reducing water usage | <ul style="list-style-type: none"> • Track usage • Recover/reuse water from storm water tank & other sources | Dec 2010 | Ops Manager | Ongoing – limited opportunity |
| Office recycling | Minimise waste output from office | Generate a measurable reduction <ul style="list-style-type: none"> • Print both sides • Use recycled paper for drafts • Paperless office | Dec 2010 | Ops Manager | |
| EMS | Maintain regulatory compliance(WL & WCP) | Target is 50% reduction on non compliances year on year | Dec 2010 | Env. Man | |

7.2 Waste Transfer and Recycling Station Operating Procedure Documents

Documented operating procedures for the facility, which are described in detail in the Environmental Management System are sub-divided as follows:-

- Standard Operating Procedures
- Emergency Response Procedure

A brief summary of these is provided below.

7.2.1 Standard Operating Procedures

Standard Operating Procedures have been developed for each of the routine operations conducted at the facility. The purpose of these is to ensure that routine tasks are carried out in the same manner each time they are undertaken, irrespective of the operator. Their implementation will encourage quality as well as safe work practices. Regard is also had for the site specific Safety Statement when carrying out any operations at the facility.

The routine operations identified are as follows:

- Delivery and handling of waste in the waste reception area.
- Loading of Waste into transfer trailers
- Housekeeping
- Environmental Monitoring

7.2.2 Emergency Response Procedures

Condition 9.2 of the Waste Licence requires that a set of Emergency Response Procedures (ERP) be implemented at the facility. A document describing these procedures will be submitted to the Agency with this AER. This procedure is updated as required by the facility. Emergencies have been defined as unexpected events, which prohibit the transfer operation or reduce transferring capacity, or any occurrence resulting in non-compliance with the conditions of the Waste Licence. Potential emergencies at the facility can be grouped under the following headings:-

- Unable to load waste to transfer trailers
- Unable to transfer waste to Landfill and/or Waste Baling Station
- Threats to worker health and safety
- Threats to the environment

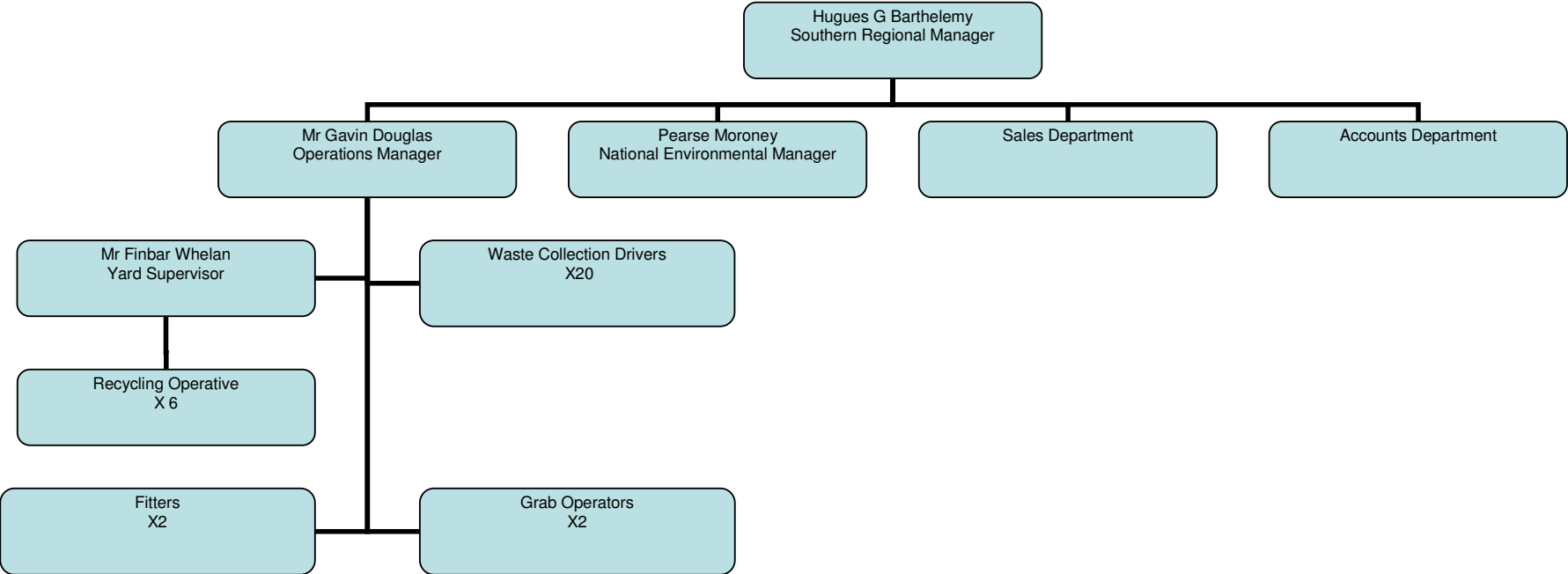
The ERP document, which is maintained in the Operating Manager's office, contains detailed procedures and a list of emergency contact numbers to be used in the event of an emergency.

7.3 Management and Staffing Structure

The organisational structure for the facility is shown in Figure 7.1. Each of the positions identified in Figure 7.1 are discussed in detail in Section 10 of the Environmental Management Plan for the reporting year. Details of the relevant experience and qualifications for each person named, as well as arrangements for absence in the case of annual leave, illness and other reasons, are maintained in the offices of Veolia Environmental Services Ltd. and have previously been forwarded to the Agency as required by Condition 2.2.1.

A file consisting of training records for each employee is also maintained in the offices of Veolia Environmental Services Ltd.

Figure 7.1 Organisational Structure and Staffing Levels for the site



7.4 Report on Financial Provisions

An Environmental Liabilities Risk Assessment was forwarded to the Agency on the 26th July 2004.

This report recommended that the installation of a preliminary environmental liabilities pollution cover of €187,950 (excluding VAT) in the form of bond, financial allocation or an insurance premium would guarantee that potential liabilities arising from:

- Emergency situations occurring during operation of the site
- Closure and decommissioning of the site

are financially provided for. This was reconfirmed to the Agency in October 2008.

8 TANK AND BUND TESTING

Condition 3.12.5 of the Waste Licence 173-1 required that tank and bund testing be carried out at least once every three years. It has been agreed with the Agency that there is no such testing required for the fire water retention tank.

9 RESOURCE CONSUMPTION SUMMARY

Resources consumed at the facility include electricity, diesel fuel, hydraulic oil, steel wire, water, and cleaning agents/disinfectants/odour control solutions. The major consumers of energy at the facility are as follows:

- Baling and ancillary equipment (Electricity, Hydraulic Oil)
- Road Fleet for waste transfer (Diesel).

Energy and resource consumption at the facility can be summarised as follows:

| | |
|---------------------|-------------------|
| • Diesel Fuel | 360K litres |
| • Hydraulic Oil | 1,000 Litres |
| • Engine Oil | 150 Litres |
| • Electricity | 132,480 KW/hr |
| • Odour Neutraliser | 500 Litres |
| • Heating oil | 32K Litres |
| • Water | 581m ³ |

10. REPORT ON PUBLIC INFORMATION PROGRAMME

A programme for public information is in place. During the reporting period there were no requests from members of the public to inspect any of the records and files listed in the submission, only requests from commercial customers.

The list of documents available for inspection is as follows:

- Training Records
- Incident Reports
- Communication Records
- Environmental Monitoring Results
- Complaints Register
- Non-Compliance Records
- Corrective Action Records
- Unacceptable Waste Records
- Pest/Vermin Control Records
- Maintenance Records for all machinery
- Daily transactions for incoming and outgoing vehicles
- Waste Licence
- Waste Licences of Facilities receiving Waste from Veolia Environmental Services
- Veolia Environmental Services Safety Statement
- Communications Folder
- Environmental Management Plan
- Storm and Foul Sewer line Inspection Reports
- Emergency Response Procedures
- Facility Inspection Reports
- Nuisance Inspection Records
- Environmental Procedures
- Tonnage Records
- Recycling Information
- Material Safety Data Sheets

Members of the public who wish to inspect these files may do so at any reasonable time by making an appointment with the Operations Manager using the telephone number posted on the main facility entrance sign erected in accordance with Condition 3.3.

The names of the appropriate personnel are as follows:

Mr. Gavin Douglas

Operations Manager

Pearse Moroney

National Environment Manager

Appendix 1
Monitoring Locations



AER Returns Worksheet

Version 1.1.10

| | |
|-----------------------|------|
| REFERENCE YEAR | 2009 |
|-----------------------|------|

1. FACILITY IDENTIFICATION

| | |
|----------------------------|---|
| Parent Company Name | Veolia Environmental Services (Ireland) Limited |
| Facility Name | Veolia Environmental Services (Ireland) Limited |
| PRTR Identification Number | W0173 |
| Licence Number | W0173-01 |

| Waste or IPPC Classes of Activity | |
|---|---|
| No. | class name |
| 3.12 | Repackaging prior to submission to any activity referred to in a preceding paragraph of this Schedule. |
| 3.11 | Blending or mixture prior to submission to any activity referred to in a preceding paragraph of this Schedule. |
| 3.13 | Storage prior to submission to any activity referred to in a preceding paragraph of this Schedule, other than temporary storage, pending collection, on the premises where the waste concerned is produced. |
| 4.12 | Exchange of waste for submission to any activity referred to in a preceding paragraph of this Schedule. |
| 4.13 | Storage of waste intended for submission to any activity referred to in a preceding paragraph of this Schedule, other than temporary storage, pending collection, on the premises where such waste is produced. |
| 4.2 | Recycling or reclamation of organic substances which are not used as solvents (including composting and other biological transformation processes). |
| 4.3 | Recycling or reclamation of metals and metal compounds. |
| 4.4 | Recycling or reclamation of other inorganic materials. |
| Address 1 | Forge Hill |
| Address 2 | Kinsale Road |
| Address 3 | Cork |
| Address 4 | |
| Country | Ireland |
| Coordinates of Location | -8.48191 51.8703 |
| River Basin District | IESW |
| NACE Code | 3821 |
| Main Economic Activity | Treatment and disposal of non-hazardous waste |
| AER Returns Contact Name | Garrett Walsh (W0173) |
| AER Returns Contact Email Address | garrett.walsh@greenstar.ie |
| AER Returns Contact Position | Environmental Officer |
| AER Returns Contact Telephone Number | 051 333946 |
| AER Returns Contact Mobile Phone Number | 086 1705034 |
| AER Returns Contact Fax Number | 051 333945 |
| Production Volume | 0.0 |
| Production Volume Units | |
| Number of Installations | 0 |
| Number of Operating Hours in Year | 0 |
| Number of Employees | 0 |
| User Feedback/Comments | |
| Web Address | www.greenstar.ie |

2. PRTR CLASS ACTIVITIES

| Activity Number | Activity Name |
|-----------------|---|
| 5(c) | Installations for the disposal of non-hazardous waste |
| 5(c) | Installations for the disposal of non-hazardous waste |
| 50.1 | General |

3. SOLVENTS REGULATIONS (S.I. No. 543 of 2002)

| | |
|--|----|
| Is it applicable? | No |
| Have you been granted an exemption? | No |
| If applicable which activity class applies (as per Schedule 2 of the regulations)? | |
| Is the reduction scheme compliance route being used? | |

4.1 RELEASES TO AIR

SECTION A : SECTOR SPECIFIC PRTR POLLUTANTS

| RELEASES TO AIR | | | | | | | | |
|-----------------|------|--------|-------------|----------------------------|------------------|-------------------|------------------------|----------------------|
| POLLUTANT | | METHOD | | | QUANTITY | | | |
| No. Annex II | Name | M/C/E | Method Code | Designation or Description | Emission Point 1 | T (Total) KG/Year | A (Accidental) KG/Year | F (Fugitive) KG/Year |
| | | | | | | 0.0 | 0.0 | 0.0 |

* Select a row by double-clicking on the Pollutant Name (Column B) then click the delete button

SECTION B : REMAINING PRTR POLLUTANTS

| RELEASES TO AIR | | | | | | | | |
|-----------------|------|--------|-------------|----------------------------|------------------|-------------------|------------------------|----------------------|
| POLLUTANT | | METHOD | | | QUANTITY | | | |
| No. Annex II | Name | M/C/E | Method Code | Designation or Description | Emission Point 1 | T (Total) KG/Year | A (Accidental) KG/Year | F (Fugitive) KG/Year |
| | | | | | | 0.0 | 0.0 | 0.0 |

* Select a row by double-clicking on the Pollutant Name (Column B) then click the delete button

SECTION C : REMAINING POLLUTANT EMISSIONS (As required in your Licence)

| RELEASES TO AIR | | | | | | | | | | |
|-----------------|------|--------|-------------|--|------------------|------------------|------------------|------------------|-------------------|----------------------|
| POLLUTANT | | METHOD | | | QUANTITY | | | | | |
| Pollutant No. | Name | M/C/E | Method Code | Designation or Description | ST1 | ST2 | ST3 | ST4 | T (Total) KG/Year | F (Fugitive) KG/Year |
| | | | | | Emission Point 1 | Emission Point 2 | Emission Point 3 | Emission Point 4 | | |
| 210 | Dust | M | PER | Average daily dust deposition for each monitoring point (German Engineering Institute VDI2119) x 1/4 surface area of site (4 x monitoring points) x 365 days | 65.17 | 105.83 | 302.83 | 234.89 | 708.72 | 0.0 |

* Select a row by double-clicking on the Pollutant Name (Column B) then click the delete button

Additional Data Requested from Landfill operators

For the purposes of the National Inventory on Greenhouse Gases, landfill operators are requested to provide summary data on landfill gas (Methane) flared or utilised on their facilities to accompany the figures for total methane generated. Operators should only report their Net methane (CH4) emission to the environment under T(total) KG/yr for Section A: Sector specific PRTR pollutants above. Please complete the table below:

| | | | | | |
|---|---|-------|-------------|----------------------------|-------------------------------------|
| Landfill: | Veolia Environmental Services (Ireland) Limited | | | | |
| Please enter summary data on the quantities of methane flared and / or utilised | T (Total) kg/Year | M/C/E | Method Code | Designation or Description | Facility Total Capacity m3 per hour |
| Total estimated methane generation (as per site model) | 0.0 | | | | N/A |
| Methane flared | 0.0 | | | | 0.0 (Total Flaring Capacity) |
| Methane utilised in engine/s | 0.0 | | | | 0.0 (Total Utilising Capacity) |
| Net methane emission (as reported in Section A above) | 0.0 | | | | N/A |

4.2 RELEASES TO WATERS

SECTION A : SECTOR SPECIFIC PRTR POLLUTANTS

| RELEASES TO WATERS | |
|--------------------|------|
| POLLUTANT | |
| No. Annex II | Name |
| | |

* Select a row by double-clicking on the Pollutant Name (Column B)

SECTION B : REMAINING PRTR POLLUTANTS

| RELEASES TO WATERS | |
|--------------------|------|
| POLLUTANT | |
| No. Annex II | Name |
| | |

* Select a row by double-clicking on the Pollutant Name (Column B)

SECTION C : REMAINING POLLUTANT EMISSIONS (as required in your Licence)

| RELEASES TO WATERS | |
|--------------------|------|
| POLLUTANT | |
| Pollutant No. | Name |
| | |

* Select a row by double-clicking on the Pollutant Name (Column B)

Data on ambient monitoring of storm/surface water or groundwater, conducted as part of your licence requirements, should N

| M/C/E | | Method Used | | Emission Point 1 | T (Total) KG/Year |
|-------|--|-------------|----------------------------|------------------|-------------------|
| | | Method Code | Designation or Description | | |
| | | | | 0.0 | 0.0 |

) then click the delete button

| M/C/E | | Method Used | | Emission Point 1 | T (Total) KG/Year |
|-------|--|-------------|----------------------------|------------------|-------------------|
| | | Method Code | Designation or Description | | |
| | | | | 0.0 | 0.0 |

) then click the delete button

| M/C/E | | Method Used | | Emission Point 1 | T (Total) KG/Year |
|-------|--|-------------|----------------------------|------------------|-------------------|
| | | Method Code | Designation or Description | | |
| | | | | 0.0 | 0.0 |

) then click the delete button

OT be submitted under AER / PRTR Reporting as this only concerns Releases from your facility

| QUANTITY | |
|------------------------|----------------------|
| A (Accidental) KG/Year | F (Fugitive) KG/Year |
| 0.0 | 0.0 |

| QUANTITY | |
|------------------------|----------------------|
| A (Accidental) KG/Year | F (Fugitive) KG/Year |
| 0.0 | 0.0 |

| QUANTITY | |
|------------------------|----------------------|
| A (Accidental) KG/Year | F (Fugitive) KG/Year |
| 0.0 | 0.0 |

4.3 RELEASES TO WASTEWATER OR SEWER

SECTION A : PRTR POLLUTANTS

| OFFSITE TRANSFER OF POLLUTANTS DESTINED FOR WASTE-WATER TREATMENT OR SEWER | | | | | | | | | |
|--|------|--------|-------------|----------------------------|------------------|-------------------|------------------------|----------------------|-----|
| POLLUTANT | | METHOD | | | QUANTITY | | | | |
| No. Annex II | Name | M/C/E | Method Used | | Emission Point 1 | T (Total) KG/Year | A (Accidental) KG/Year | F (Fugitive) KG/Year | |
| | | | Method Code | Designation or Description | | | | | |
| | | | | | | 0.0 | 0.0 | 0.0 | 0.0 |

* Select a row by double-clicking on the Pollutant Name (Column B) then click the delete button

SECTION B : REMAINING POLLUTANT EMISSIONS (as required in your Licence)

| OFFSITE TRANSFER OF POLLUTANTS DESTINED FOR WASTE-WATER TREATMENT OR SEWER | | | | | | | | | |
|--|-------------------------------------|--------|-------------|----------------------------|------------------|-------------------|------------------------|----------------------|-----|
| POLLUTANT | | METHOD | | | QUANTITY | | | | |
| Pollutant No. | Name | M/C/E | Method Used | | FW1 | T (Total) KG/Year | A (Accidental) KG/Year | F (Fugitive) KG/Year | |
| | | | Method Code | Designation or Description | Emission Point 1 | | | | |
| 303 | BOD | M | PER | Standard | | 187.55 | 187.55 | 0.0 | 0.0 |
| 306 | COD | M | PER | Standard | | 639.51 | 639.51 | 0.0 | 0.0 |
| 308 | Detergents (as MBAS) | M | PER | Standard | | 1.85 | 1.85 | 0.0 | 0.0 |
| 314 | Fats, Oils and Greases | M | PER | Standard | | 18.97 | 18.97 | 0.0 | 0.0 |
| 366 | Hydrocarbons | M | PER | Standard | | 11.41 | 11.41 | 0.0 | 0.0 |
| 324 | Mineral oils | M | PER | Standard | | 0.26 | 0.26 | 0.0 | 0.0 |
| 343 | Sulphate | M | PER | Standard | | 95.98 | 95.98 | 0.0 | 0.0 |
| 240 | Suspended Solids | M | PER | Standard | | 179.99 | 179.99 | 0.0 | 0.0 |
| 347 | Total heavy metals | M | PER | Standard | | 6.42 | 0.0 | 0.0 | 0.0 |
| 237 | Volatile organic compounds (as TOC) | M | PER | Standard | | 0.71 | 0.71 | 0.0 | 0.0 |

* Select a row by double-clicking on the Pollutant Name (Column B) then click the delete button

4.4 RELEASES TO LAND

SECTION A : PRTR POLLUTANTS

| RELEASES TO LAND | |
|------------------|------|
| POLLUTANT | |
| No. Annex II | Name |
| | |

* Select a row by double-clicking on the Pollutant Name (Column B)

SECTION B : REMAINING POLLUTANT EMISSIONS (as required in your Licence)

| RELEASES TO LAND | |
|------------------|------|
| POLLUTANT | |
| Pollutant No. | Name |
| | |

* Select a row by double-clicking on the Pollutant Name (Column B)

| METHOD | | | |
|--------|-------------|----------------------------|------------------|
| M/C/E | Method Used | | Emission Point 1 |
| | Method Code | Designation or Description | |
| | | | 0.0 |

) then click the delete button

| METHOD | | | |
|--------|-------------|----------------------------|------------------|
| M/C/E | Method Used | | Emission Point 1 |
| | Method Code | Designation or Description | |
| | | | 0.0 |

) then click the delete button

| QUANTITY | |
|-------------------|------------------------|
| T (Total) KG/Year | A (Accidental) KG/Year |
| 0.0 | 0.0 |

| QUANTITY | |
|-------------------|------------------------|
| T (Total) KG/Year | A (Accidental) KG/Year |
| 0.0 | 0.0 |

5. ONSITE TREATMENT & OFFSITE TRANSFERS OF WASTE

| PRTR# : W0173 | Facility Name : Veolia Environmental Services (Ireland) Limited | Filename : W0173_2009(1).xslm | Return Year : 2009 |

02/06/2010 08:22

| Transfer Destination | European Waste Code | Hazardous | Quantity (Tonnes per Year) | Description of Waste | Waste Treatment Operation | Method Used | | Location of Treatment | Haz Waste : Name and Licence/Permit No of Next Destination Facility | Haz Waste : Address of Next Destination Facility | Name and License / Permit No. and Address of Final Recoverer / Disposer (HAZARDOUS WASTE ONLY) | Actual Address of Final Destination i.e. Final Recovery / Disposal Site (HAZARDOUS WASTE ONLY) |
|----------------------|---------------------|-----------|----------------------------|--|---------------------------|-------------|-------------|-----------------------|---|---|--|--|
| | | | | | | M/C/E | Method Used | | Haz Waste : Name and Licence/Permit No of Recover/Disposer | Non Haz Waste : Address of Recover/Disposer | | |
| To Other Countries | 15 01 01 | No | 613.0 | Cardboard & Paper Packaging | R3 | M | Weighed | Abroad | Nurendale Ltd T/A Panda Waste,IRE/G079/08 |,China | | |
| To Other Countries | 15 01 01 | No | 774.0 | Cardboard & Paper Packaging | R3 | M | Weighed | Abroad | Harmon Intl,IRE/G020/08 |,China | | |
| To Other Countries | 15 01 01 | No | 1167.0 | Cardboard & Paper Packaging | R3 | M | Weighed | Abroad | Veolia-Proprete,IRE/AG065/08 |,China | | |
| To Other Countries | 15 01 01 | No | 1506.0 | Cardboard & Paper Packaging | R3 | M | Weighed | Abroad | Nam,IRE/G022/08 |,China | | |
| To Other Countries | 15 01 01 | No | 207.0 | Cardboard & Paper Packaging | R3 | M | Weighed | Abroad | Peute Papier,IRE/G006/08 |,Netherlands | | |
| To Other Countries | 15 01 01 | No | 1243.0 | Cardboard & Paper Packaging | R3 | M | Weighed | Abroad | Parry & Evans,IRE/G011/08 |,China | | |
| To Other Countries | 15 01 01 | No | 1132.0 | Cardboard & Paper Packaging | R3 | M | Weighed | Abroad | FBI-Eastbound,IRE/G131/08 |,China | | |
| To Other Countries | 15 01 01 | No | 790.0 | Cardboard & Paper Packaging | R3 | M | Weighed | Abroad | Highlander,IRE/G034/08 |,Netherlands | | |
| To Other Countries | 15 01 01 | No | 1379.0 | Cardboard & Paper Packaging | R3 | M | Weighed | Abroad | Boost Recycling,IRE/G082/08 |,United Kingdom | | |
| To Other Countries | 15 01 02 | No | 71.0 | Plastic Packaging | R3 | M | Weighed | Abroad | AWS Ecoplastics,IRE/G009/08 |,China | | |
| To Other Countries | 15 01 02 | No | 75.0 | Plastic Packaging | R3 | M | Weighed | Abroad | Choice Waste Management,IRE/AG050/08 |,China | | |
| Within the Country | 15 01 02 | No | 290.0 | Plastic Packaging | R3 | M | Weighed | Offsite in Ireland | WF Recycling Ltd,Reg No 934,(Cork City Council) | Centre Park Rd,Marina Walk,Cork,.,Ireland | | |
| Within the Country | 15 01 02 | No | 313.0 | Plastic Packaging | R3 | M | Weighed | Offsite in Ireland | Asian Eagle Ltd,CK(S)522/08 | Courtstown IE, Little Island,Cork,.,Ireland | | |
| Within the Country | 15 01 06 | No | 440.0 | Mixed Packaging | R3 | M | Weighed | Offsite in Ireland | Veolia Environmental Services (Ireland) Ltd,W0082-02 | Dock Road,.,Limerick,.,Ireland | | |
| Within the Country | 15 01 06 | No | 9014.0 | Mixed Packaging | R3 | M | Weighed | Offsite in Ireland | Killarney Waste Disposal Ltd,W0217-01 | Aughacurreen,.,Killarney ,Co Kerry,Ireland | | |
| Within the Country | 15 01 06 | No | 124.0 | Mixed Packaging | R3 | M | Weighed | Offsite in Ireland | IPR (Panda) Ltd,WPR 021/02 |,Dublin,Dublin 12,Ireland | | |
| Within the Country | 20 03 01 | No | 4869.0 | Mixed municipal waste | D1 | M | Weighed | Offsite in Ireland | Cork County Council,W0068-02 | Landfill,.,Youghal,Co Cork,Ireland | | |
| Within the Country | 20 03 01 | No | 166.0 | Mixed municipal waste | D1 | M | Weighed | Offsite in Ireland | Cork City Council,W0012-01 | Landfill,Kinsale Road ,Cork City,.,Ireland | | |
| Within the Country | 20 03 01 | No | 7340.0 | Mixed municipal waste | D1 | M | Weighed | Offsite in Ireland | Greenstar Ltd,W0178-01 | Landfill,.,Ballinasloe,Co Galway,Ireland | | |
| Within the Country | 20 01 38 | No | 45.0 | Timber pallets (Chep - Returned) | R11 | M | Weighed | Offsite in Ireland | CHEP Pallets Ltd,N/A |,Cork City,.,Ireland | | |
| Within the Country | 20 01 38 | No | 52.0 | Timber pallets (for shredding) | R3 | M | Weighed | Offsite in Ireland | CTO Greenclean,WFP-CK-09-0018-02 | Rostellan,.,Midleton,Co Cork,Ireland | | |
| Within the Country | 20 01 38 | No | 1075.0 | Timber pallets | R3 | M | Weighed | Offsite in Ireland | Waste Recovery Services,W0107-01 | Cullenagh,Fermoy,.,Co Cork,Ireland | | |
| Within the Country | 20 01 40 | No | 100.0 | Metals | R4 | M | Weighed | Offsite in Ireland | One51 - Cork Metal Company,CK(S)491/07 | Dublin Hill,.,Cork,Co Cork,Ireland | | |
| Within the Country | 20 01 40 | No | 202.0 | Metals | R4 | M | Weighed | Offsite in Ireland | Pouladuff Dismantlers Ltd,CK(S)478/07 | Forge Hill,Pouladuff Road,Cork,Co Cork,Ireland | | |
| Within the Country | 20 01 40 | No | 15.0 | Metals | R4 | M | Weighed | Offsite in Ireland | KMK Metals Ltd,W0133-03 | Cappincur IE,Daingean Rd,Tullamore,Co Offaly,Ireland | | |
| Within the Country | 17 01 07 | No | 45.0 | Mixed C&D bricks, tiles, ceramics | R5 | M | Weighed | Offsite in Ireland | John A Woods Ltd,CK(S)88/04 | Ballygarvan,.,Cork,Co Cork,Ireland | | |
| Within the Country | 17 01 07 | No | 1224.0 | Mixed C&D bricks, tiles, ceramics | R5 | M | Weighed | Offsite in Ireland | Mallow Contracts Ltd,CK(N)277/05 | Mourneabbey,.,.,Co Cork,Ireland | | |
| Within the Country | 17 08 02 | No | 14.0 | Plasterboard | R5 | M | Weighed | Offsite in Ireland | Mallow Contracts Ltd,CK(N)277/05 | Mourneabbey,.,.,Co Cork,Ireland | | |
| Within the Country | 15 01 07 | No | 245.0 | Glass bottles | R5 | M | Weighed | Offsite in Ireland | Clare Glass Recycling Ltd,004/08/WBP/CL (Clare Co Co) | Tullagower Quarry,.,Kilrush,Co Clare,Ireland | | |
| Within the Country | 20 01 36 | No | 4.0 | WEEE | R4 | M | Weighed | Offsite in Ireland | Cappincur IE,Daingean Rd,Tullamore,Co Offaly,Ireland | | | |
| Within the Country | 20 02 02 | No | 203.0 | Soil & stones (for trommelling and removal of confidential papers) | R5 | M | Weighed | Offsite in Ireland | KMK Metals Ltd,W0133-03 | Six Cross Roads Business Park,Carrignard,Waterford City,.,Ireland | | |

* Select a row by double-clicking the Description of Waste then click the delete button