

ANNUAL ENVIRONMENTAL REPORT

2009

for

WALLACE RECYCLING LTD,

UNIT 14/17 MULLINGAR BUSINESS PARK, MULLINGAR,

CO. WESTMEATH

**WASTE LICENCE REGISTER NO: W0197-01 SUPERSEDED BY
W0197-02 from 12th October 2009**

ANNUAL ENVIRONMENTAL REPORT 2009
WALLACE RECYCLING LTD

CONTENTS

A. Introduction	2
B. Technical Amendment & other changes	3
C. Environmental Policy Statement	4
D. Organisational Chart	5
1. Summary Information	6
1.1 Emissions from facility	6
1.1 Dust monitoring	6
1.2 Emissions to sewer	6
1.3 Noise monitoring	8
2. Waste Management Activities	11
2.1 Waste Types	11
2.2 Waste Management Record 2009	13
3. Resource Consumption Summary	22
4. Environmental Incidents & Complaints	23
5. Schedule of objectives & targets and EMP	25
6. EMP - proposal for 2010	26
7. Pollution emission register	27
8. Drawing of monitoring locations (if amended)	27
9. Tank & pipeline testing & inspection report	27
10. Energy efficiency audit report summary	28
11. Report of the assessment of the efficiency of use of raw materials in processes & the reduction of waste generated	28
12. Report on progress made & proposals being developed to minimise water demand & the volume of trade effluent discharge	28
13. Development/ Infrastructure works summary (completed in the previous yr or prepared for the current yr.)	29
14. Reports on management & staffing structure of the facility, and a programme for public information	29
15. Review of closure, restoration & aftercare management plan	30
16. Environmental liabilities statement	31
17. Any other items specified by the EPA	31
<i>Appendices</i>	
<i>Appendix 1. Monitoring locations</i>	
<i>Appendix 2. Monitoring locations for Noise survey 2009</i>	
<i>Appendix 3. Recycling & Disposal Schedule</i>	

A. INTRODUCTION:

This is the fourth annual environmental report for Wallace Recycling Ltd, Unit 16/17 Mullingar Business Park, Mullingar, Co. Westmeath in relation to the Waste Licence WO197-01 issued on 14th September 2005, amendment WO 197-01 S42B (1) Amendment A granted on 11th July 2007) and as per the new licence WO197-02 issued 12th October 2009. This report covers the twelve months of the calendar year for 2009.

The Wallace Recycling Facility is located in an Industrial area of Mullingar Business Park, Co. Westmeath. Michael & Linda Wallace have successfully operated Wallace Recycling Ltd at the current site since 2000. The licensed area now encompasses approximately 2.00 acres. Wallace Recycling Ltd is the only EPA waste licensed facility in County Westmeath; as such it is a key facility in terms of compliance with the requirements of the Waste Management Plan for the Midlands region. Wallace Recycling provide waste management and recycling services to most of County Westmeath and surrounding counties.

Wallace Recycling have continually improved their waste and recycling facility through the introduction of new plant, IT facilities, buildings and the provision of a civic amenity area to facilitate the public when the nearby Marlinstown facility closed at the start of 2007.

The content of the AER is based on Schedule F of the Waste Licence and the report format follows guidelines set in the "Guidance Note for Annual Environmental Report" issued by the Environmental Protection Agency.

The Waste Licence allowed Wallace Recycling Ltd to accept Household, Commercial & Industrial and Construction & Demolition non-hazardous waste and End of Life vehicles on-site or dispatch from site between the hours of 07:30 to 19:30 Monday to Saturday inclusive. The facility is licensed to be operated during the hours of 07:00 to 23:00 Monday to Saturday inclusive.

The various waste streams are processed and stored on-site pending removal to authorised off-site recycling and disposal facilities. The annual waste throughput is limited to 50,000 tonnes.

Waste is mechanically sorted and segregated via a Trommel and semi automatic picking line; larger items are picked by hand. Sorted recyclable material is further processed at the facility i.e. shredded or baled prior to being transported off-site for recovery.

Non-recyclable waste is stored on site prior to being transported off-site for disposal at licensed facilities.

Wallace Recycling Ltd services include:

- Mini, Standard, Open/Closed Skip Hire;
- Roll-on, Roll-off Skip Hire;
- Domestic Tag-A-Bin refuse/recycling kerbside collection;
- Recycling (Bags) Kerbside collection;
- Commercial & Industrial Bin collections;
- Office Recycling collections;
- Authorised Treatment Facility (ATF) for End of Life Vehicles
- A centrally located one-stop-shop waste transfer station.

B. TECHNICAL AMENDMENT & OTHER CHANGES:

A Technical Amendment was approved in 2007, along with some other changes which allow for the following amendments to the Waste Licence WO-197-01:

1. Extension of site boundary:

The adjacent facility is used to store empty waste receptacles, containers full of recyclables awaiting collection, containers of green waste, glass, white goods etc and for additional staff car parking. The use of the adjacent facility for storage of skips, waste and private vehicles will improve our overall capacity, facilitate better utilisation of the existing facility through improved housekeeping and ensure a safer working environment for all concerned.

2. Extension of opening hours:

The granted extension of hours is as follows:

“Waste shall be accepted at the facility only between the hours of 07:30 to 19:00 Monday to Saturday inclusive.

The facility shall be operated only during the hours of 07:00 to 23:00 Monday to Saturday inclusive.”

3. Acceptance of ELVs

In December 2007 the EPA sent documentation confirming that Wallace Recycling is permitted to accept ELVs.

4. Effluent Monitoring Frequency

The frequency of monitoring of COD, BOD, Suspended Solids, Oils, Fats & Greases and DRO were seen by Wallace Recycling Ltd as particularly onerous. Having reviewed a selection of IPC licences available on the EPA website, the normal frequency for monitoring of water emissions would appear to be quarterly.

This has been highlighted and discussed with the EPA Inspectors on a number of occasions and was also raised as a non-conformance during an EPA audit (W0197-01)06AR01LOS carried out on 13th November 2006. A schedule for testing of the sewer emissions on a weekly basis was agreed during this audit and the results of this sampling are shown in Table 3.2 below.

On the 26th February 2007 correspondence was sent to the EPA Inspector requesting a review of the frequency of sewer emission monitoring. A meeting was held with two members of the EPA enforcement section on 22nd March 2007 to progress this issue.




A change to the effluent sampling frequency was granted, allowing for sampling to take place once per annum for all parameters.

OTHER CHANGES:

A full Waste Licence review has been submitted and the new licence granted in October 2009 to encompass waste activities on the whole site.

During 2009 there were a number of resource issues due mainly to staff turnover which included the departing of the Environmental Officer. However a number of new positions have been created and filled in 2009, namely Operations Manager and Credit Controller.

C. ENVIRONMENTAL POLICY STATEMENT



Unit 18/17, Mullingar Business Park,
Mullingar, Co. Westmeath
Tel: 044-47177 Fax: 044-34795
Email: wallaserecycling@eircom.net
Website: www.wallaserecycling.com

Commercial & Domestic: Wheelie Bin Service,
Skip Hire, Waste Management
& Recycling Specialists

ENVIRONMENTAL POLICY STATEMENT

Wallace Recycling Ltd is a recycling and waste management company. Established in 1995, the company is a market leader in providing waste collection and recycling services to domestic, industrial and commercial clients. Wallace Recycling Ltd operate a waste transfer and recycling facility at Mullingar Business Park, Mullingar, Co Westmeath. This site provides facilities for handling and recycling wastes from a wide range of sources.


Wallace Recycling Ltd operations have a positive environmental impact and help Irish households and industry to effectively manage and recycle their wastes. However, we are aware of the need to reduce the environmental impact of waste disposal and the over-reliance of landfill as a waste disposal option.

Consequently, Wallace Recycling Ltd regard recycling, waste minimisation and environmental protection as an ongoing and essential part of our business. We will therefore take all reasonable steps to assist our clients to reduce the quantities of waste disposal to landfill and ensure that our own operations do not have a negative impact on the environment.

Wallace Recycling Ltd will strive to meet these commitments by:

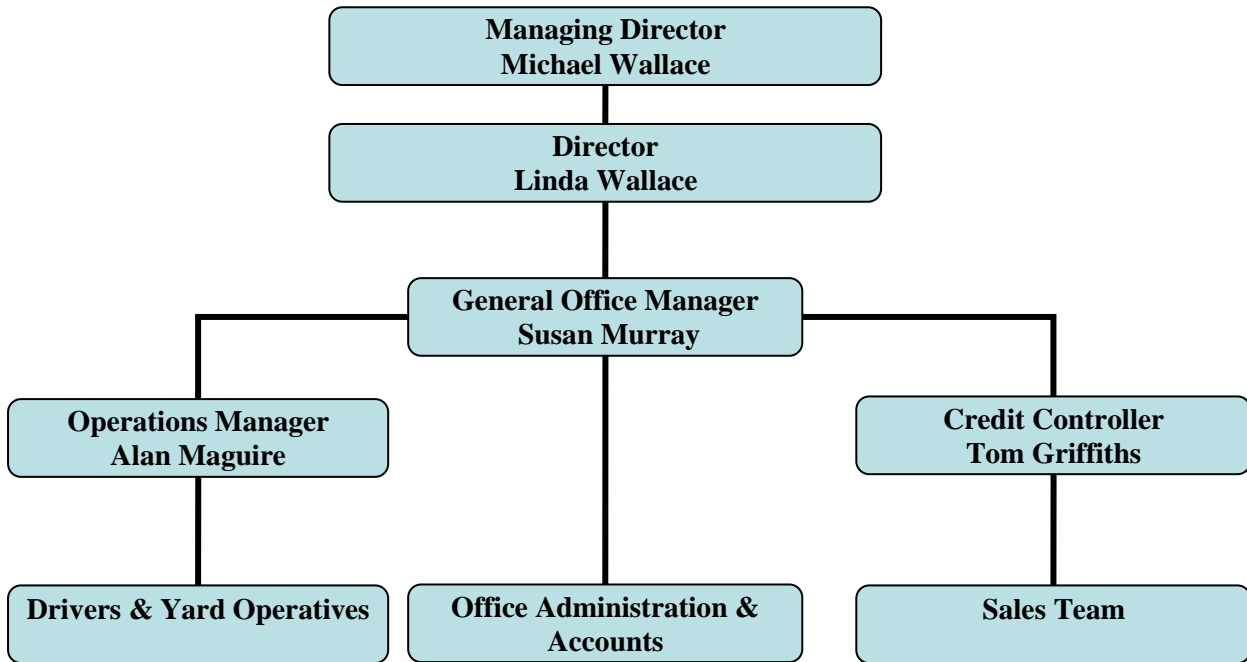
- conforming to relevant environmental standards, licences and legislation relating to our business,
- continually improving our operations by setting and reviewing environmental objectives and targets,
- preventing pollution from our transfer and recycling facility by monitoring and assessing our activities and emissions,
- reviewing options to recycle waste and divert from landfill disposal,
- assisting our clients to segregate and make their wastes available for recycling,
- communicating our environmental policy to all employees and ensuring that they have the knowledge, resources and authority to implement this policy,
- ensuring that the proper managerial, technical and administrative controls shall operate in order to enable this policy to be maintained at all levels,
- making our environmental policy available to the public and interested parties.

Whilst all Wallace Recycling Ltd employees have a duty to ensure that our operations do not cause environmental pollution, the overall responsibility for environmental protection lies with the Managing Director.

Signed: 
Michael Wallace
Managing Director
Wallace Recycling Ltd Date: January 2005

Directors: M. Wallace & L. Wallace Printed on Recycled Paper

D. WALLACE RECYCLING ORGANISATIONAL CHART



1. SUMMARY INFORMATION

EMISSIONS FROM FACILITY

Wallace Recycling Ltd implements an environmental monitoring programme to assess the significance of emissions from our facility activities. The programme includes dust monitoring, emissions to sewer and noise monitoring. The monitoring locations are shown on Drawing No. Map J.1 Site Monitoring Locations in Appendix 1.

An overview of the results of the monitoring is presented in this section, with summary data in tables also included. The results are discussed in the context of the impact of the emissions on the environment and compared with available data on background and/or ambient conditions.

1.1 Dust Monitoring

Wallace Recycling Ltd is required to conduct quarterly dust monitoring using the Bergerhoff method at on-site locations (DS-1, DS-2 and DS-3). The licence requirement to monitor dust on a quarterly basis was not fully met as monitoring fell behind schedule after the departure of the Environmental Officer.

The monitoring that was conducted for dust in 2009 showed that the dust deposition limit (350 mg/m³/day) was not exceeded at any of the monitoring locations. The results of the dust monitoring performed are included in Table 1.1 below.

Table 1.1 Results of Dust Monitoring 2009:

Licence Limit mg/m ³ /day	Sampling location	Jan- Mar 09 mg/m ³ /d
350	D1	146.9
350	D2	75.7
350	D3	Sample jar missing

30 day composite sample with the results expressed as mg/m³ /day.

A programme has been put in place to ensure dust levels are monitored each quarter as required in 2010. Dust monitoring conducted previously has indicated that the dust levels were below the dust deposition limit.

1.2 Emissions to Sewer Monitoring

Schedule C C.3.2 Monitoring of Emissions to Sewer of W0-197-01 initially stated that the following parameters must be monitored:

Volume to be emitted: Maximum in any 1 day: 10m³; Maximum rate per hour: 5m³

Parameter	Monitoring Frequency	Analysis Method/ Technique
<i>Flow</i>	<i>Continuous</i>	<i>On-line flow meter with recorder</i>
<i>Temperature</i>	<i>Continuous</i>	<i>On-line temperature probe with recorder</i>
<i>pH</i>	<i>Continuous</i>	<i>pH electrode/meter and recorder</i>
<i>Chemical Oxygen Demand</i>	<i>Daily</i>	<i>Standard method</i>
<i>Biochemical Oxygen Demand</i>	<i>Weekly</i>	<i>Standard method</i>
<i>Suspended Solids</i>	<i>Monthly</i>	<i>Gravimetric</i>
<i>Oils, Fats & Greases</i>	<i>Monthly</i>	<i>Standard method</i>
<i>Diesel Range Organics</i>	<i>Monthly</i>	<i>Standard method</i>

The frequency of monitoring of COD, BOD, Suspended Solids, Oils, Fats & Greases and DRO in W0-197-01 were seen by Wallace Recycling Ltd as being particularly onerous. Having reviewed a number of IPC licences available on the EPA website, the normal frequency for monitoring of water emissions would appear to be quarterly.

This has been highlighted and discussed with the EPA Inspectors on a number of occasions and was also raised as a non-conformance during an EPA audit (W0197-01) 06AR01LOS carried out on 13th November 2006. A schedule for testing of the sewer emissions on a weekly basis was agreed during this audit.

On the 26th February 2007 correspondence was sent to the EPA Inspector requesting a review of the frequency of sewer emission monitoring. A meeting was held with two members of the EPA enforcement section on 22nd March 2007 to progress this issue. A change to the effluent sampling frequency has been granted, allowing for sampling to take place **once per annum** for all parameters.

Effluent monitoring analysis results for 2009 are contained in the table below:

Table 3.2 Emissions to Sewer results 2009:

Parameter	IPC Licence Limit Daily Mean Concentration (mg/l)	Results for 2009
pH	6-8	6.4
BOD	100	35
COD	250	296
Suspended solids	50	44.8
Oils, Fats & Grease	10	2.4
Diesel range organics	2	<0.01mg/l

Licence WO197-02 states that the requirements for emissions to sewer are once again:

Volume to be emitted: Maximum in any 1 day: 10m³; Maximum rate per hour: 5m³

Parameter	Monitoring Frequency	Analysis Method/ Technique
Flow	Continuous	On-line flow meter with recorder
Temperature	Continuous	On-line temperature probe with recorder
pH	Continuous	pH electrode/meter and recorder
Chemical Oxygen Demand	Daily	Standard method
Biochemical Oxygen Demand	Weekly	Standard method
Suspended Solids	Monthly	Gravimetric
Oils, Fats & Greases	Monthly	Standard method
Diesel Range Organics	Monthly	Standard method

The frequency of the required monitoring of COD, BOD, Suspended Solids, Oils, Fats & Greases and DRO are seen by Wallace Recycling Ltd as being particularly onerous and difficult to measure due to a lack of flow. Wallace Recycling are currently preparing a submission to the EPA to address this issue.

1.3 Noise Monitoring

A noise monitoring survey was performed by ORS Environmental Consultants in February 2009. Environmental noise was monitored at the following locations at the Wallace Recycling site on 16th February 2009: N1, N2, N3, N4, N5, N6 and N7. Normal activities were in operation during the day-time survey period. See noise monitoring location map in Appendix 2.

Daytime noise arose on the site from the ingress and egress of vehicles, movement of plant about the site and the generation of process noise from the segregation of waste within the materials recycling building. Other contributing sources included traffic movements on the Mullingar Business Park Road.

During the night-time monitoring period the main source of noise was deemed to be the Mullingar Business Park Road and to a certain degree from the R390.

Noise levels were compared to those as set out in EPA Waste Licence number W0197-01 which states that ambient/daily noise levels should not exceed 55dB LAeq,30min with night time noise levels not exceeding 45dB LAeq,30min at noise sensitive locations.

The licence also states that there should be no clearly audible tonal or impulsive component in the noise emission from the activity at any noise sensitive location. All monitoring locations with the exception of N6 and N7 indicate a breach of the threshold limits as per Waste Licence limits; however it must be noted that the recorded levels are not all attributable to noise generation from the site. The noise levels are typical of such a site located within a busy industrial estate which already has a high existing ambient noise climate.

The recorded noise levels are not indicative of noise levels at sensitive locations and as such should not be taken as a breach in the EPA Waste Licence limits. The noise levels at N1, N2, N3, N4 and N5 are elevated due to the close proximity of monitoring stations to the actual processes on the recycling facility.

The close proximity of monitoring locations N4, N5 and N7 to the traffic movements on the Mullingar Business Park Road also contributed to the recorded levels. Tonal qualities were recorded at N1, N3 and N5 during the day-time survey and are most likely attributable to idling HGV's. No tonal qualities were noticed during the night-time noise survey.

The conclusion was that overall the recorded noise levels are typical of such a site located within a busy industrial estate which already has a high existing ambient noise climate. The recorded noise levels are not indicative of noise levels at sensitive locations and as such should not be taken as a breach in the EPA Waste Licence limits.

Day-Time Noise Measurement Data

Monitoring Location	Time	L _{Aeq,30min} dB(A)	L _{A10,30min} dB(A)	L _{A90,30min} dB(A)	Waste Licence Limit
N1	08:55 – 09:25	68	74	56	55dB(A) L _{Aeq}
N2	09:27 – 09:57	65	66	51	55dB(A) L _{Aeq}
N3	09:59 – 10:29	60	64	53	55dB(A) L _{Aeq}
N4	10:31 – 11:01	63	66	59	55dB(A) L _{Aeq}
N5	12:07 – 12:37	67	68	48	55dB(A) L _{Aeq}
N6	11:03 – 11:33	53	55	41	55dB(A) L _{Aeq}
N7	11:35 – 12:05	52	54	46	55dB(A) L _{Aeq}

Night-Time Noise Measurement Data

Monitoring Location	Time	L _{Aeq,30min} dB(A)	L _{A10,30min} dB(A)	L _{A90,30min} dB(A)	Waste Licence Limit
N5	22:11 – 22:41	49	51	39	45dB(A) L _{Aeq}
N6	23:18 – 23:48	48	44	34	45dB(A) L _{Aeq}
N7	22:43 – 23:13	43	45	36	45dB(A) L _{Aeq}

Day-Time 1:3 Octave Band Analysis

Monitoring Location	1:3 Octave Band Analysis									Impulsive or Tonal qualities
	31 Hz	63 Hz	125 Hz	250 Hz	500 Hz	1K KHz	2K KHz	4K KHz	8K KHz	
N1	73	72	62	57	61	60	56	650	50	Tonal @31.5Hz
N2	64	67	57	56	59	54	43	48	39	None
N3	65	65	61	53	50	49	47	40	30	Tonal @80Hz
N4	60	68	56	53	53	54	52	46	36	None
N5	66	75	65	60	58	60	55	45	36	Tonal @63Hz
N6	62	53	48	47	47	43	39	36	30	None
N7	60	57	49	43	43	42	40	34	28	None

Night-Time 1:3 Octave Band Analysis

Monitoring Location	1:3 Octave Band Analysis									Impulsive or Tonal qualities
	31 Hz	63 Hz	125 Hz	250 Hz	500 Hz	1K KHz	2K KHz	4K KHz	8K KHz	
N5	50	53	41	41	40	40	35	34	23	None
N6	52	48	45	40	39	41	35	26	17	None
N7	50	45	37	35	35	35	31	25	20	None

2. WASTE MANAGEMENT ACTIVITIES

The EPA Waste Licence allows Wallace Recycling Ltd to accept and process on-site for recovery and disposal, 50,000 tonnes of waste per annum, comprising commercial/industrial non-hazardous waste, household waste and construction & demolition wastes. Waste processing takes place inside the waste transfer station building.

The tonnage for incoming waste in 2009 was 21,601 tonnes. Waste outputs were 20,668 tonnes.

2.1 Waste Types

The facility is licensed to accept the following waste types as specified in Part 1 Schedule of Activities Licensed the Waste Licence: -

- Household,
- Commercial & Industrial,
- Construction & Demolition,
- End of life vehicles.

Hazardous waste is not accepted at the facility, with the exception of small quantities of that which inadvertently arrive in waste deliveries, for example batteries. Any materials suspected either to be hazardous or not acceptable under licence conditions (e.g. gas cylinders, chemical drums etc) are temporarily stored on-site in the waste quarantine area, before removal off-site for treatment/disposal at an appropriate facility.

A copy of the list of current authorised facilities used for waste disposal and recycling is included in Appendix 3 - Recycling & Disposal Schedule.

Household, Commercial & Industrial Waste Containing Putrescible Materials

Household, commercial & industrial wastes (originating in factories, hotels, pubs and supermarkets) containing an organic fraction are either deposited on the floor of the transfer building, or tipped directly into open trailers. All the household waste deposited on the floor is either pushed into an open trailer, or compacted for removal off-site for disposal at an off-site landfill, as agreed with the Agency.

Industrial & commercial waste is inspected and segregated into recyclables and non-recyclables. All uncontaminated cardboard and plastic packaging material, which is suitable for baling, is collected for recycling or delivered to authorised recyclers. Tin cans are collected, baled and stored on-site pending removal off-site for recycling. Glass bottles, which are either segregated prior to arrival on-site or deposited at the civic amenity area, are stored on-site pending removal for recycling off-site.

Non Putrescible Household and Commercial Waste

Non putrescible household wastes, arising from the kerbside collection, and non- putrescible commercial/industrial waste is deposited onto the floor of the transfer building and inspected for disposable and/or recoverable fractions. Nonrecyclable/ recoverable wastes are stored within the building before transfer for disposal to an off-site landfill, as agreed with the Agency.

Construction and Demolition Waste

All construction and demolition waste is inspected to determine if it is suitable for transfer and/or recovery. Wood and metal are separated using a mechanical grab and subsequently removed off-site to an approved recovery/recycling facilities. The residual material is passed through a trommel to remove the fine fraction containing subsoil and topsoil. This material is sent for inert landfilling.

Wood, Timber and Green Waste

Wood and timber delivered to and recovered on-site is collected and removed off-site for disposal. Green waste delivered to the facility is stored pending transfer to an offsite composting facility.

Civic Amenity Facilities

There are a number of containers located at the facility, which are provided for use by the general public for deposition of household waste and recyclables including plastic, timber, cans, glass, metals and textiles. The materials collected in these are removed off-site for recovery/recycling.

End of Life vehicles

End of life vehicles are stored on this site pending collection by an authorised contractor for removal and de-pollution off-site.

2.2 Waste Management Record For 2009

In order to improve our data collection systems, Wallace Recycling introduced a new software system in November 2007.

A. HOUSEHOLD WASTE COLLECTED AT KERBSIDE

	EWC CODE	QUANTITY	DESTINATION List the names of the facilities where the waste was brought, including licence/permit number(s)
		HOUSEHOLD (TONNES)	
MIXED RESIDUAL WASTE	20 03 01	7,230	WALLACE RECYCLING LTD W0197-02
MIXED DRY RECYCLABLES	20 03 01; 15 01 06	978	WALLACE RECYCLING LTD W0197-02
Total household waste collected at kerbside in 2009 (tonnes):		8,208.00	

B. WASTE ACCEPTED ONTO WALLACE RECYCLING PREMISES

ID no.	EWC CODE WASTE DESCRIPTION	EWC	WASTE DESCRIPTION	Quantity Accepted On-Site		ACTIVITIES CARRIED OUT ON SITE
				Generated in RoI (tonnes)	Generated abroad (tonnes)	
WASTE FROM MUNICIPAL SOURCES (CHAPTER 20 CODES)						
1	Mixed residual waste (typically black bin)	20 03 01	<i>Mixed residual (black bin) waste from household collection</i>	7,239.31	0.00	Mixed residual waste is segregated (trommel, picking line, magnets) to remove any recyclable materials. Residual waste is then bulked and sent to landfill.
2	Mixed dry recyclables (typically green bin)	20 03 01	<i>Mixed dry recyclables from household and commercial collections</i>	980.82	0.00	Mixed dry recyclables are segregated onsite using a ballistic separator & picking line, into material types. Unrecyclable fraction is sent to landfill as residual waste.
4	<u>Commercial</u> food waste e.g. canteens, restaurants	20 01 08	<i>Commercial Wheelie Bins</i>	461.36	0.00	Mixed residual waste is segregated (trommel, picking line, magnets) to remove any recyclable materials. Residual waste is then bulked and sent to landfill.
5	Paper & cardboard from municipal sources (e.g. office paper, newspaper)	20 01 01	<i>Commercial Recycling Bins</i>	25.30	0.00	Mixed dry recyclables are segregated onsite using a ballistic separator & picking line, into material types. Unrecyclable fraction is sent to landfill as residual waste.
6	Glass from municipal sources	20 01 02	<i>Mixed glass</i>	33.82	0.00	Segregated, Sorted and Stored on Site awaiting transfer
7	Textile waste from municipal sources (e.g. clothing, curtains)	20 01 10 20 01 11	<i>Textiles from municipal sources</i>	20.32	0.00	Segregated, Sorted and Stored on Site awaiting transfer

ANNUAL ENVIRONMENTAL REPORT 2009
WALLACE RECYCLING LTD

ID no.	EWC CODE WASTE DESCRIPTION	EWC	WASTE DESCRIPTION	Quantity Accepted On-Site		ACTIVITIES CARRIED OUT ON SITE
				Generated in RoI (tonnes)	Generated abroad (tonnes)	
10	Mixed batteries from municipal sources	20 01 33*	<i>Mixed Batteries</i>	1.66	0.00	Segregated, Sorted and Stored on Site awaiting transfer
13	Plastic from municipal sources	20 01 39	<i>Plastic Recyclables</i>	14.70	0.00	Segregated, Sorted and Stored on Site awaiting transfer
15	Biodegradable garden & park waste	20 02 01	<i>Green Waste</i>	51.62	0.00	Segregated, Sorted and Stored on Site awaiting transfer
16	Street-cleaning residues	20 03 03	<i>Sweepings</i>	1,074.95	0.00	Segregated, Sorted and Stored on Site awaiting transfer
19	Bulky waste	20 03 07	<i>Skip Waste</i>	8,830.48	0.00	Segregated, Sorted and Stored on Site awaiting transfer
20	Other municipal waste - please specify	20 03 01 - -	<i>Dustbin Waste from Westmeath Co. Council</i>	258.30	0.00	Segregated, Sorted and Stored on Site awaiting transfer
21	Other municipal waste - please specify	20 03 01	<i>Waste from Vehicles in over the weighbridge</i>	311.93	0.00	Segregated, Sorted and Stored on Site awaiting transfer
SOURCE-SEGREGATED PACKAGING WASTE (CHAPTER 15 CODES)						
22	Segregated cardboard & paper packaging (e.g. corrugated cardboards, paper wrapping & bags)	15 01 01	<i>Cardboard/Paper</i>	564.59	0.00	Segregated, Sorted and Stored on Site awaiting transfer
24	Segregated farm films	15 01 02	<i>Plastic Agricultural</i>	12.16	0.00	Segregated, Sorted and Stored on Site awaiting transfer

ANNUAL ENVIRONMENTAL REPORT 2009
WALLACE RECYCLING LTD

ID no.	EWC CODE WASTE DESCRIPTION	EWC	WASTE DESCRIPTION	Quantity Accepted On-Site		ACTIVITIES CARRIED OUT ON SITE
				Generated in RoI (tonnes)	Generated abroad (tonnes)	
WASTE FROM WEEE, BATTERIES & END-OF-LIFE VEHICLES (CHAPTER 16 CODES)						
34	White goods	16 02 14 20 01 36	<i>White goods</i>	12.44	0.00	Segregated, Sorted and Stored on Site awaiting transfer
35	TVs & PC monitors	16 02 13* 20 01 35*	<i>TV's & Monitors</i>	0.26	0.00	Segregated, Sorted and Stored on Site awaiting transfer
37	Other WEEE (e.g. phones, computer equipment, electronic toys, hairdryers, vacuum cleaners)	16 02 14 20 01 36	<i>WEEE</i>	0.30	0.00	Segregated, Sorted and Stored on Site awaiting transfer
39	End-of-life vehicles (not de-polluted)	16 01 04*	<i>ELV's</i>	31.24	0.00	Segregated, Sorted and Stored on Site awaiting transfer
C&D WASTE (CHAPTER 17 CODES)						
57	Wood from C&D waste	17 02 01	Mixed Timber	425.76	0.00	Segregated, Sorted and Stored on Site awaiting transfer
59	Plastic from C&D waste	17 02 03	Mixed Plastic	6.98	0.00	Segregated, Sorted and Stored on Site awaiting transfer
62	Aluminium from C&D waste e.g. window frames, fascia, soffits, gutters, downpipes etc.	17 04 02	Aluminium	0.91	0.00	Segregated, Sorted and Stored on Site awaiting transfer
65	Mixed metals from C&D waste	17 04 07	Mixed Metals	285.31	0.00	
68	Mixed C&D waste	17 09 04	Mixed C&D Filling	820.31	0.00	Segregated, Sorted and Stored on Site awaiting transfer
74	Gypsum-based construction material e.g. Plasterboard	17 08 02	Plasterboard	97.10	0.00	Segregated, Sorted and Stored on Site awaiting transfer

ANNUAL ENVIRONMENTAL REPORT 2009
WALLACE RECYCLING LTD

ID no.	EWC CODE WASTE DESCRIPTION	EWC	WASTE DESCRIPTION	Quantity Accepted On-Site		ACTIVITIES CARRIED OUT ON SITE
				Generated in RoI (tonnes)	Generated abroad (tonnes)	
OTHER - Specify below any materials not listed above. Include relevant EWC code.						
106	Bulky waste	20 03 07	Mattress's Furniture in over the weighbridge	39.93	0.00	Segregated, Sorted and Stored on Site awaiting transfer
Total incoming waste in 2009 (tonnes):				21,601.86		

ANNUAL ENVIRONMENTAL REPORT 2009
WALLACE RECYCLING LTD

C. OUTGOING WASTE (WASTE SENT OFF-SITE FOR RECOVERY, DISPOSAL OR TRANSFER)

WASTE DESCRIPTION	EWC	ID NUMBER	PACKAGING CONTENT (%)	QUANTITY SENT OFF-SITE (TONNES)	NAME & ADDRESS OF <u>NEXT DESTINATION FACILITY</u>	DESCRIPTION OF OPERATION CARRIED OUT BY <u>NEXT DESTINATION FACILITY</u>
Aluminium	17 04 02	19,62	N/A	1.28	A1 Metal Recycling Limited WMP 007	Segregated, Sorted and Processed
Aluminium	17 04 02	19, 62	N/A	0.80	Hammond Lane Athlone WP-173-2008	Segregated, Sorted and Processed
Aluminium	17 04 02	19, 62	N/A	3.90	Erin Recyclers Ltd Sligo WP SO-05-51	Segregated, Sorted and Processed
Batteries	20 01 33*	10, 19	N/A	10.04	Rilta Environmental Ltd Rathcoole WP 0192-02	Disposal of Hazardous Waste
C & I Fines	19 12 12	19	N/A	190.53	Ballydonagh Landfill Athlone W0028-02	Landfill Cover
C & I Fines	19 12 12	19	N/A	2,987.50	Derryclure Landfill Tullamore Licence No W0029-04	Landfill Cover
Cardboard	20 01 01	22	90 % packaging 10 % non- packaging	28.98	Panda Waste Services (Nurendale) WO140-03	Segregated, Sorted and Processed
Cardboard	20 01 01	22	90 % packaging 10 % non- packaging	105.16	Smurfit Recycling Limited	Segregated, Sorted and Processed
Cardboard	20 01 01	22	90 % packaging 10 % non- packaging	280.74	Irish Packaging Recycling Ltd WPR 021/2	Segregated, Sorted and Processed
Cardboard	20 01 01	22	90 % packaging 10 % non- packaging	159.18	Greyhound Recycling Ltd W02205-01	Segregated, Sorted and Processed
Copper	17 04 01	65	N/A	3.26	Erin Recyclers Ltd Sligo WP SO-05-51	Segregated, Sorted and Processed
End of Life Vehicles	16 01 04*	39	N/A	1.04	Hammond Lane Athlone W0079-01	De- pollution and processing
Inert Filling	17 01 07	68	N/A	1,955.88	M Wallace Knockycosker Permitted Site Wp-167-2008	Land Reclamation

ANNUAL ENVIRONMENTAL REPORT 2009
WALLACE RECYCLING LTD

WASTE DESCRIPTION	EWC	ID NUMBER	PACKAGING CONTENT (%)	QUANTITY SENT OFF-SITE (TONNES)	NAME & ADDRESS OF <u>NEXT DESTINATION FACILITY</u>	DESCRIPTION OF OPERATION CARRIED OUT BY <u>NEXT DESTINATION FACILITY</u>
Mixed Municipal Waste	20 03 07	1,4, 19	(not applicable)	197.26	Derryclure Landfill Tullamore Licence No W0029-04	Landfill
Mixed Municipal Waste	20 03 07	1,4, 19	(not applicable)	112.34	Greyhound Recycling Ltd W0205-01	Further Processing for Landfill
Mixed Municipal Waste	20 03 07	1,4, 19	(not applicable)	1,140.54	Corranure Landfill c/o Oxigen W0077-02	Landfill
Glass	20 01 02	1,4, 19	(not applicable)	25.34	Gannon ECO Kilbeggan, Westmeath WFP-WM-2009-0007-01	Mix with Concrete
Glass	20 01 02	6	(not applicable)	7.50	Mullingar Action Group Permit no WFP-WH-2009-0001-01	Further Processing for Recycling
Fluorescent Lamps	20 01 21	19	(not applicable)	0.16	Irish Lamp Recycling	Disposal of Hazardous Waste
Metal	20 01 40	19, 34,65	(not applicable)	10.89	Hammond Lane Athlone WP-173-2008	Metal Recycling
Metal	20 01 40	19,34, 65	(not applicable)	24.38	MSM Recycling WMP02/2008	Metal Recycling
Metal	20 01 40	19,34 ,65	(not applicable)	610.47	Erin Recyclers Ltd Sligo WP SO-05-51	Metal Recycling
Metal	20 01 40	19 , 34 ,65	(not applicable)	9.96	Wilton Waste WP 06/30B	Metal Recycling
Metal	20 01 40	19, 34, 65	(not applicable)	5.14	A1 Metal Recycling Limited WMP 007	Metal Recycling
Paper	20 01 01	2, 22	(not applicable)	49.45	Irish Packaging Recycling Ltd WPR 021/2	Paper Recycling
Paper	20 01 01	2, 22	(not applicable)	4.24	Smurfit Recycling Limited	Paper Recycling
Paper	20 01 01	2, 22	(not applicable)	12.82	Oxigen Ltd, Ballymount, Dublin W0208-01	Paper Recycling
Paper	20 01 01	2, 22	(not applicable)	10.22	Panda Waste Services (Nurendale) WO140-03	Paper Recycling
Plasterboard	17 08 02	74	(not applicable)	24.94	Gypsum Recycling Ltd WMP 238/2006	Recycling

ANNUAL ENVIRONMENTAL REPORT 2009
WALLACE RECYCLING LTD

WASTE DESCRIPTION	EWC	ID NUMBER	PACKAGING CONTENT (%)	QUANTITY SENT OFF-SITE (TONNES)	NAME & ADDRESS OF NEXT DESTINATION FACILITY	DESCRIPTION OF OPERATION CARRIED OUT BY NEXT DESTINATION FACILITY
Plastic	20 01 39	13	90 % packaging 10 % non- packaging	7.26	Greyhound Recycling Ltd W0205-01	Plastic Recycling
Plastic	20 01 39	13	90 % packaging 10 % non- packaging	36.86	Leinster Environmentals Dundalk WP 2008/06	Plastic Recycling
Plastic	20 01 39	13	90 % packaging 10 % non- packaging	11.52	Wheeley Environmental Refuse Services Ltd WCP MO 09 0608 02	Plastic Recycling
Plastic	20 01 39	13	(not applicable)	18.12	Irish Packaging Recycling Ltd WPR 021/2	Plastic Recycling
Hard Plastic	17 02 03	59	(not applicable)	21.80	Irish Packaging Recycling Ltd WPR 021/2	Plastic Recycling
Mixed Recyclables	20 03 01	2	(not applicable)	140.58	Oxigen Ltd, Ballymount, Dublin W0208-01	Further Processing for Recycling
Mixed Recyclables	20 03 01	2	(not applicable)	170.44	AES Ltd, Tullamore EPA NO 104-02	Further Processing for Recycling
Mixed Recyclables	20 03 01	2	(not applicable)	688.60	Wheeley Environmental Refuse Services Ltd WCP MO 09 0608 02	Further Processing for Recycling
Bulky Waste	20 03 07	19	(not applicable)	56.07	Ballydonagh Landfill Athlone W0028-02	Landfill
Bulky Waste	20 03 07	19	(not applicable)	6662.97	Derryclure Landfill Tullamore Licence No W0029-04	Landfill
Bulky Waste	20 03 07	19	(not applicable)	56.44	Corranure Landfill c/o Oxigen W0077-02	Landfill
Bulky Waste	20 03 07	19	(not applicable)	12.74	Wheeley Environmental Refuse Services Ltd WCP MO 09 0608 02	Further Processing
Bulky Waste	20 03 07	19	(not applicable)	3693.53	Greyhound Recycling Ltd W0205-01	Further Processing
Bulky Waste	20 03 07	19	(not applicable)	7.54	Wilton Waste WP 06/30B	Further Processing
Textile	20 01 11	7	(not applicable)	1.62	Textile Recycling Limited WPR 014	Textile Recycling

ANNUAL ENVIRONMENTAL REPORT 2009
WALLACE RECYCLING LTD

WASTE DESCRIPTION	EWC	ID NUMBER	PACKAGING CONTENT (%)	QUANTITY SENT OFF-SITE (TONNES)	NAME & ADDRESS OF <u>NEXT DESTINATION FACILITY</u>	DESCRIPTION OF OPERATION CARRIED OUT BY <u>NEXT DESTINATION FACILITY</u>
Timber	17 02 01	19, 57, 68	(not applicable)	18.58	Oxigen Ltd, Ballymount, Dublin W0208-01	Timber recycling
Timber	17 02 01	19, 57, 68	(not applicable)	1,053.43	Conroy Recycling Ltd, Mullingar WP-152-2006	Timber recycling
Timber	17 02 01	19, 57, 68	(not applicable)	23.08	Greyhound Recycling Ltd W0205-01	Timber recycling
WEEE	20 01 36	19, 34, 35, 37,	(not applicable)	12.94	KMK Recycling Ltd Tullamore W0113-03	WEEE Processing
Total quantity of waste sent off-site in 2009 (tonnes):				20,668.06		

ANNUAL ENVIRONMENTAL REPORT 2009
WALLACE RECYCLING LTD

5. ONSITE TREATMENT & OFFSITE TRANSFERS OF WASTE

Transfer Destination	European Waste Code	Hazardous	Quantity (Tonnes per Year)	Description of Waste	Waste Treatment Operation	Method Used		Location of Treatment	ISIR Waste - Name and Licence/Permit No. of Receiving Facility	ISIR Waste - Name and Licence/Permit No. of Receiving Facility	Name and Licence / Permit No. and Address of Final Receiver / Depositor (HAZARDOUS WASTE ONLY)	Actual Address of Final Destination (i.e. Final Recovery / Disposal Site) (HAZARDOUS WASTE ONLY)
						M/C/E	Method Used		ISIR Waste - Name and Licence/Permit No. of Receiving Facility	ISIR Waste - Address of Receiving Facility		
Within the Country	17 04 02	No	1.28	Aluminium	R4	M	Weighted	Offsite in Ireland	A1 Metal Recycling Limited, WMP 007 Hammond Lane, WP-173-2008	Acragar, Mourmelick, Porthole Co. Lotts, Ireland		
Within the Country	17 04 02	No	0.8	Aluminium	R4	M	Weighted	Offsite in Ireland	Erin Recyclers Ltd, WP 50-05-51	Deepwater Quay, Finskin Sligo Harbour, Sligo, Ireland		
Within the Country	17 04 02	No	3.8	Aluminium	R4	M	Weighted	Offsite in Ireland	Erin Recyclers Ltd, WP 50-05-51	Deepwater Quay, Finskin Sligo Harbour, Sligo, Ireland		
Within the Country	20 01 33	Yes	10.04	Batteries	R4	M	Weighted	Offsite in Ireland	Rita Environmental Ltd, W0192-02	Block 402 Grants Drive, Greenogue Business Park, Rathmore, Dublin, Ireland	Rita Environmental Ltd, W0192-02, Block 402, Greenogue Business Park, Rathmore, Dublin, Ireland	Block 402, Greenogue Business Park, Rathmore, Dublin, Ireland
Within the Country	19 12 12	No	190.53	C&I Fines	D1	M	Weighted	Offsite in Ireland	Ballydonagh Landfill, W0028-02	Landfill, Ballydonagh, Athlone, Westmeath, Ireland		
Within the Country	19 12 12	No	2987.5	C&I Fines	D1	M	Weighted	Offsite in Ireland	Derryclare Landfill, W0029-04	Landfill, Tullamore, Offaly, Ireland		
Within the Country	20 01 01	No	28.06	Cardboard	R3	M	Weighted	Offsite in Ireland	Nurestale Ltd trading as Panda Waste, W0140-03	Rathfringh, Beupers, Navan, Meath, Ireland		
Within the Country	20 01 01	No	385.9	Cardboard	R3	M	Weighted	Offsite in Ireland	Irish Packaging Recycling Ltd, WPR021-01	Woodstock, Dublin, Ireland		
Within the Country	20 01 01	No	109.18	Cardboard	R3	M	Weighted	Offsite in Ireland	Greyhound Recycling Ltd, W0205-01	Estates, Clonsilla, Dublin, Ireland		
Within the Country	17 04 01	No	3.26	Copper	R4	M	Weighted	Offsite in Ireland	Erin Recyclers Ltd, WP 50-05-51	Deepwater Quay, Finskin Sligo Harbour, Sligo, Ireland		
Within the Country	16 01 04	Yes	1.04	ELVs	R4	M	Weighted	Offsite in Ireland	Hammond Lane, WP-173-2008	Garrycastle, Athlone, Westmeath, Ireland	Hammond Lane, WP-173-2008, Garrycastle, Athlone, Ireland	Garrycastle, Athlone, Ireland
Within the Country	17 01 07	No	1855.88	Inert Filling	D1	M	Weighted	Offsite in Ireland	M. Wallace, WP-167-2008	Westmeath, Ireland		
Within the Country	20 03 07	No	197.26	Bulky Waste	D1	M	Weighted	Offsite in Ireland	Derryclare Landfill, W0029-04	Landfill, Tullamore, Offaly, Ireland		
Within the Country	20 03 07	No	112.34	Bulky Waste	D1	M	Weighted	Offsite in Ireland	Greyhound Recycling Ltd, W0205-01	Estates, Clonsilla, Dublin, Ireland		
Within the Country	20 03 07	No	1140.54	Bulky Waste	D1	M	Weighted	Offsite in Ireland	Corriscree Landfill site, W077-02	Davan, Ireland		
Within the Country	20 01 03	No	25.34	Glass	R11	M	Weighted	Offsite in Ireland	Gannon Eco-Kilbeggan WFP, WM-2009-0007-01	Kilbeggan, Westmeath, Ireland		
Within the Country	20 01 02	No	7.5	Glass	R12	M	Weighted	Offsite in Ireland	Mullingar Action Group WFP, WM-2009-0001-01	Mullingar, Westmeath, Ireland		
Within the Country	20 01 21	Yes	0.38	Fluorescent Tubes	R13	M	Weighted	Offsite in Ireland	Irish Lamp Recycling WFP, KE-06-0348-01	Woodstock Industrial Estate, Athy, Kildare, Ireland	Irish Lamp Recycling, COF, KE-06-0348-01, Athy, Kildare, Ireland	Athy, Kildare, Ireland
Within the Country	20 01 40	No	10.88	Metal	R4	M	Weighted	Offsite in Ireland	Hammond Lane, WP-173-2008	Garrycastle, Athlone, Westmeath, Ireland		
Within the Country	20 01 40	No	24.28	Metal	R4	M	Weighted	Offsite in Ireland	MSM Recycling, WMP02/2008	Cockstown, Talaght, Dublin, Ireland		

ANNUAL ENVIRONMENTAL REPORT 2009
WALLACE RECYCLING LTD

Within the Country	20 01 40	No	610.47 Metal	R4	M	Weighted	Offsite in Ireland	Erin Recyclers Ltd, WP 50-05-51	Deepwater Quay, Finiskin, Sligo Harbour, Sligo, Ireland
Within the Country	20 01 40	No	9.96 Metal	R4	M	Weighted	Offsite in Ireland	Wilton Waste, WP 06/30B	Ballyjamesduff, Cavan, Ireland
Within the Country	20 01 40	No	5.14 Metal	R4	M	Weighted	Offsite in Ireland	A1 Metal Recycling Limited, WMP 007	Armagh, Mountslick, Paradise Co. Lanes, Ireland
Within the Country	20 01 01	No	53.69 Paper	R3	M	Weighted	Offsite in Ireland	Irish Packaging Recycling Ltd, WPR021-01	Lower Ballymounst Road, Dublin, 12, Ireland
Within the Country	20 01 01	No	12.82 Paper	R3	M	Weighted	Offsite in Ireland	Oxigen Ltd, WO208-01	Clonsilla, Dublin, 22, Ireland
Within the Country	20 01 01	No	10.22 Paper	R3	M	Weighted	Offsite in Ireland	Neendale Ltd trading as Panda Waste, WO140-03	Rathdrinagh, Beauparc, Navan, Meath, Ireland
Within the Country	17 08 02	No	24.94 Plasterboard	R5	M	Weighted	Offsite in Ireland	Gypsum Recycling Ltd, WMP 236/2006	Dundee, Naas, Kildare, Ireland
Within the Country	20 01 39	No	7.26 Plastic	R5	M	Weighted	Offsite in Ireland	Greyhound Recycling Ltd, WO205-01	Crag Ave, Clonsilla, Industrial Estate, Clonsilla, Dublin, Ireland
Within the Country	20 01 39	No	36.86 Plastic	R5	M	Weighted	Offsite in Ireland	Leinster Environmental, WP2008/06	Dundalk, Ireland
Within the Country	20 01 38	No	11.52 Plastic	R5	M	Weighted	Offsite in Ireland	Whealey Environmental Refuse Services, WCP MO 09 0608 02	Galway, Ireland
Within the Country	20 01 39	No	18.12 Plastic	R5	M	Weighted	Offsite in Ireland	Irish Packaging Recycling Ltd, WPR021-01	Lower Ballymounst Road, Dublin, 12, Ireland
Within the Country	17 02 03	No	21.8 Plastic	R5	M	Weighted	Offsite in Ireland	Irish Packaging Recycling Ltd, WPR021-01	Lower Ballymounst Road, Dublin, 12, Ireland
Within the Country	20 03 01	No	140.58 Mixed dry Recyclables	R5	M	Weighted	Offsite in Ireland	Oxigen Ltd, WO208-01	Clonsilla, Dublin, 22, Ireland
Within the Country	20 03 01	No	170.44 Mixed dry Recyclables	R5	M	Weighted	Offsite in Ireland	Advanced Environmental Solutions Ltd, WO104-02	Cappincur, Tullamore, Offaly, Ireland
Within the Country	20 03 01	No	688.6 Mixed dry Recyclables	R5	M	Weighted	Offsite in Ireland	Whealey Environmental Refuse Services, WCP MO 09 0608 02	Galway, Ireland
Within the Country	20 03 07	No	56.07 Bulky Waste	D1	M	Weighted	Offsite in Ireland	Ballydonagh Landfill, W0028-02	Ballydonagh Landfill, Ballydonagh, Athlone, Westmeath, Ireland
Within the Country	20 03 07	No	6662.97 Bulky Waste	D1	M	Weighted	Offsite in Ireland	Derrycure Landfill, W0029-04	Derrycure Landfill, Tullamore, Offaly, Ireland
Within the Country	20 03 07	No	56.44 Bulky Waste	D1	M	Weighted	Offsite in Ireland	Coranure Landfill c/o Oxigen, WO77-02	Cavan, Ireland
Within the Country	20 03 07	No	12.74 Bulky Waste	R13	M	Weighted	Offsite in Ireland	Whealey Environmental Refuse Services, WCP MO 09 0608 02	Galway, Ireland
Within the Country	20 03 07	No	3693.53 Bulky Waste	R13	M	Weighted	Offsite in Ireland	Greyhound Recycling Ltd, WO205-01	Crag Ave, Clonsilla, Industrial Estate, Clonsilla, Dublin, Ireland
Within the Country	20 03 07	No	7.54 Bulky Waste	R13	M	Weighted	Offsite in Ireland	Wilton Waste, WP 06/30B	Ballyjamesduff, Cavan, Ireland
Within the Country	20 01 11	No	1.62 Textiles	R5	M	Weighted	Offsite in Ireland	Textile Recycling Ltd, WPR 014	Belgard Rd, Tallaght, Dublin, 24, Ireland
Within the Country	17 02 01	No	18.58 Wood	R13	M	Weighted	Offsite in Ireland	Oxigen Ltd, WO208-01	Clonsilla, Dublin, 22, Ireland
Within the Country	17 02 01	No	1053.43 Wood	R13	M	Weighted	Offsite in Ireland	Conroy Recycling Ltd, WP-152-2006	Sonne, Mullingar, Westmeath, Ireland
Within the Country	17 02 01	No	23.06 Wood	R13	M	Weighted	Offsite in Ireland	Greyhound Recycling Ltd, WO205-01	Crag Ave, Clonsilla, Industrial Estate, Clonsilla, Dublin, Ireland
Within the Country	20 01 38	No	12.94 WEEE	R13	M	Weighted	Offsite in Ireland	KMK Metals Recycling Ltd, WO113-03	Cappincur, Tullamore, Offaly, Ireland

* Country within the Republic of Ireland only. Countries not listed are assumed to be Ireland.

3. RESOURCE CONSUMPTION SUMMARY

3.1 Energy consumption.

Energy at the facility is provided using electricity supplied by the ESB and from June 2009 electricity supplied by Bord Gais.

Electricity usage for January to December 2009 based on consumption and cost reports from the ESB and Bord Gais was 40.866 Megawatts, this shows a marginal increase when compared to the 39 Megawatts used in 2008.

An Energy Efficiency Survey was completed in 2008 by PowerTherm Solutions to monitor the energy management system within the company. The audit used the energy consumption figures for the year 2007 and compared them to figures for 2006.

An objective was set for 2009 to reduce the quantity of electricity used per tonne of waste processed by 5%, in order to identify how to achieve these levels of energy reduction a second energy audit was planned to be organised before October 2009. Due to the current recessionary climate this energy audit was postponed and is planned for 2010 as required by the new licence.

3.2 Water Consumption from Municipal Supply.

The water supplied to the site is via mains from the municipal supply managed by Westmeath County Council. Water is not used extensively in the waste transfer process itself; the main consumption of water on-site is through domestic usage, i.e. toilets and canteen, with a certain volume used for the wheel wash.

Westmeath County Council fitted a water meter in the past but it had been covered over and was inaccessible, this meter was made accessible for readings again in October 2006.

Based on the most up to date water meter reading information supplied by Westmeath County Council, the water usage in 2009 was 516m³.

4. ENVIRONMENTAL COMPLAINTS & ENVIRONMENTAL INCIDENTS SUMMARY

4.1 Environmental Complaints:

During 2009 there was 1 formal environmental complaint received from a member of the public via the EPA and 1 other environmental complaint received directly from a customer relating to the services provided by Wallace Recycling Ltd. A procedure is in place to deal with these issues should they arise, the objective being to establish the root cause of the complaint in order to prevent a recurrence.

Odour complaint received via EPA Inspector Mr John Gibbons on 27th March 2009:

Complaint details:

A telephone complaint was received by John Gibbons of the EPA on 27th March 2009 at 10am. Mr Gibbons informed Wallace Recycling Ltd by a letter received on 31st March 2009, that he had received a complaint about bad odour and loose litter from a neighbouring facility. The complaint was received by the EPA at 10am.

On receipt of the complaint the Managing Director of Wallace Recycling contacted John Gibbons to get more information on the complaint. One possible cause of the bad odour could be a build up of general waste on site due to the windy conditions restricting the number of loads into the landfill site in Tullamore. The windy conditions also could have contributed to the loose litter reported by the complainant.

Wallace Recycling were unaware of these problems on the day they occurred and on receipt of the EPAs correspondence about the complaint the issues had been resolved.

Loose Rubbish complaint received directly from a customer on 19th March 2009.

Complaint details:

On Thursday 19th March 2009 at approximately 11 a.m. a customer phoned Wallace Recycling to make a complaint about loose rubbish in her garden after the Wallace Recycling bin collection. On investigation with the bin lorry driver, it transpired that a loose bag of rubbish had been left out by a neighbour on this street and the loose rubbish had originated from this bag. The customer was contacted with the findings.

4.2 Environmental Incidents:

All environmental incidents are recorded on the Incident Report Form; there was one formal incident in 2009 which was reported to the EPA, see summary details below. There is a system in place to ensure that all incidents which could have an environmental impact are reported in writing to the EPA.

Overtured vehicle incident on 12th March 2009, notified to Richard Darcy of Westmeath County Council and John Gibbons of the EPA on 12th March 2009.

Incident details:

On Thursday 12th March 2009 at approx 11.20am an incident occurred on the main Tullamore road out of Mullingar at the Rochfortbridge roundabout. A Wallace Recycling vehicle 97G8602 was transporting general waste from the Wallace Recycling site in Mullingar Business Park to the Offaly County Council landfill in Tullamore. The vehicle overturned onto the left hand side of the grassy area on the roundabout, resulting in rubbish spilling out onto the grass area on the side of the road. The Managing Director and other employees were immediately called to the scene to assist the driver and clean up the rubbish. Richard Darcy of Westmeath County Council was informed of the incident and he arrived to inspect the area. The EPA was also informed.

5. SCHEDULE OF OBJECTIVES & TARGETS AND EMP for 2009

Good progress was made on achieving EMP objectives and targets in 2009.

EMP	Objective	Target	Responsibility	Timescale
1	Continual improvement of EMS & environmental compliance	Develop an internal audit schedule for all EMS processes & procedures.	A.Cleary	Completed
		Internal audits to be carried out throughout the year to ensure all processes/procedures are audited at least once per annum.	A.Cleary	In progress
		Corrective actions to be closed off in a timely manner & resources provided as required.	A.Cleary/ L. Wallace/ M. Wallace	Ongoing
		Refresh all employees on procedures of EMS through training	L. Wallace/ M. Wallace/	Completed Dec 09
2	Facility resource management	Clearly identify all waste water, sewage and surface water gullies, drainage grids, interceptors and manhole covers with permanent paint.	A. Maguire/ M. Wallace	June 2010
		Carry out bund, tank & container integrity testing for diesel tanks. Purchase new double skinned diesel tank	M. Wallace M. Wallace	Incomplete Complete
3	Training & Development	Train Environmental Officer or Yard Manager in an EPA recognised Waste management course as run by FAS. Waste management course is due to commence in September 2009	M.Wallace	Env Officer departed. Op Manager to be trained in 2010
4	Review and improve Documentation System	Review all documentation to ensure it is maintained, filed and up to date for inspection by an enforcement authority	A.Cleary	Completed
		System in place to make files more easily accessible.	A.Cleary	Completed
		Have soft copies of company information as an alternative to hard copies to reduce the quantity of paper within the company.	A.Cleary/M.Wallace	Env Officer departed.
5	Organise to retrain weighbridge operators on operation of weighbridge	Improve weighbridge software for improved accuracy of weighbridge records.	M.Wallace/ A.Cleary	Completed
		Organise for DMC to retrain all weighbridge operators	A.Cleary/ M.Wallace	Completed
		Organise refresher training as required and training of new staff in relation to weighbridge operation.	M.Wallace/ A.Cleary	Completed

EMP- Proposed for 2010

Objectives set were based on the SMART system: Specific, Measurable, Achievable, Realistic and with an agreed Timescale for completion. The objectives were chosen to maximise environmental benefit and the operating efficiency of the facility, taking into account the current business climate. These are outlined below:

EMP	Objective	Target	Responsibility	Timescale
1	Continual improvement of EMS & environmental compliance	Internal audits to be carried out throughout the year to ensure all processes/procedures are audited at least once per annum.	A. Maguire/	Dec 2010
		Corrective actions to be closed off in a timely manner & resources provided as required.	L. Wallace/ M. Wallace	Dec 2010
2	Facility resource management	Complete identification of all waste water, sewage and surface water gullies, drainage grids, interceptors and manhole covers	M. Wallace	June 2010
		Carry out bund, tank & container integrity testing for diesel tanks.	M. Wallace	June 2010
		Organise a risk assessment to determine if fire-water retention facility is needed. Submit report to EPA	M. Wallace	March 2010
3	Training & Development	Train Operations Manager in an EPA recognised Waste management course as run by FAS.	M. Wallace	Sept 2010

7. POLLUTION EMISSION REGISTER.

Wallace Recycling Ltd has been informed by the EPA Inspector, that a Pollution Emission Register is not a requirement for a facility with a Waste Licence such as this.

8. DRAWING OF MONITORING LOCATIONS (IF AMENDED)

Monitoring locations are as per the original Waste Licence W0197-01 application. See Appendix 1 for map of monitoring locations.

9. TANK & PIPELINE TESTING & INSPECTION REPORT

Weekly in-house inspections are carried out of the interceptor, vehicle wash area and the drains at the main entrance and at Bays 1 & 2. The results and corrective actions required are recorded on the 'Weekly On Site Inspections' record. This system for inspection has been in place since 7th January 2005.

Tank & pipeline testing as required by Waste Licence Condition 3.11.5 and Schedule E have not been performed to date. These tests are planned for completion in October 2010.

10. ENERGY EFFICIENCY AUDIT REPORT SUMMARY

An energy audit was performed as required under Condition 7 of the Waste Licence. This was conducted by PowerTherm Solutions on 21st April 2008. Once this audit was completed a programme was developed to achieve energy and cost savings based on the recommendations made.

11. REPORT OF THE ASSESSMENT OF THE EFFICIENCY OF USE OF RAW MATERIALS IN PROCESSES & THE REDUCTION OF WASTE GENERATED

The reduction of wastes is a core part of the Wallace Recycling Ltd business ethos. Segregation systems are in place for the small quantities of waste generated as part of the Wallace Recycling Ltd office processes- segregation of office paper, cardboard and plastic plus the separation of domestic and canteen waste streams. The office recyclables are all processed with the other recyclables in the yard and sent for recycling with licensed waste contractors.

12. REPORT ON PROGRESS MADE & PROPOSALS BEING DEVELOPED TO MINIMISE WATER DEMAND & THE VOLUME OF TRADE EFFLUENT DISCHARGE

In 2006 a water tank was installed under the yard to gather rain water which will be used for the wheel wash. It is planned to install submersible pumps to complete this system in June 2010. This will reduce the volumes of mains water used by the facility.

13. DEVELOPMENT/ INFRASTRUCTURE WORKS SUMMARY

Development/ Infrastructure Works Completed in 2009

The following development works were completed in 2009:

- Adjoining yard was cleared;
- Section of the adjoining yard was concreted;
- Section of the adjoining yard was covered in filings;
- Draining yard was concreted;
- Main sorting Material Recycling Building was closed in completely;
- Roof lights repaired in Material Recycling Building.

Development/ Infrastructure Works Planned for 2010

The following development works are planned for 2010:

- Concrete additional 40 ft x 40ft section of the adjoining yard.

14. REPORTS ON MANAGEMENT & STAFFING STRUCTURE OF THE FACILITY, AND A PROGRAMME FOR PUBLIC INFORMATION

In 2009, the Environmental Officer departed from Wallace Recycling. A review of the organisational structure of the business was carried out by the Directors along with an external consultant. As a result of this review an Operations Manager was recruited in the latter half of 2009, along with a Credit Controller and some additions were also made to the Sales Team.

The General Manager, Operations Manager and Credit Controller are key people in the effective management of Wallace Recycling. These key people meet with the Directors on a weekly basis to discuss, resolve and plan company issues.

Plans are in place for the Operations Manager to attend the FAS waste management course in 2010.

15. REVIEW OF CLOSURE, RESTORATION & AFTERCARE MANAGEMENT PLAN

Wallace Recycling Ltd has operated from the existing facility since 2000. The company extended the site in 2007, with the purchase of the adjoining site, and as such we have no plans to close the facility or decommission the site.

However should operations cease at the site facility in the future, all machinery, plant and stock would either be relocated to an alternative site or sold off. All site wastes would be disposed off appropriately and the site left secured.

Wallace Recycling Ltd will render safe or remove from the site all materials, waste, plant or equipment that could result in a negative environmental impact.

Wallace Recycling Ltd will consider all reasonable requests from the EPA to deposit a security bond in the case of insolvency. This bond could be used to cover the cost of any site decommissioning required.

Aftercare Management Plan

The limited environmental risks associated with the activities at Wallace Recycling Ltd include fire and possible soil, groundwater and surface water contamination.

These limited risks only occur during site operations and Wallace Recycling Ltd do not propose to handle hazardous materials or store wastes on site for long periods of time or dispose of any wastes at the facility itself.

If operations were to cease, the potential environmental risks would be significantly reduced and there would be no expected long-term environmental effects after the site had ceased operating.

Wallace Recycling do not foresee the need for a long term site monitoring or aftercare management plan should current operations at the facility cease.

16. ENVIRONMENTAL LIABILITIES STATEMENT

Having reviewed our process activities it has been concluded that potential future liabilities are considered to be limited to emergency situations such as oil spills and fire. Wallace Recycling Ltd has adopted Emergency Procedures to manage and control such incidents and minimise the associated environmental impacts.

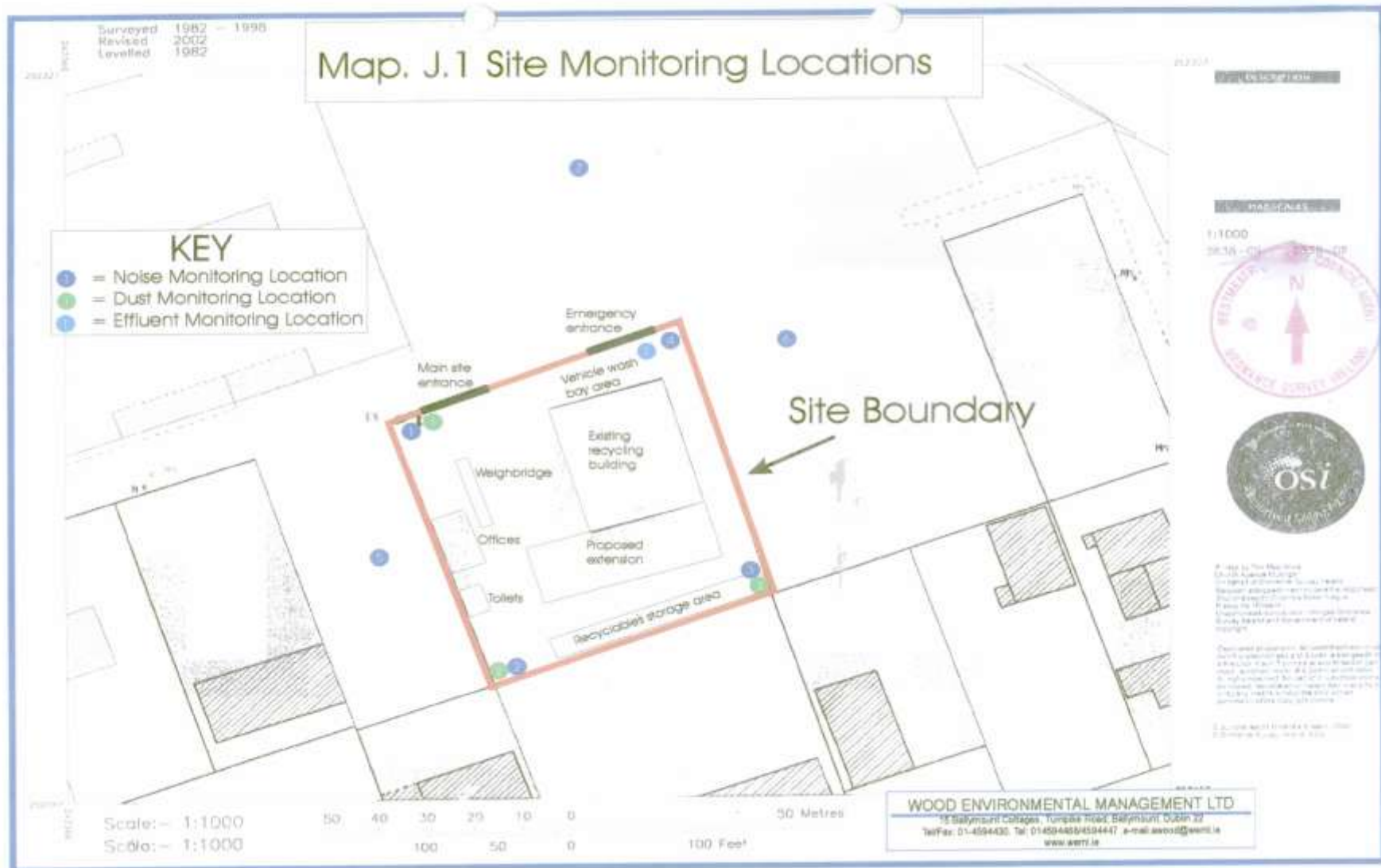
Wallace Recycling Ltd has a cash fund in place to cover any environmental damage caused by Wallace Recycling Ltd activities.

17. ANY OTHER ITEMS SPECIFIED BY THE EPA

None specified.

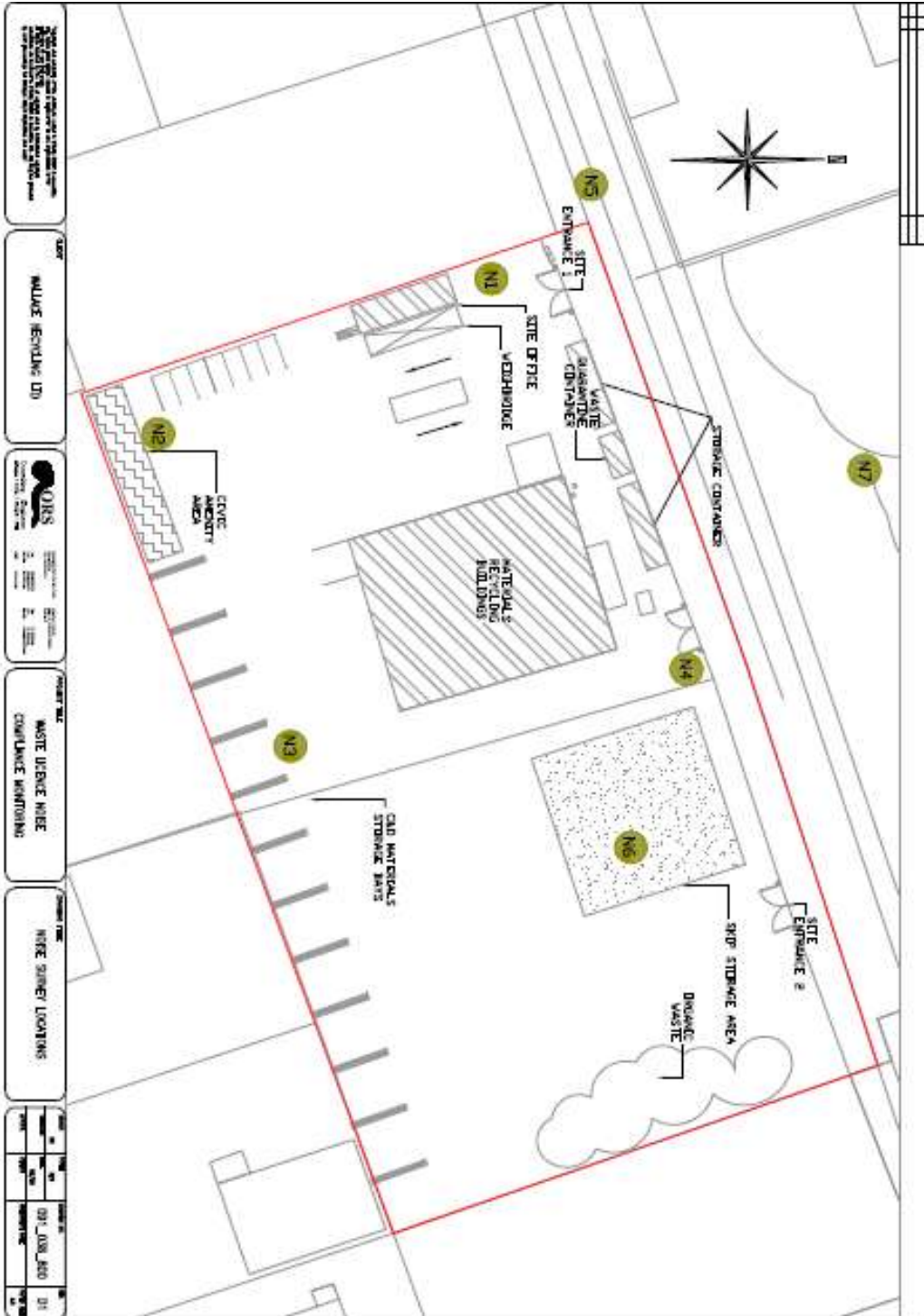
Appendix 1:
Original Monitoring Location Map

ANNUAL ENVIRONMENTAL REPORT 2009
WALLACE RECYCLING LTD



Appendix 2:
Noise Monitoring locations for 2009 Noise
survey

ANNUAL ENVIRONMENTAL REPORT 2009
WALLACE RECYCLING LTD



Appendix 3:
Recycling & Disposal Schedule 2009