

### ATTACHMENT F3 – AIR QUALITY MONITORING AND SAMPLING

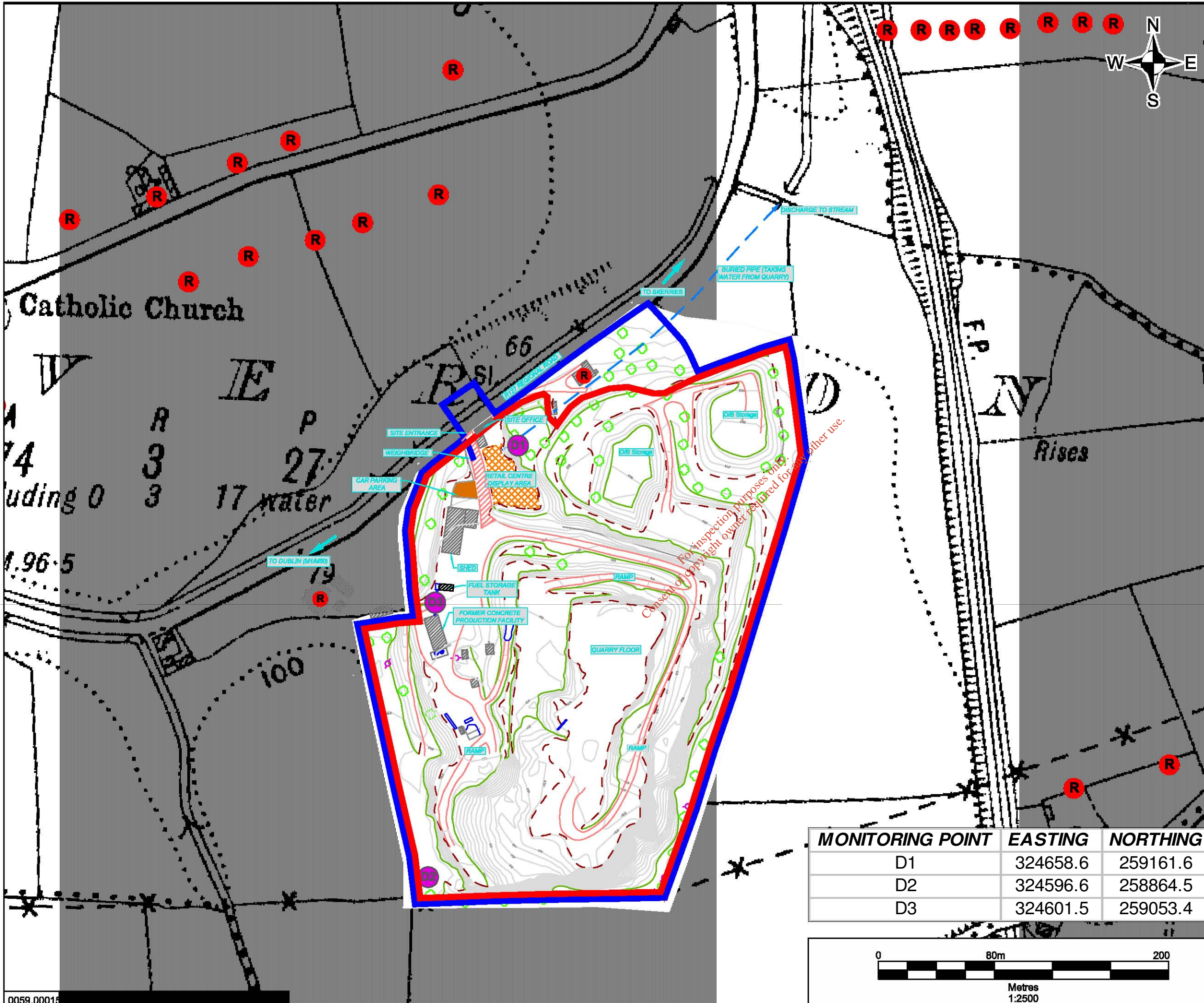
Details of the air quality monitoring and sampling to be undertaken at the proposed waste recovery facility are provided in Section 2.6.2 of the Environmental Impact Statement.

Proposed air quality monitoring locations are shown in Figure F3.1 and Figure 7.1 of the Environmental Impact Statement.

Monitoring Reference No.	Parameter	Monitoring Frequency	Location (Grid Co-ordinates)	Accessibility of Sampling Points
D1	mg/m <sup>2</sup> /day	Quarterly	324659E 259162N	Easy – open ground
D2	mg/m <sup>2</sup> /day	Quarterly	324597E 258865N	Easy- open ground
D3	mg/m <sup>2</sup> /day	Quarterly	324602E 2159053N	Easy – open ground

**Table F3.1 Air Quality (Dust) Monitoring Points**

*For inspection purposes only.  
Consent of copyright owner required for any other use.*



**NOTES**

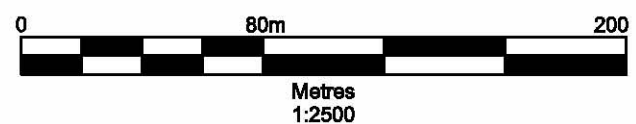
1. Based on OSI 25inch Dublin Sheet No. 5 & 5a
2. Ordnance Survey of Ireland Licence No. SU 0000709 (c) Ordnance Survey of Ireland & Government of Ireland

- LEGEND**
- Applicant's Land Interest (c. 8.6ha)
  - Waste Licence Application Area (c. 7.9ha)
  - D1 Dust Monitoring Locations
  - Buried Pipe
  - Top of Bank
  - Bottom of Bank
  - Road
  - Contour Line
  - Building
  - Internal Unpaved Road
  - Internal Paved Road
  - R Location of Residence

**roadstone**  
 ROADSTONE DUBLIN LTD.  
 FORTUNESTOWN  
 TALLAGHT  
 DUBLIN 24

**SLR**  
 SLR CONSULTING IRELAND  
 7 DUNDUM BUSINESS PARK  
 WINDY ARBOUR  
 DUBLIN 14  
 T: +353-1-2984667  
 F: +353-1-2984676  
 www.slrconsulting.com

MONITORING POINT	EASTING	NORTHING
D1	324658.6	259161.6
D2	324596.6	258864.5
D3	324601.5	259053.4



**ROADSTONE DUBLIN LTD.**  
**WASTE LICENCE APPLICATION**  
**WASTE RECOVERY FACILITY,**  
**MILVERTON, SKERRIES, CO. DUBLIN**  
**AIR QUALITY MONITORING LOCATIONS**

**FIGURE F3.1**

Scale: 1:2,500 @ A3      Date: AUGUST 2009