

# Cork County Council

## Water Services Investment Programme



### Castletownshend Sewerage Scheme



**Planning & Development Act 2000  
Planning and Development Regulations 2001-2006.**

**Manager's Report on Part 8 Planning for Castletownshend  
WWTP, Access Road, Administration Building, Outfalls,  
Pumping Station and Associated Site Works in accordance with  
the provisions of Part 8 of the Planning and Development  
Regulations 2001-2006.**

**June 2008**

**Notice in respect of this Part 8 Planning was published in the Southern Star dated 9<sup>th</sup> February 2008 in accordance with article 81 of the Local Government (Planning and Development) Regulations, 2001 to 2006. The closing date for the receipt of submission and observations was the 11<sup>th</sup> April 2008.**

## **Section 1.0 Description of the Nature and Extent of the Proposed Scheme**

Cork County Council proposes to undertake the following works:

1. The construction of a new Wastewater Treatment Plant, Access Road, Administration Building, Outfall and Associated Site works in Castletownshend, Co Cork.
2. Construction of a Foul Sewage Pumping Station, Outfall and Associated Site works in Castletownshend, Co Cork.

The waste water treatment plant will be constructed in the Northeast corner of Castletownshend townland, with the treated effluent being discharged via a sea outfall to the adjacent Castlehaven inlet.

The waste water treatment plant will provide treatment for a population equivalent (PE) of 1000 and will be procured as a Design, Build, and Operate contract. An indicative layout of the WWTP is shown on Drawing No. C006104-P-003. The final layout will be determined by the design-build-operate contractor's design. The plant design, however, will include for an inlet lift station, coarse screening, grit removal, secondary treatment (extended aeration) and final clarification. Treatment facilities for sludge produced on site will also be provided. .

The pumping station will be constructed at the Quay, Castletownshend. The location and details of the pumping station are shown on Drawing No. C006104-P-006. The proposed pumping station will be completely underground. Access to the pumping station will be via manhole covers which will be level with the surface of the road.

## 2.0 Implications with respect to Planning and Development of the area.

The proposal is in accordance with the proper planning and development of the area.

## 3.0 Submissions Received

Twelve submissions were received. Ten submissions were received by the deadline of 11<sup>th</sup> April 2008 and two submissions were received after the deadline of 11<sup>th</sup> April 2008.

	Name	Address	Date of Submission
1	South Western Regional Fisheries Board.	Sunnyside House, Macroom Co. Cork	7 <sup>th</sup> March 2008
2	Development Applications Unit, Department of Environment Heritage and Local Government.	Dun Sceine Harcourt Lane Dublin 2.	11 <sup>th</sup> March 2008
3	Munitir na Tire.	Castlehaven Community Council, County Cork.	20 <sup>th</sup> February 2008
4	Munitir na Tire.	Castlehaven Community Council, County Cork.	29 <sup>th</sup> February 2008
5	Jack Coffey.	The Boat House, The Mall, Castletownshend, Co Cork.	14 <sup>th</sup> February 2008
6	Grace O'Malley.	Culnasionnach, Farrandau, Castletownshend, Co. Cork.	13 <sup>th</sup> February 2008
7	Senator Denis O'Donovan.	Fianna Fail Constituency	29 <sup>th</sup> February 2008

		Office, Bantry, Co Cork.	
8	Noel and Nora O' Driscoll.	8 Gleann Ard, Castletownshend, Co Cork.	8 <sup>th</sup> April 2008
9	John Collins.	Castletownshend, Skibbereen, Co Cork.	10 <sup>th</sup> April 2008
10	Ms. J Bunting.	Jocelyn's Boathouse, The Western Quay, Castletownshend, Co Cork.	6 <sup>th</sup> April 2008
11	Barry Lordan. (Late Submission)	"Cerrero", Coast Road, Castletownshend, Co Cork.	18 <sup>th</sup> April 2008
12	Colm & Mairead Buckley. (Late Submission)	"The Barbers", Castletownshend, Skiberreen, Co Cork.	28 <sup>th</sup> May 2008

### 3.1 Submission No.1 South Western Regional Fisheries Board.

**Issue** – The Board welcomes all proposals to improve waste water treatment facilities but was concerned that no reference is made to the extent of aquaculture usage in the area. Requested that Cork County Council carry out an assessment in this regard.

**Response** – White Young Green (Consultants to Cork County Council) have assessed this matter and have confirmed that there is no aquaculture in the vicinity of the proposed outfall and that no impact on aquaculture in the area is expected.

### 3.2 Submission No.2 Development Applications Unit (DEHLG):

**Issue** – That a detailed Archaeological Assessment be carried out to their specific requirements in advance of any works taking place.

**Response** – Moore Marine Services Ltd have been commissioned to carry out the Archaeological Assessment. The report is complete and has been submitted to the Development Applications Unit of the DEHLG.

### 3.3 Submission No.3 Muintir na Tíre (20<sup>th</sup> February 2008)

**Issue** – Sewerage collection network should be extended to include the whole village within the development boundary.

**Response** – The extent of the sewerage collection network is not included in the Part 8 Planning application. However, Cork County Council intends to extend the network where feasible to cater for the village within the development boundary. This is subject to affordability constraints and approval from the DEHLG.

**Issue** – Odours from the WWTP.

**Response** – The WWTP is to be designed, constructed and operated in accordance with national & EU standards governing odour and noise levels emanating from WWTP's. The WWTP will comply with the requirements of S.I. No. 787 of 2005 - EUROPEAN COMMUNITIES (WASTE WATER TREATMENT) (PREVENTION OF ODOURS AND NOISE) REGULATIONS 2005.

**Issue** – Concerned that concentrating outfall in one area could potentially cause a bigger problem in the future.

**Response** – Discharge from the outfall will be of treated effluent, with at least 90/95% of pollutants removed. Discharge is also to the edge of the channel and below low water level, not to the shoreline, as for the majority of the existing outfalls. Discharge to the channel will result in acceptable dilutions of the TREATED effluent.

**Issue** – Visual intrusion of the WWTP.

**Response** – screen planting will be placed at the WWTP boundaries to reduce the visual impact of the proposed WWTP.

**Issue** – John Fleming Construction’s involvement in the project.

**Response** – The partnership between Cork County Council and John Fleming Construction is not the subject of this Part 8 Planning Application.

The scheme will be managed by Cork County Council and Fleming Construction in line with DEHLG Circular L1/07 (Serviced Land Initiative schemes).

**Issue** – Relocation of the proposed WWTP.

**Response** – The current proposed location for the WWTP is within the EPA guidelines regarding distances to existing dwellings. This site was identified by White Young Green Consulting Engineers as the most suitable site for the location of the WWTP.

#### 3.4 Submission No.4 Muintir na Tire (29<sup>th</sup> February 2008)

**Issue** – Sewerage collection network should be extended to include the whole village within the development boundary.

**Response** – The extent of the sewerage collection network is not included in the Part 8 Planning application. However, Cork County Council intends to extend the network where feasible to cater for the village within the development boundary. This is subject to affordability constraints and approval from the DEHLG.

**Issue** – Relocation of the proposed WWTP.

**Response** – The current proposed location for the WWTP is within the EPA guidelines regarding distances to existing dwellings. This site was identified by White Young Green Consulting Engineers as the most suitable site for the location of the WWTP.

**Issue** – *Odours from the WWTP.*

**Response** – *The WWTP is to be designed, constructed and operated in accordance with national & EU standards governing odour and noise levels emanating from WWTP's. The WWTP will comply with the requirements of S.I. No. 787 of 2005 - EUROPEAN COMMUNITIES (WASTE WATER TREATMENT) (PREVENTION OF ODOURS AND NOISE) REGULATIONS 2005.*

### 3.5 Submission No.5 Mr. Jack Coffey

**Issue** – *Sewerage collection network should be extended to include the wider community in the village.*

**Response** – *The extent of the sewerage collection network is not included in the Part 8 Planning application. However, Cork County Council intends to extend the network where feasible to cater for the village within the development boundary. This is subject to affordability constraints and approval from the DEHLG.*

### 3.6 Submission No.6 Ms. Grace O'Malley

**Issue** – *Sewerage collection network should be extended to include the wider community in the village.*

**Response** – *The extent of the sewerage collection network is not included in the Part 8 Planning application. However, Cork County Council intends to extend the network where feasible to cater for the village within the development boundary. This is subject to affordability constraints and approval from the DEHLG.*

### 3.7 Submission No.7 Senator Denis O'Donovan

**Issue** – That the concerns of the community council are considered.

**Response** – The Community Council have made two submissions on the Part 8 Planning Application. Cork County Council have responded to their issues in this report. Cork County Council Engineers have also met the community Council to discuss their concerns.

### 3.8 Submission No.8 Mr. & Mrs. Noel and Nora O'Driscoll

**Issue** – Odours from the WWTP.

**Response** – The WWTP is to be designed, constructed and operated in accordance with national & EU standards governing odour and noise levels emanating from WWTP's. The WWTP will comply with the requirements of S.I. No. 787 of 2005 - EUROPEAN COMMUNITIES (WASTE WATER TREATMENT) (PREVENTION OF ODOURS AND NOISE) REGULATIONS 2005.

**Issue** – Noise levels from the WWTP.

**Response** The WWTP is to be designed, constructed and operated in accordance with national & EU standards governing odour and noise levels emanating from WWTP's. The WWTP will comply with the requirements of S.I. No. 787 of 2005 - EUROPEAN COMMUNITIES (WASTE WATER TREATMENT) (PREVENTION OF ODOURS AND NOISE) REGULATIONS 2005.

**Issue** – Visual intrusion of the WWTP.

**Response** – screen planting will be placed at the WWTP boundaries to reduce the visual impact of the proposed WWTP.



**Issue** – Adequate boundary protection at the WWTP to protect against access from children.

**Response** – The boundaries of the WWTP will be 2.4m high security gates and fences to prevent access from people and livestock.

### 3.9 Submission No.9 Mr. John Collins

**Issue** – That Mr. Collins’s house is not being included in the scheme.

**Response** – The extent of the sewerage collection network is not included in the Part 8 Planning application. However, Cork County Council intends to extend the network where feasible to cater for the village within the development boundary. This is subject to affordability constraints and approval from the DEHLG. If this extension of the scheme is approved Mr. Collins’s house would be included.

**Issue** – That adequate notice was not given to the residents of Castletownsend of the proposed scheme.

**Response** – The Part 8 Planning Application placed on public display by Cork County Council is adequate notification of the proposed scheme. The Part 8 Planning procedure allows for submissions or observations to be made regarding the scheme. Prior to the publication of the Part 8 Planning Application representatives from Cork County Council met the Castlehaven Community Council to inform them of the proposals for the Sewerage Scheme.

**Issue** – That the pumping station at the pier should be located over the wall in lands owned by a third Party.

**Response** – The location proposed by Mr. Collins for the pump station is on private property at a site to which access would be more difficult than the current proposed location, both for construction, operation and maintenance. It should be noted that the proposed pump station will be underground as shown in attached drawings.

**Issue** – Sewerage collection network should be extended to include the whole village.

**Response** –The extent of the sewerage collection network is not included in the Part 8 Planning application. However, Cork County Council intends to extend the network where feasible to cater for the village within the development boundary. This is subject to affordability constraints and approval from the DEHLG.

**Issue** – That the scheme be done in the “Right Way”.

**Response** – Every effort will be made by Cork County Council to ensure that the scheme is procured, managed and constructed in the correct manner.

### 3.10 Submission No.10 Ms. J Bunting

**Issue** – Sewerage collection network should be extended to include the wider community in the village.

**Response** –The extent of the sewerage collection network is not included in the Part 8 Planning application. However, Cork County Council intends to extend the network where feasible to cater for the village within the development boundary. This is subject to affordability constraints and approval from the DEHLG.

### 3.11 Submission No.11 Mr. Barry Lordan

**Issue** – Sewerage collection network should be extended to out the Coast Road as far as the Ball Alley.

**Response** –The extent of the sewerage collection network is not included in the Part 8 Planning application. However, Cork County Council intends to extend the network where feasible to cater for the village within the development boundary. This is subject to affordability constraints and approval from the DEHLG.

### 3.12 Submission No.12 Mr. & Mrs. Colm & Mairead Buckley

**Issue** – Sewerage collection network should be extended to include the the areas in the village not already served.

**Response** –The extent of the sewerage collection network is not included in the Part 8 Planning application. However, Cork County Council intends to extend the network where feasible to cater for the village within the development boundary. This is subject to affordability constraints and approval from the DEHLG.

For inspection purposes only.  
Consent of copyright owner required for any other use.

## 4.0 Modifications

The following modifications to the proposals the **subject of this Part 8 Planning Application** are recommended.

- Additional screen planting will be placed at the WWTP boundaries to reduce the visual impact of the proposed WWTP.

## 5.0 Recommendation

I recommend that the construction of a new Wastewater Treatment Plant, Access Road, Administration Building, Outfall, Foul Sewage Pumping Station and Associated Site works in Castletownshend, Co Cork proceed as detailed in this report.



A handwritten signature in blue ink, consisting of several loops and a long horizontal stroke, positioned above a solid horizontal line.

For inspection purposes only.  
Consent of copyright owner required for any other use.

Assistant County Manager,  
Cork County Council.

**CORK COUNTY COUNCIL / JOHN FLEMING CONSTRUCTION Ltd.**  
**CASTLETOWNSHEND WASTEWATER TREATMENT PLANT**  
**PART 8 PLANNING**

DRAWING LIST:

C006104-P-000	COVER SHEET.
C006104-P-001	LOCATION MAP.
C006104-P-002	CASTLETOWNSHEND WWTP SITE LOCATION MAP
C006104-P-003	PROPOSED WWTP SITE LAYOUT.
C006104-P-004	CROSS-SECTION A-A & B-B.
C006104-P-005	TYPICAL DETAILS.
C006104-P-006	PROPOSED PUMPSTATION DETAILS.

*For inspection purposes only.  
Consent of copyright owner required for any other use.*



White Young Green  
Consulting

White  
Young  
Green

www.wyg.com

thinking beyond construction



LOCATION PLAN - 1:50,000

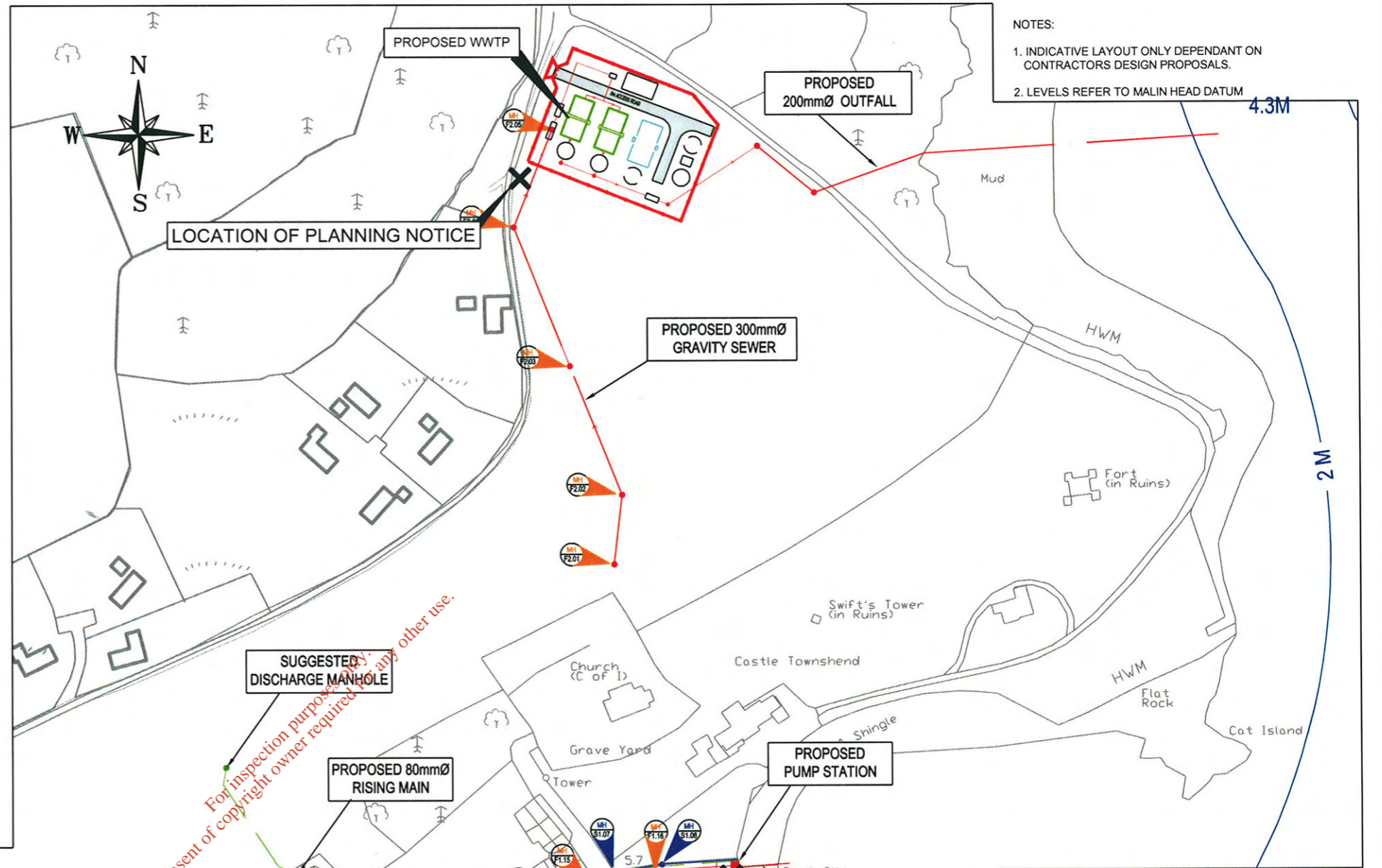
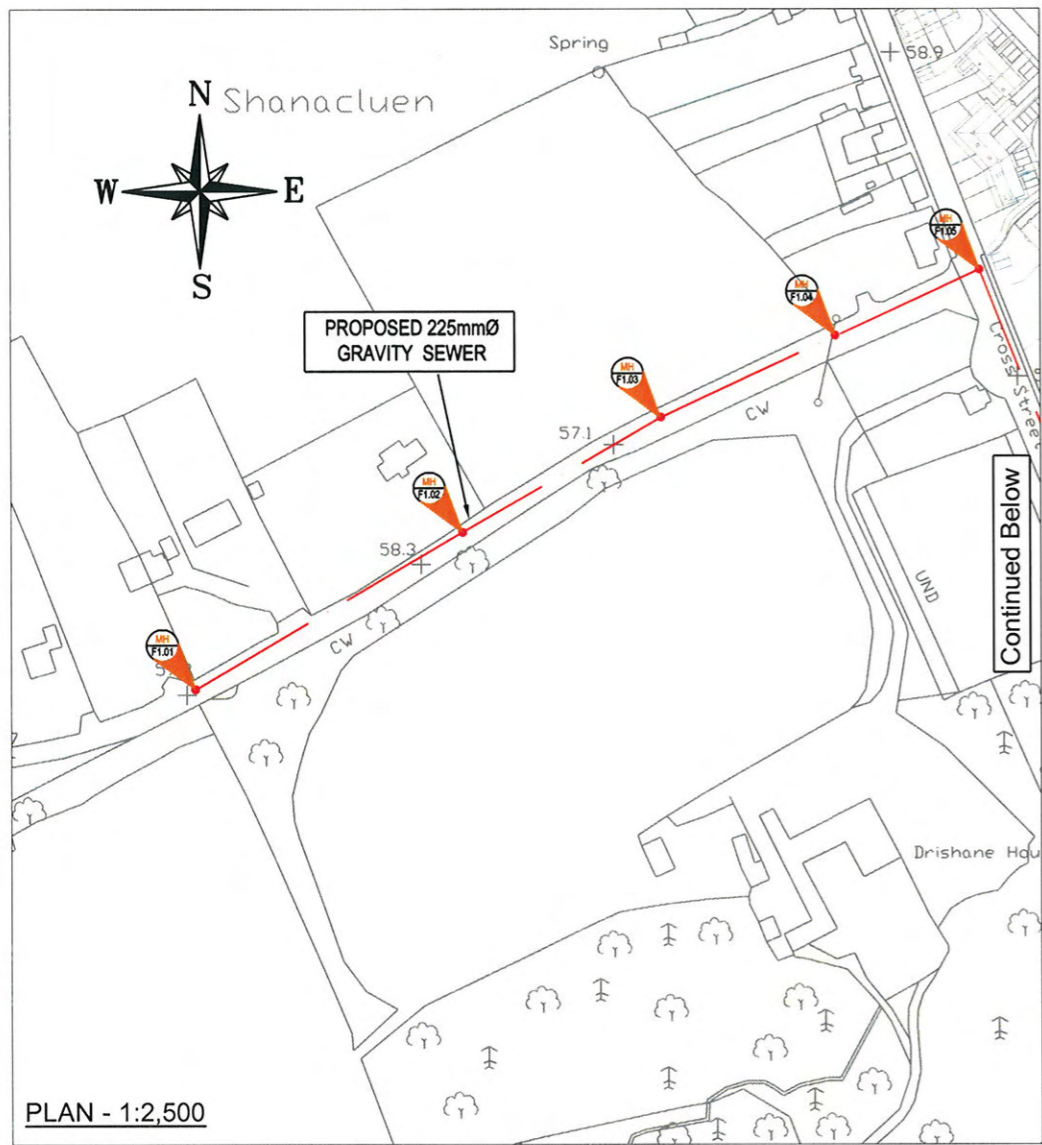
P1	ISSUED FOR PART 8 PLANNING	BY	CHK	APP	DATE
REV	DESCRIPTION				

CLIENT  
 CORK COUNTY COUNCIL /  
 JOHN FLEMING CONSTRUCTION LTD.

ENGINEERING UNIT 2  
 MANAGEMENT UNIVERSITY TECHNOLOGY CENTRE  
 ENVIRONMENTAL CURAHEEN ROAD  
 PLANNING BISHOPTOWN  
 CORK  
 TEL: +353 (0)21 4933200  
 www.wyg.com e-mail: cork@wyg.com  
 Ireland

PROJECT:  
 CASTLETOWNSHEND SEWERAGE SCHEME  
 DRAWING TITLE:  
 SITE LOCATION MAP

SCALE A3	DRAWN	DATE	CHECKED	DATE	APPROVED	DATE
1:50,000	POM	20.11.07	BH		KT	
PROJECT No.	OFFICE	TYPE	DRAWING No.	REVISION		
C006104	12	C	C006104-P-001	P1		



- NOTES:
1. INDICATIVE LAYOUT ONLY DEPENDANT ON CONTRACTORS DESIGN PROPOSALS.
  2. LEVELS REFER TO MALIN HEAD DATUM



For inspection purposes only.  
Consent of copyright owner required for any other use.

P2	ISSUED FOR PART 8 PLANNING	60/BA/1	04.02.08
P1	ISSUED FOR PART 8 PLANNING	POM BH KT	05.12.07
REV	DESCRIPTION	BY	CHK APP DATE

CLIENT  
CORK COUNTY COUNCIL /  
JOHN FLEMING CONSTRUCTION LTD.

ENGINEERING MANAGEMENT ENVIRONMENTAL PLANNING

UNIT 2 UNIVERSITY TECHNOLOGY CENTRE CURAHEEN ROAD BISHOPTOWN CORK

White Young Green

TEL: +353 (0)21 4933200  
e-mail: cork@wyg.com

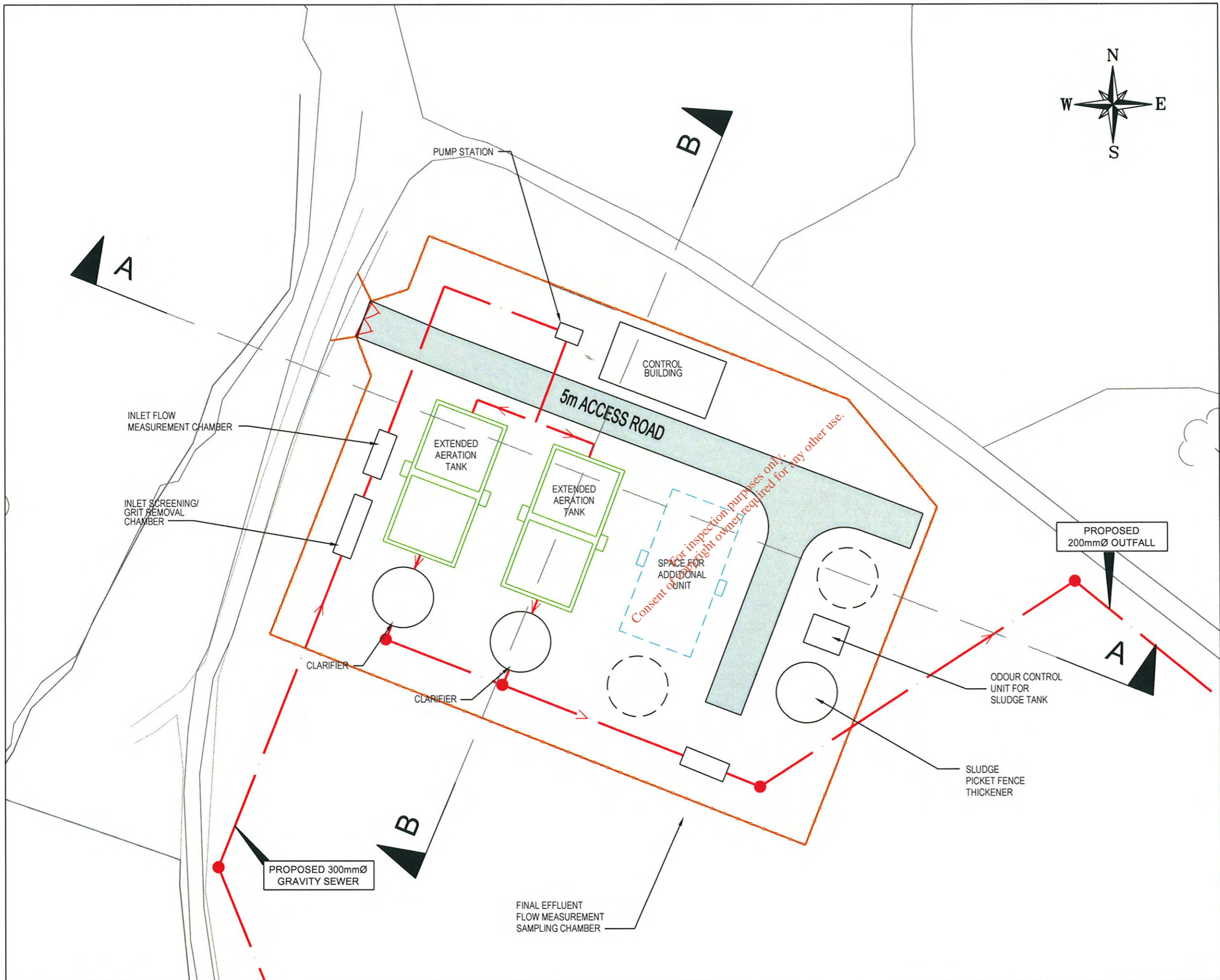
www.wyg.com

Ireland

PROJECT:  
CASTLETOWNSHEND SEWERAGE SCHEME

DRAWING TITLE:  
CASTLETOWNSHEND WWTP SITE LOCATION MAP

SCALE A3	DRAWN	DATE	CHECKED	DATE	APPROVED	DATE
1:2,500	POM	20.11.07	BH		KT	
PROJECT No.	OFFICE	TYPE	DRAWING No.	REVISION		
C006104	12	C	C006104-P-002	P2		



- NOTES:
1. INDICATIVE LAYOUT ONLY DEPENDANT ON CONTRACTORS DESIGN PROPOSALS.
  2. LEVELS REFER TO MALIN HEAD DATUM
  3. FOR SECTIONS SEE DWG C006104-P-004

P2	ISSUED FOR PART 8 PLANNING	GW	BH	KT	04.02.08
P1	ISSUED FOR PART 8 PLANNING	POM	BH	KT	05.12.07
REV	DESCRIPTION	BY	CHK	APP	DATE

CLIENT  
 CORK COUNTY COUNCIL  
 JOHN FLEMING CONSTRUCTION LTD.

ENGINEERING MANAGEMENT ENVIRONMENTAL PLANNING	UNIT 2 UNIVERSITY TECHNOLOGY CENTRE CURAHEEN ROAD BISHOPTOWN CORK	 <b>White Young Green</b> Ireland
www.wyg.com	TEL: +353 (0)21 4933200 e-mail: cork@wyg.com	

PROJECT:  
 CASTLETOWNSHEND SEWERAGE SCHEME

DRAWING TITLE:  
 CASTLETOWNSHEND WWTP  
 PROPOSED SITE LAYOUT

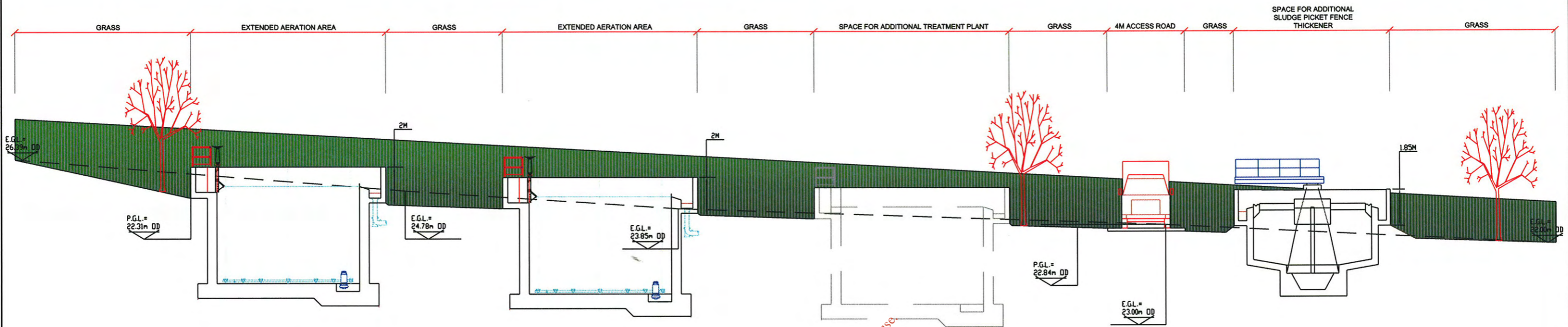
SCALE A3 1:500	DRAWN POM	DATE 20.11.07	CHECKED BH	DATE	APPROVED KT	DATE
PROJECT No. C006104	OFFICE 12	TYPE C	DRAWING No. C006104-P-003	REVISION P2		

PLAN - 1:500

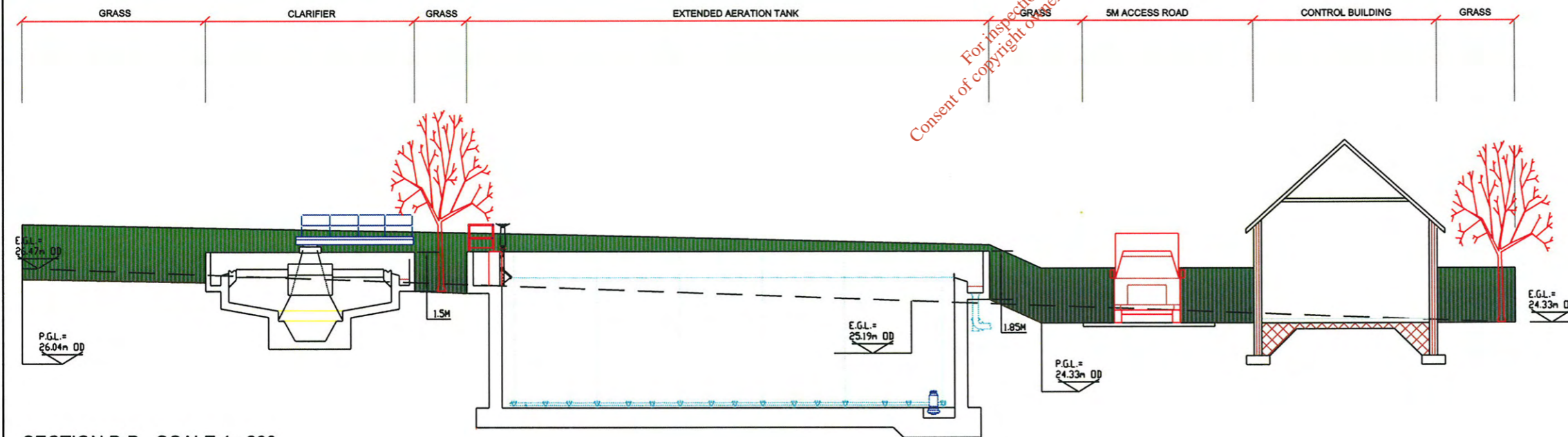
FILENAME: G:\C006104\04P-05\PROJECT DEVELOPMENT\03 CAS\02 DRAWINGS-FIGURES\PART 8 PLANNING\C006104-P-003\_P2.DWG | PLOTTED BY: GEMMA.WHITE | PLOTTED DATE: 04 February 2008 15:44:28



- NOTES:
1. INDICATIVE LAYOUT ONLY DEPENDANT ON CONTRACTORS DESIGN PROPOSALS.
  2. LEVELS REFER TO MALIN HEAD DATUM



SECTION A-A - SCALE 1 : 200



SECTION B-B - SCALE 1 : 200

For inspection purposes only.  
Consent of copyright owner required for any other use.

P2	ISSUED FOR PART 8 PLANNING	ABH	05.12.07
P1	ISSUED FOR PART 8 PLANNING	POM BH KT	05.12.07
REV	DESCRIPTION	BY	CHK APP DATE

CLIENT  
CORK COUNTY COUNCIL  
JOHN FLEMING CONSTRUCTION LTD.

ENGINEERING MANAGEMENT ENVIRONMENTAL PLANNING  
UNIT 2 UNIVERSITY TECHNOLOGY CENTRE CURAHEEN ROAD BISHOPTOWN CORK  
TEL: +353 (0)21 4933200  
e-mail: cork@wyg.com  
www.wyg.com

**White Young Green**  
Ireland

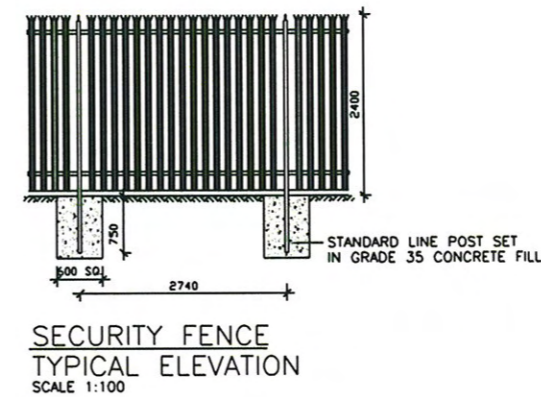
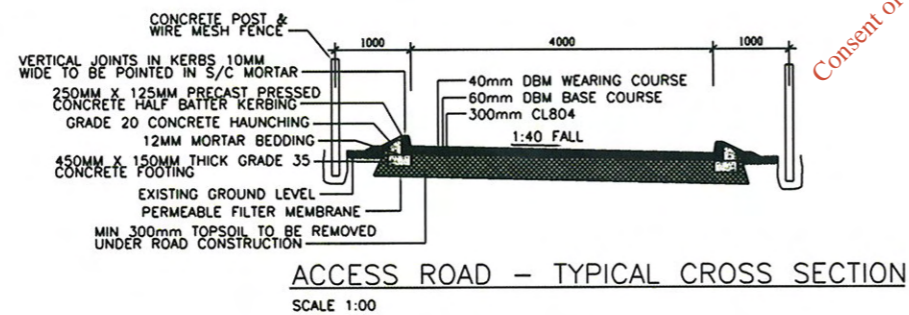
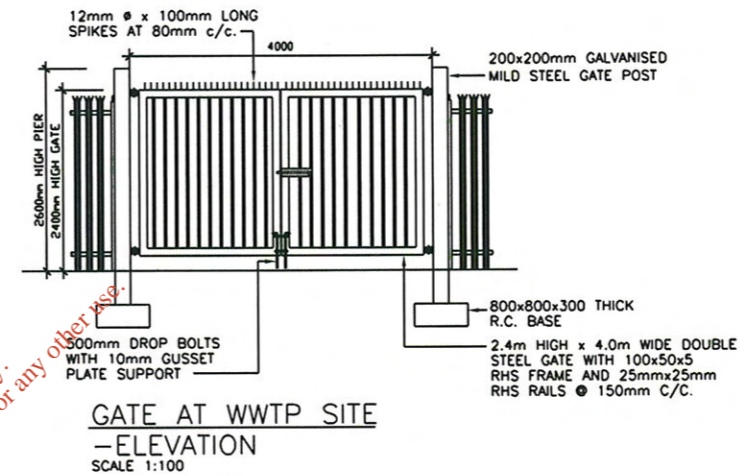
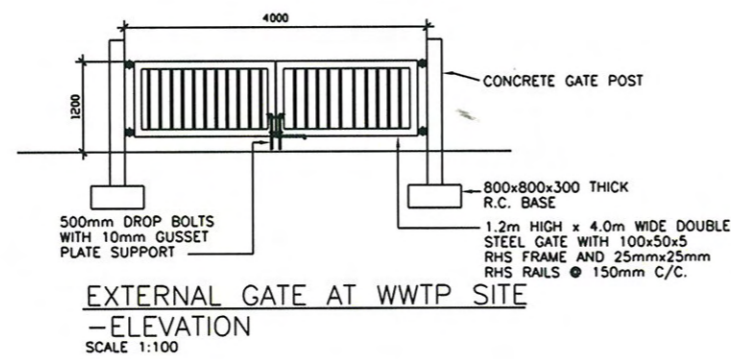
PROJECT:  
CASTLETOWNSHEND SEWERAGE SCHEME

DRAWING TITLE:  
PROPOSED WWTP SITE LAYOUT  
SECTION A-A & B-B

SCALE A3 1:200	DRAWN POM	DATE 20.11.07	CHECKED BH	DATE	APPROVED KT	DATE
PROJECT No. C006104	OFFICE 12	TYPE C	DRAWING No. C006104-P-004	REVISION P2		

NOTES:

1. INDICATIVE LAYOUT ONLY DEPENDANT ON CONTRACTORS DESIGN PROPOSALS.
2. LEVELS REFER TO MALIN HEAD DATUM



For inspection purposes only.  
Consent of copyright owner required for any other use.

REV	DESCRIPTION	BY	CHK	APP	DATE
P2	ISSUED FOR PART 8 PLANNING	GW	BH	KT	04.02.08
P1	ISSUED FOR PART 8 PLANNING	POM	BH	KT	05.12.07

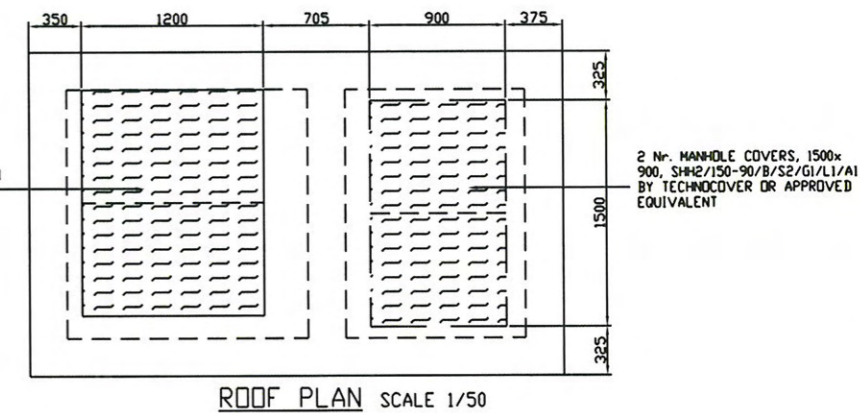
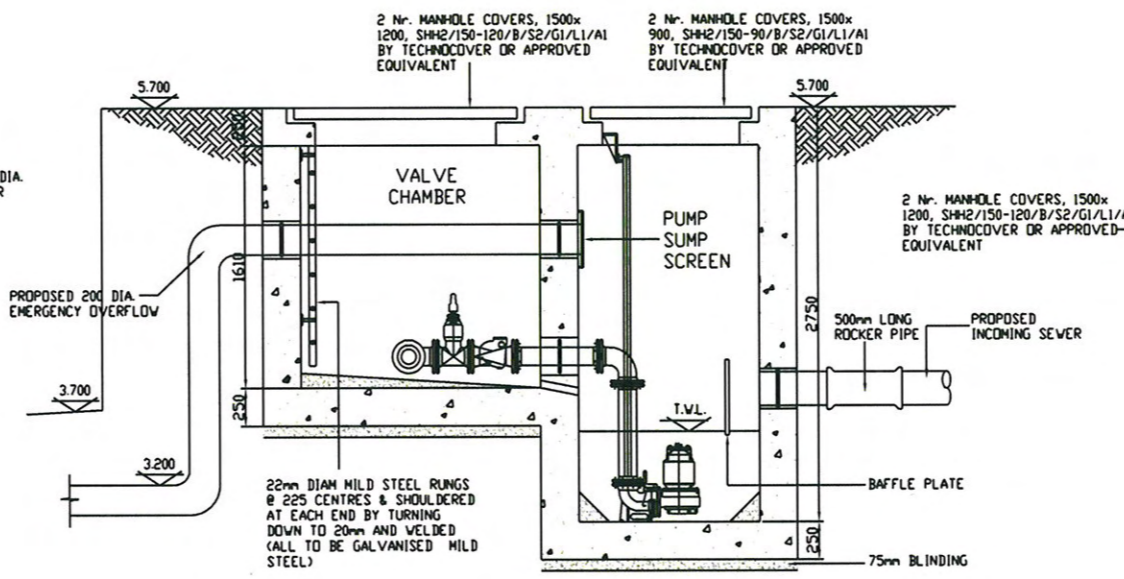
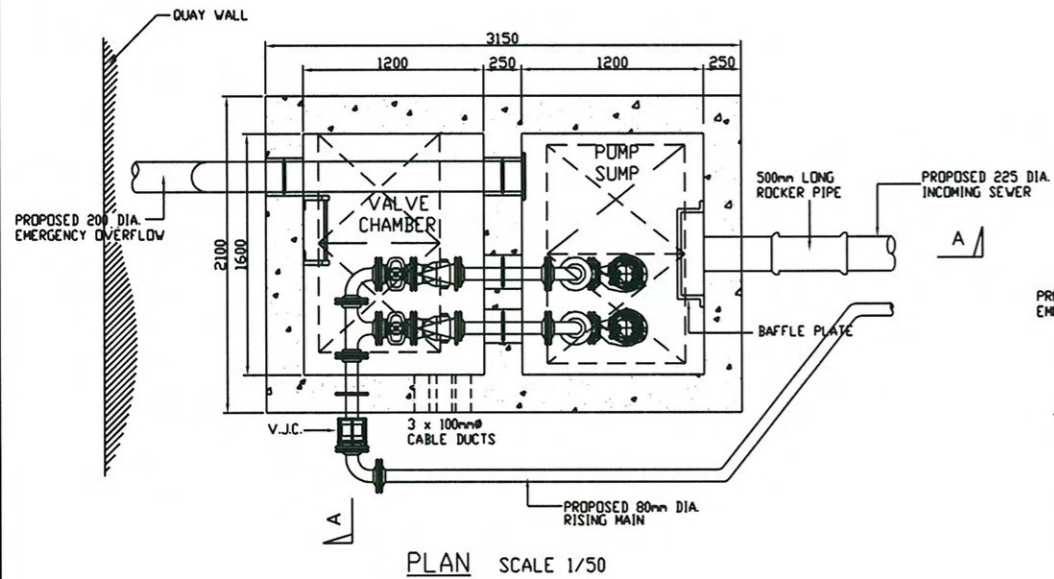
CLIENT  
CORK COUNTY COUNCIL /  
JOHN FLEMING CONSTRUCTION LTD.

ENGINEERING MANAGEMENT ENVIRONMENTAL PLANNING  
UNIT 2 UNIVERSITY TECHNOLOGY CENTRE CURAHEEN ROAD BISHOPTOWN CORK  
TEL: +353 (0)21 4933200  
e-mail: cork@wyg.com  
www.wyg.com  
Ireland

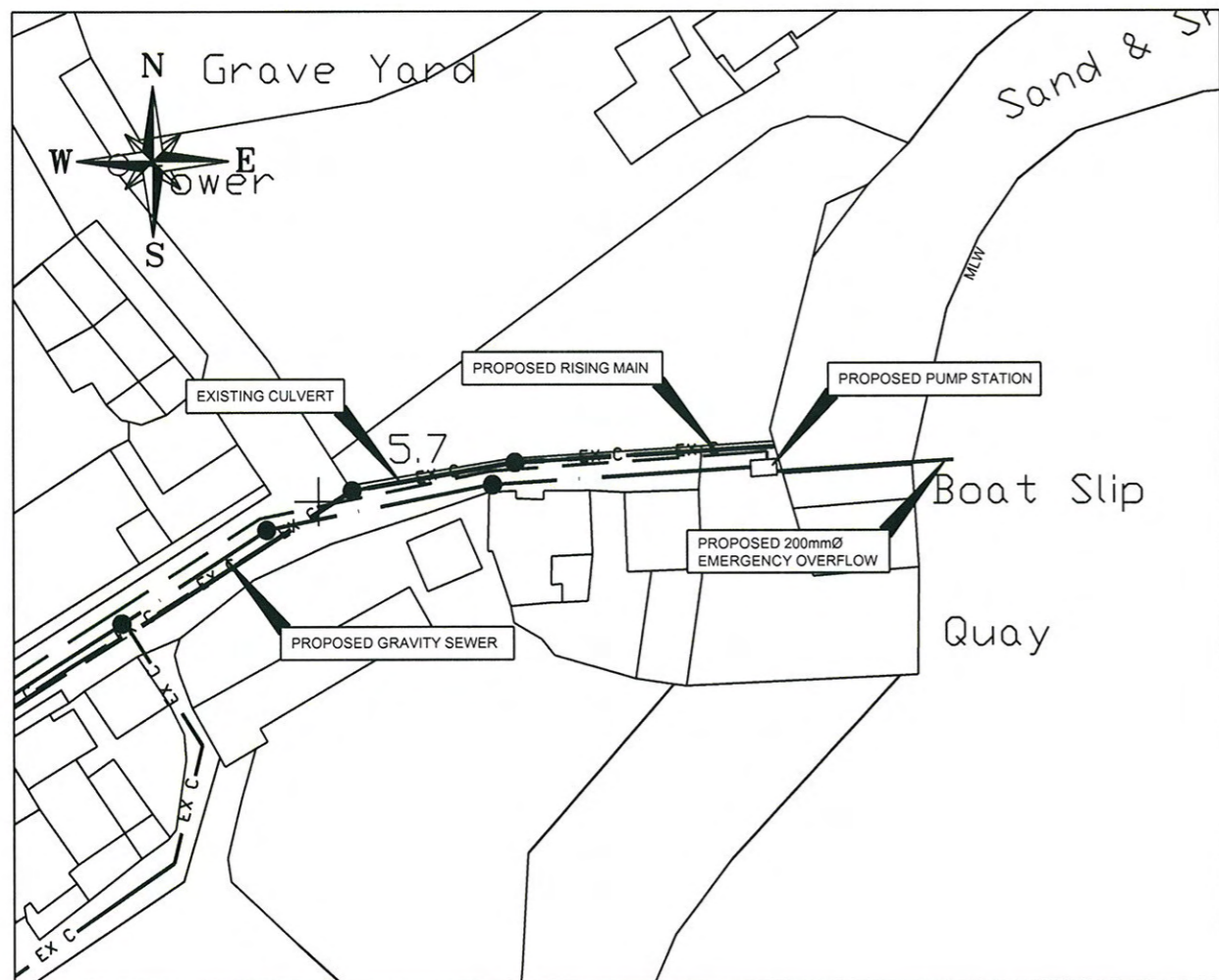
PROJECT:  
CASTLETOWNSHEND SEWERAGE SCHEME

DRAWING TITLE:  
TYPICAL DETAILS

SCALE	A3 1:100	DRAWN	POM	DATE	20.11.07	CHECKED	BH	DATE		APPROVED	KT	DATE	
PROJECT No.	C006104	OFFICE	12	TYPE	C	DRAWING No.	C006104-P-005	REVISION					P2



SECTION A-A SCALE 1/50



KEY PLAN - 1:1,000

For inspection purposes only. Consent of copyright owner required for any other use.

NOTES:

1. INDICATIVE LAYOUT ONLY DEPENDANT ON CONTRACTORS DESIGN PROPOSALS.
2. LEVELS REFER TO MALIN HEAD DATUM

P2	ISSUED FOR PART 8 PLANNING	GW	BH	KT	04.02.08
P1	ISSUED FOR PART 8 PLANNING	POM	BH	KT	05.12.07
REV	DESCRIPTION	BY	CHK	APP	DATE

CLIENT  
CORK COUNTY COUNCIL /  
JOHN FLEMING CONSTRUCITON LTD.

ENGINEERING MANAGEMENT ENVIRONMENTAL PLANNING  
UNIT 2 UNIVERSITY TECHNOLOGY CENTRE CURAHEEN ROAD BISHOPTOWN CORK  
www.wyg.com  
TEL: +353 (0)21 4933200  
e-mail: cork@wyg.com

**White Young Green**  
Ireland

PROJECT:  
CASTLETOWNSHEND SEWERAGE SCHEME  
DRAWING TITLE:  
PROPOSED PUMPSTATION DETAILS

SCALE A3 AS SHOWN	DRAWN POM	DATE 20.11.07	CHECKED BH	DATE	APPROVED KT	DATE
PROJECT No. C006104	OFFICE TYPE 12	C	DRAWING No. C006104-P-006	REVISION P2		

# Cork County Council

## Water Services Investment Programme

### Castletownshend Sewerage Scheme



Planning & Development Act 2000  
Planning & Development Regulations 2001-2006

*For inspection purposes only.  
Consent of copyright owner required for any other use.*

**Managers Report on Part 8 Planning for Castletownshend Sewerage  
Scheme Western Quay Pumping Station in Accordance with the  
Provisions of Part 8 Planning and Development  
Regulations 2001-2006**

Notice in respect of this Part 8 Planning was published in the Southern Star Newspaper dated 23<sup>rd</sup> August 2008 in accordance with article 81 of the Local Government (Planning and Development) regulations, 2001 to 2006. The Closing date for receipt of submissions and observations was the 17<sup>th</sup> October 2008.

## 1.0 Description of the Nature and Extent of the Proposed Scheme

Cork County Council, in partnership with John Fleming Construction Ltd proposes to undertake the following works:

1. The construction of a pumping station, emergency overflow, rising main and associated site works at the Western Quay.

The proposed pumping station is located on the shoreline to the southeast of the village and it will pump sewerage from the localised collection network to the main system for treatment. The pump station will be constructed underground and the maximum height of the associated control kiosk will be 1m above finished ground level.

The full list of drawings relating to this planning proposal is as follows:

C006104- P – 001- Location Map

C006104- P – 007- Site Location Plan

C006104- P – 008- Details of Proposed Pumpstation at Western Quay

## 2.0 Implications with respect to Planning and Development of the area

The proposal is in accordance with the proper planning and development of the area.

### 3.0 Submissions Received

Two submissions were received. The submissions were received by the deadline of 17<sup>th</sup> October 2008.

	Name	Address	Date of Submission
1	South Western Regional Fisheries Board.	Sunnyside House, Macroom, Co. Cork	3 <sup>rd</sup> September 2008
2	Grace O'Malley		5 <sup>th</sup> September 2008

### 3.1 Submission No.1 South Western Regional Fisheries Board

**Issue-** The council should ensure that sewerage contaminated overflows from the proposed pumping stations are avoided.

**Response-** The emergency overflow will only be used where the flows entering the pumping station exceed the upper design limit of the pumps. The size of the pump chamber and pumps will be designed to the relevant standards.

**Issue-** At an absolute minimum the board would request the provision of back up pumps, power supply and alarm systems to kick in, in the event of pump, power or plant, failure or malfunction.

**Response-** The pumping station will be designed to the required standards and specifications as set out in the employer's requirements.

### 3.2 Ms. Grace O'Malley

**Issue-** The sewerage collection system should be extended to include the whole village, particularly the Mall area of the village.

**Response-** The extent of the sewerage collection network is not included in the part 8 Planning application. However, Cork County Council intends to extend the network where feasible to cater for the village within the development boundary. This is subject to affordability constraints and approval from the DEHLG.

## 4.0 Modifications

The following modifications to the proposals the **subject of this Part 8 Planning Application** are recommended.

## 5.0 Recommendations

I recommend the construction of a pumping station, emergency overflow; rising main and associated site works at the Western Quay proceed as detailed in this report.

---

Assistant County Manager,  
Cork County Council.

## Attachment B.8

---

*For inspection purposes only.  
Consent of copyright owner required for any other use.*



## **Attachment B8**

- Copy of Site Notice
- Copy of Press Notice

### **MAP:**

- **CEND B8 – 01** - Locations of Site Notice

*For inspection purposes only.  
Consent of copyright owner required for any other use.*



# CORK COUNTY COUNCIL

## SITE NOTICE

### APPLICATION TO THE ENVIRONMENTAL PROTECTION AGENCY FOR A WASTE WATER DISCHARGE LICENCE

In accordance with the Waste Water Discharge (Authorisation) Regulations 2007, S.I. No. 684 of 2007, Water Services (Western Division), Cork County Council, Courthouse, Skibbereen, Co. Cork is applying to the Environmental Protection Agency for a Waste Water Discharge Licence for the Castletownshend Agglomeration at the following locations:

Discharge Type	Function	Townland	Receptor	Grid Reference
Primary	Major	Castletownshend	Castlehaven Bay	118671E, 031292N
Secondary	Minor	Castletownshend	Castlehaven Bay	118652E, 031130N

Cork County Council proposes to construct a Wastewater Treatment Plant at Castletownshend, Co. Cork, Grid Reference (E118620 N031623). It is proposed to discharge treated wastewater from this Plant to Castlehaven Bay. The proposed location is detailed in the table below:

Discharge Type	Function	Townland	Receptor	Grid Reference
Primary	Major	Castletownshend	Castlehaven Bay	118895E, 031628N

A copy of the application for the Waste Water Discharge Licence and such further information relating to the application as may be furnished to the Agency in the course of the Agency's consideration of the Application shall as soon as is practicable after receipt by the Agency be available for inspection or purchase at the

- Environmental Protection Agency, PO Box 3000, Johnstown Castle Estate, Co. Wexford, Lo Call 1890 335599 Telephone: 053-9160600 Fax: 053-9160699 Email: info@epa.ie and at
- Cork County Council Water Services, Courthouse, Skibbereen, Co. Cork. Telephone: (028)21299 Fax: (028)21995.

Submissions in relation to the application may be made to the Environmental Protection Agency at its headquarters described above.

# CORK COUNTY COUNCIL

## AIRLE CHONTAE CHORCAÍ

### NOTICES

#### NORTHERN DIVISION

##### APPLICATION TO THE ENVIRONMENTAL PROTECTION AGENCY FOR A WASTEWATER DISCHARGE LICENCE

In accordance with the Wastewater Discharge (Authorisation) Regulations 2007, Water Services Northern Division, Cork County Council, Annabella, Mallow is applying to the Environmental Protection Agency for a Wastewater Discharge Licence for the agglomeration at the following locations:

Location	National Grid Ref.	
Beennamweel, Bweeng	E150293 N088061	
Townland	Receptor	Grid Ref.
Beennamweel	Cummen Stream	E150251 N088034

A copy of the application for the Wastewater Discharge Licence and such further information relating to the application as may be furnished to the Agency in the course of the Agency's consideration of the Application shall, as soon as is practicable after receipt by the Agency, be available for inspection or purchase at the:

Environmental Protection Agency, PO Box 3000, Johnstown Castle Estate, Co. Wexford, Lo Call 1890 335 599; Tel: 053-9160699; Email: info@epa.ie

and at  
Cork County Council Offices, Annabella, Mallow, Co. Cork. Tel: 022-21893.

Submissions in relation to the application may be made to the Environmental Protection Agency at its headquarters described above.

Information relating to the application as may be furnished to the Agency in the course of the Agency's consideration of the Application shall, as soon as is practicable after receipt by the Agency, be available for inspection or purchase at the:

Environmental Protection Agency, PO Box 3000, Johnstown Castle Estate, Co. Wexford, Lo Call 1890 335 599; Tel: 053-9160699; Email: info@epa.ie

and at  
Cork County Council Offices, Annabella, Mallow, Co. Cork. Tel: 022-21893.

Submissions in relation to the application may be made to the Environmental Protection Agency at its headquarters described above.

##### APPLICATION TO THE ENVIRONMENTAL PROTECTION AGENCY FOR A WASTEWATER DISCHARGE LICENCE

In accordance with the Wastewater Discharge (Authorisation) Regulations 2007, Water Services Northern Division, Cork County Council, Annabella, Mallow is applying to the Environmental Protection Agency for a Wastewater Discharge Licence for the agglomeration at the following locations:

Location	National Grid Ref.	
Inchidaly, Banteer	E139139 N98377	
Townland	Receptor	Grid Ref.
Banteer	River Blackwater	E139107 N98449

A copy of the application for the Wastewater Discharge Licence and such further information relating to the application as may be furnished to the Agency in the course of the Agency's consideration of the Application shall, as soon as is practicable after receipt by the Agency, be available for inspection or purchase at the:

Environmental Protection Agency, PO Box 3000, Johnstown Castle Estate, Co. Wexford, Lo Call 1890 335 599; Tel: 053-9160699; Email: info@epa.ie

and at  
Cork County Council Offices, Annabella, Mallow, Co. Cork. Tel: 022-21893.

Submissions in relation to the application may be made to the Environmental Protection Agency at its headquarters described above.

### PUBLIC NOTICES

#### NORTHERN DIVISION

##### APPLICATION TO THE ENVIRONMENTAL PROTECTION AGENCY FOR A WASTEWATER DISCHARGE LICENCE

In accordance with the Wastewater Discharge (Authorisation) Regulations 2007, Water Services Northern Division, Cork County Council, Annabella, Mallow is applying to the Environmental Protection Agency for a Wastewater Discharge Licence for the agglomeration of Conna at the following locations:

Plant Name	Location	National Grid Ref.
Conna WWTP	Conna Village	E192575 N093434

Discharge	Function	Townland	Receptor	Grid Ref.
Primary	Main	Conna	River Bride	E192689 N093500

A copy of the application for the Wastewater Discharge Licence and such further information relating to the application as may be furnished to the Agency in the course of the Agency's consideration of the Application shall, as soon as is practicable after receipt by the Agency, be available for inspection or purchase at the:

Environmental Protection Agency, PO Box 3000, Johnstown Castle Estate, Co. Wexford, Lo Call 1890 335 599; Tel: 053-9160699; Fax: 053-9160699; Email: info@epa.ie

and at  
Cork County Council Offices, Annabella, Mallow, Co. Cork. Tel: 022-21123; Fax: 022-21893.

##### APPLICATION TO THE ENVIRONMENTAL PROTECTION AGENCY FOR A WASTEWATER DISCHARGE LICENCE

In accordance with the Wastewater Discharge (Authorisation) Regulations 2007, Water Services Western Division, Cork County Council, Courthouse, Skibbereen is applying to the Environmental Protection Agency for a Wastewater Discharge Licence for the Timoleague agglomeration at the following locations:

Discharge	Function	Townland	Receptor	Grid Ref.
Primary	Main	Timoleague	Courtmacsherry Estuary	E147200 N043523
Secondary	Minor	Timoleague	Courtmacsherry Estuary	E147132 N043496
Secondary	Minor	Timoleague	Courtmacsherry Estuary	E147141 N043507
Secondary	Minor	Timoleague	Courtmacsherry Estuary	E147209 N043702
Secondary	Minor	Timoleague	Courtmacsherry Estuary	E147176 N043789

Cork County Council proposes to construct a new wastewater treatment plant at Cullenagh, Courtmacsherry, Co. Cork, Grid Reference (E149710, N042520). It is proposed to discharge treated wastewater from this plant to Courtmacsherry Estuary. The proposed discharge location is detailed in the table below:

Discharge	Function	Townland	Receptor	Grid Ref.
Primary	Main	Cullenagh	Courtmacsherry Estuary	E150732 N042818

A copy of the application for the Wastewater Discharge Licence and such further information relating to the application as may be furnished to the Agency in the course of the Agency's consideration of the Application shall, as soon as is practicable after receipt by the Agency, be available for inspection or purchase at the:

Environmental Protection Agency, PO Box 3000, Johnstown Castle Estate, Co. Wexford, Lo Call 1890 335 599; Tel: 053-9160699; Fax: 053-9160699; Email: info@epa.ie

and at  
Cork County Council Water Services (Western Division), Courthouse, Skibbereen, Co. Cork. Tel: 028-21299; Fax: 028-21995.

Submissions in relation to the application may be made to the Environmental Protection Agency at its headquarters described above.

### PUBLIC NOTICES

#### WESTERN DIVISION

##### APPLICATION TO THE ENVIRONMENTAL PROTECTION AGENCY FOR A WASTEWATER DISCHARGE LICENCE

In accordance with the Wastewater Discharge (Authorisation) Regulations 2007, Water Services Western Division, Cork County Council, Courthouse, Skibbereen is applying to the Environmental Protection Agency for a Wastewater Discharge Licence for the Glengarriff agglomeration at the following locations:

Plant Name	Location	National Grid Ref.
Glengarriff WWTP	Glengarriff	E093292 N056304

Discharge	Function	Townland	Receptor	Grid Ref.
Primary	Major	Monteensudder	Glengarriff Harbour	E093358 N056263

A copy of the application for the Wastewater Discharge Licence and such further information relating to the application as may be furnished to the Agency in the course of the Agency's consideration of the Application shall, as soon as is practicable after receipt by the Agency, be available for inspection or purchase at the:

Environmental Protection Agency, PO Box 3000, Johnstown Castle Estate, Co. Wexford, Lo Call 1890 335 599; Tel: 053-9160699; Fax: 053-9160699; Email: info@epa.ie

and at  
Cork County Council Water Services (Western Division), Courthouse, Skibbereen, Co. Cork. Tel: 028-21299; Fax: 028-21995.

Submissions in relation to the application may be made to the Environmental Protection Agency at its headquarters described above.

##### APPLICATION TO THE ENVIRONMENTAL PROTECTION AGENCY FOR A WASTEWATER DISCHARGE LICENCE

In accordance with the Wastewater Discharge (Authorisation) Regulations 2007, S.I. No. 684 of 2007, Water Services (Western Division), Cork County Council, Courthouse, Skibbereen, Co. Cork is applying to the Environmental Protection Agency for a Wastewater Discharge Licence for the Castletownshend agglomeration at the following locations:

Discharge	Function	Townland	Receptor	Grid Ref.
Primary	Major	Castletownshend	Castlehaven Bay	E118671 N031292
Secondary	Minor	Castletownshend	Castlehaven Bay	E118652 N031130

Cork County Council proposes to construct a Wastewater Treatment Plant at Castletownshend, Co. Cork, Grid Reference (E118620 N031623). It is proposed to discharge treated wastewater from this Plant to Castlehaven Bay. The proposed location is detailed in the table below:

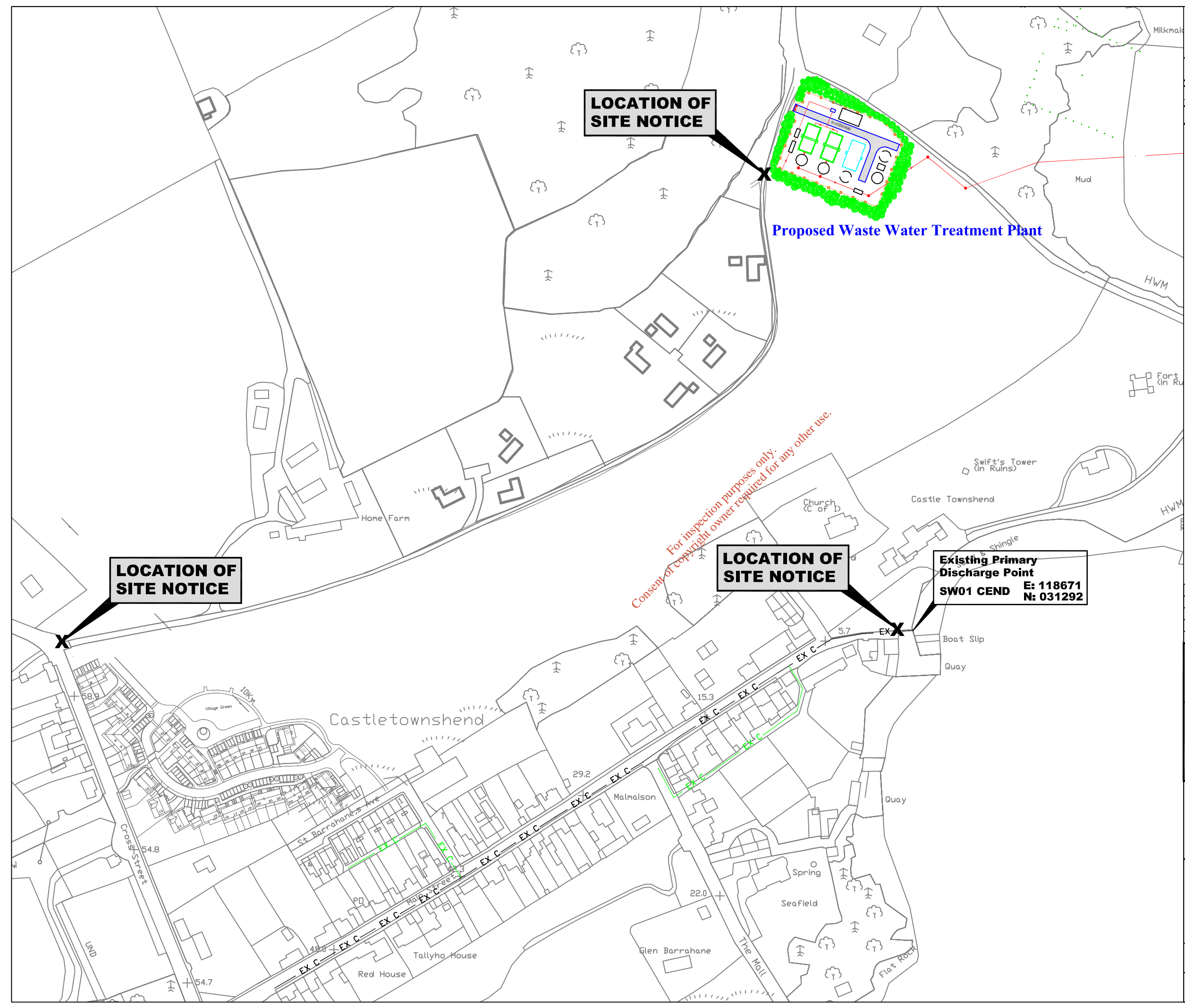
Discharge	Function	Townland	Receptor	Grid Ref.
Primary	Major	Castletownshend	Castlehaven Bay	E118895 N031628

A copy of the application for the Wastewater Discharge Licence and such further information relating to the application as may be furnished to the Agency in the course of the Agency's consideration of the Application shall, as soon as is practicable after receipt by the Agency, be available for inspection or purchase at the:

Environmental Protection Agency, PO Box 3000, Johnstown Castle Estate, Co. Wexford, Lo Call 1890 335 599; Tel: 053-9160699; Fax: 053-9160699; Email: info@epa.ie

and at  
Cork County Council Water Services (Western Division), Courthouse, Skibbereen, Co. Cork. Tel: 028-21299; Fax: 028-21995.

Submissions in relation to the application may be made to the Environmental Protection Agency at its headquarters described above.




**NOTES**

1. Do not scale, use figured dimensions only. If in doubt ask
2. All dimensions to be checked on site
3. Drawings to be read in conjunction with Licence application
4. Includes Ordnance Survey Ireland data reproduced under OSi Licence number Cork County Council CCMA2004/07  
Unauthorised reproduction infringes Ordnance Survey Ireland and Government of Ireland



No.	Date	Drawn	Chkd	Revision	Description

**Cork County Council,  
Western Division.**



N.O'MAHONY, B.E.,  
SENIOR ENGR. (WATER SERVICES),  
COURTHOUSE, SKIBBEREEN.

M. MURRELL,  
DIRECTOR OF SERVICES  
WEST CORK

Job Title:  
**CASTLETOWNSHEND\_WASTE\_WATER  
DISCHARGE\_LICENCE\_APPLICATION**

Drawing Title:  
**ATTACHMENT\_B8  
LOCATIONS\_OF  
SITE\_NOCTICES**

Prepared By: D.O'DONOVAN	Checked By: D.GROARKE	Date: JUNE.2009
Drawing number: CEND_B8-01	Scales: 1/2500	Rev: -

## Attachment B.9

---

*For inspection purposes only.  
Consent of copyright owner required for any other use.*

## Attachment B9

- **Fees** – Copy of Payment

*For inspection purposes only.  
Consent of copyright owner required for any other use.*

# Comhairle Contae Chorcaí Cork County Council

Courthouse,  
Skibbereen, Co. Cork.  
Tel (028) 21299 • Fax (028) 21995  
Web: www.corkcoco.ie  
Teach na Cúirte,  
An Sciobairín, Co. Chorcaí.  
Fón: (028) 21299 • Faics: (028) 21995  
Suíomh Gréasáin: www.corkcoco.ie



Mr. Declan Groarke,  
Senior Executive Engineer,  
Cork County Council,  
Courthouse,  
Skibbereen.

27<sup>th</sup> May 2009

**Re:- Waste Water Discharge Regulations 2007.**

Dear Declan,

With regard to the application to the EPA for Discharge Licences for the agglomerations with P.E.s of 500 to 1,000 listed below, I confirm the following in relation to the application fee of €70,000 (being €10,000 for each agglomeration).

Transferred to EPA Bank Account:- **Account No. 23507098**

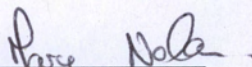
Date Transferred to EPA Bank Account:- **21<sup>st</sup> May, 2009.**

Electronic Fund Transfer Reference No.:- **1080937.**

**Agglomerations: Ballydehob  
Castletownshend  
Drimoleague  
Glengarriff  
Timoleague  
Union Hall  
Ballineen/Enniskeane**

This information should be included with the application to the EPA.

Yours faithfully,

  
Mary Nolan,  
Staff Officer.



Attachment B.12

---

For inspection purposes only.  
Consent of copyright owner required for any other use.



## **Attachment B12**

### **Supporting Information:**

- **Foreshore License Draft Conditions**

*For inspection purposes only.  
Consent of copyright owner required for any other use.*



3<sup>rd</sup> March 2009

Mr Niall Dunne,  
White Young Green,  
Unit 2,  
University Technology Centre,  
Curraheen Road,  
Cork

WHITE YOUNG GREEN (IRL)		PROJECT NO:	0006104
CORK		Our Ref:	MS51/8/1309
NO.		(Please quote on all correspondence)	
05 MAR 2009			
ACT	UT	BSH	
INFC	2		
FILE REF			

**Re: Foreshore Lease/Licence Application – Castletownsend Sewerage Scheme  
for an outfall pipe at Castle Haven Bay, Co. Cork.**

Dear Niall,

I enclose a copy of a letter I sent to you on 6<sup>th</sup> November 2008 along with the specific conditions that will attach to the licence.

I would be grateful if you could respond to this letter as soon as possible as we are anxious to finalise this case.

Can you also confirm if planning permission has been granted for this development and if so please forward a copy of it for our records?

Please forward all correspondence in relation to this application to Sylvester Murphy, by post to Foreshore Section, Coastal Zone Management Division, Department of Agriculture, Fisheries and Food, Johnstown Castle, Co Wexford or by e-mail to [Sylvester.Murphy@Agriculture.gov.ie](mailto:Sylvester.Murphy@Agriculture.gov.ie)

Yours sincerely,

Patricia Buss  
Coastal Zone Management Division

6<sup>th</sup> November 2008

Our Ref: MS51/8/1309  
(Please quote on all correspondence)

Mr Niall Dunne,  
White Young Green,  
Unit 2,  
University Technology Centre,  
Curraheen Road,  
Cork

**Re: Foreshore Lease/Licence Application – Castletownsend Sewerage Scheme  
for an outfall pipe at Castle Haven Bay, Co. Cork.**

Dear Niall,

With reference to the above application I now enclose the Specific Conditions that will attach to the licence.

Please confirm that Cork County Council agree to these conditions.

Please also indicate whether Cork County Council wishes to pay a once off fee of €21,387.59 or an annual fee of €1,475 for this licence.

Yours sincerely,

---

Patricia Buss  
Coastal Zone Management Division

**Specific Conditions – Castletownshend Sewerage Scheme**  
**MS51/8/1309**

1. During excavation for the pipeline, care should be taken to minimise the disturbance to the foreshore. The excavated beach material should be replaced matching, as much as reasonably possible, the surrounding bed profile.
2. No boats should be washed/cleaned in the vicinity of the outfall.
3. The extremity of the outfall should be marked; this may be achieved by the use of a float painted a high visibility yellow.
4. Cork County Council is required to arrange the publication of a local marine notice. This local marine notice should give a general description of operations and approximate dates of commencement and completion. A notice in a locally read newspaper at least two weeks prior to operations will suffice.
5. Archaeological monitoring of the two areas where the outfall pipes are due to be placed be is to be undertaken during the course of the works to the following specifications:

**Archaeological Monitoring:**

- All works for the sewerage scheme in the foreshore and underwater should be subject to archaeological monitoring. This should be undertaken by a suitably qualified archaeologist with marine/underwater experience.
- The archaeological monitoring should be licensed to the Department of Environment, Heritage and Local Government.
- The monitoring licence application should be accompanied by a detailed method statement and this should include details of works planned, including plant/dredger type, duration of and extent of works in the areas. The methodology should also include a finds' retrieval strategy and details of the proposed archaeological monitoring team.
- It should be borne in mind that if significant archaeological remains are found during the archaeological monitoring, the monitoring archaeologist will have the power to have the works stopped. The dredger operator shall be prepared to move away from the area until the potential archaeology has been properly inspected and fully resolved. The developer shall be prepared to be advised by the Underwater Archaeology Unit of the National Monuments Service, Department of Environment, Heritage and Local Government in this regard.

### **Main Sewerage Works -land works:**

- A detailed archaeological assessment is to be undertaken of all the proposed routes for the sewerage scheme in advance of any works commencing if one has not previously been carried out. It is noted that the application for this part of the works may form part of a separate application, and recommendations may have already been issued by the Department of Environment, Heritage and Local Government in this regard. However, if no recommendations have been issued yet, it should be noted by Cork County Council that an assessment in advance of works commencing will be required.
- This should be undertaken by a suitably qualified archaeologist.
- The archaeological assessment should be licensed to the Department of Environment, Heritage and Local Government.
- The licence application should be accompanied by a detailed method statement and this should include details of all the sewerage works planned, including detailed maps of the linear routes of the proposed pipes, details of all plant and areas to be used for plant complexes and work areas.
- It should be borne in mind that if significant archaeological remains are identified during the archaeological assessment, further recommendations may issue from the Department of Environment, Heritage and Local Government, which may include avoidance (re-design of specific pipe routes), preservation by record (archaeological excavation) or archaeological monitoring. Cork County Council should be prepared to be advised by the National Monuments Service of the Department of Environment, Heritage and Local Government in this regard.

For inspection purposes only  
Consent of copyright owner required for any other use

# SECTION C

*For inspection purposes only.  
Consent of copyright owner required for any other use.*

## Attachment C.1

---

For inspection purposes only.  
Consent of copyright owner required for any other use.

## **Attachment C 1**

### **Drawing:**

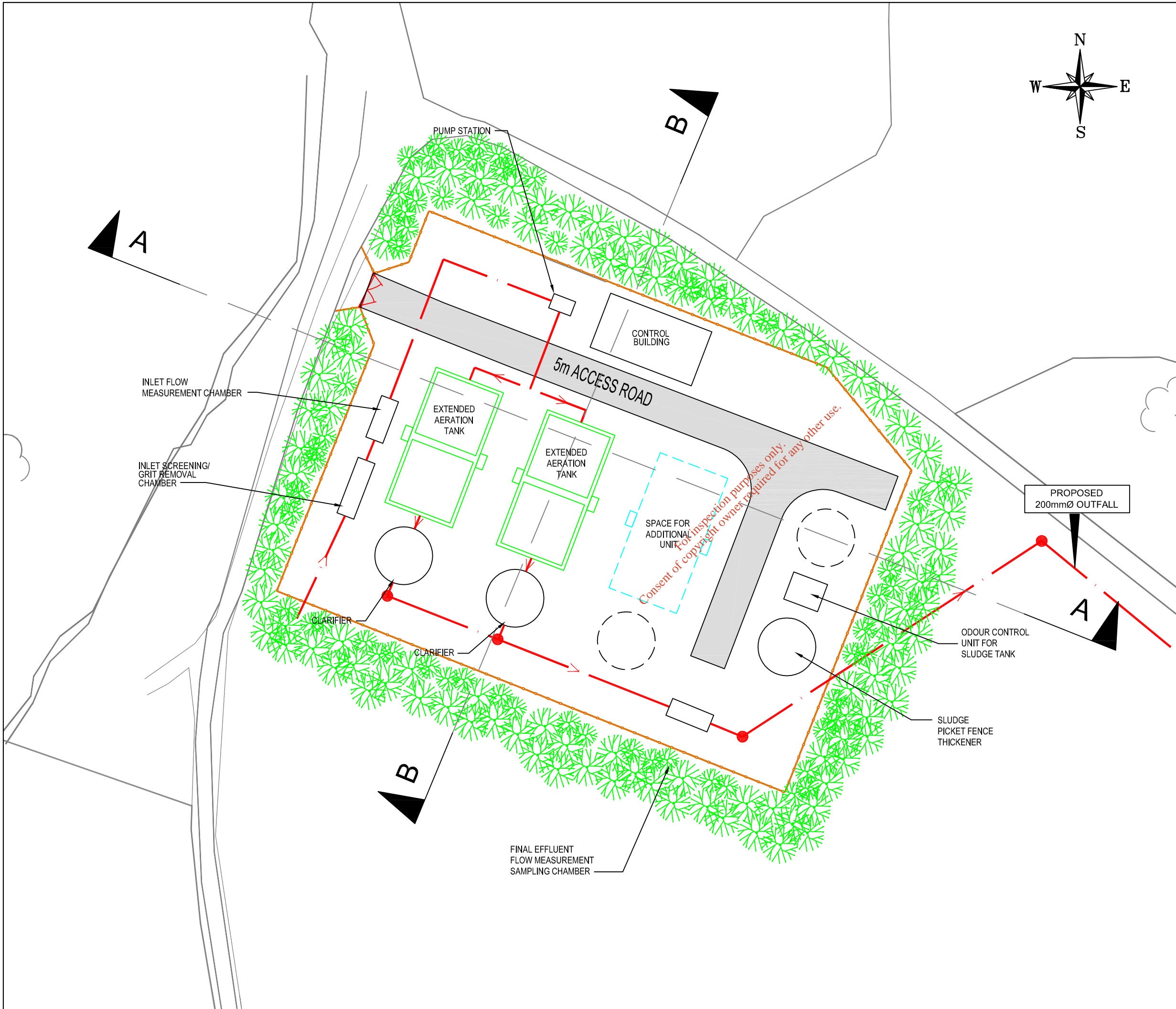
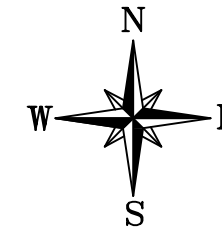
- CEND C1-01 Proposed Wastewater Treatment Plant Process Layout Plan
- CEND C1-02 Proposed Wastewater Treatment Plant Sections
- CEND C1-03 Proposed Main Pump-Station Details
- CEND C1-04 Proposed Western Quay Pump-Station Details
- CEND C1-05 Existing & Proposed Sewerage Network

*For inspection purposes only.  
Consent of copyright owner required for any other use.*



**NOTES**

1. Do not scale, use figured dimensions only. If in doubt ask.
2. All dimensions to be checked on site
3. Drawings to be read in conjunction with Licence application
4. Includes Ordnance Survey Ireland data reproduced under OSI Licence number Cork County Council CCMA2004/07  
Unauthorised reproduction infringes Ordnance Survey Ireland and Government of Ireland



Consent of copyright owner required for any other use.

No.	Date	Drawn	Surv	Chkd	Revision Description

**Cork County Council,  
Western Division.**



N.O'MAHONY, B.E.,  
SENR. ENGR. (WATER SERVICES),  
COURTHOUSE, SKIBBEREEN.  
TEL. 028/21299.  
FAX. 028/21995.

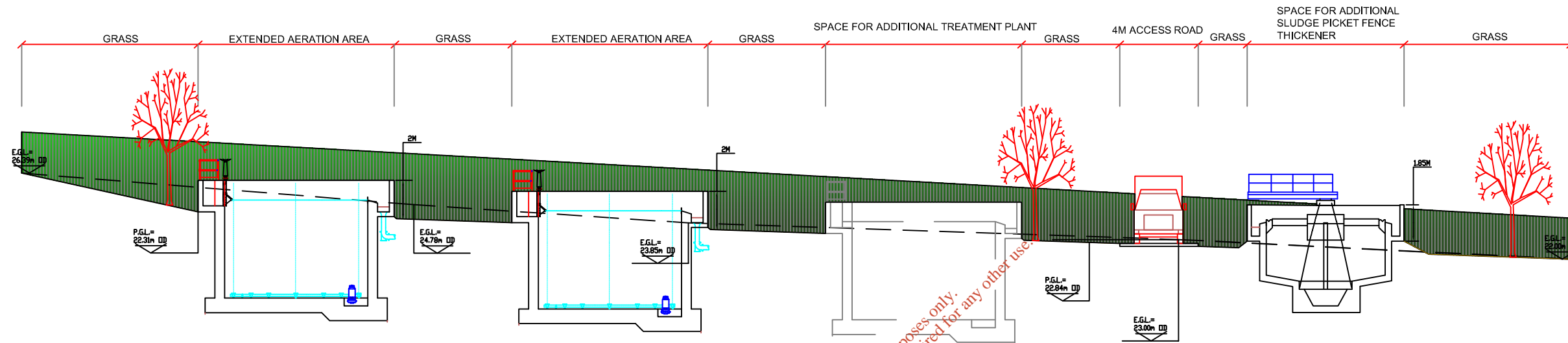
Job Title:  
CASTLETOWNSHEND\_WASTE\_WATER  
DISCHARGE\_LICENCE\_APPLICATION

Drawing Title:  
ATTACHMENT\_C1  
PROPOSED\_WWTP\_PROCESS  
LAYOUT\_PLAN

Prepared By: D.O'DONOVAN	Scales: 1/500	Date: JUNE_2009
Drawing number: CEND_C1_01	Rev:	-

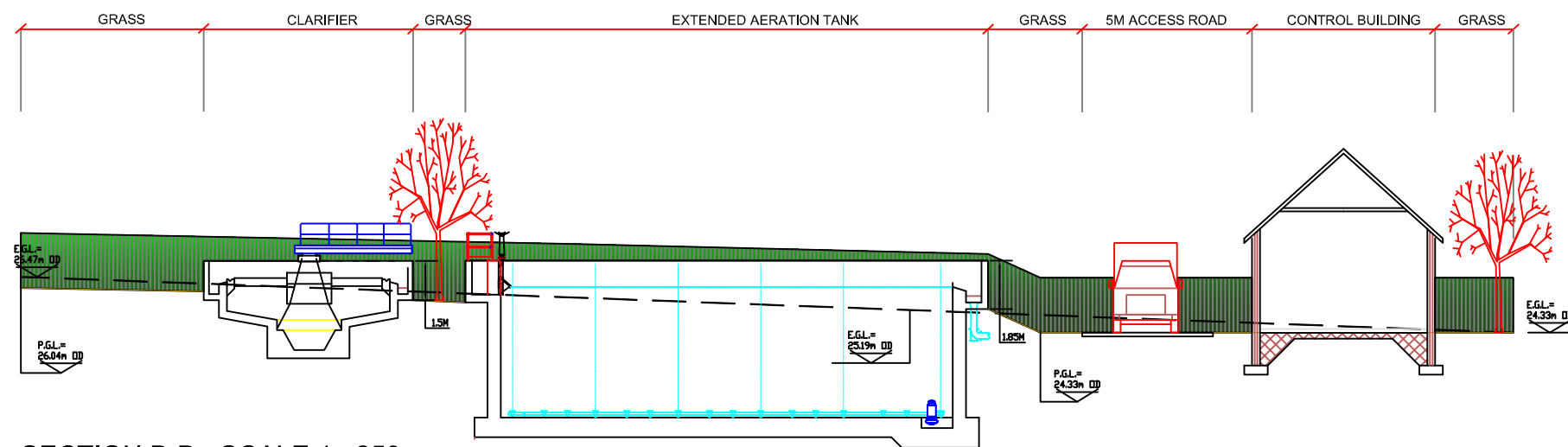
## NOTES

1. Do not scale, use figured dimensions only. If in doubt ask.
2. All dimensions to be checked on site
3. Drawings to be read in conjunction with Licence application
4. Includes Ordnance Survey Ireland data reproduced under OSI Licence number Cork County Council CCMA2004/07  
Unauthorised reproduction infringes Ordnance Survey Ireland and Government of Ireland



SECTION A-A - SCALE 1 : 250

For inspection purposes only.  
Consent of copyright owner required for any other use.



SECTION B-B - SCALE 1 : 250

No.	Date	Drawn	Surv	Chkd	Revision Description

## Cork County Council, Western Division.



N.O'MAHONY, B.E.,  
SENR. ENGR. (WATER SERVICES),  
COURTHOUSE, SKIBBEREEN.  
TEL. 028/21299.  
FAX. 028/21995.

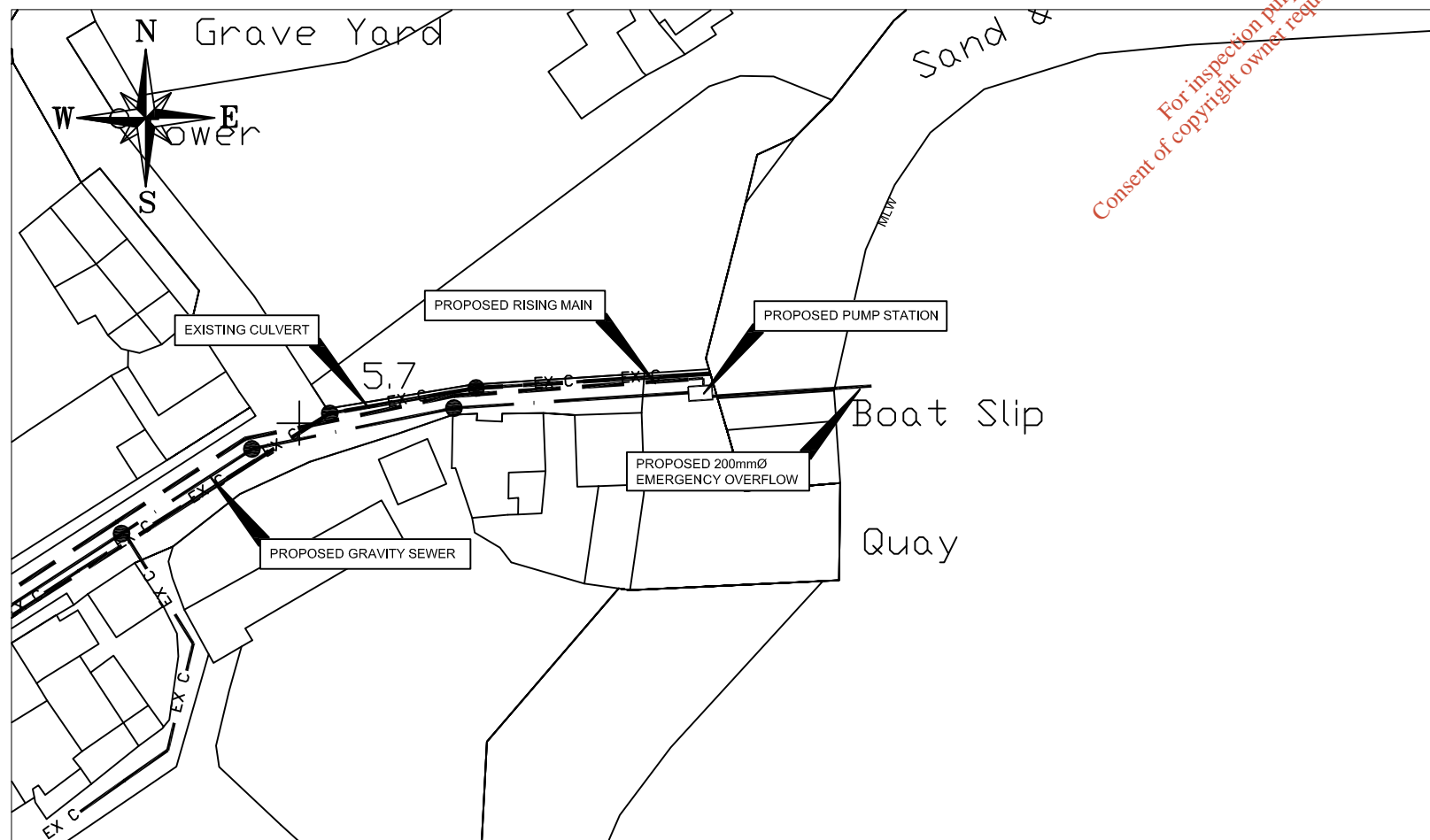
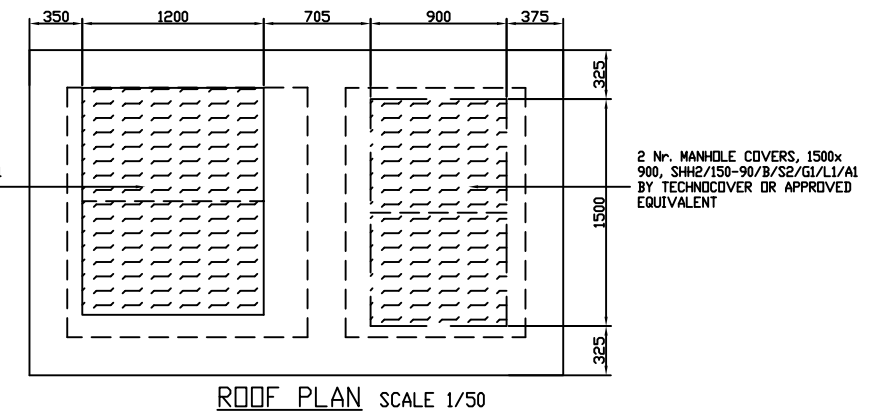
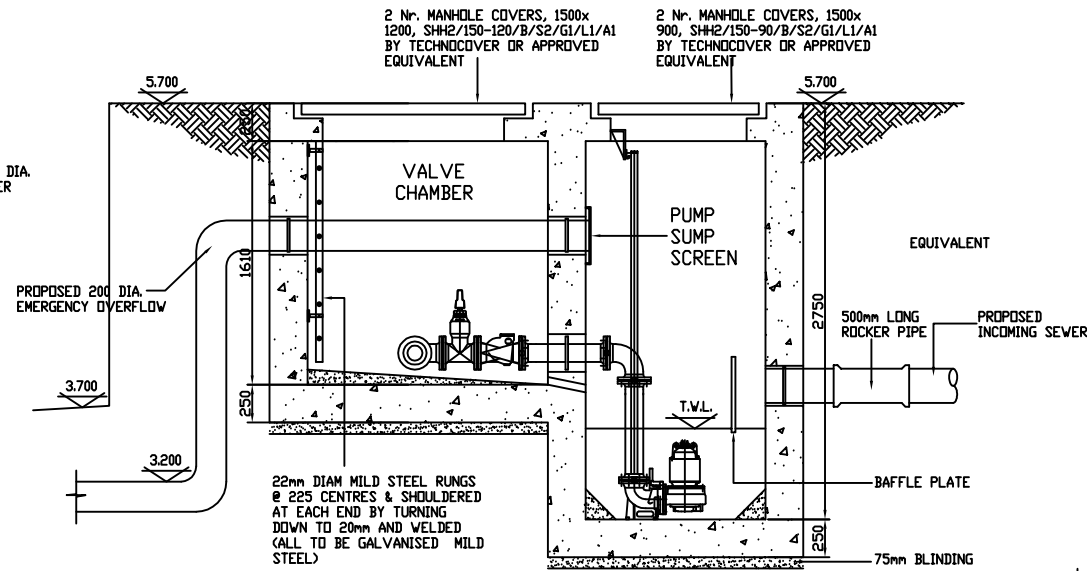
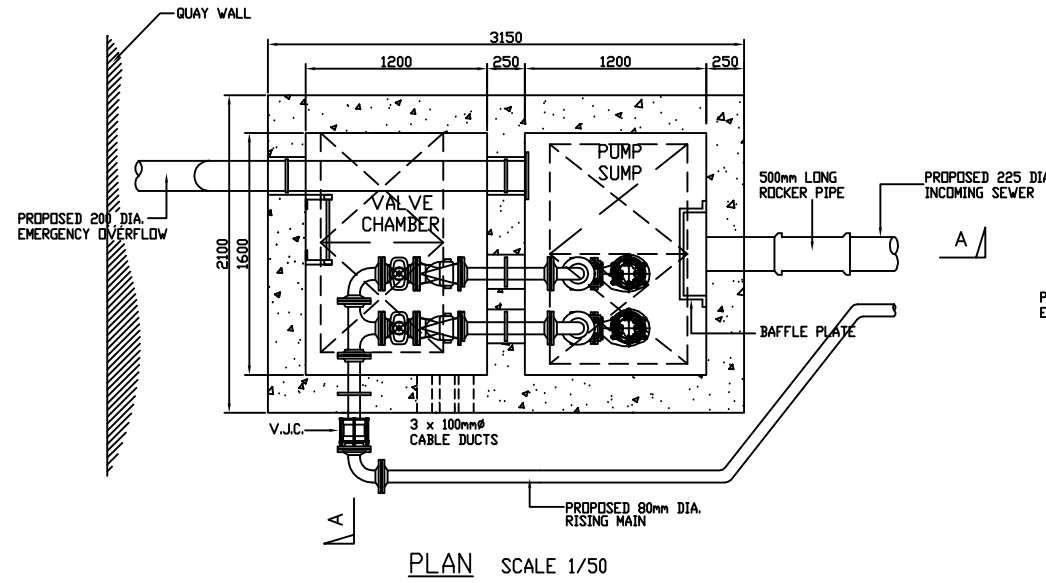
Job Title:  
CASTLETOWNSHEND\_WASTE\_WATER  
DISCHARGE\_LICENCE\_APPLICATION

Drawing Title:  
ATTACHMENT\_C.1  
PROPOSED\_WWTP\_PROCESS  
LAYOUT\_SECTIONS

Prepared By: D.O'DONOVAN	Scales: 1/250	Date: JUNE_2009
Drawing number: CEND_C1_02	Rev: -	

**NOTES**

1. Do not scale, use figured dimensions only. If in doubt ask.
2. All dimensions to be checked on site
3. Drawings to be read in conjunction with Licence application
4. Includes Ordnance Survey Ireland data reproduced under OSI Licence number Cork County Council CCMA2004/07 Unauthorised reproduction infringes Ordnance Survey Ireland and Government of Ireland



For inspection purposes only.  
Consent of copyright owner required for any other use.

No.	Date	Drawn	Surv	Chkd	Revision Description

**Cork County Council,  
Western Division.**

N.O'MAHONY, B.E.,  
SENR. ENGR. (WATER SERVICES),  
COURTHOUSE, SKIBBEREEN.  
TEL. 028/21299.  
FAX. 028/21995.

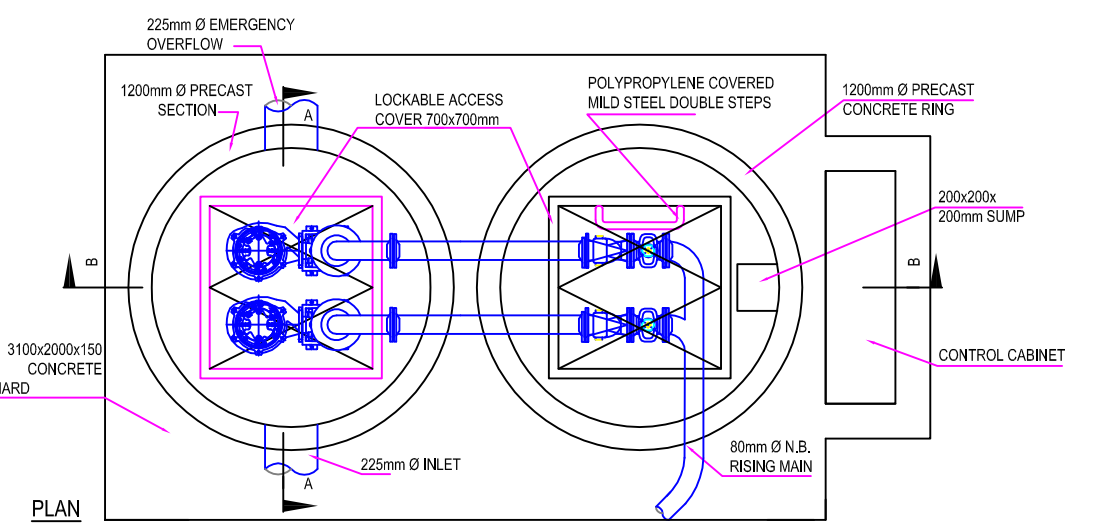
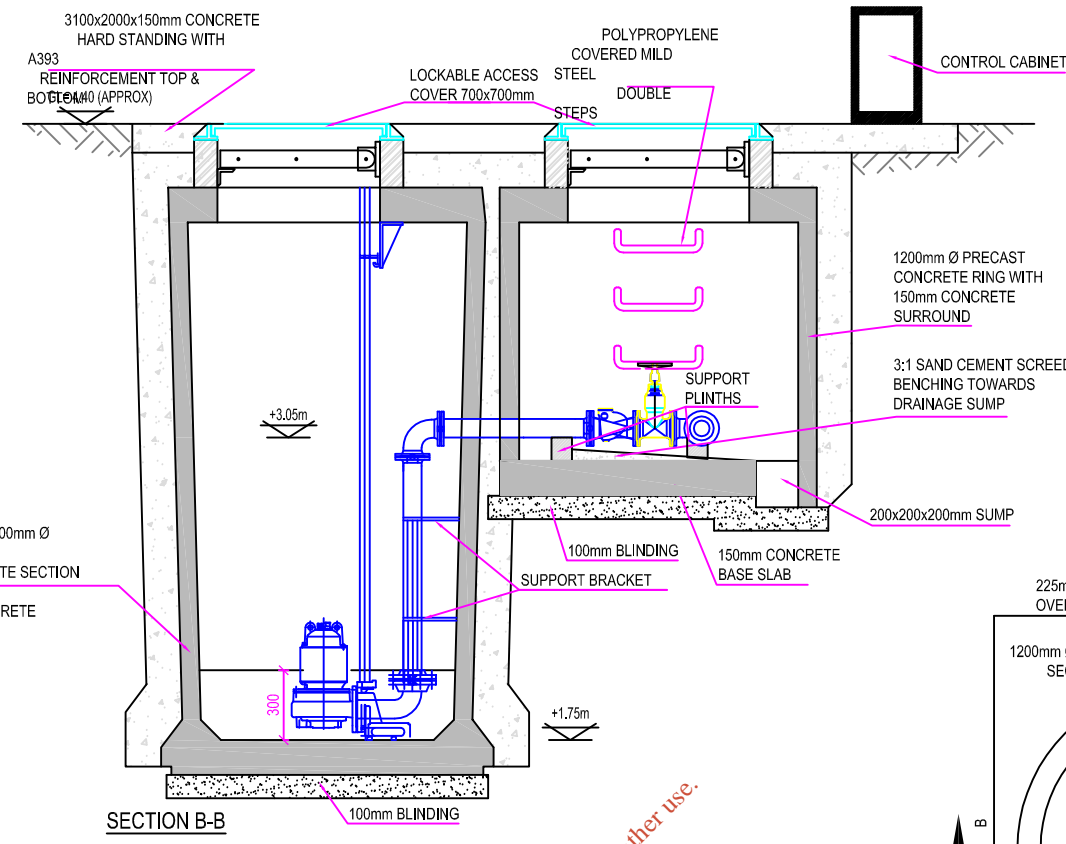
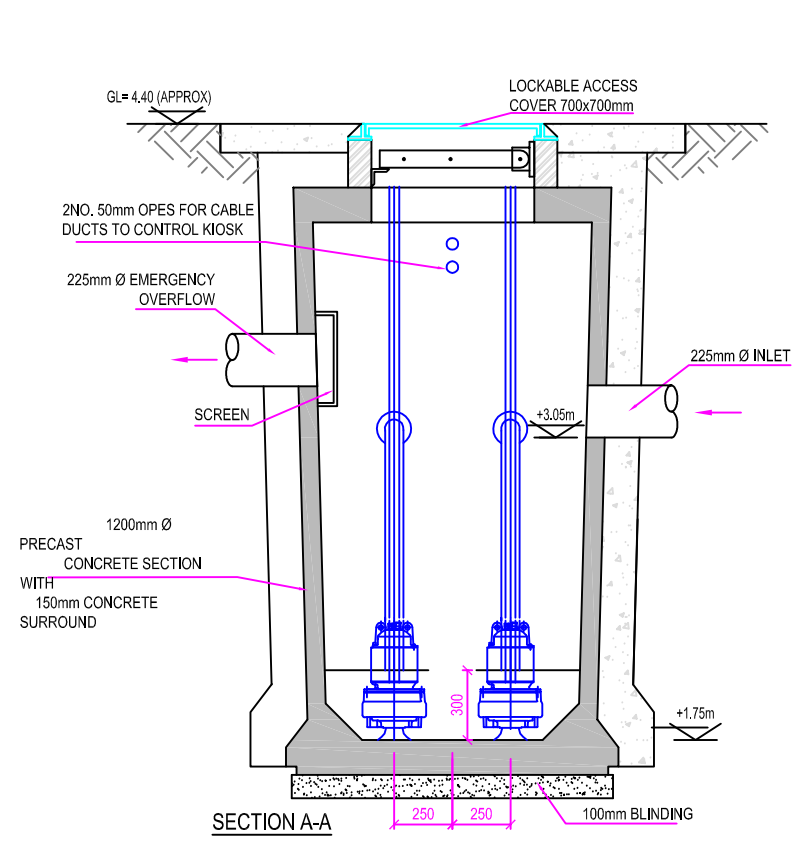
Job Title:  
CASTLETOWNSHEND\_WASTE\_WATER  
DISCHARGE\_LICENCE\_APPLICATION

Drawing Title:  
ATTACHMENT\_C1  
PROPOSED\_MAIN\_PUMPSTATION  
DETAILS

Prepared By: D.O'DONOVAN	Scales: SEE_DRAWING	Date: JUNE_2009
Drawing number: CEND_C1_03	Rev:	-

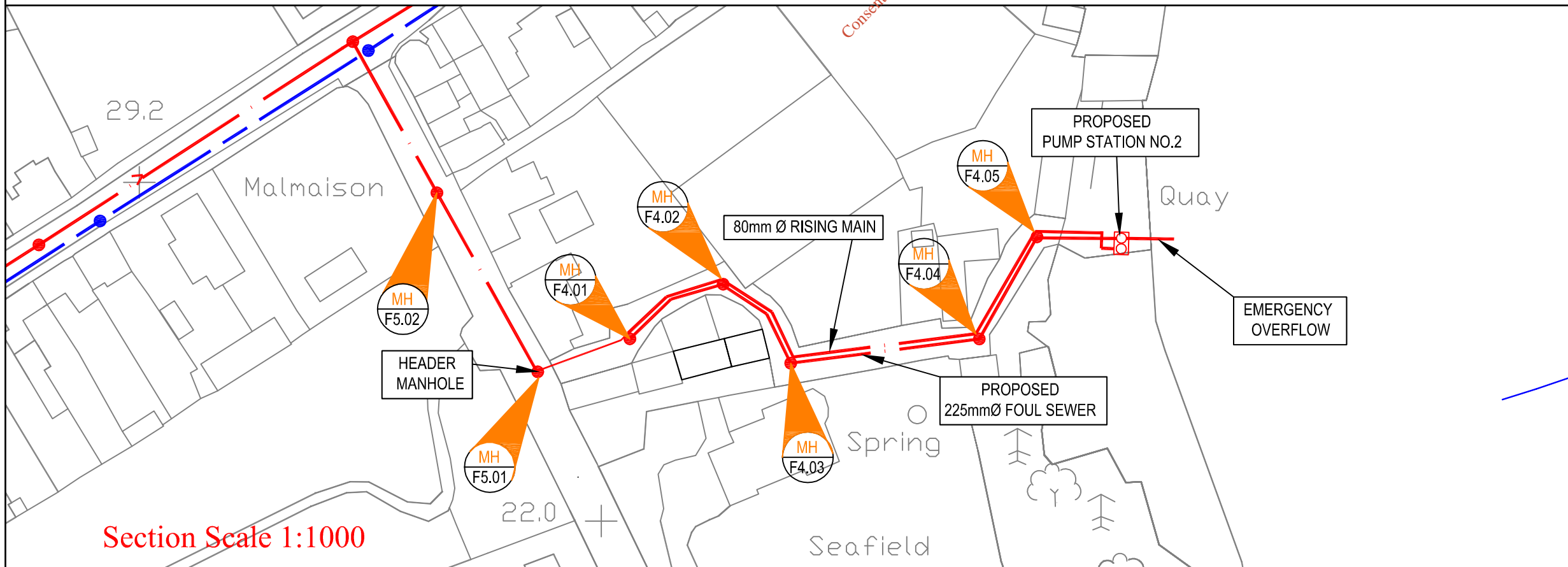
# NOTES

1. Do not scale, use figured dimensions only. If in doubt ask.
2. All dimensions to be checked on site
3. Drawings to be read in conjunction with Licence application
4. Includes Ordnance Survey Ireland data reproduced under OSI Licence number Cork County Council CCMA2004/07 Unauthorised reproduction infringes Ordnance Survey Ireland and Government of Ireland



Section Scale 1:25


For inspection purposes only.  
Consent of copyright owner required for any other use.



Section Scale 1:1000

No.	Date	Drawn	Surv	Chkd	Revision	Description

**Cork County Council,  
Western Division.**

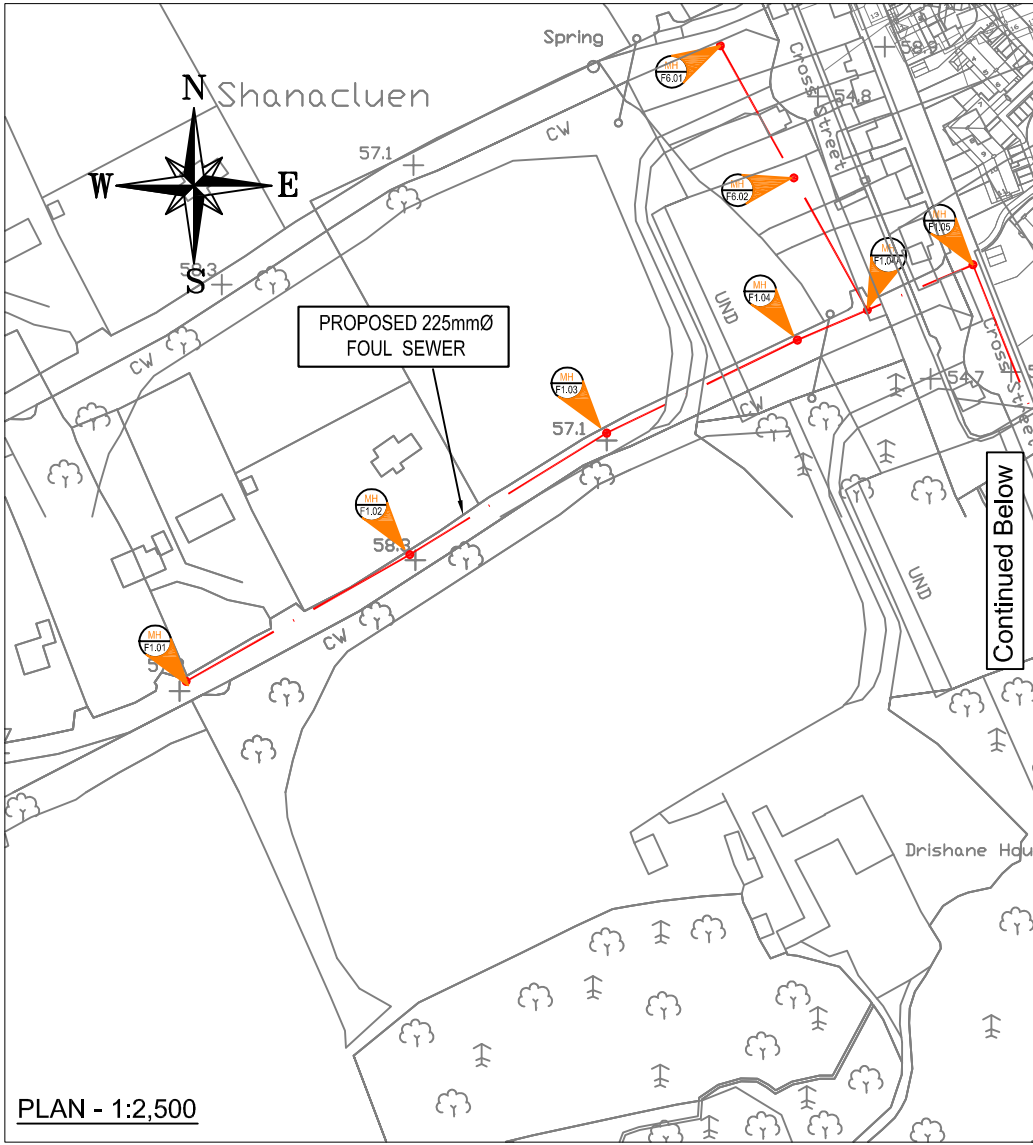


N.O'MAHONY, B.E.,  
SENR. ENGR. (WATER SERVICES),  
COURTHOUSE, SKIBBEREEN.  
TEL. 028/21299.  
FAX. 028/21995.

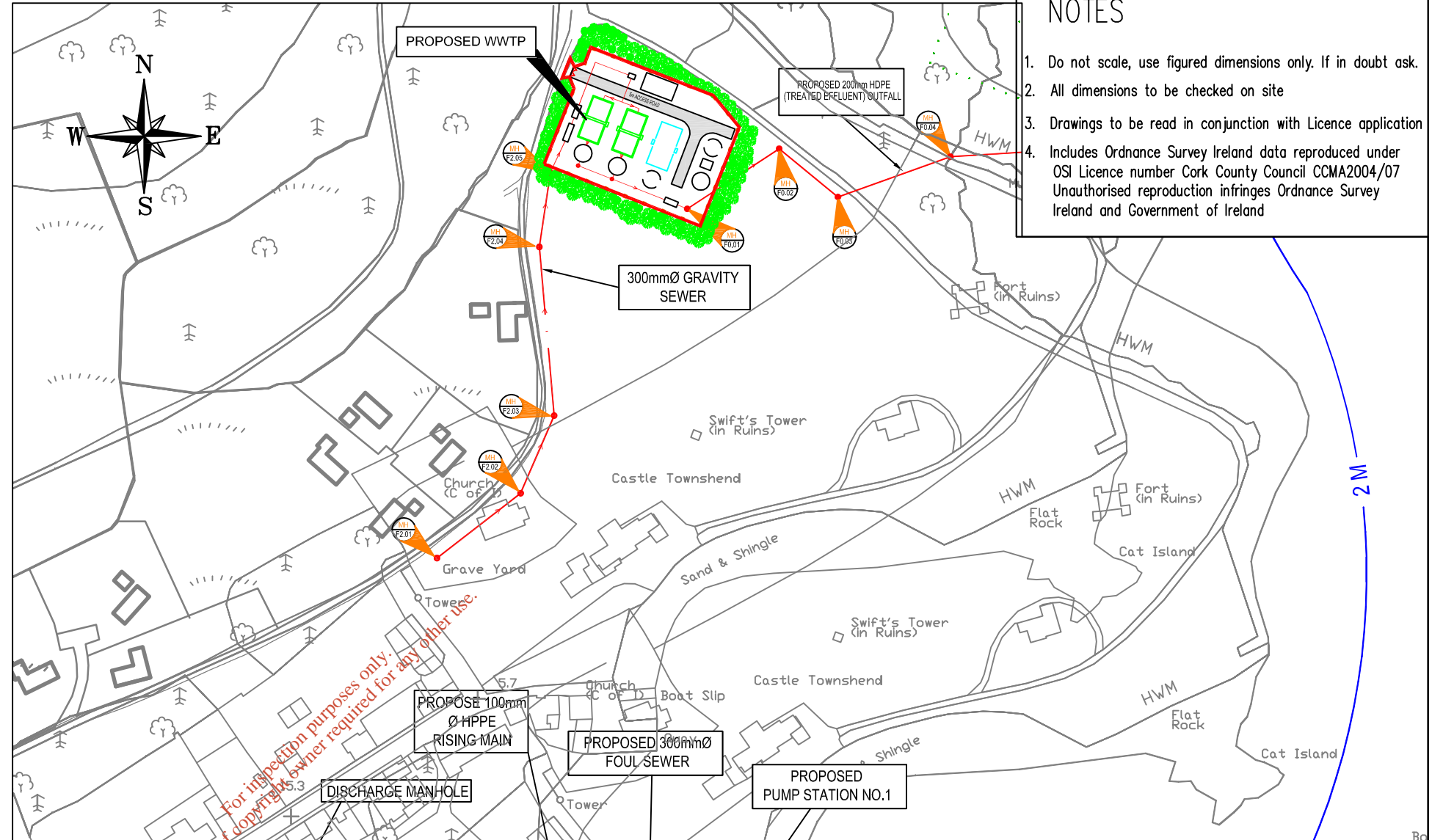
Job Title:  
CASTLETOWNSHEND\_WASTE\_WATER  
DISCHARGE\_LICENCE\_APPLICATION

Drawing Title:  
ATTACHMENT\_C1  
PROPOSED\_WESTERN\_QUAY  
PUMPSTATION\_DETAILS

Prepared By: D.O'DONOVAN	Scales: SEE_DRAWING	Date: JUNE_2009
Drawing number: CEND_C1_04	Rev:	-

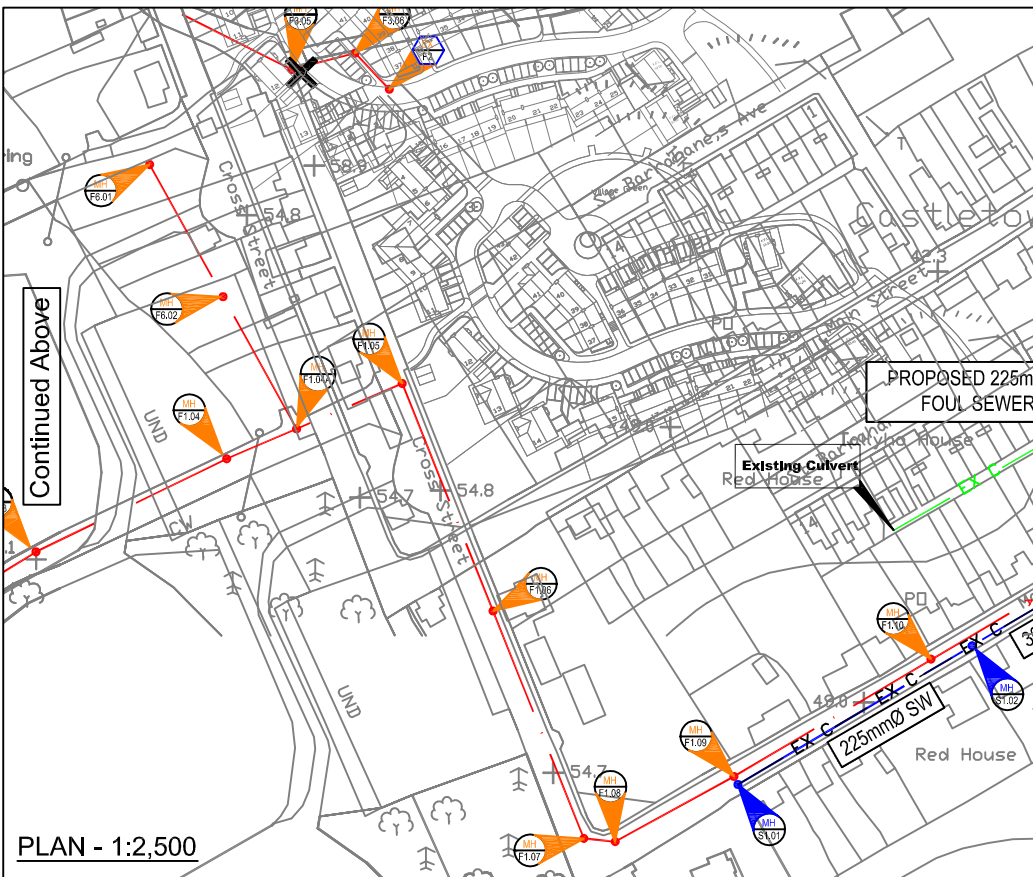


PLAN - 1:2,500

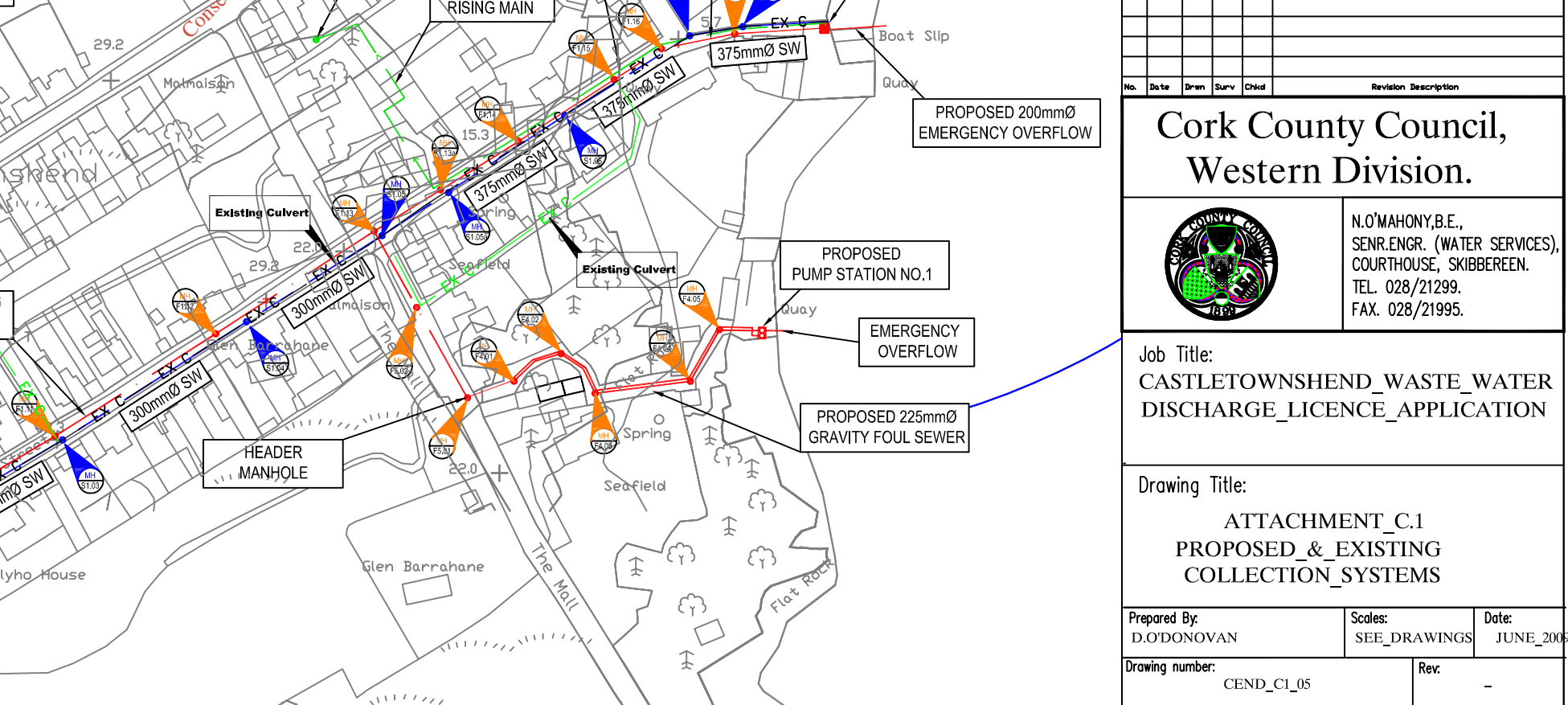


NOTES

1. Do not scale, use figured dimensions only. If in doubt ask.
2. All dimensions to be checked on site
3. Drawings to be read in conjunction with Licence application
4. Includes Ordnance Survey Ireland data reproduced under OSI Licence number Cork County Council CCMA2004/07 Unauthorised reproduction infringes Ordnance Survey Ireland and Government of Ireland




PLAN - 1:2,500



No.	Date	Drawn	Surv	Chkd	Revision Description

**Cork County Council,  
Western Division.**



N.O'MAHONY, B.E.,  
SEN. ENGR. (WATER SERVICES),  
COURTHOUSE, SKIBBEREEN.  
TEL. 028/21299.  
FAX. 028/21995.

Job Title:  
**CASTLETOWNSHEND\_WASTE\_WATER  
DISCHARGE\_LICENCE\_APPLICATION**

Drawing Title:  
**ATTACHMENT\_C.1  
PROPOSED\_&\_EXISTING  
COLLECTION\_SYSTEMS**

Prepared By: D.O'DONOVAN	Scales: SEE DRAWINGS	Date: JUNE 2009
Drawing number: CEND_C1_05	Rev: -	

# SECTION E

*For inspection purposes only.  
Consent of copyright owner required for any other use.*

---

Attachment E.2

*For inspection purposes only.  
Consent of copyright owner required for any other use.*

## **Attachment E2**

### **Supporting Information:**

- **Monitoring Programme**

### **Map :**

**CEND E2-01** – Locations of Sampling Points

*For inspection purposes only.  
Consent of copyright owner required for any other use.*



## **Attachment E.2 – Castletownshend Waste Water Discharge Licence Application – Monitoring and Sampling Points**

Grab samples have been collected recently of the effluent from the primary discharge as well as receiving waters and the results are included in Attachments E.4 and F.1 of this application.

There is no drinking water abstraction point downstream of the discharge point because it is a coastal discharge.

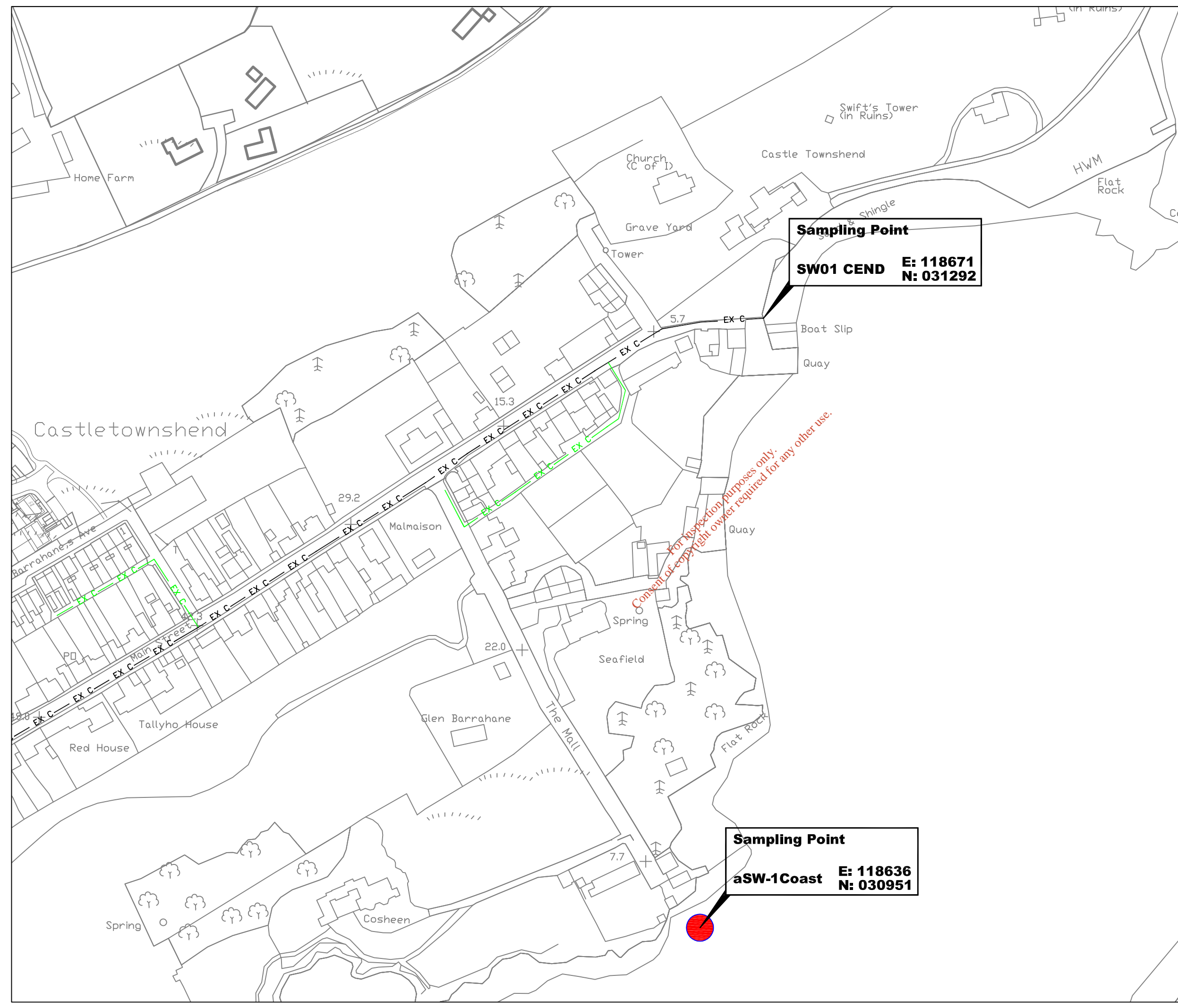
The recent sample analysis has been carried out by the Laboratory of Cork County Council which is accredited for a number of analytical tests under the Irish National Accreditation Board (INAB) under the ISO 17025 international standard. It is currently accredited for the following parameters under that standard system:

- pH
- Biochemical Oxygen Demand
- Chemical Oxygen Demand
- Suspended Solids
- Ammonia
- Ortho Phosphate
- Total Phosphate
- Chloride
- Sulphate

It is proposed to sample the primary discharge effluent and receiving waters once a year for the following parameters at the Cork County Council Laboratory in Skibbereen:

- pH
- Biochemical Oxygen Demand
- Chemical Oxygen Demand
- Suspended Solids
- Ammonia
- Ortho Phosphate
- Total Nitrogen

When the proposed WWTP for Castletownshend is constructed it will be operated under a Design, Build & Operate contract. A comprehensive monitoring and sampling programme will be undertaken by the contractor in accordance with the relevant standards and frequencies as set out by Cork County Council.




**NOTES**

1. Do not scale, use figured dimensions only. If in doubt ask
2. All dimensions to be checked on site
3. Drawings to be read in conjunction with Licence application
4. Includes Ordnance Survey Ireland data reproduced under OSi Licence number Cork County Council CCMA2004/07  
Unauthorised reproduction infringes Ordnance Survey Ireland and Government of Ireland



No.	Date	Drawn	Checked	Revision	Description

**Cork County Council,  
Western Division.**



N.O'MAHONY, B.E.,  
SENR. ENGR. (WATER SERVICES),  
COURTHOUSE, SKIBBEREEN.  
  
M. MURRELL,  
DIRECTOR OF SERVICES  
WEST CORK

Job Title:  
**CASTLETOWNSHEND\_WASTE\_WATER  
DISCHARGE\_LICENCE\_APPLICATION**

Drawing Title:  
**ATTACHMENT\_E2  
SAMPLING\_POINTS**

Prepared By: D.O'DONOVAN	Checked By: D_GROAKE	Date: JUNE.2009
Drawing number: CEND_E2-01	Scales: 1/2000	Rev: -

## Attachment E.4

---

*For inspection purposes only.  
Consent of copyright owner required for any other use.*

## **Attachment E4**

### **Supporting Information:**

- **Sampling Data**

*For inspection purposes only.  
Consent of copyright owner required for any other use.*

**Attachment E4 Castletownsend Discharge Outlet Table E4**

Sample Date	5/28/2009			
Sample	Boat Slip	Average	Kg/Day	Kg/year
Sample Code	GT772			
Flow M <sup>3</sup> /Day	*	*		
pH	7.5	7.5		
Temperature °C	*	*		
Cond 20°C	332	332		
SS mg/L	15	15		
NH <sub>3</sub> mg/L	1.2	1.2		
BOD mg/L	7	7		
COD mg/L	38	38		
TN mg/L	5.08	5.08		
Nitrite mg/L	0.249	0.249		
Nitrate mg/L	1.771	1.771		
TP mg/L	0.48	0.48		
O-PO4-P mg/L	0.12	0.12		
SO4 mg/L	<30	<30		
Phenols µg/L	*	*		
Atrazine µg/L	*	*		
Dichloromethane	<1	<1		
Simazine µg/L	*	*		
Toluene µg/L	<0.28	<0.28		
Tributyltin µg/L	*	*		
Xylenes µg/L	<1	<1		
Arsenic µg/L	*	*		
Chromium ug/L	<20	<20		
Copper ug/L	<20	<20		
Cyanide µg/L	7	7		
Fluoride µg/L	108	108		
Lead ug/L	<20	<20		
Nickel ug/L	<20	<20		
Zinc ug/L	<20	<20		
Boron ug/L	78.5	78.5		
Cadmium ug/L	<20	<20		
Mercury µg/L	*	*		
Selenium µg/L	*	*		
Barium ug/L	<20	<20		

For inspection purposes only.  
Consent of copyright owner required for any other use.

### Attachment E4 Castletownsend Downstream Table E4

Sample Date	5/28/2009				
Sample	Coastal	Coastal	Coastal	Coastal	Average
Sample Code	GT776				
Flow M <sup>3</sup> /Day	*				
pH	8.2				
Temperature °C	*				
Cond 20°C	45700				
SS mg/L	26				
NH <sub>3</sub> mg/L	0.5"	"saline interference			
BOD mg/L	1				
COD mg/L	24				
TN mg/L	0.28				
Nitrite mg/L	<0.10				
Nitrate mg/L	<0.50				
TP mg/L	0.079				
O-PO <sub>4</sub> -P mg/L	<0.05				
SO <sub>4</sub> mg/L	no result	"saline interference			
Phenols µg/L	*				
Atrazine µg/L	*				
Dichloromethane	<1				
Simazine µg/L	*				
Toluene µg/L	<0.28				
Tributyltin µg/L	*				
Xylenes µg/L	<1				
Arsenic µg/L	*				
Chromium ug/L	<20				
Copper ug/L	<20				
Cyanide µg/L	<5				
Fluoride µg/L	796	"saline interference			
Lead ug/L	<20				
Nickel ug/L	<20				
Zinc ug/L	<20				
Boron ug/L	2320				
Cadmium ug/L	<20				
Mercury µg/L	*				
Selenium µg/L	*				
Barium ug/L	<20				

For inspection purposes only. Consent of copyright owner required for any other use.

Agglomeration details

Leading Local Authority	Cork County Council
Co-Applicants	
Agglomeration	Castletownshend
Population Equivalent	650
Level of Treatment	Zero
Treatment plant address	Castletownsend, Skibbereen, Co. Cork
Grid Ref (12 digits, 6E, 6N)	118671 / 031292
EPA Reference No:	

Contact details

Contact Name:	Declan Groarke
Contact Address:	Water Services Section Cork County Council Western Division The Courthouse Skibbereen Co Cork
Contact Number:	028-21299
Contact Fax:	028-21995
Contact Email:	declan.groarke@corkcoco.ie

Consent of copyright owner required for any other use.

Table D.1(i)(a): EMISSIONS TO SURFACE/GROUND WATERS (Primary Discharge Point)

Discharge Point Code: SW-1

Local Authority Ref No:	SW01 CEND	
Source of Emission:	Primary Discharge	
Location:	Castlehaven Bay	
Grid Ref (12 digits, 6E, 6N)	118671 / 031292	
Name of Receiving waters:	Castlehaven Bay	
Water Body:	Coastal Water Body	
River Basin District	South Western RBD	
Designation of Receiving Waters:	None	
Flow Rate in Receiving Waters:	0	m <sup>3</sup> .sec <sup>-1</sup> Dry Weather Flow
	0	m <sup>3</sup> .sec <sup>-1</sup> 95% Weather Flow
Additional Comments (e.g. commentary on zero flow or other information deemed of value)	Receiving waters flow rates zero as discharge is to Coastal waters	

Emission Details:

(i) Volume emitted			
Normal/day	146.25 m <sup>3</sup>	Maximum/day	438.75 m <sup>3</sup>
Maximum rate/hour	18.28 m <sup>3</sup>	Period of emission (avg)	60 min/hr 24 hr/day 365 day/yr
Dry Weather Flow	0.01 m <sup>3</sup> /sec		

For inspection purposes only. Consent of copyright owner required for any other use.



Table D.1(i)(b): EMISSIONS TO SURFACE/GROUND WATERS - Characteristics of The Emission (Primary Discharge Point)

Discharge Point Code: SW-1

Substance	As discharged			
	Unit of Measurement	Sampling Method	Max Daily Avg.	kg/day
pH	pH	Grab	= 9	
Temperature	°C	Grab	= 0	
Electrical Conductivity (@ 25°C)	µS/cm	Grab	= 0	
Suspended Solids	mg/l	Grab	= 500	73.13
Ammonia (as N)	mg/l	Grab	= 0	0
Biochemical Oxygen Demand	mg/l	Grab	= 300	43.88
Chemical Oxygen Demand	mg/l	Grab	= 600	87.75
Total Nitrogen (as N)	mg/l	Grab	= 50	7.32
Nitrite (as N)	mg/l	Grab	= 0	0
Nitrate (as N)	mg/l	Grab	= 0	0
Total Phosphorous (as P)	mg/l	Grab	= 12	1.76
OrthoPhosphate (as P)	mg/l	Grab	= 10	1.46
Sulphate (SO <sub>4</sub> )	mg/l	Grab	= 0	0
Phenols (Sum)	µg/l	Grab	= 0	0

For Orthophosphate: this monitoring should be undertaken on a sample filtered on 0.45µm filter paper  
 For Phenols: USEPA Method 604, AWWA Standard Method 6240, or equivalent.

For inspection purposes only.  
 Consent of copyright owner required for any other use.

Table D.1(i)(c): DANGEROUS SUBSTANCE EMISSIONS TO SURFACE/GROUND WATERS - Characteristics of The Emission (Primary Discharge Point)

Discharge Point Code: SW-1

Substance	As discharged			
	Unit of Measurement	Sampling Method	Max Daily Avg.	kg/day
Atrazine	µg/l	Grab	= 0	0
Dichloromethane	µg/l	Grab	= 0	0
Simazine	µg/l	Grab	= 0	0
Toluene	µg/l	Grab	= 0	0
Tributyltin	µg/l	Grab	= 0	0
Xylenes	µg/l	Grab	= 0	0
Arsenic	µg/l	Grab	= 0	0
Chromium	µg/l	Grab	= 0	0
Copper	µg/l	Grab	= 0	0
Cyanide	µg/l	Grab	= 0	0
Flouride	µg/l	Grab	= 0	0
Lead	µg/l	Grab	= 0	0
Nickel	µg/l	Grab	= 0	0
Zinc	µg/l	Grab	= 0	0
Boron	µg/l	Grab	= 0	0
Cadmium	µg/l	Grab	= 0	0
Mercury	µg/l	Grab	= 0	0
Selenium	µg/l	Grab	= 0	0
Barium	µg/l	Grab	= 0	0

For Orthophosphate: this monitoring should be undertaken on a sample filtered on 0.45µm filter paper  
 For Phenols: USEPA Method 604, AWWA Standard Method 6246, or equivalent.

For inspection purposes only.  
 Consent of copyright owner required for any other use.

Table D.1(ii)(a): EMISSIONS TO SURFACE/GROUND WATERS (Secondary Discharge Point)

Discharge Point Code: SW-2

Local Authority Ref No:	SW02 CEND	
Source of Emission:	Secondary Discharge	
Location:	Castlehaven Bay	
Grid Ref (12 digits, 6E, 6N)	118652 / 031130	
Name of Receiving waters:	Castlehaven Bay	
Water Body:	Coastal Water Body	
River Basin District	South Western RBD	
Designation of Receiving Waters:	None	
Flow Rate in Receiving Waters:	0	m <sup>3</sup> .sec <sup>-1</sup> Dry Weather Flow
	0	m <sup>3</sup> .sec <sup>-1</sup> 95% Weather Flow
Additional Comments (e.g. commentary on zero flow or other information deemed of value)	Coastal Discharge therefore no flow rates available for receiving waters	

Emission Details:

(i) Volume emitted			
Normal/day	16.25 m <sup>3</sup>	Maximum/day	48.75 m <sup>3</sup>
Maximum rate/hour	2.03 m <sup>3</sup>	Period of emission (avg)	60 min/hr 24 hr/day 365 day/yr
Dry Weather Flow	0.001 m <sup>3</sup> /sec		

For inspection purposes only. Consent of copyright owner required for any other use.

Table D.1(ii)(b): EMISSIONS TO SURFACE/GROUND WATERS - Characteristics of The Emission (Secondary Discharge Point)

Discharge Point Code: SW-2

Substance	As discharged			
	Unit of Measurement	Sampling Method	Max Daily Avg.	kg/day
pH	pH	Grab	= 9	
Temperature	°C	Grab	= 0	
Electrical Conductivity (@ 25°C)	µS/cm	Grab	= 0	
Suspended Solids	mg/l	Grab	= 500	8.125
Ammonia (as N)	mg/l	Grab	= 0	0
Biochemical Oxygen Demand	mg/l	Grab	= 300	4.88
Chemical Oxygen Demand	mg/l	Grab	= 600	9.75
Total Nitrogen (as N)	mg/l	Grab	= 50	0.82
Nitrite (as N)	mg/l	Grab	= 0	0
Nitrate (as N)	mg/l	Grab	= 0	0
Total Phosphorous (as P)	mg/l	Grab	= 12	0.2
OrthoPhosphate (as P)	mg/l	Grab	= 10	0.16
Sulphate (SO <sub>4</sub> )	mg/l	Grab	= 0	0
Phenols (Sum)	µg/l	Grab	= 0	0

For Orthophosphate: this monitoring should be undertaken on a sample filtered on 0.45µm filter paper

For Phenols: USEPA Method 604, AWWA Standard Method 6240, or equivalent.

For inspection purposes only.  
Consent of copyright owner required for any other use.

Table D.1(ii)(c): DANGEROUS SUBSTANCE EMISSIONS TO SURFACE/GROUND WATERS - Characteristics of The Emission (Secondary Discharge Point)

Discharge Point Code: SW-2

Substance	As discharged			
	Unit of Measurement	Sampling Method	Max Daily Avg.	kg/day
Atrazine	µg/l	Grab	= 0	0
Dichloromethane	µg/l	Grab	= 0	0
Simazine	µg/l	Grab	= 0	0
Toluene	µg/l	Grab	= 0	0
Tributyltin	µg/l	Grab	= 0	0
Xylenes	µg/l	Grab	= 0	0
Arsenic	µg/l	Grab	= 0	0
Chromium	µg/l	Grab	= 0	0
Copper	µg/l	Grab	= 0	0
Cyanide	µg/l	Grab	= 0	0
Flouride	µg/l	Grab	= 0	0
Lead	µg/l	Grab	= 0	0
Nickel	µg/l	Grab	= 0	0
Zinc	µg/l	Grab	= 0	0
Boron	µg/l	Grab	= 0	0
Cadmium	µg/l	Grab	= 0	0
Mercury	µg/l	Grab	= 0	0
Selenium	µg/l	Grab	= 0	0
Barium	µg/l	Grab	= 0	0

For Orthophosphate: this monitoring should be undertaken on a sample filtered on 0.45µm filter paper

For Phenols: USEPA Method 604, AWWA Standard Method 6246, or equivalent.

Consent of copyright owner required for any other use.  
For inspection purposes only.

TABLE E.1(i): WASTE WATER FREQUENCY AND QUANTITY OF DISCHARGE – Primary and Secondary Discharge Points

Identification Code for Discharge point	Frequency of discharge (days/annum)	Quantity of Waste Water Discharged (m <sup>3</sup> /annum)
SW-1	365	53381.25
SW-2	365	5931.25

For inspection purposes only.  
Consent of copyright owner required for any other use.

TABLE E.1(ii): WASTE WATER FREQUENCY AND QUANTITY OF DISCHARGE – Storm Water Overflows

Identification Code for Discharge point	Frequency of discharge (days/annum)	Quantity of Waste Water Discharged (m <sup>3</sup> /annum)	Complies with Definition of Storm Water Overflow
---	-------------------------------------	--	--

For inspection purposes only.  
Consent of copyright owner required for any other use.

TABLE F.1(i)(a): SURFACE/GROUND WATER MONITORING

Primary Discharge Point

Discharge Point Code:	SW-1
MONITORING POINT CODE:	aSW-1a
Grid Ref (12 digits, 6E, 6N)	117563 / 030084

Parameter	Results (mg/l)				Sampling method	Limit of Quantitation	Analysis method / technique
	01/01/09	28/05/09					
pH		= 8.2			Grab	2	Electrochemical
Temperature	= 0				Grab	0.5	electrochemical
Electrical Conductivity (@ 25°C)		= 45700			Grab	0.5	Electrochemical
Suspended Solids		= 26			Grab	2.5	Gravimetric
Ammonia (as N)		= 0.5			Grab	0.02	Colorimetric
Biochemical Oxygen Demand		= 1			Grab	0.06	Electrochemical
Chemical Oxygen Demand		= 24			Grab	8	Digestion & Colorimetric
Dissolved Oxygen	= 0				Grab	0	ISE
Hardness (as CaCO <sub>3</sub> )	= 0				Grab	0	titrimetric
Total Nitrogen (as N)		= 0.28			Grab	0.5	Digestion & Colorimetric
Nitrite (as N)		< 0.1			Grab	0.013	colorimetric
Nitrate (as N)		< 0.5			Grab	0.04	Colorimetric
Total Phosphorous (as P)		= 0.079			Grab	0.2	Digestion & Colorimetric
OrthoPhosphate (as P)		< 0.05			Grab	0.02	Colorimetric
Sulphate (SO <sub>4</sub> )	= 0				Grab	30	Turbidimetric
Phenols (Sum)		< 0.1			Grab	0.1	GC-MS2

For Orthophosphate: this monitoring should be undertaken on a sample filtered on 0.45µm filter paper

For Phenols: USEPA Method 604, AWWA Standard Method 6240, or equivalent.

Additional Comments:	Default on 01/01/09 and 0 where results are not available. No results for Sulphate due to saline interference.
----------------------	---



TABLE F.1(i)(b): SURFACE/GROUND WATER MONITORING (Dangerous Substances)

Primary Discharge Point

Discharge Point Code:	SW-1
MONITORING POINT CODE:	aSW-1a
Grid Ref (12 digits, 6E, 6N)	117563 / 030084

Parameter	Results (µg/l)			Sampling method	Limit of Quantitation	Analysis method / technique
	01/01/09	28/05/09				
Atrazine		< 0.01		Grab	0.96	HPLC
Dichloromethane		< 1		Grab	1	GS-MS1
Simazine		< 0.01		Grab	0.01	HPLC
Toluene		< 0.28		Grab	0.28	GC-MS1
Tributyltin	= 0			Grab	0.02	GC-MS1
Xylenes		< 1		Grab	1	GC-MS1
Arsenic		= 2.7		Grab	0.96	ICP-MS
Chromium		< 20		Grab	20	ICP-OES
Copper		< 20		Grab	20	ICP-OES
Cyanide		< 5		Grab	5	Colorimetric
Flouride		= 796		Grab	100	ISE
Lead		< 20		Grab	20	ICP-OES
Nickel		< 20		Grab	20	ICP-OES
Zinc		< 20		Grab	20	ICP-OES
Boron		= 2320		Grab	20	ICP-OES
Cadmium		< 20		Grab	20	ICP-OES
Mercury		< 0.2		Grab	0.2	ICP-MS
Selenium		= 33.3		Grab	0.74	ICP-MS
Barium		< 20		Grab	20	ICP-OES

Additional Comments:	analysis for TBT as ug/l of Sn Default on 01/01/09 and 0 where results are not available yet. Results for TBT to follow.
----------------------	---

TABLE F.1(ii)(a): SURFACE/GROUND WATER MONITORING

Secondary Discharge Point

Discharge Point Code:	SW-2
MONITORING POINT CODE:	aSW-2a
Grid Ref (12 digits, 6E, 6N)	117563 / 030084

Parameter	Results (mg/l)				Sampling method	Limit of Quantitation	Analysis method / technique
	01/01/09	28/05/09					
pH		= 8.2			Grab	2	Electrochemical
Temperature	= 0				Grab	0.5	electrochemical
Electrical Conductivity (@ 25°C)		= 45700			Grab	0.5	Electrochemical
Suspended Solids		= 26			Grab	2.5	Gravimetric
Ammonia (as N)		= 0.5			Grab	0.02	Colorimetric
Biochemical Oxygen Demand		= 1			Grab	0.06	Electrochemical
Chemical Oxygen Demand		= 24			Grab	8	Digestion & Colorimetric
Dissolved Oxygen	= 0				Grab	0	ISE
Hardness (as CaCO <sub>3</sub> )	= 0				Grab	0	titrimetric
Total Nitrogen (as N)		= 0.28			Grab	0.5	Digestion & Colorimetric
Nitrite (as N)		< 0.1			Grab	0.013	colorimetric
Nitrate (as N)		< 0.5			Grab	0.04	Colorimetric
Total Phosphorous (as P)		= 0.079			Grab	0.2	Digestion & Colorimetric
OrthoPhosphate (as P)		< 0.05			Grab	0.02	Colorimetric
Sulphate (SO <sub>4</sub> )	= 0				Grab	30	Turbidimetric
Phenols (Sum)		< 0.1			Grab	0.1	GC-MS2

For Orthophosphate: this monitoring should be undertaken on a sample filtered on 0.45µm filter paper

For Phenols: USEPA Method 604, AWWA Standard Method 6240, or equivalent.

Additional Comments:	Default on 01/01/09 and 0 where results are not available. No results for Sulphate due to saline interference.
----------------------	---

TABLE F.1(ii)(b): SURFACE/GROUND WATER MONITORING (Dangerous Substances)

## Secondary Discharge Point

Discharge Point Code:	SW-2
MONITORING POINT CODE:	aSW-2a
Grid Ref (12 digits, 6E, 6N)	117563 / 030084

Parameter	Results (µg/l)			Sampling method	Limit of Quantitation	Analysis method / technique
	01/01/09	28/05/09				
Atrazine		< 0.01		Grab	0.96	HPLC
Dichloromethane		< 1		Grab	1	GS-MS1
Simazine		< 0.01		Grab	0.01	HPLC
Toluene		< 0.28		Grab	0.28	GC-MS1
Tributyltin	= 0			Grab	0.02	GC-MS1
Xylenes		< 1		Grab	1	GC-MS1
Arsenic		= 2.7		Grab	0.96	ICP-MS
Chromium		< 20		Grab	20	ICP-OES
Copper		< 20		Grab	20	ICP-OES
Cyanide		< 5		Grab	5	Colorimetric
Flouride		= 796		Grab	100	ISE
Lead		< 20		Grab	20	ICP-OES
Nickel		< 20		Grab	20	ICP-OES
Zinc		< 20		Grab	20	ICP-OES
Boron		= 2320		Grab	20	ICP-OES
Cadmium		< 20		Grab	20	ICP-OES
Mercury		< 0.2		Grab	0.2	ICP-MS
Selenium		= 33.3		Grab	0.74	ICP-MS
Barium		< 20		Grab	20	ICP-OES

Additional Comments:	analysis for TBT as ug/l of Sn Default on 01/01/09 and 0 where results are not available yet. Results for TBT to follow.
----------------------	---

**Annex 2: Check List For Regulation 16 Compliance**

Regulation 16 of the waste water discharge (Authorisation) Regulations 2007 (S.I. No. 684 of 2007) sets out the information which must, in all cases, accompany a discharge licence application. In order to ensure that the application fully complies with the legal requirements of regulation 16 of the 2007 Regulations, all applicants should complete the following.

In each case, refer to the attachment number(s), of your application which contains(s) the information requested in the appropriate sub-article.

<b>Regulation 16(1)</b> <b>In the case of an application for a waste water discharge licence, the application shall -</b>		<b>Attachment Number</b>	<b>Checked by Applicant</b>
(a)	give the name, address, telefax number (if any) and telephone number of the applicant (and, if different, of the operator of any treatment plant concerned) and the address to which correspondence relating to the application should be sent and, if the operator is a body corporate, the address of its registered office or principal office,	B.1	Yes
(b)	give the name of the water services authority in whose functional area the relevant waste water discharge takes place or is to take place, if different from that of the applicant,	Not applicable	Yes
(c)	give the location or postal address (including where appropriate, the name of the townland or townlands) and the National Grid reference of the location of the waste water treatment plant and/or the waste water discharge point or points to which the application relates,	B.2	Yes
(d)	state the population equivalent of the agglomeration to which the application relates,	B.9(I)	Yes
(e)	specify the content and extent of the waste water discharge, the level of treatment provided, if any, and the flow and type of discharge,	C, D	Yes
(f)	give details of the receiving water body, including its protected area status, if any, and details of any sensitive areas or protected areas or both in the vicinity of the discharge point or points likely to be affected by the discharge concerned, and for discharges to ground provide details of groundwater protection schemes in place for the receiving water body and all associated hydrogeological and geological assessments related to the receiving water environment in the vicinity of the discharge.	F.1	Yes
(g)	identify monitoring and sampling points and indicate proposed arrangements for the monitoring of discharges and, if Regulation 17 does not apply, provide details of the likely environmental consequences of any such discharges,	E.2, E.3	Yes
(h)	in the case of an existing waste water treatment plant, specify the sampling data pertaining to the discharge based on the samples taken in the 12 months preceding the making of the application,	E.4	Yes
(i)	describe the existing or proposed measures, including emergency procedures, to prevent unintended waste water discharges and to minimise the impact on the environment of any such discharges,	G.3	Yes
(j)	give particulars of the nearest downstream drinking water abstraction point or points to the discharge point or points,	Not applicable	Yes
(k)	give details, and an assessment of the effects, of any existing or proposed emissions on the environment, including any environmental medium other than those into which the emissions are, or are to be made, and of proposed measures to prevent or eliminate or, where that is not practicable, to limit any pollution caused in such discharges,	F.1	Yes
(l)	give detail of compliance with relevant monitoring requirements and treatment standards contained in any applicable Council Directives of Regulations,	E.1, E.4	Yes
(m)	give details of any work necessary to meet relevant effluent discharge standards and a timeframe and schedule for such work.	G.1	Yes
(n)	Any other information as may be stipulated by the Agency.	Not applicable	Yes
<b>Regulation 16(3)</b> <b>Without prejudice to Regulation 16 (1) and (2), an application for a licence shall be accompanied by -</b>		<b>Attachment Number</b>	<b>Checked by Applicant</b>
(a)	a copy of the notice of intention to make an application given pursuant to Regulation 9,	B.8	Yes
(b)	where appropriate, a copy of the notice given to a relevant water services authority under Regulation 13,	Not applicable	Yes
(c)	Such other particulars, drawings, maps, reports and supporting documentation as are necessary to identify and describe, as appropriate -	B	Yes
(c) (i)	the point or points, including storm water overflows, from which a discharge or discharges take place or are to take place, and	B.3, B.4	Yes
(c) (ii)	the point or points at which monitoring and sampling are undertaken or are to be undertaken,	E.3	Yes
(d)	such fee as is appropriate having regard to the provisions of Regulations 38 and 39.	B.9(III)	Yes

Regulation 16(4) An original application shall be accompanied by 2 copies of it and of all accompanying documents and particulars as required under Regulation 16(3) in hardcopy or in an electronic or other format as specified by the Agency.		Attachment Number	Checked by Applicant
1	An Original Application shall be accompanied by 2 copies of it and of all accompanying documents and particulars as required under regulation 16(3) in hardcopy or in electronic or other format as specified by the agency.		Yes
Regulation 16(5) For the purpose of paragraph (4), all or part of the 2 copies of the said application and associated documents and particulars may, with the agreement of the Agency, be submitted in an electronic or other format specified by the Agency.		Attachment Number	Checked by Applicant
1	Signed original.		Yes
2	2 hardcopies of application provided or 2 CD versions of application (PDF files) provided.		Yes
3	1 CD of geo-referenced digital files provided.		Yes
Regulation 17 Where a treatment plant associated with the relevant waste water works is or has been subject to the European Communities (Environmental Impact Assessment) Regulations 1989 to 2001, in addition to compliance with the requirements of Regulation 16, an application in respect of the relevant discharge shall be accompanied by a copy of an environmental impact statement and approval in accordance with the Act of 2000 in respect of the said development and may be submitted in an electronic or other format specified by the Agency		Attachment Number	Checked by Applicant
1	EIA provided if applicable	Not applicable	Yes
2	2 hardcopies of EIS provided if applicable.	Not applicable	Yes
3	2 CD versions of EIS, as PDF files, provided.	Not applicable	Yes
Regulation 24 In the case of an application for a waste water discharge certificate of authorisation, the application shall –		Attachment Number	Checked by Applicant
(a)	give the name, address, telefax number (if any) and telephone number of the applicant and the address to which correspondence relating to the application should be sent and, if the operator of the waste water works is a body corporate, the address of its registered office or principal office		
(b)	give the name of the water services authority in whose functional area the relevant waste water discharge takes place or is to take place, if different from that of the applicant,		
(c)	give the location or postal address (including where appropriate, the name of the townland or townlands) and the National Grid reference of the location of the discharge point or points to which the application relates,		
(d)	state the population equivalent of the agglomeration to which the application relates,		
(e)	in the case of an application for the review of a certificate, specify the reference number given to the relevant certificate in the register,		
(f)	specify the content and extent of the waste water discharge, the level of treatment provided and the flow and type of discharge,		
(g)	give details of the receiving water body, its protected area status, if any, and details of any sensitive areas or protected areas, or both, in the vicinity of the discharge point or points or likely to be affected by the discharge concerned,		
(h)	identify monitoring and sampling points and indicate proposed arrangements for the monitoring of discharges and of the likely environmental consequences of any such discharges,		
(i)	in the case of an existing discharge, specify the sampling data pertaining to the discharge based on the samples taken in the 12 months preceding the making of the application,		
(j)	describe the existing or proposed measures, including emergency procedures, to prevent unauthorised or unexpected waste water discharges and to minimise the impact on the environment of any such discharges,		
(k)	give particulars of the location of the nearest downstream drinking water abstraction point or points to the discharge point or points associated with the waste water works,		
(l)	give details of any designation under any Council Directive or Regulations that apply in relation to the receiving waters,		
(m)	give details of compliance with any applicable monitoring requirements and treatment standards,		
(n)	give details of any work necessary to meet relevant effluent discharge standards and a timeframe and schedule for such work,		
(o)	give any other information as may be stipulated by the Agency, and		
(p)	be accompanied by such fee as is appropriate having regard to the provisions of Regulations 38 and 39.		