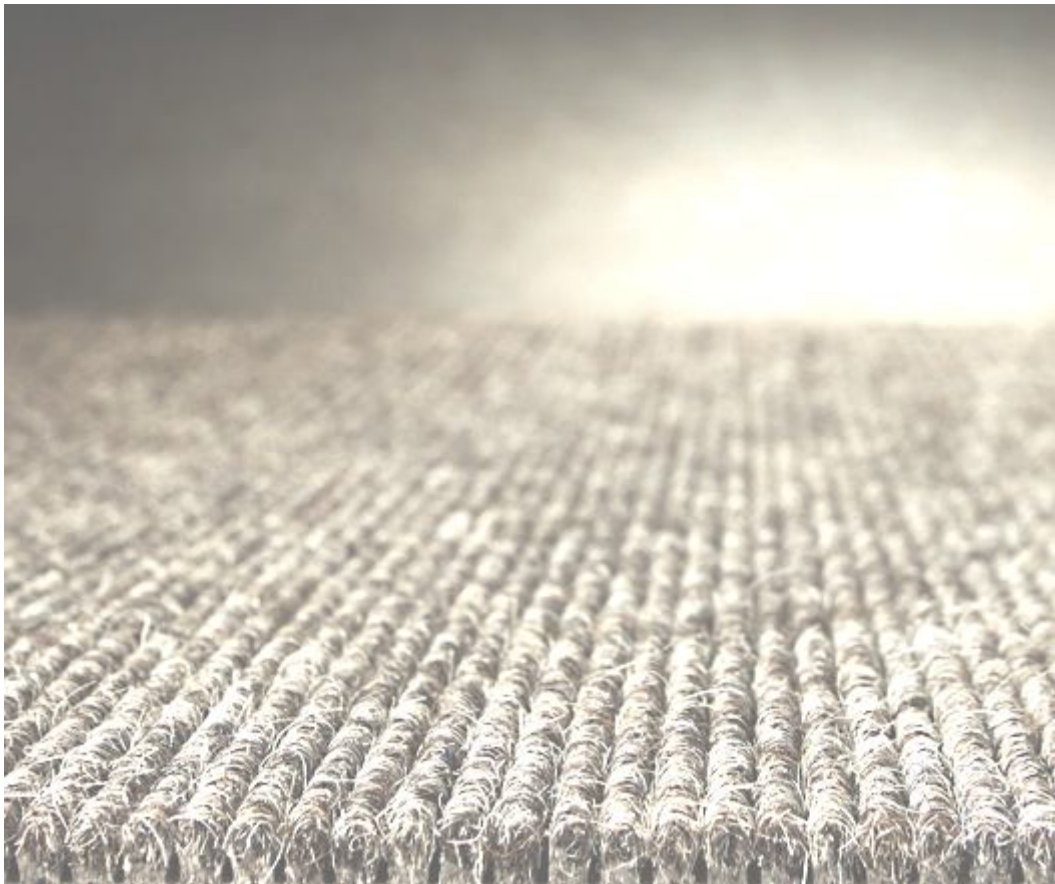


WATERFORD CARPETS LTD
ANNUAL ENVIRONMENTAL REPORT
2008



tretford[®]

EXECUTIVE SUMMARY

As Part of the environmental management plan, progress was made in the following areas:

Environmental Management System

Waterford Carpets made a decision to update their Environmental Management System during 2007 with a view to applying for certification to ISO 14001 by the end of 2008. We have been issued ISO 14001 Certificate in October 2008.

Training

The training programme has yet to be implemented. Initial training has taken place in November 2008. A new set of Objectives and targets have been established and it is expected to have the environmental training programme completely finalised and running in 2009.

Waste Reduction

The overall waste per unit of production was reduced during 2008. New Objectives and Targets have been set for incoming years.

Emergency Response

New emergency response procedures have been drawn up in 2008. Implementation and training for relevant employees in these procedures will take place in 2009.



TABLE OF CONTENTS

EXECUTIVE SUMMARY	2
TABLE OF CONTENTS	3
LIST OF TABLES	4
1.0 INTRODUCTION	5
1.1 COMPANY DETAILS	5
1.2 COMPANY DESCRIPTION	6
1.3 ENVIRONMENTAL POLICY	7
1.4 COMPANY ORGANISATION CHART	8
2.0 SUMMARY INFORMATION	9
2.1 EMISSIONS TO SEWER	9
2.2 EMISSIONS TO SURFACE WATERS	9
2.3 EMISSIONS TO ATMOSPHERE	11
2.4 WASTE MANAGEMENT	12
2.4.1 HAZARDOUS WASTE	12
2.4.2 NON-HAZARDOUS WASTE	12
2.5 ENERGY CONSUMPTION	15
2.6 WATER CONSUMPTION	16
2.7 ENVIRONMENTAL INCIDENTS AND COMPLAINTS	17
2.8 AGENCY MONITORING AND ENFORCEMENT	18
3.0 ENVIRONMENTAL MANAGEMENT	20
3.1 ENVIRONMENTAL OBJECTIVES AND TARGETS	21
3.2 ENVIRONMENTAL MANAGEMENT PROGRAMME	25
4.0 LICENCE SPECIFIC REPORTS	30
4.1 NOISE SURVEY	30
4.1.1 BOUNDARY NOISE MEASUREMENTS	30
4.1.2 NOISE SENSITIVE LOCATIONS	31
5.0 LIST OF APPENDICES	33
5.1 PIPEWORK INSPECTION	33
5.2 SURFACE WATER CHECKLIST	33
5.3 BUND TESTING REPORT	33
5.4 AER / PRTR REPORTING WORKBOOK	33



LIST OF TABLES

TABLE 1. EMISSIONS TO SEWER FOR 2007 AND 2008	9
TABLE 2 RESULTS OF SURFACE WATER MONITORING FOR 2007 AND 2008 (SE2)	10
TABLE 3 RESULTS OF AIR EMISSIONS MONITORING FOR 2007 AND 2008	11
TABLE 4 SUMMARY INFORMATION ON WASTE	13
TABLE 5 INFORMATION ON WASTE STREAM	14
TABLE 6 ENERGY CONSUMPTION	15
TABLE 7 WATER CONSUMPTION	16
TABLE 8 BOUNDARY NOISE MONITORING RESULTS	30
TABLE 9 NOISE SENSITIVE LOCATIONS DAY-TIME MONITORING RESULTS	31
TABLE 10 NOISE SENSITIVE LOCATIONS NIGHT-TIME MONITORING RESULTS	31



1.0 INTRODUCTION

This Annual Environmental Report (AER) for Waterford Carpets Ltd presents information for the period from 1st January to the 31st December 2008. The report format follows *EPA Guidance Note for Annual Environmental Report*.

The following items are included in this report:

- Summary of emissions to atmosphere
- Summary of emissions to water
- Waste management report
- Resource consumption summary
- Complaints summary
- Reported incidents summary
- Environmental management programme report and proposal
- Schedule of objectives and targets
- Noise survey results summary
- Water usage report

Waterford Carpets Ltd. has developed its environmental policy as part of its environmental management system. The company has been granted with ISO 14001 Environmental Management Systems Standard Certification in October 2008.

1.1 Company Details

Licence Register Number:	P0510-01
Name:	Waterford Carpets Limited.
Address:	Unit 201 Cork Road Industrial Park, Waterford.
Contact Information:	Mr. Noel Cunningham Tel: 051-375941 Email: ncunningham@tretford.ie



1.2 Company Description

Waterford Carpets Limited has been in operation since September 1969 in the IDA Industrial Park Waterford. Waterford Carpets Limited manufactures a ribbed heavy contract non-woven carpet. This carpet is manufactured under the trade name tretford. The carpet is manufactured from a combination of goat hair, nylon, rayon and wool

No dyeing or treatment of the carpet takes place on the site at present, nor does the process of moth proofing.

Waterford Carpets Limited operates a continuous production system from 08.00 Monday to 08.00 Saturday on a three-shift rota system.

At Present Waterford Carpets Limited employs 40 personnel.

Waterford Carpets' management and staff recognises the importance of environmental protection as an essential requirement of its operations. Among the stated values of Waterford Carpets are the following:

- That our products will be safe to make and to use.
- We will conserve natural resources and we will continue to invest in better environment protection.
- Waterford Carpets Ltd. will undertake to conduct its business in a manner, which protects the environment of the Customers, Employees and Community in which it operates.

The challenge is to achieve a high quality environment, to this end; the company is committed to continuous improvement - "reduce, reuse & recycle"- at all levels throughout the organisation.



1.3 Environmental Policy

The General Management of Waterford Carpets Limited is committed to pollution prevention and environmental protection at its facility. Waterford Carpets Limited aims to achieve the highest standards of environmental performance in the interest of all our stakeholders, whether they are employees, neighbours, the general public or the natural environment.

Waterford Carpets Limited is committed to complying with all environmental legislation and regulations that may apply to the industry and we will make every effort to comply with the requirements of our Integrated Pollution Control Licence. We will adhere to the principles of responsible care and we strive for continuous improvement in its implementation.

By preparing and implementing an Environmental Management System, which will include policies, objectives and targets, we will administer a continuous programme designed to ensure that the products manufactured at Waterford Carpets Limited will not compromise or damage the environment.

Waterford Carpets Limited will review the Environmental Management System annually. We will also review our environmental aspects register and set Environmental Objectives and targets accordingly.

Waterford Carpets will examine and evaluate the environmental implications of any processes and products, and cleaner technologies will be investigated and utilised where possible. Waste avoidance and reduction plus a waste recycling initiative will be vigorously pursued and implemented.

Waterford Carpets will continuously examine, evaluate and review energy usage in its manufacturing processes and implement an energy conservation programme. We will ensure that adequate operational procedures and emergency plans are implemented and reviewed on an ongoing basis. We will ensure that our employees receive adequate training in relation to our environmental policies and procedures and will review these training needs as may be required.

We are committed to continuous improvement of our Environmental Management System and we will ensure that it shall be integrated at all levels within our organisation. We will strive for ever-improving environmental performance and we will strive to protect the environment for our employees, neighbours and all our other stakeholders.

Noel Cunningham
Managing Director.



1.4 Company Organisation Chart

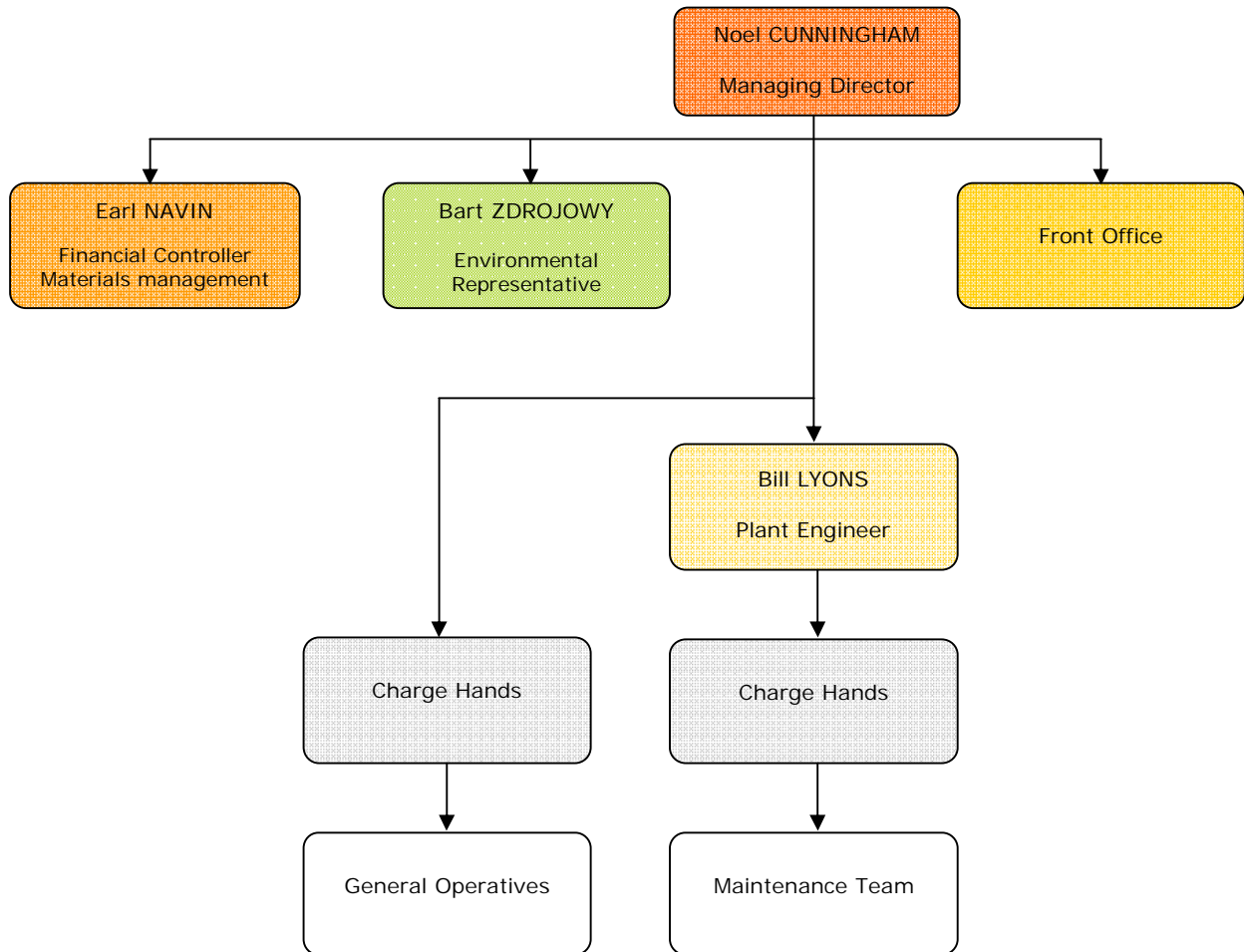


Figure 1. Organisation Chart for Waterford Carpets Ltd.

NB. Direct environmental responsibilities are designated to the site environmental representative. All other employees have support roles.



2.0 SUMMARY INFORMATION

This section contains a summary of the information regarding:

- Annual emissions data, including discharges to waters, air emissions, waste management and noise.
- Energy and water usage
- Environmental incidents and complaints

This section of the AER provides summary data on emissions/discharges to various environmental media from the Waterford Carpets site.

2.1 Emissions to Sewer

This section of the AER provides information pertaining to Waterford Carpets emissions to sewer.

Table 1. Emissions to Sewer for 2007 and 2008

Parameter	Emissions (18/12/2008)	Emissions (21/11/2007)	Limit Value	Monitoring Frequency
Temperature	16°C	17°C	40°C max	Annually
PH	7.6	7.3	6-9	Annually
BOD (mg/L)	<2	2	60	Annually
COD (mg/L)	<4	14	1000	Annually
Suspended Solids (mg/L)	1	3	120	Annually

The emissions to sewer data indicate overall compliance with the IPPC emission limit values (ELV's). There were no non-compliances recorded during 2008.

2.2 Emissions to Surface Waters

Waterford Carpets discharges non-process water at discharge points SE2 in accordance with Schedule 4(i) of the IPPC Licence (Reg. No. P0510-01).

Non-process water consists of:

- Storm water run-off from roofs.
- Storm water run-off from areas including car parks and paved areas.

Surface water discharges at SE2 are measured on a quarterly basis for pH, COD and conductivity. A visual inspection takes place twice weekly.

A summary of the surface water discharge monitoring results is outlined in the table below.



Table 2 Results of Surface Water Monitoring for 2007 and 2008 (SE2)

Quarter	Parameter	Emissions (24 /01/2007)	Emissions (12 /01/2008)	Limit Value
Q1	pH	7.1	6.9	6-9
	COD (mg/l)	28	24	-
	Conductivity (uS/cm)	540	289	-
Quarter	Parameter	Emissions (10 /06/2007)	Emissions (22 /04/2008)	Limit Value
Q2	pH	7.4	7.7	6-9
	COD (mg/l)	32	84	-
	Conductivity (uS/cm)	480	185	-
Quarter	Parameter	Emissions (14 /08/2007)	Emissions (19 /08/2008)	Limit Value
Q3	pH	7.1	7.4	6-9
	COD (mg/l)	28	73	-
	Conductivity (uS/cm)	360	203	-
Quarter	Parameter	Emissions (21 /11/2007)	Emissions (18 /12/2008)	Limit Value
Q4	pH	7.0	7.3	6-9
	COD (mg/l)	34	7	-
	Conductivity (uS/cm)	392	178	-



2.3 Emissions to Atmosphere

The emissions to atmosphere monitoring conducted at Waterford Carpets Ltd. was carried out to fulfil the requirements of Condition 5 and Schedule 1 (i) of IPPC licence registration number P0510-01.

Table 3 Results of Air Emissions Monitoring for 2007 and 2008

Emission Point	Date		Limit Value
	Particulates (mg/Nm ³)		
A2-1	n/a	22/04/2008	50
	NIU	8.8653	
A2-2	14/08/2007	22/04/2008	50
	2.1069	15.2510	
A2-3	14/08/2007	15/12/2008	50
	12.2363	7.1860	
A2-4	21/11/2007	18/12/2008	50
	8.7618	8.7237	
A2-5	21/11/2007	18/12/2008	50
	5.4714	5.7315	

The results demonstrate compliance with the IPPC Licence limits.

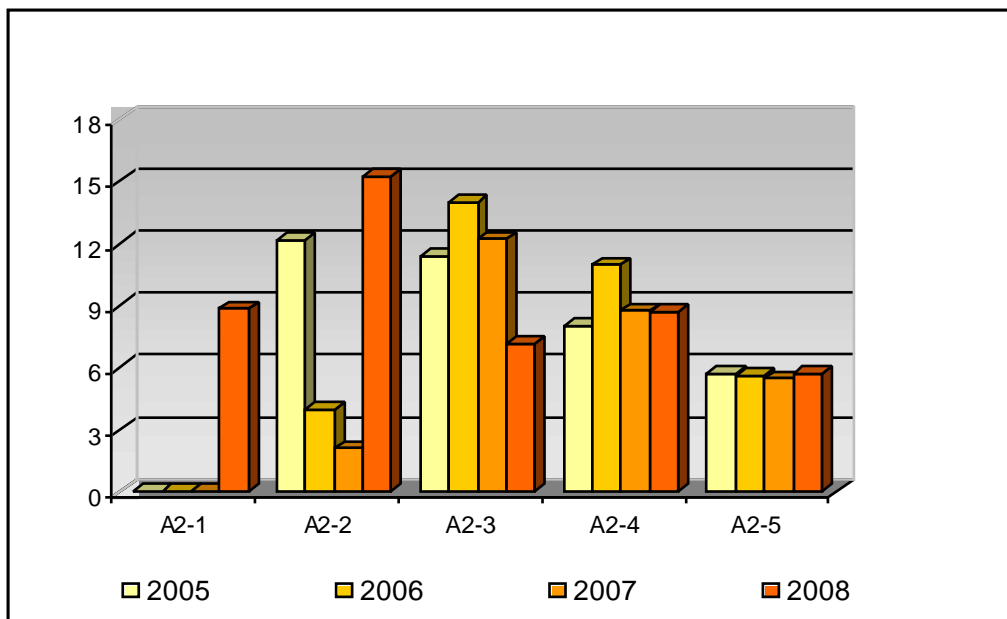


Figure 2 Particulate Emissions (mg/Nm³). ELV is set on 50mg/Nm³.



2.4 Waste Management

Waterford Carpets Ltd. maintains full details and records of all waste arising on site in accordance with Condition 7 of the IPPC Licence. This section of the Annual Environmental Report (AER) provides comprehensive information regarding these wastes.

A full record, which shall be open to inspection by authorised persons of the Agency at all times, shall be kept by the licensee on matters relating to the waste management operations and practices at this site.

The records shall as a minimum contain details of the following:

- The names of the agent and transporter of the waste.
- The name of the persons responsible for the ultimate disposal/recovery of the waste.
- The ultimate destination of the waste.
- The tonnage and EWC code for the waste materials listed in schedule 3(1) Hazardous Waste for Disposal/Recovery and schedule 3(2) Other Wastes for Disposal/Recovery sent off site for Disposal/Recovery.
- Details of any rejected consignments.
- The tonnage and EWC code for the waste materials listed in schedule 3(1) Hazardous Waste for Disposal/Recovery and schedule 3(2) Other Wastes for Disposal/Recovery recovered/disposed of on site.

A copy of this waste management record shall be submitted to the Agency as part of the AER for this site.

2.4.1 Hazardous Waste

The main source of hazardous waste generated on-site is waste PVC adhesive. Over the past number of years the amount of hazardous waste generated on site has been minimal.

A summary of the waste quantities generated at the Waterford Carpets site is included in Table 2.7 All hazardous wastes generated are stored in designated and segregated hazardous waste storage areas.

Indaver processes hazardous waste on behalf of Waterford Carpets Ltd.

2.4.2 Non-Hazardous Waste

The main non-hazardous wastes generated at Waterford Carpets Ltd. include, general refuse, canteen waste, waste pallets, cardboard, cardboard cores/tubes, carpet fibres and 2nd grade carpet.

Table 4 Summary Information on Waste

	2004	2005	2006	2007	2008	Note
Total quantity of waste (Tonnes)	207.63	201.06	207.03	225.95	265.4	
disposed of on-site	0	0	0	0	0	-
disposed of off-site	164.88	186.99	173.01	170.99	235.3	D1
recovered on-site	0.90	3.50	2.50	4.50	2.00*	R0
recovered off-site	41.85	10.56	31.52	50.46	28.1	R0, R4
Non-hazardous waste (Tonnes)	207.63	201.06	203.83	225.95	264.1	
disposed of on-site	0	0	0	0	0	-
disposed of off-site	164.88	186.99	169.81	170.99	234	D1
recovered on-site	0.90	3.50	2.50	4.50	2	R0
recovered off-site	41.85	10.56	31.52	50.46	28.1	R0, R4
Hazardous waste (Tonnes)	0	0	3.20	0	1.3**	R3
disposed of on-site	0	0	0	0	0	-
disposed of off-site	0	0	3.20	0	1.3*	R3
recovered on-site	0	0	0	0	0	
recovered off-site	0	0	0	0	0	

* Less amount of cardboard cores recovered on site in 2008 due to jute supplier shifting. Cores supplied were of bigger diameter and wall thickness.

** Seven barrels of waste PVC glue (1.3 t) were collected in January 2008, not 2007.

Table 5 Information on Waste Stream

European Waste Catalogue Code	Haz (Yes/No)	Description of Waste	Quantity (t/year)	Disposal/ Recovery Code	Location of Disposal/ Recovery	Name of Waste Disposal/ Recovery Contractor
Hazardous:						
13 02 06	Y	Utilities Waste Oils	0.1	-	Pending collection	-
20 01 21	Y	Fluorescent Tubes	<0.05	-	Pending collection	-
16 06	Y	Batteries	<0.05	-	Pending collection	-
04 02 09	Y	Waste PVC glue	1.3 ^a	R3	ATM, Netherlands	Indaver
Industrial:						
04 02 22	N	Carpet Trimmings	191.94	D1	KTK Landfill Kildare	Veolia
04 02 21	N	Carpet Fibres	20 ^b	D1	KTK Landfill Kildare	Veolia
04 02 22	N	2 nd Grade Carpet	12.029	R0	Chernobyl	Chernobyl Charity
Commercial:						
15 01 01	N	Cardboard Cores	4.04 ^c	R3	Smurfit Ireland Ltd	Veolia
15 01 01	N	Cardboard Cores	2.00	R0	Reused on site	Waterford Carpets
15 01 04	N	Metal Bands/Scrap	10.4	R4	Enniscoorthy	Molloy Metal Recycling Ltd.
15 01 03	N	Pallets	1.7 ^d	R3	Limerick	Veolia
15 01 02	N	Plastic Wrap	1.8 ^e	R3/D1	Limerick	Veolia
08 03 18	N	Toners/Ink cartridges	<0.01	-	Pending collection	-
20 03 01	N	Mixed Municipal Waste	20.22	D1	KTK Landfill Kildare	Veolia

^a C1 No: B198391, 540kg, 3 barrels, TFS: 311373/49, Disposal date: 22/08/2008; C1 No: B340913, 720kg, 4 barrels, TFS: 311087/49, Disposal date: 10/04/2008

^b 257 bags, approx. 80 kg each

^c 15 batches, approx 270kg each

^d 83 pallets, approx 20kg each

^e 4 bales, approx 450kg each



2.5 Energy Consumption

Table 6 Energy Consumption

Sources	2004	2005	2006	2007	2008
Electricity (KW)	2,107,540	2,037,330	2,020,439	2,048,879	2,201,228
Gas (m ³)	88,468	88,468	98,077	92,987	123,264

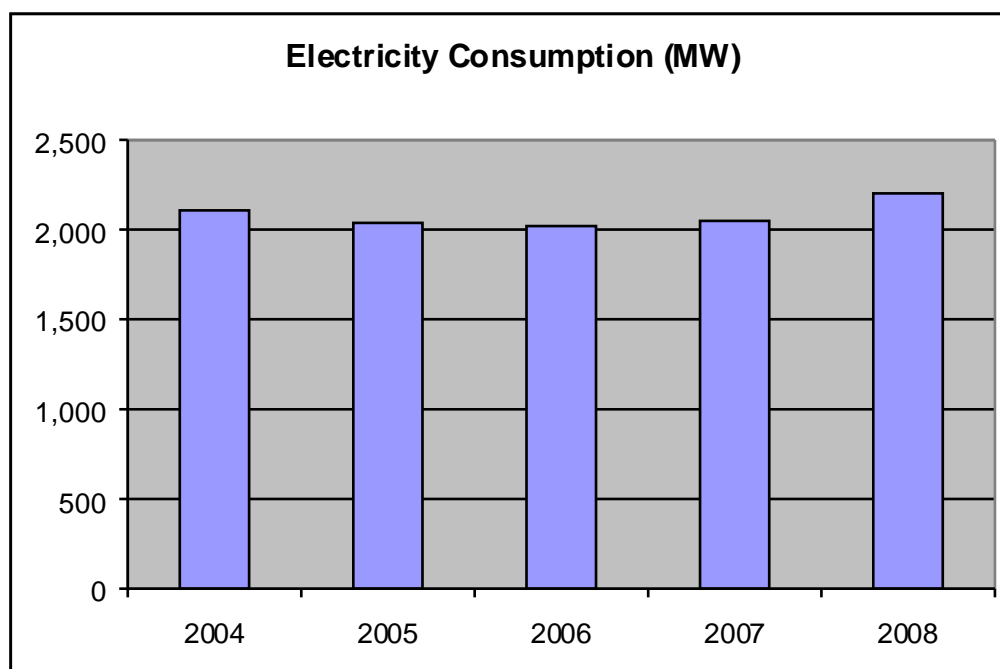


Figure 4 Electricity Consumption (MW)

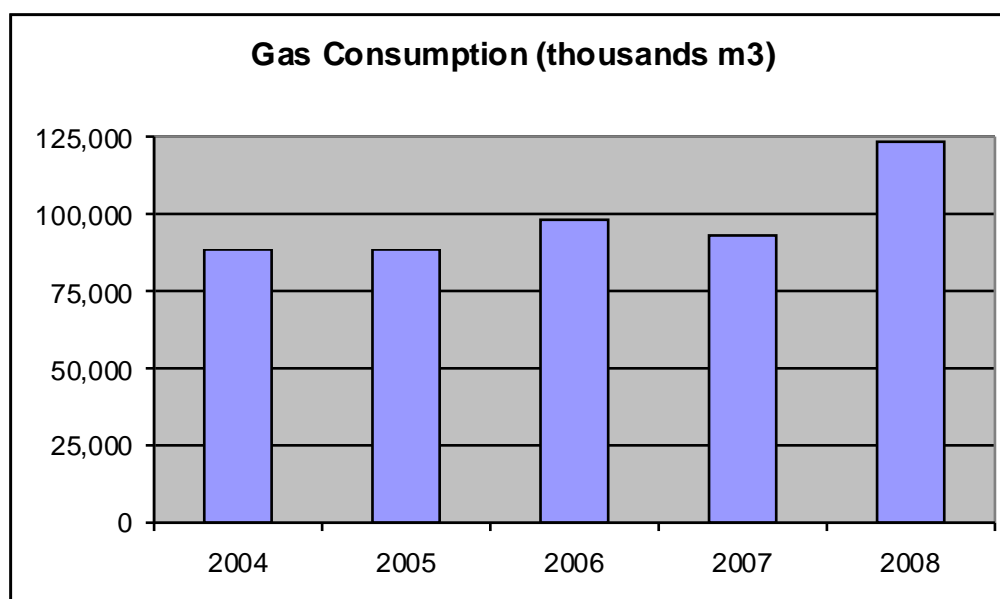


Figure 3 Gas Consumption (thousands m3)



2.6 Water Consumption

Table 7 Water Consumption

Water Consumption					
Municipal Supply	2004	2005	2006	2007	2008
gallons	300,000	289,000	353,000	367,000	314,000
m ³	1,363,827	1,313,820	1,604,770	1,668,415	1,427,472

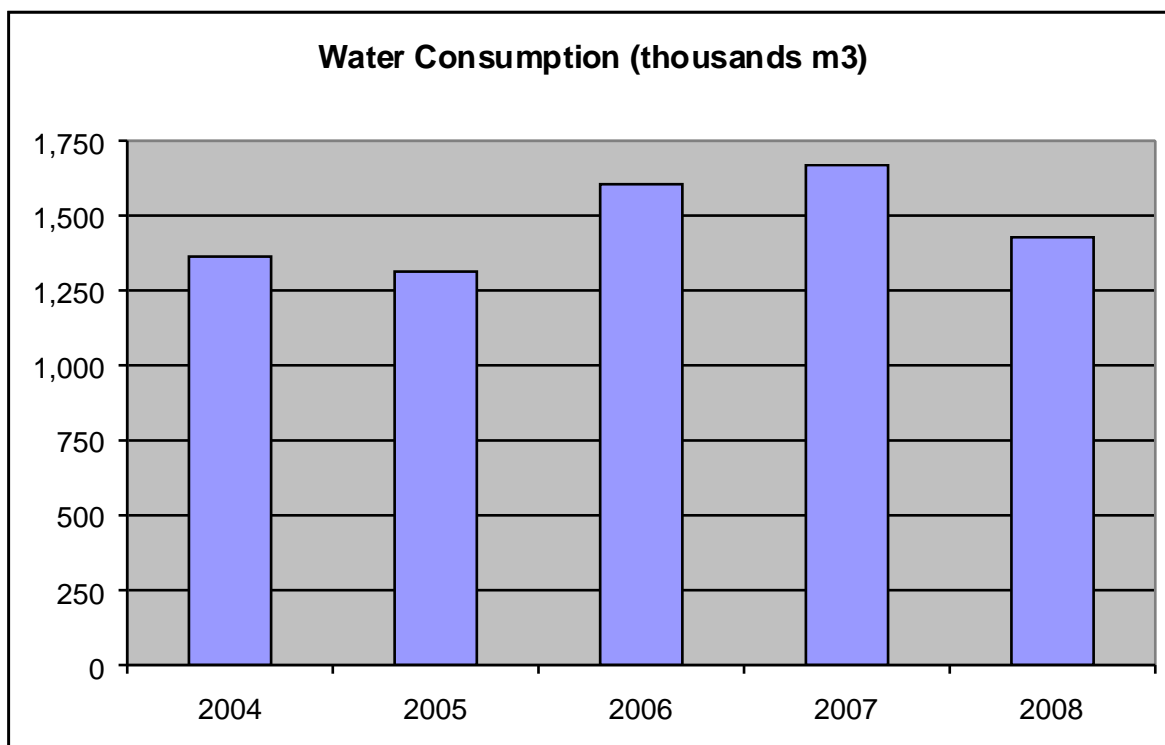


Figure 5 Water Consumption (thousands m3)



2.7 Environmental Incidents and Complaints

There were no environmental incidents recorded or reported during the 2008 period.

There were no environmental complaints received for the period January to
December 2008



2.8 Agency Monitoring and Enforcement

There one visit by the agency to Waterford Carpets Ltd. during 2008.

Inspection Reference Number: P0510-01/nc04mk

This visit took place on the 15th May 2008 and was an unannounced visit by Ms. Martina Kirwan of the EPA.

Waterford Carpets Ltd were found to be non compliant with three conditions of their IPPC licence.

1. Bunding and Bund Test Reports Condition 10.3.1

- Bund integrity testing has not been carried out since 2002.
- In the repairs area/shed, containers of "Jizer rinsable parts degreaser" were not on a bund.
- The bund under the waste glue contained glue and hair which was reducing the capacity of the bund.

Corrective Action:

- Visual inspection of the glue bunds under header and holding tanks was undertaken on 13th October 2008. Certificates may be found in attachment.
- Additional bund has been ordered and workshop personnel instructed to ensure all materials are kept on the bunds supplied.
- Waste glue mixed with hair covering bund with waste glue collection container on have been removed in order to ensure proper working conditions of the bund. These removed are being stored awaiting disposal.

2. Previous Audit Inspection Condition 2.6.1

- Training of staff has still not been completed. This is a repeat non-compliance, ref.sm05pmd report of site inspection of 13/09/07.

Corrective Action:

- As part of Waterford Carpets Ltd. Plan to introduce ISO 14001 a training matrix has been developed by end of September 2008. Training took place on 18th November 2008.

3. Annual Environmental Report Condition 2.8.2

- There was no AER on site for 2007.
- The 2006 and 2007 AERs have not been submitted to the Agency.

Corrective Action:

- Ensured the 2006 AER was submitted to the Agency in the 2nd quarter of 2007. Copies may be resubmitted if required.
- The 2007 AER was submitted to the Agency by end June 2008.



There were five inspection observations also noted which did not constitute non-compliances but should be addressed.

1. Waste Management

- There were plastic straps and waste hair in the scrap metal skip.
- There were metal containers in the back of the yard behind the facility some of which appeared to be obsolete/scrap.
- There was scrap metal, a "car" battery and insulation in the bund of the decommissioned heating oil tank.

Corrective Action:

- Scrap metal skip has been cleaned of all contamination. Dedicated separate container for non-metal waste has been placed in fibre mixing area. Staff has been instructed.
- Waste metal containers in the back of the yard have been sorted and disposed by end July 2008. All area is clean now.
- Bund of the oil tank has been cleaned out by end of June 2008. Car battery has been removed and placed in the dedicated collection area at the Civic Amenity Site, Kilbarry.

2. Air Emissions

- The curing oven at air emission point A2-1 has been restarted in 2008 in order to trial a new product line. It is advised that once the curing oven was back in use that air monitoring at A2-1 was to recommence.

Corrective Action:

- Emission tests have been carried out on this machine in April 2008. Results were well within the limits.

3. Emergency Response Procedure

- The emergency response procedure does not include a procedure to control spills and firewater. This is a repeat observation.

Corrective Action:

- An investigation is underway with external consultants to determine the level of Fire Water retention required.

4. Waste Records

- Only C1 forms were available for oil-based waste glue, this was disposed of outside of the country.

Corrective Action:

- TFS documentation for mentioned shipments is now available on site. (C1 No: B198391, 540kg, 3 barrels, TFS: 311373/49, Disposal date: 22/08/2008; C1 No: B340913, 720kg, 4 barrels, TFS: 311087/49, Disposal date: 10/04/2008)

5. Tank and Pipeline Assessment

- Most recent tank and pipeline assessment has not been forwarded to the Agency.

Corrective Action:

- A copy of the assessment was sent to the agency on 17th June 2008. Tank and Pipeline Assessment for 3rd and 4th quarter 2008 to be found in attachment.



3.0 ENVIRONMENTAL MANAGEMENT

Waterford Carpets Ltd. operate and maintain a basic Environmental Management System. It was decided to investigate the requirements for certification to the ISO 14001 Environmental Management System (EMS) standard during 2007-2008. Therefore the company has documented and implemented an EMS and complies with the requirements of Condition 2.2 of the IPPC Licence (Reg. P0510-01).

A schedule of Environmental Objectives and Targets has been developed by Waterford Carpets in accordance with Condition 2.2.2 of the IPPC Licence. These have been included in the Environmental Management Programme, which designates responsibility for the various objectives and targets. The EMP also outlines the means by which the Objectives and Targets may be achieved and the timescales involved in accordance with Condition 2.2.2.2 of the IPPC Licence. The EMP is revised and updated as required.

Programmes and procedures are in place to ensure effective management and control.



3.1 Environmental Objectives and Targets

Objective

Objective Number	01
Objective Description	Implement Environmental Management System
Aspect	Overall
Environmental Policy Aims	Continuous Improvement programme

Targets

Target No.	Targets	Proposed Deadline
EO.1	Achieve Certification to ISO 14001	1 st February 2009

Environmental Management Plan

EMP Reference	Responsibility	People Resources Needed	Financial Resources Needed
EMP - 10	Noel Cunningham / External Consultant / Bart Zdrojow	Yes	Yes



Objective

Objective Number	02
Objective Description	Training
Significant Impact	N/a
Environmental Policy Aims	Adequate Training for Employees

Targets

Target No.	Targets	Proposed Deadline
EO.01	Develop environmental Training Programme for all Employees	31 st December 2008
EO.02	Develop environmental communications programme and communicate to all employees	31 st December 2008
EO.03	Conduct training on Emergency Response with Relevant employees	31 st October 2009

Environmental Management Plan

EMP Reference	Responsibility	People Resources Needed	Financial Resources Needed
EMP 11	Noel Cunningham Bartosz Zdrojow	Yes	Yes



Objective

Objective Number	03
Objective Description	Energy
Significant Impact	Energy Usage
Environmental Policy Aims	Energy Conservation

Targets

Target No.	Targets	Proposed Deadline
EO.01	Reduce energy usage by 0.5% of 2008 Figures	31 st December 2009

Environmental Management Plan

EMP Reference	Responsibility	People Resources Needed	Financial Resources Needed
EMP 012	Noel Cunningham Billy Lyons	Yes	Yes



Objective

Objective Number	04
Objective Description	Reduce Non-Hazardous Waste
Significant Impact	Non-Hazardous Waste
Environmental Policy Aims	Waste Avoidance and Waste Reduction

Targets

Target No.	Targets	Proposed Deadline
EO.01	Reduce Non-Hazardous Waste generation and disposal by 1% on 2008 figures	31 st December 2009

Environmental Management Plan

EMP Reference	Responsibility	People Resources Needed	Financial Resources Needed
EMP 014	Bartosz Zdrojowy	Yes	Yes

Objective: Training

Responsibility: Noel Cunningham

Coordinator: Bartosz Zdrojowy

Significant Impact: Training

Target: Develop environmental communications programme and communicate to all employees
Conduct chemical training with all relevant employees
Conduct spill training with ERU team

Policy Aim:

02. Training		Responsibility	2008				2009				Comments
			Q1	Q2	Q3	Q4	Q1	Q2	Q3	Q4	
1.	Develop environmental Training Programme for all Employees	Bart Zdrojowy	Red	Red	Red	Red					Complete
					Green	Green					
2.	Develop environmental communications programme and communicate to all employees	Bart Zdrojowy			Red	Red					Complete
						Green	Green				
3.	Conduct training on Emergency Response with Relevant employees	External Trainer				Red					Pending
						Green	Green				

Objective: Energy

Responsibility: Noel Cunningham

Coordinator: Billy Lyons

Significant Impact: Energy Conservation

Target: Reduce energy usage by 0.5% on 2008 figures

Policy Aim: Energy Reduction

03. Track & Reduce energy by 0.5% on 2006 figures		Responsibility	2008				2009				Comments
			Q1	Q2	Q3	Q4	Q1	Q2	Q3	Q4	
1.	Review Energy Audit and implement recommendations where necessary	Noel Cunningham	Red	Red	Red						
						Green	Green				
2.	Monitor Energy usage and communicate to all employees	Noel Cunningham / Bart Zdrojowy	Red	Red	Red	Red	Red	Red	Red		
						Green	Green				

4.0 LICENCE SPECIFIC REPORTS

4.1 Noise Survey

4.1.1 Boundary Noise Measurements

Table 8 Boundary Noise Monitoring Results

Boundary Noise Day-time Results							
Location No.	Location description	Measurement Period (Min.)	Sampling Time	L _{eq} dB(A)	L ₁₀ dB(A)	L ₉₀ dB(A)	Comments
1	South West Corner Across from workshop	15	8:48	57.6	59.3	54.4	This location is adjacent to the main road on the industrial estate. Traffic main noise source
2	West Face – Across from glue mixing	15	10:54	54.1	56.3	49.5	This location is adjacent to the main road. Traffic heavy and clearly audible – main noise source
3	North West Corner	15	9:06	53.6	56.4	47.7	Traffic noise from the main road clearly audible
4	North Face	15	9:24	48.7	51.3	45.0	No audible noise from Waterford Carpets facility.
5	North East Corner	15	9:43	51.7	54.0	47.7	The predominant source of noise was traffic on the Industrial Estate and on Lismore Park Road.
6	East Face – across from Loading Bay	15	10:00	50.2	51.2	47.0	The predominant source of noise was traffic on the Industrial Estate.
7	South east Corner – Main Entrance	15	10:19	50.5	52.5	47.4	No audible noise from Waterford Carpets facility.
8	South Face	15	10:36	61.9	63.3	59.6	The predominant source of noise was traffic on the Industrial Estate.

Results marked red exceeds the specified day-time limit of 55 dB(A)

4.1.2 Noise sensitive Locations

Table 9 Noise Sensitive Locations Day-time Monitoring Results

Noise Sensitive Location Day-time Results							
Location No.	Location description	Measurement Period (Min.)	Sampling Time	L _{eq} dB(A)	L ₁₀ dB(A)	L ₉₀ dB(A)	Comments
9	No. 10 Lismore Park	15	12:15	56.0	56.4	47.3	The predominant source of noise was traffic on Lismore Park Road. No audible noise from Waterford Carpets facility.
10	No. 95 Lismore Park	15	11:55	54.3	54.6	50.8	The predominant source of noise was traffic on Lismore Park Road. No audible noise from Waterford Carpets facility.
11	No. 112 Lismore Park	15	11:16	54.3	56.1	48.9	The predominant source of noise was traffic on Lismore Park Road. No audible noise from Waterford Carpets facility.
12	No. 123 Lismore Park	15	11:35	57.8	57.6	51.7	The predominant source of noise was traffic on Lismore Park Road. No audible noise from Waterford Carpets facility.

Results marked red exceeds the specified day-time limit of 55 dB(A)

Table 10 Noise Sensitive Locations Night-time Monitoring Results

Noise Sensitive Location Night-time Results							
Location No.	Location description	Measurement Period (Min.)	Sampling Time	L _{eq} dB(A)	L ₁₀ dB(A)	L ₉₀ dB(A)	Comments
9	No. 10 Lismore Park	15	23:55	43.5	48.3	40.1	No audible noise from factory. Three vehicles passed close to the sound level meter during the monitoring period.
10	No. 95 Lismore Park	15	00:15	42.5	45.2	38.6	No audible noise from factory. Two vehicles passed close to the sound level meter during the monitoring period.
11	No. 112 Lismore Park	15	23:16	41.9	46.3	38.6	No audible noise from factory. Two vehicles passed close to the sound level meter during the monitoring period.
12	No. 123 Lismore Park	15	23:36	42.6	44.9	39.3	No audible noise from factory during night-time measurement

Results marked red exceed the specified night-time limit of 45 dB(A)

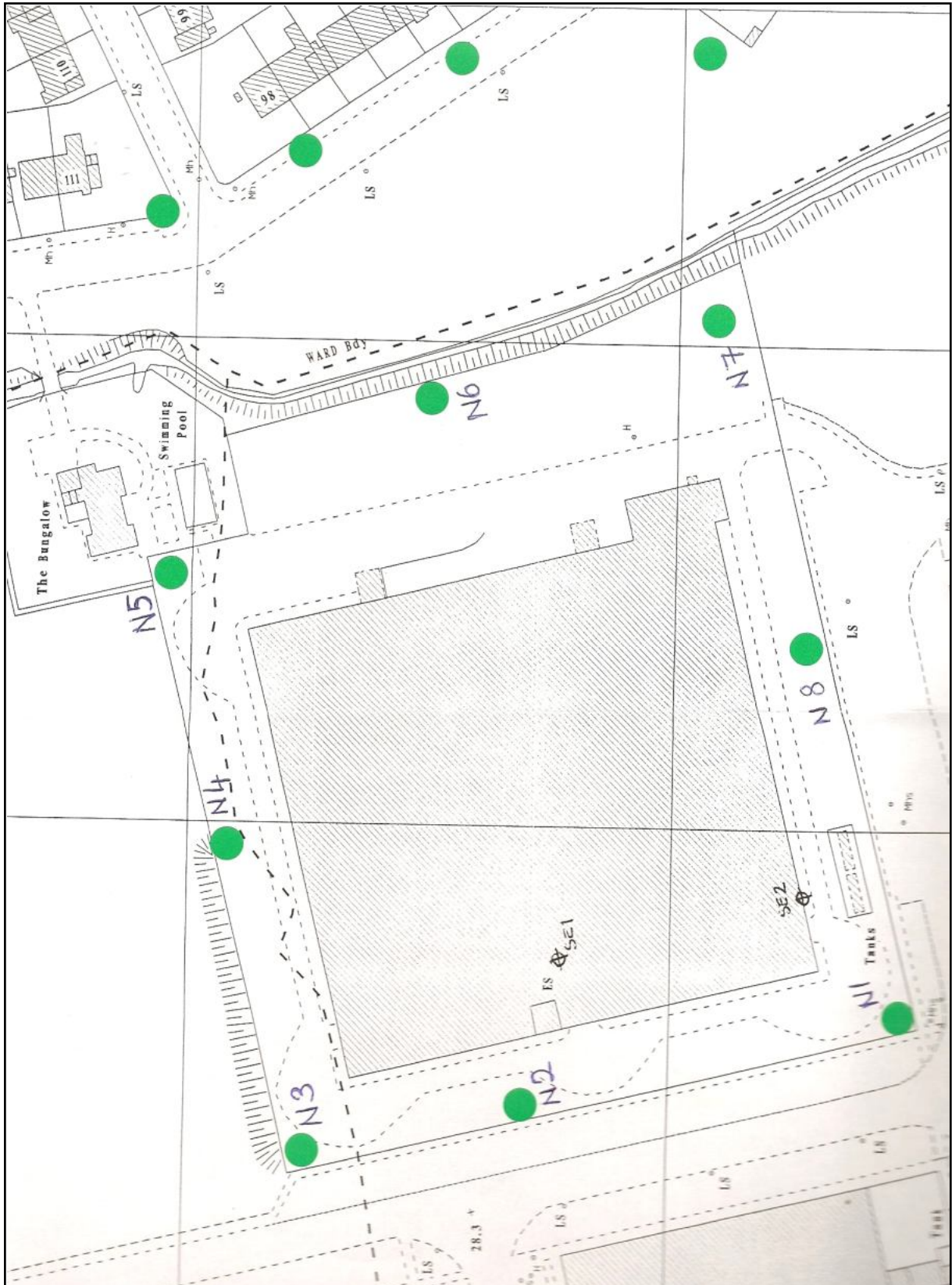


Figure 6 Location of noise monitoring points



5.0 LIST OF APPENDICES

5.1 Pipework Inspection

5.2 Surface Water Checklist

5.3 Bund Testing Report

5.4 AER / PRTR Reporting Workbook

WEEKLY PIPEWORK INSPECTION

CHECK PIPES AND FLANGES FOR GLUE LEAKS.

DATE	INITIALS	DATE	INITIALS
11.2.08	BL.	18.08.08	BZ
18.2.08	BL.	25.08.08	BZ
25.2.08	B.	1.09.08	BZ
3.3.08	B.	9.09.08	BZ
10.3.08	B.	15.09.08	BZ
18.3.08	B.	22.09.08	BZ
25.3.08	B.		
31.3.08	B.		
7.4.08	BZ	LOG FORMAT CHANGED	
14.4.08	B.		BZ 26/04/2008
21.4.08	B.		
28.4.08	B.		
6.5.08	B.		
12.5.08	B.		
19.5.08	B.		
26.5.08	B.		
3.6.08	B.		
9.6.08	B.		
16.6.08	B.		
23.06.08	BZ		
30.06.08	BZ		
7.07.08	BZ		
14.07.08	BZ		
21.07.08	BZ		
28.07.08	BZ		
5.08.08	BZ		
11.08.08	BZ		

IPPC Licence (P-510-01): Condition 10

10.3 Facilities for the Protection of Groundwater and Surface Water.

- 10.3.5 The licensee shall undertake a programme of testing and inspection of underground tanks and pipelines to ensure that all underground effluent and foul sewer pipes are tested at least once every three years. A report on such tests shall be included in the AER.
- 10.3.6 An inspection for leaks on all flanges and valves on over-ground pipes used to transport materials other than water shall be carried out weekly. A log of such inspections shall be maintained.
- 10.3.7 All flanges and valves on over-ground pipes used to transport materials other than uncontaminated water, where no permanent provision for containment of leaks is provided, shall be subject to weekly visual inspection or otherwise monitored for leaks to the satisfaction of the Agency. All such inspections shall be recorded in a log which shall be available for inspection by Agency.

Date checked	Initials	Date checked	Initials
1/10/2008	B2	2/02/09	B2
6/10/2008	B2	9/02/09	B2
13/10/2008	B2	16/02/09	B2
20/10/2008	B2	24/02/09	B2
28/10/2008	B2	2/03/09	B2
29/10/2008	B2	18/03/09	B2
3/11/2008	B2	24/03/09	B2
10/11/2008	B2	30/03/09	B2
17/11/08	B2	6/04/09	B2
24/11/08	B2	14/04/09	B2
1/12/08	B2	15/04/09	B2
8/12/08	B2	20/04/09	B2
15/12/08	B2	27/04/09	B2
5/01/2009	B2		
12/01/2009	B2		
19/01/2009	B2		
26/01/2009	B2		

— SURFACE WATER CHECK LIST —

DATE CHECKED	DATE CHECKED	DATE CHECKED
24/10/07	26/11/07	4/1/08
25/10/07	27/11/07	7/1/08
26/10/07	28/11/07	8/1/08
30/10/07	29/11/07	9/1/08
31/10/07	30/11/07	10/1/08
1/11/07	3/12/07	11/1/08
2/11/07	4/12/07	14/1/08
5/11/07	5/12/07	15/1/08
6/11/07	6/12/07	16/1/08
7/11/07	7/12/07	17/1/08
8/11/07	10/12/07	18/1/08
9/11/07	11/12/07	22/1/08
12/11/07	12/12/07	23/1/08
13/11/07	13/12/07	24/1/08
14/11/07	14/12/07	25/1/08
15/11/07	17/12/07	28/1/08
16/11/07	18/12/07	29/1/08
19/11/07	19/12/07	30/1/08
20/11/07	20/12/07	31/1/08
21/11/07	21/12/07	1/2/08
22/11/07	2/1/08	4/2/08
23/11/07	3/1/08	5/2/08

— SURFACE WATER CHECK LIST —

DATE CHECKED	DATE CHECKED	DATE CHECKED
6/2/08	7/3/08	11/4/08
7/2/08	10/3/08	14/4/08
8/2/08	11/3/08	15/4/08
11/2/08	12/3/08	16/4/08
12/2/08	13/3/08	17/4/08
13/2/08	14/3/08	18/4/08
14/2/08	18/3/08	21/4/08
15/2/08	19/3/08	22/4/08
18/2/08	20/3/08	23/4/08
19/2/08	25/3/08	24/4/08
20/2/08	26/3/08	25/4/08
21/2/08	27/3/08	28/4/08
22/2/08	28/3/08	29/4/08
25/2/08	31/3/08	30/4/08
26/2/08	1/4/08	1/5/08
27/2/08	2/4/08	2/5/08
28/2/08	3/4/08	6/5/08
29/2/08	4/4/08	7/5/08
3/3/08	7/4/08	8/5/08
4/3/08	8/4/08	9/5/08
5/3/08	9/4/08	12/5/08
6/3/08	10/4/08	13/5/08

— SURFACE WATER CHECK LIST —

DATE CHECKED	DATE CHECKED	DATE CHECKED
14/5/08	16/6/08	16/07/08
15/5/08	17/6/08	17/07/08
16/5/08	18/06/08	18/07/08
19/5/08	19/06/08	21/07/08
20/5/08	20/06/08	22/07/08
21/5/08	23/06/08	23/07/08
22/5/08	24/06/08	24/07/08
23/5/08	25/06/08	25/07/08
26/5/08	26/06/08	28/07/08
27/5/08	27/06/08	29/07/08
28/5/08	30/06/08	30/07/08
29/5/08	1/07/08	31/07/08
30/5/08	2/07/08	1/08/08
3/6/08	5/07/08	5/08/08
4/6/08	4/07/08	6/08/08
5/6/08	7/07/08	7/08/08
6/6/08	8/07/08	8/08/08
9/6/08	9/07/08	11/08/08
10/6/08	10/07/08	12/08/08
11/6/08	11/07/08	13/08/08
12/6/08	12/07/08	14/08/08
13/6/08	15/07/08	15/08/08

— SURFACE WATER CHECK LIST —

DATE CHECKED	DATE CHECKED	DATE CHECKED
18/08/2008	19/09/2008	
19/08/2008	22/09/2008	
20/08/2008	23/09/2008	
21/08/2008	24/09/2008	
22/08/2008	25/09/2008	
25/08/2008	26/09/2008	
26/08/2008	LOG FORMAT CHANGED 26/09/2008 12	
28/08/2008		
29/08/2008		
1/09/2008		
2/09/2008		
3/09/2008		
4/09/2008		
5/09/2008		
9/09/2008		
10/09/2008		
11/09/2008		
12/09/2008		
15/09/2008		
16/09/2008		
17/09/2008		
18/09/2008		

ISO-14001
Controlled
Document

ISO-14001 Elements: 4.3.2
IPPC Licence (P-510-01): Condition 10
Surface Water Checklist

Revision
Level:
Release

IPPC Licence (P-510-01): Condition 10

10.1 Surface water

- 10.1.1 A visual examination of the surface water discharge shall be carried out daily. A log of such inspections shall be maintained.
- 10.1.2 The licensee shall monitor surface water discharges in accordance with Schedule 4(i) Surface Water Discharge Monitoring of this licence. A report on the results of this monitoring shall be submitted to the Agency annually as part of the AER.
- 10.1.3 In the event that any analyses or observations made on the quality or appearance of surface water runoff should indicate that contamination has taken place, the licensee shall
- (i) carry out an immediate investigation to identify and isolate the source of the contamination,
 - (ii) put in place measures to prevent further contamination and to minimise the effects of any contamination on the environment,
 - (iii) and notify the Agency as soon as is practicable.

Date checked	Date checked	Date checked
29/9/08	23/10/08	19/10/08
30/9/08	24/10/08	20/10/08
1/10/2008	28/10/08	21/10/08
2/10/2008	29/10/08	24/11/08
3/10/2008	30/10/08	25/11/08
6/10/2008	31/10/08	26/11/08
7/10/2008	3/11/08	27/11/08
8/10/2008	4/11/08	28/11/08
9/10/2008	5/11/08	1/12/08
10/10/2008	6/11/08	2/12/08
13/10/2008	7/11/08	3/12/08
14/10/2008	10/11/08	4/12/08
15/10/2008	11/11/08	5/12/08
16/10/2008	12/11/08	8/12/08
17/10/2008	13/11/08	9/12/08
20/10/2008	14/11/08	10/12/08
21/10/2008	17/11/08	11/12/08
22/10/2008	18/11/08	12/12/08

IPPC Licence (P-510-01): Condition 10

10.1 Surface water

- 10.1.1 A visual examination of the surface water discharge shall be carried out daily. A log of such inspections shall be maintained.
- 10.1.2 The licensee shall monitor surface water discharges in accordance with Schedule 4(i) Surface Water Discharge Monitoring of this licence. A report on the results of this monitoring shall be submitted to the Agency annually as part of the AER.
- 10.1.3 In the event that any analyses or observations made on the quality or appearance of surface water runoff should indicate that contamination has taken place, the licensee shall
 - (i) carry out an immediate investigation to identify and isolate the source of the contamination,
 - (ii) put in place measures to prevent further contamination and to minimise the effects of any contamination on the environment,
 - (iii) and notify the Agency as soon as is practicable.



Date checked	Date checked	Date checked
15/12/2008	25/01/09	18/02/09
16/12/2008	26/01/09	19/02/09
17/12/2008	27/01/09	23/02/09
18/12/2008	28/01/09	24/02/09
5/01/2009	29/01/09	25/02/09
6/01/2009	30/01/09	26/02/09
7/01/2009	2/02/09	27/02/09
8/01/2009	3/02/09	2/03/09
9/01/2009	4/02/09	3/03/09
12/01/2009	5/02/09	4/03/09
13/01/2009	6/02/09	5/03/09
14/01/2009	9/02/09	6/03/09
15/01/2009	10/02/09	18/03/09
16/01/2009	11/02/09	19/03/09
19/01/2009	12/02/09	20/03/09
20/01/2009	13/02/09	24/03/09
21/01/2009	16/02/09	25/03/09
22/01/2009	17/02/09	26/03/09



IPPC Licence (P-510-01): Condition 10

10.1 Surface water

- 10.1.1 A visual examination of the surface water discharge shall be carried out daily. A log of such inspections shall be maintained.
- 10.1.2 The licensee shall monitor surface water discharges in accordance with Schedule 4(i) Surface Water Discharge Monitoring of this licence. A report on the results of this monitoring shall be submitted to the Agency annually as part of the AER.
- 10.1.3 In the event that any analyses or observations made on the quality or appearance of surface water runoff should indicate that contamination has taken place, the licensee shall
 - (i) carry out an immediate investigation to identify and isolate the source of the contamination,
 - (ii) put in place measures to prevent further contamination and to minimise the effects of any contamination on the environment,
 - (iii) and notify the Agency as soon as is practicable.



Date checked	Date checked	Date checked
27/03/09	24/04/09	
30/03/09	27/04/09	
31/03/09		
1/04/09		
2/04/09		
3/04/09		
6/04/09		
7/04/09		
8/04/09		
9/04/09		
14/04/09		
15/04/09		
16/04/09		
17/04/09		
20/04/09		
21/04/09		
27/04/09		
23/04/09		



Frank Fox & Associates

Civil & Structural Consulting Engineers

7 Bank Place Waterford Ireland tel.: 353-51-872799 fax: 353-51-878626 Email info@ffaeng.com

31 October 2008

Attention of:

Noel Cunningham
Waterford Carpets
Industrial Estate
Cork Road
Waterford

Re: Waterford Carpets, Header Tank. - 205065

Dear Noel,

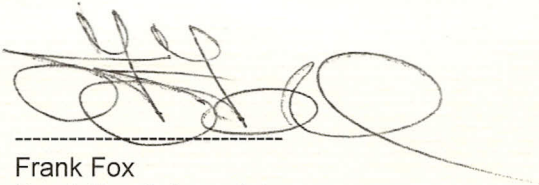
We confirm that a visual inspection of the Glue Bund (Reservoir) was undertaken on 13th October 2008.

The bunds are of robust construction. The wall and slab enclosure is sound and there is no evidence of any seepage.

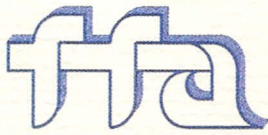
We confirm that the bunding is suitable for it's intended use and has been designed as a liquid retaining structure.

Should you have any queries relating to this correspondence please do not hesitate to contact us.

Yours sincerely



Frank Fox
Frank Fox & Associates



Frank Fox & Associates

Civil & Structural Consulting Engineers

7 Bank Place Waterford Ireland tel.: 353-51-872799 fax: 353-51-878626 Email info@ffaeng.com

31 October 2008

Attention of:

Noel Cunningham
Waterford Carpets
Industrial Estate
Cork Road
Waterford

Re: Waterford Carpets, Holding Tank. - 205065

Dear Noel,

We confirm that a visual inspection of the Glue Bund (Reservoir) was undertaken on 13th October 2008.

The bunds are of robust construction. The wall and slab enclosure is sound and there is no evidence of any seepage.

We confirm that the bunding is suitable for its intended use and has been designed as a liquid retaining structure.

Should you have any queries relating to this correspondence please do not hesitate to contact us.

Yours sincerely

Frank Fox
Frank Fox & Associates

AER Returns Worksheet

Version 1.1.02

REFERENCE YEAR	2008
-----------------------	------

1. FACILITY IDENTIFICATION

Parent Company Name	Waterford Carpets Limited
Facility Name	Waterford Carpets Limited
PRTR Identification Number	P0510
Licence Number	P0510-01

Waste or IPPC Classes of Activity

No.	class_name

Address 1	Unit 201
Address 2	IDA Industrial Park
Address 3	Cork Road
Address 4	Waterford
Country	Ireland
Coordinates of Location	25851110
River Basin District	
NACE Code	1393
Main Economic Activity	Manufacture of carpets and rugs
AER Returns Contact Name	Noel Cunningham
AER Returns Contact Email Address	ncunningham@tretford.ie
AER Returns Contact Position	Managing Director
AER Returns Contact Telephone Number	051 - 375941
AER Returns Contact Mobile Phone Number	
AER Returns Contact Fax Number	051 - 379607
Production Volume	1700.0
Production Volume Units	tonnes/year
Number of Installations	1
Number of Operating Hours in Year	0
Number of Employees	40
User Feedback/Comments	No PRTR Annex I activity carried out, no threshold values specified in Annex II are exceeded. E-PRTR reporting not applicable (Article 5 of PRTR regulation. Reporting by Operators)
Web Address	www.tretford.ie

2. PRTR CLASS ACTIVITIES

Activity Number	Activity Name

3. SOLVENTS REGULATIONS (S.I. No. 543 of 2002)

Is it applicable?	No
Have you been granted an exemption ?	
If applicable which activity class applies (as per Schedule 2 of the regulations) ?	
Is the reduction scheme compliance route being used ?	

4.1 RELEASES TO AIR

SECTION A : SECTOR SPECIFIC PRTR POLLUTANTS

RELEASES TO AIR									
POLLUTANT		METHOD			QUANTITY				
No. Annex II	Name	M/C/E	Method Code	Designation or Description	Emission Point 1	T (Total) KG/Year	A (Accidental) KG/Year	F (Fugitive) KG/Year	
						0.0	0.0	0.0	0.0

* Select a row by double-clicking on the Pollutant Name (Column B) then click the delete button

SECTION B : REMAINING PRTR POLLUTANTS

RELEASES TO AIR												
POLLUTANT		METHOD			QUANTITY							
No. Annex II	Name	M/C/E	Method Code	Designation or Description	Emission Point 1	Emission Point 2	Emission Point 3	Emission Point 4	Emission Point 5	T (Total) KG/Year	A (Accidental) KG/Year	F (Fugitive) KG/Year
86	Particulate matter (PM10)	M	EN 13284-1: 2002	Determination of Low Range Mass Concentration	1171.214180276	1538.309562144	1087.752350928	842.212901891	755.418623652	5394.907618891	0.0	0.0

* Select a row by double-clicking on the Pollutant Name (Column B) then click the delete button

SECTION C : REMAINING POLLUTANT EMISSIONS (As required in your Licence)

RELEASES TO AIR									
POLLUTANT		METHOD			QUANTITY				
Pollutant No.	Name	M/C/E	Method Code	Designation or Description	Emission Point 1	T (Total) KG/Year	A (Accidental) KG/Year	F (Fugitive) KG/Year	
						0.0	0.0	0.0	0.0

* Select a row by double-clicking on the Pollutant Name (Column B) then click the delete button

Additional Data Requested from Landfill operators

For the purposes of the National Inventory on Greenhouse Gases, landfill operators are requested to provide summary data on landfill gas (Methane) flared or utilised on their facilities to accompany the figures for total methane generated. Operators should only report their Net methane (CH4) emission to the environment under T(total) KG/yr for Section A: Sector specific PRTR pollutants above. Please complete the table below:

Landfill: Please enter summary data on the quantities of methane flared and / or utilised	Waterford Carpets Limited				Facility Total Capacity m3 per hour
	T (Total) kg/Year	M/C/E	Method Code	Designation or Description	
Total estimated methane generation (as per site model)	0.0				N/A
Methane flared	0.0				0.0 (Total Flaring Capacity)
Methane utilised in engine/s	0.0				0.0 (Total Utilising Capacity)
Net methane emission (as reported in Section A above)	0.0				N/A

4.2 RELEASES TO WATERS

[PRTR# : P0510 | Facility Name : Waterford Carpets Limited | Filename : P0510_2008.xls | Return Year : 2008]

07/05/2009 11:19

0

SECTION A : SECTOR SPECIFIC PRTR POLLUTANTS

Data on ambient monitoring of storm/surface water or groundwater, conducted as part of your licence requirements, should NOT be submitted under AER / PRTR Reporting as this only concerns Releases from your facility

RELEASES TO WATERS								
POLLUTANT		Method Used			QUANTITY			
No. Annex II	Name	M/C/E	Method Code	Designation or Description	Emission Point 1	T (Total) KG/Year	A (Accidental) KG/Year	F (Fugitive) KG/Year
						0.0	0.0	0.0

* Select a row by double-clicking on the Pollutant Name (Column B) then click the delete button

SECTION B : REMAINING PRTR POLLUTANTS

RELEASES TO WATERS								
POLLUTANT		Method Used			QUANTITY			
No. Annex II	Name	M/C/E	Method Code	Designation or Description	Emission Point 1	T (Total) KG/Year	A (Accidental) KG/Year	F (Fugitive) KG/Year
						0.0	0.0	0.0

* Select a row by double-clicking on the Pollutant Name (Column B) then click the delete button

SECTION C : REMAINING POLLUTANT EMISSIONS (as required in your Licence)

RELEASES TO WATERS								
POLLUTANT		Method Used			QUANTITY			
Pollutant No.	Name	M/C/E	Method Code	Designation or Description	Emission Point 1	T (Total) KG/Year	A (Accidental) KG/Year	F (Fugitive) KG/Year
						0.0	0.0	0.0

* Select a row by double-clicking on the Pollutant Name (Column B) then click the delete button

4.3 RELEASES TO WASTEWATER OR SEWER

SECTION A : PRTR POLLUTANTS

OFFSITE TRANSFER OF POLLUTANTS DESTINED FOR WASTE-WATER TREATMENT OR SEWER									
POLLUTANT		METHOD			QUANTITY				
No. Annex II	Name	M/C/E	Method Code	Designation or Description	Emission Point 1	T (Total) KG/Year	A (Accidental) KG/Year	F (Fugitive) KG/Year	
						0.0	0.0	0.0	0.0

* Select a row by double-clicking on the Pollutant Name (Column B) then click the delete button

SECTION B : REMAINING POLLUTANT EMISSIONS (as required in your Licence)

OFFSITE TRANSFER OF POLLUTANTS DESTINED FOR WASTE-WATER TREATMENT OR SEWER									
POLLUTANT		METHOD			QUANTITY				
Pollutant No.	Name	M/C/E	Method Code	Designation or Description	Emission Point 1	T (Total) KG/Year	A (Accidental) KG/Year	F (Fugitive) KG/Year	
303	BOD	M	oth	lab analysis (-LOD)		0.0	0.0	0.0	0.0
306	COD	M	oth	lab analysis (-LOD)		0.0	0.0	0.0	0.0
240	Suspended Solids	M	oth	lab analysis		0.146	0.146	0.0	0.0

* Select a row by double-clicking on the Pollutant Name (Column B) then click the delete button

4.4 RELEASES TO LAND

SECTION A : PRTR POLLUTANTS

RELEASES TO LAND							
POLLUTANT		METHOD			QUANTITY		
No. Annex II	Name	M/C/E	Method Used		Emission Point 1	T (Total) KG/Year	A (Accidental) KG/Year
			Method Code	Designation or Description			
					0.0	0.0	0.0

* Select a row by double-clicking on the Pollutant Name (Column B) then click the delete button

SECTION B : REMAINING POLLUTANT EMISSIONS (as required in your Licence)

RELEASES TO LAND							
POLLUTANT		METHOD			QUANTITY		
Pollutant No.	Name	M/C/E	Method Used		Emission Point 1	T (Total) KG/Year	A (Accidental) KG/Year
			Method Code	Designation or Description			
					0.0	0.0	0.0

* Select a row by double-clicking on the Pollutant Name (Column B) then click the delete button

5. ONSITE TREATMENT & OFFSITE TRANSFERS OF WASTE

| PRTR#: P0510 | Facility Name : Waterford Carpets Limited | Filename : P0510_2008.xls | Return Year : 2008 |

07/05/2009 12:56

0

Transfer Destination	European Waste Code	Hazardous	Quantity T/Year	Description of Waste	Waste Treatment Operation	Method Used		Location of Treatment	Name and Licence / Permit No. of Recoverer / Disposer / Broker	Address of Recoverer / Disposer / Broker	Name and Address of Final Destination i.e. Final Recovery / Disposal Site (HAZARDOUS WASTE ONLY)	Licence / Permit No. of Final Destination i.e. Final Recovery / Disposal Site (HAZARDOUS WASTE ONLY)
						M/C/E	Method Used					
Within the Country	04 02 22	No	191.94	Carpet Trimmings	D1	M	Weighed	Offsite in Ireland	Veolia WCP/KK/029(A)/07	KTK Landfill Kildare		
Within the Country	04 02 21	No	20.0	Carpet Fibres	D1	C	Volume Calculation	Offsite in Ireland	Veolia WCP/KK/029(A)/08	KTK Landfill Kildare		
Within the Country	15 01 01	No	4.0	Cardboard Cores	R3	M	Weighed	Offsite in Ireland	Veolia WCP/KK/029(A)/08 Molloy Metals Recycling Ltd	Smurfit Ireland Ltd		
Within the Country	15 01 04	No	10.4	Metal bands / scrap metal	R4	M	Weighed	Offsite in Ireland	WP/08/14	Enniscorthy		
Within the Country	15 01 03	No	1.7	Pallets	R3	M	Weighed	Offsite in Ireland	Veolia WCP/KK/029(A)/08	Limerick		
Within the Country	15 01 02	No	1.8	Plastic Wrap	R3	C	Volume Calculation	Offsite in Ireland	Veolia WCP/KK/029(A)/08	Limerick		
Within the Country	20 03 01	No	20.0	Mixed Municipal Waste	D1	M	Weighed	Offsite in Ireland	Veolia WCP/KK/029(A)/07	KTK Landfill Kildare ATM B.V. Vlasweg 12, 4782		
To Other Countries	04 02 09	No	1.3	Waste PVC Glue	R3	m	None	Abroad	Ormonde Environmental W36-02	PW Moerdijk, The Netherlands		

* Select a row by double-clicking the Description of Waste then click the delete button