

South Dublin County Council

**Ballymount Solid Waste
Recycling and Baling Centre and Civic Amenity**

Waste Licence Reg. No.W0003-03

**Annual Environmental Report
1st January 2008 – 31st December 2008**



Issued 31st March 2009

**BALLYMOUNT SOLID WASTE
RECYCLING AND BALING CENTRE
ANNUAL ENVIRONMENTAL REPORT**

1st January 2008 – 31st December 2008

**Environmental Services Department,
South Dublin County Council,
PO Box 4122,
Town Centre,
Tallaght,
Dublin 24.**

March 2009

**BALLYMOUNT SOLID WASTE
RECYCLING AND BALING CENTRE
ANNUAL ENVIRONMENTAL REPORT
1st January 2008 – 31st December 2008**

REVISION CONTROL TABLE

User is Responsible for Checking The Revision Status Of This Document

Rev. No.	Description of Changes:	Prepared by:	Checked by:	Approved by:	Date:	No. of Copies
0	1st Draft	P.H.			07/10/00	3
1	1st Draft	JMC			08/03/02	3
2	2nd Draft	JMC	LM	SM	31/01/03	3
3	3rd Draft	P.G			31/01/04	3
4	3rd Draft	P.G	DF		24/01/05	3
5	1st Draft	P.G				5
6	1st Draft	G.M.			04/01/07	5
7	1st Draft	G.M.	LM		02/04/08	5
8	1st Draft	E.B.	LM		23/03/09	5

TABLE OF CONTENTS

1. INTRODUCTION.....	4
1.1. SOUTH DUBLIN COUNTY COUNCIL/VEOLA ENVIRONMENTAL POLICY	4
2. DESCRIPTION OF THE SITE.....	5
3. MONITORING AND EMISSIONS SUMMARY	7
3.1. MONITORING OF SURFACE WATER.....	7
3.2. EMISSIONS TO SURFACE WATER	10
3.3. EMISSIONS TO FOUL SEWER.....	10
3.4. NOISE	14
3.5. DUST AND AIR QUALITY MONITORING (PM10).....	15
3.6. ODOUR MONITORING	16
4. SITE DEVELOPMENT WORKS.....	19
5. WASTE RECEIVED BY AND CONIGNED FROM THE FACILITY	20
5.1. WASTES BALED	20
5.2. CIVIC AMENITY.....	21
5.3. WASTE RECEIVED AND HANDLED	23
6. NUISANCE CONTROL.....	24
6.1. ODOUR CONTROL.....	24
6.2. LITTER CONTROL	25
6.2. DUST CONTROL.....	25
7. ENVIRONMENTAL INCIDENTS AND COMPLAINTS.....	26
7.1. INCIDENTS SUMMARY	26
7.1. COMPLAINTS SUMMARY	26
7.2. CORRECTIVE ACTION	26
7.3. NON-COMPLIANCE SUMMARY	27
8. ENVIRONMENTAL MANAGEMENT PROGRAMME.....	28
8.1. REPORT	28
8.2. PROPOSAL.....	30
8.3. OPERATIONAL AND ENVIRONMENTAL PROCEDURE.....	31
8.4. MANAGEMENT AND STAFFING STRUCTURE	32
9. TANK AND BUND TESTING.....	34
10. RESOURCE CONSUMPTION SUMMARY.....	35
11. REPORT ON PUBLIC INFORMATION FILE	38
12. SITE OPERATIONS.....	39
12.1. DUTY AND STANDBY CAPACITY OF WASTE HANDLING PLANT.....	39
12.2. VENTILATION PLANT CAPACITY AND SPARES.....	39

Table 3-1 Emissions to Surface Waters.....	10
Table 3-2 Noise Monitoring Results Summary	14
Table 3-3 Dust and PM10 Monitoring Results	15
Table 3-4 Odour Concentrations.	16
Table 4-1 Site Development Works during Reporting Year	19
Table 4-2 Site Development Works for the Forthcoming Year.....	19
Table 5-1 MSW Quantities into Facility	20
Table 5-2 Composition of Waste Received at the Civic Amenity Facility	22
Table 8-1 Achievement of Environment Objectives & Target.....	29
Table 8-2 Proposed Environment Objectives & Targets for 2008.....	30
Table 10-1 Principle Resource Consumers.....	35
Table 10-2 Energy and Resources (January 08 – December 08).....	35
Table 12-1 Surface Water Monitoring Results	41
Table 12-2 Emissions to Foul Sewer.....	42
Table 12-3 Dublin City Waste Composition Study Results	44
Table 12-4 Urban Household Waste Characterisation (EPA National Waste Database – 1998).....	44
Figure 2.1 Site Location Map	6
Figure 3.1 Surface Water Monitoring - Temperature and pH.....	7
Figure 3.2 Surface Water Monitoring - Biological Oxygen Demand (ELV 25mg/l)	8
Figure 3.3 Surface Water Monitoring - Chemical Oxygen Demand (ELV 150mg/l).....	8
Figure 3.4 Surface Water Monitoring - Mineral Oil (ELV 10mg/l)	9
Figure 3.5 Surface Water Monitoring - Suspended Solids (ELV 35mg/l)	9
Figure 3.6 Emissions to Foul Sewer - pH and Temperature (ELV 5-10 & 42 ^o C).....	10
Figure 3.7 Emissions to Foul Sewer - Biochemical Oxygen Demand (5 day) (ELV 10,000mg/l)	11
Figure 3.8 Emissions to Foul Sewer - Chemical Oxygen Demand (ELV 30,000mg/l)	11
Figure 3.9 Emissions to Foul Sewer – Ammonia (ELV 50mg/l).....	12
Figure 3.10 Emissions to Foul Sewer - Oils Fats and Grease (ELV 100mg/l)	12
Figure 3.11 Emissions to Foul Sewer – Detergents (ELV 100mg/l)	13
Figure 3.12 Emissions to Foul Sewer - Total Suspended Solids (ELV 2,000mg/l).....	13
Figure 3.13 Emissions to Foul Sewer – Sulphates (ELV 500mg/l)	14
Figure 5.1 Monthly Waste Quantities to Arthurstown Landfill.....	21
Table 5-2 Composition of Waste Received at the Civic Amenity Facility Figure 5.2 Recyclable Waste Types Received at the Civic Amenity Facility	22
Figure 5.3 Tonnage Received and Sent	23
Figure 7.1 Number of Complaints.....	27
Figure 8.1 Management and Staffing Structure	33
Figure 10.1 Water Use.....	36
Figure 10.2 Diesel Consumption.....	36
Figure 10.3 Electricity Consumption	37
Figure 10.4 Steel wire Consumption	37
Figure 12.1 Monitoring Location Map	45

Appendix	
Table 3.1	Surface Water Emission Results
Table 3.3	Emissions to Foul Sewer
Table 5.2	Dublin City Waste Composition Study Results
	Monitoring Location Plan
Document 1.0	Pollutant Release Transfer Register

1. INTRODUCTION

South Dublin County Council (the Council) holds a Waste Licence (Reg. No. 0003-03) to operate Ballymount Solid Waste Recycling and Baling Centre and Civic Amenity Facility at Ballymount Avenue, Walkinstown, Dublin 12. In accordance with the requirements of Condition 11.5 of the Waste Licence, an Annual Environmental Report (AER) for the facility must be submitted to the Environmental Protection Agency (EPA).

This is the ninth AER, covering the reporting period 1st January 2008 – 31st December 2008 as agreed with the Agency.

The facility is operated on the basis of a joint venture agreement between the Council and VEOLIA Environmental Services. The facility is located at: -

Ballymount Solid Waste Recycling and Baling Centre,
Ballymount Avenue,
Walkinstown,
Dublin 12

Tel. (01) 4621251 Fax: (01) 4525145

National Grid co-ordinates for the location of the facility are: E 3103 N 2302.

1.1. South Dublin County Council/Veolia Environmental Policy

The Council and VEOLIA Environmental Services have developed an Environmental Policy for the facility, which is committed to conducting all activities such that they have a minimal effect on the environment.

All levels of management are committed to implementing and maintaining an environmental management programme in compliance with the requirements of the Environmental Protection Agency.

The key objectives of the Council and VEOLIA Environmental Services joint venture management committee are: -

1. A commitment to compliance with the Waste Licence and all pertinent environmental legislation and approved codes of practice. To this end, the joint venture management committee will co-operate fully with all regulatory authorities.
2. To continually develop and modify all procedures to reduce environmental impacts.
3. To train and educate all employees in the skills and understanding necessary to minimise any risk to the environment.
4. To ensure that all management and employees are familiar with the conditions of the Waste Licence and the content of the Environmental Management Plan (EMP).

2. DESCRIPTION OF THE SITE

The Recycling and Baling Centre is located at Ballymount Avenue, Walkinstown, Dublin 12, within an area zoned for industrial development. The site location plan is shown in Figure 1. The facility is surrounded in the industrial park by various warehouses and industrial buildings and is adjacent to the N81 (Greenhills Road) on its eastern boundary.

Waste handling activities at the facility consist of baling municipal/household waste for transfer to Arthurstown Landfill, and the acceptance of certain recyclable waste types at the Civic Amenity Facility. The main activity is the baling and transfer of waste to Arthurstown Landfill. The licensed waste activities are listed below.

Licensed waste disposal activities, in accordance with the Third Schedule of the Waste Management Act 1996 include: -

- Class 12: Repackaging prior to submission to any activity referred to in this Schedule.
- Class 13: Storage prior to submission to any activity referred to in this Schedule, other than temporary storage, pending collection, on the premises, where the waste concerned is produced.

Licensed waste recovery activities, in accordance with the Fourth Schedule of the Waste Management Act, 1996 include: -

- Class 3: Recycling or reclamation of metals and metal compounds.
- Class 4: Recycling or reclamation of other inorganic materials.
- Class 13: Storage of waste intended for submission to any activity referred to in a preceding paragraph of this schedule, other than the temporary storage, pending collection, on the premises where such waste is produced.

It is considered that the activities carried out at the baling centre do not have an adversely significant impact upon local environmental conditions due to the fully enclosed nature of the facility. While the Civic Amenity Facility is not enclosed, there are no activities carried out which affect local environmental conditions.

Local environmental conditions do not significantly influence the facility. Rainfall records for the area indicate an average annual rainfall of 1019mm. The surface water drainage system is designed with an adequate capacity for high rainfall events at the site. Prevailing winds are from a south westerly direction.

There are approximately 17 people employed on a full-time basis at the facility.

Reproduced from Ordnance Survey with Government Permission – Permit No. 46391/98
DISCOVERY SERIES SHEET No. 50



Figure 2.1 Site Location Map

3. MONITORING AND EMISSIONS SUMMARY

Environmental monitoring results for the reporting period are outlined in the following sections. An interpretation of the results and impacts on the environment are also presented. A site plan showing the position of each monitoring location is included in the Appendix.

3.1. Monitoring of Surface Water

Condition 8.1 of Waste Management Licence W0003-03 requires that quarterly monitoring be undertaken at three points on the partially culverted stream to the Northwest of the facility. Two of the monitoring points (S1 and S2) are upstream (us) of the site, while the other point (S3) is downstream (ds) of the site. Surface water parameters are measured quarterly in accordance with Schedule D.4 of the Licence. The surface water monitoring results are summarised in Table 3.1, which can be found in the Appendix and in Figures 3.1 to 3.5. The results are compared where applicable to the limits for the A3 water quality class as set out in the EU Quality of Surface Water Intended for the Abstraction of Drinking Water Regulations (SI No. 294 of 1989).

The surface water monitoring results indicate that for grab samples taken during the reporting period, there was 2 exceedences upstream of the facility of the A3 water quality limits for samples taken on 10th November 2008.

Suspended solid levels upstream of the facility at points S1 and S2 recorded elevated levels of suspended solids content of 70mg/l and 77mg/l respectively.

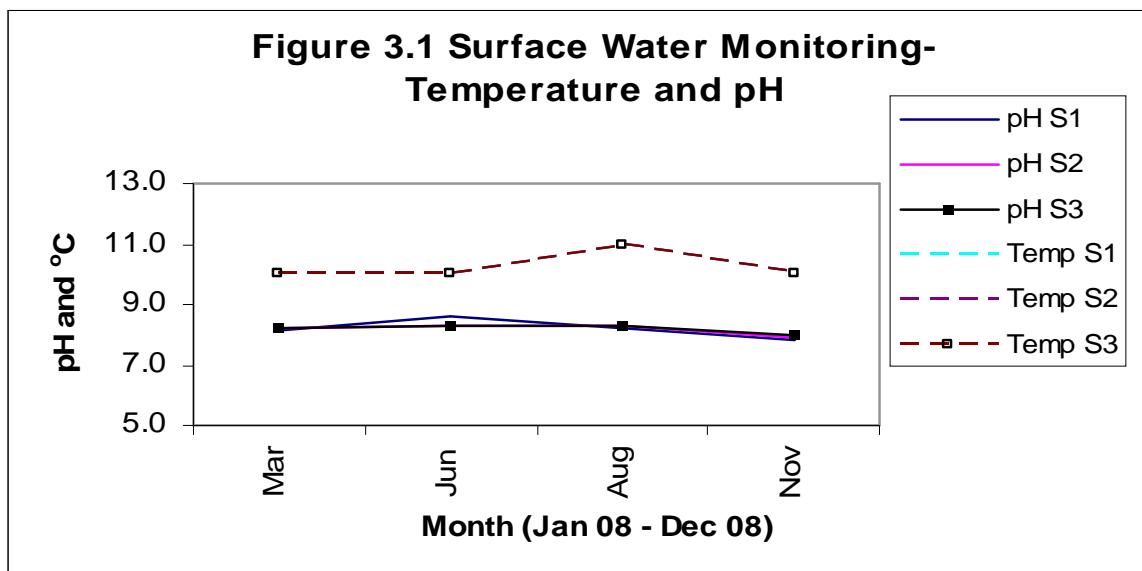


Figure 3.1 Surface Water Monitoring - Temperature and pH

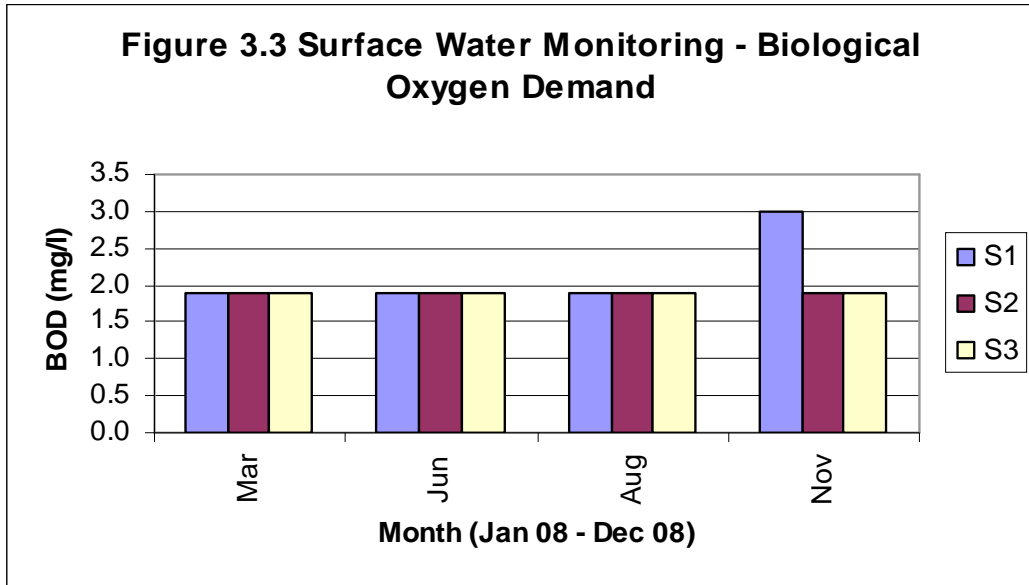


Figure 3.2 Surface Water Monitoring - Biological Oxygen Demand (ELV 25mg/l)

(BOD detectable limit: <2mg/l)

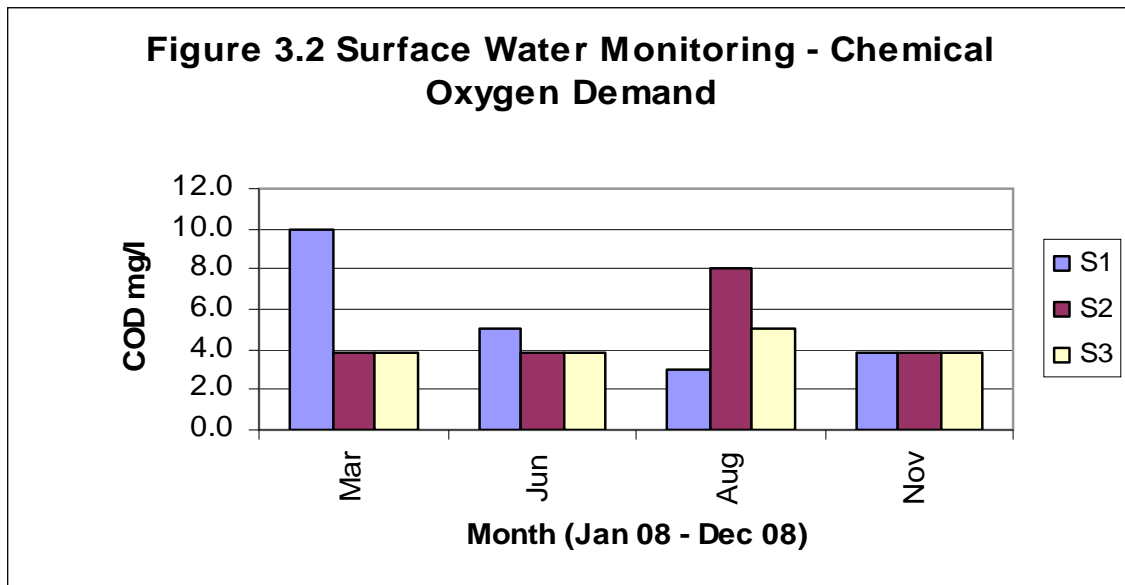


Figure 3.3 Surface Water Monitoring - Chemical Oxygen Demand (ELV 150mg/l)

(COD detectable limit: <4mg/l)

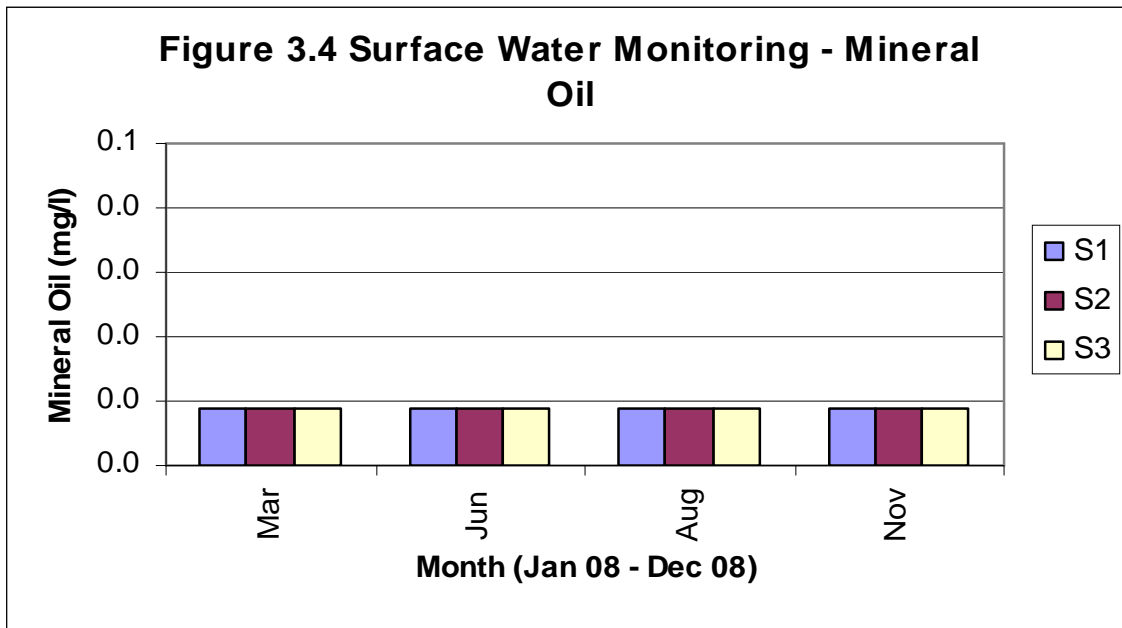


Figure 3.4 Surface Water Monitoring - Mineral Oil (ELV 10mg/l)

(Mineral Oil detectable limit: 0.04mg/l)

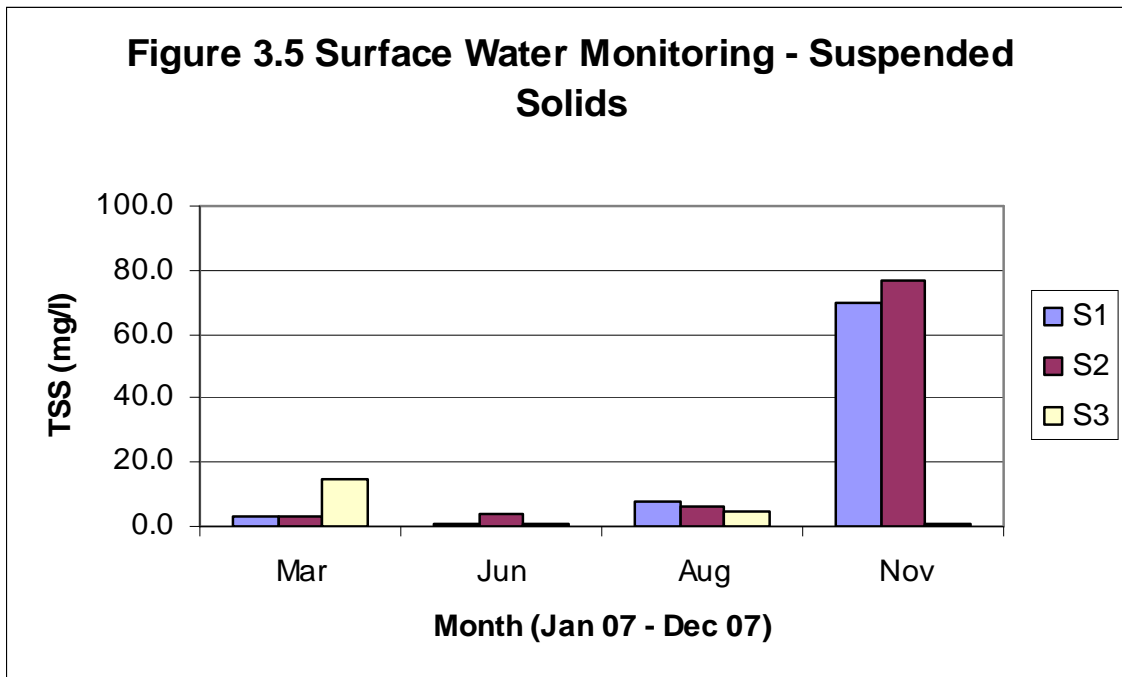


Figure 3.5 Surface Water Monitoring - Suspended Solids (ELV 35mg/l)

3.2. Emissions to Surface Water

The Licence requires that emissions to surface water be measured quarterly (subject to rainfall events) at SWE1A and SWE1B. Schedule C.3 sets out Emission Limit Values for Chemical Oxygen Demand (COD) and Oils, Fats, Greases (OFG). Condition 6.6.2 sets out the trigger levels for Biological Oxygen Demand (BOD) and Suspended Solids (SS).

Table 3.2 Due to insufficient sampling volumes at rainfall events only one sample was obtained during the reporting period.

Monitoring Point	SWE1A				SWE1B			
	COD mg/l	OFG mg/l	BOD mg/l	SS mg/l	COD mg/l	OFG mg/l	BOD mg/l	SS mg/l
ELV*	150	10	25	35	150	10	25	35
March	554	<0.4	215	188	113	<0.4	6.0	221
May	No flow	No flow	No flow	No flow	No flow	No flow	No flow	No flow
September	No flow	No flow	No flow	No flow	No flow	No flow	No flow	No flow
December	No flow	No flow	No flow	No flow	No flow	No flow	No flow	No flow

Table 3-1 Emissions to Surface Waters

3.3. Emissions to Foul Sewer

Condition 8.1 requires that emissions to foul sewer (at F6) be monitored on a quarterly basis. No exceedence of the Emission Limit Values as set out in Schedule C.4 of the Waste Licence was recorded for any emissions to the sewer over 4 sampling events. The results are illustrated in Figures 3.6 to 3.12. A table of monitoring results is included in the Appendix.

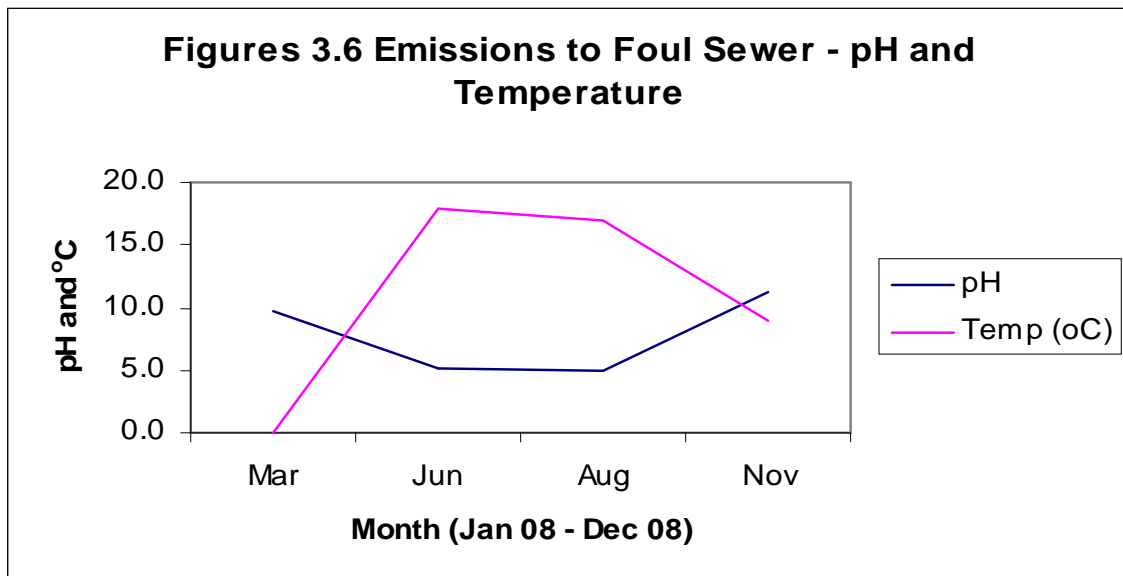


Figure 3.6 Emissions to Foul Sewer - pH and Temperature (ELV 5-10 & 42^oC)

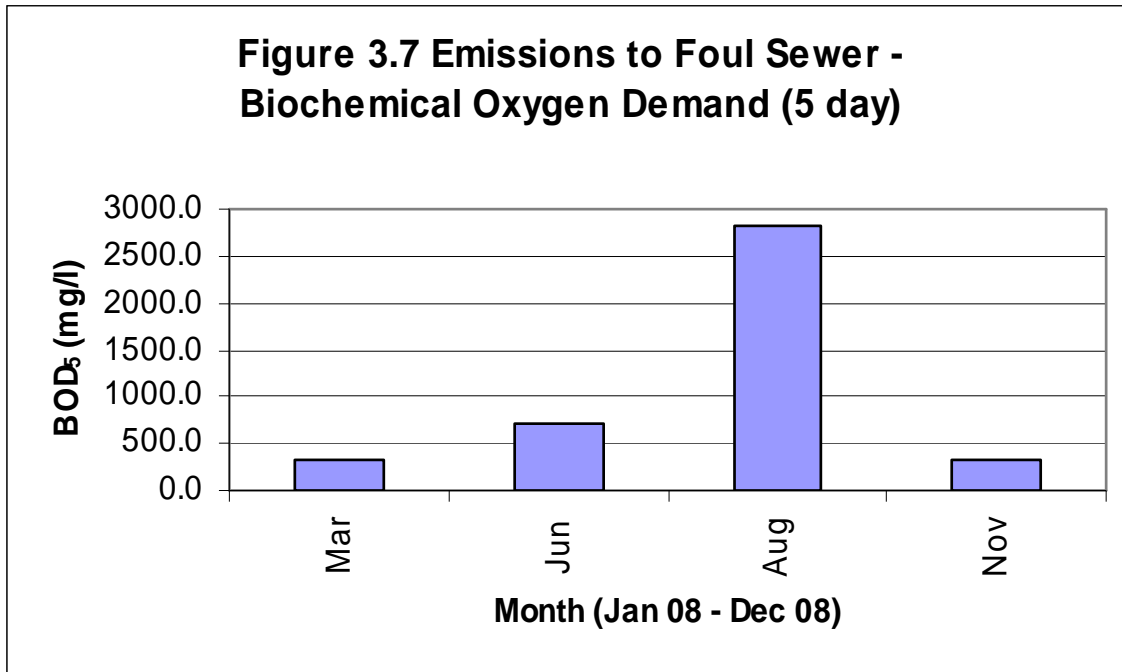


Figure 3.7 Emissions to Foul Sewer - Biochemical Oxygen Demand (5 day) (ELV 10,000mg/l)

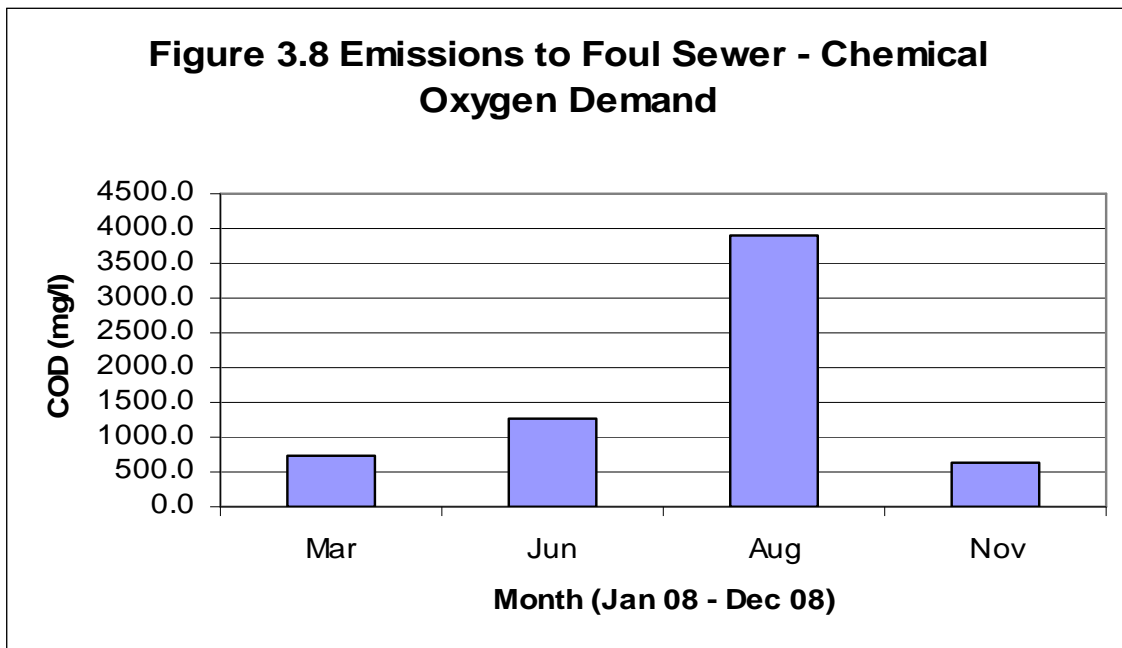


Figure 3.8 Emissions to Foul Sewer - Chemical Oxygen Demand (ELV 30,000mg/l)

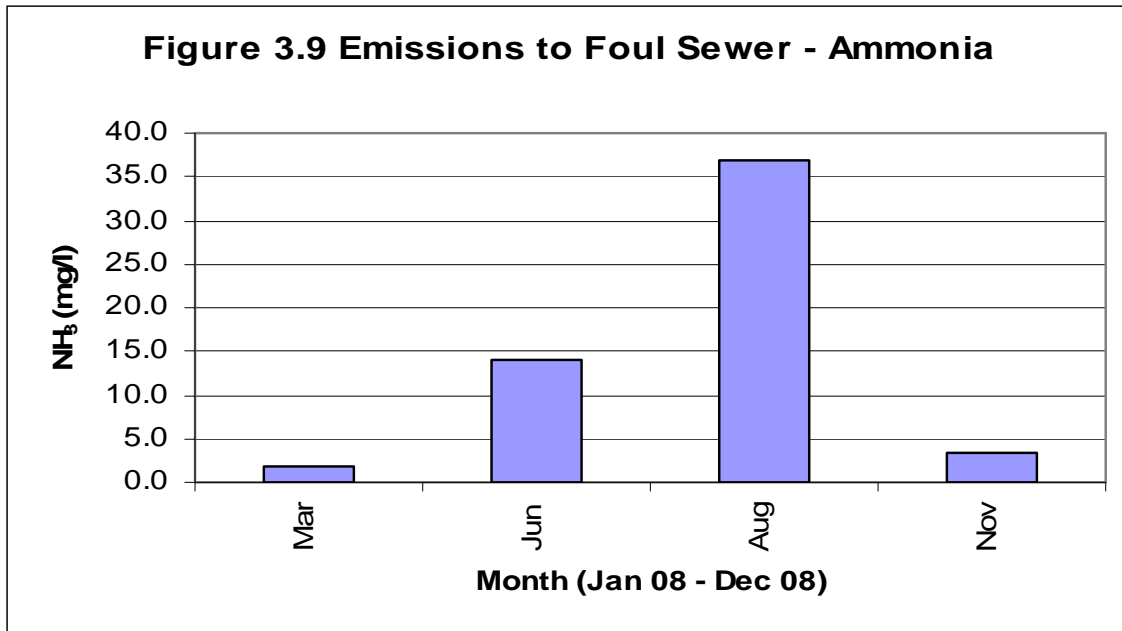


Figure 3.9 Emissions to Foul Sewer – Ammonia (ELV 50mg/l)

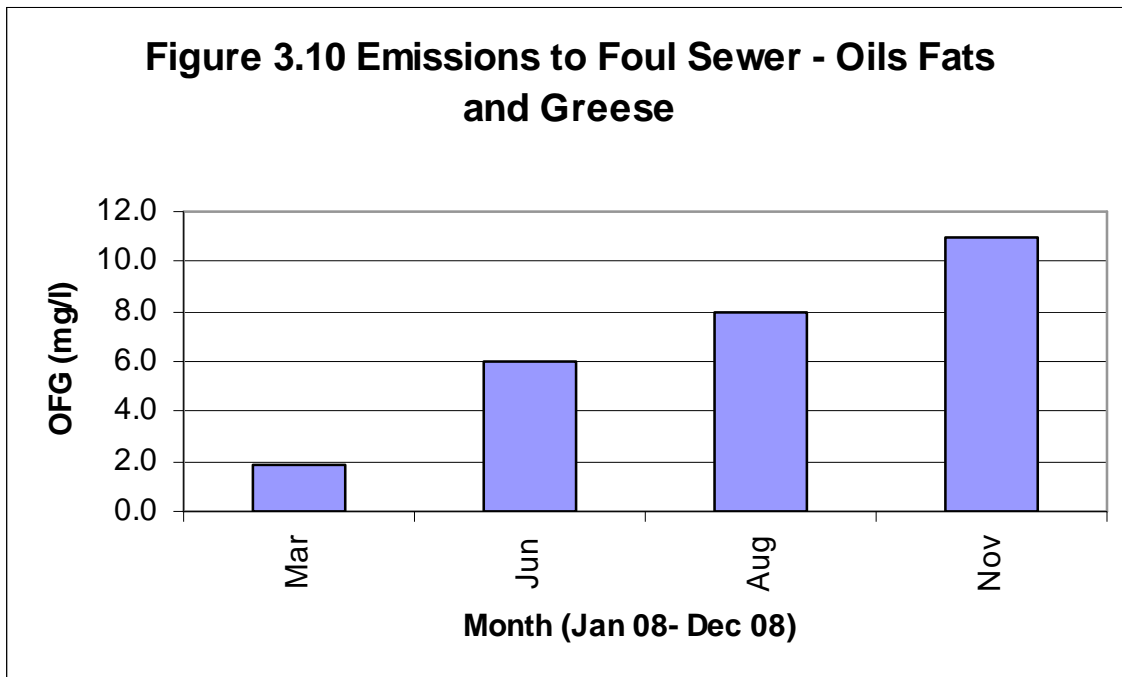


Figure 3.10 Emissions to Foul Sewer - Oils Fats and Grease (ELV 100mg/l)

(OFG detectable limit: <2mg/l)

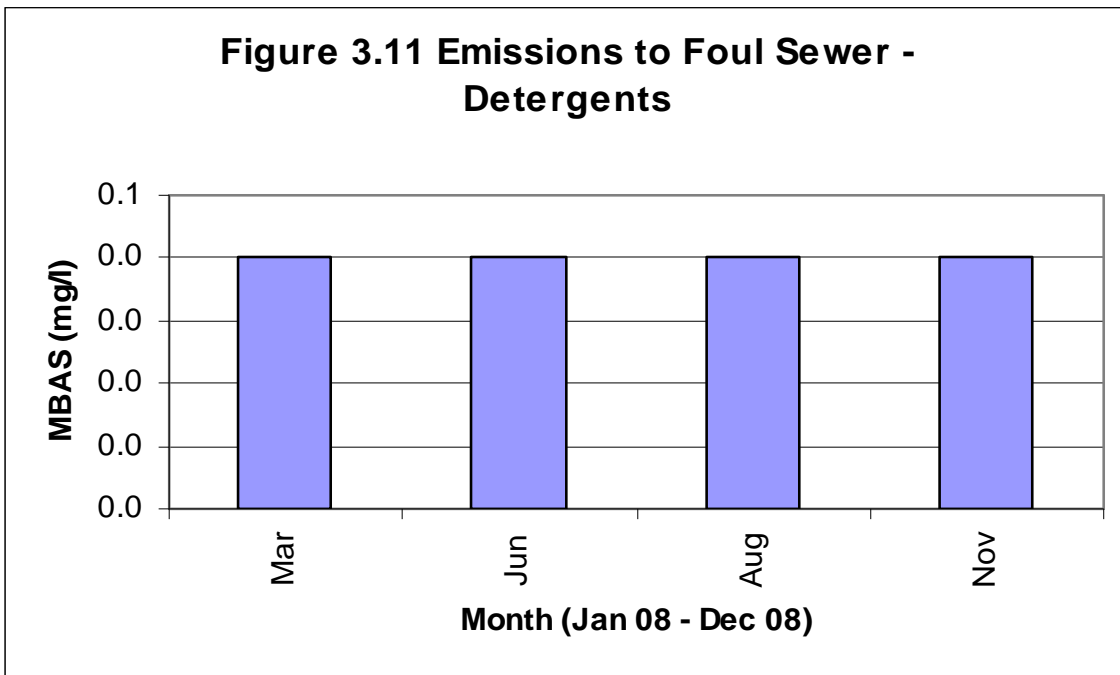


Figure 3.11 Emissions to Foul Sewer – Detergents (ELV 100mg/l)

(Detergents detectable limit: <0.05mg/l)

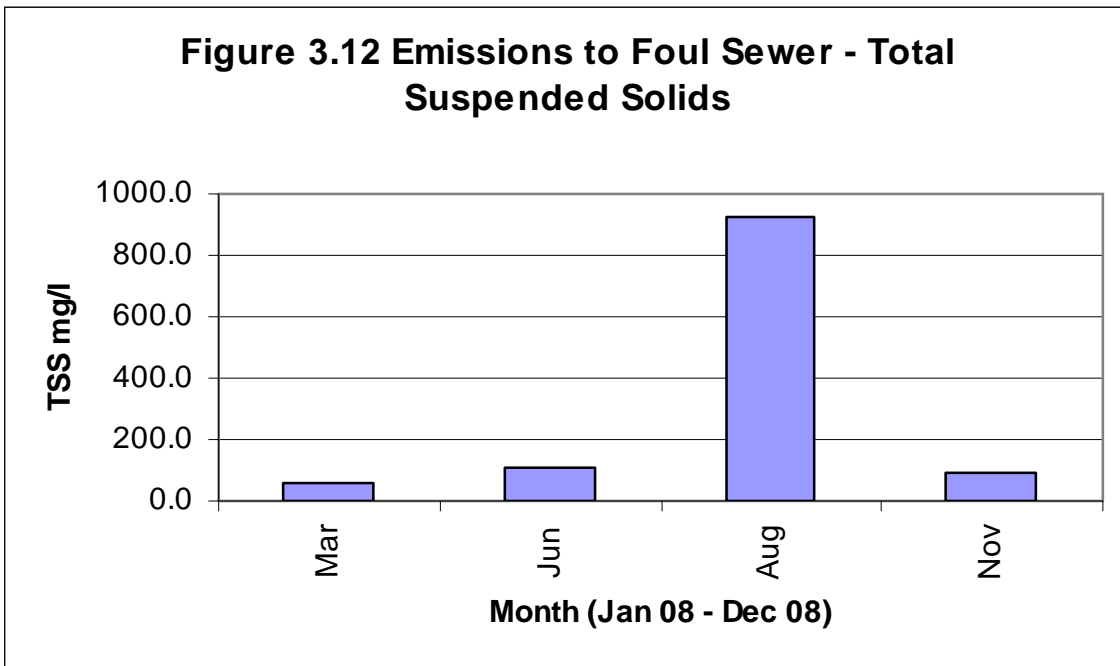


Figure 3.12 Emissions to Foul Sewer - Total Suspended Solids (ELV 2,000mg/l)

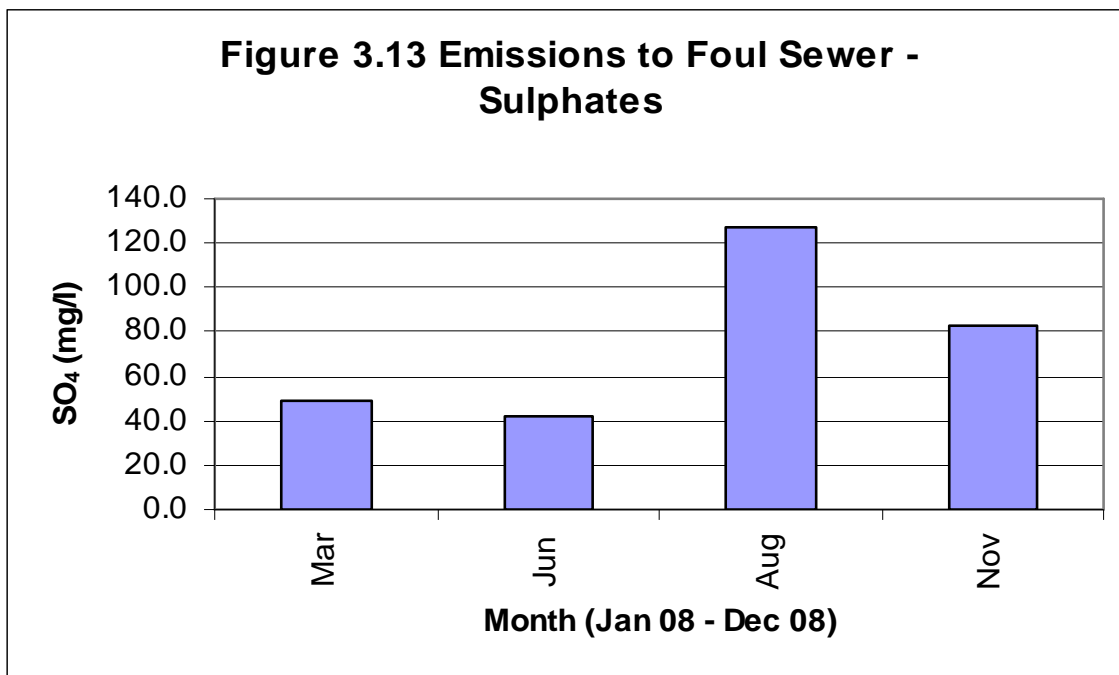


Figure 3.13 Emissions to Foul Sewer – Sulphates (ELV 500mg/l)

3.4. Noise

Noise Monitoring was carried out on 25th of July 2008. Monitoring was done for both night and day. Noise monitoring results are presented below in Table 3.2.

Location	Point Location NG Ref.	Sound Pressure dB(A)		
		L(A) _{EQ}	L(A) ₁₀	L(A) ₉₀
<u>Daytime</u>				
N1	Boundary	65	66	50
N2	Boundary	60	62	53
N3	Boundary	63	62	50
N4	Boundary	70	72	57
N5	Nearest NSL	61	64	53
<u>Night-time</u>				
N1	Boundary	42	44	39
N2	Boundary	47	48	43
N3	Boundary	52	54	47
N4	Boundary	59	45	37
N5	Boundary	58	60	48

Table 3-2 Noise Monitoring Results Summary

NSL = Nearest Noise Sensitive Location.

The site boundary noise limits specified in the licence are that of 55dB(A) daytime and 45dB(A) night-time.

The results presented in Table 3.2 indicate that these limits were exceeded at nine of the monitoring points during daytime and night-time monitoring. Levels of noise attributed to neighbouring industrial facilities and Road traffic from the Greenhills road. This road is busy both during the day and night.

The facility is located in an industrial area and the nearest noise sensitive location is approximately 200m east of the site on the boundary and comprises of a residential area.

The results indicate that one predominant source of noise, at this location N5, is traffic on the Greenhills road ($L(A)_{10}$ daytime 64 db(A) and night-time is 60 dB(A)). Other sources of noise is that from operations at neighbouring industrial facilities giving a daytime $L(A)_{EQ}$ at N1 of 65 db(A) and at N3 of 65 db(A).

The principal onsite noise sources at the facility include truck and vehicle movements, the baling plant and front end-loaders in the Waste Reception Area.

The Results from the noise monitoring are reduced when compared to those from previous reporting periods.

3.5. Dust and Air Quality Monitoring (PM10)

Dust monitoring was carried out during March to November 2008. PM_{10} monitoring was carried out during November 2008. Monitoring occurred at three locations, in compliance with Condition 8.1. The monitoring established the impact of site operations on localised Air Quality. Results of this monitoring are presented in Table 3.5. The Dust results for D1, D2 and D3 are in compliance with guideline limits values (TA Luft Dust- 350 mg/m²/day). PM_{10} results are also in compliance with guideline limits (EC/1999/30 PM_{10} - 50 ug/m³).

Monitoring Location	Dust March (mg/m ² /day)	Dust Jun. (mg/m ² /day)	Dust Aug. (mg/m ² /day)	PM10 (ug/m ³) Nov 2008
D1	168	210	198	21
D2	339	248	305	24
D3	204	112	259	19

Table 3-3 Dust and PM10 Monitoring Results

3.6. Odour Monitoring

Table 3.4 sets out the results for odour concentrations in the environs of the facility. In the absence of Irish Legislation a guideline value of 5ou/m³ as a 98%ile has been adopted. This value has been adopted from a planning appeal for the upgrading of a wastewater treatment works at Newbiggin-by-the-sea in Northumberland, U.K.

Monitoring Location	98%ile of 1-hour Average Odour Concentration (ou/m ³) <i>March 2008</i>	98%ile of 1-hour Average Odour Concentration (ou/m ³) <i>June 2008</i>	98%ile of 1-hour Average Odour Concentration (ou/m ³) <i>August 2008</i>	98%ile of 1-hour Average Odour Concentration (ou/m ³) <i>November 2008</i>
OD1 Facility Access Road	39	53	64	72
OD2 East of Facility	23	29	45	68
OD3 South of the Facility	31	39	39	78
OD4 West of the Facility	25	45	53	49
OD5 In front of Waste Reception Area	29	42	49	62
OD6 Greenhills Housing Estate	36	53	23	44

Table 3-4 Odour Concentrations.

3.6.1. Interpretation of Monitoring Results

3.7.1 Surface Water Background Monitoring and Emissions to Surface Water

The background surface water monitoring results indicate that the levels of analyses detected downstream of the facility did not exceed the values detected upstream in 2008.

Sample collection and analysis of surface water emissions was carried out on one occasion during the reporting period due to a lack of rainfall events, results show an elevation in COD, BOD and an exceedence of the allowable limit of Suspended Solids at SWE1A. Results at SWE1B were within the set limits for COD and BOD, with elevated results being recorded for Suspended Solids. Future samples of surface water will be taken by council staff during adequate rainfall events to insure complete analysis.

3.7.2 Emissions to Foul Sewer

There was no exceedence of the ELVs in Schedule C.4 of the Waste Licence was recorded over 4 sampling events.

3.7.2.1 pH

pH results were typically neutral to alkaline during the reporting period, with results in November reporting elevated alkaline levels..

3.7.2.2 Temperature

All temperature results were within the specified limits as set out in Schedule C.4 of the Waste Management Licence. The average temperature for this reporting period was 15.3°C compared to previous year's average figure of 12.75°C.

3.7.2.3 Biochemical Oxygen Demand

No exceedence occurred during the monitoring period. The maximum and minimum BOD levels were recorded at 2832 mg/l and 317 mg/l respectively. The average BOD level was 1053 mg/l, down on last years figure of 1432mg/l.

3.7.2.4 Chemical Oxygen Demand

All levels measured during the reporting period were compliant with the Emission Limit Value as set out in the Waste Licence 0003-03. The levels ranged from 3885 mg/l to 639 mg/l.

3.7.2.5 Ammonia

No exceedence was reported during the previous reporting period. The Average level was 14 mg/l. The maximum level was measured at 37 mg/l.

3.7.2.6 Total Suspended Solids (TSS)

No exceedence was reported during the previous reporting period. Average levels were 295 mg/l which was lower than last years figure of 404.3 mg/l.

3.7.2.7 Oils Fats and Grease (OFG)

All levels measured during the reporting period were compliant with the Emission Limit Value as set out in the Waste Licence 0003-03. The levels ranged from <2mg/l to 11 mg/l.

3.7.2.8 Detergents

As with the previous reporting year, all samples for this period indicate compliance with the ELV for detergent emissions to foul sewer. The levels throughout the period recorded less than the detectable level <0.05 mg/l.

3.7.2.9 Sulphates

As with the previous reporting year, all samples for this period indicate compliance with the ELV for detergent emissions to foul sewer. Average levels were 75.3 mg/l and 73.5 mg/l for this year and last year respectively.

3.7.3 Noise

The results presented in Table 3.2 indicate that daytime and night-time noise levels recorded at the site boundary and the nearest noise sensitive location are below and above the ELV's of 55 dB(A). Limits were exceeded at nine of the monitoring points during daytime and night-time monitoring.

Road traffic was the dominant source of noise ($L(A)_{10}$) at all of the locations. The activities at the adjoining glass recycling facility are the predominant noise source at N1 during the day.

These results indicate that the facility has no significant impact on the surrounding environment. No complaints were received at the baling station for noise nuisance.

3.7.4 Dust and Air Quality Monitoring (PM_{10})

The results presented in Table 3.3 indicate that the TA Luft limit for dust deposition ($350\text{mg}/\text{m}^2/\text{d}$) was not exceeded during the reporting period at monitoring locations (D1-D3).

One set of monitoring results was obtained for PM_{10} levels at locations D1-D3. None of the results for PM_{10} exceeded the Emission Limit Value as set out in the Waste Licence 0003-03

3.7.5 Odour Monitoring

Odour monitoring as per Schedule D6 was carried out during the reporting period. To support daily odour inspections carried out by the Environmental Manager or suitably qualified person, quarterly odour monitoring was initiated. Independent monitoring consultants conduct monitoring at the facility. On completion of the monitoring, a report is issued assessing the impact of the operation on its environs. The assessments are presented in the form of odour concentration contours produced using US EPA approved dispersion modelling techniques.

All ambient odour threshold concentrations ranged between $78\text{OU}_E/\text{m}^3$ to $23\text{OU}_E/\text{m}^3$ for the reporting period 2008.

No odour complaints were received at the facility during the reporting period. No distinct odours were detected within the vicinity of the period throughout the year. Hydrogen Sulphide concentrations recorded at each monitoring location were less than 3ppb in ambient air. All ambient air concentrations of TVOC represented characteristics of traffic based emissions.

4. SITE DEVELOPMENT WORKS

Works undertaken to, at a minimum, comply with the Licence conditions during the reporting period are summarised in Table 4.1.

Requirement	Time Scale
Improve Signage to Civic Amenity Facility	Achieved
Further expansion of recycling facilities at the Civic amenity Site by increasing waste acceptance type.	Achieved.
Resurface WRA floor	Not Achieved
Install Waste water trickling filter	Not Achieved

Table 4-1 Site Development Works during Reporting Year

Requirement	Time Scale
Install stand alone high pressure washer system for baler area.	August 2009.
Further expansion of recycling facilities at the Civic amenity Site by increasing waste acceptance type.	July 2009.
Resurface WRA floor	December 2009.
Rainwater Harvesting for baling shed	November 2009.

Table 4-2 Site Development Works for the Forthcoming Year

5. WASTE RECEIVED BY AND CONSIGNED FROM THE FACILITY

5.1. Wastes Baled

5.1.1 Waste Composition

Waste accepted at the Baling Centre is Municipal Solid Waste (MSW) from Dublin Corporation, South Dublin County Council, as well as non-recyclable waste from the Civic Amenity Facility. The quantities of waste accepted at the baling centre are summarised in Table 5.1.

Sources of MSW	Tonnes 08	Tonnes 07	Tonnes 06	Tonnes 05	Tonnes 04	Tonnes 03	Tonnes 02	Tonnes 01/ 02	Tonnes 99 / 00
Dublin Corporation (DC)	119,988.80	135,605.11	139,629	141,582	144,463	146,290	163,748	164,720	193,685
South Dublin County Council (SDCC)	57,509.53	61,534.29	60,559	61,353	63,411	77,527	79,188	79,373	76,316
Civic Amenity	11,187.11	7,407.09	4,189	3,360	2,495	1,695	1,748	2,559	2,395
Other	8,946.17	43,617.66	62,847	72,518	65,694	72,080	56,380	29,497	5,843
Total	197,632	249,986	267,225	278,814	276,063	297,592	301,064	276,149	278,239

Table 5-1 MSW Quantities into Facility

The composition of accepted waste is estimated from a waste composition survey carried out on household waste in Dublin City between 1996 and 1997. This MSW accounts for the majority of waste accepted (approx 80%) at the facility. The results for the survey are presented in the Appendix, which also includes a table of figures for urban household waste characterisation presented in the Agency's 1998 National Waste Database, published in March 1998.

5.1.2 Baled Waste Quantities

Monthly quantities of baled waste sent to Arthurstown Landfill facility (Licence Reg. 4 – 1) are shown in Figure 5.1.

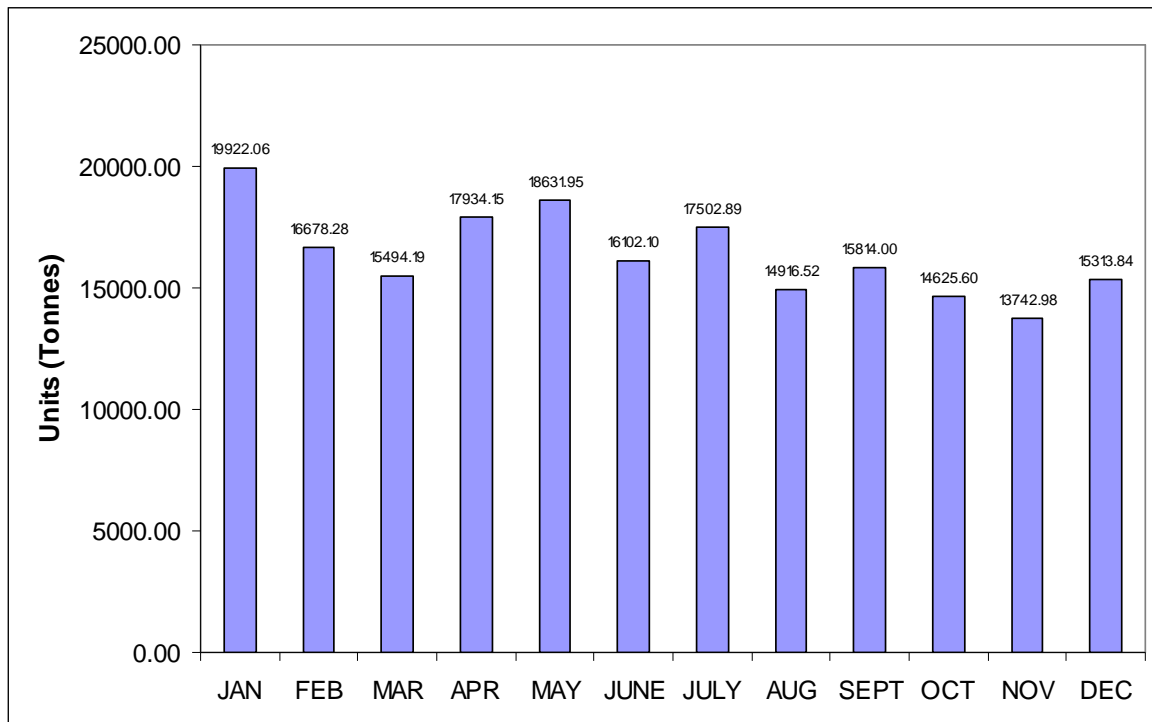


Figure 5.1 Monthly Waste Quantities to Arthurstown Landfill

5.2. Civic Amenity

5.1.2 Waste Composition to Civic Amenity

The Civic Amenity Facility is a waste deposit facility for recyclable and non-recyclable waste delivered by members of the general public. Receptacles are provided for the deposit of glass, textiles, plasterboard, rubble, household hazardous, waste oil, paper, green waste, waste oil, batteries, beverage cans, plastics, scrap metal and white goods/ electrical items. Quantities of each of these wastes received are shown in Table 5.2 and Figure 5.2.

Bulky waste referred to in Table 5.2 consists of waste, which due to its bulky nature is unsuitable for baling. This waste typically consists of furniture, timber and mattresses, in general, materials that cannot be compacted to produce physically stable bales.

Bulky waste was collected in bins at the Civic Amenity and is shredded prior to being added to waste for baling and referred to in table 5.2

Description	Tonnes 2008	Tonnes 2007	Tonnes 2006	Tonnes 2005	Tonnes 2004	Tonnes 2003	Tonnes 2002	Tonnes (feb/01 feb/02)	Tonnes (Oct 99 Oct 00)	Tonnes (Oct 98/Oct 99)
Glass	135.81	168.08	149.84	105.55	71.04	23.05	15.62	12.20	34.7	4.5
Paper	68.67	117.06	104.54	138.78	155.59	94.37	73.57	45.47	27.8	N/A
Textiles	37.73	41.66	52.45	25.32	21.85	0.66	6.19	5.63	2.3	6.2
WEEE	882.53	662.25	740.20	590.9	289.96	165.49	65.66	N/A	N/A	N/A
Plastic	33.66	80.31	46.00	48.62	23.73	8.33	3.23	N/A	N/A	N/A
Waste Oil	47.9	32.30	35.82	34.7	38.06	29.22	27.39	36.13	21.2	26.9
Green waste	1,454.58	1384.91	889.22	801.21	759.48	539.2	441.62	235.92	N/A	N/A
Batteries	27.36	57.02	66.16	36.46	25.04	12.16	12.55	15.18	5.0	17.2
Beverage cans	2.85	2.82	5.49	4.71	7.52	1.37	1.53	30.87	2.6	0.2
Metal	513.64	502.42	392.41	431.68	459.50	333.76	340.71	619.88	780.0	480.1
Waste to baling station for baling	3722.62	7407.09	4189.2	3,360.2	2,492.0	1,694.6	1,748.8	2,559.4	2,395.2	3,486.1
Bulky waste	7464.49	1365.3	8310.6	5,549.2	3,016.0	2,410	3,242.5	8,466.5	8,652.8	4,547.9
Household Hazardous	45.2	85.00	43.66	28.57	N/A	N/A	N/A	N/A	N/A	N/A
Polysterene		0.98								
Plasterboard	61.55	31.23								
Rubble	777.57	781.31								
Total Civic Amenity	15,276.16	12,719.74	14,973	11,156	7,359	6,173	6,328	13,103	13,081	8,569.2

Table 5-2 Composition of Waste Received at the Civic Amenity Facility

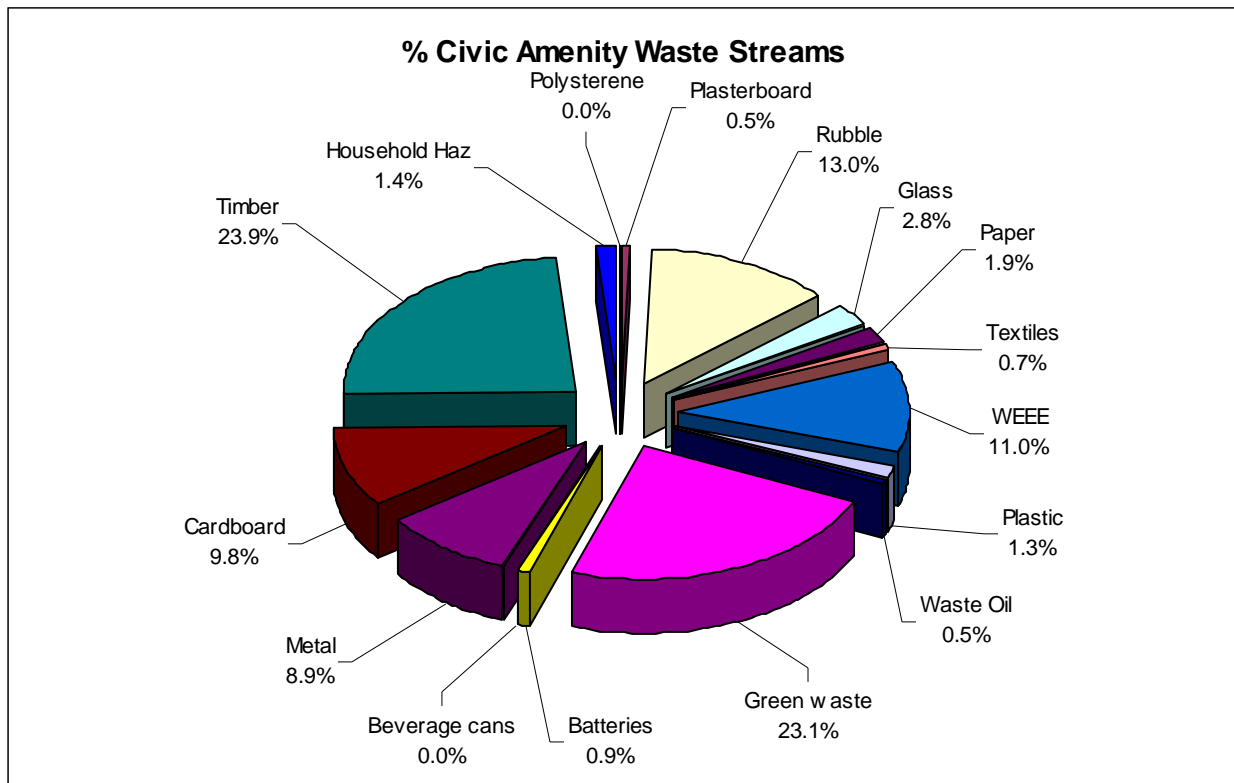


Figure 5.2 Recyclable Waste Types Received at the Civic Amenity Facility

5.3 Waste Received and handled

Waste received at the baling facility during the reporting period amounted to 197,632 tonnes, which is 126,848 tonnes below the Licence limit of 324,480 tonnes per annum

The following figure is a summary of the waste movements to and from the facility. Small differences in quantities entering and leaving the site are due to the 4% allowed tolerance error on the weighbridge (Class III accuracy: Source EN45501: 1992).

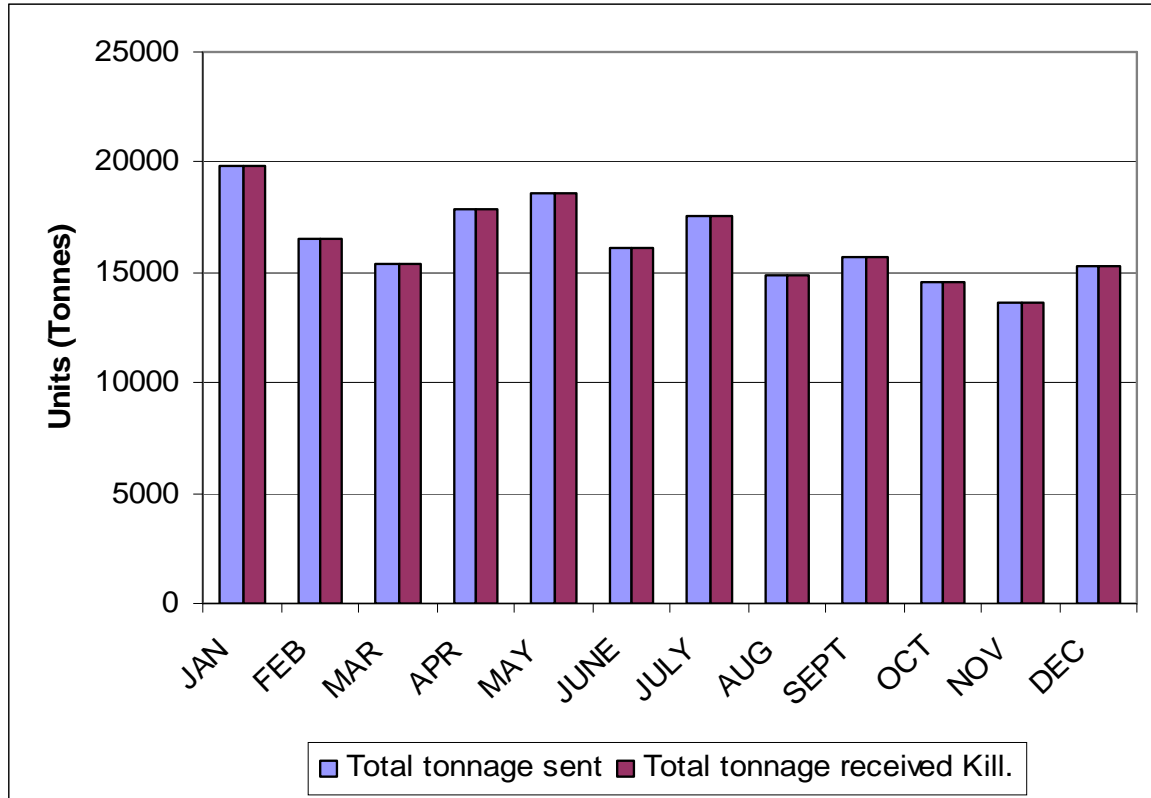


Figure 5.3 Tonnage Received and Sent

6. NUISANCE CONTROL

6.1. Odour Control

Historically odour was the largest source of nuisance for the facility resulting in 100% of all complaints received at the facility.

6.1.1. Daily Odour monitoring

In compliance with Condition 10.3 of the Waste Licence, a daily odour inspection of the facility environs is carried out and staff of the Council's Environmental Services Department keeps a written and electronic record.

6.1.2. Quarterly Odour Monitoring

In Compliance with Schedule D.6 of the Waste Licence, an independent contractor carries out quarterly odour monitoring.

6.1.3. Negative Air Pressure and Emission control system

The in-situ negative air pressure and emission control system which is a dry dust filtration and annular bed carbon filtration system was installed in January 2008. The dry dust filtration and annular bed carbon filtration system replaced the existing bio filtration system. The annular carbon filtration units provides improved guaranteed odour removal efficiencies and also provide an increase in treatment capacity for the facility.

- Increased design treatment capacity of approximately 25,000 m³/hr and a maximum increased treatment capacity of up to 30,000 m³/hr.
- Increased odour threshold concentration performance to 300 OuE/m³.
- Continuous performance independent of cyclic odour loading.
- Elimination of dust and particulate plugging of the bed medium through the use of a regenerative self-cleaning dust filtration plant.

6.2. Litter Control

In compliance with Condition 7.4 of the Waste Licence, the licensee removes any litter in or around the facility immediately. An Iveco 130E15 watering/sweeping machine is present on site at all times. No complaints were received at the baling station for litter nuisance.

6.2. Dust Control

In compliance with Condition 7.6 of the Waste Licence, in dry weather the roads and hard standing areas are sprayed with water as and when required. No complaints were received at the baling station for dust nuisance.

6.3.1. Dust Monitoring

In Compliance with Schedule D.6 of the Waste Licence, an independent contractor carries out dust monitoring three times a year.

7. ENVIRONMENTAL INCIDENTS AND COMPLAINTS

7.1 Incidents Summary

Condition 11.2 of the Waste Licence requires that the licensee shall make written records of the environmental incidents. No incidents were recorded during the reporting period.

7.1.1 Complaints Summary

There were no complaints received from local residents or commercial interests during the reporting period.

7.2 Corrective Action

7.2.1 Surface/Foul water emission non compliance

- ❖ A foul water treatment system service was carried out in August 2008, where a new mixer and dosing pump was fitted and a new screen installed.
- ❖ All interceptors emptied and cleaned when required and at a minimum of every two weeks by licensed contractors. The surface water drainage system is cleaned every quarter.
- ❖ Surface water drainage network to be diverted to foul network by November 2009.

7.2.1.1 Fast Acting Doors.

- ❖ All 6 doors into the baling shed have been replaced with harder plastic roller doors.
- ❖ Air curtains have been installed to door at the waste reception to prevent odours escaping when doors are in operation.
- ❖ Door contractor is contracted to work on the door on the same day.
- ❖ Complete set of spares for both size doors on site.

7.2.1.1.1 Odour

- ❖ The new Negative Pressure and Emissions Control System is in place.
- ❖ Daily odour inspections conducted.
- ❖ Quarterly Odour monitoring conducted by independent consultants.

7.3. Non-Compliance Summary

A total of 4 non-compliances were received at the facility during the Reporting period. These included:

- ❖ 1No. Non compliance of Condition 6.8 *Noise Emission limits*
- ❖ 1No. Non compliance of Condition 6.6.2 *Surface water Emission limits*
- ❖ 1No. Non compliance of condition 3.13.2 *Bund Storage*
- ❖ 1No. Non compliance of condition 5.4.1 *Operational Controls*

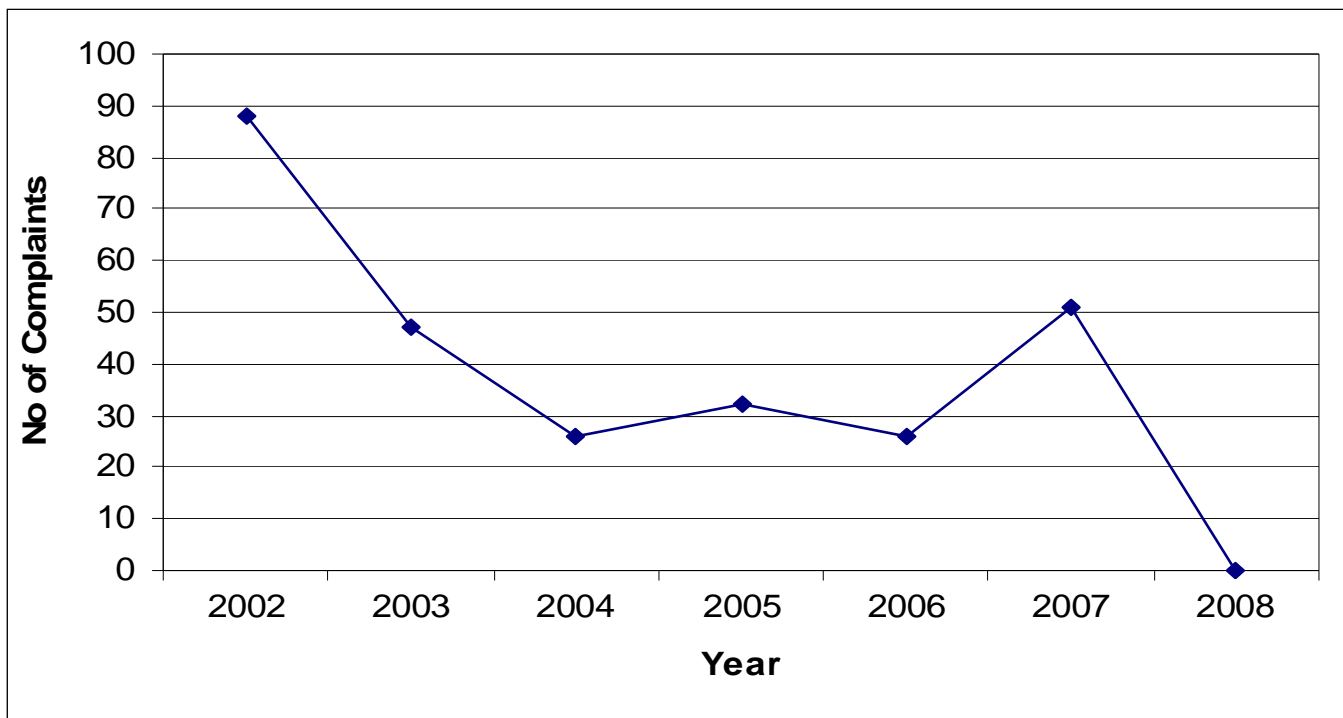


Figure 7.1 Number of Complaints

8. ENVIRONMENTAL MANAGEMENT PROGRAMME

8.1. Report

In compliance with Condition 2.3 of the Waste Licence, a review was carried out of the Environmental Management Plan (EMP); the reviewed EMP was submitted to the Agency for agreement on the 31st March 2009.

Site operational procedures are described in the EMP.

The schedule of Environmental Objectives and Targets for the reporting year, and a proposal for the forthcoming year, are summarised below.

8.1.1. Schedule of Environmental Objectives and Targets

A detailed Schedule of Environmental Objectives and Targets for the reporting period is presented in Table 8.1.

8.1.2. Achievement of Environment Objectives and Targets

In all cases the Council has made significant efforts to achieve all of the targets set by the individual objectives. Not all targets were achieved within the reporting period but corrective measures were put in place when difficulties were encountered. A summary of the targets achieved is presented in Table 8.1.

The overall responsibility for achieving these objectives and targets lies with the Senior Engineer of South Dublin County Council and Managing Director of VEOLIA Environmental Services. Items referred to within these objectives are site specific and are the combined responsibility of the Council's Environmental Manager and Veolia's Facility Manager

Objective/ Target	Description	Status
Objective 1	To ensure continued implementation of the environmental Policy	
Target 1.1	Continue to conduct Environmental Training refresher course for all Baling Station Staff.	Achieved- Ongoing.
Target 1.2	Hazardous Waste Handling training	Achieved
Target 1.3	Spill response training	Achieved
Objective 2	To promote public awareness of the facility and encourage use of the civic amenity/recycling facilities	
Target 2.1	Further expansion of recycling facilities at the Civic Amenity Facility by increasing the number of waste types accepted for recycling.	Achieved
Target 2.2	Redistribute the environmental information and education sheet for educational purposes.	Not Achieved
Target 2.3	Provide a specific web site for Ballymount detailing	Not Achieved

	all services, costs & destination sites.	
Objective 3	To Continue site development/improvement	
Target 3.1	Upgrade of floor in the WRA	Not Achieved
Target 3.2	Upgrade of security cameras on the site.	Achieved
Target 3.3	Installation of new weighbridge	Achieved
Objective 4	To minimise the environmental impact arising from nuisance caused by the facility	
Target 4.1	Installation of solid rapid roller doors at bailing hall.	Achieved.
Target 4.2	Installation of solid rapid roller doors at Forklift Access	Achieved
Objective 5	To comply with Emission Limit Values in Schedule E of Waste Licence	
Target 5.1	Reinstall Bio filter Pillows to all Interceptors to reduce OFG levels. Divert all surface water to foul network via 800m ³ flow attenuation tank.	Achieved Not achieved- Carry Forward November 2009
Objective 6	To successfully control emergencies at the facility	
Target 6.1	Monthly monitoring of Fire Hydrants. Review & Update of Site specific safety statement. Review & Update of Site specific safety statement.	Achieved Achieved Achieved

Table 8-1 Achievement of Environment Objectives & Target

8.2. Proposal

The Environmental Objectives and Targets proposed for the forthcoming year (listed in Table 8.2) are based on the requirements of the current Waste Licence. However, should the Agency grant a revised licence within this period, the proposed schedule would in turn require revision to reflect any new conditions.

Table 8-2 Proposed Environment Objectives & Targets for 2009.

Target Number	Description	Time Frame	Responsibility
Target 1.1	Continue to conduct Environmental Training refresher course for all Baling Station Staff.	Quarterly in 2009.	Env. Manager.
Target 1.2	Hazardous Waste Handling training	30 th Jun 2009	Env. Manager
Target 1.3	First Aid Training	1 st July 2009	
Target 2.1	Further expansion of recycling facilities at the Civic Amenity Facility by increasing the number of waste types accepted for recycling.	31 st August 2009	Env. Manager
Target 2.2	Redistribute the environmental information and education sheet for educational purposes.	30 th June 2009	Env. Manager
Target 2.3	Provide a specific web site for Ballymount detailing all services, costs & destination sites.	31 st October 2009	Env. Manager
Target 3.1	Develop Carpet segregation and recycling.	31 st August 2009	Facil Manager.
Target 3.2	Collection of loose EPS	30 th Jun 2009	Facil Manager
Target 3.3	New traffic management system for CA.	31 st July 2009.	Env. Manager
Target 4.1	Install stand alone high pressure washer system for baler area.	31 st Aug 09	Facil Manager
Target 4.2	Roof Water Harvesting.	30 th Nov 09	Facil Manager Env. Manager
Target 5.1	Reinstall Bio-Tubes to all interceptors to reduce OFG levels.	30 th Apr 2009.	Env. Manager.
	To divert all facility surface water to foul drains through a flow attenuation tank.	31 st Dec 2009.	Env. Manager
	Install new Dust Filter Cartridges in odour control system	30 th Apr 2009.	Env. Manager
	Replace Activated Carbon in odour control system.	31 st May 2009.	Env. Manager
	Full service on WWTP.	31 st Aug 2009.	Env. Manager
Target 6.1	Monthly monitoring of fire hydrants. Review and update of site specific safety statement.	30 th Jun 09 31 st July 09	Facil Manager VEOILA Safety Rep.
Target 7.1	Complete reline of Balers to be 30 implemented.	31 st May 09	Facil Manager
	Full replacement of oil in Baler 1 and 2	30 th April 09	Facil Manager

8.3. Operational and Environmental Procedure

Documented operating procedures for the Baling Centre, which are described in detail in the Environmental Management Plan are sub-divided as follows: -

- Standard Operating Procedures
- Environmental Procedures
- Emergency Response Procedures

A brief summary of these is provided below.

8.1.3. Standard Operating Procedures

Standard Operating Procedures have been developed for each of the routine operations conducted at the facility. The purpose of these is to ensure that routine tasks are carried out in the same manner each time they are undertaken, even if different operators perform them. Their implementation will encourage quality as well as safe work practices. Regard is also had for the site specific Safety Statement when carrying out any operations at the facility.

The routine operations identified are as follows:

- SOP 001- Weighbridge operation
- SOP 002- Waste Acceptance at the Baling Centre and Civic Amenity Facility
- SOP 003- Baling of waste
- SOP 004- Loading and shunting of containers
- SOP 005- Environmental Monitoring;
- SOP 006- Housekeeping;
- SOP 007- Operation Of Odour Control System
- SOP 008- Operation/Maintenance Of Wastewater Treatment Works
- SOP 009- Opening/Closing Of Waste Reception Shutters
- SOP 010- Weekly Drainage Inspection
- SOP 011- Fuel Storage and Pollution Control Inspection
- SOP 012- Weekly Interceptor Inspection
- SOP 013- Monthly Over ground Inspection Form
- SOP 014- Emergency Generator Operation/Maintenance
- SOP 015- Nuisance Inspection

8.3.2. Environmental Procedures

Environmental procedures have been developed in order to maintain the Environmental Management System and to ensure continued improvement in the operation and management of the facility. Environmental Procedures are subject to change on evaluation.

The Environmental Procedures are as follows:

- EPROC 001- Corrective Action Procedures
- EPROC 002- Awareness and Training Procedures
- EPROC 003- Incident Response and Reporting Procedures
- EPROC 004- Complaints Procedures

8.3.3. Emergency Response Procedures

Condition 10.1 of the Waste Licence requires that a written Emergency Response Procedures (ERP) be submitted. An updated document describing these procedures was submitted to the Agency September 2002 as part of the Environmental Management Plan annual submission. Emergencies have been defined as unexpected events, which prohibit the baling operation or reduce baling capacity, or any occurrence resulting in non-compliance with the conditions of the Waste Licence. Potential emergencies at the facility can be grouped under the following headings: -

- Inability to process waste.
- Inability to transport baled waste to Arthurstown Landfill.
- Threats to staff health and safety.
- Threats to the environment.

The ERP document, which is maintained in the facility office, contains detailed procedures and a list of emergency contact numbers to be used in the event of an emergency. A copy of the Council's "Major Emergency Plan" is also maintained in the facility office.

8.4. Management and Staffing Structure

The Council, as the licensee, operates the facility under the terms of a joint venture agreement with VEOLIA Environmental Services, a waste management company. The organisational structure for the facility is shown in Figure 8.1.

Operations at the facility are carried out in two distinct areas, namely the Baling Centre and the Civic Amenity Facility. The Joint Venture Management Committee, the Environmental Manager, the Facility Manager and the Operations Supervisor have delegated responsibilities for operations management and supervision in both areas.

Each of the positions identified in Figure 8.1 are discussed in detail in Section 6 of the Environmental Management Plan for the reporting year. Details of the relevant experience and qualifications for each person named, as well as arrangements for absence in the case of annual leave, illness and other absences, are maintained in the facility office and have also been forwarded to the Agency as required by Condition 2.2.

A file consisting of training records for each employee is also maintained in the facility office.

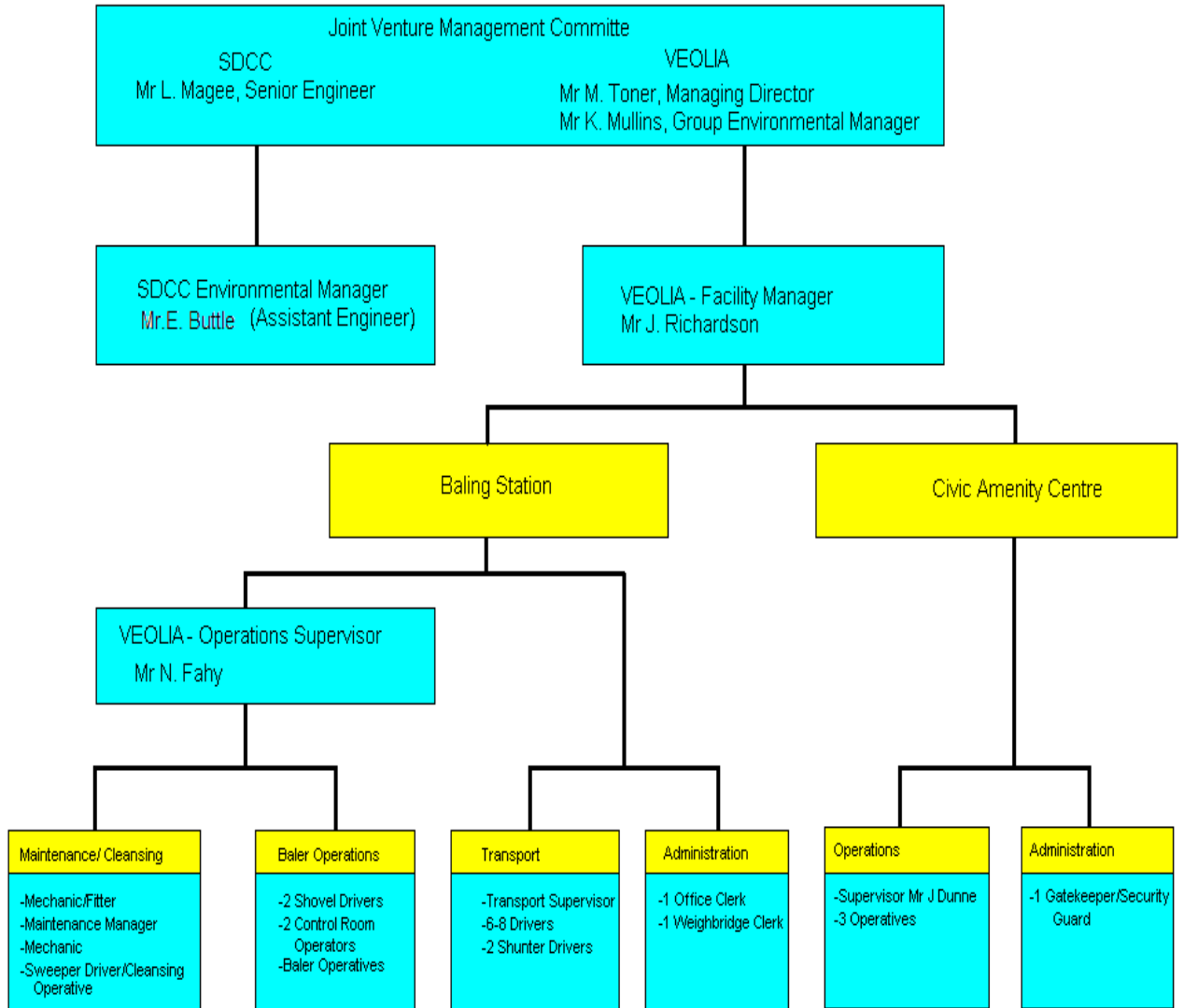


Figure 8.1 Management and Staffing Structure

9. TANK AND BUND TESTING

Condition 3.13.5 of the Waste Licence requires that tank and bund testing be carried out once every three years. All Bunds on-site were tested to BS8007: 1987, on April 2006. At the end of 2008 reporting period all Bunds met the requirements.

10.RESOURCE CONSUMPTION SUMMARY

Resources consumed at the facility include electricity, water, diesel fuel, steel wire, cleaning products, odour products and hydraulic oil. The principle consumers of energy at the facility are summarised in Table 10.1. Resource consumption is also presented in table 10.2 and figures 10.1 - 10.3.

Plant Item	Resource Used
Baling/ Ancillary Equipment	Electricity and Hydraulic Oil
Odour Control System	Electricity and Water
Mobile Plant	Green Diesel and Hydraulic Oil
Road Transfer Fleet	White Diesel

Table 10-1 Principle Resource Consumers

Resource	Quantity Used
Diesel Fuel	64,451 litres
Hydraulic Oil	19,469 litres
Electricity	1,327,362 kWh
Water	6,900 m ³
Cleaning Agents	
Grime Away	18,240 kg
Caustic Soda	7,600 kg
Clean Air	3,700 kg
Steel Wire	156,129 kg

Table 10-2 Energy and Resources (January 08 – December 08)

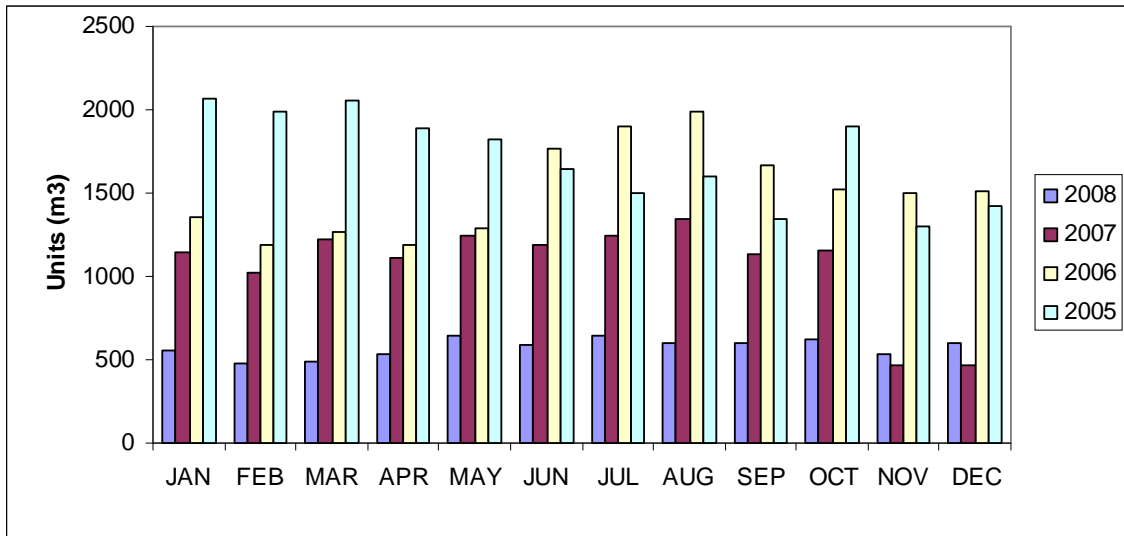


Figure 10.1 Water Use

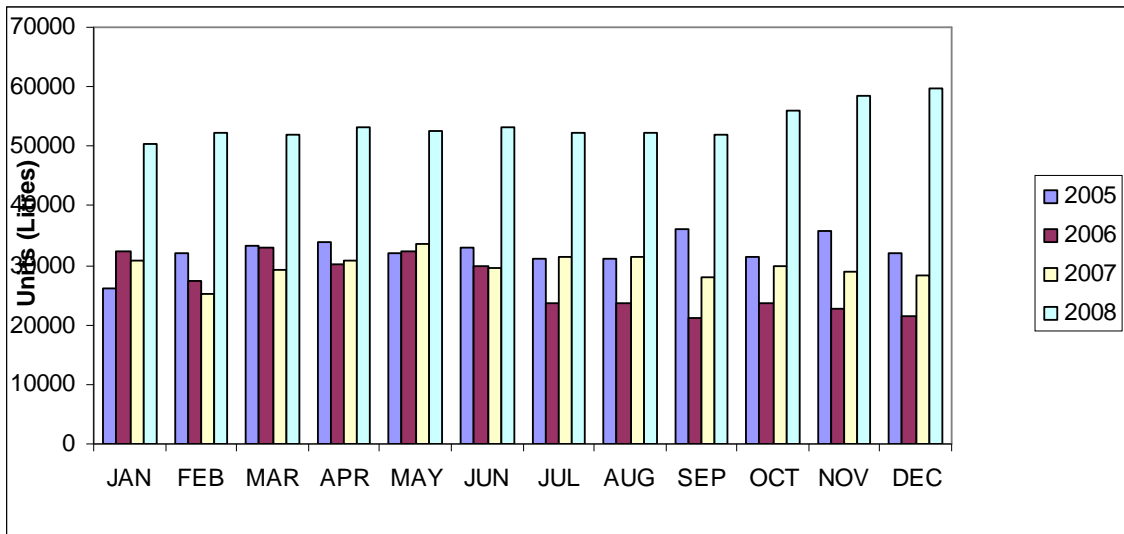


Figure 10.2 Diesel Consumption

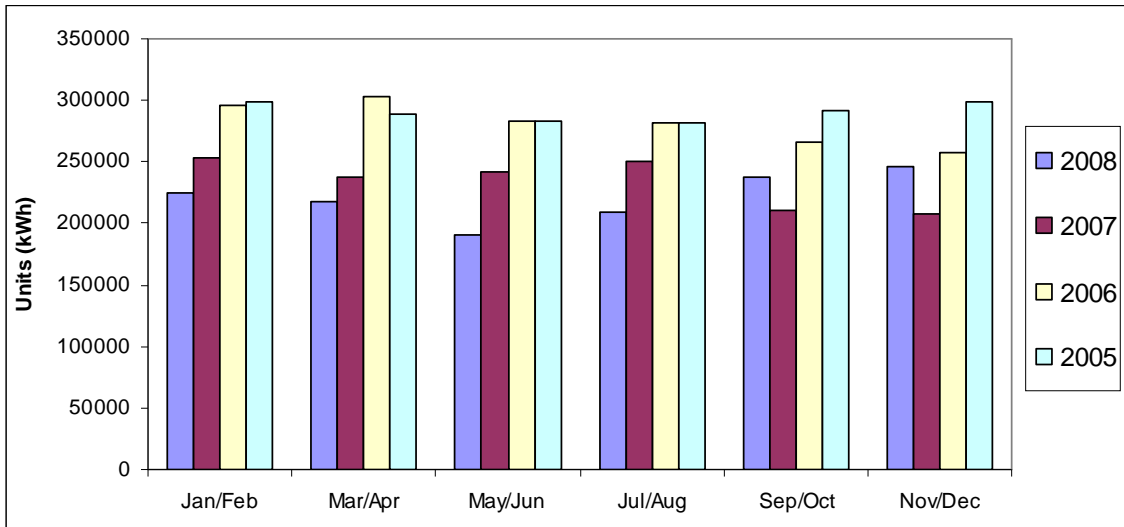


Figure 10.3 Electricity Consumption

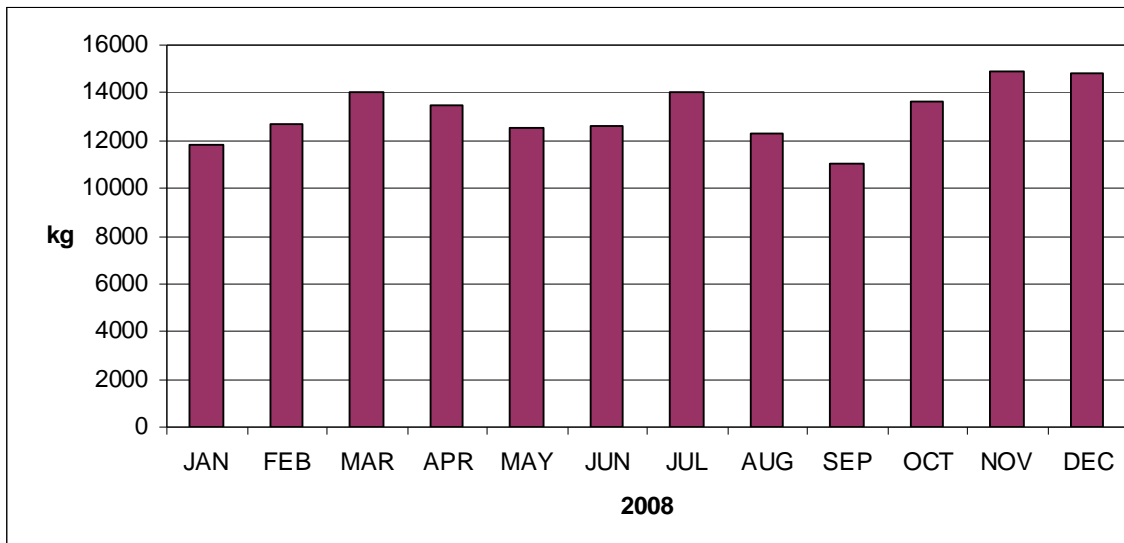


Figure 10.4 Steel wire Consumption

11. REPORT ON PUBLIC INFORMATION FILE

During the 2008 reporting period there was no application received to see the public inspection file.

Pertinent documentation available for public inspection include:

1. Environmental Record File
2. Environmental Monitoring Reports File (Volumes 1-4)
3. Complaints Register
4. Waste Licence
5. Environmental Management Plan
6. Emergency Response Procedures

Members of the public, who wish to view information describing environmental performance of the facility in 2008, can do so by phoning the facility. The facility contact numbers are posted on the main facility entrance sign. The names of the appropriate personnel are as follows:

Mr. John Richardson
Veolia Environmental Services.
Facility Manager

Mr. Eoin Buttle
South Dublin County Council
Environmental Manager

12. SITE OPERATIONS

12.1. Duty and Standby Capacity of Waste Handling Plant

With the introduction of licence W0003-03 the maximum quantity of municipal waste to be accepted at the facility has decreased to 324,480 tonnes. In compliance with condition 1.7 of the waste licence the hours of operation has been increased 6:30a.m. to 9:00 p.m. Monday to Saturday inclusive.

The baling capacity of the machines is 60 tonnes/hr each, which suggests an annual 100% uptime capacity of 542,880 tonnes. During this reporting period the facility was closed for 1 day at Christmas, 10 days for annual maintenance of balers, 1% time loss due to inclement weather, industrial action, accidents etc and a monthly average of less than 4% operational downtime. The quantity of municipal waste baled at the facility for the reporting period was 197,632 tonnes.

This suggests the Duty Capacity of the waste handling equipment was 502,024.8 tonnes and the Standby Capacity was 304,393 tonnes (60%) for this reporting period.

12.2. Ventilation plant capacity and Spares

A negative air and emissions control system was installed 10th December 2007 on the receiving and baling areas of the facility. The unit was installed to the following performance design:

• Volume Flow Rate	<i>100,000 m³/hr</i>
• Inlet Odour Capacity	<i>5,000 OUE/m³</i>
• Outlet Odour Concentration	<i>150 OUE/m³</i>
• Temperature	<i>Ambient</i>
• Relative Humidity	<i>50-100 %</i>
• Bio Filter Volume	<i>405m³</i>
• Stack Height	<i>12m</i>
• Stack Diameter	<i>1.6m</i>

Spares for the negative air pressure and emissions control system are kept on site in the western storage area, these include:

Fan Spares:

Component	No. off
Bearing/Seals set for fans	2 No.
Belt Sets	2 No.

Dustfilter Spares:

Filter Cartridge	2 No.
Nozzles	10 No.

Pump Spares:

Component	No. off
Impeller	1 No.
Mechanical Seals	12 No.
Shaft	1 No.
Shaft protection seals	2 No.

APPENDIX

Parameter	Sample Point	SI294: 1989	Mar	Jun	Aug	Nov
pH	1(us)	5.5 - 9.0	8.1	8.6	8.2	7.8
	2(us)		8.2	8.3	8.3	7.9
	3(ds)		8.2	8.3	8.3	8.0
BOD (mg/l)	1(us)	7.0	<2	<2	<2	3.0
	2(us)		<2	<2	<2	<2
	3(ds)		<2	<2	<2	<2
COD (mg/l)	1(us)	40.0	10.0	5.0	3.0	<4
	2(us)		<4	<4	8.0	<4
	3(ds)		<4	<4	5.0	<4
Suspended Solids (mg/l)	1(us)	50.0	3.0	<1	8.0	70.0
	2(us)		3.0	4.0	6.0	77.0
	3(ds)		15.0	<1	5.0	1.0
Mineral Oil Nitrogen (mg/l)	1(us)	0.01	<0.04	<0.04	<0.04	<0.01
	2(us)		<0.04	<0.04	<0.04	<0.01
	3(ds)		<0.04	<0.04	<0.04	<0.01

Table 12-1 Surface Water Monitoring Results

*us – upstream of baling centre
ds – downstream of baling centre

Parameter	ELV	Mar	Jun	Aug	Nov
pH	5 - 10	9.7	5.1	5.0	11.2
Temp (°C)	<42oC	na	18.0	17.0	9.0
BOD5 (mg/l)	10,000	337.0	726.0	2832.0	317.0
COD (mg/l)	30,000	718.0	1283.0	3885.0	639.0
Ammonia-N (mg/l)	50	1.7	14.0	37.0	3.3
TSS* (mg/l)	2,000	56.0	106.0	925.0	93.0
OFG **(mg/l)	100	<2	6.0	8.0	11.0
Detergents (MBAS)(mg/l)	100	<0.05	<0.05	<0.05	<0.05
Sulphates (SO4) (mg/l)	500	49.0	42.0	127.0	83.0

Table 12-2 Emissions to Foul Sewer

Sub-Category	Average %*
Food Waste	17
Yard and garden waste	17.4
Paper packaging	0.6
Newspapers and brochures	9.2
Magazines and adds on glossy paper	2.4
Other papers	7.4
Flat packaging board	2.2
Corrugated packaging board	1.2
Other cardboards	0.8
Cardboard composites packaging	1.1
Other composites packaging	0.0
Textiles	2.6
Health Care Textiles	4.0
Polyolefin films (PE and PP)	7.7
Clear PVC bottles	1.1
Clear PET bottles	0.6
Polyolefin jars and bottles	1.1
Opaque PVC jars and bottles	0.0
Opaque PET jars and bottles	0.3
Polystyrene foam packaging (PS)	0.2
Other plastic waste packaging	1.4
Other plastic waste	0.8
Wood packaging	0.1
Other combustible packaging	0.0
Other unclassified combustibles	3.4
Green glass packaging	1.4
Clear glass packaging	3.4
Brown glass packaging	0.8
Packaging glass other colours	0.1
Other glass waste	0.2
Ferrous metal packaging	1.8
Other ferrous metal waste	0.3
Aluminium packaging	1.1
Other aluminium waste	0.1
Other metal packaging	0
Other metal waste	0.3
Unclassified Incombustibles	1.8
Aerosols, spray	0.3
Other domestic waste special	0.3
Fine elements < 20 mm round mesh	6.7

** averaged over four campaigns*

Table 12-3 Dublin City Waste Composition Study Results

Sub Category	% Composition in each Local Authority Area	
	Dublin Corporation	South Dublin County Council
Organic Matter	34.64	47.70
Paper	23.34	25.20
Textiles	2.57	1.80
Glass (material)	5.95	5.40
Glass (packaging)	5.65	5.40
Plastic (material)	12.24	8.10
Plastic (packaging)	10.33	6.90
Ferrous Metal (material)	1.77	1.90
Ferrous Metal (packaging)	1.77	1.90
Non-Ferrous Metal (material)	1.14	0.70
Non-Ferrous Metal (packaging)	1.14	0.40
Other Metals (material)	0.70	0.70
Other Metals (packaging)	0.00	0.00
Other materials	17.65	8.50
Other Packaging	2.98	1.60

Table 12-4 Urban Household Waste Characterisation (EPA National Waste Database – 1998)

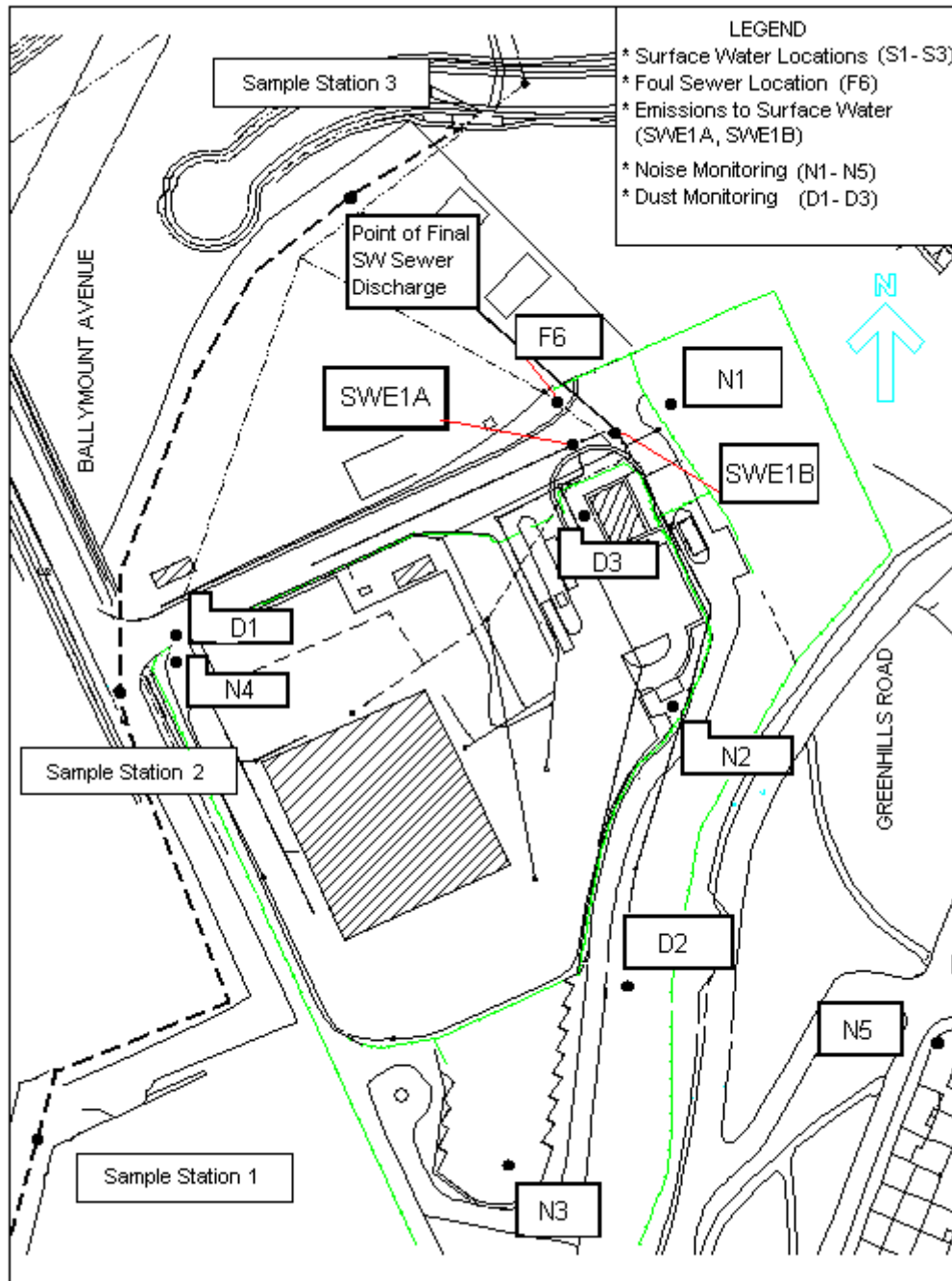


Figure 12.1 Monitoring Location Map

Pollutant Release Transfer Register