



**Waste Transfer and Recycling Facility
Forge Hill, Kinsale Road,
Cork.**

**Annual Environmental Report
January to December 2008**

EPA Ref. No:	W0173-1
---------------------	----------------

Environmental Protection Agency
Iniscarra, Co.Cork.
Telephone: 021 - 4875540 Fax: 021 - 4875545

VEOLIA ENVIRONMENTAL SERVICES (IRELAND) LTD
WASTE TRANSFER AND RECYCLING FACILITY
ANNUAL ENVIRONMENTAL REPORT

January to December 2008

Prepared by:-

Pearse Moroney
National Environment Manager

March 2009

TABLE OF CONTENTS

	PAGE
1 INTRODUCTION	3
VEOLIA ENVIRONMENTAL SERVICES ENVIRONMENTAL POLICY	4
2 DESCRIPTION OF THE SITE	5
3 MONITORING AND EMISSIONS SUMMARY.....	7
3.1. EMISSIONS TO SURFACE WATER	7
3.2. EMISSIONS TO FOUL SEWER	7
3.3. NOISE	9
3.4. DUST MONITORING	9
3.5. GROUNDWATER MONITORING.....	10
3.5. INTERPRETATION OF MONITORING RESULTS	10
3.5.1. <i>Emissions to Surface Water</i>	10
3.5.2. <i>Noise</i>	11
3.5.3. <i>Dust Deposition</i>	11
3.5.4. <i>Groundwater</i>	11
4 SITE DEVELOPMENT WORKS.....	12
5. WASTE RECEIVED BY AND CONSIGNED FROM THE FACILITY.....	13
5.1 WASTE HANDLED BY VEOLIA ENVIRONMENTAL SERVICES IN THE CORK REGION.....	13
5.1.1 <i>Waste Composition</i>	13
5.2 UNACCEPTABLE WASTE	14
6 ENVIRONMENTAL INCIDENTS AND COMPLAINTS	15
6.1 INCIDENTS SUMMARY	15
6.2 COMPLAINTS SUMMARY.....	15
7 ENVIRONMENTAL MANAGEMENT PLAN.....	16
7.1 REPORT.....	16
7.1.1 <i>Schedule of Environmental Objectives and Targets</i>	16
<i>Air Emissions OBT.4.1</i>	17
<i>Water Emissions OBT.4.2</i>	18
<i>SITE INFRASTRUCTURE OBT 4.3</i>	19
<i>Site Management OBT.4.4</i>	20
<i>Management of Waste Licence OBT.4.5</i>	21
7.2 WASTE TRANSFER AND RECYCLING STATION OPERATING PROCEDURE DOCUMENTS	23
7.2.1 <i>Standard Operating Procedures</i>	23
7.2.2 <i>Emergency Response Procedures</i>	23
7.3 MANAGEMENT AND STAFFING STRUCTURE.....	24
7.5 FINANCIAL PROVISIONS.....	26
8 TANK AND BUND TESTING	27
9 RESOURCE CONSUMPTION SUMMARY	28
10. REPORT ON PUBLIC INFORMATION PROGRAMME	29

1 INTRODUCTION

Veolia Environmental Services (Ireland) Ltd., (Veolia) hold a Waste Licence (Reg. No. W0173-1) – issued 9th September 2003 - to operate a Waste Transfer and Recycling Facility at Forge Hill, Kinsale Road, Cork. In accordance with the requirements of Condition 11.6 of the Waste Licence, an Annual Environmental Report (AER) for the facility must be submitted to the Environmental Protection Agency (EPA).

This is the 7th AER, covering the reporting period from January to December 2008.

The facility is located at:

Veolia Environmental Services (Ireland) Ltd,
Waste Transfer and Recycling Facility,
Forge Hill,
Kinsale Road,
Cork.

Tel. (021) 4328028

Fax: (021) 4328029

National Grid co-ordinates for the location of the facility are: E1669, N0687

Veolia Environmental Services Ltd. - Environmental Policy

Veolia Environmental Services (Ireland) Limited is fully committed to the operation of its facilities to the highest environmental standards and fully supports and adheres to that policy.

It is the policy of Veolia Environmental Services (Ireland) Limited to protect the local environment and to minimise the impact of the operation on the environment. To achieve this objective it is committed to:

- Adhering to all relevant environmental legislation and relevant statutory obligations that relate to its activities both on and off site.
- Ensuring that all operations carried out by the company are done in a manner which ensures that environmental protection is taken into account.
- Providing and maintaining site facilities that are designed, constructed, operated and maintained to encompass the principles of good environmental practice.
- Striving to achieve a continuous improvement in efficiency of operations and environmental performance.
- Striving to minimise the quantity of waste disposed of at landfill and increasing the amount of material recycled / recovered.
- Providing environmental information to the community and responding positively to queries or complaints.
- Providing adequate training to all employees on environmental awareness and resource management.

2 DESCRIPTION OF THE SITE

The Waste Transfer and Recycling facility is located at Forge Hill, Kinsale Road, Cork within an area zoned for industrial development. The site location plan is shown in Drawing B.2.1. The facility is surrounded by industrial developments.

Waste handling activities at the facility consist of accepting and bulk loading of commercial, industrial and municipal waste for transfer to a number of approved landfills in Cork. In addition, recyclable waste (cardboard, timber, plastic and metal) are recovered from the waste streams and sent to various recycling companies. The main activity on-site is considered to be the bulk loading and transfer of waste and recyclables.

The licensed waste handling activities, permitted under the Third and Fourth Schedule of the Waste Management Act (1996), in the Waste Licence (173-1) are as detailed below;

Third Schedule, Class 12. Repackaging prior to submission to any activity referred to in a preceding paragraph of this Schedule.

Third Schedule, Class 13. Storage prior to submission to any activity referred to in a preceding paragraph of this Schedule, other than temporary storage, pending collection, on the premises where the waste concerned is produced.

Third Schedule, Class 11. Blending or mixture prior to submission to any activity referred to in a preceding paragraph of this schedule.

Fourth Schedule, Class 2. Recycling or reclamation of organic substances (including composting and other biological transformation processes) which are not used as solvents.

Fourth Schedule, Class 3. Recycling or reclamation of metals and metal compounds.

Fourth Schedule, Class 4. Recycling or reclamation of other inorganic materials.

Fourth Schedule, Class 12. Exchange of waste for submission to any activity referred to in a preceding paragraph of this schedule.

Fourth Schedule, Class 13. Storage of waste intended for submission to any activity referred to in a preceding paragraph of this Schedule, other than temporary storage, pending collection, on the premises where such waste is produced.

Local environmental conditions do not significantly influence the facility. In 2008 the annual rate of precipitation in the area was 1341mm. The dominant wind direction fluctuates between North Westerly to South Westerly.

There are 38 (including drivers) people directly employed on a full-time basis at the facility.

3 MONITORING AND EMISSIONS SUMMARY

Environmental monitoring results for the reporting period are outlined in the following sections. An interpretation of the results and impacts on the environment are also presented. A site plan showing the position of each monitoring location is included in the Appendix.

3.1. Emissions to Surface Water

Site emissions to surface water are addressed in Condition 6.4 and Schedule D.4 of the Waste Licence. The Licence requires that emissions to surface water be measured on a quarterly basis with the exception of heavy metals being measured on a bi-annual basis. The samples are analysed for the parameters indicated in the licence. The samples are taken by Veolia Environmental Services personnel and the analysis was carried out by Consult-Us Ltd., Glanmire Industrial Estate, Glanmire, and Environmental Laboratory Services, Blackrock Co. Cork.

A summary of the results is given in Table 3.1 below.

Table 3.1 Emissions to Surface Water

	Spec	Mar 08 mg/l	Oct 08 mg/l
SS	60mg/l	167	<1
FOG		<10	<1
BOD	25mg/l	390	<2
TPH		1.79	.054
Ammonia-cal Nitrogen		20.4	1
Mineral Oils	5mg/l	1.14	
pH			
Heavy metals		1.65	<1

3.2. Emissions to Foul Sewer

Site emissions to foul water are addressed in Condition 6.9 and Schedule C.4 of Amendment A to Waste Licence no W0173-01. The Licence requires that emissions to surface water be measured in accordance with D.6. The samples are analysed for the parameters indicated in the licence. The samples are taken by Veolia Environmental Services personnel and the analysis was carried out by Consult-Us Ltd., Glanmire Industrial Estate, and Environmental Laboratory Services, Blackrock Co. Cork.

Table 3.2 Emissions to Foul water (mg/l)

	COD	SS	FOG	BOD	Detergents	VOC	Sulphates	Mineral Oil	Hydrocarbons	Heavy Metals
Spec	4000	500	40	2000	10	1	750	5	5	1
10/3	201	33								0.15
13/3	792	132								
20/3	926	150	<10	605	.08	<1	9			
26/3	4051	133		2300						
11/4	136	29								
18/4	227	56								
23/4	541	124								
1/5	824	129								
8/5	575	114								
16/5	360	54								
22/5	72	18	<10	24	.105	<1	29	.36	.652	0.65
27/5	62	291								
5/6	314	216								
10/6	110	26								
25/6	3691	357	45	2625						
2/07	74	41	<10	56	.098	<1	50	.190	.309	.5
8/7	285	340								
15/7	47	34								
22/7	361	180								
29/7	104	58								
8/08	64	139								
11/8	115	27	<10	60						
18/8	166	242								
26/8	66	38								
1/9	129	50	<10	38						
Wk37	19	1								
Wk38	60	57								
Wk39	546	76								
Wk40	272	150								
Wk41	94	41								
Wk42	70	114	<1	<25	.22	<1	31.3			
Wk43	13	49								
Wk44	68	58								
Wk45	18	20	3	5						
Wk46	24	34								
Wk47	27	36								
Wk48	23	38								
Wk49	50	9	<1	4						
Wk50	66	76								
Wk51	46	21								
Wk52	627	30								

3.3. Noise

As required in Schedule D.3 of Waste Licence 173-1, noise monitoring was undertaken on the 19th December 2008. Ambient monitoring results are presented in Table 3.3. Octave band analysis was also carried out to determine whether tonal or impulsive noise components existed as a result of the on-site activities.

Table 3.3 Noise Monitoring Results Summary

Location	Point Location Ref.	Sound Pressure dB(A)					
		L(A)EQ		L(A)10		L(A)90	
		Daytime	Night-time	Daytime	Night-time	Daytime	Night-time
B1	Boundary	56	50	58	52	53	41
B2	Boundary	65	61	70	66	55	50
B3	Boundary	66	49	64	58	55	46
B4	Boundary	59	52	61	55	54	47
NS1	Nearest NSL ^{Note 1}	76	67	78	67	58	43

Note 1: Nearest Noise Sensitive Location.

The Emission Limit Values specified in the Waste Licence 173-1, Schedule C.1 were 55 dB (A) for daytime and 45 dB (A) for night-time activities.

Audible tonal component were detected for a number of frequencies at B2 and NS1

3.4. Dust Monitoring

Two dust monitoring surveys were carried out during the period January to December 2008 in accordance with Schedule D.2 of Waste Licence 173-1. Results of this monitoring are presented in Table 3.4.

Table 3.4 Dust Monitoring Results

Date	Results (mg/m ² /day)				Waste Licence 173-1 (mg/m ² /day)
	ST1	ST2	ST3	ST4	
April	139.3	ND ^{note 1}	263.1	212.9	350
Nov/Dec	95.2	78.9	111.1	265.5	350

Note 1: Dust deposition was not determined at position ST2 in April 2008 as it was located within the construction site.

3.5 Groundwater Monitoring

Groundwater monitoring was carried twice at location GWM1, during the reporting period January to December 2008, in compliance with the conditions of licence W0173-1. Results of the monitoring are detailed in Table 3.5.

No elevated levels were detected during monitoring.

Table 3.5 Groundwater Monitoring Results

Date	Total Petroleum Hydrocarbons mg/L	Ammoniacal Nitrogen mg/L	Heavy Metals mg/L	Visual Inspection
Apr 08	<.05	<.1	0.13	Orange brown
Nov 08	.120	.06	<<1	No comment

3.6 Interpretation of Monitoring Results

3.6.1. Emissions to Surface Water

In Waste Licence 173-1 specific trigger levels and emission limit values are set in Condition 6.4 and Schedule C.3. The results indicate that the trigger level of 25mg/l for BOD and 60mg/l for SS was exceeded in March 2008. The water was not released to surface water but instead was discharged through the foul sewer.

3.6.2. Emissions to Surface Water

Emissions limit values are set in Schedule C.4 of Amendment A to Waste Licence 173-01. The results indicate that the BOD limit was exceeded in June 2008. This result was noted in our correspondence reference W0173-L50 to the Agency

3.6.3. Noise

The results of the noise measurements carried out show that the site is located in a high noise environment.

The environmental noise assessment carried out at the site examined the background noise in the region and the noise generated by the waste management operations on the site. The following conclusions have been reached:

- The site is located in a high noise area, where traffic noise dominates.
- The nearest noise sensitive location (NS1) is subject to significant traffic noise passing on the Forge Hill road and this overrides any noise impact from the facility.
- The measurement locations B2 and B3 are most affected by on-site activity mainly trucks passing through the yard.

In general, the noise emissions from the site are consistent with the general noise regime in the area. During the daytime, there were a diffuse range of noise sources from the industrial area around the site particularly from the high volumes of traffic in the area. The main noise source on-site was from truck movements in the yard and construction noise related to the office development. No noise was audible from the waste transfer building. The dominant noise source in the locality, however, was from traffic on the adjacent Forge Hill road.

Results of noise monitoring presented above indicate that the night time noise levels determined at four of the five monitoring positions were found to be elevated above the permitted level of 45dB(A). However, there were no operations at the facility during the monitoring period and hence the exceedences recorded were not as a result of operations at the Veolia Environmental Services (Ireland) Facility. The main noise sources during this monitoring period were passing traffic from Forge Hill and South Link Road.

3.6.4. Dust Deposition

Results indicate that the dust deposition levels were not exceeded during either monitoring period.

3.6.5. Groundwater

Results indicate that there were no elevated levels detected during either monitoring event. There was no evidence of hydrocarbon or heavy metal contamination on either occasion.

4 SITE DEVELOPMENT WORKS

The site development works carried out during the reporting period are summarised in Table 4.1 below:

Table 4.1. Site Development Works during Reporting Year

<i>Licence Requirement</i>	<i>Status</i>
Condition 3.6.3 Provision of impermeable hardstanding at the facility entrance area, at the car parking area, where vehicle movement takes place and at the waste handling and storage area	All areas completed in 2008.
Condition 3.9 Provision of Weighbridge and a Wheelcleaner	Two weighbridges have now been provided. An in-situ wheelcleaner is now available..
Condition 3.11.2 Installation of foul water monitoring point with composite sampler and flow meter, etc.	Installed and commissioned March 2008
Condition 3.15.3 Test integrity and water tightness of all underground pipes	Completed

The site achieved certification to the following management systems in December 2008:

ISO 14001:2004

ISO 9001:2000

OSHAS18001

5. WASTE RECEIVED BY AND CONSIGNED FROM THE FACILITY

5.1 Waste Handled by Veolia Environmental Services, Cork

5.1.1 Waste Composition

The majority of the waste accepted at the Waste Transfer and Recycling Facility is Commercial and Industrial Waste collected by Veolia Environmental Services and its subcontractors. Less than 1% of transferred waste is derived from domestic premises (mainly apartments). Minor quantities of Construction and Demolition waste are accepted on-site. All waste is non-hazardous. The waste received at the facility during the reporting period (January to December) amounted to approximately 38,001 tonnes, which is well within the limit of 82,000 tonnes per annum set in Waste Licence W0173-1. The relative quantities of waste accepted into the facility and during the reporting period are summarised below in Table 5.1.

Waste collected and brought to the Waste Transfer and Recycling Facility may be disposed of in licensed approved Landfills. Large quantities of recyclable materials (principally timber, plastic, paper and cardboard) are sent to various recycling facilities for further processing. The relative quantities of waste removed from the facility for disposal / recycling during the reporting period are also summarised in Table 5.1.

Table 5.1 Waste Types –accepted & removed

Waste	Weight Accepted Tonnes	Weight Removed Tonnes
Mixed Municipal	15610	15100
Mixed C&D	70	227
Plastic	153	747
Cardboard	3582	10317
Glass	335	323
Metal	100	80
Timber	240	497
Soft packaging	17910	10418
Total	38001	37719

5.2 Unacceptable Waste

Throughout 2008 there were some items of waste that was deemed to be unacceptable and/or hazardous according to the Waste Acceptance Register which would have been removed to the Waste Quarantine Area prior to removal off-site for correct handling and/or proper disposal. The bulk of this was butane gas bottles, some carbon dioxide and oxygen bottles, fluorescent tubes and car batteries. The batteries are sent to Returnabatt, the gas bottles were returned to various suppliers.

6 ENVIRONMENTAL INCIDENTS AND COMPLAINTS

6.1 Incidents Summary

Condition 11.2 of Waste Licences 173-1 requires that the licensee shall make written records of the environmental incidents. A total of 2 incidents were recorded during the reporting period is presented in Table 6.1.

Table 6.1 Recordable Incidents during the Reporting Year

<i>Date</i>	<i>Nature and ELV Exceedance</i>	<i>Cause</i>
March 08	SS and BOD for surface water sample exceeds trigger limits	NA
June 08	BOD for foul water exceeds ELV	

6.2 Complaints Summary

All complaints received at the facility are acknowledged, replied to verbally and/ or in writing and recorded in the Complaints file on-site. No complaints were received for the reporting period January to December 2008.

7 ENVIRONMENTAL MANAGEMENT PLAN

7.1 Report

In compliance with Condition 2.3 of the Waste Licence and for the implementation of ISO14001 an Environmental Management System was established (EMS) in 2008. The EMS is to be reviewed and updated on an annual basis and will be submitted to the Agency

Site operational procedures are described in the EMP and the management and staffing structure has been updated to reflect current appointments at the facility. The report summarises the procedure by which members of the public can obtain information, at all reasonable times, concerning the environmental performance of the facility.

7.1.1 Schedule of Environmental Objectives and Targets

A detailed Schedule of the Environmental Objectives and Targets for the forthcoming years was submitted with the AER in 2008 and a summary of their status is provided in Table 7.1..

The overall responsibility for achieving these objectives and targets lies with the Managing Director of VEOLIA ENVIRONMENTAL SERVICES (Ireland) Ltd. Items referred to within these objectives are site specific and are the combined responsibility of the General Manager, Regional Operations Manager, Depot Manager and the Environmental Officer.

Environmental Objectives and Targets have also been derived during the ISO14001 implementation process. The majority of these have been achieved, however those which are not yet completed are shown in Table 7.2

Table 7.1. Environmental Objectives and Targets proposed by VEOLIA ENVIRONMENTAL SERVICES (Ireland) Limited

Air Emissions OBT.4.1

Activity/ Emission	Objective	Target	Target Date	Person Responsible	Status
Dust	To reduce any dust being generated from the site.	Construct and maintain waste transfer and recycling building. Cover remaining hardcore areas of the facility.	Completed September 2007	Regional Manager/Operations Manager/	Completed
		Cease transfer of waste using the mobile transfer unit.	Once construction is fully completed by August 2008, the waste transfer yard will be totally concreted.	Regional Manager/Operations manager	Complete
Litter	Minimize windblown litter at the facility and its surrounds.	Cease utilising mobile transfer unit.	Ceased operation in September 2007	Regional Manager/Operations Manager	
Odours	Eliminate unpleasant odours originating at the facility and avoid odour related complaints.	Cease utilising mobile transfer unit. and commence operations indoors.	New waste transfer building has been operating since the end of September 2007	Regional Manager/Operations Manager	

Water Emissions

OBT.4.2

Activity/ Emission	Objective	Target	Target Date	Person Responsible	Status
Surface Water Emissions	Improve Surface Water Emissions from the Facility	Completion of SW drainage network and completion of concreting/tarmacing of yard.	August 2008	Regional Manager/ Operations Manager	Completed
Foul Water Emissions	Discharge foul water to the public sewerage system.	Acquire ELV'S from Cork County Council	Agreed with CCC in November 2007	Environmental Manager	Complete
		Technical amendment to licence by Agency	Received January 2008	Environmental Manager	Complete
		Sampler and flow meter to be acquired	By end of March 2008	Environmental Manager	Complete
		Install FW monitoring point.	By end of March 2008	Environmental Manager	Complete
		Install and set up monitoring equipment	By end of March 2008	Environmental Manager	Complete

Site Infrastructure OBT 4.3

Activity/ Emission	Objective	Target	Target Date	Person(s) Responsible	Status
Facility Infrastructure	Complete upgrading of the transfer and recycling facility.	Complete concreting of hardcore areas of facility.	December 2008	Operations Manager/Regional Manager	All complete
		Construct new transfer building.	Completed & Operational since the end of September 2007	Operations Manager/Regional Manager	
		Construct new recycling building	August 2008	Operations Manager/Regional Manager	
		Complete FS and SW drainage networks	December 2008	Operations Manager/	

Site Management

OBT.4.4

Activity/ Emission	Objective	Target	Target Date	Person Responsible	Status
Environmental Management System	Improve the environmental management system	To obtain ISO 14001 accreditation for environmental management system Review SOP'S.	November 2008 In 2007, the following procedures were reviewed: Communication, Waste Acceptance, Corrective Action, Training, Emergency Response, Odour audit, Vermin Inspection. The process will continue throughout 2008.	Regional Manager/Depot Manager/ Environmental Manager Environmental Manager	Accreditation Certified in December 2008 Complete as part of ISO requirement
Recycling	Increase quantity of material recycling at the facility	Have new recycling building operational Explore other outlets for recycling	December 2008	Ops Manager/ Regional Manager	Significant improvement in recovery/recycling figures for 2008
Housekeeping	Improve general housekeeping in Facility	Concrete remaining areas in yard Cease use of MTU	December 2008	Ops manager	Ongoing

Management of Waste Licence

OBT.4.5

Activity/ Emission	Objective	Target	Target Date	Person Responsible
Waste Licence	Training	Environmental awareness training Continue with relevant environmental training.	All yard operatives and drivers received this training in July & August 2007	Environment Manager

Table 7.2 Objectives for 2009

Activity	Objective	Target	Target Date	Person(s) Responsible	Status
Energy usage	Continue the promotion of energy efficiencies.	Monitor changes resulting from : <ul style="list-style-type: none"> • Low energy lighting • New climate controls Conduct energy audit	December 2009	Ops Manager	
Water usage	Identify opportunities for reducing water usage	<ul style="list-style-type: none"> • Track usage • Recover/reuse water from storm water tank & other sources 	Dec 2009	Ops Manager	
Office recycling	Minimise waste output from office	Generate a measurable reduction <ul style="list-style-type: none"> • Print both sides • Use recycled paper for drafts • Paperless office 	Dec 2009	Ops Manager	
EMS	Maintain regulatory compliance(WL & WCP)	Target is 50% reduction on non compliances year on year	Dec 2009	Env' Man	

7.2 Waste Transfer and Recycling Station Operating Procedure Documents

Documented operating procedures for the facility, which are described in detail in the Environmental Management System are sub-divided as follows:-

- Standard Operating Procedures
- Emergency Response Procedure

A brief summary of these is provided below.

7.2.1 *Standard Operating Procedures*

Standard Operating Procedures have been developed for each of the routine operations conducted at the facility. The purpose of these is to ensure that routine tasks are carried out in the same manner each time they are undertaken, irrespective of the operator. Their implementation will encourage quality as well as safe work practices. Regard is also had for the site specific Safety Statement when carrying out any operations at the facility.

The routine operations identified are as follows:

- Delivery and handling of waste in the waste reception area.
- Loading of Waste into transfer trailers
- Housekeeping
- Environmental Monitoring

7.2.2 *Emergency Response Procedures*

Condition 9.2 of the Waste Licence requires that a set of Emergency Response Procedures (ERP) be implemented at the facility. A document describing these procedures was submitted to the Agency in June 2007. This procedure is updated as required by the facility. Emergencies have been defined as unexpected events, which prohibit the transfer operation or reduce transferring capacity, or any occurrence resulting in non-compliance with the conditions of the Waste Licence. Potential emergencies at the facility can be grouped under the following headings:-

- Unable to load waste to transfer trailers
- Unable to transfer waste to Landfill and/or Waste Baling Station
- Threats to worker health and safety
- Threats to the environment

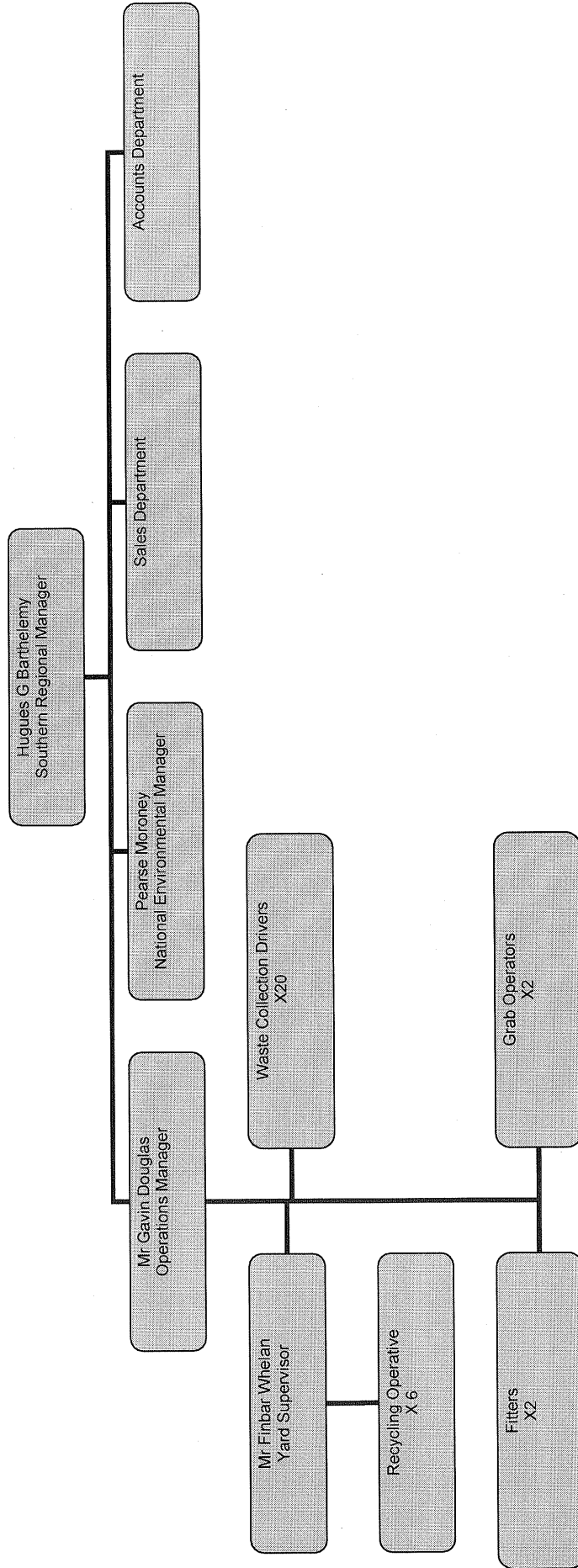
The ERP document, which is maintained in the Operating Manager's office, contains detailed procedures and a list of emergency contact numbers to be used in the event of an emergency.

7.3 Management and Staffing Structure

The organisational structure for the facility is shown in Figure 7.1. Each of the positions identified in Figure 7.1 are discussed in detail in Section 10 of the Environmental Management Plan for the reporting year. Details of the relevant experience and qualifications for each person named, as well as arrangements for absence in the case of annual leave, illness and other reasons, are maintained in the offices of Veolia Environmental Services Ltd. and have previously been forwarded to the Agency as required by Condition 2.2.1.

A file consisting of training records for each employee is also maintained in the offices of Veolia Environmental Services Ltd..

Figure 7.1 Organisational Structure and Staffing Levels for the site



7.4 Report on Financial Provisions

An Environmental Liabilities Risk Assessment was forwarded to the Agency on the 26th July 2004.

This report recommended that the installation of a preliminary environmental liabilities pollution cover of €187,950 (excluding VAT) in the form of bond, financial allocation or an insurance premium would guarantee that potential liabilities arising from:

- Emergency situations occurring during operation of the site
- Closure and decommissioning of the site

are financially provided for. This was reconfirmed to the Agency in October 2008.

8 TANK AND BUND TESTING

Condition 3.12.5 of the Waste Licence 173-1 required that tank and bund testing be carried out at least once every three years. There were no such testing required in 2008. The next due date is May 2009.

9 RESOURCE CONSUMPTION SUMMARY

Resources consumed at the facility include electricity, diesel fuel, hydraulic oil, steel wire, water, and cleaning agents/disinfectants/odour control solutions. The major consumers of energy at the facility are as follows:

- Baling and ancillary equipment (Electricity, Hydraulic Oil)
- Road Fleet for waste transfer (Diesel).
- Odour neutralising solution

Energy and resource consumption at the facility can be summarised as follows:

● Diesel Fuel	400K litres
● Hydraulic Oil	1,000 Litres
● Engine Oil	150 Litres
● Electricity	240,000 KW/hr
● Odour Neutraliser	500 Litres

10. REPORT ON PUBLIC INFORMATION PROGRAMME

A programme for public information is in place. During the reporting period there were no requests from members of the public to inspect any of the records and files listed in the submission, only requests from commercial customers.

The list of documents available for inspection is as follows:

- Training Records
- Incident Reports
- Communication Records
- Environmental Monitoring Results
- Complaints Register
- Non-Compliance Records
- Corrective Action Records
- Unacceptable Waste Records
- Pest/Vermin Control Records
- Maintenance Records for all machinery
- Daily transactions for incoming and outgoing vehicles
- Waste Licence
- Waste Licences of Facilities receiving Waste from Veolia Environmental Services
- Veolia Environmental Services Safety Statement
- Communications Folder
- Environmental Management Plan
- Storm and Foul Sewer line Inspection Reports
- Emergency Response Procedures
- Facility Inspection Reports
- Nuisance Inspection Records
- Environmental Procedures
- Tonnage Records
- Recycling Information
- Material Safety Data Sheets

Members of the public who wish to inspect these files may do so at any reasonable time by making an appointment with the Operations Manager using the telephone number posted on the main facility entrance sign erected in accordance with Condition 3.3.

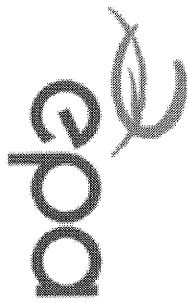
The names of the appropriate personnel are as follows:

Mr. Gavin Douglas

Operations Manager

Pearse Moroney

National Environment Manager



Environmental Protection Agency

| PRTIR#: W0173 | Facility Name: Veolia Environmental Services (Ireland) Limited |
Filename: W0173_2008(1).xls | Return Year: 2008 |

3/10/2009 14:26

AER Returns Worksheet

Version 1.1.03

REFERENCE YEAR 2008

1. FACILITY IDENTIFICATION

Parent Company Name	Veolia Environmental Services (Ireland) Limited
Facility Name	Veolia Environmental Services (Ireland) Limited
PRTIR Identification Number	W0173
Licence Number	W0173-01

Waste or IPPC Classes of Activity

No.	class_name
3.12	Repackaging prior to submission to any activity referred to in a preceding paragraph of this Schedule.
3.13	Storage prior to submission to any activity referred to in a preceding paragraph of this Schedule, other than temporary storage, pending collection, on the premises where the waste concerned is produced. Recycling or reclamation of organic substances which are not used as solvents (including composting and other biological transformation processes).
4.2	Recycling or reclamation of metals and metal compounds.
4.3	Recycling or reclamation of other inorganic materials.
4.4	Exchange of waste for submission to any activity referred to in a preceding paragraph of this Schedule.
4.12	Storage of waste intended for submission to any activity referred to in a preceding paragraph of this Schedule, other than temporary storage, pending collection, on the premises where such waste is produced.
4.13	Blending or mixture prior to submission to any activity referred to in a preceding paragraph of this Schedule.
3.11	

Address 1	Forge Hill
Address 2	Kinsale Road
Address 3	Cork
Address 4	
Country	Ireland
Coordinates of Location	0.000
River Basin District	IESW
NACE Code	382
Main Economic Activity	Waste treatment and disposal
AER Returns Contact Name	Pearse Moroney (W0173)
AER Returns Contact Email Address	pearse.moroney@veolia.ie
AER Returns Contact Position	National Environmental Manager
AER Returns Contact Telephone Number	01 4136500
AER Returns Contact Mobile Phone Number	087 6076495
AER Returns Contact Fax Number	
Production Volume	0.0
Production Volume Units	
Number of Installations	0
Number of Operating Hours in Year	0
Number of Employees	0
User Feedback/Comments	
Web Address	

2. PRTR CLASS ACTIVITIES

Activity Number	Activity Name
5c	Installations for the disposal of non-hazardous waste

3. SOLVENTS REGULATIONS (S.I. No. 543 of 2002)

Have you been granted an exemption?	Is it applicable?	No
If applicable which activity class applies (as per Schedule 2 of the regulations)?		
Is the reduction scheme compliance route being used?		

4.1 RELEASES TO AIR

11/19/2019 10:53:51 AM - User: Administrator - Path: \\server1\home\11\reports\4.1.1 - Release Year: 2018

11/19/2019 10:53:51 AM

SECTION A : SECTOR SPECIFIC PRRR POLLUTANTS

RELEASES TO AIR		METHOD		QUANTITY			
POLLUTANT	Name	Method Used	Description of Description	Emission Point 1	T Total KG/Year	A (Accidental) KG/Year	F (Fugitive) KG/Year
NO Annex I		M/C/E	Method Code	0.0	0.0	0.0	0.0

* Select a row by double-clicking on the Pollutant Name (Column B) then click the delete button

SECTION B : REMAINING PRRR POLLUTANTS

RELEASES TO AIR		METHOD		QUANTITY			
POLLUTANT	Name	Method Used	Description of Description	Emission Point 1	T Total KG/Year	A (Accidental) KG/Year	F (Fugitive) KG/Year
NO Annex II		M/C/E	Method Code	0.0	0.0	0.0	0.0

* Select a row by double-clicking on the Pollutant Name (Column B) then click the delete button

SECTION C : REMAINING POLLUTANT EMISSIONS (As required by your License)

RELEASES TO AIR		METHOD		QUANTITY			
POLLUTANT	Name	Method Used	Description of Description	Emission Point 1	T Total KG/Year	A (Accidental) KG/Year	F (Fugitive) KG/Year
Disal		M	PER	6900.0	690.0	0.0	0.0

* Select a row by double-clicking on the Pollutant Name (Column B) then click the delete button

Additional Data Requested from Landfill operators

For the purposes of the National Inventory on Greenhouse Gases, landfill operators are requested to provide summary data on landfill gas (Methane) flared or utilised on their facilities to accompany the figures for total methane generated. Operators should only report their Net methane (CH₄) emission to the environment under 'Total' Kg/Yr for Section A; Sector specific PRRR pollutants above. Please complete the table below:

Landfill:	Veolia Environmental Services (Ireland) Limited		Method Used		Facility Total Capacity: m3 per hour
	T Total Kg/Year	M/C/E	Method Code	Description of Description	
Total estimated methane generation (as per site model)	0.0				0.0 (Total Filling Capacity)
Methane utilised in engines	0.0				0.0 (Total Utilising Capacity)
Net methane emission (as reported in Section A above)	0.0				N/A

4.2 RELEASES TO WATERS

Facility Name: Verde Environmental Services (Pfund) | Release Year: 2019

14:03:09 14/03

SECTION A : SECTOR SPECIFIC PRTS POLLUTANTS

Data on ambient monitoring of storm/ surface water or groundwater, conducted as part of your license requirements, should NOT be submitted under AER / PRTs Reporting as this only concerns Releases from your facility

No. Annex II	POLLUTANT	Name	M/C/E	Method Code	Method Used Designation or Description	Emission Point 1	QUANTITY		
							T (Total) KG/Year	A (Accidental) KG/Year	F (Fugitive) KG/Year
							0.0	0.0	0.0

* Select a row by double-clicking on the Pollutant Name (Column B) then click the delete button

SECTION B : REMAINING PRTS POLLUTANTS

No. Annex II	POLLUTANT	Name	M/C/E	Method Code	Method Used Designation or Description	Emission Point 1	QUANTITY		
							T (Total) KG/Year	A (Accidental) KG/Year	F (Fugitive) KG/Year
							0.0	0.0	0.0

* Select a row by double-clicking on the Pollutant Name (Column B) then click the delete button

SECTION C : REMAINING POLLUTANT EMISSIONS (as required in your License)

Pollutant No.	POLLUTANT	Name	M/C/E	Method Code	Method Used Designation or Description	Emission Point 1	QUANTITY		
							T (Total) KG/Year	A (Accidental) KG/Year	F (Fugitive) KG/Year
							0.0	0.0	0.0

* Select a row by double-clicking on the Pollutant Name (Column B) then click the delete button

4.3 RELEASES TO WASTEWATER OR SEWER

SECTION A : PRTS POLLUTANTS

OFFSITE TRANSFER OF POLLUTANTS DESTINED FOR WASTE-WATER TREATMENT OR SEWER		METHOD		QUANTITY				
No. Annex II	Name	M/C/E	Method Code	Designation or Description	Emission Point 1	T (Total) KG/Year	A (Accidental) KG/Year	F (Fugitive) KG/Year
						0.0	0.0	0.0

* Select a row by double-clicking on the Pollutant Name (Column B) then click the delete button

SECTION B : REMAINING POLLUTANT EMISSIONS (as required in your license)
OFFSITE TRANSFER OF POLLUTANTS DESTINED FOR WASTE-WATER TREATMENT OR SEWER

Pollutant No.	Name	M/C/E	Method Code	METHOD	Emission Point 1	QUANTITY			
						T (Total) KG/Year	A (Accidental) KG/Year	F (Fugitive) KG/Year	
297	Validable organic compounds (as TOC)	M	EW 25	Designation or Description: GC/MS averaged over all results for 2009 Croset Felt/A colorimetry Anionic surfactants as MBAS		0.0	0.0	0.0	0.0
306	COD	M	EW 094			1964.4	1964.4	0.0	0.0
308	Detergents (as MBAS)	M	APHA 5540C			0.65	0.65	0.0	0.0
314	Fats, Oils and Greases	M	APHA 5520B	Extraction and Gravimetric		56.41	56.41	0.0	0.0
324	Mineral oils	M	Lab	Extraction GC/FID		1.41	1.41	0.0	0.0
366	Hydrocarbons	M	Lab	GC/FID		2.42	2.42	0.0	0.0
343	Sulphate	M	EW 016	Autor analyser		161.0	161.0	0.0	0.0
240	Suspended Solids	M	EW 013	Spectrophotometry		91.0	91.0	0.0	0.0
303	BOD	M	EW 001	Gravimetro analysis averaged over all results for 2008		2891.0	2891.0	0.0	0.0

* Select a row by double-clicking on the Pollutant Name (Column B) then click the delete button

4.4 RELEASES TO LAND

SECTION A : PTRR POLLUTANTS

RELEASES TO LAND	
POLLUTANT	
No. Annex II	Name

* Select a row by double-clicking on the Pollutant Name (Column B

SECTION B : REMAINING POLLUTANT EMISSIONS (as required in your Licence)

RELEASES TO LAND	
POLLUTANT	
Pollutant No.	Name

* Select a row by double-clicking on the Pollutant Name (Column B

) then click the delete button

M/C/E	Method Code	Designation or Description	Emission Point 1
		Method Used	
METHOD			
			0.0

) then click the delete button

M/C/E	Method Code	Designation or Description	Emission Point 1
		Method Used	
METHOD			
			0.0

QUANTITY	
T (Total) KG/Year	0.0
A (Accidental) KG/Year	0.0

QUANTITY	
T (Total) KG/Year	0.0
A (Accidental) KG/Year	0.0

5. ONSITE TREATMENT & OFFSITE TRANSFERS OF WASTE

Project No: 1601731 Facility Name: Vehicle Washdown/Car Wash Services (Banded) Landfill Reference: 160173_2019611011 Dublin Year: 2020

16/03/2023 14:25
28

Transfer Destination	European Waste Code	Hazardous	Quantity T/Year	Description of Waste	Waste Treatment Operation	Method Used		Location of Treatment	Name and Licence / Permit No. of Recoverer / Disposer	Address of Recoverer / Disposer / Broker	Name and Address of Final Destination i.e. Final Recovery / Disposal Site (HAZARDOUS WASTE ONLY)	Licence / Permit No. of Final Destination i.e. Final Recovery / Disposal Site (HAZARDOUS WASTE ONLY)
						M/C/E	Method Used					
Within the Country	15 01 01	No	420.0	Cardboard	R13	M	Weighted	Onsite in Ireland	VES Limerick W0082-02	Dock Road Carrigarrad		
Within the Country	15 01 01	No	306.0	Cardboard	R13	M	Weighted	Onsite in Ireland	VES Waterford W017-703			
To Other Countries	15 01 01	No	1546.0	Cardboard	R13	M	Weighted	Abroad	Veolia Probertus A C N	France		
To Other Countries	15 01 01	No	430.0	Cardboard	R3	M	Weighted	Abroad	Parry&Evans	China		
To Other Countries	15 01 01	No	732.0	Cardboard	R3	M	Weighted	Abroad	Hamon	China		
To Other Countries	15 01 01	No	702.0	Cardboard	R3	M	Weighted	Abroad	Hamon	India		
To Other Countries	15 01 01	No	399.0	Cardboard	R3	M	Weighted	Abroad	Highlander	Indonesia		
To Other Countries	15 01 01	No	218.0	Cardboard	R3	M	Weighted	Abroad	Falander	UK		
To Other Countries	15 01 01	No	1162.0	Cardboard	R3	M	Weighted	Abroad	Peule	Holland		
To Other Countries	15 01 01	No	865.0	Cardboard	R3	M	Weighted	Abroad	Cardboard Comms	UK		
To Other Countries	15 01 01	No	644.0	Cardboard	R3	M	Weighted	Abroad	Cardboard Comms	China		
To Other Countries	15 01 01	No	929.0	Cardboard	R3	M	Weighted	Abroad	Sterling	China		
To Other Countries	15 01 01	No	1853.2	Cardboard	R3	M	Weighted	Abroad	Asian Eagle	China		
To Other Countries	15 01 02	No	64.0	Plastic	R3	M	Weighted	Abroad	Resch	UK		
To Other Countries	15 01 02	No	33.0	Plastic	R3	M	Weighted	Abroad	Thonadale	NI		
To Other Countries	15 01 02	No	298.2	Plastic	R3	M	Weighted	Abroad	Veolia Probertus	France		
To Other Countries	15 01 02	No	191.0	Plastic	R13	M	Weighted	Onsite in Ireland	CTO CKS1296/03	Kinsale Rd Cork		
Within the Country	15 01 03	No	308.85	Timber	R13	M	Weighted	Onsite in Ireland	KWD W0217-01	Killarney, Co Kerry		
Within the Country	15 01 06	No	534.7	Soft Mix	R13	M	Weighted	Onsite in Ireland	VES W0082-02	Dock Rd, Limerick		
Within the Country	15 01 06	No	333.2	glass	R13	M	Weighted	Onsite in Ireland	Tullagower Quarries	Clare		
Within the Country	17 02 02	No	52.3	plastic	R13	M	Weighted	Onsite in Ireland	B O Brian CKS437/07	Waterfall Co Cork		
Within the Country	17 02 03	No	210.0	C&D	R13	M	Weighted	Onsite in Ireland	JAW/cods CKS589/04	Cork		
Within the Country	17 04 07	No	27.7	Meal	R4	M	Weighted	Onsite in Ireland	CKS478/07	Cork		
Within the Country	20 03 01	No	14541.3	MMW	D1	M	Weighted	Onsite in Ireland	CCC Landfill W0086-2	Youghall Co Cork		
Within the Country	20 03 01	No	557.6	MMW	D1	M	Weighted	Onsite in Ireland	CCC Landfill W0123-2	Kinsale Rd Cork		
Within the Country	15 01 03	No	14.9	Timber	R3	M	Weighted	Onsite in Ireland	CHEP Pallets	Cork		
Within the Country	15 01 03	No	173.7	Timber	R3	M	Weighted	Onsite in Ireland	WRS Recycling	Cork		
Within the Country	15 01 03	No	17.0	C&D	R13	M	Weighted	Onsite in Ireland	Mallow Contracts W0266-1	Mallow Co Cork		
Within the Country	17 04 07	No	722	Metals	R4	M	Weighted	Onsite in Ireland	Cork Metals CKS 504/05	Cork		

Select a row by double-clicking the Description of Waste then click the status button