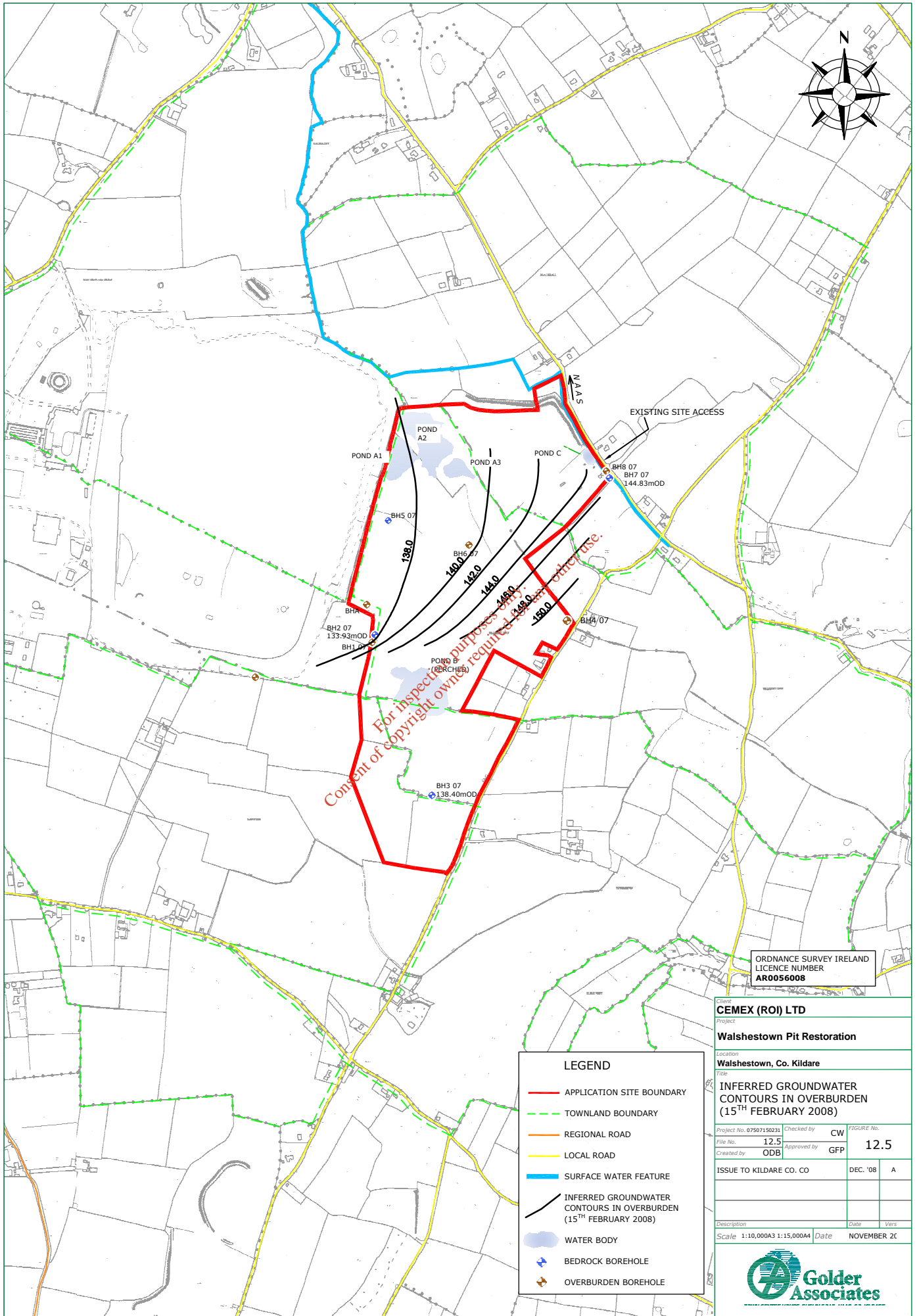


Legend


Aquifers of East Kildare

- Sg - Sand and Gravel Aquifer
- Pu - Poor aquifer - Bedrock which is generally unproductive
- PI- Bedrock which is generally unproductive

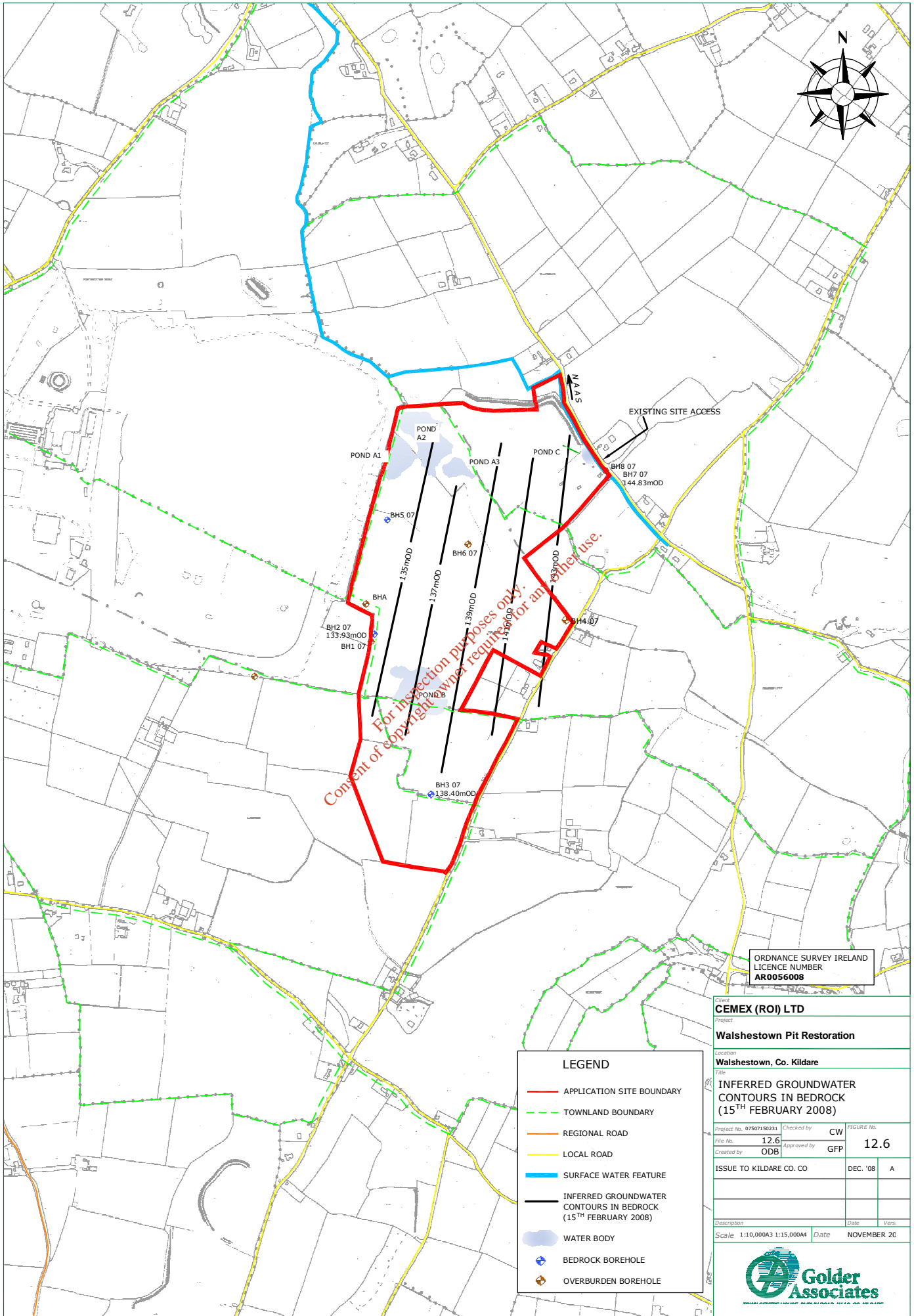
| | | | | | | | | |
|---|---|--|--|---|----------------------|--------------------|---|-------------------------------|
| <p>Golder Associates</p> <p>TOWN CENTRE HOUSE, DUBLIN ROAD, NAAS, CO. KILDARE TEL: 045 874411 - FAX: 045 874549 - www.golder.com</p> | <p>CEMEX (ROI) LTD</p> <p>Location: WALSHESTOWN, CO. KILDARE</p> <p>Project: WALSHESTOWN PIT RESTORATION</p> | <p>07507150231</p> <p>File Location: GIS PROJECTS\WALSHESTOWN\EIS 12.3</p> <p>ORDNANCE SURVEY OF IRELAND LICENCE NUMBER AR0056008</p> | <p>Created by: AS</p> <p>Checked by: PK</p> <p>Approved by: BB</p> | <p>Issue to: Kildare County Council</p> | <p>Date: Dec '08</p> | <p>Revision: A</p> | <p>Title: AQUIFER CLASSIFICATION</p> <p>Scale: 1:30,000 A4</p> | <p>Figure No. 12.4</p> |
|---|---|--|--|---|----------------------|--------------------|---|-------------------------------|



ORDNANCE SURVEY IRELAND
LICENCE NUMBER
AR0056008

| | | |
|---|--------------------|-------------|
| CEMEX (OI) LTD | | |
| Project Walshestown Pit Restoration | | |
| Location Walshestown, Co. Kildare | | |
| Title INFERRED GROUNDWATER CONTOURS IN OVERBURDEN (15TH FEBRUARY 2008) | | |
| Project No. 07507150231 | Checked by CW | FIGURE No. |
| File No. 12.5 | Approved by GFP | 12.5 |
| Created by ODB | | |
| ISSUE TO KILDARE CO. CO | DEC. '08 | A |
| Description | Date | Version |
| Scale 1:10,000A3 1:15,000A4 | Date | NOVEMBER 20 |
|  | | |

| LEGEND | |
|--|--|
| — | APPLICATION SITE BOUNDARY |
| - - - | TOWNLAND BOUNDARY |
| — | REGIONAL ROAD |
| — | LOCAL ROAD |
| — | SURFACE WATER FEATURE |
| — | INFERRED GROUNDWATER CONTOURS IN OVERBURDEN (15 TH FEBRUARY 2008) |
| ● | WATER BODY |
| ⬇ | BEDROCK BOREHOLE |
| ⬇ | OVERBURDEN BOREHOLE |

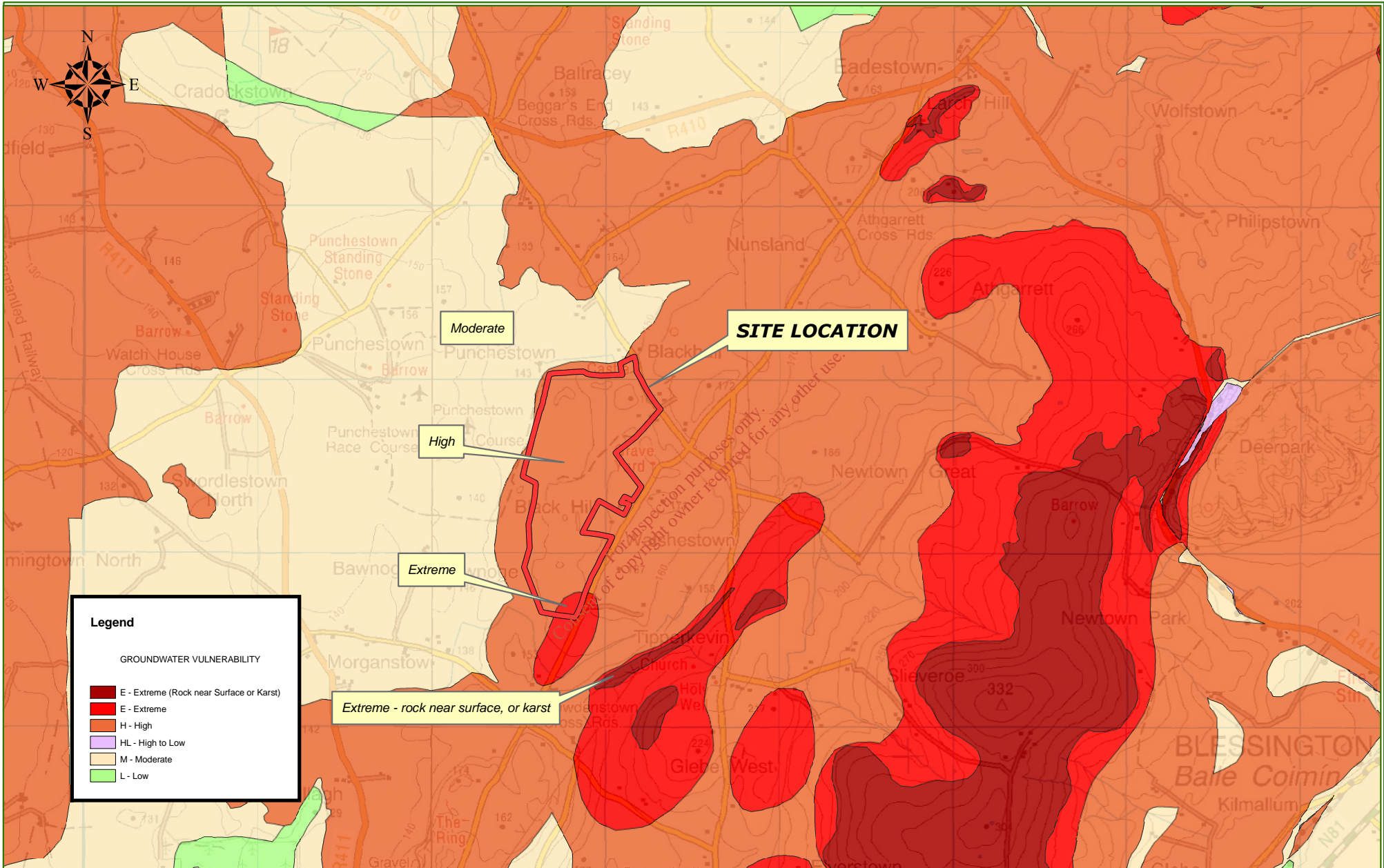


Consent of copyright owner required for any other use.

ORDNANCE SURVEY IRELAND
LICENCE NUMBER
AR0056008

| | | |
|--|-------------------|-----------------|
| CEMEX (RO) LTD | | |
| Project: Walshestown Pit Restoration | | |
| Location: Walshestown, Co. Kildare | | |
| Title: INFERRED GROUNDWATER CONTOURS IN BEDROCK (15TH FEBRUARY 2008) | | |
| Project No. 07507150231 | Checked by: CW | FIGURE No. 12.6 |
| File No. 12.6 | Approved by: GFP | |
| Created by: ODB | | |
| ISSUE TO KILDARE CO. CO | DEC. '08 | A |
| Description: | Date: | Vers: |
| Scale 1:10,000A3 1:15,000A4 | Date: NOVEMBER 20 | |
| | | |

| LEGEND | |
|---|---|
| — | APPLICATION SITE BOUNDARY |
| — | TOWNLAND BOUNDARY |
| — | REGIONAL ROAD |
| — | LOCAL ROAD |
| — | SURFACE WATER FEATURE |
| — | INFERRED GROUNDWATER CONTOURS IN BEDROCK (15 TH FEBRUARY 2008) |
| ● | WATER BODY |
| ⊕ | BEDROCK BOREHOLE |
| ⊕ | OVERBURDEN BOREHOLE |



Legend

GROUNDWATER VULNERABILITY

- E - Extreme (Rock near Surface or Karst)
- E - Extreme
- H - High
- HL - High to Low
- M - Moderate
- L - Low


Moderate

High

Extreme

Extreme - rock near surface, or karst

SITE LOCATION

| | | | | | | | | |
|--|---|---|---------------------|-------------------------------------|------------------|----------------|---|---------------------------|
|  Golder Associates TOWN CENTRE HOUSE, DUBLIN ROAD, NAAS, CO. KILDARE TEL: 045 874411 - FAX: 045 874549 - www.golder.com | Client CEMEX (ROI) LTD | Project number: 07507150231 | Created by: AS | Issue to: Kildare County Council | Date: Dec '08 | Revision: A | Title: AQUIFER VULNERABILITY (Source: GSI) | 12.7 Figure No. |
| | Location: WALSHESTOWN, CO. KILDARE | File Location: GIS PROJECTS\WALSHESTOWN\EIS 12.4 | Checked by: CW | | | | | |
| | Project: WALSHESTOWN PIT RESTORATION | ORDNANCE SURVEY OF IRELAND LICENCE NUMBER AR0056008 | Approved by: GFP | | | | Scale: 1:30,000 A4 | |
| | | | | | | | | |