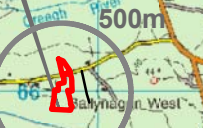


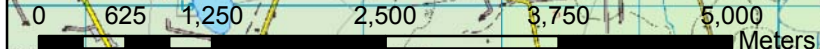


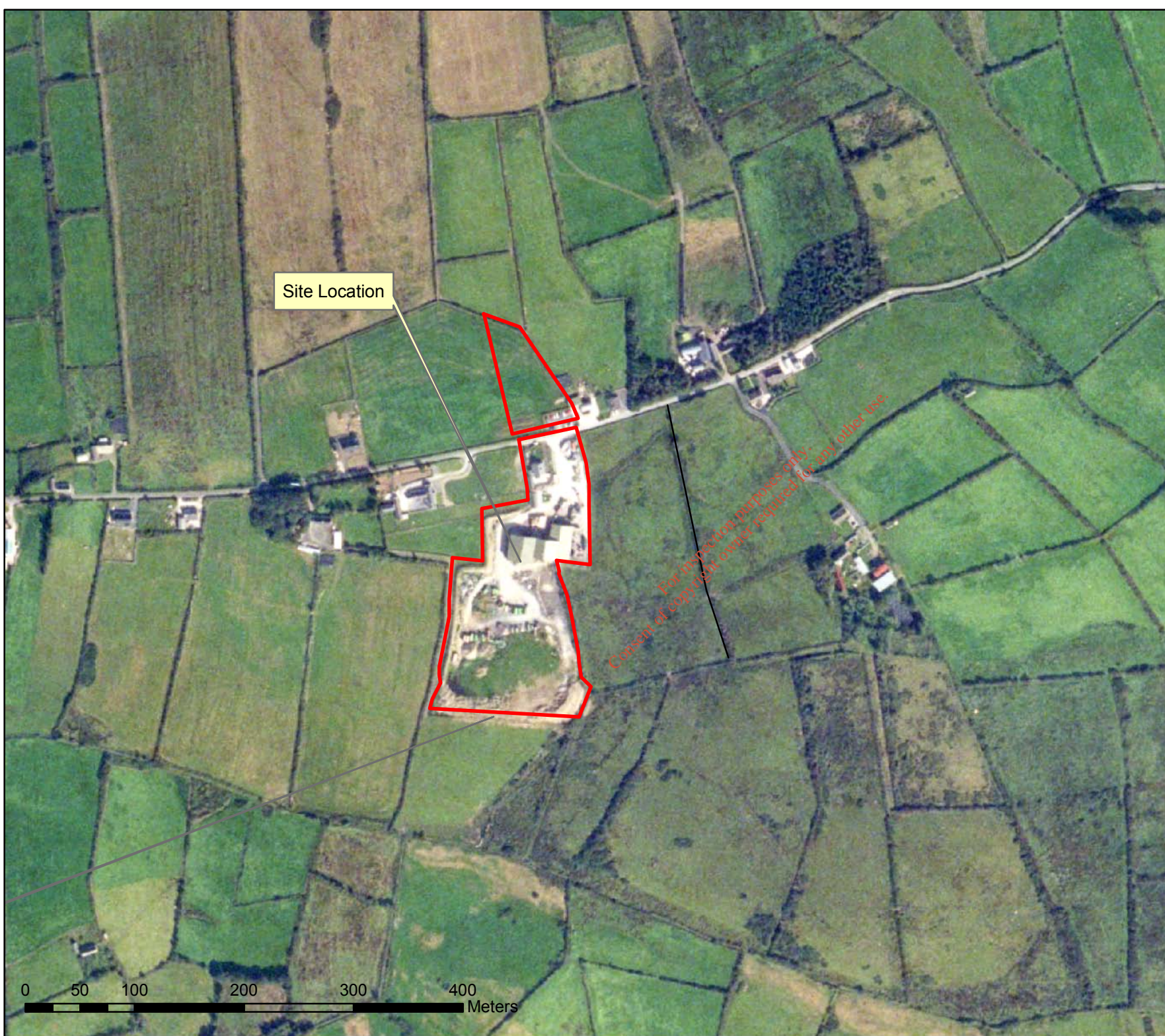
Site Location



Consent of copyright owner required for any other use.

Revision No.	Description			
 BORD NA MÓNA <small>BORD NA MÓNA ENVIRONMENTAL LIMITED</small> Main Street, Newbridge, Co. Kildare. Phone 045 431201 Fax. 045 434207 www.bnm.ie/environmental email: ed.info@bnm.ie				
C Copyright Bord na Mona Environmental Ltd. <small>* Copyright and ownership of this drawing is vested in Bord na Mona Environmental Ltd. where prior written consent is required for its use, reproduction or for publication to a third party. All rights reserved by the law of copyright and by international copyright conventions are reserved to Bord na Mona Environmental Ltd. and may be protected by court proceedings for damages and/or injunction and costs.</small>				
Client: Clean (Irl) Refuse & Recycling Ltd. (Grid Reference 102728N, 165969E)				
Project: Waste Licence/EIS				
Title: Site Location Map (WL Attachment B.2 & EIS Attachment 2)				
Date	Scale	Drawn by	Reviewed by	Approved by
Nov 2008	1:50,000	HB	SC	SC
Status:	Drawing No:			
				C(IRL)WL-03



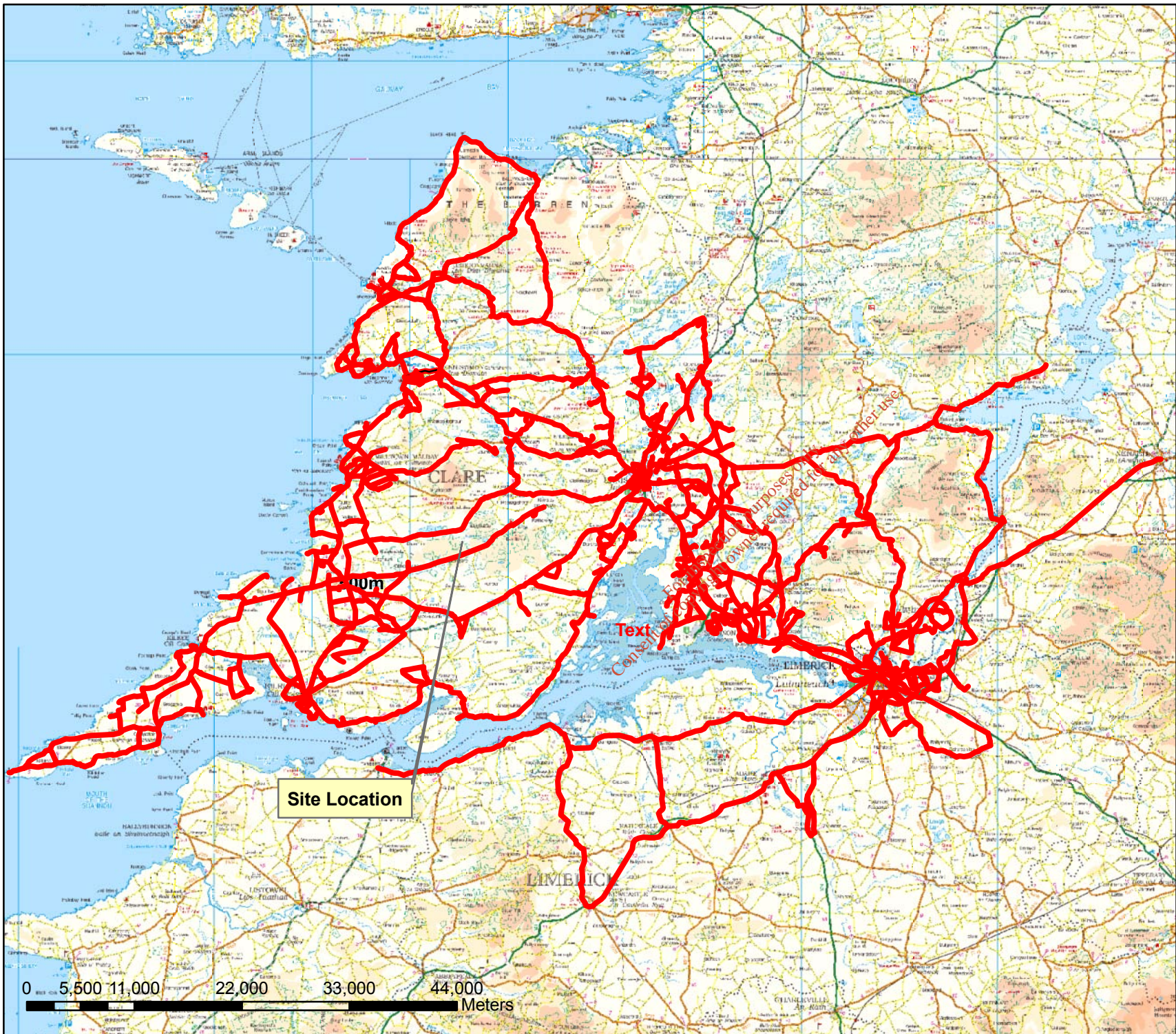


Site Location

For inspection purposes only.
 Copyright of copyright holder required for any other use.



Revision No.	Description			
 BORD NA MÓNA ENVIRONMENTAL LIMITED Main Street, Newbridge, Co. Kildare. Phone 045 431201 Fax. 045 434207 www.bnm.ie/environmental email: ed.info@bnm.ie				
© Copyright Bord na Mona Environmental Ltd. <small>*Copyright and ownership of this drawing is vested in Bord na Mona Environmental Ltd. where prior written consent is required for its use, reproduction or for publication to a third party. All rights reserved by the law of copyright and by international copyright conventions are reserved to Bord na Mona Environmental Ltd. and may be protected by court proceedings for damages and/or injunctions and costs.*</small>				
Client: Clean (Irl) Refuse & Recycling Ltd. (Grid Reference 12728N, 165969E)				
Project: Waste Licence/EIS				
Title: Site Location Map (WL Attachment B.2 & EIS Attachment 2)				
Date Nov 2008	Scale 1:5000	Drawn by HB	Reviewed by SC	Approved by SC
Status:		Drawing No.: C(IRL)WL-04		



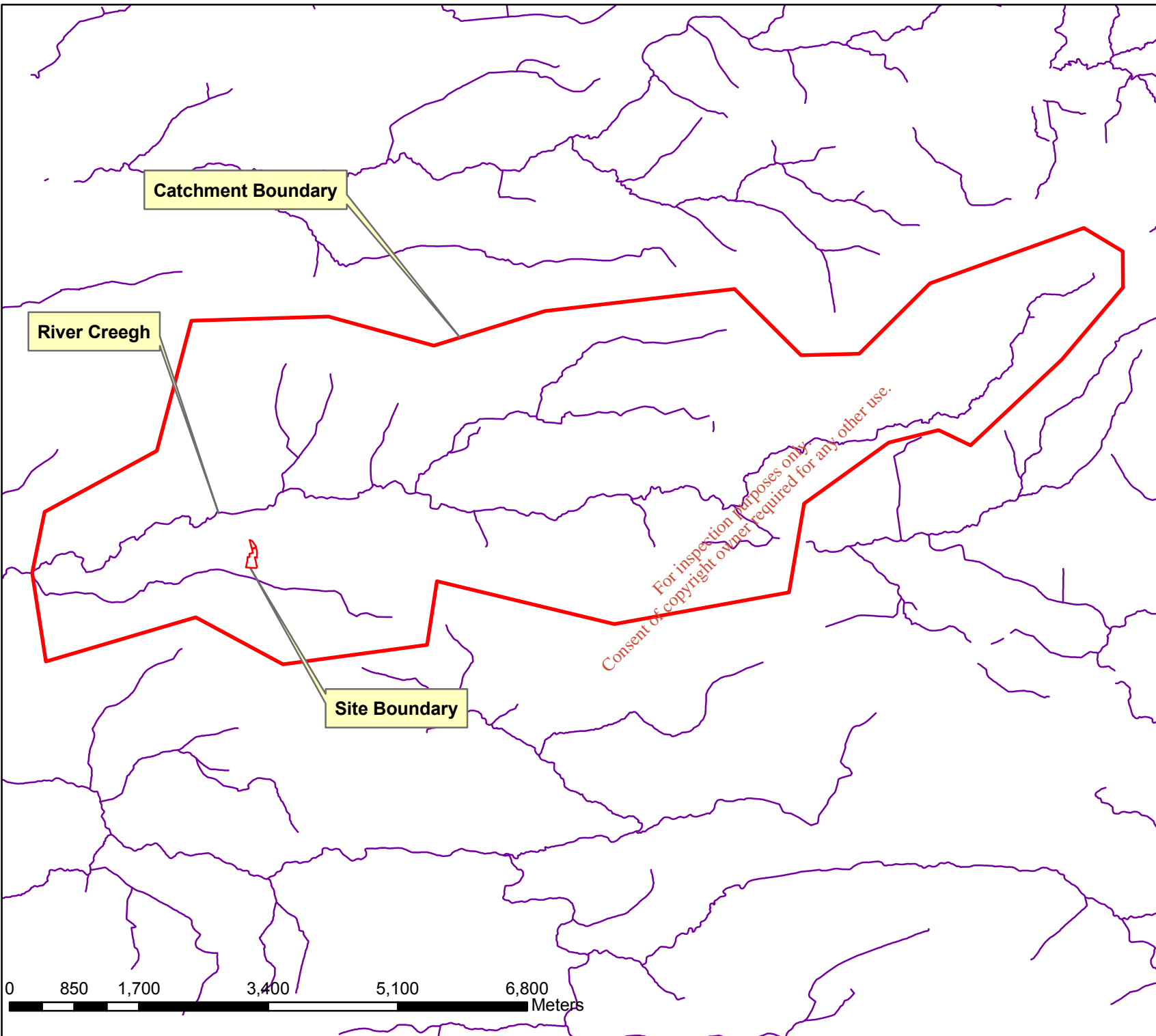
Revision No.	Description			
 BORD NA MÓNA ENVIRONMENTAL LIMITED Main Street, Newbridge, Co. Kildare. Phone 045 431201 Fax. 045 434207 www.bnm.ie/environmental email: ed.info@bnm.ie				
C Copyright Bord na Mona Environmental Ltd. <small>*Copyright and ownership of this drawing is vested in Bord na Mona Environmental Ltd. where prior written consent is required for its use, reproduction or for publication to a third party. All rights reserved by the law of copyright and by international copyright conventions are reserved to Bord na Mona Environmental Ltd. and may be protected by court proceedings for damages and/or injunctions and costs*</small>				
Client: Clean (Ir) Refuse & Recycling Ltd. (Grid Reference 102728N, 165969E)				
Project: Waste Licence/EIS				
Title: Collection Routes				
Date: Sept 2008	Scale: 1:500,000	Drawn by: PC	Reviewed by: SC	Approved by: BH
Status:		Drawing No.: C(IRL)JWL-13		



Revision No.	Description			
BORD NA MÓNA <small>BORD NA MÓNA ENVIRONMENTAL LIMITED</small> Main Street, Newbridge, Co. Kildare Phone 045 431201 Fax, 045 434207 www.bnm.ie/environmental email: ed.info@bnm.ie				
<small>© Copyright Bord na Mona Environmental Ltd. "Copyright and ownership of this drawing is vested in Bord na Mona Environmental Ltd. whose prior written consent is required for its use, reproduction or for publication to a third party. All rights reserved by the law of copyright and by international copyright conventions are reserved to Bord na Mona Environmental Ltd. and may be protected by court proceedings for damages and/or injunctions and costs"</small>				
Client: Clean (Ir) Refuse & Recycling Ltd. (Grid Reference 102728N, 165969E)				
Project: Waste Licence/EIS				
Title: 3.4 Hydrology (Location of Surface Waters)				
Date Sept 2008	Scale: 1:20,000	Drawn by: HB	Reviewed by: SC	Approved by: SC
Status:		Drawing No.: C(IRL)WL-14		



Revision No.	Description			
 BORD NA MÓNA <small>BORD NA MÓNA ENVIRONMENTAL LIMITED</small> Main Street, Newbridge, Co. Kildare. Phone 045 431201 Fax. 045 434207 www.bnm.ie/environmental email: ed.info@bnm.ie				
<small>C Copyright Bord na Mona Environmental Ltd. *Copyright and ownership of this drawing is vested in Bord na Mona Environmental Ltd. where prior written consent is required for its use, reproduction or for publication to a third party. All rights reserved by the law of copyright and by international copyright conventions are reserved to Bord na Mona Environmental Ltd. and may be protected by court proceedings for damages and/or injunctions and costs*</small>				
Client: Clean (Ir) Refuse & Recycling Ltd. (Grid Reference 102728N, 165969E)				
Project: Waste Licence/EIS				
Title: 3.4 Hydrology (Skivileen)				
Date	Scale	Drawn by:	Reviewed by:	Approved by:
Sept 2008	1:25,000	HB	SC	SC
Status:		Drawing No.:		
		C(IRL)WL-15		

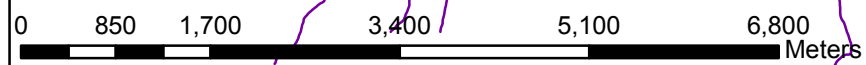


Catchment Boundary

River Creegh

Site Boundary

For inspection purposes only.
Consent of copyright owner required for any other use.



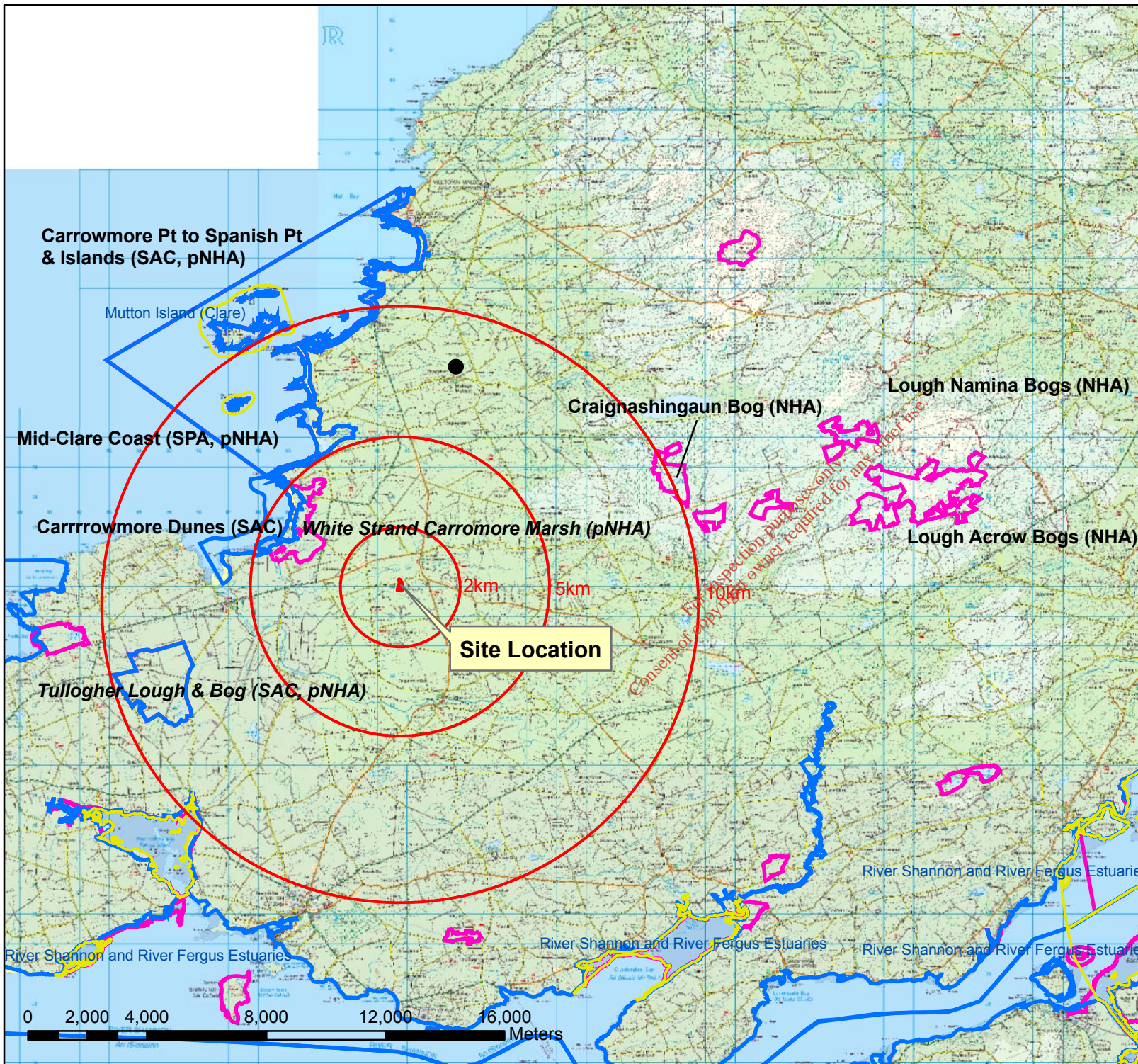
Revision No.	Description
 BORD NA MÓNA ENVIRONMENTAL LIMITED Main Street, Newbridge, Co. Kildare. Phone 045 431201 Fax. 045 434207 www.bnm.ie/environmental email: ed.info@bnm.ie	
© Copyright Bord na Mona Environmental Ltd. <small>"Copyright and ownership of this drawing is vested in Bord na Mona Environmental Ltd. whose prior written consent is required for its use, reproduction or for publication to a third party. All rights reserved by the law of copyright and by international copyright conventions are reserved to Bord na Mona Environmental Ltd. and may be protected by court proceedings for damages and/or injunctions and costs."</small>	
Client: Clean (Ir) Refuse & Recycling Ltd. (Grid Reference 102728N, 165969E)	
Project: Waste Licence/EIS	
Title: 3.4 Hydrology (River Creegh Catchment Area)	
Date: Oct 2008	Scale: 1:60,000
Drawn by: HB	Reviewed by: SC
Approved by: SC	
Status:	Drawing No.: C(IRL)WL-16



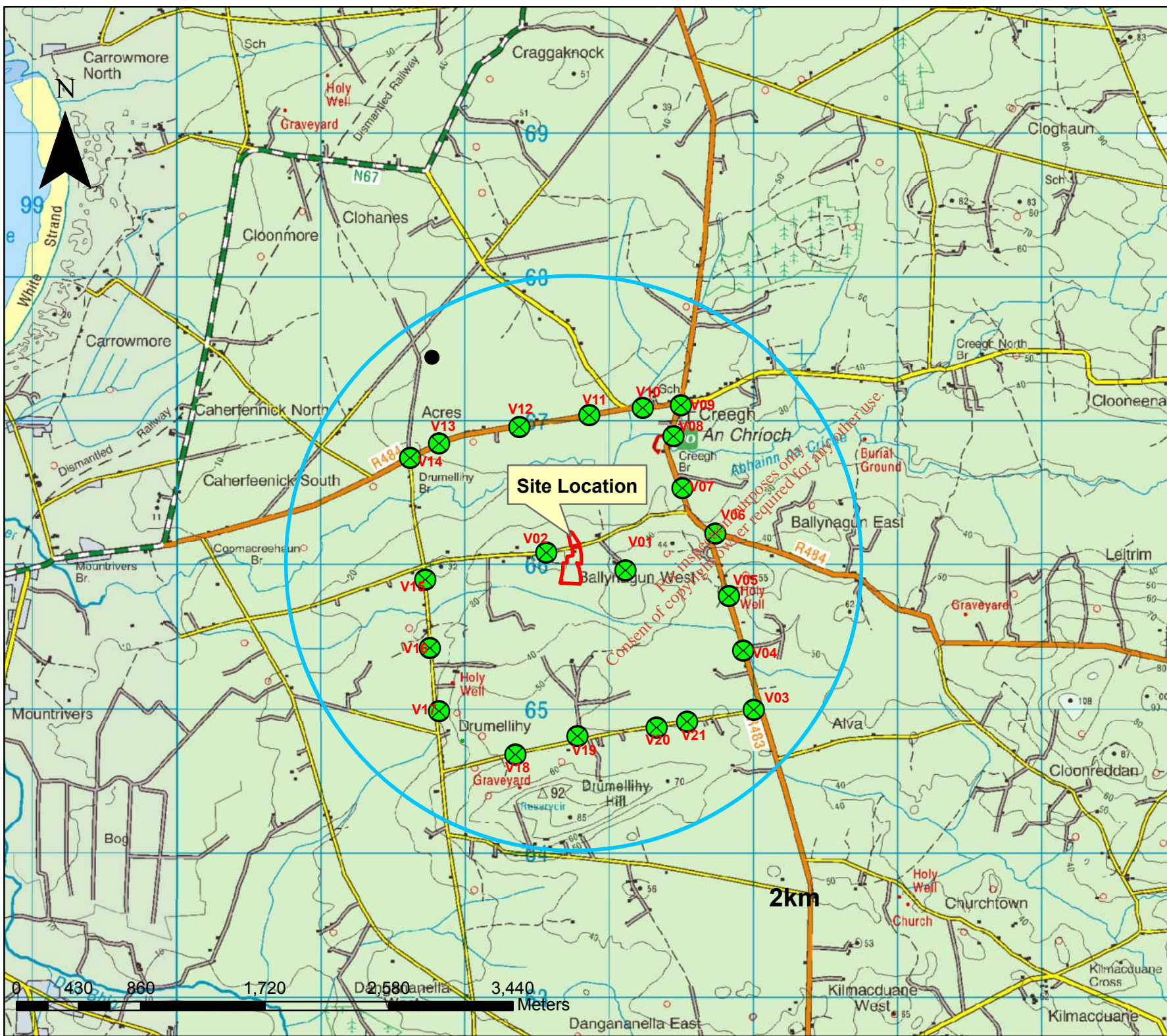
Revision No.	Description			
 BORD NA MÓNA ENVIRONMENTAL LIMITED Main Street, Newbridge, Co. Kildare. Phone 045 431201 Fax. 045 434207 www.bnm.ie/environmental email: ed.info@bnm.ie				
<small>© Copyright Bord na Mona Environmental Ltd. All rights reserved. No part of this drawing may be reproduced, stored in a retrieval system, or transmitted in any form or by any means, electronic, mechanical, photocopying, recording, or by any information storage and retrieval system, without the prior written consent of Bord na Mona Environmental Ltd. where prior written consent is required for its use, reproduction or for publication to a third party. All rights reserved by the law of copyright and by international copyright conventions are reserved to Bord na Mona Environmental Ltd. and may be protected by court proceedings for damages and/or injunctions and costs.</small>				
Client: Clean (Ir) Refuse & Recycling Ltd. (Grid Reference 102728N, 165969E)				
Project: Waste Licence/EIS				
Title: 3.8 Traffic				
Date	Scale	Drawn by:	Reviewed by:	Approved by:
Nov 2008	1:15,000	PC	SC	HB
Status:		Drawing No.: C(IRL)WL-17		



Revision No.	Description			
 BORD NA MÓNA ENVIRONMENTAL LIMITED Main Street, Newbridge, Co. Kildare. Phone 045 431201 Fax. 045 434207 www.bnm.ie/environmental email: ed.info@bnm.ie				
Copyright Bord na Mona Environmental Ltd. <small>*Copyright and ownership of this drawing is vested in Bord na Mona Environmental Ltd. whose prior written consent is required for its use, reproduction or for publication to a third party. All rights reserved by the law of copyright and by international copyright conventions are reserved to Bord na Mona Environmental Ltd. and may be protected by court proceedings for damages and/or injunction and cost.*</small>				
Client: Clean (Ir) Refuse & Recycling Ltd. (Grid Reference 102728N, 165969E)				
Project: Waste Licence/EIS				
Title: 3.8 Traffic (Junction Survey)				
Date	Scale	Drawn by:	Reviewed by:	Approved by:
Nov 2008	1:10,000	PC	SC	HB
Status:		Drawing No.:		
		C(IRL)WL-18		



Revision No.	Description			
 BORD NA MÓNA <small>BORD NA MÓNA ENVIRONMENTAL LIMITED</small> Main Street, Newbridge, Co. Kildare. Phone 045 431201 Fax. 045 434207 www.bnm.ie/environmental email: ed.info@bnm.ie				
<small>© Copyright Bord na Mona Environmental Ltd. All rights reserved. No part of this drawing is to be reproduced or published in any form without the written consent of Bord na Mona Environmental Ltd. All rights reserved by the law of copyright and by international copyright conventions are reserved to Bord na Mona Environmental Ltd. and may be protected by court proceedings for damages and/or injunctions and costs.</small>				
Client: Clean (Ir) Refuse & Recycling Ltd. (Grid Reference 102728N, 165969E)				
Project: Waste Licence/EIS				
Title: 3.2 Flora and Fauna				
Date: Sept 2008	Scale: 1:180,000	Drawn by: HB	Reviewed by: SC	Approved by: SC
Status: C(IRL)WL-20		Drawing No.: C(IRL)WL-20		



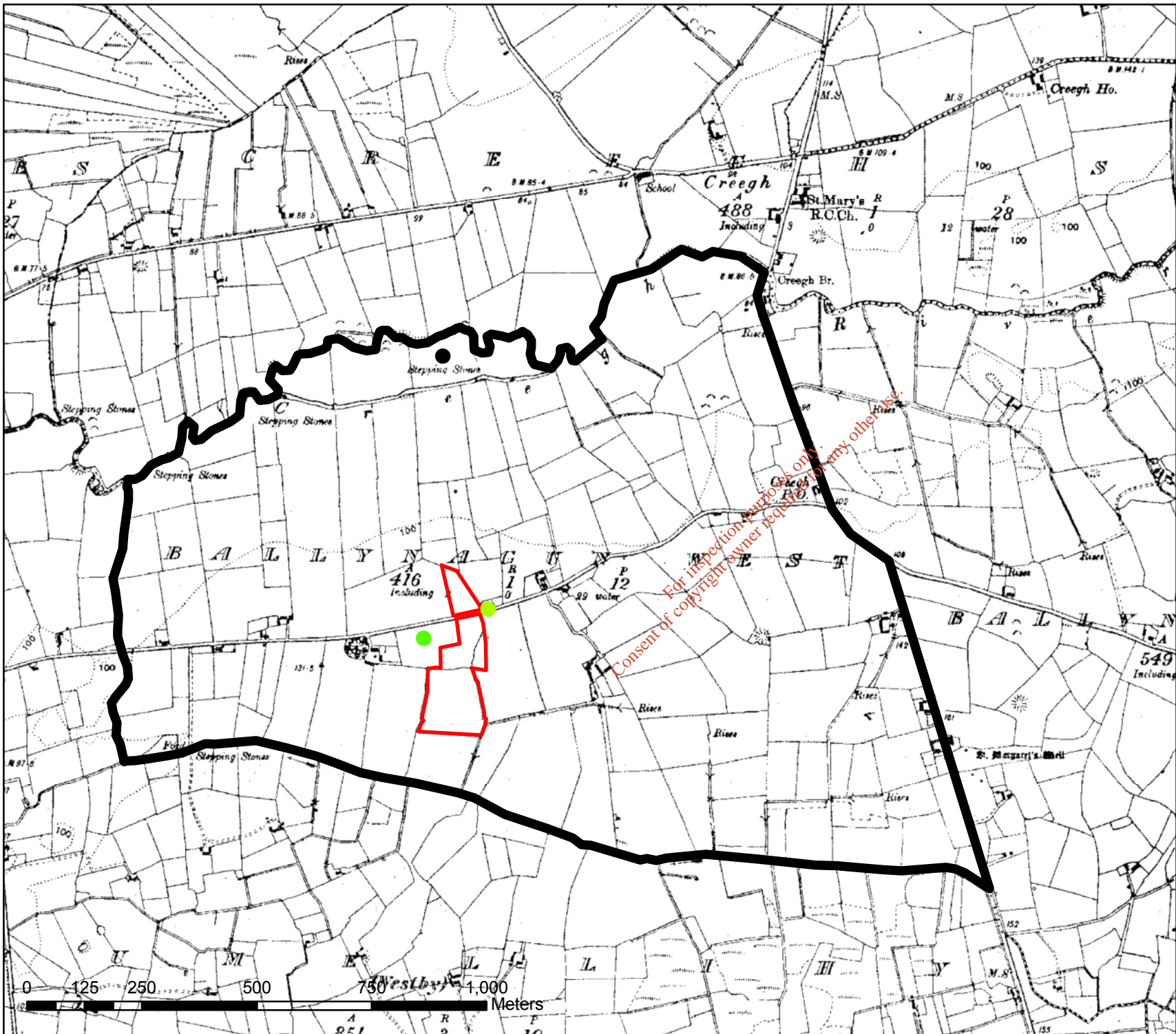
 Viewpoints

 Site Boundary

 Distance 2km

Site Location

Revision No.	Description
 BORD NA MÓNA <small>BORD NA MÓNA ENVIRONMENTAL LIMITED</small> Main Street, Newbridge, Co. Kildare. Phone 045 431201 Fax: 045 434207 www.bnm.ie/environmental email: ed.info@bnm.ie	
C Copyright Bord na Mona Environmental Ltd. <small>*Copyright and ownership of this drawing is vested in Bord na Mona Environmental Ltd. where prior written consent is required for its use, reproduction or for publication to a third party. All rights reserved by the law of copyright and by international copyright conventions are reserved to Bord na Mona Environmental Ltd. and may be protected by court proceedings for damages and/or injunctions and costs.*</small>	
Client:	Clean (Irl) Refuse & Recycling Ltd. (Grid Reference 102728N, 165969E)
Project:	Waste Licence/EIS
Title:	Landscape (Viewpoints)
Date:	Sept 2008
Scale:	1:38,000
Drawn by:	HB
Reviewed by:	SC
Approved by:	SC
Status:	
Drawing No.:	C(IRL)WL-22



For inspection purposes only.
Consent of copyright owner required for any other use.

Revision No.	Description
 BORD NA MÓNA <small>BORD NA MÓNA ENVIRONMENTAL LIMITED</small> Main Street, Newbridge, Co. Kildare. Phone 045 431201 Fax. 045 434207 www.bnm.ie/environmental email: ed.info@bnm.ie	
<small>© Copyright Bord na Mona Environmental Ltd. *Copyright and ownership of this drawing is vested in Bord na Mona Environmental Ltd. where prior written consent is required for its use, reproduction or for publication to a third party. All rights reserved by the law of copyright and by international copyright conventions are reserved to Bord na Mona Environmental Ltd. and may be protected by court proceedings for damages and/or injunctions and costs*</small>	
Client: Clean (Irl) Refuse & Recycling Ltd. (Grid Reference 102728N, 165969E)	
Project: Waste Licence/EIS	
Title: Ballinagun West Townland	
<small>Date:</small> Sept 2008	<small>Scale:</small> 1:10,000
<small>Drawn by:</small> PC	<small>Reviewed by:</small> SC
<small>Approved by:</small> HB	
<small>Status:</small>	<small>Drawing No.:</small> C(IRL)WL-05

 Ordnance Survey	<small>c Ordnance Survey of Ireland All rights reserved Permit Number 0035608</small>
----------------------------	--