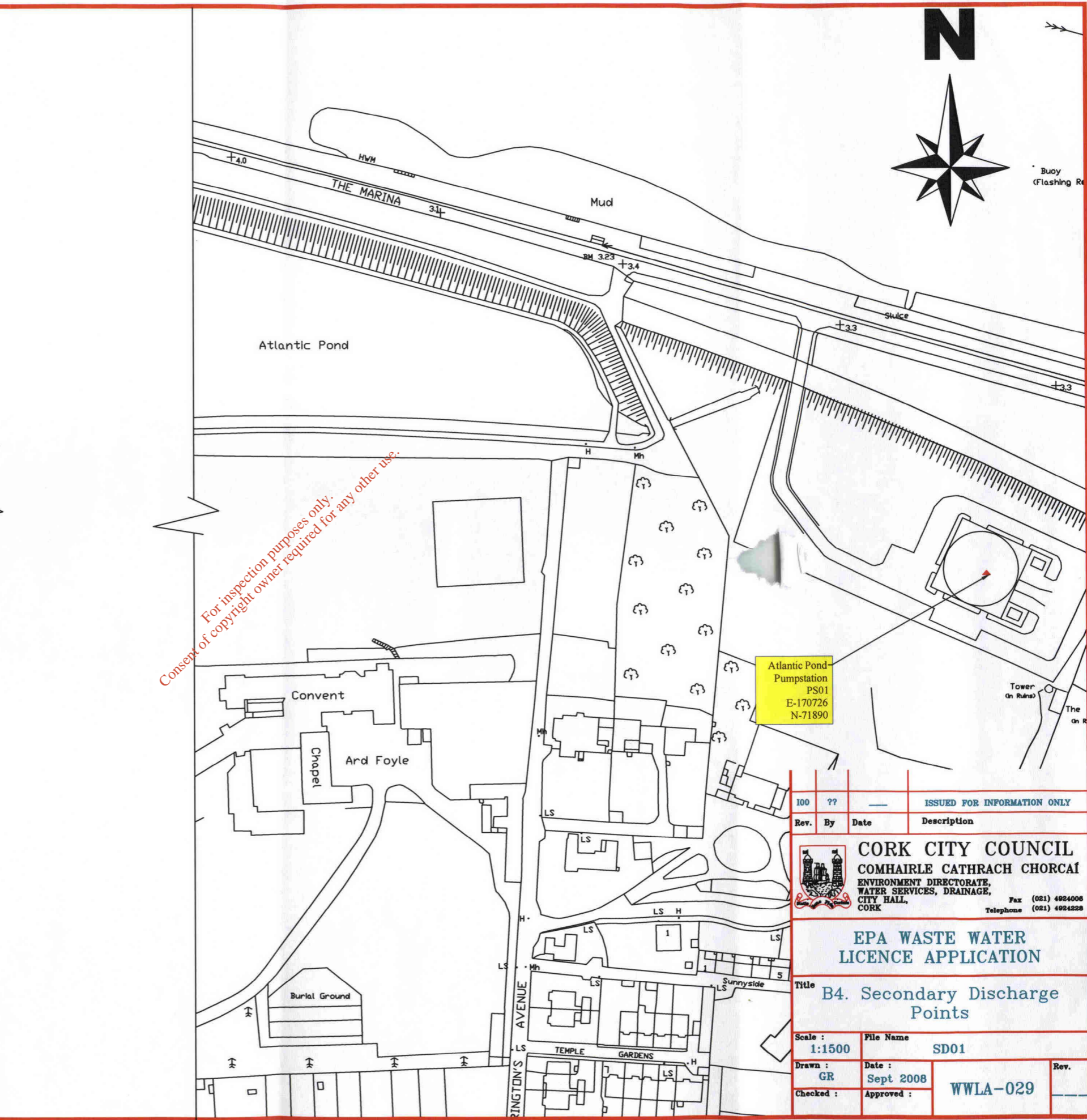
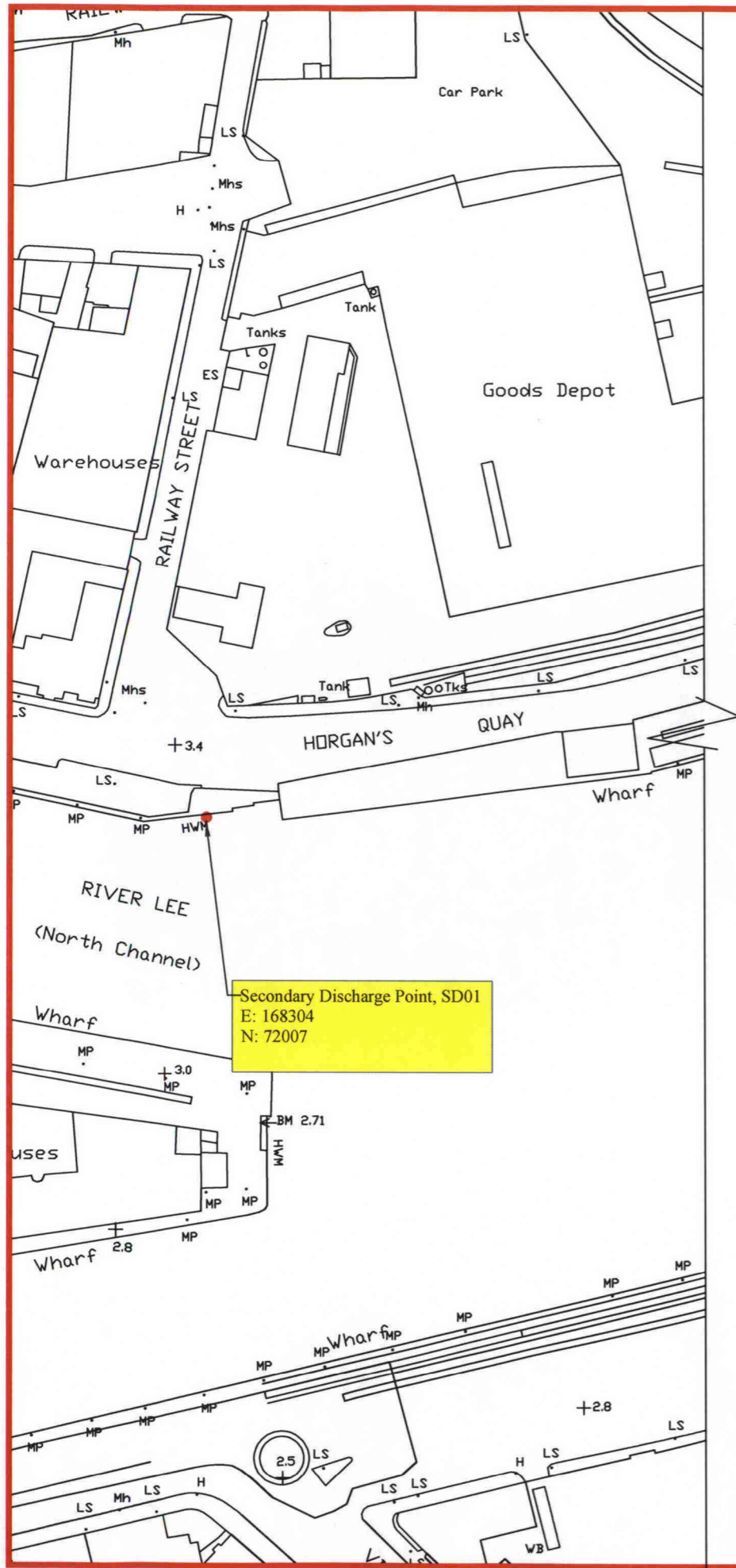



Table B4. Location of Secondary discharge Points								
Application Drawing Reference	Type of Discharge	Unique Point code	original application reference	Discharges to	Discharge Location	Easting	Northing	Source of Discharge
						6E-digit Irish National Grid reference	6N-digit Irish National Grid reference	
WWLA-029	P.S./ EO	SD01	PS01	River Lee	Overflow back up of gravity interceptor to Horgans Quay	168304	72007	Atlantic Pond Pumping Station
WWLA-056	Combined sewer discharge	SD02	-----	River Lee North Channel	East of St Patrick's Bridge, south bank	167682	72062	St Patrick's Street Combined Culvert
WWLA-030	P.S./ EO	SD03	PS03	Lee South Channel,	Lee South Channel, Near weir, Gillabbey	166628	71487	Gillabbey Pumping station
WWLA-031	P.S./ EO	SD04	PS04	Curraheen River	Near Elton lawn/ Pitch & Putt	163233	69984	Rossa Avenue Pumping Station
WWLA-032	P.S./ EO	SD05	PS05	Glasheen River	opposite Donscourt	164737	69406	Dons Court Pumping Station
WWLA-032	P.S./ EO	SD06	PS06	Glasheen River	opposite 36 Woodhaven, u/s of bridge	164254	69366	Stratton Pines Pumping Station
WWLA-033	P.S./ EO	SD07	PS07	Curraheen River	North of Curraheen close, at walkway	162927	69875	NBA Curraheen Pumping Station
WWLA-034	P.S./ EO	SD08	PS08	Curraheen River	West of Rossbrook housing estate	162790	70712	Rossbrook Pumping Station
WWLA-035	P.S./ EO	SD09	PS09	Curraheen River	South of Carrigrohane road, East of playing pitches,	164500	71228	J. A. Woods Pumping Station
WWLA-035	P.S./ EO	SD10	PS10	Curraheen River	rear of City Print works	164942	71226	City Printers Pumping Station
WWLA-036	P.S./ EO	SD11	PS11	Curraheen River	North Bank, west of Victoria Bridge	165199	71159	Victoria Cycles Pumping Station
WWLA-036	P.S./ EO	SD12	PS12	Curraheen River	North Bank, to rear of University Hall Student Accom.	165280	71161	University Hall Pumping Station
WWLA-037	P.S./ EO	SD14	PS14	River Lee North Channel	Sundays Well Rd opposite UCC Mardyke grounds	165509	71592	Sundays Well Pumping Station
WWLA-038	P.S./ EO	SD15	PS15	Trabeg River	Trabeg River rear of Greenhills estate /landfill site	168668	69892	Greenhills Pumping station
WWLA-039	P.S./ EO	SD16	PS16	Tramore River	Nemo sports ground North of South Ring Rd, walkway	169117	69207	Glencurrig Pumpinf Station
WWLA-038	P.S./ EO	SD17	PS17	Trabeg River	Trabeg River South of Heatherton Park	168569	69975	Heatherton Pumping Station
WWLA-040	P.S./ EO	SD18	PS18	Lough Mahon	West of Lee Tunnel	172847	71800	Mahon North Pumping Station
WWLA-041	P.S./ EO	SD19	PS19	Lough Mahon	Lakeland Strand, Jacobs island	173155	70551	Mahon South Pumping Station
WWLA-042	P.S./ EO	SD20	PS20	River Lee North Channel	East of Shandon Bridge, south bank	167273	72119	Coal Quay Pumping Station
WWLA-043	P.S./ EO	SD21	PS21	Lee South Channel,	East of Nano Nagle Bridge, north Bank	167386	71575	Grand Parade Pumping Station
WWLA-030	P.S./ EO	SD22	PS22	Lee South Channel,	at Crosses Green Quay	167120	71580	Crosses Green Pumping Station
WWLA-036	P.S./ EO	SD25	PS25	Lee South Channel,	Near Kingsley hotel, South Bank, east of new footbridge	165259	71321	Victoria Cross Kingsley Pumping Station
WWLA-044	P.S./ EO	SD26	PS26	Douglas Estuary	Douglas Estuary at Mahon Golf Club	171681	69807	Bessboro Pumping Station
WWLA-045	P.S./ EO	SD27	PS27	River Lee	West of Blackrock Castle	172273	71971	Castle Avenue Pumping Station

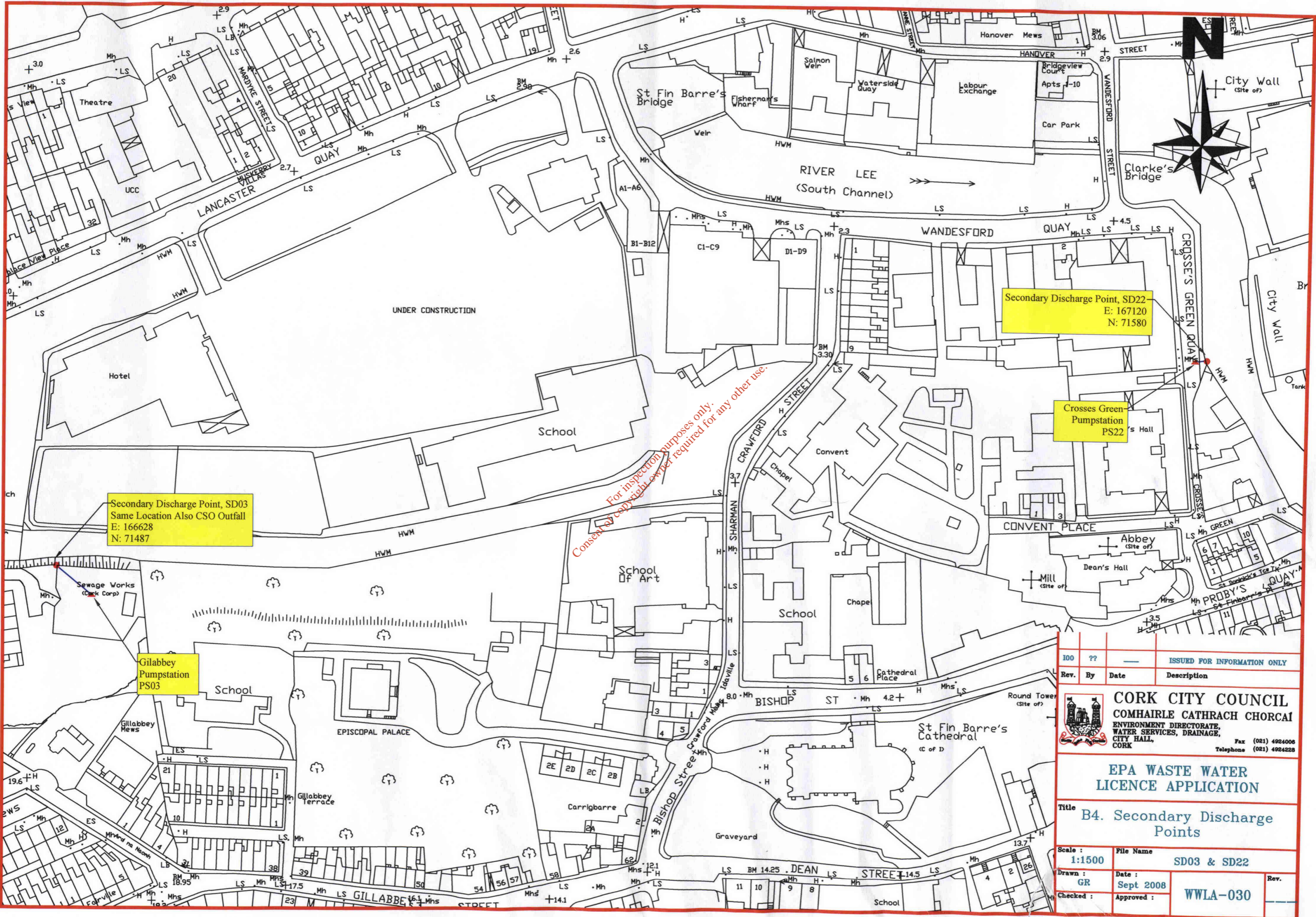
Table B4. Location of Secondary discharge Points								
Application Drawing Reference	Type of Discharge	Unique Point code	original application reference	Discharges to	Discharge Location	Eastings	Northings	Source of Discharge
						6E-digit Irish National Grid reference	6N-digit Irish National Grid reference	
WWLA-046	P.S./EO	SD28	PS28	River Lee	River Lee Lr opp. Glamire Rd, entrance to Tivoli Ind estate	170597	72256	Tivoli Pumping Station
WWLA-047	P.S./EO	SD29	PS29	River Lee	River Lee Lr opp. Glamire Rd, in Tivoli Ind estate	171181	72152	Tivoli Industrial Estate Pumping Station
WWLA-048	P.S./EO	SD30	PS30	River Lee	Horgans Quay	168777	72120	Railway Yard pumping Station
WWLA-049	P.S./EO	SD31	PS31	River Lee	Lower Glanmire Rd opp. Bellevue	169794	72312	Bellevue Pumping Station
WWLA-051	P.S./EO	SD32	PS32	Lough Mahon	Little Island Co.Cork	175349	71503	Flaxfort Pumping Station
WWLA-052	P.S./EO	SD33	PS33	Lough Mahon	Little Island Co.Cork	174489	71167	Wallingstown Pumping Station
WWLA-053	P.S./EO	SD34	PS34	Lough Mahon	Little Island Co.Cork	177512	71475	Courtstown Pumping Station
WWLA-054	P.S./EO	SD35	PS35	Douglas Estuary	Rochestown Rd Near Harty's Quay	172404	69758	Ronaynes Court Pumping Station
WWLA-055	P.S./EO	SD36	PS36	Douglas Estuary	North of Rochestown Cross	173107	69468	Rochestown Cross Pumping Station
WWLA-032	P.S./EO	SD37	PS37	Glasheen River	d/s of bridge, opposite Woodbrook (Woodhaven)	164373	69422	Woodbrook Pumping station
WWLA-050	P.S./EO	SD38	PS38	Glasheen River	Storm pipe to Glasheen river, West of Sarsfield roundabout, N Side of South Ring Rd	165187	69468	Sarsfield Road Pumping Station
Note:								
	P.S./EO	Pumping Station / Emergency Overflow		Total 35 No. Secondary discharge Pts (34 PS)				

For inspection purposes only  
Consent of copyright owner required for any other use



100	??	—	ISSUED FOR INFORMATION ONLY
Rev.	By	Date	Description
 <b>CORK CITY COUNCIL</b> COMHAIRLE CATHRACH CHORCAI ENVIRONMENT DIRECTORATE, WATER SERVICES, DRAINAGE, CITY HALL, CORK Fax (021) 4924006 Telephone (021) 4924228			
<b>EPA WASTE WATER LICENCE APPLICATION</b>			
Title			B4. Secondary Discharge Points
Scale :	File Name		
1:1500	SD01		
Drawn :	GR	Date :	Sept 2008
Checked :	Approved :	WWLA-029	
			Rev.





Secondary Discharge Point, SD03  
Same Location Also CSO Outfall  
E: 166628  
N: 71487

Secondary Discharge Point, SD22  
E: 167120  
N: 71580

Crosses Green  
Pumpstation  
PS22

Gillabey  
Pumpstation  
PS03

For inspection purposes only.  
Consent of copyright holder required for any other use.

100	??	—	ISSUED FOR INFORMATION ONLY
Rev.	By	Date	Description

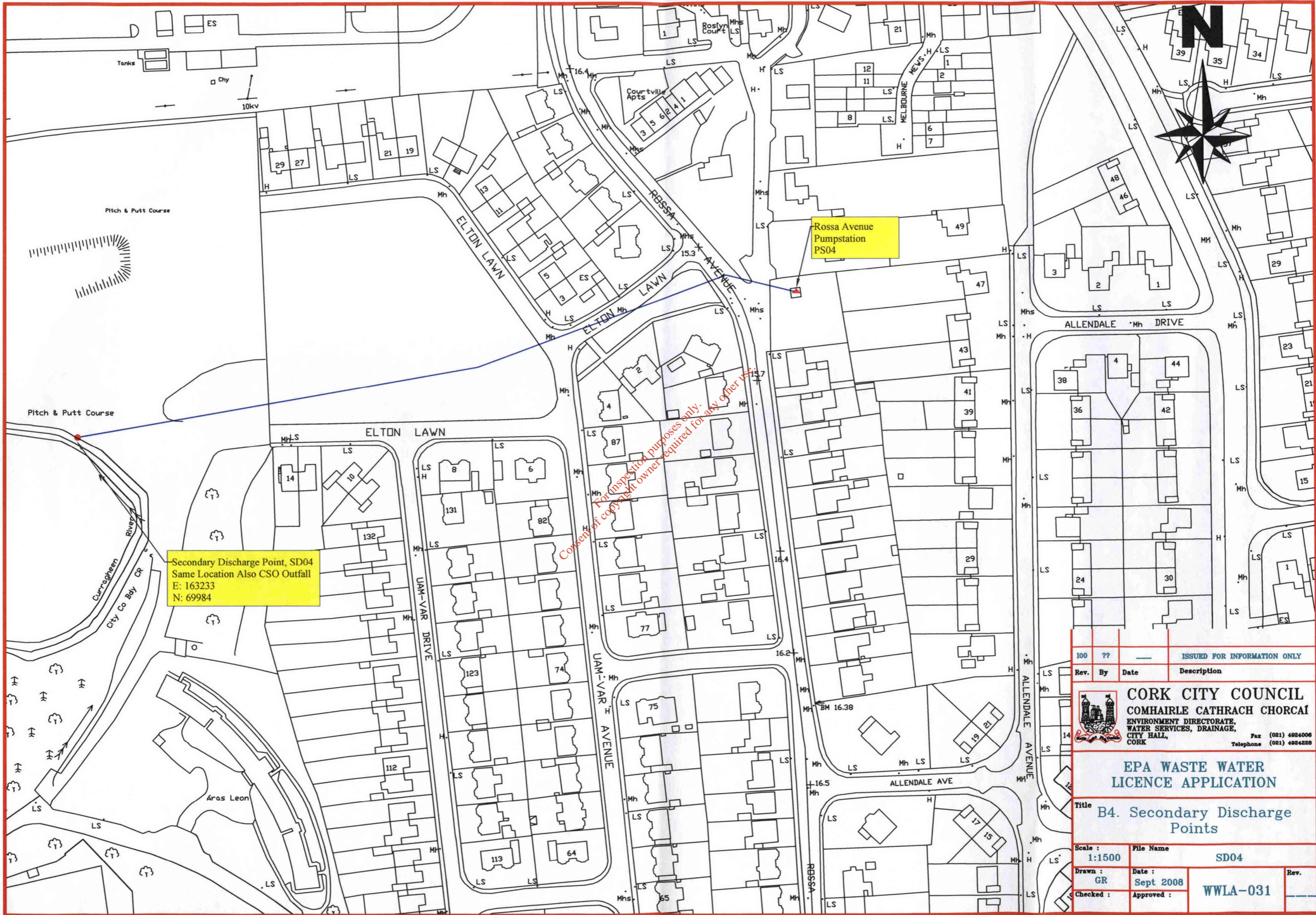
**CORK CITY COUNCIL**  
COMHAIRLE CATHRACH CHORCAI  
ENVIRONMENT DIRECTORATE,  
WATER SERVICES, DRAINAGE,  
CITY HALL,  
CORK  
Fax (021) 4924006  
Telephone (021) 4924228

**EPA WASTE WATER  
LICENCE APPLICATION**

Title **B4. Secondary Discharge Points**


Scale : <b>1:1500</b>	File Name <b>SD03 &amp; SD22</b>
Drawn : <b>GR</b>	Date : <b>Sept 2008</b>
Checked :	Approved : <b>WWLA-030</b>



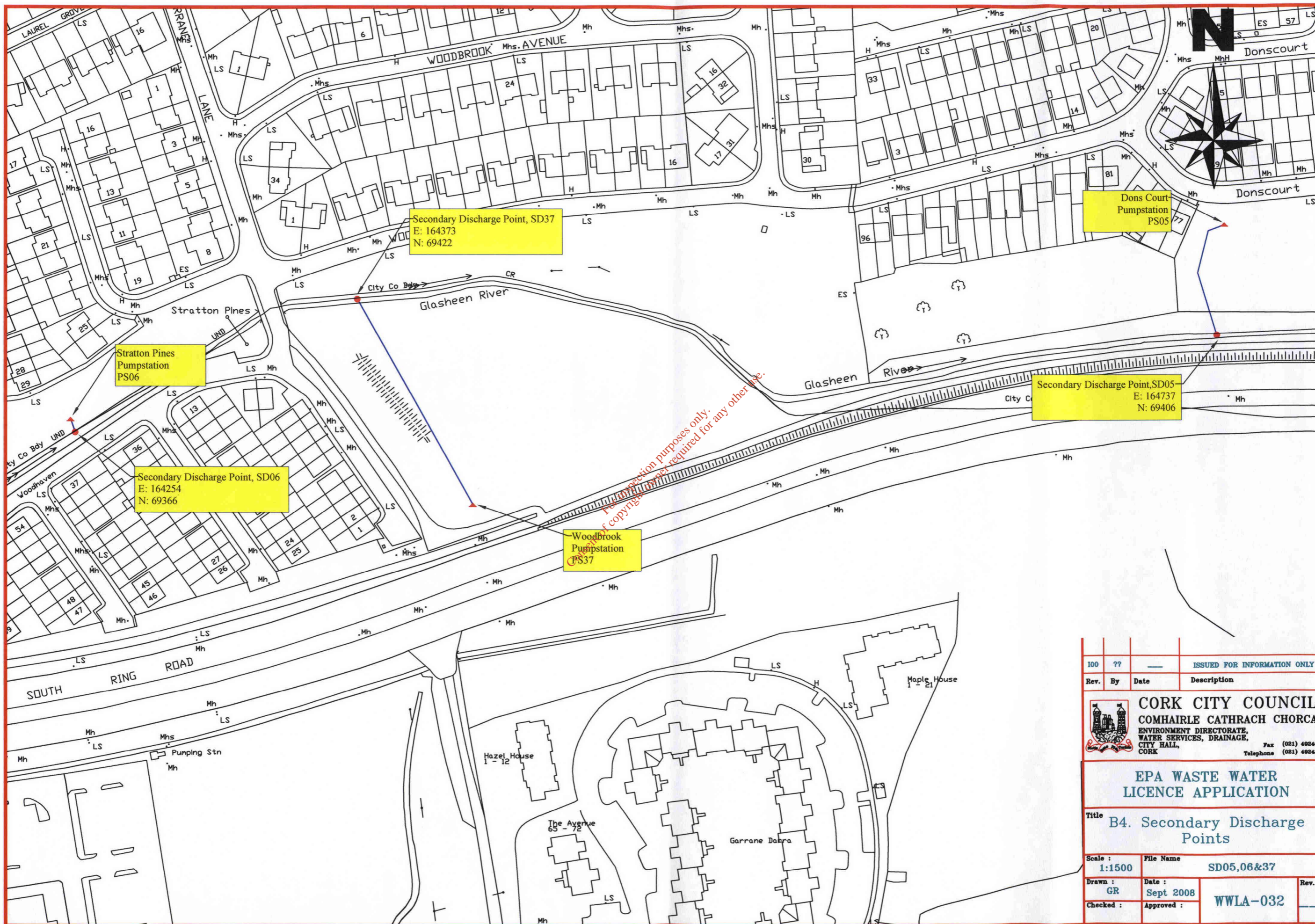



Secondary Discharge Point, SD04  
Same Location Also CSO Outfall  
E: 163233  
N: 69984

Rossa Avenue  
Pumpstation  
PS04

100	??	ISSUED FOR INFORMATION ONLY
Rev.	By	Date
		Description
 <b>CORK CITY COUNCIL</b> COMHAIRLE CATHRACH CHORCAI ENVIRONMENT DIRECTORATE, WATER SERVICES, DRAINAGE, CITY HALL, CORK. Fax (021) 4924006 Telephone (021) 4924228		
<b>EPA WASTE WATER          LICENCE APPLICATION</b>		
Title <b>B4. Secondary Discharge Points</b>		
Scale :	File Name	
<b>1:1500</b>	<b>SD04</b>	
Drawn :	Date :	Rev.
<b>GR</b>	<b>Sept 2008</b>	
Checked :	Approved :	<b>WWLA-031</b>





100	??	—	ISSUED FOR INFORMATION ONLY
Rev.	By	Date	Description
 <b>CORK CITY COUNCIL</b> COMHAIRLE CATHRACH CHORCAI ENVIRONMENT DIRECTORATE, WATER SERVICES, DRAINAGE, CITY HALL, CORK			Fax (021) 4924006 Telephone (021) 4924228
<b>EPA WASTE WATER LICENCE APPLICATION</b>			
Title <b>B4. Secondary Discharge Points</b>			
Scale :	File Name		
1:1500	SD05,06&37		
Drawn :	Date :	Rev.	
GR	Sept 2008		
Checked :	Approved :	WWLA-032	