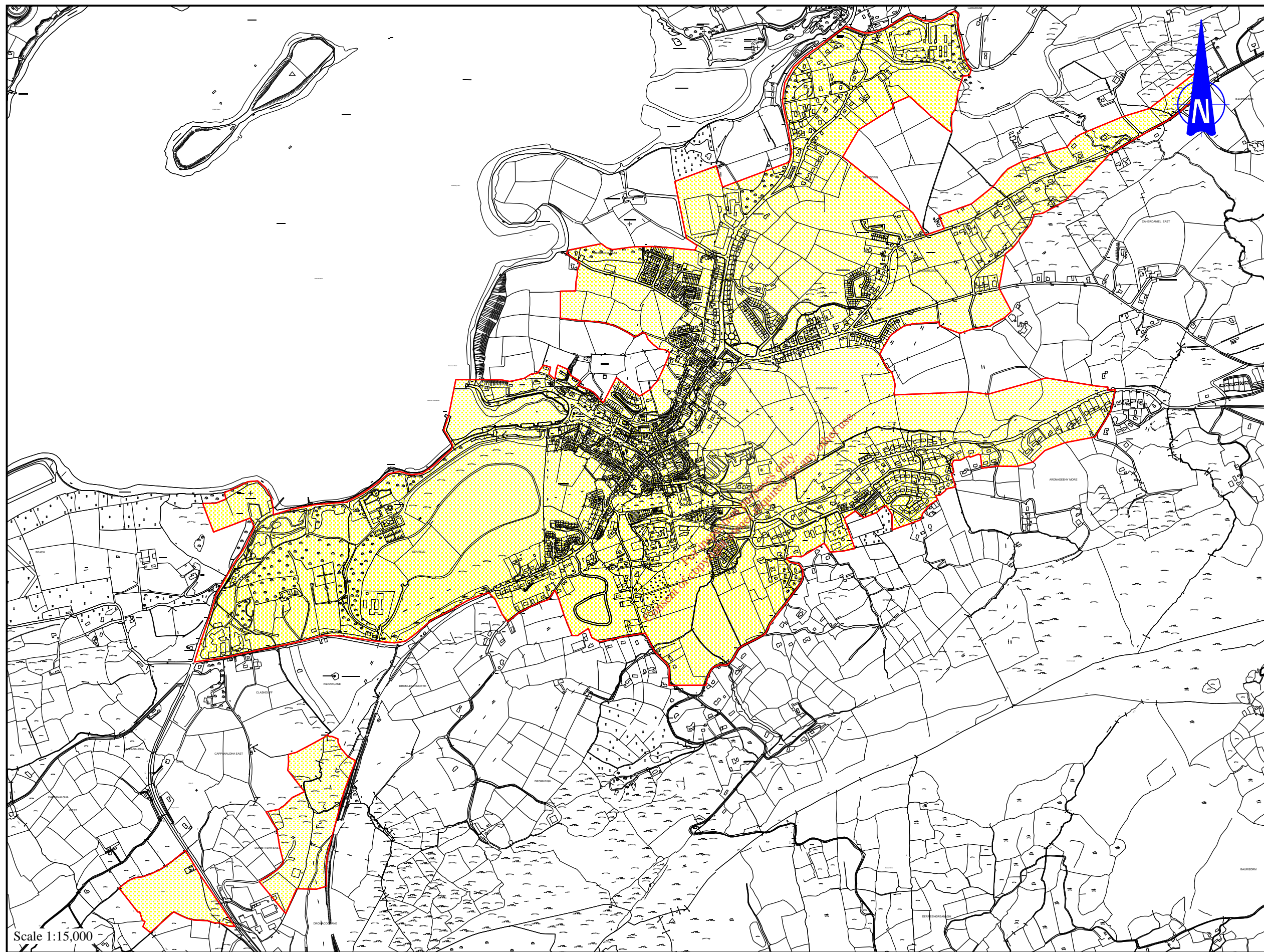


ATTACHMENTS TABLE OF CONTENTS:

ATTACHMENT	MAP Nr.	TITLE
B.1	MAP 1	BANTRY AGGLOMERATION
B.2	MAP 2	OLD QUAY PUMPING STATION SITE LOCATION PLAN
B.2	MAP 3	OLD QUAY PUMPING STATION SITE LAYOUT PLAN
B.2	MAP 4	PROPOSED BANTRY WWTP SITE LOCATION PLAN
B.2	MAP 5	PROPOSED BANTRY WWTP SITE LAYOUT PLAN
B.3	MAP 6	PRIMARY DISCHARGE LOCATION (SW1BANT)
B.3	MAP 7	FUTURE PRIMARY DISCHARGE LOCATION (SW1-FUTURE)
B.4	MAP 8	SECONDARY DISCHARGE LOCATION (SW2BANT)
B.4	MAP 9	SECONDARY DISCHARGE LOCATIONS (SW3BANT & SW4BANT)
B.4	MAP 10	SECONDARY DISCHARGE LOCATIONS (SW5BANT)
B.4	MAP 11	SECONDARY DISCHARGE LOCATIONS (SW6BANT)
B.4	MAP 12	DISCHARGE LOCATIONS OVERVIEW
B.5	MAP 13	STORMWATER OVERFLOW LOCATIONS (SW7BANT & SW8BANT)
B.6	TEXT	PART 8 PLANNING
B.8	MAP 14	LOCATION OF SITE NOTICE
B.8	TEXT	NEWSPAPER APPLICATION & SITE NOTICE
B.10	TEXT	WSIP 2007-2009
B.12	TEXT	FORESHORE LICENSE
C.2	MAP 15	PROPOSED PRIMARY OUTFALL DETAIL
C.2	MAP 16	STORM WATER OVERFLOW - WILLIAM STREET
C.2	MAP 17	STORM WATER OVERFLOW - MARINO STREET
D.2	TEXT	TABULAR DATA ON DISCHARGE POINTS
E.3	TEXT	TABULAR DATA ON MONITORING & DISCHARGE POINTS
F.1	TEXT	MISCELLANEOUS: Inner and Outer Bantry Bay Waterbody Report; Map Designated Shellfish Area – Bantry; Water Quality Data – Bantry Bay; Water Quality Management Plan for Bantry Bay.
EIS	TEXT	ENVIRONMENTAL IMPACT STATEMENT: EIS NTS.pdf EIS Section 1.pdf EIS Section 2.pdf EIS Section 3.pdf EIS Section 4.pdf

LEGEND

 AGGLOMERATION



Scale 1:15,000

Approved : _____

ATTACHMENT B.2
MAP 2

LEGEND

 OLD QUAY PUMP STATION SITE



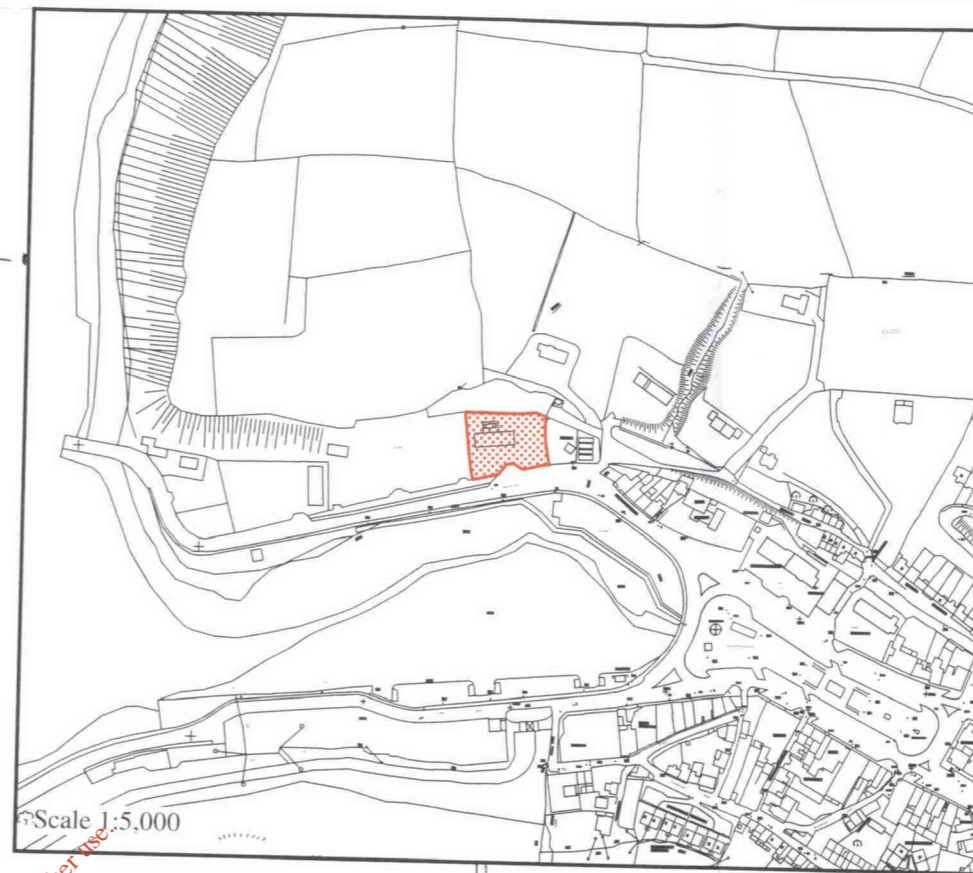
Scale 1:5,000

Approved : _____

ATTACHMENT B.2
MAP 3

LEGEND

 OLD QUAY PUMP STATION SITE



EXIST. FENCE LINE
(SEE NOTE 2)

INLET CHAMBER

TOP OF WAW = 3.856

6.163

+4.863

6.163

MH.101 COVER WL.=6.28
I.L.= -0.200

M.H. COVER WL.=6.373
INV. WL.= 2.353

EXIST. 450 ϕ EMERGENCY
OVERFLOW

6.393

CONC. SLAB TO WET WELL

6.408

EXIST. 900 ϕ S.W PIPE

M.H. I.L.= 5.463

EXISTING PUMPHOUSE
FFL.= 6.445

EXIST. M.H. COVER WL.=6.382
INV. WL.= 2.124

EXIST. 450 ϕ EMERGENCY
OVERFLOW

SEE DTL. 2

MH102 C.L.=6.24
I.L.= -0.120

EXIST. RISING MAIN

For inspection purposes only.
Consent of copyright owner required for any other use.

EXIST. M.H. I.L.=2.294

+6.124

EXIST. 750 ϕ INLET

EXIST. FENCE

EXIST. SHED

+6.563

+6.375

EXIST. 225 ϕ CONC.

EXIST. M.H. C.L.=6.045

C.L. 5.752
I.L.= 0.970

MH 103
I.L.= 0.400

EXIST. ϕ RISING MAIN

NOT TO SCALE

Approved : _____



MAP 3 - OLD QUAY PUMPING STATION SITE LAYOUT PLAN

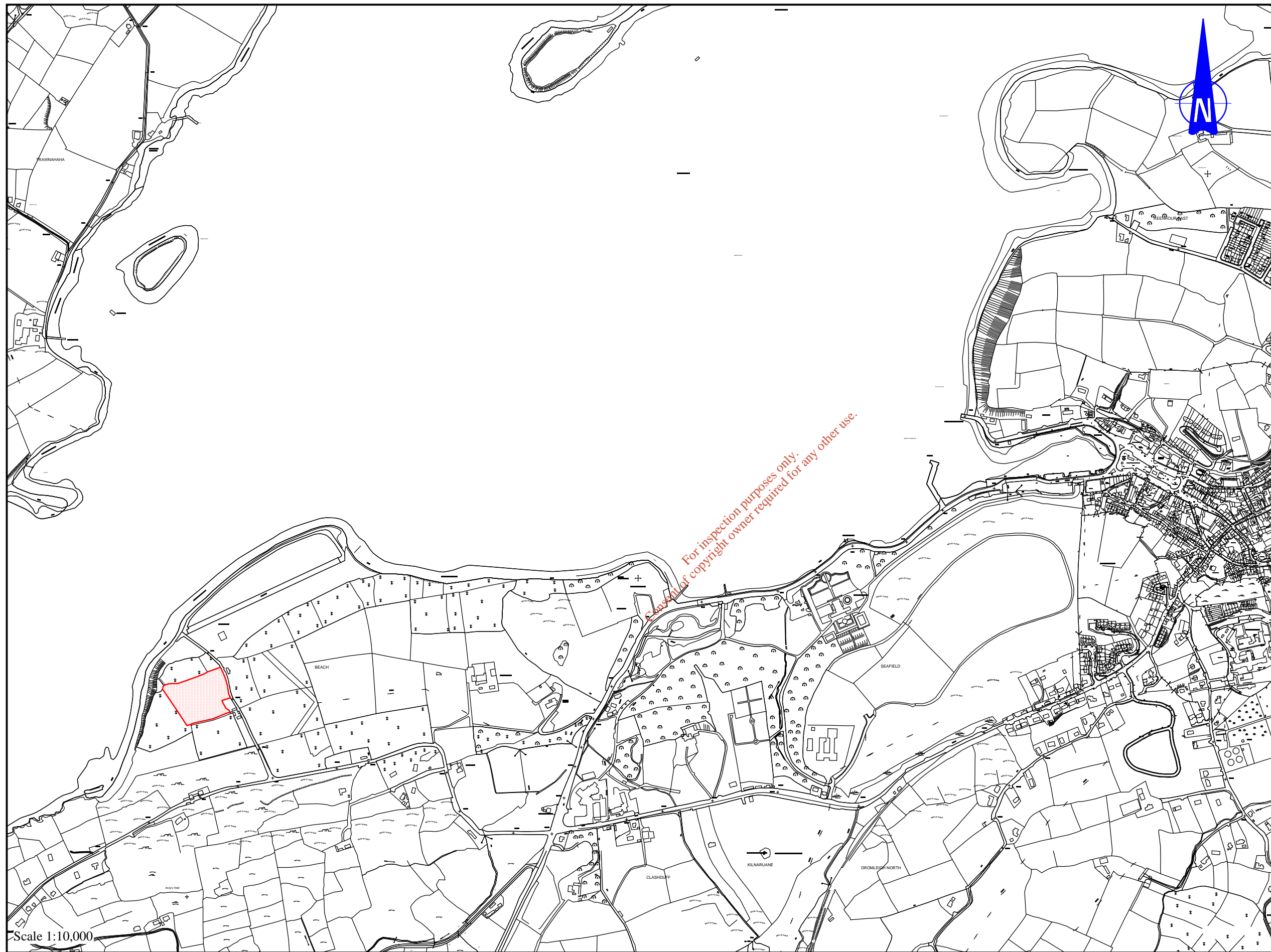
REVISION : A
DATE : SEPT. 2008

BANTRY WASTE WATER DISCHARGE LICENCE APPLICATION
CORK COUNTY COUNCIL
PROJECT Nr. 249234
P:\Cork\Design\acad\Mapinfo\249234\Workspaces\MAP_3.wor

ATTACHMENT B.2
MAP 4

LEGEND

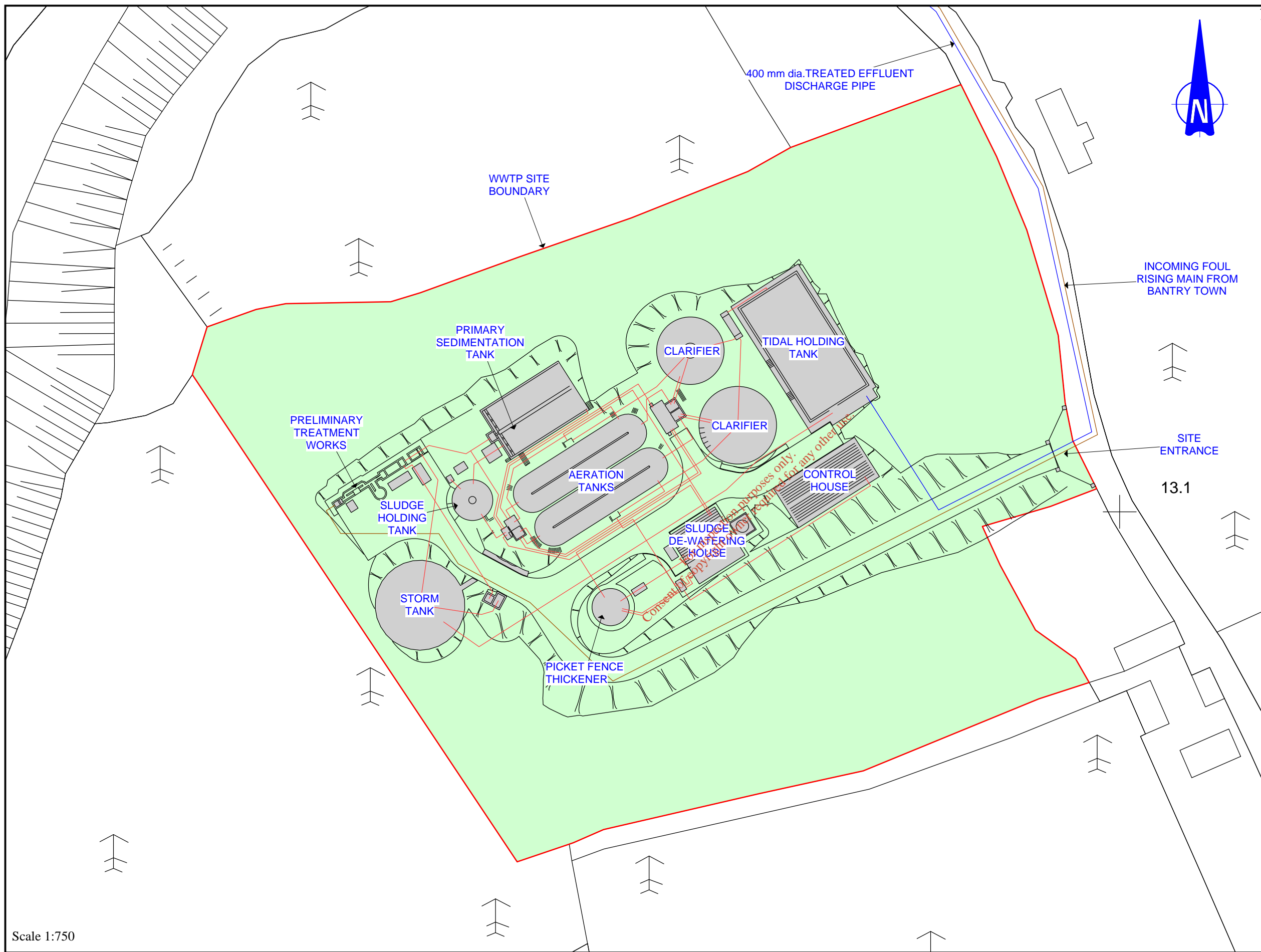
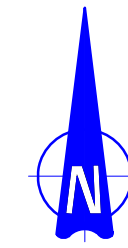
 FUTURE WWTP SITE



ATTACHMENT B.2
MAP 5

LEGEND

- BANTRY WWTP SITE
- INCOMING FOUL RISING MAIN
- WWTP PROCESS PIPEWORK
- TREATED EFFLUENT OUTFALL



Scale 1:750

Approved : _____

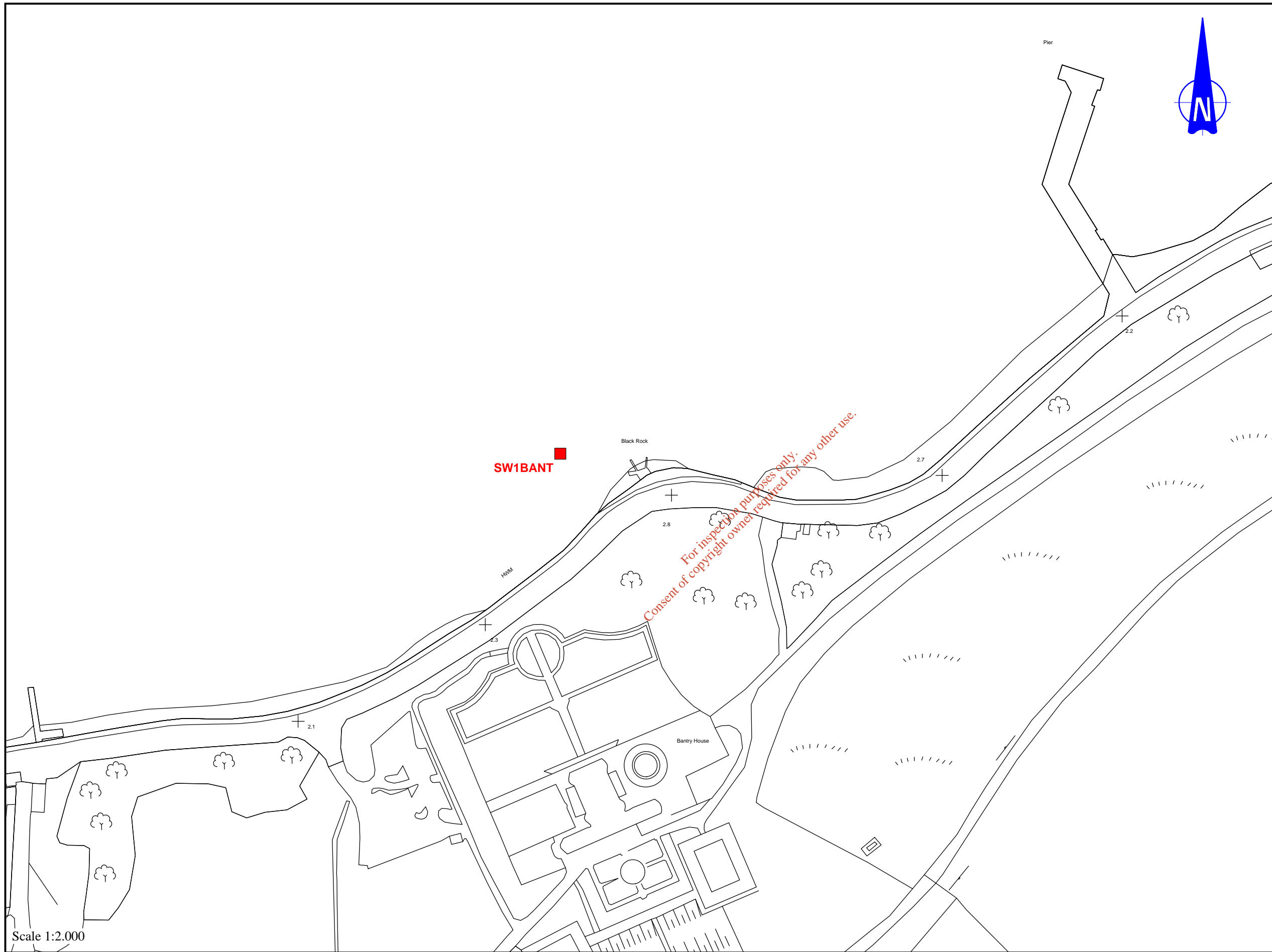


ATTACHMENT B.3
MAP 6

LEGEND

■ PRIMARY DISCHARGE LOCATION

Point	Easting	Northing
SW1BANT ■	098665	048326



ATTACHMENT B.3

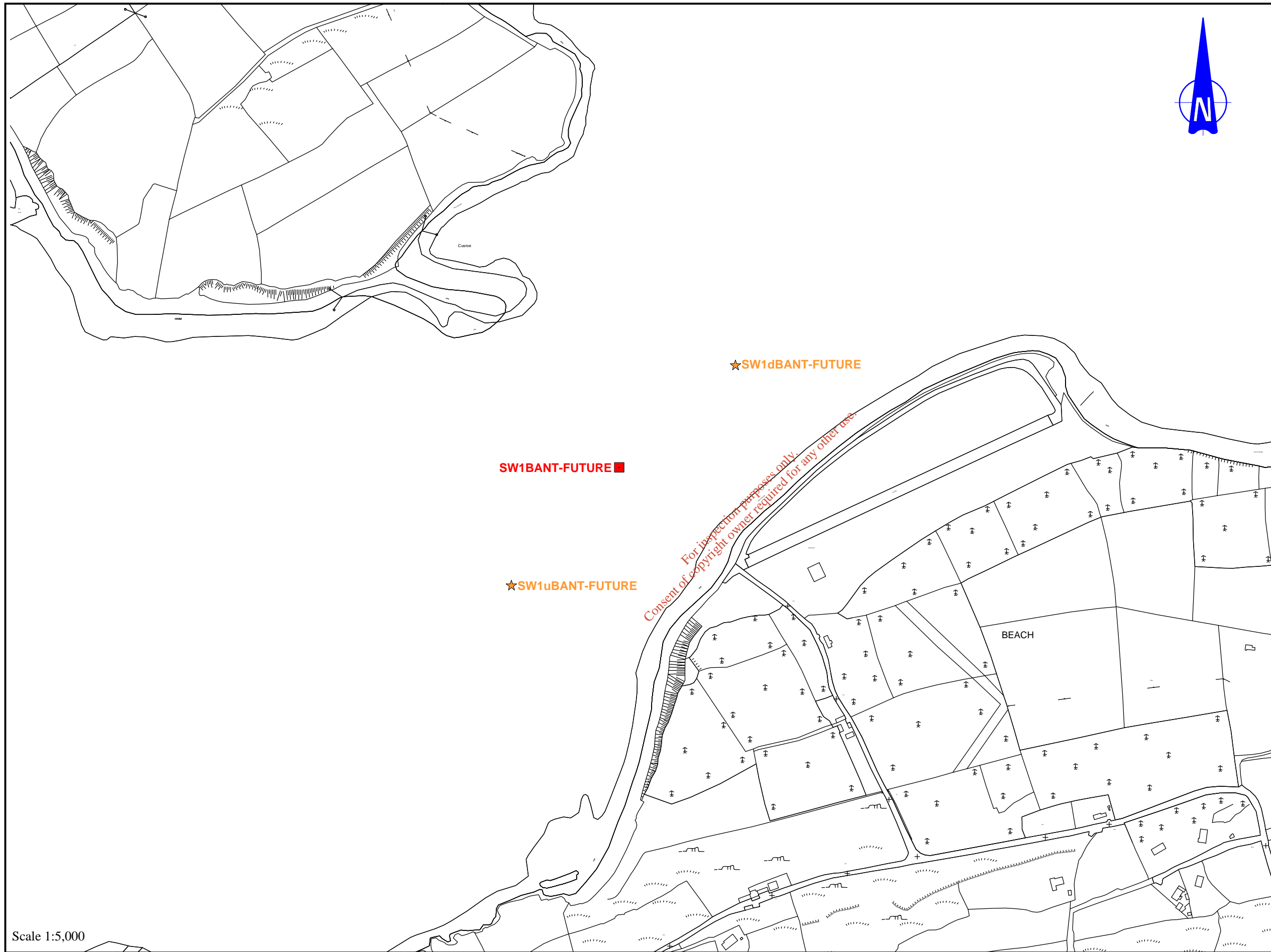
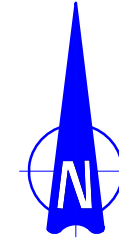
MAP 7

LEGEND

■ FUTURE PRIMARY DISCHARGE LOCATION

★ FUTURE MONITORING LOCATION

Point	Easting	Northing
SW1BANT-FUTURE ■	096802	048205
SW1uBANT-FUTURE ★	096660	048050
SW1dBANT-FUTURE ★	096955	048340



Scale 1:5,000

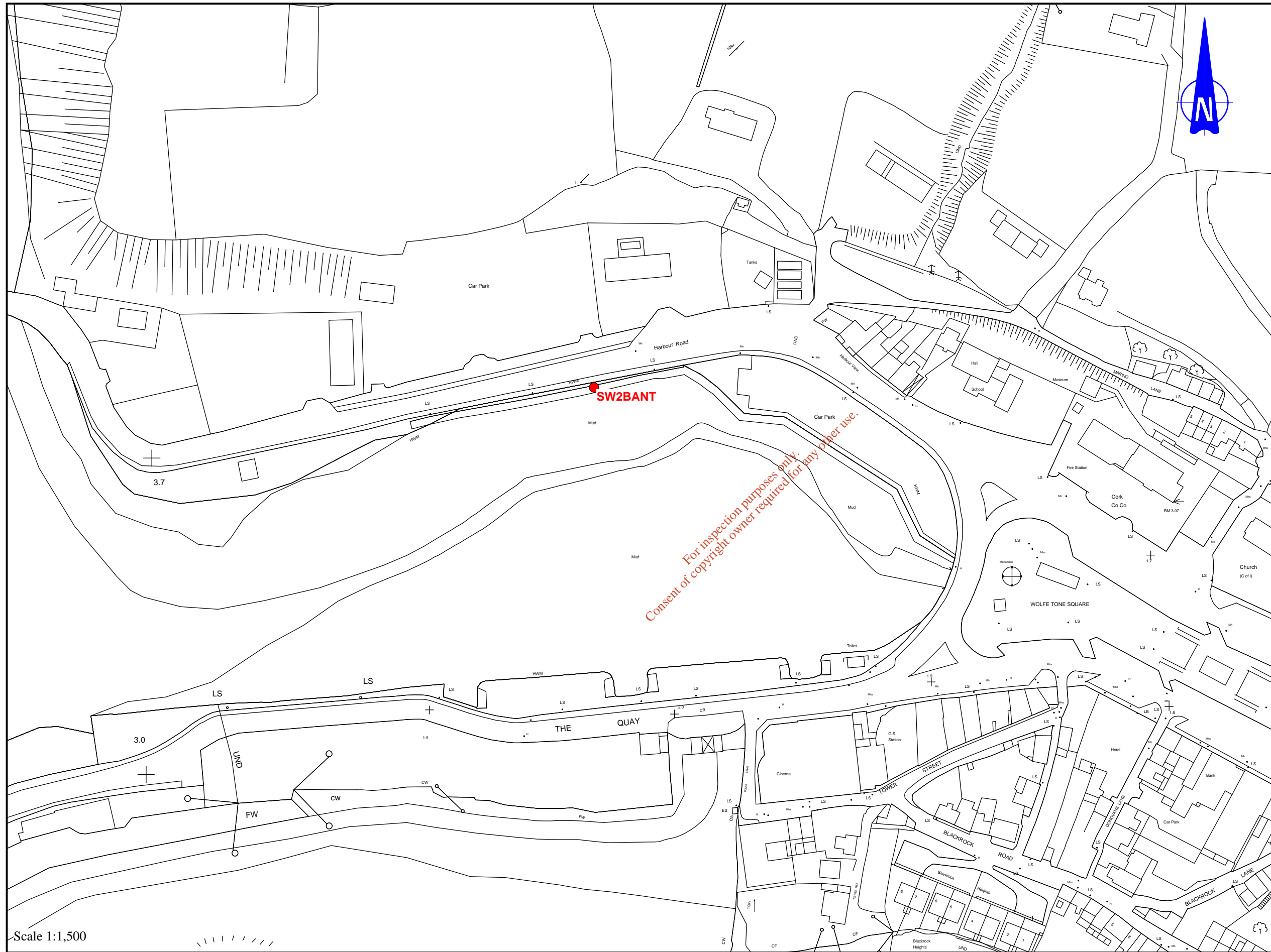
Approved : _____

ATTACHMENT B.4
MAP 8

LEGEND

- SECONDARY DISCHARGE LOCATION

Point	Easting	Northing
SW2BANT ●	099274	048609



Scale 1:1,500

Approved : _____

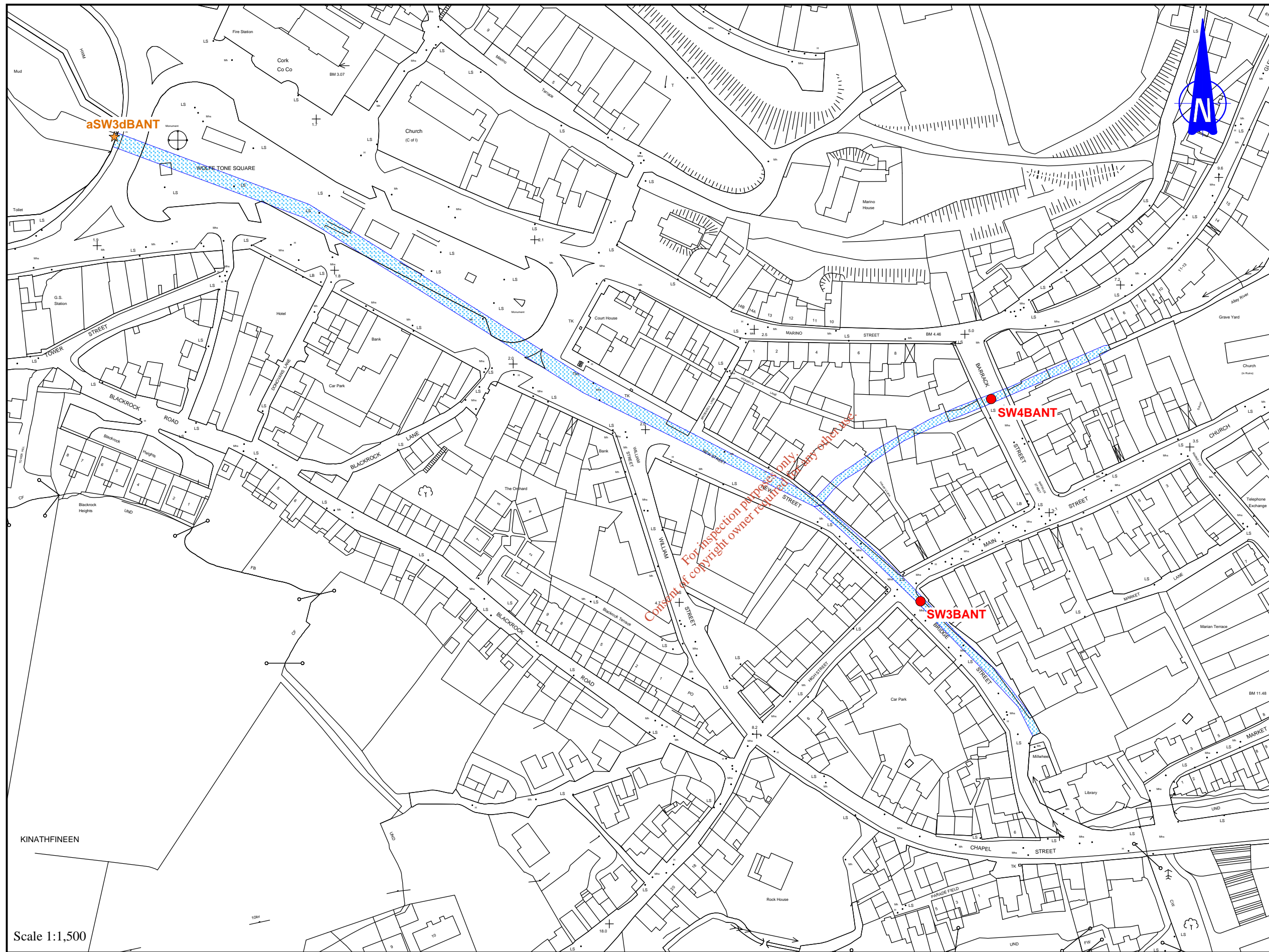
ATTACHMENT B.4
MAP 9

LEGEND

- SECONDARY DISCHARGE LOCATION
- ★ MONITORING LOCATION
- ▨ CULVERTED STREAM

Point	Easting	Northing
SW3BANT ●	099733	048352
SW4BANT ●	099761	048432
SW3dBANT ★	099414	048536

NOTE:
The precise locations of SW3BANT and SW4BANT are not currently known. They are believed to be discharging to existing culverts in the vicinity of Bridge Street and Barrack Street respectively.



Scale 1:1,500

Approved : _____

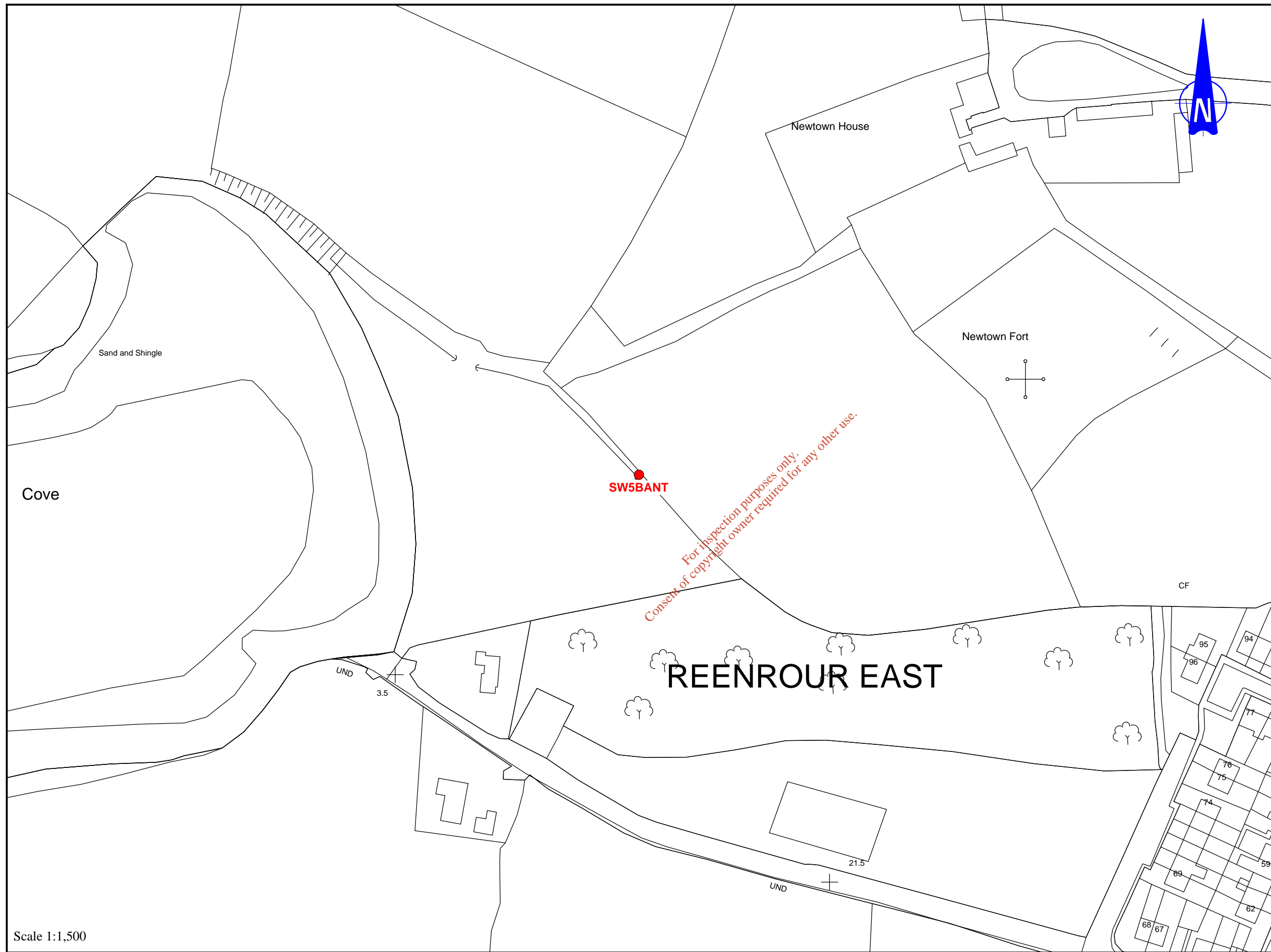
ATTACHMENT B.4

MAP 10

LEGEND

- SECONDARY DISCHARGE LOCATION

Point	Easting	Northing
SW5BANT ●	099507	049248



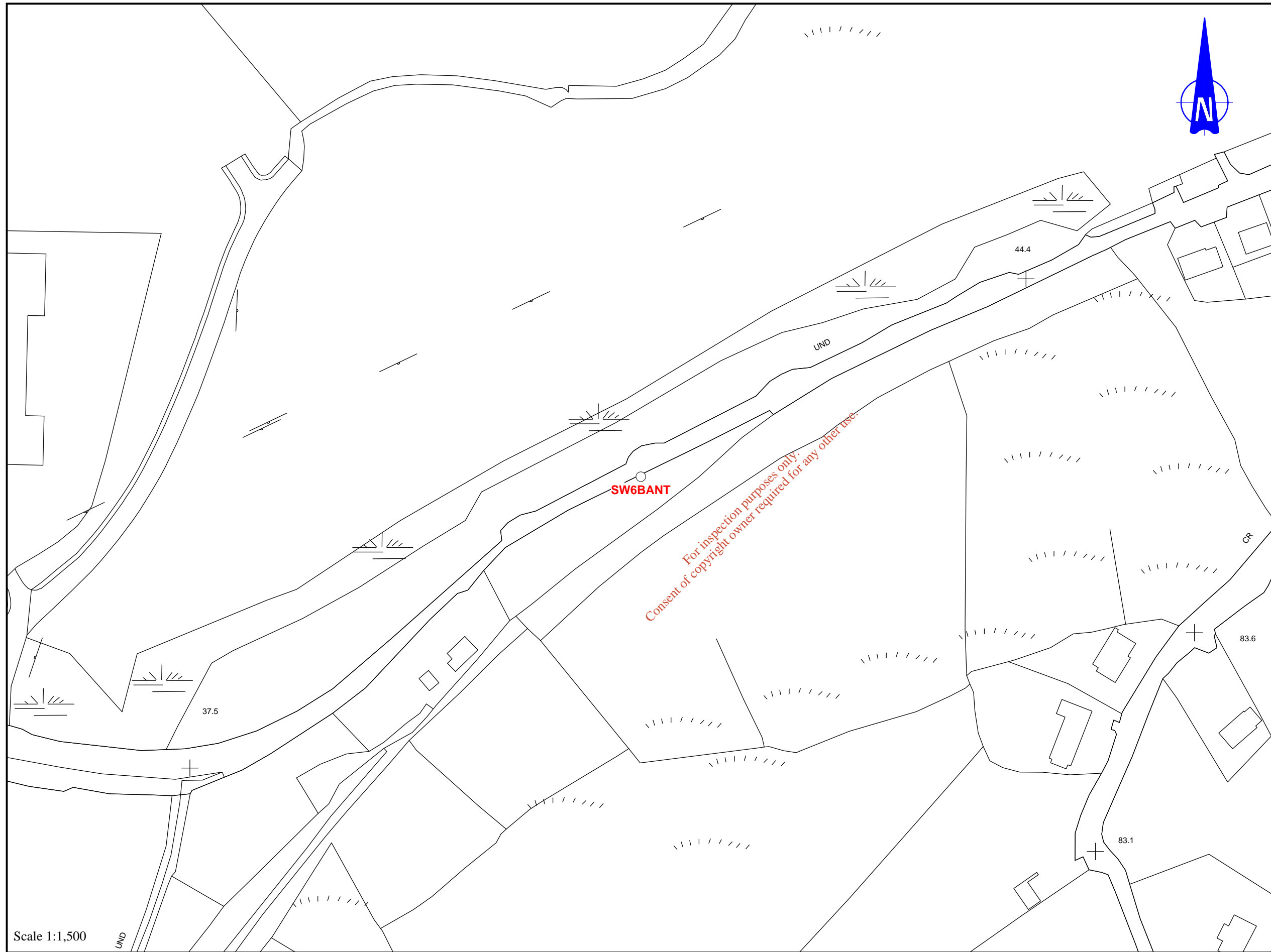
ATTACHMENT B.4

MAP 11

LEGEND

- SECONDARY DISCHARGE LOCATION

Point	Easting	Northing
SW6BANT ●	098918	047734



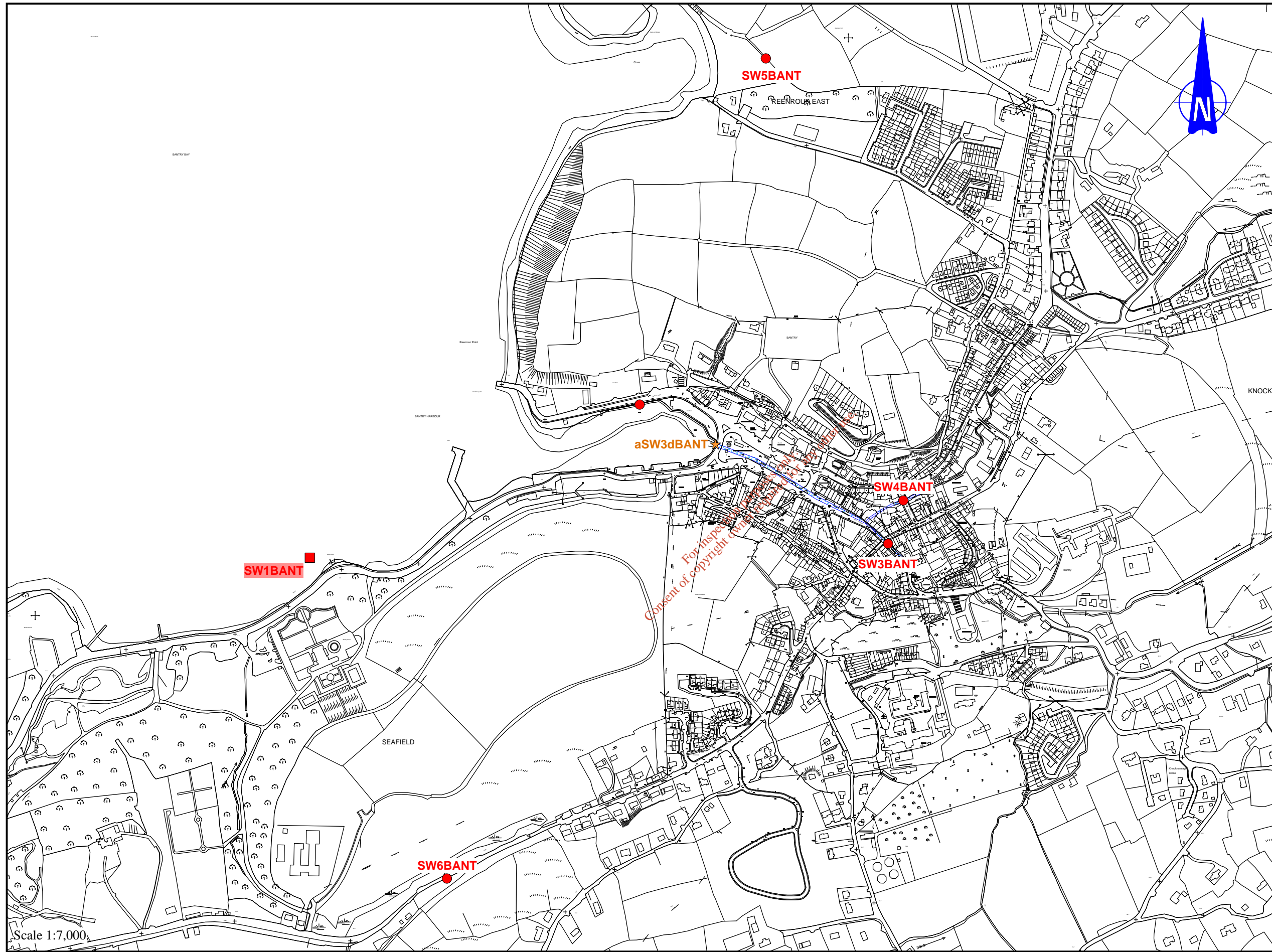
Scale 1:1,500

Approved : _____

ATTACHMENT B.4
MAP 12

LEGEND

- PRIMARY DISCHARGE LOCATION
- SECONDARY DISCHARGE LOCATION
- ★ MONITORING LOCATION
- CULVERTED STREAM



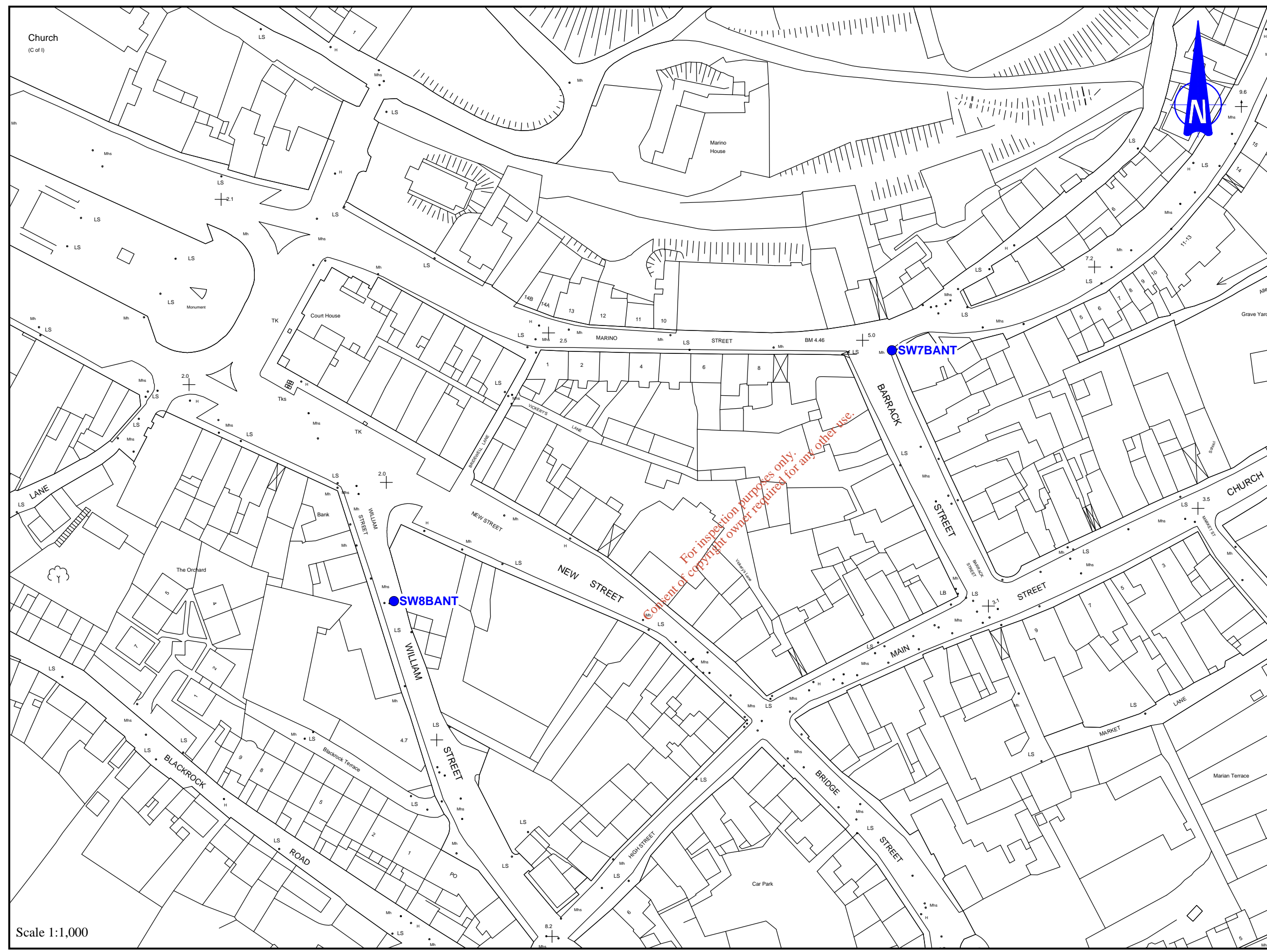
Approved : _____

ATTACHMENT B.5
MAP 13

LEGEND

- STORMWATER OVERFLOW LOCATION

Point	Easting	Northing
SW7BANT ●	099758	048455
SW8BANT ●	099626	048388



Approved : _____



MAP 13 - STORMWATER OVERFLOW LOCATIONS (SW7BANT & SW8BANT)

REVISION : A
DATE : SEPT. 2008

BANTRY WASTE WATER DISCHARGE LICENCE APPLICATION
CORK COUNTY COUNCIL
PROJECT Nr. 249234
P:\Cork\Design\acad\Mapinfo\249234\Workspaces\MAP_13.wor

Attachment B.6

Planning Approval

*For inspection purposes only.
Consent of copyright owner required for any other use.*

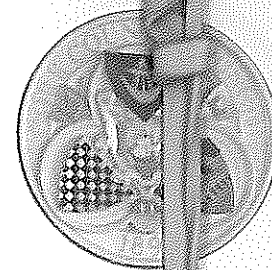
Comhairle Chontae Chorcaí Cork County Council

County Hall,
Cork, Ireland.

Tel. No: (021) 4276891

Fax No: (021) 4276321

Web: <http://www.corkcoco.com/>



Ms. Helen O'Donovan,
Cork County Council,
Kent Street,
Clonakilty,
Co. Cork.



17th January, 2003.

Re: Report under Article 81 of the Local Government (Planning and Development) Regulations 2001

The addition of 2 no. settlement tanks and 1 no. sludge holding tank to the treatment plant at Beach, Bantry

I refer to your letter dated 2nd December, 2002.

At the meeting of Cork County Council held on 13th January, 2003, the recommendation of the Western Committee was approved.

**MAURICE MANNING,
SENIOR EXECUTIVE OFFICER,
CORPORATE AFFAIRS.**

Part 8 for settlement
tanks approved by
CCC at meeting
of 13/Jan/2003

Attachment B.8 Site Notice & Newspaper Advertisement

*For inspection purposes only.
Consent of copyright owner required for any other use.*

Newspaper Advertisement

Cork County Council Western Division

APPLICATION TO THE ENVIRONMENTAL PROTECTION AGENCY FOR A WASTE WATER DISCHARGE LICENCE

In accordance with the Waste Water Discharge (Authorisation) Regulations 2007, S.I. No. 684 of 2007, Water Services (Western Division), Cork County Council, Courthouse, Skibbereen, Co. Cork is applying to the Environmental Protection Agency for a Waste Water Discharge Licence for Bantry Agglomeration, Bantry, Co. Cork at the following locations:

Discharge Type	Function	Townland	Receptor	Grid Reference
Primary	Main Outfall	Seafield	Bantry Harbour	E098665 N048326
Secondary	Minor Outfall	Reenrou West	Alley River	E099761 N048432
Secondary	Minor Outfall	Town Lots	Mill River	E099733 N048352
Secondary	Emergency	Town Lots	Bantry Harbour	E099274 N048609
Secondary	Emergency	Reenrou West	Cove	E099507 N049248
Secondary	Emergency	Seafield	Local Stream	E098918 N047734

Cork County Council proposes to provide a wastewater treatment plant at Beach, Bantry, Co. Cork, Grid Reference (E096147, N050148). It is proposed to discharge treated wastewater from this plant to Bantry Harbour. The proposed location is detailed in the table below:

Discharge Type	Function	Townland	Receptor	Grid Reference
Primary	Main	Beach	Bantry Harbour	E096802, N048205

It is intended to submit the Environmental Impact Statement associated with the proposed provision of a Waste Water Treatment Plant in Bantry to the Agency along with the Application.

A copy of the application for the Waste Water Discharge Licence, the Environmental Impact Statement and such further information relating to the application as may be furnished to the Agency in the course of the Agency's consideration of the Application shall as soon as is practicable after receipt by the Agency be available for inspection or purchase at the

- Environmental Protection Agency, PO Box 3000, Johnstown Castle Estate, Co. Wexford, Lo Call 1890 335599 Telephone: 053-9160600 Fax: 053-9160699 Email: info@epa.ie

and at

- Cork County Council Water Services, Courthouse, Skibbereen, Co. Cork. Telephone: (028)21299 Fax: (028)21995.

Submissions in relation to the application may be made to the Environmental Protection Agency at its headquarters described above.



CORK COUNTY COUNCIL

SITE NOTICE

APPLICATION TO THE ENVIRONMENTAL PROTECTION AGENCY FOR A WASTEWATER DISCHARGE LICENCE

In accordance with the Waste Water Discharge (Authorisation) Regulations 2007, S.I. No. 684 of 2007, Water Services (Western Division), Cork County Council, Courthouse, Skibbereen, Co. Cork is applying to the Environmental Protection Agency for a Waste Water Discharge Licence for Bantry Agglomeration, Bantry, Co. Cork at the following locations:

Discharge Type	Function	Townland	Receptor	Grid Reference
Primary	Main Outfall	Seafield	Bantry Harbour	E098665 N048326
Secondary	Minor Outfall	Reenroun West	Alley River	E099761 N048432
Secondary	Minor Outfall	Town Lots	Mill River	E099733 N048352
Secondary	Emergency	Town Lots	Bantry Harbour	E099274 N048609
Secondary	Emergency	Reenroun West	Cove	E099507 N049248
Secondary	Emergency	Seafield	Local Stream	E098918 N047734

Cork County Council proposes to provide a wastewater treatment plant at Beach, Bantry, Co. Cork, Grid Reference (E096147, N050148). It is proposed to discharge treated wastewater from this plant to Bantry Harbour. The proposed location is detailed in the table below:

Discharge Type	Function	Townland	Receptor	Grid Reference
Primary	Main	Beach	Bantry Harbour	E096802, N048205

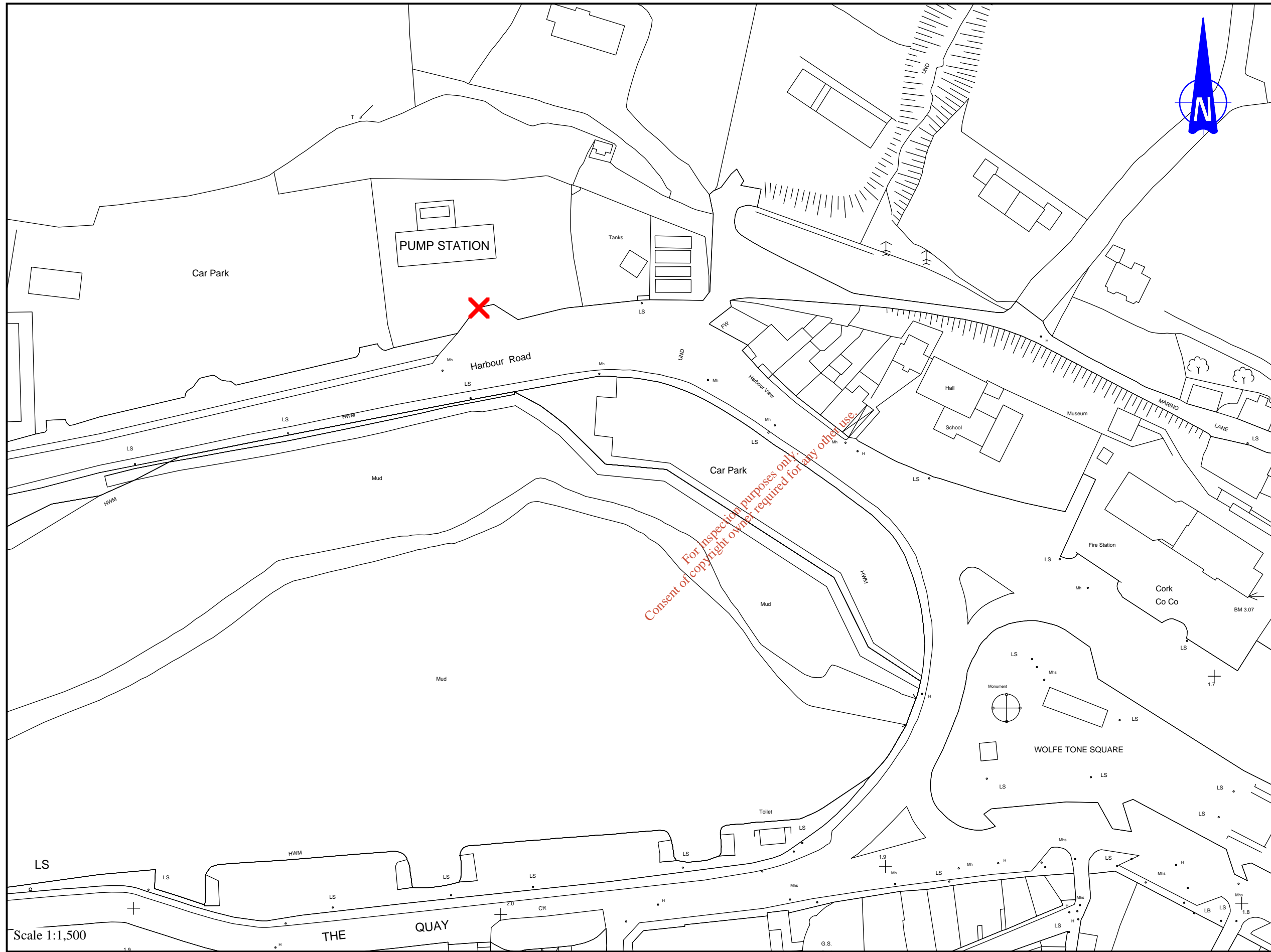
It is intended to submit the Environmental Impact Statement associated with the proposed provision of a Waste Water Treatment Plant in Bantry to the Agency along with the Application.

A copy of the application for the Waste Water Discharge Licence, the Environmental Impact Statement and such further information relating to the application as may be furnished to the Agency in the course of the Agency's consideration of the Application shall as soon as is practicable after receipt by the Agency be available for inspection or purchase at the

- Environmental Protection Agency, PO Box 3000, Johnstown Castle Estate, Co. Wexford, Lo Call 1890 335599 Telephone: 053-9160600 Fax: 053-9160699 Email: info@epa.ie
- and at
- Cork County Council Water Services, Courthouse, Skibbereen, Co. Cork. Telephone: (028)21299 Fax: (028)21995.

Submissions in relation to the application may be made to the Environmental Protection Agency at its headquarters described above.

ATTACHMENT B.8
MAP 14



Description	Easting	Northing
SITE NOTICE LOCATION	099300	048640

Scale 1:1,500

Approved : _____

Attachment B.10 Capital Investment Programme

*For inspection purposes only.
Consent of copyright owner required for any other use.*

Carlow

Water Services Investment Programme 2007 - 2009

Schemes to start 2007	W/S	Est. Cost.
Carlow North Regional Water Supply Scheme Stage 2 (Advance Works)	W	1,100,000 1,100,000
Schemes to start 2008		
Carlow Surface Water Drainage	S	19,260,000
Tullow/Hacketstown/Rathvilly Wastewater Treatment Plants ¹	S	6,000,000 25,260,000
Schemes to start 2009		
Carlow North Regional Water Supply Scheme Stage 2 (Main Scheme)	W	33,000,000 33,000,000
Serviced Land Initiative		
Kernanstown to John Sweeney Park Sewerage Scheme	S	735,000 735,000
Schemes to Advance through Planning		
Carlow Sludge Management	S	4,326,000
Carlow Town Wastewater Treatment Plant Phase 2	S	15,000,000
Muinebeag Sewerage Scheme	S	4,000,000
Muinebeag Water Supply Scheme	W	1,000,000 24,326,000
Water Conservation Allocation		7,342,000
Asset Management Study		50,000
South Eastern River Basin District (WFD) Project²		11,200,000
Programme Total		103,013,000

¹ Scheme expanded since 2005-2007 Programme to include Hacketstown/Rathvilly

² This project is being led by Carlow County Council on behalf of other authorities in the River Basin District

For inspection purposes only.
Consent of copyright owner required for any other use.

Cavan

Water Services Investment Programme 2007 - 2009

Schemes at Construction	W/S	Est. Cost.
Kingscourt Sewerage/Water Supply Scheme (Grouped DBO)	W/S	15,700,000
		15,700,000
Schemes to start 2007		
Cavan & Cootehill Regional Water Supply Scheme Stage 2	W	10,000,000
Mountnugent, Stradone & Crosskeys Sewerage Scheme (Grouped DBO)	S	2,700,000
		12,700,000
Schemes to start 2008		
Ballyconnell Public Water Supply Scheme	W	10,500,000
Bellanagh & Kilnaleck Sewerage Scheme	S	4,000,000
		14,500,000
Schemes to start 2009		
Bailieborough Regional Water Supply Scheme (Treatment Works and Network)	W	10,500,000
Cavan Sewerage Scheme incl. Sludge Management (H)	S	30,000,000
Virginia & Bailieborough Sewerage Scheme Extension Stage 2	S	8,000,000
		48,500,000
Schemes to Advance through Planning		
Ballyjamesduff Regional Water Supply Scheme (Ext. to Ballenagh)	W	8,000,000
Belturbet Water Supply Scheme (Treatment Upgrade)	W	5,000,000
Shercock Water Supply Scheme	W	2,000,000
		15,000,000
Water Conservation Allocation		1,300,000
Asset Management Study		50,000
Programme Total		107,750,000

(H) Refers to a Hub as designated in the National Spatial Strategy

Clare

Water Services Investment Programme 2007 - 2009

Schemes at Construction	W/S	Est. Cost.
Ennis Town Water Supply Scheme Augmentation (H)	W	6,335,000
		6,335,000
Schemes to start 2007		
Ennis Town Water Supply Scheme (Treatment) (H)	W	6,819,000
Lisdoonvarna Water Supply Scheme Stage 2 (Ext. to Ballyvaughan)	W	5,768,000
Newmarket on Fergus Water Supply Scheme (excl. Advance Works)	W	5,624,000
		18,211,000
Schemes to start 2008		
Ballyvaughan*, Corofin* & Doolin Sewerage Scheme	S	18,025,000
Carrigaholt/Labasheeda Sewerage Scheme	S	12,000,000
Clare Sludge Management Plan (H)	S	5,624,000
Cooraclare Sewerage Scheme	S	1,570,000
Ennistymon, Liscannor, Miltown Malbay & Spanish Point Sewerage Scheme	S	12,875,000
Kilkee & Kilrush Sewerage Schemes	S	12,556,000
O'Callaghan's Mills, Bodyke, O'Brien's Bridge, Flagmount and Cratloe Sewerage Scheme	S	7,581,000
Quilty, Scarriff & Feakle* Sewerage Scheme	S	12,240,000
Shannon Town Sewerage Scheme (G)	S	9,775,000
West Clare Regional Water Supply Scheme (Contract 6)	W	9,200,000
		101,446,000
Schemes to start 2009		
Ennis Clarecastle Sewerage Scheme (H)	S	57,800,000
		57,800,000
Serviced Land Initiative		
Clarecastle Water Supply & Sewerage Scheme	W/S	5,134,000
Clonlara Sewerage Scheme	S	2,418,000
Inagh Sewerage Scheme	S	946,000
Tulla Water Supply & Sewerage Scheme	W/S	1,257,000
		9,755,000
Rural Towns & Villages Initiative		
Ballyvaughan Sewerage Scheme*	S	-
Broadford Sewerage Scheme	S	1,561,000
Corofin Sewerage Scheme*	S	-
Feakle Sewerage Scheme*	S	-
*Listed with Grouped Schemes above		1,561,000
Schemes to Advance through Planning		
Castlelake Water Supply Scheme	W	21,000,000
Kilfenora Sewerage Scheme	S	840,000
Killaloe Sewerage Scheme	S	1,500,000
North Clare (Eastern Area) Water Supply Scheme	W	8,000,000
South East Clare Grouped Sewerage Scheme (Blackwater, Parkroe, Gillogue, Parteen, Athlunkard, Ardnacrusa, Larkyle, Ballycannon, Meelick, Montpelier)	S	7,601,000
		38,941,000
Water Conservation Allocation		2,000,000
Asset Management Study		100,000
Programme Total		236,149,000

For inspection purposes only.
Consent of copyright owner required for any other use.

(H) Refers to a Hub as designated in the National Spatial Strategy

(G) Refers to a Gateway as designated in the National Spatial Strategy

Cork County

Water Services Investment Programme 2007 - 2009

Schemes at Construction	W/S	Est. Cost	Schemes to start 2009 contd.	W/S	Est. Cost
Cork North			Cork South		
Mitchelstown Sewerage Scheme (Nutrient Removal)	S	221,000	Ballincollig Sewerage Scheme (Upgrade) (G)	S	22,248,000
Cork South			Cork Lower Harbour Sewerage Scheme (excl. Crosshaven SS)	S	73,542,000
Ballyvourney/ Ballymakeery Sewerage Scheme	S	3,049,000	Shannagarry/ Garryvoe/ Ballycotton Sewerage Scheme	S	3,780,000
Cobh/ Midleton/ Carrigtwohill Water Supply Scheme	W	10,135,000	Youghal Sewerage Scheme	S	14,420,000
Cork Lower Harbour Sewerage Scheme (Crosshaven SS) (G)	S	4,850,000	Cork West		
Cork Water Strategy Study (G)	W	941,000	Ballydehob Sewerage Scheme	S	683,000
Kinsale Sewerage Scheme	S	20,000,000	Bantry Water Supply Scheme	W	14,935,000
Midleton Sewerage Scheme (Infiltration Reduction) (G)	S	2,078,000	Clonakilty Sewerage Scheme (Plant Capacity Increase)	S	3,677,000
		41,274,000	Courtmacsherry/ Timoleague Sewerage Scheme	S	2,472,000
Schemes to start 2007			Dunmanway Regional Water Supply Scheme Stage 1	W	12,669,000
					164,629,000
Cork North			Serviced Land Initiative		
North Cork Grouped DBO Wastewater Treatment Plant (Buttevant, Doneraile & Kilbrin)	S	5,150,000	Cork North		
Cork West			Ballycough Water Supply Scheme	W	139,000
Skibbereen Sewerage Scheme	S	20,000,000	Ballyhooley Improvement Scheme	W/S	139,000
		25,150,000	Broghill-Rathgoggin Sewerage Scheme	S	406,000
Schemes to start 2008			Bweang Water Supply Scheme	W	115,000
Cork North			Churchtown Sewerage Scheme (incl. Water)	W/S	543,000
Mallow/ Ballyvinner Regional Water Supply Scheme (H) W		8,662,000	Clondulane Sewage Treatment Plant	S	417,000
Mallow Sewerage Scheme (H)	S	3,408,000	Freemount Sewerage Scheme	S	150,000
Cork South			Pike Road Sewerage Scheme (incl. Water)	W/S	2,080,000
Ballincollig Sewerage Scheme (Nutrient Removal) (G)	S	948,000	Rathcormac Sewerage Scheme (incl. Water)	W/S	555,000
Ballingeary Sewerage Scheme	S	1,296,000	Spa Glen Sewerage Scheme	S	736,000
Bandon Sewerage Scheme Stage 2	S	14,729,000	Uplands Fermoy Sewerage Scheme (incl. Water)	W/S	1,174,000
City Environs (CASP) Strategic Study (G)	S	153,000	Watergrasshill Water Supply Scheme (incl. Sewerage) (G)	W/S	4,151,000
Cloghroe Sewerage Scheme (Upgrade)	S	683,000	Cork South		
Coachford Water Supply Scheme	W	1,318,000	Ballincollig Sewerage Scheme (Barry's Rd Foul and Storm Drainage) (G)	S	1,164,000
Garretstown Sewerage Scheme	S	2,153,000	Belgooley, Water Supply Scheme (incl. Sewerage)	W/S	2,913,000
Inniscarra Water Treatment Plant Extension Phase 1	W	2,678,000	Blarney Water Supply Scheme (Ext. to Station Rd) (G)	W	416,000
Little Island Sewerage Scheme (G)	S	2,200,000	Carrigtwohill Sewerage Scheme (Treatment and Storm Drain) (G)	S	7,632,000
Cork West			Castlematyr Wastewater Treatment Plant Extension	S	1,200,000
Bantry Sewerage Scheme	S	7,148,000	Crookstown Sewerage Scheme (incl. Water)	W/S	1,200,000
Dunmanway Sewerage Scheme	S	2,153,000	Dripsey Water Supply Scheme (incl. Sewerage)	W/S	1,112,000
Leap/ Baltimore Water Supply Scheme	W	6,365,000	Glounthane Sewerage Scheme (G)	S	1,576,000
Schull Water Supply Scheme	W	5,253,000	Innishannon Sewerage Scheme	S	277,000
		61,137,000	Innishannon Wastewater Treatment Plant	S	694,000
Schemes to start 2009			Kerrypike Sewerage Scheme	S	832,000
Cork North			Kerrypike Water Supply Scheme	W	416,000
Banteer/Dromahane Regional Water Supply Scheme	W	1,576,000	Killeagh Wastewater Treatment Plant Extension	S	1,200,000
Conna Regional Water Supply Scheme Extension	W	2,627,000	Killeagh Water Supply Scheme (includes Sewerage)	W/S	485,000
Cork NE Water Supply Scheme	W	4,326,000	Killeens Sewerage Scheme	S	420,000
Cork NW Regional Water Supply Scheme	W	6,046,000	Kinagleary Sewerage Scheme	S	694,000
Millstreet Wastewater Treatment Plant (Upgrade)	S	1,628,000	Midleton Wastewater Treatment Plant Extension	S	4,050,000

Cork County contd.

Water Services Investment Programme 2007 - 2009

Serviced Land Initiative contd.	W/S	Est. Cost	Schemes to Advance through Planning cond.	W/S	Est. Cost
Cork South contd.			Cork South		
Mogeely, Castlemartyr & Ladysbridge Water Supply Scheme	W	2,566,000	Carrigtwohill Sewerage Scheme (G)	S	20,000,000
North Cobh Sewerage Scheme (G)	S	3,193,000	Cork Sludge Management (G)	S	14,420,000
Riverstick Water Supply Scheme (incl. Sewerage)	W/S	525,000	Cork Water Supply Scheme (Storage - Mount Emla, Ballincollig & Chetwind) (G)	W	8,500,000
Rochestown Water Supply Scheme	W	2,700,000	Inniscarra Water Treatment Plant (Sludge Treatment)(G)W		5,356,000
Saleen Sewerage Scheme	S	1,051,000	Macroom Sewerage Scheme	S	5,150,000
Youghal Water Supply Scheme	W	2,300,000	Minane Bridge Water Supply Scheme	W	1,421,000
Cork West			Cork West		
Castletownshend Sewerage Scheme	S	1,576,000	Bantry Regional Water Supply Scheme (Distribution)	W	9,455,000
		50,797,000	Cape Clear Water Supply Scheme	W	1,679,000
Rural Towns & Villages Initiative			Rural Towns & Villages Initiative		
Cork North			Cork North		
Buttevant Sewerage Scheme (Collection System)	S	2,446,000	Castletownbere Regional Water Supply Scheme	W	8,405,000
Doneraile Sewerage Scheme (Collection System)	S	1,738,000	Glengarriff Sewerage Scheme	S	2,500,000
			Roscarberry/Owenahincha Sewerage Scheme	S	1,576,000
			Skibbereen Regional Water Supply Scheme Stage 4	W	7,880,000
					95,646,000
Cork South			Water Conservation Allocation		
Innishannon (Ballinadee/ Ballinspittle/ Garrettstown) Water Supply Scheme	W	6,726,000	Asset Management Study		300,000
Cork West			South Western River Basin District (WFD) Project¹		
Ballylicky Sewerage Scheme	S	2,158,000			9,400,000
Baltimore Sewerage Scheme	S	3,162,000			
Castletownbere Sewerage Scheme	S	3,202,000			
Schull Sewerage Scheme	S	3,523,000			
		24,950,000	Programme Total		485,489,000
Schemes to Advance through Planning					
Cork North					
Mitchelstown North Galtees Water Supply Scheme	W	3,152,000			
Mitchelstown Sewerage Scheme	S	3,000,000			
Newmarket Sewerage Scheme	S	3,152,000			

¹ This project is being led by Cork County Council on behalf of other authorities in the River Basin District

(H) Refers to a Hub as designated in the National Spatial Strategy

(G) Refers to a Gateway as designated in the National Spatial Strategy

Cork City*

Water Services Investment Programme 2007 - 2009

Schemes to start 2008	W/S	Est. Cost
Cork City Sewerage Scheme (Telemetry)	S	1,051,000
Cork City Water Supply Scheme (Tivoli)	W	2,101,000
Cork City Water Supply Scheme (Shanakiel Reservoir)	W	4,265,000
Cork City Water Supply Scheme (Shanakiel Rising Main)	W	1,782,000
		9,199,000
Schemes to start 2009		
Lee Road Water Supply Scheme	S	15,300,000
		15,300,000
Serviced Land Initiative		
Blackrock Sewerage Scheme (Improvement in Services)	S	166,000
Mid Glanmire Road Sewerage Scheme (Improvement in Services)	S	167,000
		333,000
Schemes to Advance through Planning		
Cork City Water Supply Scheme (Reservoir Improvement Intermediate Level)	W	5,253,000
Docklands Sewerage Scheme	S	5,253,000
Docklands Water Supply Scheme	W	5,356,000
Wilton/Lee Road Water Supply Scheme (Trunk Main)	W	2,750,000
		18,612,000
Water Conservation Allocation		13,030,000
Asset Management Study		100,000
Programme Total		56,574,000

* All Cork City schemes have Gateway status as described in the National Spatial Strategy

For inspection purposes only.
Consent of copyright owner required for any other use.

Donegal

Water Services Investment Programme 2007 - 2009

Schemes at Construction	W/S	Est. Cost	Serviced Land Initiative	W/S	Est. Cost
Ballyshannon Sewerage Scheme	S	6,300,000	Bridgend Sewerage Scheme (G)	S	648,000
Donegal Bay Wastewater Treatment Plant - Group A (DBO Contract - incorporating part of Donegal, Ballyshannon and Rossnowlagh)	S	30,200,000	Brookfield (Donegal Town) Sewerage Scheme	S	1,350,000
Letterkenny Sewerage Scheme (G)	S	29,210,000	Church Rd Watermains Improvement Scheme	W	515,000
Letterkenny Water Supply Scheme (G)	W	4,000,000	Kilmacrennan Wastewater Treatment Plant (Upgrade)	S	104,000
Rossnowlagh Sewerage Scheme	S	5,000,000	St Johnston Wastewater Treatment Plant	S	323,000
		74,710,000			2,940,000
Schemes to start 2007			Rural Towns & Villages Initiative		
Desertegney Water Supply Scheme Stage 1 (Contract 3)	W	1,100,000	Ardara Sewerage Scheme	S	8,400,000
		1,100,000	Lagan Water Supply Scheme Phase 3	W	654,000
			Malin Town Sewerage Scheme	S	2,560,000
					11,614,000
Schemes to start 2008			Schemes to Advance through Planning		
Ballyshannon Water Supply Scheme	W	20,000,000	Ballybofey/Stranorlar Sewerage Scheme	S	4,200,000
Burtonport Sewerage Scheme	S	3,700,000	Buncrana Sewerage Scheme	S	4,900,000
Convoy Sewerage Scheme	S	1,150,000	Carrigart Sewerage Scheme	S	1,400,000
Donegal Bay Wastewater Treatment Plant - Group B (DBO Contract for Bundoran, Glencolmcille & Killybegs)	S	30,400,000	Castlefin Sewerage Scheme	S	1,700,000
Dungloe Sewerage Scheme	S	4,500,000	Stranfor Regional Water Supply Scheme	W	5,300,000
Falcarragh Sewerage Scheme	S	3,600,000	Dunfanaghy/Portnablagh Sewerage Scheme	S	1,700,000
Glenties Sewerage Scheme	S	3,100,000	Dunkineeley Sewerage Scheme	S	2,000,000
Gweedore Sewerage Scheme		26,000,000	Frosses/ Mountcharles/ Inver Water Supply Schemes	S	3,600,000
Killybegs Water Supply Scheme (Sludge Handling)	W	680,000	Inishowen Regional Water Supply Scheme	W	19,000,000
Lough Mourne/Letterkenny Water Supply Scheme (G)	W	42,200,000	Kilcar Sewerage Scheme	S	1,700,000
		135,330,000	Lettermacaward Regional Water Supply Scheme	W	4,400,000
			Lifford Sewerage Scheme	S	1,800,000
			Milford Sewerage Scheme	S	2,000,000
			Ramelton Sewerage Scheme	S	950,000
			Rosses Regional Water Supply Scheme	W	3,400,000
					58,050,000
Schemes to start 2009			Water Conservation Allocation		25,253,000
Fanad Water Supply Scheme Stage 2	W	9,800,000			
Gortahork/Falcarragh Water Supply Scheme	W	3,400,000	Asset Management Study		120,000
Inishowen Sludge Management	S	1,100,000			
Killybegs Sewerage Scheme (Network)	S	8,500,000	North South SHARE (WFD) Project¹		7,500,000
Laghey Sewerage Scheme	S	806,000			
Moville/Greencastle Sewerage Scheme	S	9,300,000	Programme Total		352,923,000
Rathmullan Sewerage Scheme	S	3,400,000			
		36,306,000			

¹ This project is being led by Donegal County Council on behalf of the other authorities in the SHARE Project

(G) Refers to a Gateway as designated in the National Spatial Strategy

Dublin City*

Water Services Investment Programme 2007 - 2009

Schemes at Construction	W/S	Est. Cost	Serviced Land Initiative	W/S	Est. Cost
Dublin North Fringe Water Supply Scheme (Silloque Storage)	W	13,312,000	Docklands Water and Sewerage Scheme	W/S	5,600,000
Dublin Reservoirs Covering Construction (Stillorgan Advance Works)	W	1,060,000			5,600,000
Dublin Reservoirs Covering Construction - Vartry	W	8,100,000	Schemes to Advance through Planning		
Saggart Water Supply Scheme (Chlorination)	W	1,630,000	City Centre Sewerage Scheme Feasibility Study	S	3,000,000
		24,102,000	Docklands Sewerage Scheme Feasibility Study	S	3,000,000
Schemes to start 2007			Dublin Water Supply Scheme (Ballycoolen to Cappagh Cross)	W	2,000,000
Ballymore Eustace Water Treatment Plant Stage 3	W	63,400,000	Dublin Water Supply Scheme - Longterm Source Planning	W	3,000,000
Dublin Water Supply Strategic Study (Lead in Water)	W	525,000	Rathmines & Pembroke Sewerage Scheme (Low Level Catchment Drainage Area Plan)	S	2,100,000
		63,925,000	Rathmines & Pembroke Sewerage Scheme (High Level Catchment Sewerage Works)	S	36,800,000
Schemes to start 2008			Ringsend Wastewater Treatment Plant (Extension)	S	66,000,000
Dargle Valley Water Supply Scheme (Watermain)	W	4,600,000	Saggart Water Supply Scheme (Storage Reservoir)	W	27,300,000
Dublin North City Water Supply Scheme (Arterial Watermain)	W	13,600,000	Stillorgan Reservoir Feasibility Study	W	300,000
Dublin Water Supply Strategic Study (Route of 3rd Watermain for Ballymore Eustace)	W	790,000			143,500,000
Nth King St Sewerage Scheme (Surface/Foul Separation)		830,000	Water Conservation Allocation¹		118,329,000
Relocation of Grand Canal Surface Water Outfall	S	13,700,000	Asset Management Study		250,000
Ringsend Sewerage Scheme (Main Lift Pumping Station)	S	4,200,000	Eastern River Basin District (WFD) Project²		12,200,000
Vartry Spillway Draw-off Pipework Upgrade	S	2,600,000	Programme Total		418,946,000
Vartry Spillway Modification Works	S	720,000			
		41,040,000			
Schemes to start 2009					
Ballyboden Water Supply Feasibility Study (Treatment/Reservoir Assessment)	W	500,000			
Vartry Tunnel Rehabilitation & Upgrade	W	9,500,000			
		10,000,000			

* All Dublin City Council schemes fall within the Greater Dublin Area as described in the National Spatial Strategy

¹ This is a composite allocation for Dublin City, Fingal, South Dublin, Dun Laoghaire-Rathdown, Bray and parts of Wicklow and Kildare

² This project is being led by Dublin City on behalf of the other authorities in the River Basin District

South Dublin*

Water Services Investment Programme 2007 - 2009

Schemes to start 2007	W/S	Est. Cost
Boherboy Water Supply Scheme	W	33,400,000 33,400,000
Serviced Land Initiative		
Boherboy Water Supply Scheme (Distribution Network)	W	5,300,000
Dodder Valley Catchment Sewerage Scheme	S	10,200,000
Lucan Water Supply and Sewerage Scheme (Development of Services)	W/S	31,800,000
Newcastle/ Rathcoole/ Saggart Water Supply and Sewerage Scheme (Development of Services)	W/S	5,170,000 52,470,000
Schemes to Advance through Planning		
Dublin Drainage Stage 1/Contract 9B Sewerage Scheme	S	22,150,000 22,150,000
Water Conservation Allocation¹		-
Asset Management Study		100,000
Programme Total		108,120,000

For inspection purposes only.
Consent of copyright owner required for any other use.

* All South Dublin County Council schemes fall within the Greater Dublin Area as described in the National Spatial Strategy

¹ See Dublin City for the Greater Dublin Area Allocation.

Dun Laoghaire-Rathdown*

Water Services Investment Programme 2007 - 2009

Schemes at Construction	W/S	Est. Cost
Dun Laoghaire Sewerage Scheme (Contracts 4a & 4b)	S	4,600,000
		4,600,000
Schemes to start 2007		
Shanganagh Wastewater Treatment Plant	S	76,000,000
		76,000,000
Schemes to start 2008		
Carysfort to Maretimo Sewerage Scheme (Stream Improvement)	S	2,950,000
Sandyford High Level Water Supply Scheme	W	24,400,000
		27,350,000
Schemes to start 2009		
Shanganagh Sewerage Scheme (Network)	S	15,700,000
		15,700,000
Serviced Land Initiative		
Glenamuck/ Kiltarnan Sewerage Scheme	S	2,700,000
Old Connaught/ Woodbrook Water & Sewerage Scheme	W/S	20,000,000
		22,700,000
Schemes to Advance through Planning		
Dodder Valley (Dundrum) Sewerage Scheme	S	7,000,000
Dun Laoghaire Sewerage Scheme Contract 4D (Rehabilitation)	S	13,700,000
Strategic Storage Studies (Ballyboden/Kiltalawn/Woodlawn/Sandyford/Ballyman)	S	2,200,000
		22,900,000
Water Conservation Allocation¹		-
Asset Management Study		100,000
Programme Total		169,350,000

* All Dun Laoghaire-Rathdown schemes fall within the Greater Dublin Area as described in the National Spatial Strategy

¹ See Dublin City for the Greater Dublin Area Allocation

Fingal*

Water Services Investment Programme 2007 - 2009

Schemes at Construction	W/S	Est. Cost
Ballycoolen Water Supply Scheme (Storage Reservoirs)	W	28,000,000
Dublin Bay Sewerage Scheme (Contract 5)	S	16,700,000
		44,700,000
Schemes to start 2007		
Leixlip/ Ballycoolen Water Supply Scheme (3rd Rising Main)	W	17,400,000
		17,400,000
Schemes to start 2008		
Balbriggan Water Supply Scheme	W	14,100,000
Leixlip Water Treatment Plant (Extension)	W	28,000,000
Swords North Water Supply Scheme (Watermain Strengthening)	W	10,200,000
		52,300,000
Schemes to start 2009		
Fingal Sludge Management	S	8,500,000
Portrane/ Donabate/ Rush/ Lusk Sewerage Scheme	S	62,400,000
		70,900,000
Schemes to Advance through Planning		
Blanchardstown Sewerage Scheme (Network)	S	21,000,000
Howth Water Supply Scheme (Network Improvements Phase 2)	W	680,000
Malahide Sewerage Scheme (Network)	S	4,000,000
Malahide Water Supply Storage Feasibility Study	W	1,500,000
Rural Villages Sewerage Scheme	S	3,000,000
Ward Water Supply Scheme	W	9,000,000
		39,180,000
Water Conservation Allocation¹		-
Asset Management Study		100,000
Programme Total		224,580,000

* All Fingal schemes fall within the Greater Dublin Area as described in the National Spatial Strategy

¹ See Dublin City for the Greater Dublin Area Allocation

Galway City*

Water Services Investment Programme 2007 - 2009

Schemes to start 2008	W/S	Est. Cost
Galway City Water Supply Scheme ¹	W	22,104,000
		22,104,000
Schemes to start 2009		
Galway Sewerage Scheme Stage 3	S	51,000,000
		51,000,000
Serviced Land Initiative		
Knocknacarra Sewerage Scheme Stage 4	S	5,300,000
Merlin Park Doughiska Sewerage Scheme	S	9,455,000
		14,755,000
Schemes to Advance through Planning		
Galway City Water Supply Network (Rising Main Clifton Hill to Forabrocky)	W	3,000,000
Galway City Water Supply Network (Outer City By-Pass Distribution Ring Watermain)	W	7,850,000
Galway City Water Supply Scheme (Menlo Extension/ Augmentation)	W	3,750,000
		14,600,000
Water Conservation Allocation		12,000,000
Asset Management Study		60,000
Programme Total		114,519,000

¹ Work to be undertaken on interim filtration facilities in 2007

* All Galway City schemes have Gateway status as described in the National Spatial Strategy

Galway County

Water Services Investment Programme 2007 - 2009

Schemes at Construction	W/S	Est. Cost	Serviced Land Initiative	W/S	Est. Cost
Carna/Kilkieran Water Supply Scheme	W	18,144,000	Athenry Water Supply/ Sewerage Scheme	W/S	767,000
Carraroe Sewerage Scheme ²	S	3,800,000	Claregalway Sewerage Scheme	S	1,474,000
Headford Sewerage Scheme	S	9,423,000	Craughwell Sewerage Scheme	S	1,371,000
Tuam Regional Water Supply Scheme			Gort Water Supply/Sewerage Scheme	W/S	740,000
(Ext. to Clarinbridge) (H)	W	2,615,000	Kilcolgan Water Supply Scheme	W	347,000
Tuam Regional Water Supply Scheme			Kinvara Sewerage Scheme	S	292,000
(Ext. to Headford) (H)	W	29,381,000			4,991,000
		63,363,000	Rural Towns & Villages Initiative		
Schemes to start 2007			Craughwell Water Supply Scheme	W	6,443,000
Craughwell Sewerage Scheme ²	S	4,113,000	Dunmore Sewerage Scheme ³	S	3,144,000
Tuam Town Water Supply and			Kilconnell Sewerage Scheme	S	1,536,000
Sewerage Scheme Stage 2 (H)	W/S	27,500,000	Kilkerrin Sewerage Scheme ³	S	1,670,000
		31,613,000	Leenane Sewerage Scheme ³	S	2,062,000
Schemes to start 2008					14,855,000
Athenry Sewerage Scheme	S	11,600,000	Schemes to Advance through Planning		
Ballinasloe Sewerage Scheme	S	21,050,000	Ballinasloe Regional Water Supply Scheme		
Ballinasloe Regional Water Supply Scheme	W	16,200,000	Phase 2	W	10,400,000
Barna Sewerage Scheme Phase 1	S	7,160,000	Ballygar Water Supply Scheme	W	2,200,000
Carna Sewerage Scheme ¹	S	3,800,000	Clonsilla/Cornamona Water Supply Scheme ⁴	W	2,629,000
Claregalway Sewerage Scheme ²	S	7,566,000	Dunmore/Glenamaddy Regional Water		
Clarinbridge Sewerage Scheme	S	1,845,000	Supply Scheme	W	13,711,000
Corofin Sewerage Scheme	S	2,600,000	Galway City Western Environs Water		
Costelloe Regional Water Supply Scheme	W	24,000,000	Supply Scheme (G)	W	3,093,000
EyreCourt Sewerage Scheme ¹	S	4,910,000	Galway East Wastewater Treatment Plant		
Glenamaddy Sewerage Scheme	S	3,060,000	Feasibility Study	S	300,000
Kilkieran Sewerage Scheme ¹	S	3,550,000	Inishboffin Water Supply Scheme ⁴	W	1,845,000
Kilronan Sewerage Scheme	S	7,155,000	Loughrea Sewerage Scheme	S	5,000,000
Kinvara Sewerage Scheme	S	3,025,000	Portumna Regional Water Supply Scheme		
Laurecetown Sewerage Scheme	S	1,758,000	Phase 1	W	7,361,000
Milltown Sewerage Scheme ²	S	3,150,000	Roundstone Water Supply Scheme ⁴	W	1,845,000
Mountbellew Sewerage Scheme ¹	S	5,958,000	Spiddal Sewerage Scheme	S	4,479,000
Oughterard Sewerage Scheme	S	5,800,000			52,863,000
Tuam Regional Water Supply Scheme			Water Conservation Allocation		1,830,000
Remainder of Phase 2 (H)	W	27,113,000			
Tully Sewerage Scheme	S	1,409,000	Asset Management Study		120,000
		162,709,000	Western River Basin District (WFD) Project⁵		11,000,000
Schemes to start 2009					
Clifden Regional Water Supply Scheme	W	29,400,000	Programme Total		464,060,000
Clifden Sewerage Improvement Scheme	S	21,856,000			
Galway Sludge Management (G)	S	8,500,000			
Gort Regional Water Supply Scheme	W	35,160,000			
Loughrea Regional Water Supply Scheme	W	25,800,000			
		120,716,000			

(H) Refers to a Hub as designated in the National Spatial Strategy

(G) Refers to a Gateway as designated in the National Spatial Strategy

¹ Bundled together ² Bundled together ³ Bundled together ⁴ Bundled together

⁵ This project is being led by Galway County Council on behalf of the 7 other authorities in the River Basin District.

Kerry

Water Services Investment Programme 2007 - 2009

Schemes at Construction	W/S	Est. Cost
Caherciveen Water Supply Scheme	W	5,550,000
		5,550,000
Schemes to start 2007		
Lough Leane Catchment Sewerage Scheme (Kilcummin, Barraduff) (H)	S	4,400,000
North Ardfert Water Supply Scheme (Source Protection)	W	360,000
Waterville Water Supply & Sewerage Scheme	W/S	18,000,000
		22,760,000
Schemes to start 2008		
Kenmare Water Supply Scheme	W	8,122,000
Kerry Central Regional Water Supply Scheme (Reservoirs) (H)	W	10,000,000
Kerry Central Regional Water Supply Scheme (Treatment)	W	6,900,000
Kerry Sludge Management (H)	S	4,620,000
Kerry Villages Sewerage Schemes Phase 1 (Caherdaniel, Scartaglen, Finuge, Currow, Brandon, Boolteens, Beaufort, Asdee, Aughasala, The Glen, Glenflesk, Cromane, Chapelstown & Cashen)	S	8,750,000
Listowel Sewerage Scheme (Nutrient Reduction)	S	220,000
Listowel Town Water Supply Scheme (Upgrade)	W	750,000
Tralee Sewerage Scheme (Nutrient Reduction) (H)	S	260,000
		39,622,000
Schemes to start 2009		
Castleisland Sewerage Scheme Stage 2	S	5,700,000
Kenmare Sewerage Scheme (Upgrade)	S	6,300,000
Kilorglin/Mid-Kerry Water Supply Improvement Scheme	W	7,000,000
Lough Leane Catchment Sewerage Scheme (Killarney)	S	7,500,000
		26,500,000
Serviced Land Initiative		
Ballyard Water Supply/ Sewerage Scheme	W/S	250,000
Rathass & Brewery Road Sewerage Scheme	S	351,000
		601,000
Schemes to Advance through Planning		
Skellig Ring Water Supply Scheme	W	5,250,000
Villages Sewerage Scheme Feasibility Study (Phase 1 Refurbishment)	S	105,000
Water Supply Schemes Strategic Study	W	210,000
NSS Hub Cluster Sewerage Scheme (Abbeydorney, Ardfert, Castlemaine, Fieries, Fenit, Lixnaw, Kilflynn, Milltown, Spa) (H)	S	18,000,000
Wastewater & Sludge Strategic Study	S	200,000
		23,765,000
Water Conservation Allocation		2,809,000
Asset Management Study		130,000
Programme Total		121,737,000

(H) Refers to a Hub as designated in the National Spatial Strategy

Kildare*

Water Services Investment Programme 2007 - 2009

Schemes at Construction	W/S	Est. Cost
Kildare Sludge Management	S	19,500,000
Kildare Water Supply Scheme Phase 1 -Trunk Watermains (Contract 3B - Ardscull to Athy)	W	5,100,000
Lower Liffey Valley Sewerage Scheme (Treatment Plant & Collection System for Kilcock, Straffan, Celbridge, Maynooth and Leixlip)	S	35,700,000
		60,300,000
Schemes to start 2007		
Kildare Water Supply Scheme Phase 1 (Contract 3A - Ardscull to Old Kilcullen Reservoir)	W	6,000,000
Kildare Water Supply Scheme Phase 1 Wellfield Contract (Johnstownbridge/Robertstown)	W	15,000,000
		21,000,000
Schemes to start 2008		
Kildare Town Sewerage Scheme	S	21,400,000
Kildare Water Supply Scheme Phase 1 (River Barrow Abstraction Scheme and Associated Pipelines)	W	44,200,000
Kildare Water Supply Scheme Phase 2 (Castlewarden to Ballygoran)	W	15,300,000
Upper Liffey Valley Sewerage Scheme Stage 3 (Osberstown)	S	18,000,000
		98,900,000
Serviced Land Initiative		
Athgarvan/Newbridge Water Supply Scheme	W	640,000
Ballymore Eustace Wastewater Treatment Plant	S	1,400,000
Derrinturn Wastewater Treatment Plant	S	2,100,000
Sunnyhill (Kilcullen) Water Supply Scheme	W	520,000
		4,660,000
Schemes to Advance through Planning		
Athy Sewerage Scheme	S	2,400,000
Ballyna Regional Water Supply Scheme	W	11,500,000
Moone/ Timolin/ Ballitore Sewerage Scheme	S	4,300,000
Rathangan Sewerage Scheme	S	2,800,000
		21,000,000
Water Conservation Allocation		1,300,000
Asset Management Study		160,000
Programme Total		207,320,000

* All Kildare schemes fall within the Greater Dublin Area as described in the National Spatial Strategy

Kilkenny

Water Services Investment Programme 2007 - 2009

Schemes to start 2008	W/S	Est. Cost
Gowran/ Goresbridge/ Paulstown Water Supply Scheme	W	9,070,000
		9,070,000
Schemes to start 2009		
Ballyragget / Clogh / Castlecomer / Urlingford / Johnstown Water Supply Scheme	W	14,200,000
Bennettsbridge Water Supply Scheme	W	13,370,000
Callan / Graiguenamanagh / Thomastown / Inistiogue Water Supply Scheme	W	20,000,000
Kilkenny City Regional Water Supply Scheme (H)	W	10,000,000
Kilkenny City Wastewater Treatment Plant (H)	S	13,000,000
Kilkenny Sludge Management (H)	S	10,000,000
		80,570,000
Serviced Land Initiative		
Bennettsbridge Sewerage Scheme	S	800,000
Gowran Sewerage Scheme	S	816,000
Kilkenny City Western Environs Sewerage Scheme (H)	W/S	4,800,000
Mooncoin Sewerage Scheme	S	4,000,000
Paulstown Wastewater Treatment Plant	S	750,000
		11,166,000
Rural Towns & Villages Initiative		
Kilmacow Sewerage Scheme	S	5,000,000
		5,000,000
Schemes to Advance through Planning		
Freshford/ Johnstown/ Goresbridge Sewerage Scheme	S	7,900,000
Mooncoin Regional Water Supply Scheme	W	9,000,000
Piltown/Fiddown Water Supply Scheme	W	3,000,000
		19,900,000
Water Conservation Allocation		1,472,000
Asset Management Study		80,000
Programme Total		127,258,000

(H) Refers to a Hub as designated in the National Spatial Strategy

Laois

Water Services Investment Programme 2007 - 2009

Schemes at Construction	W/S	Est. Cost
Portarlinton Water Supply Scheme	W	5,330,000
Portlaoise Sewerage Scheme (incorporating Laois Sludge Management)	S	40,880,000
		46,210,000
Schemes to start 2007		
Mountmellick Sewerage Scheme Phase 1	S	2,600,000
		2,600,000
Schemes to start 2008		
Laois Grouped Towns Sewerage Scheme (Abbeyleix, Rathdowney, Mountrath, Stradbally, Durrow, Clonaslee)	S	39,000,000
Portlaoise Stage 2 and Mountmellick Water Supply Schemes	W	15,000,000
		54,000,000
Schemes to start 2009		
Portarlinton/Emo/ Ballybrittas/ Killenard Sewerage Scheme	S	11,935,000
		11,935,000
Rural Towns & Villages Initiative		
Mountmellick Water Supply Scheme*	W	0
*Previously listed with Portlaoise Stage 2 Water Supply Scheme above		0
Schemes to Advance through Planning		
Durrow Water Supply Improvement Scheme	W	2,000,000
Laois Villages Sewerage Scheme Feasibility Study	S	210,000
Mountmellick Sewerage Scheme Phase 2	S	12,000,000
Mountrath Water Supply Scheme	W	2,750,000
		16,960,000
Water Conservation Allocation		2,200,000
Asset Management Study		60,000
Programme Total		133,965,000

For inspection purposes only.
Consent of copyright owner required for any other use.

Leitrim

Water Services Investment Programme 2007 - 2009

Schemes at Construction	W/S	Est. Cost
Carrick-on-Shannon Sewerage Scheme	S	18,880,000
Leitrim Towns & Villages Sewerage Scheme (Dromahair, Kinlough, Kiltyclogher, Tullaghan, Drumkeeran, Rooskey, Jamestown, Cloone, Drumcong, Killargue & Ballinaglera)	S	15,945,000
		34,825,000
Schemes to start 2008		
Kinlough/ Tullaghan Water Supply Scheme	W	1,875,000
Leitrim Sludge Management	S	1,330,000
South Leitrim Regional Water Supply Scheme	W	5,745,000
		8,950,000
Schemes to start 2009		
Leitrim Towns & Villages Sewerage Scheme Feasibility Study	S	105,000
North Leitrim Regional Water Supply Scheme Phase 2	W	6,580,000
		6,685,000
Water Conservation Allocation		1,000,000
Asset Management Study		30,000
Programme Total		51,490,000

For inspection purposes only.
Consent of copyright owner required for any other use.

Limerick City*

Water Services Investment Programme 2007 - 2009

Schemes at Construction	W/S	Est. Cost
Clareville Water Treatment Plant	S	32,000,000
Limerick Water Network (Southern Ring Main - City & County)	W	10,712,000
		42,712,000
Schemes to start 2007		
Limerick Sewerage Scheme (Ct 3.7 - Westbury Pumping Station)	S	1,123,000
		1,123,000
Schemes to start 2008		
Limerick Sewerage Scheme Phase 2 (Rehabilitation)	S	5,408,000
		5,408,000
Schemes to Advance through Planning		
Limerick Sewerage Scheme Strategic Study	S	210,000
		210,000
Water Conservation Allocation		9,263,000
Asset Management Study		50,000
Programme Total		58,766,000

For inspection purposes only.
Consent of copyright owner required for any other use.

* All Limerick City schemes have Gateway status as described in the National Spatial Strategy

Limerick County

Water Services Investment Programme 2007 - 2009

Schemes at Construction	W/S	Est. Cost
Pallaskenry/ Kildimo Water Supply Scheme	W	1,411,000
		1,411,000
Schemes to start 2007		
Limerick County Water Network (Patrickswell/Adare)	W	3,245,000
Limerick County Water Network (Croom Link)	W	5,840,000
		9,085,000
Schemes to start 2008		
Adare & Patrickswell Sewerage Scheme	S	9,414,000
Kilmallock Sewerage Scheme	S	9,744,000
Limerick County Water Network (Caherconlish N24 Link) (G)	W	2,060,000
Limerick County (incl. Caherdavin & City) Water Network (G)	W	1,236,000
Limerick County Water Network Extension (Pallasgreen & Oola)	W	2,946,000
Limerick Sludge Management (G)	S	2,709,000
Mungret Sewerage Scheme (G)	S	4,944,000
Shannon Estuary Water Supply Treatment Plant (Upgrade)	W	4,326,000
		37,379,000
Schemes to start 2009		
Athea, Askeaton, Foynes, Glin & Shanagolden Sewerage Scheme	S	18,293,000
Drumcollogher/ Hospital/ Pallasgreen/ Bruff Grouped Sewerage Scheme	S	10,506,000
		28,799,000
Serviced Land Initiative		
Castleconnell Water Supply Scheme (Upgrade) (G)	W	1,112,000
Mungret Surface Water Drainage Scheme (G)	S	832,000
		1,944,000
Schemes to Advance through Planning		
Castletroy Sewerage Scheme (Upgrade) (G)	S	5,800,000
Newcastle West Sewerage Scheme	S	14,600,000
		20,400,000
Water Conservation Allocation		4,318,000
Asset Management Study		100,000
Shannon River Basin District (WFD) Project ¹		10,100,000
Programme Total		113,536,000

(G) Refers to a Gateway as designated in the National Spatial Strategy

¹ This project is being led by Limerick County Council on behalf of the other authorities in the River Basin District

Longford

Water Services Investment Programme 2007 - 2009

Schemes to start 2007	W/S	Est. Cost
Edgeworthstown Sewerage Scheme (Nutrient Reduction)	S	600,000
Longford Central Regional Water Supply Scheme (Reservoir and Pipelines)	W	7,500,000
		8,100,000
Schemes to start 2008		
Ballymahon Regional Water Supply Scheme (Improvement)	W	4,500,000
Granard Regional Water Supply Scheme	W	6,500,000
Longford Sewerage Scheme Phase 2 (New Sewers)	S	5,700,000
		16,700,000
Schemes to start 2009		
Drumlsh and Newtownforbes Sewerage Schemes ¹	S	8,300,000
		8,300,000
Schemes to Advance Through Planning		
Lanesborough Regional Water Supply Scheme	W	8,000,000
Longford Central Regional Water Supply Scheme Phase 1 ²	W	7,000,000
Longford Grouped Towns and Villages Sewerage Scheme Feasibility Study (Abbeylara, Abbeysrule, Ballinamuck, Barry, Killashee, Ennybeggs, Legga, Moydow, Moyne, Newtowncashel, Stonepark and Taghshinny)	S	8,060,000
Longford Town Sewerage Scheme (Network Review, Wastewater Treatment Plant and Hub Centre for Sludge)	S	9,760,000
		32,820,000
Rural Towns & Villages Initiative		
Ardagh/ Ballinalee/ Aghnacliffe Sewerage Schemes ¹	S	4,000,000
Lanesborough Water Supply Stage 1 (Wellfield Development)	W	1,400,000
		5,400,000
Water Conservation Allocation		4,200,000
Asset Management Study		30,000
Programme Total		75,550,000

¹ Bundled together as a Grouped DBO Scheme

² Works arising from the Strategic Review

Louth

Water Services Investment Programme 2007 - 2009

Schemes to start 2008	W/S	Est. Cost
Cooley Regional Water Supply Scheme	W	5,500,000
Dunleer/Mid Louth Regional Water Supply Scheme	W	13,500,000
		19,000,000
Schemes to start 2009		
Ardee Sewerage Scheme	S	7,500,000
Blackrock Sewerage Scheme (G)	S	10,000,000
Drogheda Sewerage Feasibility Study (Network Improvements - Stage 1)	S	1,580,000
Dundalk Water Supply Strategic Study (G)	W	500,000
		19,580,000
Serviced Land Initiative		
Knockbridge Sewerage Scheme	S	936,000
Tallanstown & Collon Sewerage Scheme	S	1,545,000
		2,481,000
Schemes to Advance through Planning		
Drogheda/East Meath Sewerage Scheme Feasibility Study	S	500,000
Dundalk South & West Sewerage Scheme Phase 1 (G)	S	12,500,000
		13,000,000
Water Conservation Allocation		4,000,000
Asset Management Study		100,000
Programme Total		58,161,000

(G) Refers to a Gateway as designated in the National Spatial Strategy

For inspection purposes only.
Consent of copyright owner required for any other use.

Mayo

Water Services Investment Programme 2007 - 2009

Schemes at Construction	W/S	Est. Cost
Ballina Sewerage Scheme (H)	S	20,000,000
Ballina Water Supply Scheme (Ext. to Crossmolina) (H)	W	4,460,000
Castlebar Environs Sewerage Scheme (excl. Advance & Outfall)(H)	S	49,028,000
		73,488,000
Schemes to start 2008		
Achill Sound Sewerage Scheme	S	5,377,000
Ballina Regional Water Supply Scheme (Storage/Mains)(H)	W	10,500,000
Erris Regional Water Supply (Ext. to Glenamoy)	W	2,791,000
Kilmaine & Shrute Water Supply Scheme	W	5,572,000
Kiltimagh Sewerage Scheme	S	9,393,000
Lough Mask Regional Water Supply Scheme (Ext. Shrah to Westport and Ext. to Treatment Plant at Tourmakeady)	W	21,350,000
Lough Mask Regional Water Supply Scheme (Ext. to Kiltimagh)	W	7,200,000
Lough Mask Regional Water Supply Scheme (Ext. to Louisburg)	W	6,330,000
Mayo Towns and Villages Sewerage Scheme (Charlestown, Cross, The Neale, Ballyheane, and Crossboyne Sewerage Schemes)	S	6,252,000
		74,765,000
Schemes to start 2009		
Belmullet/ Foxford Sewerage Scheme	S	21,420,000
Killala Sewerage Scheme	S	5,572,000
Mayo Sludge Management (H)	S	7,354,000
		34,346,000
Serviced Land Initiative		
Ballyhaunis/Derrymore Sewerage Scheme	S	305,000
Charlestown Sewerage Scheme	S	222,000
		527,000
Rural Towns & Villages Initiative		
Newport Sewerage Scheme	S	9,000,000
		9,000,000
Schemes to Advance through Planning		
Ballina Regional Water Supply Scheme (Treatment Plant Upgrade) (H)	W	6,000,000
Cong Water Supply Strategic Study	W	300,000
Lough Conn - East Mayo Regional Water Supply Feasibility Study (incl. Swinford)	W	500,000
		6,800,000
Water Conservation Allocation		6,132,000
Asset Management Study		120,000
Programme Total		205,178,000

(H) Refers to a Hub as designated in the National Spatial Strategy

Meath*

Water Services Investment Programme 2007 - 2009

Schemes at Construction	W/S	Est. Cost
Navan AC Watermains Network Phases 2 & 3	W	4,250,000 4,250,000
Schemes to start 2007		
Ashbourne/Ratoath/Kilbride Sewerage Scheme	S	26,000,000
Dunshaughlin Water Supply Scheme	W	10,000,000
Meath Grouped Towns & Villages Sewerage Scheme (Donore, Duleek, Athboy, Kilmainhamwood, Summerhill, Moynalty, Rathcairn & Rathmolyon)	S	37,000,000 73,000,000
Schemes to start 2008		
East Meath, Drogheda & South Louth Water Supply Scheme	W	75,000,000
Meath Sludge Management	S	7,500,000
Navan Mid-Meath Water Supply Scheme	W	78,000,000 160,500,000
Schemes to start 2009		
Oldcastle Sewerage Scheme	S	5,500,000 5,500,000
Serviced Land Initiative		
Trim Water Improvement Scheme	W	2,000,000 2,000,000
Rural Towns & Villages Initiative		
Rathcairn Sewerage Scheme ¹	S	-
Rathmolyon Sewerage Scheme ¹	S	-
¹ included under the Grouped Towns & Villages Scheme		0
Schemes to Advance through Planning		
Dunboyne/Clonee Water Supply Scheme	W	6,000,000
Kells Sewerage Scheme	S	11,000,000
Kells/Oldcastle Water Supply Scheme	W	2,000,000
Navan Sewerage Scheme (Network Rehabilitation)	S	15,000,000 34,000,000
Water Conservation Allocation		16,522,000
Asset Management Study		100,000
Programme Total		295,872,000

For inspection purposes only.
Consent of copyright owner required for any other use.

* All Meath County Council schemes fall within the Greater Dublin Area as described in the National Spatial Strategy

Monaghan

Water Services Investment Programme 2007 - 2009

	W/S	Est. Cost
Schemes to start 2007		
Carrickmacross Sewerage Scheme	S	22,000,000
		22,000,000
Schemes to start 2008		
Castleblaney/Ballybay/Clones Wastewater Treatment Plant	S	12,000,000
		12,000,000
Schemes to start 2009		
Monaghan Sludge Management (H)	S	2,570,000
Monaghan Town Sewerage Scheme (H)	S	27,500,000
		30,070,000
Serviced Land Initiative		
Monaghan Town Sewerage Scheme (North Eastern Collection Area)(H)	S	2,700,000
		2,700,000
Rural Towns and Villages Initiative		
Carrickmacross Water Supply Scheme	W	4,500,000
Castleblaney Water Supply Scheme Stage 2	W	1,100,000
		5,600,000
Water Conservation Allocation		3,185,000
Asset Management Study		50,000
Programme Total		75,605,000

(H) Refers to a Hub as designated in the National Spatial Strategy

For inspection purposes only.
Consent of copyright owner required for any other use.

Offaly

Water Services Investment Programme 2007 - 2009

Schemes at Construction	W/S	Est. Cost
Offaly Sludge Management (G)	S	5,624,000
		5,624,000
Schemes to start 2007		
Edenderry Sewerage Scheme	S	14,300,000
		14,300,000
Schemes to start 2008		
Birr Water Supply Scheme	W	12,700,000
Edenderry/Rhode Water Supply Scheme	W	8,040,000
Tullamore Water Supply Scheme Stage 5 (G)	W	15,000,000
		35,740,000
Schemes to start 2009		
Birr Sewerage Improvement Scheme	S	7,140,000
Offaly Grouped Towns & Villages Sewerage Scheme No 1 - Feasibility Study (Ballycumber, Banagher, Belmont, Daingean, Kinnitty, Moneygall, Shannonbridge, Shinrone and Kilcormac)	S	8,500,000
Offaly Grouped Towns & Villages Water Supply Scheme - Feasibility Study (Rahan, Dunkerrin/Moneygall, Mountbolus, Geashill, Kinnitty, Coolderry, Clonbullogue, and Walsh Island)	W	5,830,000
Tullamore Sewerage Scheme (G)	S	43,200,000
		64,670,000
Serviced Land Initiative		
Edenderry Sewerage Scheme (Surface Water)	S	2,500,000
		2,500,000
Rural Towns & Villages Initiative		
Birr Sewerage Scheme (Pipelines)	S	2,100,000
Rhode Sewerage Scheme	S	3,832,000
		5,932,000
Schemes to Advance Through Planning		
Mid Offaly Regional Water Supply Scheme Feasibility Study (G)	W	300,000
		300,000
Water Conservation Allocation		1,865,000
Asset Management Study		60,000
Programme Total		130,991,000

(G) Refers to a Gateway as designated in the National Spatial Strategy

Roscommon

Water Services Investment Programme 2007 - 2009

Schemes to start 2007	W/S	Est. Cost
Towns & Villages Sewerage Scheme (Strokestown, Elphin, Brideswell, Ballinlough, Knockcroghery, Lisacul, Loughglynn, Frenchpark, Arigna, Cootehall, Castleplunkett, Ballyleague and Environs, Tulsk, Creagh, Curraghboy and Hodson Bay)	S	28,000,000 28,000,000
Schemes to start 2008		
NE Roscommon Water Supply Scheme (Augmentation)	W	16,000,000
Roscommon Sludge Management	S	2,680,000
		18,680,000
Schemes to start 2009		
Arigna, Boyle/Ardcarne (Stage 2), Roscommon Central and South Roscommon Regional Water Supply Scheme	W	54,000,000
Roscommon Sewerage Scheme Upgrade	S	4,206,000
West Roscommon Regional Water Supply Scheme (incl. North Roscommon, Castlerea and Ballinlough)	W	15,773,000
		73,979,000
Serviced Land Initiative		
Lanesboro Rd Roscommon Sewerage Scheme	S	1,237,000
		1,237,000
Schemes to Advance through Planning		
Monksland Sewerage Scheme Stage 2 (Upgrade) (G)	S	15,000,000
		15,000,000
Water Conservation Allocation		1,500,000
Asset Management Study		50,000
Programme Total		138,446,000

(G) Refers to a Gateway as designated in the National Spatial Strategy

Sligo

Water Services Investment Programme 2007 - 2009

Schemes at Construction	W/S	Est. Cost.
Sligo & Environs Water Supply Scheme Stage 2 (G)	W	14,700,000
Sligo Wastewater Treatment Plant (DBO Contract)(G)	S	24,000,000
		38,700,000
Schemes to start 2007		
Enniscrone Sewerage Scheme	S	3,100,000
		3,100,000
Schemes to start 2008		
Ballygawley, Mullaghmore, Ballinacarrow* & Cliffoney* Grouped Sewerage Scheme	S	6,500,000
Mullaghmore Water Supply Scheme Stage 2	W	1,430,000
Sligo Sewerage Scheme (Network Improvement)(G)	S	5,300,000
		13,230,000
Schemes to start 2009		
Carrowroe Sewerage Scheme	S	2,300,000
Lough Talt Water Supply Scheme	W	1,870,000
Rosses Point/ Cregg/ Ballincar Sewerage Scheme	S	4,500,000
		8,670,000
Serviced Land Initiative		
Grange, Strandhill & Tubbercurry Grouped Sewerage Improvement Scheme	S	4,250,000
Teesan/Lisnalurg Sewerage Scheme	S	1,420,000
Ballinacarrow Sewerage Scheme*	S	-
Cliffoney Sewerage Scheme*	S	-
*Previously listed with grouped scheme above		5,670,000
Schemes to Advance through Planning		
Ballymote Sewerage Scheme (Upgrade)	S	5,000,000
Collooney Sewerage Scheme (Upgrade)	S	5,000,000
North Sligo Regional Water Supply Scheme Phase 2	W	3,570,000
Sligo & Environs Water Supply Scheme Phase 3 (G)	W	4,080,000
		17,650,000
Water Conservation Allocation		2,652,000
Asset Management Study		60,000
Programme Total		89,732,000

(G) Refers to a Gateway as designated in the National Spatial Strategy

North Tipperary

Water Services Investment Programme 2007 - 2009

Schemes at Construction	W/S	Est. Cost
Templemore Sewerage Scheme	S	7,500,000
		7,500,000
Schemes to start 2007		
Thurles Wastewater Treatment Plant	S	2,492,000
		2,492,000
Schemes to start 2008		
Ballina Sewerage Scheme	S	6,630,000
Nenagh Sewerage Scheme	S	3,600,000
Newport Sewerage Scheme	S	4,206,000
North Tipperary Sludge Management	S	3,247,000
Roscrea Regional Water Supply Scheme (Upgrade)	W	1,082,000
Roscrea Sewerage Scheme (Upgrade)	S	1,629,000
Thurles Regional Water Supply Scheme	W	46,050,000
Thurles Sewerage Scheme	S	7,150,000
		73,594,000
Schemes to start 2009		
North West Regional Water Supply Scheme	W	15,773,000
		15,773,000
Serviced Land Initiative		
Friar Street/Stradavoher Sewerage Scheme (Thurles)	S	1,299,000
Kiltillane Road Sewerage Scheme (Templemore)	S	806,000
Knock Rd Sewerage Scheme Extension (Roscrea)	S	959,000
Whitepark/Golden Grove Road Sewerage Scheme (Roscrea)	S	243,000
		3,307,000
Rural Towns & Villages Initiative		
Borrisleigh Sewerage Scheme	S	2,185,000
Newport Regional Water Supply Scheme	W	6,058,000
		8,243,000
Schemes to Advance through Planning		
Cloughjordan, Dromineer, Rearcross & Silvermines Wastewater Treatment Plants (Upgrade)	S	4,206,000
Rural Villages Sewerage Scheme Feasibility Study	S	300,000
Templemore Regional Water Supply Scheme (Source Augmentation)	W	1,000,000
		5,506,000
Water Conservation Allocation		1,859,000
Asset Management Study		60,000
Programme Total		118,334,000

For inspection purposes only.
Consent of copyright owner required for any other use.

South Tipperary

Water Services Investment Programme 2007 - 2009

	W/S	Est. Cost
Schemes to start 2007		
Clonmel Sewerage Scheme Phase 1	S	1,576,000
South Tipperary Sludge Management	S	5,880,000
		7,456,000
Schemes to start 2008		
Clonmel Sewerage Scheme Phase 2	S	2,730,000
Fethard Sewerage Scheme (Upgrade)	S	4,080,000
		6,810,000
Schemes to start 2009		
Clonmel Town & Rural Water Supply Scheme	W	38,000,000
Galtee Regional Water Supply Scheme (Augmentation)	W	14,500,000
		52,500,000
Rural Towns & Villages Initiative		
Burncourt Water Supply Scheme	W	6,407,000
Fethard Water Supply Scheme Stage 2	W	8,065,000
		14,472,000
Schemes to Advance through Planning		
Ardfinnan Regional Water Supply Scheme (Lissava)	W	5,500,000
Carrick-on-Suir Water Supply Scheme	W	1,575,000
Clonmel Storm Drainage Strategic Study	S	525,000
Dundrum Regional Water Supply Scheme	W	2,204,000
Grouped Sewerage Scheme Stages 1 & 2 Feasibility Study	S	300,000
		10,104,000
Water Conservation Allocation		3,620,000
Asset Management Study		80,000
Programme Total		95,042,000

For inspection purposes only.
Consent of copyright owner required for any other use.

Waterford City*

Water Services Investment Programme 2007 - 2009

Schemes at Construction	W/S	Est. Cost
Waterford Sewerage Scheme Stage 2	S	54,500,000
Waterford South City Water Supply Scheme	W	585,000
		55,085,000
Schemes to start 2007		
Waterford North West City Water Supply Scheme	W	9,800,000
		9,800,000
Schemes to start 2008		
Waterford North West City Sewerage Scheme	S	3,642,000
		3,642,000
Schemes to start 2009		
Waterford South West City Water Supply Scheme	W	1,318,000
		1,318,000
Serviced Land Initiative		
Killure Sewerage Scheme Stage 2	S	485,000
Old Kilmeaden Rd., Ballybeg & Kilbarry Sewerage Scheme (Ext. of Kilbarry Sewerage Scheme)	S	2,370,000
		2,855,000
Schemes to Advance through Planning		
Adamstown to Waterford City Network (Trunk Main Augmentation)	W	4,500,000
Waterford Sludge Management	S	5,410,000
		9,910,000
Water Conservation Allocation		6,914,000
Asset Management Study		50,000
Programme Total		89,574,000

* All Waterford City schemes have Gateway status as described in the National Spatial Strategy

Waterford County

Water Services Investment Programme 2007 - 2009

Schemes at Construction	W/S	Est. Cost
Dungarvan Sewerage Scheme	S	34,870,000
East Waterford Water Supply Scheme Stage 2 Phase 2	W	21,320,000
Tramore Sewerage Scheme	S	21,530,000
		77,720,000
Schemes to start 2007		
Waterford Grouped Towns & Villages Sewerage Scheme (Ardmore, Tallow, Stradbally, Cappoquin, Dunmore East, Kilmacthomas and Ballyduff/Kilmeadan)	S	48,310,000
		48,310,000
Schemes to start 2008		
Ballyduff Upper Sewerage Scheme	S	578,000
Ballynacourty Deelish Water Supply Scheme	W	4,470,000
Dunmore East Water Supply Scheme	W	1,515,000
Ring Helvic Water Supply Scheme	W	3,575,000
Waterford Sludge Management (G)	S	2,895,000
West Waterford Water Supply Scheme (Incl. Strategic Study)	W	2,945,000
		15,978,000
Schemes to start 2009		
Ardmore Water Supply Scheme	W	2,310,000
Bonmahon Sewerage Scheme	S	420,000
Dungarvan Water Supply Scheme	W	3,575,000
		6,305,000
Serviced Land Initiative		
Aglish, Piltown, Clashmore, Tallow, Villierstown Sewerage Scheme	S	1,680,000
		1,680,000
Rural Towns & Villages Initiative		
Cheekpoint Sewerage Scheme	S	1,515,000
		1,515,000
Schemes to Advance through Planning		
Carrick-on-Suir Rathgormac Water Supply Scheme	W	2,155,000
Clashmore Sewerage Scheme (Collection System)	S	515,000
Dunhill Sewerage Scheme	S	160,000
Faithlegg Water Supply Scheme	W	2,100,000
Kilmacthomas Water Supply Scheme	W	1,100,000
Lismore Sewerage Scheme	S	5,215,000
Portlaw Sewerage Scheme	S	4,895,000
Portlaw Water Supply Scheme	W	1,855,000
Tramore Sewerage Scheme (Collection System)	S	10,500,000
		28,495,000
Water Conservation Allocation		2,600,000
Asset Management Study		50,000
Programme Total		182,653,000

(G) Refers to a Gateway as designated in the National Spatial Strategy

Westmeath

Water Services Investment Programme 2007 - 2009

Schemes At Construction	W/S	Est.Cost
Athlone Water Treatment Plant (G)		4,200,000
		4,200,000
Schemes to start 2008		
Athlone Sewerage Scheme Phase 1 (G)	S	15,000,000
Mullingar Regional Water Supply Scheme Improvement (incorporating Lough Ennell Abstraction) (G) ¹	W	8,000,000
Mullingar Sewerage Scheme (incorporating Westmeath Sludge Management) (G)	S	72,110,000
		95,110,000
Schemes to start 2009		
South Westmeath Regional Water Supply Scheme Phases 1 - 3	W	71,000,000
		71,000,000
Serviced Land Initiative		
Ballymore Sewerage Scheme	S	785,000
Clonmellon Wastewater Treatment Plant	S	689,000
Delvin Sewerage Scheme	S	4,300,000
Rochfortbridge Sewerage Scheme Phase 1	S	5,870,000
		11,644,000
Rural Towns & Villages Initiative		
Glasson/Ballykeeran/Coosan Sewerage Scheme Phase 1	S	3,950,000
Milltownpass Sewerage Scheme	S	2,300,000
		6,250,000
Schemes to Advance through Planning		
Coole Sewerage Scheme	S	2,600,000
Finea Sewerage Scheme	S	1,600,000
Kilbeggan Sewerage Scheme Phase 1	S	5,500,000
Lough Lene Water Supply Scheme	W	4,600,000
Moate Sewerage Scheme Phase 1	S	9,700,000
Rathowen Sewerage Scheme	S	1,900,000
		25,900,000
Water Conservation Allocation		4,700,000
Asset Management Study		70,000
Programme Total		218,874,000

(G) Refers to a Gateway as designated in the National Spatial Strategy

¹ Scheme expanded since 2005-2007 Programme to include Lough Ennell Abstraction

Wexford

Water Services Investment Programme 2007 - 2009

Schemes at Construction	W/S	Est. Cost
New Ross Sewerage Scheme	S	17,900,000
Rosslare Harbour Sewerage Scheme	S	8,500,000
Wexford Sewerage Scheme (Ext. to Carcur) (H)	S	7,650,000
		34,050,000
Schemes to start 2007		
Gorey Regional Water Supply Scheme (Wellfield)	W	18,950,000
		18,950,000
Schemes to start 2008		
Gorey Sewerage Scheme	S	13,840,000
		13,840,000
Schemes to start 2009		
Enniscorthy Sewerage Scheme Phase 3	S	18,300,000
Fethard-on-Sea Sewerage Scheme	S	5,250,000
Kilmore Quay, Curraclloe, Duncormick Sewerage Scheme	S	4,740,000
New Ross Water Supply Scheme	W	11,230,000
Village Sewerage Schemes (Ballycanew, Camolin, Clonroche, Oylegate, Wellington Bridge)	S	8,200,000
		47,720,000
Serviced Land Initiative		
Arthurstown Sewerage Scheme	S	1,050,000
Castlebridge & Piercestown Sewerage Schemes	S	4,740,000
Coolgreany Sewerage Scheme	S	3,270,000
Taghmon Wastewater Treatment Plant	S	1,575,000
		10,635,000
Rural Towns & Villages Initiative		
Bunclody Sewerage Scheme	S	8,465,000
		8,465,000
Schemes to Advance through Planning		
Enniscorthy and Sow Regional Water Supply Scheme	W	20,450,000
Fardystown Water Supply Scheme Stage 2	W	13,000,000
Wexford Sludge Management (H)	S	6,000,000
		39,450,000
Water Conservation Allocation		5,139,000
Asset Management Study		100,000
Programme Total		178,349,000

For inspection purposes only.
Consent of copyright owner required for any other use.

(H) Refers to a Hub as designated in the National Spatial Strategy

Wicklow*

Water Services Investment Programme 2007 - 2009

Schemes at Construction	W/S	Est. Cost
Rathdrum Wastewater Treatment Plant	S	4,432,000
Wicklow Sewerage Scheme (Wentworth Place Culvert)	S	3,000,000
		7,432,000
Schemes to start 2007		
Arklow Sewerage Scheme (Advance Works)	S	1,000,000
Enniskerry Water Supply Scheme	W	2,600,000
Wicklow Sewerage Scheme (DBO)	S	30,000,000
		33,600,000
Schemes to start 2008		
Arklow Water Supply Scheme Stage 3	W	35,200,000
Bray Catchment Sewerage Scheme (Rehabilitation and Ancillary Works)	S	8,000,000
Dunlavin Sewerage Scheme	S	5,100,000
Newtownmountkennedy Water Supply Scheme	W	8,000,000
West Wicklow Water Supply Scheme Stage 1 (Blessington)	W	6,600,000
West Wicklow Water Supply Scheme Stage 2	W	12,200,000
Wicklow Sludge Management	S	2,860,000
		77,960,000
Schemes to start 2009		
Arklow Sewerage Scheme	S	15,900,000
Newtownmountkennedy Sewerage Scheme (Main Scheme)	S	15,500,000
Wicklow Town Water Supply Scheme	W	42,400,000
		73,800,000
Serviced Land Initiative		
Blessington Wastewater Treatment Plant	S	3,445,000
		3,445,000
Schemes to Advance through Planning		
Aughrim Water Supply Scheme	W	15,300,000
Bray Water Supply Scheme (Storage and Trunk Main)	W	15,800,000
Greystones Sewerage Scheme	S	3,000,000
Rathdrum Water Supply Scheme	W	15,300,000
		49,400,000
Water Conservation Allocation		1,300,000
Asset Management Study		100,000
Programme Total		247,037,000

* All Wicklow County Council schemes fall within the Greater Dublin Area as described in the National Spatial Strategy

Attachment B.12

Foreshore Act Licences

*For inspection purposes only.
Consent of copyright owner required for any other use.*

2 March 2007

SPECIFIC CONDITIONS (Licence)

1. The Licensee:

- (i) shall use that part of the foreshore, the subject matter of this Licence, for the purpose of constructing and maintaining (a) a 250mm diameter rising main, (b) a 400mm diameter outfall at Blue Hill and for expanding the capacity and maintaining (a) two 450mm diameter outfalls at Wolfe Tone Square, (b) a 250mm diameter outfall at Blackrock, as part of Cork County Councils Sewerage Treatment Plant development for the town of Bantry, Co Cork (hereinafter referred to as the works), in accordance with the plan and location drawings*, as submitted to, and approved by, the Minister for Communications Marine and Natural Resources; (hereinafter referred to as the Minister) and for no other purpose whatsoever;

*** Drawing No's. A8763-N103, A8763-N105, A8763-N106, A8763-N107, A8763-N108, A8763-N109 and A8763-N110**

- (ii) may also use adjacent foreshore but only to the extent necessary for the purpose of constructing and maintaining the said works and shall restore the said foreshore to its proper condition immediately after such use.

2. The Licensee shall, prior to commencement of works:

- (i) provide certification by a Chartered Engineer stating that the works have been designed in accordance with relevant Irish or British Standard Specifications or Codes of Practice for strength, stability and durability, taking into account current building regulations and safety legislation;
- (ii) provide for the approval of the Minister, a detailed Construction and Method Statement for carrying out the works and for the disposal of excavated material;
- (iii) give the Minister for Communications, Marine and Natural Resources 14 days notice;
- (iv) apply to the Commissioners of Irish Lights for sanction of new navigational aids/buoyage and/or alteration of existing navigational aids/buoyage;
- (v) notify the British Admiralty Hydrographic Office, of the location, nature and timing of the works;
- (vi) arrange for the publication of a local marine notice. This local marine notice should give a general description of operations and approximate dates of commencement and completion. A notice in a locally read newspaper at least two weeks prior to commencement of operations will suffice;

- (vii) notify the local Harbour Master with respect to the safety of navigation of marine traffic in the river.

3. The Licensee shall, during the construction phase:

- (i) ensure that floating plant or machinery used in connection with the works is adequately lit if in place at night or during times of poor visibility;
- (ii) ensure that all vessels engaged in the works comply fully with the relevant certification requirements;
- (iii) ensure that work is carried out in an environmentally friendly manner so as to minimise the impact on the foreshore and the surrounding environs;
- (iv) ensure that proper environmental controls and monitoring are carried out during the construction phase of the various elements, as there are major aquaculture farming activities in the harbour. It is essential that construction/excavation/dredging sediments are not released into the water column;
- (v) comply with all lawful instructions given by the Heritage and Planning Division of the Department of the Environment, Heritage and Local Government in relation to work on the foreshore area the subject of this Licence or the surrounding area;
- (vi) ensure that all impacts into the foreshore and sub-tidal zone are subject to archaeological monitoring. This should be undertaken by a suitably qualified archaeologist with marine/underwater experience and should be licensed to the Department of Environment, Heritage and Local Government;
- (vii) ensure that the monitoring licence application is accompanied by a detailed method statement and this should include details of plant/dredger type, duration of works and extent of works. The methodology should also include a find's retrieval strategy and details of the proposed archaeological monitoring team;
- (viii) ensure that if significant archaeological remains are found during the archaeological monitoring, the monitoring archaeologist will have the power to have the works stopped. The works operator shall be prepared to move away from the area until the potential archaeology has been properly inspected and fully resolved. The developer shall be prepared to be advised by the Underwater Archaeology Unit of the Department of Environment, Heritage and Local Government in this regard;
- (ix) ensure the diffusers are marked by a high visibility coloured float or similar to indicate position of same and hence discourage vessels anchoring in close proximity.

4. The Licensee shall ensure, that, in the event of any spillage or accident occurring below the high water mark of ordinary or medium tides, or above the high water

mark, which may impact on the foreshore during the carrying out of the works the subject of this Licence, or during operations following the completion of the works, the Irish Coast Guard is notified immediately by telephone.

5. (a) The effluent discharged from the treatment plant outfall pipe shall have a maximum 5-day B.O.D. concentration of 25 mg/l and a maximum suspended solids concentration of 35 mg/l, on a 95% basis. The maximum total daily B.O.D. load discharged from the treatment plant outfall shall not exceed 40 kgs;
 - (b) The effluent from the Waste Water Treatment Plant shall be sampled twice monthly immediately downstream from the plant and immediately prior to discharge. These samples shall be tested for 5-day B.O.D. and for suspended solids concentration;
 - (c) A report on the operation of the treatment plant and compliance with these discharge conditions, including the results of the sample analyses above, shall be submitted to the Department of Communications, Marine and Natural Resources, Coastal Zone Management Division, annually;
 - (d) Should sample analysis indicate that the plant is not operating to design specifications the Licensee shall inform the Department of Communications, Marine and Natural Resources, Coastal Zone Management Division, as soon as possible;
 - (e) The analyses should be carried out in an accredited laboratory;
 - (f) The cost of all the aforementioned sampling and monitoring shall be borne by the Licensee.
6. The Licensee shall ensure that any malfunction or stoppage breakdown of the effluent treatment system shall be notified immediately to the local Sea Fishery Officers of the Sea Fisheries Protection Authority, (Udaras um Chosaint Iascaigh Mhara) so that any health problems posed for shellfish downstream can be contained.
7. The Licensee shall, on completion of the works:
- (i) provide detailed location coordinates for the completed work;
 - (ii) within two months, provide certification by a Chartered Engineer that the works have been completed in accordance with the plans/drawings approved of by the Minister and with the said Specifications or Codes of Practice;
 - (iii) ensure that no material or debris remains at the site;
 - (iv) make good, to the satisfaction of the Minister, any damage caused to the foreshore;
 - (v) agree a sampling programme to monitor water quality with the Department of Communications, Marine and Natural Resources before

the scheme comes into operation in order to ensure compliance with SI No, 268 of 2006.

8. The conditions of this licence are subject to review in the light of any legislative changes or improved standards in the interest of public health.

*For inspection purposes only.
Consent of copyright owner required for any other use.*

2 March 2007

DRAFT SPECIFIC CONDITIONS (Section 10 Permission)

1. The Grantee:

- (i) shall use that part of the foreshore, the subject matter of this permission, for the purpose of constructing and maintaining (a) a 400mm diameter Emergency Outfall at Old Quay Pump House, (b) a 200mm diameter Scour Valve Chamber and (c) a 250mm diameter Rising Main and for expanding the capacity and maintaining a 250mm diameter outfall at Black Rock as part of Cork County Councils Sewerage Treatment Plant development for the town of Bantry, Co Cork (hereinafter referred to as the works), in accordance with the plan and location drawings*, as submitted to, and approved by, the Minister for Communications Marine and Natural Resources; (hereinafter referred to as the Minister) and for no other purpose whatsoever;

*** Drawing No's. A8763-N101 A8763-N102, A8763-N103, A8763-N105 and A8763-N110**

- (ii) may also use adjacent foreshore but only to the extent necessary for the purpose of constructing and maintaining the said works and shall restore the said foreshore to its proper condition immediately after such use.

2. The Grantee shall, prior to commencement of works:

- (i) provide certification by a Chartered Engineer stating that the works have been designed in accordance with relevant Irish or British Standard Specifications or Codes of Practice for strength, stability and durability, taking into account current building regulations and safety legislation;
- (ii) provide for the approval of the Minister, a detailed Construction and Method Statement for carrying out the works and for the disposal of excavated material;
- (iii) give the Minister for Communications, Marine and Natural Resources 14 days notice;
- (iv) apply to the Commissioners of Irish Lights for sanction of new navigational aids/buoyage and/or alteration of existing navigational aids/buoyage;
- (v) notify the British Admiralty Hydrographic Office, of the location, nature and timing of the works;
- (vi) arrange for the publication of a local marine notice. This local marine notice should give a general description of operations and approximate dates of commencement and completion. A notice in a locally read newspaper at least two weeks prior to commencement of operations will suffice;

- (vii) notify the local Harbour Master with respect to the safety of navigation of marine traffic in the river.

3. The Grantee shall, during the construction phase:

- (i) ensure that floating plant or machinery used in connection with the works is adequately lit if in place at night or during times of poor visibility;
- (ii) ensure that all vessels engaged in the works comply fully with the relevant certification requirements;
- (iii) ensure that work is carried out in an environmentally friendly manner so as to minimise the impact on the foreshore and the surrounding environs;
- (iv) ensure that proper environmental controls and monitoring are carried out during the construction phase of the various elements, as there are major aquaculture farming activities in the harbour. It is essential that construction/excavation/dredging sediments are not released into the water column;
- (v) comply with all lawful instructions given by the Heritage and Planning Division of the Department of the Environment, Heritage and Local Government in relation to work on the foreshore area the subject of this Permission or the surrounding area;
- (vi) ensure that all impacts into the foreshore and sub-tidal zone are subject to archaeological monitoring. This should be undertaken by a suitably qualified archaeologist with marine/underwater experience and should be licensed to the Department of Environment, Heritage and Local Government;
- (vii) ensure that the monitoring licence application is accompanied by a detailed method statement and this should include details of plant/dredger type, duration of works and extent of works. The methodology should also include a find's retrieval strategy and details of the proposed archaeological monitoring team;
- (viii) ensure that if significant archaeological remains are found during the archaeological monitoring, the monitoring archaeologist will have the power to have the works stopped. The works operator shall be prepared to move away from the area until the potential archaeology has been properly inspected and fully resolved. The developer shall be prepared to be advised by the Underwater Archaeology Unit of the Department of Environment, Heritage and Local Government in this regard;
- (ix) ensure the diffusers are marked by a high visibility coloured float or similar to indicate position of same and hence discourage vessels anchoring in close proximity.

4. The Grantee shall ensure, that, in the event of any spillage or accident occurring below the high water mark of ordinary or medium tides, or above the high water mark, which may impact on the foreshore during the carrying out of the works the

subject of this Permission, or during operations following the completion of the works, the Irish Coast Guard is notified immediately by telephone.

5. (a) The effluent discharged from the treatment plant outfall pipe shall have a maximum 5-day B.O.D. concentration of 25 mg/l and a maximum suspended solids concentration of 35 mg/l, on a 95% basis. The maximum total daily B.O.D. load discharged from the treatment plant outfall shall not exceed 40 kgs;
 - (b) The effluent from the Waste Water Treatment Plant shall be sampled twice monthly immediately downstream from the plant and immediately prior to discharge. These samples shall be tested for 5-day B.O.D. and for suspended solids concentration;
 - (c) A report on the operation of the treatment plant and compliance with these discharge conditions, including the results of the sample analyses above, shall be submitted to the Department of Communications, Marine and Natural Resources, Coastal Zone Management Division, annually;
 - (d) Should sample analysis indicate that the plant is not operating to design specifications the Grantee shall inform the Department of Communications, Marine and Natural Resources, Coastal Zone Management Division, as soon as possible;
 - (e) The analyses should be carried out in an accredited laboratory;
 - (f) The cost of all the aforementioned sampling and monitoring shall be borne by the Grantee.
6. The Grantee shall ensure that any malfunction or stoppage breakdown of the effluent treatment system shall be notified immediately to the local Sea Fishery Officers of the Sea Fisheries Protection Authority,(Udaras um Chosaint Iascaigh Mhara) so that any health problems posed for shellfish downstream can be contained.
7. The Grantee shall, on completion of the works:
- (i) provide detailed location coordinates for the completed work;
 - (ii) within two months, provide certification by a Chartered Engineer that the works have been completed in accordance with the plans/drawings approved of by the Minister and with the said Specifications or Codes of Practice;
 - (iii) agree a sampling programme to monitor water quality with the Department of Communications, Marine and Natural Resources before the scheme comes into operation in order to ensure compliance with SI No, 268 of 2006.

8. The Grantee shall ensure that the engineering detail of the main outfall (400mm diameter) will be amended as part of the proposed marina development when the layout for same is finalised.
9. The conditions of this permission are subject to review in the light of any legislative changes or improved standards in the interest of public health.

*For inspection purposes only.
Consent of copyright owner required for any other use.*

**Divers report – Bantry Outfall pipe 16th October 2007 – Ref 2007TRM1004****Dive Team**

Supervisor Mick Hyland
Diver Gavin Bean
Diver Tom Czere
Diver Ciarán Duffy

OUTFALL PIPE IN BANTRY

Tuskar Rock Marine were engaged to conduct an underwater video survey of a sewerage outfall pipeline at the above mentioned location.

The pipe was located approximately 10m to the left of a small opening in the main sea/roadway wall on the approach road to Bantry Town past the graveyard on the left.

The pipe is sitting on the seabed incorporated into a concrete block. The concrete block covers the entire pipe except for a 2m section approximately 10m inshore of the diffuser. At this point the pipe is exposed and a flange is visible. There are areas along the pipe where there is freespansing - max depth of freespansing is 200mm. The pipe itself is made from cast iron, 240mm I.D with a wall thickness of approx 18mm. Where the pipeline is visible, there are signs of corrosion.

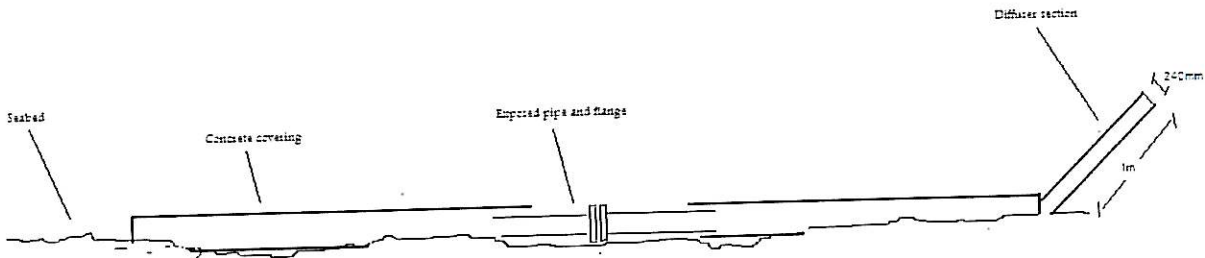
A one meter section at end of pipeline sticks up at approximately 45 degrees from the seabed and has a slight covering of marine growth on it - the open ended section is the diffuser on the pipe and it appeared to be diffusing normally as can be seen on the DVD.

Using a measuring tape a depth reading was taken from the highest point of the diffuser to the water level which was 4.060m. Then a reading was taken from seabed to water level which was 5.100m. The time of the reading was 17:48 - please refer to Bantry tide tables attached.

Distance measurements were taken and recorded by a Cork Co Co Engineer from two points along the pipe to a fixed point at the road opening.

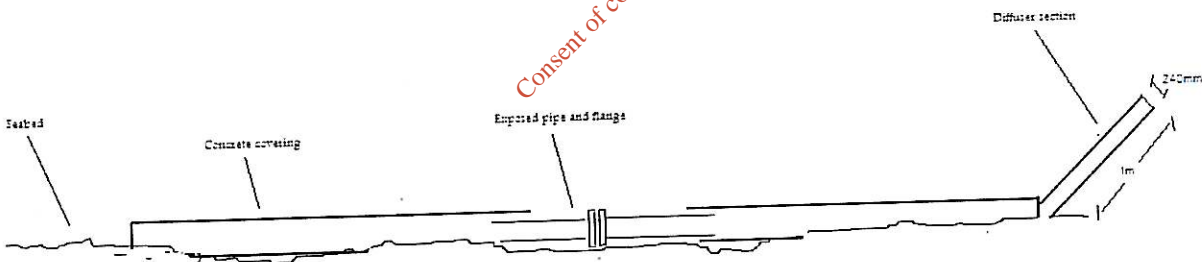
Mick Hyland

pp Mick Hyland
Dive Supervisor



Drawing not to scale

*For inspection purposes only.
Consent of copyright owner required for any other use.*



Drawing not to scale



BANTRY TZ: GMT/BST Units: METRES Datum: Chart Datum

16/10/2007	01:52	0.88
16/10/2007	08:11	2.88
16/10/2007	14:13	0.94
16/10/2007	20:23	2.85

*For inspection purposes only.
Consent of copyright owner required for any other use.*

worldwide underwater support

Registered in Ireland No. 139525

Tuskar Rock Divers Ltd

VAT No. IE4819841A