

MM/07/4084L05Rev.1
24th October 2008

**Administration,
Licensing Unit,
Office of Climate, Licensing & Resource Use,
Environmental Protection Agency,
Headquarters,
P.O. Box 3000**

Dear Sir or Madam,

RE: W0244-01 Waste Licence Application for Waterford WWTP

Response to Notice in accordance with Article 14(2)(ii) of the Waste Man (Licensing) Regulations

In accordance with Article 14(2)(b)(ii) of the Waste Man (Licensing) Regulations, please find enclosed additional information in relation to the gas burner for the excess gas produced by the digesters that is not required for the boilers.

Included are 2 no. drawings, one is a P&ID of the gas burner (Drawing C1197-1211) and the second is a diagram of the gas collection system (Drawing 28682-003-GS210). These should be viewed in conjunction with Drawing C1197-1024 and Attachment C1197-8418 (included with the previous response), which detail the overall process of gas production, storage and use.

With regard to the burner, the burner temperature is typically 1000 – 1100⁰C at the nozzle, i.e. where the gas is burned. The exit temperature is typically 500 – 600⁰C. The air is drawn in at the base of the burner; as the gas is released from the exit point, it draws air in from the atmosphere.

The typical composition of the gas before burning is 60 – 65% methane and 30 – 35% CO₂ (carbon dioxide), once the gas is burned, the end products are H₂O and CO₂. The retention time is not predictable, as the gas storage will depend on the amount of gas produced and on the the demand of the boilers for the gas produced.

Dublin Office

The Tecpro Building,
Clonshaugh Business & Technology Park,
Dublin 17, Ireland.
T: + 353 1 847 4220
F: + 353 1 847 4257

AWN Consulting Limited
Registered in Ireland No. 319812
Directors: F Callaghan, C Dilworth,
T Donnelly, E Porter
Associate Director: D Kelly

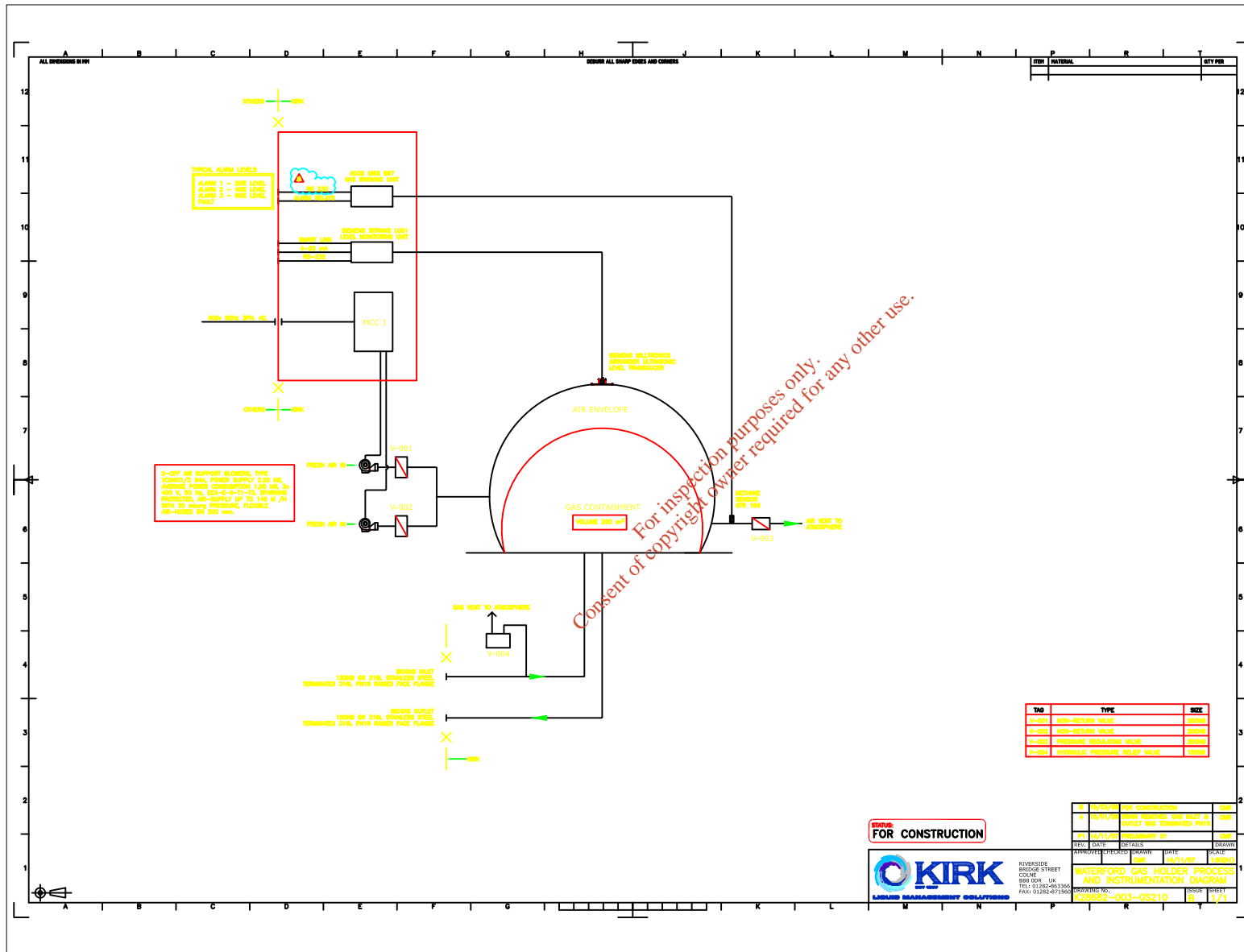
If you have any queries in relation to this response, please direct all formal enquires to Mr Ray Mannix of Waterford City Council. In addition, I would be happy to respond to any queries or questions.

Yours sincerely,



MAIREAD MORRISSEY
Senior Environmental Consultant

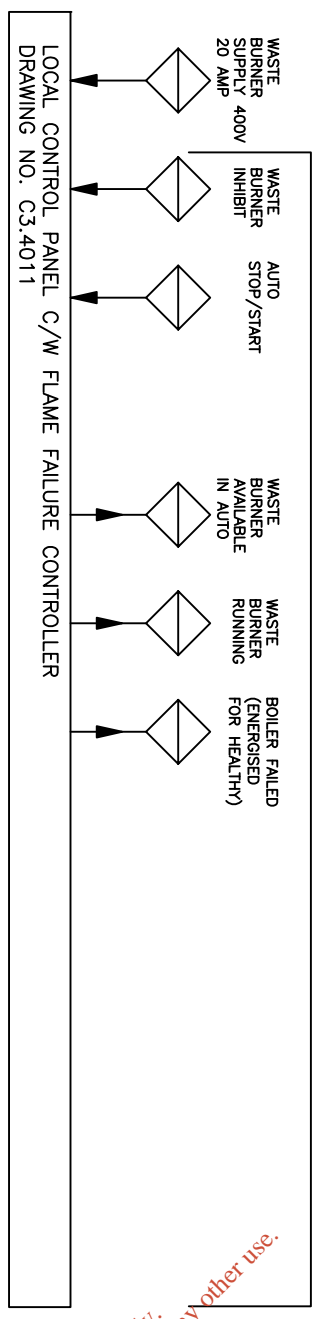
For inspection purposes only.
Consent of copyright owner required for any other use.



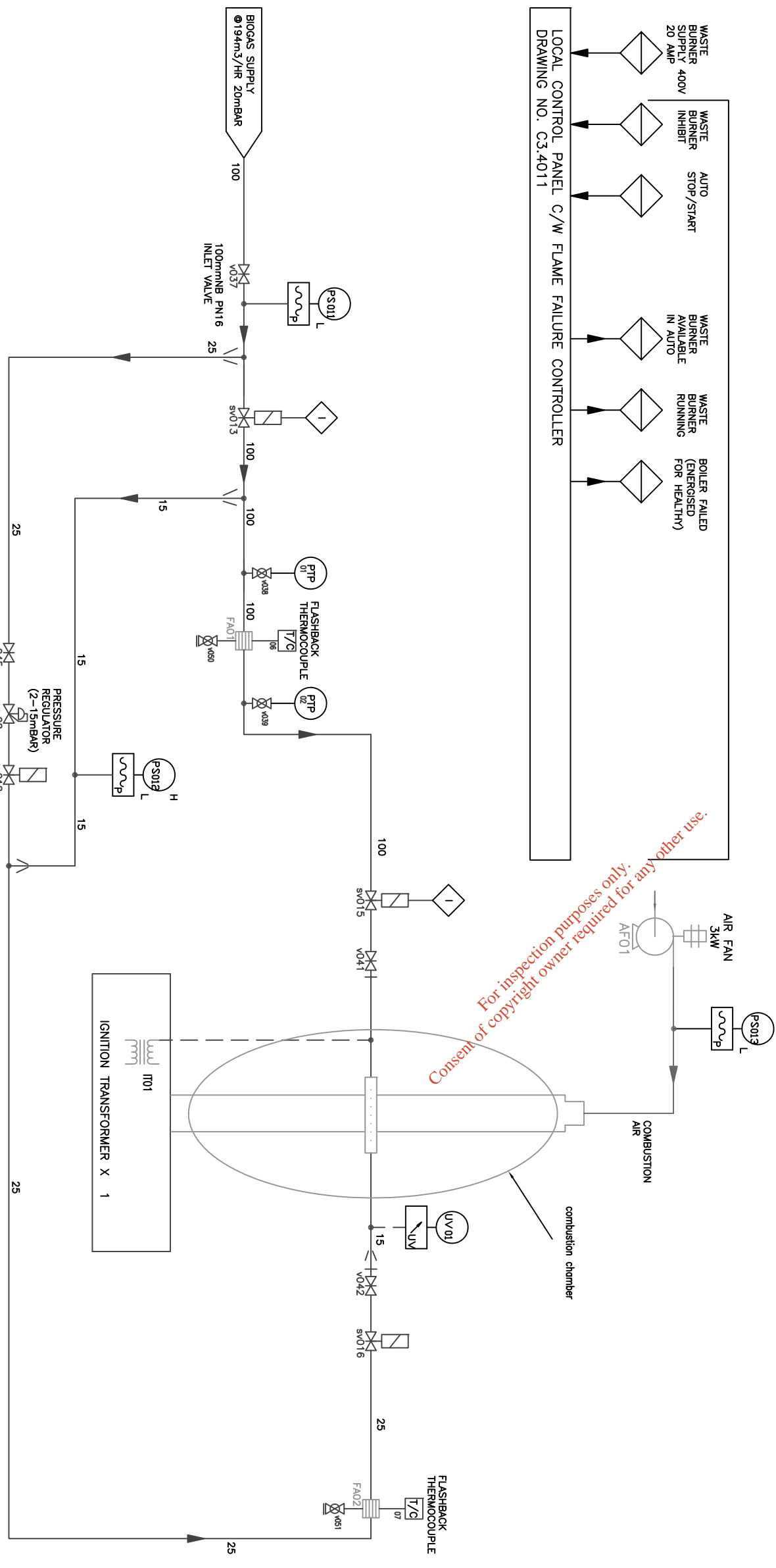
Consent of copyright owner required for any other use.

DO NOT SCALE - IF IN DOUBT ASK

isolation valve	air fan motor	pressure sensor	pressure test point	isolation valve	UV detector	solenoid valve	indicator	pressure regulator



For inspection purposes only. Consent of copyright owner required for any other use.



See Previous Issues For Past Revision Details

Rev.	Date	Description	Drawn
8		AMENDED DUE TO RECENT DEVELOPMENTS	

PTP - PRESSURE TEST POINT
 UV - ULTRAVIOLET SCANNER
 PS - PRESSURE SWITCH
 P - POSITIONER

eurograde

UNIT 10, 2ND FLOOR, CROWN TRADING CENTRE, CLAYTON ROAD, HAYES, MIDDLESEX UB3 1DU, TELE 0208 606 0420 FAX: 0208 606 0430.

DRAWING PRODUCED BY
EUROGRADE

DRAWN BY XXXXXX	CHECKED BY XXXX	APPROVED BY XXXX
DRAWING NUMBER C3.3996		REVISION NUMBER C

A.W.I. CONTRACT NO 1001

enpure

enpure

Empure Limited
 Empire House,
 Birmingham Road,
 Kidderminster, DY10 2SH,
 Tel: +44 (0)1562 820 010
 Fax: +44 (0)1562 820 008
 Internet: www.empure.co.uk

WATERFORD CITY COUNCIL

WASTE GAS BURNER MODEL V2000IND P. & I.D.
 P&ID DIAGRAM
 WATERFORD WWTW

Drawn	Checked	Approved	Original Size
CChalwood			A1
Date	Date	Date	Original Size
25/10/2007			NTS
Drwg. No.			Rev.
C1197-1211			B