



Plate 1: North-facing view of the estuary mouth, River Lee survey area in distance.

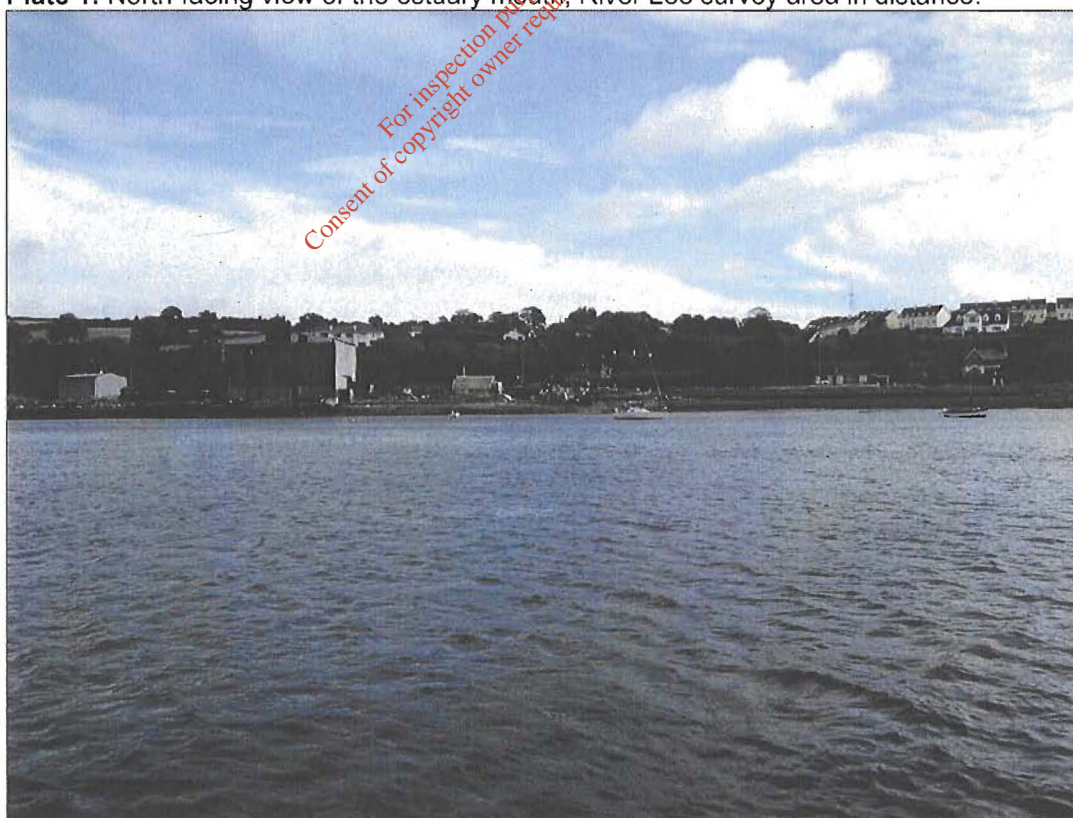


Plate 2: East-facing view across Marine Pipeline Survey Area, River Lee Estuary.



Plate 3: West-facing view across Marine Pipeline Survey Area, River Lee Estuary.

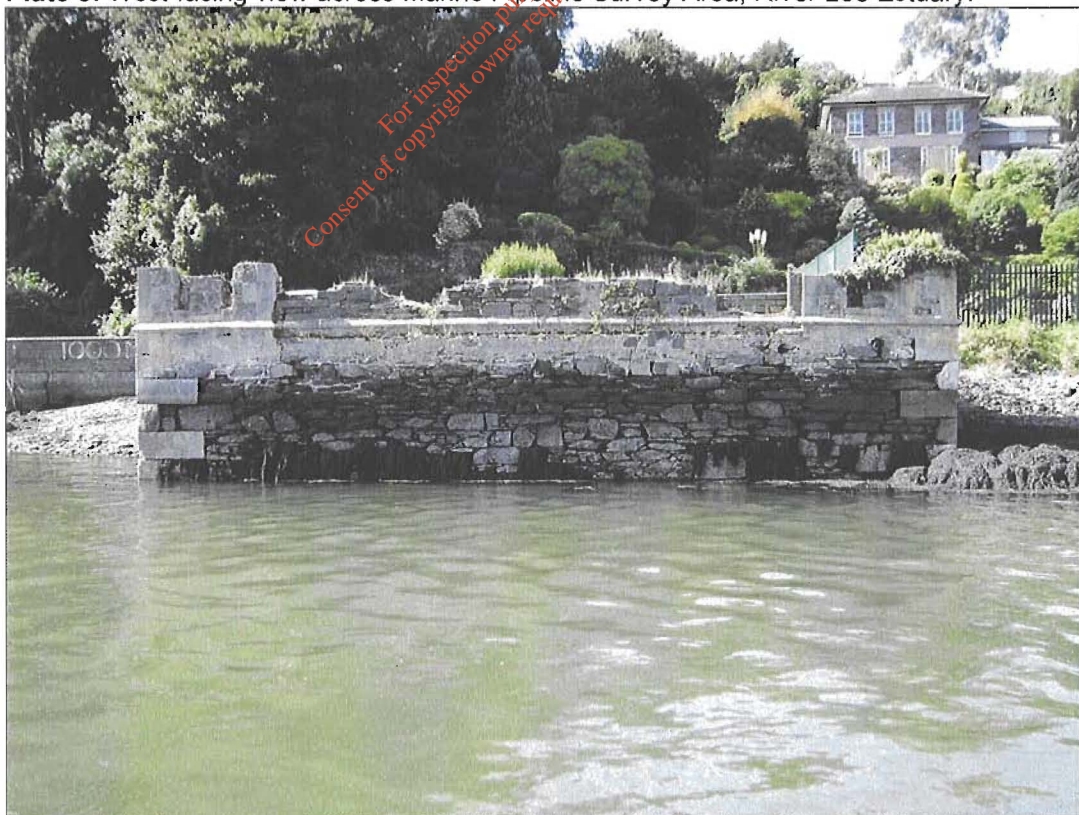


Plate 4: West-facing view of downstream (southern wing) masonry façade from the remains of the Royal Victoria Baths located on the west side of the River Lee.

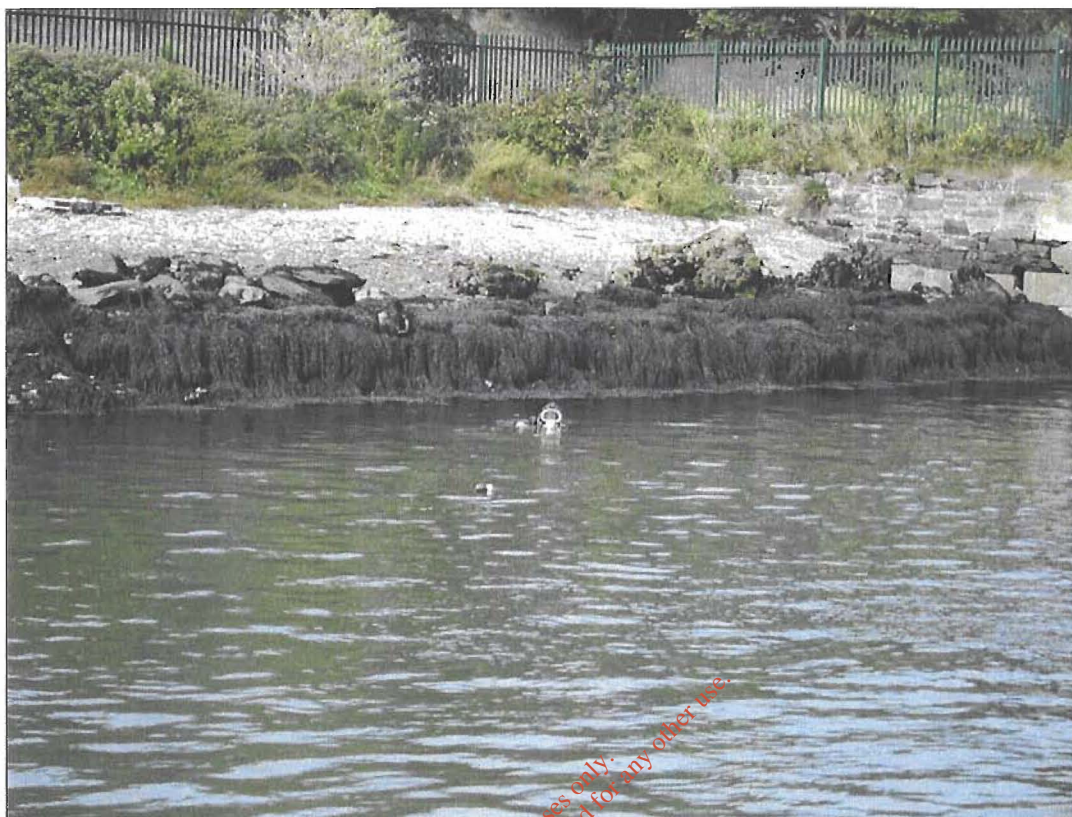


Plate 5: Northwest-facing view of western side of survey area, adjacent to the remains of the Swimming area of Royal Victoria Baths; diver in middle distance.

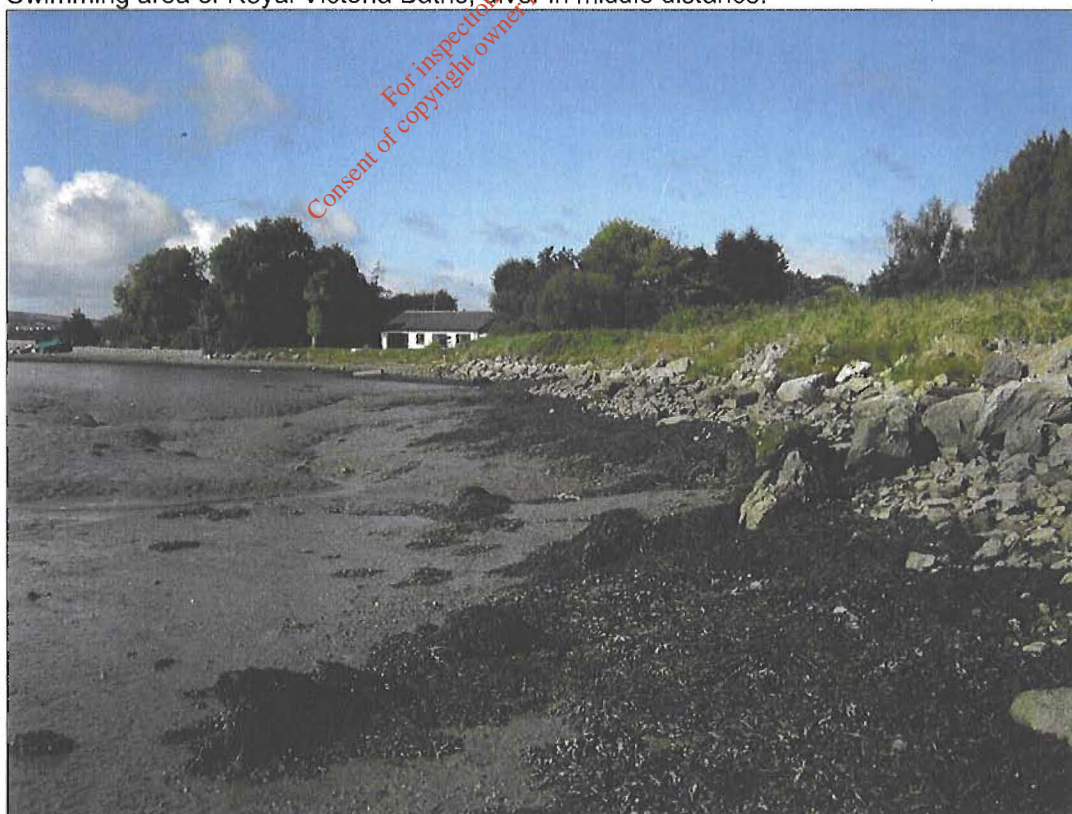


Plate 6: West-facing view of start of pipeline route along upper foreshore; shot taken from survey start-point (see Figure 6 for location).



Plate 7: South-Facing view of inter-tidal mud flats along the northern side of the Owenduff River, shot taken from survey start point (see Figure 6 for location).



Plate 8: North-facing view of upper foreshore c.350m along pipeline route (see Figure 6 for location); 1m scale.



Plate 9: South-facing view of inter-tidal mud flats along the northern side of the Owenduff River, shot taken from c.400m from survey start-point (see Figure 6 for location).

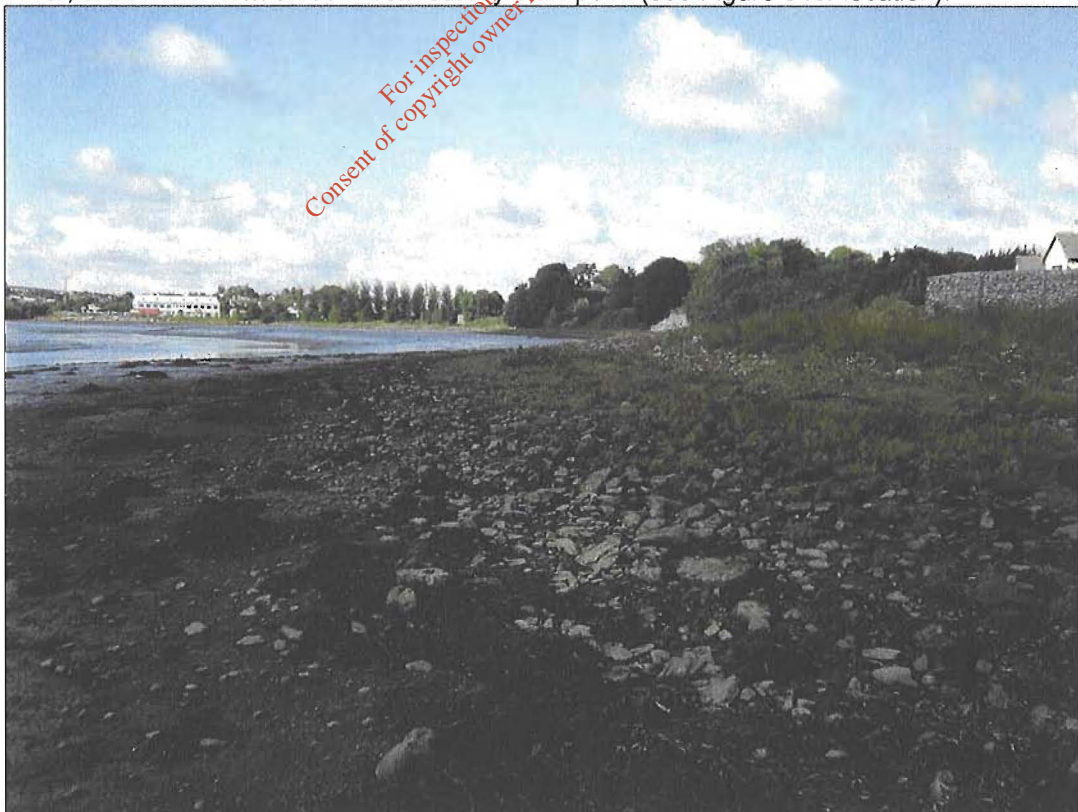


Plate 10: West-facing view of pipeline route along upper foreshore; shot taken c.350 along proposed pipeline route (see Figure 6 for location).



Plate 11: North-facing view of upper foreshore c.550m along pipeline route (see Figure 6 for location); 1m scale.

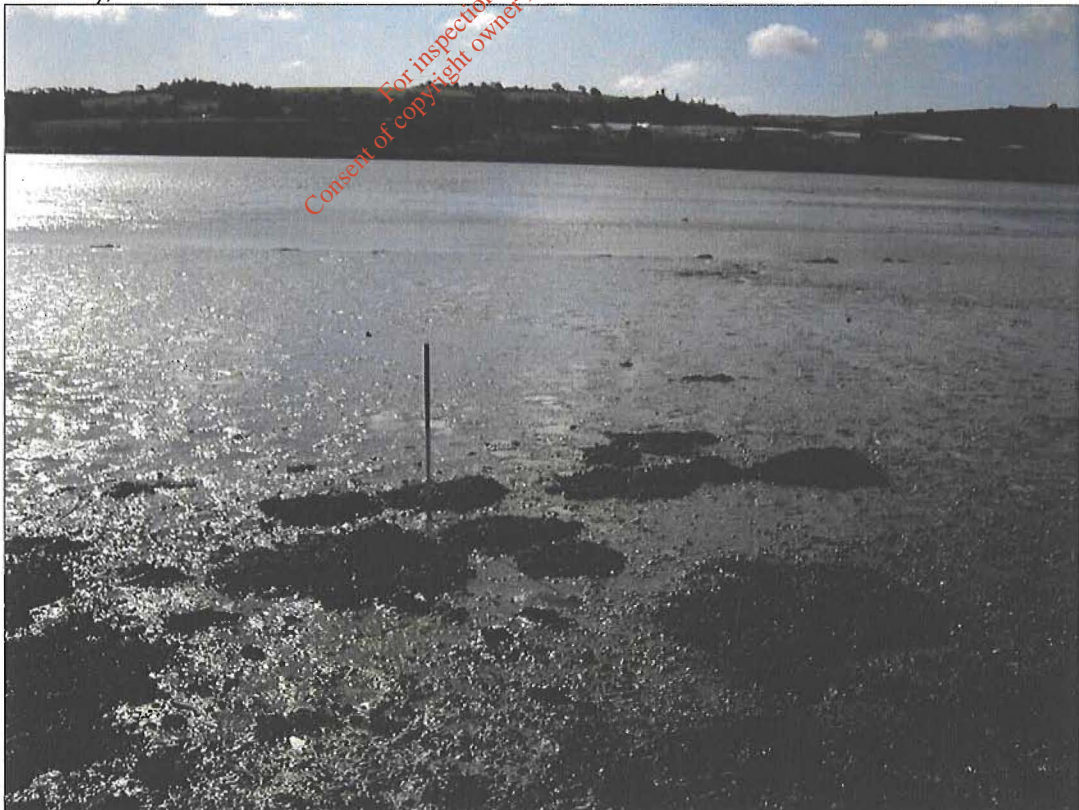


Plate 12: South-facing view of inter-tidal mud flats along the northern side of the Owenduff River, shot taken from c.600m from survey start-point (see Figure 6 for location); 1m scale.



Plate 13: West-facing view of pipeline route along upper foreshore; shot taken c.550 along proposed pipeline route (see Figure 6 for location).



Plate 14: North-facing view of upper foreshore c.800m along pipeline route (see Figure 6 for location); 1m scale.

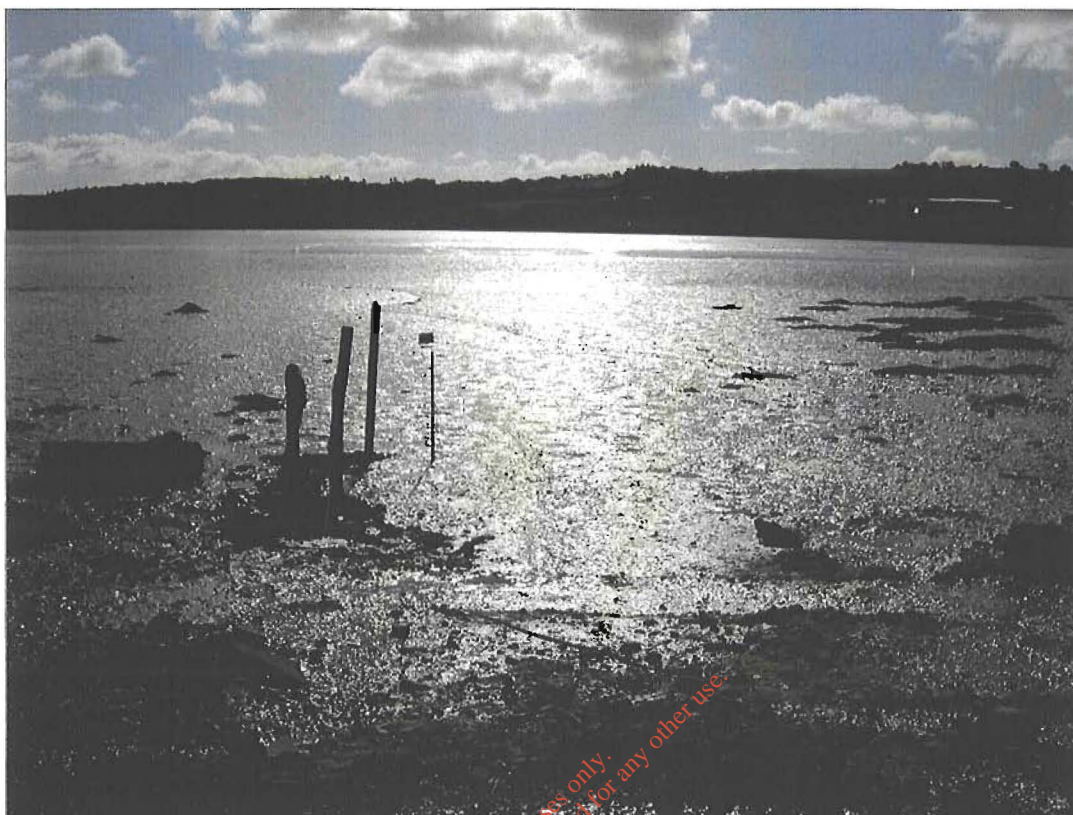


Plate 15: South-facing view of inter-tidal mud flats along the northern side of the Owenduff River, shot taken from c.850m from survey start-point (see Figure 6 for location); three modern mooring posts in foreground (1m scale).



Plate 16: West-facing view of pipeline route along upper foreshore; shot taken c.800 along proposed pipeline route (see Figure 6 for location).



Plate 17: North-facing view of upper foreshore c.100m along pipeline route (see Figure 6 for location); 1m scale.

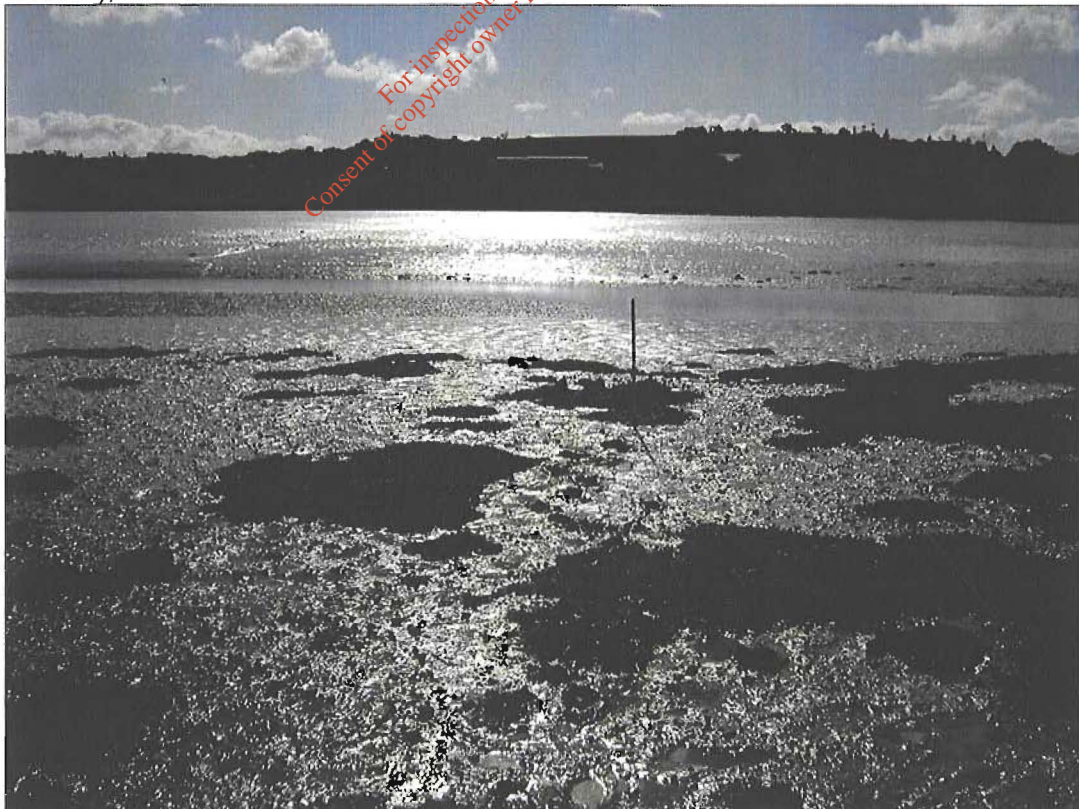


Plate 18: South-facing view of inter-tidal mud flats along the northern side of the Owenduff River, shot taken from c.1050m from survey start-point (see Figure 6 for location); 1m scale.

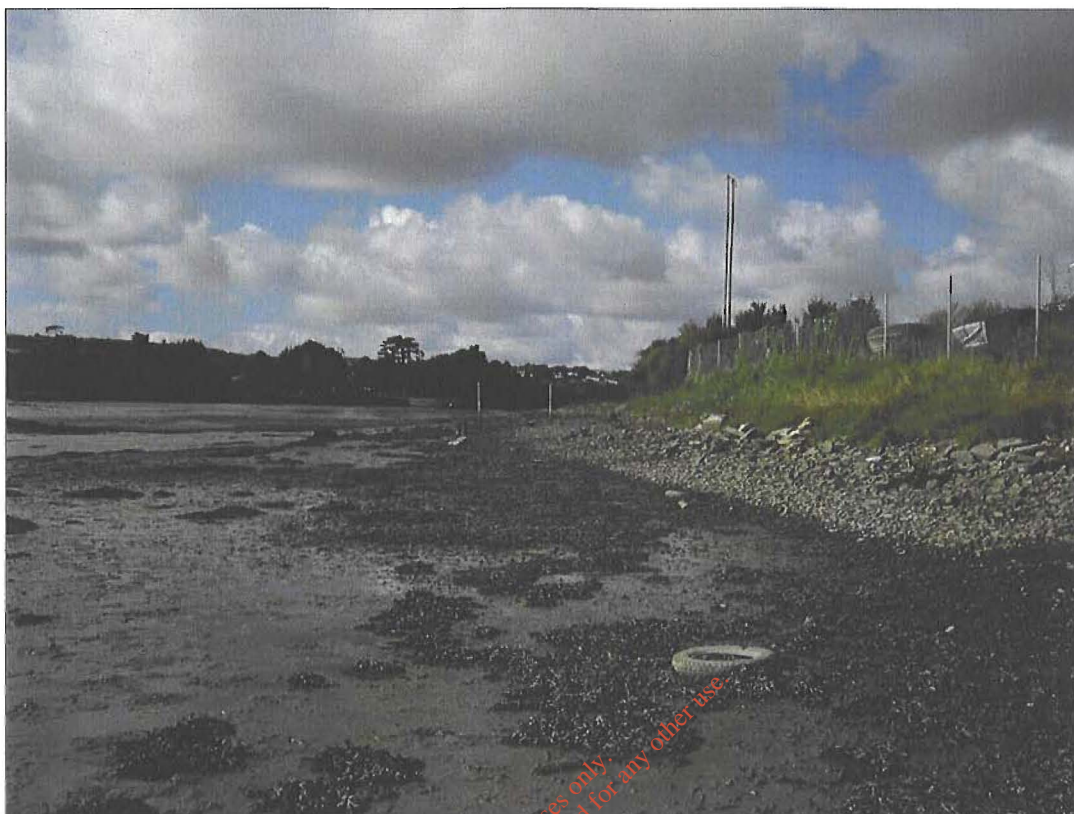


Plate 19: West-facing view of pipeline route along upper foreshore; shot taken c.1000m along proposed pipeline route (see Figure 6 for location).

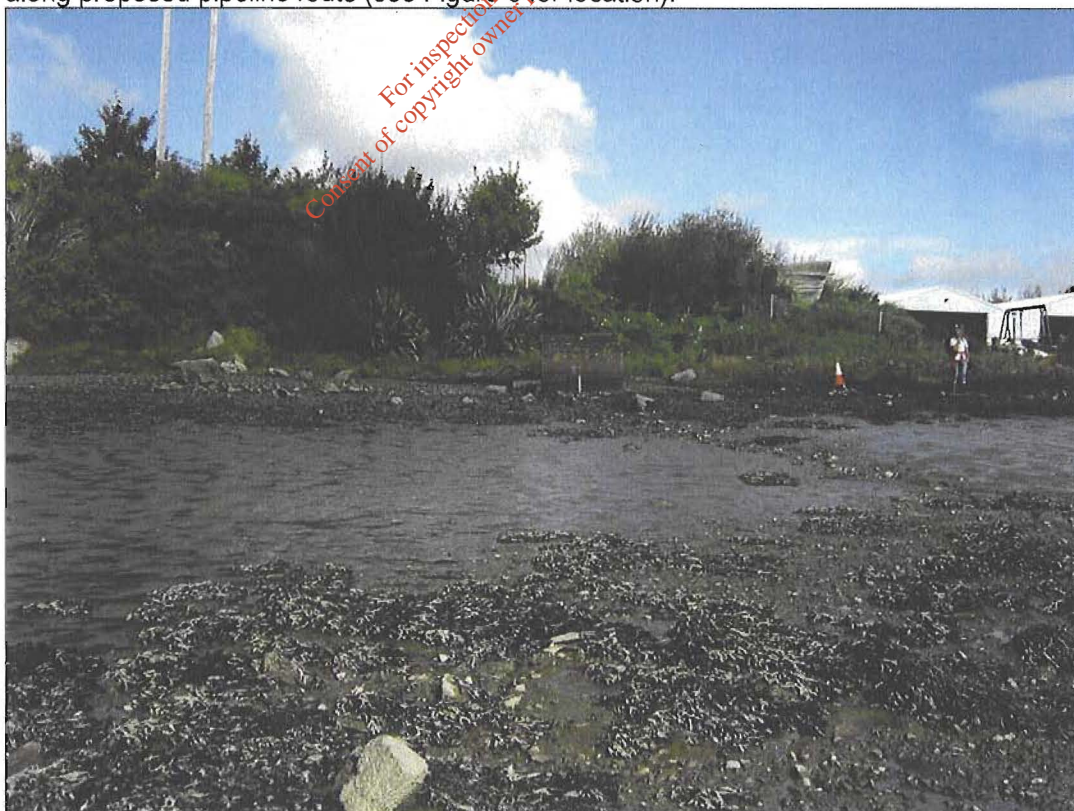


Plate 20: North-facing view of upper foreshore c.1120m along pipeline route (see Figure 7 for location).



Plate 21: South-facing view of central channel of the Owenduff River at Low Water. Note: rapids caused by rock armour protection for a previous pipeline across the river; shot taken 1120m along proposed pipeline route (see Figure 7 for location); 1m scale.

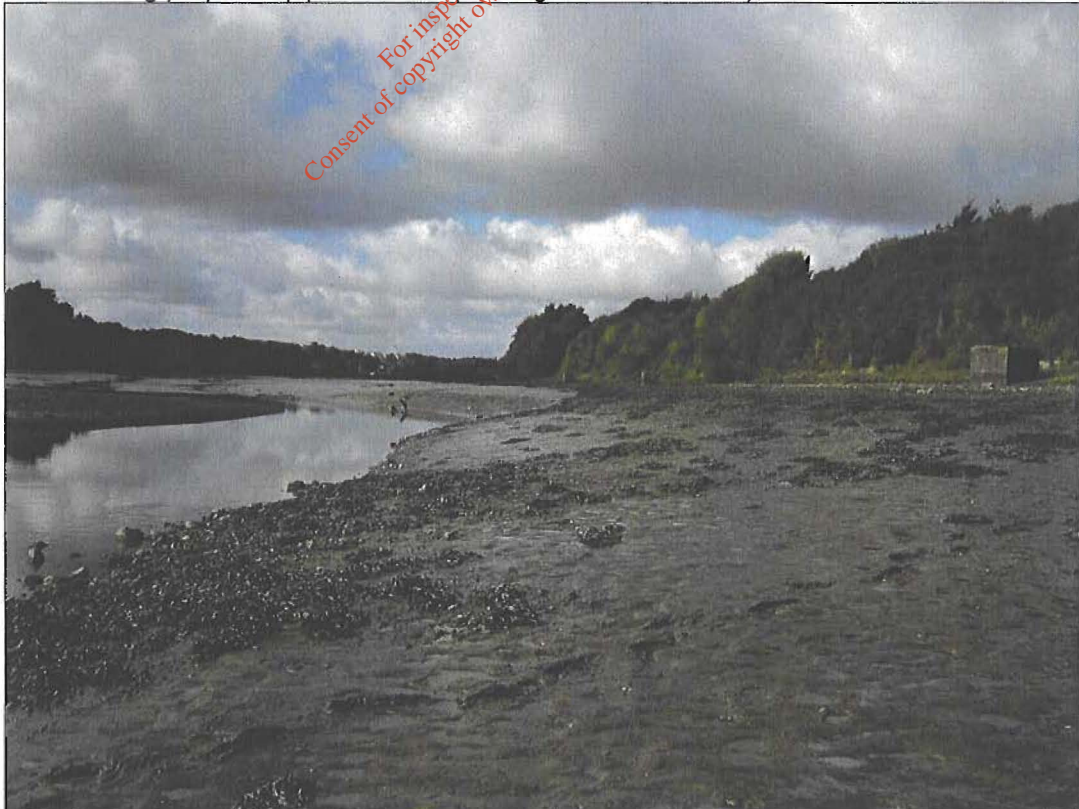


Plate 22: West-facing view of pipeline route along upper foreshore; shot taken c.1120m along proposed pipeline route (see Figure 7 for location).



Plate 23: North-facing view of small sand and gravel cliff face delineating the northern limit of the upper foreshore c.1280m along proposed pipeline route (see Figure 7 for location).

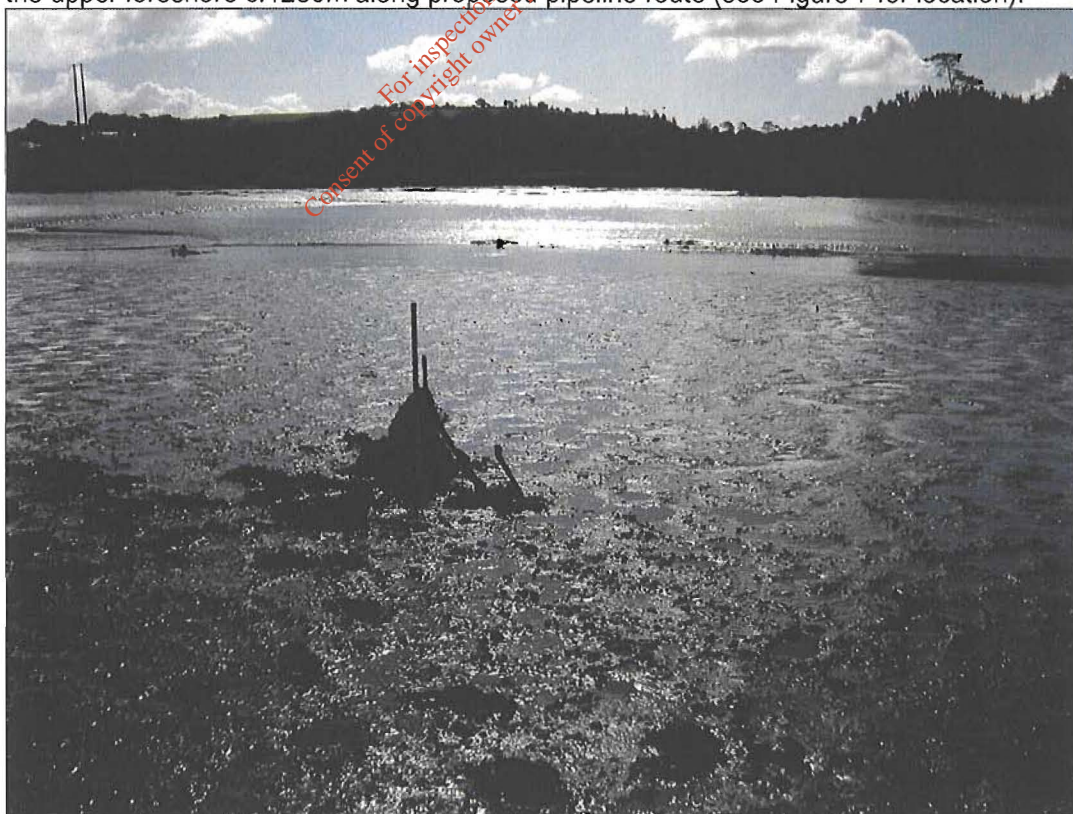


Plate 24: South-facing view of inter-tidal mudflats c.1280m along proposed pipeline route
Note: modern anchor in foreground (see Figure 7 for location); 1m scale.



Plate 25: West-facing view of inter-tidal mudflats c. 1280m along proposed pipeline route
Note: modern fragmentary remains of iron boat-trolley in foreground (see Figure 7 for location); 1m scale.



Plate 26: North-facing view of upper foreshore c. 1280m along proposed pipeline route
Note: partially buried iron-trackway for boat-trolley/ launch (see Figure 7 for location).

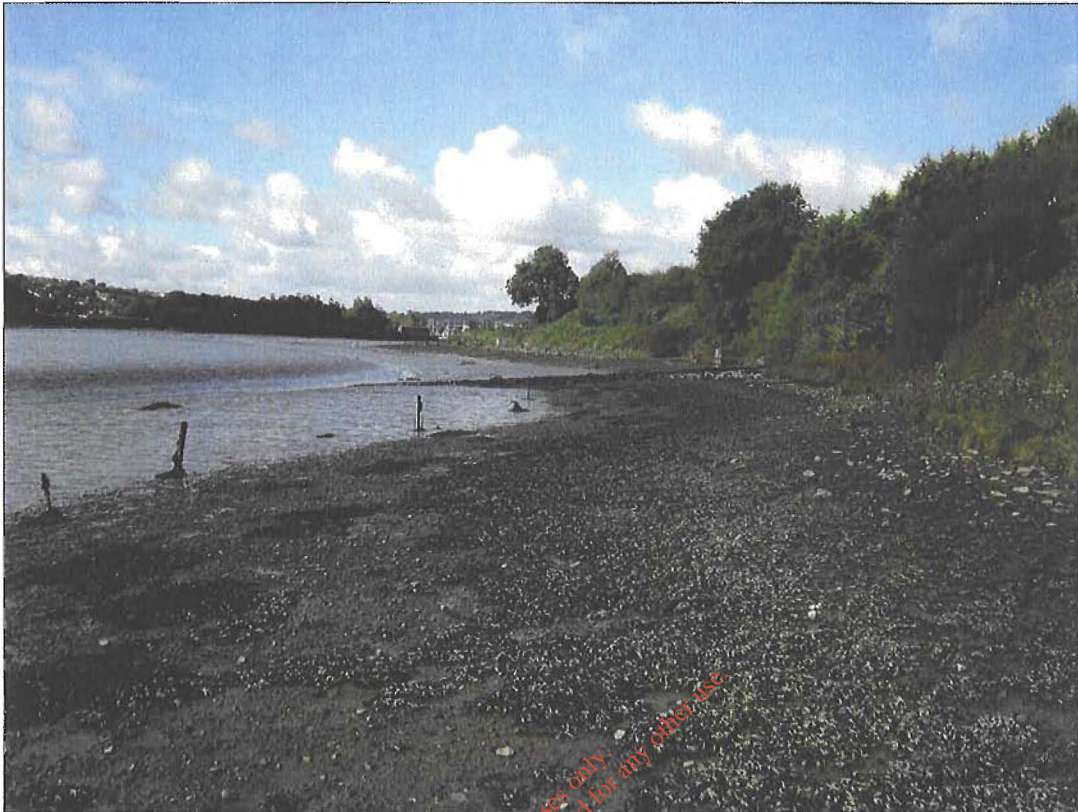


Plate 27: West-facing view of inter-tidal mudflats c.1450m along proposed pipeline route
Note: Iron-trackway for boat-trolley/ launch in distance (see Figure 7 for location).



Plate 28: North-facing view of iron-trackway for boat-trolley/ launch located c. c.1520m along proposed pipeline route (see Figure 7 for location); 1m scale.



Plate 29: South-facing view of iron-trackway for boat-trolley/ launch located c. c.1520m along proposed pipeline route (see Figure 7 for location), 1m scale.

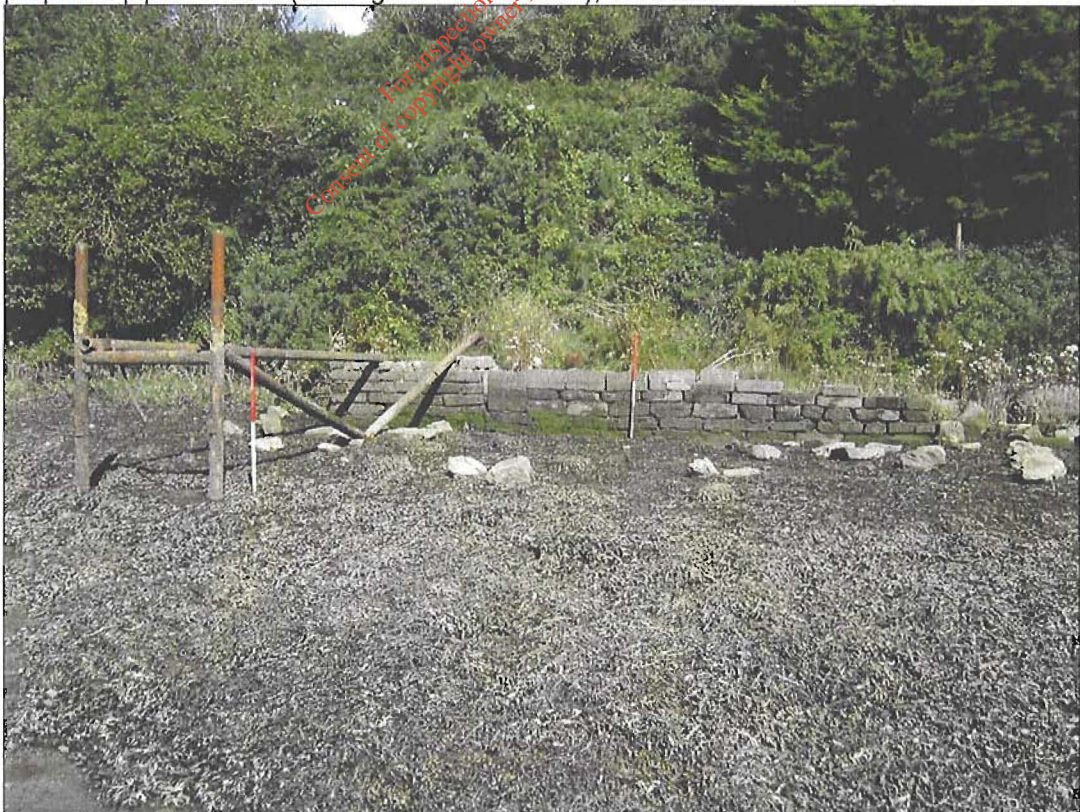


Plate 30: North-facing view of the remains of a modern boat Jetty c.1555m along proposed pipeline route (see Figure 7 for location); 1m scale.



Plate 31: North-facing view of the upper foreshore c.1700m along proposed pipeline route (see Figure 7 for location); 1m scale.



Plate 32: South-facing view of foreshore c.1700m along proposed pipeline route (see Figure 7 for location); mooring post middle distance (1m scale).

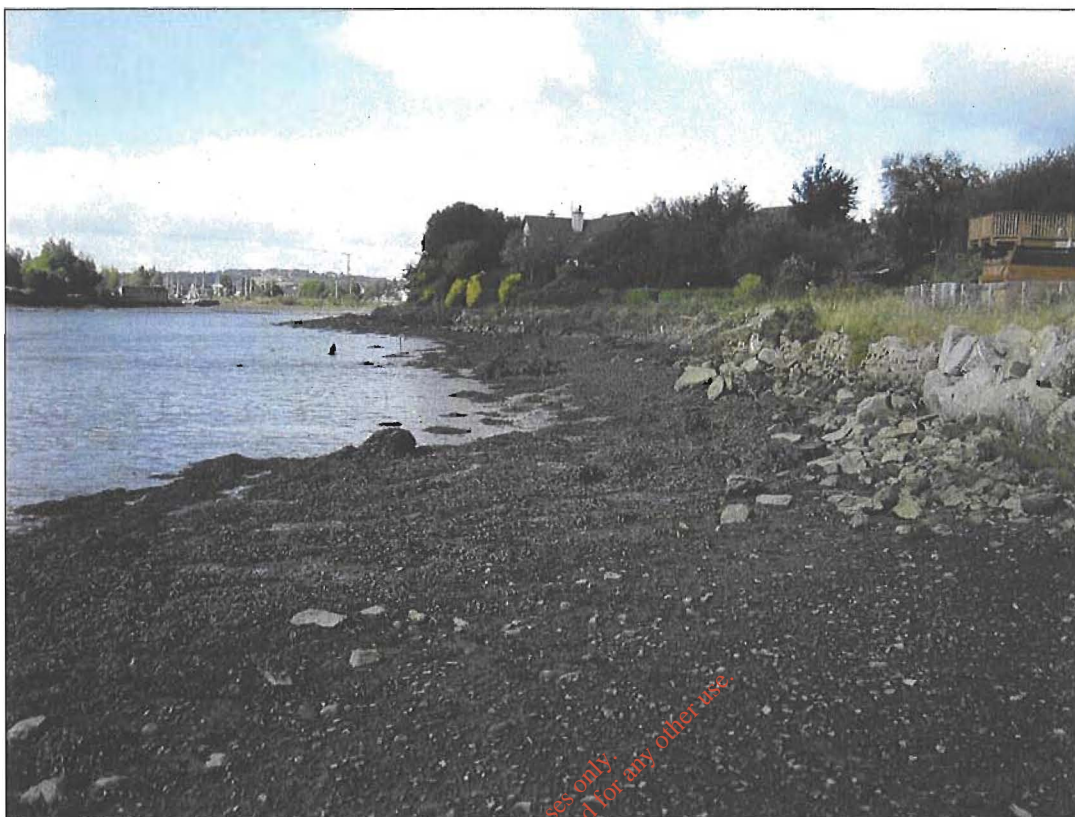


Plate 33: West-facing view of foreshore c. 1700m along proposed pipeline route (see Figure 7 for location).



Plate 34: North-facing view of the upper foreshore c. 1860m along proposed pipeline route (see Figure 7 for location); 1m scale.



Plate 35: South-facing view of foreshore c. 1860m along proposed pipeline route (see Figure 7 for location); 1m scale.

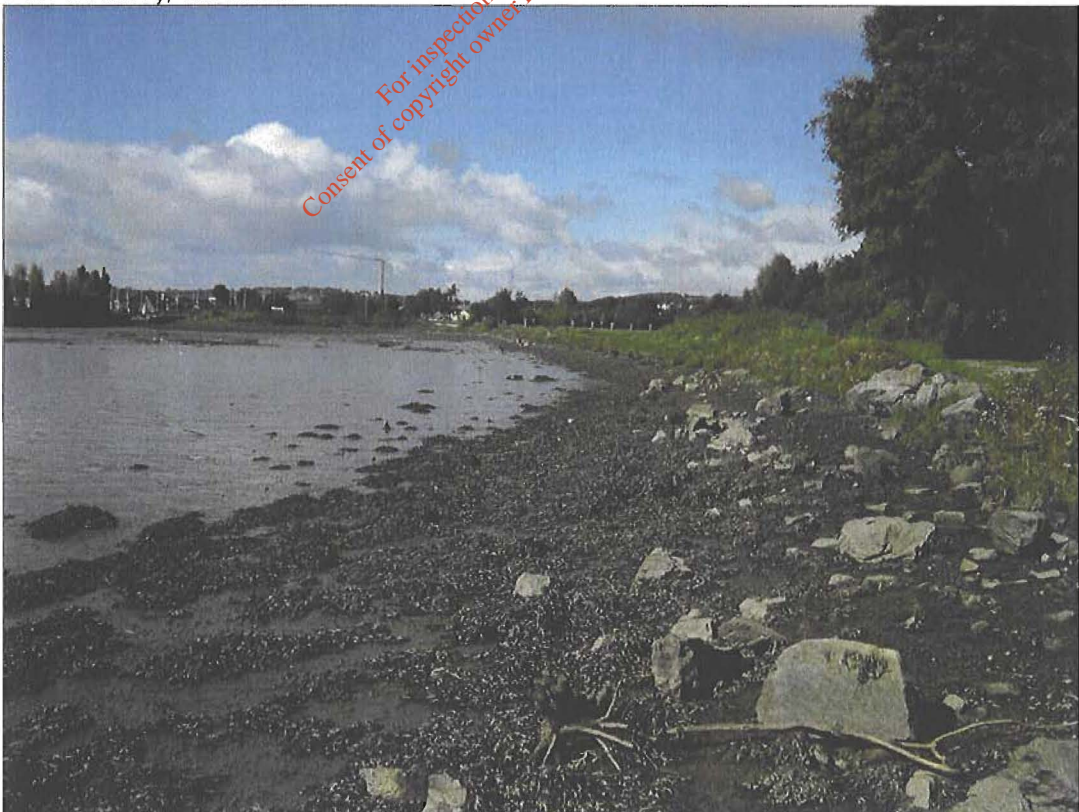


Plate 36: West-facing view of foreshore c. 1860m along proposed pipeline route (see Figure 7 for location).



Plate 37: East-facing view from survey end-point, c.70m west from end of proposed pipeline route (see Figure 7 for location).

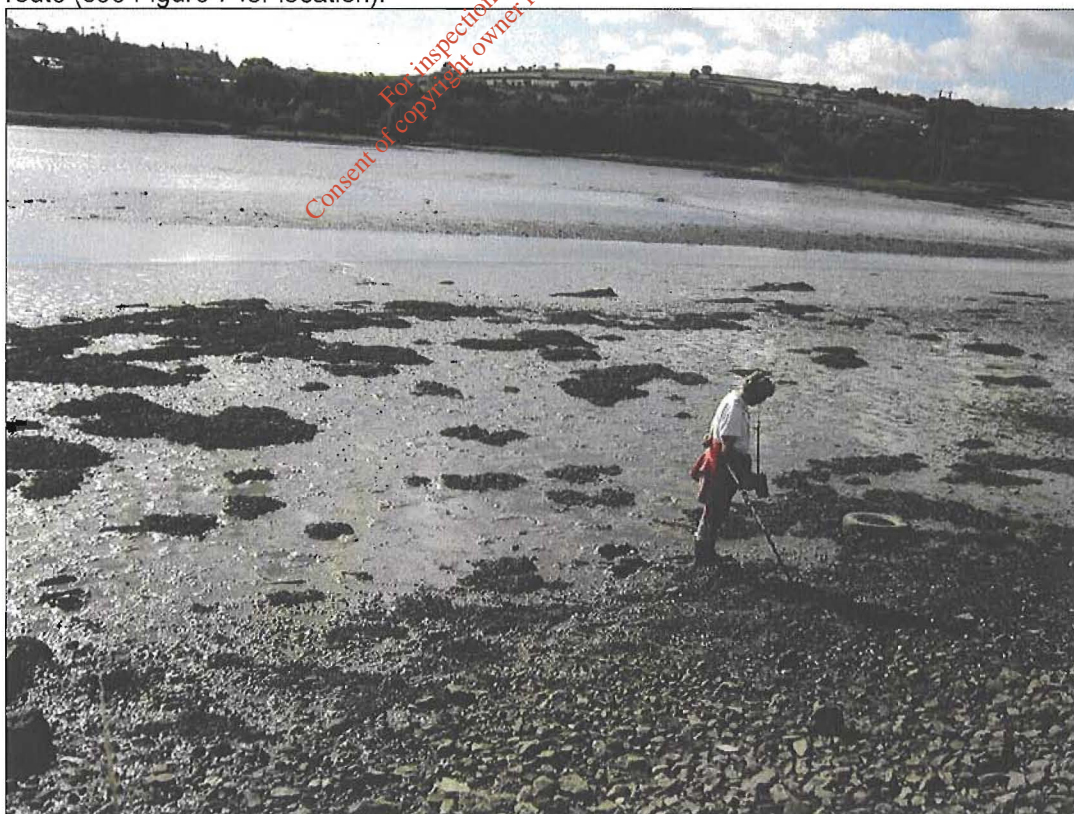


Plate 38: Working-shot of metal-detector use along survey area.

A D C O

THE ARCHAEOLOGICAL DIVING COMPANY LTD

- Environmental Impact Assessment
- Riverine, Intertidal, Underwater Assessment
- Underwater Investigation and Excavation
- Monitoring of Dredging and Marine Construction projects
- Maritime Heritage Consultancy
- Accords to HSA/HSE Diving at Work Regulations

Brehon House
Kilkenny Road
Castlecomer
Co. Kilkenny

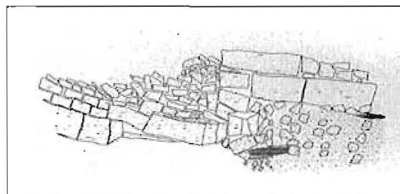
Phone +353 (0)56 444 0236
Fax +353 (0)56 444 0237
Internet www.adco-ie.com
E-mail info@adco-ie.com

In association with Valerie J. Keeley Ltd.
Archaeological Consultancy

Recording prehistoric logboat at
Gormanston, Co. Louth
GAS 2025 Irish Sea
Interconnector



Underwater elevation of bridge pier collapsed in
1763. River Nore Flood Alleviation Scheme



Iron cannon on site of 17th-century
timber wreck discovered during
dredging programme, Waterford
Harbour

