

Figure 4.22 : Cadmium concentrations (ng/l) at high water on a neap tide

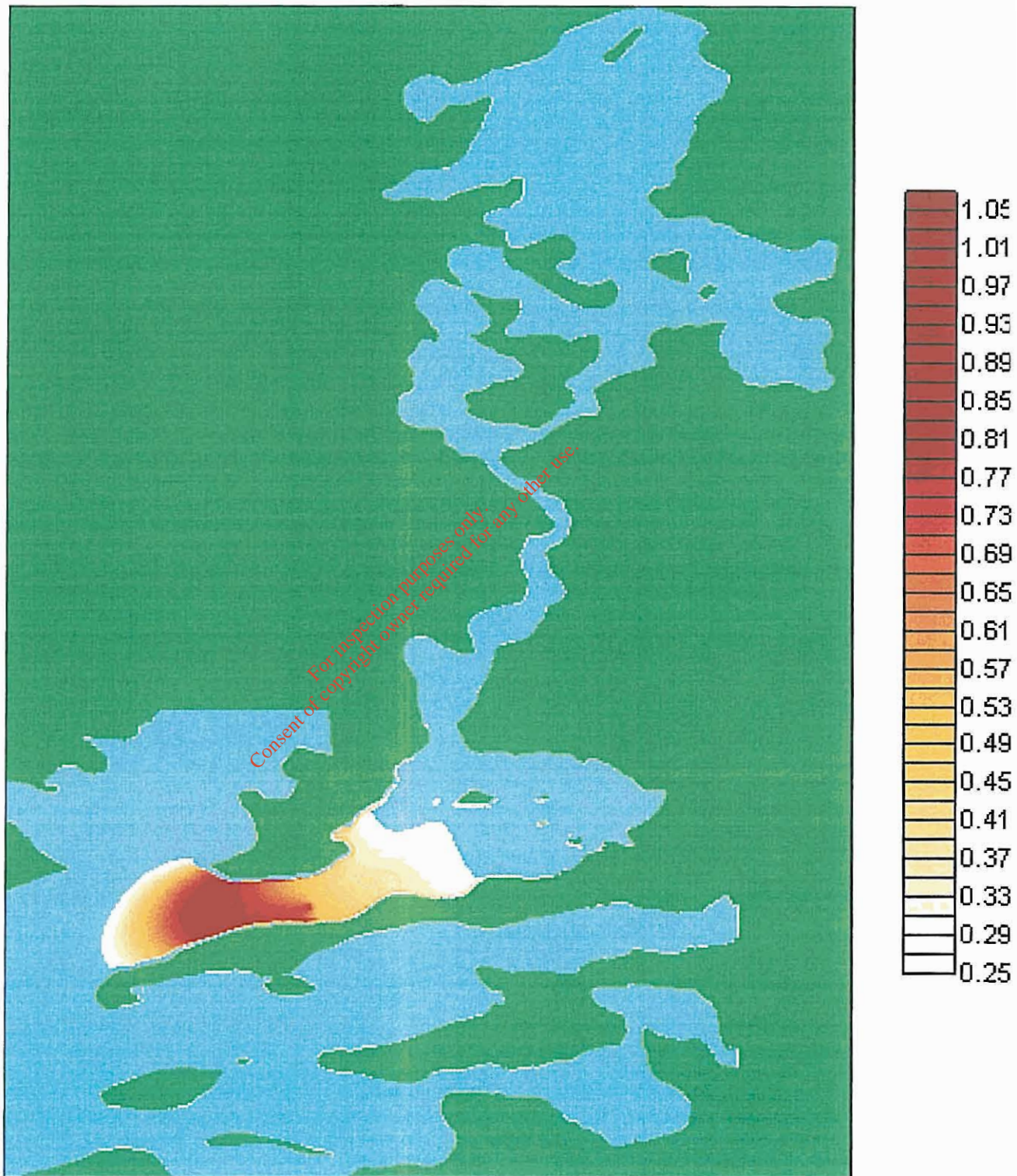


Figure 4.23 : Cadmium concentrations (ng/l) at mid-ebb on a neap tide

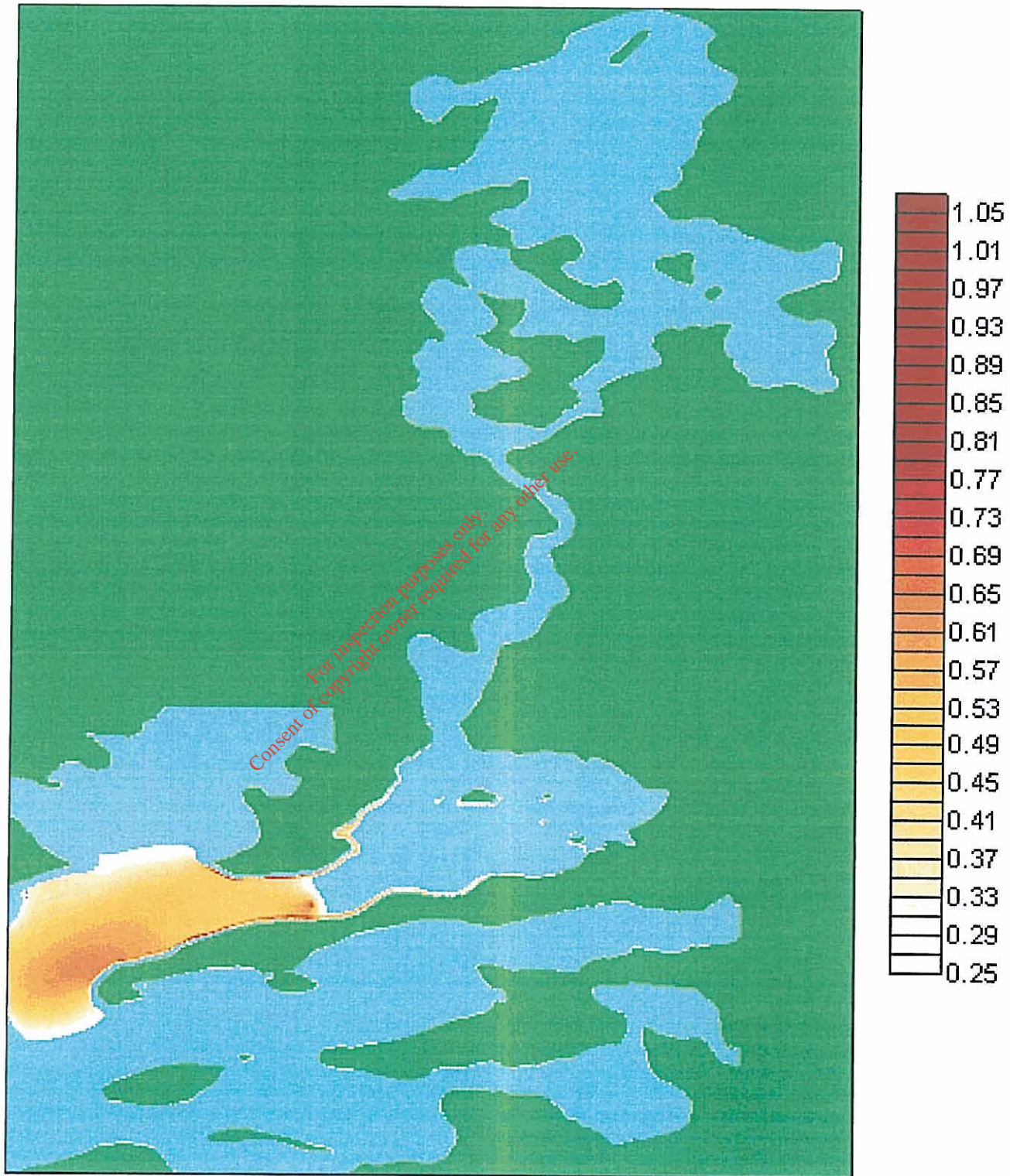


Figure 4.24 : Cadmium concentrations (ng/l) at low water on a neap tide

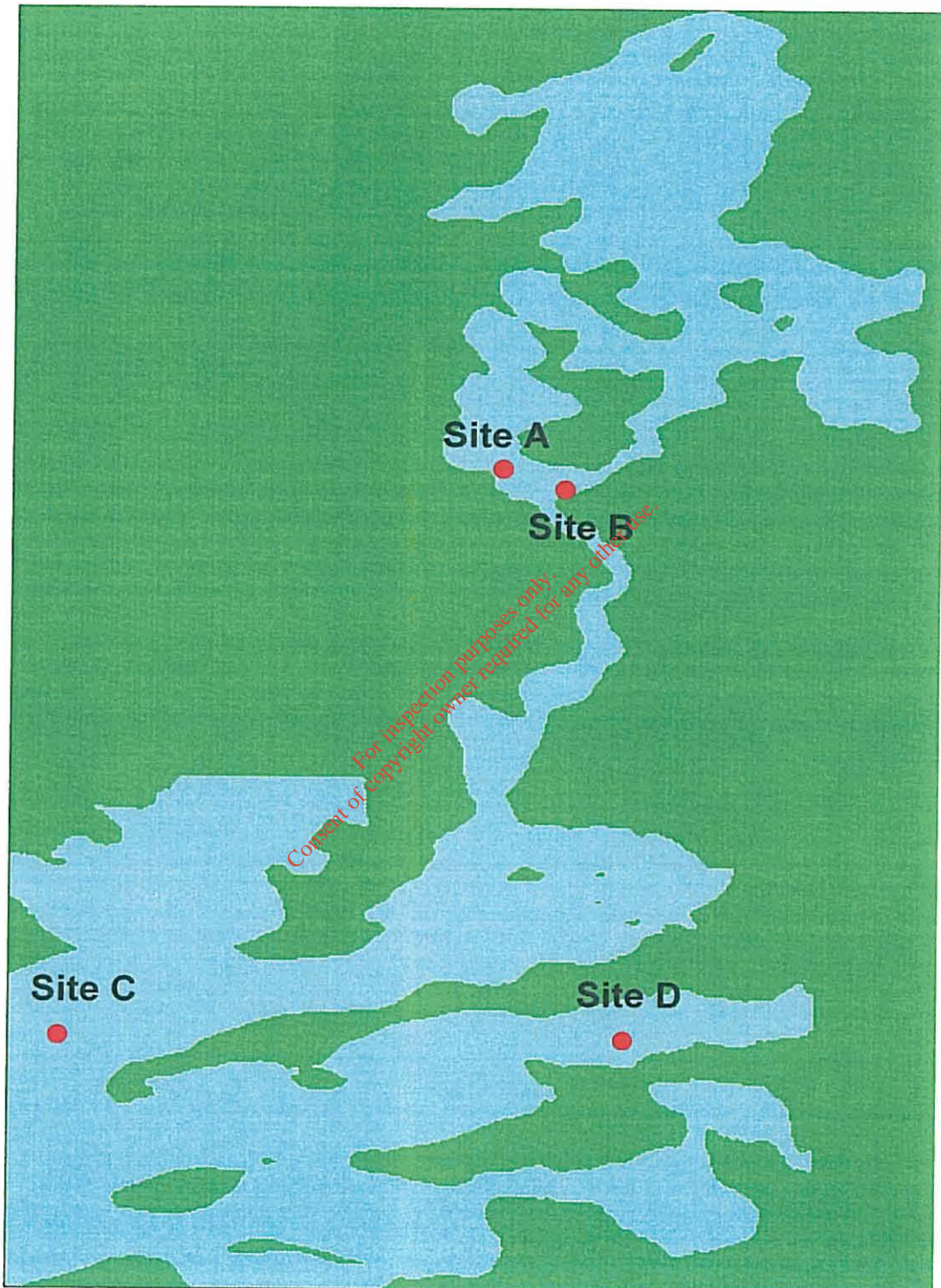


Figure 4.25: Location of observation points used in time-trace study

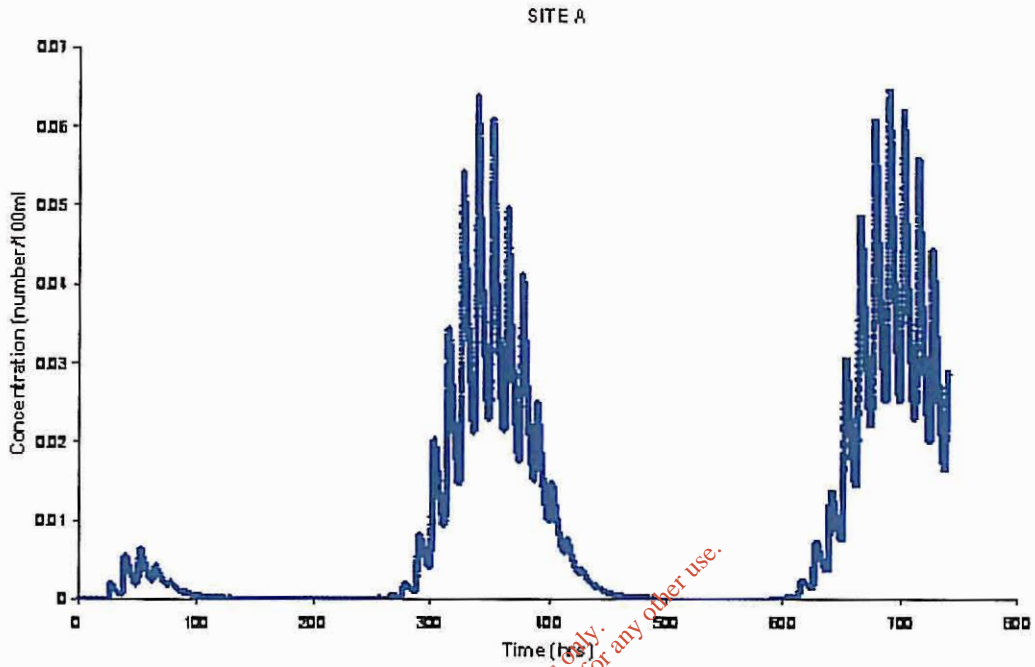


Figure 4.26: Variation of faecal coliform concentration at Point A

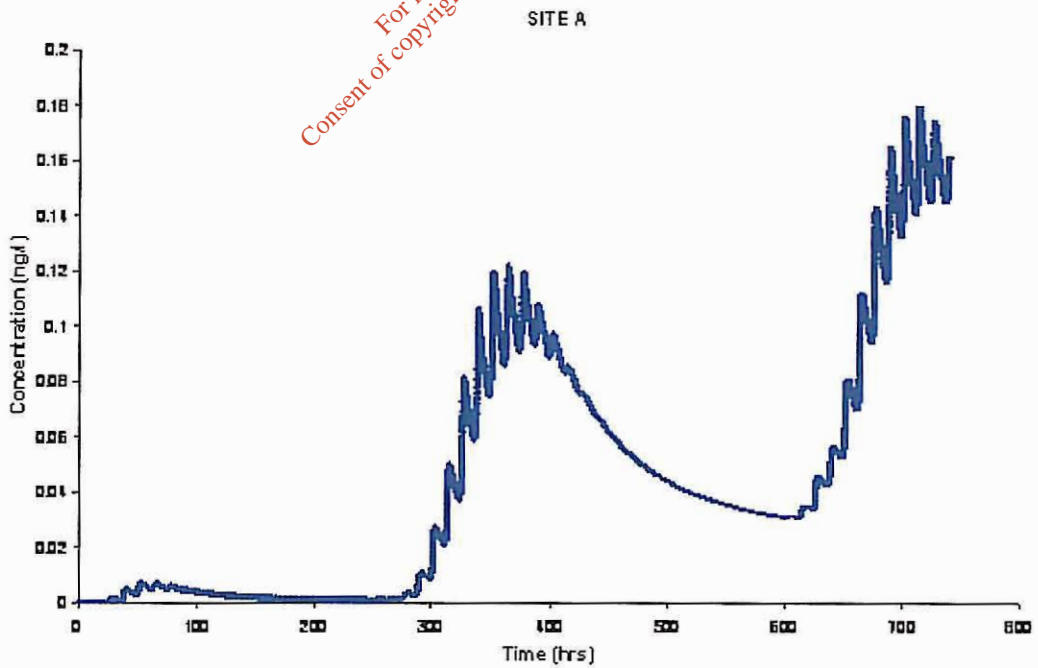


Figure 4.27: Variation of cadmium concentration at Point A

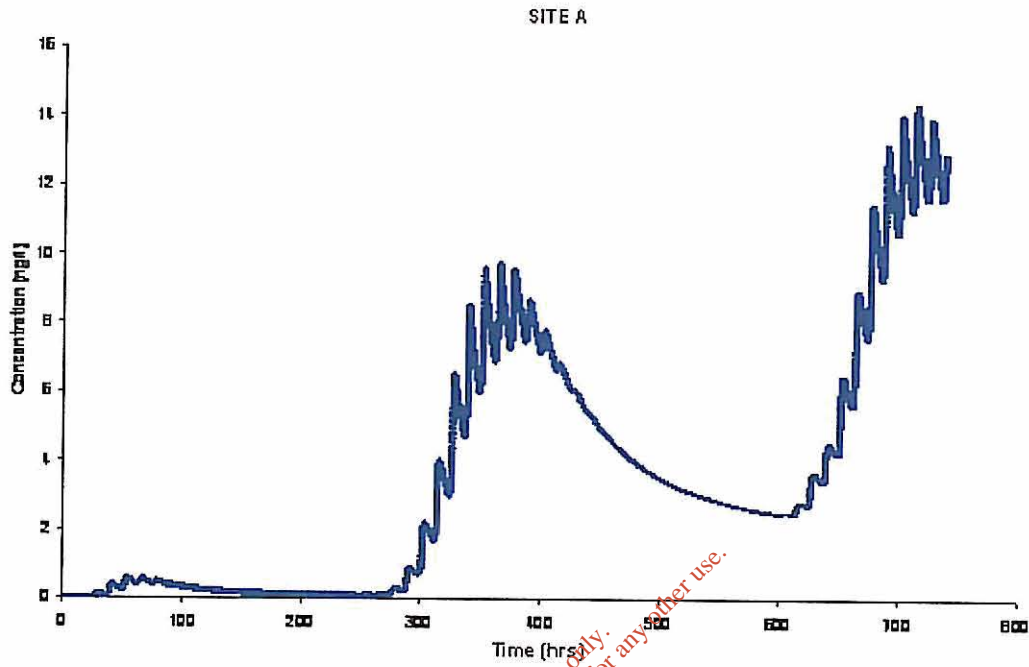


Figure 4.28: Variation of copper concentration at Point A

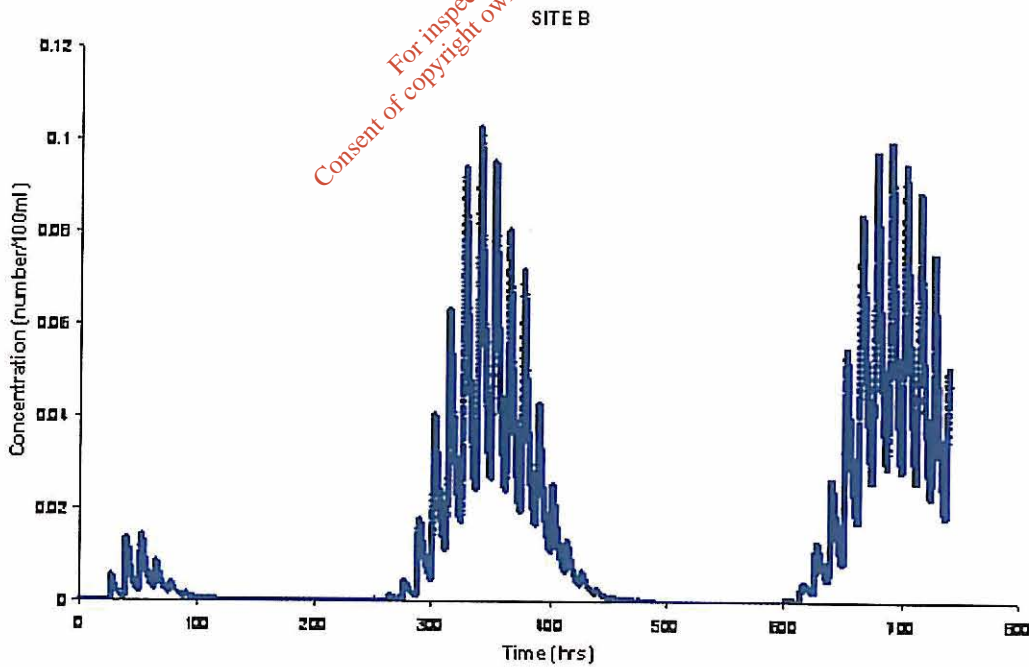


Figure 4.29: Variation of faecal coliform concentration at Point B

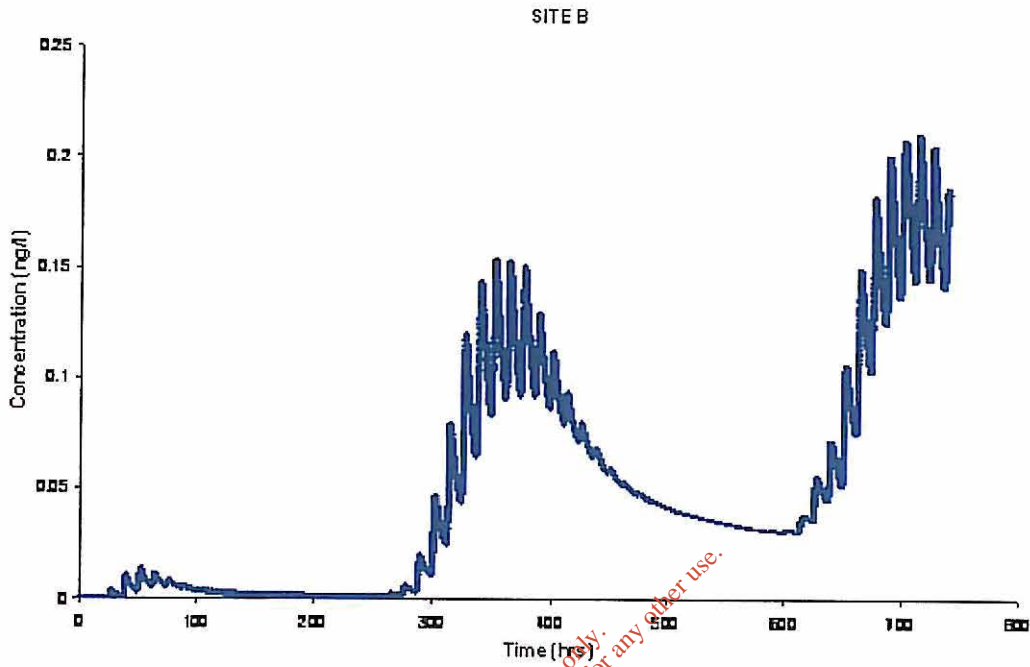


Figure 4.30: Variation of cadmium concentration at Point B

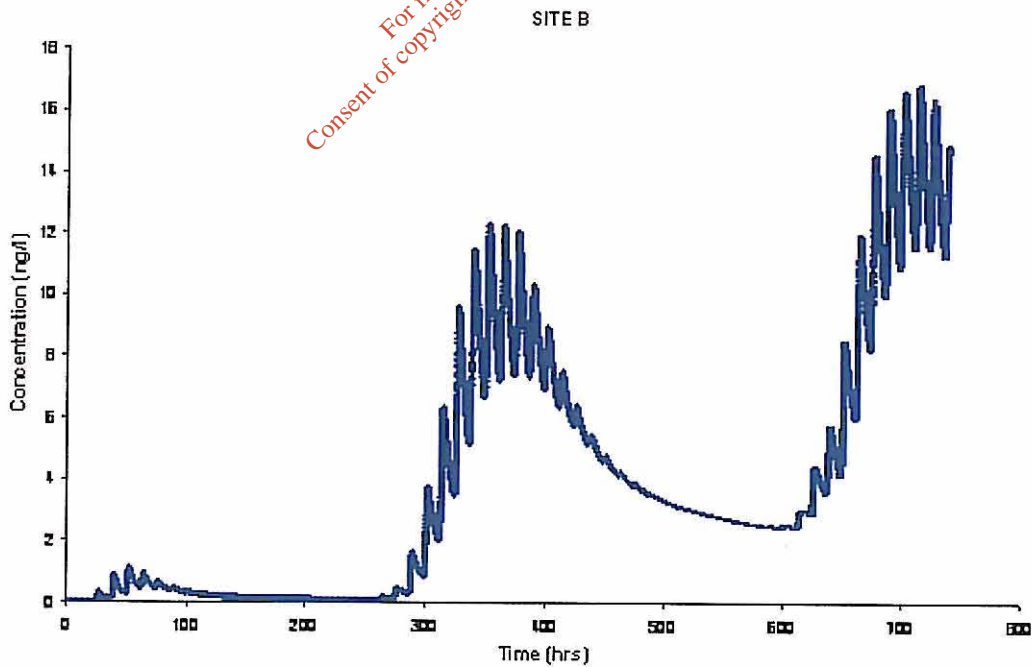


Figure 4.31: Variation of copper concentration at Point B

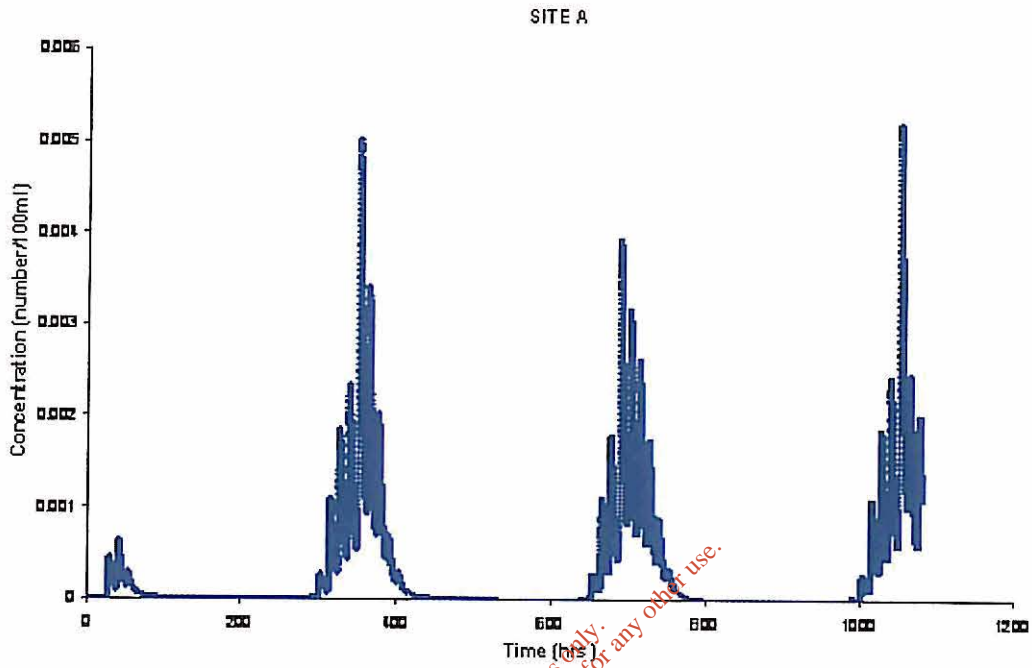


Figure 4.32: Variation of faecal coliform concentration at Point A

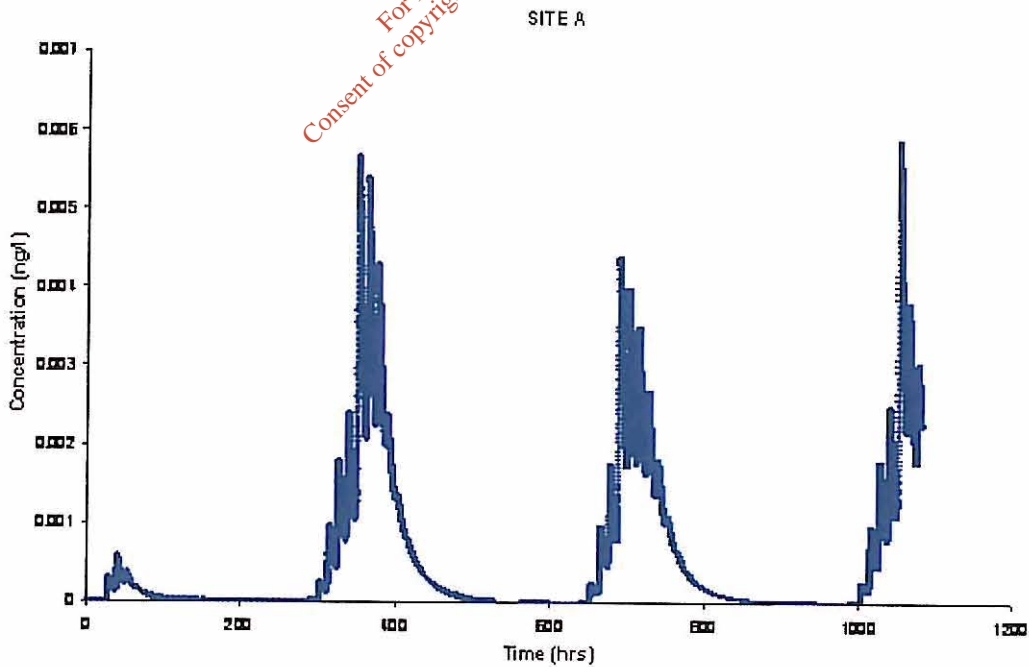


Figure 4.33: Variation of cadmium concentration at Point A



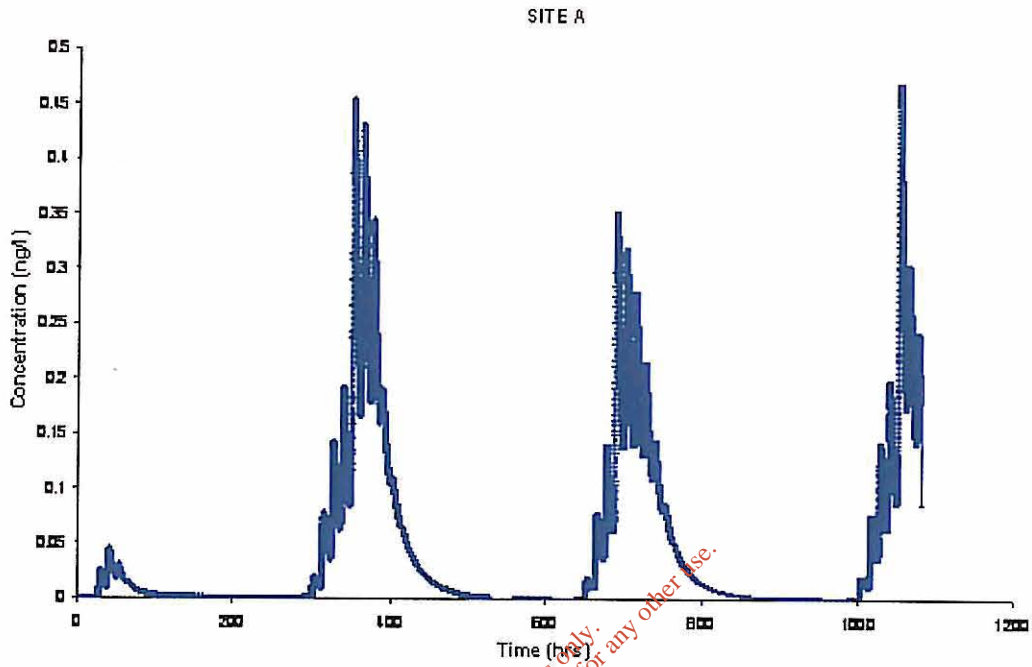


Figure 4.34: Variation of copper concentration at Point A

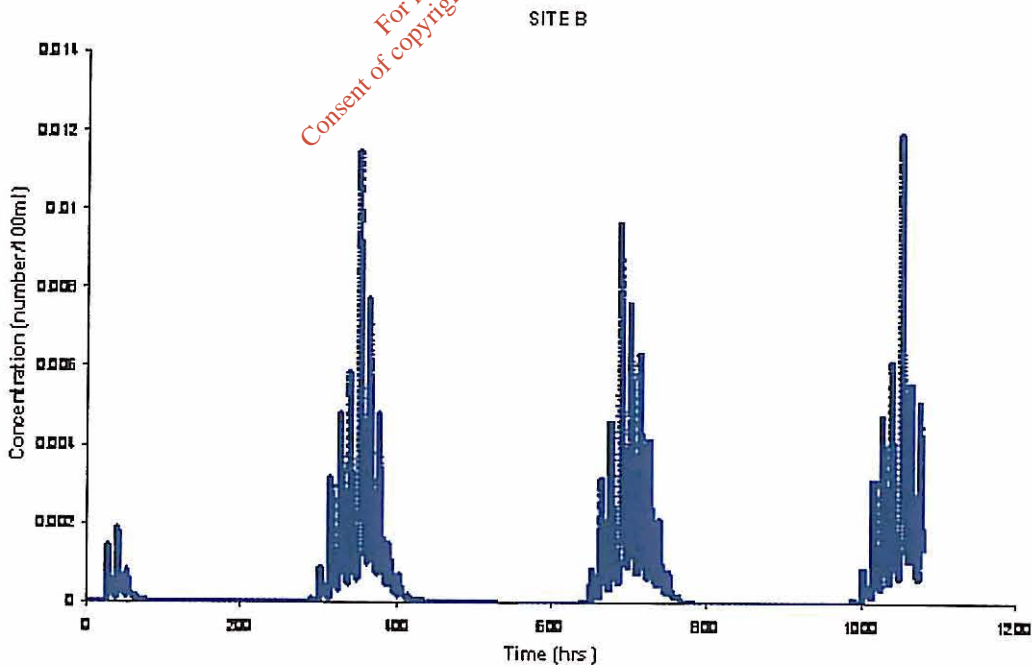


Figure 4.35: Variation of faecal coliform concentration at Point B

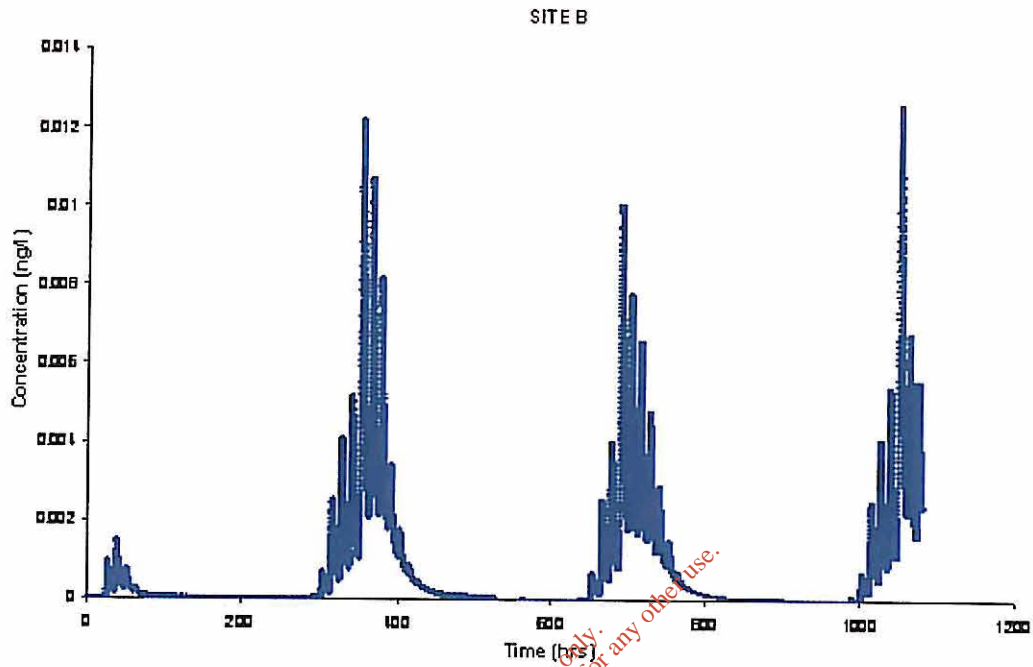


Figure 4.36: Variation of cadmium concentration at Point B

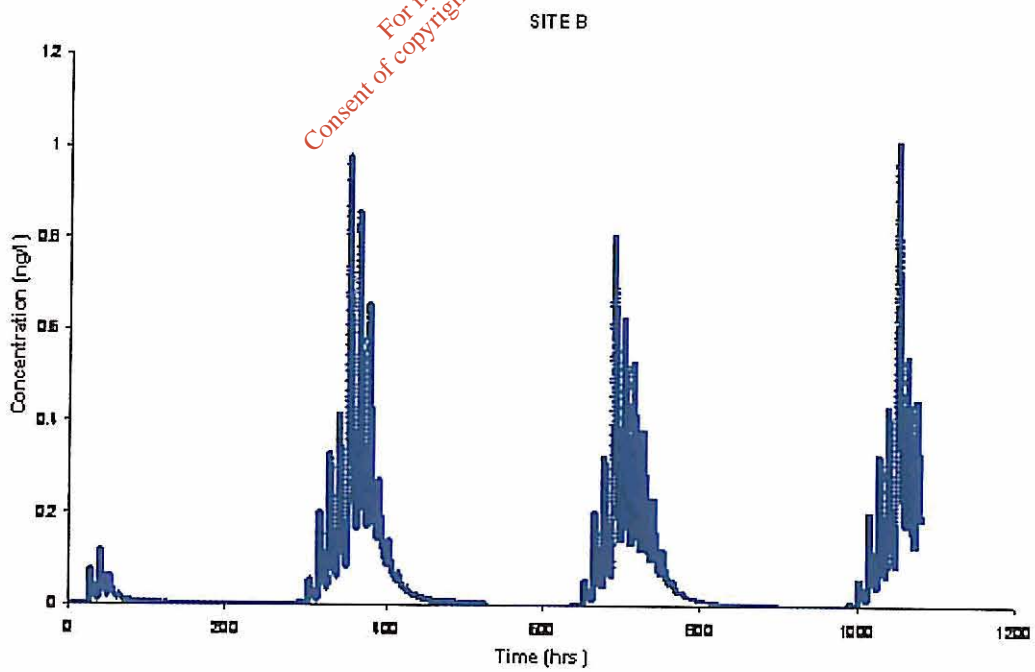


Figure 4.37: Variation of copper concentration at Point B

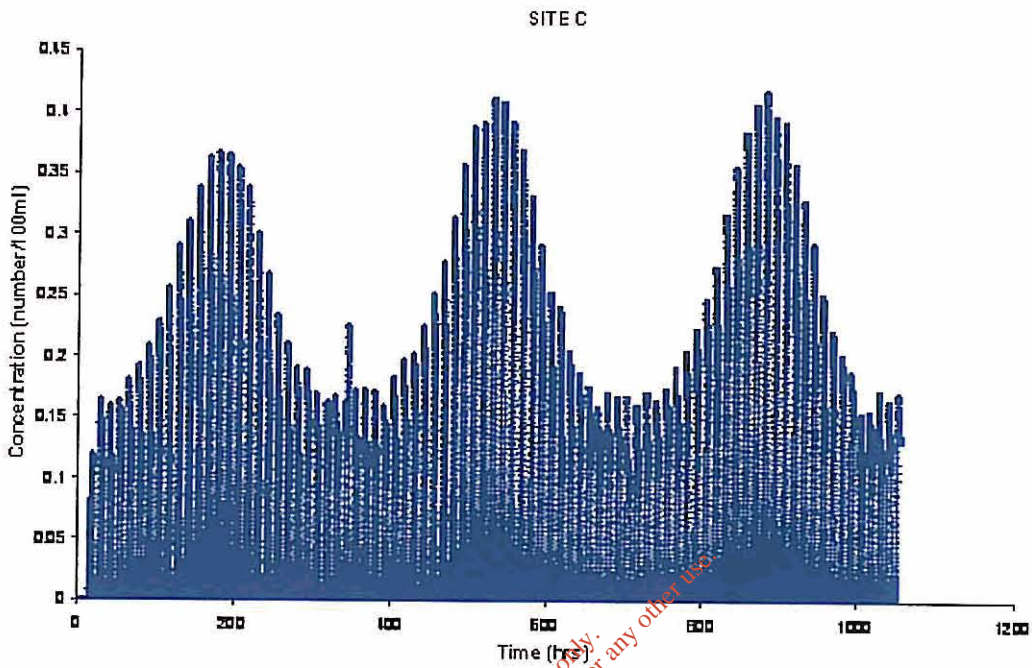


Figure 4.38: Variation of faecal coliform concentration at Point C

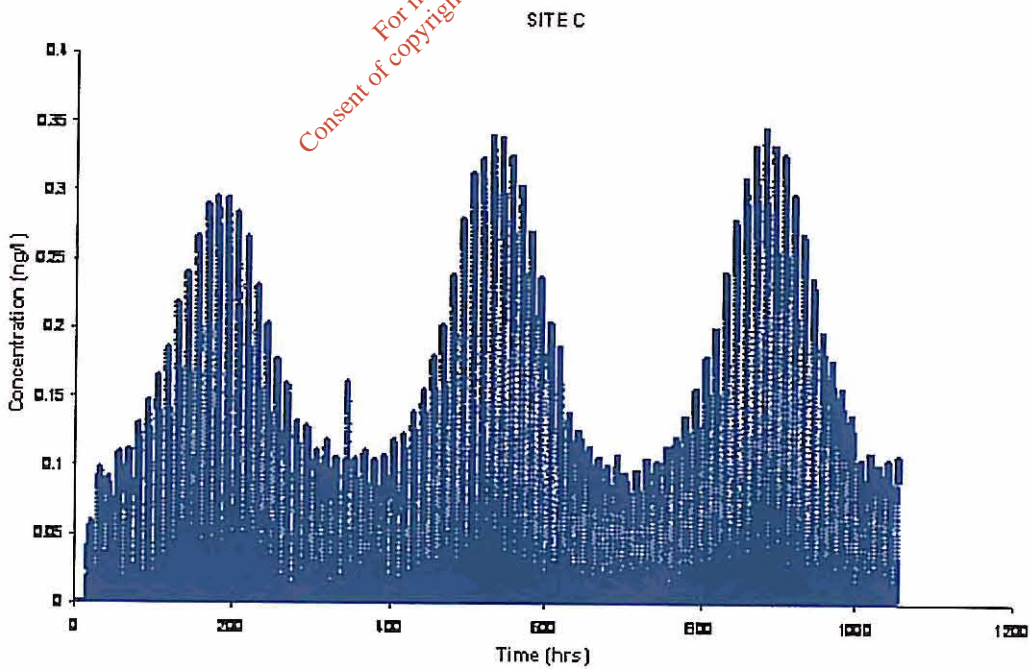


Figure 4.39: Variation of cadmium concentration at Point C

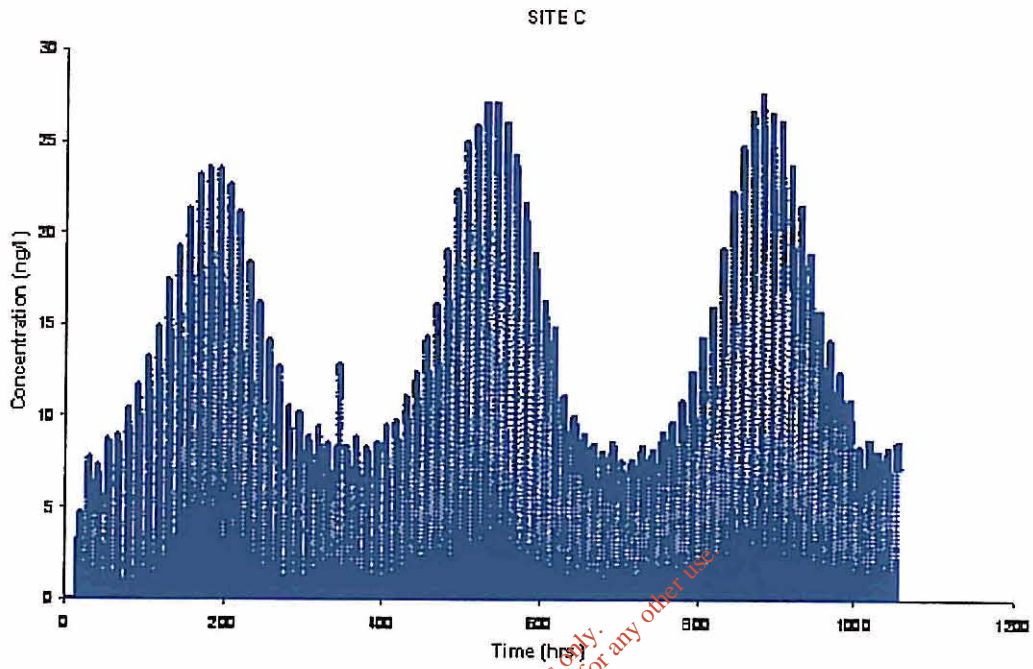


Figure 4.40: Variation of copper concentration at Point C

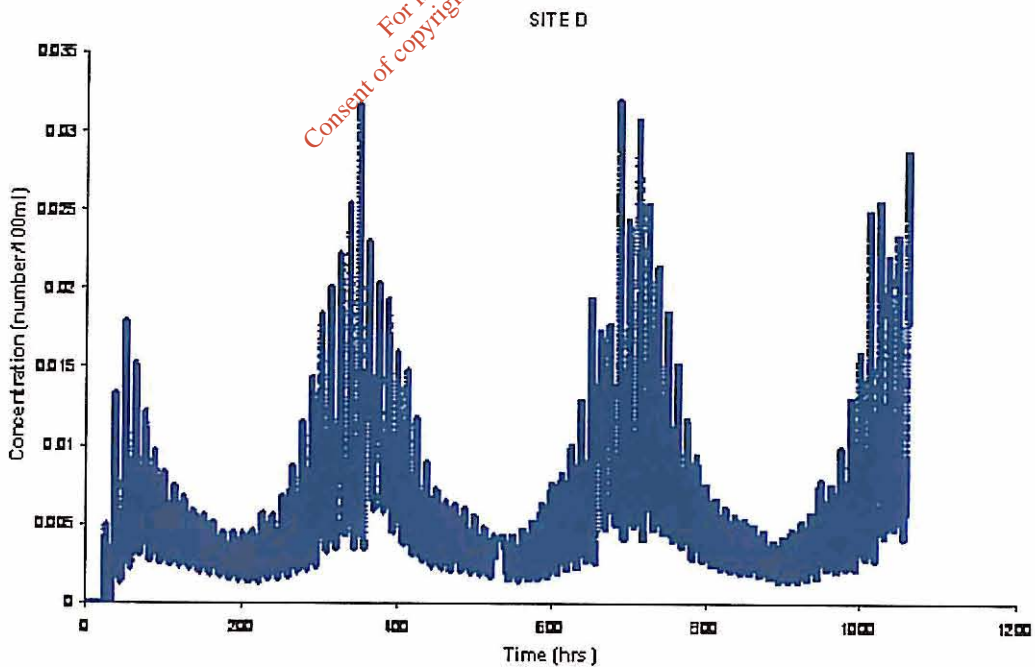


Figure 4.41: Variation of faecal coliform concentration at Point D

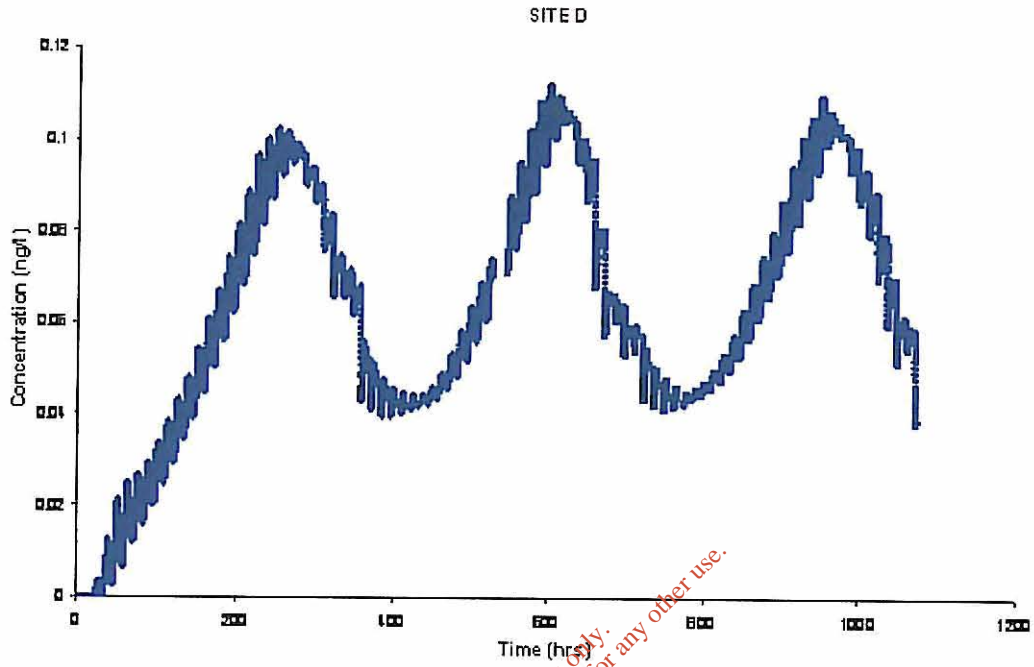


Figure 4.42: Variation of cadmium concentration at Point D

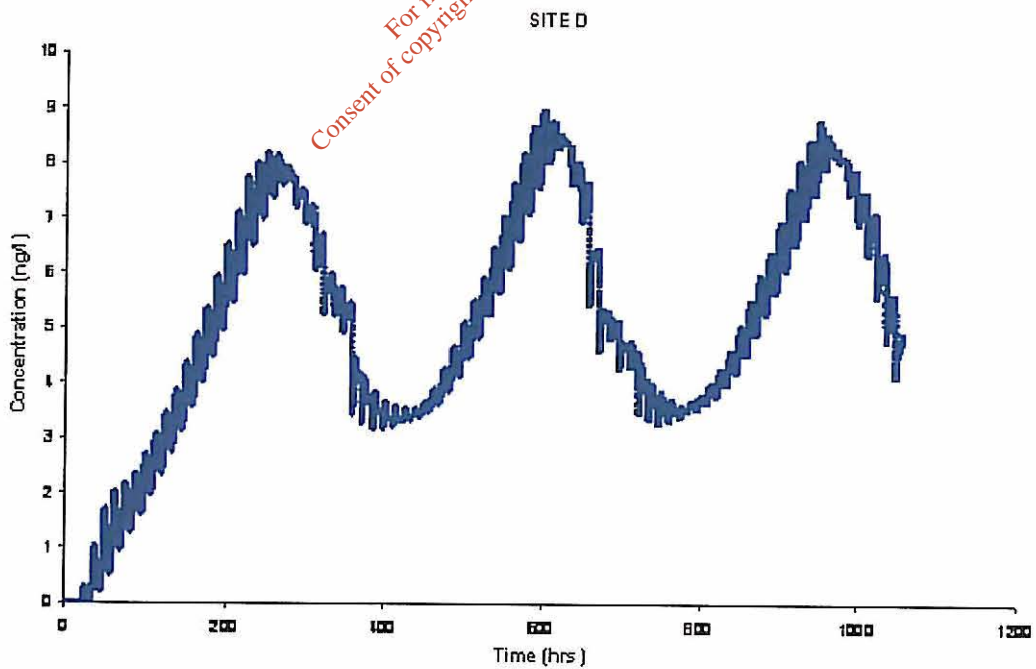


Figure 4.43: Variation of copper concentration at Point D



Figure 4.44 : Ammonia concentrations at mid-flood on a neap tide

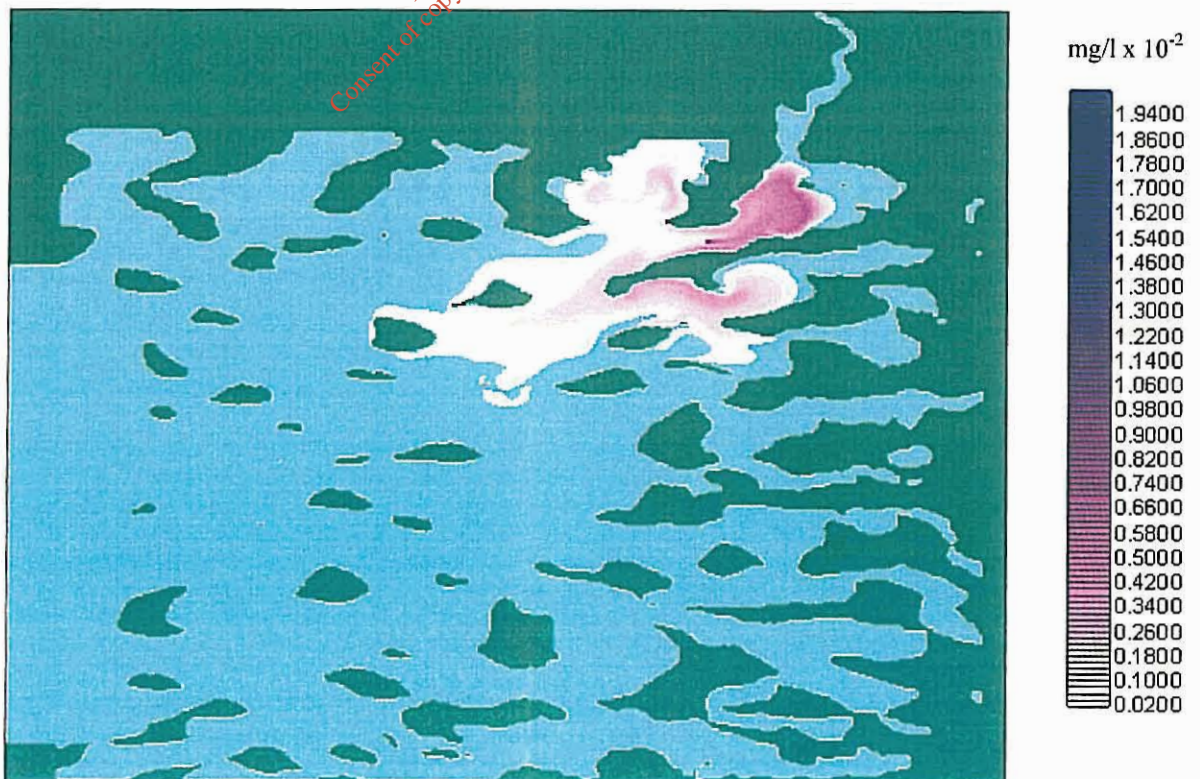


Figure 4.45 : Ammonia concentrations at high water on a neap tide



Figure 4.46 : Ammonia concentrations at mid-ebb on a neap tide

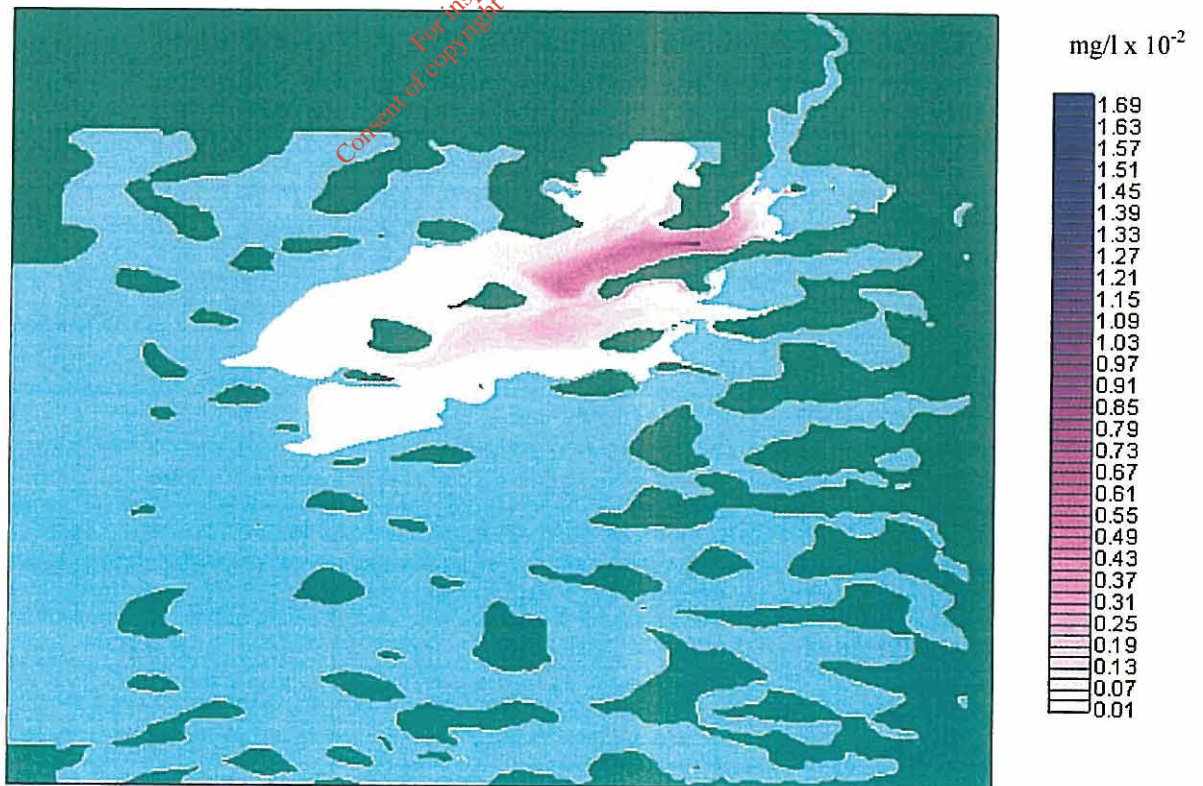


Figure 4.47 : Ammonia concentrations at low water on a neap tide

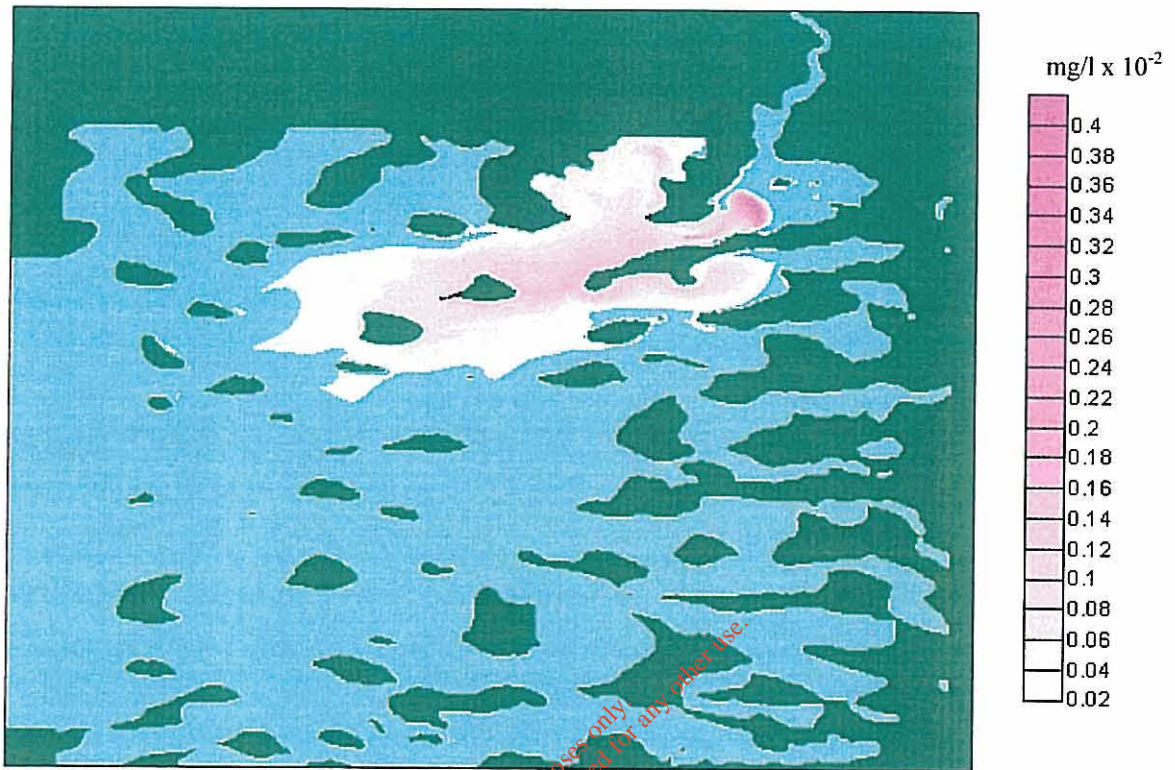


Figure 4.48 : Ammonia concentrations at mid-flood on a spring tide



Figure 4.49 : Ammonia concentrations at high water on a spring tide





Figure 4.50 : Ammonia concentrations at mid-ebb on a spring tide

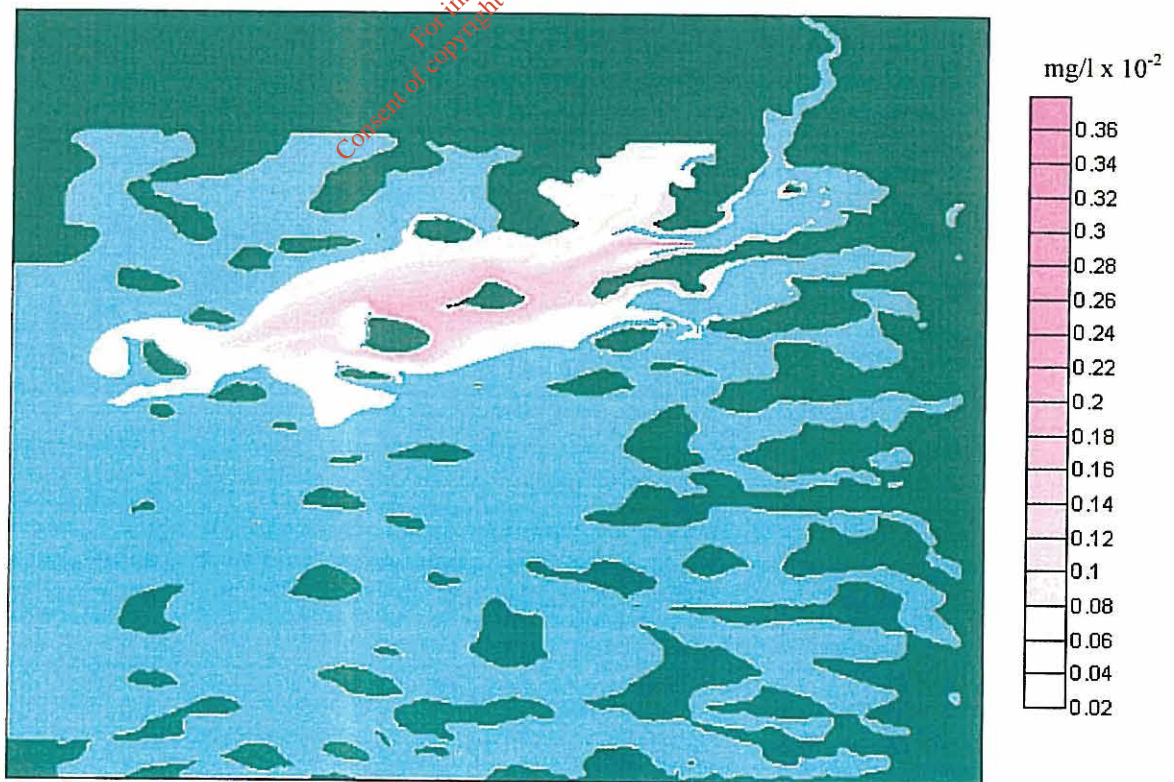


Figure 4.51 : Ammonia concentrations at low water on a spring tide

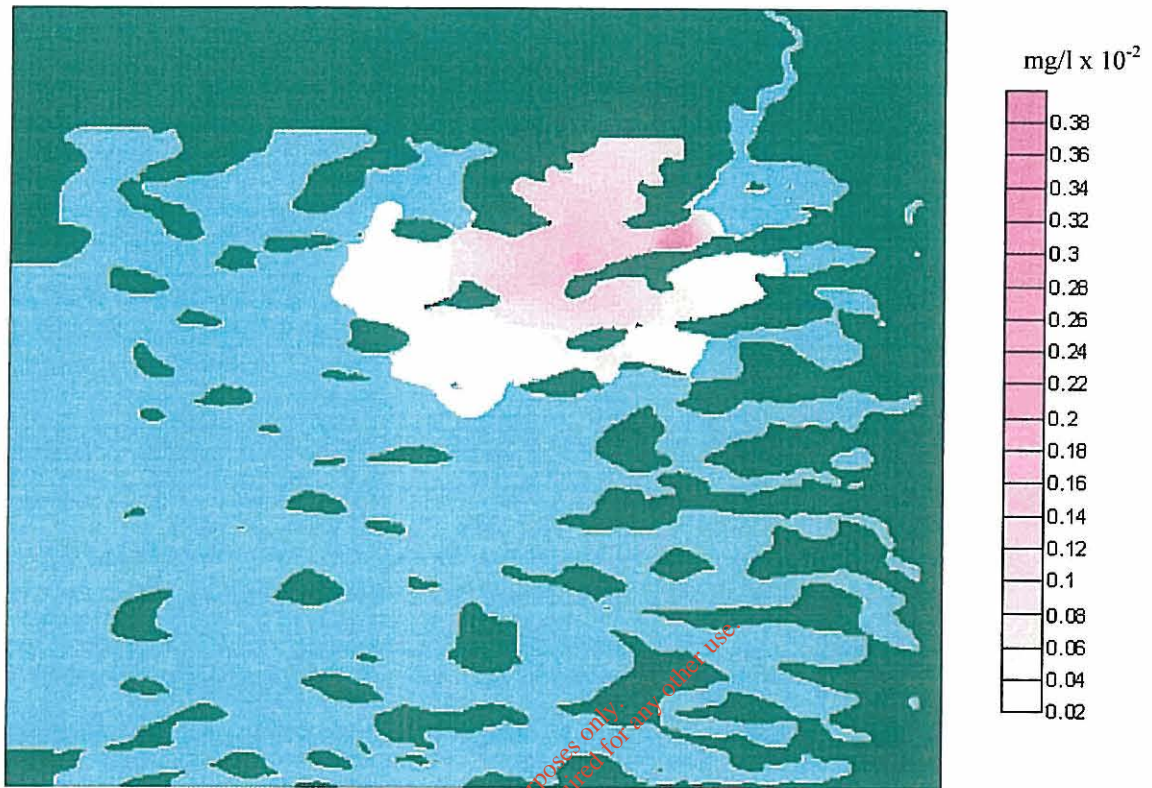


Figure 4.52 : Ammonia concentrations at mid-flood on a neap tide

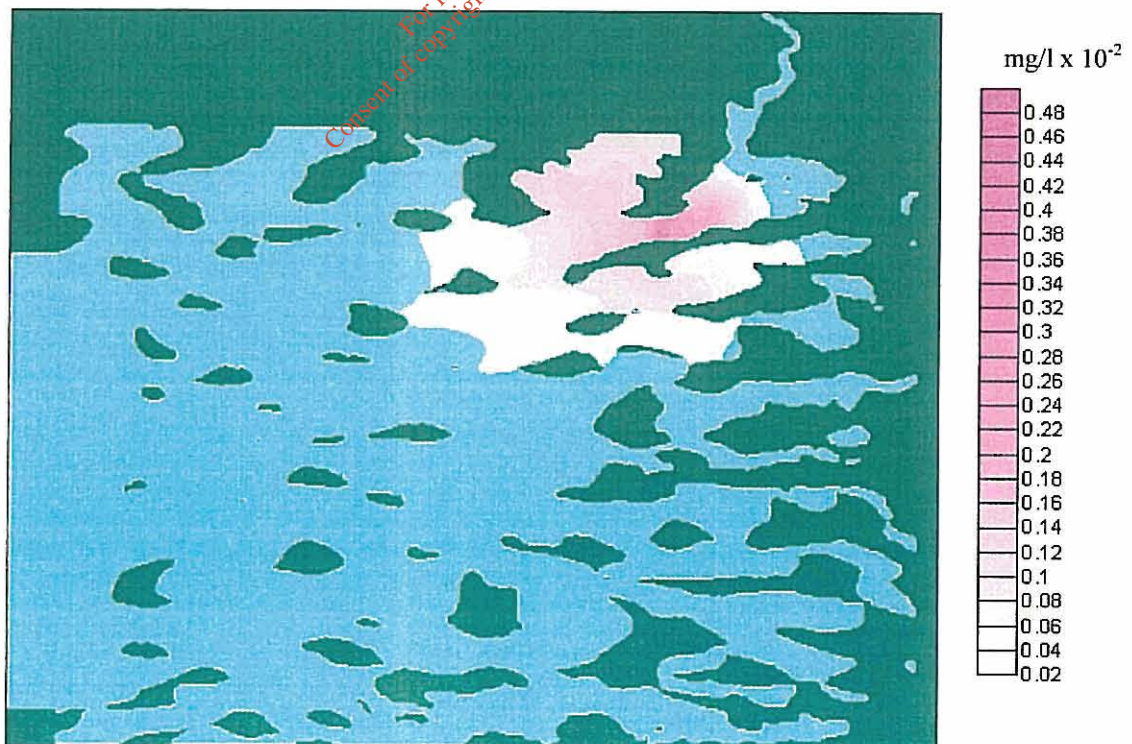


Figure 4.53 : Ammonia concentrations at high water on a neap tide

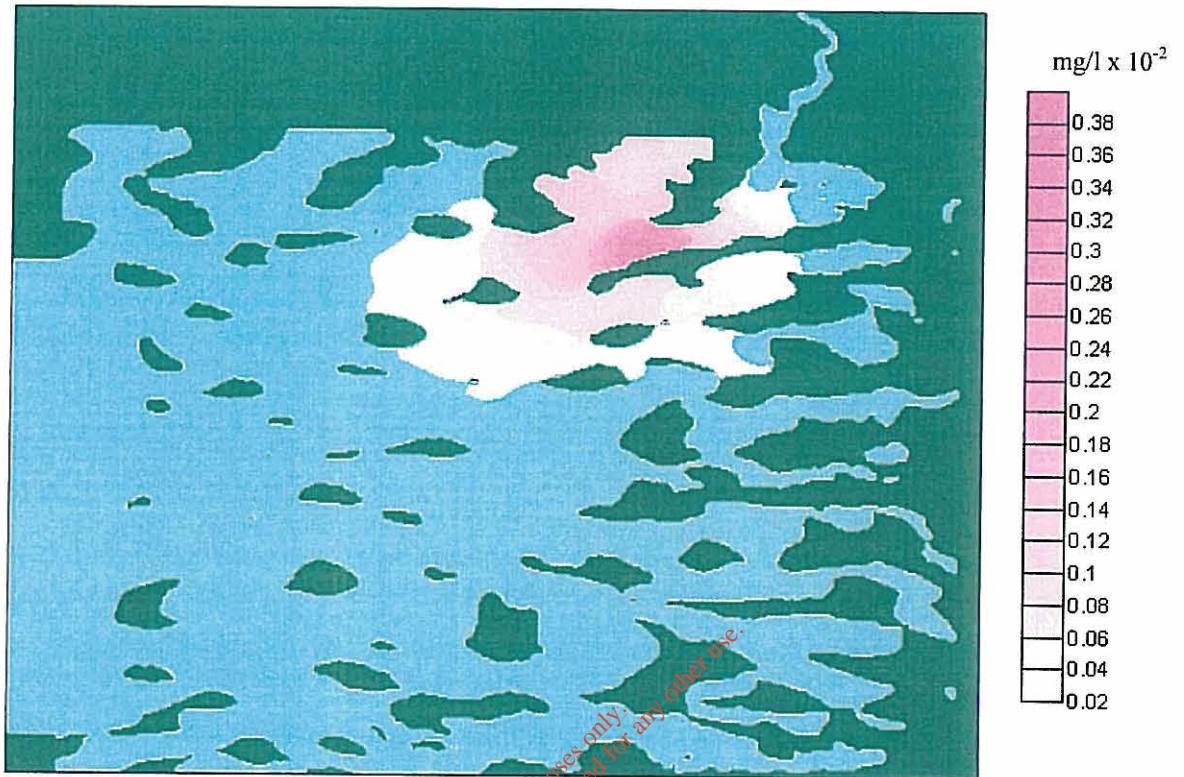


Figure 4.54 : Ammonia concentrations at mid-ebb on a neap tide

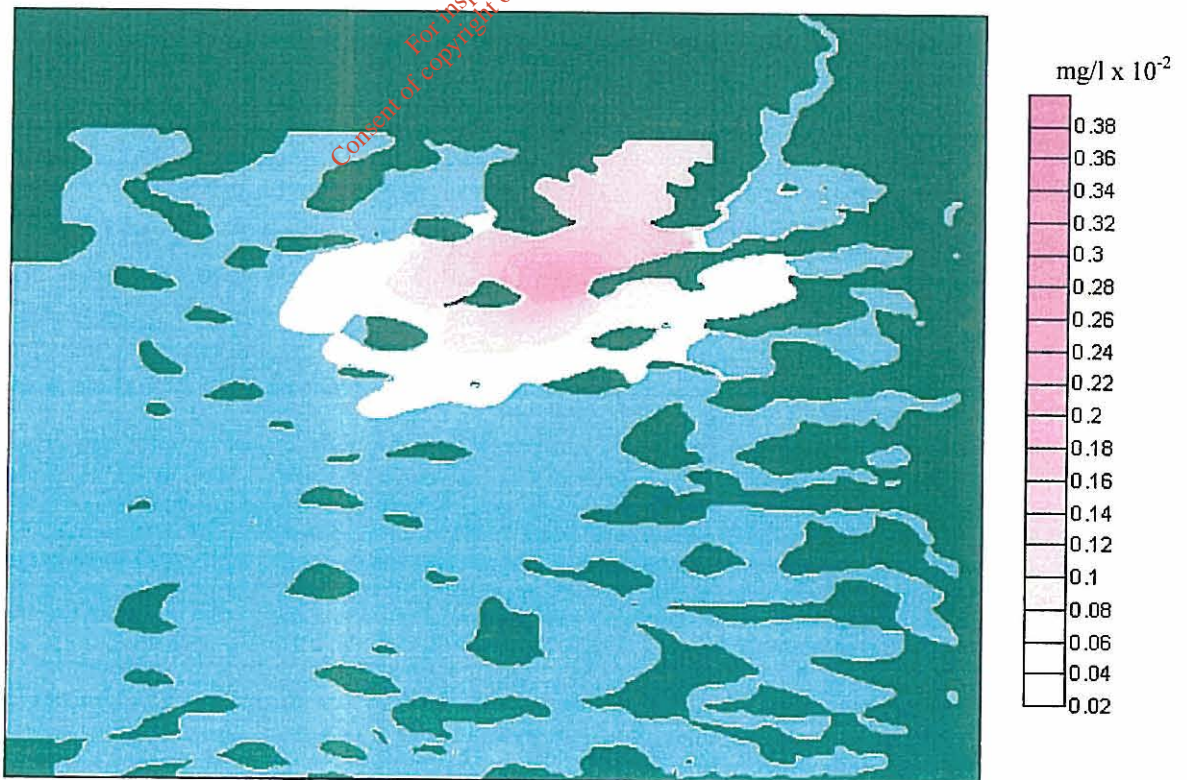


Figure 4.55 : Ammonia concentrations at low water on a neap tide

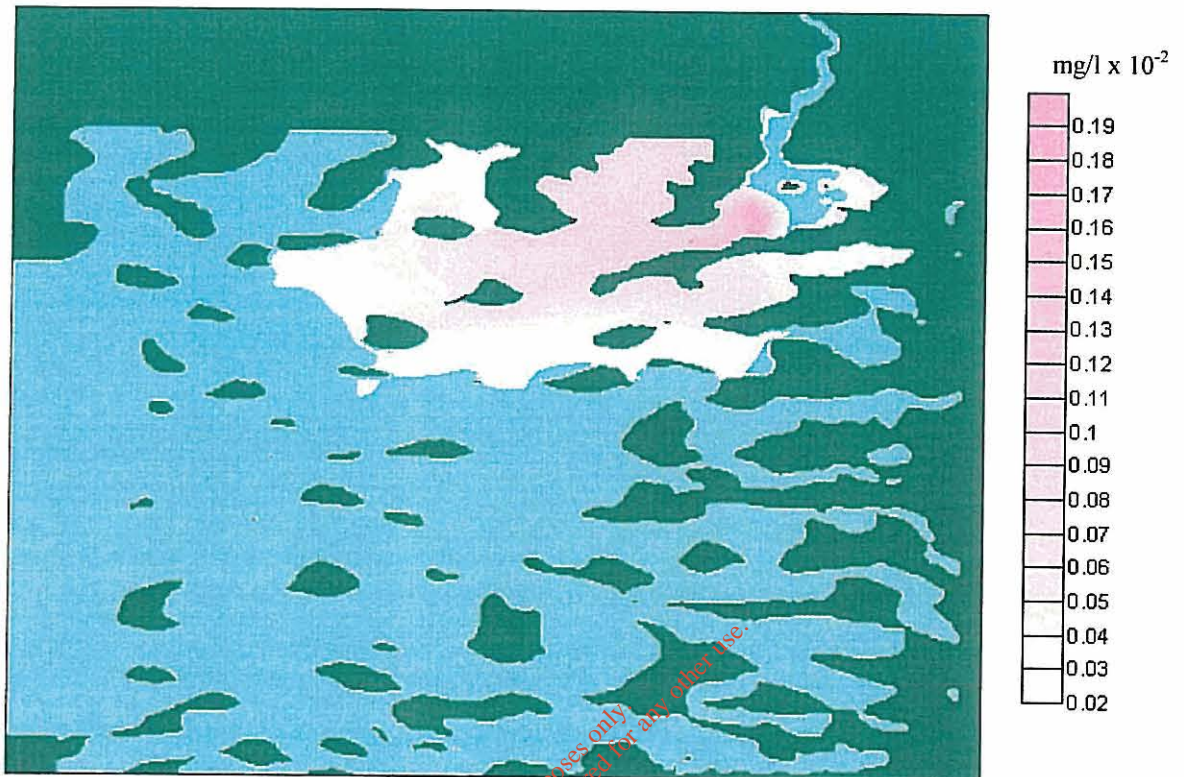


Figure 4.56 : Ammonia concentrations at mid-flood on a spring tide

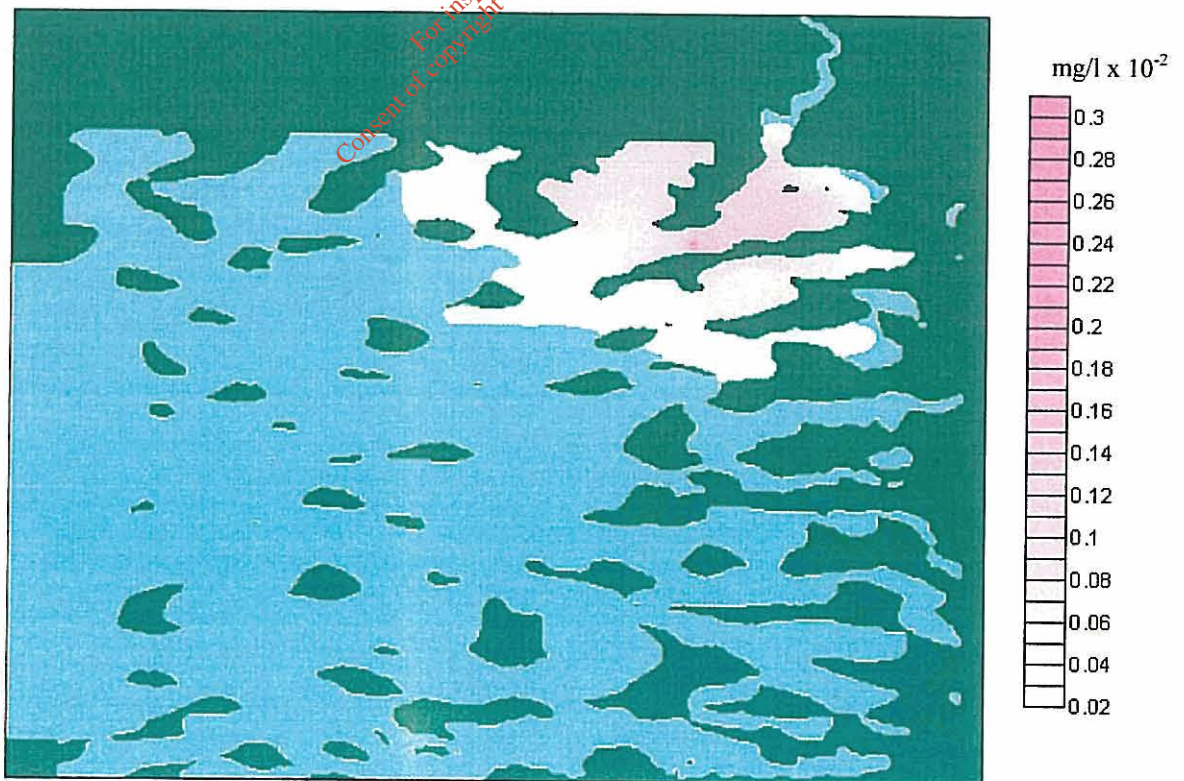


Figure 4.57 : Ammonia concentrations at high water on a spring tide



Figure 4.58 : Ammonia concentrations at mid-ebb on a spring tide

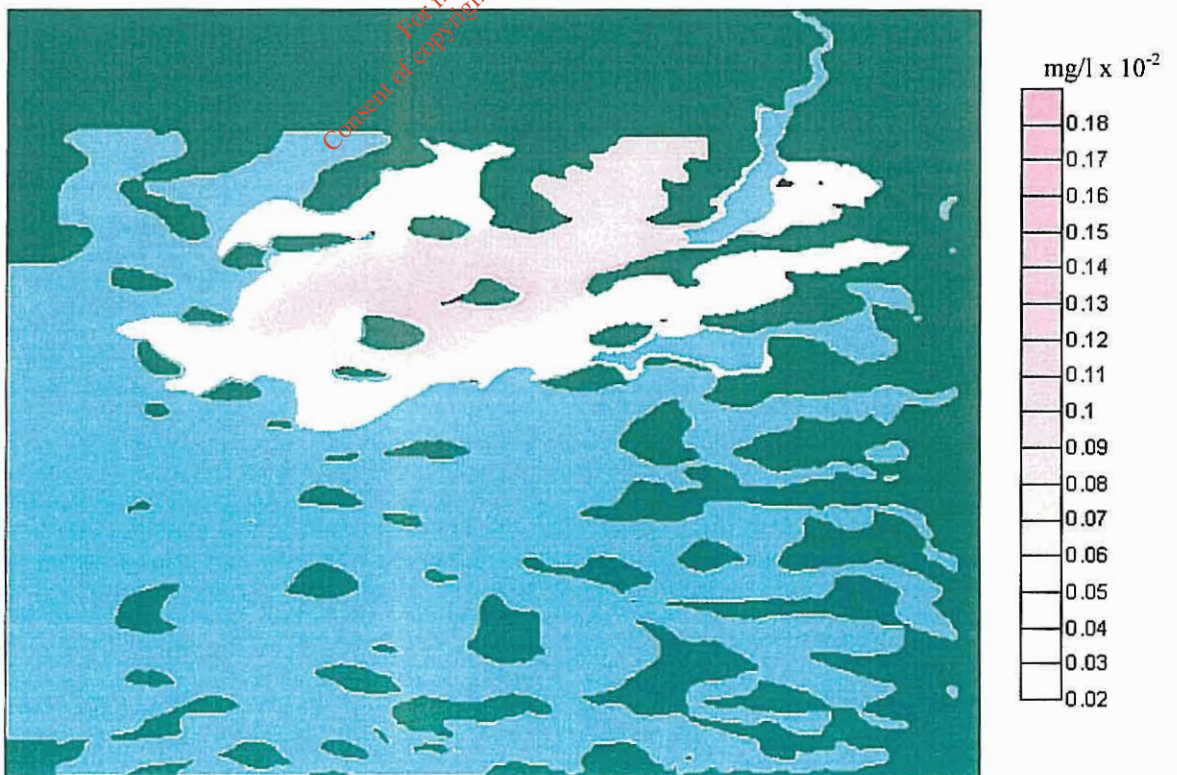


Figure 4.59 : Ammonia concentrations at low water on a spring tide

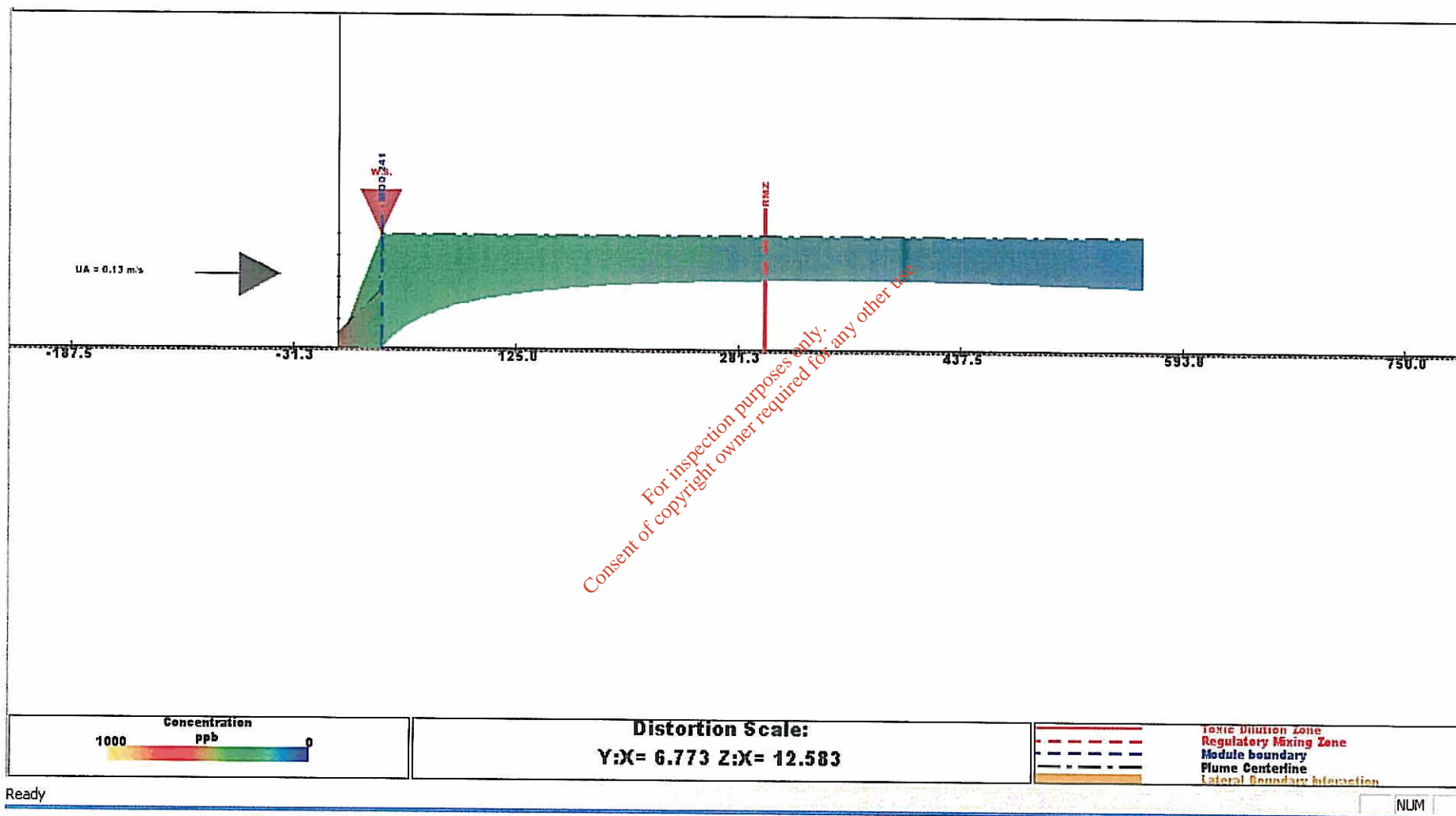


Figure 4.60 : Side view of predicted plume at mid-ebb on a neap tide

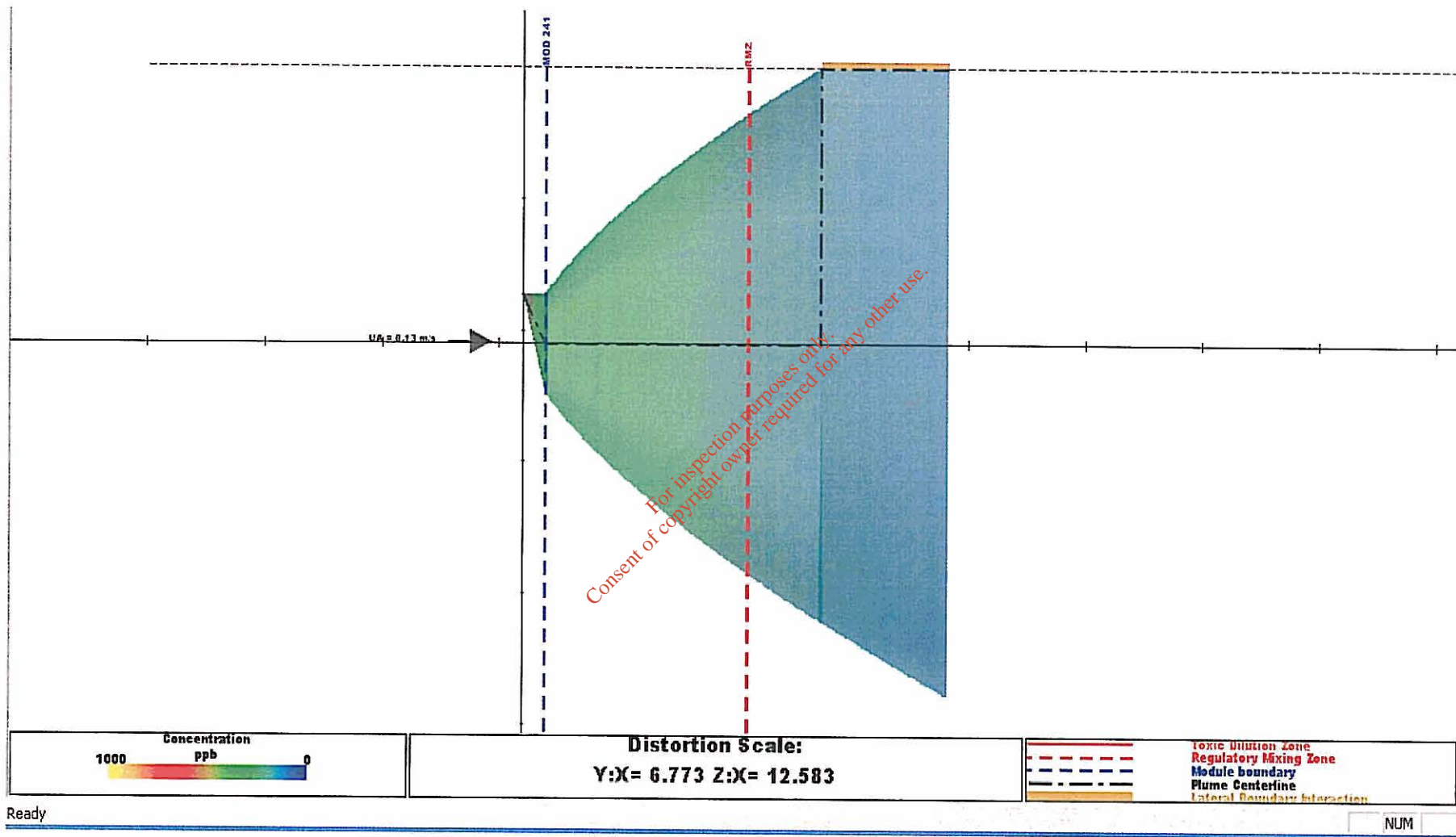
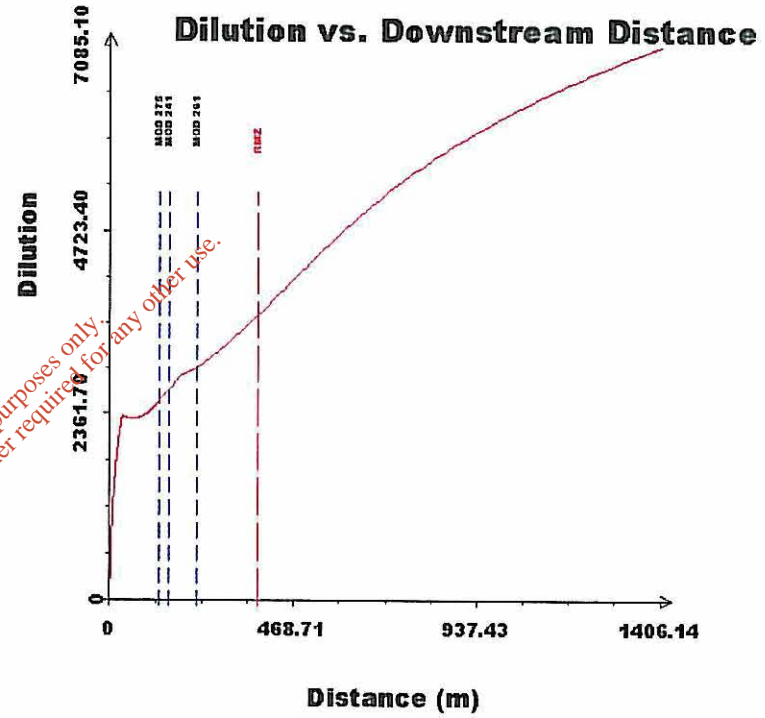
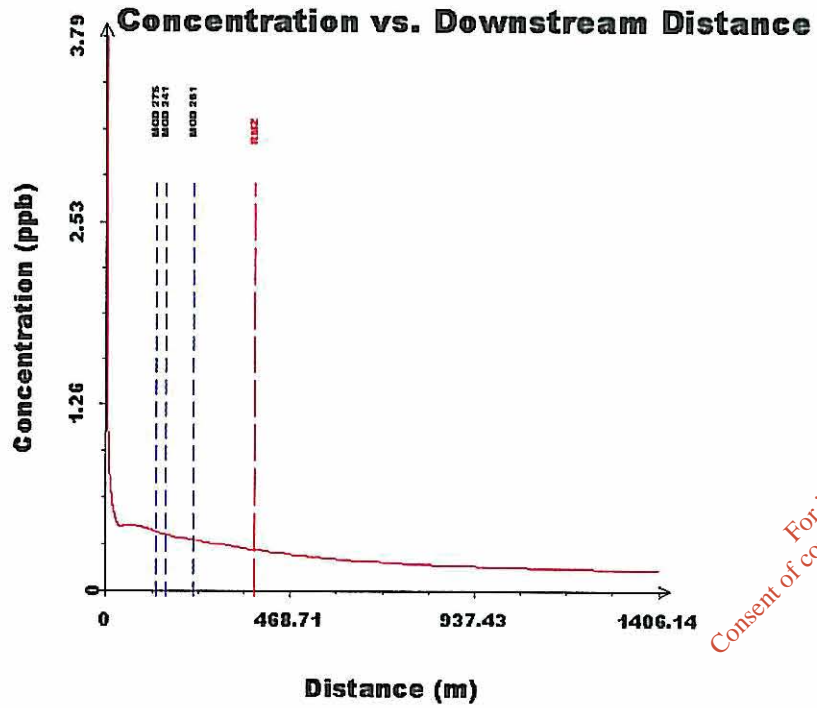


Figure 4.61 : Plan view of predicted plume at mid-ebb on a neap tide



For inspection purposes only  
Consent of copyright owner required for any other use.

Figure 4.65 : Plots of Cadmium concentration and dilution versus downstream distance at mid-ebb on a spring tide