

GROUNDWATER PROTECTION SCHEME
BOG OF THE RING, COUNTY DUBLIN
MAP 2 SUBSOILS MAP

SUBSOILS LEGEND

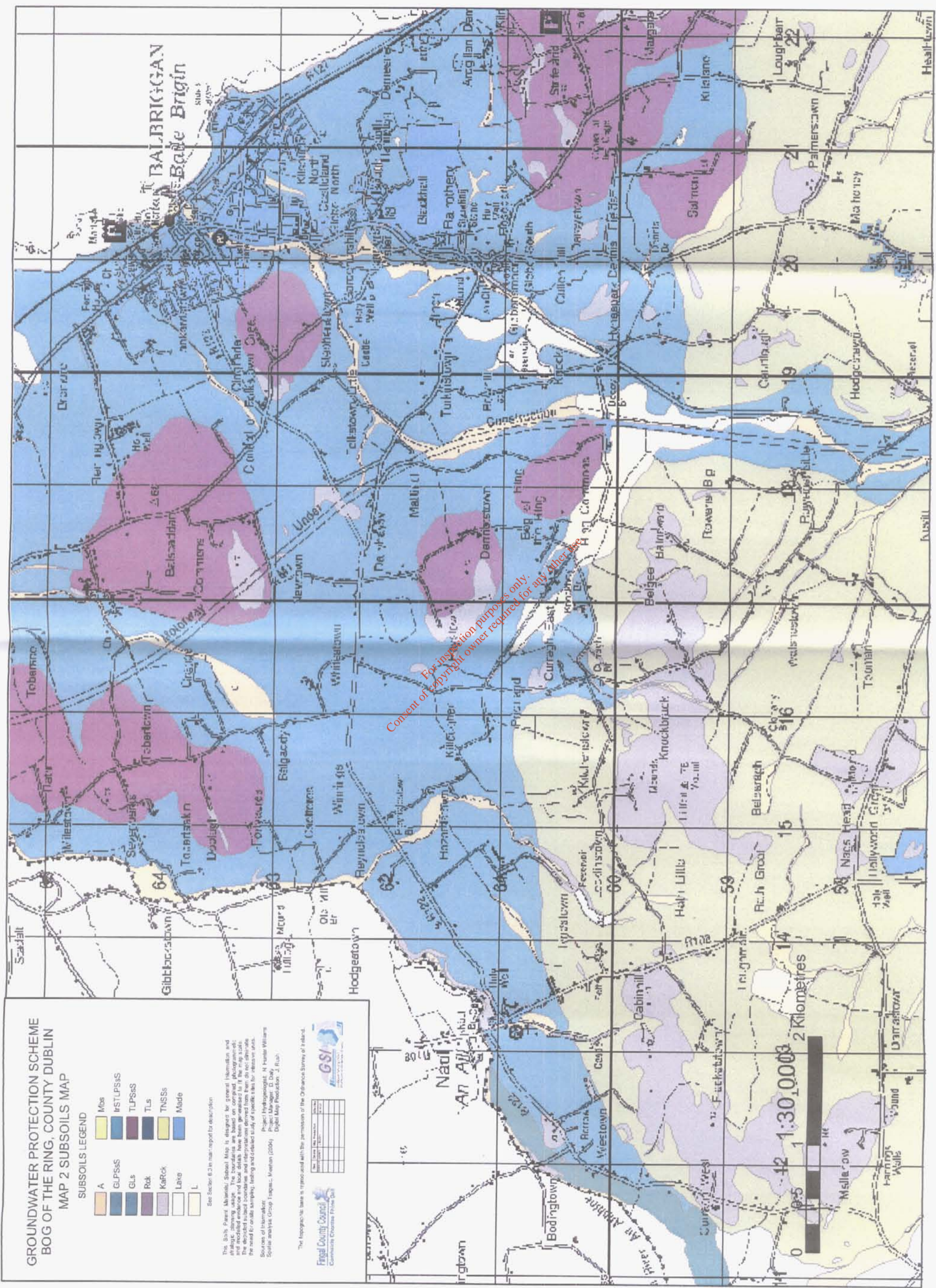
- A
- GLPSS
- GLS
- Rok
- KaRok
- Lave
- L
- Mbs
- ISTLPSS
- TLPSS
- TL
- TNSS
- Made

See Section 6.2 in main report for description

This Soil Parent Material/ Subsoil Map is designed for general information and strategic planning usage. The boundaries are based on compiled, photographic and recorded evidence and local details have been generalised to fit the map scale. The detailed subsoil boundaries and interpretations derived from them, do not constitute the need for on-site sampling, testing and detailed study of specific sites for protective uses.

Sources of Information:
Soil analysis Group Teagasc, Kesh (2004)
Project Hydrologist: N. Hunter Williams
Project Manager: D. Daly
Digital Map Production: J. Rubin

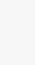
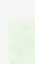
The geographic base is aligned with the permission of the Ordnance Survey of Ireland.



For inspection purposes only.
Consent of copyright owner required for any other use.

**GROUNDWATER PROTECTION SCHEME
BOG OF THE RING, COUNTY DUBLIN**

MAP 3 AQUIFER MAP

-  Karst
-  Generally moderately productive
-  Moderately productive only in local zones
-  Generally unproductive except in local zones
-  Generally unproductive
-  Faults
-  Locally Important Aquifers
-  Poor Aquifers

This Aquifer Map is designed for general information and strategic planning usage. The boundaries are based on the available evidence and local details have been generalized to fit the map scale. Evaluation of specific sites and circumstances will require further and more detailed assessments and will frequently require site investigations.

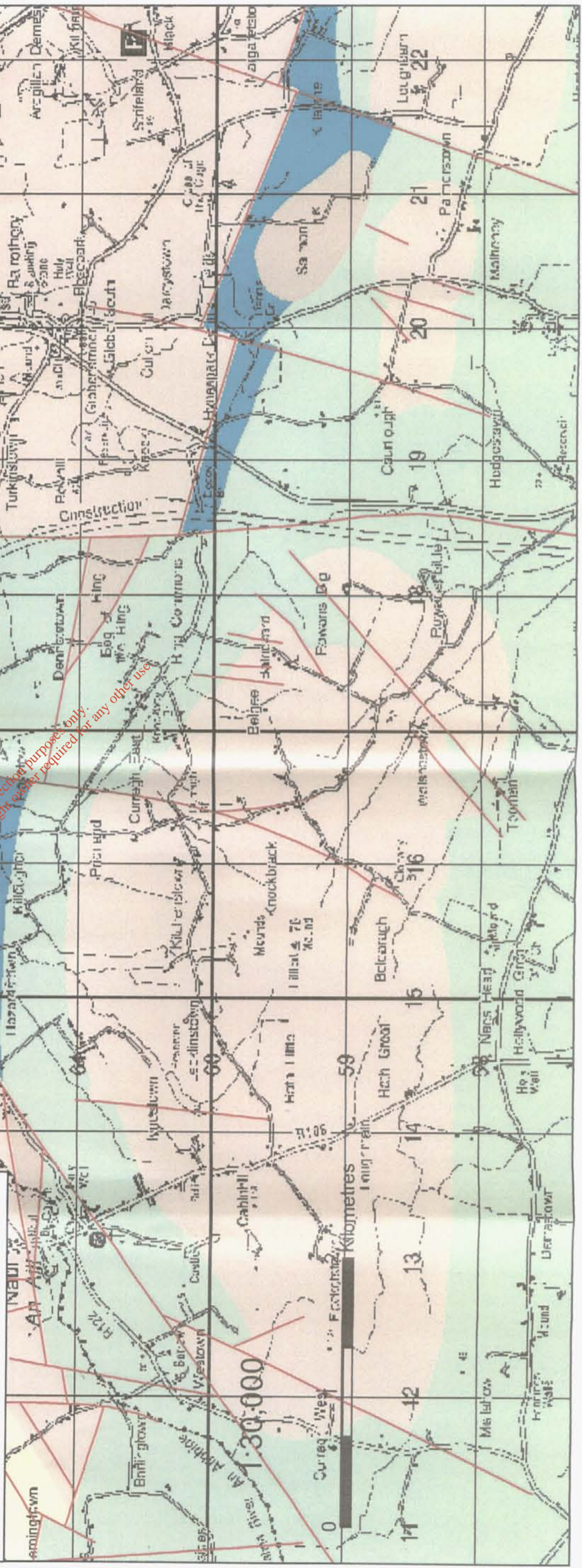
Sources of Information
 GSI 1:100,000 Bedrock Series Sheet 13
 Project Hydrogeologist: N. Hunt & Williams
 Project Manager: D. Doherty
 Draft National Aquifer Map compiled by
 GSI Groundwater Section (2003)

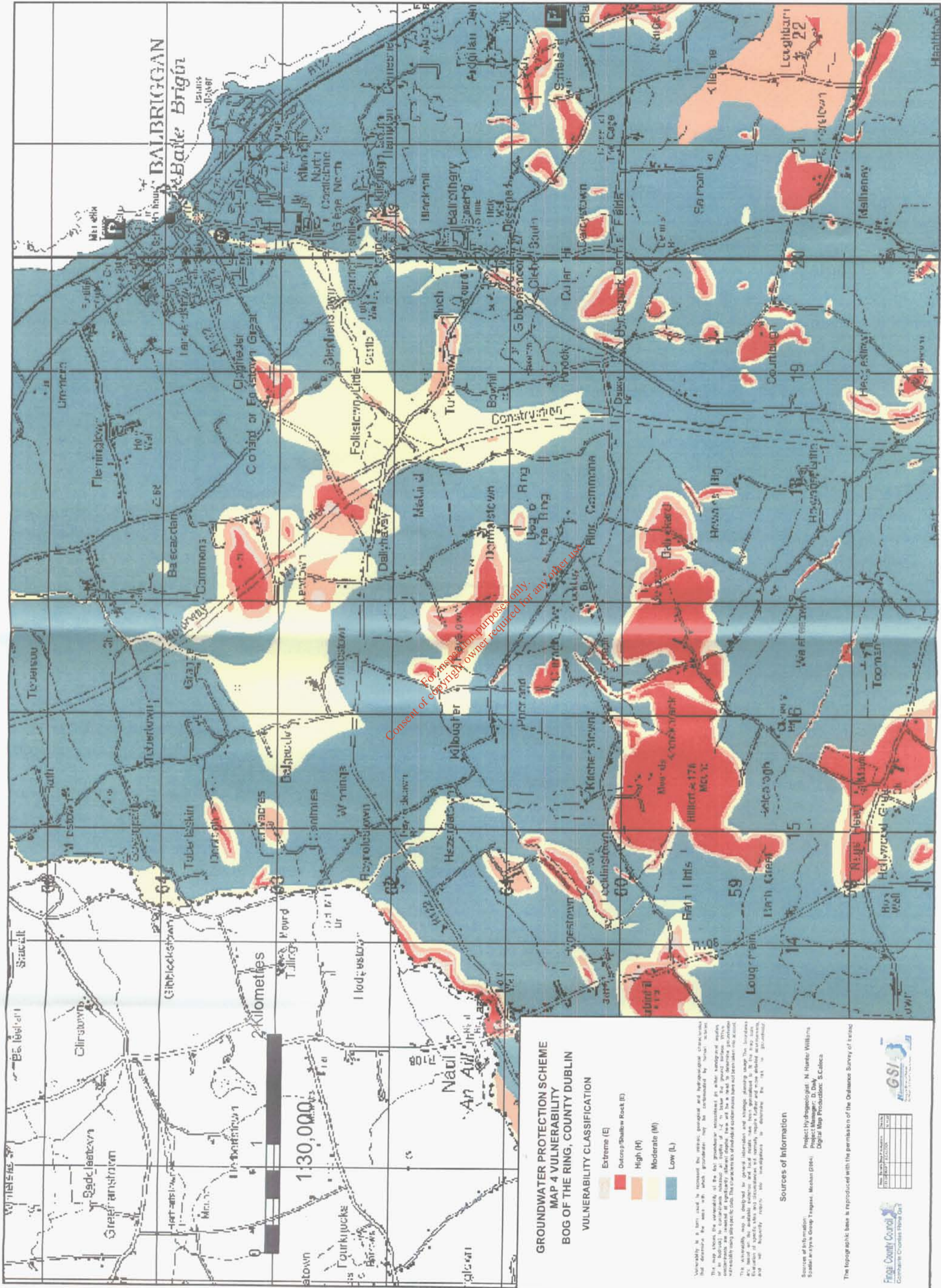
The topographic base is reproduced with the permission of the Ordnance Survey of Ireland

Fingal County Council
 Contraceptive Choices Phone Gap

Map Series	Map Production	Checked
1:100,000	13/03/03	OK
1:50,000	13/03/03	OK

GSI
 Geological Survey of Ireland





For information purpose only.
 Consent of copyright owner required for any other use.

GROUNDWATER PROTECTION SCHEME
MAP 4 VULNERABILITY
BOG OF THE RING, COUNTY DUBLIN

VULNERABILITY CLASSIFICATION

- Extreme (E)
- Outcrop/Shallow Rock (E)
- High (H)
- Moderate (M)
- Low (L)

Vulnerability is a term used to represent the ability of an aquifer and hydrogeological characteristics to determine the extent to which groundwater may be contaminated by direct recharge. This map shows the vulnerability of the bog groundwaters associated with the bog groundwaters in the Bog of the Ring, County Dublin. The map is based on the available geological and hydrogeological data and is intended to provide a general overview of the vulnerability of the bog groundwaters. The map is not intended to be used as a basis for detailed site-specific investigations. The map is based on the available geological and hydrogeological data and is intended to provide a general overview of the vulnerability of the bog groundwaters. The map is not intended to be used as a basis for detailed site-specific investigations.

Sources of Information

Sources of Information:
 Spatial Analysis Group, Teagasc, Moore Park (2006)
 Project Hydrogeologist: N. Hunter-Williams
 Project Manager: D. Daly
 Digital Map Production: S. Calcutt

The topographic base is reproduced with the permission of the Ordnance Survey of Ireland.



Map Sheet	Scale	Projection



