

W0141-02

Environmental Protection Agency
Po Box 3000
Johnstown Castle Estate
County Wexford

Environmental
Protection Agency
24 JAN 2008

Date: 23 JAN 2008

Re: Inert Landfill at Beaumont Quarry, County Cork.

Dear Sir/Madam,

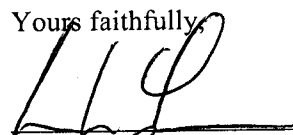
An order has been made by An Bord Pleanála determining the above-mentioned case. A copy of the order is enclosed.

In accordance with section 146(3) of the Planning and Development Act, 2000 the Board will make available for inspection and purchase at its offices the documents relating to the decision within 3 working days following its decision. In addition, the Board will also make available the Inspector's Report and the Board Direction on the decision on its website (www.pleanala.ie). This information is normally made available on the list of decided cases on the website on the Wednesday following the week in which the decision is made.

If you have any queries in relation to the matter please contact the undersigned officer of the Board.

Please quote the above-mentioned An Bord Pleanála reference number in any correspondence or telephone contact with the Board.

Yours faithfully,



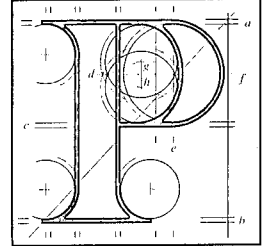
Luke Ryan
Executive Officer
Direct Line: 01-8737210

For inspection purposes only
Consent of copyright owner required for any other use

Encl:

el16.ltr

An Bord Pleanála

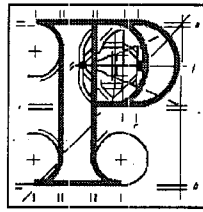


64 Sráid Maoilbhríde,
Baile Átha Cliath 1.

Tel: (01) 858 8100
LoCall: 1890 275 175
Fax: (01) 872 2684
Web: <http://www.pleanala.ie>
email: bord@pleanala.ie

64 Marlborough Street,
Dublin 1.

An Bord Pleanála



PLANNING AND DEVELOPMENT ACTS 2000 TO 2006

Cork City Council

APPLICATION by Cork City Council for approval under section 175 of the Planning and Development Acts, 2000 to 2006 in accordance with plans and particulars, including an environmental impact statement, lodged with the Board on the 18th July, 2007.

PROPOSED DEVELOPMENT: Development to a fill disused quarry with inert waste and restore same for public use at Beaumont Quarry, Ballinlough and Ballintemple, County Cork.

DECISION

APPROVE subject to conditions above proposed development based on the reasons and considerations set out under

Reasons and Considerations

It is considered that, subject to the conditions detailed below, and to the filling of the quarry with inert waste being carried out in accordance with a waste licence from the Environmental Protection Agency, the proposed development, would be acceptable in terms of traffic safety and convenience, would not be prejudicial to public health, would not cause undue injury to the amenities of property in the area and would be in accordance with the proper planning and sustainable development of the area, and would not result in significant adverse effects on the environment.

CONDITIONS

1. In addition to the dust monitoring set out in table 2.3 on page 41 of volume 2 of the environmental impact statement, dust monitoring shall also be carried out at the boundary of the site closest to Saint Gerald Majella's Terrace for the duration of the filling operation. The results of the monitoring shall be made available for inspection by the public at the offices of Cork City Council in City Hall.

Reason: In the interests of residential amenity

2. Continuous monitoring of vehicular and pedestrian movements into the site shall be carried out using close circuit television equipment during the 'construction' period when inert waste is being placed in the quarry.