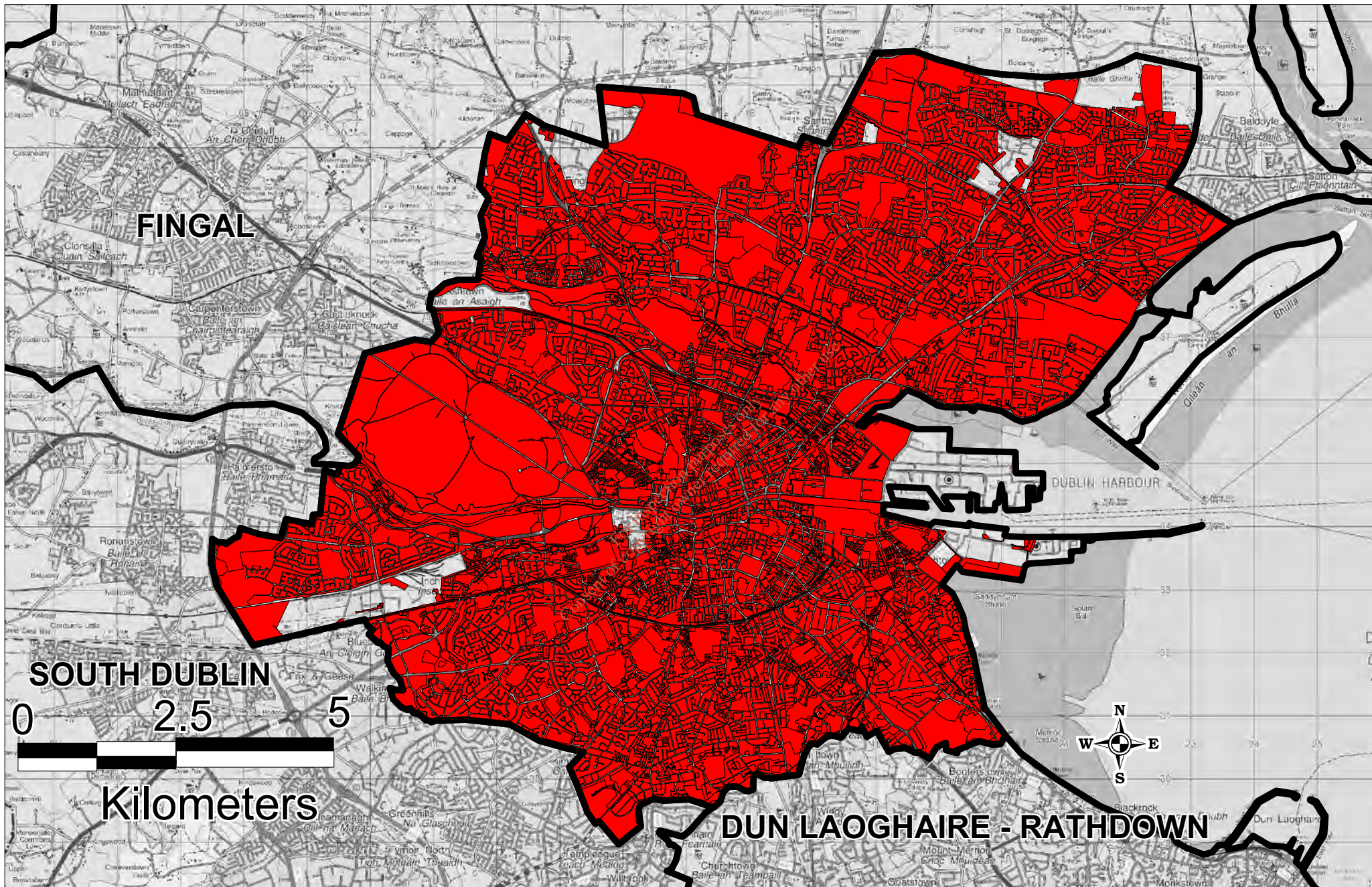
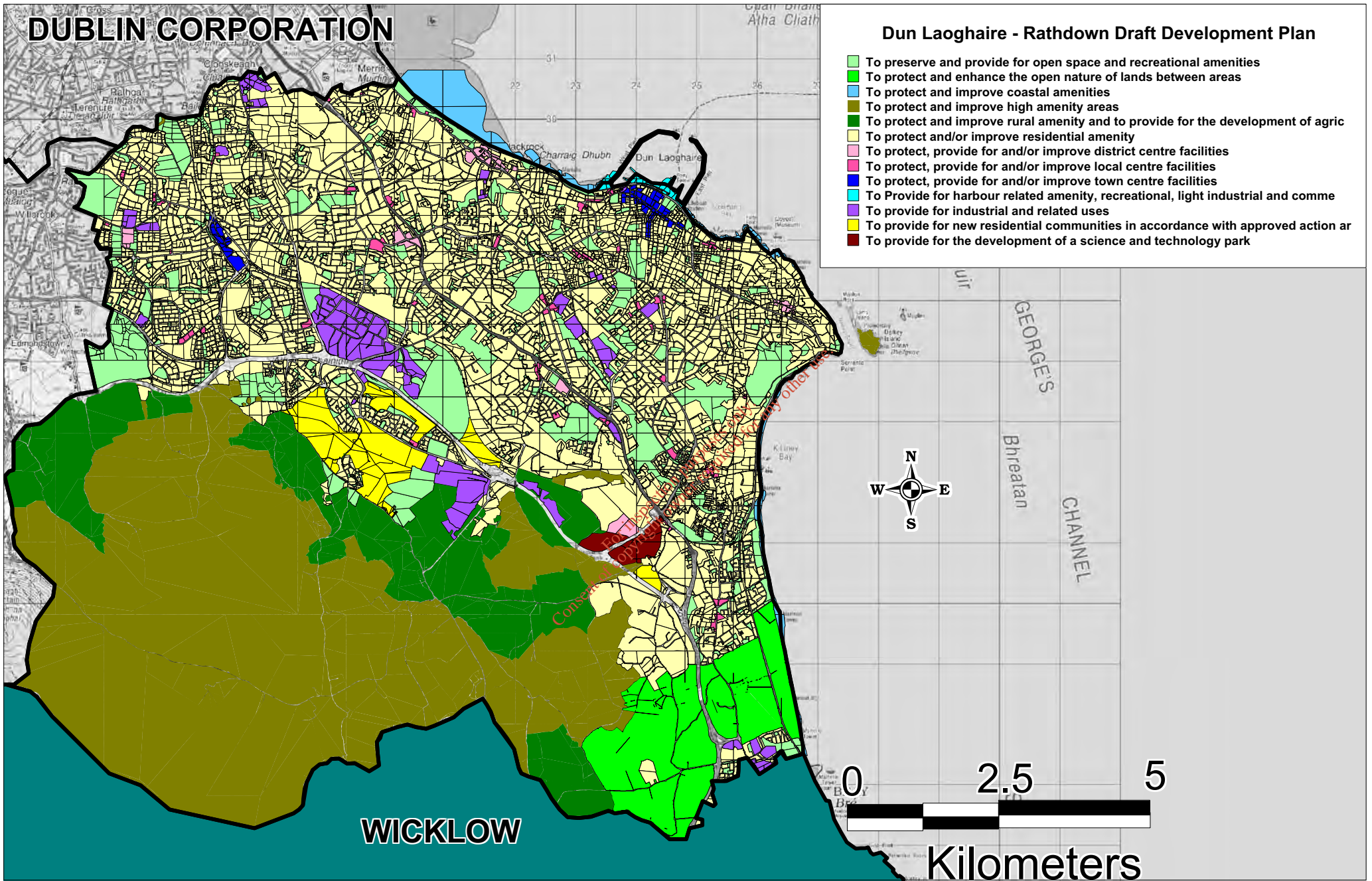


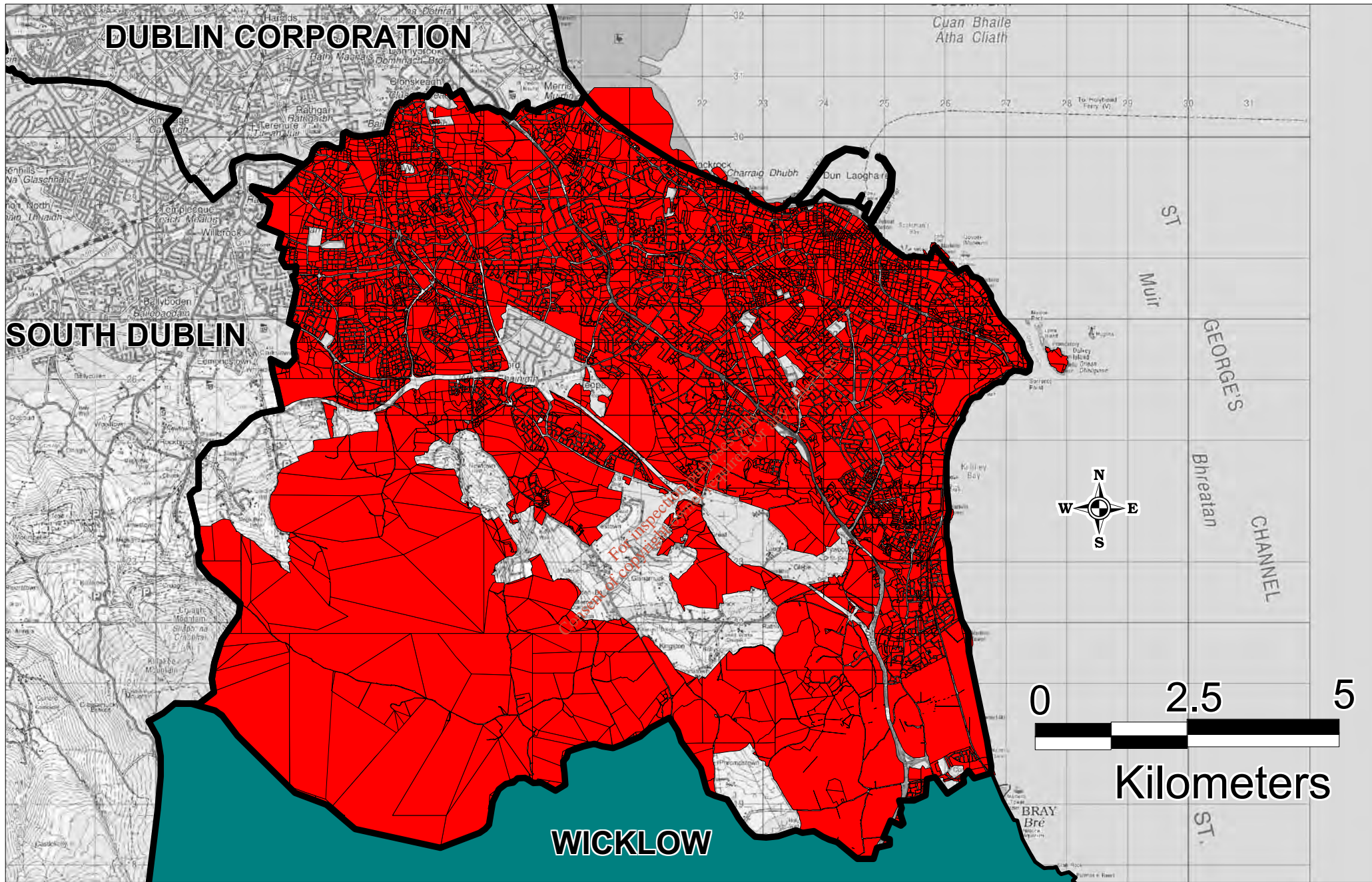
**Figure 5.1 Dublin City Development Plan Zoning**



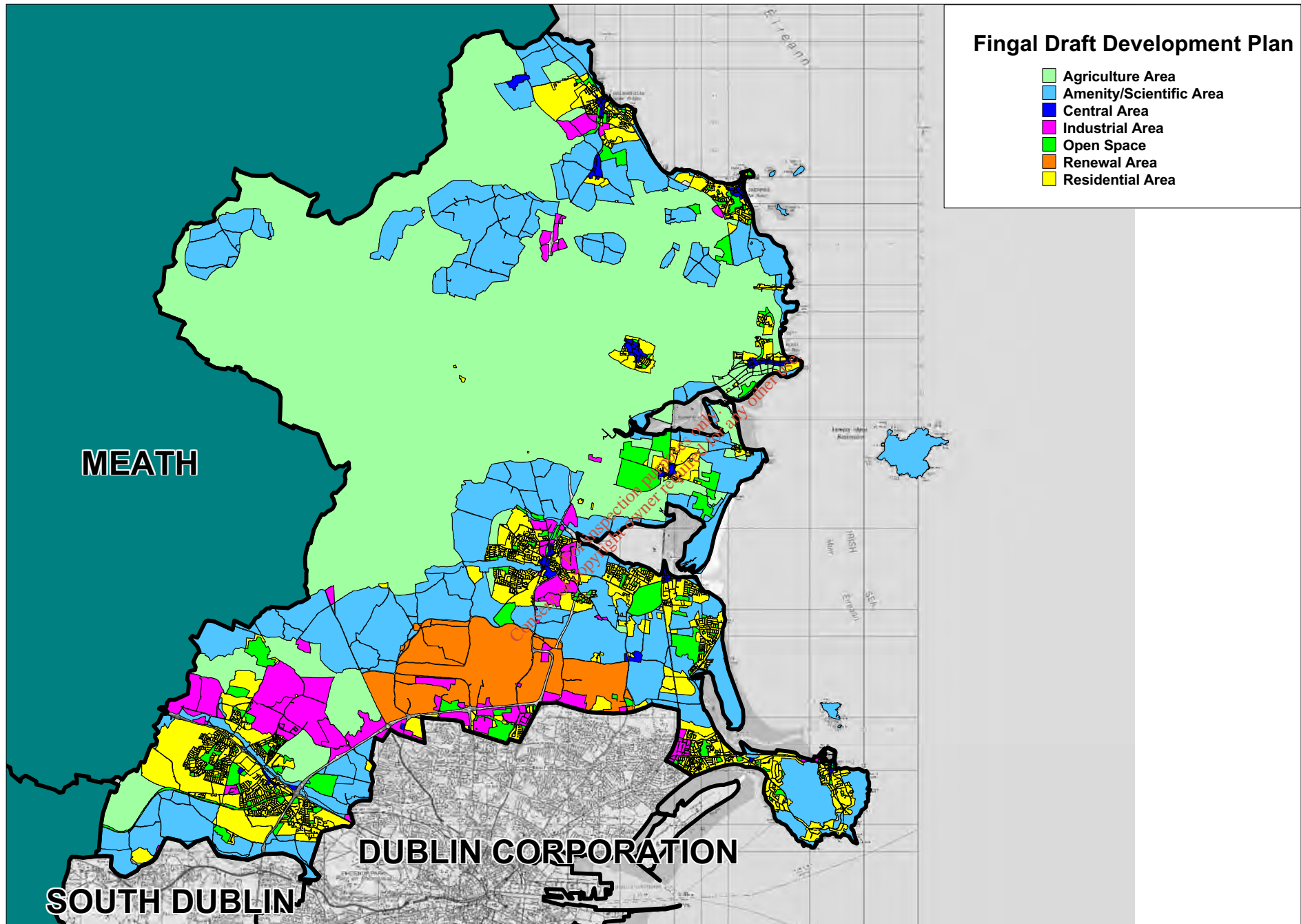
**Fig. 5.2 Dublin City Thermal Treatment Exclusionary Areas**



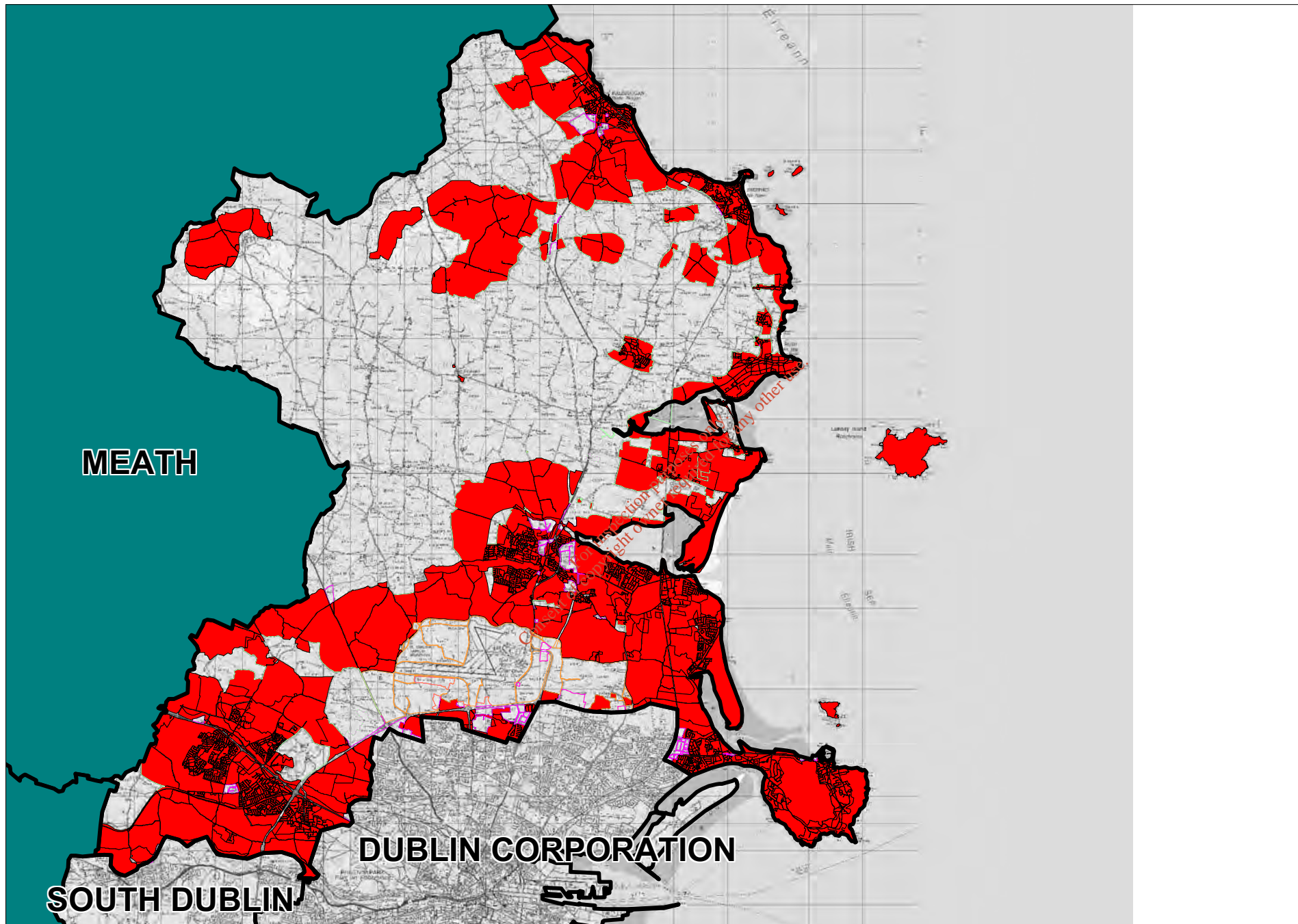
**Figure 5.3 DLRCC Development Plan Zoning**



**Figure 5.4 DLRCC Thermal Treatment Exclusionary Areas**



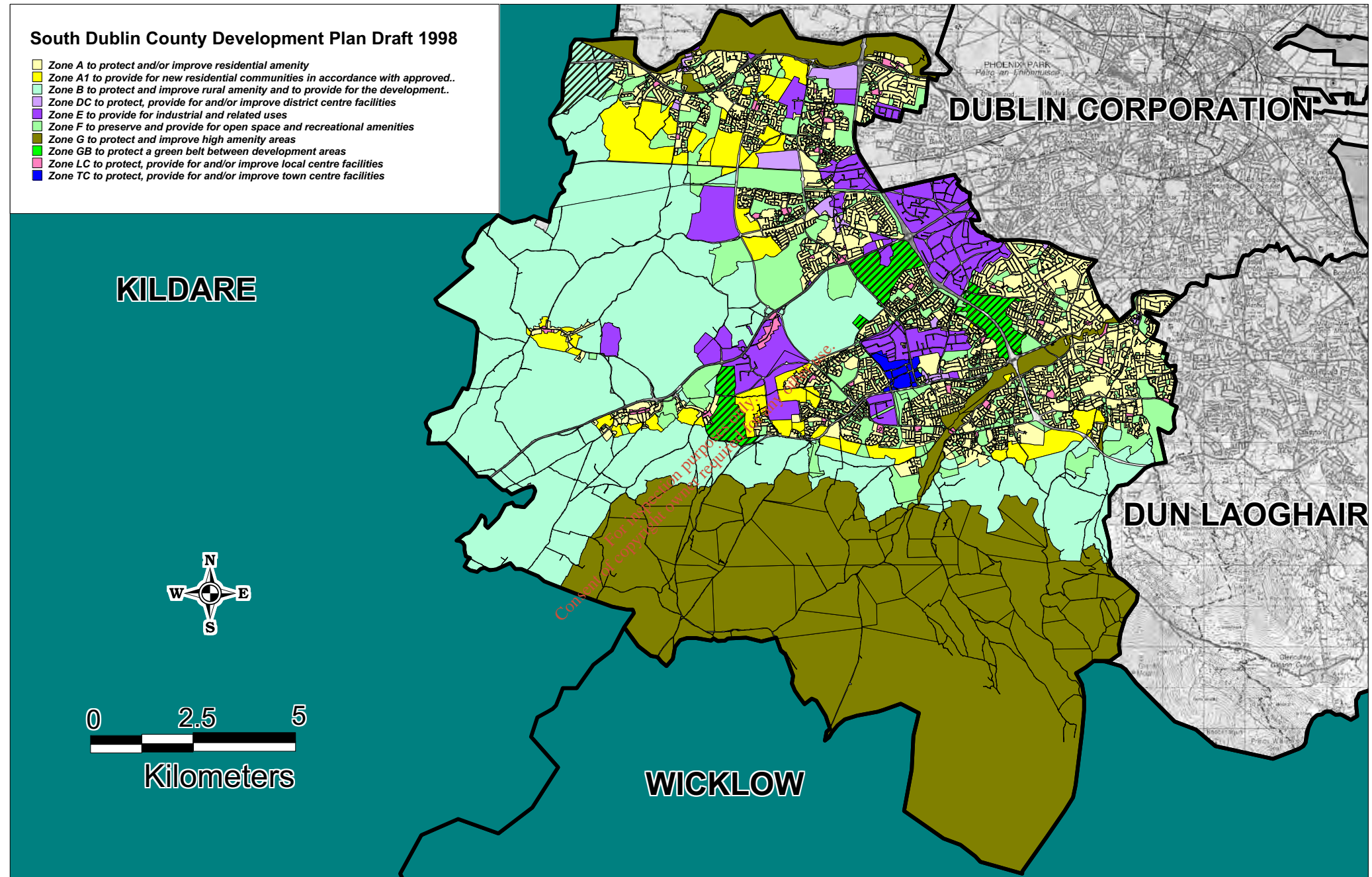
**Figure 5.5 Fingal Development Plan Zoning**



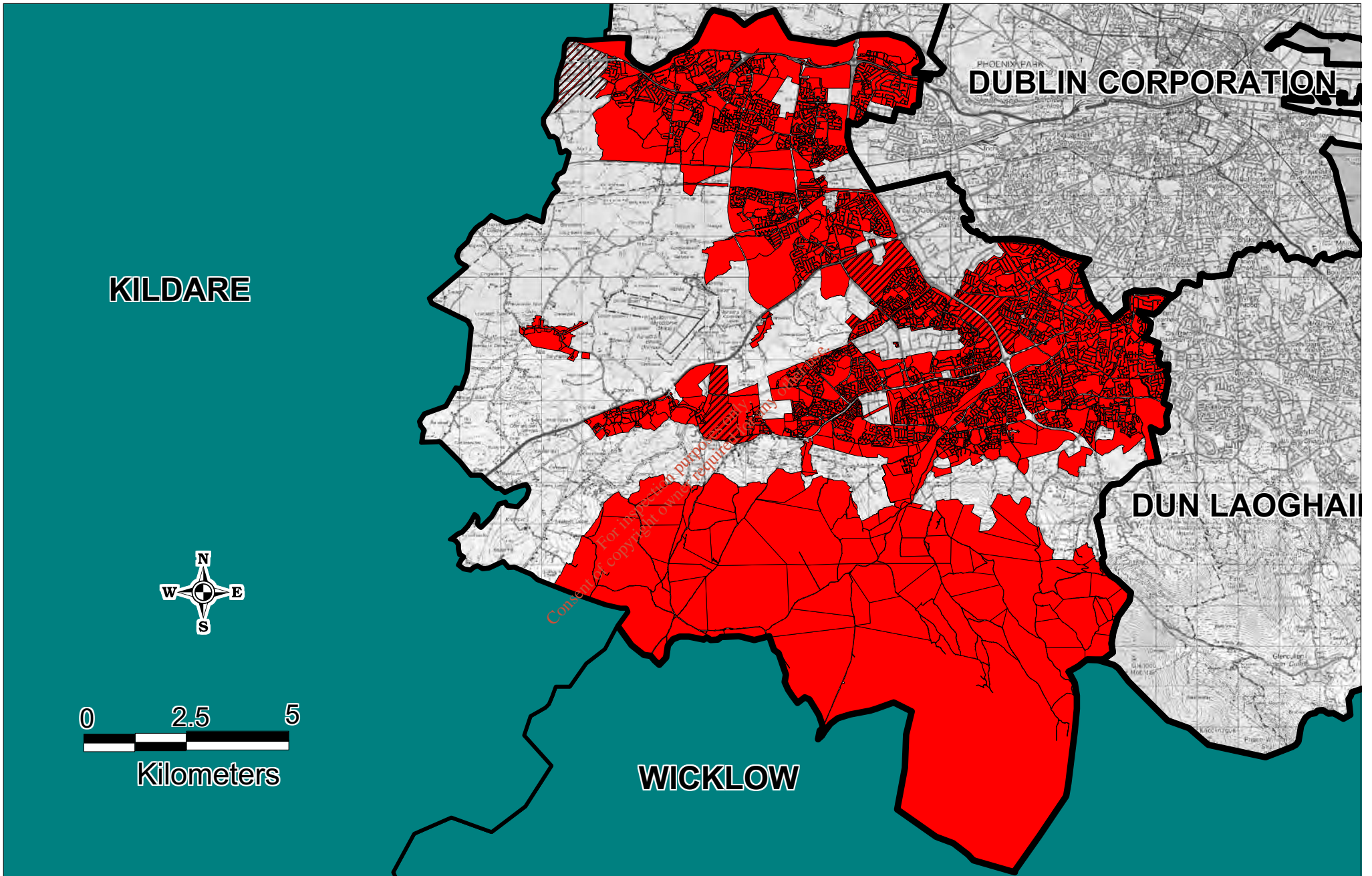
**Figure 5.6 Fingal Thermal Treatment Exclusionary Areas**

**South Dublin County Development Plan Draft 1998**

- Zone A to protect and/or improve residential amenity
- Zone A1 to provide for new residential communities in accordance with approved..
- Zone B to protect and improve rural amenity and to provide for the development..
- Zone DC to protect, provide for and/or improve district centre facilities
- Zone E to provide for industrial and related uses
- Zone F to preserve and provide for open space and recreational amenities
- Zone G to protect and improve high amenity areas
- Zone GB to protect a green belt between development areas
- Zone LC to protect, provide for and/or improve local centre facilities
- Zone TC to protect, provide for and/or improve town centre facilities

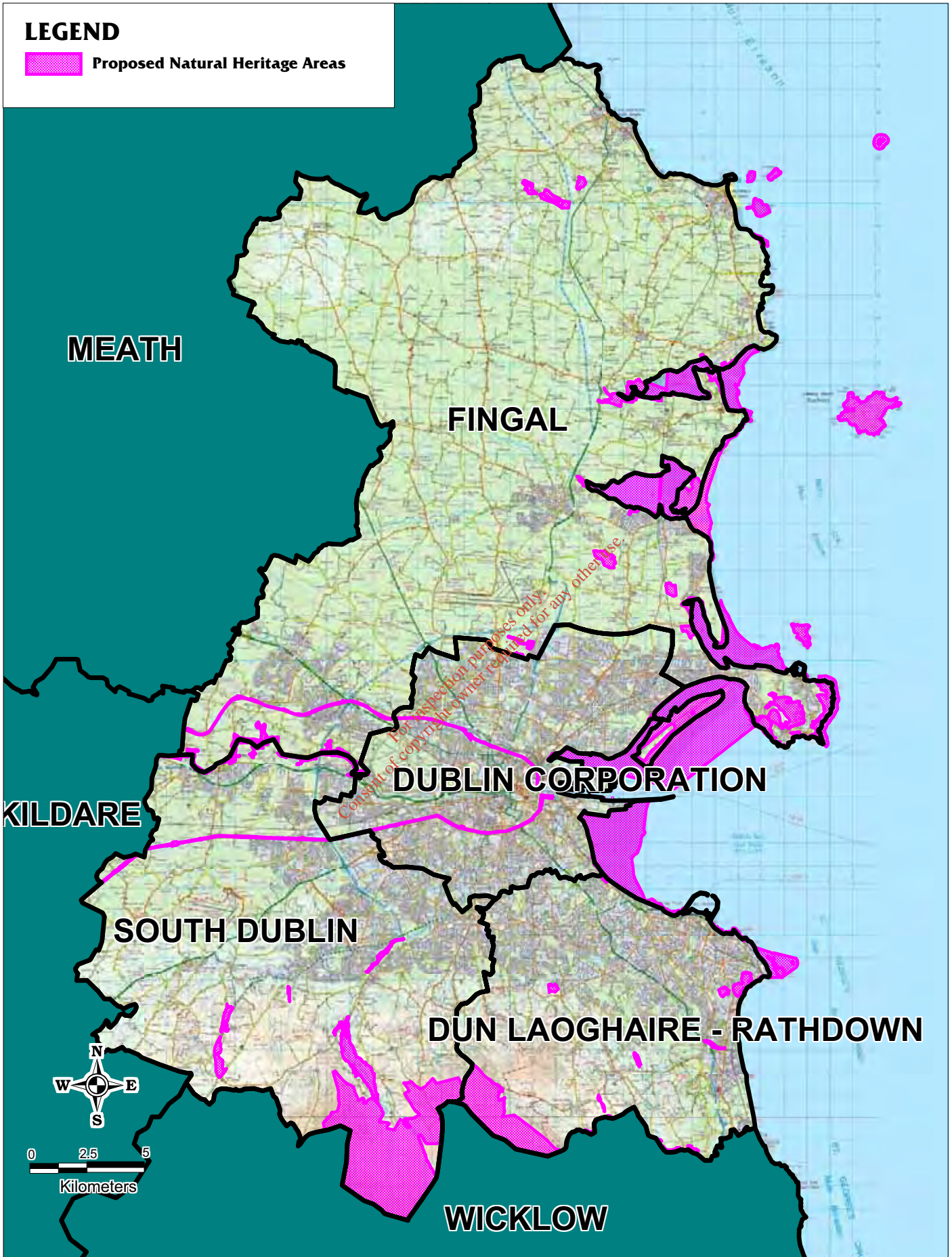


**Figure 5.7 South Dublin Development Plan Zoning**



**Figure 5.8 South Dublin Thermal Treatment Exclusionary Areas**





**Figure 5.9 Proposed Natural Heritage Areas**