

CM-02.

SHALLOW GROUNDWATER MONITORING BOREHOLES.

| POINT. | EASTING. | NORTHING. | |
|--------|----------|-----------|--------|
| MW-02. | 259145 | 225077 | 69.302 |
| MW-03. | 259407 | 225310 | 70.356 |
| MW-04. | 259419 | 225109 | 71.020 |
| MW-05. | 258861 | 225075 | 68.084 |
| MW-06. | 259682 | 225344 | 71.413 |
| MW-07. | 259735 | 225097 | 70.066 |

SURFACE WATER SAMPLING POINTS.

| POINT. | EASTING. | NORTHING. |
|--------|----------|-----------|
| SW1. | 258882 | 224880 |
| SW4. | 259752 | 224970 |
| SW5. | 260587 | 224959 |
| SW6. | 260555 | 224915 |
| SWR-1. | 259269 | 224920 |
| SWR-2. | 258631 | 224845 |
| LC1-A. | 259692 | 225122 |
| LC2-A. | 259599 | 225108 |

BEDROCK GROUNDWATER MONITORING BOREHOLES.

| Point. | Easting. | Northing. | Level (Top of plate) |
|--------|----------|-----------|----------------------|
| MW-08. | 259194 | 225287 | 70.612 |
| MW-09. | 258950 | 224930 | 69.018 |
| MW-10. | 259692 | 225288 | 70.740 |
| MW-11. | 259736 | 225022 | 70.719 |

DUST MONITORING LOCATIONS.

| POINT. | EASTING. | NORTHING. |
|--------|----------|-----------|
| DM-01. | 259739 | 225001 |
| DM-02. | 258893 | 224920 |
| DM-03. | 258864 | 225219 |
| DM-04. | 259683 | 225341 |

NOISE MONITORING LOCATIONS.

| POINT. | EASTING. | NORTHING. |
|--------|----------|-----------|
| N1. | 259739 | 225001 |
| N2. | 258893 | 224920 |
| N3. | 258864 | 225219 |
| N4. | 259683 | 225341 |
| N5. | 259185 | 224354 |

LEACHATE MONITORING LOCATIONS.

| POINT. | EASTING. | NORTHING. |
|--------|----------|-----------|
| L-1. | 259702 | 225096 |
| L-2. | 259722 | 224967 |

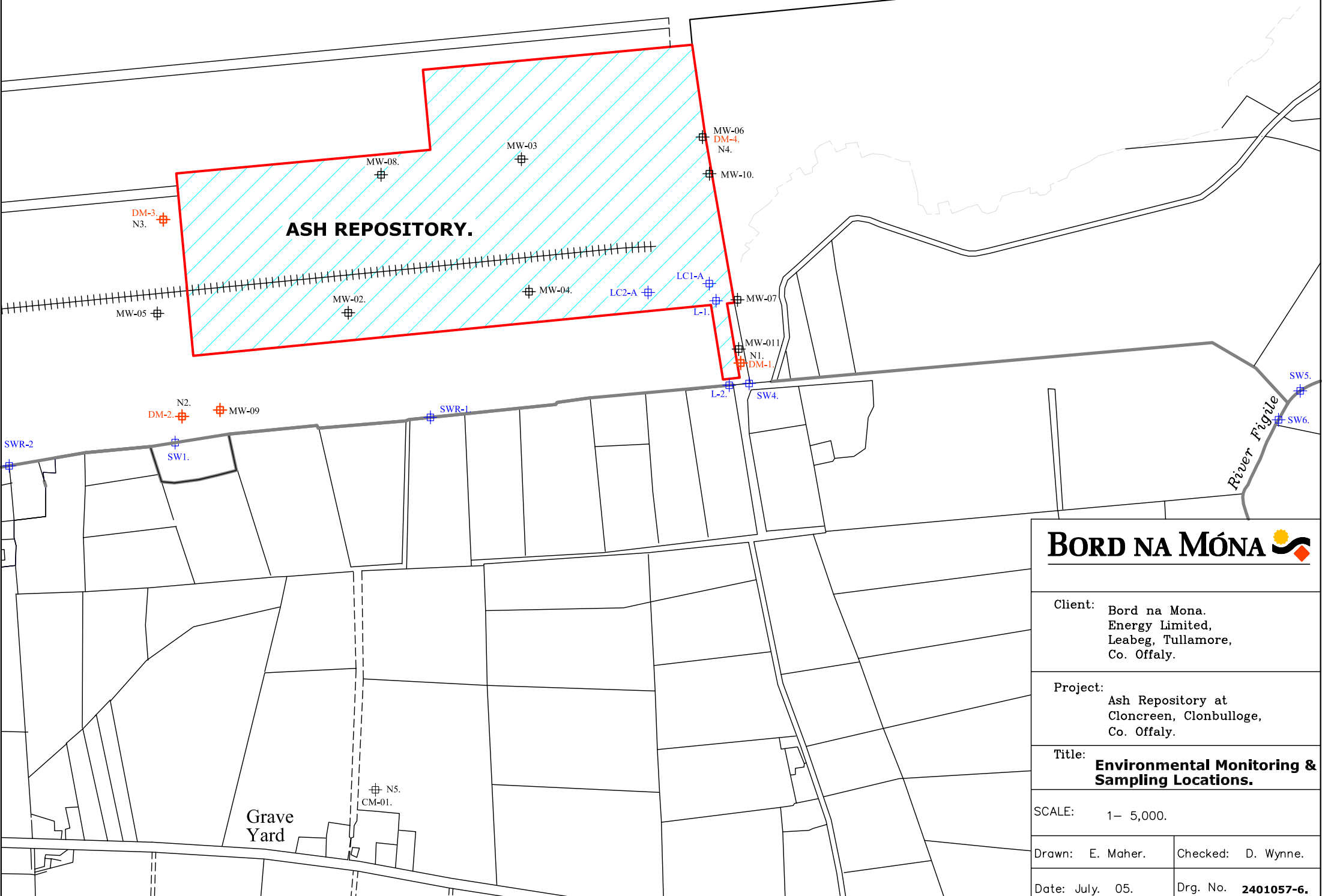
PM-10. MONITORING LOCATIONS.

| POINT. | EASTING. | NORTHING. |
|--------|----------|-----------|
| CM-01. | 259185 | 224354 |
| CM-02. | 258716 | 226928 |

**CLONCREEN BOG.
(1018 Ha.)**

Existing BNM Railway

ASH REPOSITORY.



BORD NA MÓNA

Client: Bord na Mona.
Energy Limited,
Leabeg, Tullamore,
Co. Offaly.

Project: Ash Repository at
Cloncreen, Clonbulloge,
Co. Offaly.

Title: **Environmental Monitoring & Sampling Locations.**

SCALE: 1- 5,000.

Drawn: E. Maher.

Checked: D. Wynne.

Date: July. 05.

Drg. No. **2401057-6.**