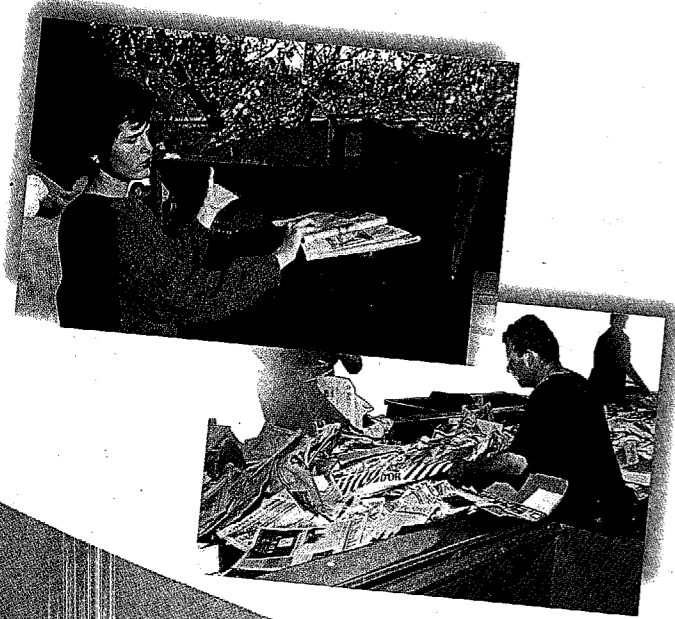


Who is Indaver?

- A Waste Management Company that:
 - Specialises in integrated waste management for industries and households
 - Founded 15 years ago as a joint venture between industry and local government in Flanders, Belgium
 - Managed 800,000 tonnes of waste in 1999, 50% of which was recycled

Why are these facilities needed?

- Ireland does not have enough recycling facilities to achieve the same level of recycling as in other European countries. We only recycled 9% of our municipal waste in 1998 compared to 50% in other EU member states.
- We are currently too dependent on landfill and need to develop modern waste infrastructure to deal with our waste.



What are we proposing to build?

- **Community Recycling Park**
This is a place where the community can bring their recyclable household waste. It is similar to a conventional 'Bring Bank' but will accept a wider range of recyclable material such as cardboard, newspaper, glass, cans, plastics and fluorescent tubes. Free advice and assistance will be available to the local community on how to best manage their household waste.
- **Material Recycling Facility**
This facility will accept unsorted recyclable waste from small to medium sized companies in the North-East. The waste will be sorted using manual and mechanical systems into its separate recyclable components such as paper, cardboard, wood and metal. This material will be sent for recycling elsewhere.
- **Waste-to-Energy Plant - Incineration**
Instead of landfilling waste, this plant will burn non-recyclable waste at a high temperature and in a controlled environment. The heat generated will produce enough electricity to power 16,000 homes annually.

Over 50% of the £60m investment will be spent on guaranteeing the plant will operate well below the strict EU emission limits. This will ensure that the plant has no negative impact on the people living nearby.

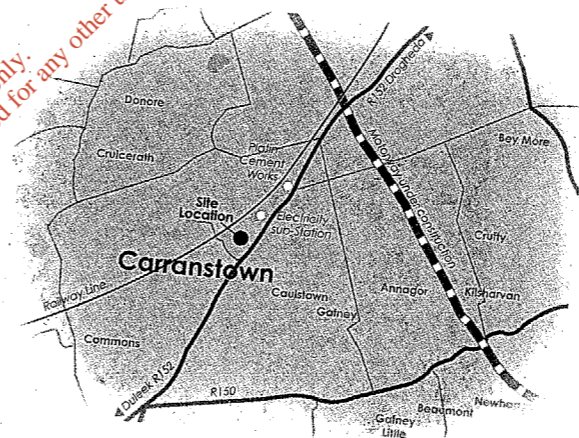


How will the facility be regulated and managed?

This state-of-the-art facility will be run by experienced management, under licence from the EPA, with a policy of consultation and openness to the public.

The facility will operate 24 hours per day. It will accept waste deliveries six days a week; Monday to Friday between 8.00am and 6.30pm and on Saturdays between 8.00am and 2.00pm.

Why at Carranstown?



The site is centrally located with good access from regional and national routes - it's less than 2Km from the North-South motorway. The site is also close to a number of ESB sub-stations, making it efficient to export the electricity generated.

There is already an industrial complex beside the site that includes quarrying activity. As this has larger structures than the proposed new plant, the visual impact will be minimal.

For more information
FreeFone: 1 800 200 646

Or fill out the attached prepaid reply card

Name: _____
Address: _____
Telephone: _____
Fax: _____
e-mail: _____

If you would like to receive further information and all updates on our proposed waste management facility at Carranstown, please complete your details below and return this card.





No Postage Stamp necessary if posted in the Republic of Ireland

Licence No. DN 5143
Indaver Ireland
4 Haddington Terrace
Dun Laoghaire
BUSINESS REPLY
County Dublin

Postage to be paid by
Licensee

We'd like to hear your views

Indaver propose building a waste management facility at Carranstown, County Meath, promoting:

- The recycling of the local community's waste
- The recycling of non-hazardous industrial waste
- The recovery of energy from non-hazardous waste by incineration

The facility will serve communities and industries in County Meath and surrounding counties.

Because an incinerator is part of our facility, we feel that people may be worried about the perceived health risk from emissions, particularly dioxins. We have a track record of safely running incinerators in other locations which operate well below the very strict European Regulations and are not harmful to people living nearby or to the environment. There is no comparison between our modern plants and old style incinerators built and operated by others many years ago.

Our goal is to build and operate this facility with the co-operation of the local community. For that reason, we welcome your views at the planning and construction stages as well as when the new facility is operational.

When you have read through this leaflet, please contact us if you have any queries, concerns or suggestions by phoning us on Freephone 1800 200 646 or by completing the attached Prepaid Reply Card and returning it to us.

John Ahern

General Manager
Indaver Ireland

What will it look like?

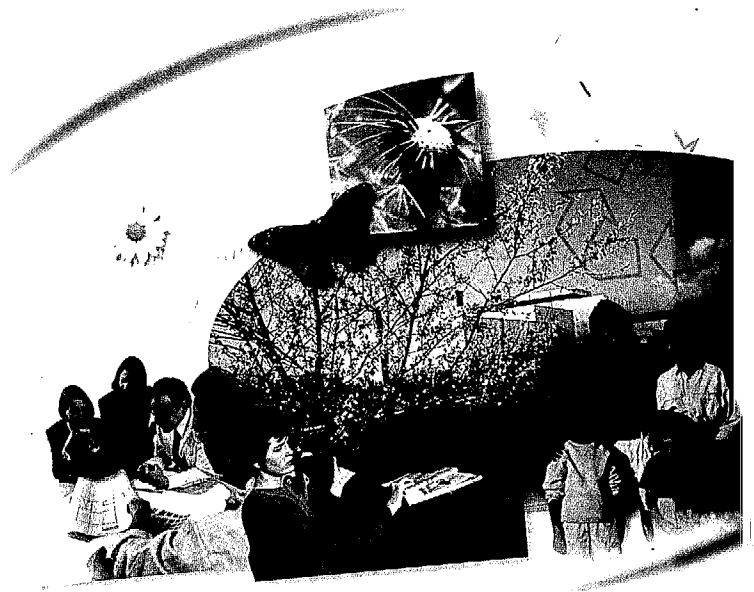


Architect's impression of proposed facility - aerial view



Architect's impression of proposed facility - view from the road

For inspection purposes only.
Content of copyright owner retained for any other use.



INDAVER

IRELAND

Carranstown Waste Management Facility

Information Leaflet

INDAVER

IRELAND

Indaver Ireland, 4 Haddington Terrace, Dun Laoghaire, Co. Dublin, Ireland
Tel: 353 1 214 5830 Fax: 353 1 280 7865

e-mail: info@indaver.ie Website: www.indaver.ie