

## Surface Water: Analytical Results

**SURFACE WATER QUALITY**

(Sheet 1 of 7) Monitoring Point<sup>1</sup>/ Grid Reference: SW1 / 252005E 246005N

Parameter	Statutory Limits	Results		Sampling method <sup>2</sup> (grab, drift etc.)	Normal Analytical Range <sup>2</sup>	Analysis method
		10/12/03	04/02/04			
pH		7.81	7.33	Grab	pH Units	Measr
Temperature		NOTE1	NOTE1	Grab	deg C	Measr
Electrical conductivity EC @ 25 °C (mS/cm)		0.728	0.703	Grab	<0.014mS/cm	Measr
Ammonical Nitrogen as N (mg/l)		<0.2	<0.2	Grab	<0.2mg/l	Spectro
Chemical Oxygen Demand (mg/l)		<15	29	Grab	<15mg/l	Spectro
Biochemical Oxygen Demand (mg/l)		4	4	Grab	<2mg/l	5 Day ATU
Dissolved Oxygen DO (mg/l)		5.9	7.1	Grab	<0.1mg/l	Measr
Calcium Ca (mg/l)		174.30	149.30	Grab	<0.05mg/l	ICP
Cadmium Cd (ug/l)	5.0 <sup>Note 2</sup>	<0.0004	<0.0004	Grab	<0.0004mg/l	ICP
Chromium Cr (ug/l)	50 <sup>Note 2</sup>	<0.001	<0.001	Grab	<0.001mg/l	ICP
Chloride Cl (mg/l)	250 <sup>Note 2</sup>	17	15	Grab	<1mg/l	KONE
Copper Cu (ug/l)	0 <sup>Note 4</sup>	<0.005	<0.005	Grab	<0.005mg/l	ICP
Iron Fe (ug/l)	200 <sup>Note 2</sup>	0.013	0.029	Grab	<0.001mg/l	ICP
Lead Pb (ug/l)	10 <sup>Note 2</sup>	<0.005	<0.005	Grab	<0.005mg/l	ICP
Magnesium Mg (mg/l)		9.56	6.89	Grab	<0.05mg/l	ICP
Manganese Mn (ug/l)	50 <sup>Note 2 &amp; 5</sup>	0.068	0.010	Grab	<0.001mg/l	ICP
Mercury Hg (ug/l)	1.0 <sup>Note 2</sup>	0.00006	<0.00005	Grab	<0.00005mg/l	ICP
Potassium K (mg/l)		3.4	2.8	Grab	<0.2mg/l	Flame Photo
Sodium Na (mg/l)	200 <sup>Note 2</sup>	7.8	9.3	Grab	<0.2mg/l	Flame Photo
Nickel Ni (ug/l)	0 <sup>Note 4</sup>	<0.01	<0.01	Grab	<0.01mg/l	ICP
Total Organic Carbon TOC (mg/l)		<0.005	0.005	Grab	<0.005mg/l	ICP
Sulphate SO <sub>4</sub> (mg/l)	200 <sup>Note 2</sup>	33	43	Grab	<2mg/l	IR
Total Oxidised Nitrogen TON (mg/l as N)		2.1	6.2	Grab	<3mg/l	KONE
Total Alkalinity CaCO <sub>3</sub> (mg/l)		400	330	Grab	<1mg/l	Titration

NOTE1: No data available  
 NOTE 2: Drinking Water Directive (98/83/EC)  
 NOTE 3: Surface Water Regulations (SI N<sup>o</sup>. 294/1989 EC)  
 NOTE 4: EC Drinking Water Regulations (SI N<sup>o</sup>. 439/2000)  
 NOTE 5: Manganese is non-toxic, but the limit value applies due to aesthetic value objections (staining of water)

For inspection purposes only.  
 Consent of copyright owner required for any other use.

**SURFACE WATER QUALITY**

(Sheet 2 of 7) Monitoring Point<sup>1</sup>/ Grid Reference: SW2 / 252050E 246000N

Parameter	Statutory Limits	Results		Sampling method <sup>2</sup> (grab, drift etc.)	Normal Analytical Range <sup>2</sup>	Analysis method
		10/12/03	04/02/04			
pH		7.39	7.30	Grab	pH Units	Measr
Temperature		NOTE1	NOTE1	Grab	deg C	Measr
Electrical conductivity EC @ 25 °C (mS/cm)		0.712	0.634	Grab	<0.014mS/cm	Measr
Ammonical Nitrogen as N (mg/l)		<0.2	<0.2	Grab	<0.2mg/l	Spectro
Chemical Oxygen Demand (mg/l)		<15	37	Grab	<15mg/l	Spectro
Biochemical Oxygen Demand (mg/l)		3	3	Grab	<2mg/l	5 Day ATU
Dissolved Oxygen DO (mg/l)		7.2	7.1	Grab	<0.1mg/l	Measr
Calcium Ca (mg/l)		168.90	129.80	Grab	<0.05mg/l	ICP
Cadmium Cd (ug/l)	5.0 <sup>Note 2</sup>	<0.0004	<0.0004	Grab	<0.0004mg/l	ICP
Chromium Cr (ug/l)	50 <sup>Note 2</sup>	<0.001	<0.001	Grab	<0.001mg/l	ICP
Chloride Cl (mg/l)	250 <sup>Note 2</sup>	15	15	Grab	<1mg/l	KONE
Copper Cu (ug/l)	0 <sup>Note 4</sup>	<0.005	<0.005	Grab	<0.005mg/l	ICP
Iron Fe (ug/l)	200 <sup>Note 2</sup>	0.026	0.045	Grab	<0.001mg/l	ICP
Lead Pb (ug/l)	10 <sup>Note 2</sup>	<0.005	<0.005	Grab	<0.005mg/l	ICP
Magnesium Mg (mg/l)		8.88	5.82	Grab	<0.05mg/l	ICP
Manganese Mn (ug/l)	50 <sup>Note 2 &amp; 5</sup>	0.057	0.010	Grab	<0.001mg/l	ICP
Mercury Hg (ug/l)	1.0 <sup>Note 2</sup>	0.00005	<0.00005	Grab	<0.00005mg/l	ICP
Potassium K (mg/l)		3.0	1.6	Grab	<0.2mg/l	Flame Photo
Sodium Na (mg/l)	200 <sup>Note 2</sup>	7.8	8.4	Grab	<0.2mg/l	Flame Photo
Nickel Ni (ug/l)	0 <sup>Note 4</sup>	<0.01	<0.01	Grab	<0.01mg/l	ICP
Zinc Zn (ug/l)		<0.005	0.005	Grab	<0.005mg/l	ICP
Total Organic Carbon TOC (mg/l)		11	22	Grab	<2mg/l	IR
Sulphate SO <sub>4</sub> (mg/l)	200 <sup>Note 2</sup>	41	46	Grab	<3mg/l	KONE
Total Oxidised Nitrogen TON (mg/l as N)		1.9	7.4	Grab	<0.3mg/l	KONE
Total Alkalinity CaCO <sub>3</sub> (mg/l)		380	260	Grab	<1mg/l	Titration

NOTE1: No data available  
 NOTE 2: Drinking Water Directive (98/83/EC)  
 NOTE 3: Surface Water Regulations (SI N<sup>o</sup>. 294/1989 EC)  
 NOTE 4: EC Drinking Water Regulations (SI N<sup>o</sup>. 439/2000)  
 NOTE 5: Manganese is non-toxic, but the limit value applies due to aesthetic value objections (staining of water)

## SURFACE WATER QUALITY

(Sheet 3 of 7) Monitoring Point/ Grid Reference: SW3 / 251850E 245983N

Parameter	Statutory Limits	Results		Sampling method <sup>2</sup> (grab, drift etc.)	Normal Analytical Range <sup>3</sup>	Analysis method
		10/12/03	04/02/04			
pH		7.45	7.20	Grab	pH Units	Meter
Temperature		NOTE1	NOTE1	Grab	deg C	Meter
Electrical conductivity EC @ 25 ° C (mS/cm)		0.439	0.527	Grab	<0.014mS/cm	Meter
Ammoniacal Nitrogen as N (mg/l)		<0.2	<0.2	Grab	<0.2mg/l	Spectro
Chemical Oxygen Demand (mg/l)		29	72	Grab	<15mg/l	Spectro
Biochemical Oxygen Demand (mg/l)		6	<2	Grab	<2mg/l	5 Day ATU
Dissolved Oxygen DO (mg/l)		7.4	7.2	Grab	<0.1mg/l	Meter
Calcium Ca (mg/l)		155.60	108.80	Grab	<0.05mg/l	ICP
Cadmium Cd (ug/l)	5.0 Note 2	<0.0004	<0.0004	Grab	<0.0004mg/l	ICP
Chromium Cr (ug/l)	50 Note 2	<0.001	<0.001	Grab	<0.001mg/l	ICP
Chloride Cl (mg/l)	250 Note 2	14	14	Grab	<1mg/l	KONE
Copper Cu (ug/l)	0 Note 4	<0.005	<0.005	Grab	<0.005mg/l	ICP
Iron Fe (ug/l)	200 Note 2	0.051	0.048	Grab	<0.001mg/l	ICP
Lead Pb (ug/l)	10 Note 2	<0.005	<0.005	Grab	<0.005mg/l	ICP
Magnesium Mg (mg/l)		7.31	4.14	Grab	<0.05mg/l	ICP
Manganese Mn (ug/l)	50 Note 2 & 5	0.033	0.009	Grab	<0.001mg/l	ICP
Mercury Hg (ug/l)	1.0 Note 2	0.00005	<0.00005	Grab	<0.00005mg/l	CV AA
Potassium K (mg/l)		1.8	0.4	Grab	<0.2mg/l	Flame Photo
Sodium Na (mg/l)	200 Note 2	7.8	6.9	Grab	<0.2mg/l	Flame Photo
Nickel Ni (ug/l)	0 Note 4	<0.01	<0.01	Grab	<0.01mg/l	ICP
Zinc Zn (ug/l)		<0.005	0.005	Grab	<0.005mg/l	ICP
Total Organic Carbon TOC (mg/l)		19	6	Grab	<2mg/l	IR
Sulphate SO <sub>4</sub> (mg/l)	200 Note 2	69	52	Grab	<3mg/l	KONE
Total Oxidised Nitrogen TON (mg/l as N)		3.3	9.7	Grab	<0.3mg/l	KONE
Total Alkalinity CaCO <sub>3</sub> (mg/l)		340	190	Grab	<1mg/l	Titration

NOTE1: No data available

NOTE 2: Drinking Water Directive (98/83/EC)

NOTE 3: Surface Water Regulations (SI N<sup>o</sup>: 294/1989 EC)NOTE 4: EC Drinking Water Regulations (SI N<sup>o</sup>: 439/2000)

NOTE 5: Manganese is non-toxic, but the limit value applies due to aesthetic value objections (staining of water)

## SURFACE WATER QUALITY

(Sheet 4 of 7) Monitoring Point/ Grid Reference: SW4 / 251260E 246065N

Parameter	Statutory Limits	Results	Sampling method <sup>2</sup> (grab, drift etc.)	Normal Analytical Range <sup>3</sup>	Analysis method
		10/12/03			
pH		7.79	Grab	pH Units	Meter
Temperature		NOTE1	Grab	deg C	Meter
Electrical conductivity EC @ 25 ° C (mS/cm)		0.753	Grab	<0.014mS/cm	Meter
Ammoniacal Nitrogen as N (mg/l)		<0.2	Grab	<0.2mg/l	Spectro
Chemical Oxygen Demand (mg/l)		<15	Grab	<15mg/l	Spectro
Biochemical Oxygen Demand (mg/l)		2	Grab	<2mg/l	5 Day ATU
Dissolved Oxygen DO (mg/l)		5.9	Grab	<0.1mg/l	Meter
Calcium Ca (mg/l)		173.20	Grab	<0.05mg/l	ICP
Cadmium Cd (ug/l)	5.0 Note 2	<0.0004	Grab	<0.0004mg/l	ICP
Chromium Cr (ug/l)	50 Note 2	0.002	Grab	<0.001mg/l	ICP
Chloride Cl (mg/l)	250 Note 2	15	Grab	<1mg/l	KONE
Copper Cu (ug/l)	0 Note 4	<0.005	Grab	<0.005mg/l	ICP
Iron Fe (ug/l)	200 Note 2	0.012	Grab	<0.001mg/l	ICP
Lead Pb (ug/l)	10 Note 2	<0.005	Grab	<0.005mg/l	ICP
Magnesium Mg (mg/l)		8.54	Grab	<0.05mg/l	ICP
Manganese Mn (ug/l)	50 Note 2 & 5	0.058	Grab	<0.001mg/l	ICP
Mercury Hg (ug/l)	1.0 Note 2	0.00006	Grab	<0.00005mg/l	CV AA
Potassium K (mg/l)		1.8	Grab	<0.2mg/l	Flame Photo
Sodium Na (mg/l)	200 Note 2	8.1	Grab	<0.2mg/l	Flame Photo
Nickel Ni (ug/l)	0 Note 4	<0.01	Grab	<0.01mg/l	ICP
Zinc Zn (ug/l)		<0.005	Grab	<0.005mg/l	ICP
Total Organic Carbon TOC (mg/l)		10	Grab	<2mg/l	IR
Sulphate SO <sub>4</sub> (mg/l)	200 Note 2	49	Grab	<3mg/l	KONE
Total Oxidised Nitrogen TON (mg/l as N)		1.0	Grab	<0.3mg/l	KONE
Total Alkalinity CaCO <sub>3</sub> (mg/l)		390	Grab	<1mg/l	Titration

NOTE1: No data available

NOTE 2: Drinking Water Directive (98/83/EC)

NOTE 3: Surface Water Regulations (SI N<sup>o</sup>: 294/1989 EC)NOTE 4: EC Drinking Water Regulations (SI N<sup>o</sup>: 439/2000)

NOTE 5: Manganese is non-toxic, but the limit value applies due to aesthetic value objections (staining of water)

**SURFACE WATER QUALITY**

(Sheet 5 of 7) Monitoring Point<sup>1</sup>/ Grid Reference: SW5 / 251353E 245885N

Parameter	Statutory Limits	Results	Sampling method <sup>2</sup> (grab, drift etc.)	Normal Analytical Range <sup>2</sup>	Analysis method
		10/12/03			
pH		7.59	Grab	pH Units	Meter
Temperature		NOTE1	Grab	deg C	Meter
Electrical conductivity EC @ 25 ° C (mS/cm)		0.662	Grab	<0.014mS/cm	Meter
Ammoniacal Nitrogen as N (mg/l)		<0.2	Grab	<0.2mg/l	Spectro
Chemical Oxygen Demand (mg/l)		80	Grab	<15mg/l	Spectro
Biochemical Oxygen Demand (mg/l)		5	Grab	<2mg/l	5 Day ATU
Dissolved Oxygen DO (mg/l)		5.6	Grab	<0.1mg/l	Meter
Calcium Ca (mg/l)		160.90	Grab	<0.05mg/l	ICP
Cadmium Cd (ug/l)	5.0 Note 2	<0.0004	Grab	<0.0004mg/l	ICP
Chromium Cr (ug/l)	50 Note 2	<0.001	Grab	<0.001mg/l	ICP
Chloride Cl (mg/l)	250 Note 2	15	Grab	<1mg/l	KONE
Copper Cu (ug/l)	0 Note 4	<0.005	Grab	<0.005mg/l	ICP
Iron Fe (ug/l)	200 Note 2	0.021	Grab	<0.001mg/l	ICP
Lead Pb (ug/l)	10 Note 2	<0.005	Grab	<0.005mg/l	ICP
Magnesium Mg (mg/l)		7.41	Grab	<0.05mg/l	ICP
Manganese Mn (ug/l)	50 Note 2 & 5	0.018	Grab	<0.001mg/l	ICP
Mercury Hg (ug/l)	1.0 Note 2	0.00005	Grab	<0.00005mg/l	CV AA
Potassium K (mg/l)		1.8	Grab	<0.2mg/l	Flame Photo
Sodium Na (mg/l)	200 Note 2	7.8	Grab	<0.2mg/l	Flame Photo
Nickel Ni (ug/l)	0 Note 4	<0.01	Grab	<0.01mg/l	ICP
Zinc Zn (ug/l)		<0.005	Grab	<0.005mg/l	ICP
Total Organic Carbon TOC (mg/l)		16	Grab	<2mg/l	IR
Sulphate SO <sub>4</sub> (mg/l)	200 Note 2	84	Grab	<3mg/l	KONE
Total Oxidised Nitrogen TON (mg/l as N)		2.10	Grab	<0.3mg/l	KONE
Total Alkalinity CaCO <sub>3</sub> (mg/l)		320	Grab	<1mg/l	Titration

NOTE1: No data available  
 NOTE 2: Drinking Water Directive (98/83/EC)  
 NOTE 3: Surface Water Regulations (SI N<sup>o</sup>: 294/1989 EC)  
 NOTE 4: EC Drinking Water Regulations (SI N<sup>o</sup>: 439/2000)  
 NOTE 5: Manganese is non-toxic, but the limit value applies due to aesthetic value objections (staining of water)

For inspection purposes only.  
 Consent of copyright owner required for any other use.

**SURFACE WATER QUALITY**

(Sheet 6 of 7) Monitoring Point<sup>1</sup>/ Grid Reference: SW6 / 251400E 245680N

Parameter	Statutory Limits	Results	Sampling method <sup>2</sup> (grab, drift etc.)	Normal Analytical Range <sup>2</sup>	Analysis method
		10/12/03			
pH		6.96	Grab	pH Units	Meter
Temperature		NOTE1	Grab	deg C	Meter
Electrical conductivity EC @ 25 ° C (mS/cm)		0.348	Grab	<0.014mS/cm	Meter
Ammoniacal Nitrogen as N (mg/l)		<0.2	Grab	<0.2mg/l	Spectro
Chemical Oxygen Demand (mg/l)		140	Grab	<15mg/l	Spectro
Biochemical Oxygen Demand (mg/l)		6	Grab	<2mg/l	5 Day ATU
Dissolved Oxygen DO (mg/l)		8.2	Grab	<0.1mg/l	Meter
Calcium Ca (mg/l)		66.95	Grab	<0.05mg/l	ICP
Cadmium Cd (ug/l)	5.0 Note 2	<0.0004	Grab	<0.0004mg/l	ICP
Chromium Cr (ug/l)	50 Note 2	<0.001	Grab	<0.001mg/l	ICP
Chloride Cl (mg/l)	250 Note 2	13	Grab	<1mg/l	KONE
Copper Cu (ug/l)	0 Note 4	<0.005	Grab	<0.005mg/l	ICP
Iron Fe (ug/l)	200 Note 2	0.258	Grab	<0.001mg/l	ICP
Lead Pb (ug/l)	10 Note 2	<0.005	Grab	<0.005mg/l	ICP
Magnesium Mg (mg/l)		2.39	Grab	<0.05mg/l	ICP
Manganese Mn (ug/l)	50 Note 2 & 5	0.006	Grab	<0.001mg/l	ICP
Mercury Hg (ug/l)	1.0 Note 2	0.00005	Grab	<0.00005mg/l	CV AA
Potassium K (mg/l)		1.0	Grab	<0.2mg/l	Flame Photo
Sodium Na (mg/l)	200 Note 2	15.4	Grab	<0.2mg/l	Flame Photo
Nickel Ni (ug/l)	0 Note 4	<0.01	Grab	<0.01mg/l	ICP
Zinc Zn (ug/l)		<0.005	Grab	<0.005mg/l	ICP
Total Organic Carbon TOC (mg/l)		37	Grab	<2mg/l	IR
Sulphate SO <sub>4</sub> (mg/l)	200 Note 2	5	Grab	<3mg/l	KONE
Total Oxidised Nitrogen TON (mg/l as N)		1.5	Grab	<0.3mg/l	KONE
Total Alkalinity CaCO <sub>3</sub> (mg/l)		140	Grab	<1mg/l	Titration

NOTE1: No data available  
 NOTE 2: Drinking Water Directive (98/83/EC)  
 NOTE 3: Surface Water Regulations (SI N<sup>o</sup>: 294/1989 EC)  
 NOTE 4: EC Drinking Water Regulations (SI N<sup>o</sup>: 439/2000)  
 NOTE 5: Manganese is non-toxic, but the limit value applies due to aesthetic value objections (staining of water)

**SURFACE WATER QUALITY**

(Sheet 7 of 7) Monitoring Point<sup>1</sup>/ Grid Reference: SW4A / 252340E 245750N

Parameter	Statutory Limits	Results (mg/l)	Sampling method <sup>2</sup> (grab, drift etc.)	Normal Analytical Range <sup>2</sup>	Analysis method
		10/03/04			
pH		7.62	Grab	pH Units	Meter
Temperature		NOTE1	Grab	deg C	Meter
Electrical conductivity EC @ 25 ° C (mS/cm)		0.751	Grab	<0.014mS/cm	Meter
Ammoniacal Nitrogen as N (mg/l)		<0.2	Grab	<0.2mg/l	Spectro
Chemical Oxygen Demand (mg/l)		<1.5	Grab	<15mg/l	Spectro
Biochemical Oxygen Demand (mg/l)		<2	Grab	<2mg/l	5 Day ATU
Dissolved Oxygen DO (mg/l)		6.6	Grab	<0.1mg/l	Meter
Calcium Ca (mg/l)		158.20	Grab	<0.05mg/l	ICP
Cadmium Cd (ug/l)	5.0 <sup>Note 2</sup>	<0.0004	Grab	<0.0004mg/l	ICP
Chromium Cr (ug/l)	50 <sup>Note 2</sup>	<0.001	Grab	<0.001mg/l	ICP
Chloride Cl (mg/l)	250 <sup>Note 2</sup>	14	Grab	<1mg/l	KONE
Copper Cu (ug/l)	0 <sup>Note 4</sup>	<0.005	Grab	<0.005mg/l	ICP
Iron Fe (ug/l)	200 <sup>Note 2</sup>	0.009	Grab	<0.001mg/l	ICP
Lead Pb (ug/l)	10 <sup>Note 2</sup>	<0.005	Grab	<0.005mg/l	ICP
Magnesium Mg (mg/l)		9.66	Grab	<0.05mg/l	ICP
Manganese Mn (ug/l)	50 <sup>Note 2 &amp; 5</sup>	0.033	Grab	<0.001mg/l	ICP
Mercury Hg (ug/l)	1.0 <sup>Note 2</sup>	<0.00005	Grab	<0.00005mg/l	CV AA
Potassium K (mg/l)		1.6	Grab	<0.2mg/l	Flame Photo
Sodium Na (mg/l)	200 <sup>Note 2</sup>	7.6	Grab	<0.2mg/l	Flame Photo
Nickel Ni (ug/l)	0 <sup>Note 4</sup>	<0.010	Grab	<0.01mg/l	ICP
Zinc Zn (ug/l)		<0.005	Grab	<0.005mg/l	ICP
Total Organic Carbon TOC (mg/l)		7	Grab	<2mg/l	IR
Sulphate SO <sub>4</sub> (mg/l)	200 <sup>Note 2</sup>	37	Grab	<3mg/l	KONE
Total Oxidised Nitrogen TON (mg/l as N)		2.1	Grab	<0.3mg/l	KONE
Total Alkalinity CaCO <sub>3</sub> (mg/l)		400	Grab	<1mg/l	Titration

NOTE1: No data available  
 NOTE 2: Drinking Water Directive (98/83/EC)  
 NOTE 3: Surface Water Regulations (SI N°: 294/1989 EC)  
 NOTE 4: EC Drinking Water Regulations (SI N°: 439/2000)  
 NOTE 5: Manganese is non-toxic, but the limit value applies due to aesthetic value objections (staining of water)

Consent of copyright owner required for any other use.  
 For inspection purposes only.



Alcontrol Laboratories (Dublin)

188 Rossmount Business Park,  
 Ballycoolin,  
 Dublin 11  
 Ireland  
 Tel: +353 (0) 1 8829893  
 Fax: +353 (0) 1 8829895

**CERTIFICATE OF ANALYSIS**

Client: Enviro (Dublin)

Unit 4  
 The Plaza  
 Swords  
 Co. Dublin  
 Ireland

Attention: Enda Hoey

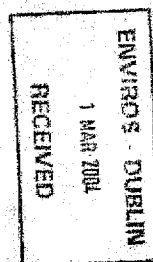
Date: 17 February, 2004

Our Reference: 04-B00492

Your Reference: TH071

Location:

A total of 3 samples was received for analysis on Wednesday 4 February 2004. We are pleased to enclose our final report. It was a pleasure to be of service to you, and we look forward to our continuing association.



Signed  
  
 Keel Seally  
 Site Manager

Checked By  
  
 Enda Hoey

Lab Number: CLB-04-B0492  
 Printed at 10:56 on 17/02/2004  
 Approved Signature: Enda Hoey, Site Manager  
 Required Office: Compliance/Quality, Site Team, Ballycoolin, 188 Rkt, Rossmount Business Park, Dublin 11  
 Approved in: English on 17/02/2004





Interim  
 Validated

### ALcontrol Laboratories Ireland

#### Table Of Results

Ref Number: 04-B00492

Client: Enviro (Dublin)

Date of Receipt: 04/02/2004  
 (of first sample)

Sample Type: WATER

Location:

Client Contact: Enda Hoey

Client Ref: TH071

Detection Method	5 DAY ATU	CV AA	FLAME PHOTO	FLAME PHOTO	ICP	ICP	ICP USN	ICP USN	ICP USN	ICP USN	ICP USN	ICP USN	ICP USN	ICP USN	IR		
	Method Detection Limit	<2mg/l	<0.05ug/l	<0.2mg/l	<0.2mg/l	<0.05mg/l	<0.05mg/l	<0.4ug/l	<1ug/l	<5ug/l	<5ug/l	<1ug/l	<10ug/l	<5ug/l	<2mg/l		
UKAS Accredited	<input checked="" type="checkbox"/>	<input checked="" type="checkbox"/>	<input checked="" type="checkbox"/>	<input checked="" type="checkbox"/>	<input checked="" type="checkbox"/>	<input checked="" type="checkbox"/>	<input checked="" type="checkbox"/>	<input checked="" type="checkbox"/>	<input checked="" type="checkbox"/>	<input checked="" type="checkbox"/>	<input checked="" type="checkbox"/>	<input checked="" type="checkbox"/>	<input checked="" type="checkbox"/>	<input checked="" type="checkbox"/>	<input checked="" type="checkbox"/>		
Alcontrol Reference	Sample Identity	Other ID	BOD Unfiltered	Dissolved Mercury Low Level	Potassium	Sodium	Dissolved Calcium	Dissolved Magnesium	Dissolved Calcium Low Level	Dissolved Chromium Low Level	Dissolved Copper Low Level	Dissolved Iron Low Level	Dissolved Lead Low Level	Dissolved Manganese Low Level	Dissolved Nickel Low Level	Dissolved Zinc Low Level	Total Organic Carbon
			mg/l	ug/l	mg/l	mg/l	mg/l	mg/l	ug/l	ug/l	ug/l	ug/l	ug/l	ug/l	ug/l	ug/l	mg/l
04-B00492-S0027	TH071/SW1/04/02/04	UNKNOWN	4	<0.05	2.6	9.3	149.30	6.89	<0.4	<1	5	29	10	5	10	5	16
04-B00492-S0028	TH071/SW2/04/02/04	UNKNOWN	1	<0.05	1.6	8.4	129.80	5.82	<0.4	<1	5	45	10	5	10	5	22
04-B00492-S0029	TH071/SW3/04/02/04	UNKNOWN	2	<0.05	0.4	6.9	108.80	4.14	<0.4	<1	5	48	5	5	10	5	9

Notes: METHOD DETECTION LIMITS ARE NOT ALWAYS ACHIEVABLE DUE TO VARIOUS CIRCUMSTANCES BEYOND OUR CONTROL

NDP = NO DETERMINATION POSSIBLE

NFP = NO FIBRES PRESENT

Checked By Dylan Halpin Dylan Halpin

Printed at 12:32 on 17/02/2004

\* SUBCONTRACTED TO OTHER LABORATORY / \*\* SUBCONTRACTED TO ALCONTROL CHESTER

Page 4 of 5

ENVIRONMENTAL IMPACT STATEMENT

Interim  
 Validated

### ALcontrol Laboratories Ireland

#### Table Of Results

Ref Number: 04-B00492

Client: Enviro (Dublin)

Date of Receipt: 04/02/2004  
 (of first sample)

Sample Type: WATER

Location:

Client Contact: Enda Hoey

Client Ref: TH071

Detection Method	KONE	KONE	KONE	MEIER	MEIER	MEIER	SPECTRO	SPECTRO	TITRATION		
Method Detection Limit	<1mg/l	<3mg/l	<0.3mg/l	<0.05mg/cm	<0.1mg/l	mg/l	<0.2mg/l	<15mg/l	<1mg/l		
UKAS Accredited	<input checked="" type="checkbox"/>	<input checked="" type="checkbox"/>	<input checked="" type="checkbox"/>	<input checked="" type="checkbox"/>	<input checked="" type="checkbox"/>	<input checked="" type="checkbox"/>	<input checked="" type="checkbox"/>	<input checked="" type="checkbox"/>	<input checked="" type="checkbox"/>		
Alcontrol Reference	Sample Identity	Other ID	Chloride	Sulphate	Total Oxidized Nitrogen as N	Conductivity	Dissolved Oxygen	pH	Ammoniacal Nitrogen as N	COD Sulfide	Total Alkalinity as CaCO3
			mg/l	mg/l	mg/l	mS/cm	mg/l	pH Units	mg/l	mg/l	mg/l
04-B00492-S0027	TH071/SW1/04/02/04	UNKNOWN	15	43	6.2	0.703	7.1	7.33	<0.2	29	330
04-B00492-S0028	TH071/SW2/04/02/04	UNKNOWN	15	46	7.4	0.634	7.1	7.30	<0.2	37	260
04-B00492-S0029	TH071/SW3/04/02/04	UNKNOWN	14	52	9.7	0.527	7.2	7.20	<0.2	72	190

Notes: METHOD DETECTION LIMITS ARE NOT ALWAYS ACHIEVABLE DUE TO VARIOUS CIRCUMSTANCES BEYOND OUR CONTROL

NDP = NO DETERMINATION POSSIBLE

NFP = NO FIBRES PRESENT

Checked By Dylan Halpin Dylan Halpin

Printed at 12:32 on 17/02/2004

\* SUBCONTRACTED TO OTHER LABORATORY / \*\* SUBCONTRACTED TO ALCONTROL CHESTER

Page 5 of 5



**ALcontrol Laboratories Ireland**  
Test Schedule

Ref Number: 04-B01114/01  
Client: Enviro (Dublin)  
Date of Receipt: 10/03/2004

Sample Type: WATER  
Location:  
Client Contact: Enda Hoey  
Client Ref: TH 071

ALcontrol Reference	Sample Identity	Other ID	P / V	Detection Method													
				UKAS Accredited	5 DAY ATU	AA	AA	CV AA	Filtration	Filtration	FLAME PHOTO	FLAME PHOTO	GRAVIMETRIC	HPLC	ICP	ICP	ICP
				BOD Unfiltered	Disolved Arsenic Low Level	Disolved Selenium Low Level	Disolved Mercury Low Level	Faecal Coliforms	Total Coliforms	Potassium	Sodium	Total Solids	Total Phosphate by HPLC	Disolved Barium	Disolved Boron	Disolved Calcium	Disolved Magnesium
04-B01114-S0010-A01	BH 2	UNKNOWN	250ml Sterile Plastic Bottle - 1200ml					X	X								
04-B01114-S0010-A04	BH 2	UNKNOWN	Plastic Bottle - 1200ml														
04-B01114-S0010-A06	BH 2	UNKNOWN	Plastic Bottle - 1200ml														
04-B01114-S0010-A08	BH 2	UNKNOWN	Plastic Bottle - 1200ml														
04-B01114-S0010-A10	BH 2	UNKNOWN	Glass Bottle	X	X												
04-B01114-S0010-A12	BH 2	UNKNOWN	Glass Bottle														
04-B01114-S0011-A01	BH 3	UNKNOWN	250ml Sterile Plastic Bottle - 1200ml					X	X								
04-B01114-S0011-A03	BH 3	UNKNOWN	Plastic Bottle - 1200ml														
04-B01114-S0011-A05	BH 3	UNKNOWN	Plastic Bottle - 1200ml														
04-B01114-S0011-A07	BH 3	UNKNOWN	Plastic Bottle - 1200ml														
04-B01114-S0011-A09	BH 3	UNKNOWN	Glass Bottle					X	X								
04-B01114-S0011-A11	BH 3	UNKNOWN	Glass Bottle														
04-B01114-S0011-A13	BH 3	UNKNOWN	250ml Sterile Plastic Bottle - 1200ml														
04-B01114-S0011-A15	BH 4A	UNKNOWN	Plastic Bottle - 1200ml														
04-B01114-S0011-A17	BH 4A	UNKNOWN	Plastic Bottle - 1200ml														
04-B01114-S0011-A19	BH 4A	UNKNOWN	Plastic Bottle - 1200ml														
04-B01114-S0011-A21	BH 4A	UNKNOWN	Glass Bottle					X	X								
04-B01114-S0011-A23	BH 5	UNKNOWN	250ml Sterile Plastic Bottle - 1200ml														
04-B01114-S0011-A25	BH 5	UNKNOWN	Plastic Bottle - 1200ml														

Notes : NUMERIC VALUES INDICATE ADDITIONAL SCHEDULING

Checked By 

Printed at 10:05 on 15/03/2004

\* SUBCONTRACTED TO OTHER LABORATORY / \*\* SAMPLES ANALYSED AT THE CHESTER LABORATORY

Page 2 of 13

ENVIRONMENTAL IMPACT STATEMENT

**ALcontrol Laboratories Ireland**  
Test Schedule

Ref Number: 04-B01114/01  
Client: Enviro (Dublin)  
Date of Receipt: 10/03/2004

Sample Type: WATER  
Location:  
Client Contact: Enda Hoey  
Client Ref: TH 071

ALcontrol Reference	Sample Identity	Other ID	P / V	Detection Method													
				UKAS Accredited	5 DAY ATU	AA	AA	CV AA	Filtration	Filtration	FLAME PHOTO	FLAME PHOTO	GRAVIMETRIC	HPLC	ICP	ICP	ICP
				BOD Unfiltered	Disolved Arsenic Low Level	Disolved Selenium Low Level	Disolved Mercury Low Level	Faecal Coliforms	Total Coliforms	Potassium	Sodium	Total Solids	Total Phosphate by HPLC	Disolved Barium	Disolved Boron	Disolved Calcium	Disolved Magnesium
04-B01114-S0013-A02	BH 5	UNKNOWN	Plastic Bottle - 1200ml														
04-B01114-S0013-A05	BH 5	UNKNOWN	Plastic Bottle - 1200ml														
04-B01114-S0013-A10	BH 5	UNKNOWN	Plastic Bottle		X	X											
04-B01114-S0013-A06	BH 5	UNKNOWN	Glass Bottle														
04-B01114-S0014-A01	BH 6	UNKNOWN	250ml Sterile Plastic Bottle - 1200ml					X	X								
04-B01114-S0014-A04	BH 6	UNKNOWN	Plastic Bottle - 1200ml														
04-B01114-S0014-A06	BH 6	UNKNOWN	Plastic Bottle - 1200ml														
04-B01114-S0014-A08	BH 6	UNKNOWN	Plastic Bottle - 1200ml														
04-B01114-S0014-A10	BH 6	UNKNOWN	Plastic Bottle		X	X											
04-B01114-S0014-A12	BH 6	UNKNOWN	Glass Bottle														
04-B01114-S0015-A01	BH 7	UNKNOWN	250ml Sterile Plastic Bottle - 1200ml					X	X								
04-B01114-S0015-A04	BH 7	UNKNOWN	Plastic Bottle - 1200ml														
04-B01114-S0015-A06	BH 7	UNKNOWN	Plastic Bottle - 1200ml														
04-B01114-S0015-A08	BH 7	UNKNOWN	Plastic Bottle - 1200ml														
04-B01114-S0015-A10	BH 7	UNKNOWN	Plastic Bottle		X	X											
04-B01114-S0015-A12	BH 7	UNKNOWN	Glass Bottle														
04-B01114-S0016-A01	BH 8	UNKNOWN	250ml Sterile Plastic Bottle - 1200ml					X	X								
04-B01114-S0016-A04	BH 8	UNKNOWN	Plastic Bottle - 1200ml														
04-B01114-S0016-A06	BH 8	UNKNOWN	Plastic Bottle - 1200ml														
04-B01114-S0016-A08	BH 8	UNKNOWN	Plastic Bottle - 1200ml														

Notes : NUMERIC VALUES INDICATE ADDITIONAL SCHEDULING

Checked By 

Printed at 10:05 on 15/03/2004

\* SUBCONTRACTED TO OTHER LABORATORY / \*\* SAMPLES ANALYSED AT THE CHESTER LABORATORY

Page 3 of 13

A10.4-7

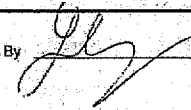
### ALcontrol Laboratories Ireland Test Schedule

Ref Number: 04-B01114/01  
Client: Enviro (Dublin)  
Date of Receipt: 10/03/2004

Sample Type: WATER  
Location:  
Client Contact: Enda Hoey  
Client Ref: TH 071

ALcontrol Reference	Sample Identity	Other ID	P / V	Detection Method													
				UKAS Accredited	5 DAY ATU	AA	AA	CV AA	Filtration	Filtration	FLUOR PHOTO	FLUOR PHOTO	GRAVIMETRIC	HPLC	ICP	ICP	ICP
				BOD Unfiltered	Disolved Arsenic Low Level	Disolved Selenium Low Level	Disolved Mercury Low Level	Faecal Coliforms	Total Coliforms	Potassium	Sodium	Total Solids	Total Phosphorus by HPLC	Disolved Boron	Disolved Beryllium	Disolved Calcium	Disolved Magnesium
04-B01114-50015-A10	BH 8	UNKNOWN	Plastic Bottle		X	X				X	X	X		X	X	X	X
04-B01114-50016-A25	BH 8	UNKNOWN	Glass Bottle														
04-B01114-50017-A01	BH 9A	UNKNOWN	250ml Sterile					X	X								
04-B01114-50017-A04	BH 9A	UNKNOWN	Plastic Bottle + NaCl														
04-B01114-50017-A06	BH 9A	UNKNOWN	Plastic Bottle + NaCl														
04-B01114-50017-A08	BH 9A	UNKNOWN	Plastic Bottle + NaCl														
04-B01114-50017-A10	BH 9A	UNKNOWN	Plastic Bottle		X	X				X	X	X		X	X	X	X
04-B01114-50017-A26	BH 9A	UNKNOWN	Glass Bottle				X										
04-B01114-50018-A01	SW 1A	UNKNOWN	Plastic Bottle + NaCl	On Hold													
04-B01114-50018-A02	SW 1A	UNKNOWN	Plastic Bottle				X										
04-B01114-50018-A17	SW 1A	UNKNOWN	Glass Bottle				X										

Notes : NUMERIC VALUES INDICATE ADDITIONAL SCHEDULING

Checked By 

ENVIRONMENTAL IMPACT STATEMENT

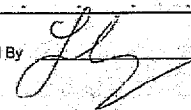
### ALcontrol Laboratories Ireland Test Schedule

Ref Number: 04-B01114/01  
Client: Enviro (Dublin)  
Date of Receipt: 10/03/2004

Sample Type: WATER  
Location:  
Client Contact: Enda Hoey  
Client Ref: TH 071

ALcontrol Reference	Sample Identity	Other ID	P / V	Detection Method													
				UKAS Accredited	ICP	ICP USN	ICP USN	ICP USN	ICP USN	ICP USN	ICP USN	ICP USN	ICP USN	ICP USN	JR	KONE	KONE
				Disolved Phosphorus	Disolved Cadmium Low Level	Disolved Chromium Low Level	Disolved Copper Low Level	Disolved Iron Low Level	Disolved Lead Low Level	Disolved Manganese Low Level	Disolved Nickel Low Level	Disolved Silver Low Level	Disolved Zinc Low Level	Total Organic Carbon	Chloride	Fluoride	Sulphate
04-B01114-50010-A01	BH 2	UNKNOWN	250ml Sterile														
04-B01114-50010-A04	BH 2	UNKNOWN	Plastic Bottle + NaCl														
04-B01114-50010-A06	BH 2	UNKNOWN	Plastic Bottle + NaCl														
04-B01114-50010-A10	BH 2	UNKNOWN	Plastic Bottle	X	X	X	X	X	X	X	X	X	X	X	X	X	X
04-B01114-50010-A26	BH 2	UNKNOWN	Glass Bottle														
04-B01114-50011-A01	BH 3	UNKNOWN	250ml Sterile														
04-B01114-50011-A04	BH 3	UNKNOWN	Plastic Bottle + NaCl														
04-B01114-50011-A06	BH 3	UNKNOWN	Plastic Bottle + NaCl														
04-B01114-50011-A10	BH 3	UNKNOWN	Plastic Bottle	X	X	X	X	X	X	X	X	X	X	X	X	X	X
04-B01114-50011-A26	BH 3	UNKNOWN	Glass Bottle														
04-B01114-50012-A01	BH 4A	UNKNOWN	250ml Sterile														
04-B01114-50012-A04	BH 4A	UNKNOWN	Plastic Bottle + NaCl														
04-B01114-50012-A06	BH 4A	UNKNOWN	Plastic Bottle + NaCl														
04-B01114-50012-A10	BH 4A	UNKNOWN	Plastic Bottle	X	X	X	X	X	X	X	X	X	X	X	X	X	X
04-B01114-50012-A26	BH 4A	UNKNOWN	Glass Bottle														
04-B01114-50013-A01	BH 5	UNKNOWN	250ml Sterile														
04-B01114-50013-A04	BH 5	UNKNOWN	Plastic Bottle + NaCl														

Notes : NUMERIC VALUES INDICATE ADDITIONAL SCHEDULING

Checked By 





# ALcontrol Laboratories Ireland

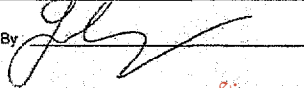
## Test Schedule

Ref Number: 04-B01114/01  
 Client: Enviro (Dublin)  
 Date of Receipt: 10/03/2004

Sample Type: WATER  
 Location:  
 Client Contact: Enda Hoey  
 Client Ref: TH 071

ALcontrol Reference	Sample Identity	Other ID	P / V	Detection Method												IR	KONE	KONE	KONE
				UKAS Accredited	ICP	ICP USN	ICP USN	ICP USN	ICP USN	ICP USN	ICP USN	ICP USN	ICP USN	ICP USN	ICP USN				
				Disolved Phosphorus	Disolved Cadmium Low Level	Disolved Chromium Low Level	Disolved Copper Low Level	Disolved Iron Low Level	Disolved Lead Low Level	Disolved Manganese Low Level	Disolved Nickel Low Level	Disolved Silver Low Level	Disolved Zinc Low Level	Total Organic Carbon	Chloride	Fluoride	Sulphate		
04-B01114-S0013-A08	BH 5	UNKNOWN	Plastic Bottle + N200	X	X	X	X	X	X	X	X	X	X	X	X	X	X		
04-B01114-S0013-A09	BH 5	UNKNOWN	Plastic Bottle + N200	X	X	X	X	X	X	X	X	X	X	X	X	X	X		
04-B01114-S0013-A10	BH 5	UNKNOWN	Glass Bottle	X	X	X	X	X	X	X	X	X	X	X	X	X	X		
04-B01114-S0014-A01	BH 6	UNKNOWN	250ml Sterile	X	X	X	X	X	X	X	X	X	X	X	X	X	X		
04-B01114-S0014-A04	BH 6	UNKNOWN	Plastic Bottle + N200	X	X	X	X	X	X	X	X	X	X	X	X	X	X		
04-B01114-S0014-A05	BH 6	UNKNOWN	Plastic Bottle + N200	X	X	X	X	X	X	X	X	X	X	X	X	X	X		
04-B01114-S0014-A06	BH 6	UNKNOWN	Plastic Bottle + N200	X	X	X	X	X	X	X	X	X	X	X	X	X	X		
04-B01114-S0014-A07	BH 6	UNKNOWN	Plastic Bottle	X	X	X	X	X	X	X	X	X	X	X	X	X	X		
04-B01114-S0014-A26	BH 6	UNKNOWN	Glass Bottle	X	X	X	X	X	X	X	X	X	X	X	X	X	X		
04-B01114-S0015-A01	BH 7	UNKNOWN	250ml Sterile	X	X	X	X	X	X	X	X	X	X	X	X	X	X		
04-B01114-S0015-A04	BH 7	UNKNOWN	Plastic Bottle + N200	X	X	X	X	X	X	X	X	X	X	X	X	X	X		
04-B01114-S0015-A05	BH 7	UNKNOWN	Plastic Bottle + N200	X	X	X	X	X	X	X	X	X	X	X	X	X	X		
04-B01114-S0015-A10	BH 7	UNKNOWN	Plastic Bottle	X	X	X	X	X	X	X	X	X	X	X	X	X	X		
04-B01114-S0015-A26	BH 7	UNKNOWN	Glass Bottle	X	X	X	X	X	X	X	X	X	X	X	X	X	X		
04-B01114-S0016-A01	BH 8	UNKNOWN	250ml Sterile	X	X	X	X	X	X	X	X	X	X	X	X	X	X		
04-B01114-S0016-A04	BH 8	UNKNOWN	Plastic Bottle + N200	X	X	X	X	X	X	X	X	X	X	X	X	X	X		
04-B01114-S0016-A05	BH 8	UNKNOWN	Plastic Bottle + N200	X	X	X	X	X	X	X	X	X	X	X	X	X	X		

Notes : NUMERIC VALUES INDICATE ADDITIONAL SCHEDULING

Checked By: 

Printed at 10:05 on 15/03/2004

\* SUBCONTRACTED TO OTHER LABORATORY / \*\* SAMPLES ANALYSED AT THE CHESTER LABORATORY

Page 5 of 13

ENVIRONMENTAL IMPACT STATEMENT

# ALcontrol Laboratories Ireland

## Test Schedule

Ref Number: 04-B01114/01  
 Client: Enviro (Dublin)  
 Date of Receipt: 10/03/2004

Sample Type: WATER  
 Location:  
 Client Contact: Enda Hoey  
 Client Ref: TH 071

Sample Identity	Other ID	P / V	Detection Method												IR	KONE	KONE	KONE
			UKAS Accredited	ICP	ICP USN	ICP USN	ICP USN	ICP USN	ICP USN	ICP USN	ICP USN	ICP USN	ICP USN	ICP USN				
			Disolved Phosphorus	Disolved Cadmium Low Level	Disolved Chromium Low Level	Disolved Copper Low Level	Disolved Iron Low Level	Disolved Lead Low Level	Disolved Manganese Low Level	Disolved Nickel Low Level	Disolved Silver Low Level	Disolved Zinc Low Level	Total Organic Carbon	Chloride	Fluoride	Sulphate		
BH 8	UNKNOWN	Plastic Bottle	X	X	X	X	X	X	X	X	X	X	X	X	X	X		
BH 8	UNKNOWN	Glass Bottle	X	X	X	X	X	X	X	X	X	X	X	X	X	X		
BH 9A	UNKNOWN	250ml Sterile	X	X	X	X	X	X	X	X	X	X	X	X	X	X		
BH 9A	UNKNOWN	Plastic Bottle + N200	X	X	X	X	X	X	X	X	X	X	X	X	X	X		
BH 9A	UNKNOWN	Plastic Bottle + N200	X	X	X	X	X	X	X	X	X	X	X	X	X	X		
BH 9A	UNKNOWN	Plastic Bottle + N200	X	X	X	X	X	X	X	X	X	X	X	X	X	X		
BH 9A	UNKNOWN	Plastic Bottle	X	X	X	X	X	X	X	X	X	X	X	X	X	X		
BH 9A	UNKNOWN	Glass Bottle	X	X	X	X	X	X	X	X	X	X	X	X	X	X		
SW 4A	UNKNOWN	On Hold																
SW 4A	UNKNOWN	Plastic Bottle	X	X	X	X	X	X	X	X	X	X	X	X	X	X		
SW 4A	UNKNOWN	Glass Bottle	X	X	X	X	X	X	X	X	X	X	X	X	X	X		

For inspection purposes only. Copyright owner required for any other use.

A10-4-9

## ALcontrol Laboratories Ireland Test Schedule

Ref Number: 04-B01114/01  
Client: Enviros (Dublin)  
Date of Receipt: 10/03/2004

Sample Type: WATER  
Location:  
Client Contact: Enda Hoey  
Client Ref: TH 071

Detection Method			KONE	METER	METER	METER	SPECTRO	SPECTRO	SPECTRO	TITRATION
UKAS Accredited			✓	✓	✓	✓	✓	✓	✓	✓
Sample Identity	Other ID	P / V	Total Oxidised Nitrogen	Conductivity	Dissolved Oxygen	pH (Liquid)	Ammoniacal Nitrogen	COD Settled	Total Cyanide	Total Alkalinity
BH 2	UNKNOWN	250ml Sterile								
BH 2	UNKNOWN	Plastic Bottle + 1000ml					X			
BH 2	UNKNOWN	Plastic Bottle + 1000ml								
BH 2	UNKNOWN	Plastic Bottle + 1000ml								
BH 2	UNKNOWN	Plastic Bottle	X	X	X	X			X	
BH 2	UNKNOWN	Glass Bottle								
BH 3	UNKNOWN	250ml Sterile								
BH 3	UNKNOWN	Plastic Bottle + 1000ml					X			
BH 3	UNKNOWN	Plastic Bottle + 1000ml								
BH 3	UNKNOWN	Plastic Bottle	X	X	X	X			X	
BH 3	UNKNOWN	Glass Bottle								
BH 4A	UNKNOWN	250ml Sterile								
BH 4A	UNKNOWN	Plastic Bottle + 1000ml					X			
BH 4A	UNKNOWN	Plastic Bottle + 1000ml								
BH 4A	UNKNOWN	Plastic Bottle	X	X	X	X			X	
BH 4A	UNKNOWN	Glass Bottle								
BH 5	UNKNOWN	250ml Sterile								
BH 5	UNKNOWN	Plastic Bottle + 1000ml								

ENVIRONMENTAL IMPACT STATEMENT

For inspection purposes only  
Consent of copyright owner required for any other use.

## ALcontrol Laboratories Ireland Test Schedule

Ref Number: 04-B01114/01  
Client: Enviros (Dublin)  
Date of Receipt: 10/03/2004

Sample Type: WATER  
Location:  
Client Contact: Enda Hoey  
Client Ref: TH 071

Detection Method			KONE	METER	METER	METER	SPECTRO	SPECTRO	SPECTRO	TITRATION
UKAS Accredited			✓	✓	✓	✓	✓	✓	✓	✓
ALcontrol Reference	Sample Identity	Other ID	Total Oxidised Nitrogen	Conductivity	Dissolved Oxygen	pH (Liquid)	Ammoniacal Nitrogen	COD Settled	Total Cyanide	Total Alkalinity
04-B01114-50013-009	BH 5	UNKNOWN	Plastic Bottle + 1000ml						X	
04-B01114-50013-009	BH 5	UNKNOWN	Plastic Bottle + 1000ml							
04-B01114-50013-010	BH 5	UNKNOWN	Plastic Bottle	X	X	X	X		X	
04-B01114-50013-026	BH 5	UNKNOWN	Glass Bottle							
04-B01114-50014-001	BH 6	UNKNOWN	250ml Sterile							
04-B01114-50014-001	BH 6	UNKNOWN	Plastic Bottle + 1000ml				X			
04-B01114-50014-001	BH 6	UNKNOWN	Plastic Bottle + 1000ml							
04-B01114-50014-006	BH 6	UNKNOWN	Plastic Bottle + 1000ml				X		X	
04-B01114-50014-010	BH 6	UNKNOWN	Plastic Bottle	X	X	X			X	
04-B01114-50014-026	BH 6	UNKNOWN	Glass Bottle							
04-B01114-50015-001	BH 7	UNKNOWN	250ml Sterile							
04-B01114-50015-001	BH 7	UNKNOWN	Plastic Bottle + 1000ml				X			
04-B01114-50015-008	BH 7	UNKNOWN	Plastic Bottle + 1000ml						X	
04-B01114-50015-010	BH 7	UNKNOWN	Plastic Bottle	X	X	X	X		X	
04-B01114-50015-026	BH 7	UNKNOWN	Glass Bottle							
04-B01114-50016-001	BH 8	UNKNOWN	250ml Sterile							
04-B01114-50016-001	BH 8	UNKNOWN	Plastic Bottle + 1000ml				X			
04-B01114-50016-006	BH 8	UNKNOWN	Plastic Bottle + 1000ml						X	
04-B01114-50016-008	BH 8	UNKNOWN	Plastic Bottle + 1000ml							

Notes : NUMERIC VALUES INDICATE ADDITIONAL SCHEDULING

Checked By

**ALcontrol Laboratories Ireland**  
Test Schedule

Ref Number: 04-B01114/01  
Client: Enviro (Dublin)  
Date of Receipt: 10/03/2004

Sample Type: WATER  
Location:  
Client Contact: Enda Hoey  
Client Ref: TH 071

ALcontrol Reference	Sample Identity	Other ID	P / V	Detection Method											
				KONE	METER	METER	METER	SPECTRO	SPECTRO	SPECTRO	FITRATION				
				Total Oxidised Nitrogen	Conductivity	Dissolved Oxygen	pH (Liquid)	Ammoniacal Nitrogen	COD Salited	Total Cyanide	Total Alkalinity				
04-B01114-S0016-A10	BH 8	UNKNOWN	Plastic Bottle	X	X	X	X				X				
04-B01114-S0016-A26	BH 8	UNKNOWN	Glass Bottle	X	X	X	X				X				
04-B01114-S0017-A01	BH 9A	UNKNOWN	250ml Sterile												
04-B01114-S0017-A04	BH 9A	UNKNOWN	Plastic Bottle + neck												
04-B01114-S0017-A06	BH 9A	UNKNOWN	Plastic Bottle + neck												
04-B01114-S0017-A26	BH 9A	UNKNOWN	Plastic Bottle + neck												
04-B01114-S0017-A10	BH 9A	UNKNOWN	Glass Bottle	X	X	X	X				X				
04-B01114-S0017-A26	BH 9A	UNKNOWN	Glass Bottle	X	X	X	X				X				
04-B01114-S0018-A01	SW 4A	UNKNOWN	Plastic Bottle + neck	On Hold											
04-B01114-S0018-A02	SW 4A	UNKNOWN	Plastic Bottle	X	X	X	X	X	X		X				
04-B01114-S0018-A17	SW 4A	UNKNOWN	Glass Bottle	X	X	X	X				X				

Notes : NUMERIC VALUES INDICATE ADDITIONAL SCHEDULING

Checked By

Printed at 10:05 on 15/03/2004

\* SUBCONTRACTED TO OTHER LABORATORY / \*\* SAMPLES ANALYSED AT THE CHESTER LABORATORY

Page 10 of 13

ENVIRONMENTAL IMPACT STATEMENT

**ALcontrol Laboratories Ireland**  
Table Of Results

Ref Number: 04-B01114/01  
Client: Enviro (Dublin)  
Date of Receipt: 10/03/2004  
(of first sample)

Sample Type: WATER  
Location:  
Client Contact: Enda Hoey  
Client Ref: TH 071

ALcontrol Reference	Sample Identity	Other ID	Detection Method														
			5 DAY ATU	AA	AA	CV AA	Filtration	Filtration	FLUO PHOTO	FLUO PHOTO	GRAVIMETRIC	HPLC	ICP	ICP	ICP	ICP	
			BOD Unfiltered	Dissolved Asaric Low Level	Dissolved Selenium Low Level	Dissolved Mercury Low Level	Faecal Coliforms	Total Coliforms	Polarsium	Sodium	Total Solids	Total Phenols	Dissolved Barium	Dissolved Boron	Dissolved Calcium	Dissolved Magnesium	Dissolved Phosphorus
			mg/l	µg/l	µg/l	µg/l	cfu/100ml	cfu/100ml	mg/l	mg/l	mg/l	mg/l	mg/l	mg/l	mg/l	mg/l	mg/l
04-B01114-S0010	BH 2	UNKNOWN	<2	<2	<0.05	<1	5	0.4	8.2	440	<0.01	<0.05	<0.05	159.30	5.85	<0.05	
04-B01114-S0011	BH 3	UNKNOWN	<2	<2	<0.05	<1	8	0.4	7.3	397	<0.01	<0.05	<0.05	139.60	4.62	0.06	
04-B01114-S0012	BH 4A	UNKNOWN	<2	<2	<0.05	<1	20	0.6	7.5	442	<0.01	0.05	<0.05	138.80	4.45	<0.05	
04-B01114-S0013	BH 5	UNKNOWN	<2	<2	<0.05	<1	50	0.4	7.7	399	<0.01	0.08	<0.05	117.70	4.21	0.17	
04-B01114-S0014	BH 6	UNKNOWN	<2	<2	<0.05	<1	55	0.8	8.9	469	<0.01	<0.05	<0.05	158.40	5.71	0.06	
04-B01114-S0015	BH 7	UNKNOWN	<2	<2	<0.05	<1	10	1.0	8.5	478	0.01	<0.05	<0.05	158.90	5.79	0.11	
04-B01114-S0016	BH 8	UNKNOWN	<2	<2	<0.05	<1	3	0.4	7.3	425	<0.01	0.10	<0.05	123.20	4.62	<0.05	
04-B01114-S0017	BH 9A	UNKNOWN	<2	<2	<0.05	<1	1	0.4	7.2	433	<0.01	0.05	<0.05	142.30	5.51	<0.05	
04-B01114-S0018	SW 4A	UNKNOWN	<2	<2	<0.05	<1	1	1.6	7.6	-	-	-	-	158.20	9.66	-	

Notes : METHOD DETECTION LIMITS ARE NOT ALWAYS ACHIEVABLE DUE TO VARIOUS CIRCUMSTANCES BEYOND OUR CONTROL

NDP = NO DETERMINATION POSSIBLE  
NFP = NO FIBRES PRESENT

Checked By Dylan Halpin

Printed at 16:14 on 26/03/2004

\* SUBCONTRACTED TO OTHER LABORATORY / \*\* SAMPLES ANALYSED AT THE CHESTER LABORATORY

Page 11 of 13

Interim  
 Validated

### ALcontrol Laboratories Ireland

#### Table Of Results

Ref Number: 04-B01114/01

Client: Enviro (Dublin)

Date of Receipt: 10/03/2004  
(of first sample)

Sample Type: WATER

Location:

Client Contact: Enda Hoey

Client Ref: TH 071

ALcontrol Reference	Sample Identity	Other ID	Detection Method														METER				
			Method Detection Limit																		
			UKAS Accredited																		
ICP USN	ICP USN	ICP USN	ICP USN	ICP USN	ICP USN	ICP USN	ICP USN	ICP USN	ICP USN	ICP USN	ICP USN	ICP USN	ICP USN	ICP USN	IR	KONE	KONE	KONE	KONE	METER	
<0.4µg/l	<1µg/l	<5µg/l	<1µg/l	<5µg/l	<1µg/l	<10µg/l	<10µg/l	<10µg/l	<5µg/l	<10µg/l	<10µg/l	<10µg/l	<10µg/l	<10µg/l	<2mg/l	<1mg/l	<0.1mg/l	<3mg/l	<0.3mg/l	<0.01-0.05µg/l	
			Dissolved Cadmium Low Level	Dissolved Chromium Low Level	Dissolved Copper Low Level	Dissolved Iron Low Level	Dissolved Lead Low Level	Dissolved Manganese Low Level	Dissolved Nickel Low Level	Dissolved Silver Low Level	Dissolved Zinc Low Level	Total Organic Carbon	Chloride	Fluoride	Sulphate	Total Oxidised Nitrogen as N	Conductivity				
µg/l	µg/l	µg/l	µg/l	µg/l	µg/l	µg/l	µg/l	µg/l	µg/l	µg/l	µg/l	mg/l	mg/l	mg/l	mg/l	mg/l	ms/cm				
04-B01114-S0010	BH 2	UNKNOWN	<0.4	<1	5	33	<5	91	27	<10	9	14	11	0.2	50	<0.3	0.216				
04-B01114-S0011	BH 3	UNKNOWN	<0.4	<1	1	149	<5	202	11	<10	<5	14	10	0.2	27	<0.3	0.559				
04-B01114-S0012	BH 4A	UNKNOWN	<0.4	<1	2	2411	<5	291	<10	<10	<5	62	10	0.3	<3	<0.3	0.554				
04-B01114-S0013	BH 5	UNKNOWN	<0.4	<1	8	5205	<5	320	<10	<10	<5	57	11	0.3	<3	<0.3	0.578				
04-B01114-S0015	BH 6	UNKNOWN	<0.4	<1	<1	490	<5	239	11	<10	<5	16	13	0.2	35	<0.3	0.736				
04-B01114-S0015	BH 7	UNKNOWN	<0.4	<1	<1	20	<5	107	13	<10	<5	58	11	0.2	46	<0.3	0.735				
04-B01114-S0016	BH 8	UNKNOWN	<0.4	<1	<1	4695	<5	478	<10	<10	<5	11	10	0.2	<3	<0.3	0.630				
04-B01114-S0017	BH 9A	UNKNOWN	<0.4	<1	<1	584	<5	232	<10	<10	<5	13	10	0.2	20	<0.3	0.680				
04-B01114-S0018	SW 4A	UNKNOWN	<0.4	<1	<1	9	<5	33	>10	>10	>10	7	14		37	2.1	0.751				

Notes: METHOD DETECTION LIMITS ARE NOT ALWAYS ACHIEVABLE DUE TO VARIOUS CIRCUMSTANCES BEYOND OUR CONTROL

NDP = NO DETERMINATION POSSIBLE

NFP = NO FIBRES PRESENT

Checked By Dylan Halpin Dylan Halpin

Printed at 16:14 on 28/03/2004

\* SUBCONTRACTED TO OTHER LABORATORY / \*\* SAMPLES ANALYSED AT THE CHESTER LABORATORY

Page 12 of 13

Interim  
 Validated

### ALcontrol Laboratories Ireland

#### Table Of Results

Ref Number: 04-B01114/01

Client: Enviro (Dublin)

Date of Receipt: 10/03/2004  
(of first sample)

Sample Type: WATER

Location:

Client Contact: Enda Hoey

Client Ref: TH 071

ALcontrol Reference	Sample Identity	Other ID	Detection Method						
			Method Detection Limit						
			UKAS Accredited						
METER	METER	SPECTRO	SPECTRO	SPECTRO	TITRATION				
<0.1mg/l	mg/l Units	<0.2mg/l	<15mg/l	<0.05mg/l	<1mg/l				
		Dissolved Oxygen	pH	Ammoniacal Nitrogen as N	COD Barium	Total Cyanide	Total Alkalinity as CaCO3		
mg/l	pH Units	mg/l	mg/l	mg/l	mg/l	mg/l			
04-B01114-S0010	BH 2	UNKNOWN	6.3	6.99	<0.2		<0.05	370	
04-B01114-S0011	BH 3	UNKNOWN	6.1	7.87	<0.2		<0.05	330	
04-B01114-S0012	BH 4A	UNKNOWN	6.2	6.69	3.5		<0.05	410	
04-B01114-S0013	BH 5	UNKNOWN	6.4	7.01	2.5		<0.05	320	
04-B01114-S0014	BH 6	UNKNOWN	6.8	6.85	<0.2		<0.05	398	
04-B01114-S0015	BH 7	UNKNOWN	6.6	7.00	<0.2		<0.05	370	
04-B01114-S0016	BH 8	UNKNOWN	5.8	7.04	4.0		<0.05	400	
04-B01114-S0017	BH 9A	UNKNOWN	6.7	6.75	0.5		<0.05	370	
04-B01114-S0018	SW 4A	UNKNOWN	6.6	7.62	<0.2	<15		400	

Notes: METHOD DETECTION LIMITS ARE NOT ALWAYS ACHIEVABLE DUE TO VARIOUS CIRCUMSTANCES BEYOND OUR CONTROL

NDP = NO DETERMINATION POSSIBLE

NFP = NO FIBRES PRESENT

Checked By Dylan Halpin Dylan Halpin

Printed at 16:14 on 28/03/2004

\* SUBCONTRACTED TO OTHER LABORATORY / \*\* SAMPLES ANALYSED AT THE CHESTER LABORATORY

Page 13 of 13

## APPENDIX

1. Results are expressed as mg/kg dry weight (dried at 35°C) on all soil analyses except for the following:  
Leach tests, hexavalent chrome, flash point, acid soluble sulphides, SVOC's TPH by IR and volatiles are expressed as mg/kg wet soil as received, although these are currently under review.  
Phenol, ammoniacal nitrogen and cyanide are performed on wet samples as received, but the results are expressed as mg/kg dry weight.
2. Samples will be run in duplicate upon request, but an additional charge may be incurred.
3. A sub sample of all samples received will be retained free of charge for two months for soils and one month for waters (sample size permitting), but may then be discarded unless we are instructed to the contrary. Once the initial period has expired, a storage charge will be applied for each month or part thereof until the client cancels the request for sample storage.
4. With respect to turnaround, we will always endeavour to meet client requirements wherever possible, but turnaround times cannot be absolutely guaranteed due to so many variables beyond our control.
5. We take responsibility for any test performed by sub-contractors (marked with an asterisk). We endeavour to use UKAS Accredited Laboratories, who either complete a quality questionnaire or are audited by ourselves. For some determinands there are no UKAS Accredited Laboratories, in this instance a laboratory with a known track record will be utilised.
6. Asbestos screen is done in-house on soils and if no fibres are found will be reported as NFD – no fibres detected. If asbestos is detected, then identification and quantification is carried out by ALcontrol Technichem. If a sample is suspected of containing asbestos, then drying and crushing will be suspended on that sample until the asbestos results is known. If asbestos is present, then no analysis requiring dry sample will be undertaken.
7. If no separate volatile sample is supplied by the client, the integrity of the data may be compromised if the laboratory is required to create a sub-sample from the bulk sample – similarly, if a headspace is present in the volatile sample.

8. NDP – No determination possible due to insufficient/unsuitable sample.
9. Metals in water are performed on a filtered sample, and therefore represent dissolved metals – total metals must be requested separately.
10. A table containing the date of analysis for each parameter is not routinely included with the report, but is available upon request.

For inspection purposes only.  
Consent of copyright owner required for any other use.



# ALcontrol Laboratories (Dublin)

18a Rosemount Business Park,  
Ballycolin,  
Dublin 11  
Ireland  
Tel +353 (0) 1 8829893  
Fax +353 (0) 1 8829895

## CERTIFICATE OF ANALYSIS

**Client:** Enviros (Dublin)  
Unit 4  
The Plaza  
Swords  
Co. Dublin  
Ireland



**Attention:** Eida Holey  
**Date:** 23 December, 2003  
**Our Reference:** 03-B04377  
**Your Reference:** TH071

**Location:**  
A total of 6 samples was received for analysis on Wednesday, 10 December 2003. We are pleased to enclose our final report, it was a pleasure to be of service to you, and we look forward to our continuing association.

**Signed:**  
*Ken Seally*  
Ken Seally  
Site Manager

**Compiled By:**  
*Maria Dolan*  
Maria Dolan

Job Number: DUB\_03\_B04377  
Printed at 09:34 on 13/01/2004

ALcontrol (Ireland) is a trading division of ALcontrol UK Limited.  
Registered Office: 5, Springfield Road, London, W8 5PS. Registered in England at: 1052291



ALcontrol Laboratories  
Page 1 of 7

### ALcontrol Laboratories Ireland Test Schedule

Ref Number: 03-B04377  
Client: Enviros (Dublin)  
Date of Receipt: 10/12/2003  
Turnaround: 7 days  
Sample Type: WATER  
Location: Enviros (Dublin)  
Client Contact: Eida Holey  
Client Ref: TH071

ALcontrol Reference	Sample Identity	Other ID	P / V	BOD Unfiltered	Dissolved Mercury Low Level	Potassium	Sodium	Dissolved Calcium	Dissolved Magnesium	Dissolved Iron Low Level	Dissolved Copper Low Level	Dissolved Chromium Low Level	Dissolved Lead Low Level	Dissolved Manganese Low Level	Dissolved Nickel Low Level	Dissolved Zinc Low Level
03-B04377-5000-461	SW 1	UNKONWN	Plastic Bottle	On Field	X											
03-B04377-5000-462	SW 2	UNKONWN	Glass Bottle	On Field												
03-B04377-5000-463	SW 1	UNKONWN	Plastic Bottle	On Field												
03-B04377-5000-464	SW 2	UNKONWN	Plastic Bottle	On Field												
03-B04377-5000-465	SW 1	UNKONWN	Glass Bottle	On Field												
03-B04377-5000-466	SW 2	UNKONWN	Plastic Bottle	On Field												
03-B04377-5000-467	SW 1	UNKONWN	Plastic Bottle	On Field												
03-B04377-5000-468	SW 2	UNKONWN	Glass Bottle	On Field												
03-B04377-5000-469	SW 1	UNKONWN	Plastic Bottle	On Field												
03-B04377-5000-470	SW 2	UNKONWN	Glass Bottle	On Field												
03-B04377-5000-471	SW 1	UNKONWN	Plastic Bottle	On Field												
03-B04377-5000-472	SW 2	UNKONWN	Glass Bottle	On Field												
03-B04377-5000-473	SW 1	UNKONWN	Plastic Bottle	On Field												
03-B04377-5000-474	SW 2	UNKONWN	Glass Bottle	On Field												
03-B04377-5000-475	SW 1	UNKONWN	Plastic Bottle	On Field												
03-B04377-5000-476	SW 2	UNKONWN	Glass Bottle	On Field												
03-B04377-5000-477	SW 1	UNKONWN	Plastic Bottle	On Field												
03-B04377-5000-478	SW 2	UNKONWN	Glass Bottle	On Field												
03-B04377-5000-479	SW 1	UNKONWN	Plastic Bottle	On Field												
03-B04377-5000-480	SW 2	UNKONWN	Glass Bottle	On Field												
03-B04377-5000-481	SW 1	UNKONWN	Plastic Bottle	On Field												
03-B04377-5000-482	SW 2	UNKONWN	Glass Bottle	On Field												
03-B04377-5000-483	SW 1	UNKONWN	Plastic Bottle	On Field												
03-B04377-5000-484	SW 2	UNKONWN	Glass Bottle	On Field												
03-B04377-5000-485	SW 1	UNKONWN	Plastic Bottle	On Field												
03-B04377-5000-486	SW 2	UNKONWN	Glass Bottle	On Field												
03-B04377-5000-487	SW 1	UNKONWN	Plastic Bottle	On Field												
03-B04377-5000-488	SW 2	UNKONWN	Glass Bottle	On Field												
03-B04377-5000-489	SW 1	UNKONWN	Plastic Bottle	On Field												
03-B04377-5000-490	SW 2	UNKONWN	Glass Bottle	On Field												

Checked By: *[Signature]*

Notes: NUMERIC VALUES INDICATE ADDITIONAL SCHEDULES



**ALcontrol Laboratories Ireland**  
Test Schedule

Ref Number: 03-B04377  
Client: Enviros (Dublin)  
Date of Receipt: 10/12/2003  
Turnaround: 7 days

Sample Type: WATER  
Location:  
Client Contact: Enda Hoey  
Client Ref: TH071

Alcontrol Reference	Sample Identity	Other ID	P / V	Detection Method UKAS Accredited													
				5 DAY ATU	CV AA	FRANK PHOTO	FLAME PHOTO	ICP	ICP	ICP USN	ICP USN	ICP USN	ICP USN	ICP USN	ICP USN	ICP USN	
				BOD Unfiltered	Disolved Mercury Low Level	Polysulfur	Sodium	Disolved Calcium	Disolved Magnesium	Disolved Calcium Low Level	Disolved Chromium Low Level	Disolved Copper Low Level	Disolved Iron Low Level	Disolved Lead Low Level	Disolved Manganese Low Level	Disolved Nickel Low Level	Disolved Zinc Low Level
03-B04377-50009-A01	SW 6	UNKNOWN	Plastic Bottle	On Hold													
03-B04377-50009-A02	SW 6	UNKNOWN	Glass Bottle		X												
03-B04377-50009-A03	SW 6	UNKNOWN	Plastic Bottle			X	X	X	X	X	X	X	X	X	X	X	X
03-B04377-50009-A07	SW 6	UNKNOWN	Plastic Bottle	X													

Notes : NUMERIC VALUES INDICATE ADDITIONAL SCHEDULING

Checked By

Printed at 15:16 on 10/12/2003

\* SUBCONTRACTED TO OTHER LABORATORY / \*\* SAMPLES ANALYSED AT THE CHESTER LABORATORY

Page 3 of 7

**ALcontrol Laboratories Ireland**  
Test Schedule

Ref Number: 03-B04377  
Client: Enviros (Dublin)  
Date of Receipt: 10/12/2003  
Turnaround: 7 days

Sample Type: WATER  
Location:  
Client Contact: Enda Hoey  
Client Ref: TH071

Alcontrol Reference	Sample Identity	Other ID	P / V	Detection Method UKAS Accredited										
				IR	KONE	KONE	KONE	METER	METER	METER	SPECTRO	SPECTRO	TITRATION	
				Total Organic Carbon	Chloride	Sulfate	Total Oxidized Nitrogen	Conductivity	Disolved Oxygen	pH (Liquid)	Ammoniacal Nitrogen	COD sealed	Total Alkalinity	
03-B04377-50004-A01	SW 1	UNKNOWN	Plastic Bottle	On Hold										
03-B04377-50004-A02	SW 1	UNKNOWN	Glass Bottle	X										
03-B04377-50004-A03	SW 1	UNKNOWN	Plastic Bottle											
03-B04377-50004-A07	SW 1	UNKNOWN	Plastic Bottle		X	X	X	X	X	X	X	X	X	
03-B04377-50005-A01	SW 2	UNKNOWN	Plastic Bottle	On Hold										
03-B04377-50005-A02	SW 2	UNKNOWN	Glass Bottle	X										
03-B04377-50005-A03	SW 2	UNKNOWN	Plastic Bottle		X	X	X	X	X	X	X	X	X	
03-B04377-50005-A07	SW 2	UNKNOWN	Plastic Bottle											
03-B04377-50005-A01	SW 3	UNKNOWN	Plastic Bottle	On Hold										
03-B04377-50005-A02	SW 3	UNKNOWN	Glass Bottle	X										
03-B04377-50005-A03	SW 3	UNKNOWN	Plastic Bottle											
03-B04377-50005-A07	SW 3	UNKNOWN	Plastic Bottle		X	X	X	X	X	X	X	X	X	
03-B04377-50007-A01	SW 4	UNKNOWN	Plastic Bottle	On Hold										
03-B04377-50007-A02	SW 4	UNKNOWN	Glass Bottle	X										
03-B04377-50007-A03	SW 4	UNKNOWN	Plastic Bottle											
03-B04377-50007-A07	SW 4	UNKNOWN	Plastic Bottle		X	X	X	X	X	X	X	X	X	
03-B04377-50008-A01	SW 5	UNKNOWN	Plastic Bottle	On Hold										
03-B04377-50008-A02	SW 5	UNKNOWN	Glass Bottle	X										
03-B04377-50008-A03	SW 5	UNKNOWN	Plastic Bottle											
03-B04377-50008-A07	SW 5	UNKNOWN	Plastic Bottle		X	X	X	X	X	X	X	X	X	

Notes : NUMERIC VALUES INDICATE ADDITIONAL SCHEDULING

Checked By

Printed at 15:16 on 10/12/2003

\* SUBCONTRACTED TO OTHER LABORATORY / \*\* SAMPLES ANALYSED AT THE CHESTER LABORATORY

Page 4 of 7

ALcontrol Laboratories Ireland  
Test Schedule

Ref Number: 03-B04377

Client: Enviro (Dublin)

Date of Receipt: 10/12/2003

Turnaround: 7 days

Sample Type: WATER

Location:

Client Contact: Enda Hoey

Client Ref: TH071

ALcontrol Reference	Sample Identity	Other ID	P / V	Detection Method									
				IR	KONE	KONE	KONE	METER	METER	METER	SPECTRO	SPECTRO	TITRATION
				Total Organic Carbon	Chloride	Sulphate	Total Dissolved Nitrogen	Conductivity	Dissolved Oxygen	pH (liquid)	Ammoniacal Nitrogen	COD sealed	Total Alkalinity
03-B04377-50009-A01	SW 6	UNKNOWN	Plastic Bottle	On Hold	-	-	-	-	-	-	-	-	-
03-B04377-50009-A02	SW 6	UNKNOWN	Glass Bottle	X	-	-	-	-	-	-	-	-	-
03-B04377-50009-A05	SW 6	UNKNOWN	Plastic Bottle	-	-	-	-	-	-	-	X	-	-
03-B04377-50009-A07	SW 6	UNKNOWN	Plastic Bottle	-	X	X	X	X	X	X	-	X	X

Notes : NUMERIC VALUES INDICATE ADDITIONAL SCHEDULING

Checked By 

Printed at 15:16 on 10/12/2003

\* SUBCONTRACTED TO OTHER LABORATORY / \*\* SAMPLES ANALYSED AT THE CHESTER LABORATORY

Page 5 of 7

ALcontrol Laboratories Ireland  
Table Of Results

Ref Number: 03-B04377

Client: Enviro (Dublin)

Date of Receipt: 10/12/03

(of first sample)

Sample Type: WATER

Location:

Client Contact: Enda Hoey

Client Ref: TH071

ALcontrol Reference	Sample Identity	Other ID	Detection Method													IR		
			5 DAY ATU	CV AA	FLAME PHOTO	FLAME PHOTO	ICP	ICP	ICP USN	ICP USN	ICP USN	ICP USN	ICP USN	ICP USN	ICP USN			
			Method Detection Limit	<2mg/l	<0.05ug/l	<0.2mg/l	<0.2mg/l	<0.05mg/l	<0.05mg/l	<0.4ug/l	<1ug/l	<5ug/l	<1ug/l	<5ug/l	<1ug/l	<10ug/l	<5ug/l	<2mg/l
			UKAS Accredited	✓				✓	✓				✓					
			BOD Unfiltered	mg/l	ug/l	mg/l	mg/l	ug/l	ug/l	ug/l	ug/l	ug/l	ug/l	ug/l	ug/l	ug/l	ug/l	mg/l
03-B04377-50004	SW 1	UNKNOWN	4	0.06	3.4	7.8	174.30	9.56	<0.4	1	1	13	5	68	>10	>5	>2	
03-B04377-50005	SW 2	UNKNOWN	3	0.05	3.0	7.8	168.90	9.88	<0.4	1	1	26	5	57	>10	>5	>11	
03-B04377-50006	SW 3	UNKNOWN	6	0.05	1.8	7.8	155.60	7.31	<0.4	1	1	51	5	33	>10	>5	>19	
03-B04377-50007	SW 4	UNKNOWN	2	0.05	1.8	8.1	173.20	8.54	<0.4	2	2	12	5	58	>10	>5	>10	
03-B04377-50008	SW 5	UNKNOWN	5	0.05	1.8	7.8	160.80	7.41	<0.4	1	1	21	5	18	>10	>5	>16	
03-B04377-50009	SW 6	UNKNOWN	6	0.05	1.0	15.4	66.95	2.39	<0.4	1	1	258	5	6	>10	>5	>37	

Notes : METHOD DETECTION LIMITS ARE NOT ALWAYS ACHIEVABLE DUE TO VARIOUS CIRCUMSTANCES BEYOND OUR CONTROL

NDP = NO DETERMINATION POSSIBLE  
NFP = NO FIBRES PRESENT

Checked By  Marie Dolan

Printed at 12:57 on 23/12/03

\* SUBCONTRACTED TO OTHER LABORATORY / \*\* SUBCONTRACTED TO ALCONTROL CHESTER

Page 6 of 7



**ALcontrol Laboratories Ireland**  
Table Of Results

Interim  
 Validated

Ref Number: 03-B04377  
Client: Enviros (Dublin)  
Date of Receipt: 10/12/03  
(of first sample)

Sample Type: WATER  
Location:  
Client Contact: Enda Hoey  
Client Ref: TH071

Alcontrol Reference	Sample Identity	Other ID	KONE		KONE	METER	METER	METER	SPECTRO	SPECTRO	TITRATION
			<1mg/l	<3mg/l	<0.3mg/l	0.01 to 0.05 cm	<0.1mg/l	mpH Units	<0.2mg/l	<15mg/l	<1mg/l
UKAS Accredited											
			Chloride	Sulphate	Total Oxidised Nitrogen as N	Conductivity	Dissolved Oxygen	pH	Ammoniacal Nitrogen as N	COD Sulfide	Total Alkalinity as CaCO3
			mg/l	mg/l	mg/l	ms/cm	mg/l	pH Units	mg/l	mg/l	mg/l
03-B04377-S0004	SW 1	UNKNOWN	17	33	2.1	0.728	5.9	7.81	<0.2	<15	400
03-B04377-S0005	SW 2	UNKNOWN	15	41	1.9	0.712	7.2	7.39	<0.2	<15	380
03-B04377-S0006	SW 3	UNKNOWN	14	69	3.3	0.439	7.4	7.45	<0.2	29	340
03-B04377-S0007	SW 4	UNKNOWN	15	49	1.0	0.763	5.9	7.79	<0.2	<15	390
03-B04377-S0008	SW 5	UNKNOWN	15	84	2.1	0.662	5.5	7.59	<0.2	80	320
03-B04377-S0009	SW 6	UNKNOWN	13	5	1.5	0.348	8.2	6.96	<0.2	140	140

Notes: METHOD DETECTION LIMITS ARE NOT ALWAYS ACHIEVABLE DUE TO VARIOUS CIRCUMSTANCES BEYOND OUR CONTROL

NDP = NO DETERMINATION POSSIBLE

NFP = NO FIBRES PRESENT

Checked By: Marie Dolan

Printed at 12:57 on 23/1/2003

\* SUBCONTRACTED TO OTHER LABORATORY / \*\* SUBCONTRACTED TO ALCONTROL CHESTER

Page 7 of 7

For inspection purposes only  
Consent of copyright owner required for any other use.

APPENDIX

1. Results are expressed as mg/kg dry weight unless otherwise stated, excluding analyses in (2) below.
2. Leach tests, cyanide, phenols by MS, hexavalent chrome, flash point, acid soluble sulphides, TPH by IR and volatiles are performed on wet soil as received, and results are expressed as mg/kg of wet soil or mg/l of leachate of specified leach test. Ammoniacal nitrogen and total phenols by HPLC are performed on wet sample but are then re-calculated and expressed as mg/kg of dry soil.
3. ICP metals results are analysed using a screening program and the data is accurate to within 20%.
4. The majority of analyses are run to an accuracy of 10%, but this may be improved upon if legally defensible data is required.
5. A sub sample of all samples received will be retained free of charge for one month (sample size permitted), but will then be discarded unless we are instructed to the contrary. Once the initial period has expired, a storage charge will be applied for each month or part thereof until the client cancels the request.
6. With respect to turnaround, we will always endeavour to meet client requirements wherever possible, but the turnaround times cannot be absolutely guaranteed due to so many variables beyond our control.
7. Please note that we take no responsibility for any test performed by sub-contractors (marked with an asterisk).
8. Asbestos screen is done in-house on soils and if no fibres are found will be reported as NFP-no fibres present. If asbestos is detected then identification and quantifications is carried out by sub-contractor. If a sample is suspected of containing asbestos then drying and crushing will be suspended on the sample until the asbestos result is known. If asbestos is present, then no analysis requiring dry sampling will be undertaken.
9. NDP-No determination possible due to insufficient / unsuitable sample.