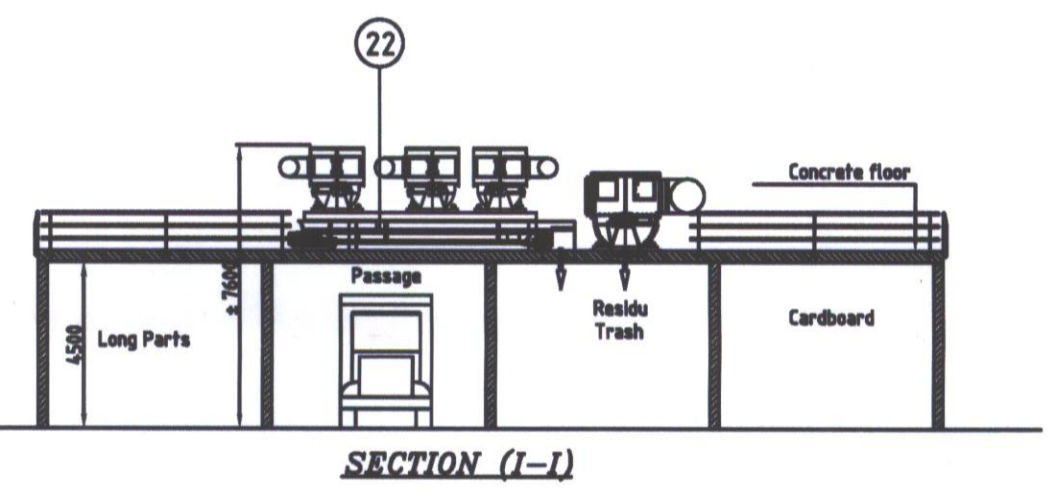
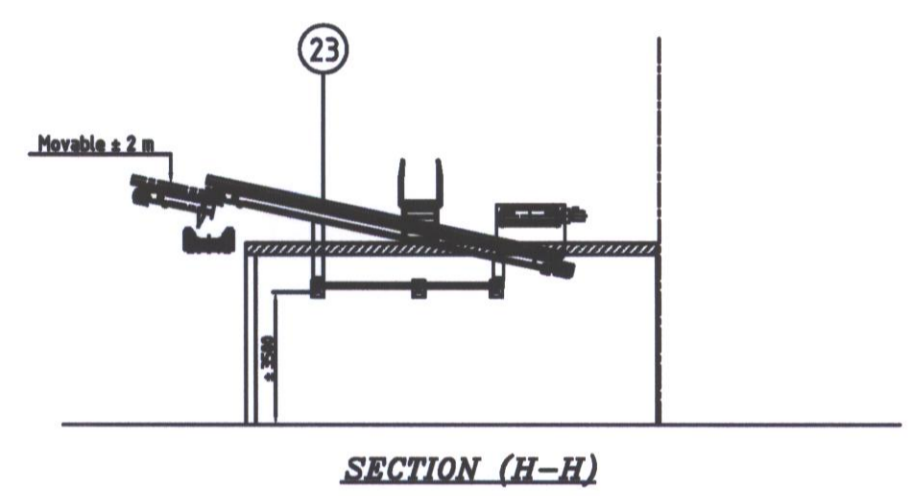
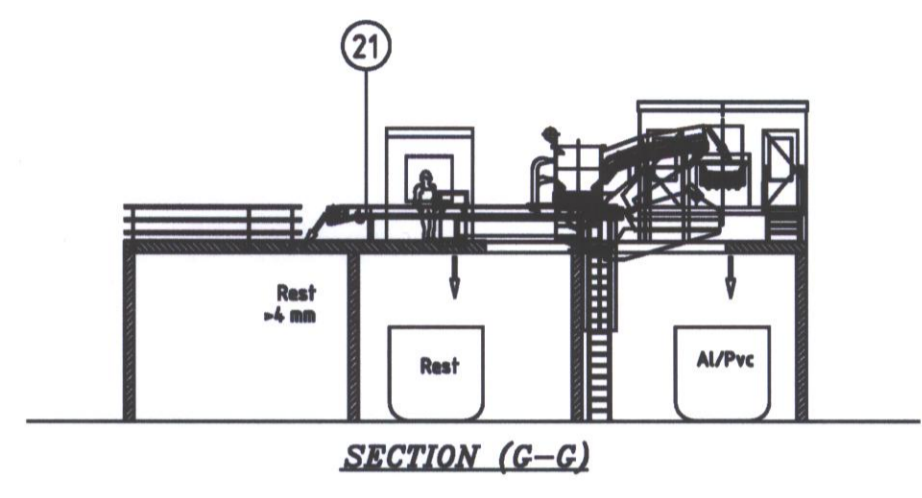
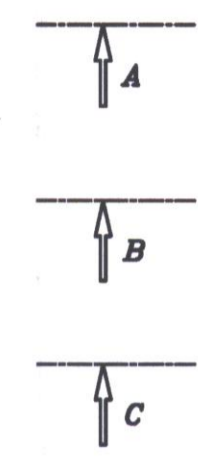
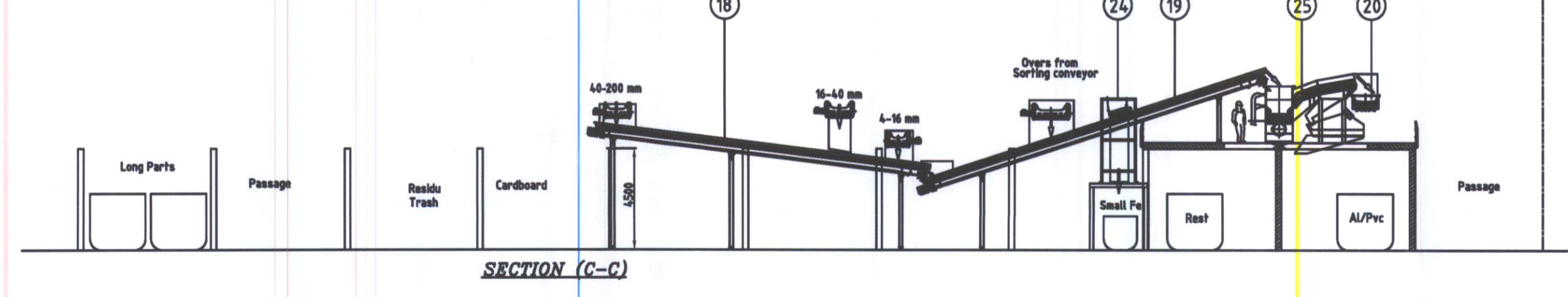
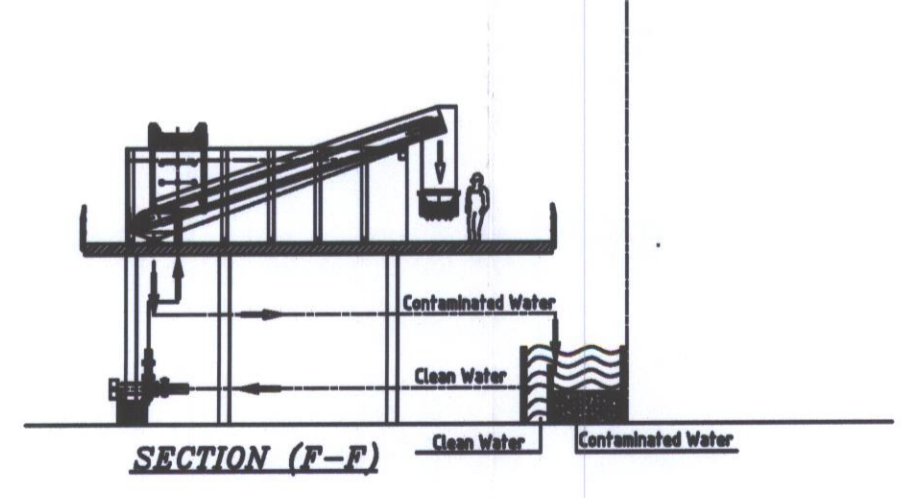
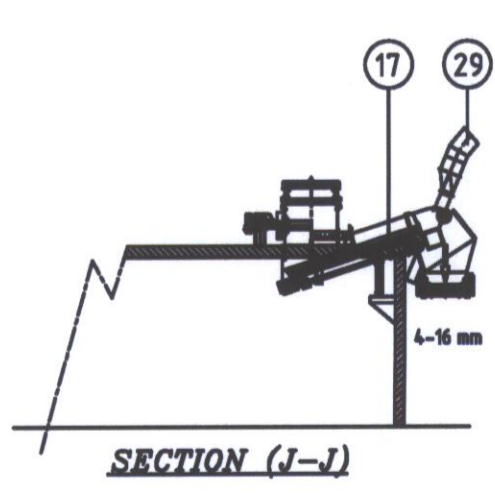
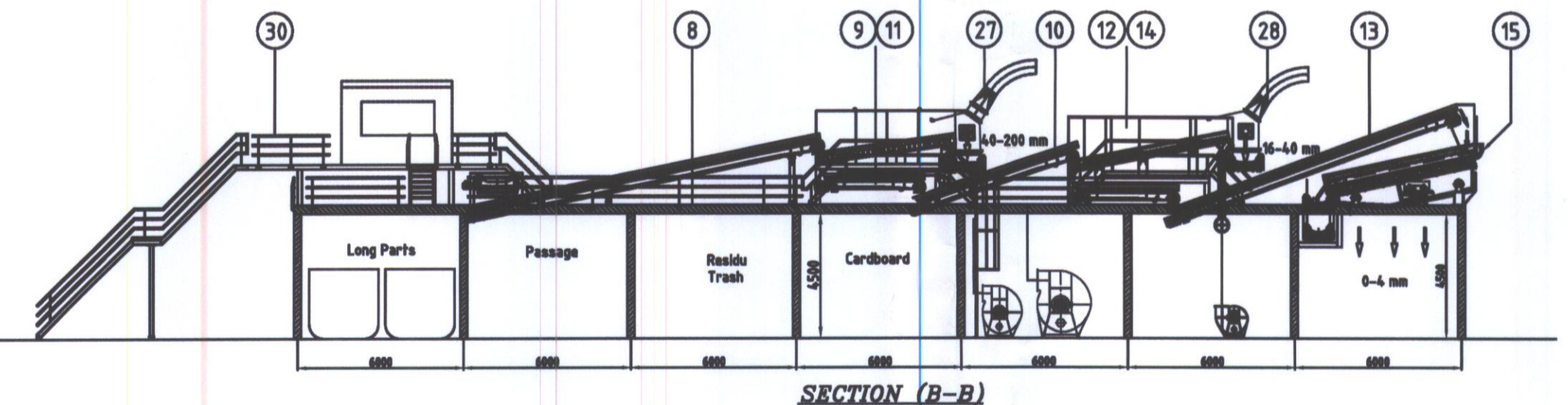
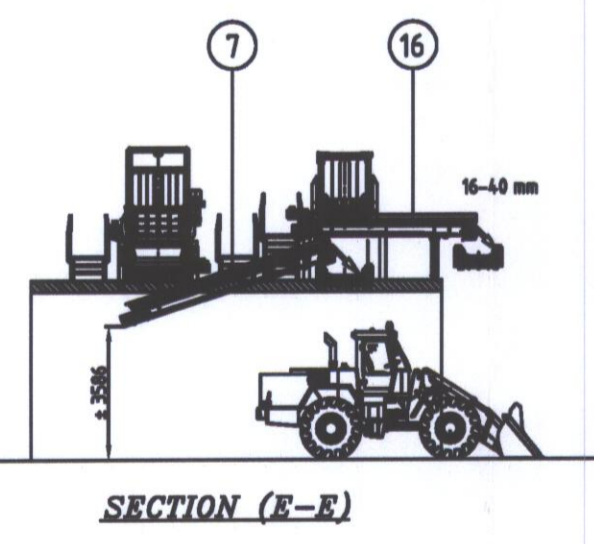
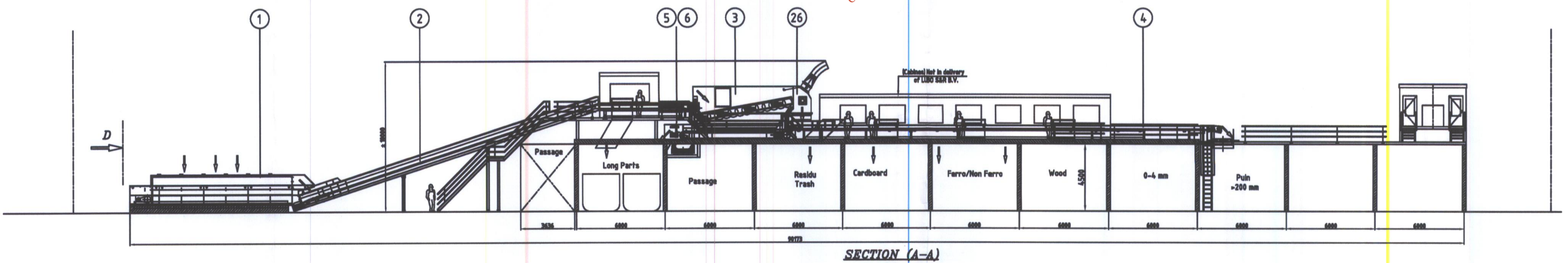


All foundations, concrete bunkers, walls etc. by Customer



ENVIRONMENTAL PROTECTION
AGENCY WASTE LICENSING
RECEIVED
24 DEC 2004
INITIALS.....

1. Vibrating feeder 1400 VF 10000
2. Incline conveyor 1400 RB 18° - 21500/6500
3. Starscreen 1440 - 6500/660
4. Sorting conveyor 1400 SB - 29000
5. Conveyor under starscreen 1400 RB - 6500
6. Long parts separator
7. Conveyor 1200 TB 18° - 5500
8. Conveyor 1200 TB 12° - 13000
9. Starscreen 1240 - 5000/235
10. Conveyor 1200 TB 19° - 6000
11. Conveyor under starscreen 1200 TB - 3500
12. Starscreen 1240 - 6000/165
13. Conveyor 1200 TB 20° - 10500
14. Conveyor under starscreen 1200 TB - 3500
15. Vibrating Flex-Deck screen
16. Conveyor 1000 TB - 4500 (2x)
17. Conveyor 1000 TB 18° - 3500
18. Conveyor 1000 TB - 7° - 15000
19. Conveyor 1000 TB 18° - 16000
20. Sorting conveyor 1000 SB - 9500
21. Sorting conveyor 1000 SB - 7500
22. Conveyor 1200 GRB - 6500
23. Conveyor 1400 TB 12° - 9500 (Movable)
24. Magnet with support
25. Water separator
26. Air Separation unit
27. Air Separation unit
28. Air Separation unit
29. Air Separation unit
30. Steelconstruction with walkways and stairs



Date:	Amer. proj.		LUBO Screening & Recycling Systems B.V. Phileas Foggstraat 85 7825 AW Emmen P.O. Box 2222 7801 CE Emmen Tel.: +31 591 668080 Fax: +31 591 668088 E-Mail: info@Lubo.nl Internet: www.Lubo.nl								
Weight:	.000		Scale:	1: 200	Drawn:	FC	Date:	07/07/2004	Checked:		Orig. Form:
Title:		Sorting Installation		Dwg.no.:	994.0199B		A1				
This drawing is the exclusive property of Lubo Screening & Recycling Systems B.V. and may not be copied or duplicated in whole or in part, or communicated to third parties without the written permission of this company.											