

## 10. EMISSIONS TO SEWER

### 10.1 General

The facility will be connected to the Cork Council Sanitary Sewer and the Cork County Council storm water sewer, which are located in the road which runs along the northern site boundary. There will be two connections to each sewer. There will be a connection to the storm water sewer and a connection to the sanitary sewer to serve the waste transfer station, administration building and community recycling park and a separate connection to each sewer from the waste to energy plant.

### 10.2 Process Waste Water

There will be no process wastewater emissions from the facility. All process waste waters from the waste to energy plant, such as boiler blow down, boiler water treatment reject water and scrubber water will be collected and reused in the evaporating spray towers. Process wastewaters will not be generated in the waste transfer station.

### 10.3 Sanitary Effluent Emissions

The only emissions to the sanitary sewer will be the effluent from the on site packaged sewage treatment plants. There will be two plants, one of these will serve the waste to energy plant and one will serve the waste transfer station and the administration building. It is not proposed to monitor these emissions.

### 10.4 Storm Water

The storm water drainage systems for the facility are described in section 15.5.

### 10.5 List of emission points to sewer

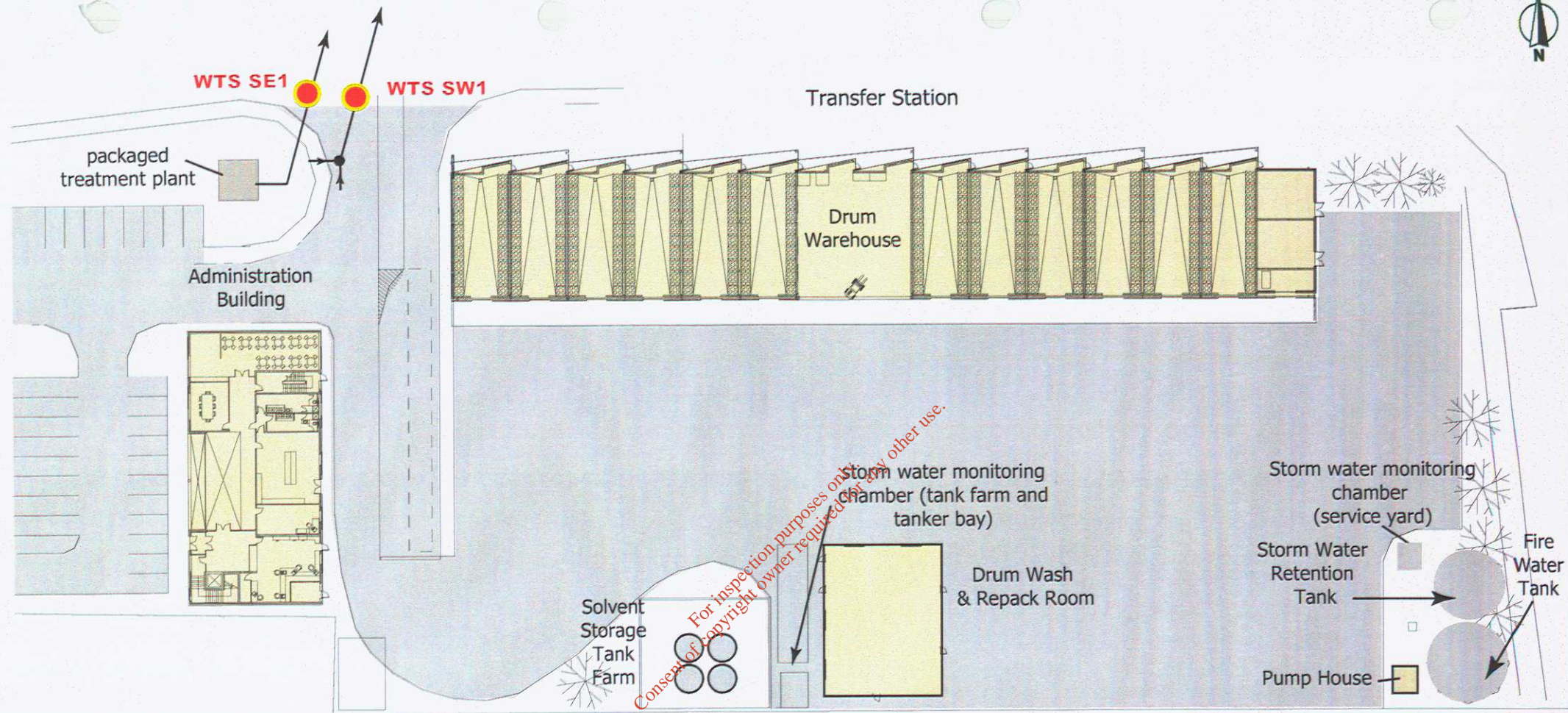
WTS SE1	Sanitary effluent emission from the waste transfer station, and the administration building
WTE SE1	Sanitary effluent emission from the waste to energy plant
WTS SW 1	Storm water emission from the waste transfer station, administration building and community recycling park
WTE SW1	Storm water emission from the waste to energy plant

Refer to figures 10.1 and 10.2 for the locations of the emission points.

### 10.6 Treatment of sanitary effluent

The sewage effluent from Ringaskiddy village, collected in the Cork County Council sewer system, is discharged untreated into the Cork Harbour. Cork County Council is at the initial stages of a project to build a sewage treatment plant to treat the effluent from the towns and villages of the lower Harbour, including Ringaskiddy. The project appears to be still at the design stage and the completion date is uncertain.

Indaver will install proprietary packaged treatment plants, sized appropriately, to treat the sanitary effluent from the facility. There will two plants, one to treat the sanitary effluent from the waste to energy plant and one to treat the sanitary effluent from the administration offices and the waste transfer station. The plants will be chosen to meet the requirements of the

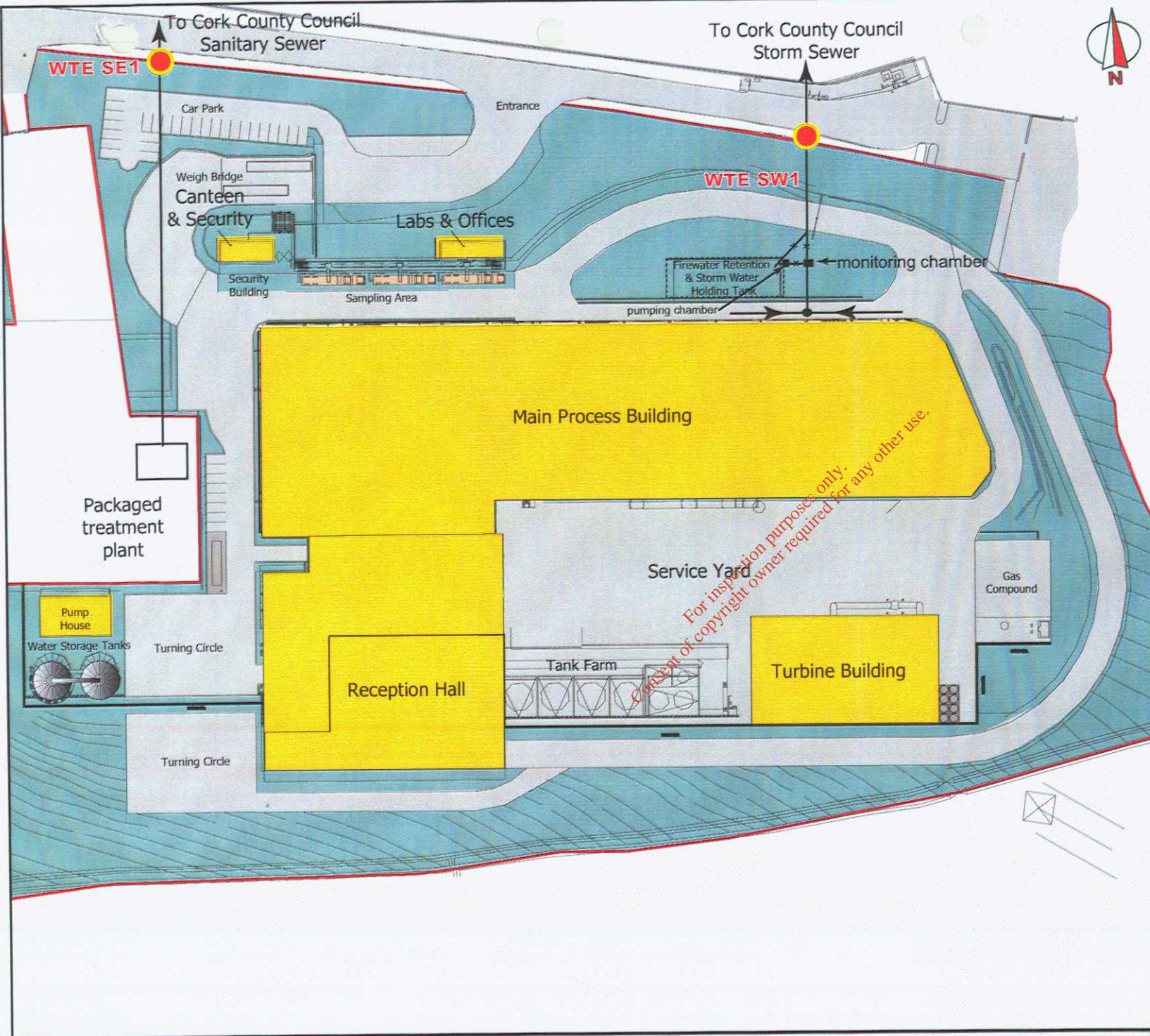


WTS SE1 Waste Transfer Station sanitary emission point  
 WTS SW1 Waste Transfer Station storm water emission point

**NOTE:** Exact location will be defined when detailed engineering has been completed

 <b>Ringaskiddy waste management facility</b>	
<b>Ringaskiddy Waste Management Facility</b> Licence Application	
	Files Located : <small>S:\jgbs\992\graphics\EIS figures</small>
	Ordnance Map :
Figure Title : <b>Waste Transfer Station</b> - Location of Stormwater & Sanitary Effluent Emission Points	Figure No : <b>10.1</b>





WTE SE1: Waste to Energy at Sanitary Effluent Emission

WTE SW1: Waste to Energy Plant: Storm Water Emission Point

NOTE: Exact location will be defined when detailed engineering has been completed

For inspection purposes only. Consent of copyright owner required for any other use.



**Ringaskiddy Waste Management Facility Licence Application**

**ARUP**

Files Located : 3:/yabs/992/graphics/EIS figures  
 Ordnance Map :

Figure Title : <b>Waste to Energy Plant - Location of Storm Water &amp; Sanitary Effluent Emission Points</b>	Figure No : <b>10.2</b>
--	----------------------------



Urban Waste Water Directive in terms of BOD reduction, as a minimum. A vendor of these plants has not been chosen yet.

### 10.7 Emissions to Surface Waters

There will be no emissions to surface waters.

For inspection purposes only.  
Consent of copyright owner required for any other use.