

APPENDIX C

FAN Screw Separator

*For inspection purposes only.
Consent of copyright owner required for any other use.*

FAN Separator GmbH



FAN Separator GmbH · Gewerbegebiet Herzfeld · 59510 Lippetal

Mr Peter Ogg
Coolross
Rachcablin
Rosscree
Co. Tipperary

IRELAND

03-10-01
af

Dewatering of Waste Products

Dear Mr Ogg,

thank you for your interest in our separation systems.

We hereby send you some literature and price information about our screw press. Furthermore I have attached pictures from similar applications: Dewatering of carrot peelings, potato peelings, pineapple peelings and food waste separation on a cruise ship. You will realize that the FAN Separator is the best machine for your purpose. It has been built and marketed since 1986, and since more than 3000 units of this type have been sold. The features of the machine are as follows:

- All components are made of stainless steel, except the body, which is made of cast iron
- The machine produces solids with a very high dry matter (about 30 %), perfect for composting
- The machine is self-cleaning, requires very low maintenance and is easy to service
- The motor has 5.5 KW

The machine can be fed by pump or by gravity. You will find more information in our brochure. As I have told you on the phone, the price for the machine is about 27.000 Euros. If necessary, the service will be done by IDS in Portlaoise, our dealer in Ireland.

We hope that this information is useful for you. Please let me know your comments. If you need further information do not hesitate to call me. My mobile phone is +49 170 18888 95.

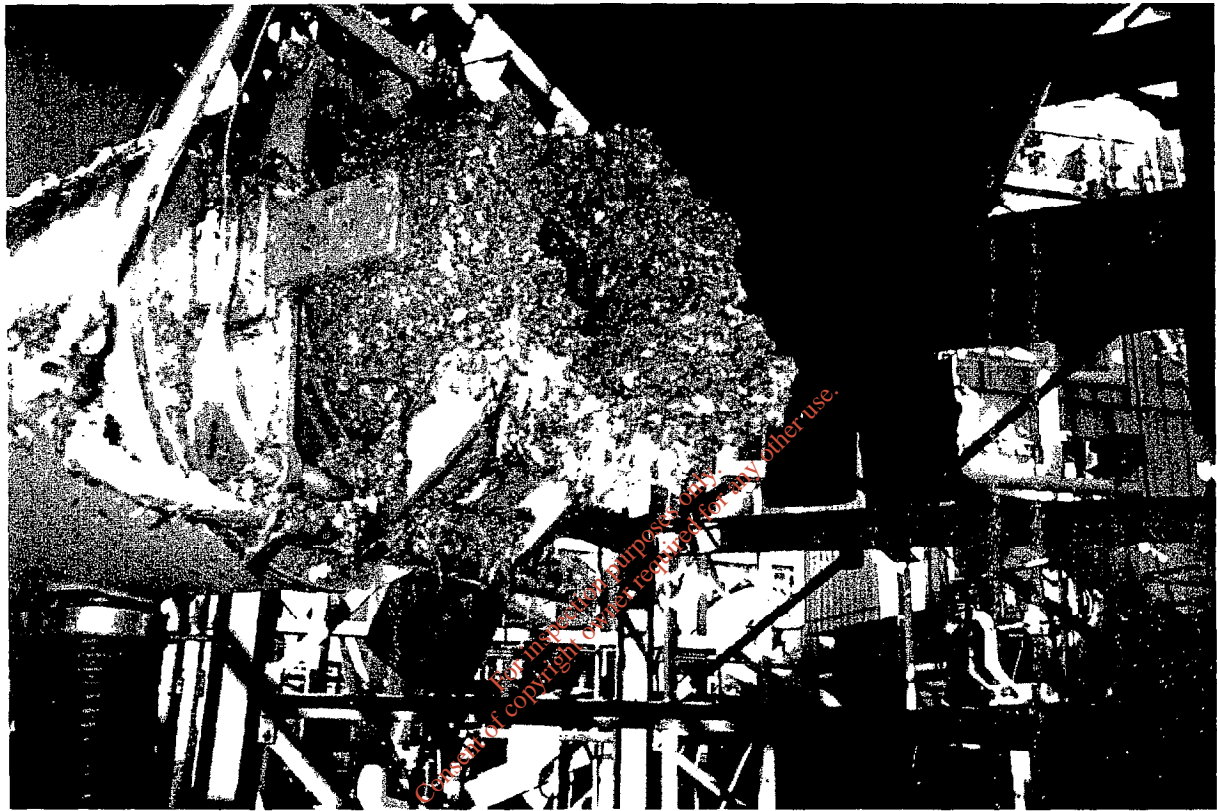
I am looking forward to hear from you.

Kind regards

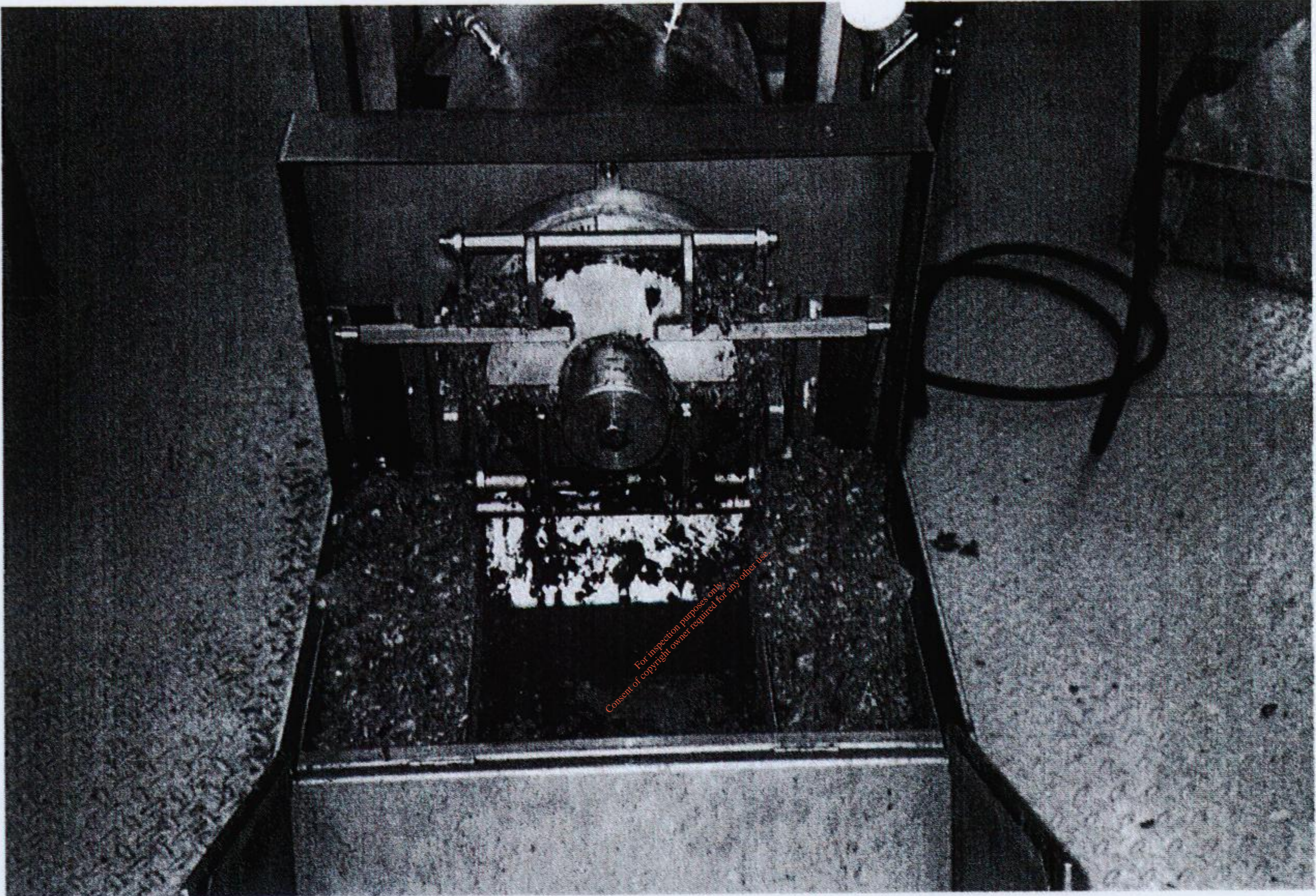
FAN Separator GmbH



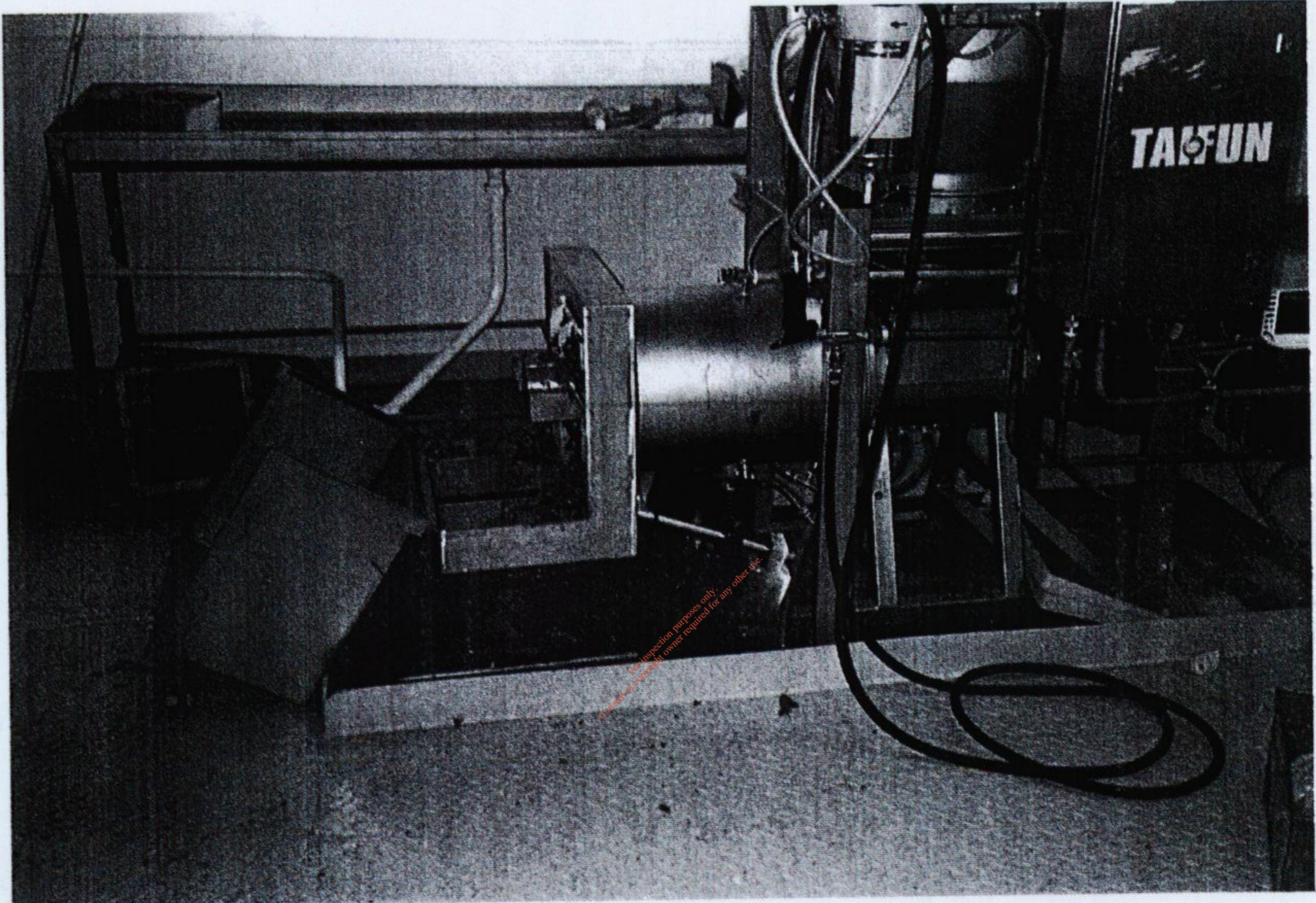
Andreas Ferch



Dewatering of Pineapple Waste
Entwässerung von Abfällen aus der Ananasverarbeitung



Dewatering of Pineapple Waste
Entwässerung von Abfällen aus der Ananasverarbeitung



Dewatering of Pineapple Waste
Entwässerung von Abfällen aus der Ananasverarbeitung

MANUAL OF OPERATION:
PSS - Press Screw Separator

FAN SEPARATOR

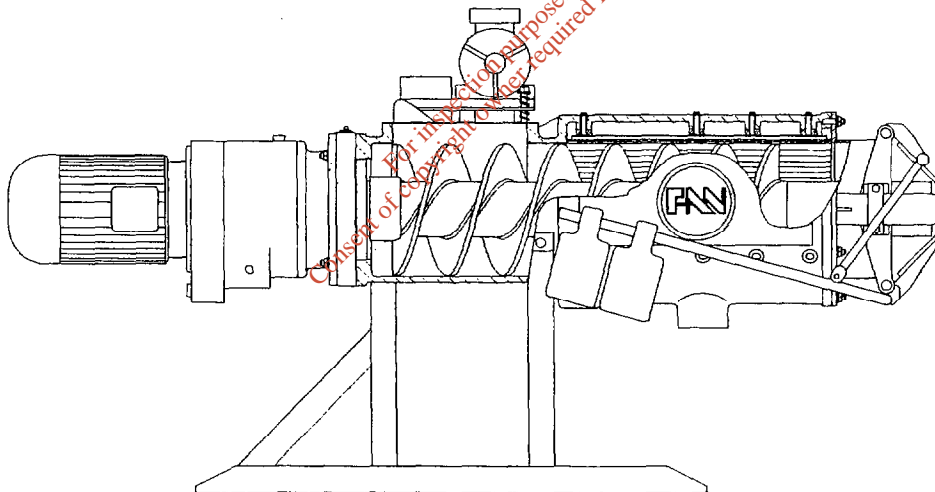
Solids-Liquid Separation
Screw Press, Centrifuge, Floation



MANUAL

FOR TRAINING OF OPERATORS OF THE PSS

Installation, Start-Up, Operation
Maintenance, Troubleshooting
Treatment Augmentation



FAN Press Screw Separator - "PSS"

FAX: +49-2923-610100; USA Fax: +1-630-871-8886;

Email: FAN@FAN-Separator.com Internet: www.fan-separator.com

*All rights reserved; Copyrighted 1999 FAN Separator GmbH; No copying or unauthorized printing is permitted!
We reserve the right to alter the design and or the technical specifications without prior notice.*

Manual-PSS-English.doc;

99 / 04 / 19

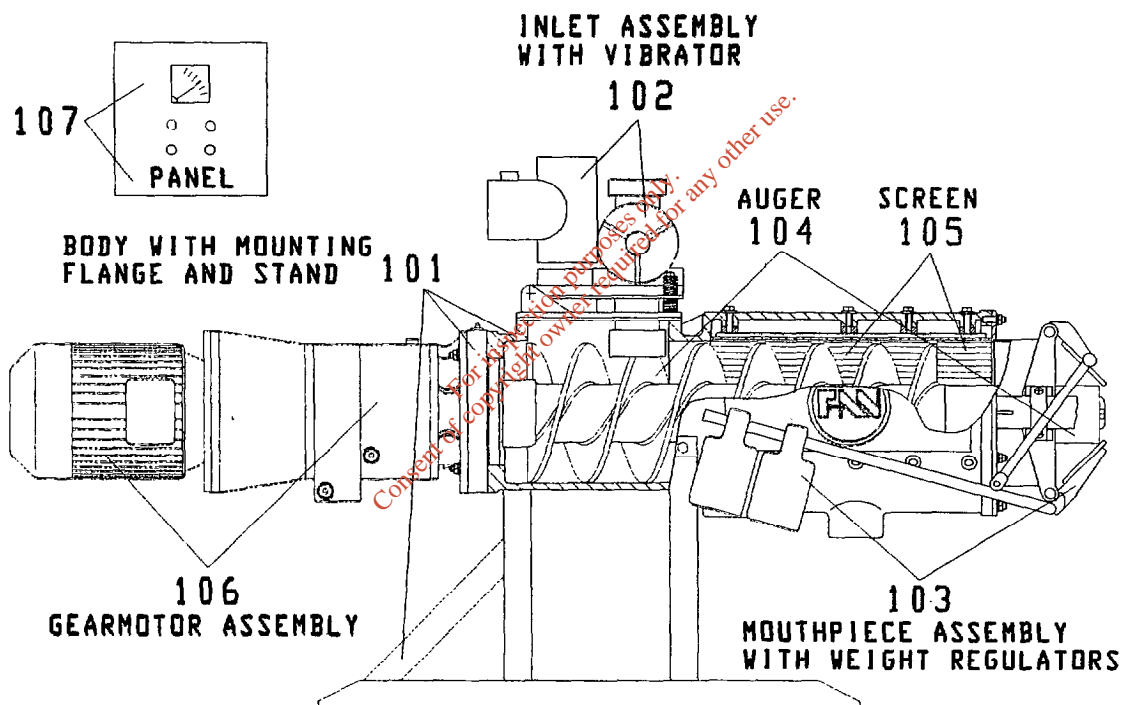
Installation, Start-Up and Operation of the FAN Press Screw Separator - "PSS"

INTRODUCTION

The FAN PSS is designed and manufactured by FAN Separator GmbH. The PSS comes fully assembled, ready to install. You need to connect electrical power to the motor through the electrical control panel. The connection of the hoses that come with the FAN Press Screw Separator to the liquid inflow and outflow completes the installation. To get started, you need to form a plug. If you have not seen the FAN Press Screw Separator in actual operation, it is recommended that you view a video showing the equipment in action, before proceeding with the installation and operation of the system.

The major components of the FAN Press Screw Separator, their names and numbers that correspond to the numbering of the "Parts List" are shown below in Figure 1:

Figure 1. Major Components of the PSS



CAUTION: Because your safety and the safety of your workers is important, it is required that everyone associated with the operation of this equipment must become familiar with the FAN Press Screw Separator, and everyone must be fully aware with the safety precautions in the operation of electro-mechanical equipment and in materials handling hazards.

Email: FAN@FAN-Separator.com Internet: www.FAN-Separator.com
FAX: +49-2923-610100; in USA Fax: +1-630-871-8886;

Separator mouthpiece to monitor the operation clearly [watch the Plug and the rate at which solids are coming out of the mouthpiece].

- ◆ Connect the panel to the electrical supply line and to the gear motor and the vibrator motor. This should be done by a qualified electrician.
- ◆ Connect the hoses that are included to the source of the liquid inflow, to the overflow bypass and to the outlet of the effluent liquid pipe.

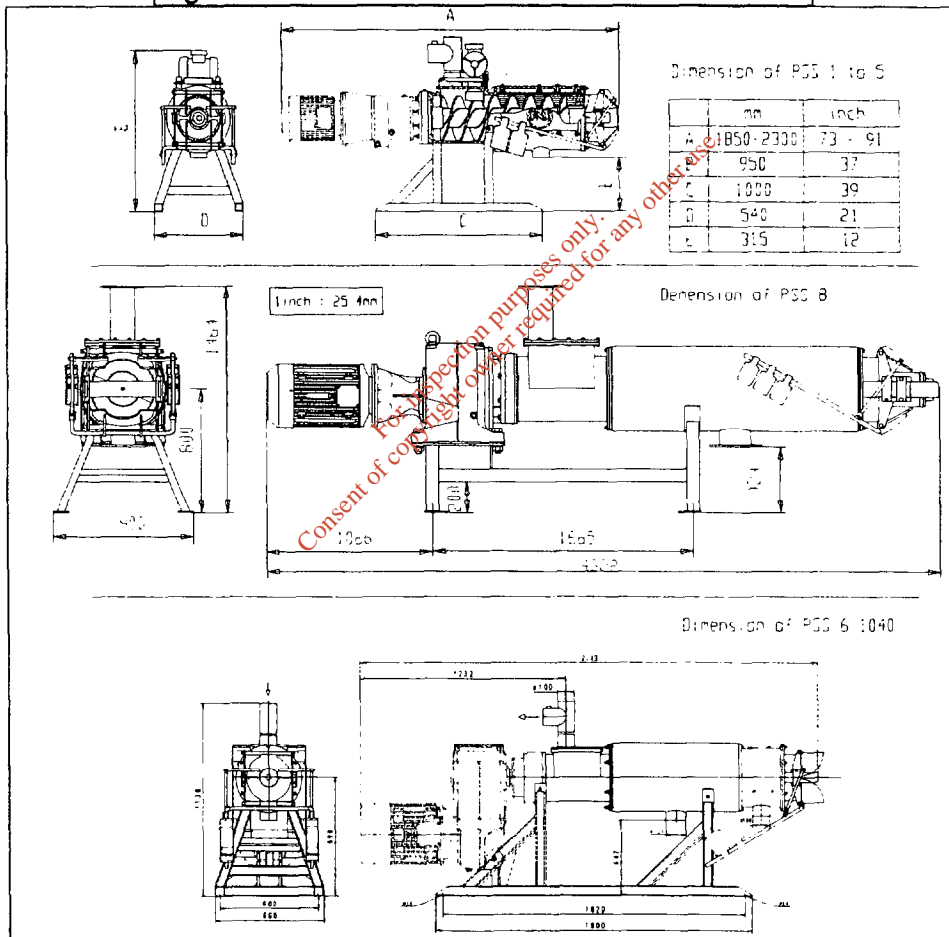
Set-Up

General dimensions of the FAN Press Screw Separator to size the platform are shown in Figure 3. It is best that you confirm the exact dimensions of the model you purchased.

It is important to note that the space in front of the mouthpiece must be free for a distance of at least 1500 mm [60 inches], or longer, depending on the length of the auger of the model you purchased. This free space is necessary to pull-out the auger and the screen. The auger and the screen need to be pulled out periodically for inspection. Suggested dimensions for the Platform are given in Figure 4.

The weight of the PSS varies from 400 to 1300 kg [900 to 3000 lbs.] depending on the model.

Figure 3. Standard Dimensions of the PSS



Allowing a minimum of 1 m in the perimeter of the Separator,

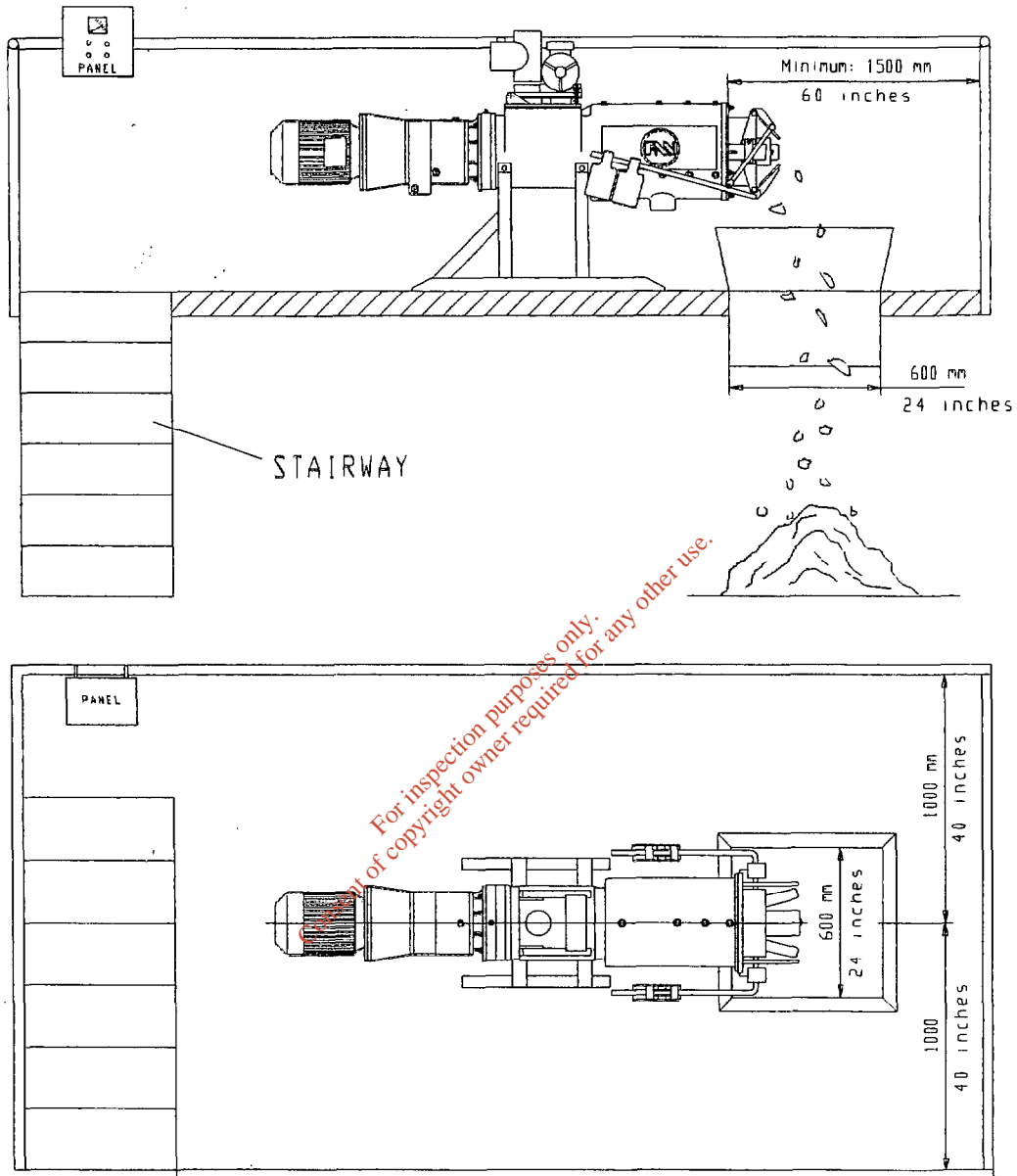
- ◆ Platform Width: no less than 2000 mm [80 inches]; 2500 mm [100 in.] for PSS 8.

Email: FAN@FAN-Separator.com Internet: www.FAN-Separator.com

FAX: +49-2923-610100; in USA Fax: +1-630-871-8886;

- ◆ **Platform length:** no less than 4000 mm [157 inches]; 6000 mm [236 in.] for PSS 8.
- ◆ **Platform Handrail Height:** no less than 1000 mm [40 inches];

Figure 4. A Typical Platform for the PSS



Depending on your application, the platform may be elevated to allow the dropping of the separated solids on a truck or trailer, the platform may be setup outdoors or indoors, and the feeding of the Separator may be by gravity or by pump [See Fig. 5]. Contact your dealer or our nearest office for ideas on how best to plan the setup and the platform. Our engineers have seen many good platform designs, but also some inadequate ones, so they will advise you after reviewing your plans.

Email: FAN@FAN-Separator.com Internet: www.FAN-Separator.com
 FAX: +49-2923-610100; in USA Fax: +1-630-871-8886;