

APPENDIX 6H

GROUNDWATER LEVEL DATA (MAR 2003 – SEPT 2004)

For inspection purposes only.
Consent of copyright owner required for any other use.

Well ID	Installation Date	Ground Level (mOD)	Well Screen		Groundwater Level (14 March 2003)		Groundwater Level (2/3 April 2003)		Groundwater Level (16 April 2003)		Groundwater Level (8/9 May 2003)		Groundwater Level (9 June 2003)			
			Depth (m bgl)	Reduced Level (mOD)	Depth (mbgl)	Reduced Level (mOD)	Depth (mbgl)	Reduced Level (mOD)	Depth (mbgl)	Reduced Level (mOD)	Depth (mbgl)	Reduced Level (mOD)	Depth (mbgl)	Reduced Level (mOD)		
GW 1/1	26/02/2003	232.1	18.5 - 30.5	213.6 - 201.6	16.3	215.80	18.33	215.77	16.53	215.57	16.62	215.48				
GW 1/2	27/02/2002	235.6	18.5 - 27.5	217.1 - 208.1	17.4	218.20	17.67	217.93	17.77	217.83	17.85	217.75				
GW 1/3	28/02/2003	237.7	23.0 - 41.0	214.7 - 196.7	25.2	212.50	25.37	212.33	25.44	212.26	25.43	212.27				
GW 1/4	25/02/2003	231.0	18.5 - 30.5	212.5 - 200.5	17.6	213.30	17.80	213.20	17.9	213.10	18.6	212.40				
GW 4/1	16/05/2002	219.7	15.0 - 18.0	205.1 - 202.1	4.5*	215.6*	3.70	218.00	3.87	215.83	4.07	215.63				
GW 4/2	20/05/2002	219.0	14.0 - 17.0	205.6 - 202.6	6*	213.6*	5.50	213.50	5.65	213.35	5.79	213.21				
GW 4/3	04/03/2003	223.7	11.0 - 20.0	213.9 - 204.9	11	213.80	11.29	212.41	11.5	212.20	11.73	211.97				
GW 4/4	04/03/2003	226.2	11.0 - 17.0	215.2 - 209.2	12.2	214.00	12.40	213.80	12.52	213.68	12.63	213.57				
GW 6/1	08/02/2003	208.7	12.5 - 30.5	196.2 - 178.2	15.4	193.30	13.90	194.80	15.17	193.53	15.36	193.34				
GW 6/2	07/02/2003	208.9	13.0 - 25.0	195.9 - 183.9	16.8	192.10	15.29	193.61	16.29	192.61	16.45	192.45				
GW 6/3	05/02/2003	214.2	18.5 - 30.5	195.7 - 183.7	21.6	192.60	21.68	192.52	21.7	192.50	22.18	192.02				
GW 6/4	21/02/2002	213.9	14.0 - 17.0	199.9 - 196.9	16.7*	197.2*	14.03	199.67	14.08	199.62	14.05	199.65				
GW 6/5	06/06/2003	208.8	15.5-21.5	193.3-187.3									17.80	191.50		
GW 6/6	09/06/2003	212.5	17-23	195.5-189.5									21.00	191.50		
GWR1	15/09/2003	209.8	13-22	196.8-187.8												
GWR2	15/09/2003	216.0	5m-11m	211-205												
GWR3	16/09/2003	208.6	1.5-6	207.1-202.6												
Cookehill GW1	08/10/2003	201.1	5.00 - 21.00	196.1-180.1												
Pond at Area 4					Water Level 216.33 mOD (27/02/03)		Water Level 215.8 mOD (23/04/2003)			Water Level 215.67 mOD (06/02/2003)						
BH and Well IDs										Groundwater Level (15/16 April 2003)						
BH 1/10	12/03/2003	237.8								No water	No water					
BH 1/11	17/02/2003	235.9								9.3	226.6 (p)					
BH 1/12	20/02/2003	238.8								13.42	225.4 (p)					
BH 1/13	06/03/2003	239.4								No water	No water					
BH 1/14	25/02/2003	237.7								No water	No water					
BH 4/10	05/03/2003	220.1								4.57	215.5					
BH 4/11	03/03/2003	222.1								6.76	216.3					
BH 4/12	01/03/2003	220.7								5	215.7					
BH 6/10	21/02/2003	214.1								6.1	208.0 (p)					
BH 6/11	22/02/2003	214.5								No water	No water					
BH 6/12	27/02/2003	215.2								6.07	207.1 (p)					
										* Groundwater levels were measured by KT Cullen on the 20 May 2002.					(p) - Denotes perched groundwater	

Consent of copy for inspection purposes only
 Consent of copy for owner required for any other use

Groundwater Well ID	Installation Date	Ground Level (mOD)	Well Screen		Groundwater Level (25 June 2003)		Groundwater Level (10 July 2003)		Groundwater Level (8th September 2003)		Groundwater Level (3rd October 2003)	
			Depth (m bgl)	Reduced Level (mOD)	Depth (mbgl)	Reduced Level (mOD)	Depth (mbgl)	Reduced Level (mOD)	Depth (mbgl)	Reduced Level (mOD)	Depth (mbgl)	Reduced Level (mOD)
GW 1/1	26/02/2003	232.1	18.5 - 30.5	213.8 - 201.6	16.88	215.42			17.2	214.9	17.49	214.6
GW 1/2	27/02/2002	235.6	18.5 - 27.5	217.1 - 208.1	17.93	217.67			18.1	217.5	18.21	217.4
GW 1/3	28/02/2003	237.7	23.0 - 41.0	214.7 - 196.7	25.59	212.11			25.9	211.8	26.06	211.6
GW 1/4	25/02/2003	231.0	18.5 - 30.5	212.5 - 200.5	18.1	212.90			18.4	212.8	18.58	212.4
GW 4/1	16/05/2002	219.7	15.0 - 18.0	205.1 - 202.1	n/a	n/a			na.	na.	na.	na.
GW 4/2	20/05/2002	219.0	14.0 - 17.0	205.6 - 202.6	5.93	213.07			6.43	212.6	6.67	212.3
GW 4/3	04/03/2003	223.7	11.0 - 20.0	213.9 - 204.9	11.85	211.85			12.39	211.3	12.47	211.2
GW 4/4	04/03/2003	226.2	11.0 - 17.0	215.2 - 209.2	12.78	213.42			13	213.2	13.3	212.9
GW 6/1	06/02/2003	208.7	12.5 - 30.5	196.2 - 178.2	15.35	193.35			14.3	194.4	14.42	194.3
GW 6/2	07/02/2003	208.9	13.0 - 25.0	195.9 - 183.9	16.63	192.27			16	192.9	16.99	191.9
GW 6/3	05/02/2003	214.2	18.5 - 30.5	195.7 - 183.7	21.83	192.37			21.8	192.4	21.91	192.3
GW 6/4	21/02/2002	213.9	14.0 - 17.0	199.9 - 196.9	14.1	199.80			14.17	199.7	Dry	Dry
GW 6/5	06/06/2003	208.8	15.5-21.5	193.3-187.3	15.5	193.30	15.52	193.28	15.7	193.1	15.72	193.1
GW 6/6	09/08/2003	212.5	17-23	195.5-189.5	21.11	191.39	21.15	191.35	21.5	191.0	21.67	190.8
GWR1	15/09/2003	209.8	13-22	196.8-187.8							16.97	192.8
GWR2	15/09/2003	216.0	5m-11m	211-205							6.65	209.4
GWR3	16/09/2003	208.6	1.5-8	207.1-202.6							2.61	206.0

Cookehill GW1	08/10/2003	201.1	5.00 - 21.00	196.1-180.1								
---------------	------------	-------	--------------	-------------	--	--	--	--	--	--	--	--

Pond at Area 4							Water Level 214.7 mOD (10/07/2003)				Water Level 213.66 mOD (03/10/2003)	
----------------	--	--	--	--	--	--	------------------------------------	--	--	--	-------------------------------------	--

Groundwater Well ID	Installation Date	Ground Level (mOD)	Well Screen	Groundwater Level (25 June 2003)	Groundwater Level (10 July 2003)	Groundwater Level (8th September 2003)	Groundwater Level (30th September 2003)	
							Depth (mbgl)	Reduced Level (mOD)
BH 1/10	12/03/2003	237.8					No water	No water
BH 1/11	17/02/2003	235.9					10	225.9 (p)
BH 1/12	20/02/2003	238.8					No water	No water
BH 1/13	06/03/2003	239.4					No water	No water
BH 1/14	25/02/2003	237.7					No water	No water
BH 4/10	05/03/2003	220.1					No water	No water
BH 4/11	03/03/2003	222.1					No water	No water
BH 4/12	01/03/2003	220.7					No water	No water
BH 6/10	21/02/2003	214.1					6.91	207.19 (p)
BH 6/11	22/02/2003	214.5					No water	No water
BH 6/12	27/02/2003	215.2					No water	No water

For inspection purposes only. Consent of copyright owner required for any other use.

(p) - Denotes perched groundwater

Groundwater Well ID	Installation Date	Ground Level (mOD)	Well Screen		Groundwater Level (10th November 2003)		Groundwater Level (11th December 2003)		Groundwater Level (13th January 2004)		Groundwater Level (10th March 2004)	
			Depth (m bgl)	Reduced Level (mOD)	Depth (mbgl)	Reduced Level (mOD)	Depth (mbgl)	Reduced Level (mOD)	Depth (mbgl)	Reduced Level (mOD)	Depth (mbgl)	Reduced Level (mOD)
GW 1/1	28/02/2003	232.1	18.5 - 30.5	213.6 - 201.6	17.44	214.7	17.28	214.8	16.98	215.1	16.77	215.3
GW 1/2	27/02/2002	235.6	18.5 - 27.5	217.1 - 208.1	18.28	217.3	18.23	217.4	18.16	217.4	18.1	217.5
GW 1/3	28/02/2003	237.7	23.0 - 41.0	214.7 - 196.7	26.25	211.5	26.32	211.4	26.34	211.4	26.05	211.7
GW 1/4	25/02/2003	231.0	18.5 - 30.5	212.5 - 200.5	18.77	212.2	18.83	212.2	18.78	212.2	18.54	212.5
GW 4/1	16/05/2002	219.7	15.0 - 18.0	205.1 - 202.1	n.a.	n.a.	n.a.	n.a.	n.a.	n.a.	5.27	214.4
GW 4/2	20/05/2002	219.0	14.0 - 17.0	205.6 - 202.6	6.83	212.2	6.82	212.2	6.63	212.4	6.43	212.6
GW 4/3	04/03/2003	223.7	11.0 - 20.0	213.9 - 204.9	12.59	211.1	12.59	211.1	12.33	211.4	12.02	211.7
GW 4/4	04/03/2003	226.2	11.0 - 17.0	215.2 - 209.2	13.17	213.0	13.09	213.1	12.87	213.3	12.59	213.6
GW 6/1	06/02/2003	208.7	12.5 - 30.5	196.2 - 178.2	15.16	193.5	13.85	194.9	13.91	194.8	13.82	194.9
GW 6/2	07/02/2003	208.9	13.0 - 25.0	195.9 - 183.9	16.95	192.0	14.9	194.0	14.23	194.7	14.25	194.7
GW 6/3	05/02/2003	214.2	18.5 - 30.5	195.7 - 183.7	22.31*	192.2	22.3	192.2	22.23	192.3	22.07	192.1
GW 6/4	21/02/2002	213.9	14.0 - 17.0	199.9 - 196.9	Dry	Dry	Dry	Dry	Dry	Dry	Dry	Dry
GW 6/5	06/06/2003	208.8	16.5 - 21.5	193.3 - 187.3	15.73	193.1	15.4	193.4	14.96	193.8	14.65	194.2
GW 6/6	09/06/2003	212.5	17-23	195.5 - 189.5	21.91	190.6	Standpipe damaged	Standpipe damaged	Standpipe damaged	Standpipe damaged	20.58 Top standpipe	191.6
GWR1	15/09/2003	209.8	13-22	196.8 - 187.8	19.91	189.9	17	192.8	16.89	192.9	16.87	192.9
GWR2	15/09/2003	216.0	5m-11m	211-205	6.6	209.4	6.34	209.7	6.08	209.9	6.25	209.9
GWR3	16/09/2003	208.6	1.5-6	207.1-202.6	2.59	206.0	2.46	206.2	2.28	206.3	2.48	206.1
Cookehill GW1	08/10/2003	201.1	5.00 - 21.00	196.1-180.1			9.89	191.2	9.5	191.6	8.84	192.2
Pond at Area 4							Water Level 213.79 mOD (11/12/2003)			Water Level 214.36m OD (10/03/2004)		
Borehole Well ID												
BH 1/10	12/03/2003	237.8									Dry	Dry
BH 1/11	17/02/2003	235.9									9.14	226.8
BH 1/12	20/02/2003	238.8									13.59	225.2
BH 1/13	06/03/2003	239.4									Dry	Dry
BH 1/14	25/02/2003	237.7									Dry	Dry
BH 4/10	05/03/2003	220.1									Dry	Dry
BH 4/11	03/03/2003	222.1									Dry	Dry
BH 4/12	01/03/2003	220.7									Dry	Dry
BH 6/10	21/02/2003	214.1									6.35	207.8
BH 6/11	22/02/2003	214.5									Dry	Dry
BH 6/12	27/02/2003	215.2									8.52	206.7

For inspection purposes only
Consent of copyright owner required for any other use

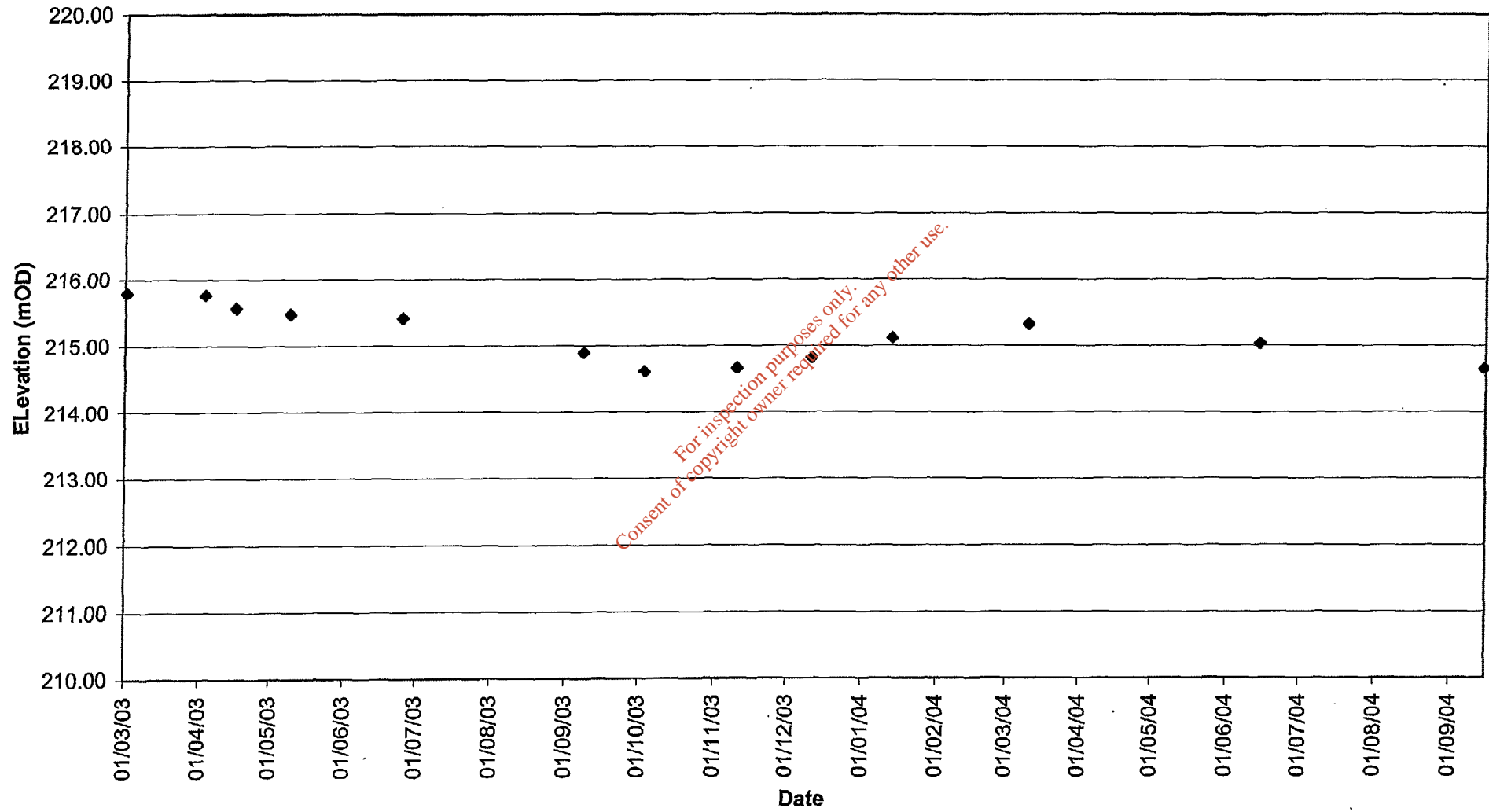
Well ID	Installation Date	Ground Level (mOD)	Well Screen		Groundwater Level (14th June 2004)		Groundwater Level (15 Sept 2004)	
			Depth (m bgl)	Reduced Level (mOD)	Depth (mbgl)	Reduced Level (mOD)	Depth (mbgl)	Reduced Level (mOD)
GW 1/1	26/02/2003	232.1	18.5 - 30.5	213.6 - 201.6	17.06	215.0	17.45	214.7
GW 1/2	27/02/2002	235.6	18.5 - 27.5	217.1 - 208.1	18.23	217.4	18.41	217.2
GW 1/3	28/02/2003	237.7	23.0 - 41.0	214.7 - 196.7	26.06	211.6	26.33	211.4
GW 1/4	25/02/2003	231.0	18.5 - 30.5	212.5 - 200.5	18.6	212.4	18.9	212.1
GW 4/1	16/05/2002	219.7	15.0 - 18.0	205.1 - 202.1	5.96	213.7		219.7
GW 4/2	20/05/2002	219.0	14.0 - 17.0	205.6 - 202.6	5.68	212.3	7.12	211.9
GW 4/3	04/03/2003	223.7	11.0 - 20.0	213.9 - 204.9	12.44	211.3	12.82	210.9
GW 4/4	04/03/2003	226.2	11.0 - 17.0	215.2 - 209.2	13	213.2	13.16	213.0
GW 6/1	05/02/2003	208.7	12.5 - 30.5	196.2 - 178.2	14.52	194.2	14.09	194.6
GW 6/2	07/02/2003	208.9	13.0 - 25.0	195.9 - 183.9	14.96	193.9	15.21	193.7
GW 6/3	05/02/2003	214.2	18.5 - 30.5	195.7 - 183.7	21.96	192.2	21.93	192.3
GW 6/4	21/02/2002	213.9	14.0 - 17.0	199.9 - 196.9	Dry	Dry	Dry	Dry
GW 6/5	06/06/2003	208.8	15.5-21.5	193.3-187.3	15.22	193.6	15.53	193.3
GW 6/6	09/06/2003	212.5	17-23	195.5-189.5	20.8	191.7	12.25	200.3
GWR1	15/09/2003	209.8	13-22	196.8-187.8	16.89	192.9	16.93	192.8
GWR2	15/09/2003	216.0	5m-11m	211-205	6.45	209.6	6.6	209.4
GWR3	16/09/2003	208.6	1.5-6	207.1-202.6	3.17	205.5	2.44	206.2
Cookehill GW4	08/10/2003	201.1	5.00 - 21.00	196.1-180.1	9.36	191.7		

Pond at Area 4								
----------------	--	--	--	--	--	--	--	--

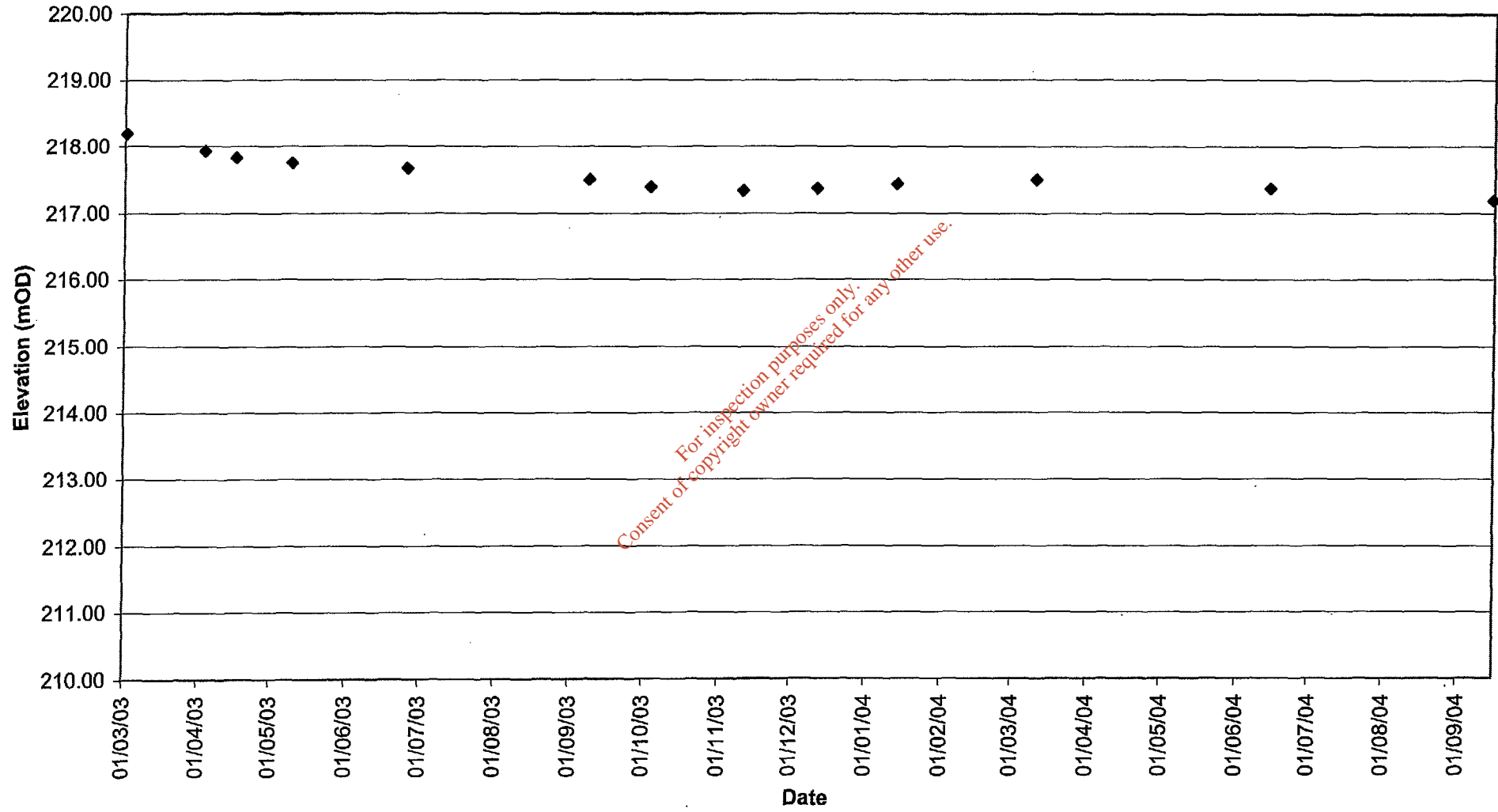
Well ID	Installation Date	Ground Level (mOD)	Depth (m bgl)	Reduced Level (mOD)	Depth (mbgl)	Reduced Level (mOD)	Depth (mbgl)	Reduced Level (mOD)
BH 1/10	12/03/2003	237.8						
BH 1/11	17/02/2003	235.9						
BH 1/12	20/02/2003	238.8						
BH 1/13	06/03/2003	239.4						
BH 1/14	25/02/2003	237.7						
BH 4/10	05/03/2003	220.1						
BH 4/11	03/03/2003	222.1						
BH 4/12	01/03/2003	220.7						
BH 6/10	21/02/2003	214.1						
BH 6/11	22/02/2003	214.5						
BH 6/12	27/02/2003	215.2						

For inspection purposes only.
Consent of copyright owner required for any other use.

GW1/1

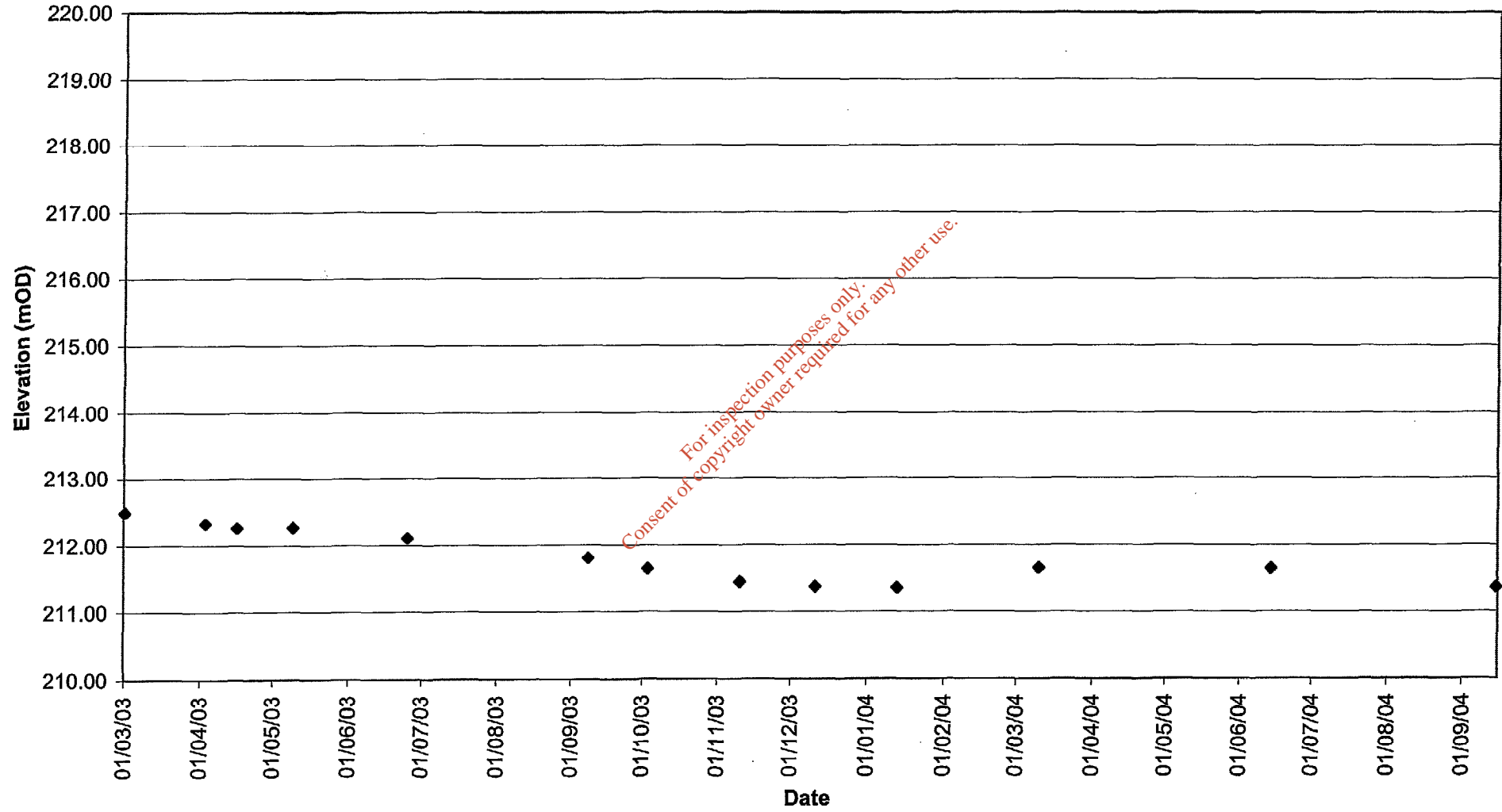


GW1/2

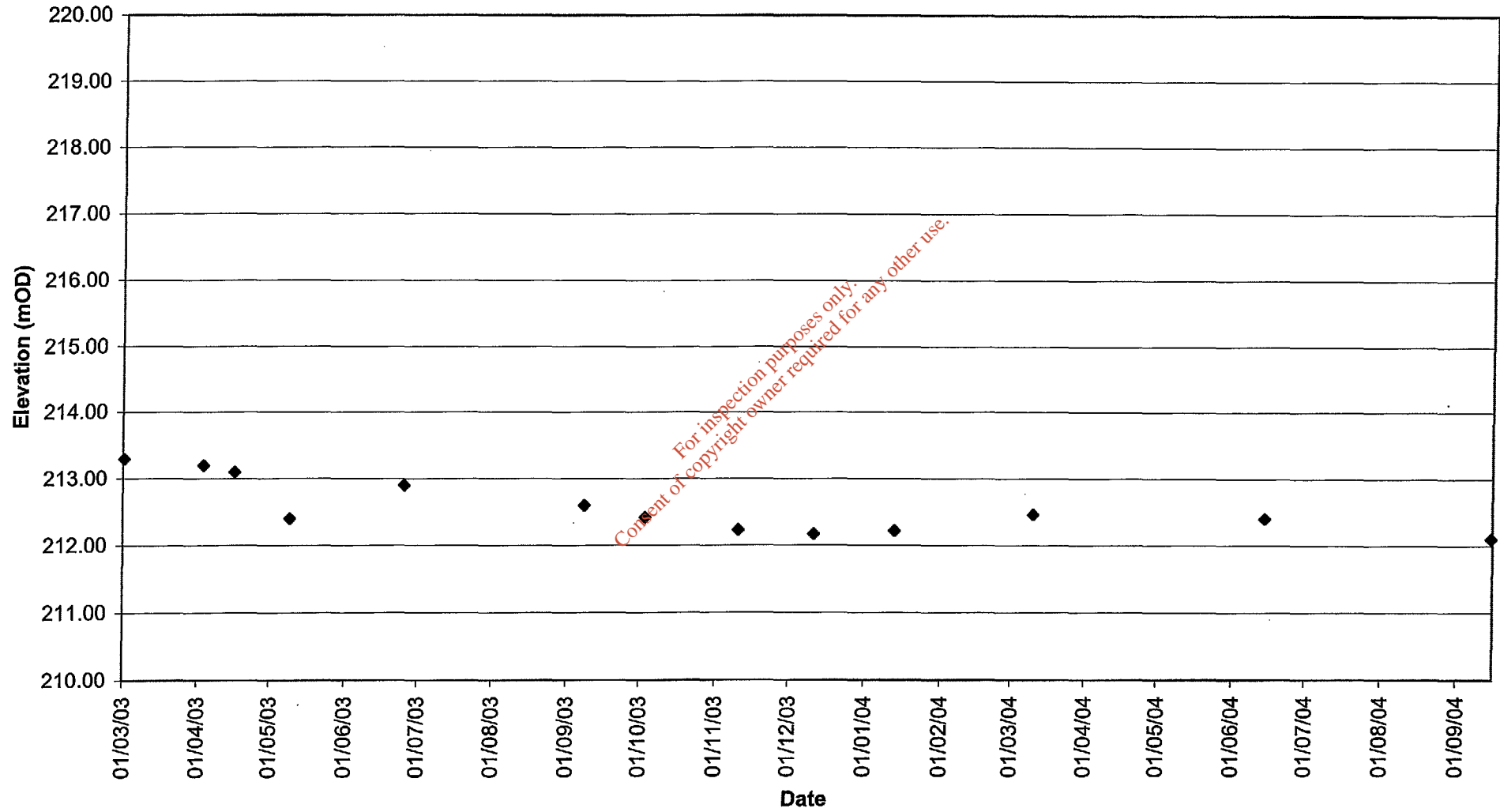


For inspection purposes only.
Consent of copyright owner required for any other use.

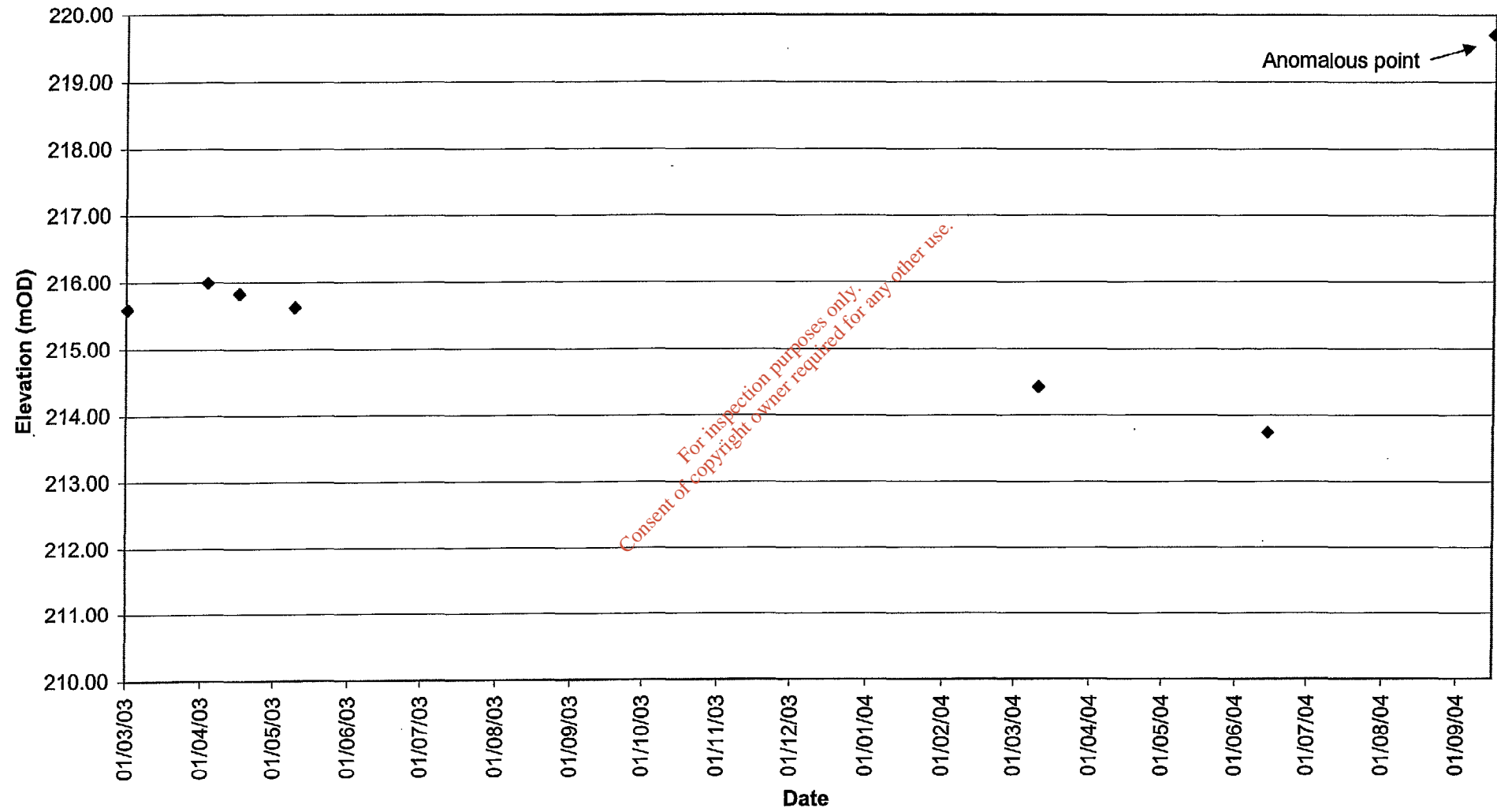
GW1/3



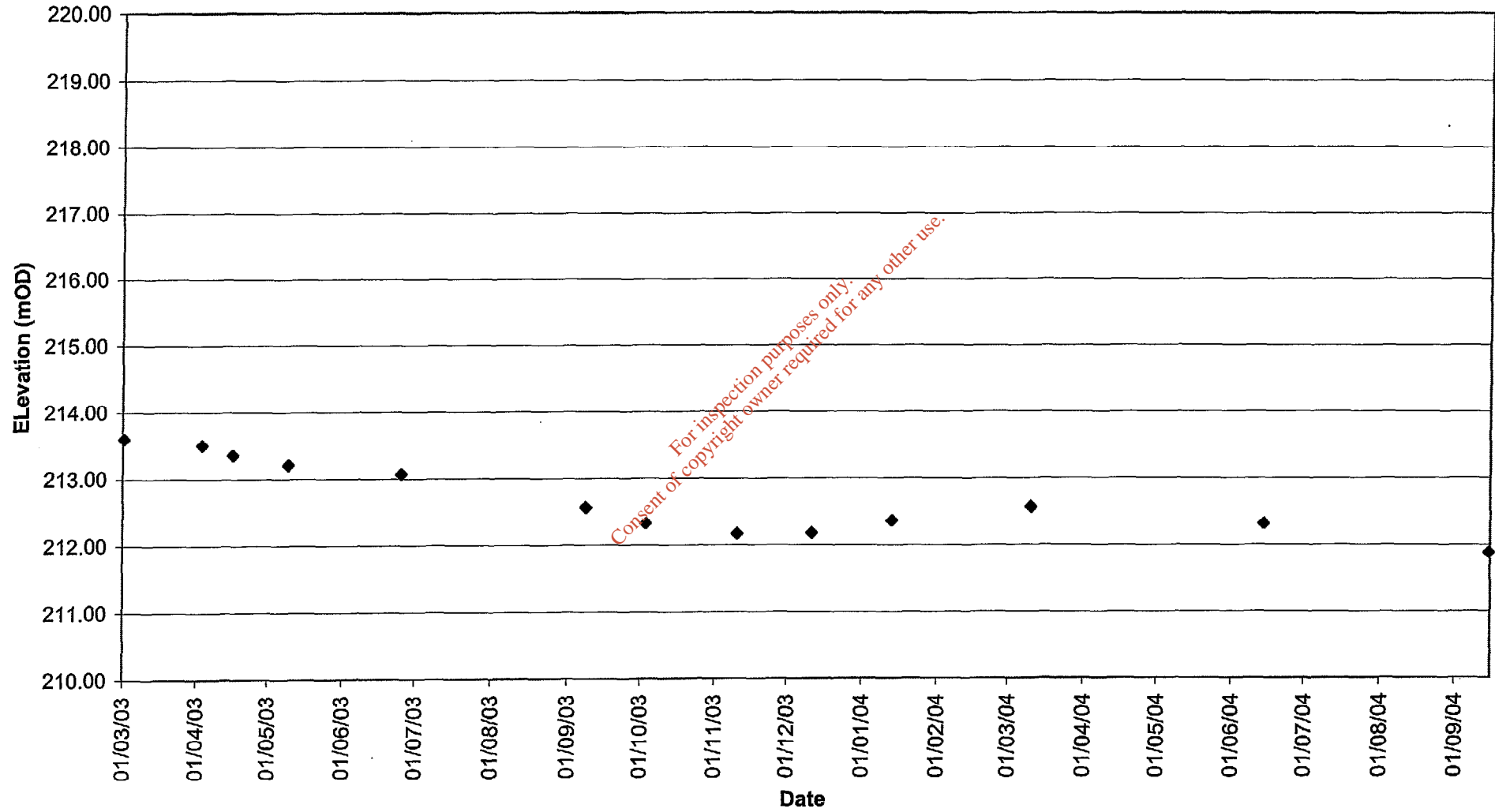
GW1/4



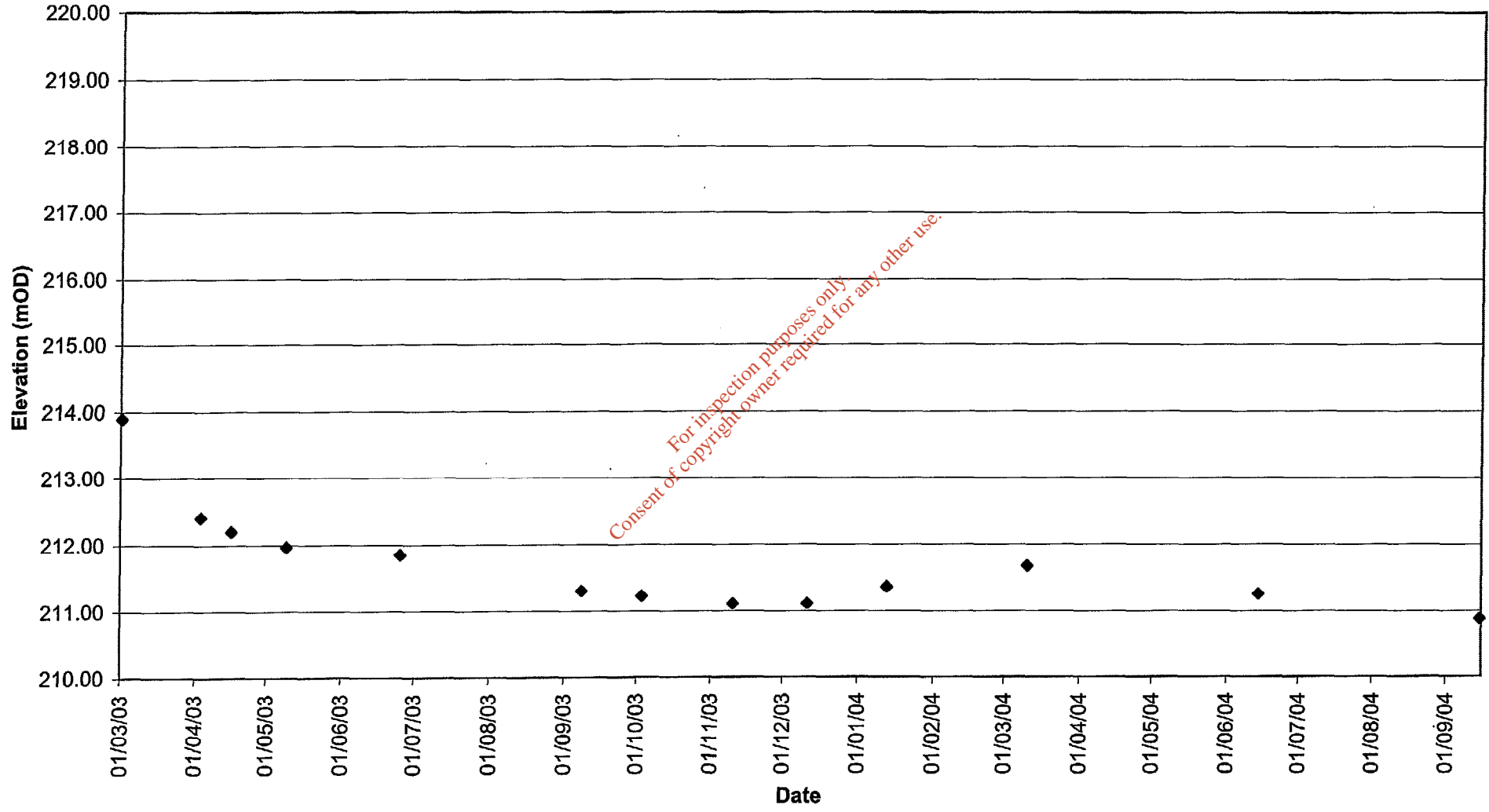
GW4/1



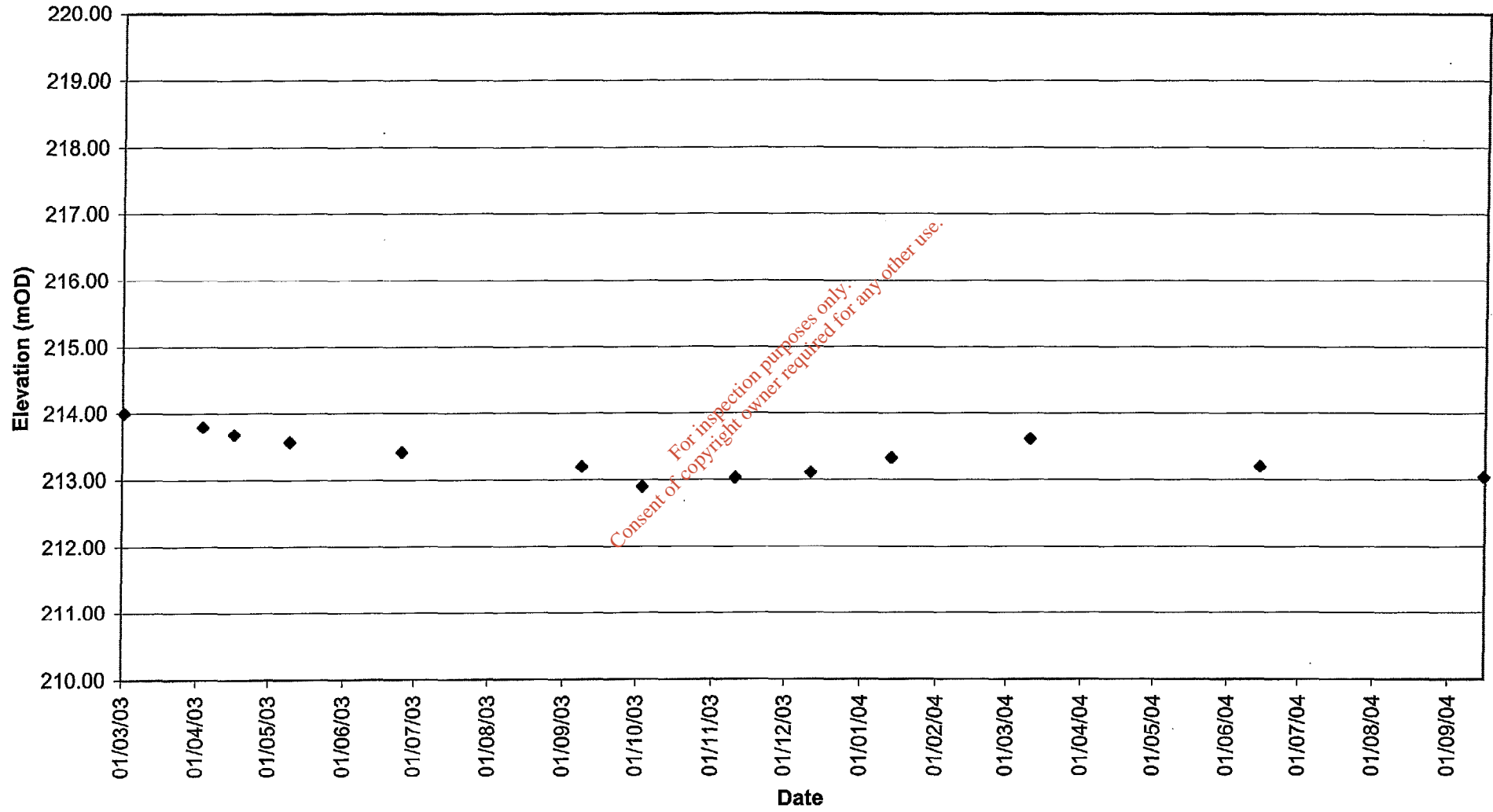
GW 4/2



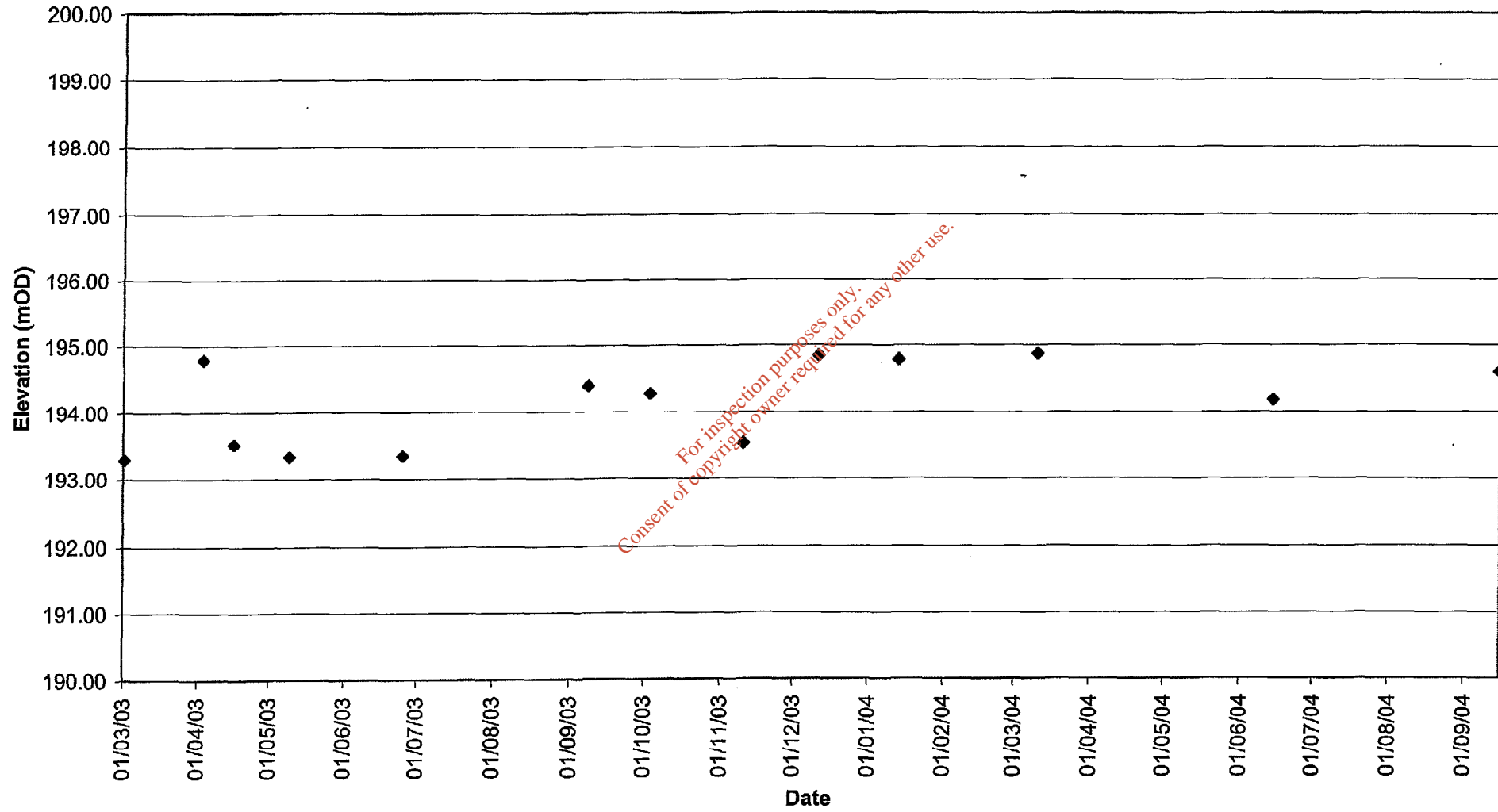
GW4/3



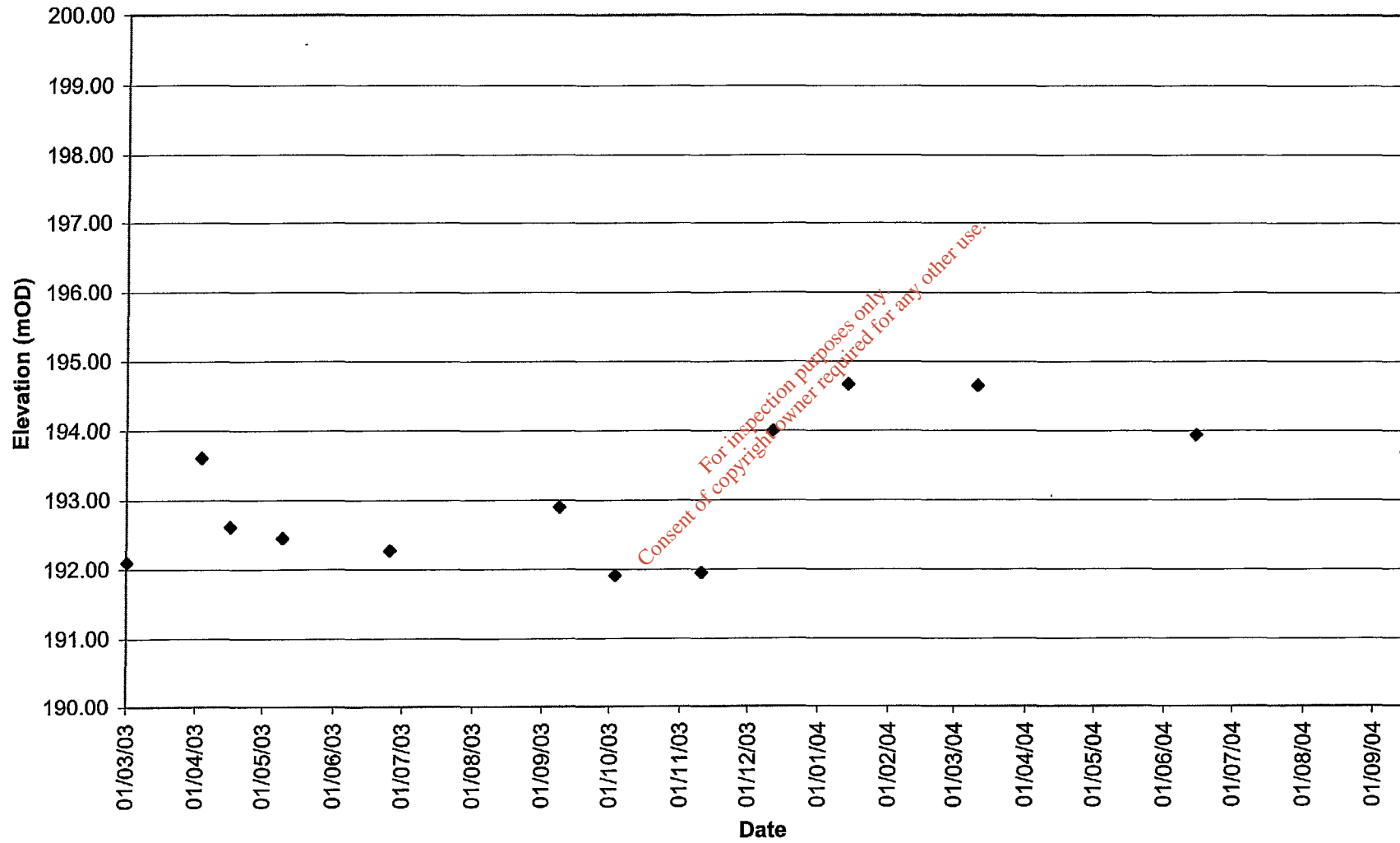
GW4/4



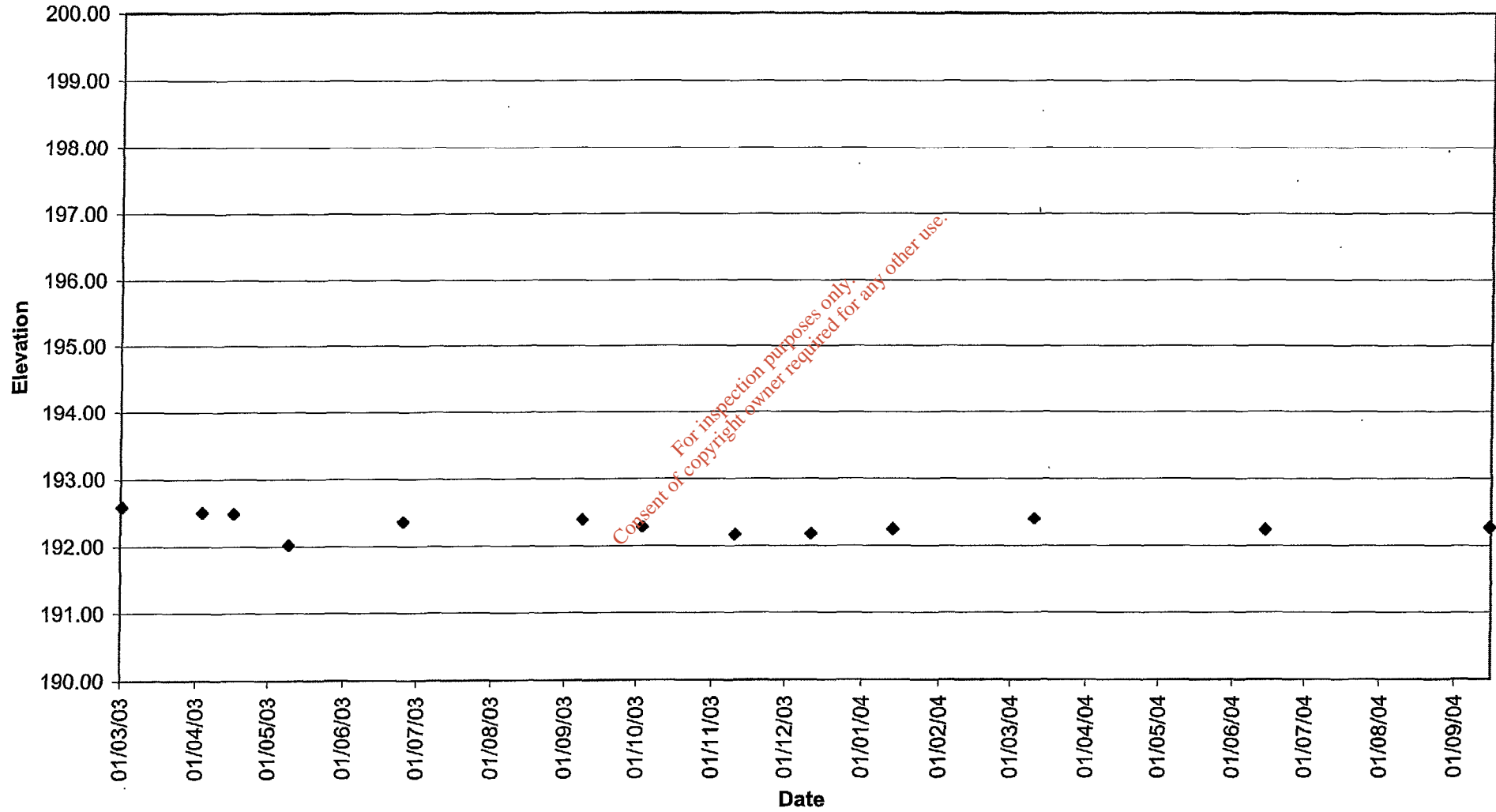
GW 6/1



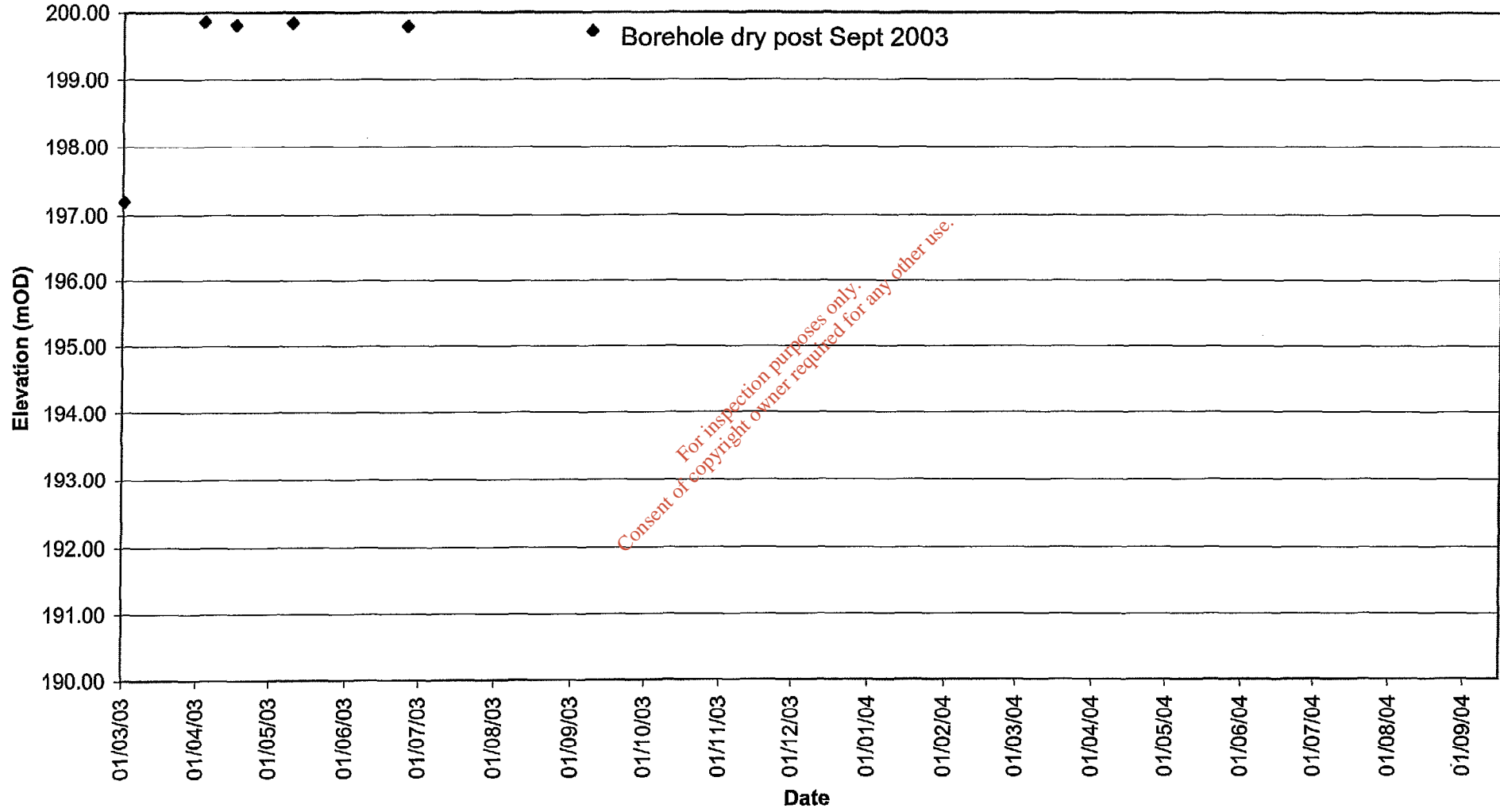
GW 6/2



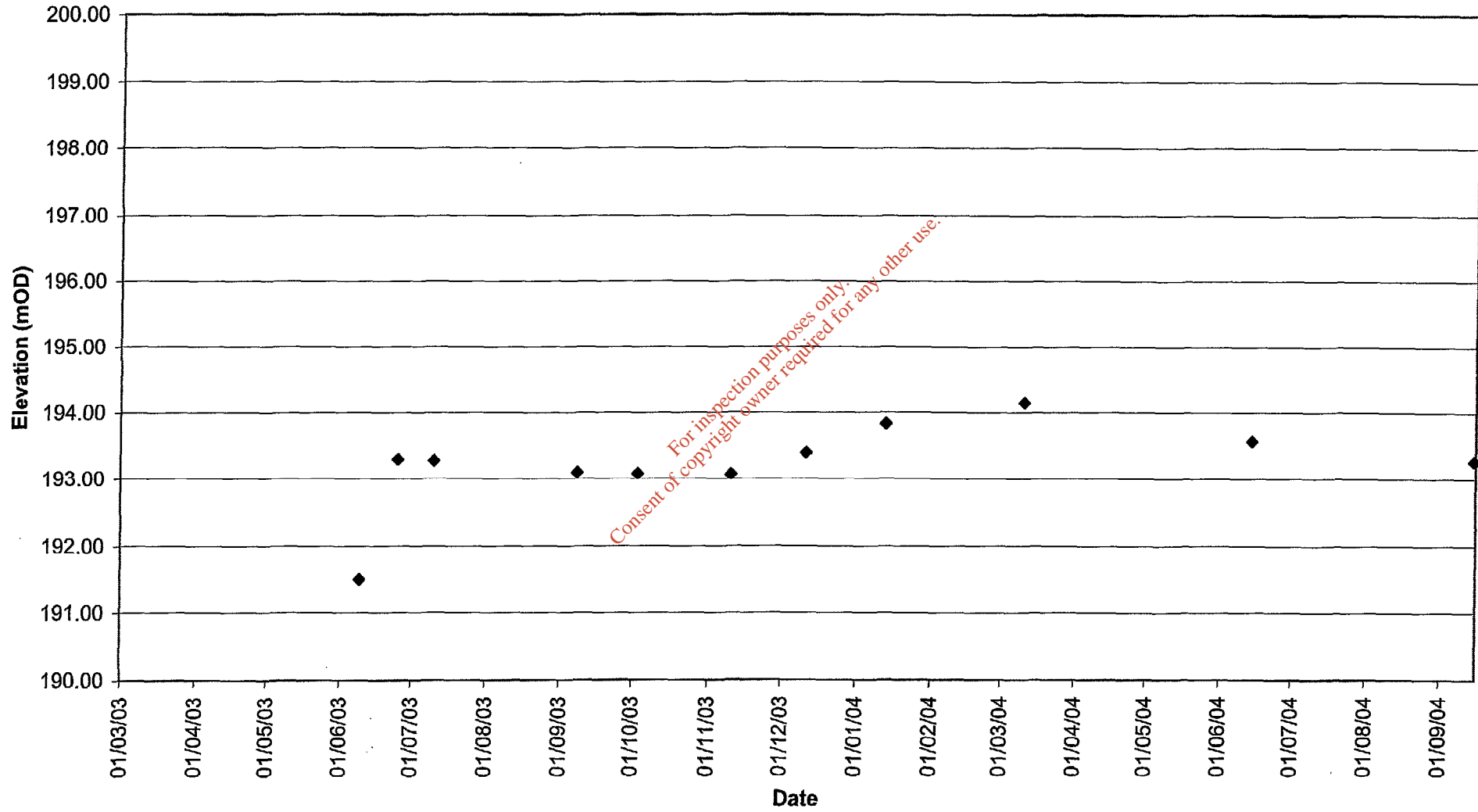
GW 6/3



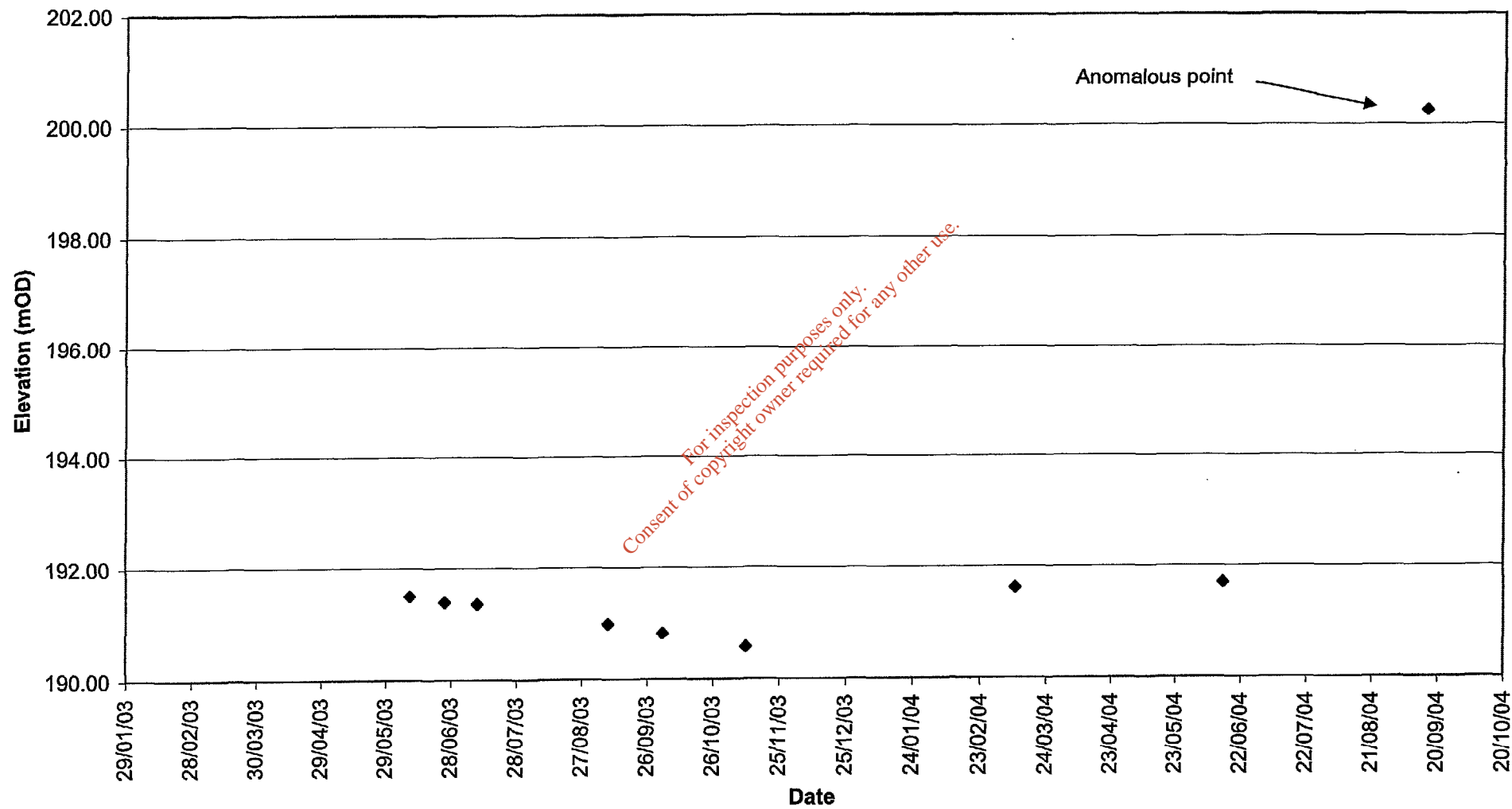
GW 6/4



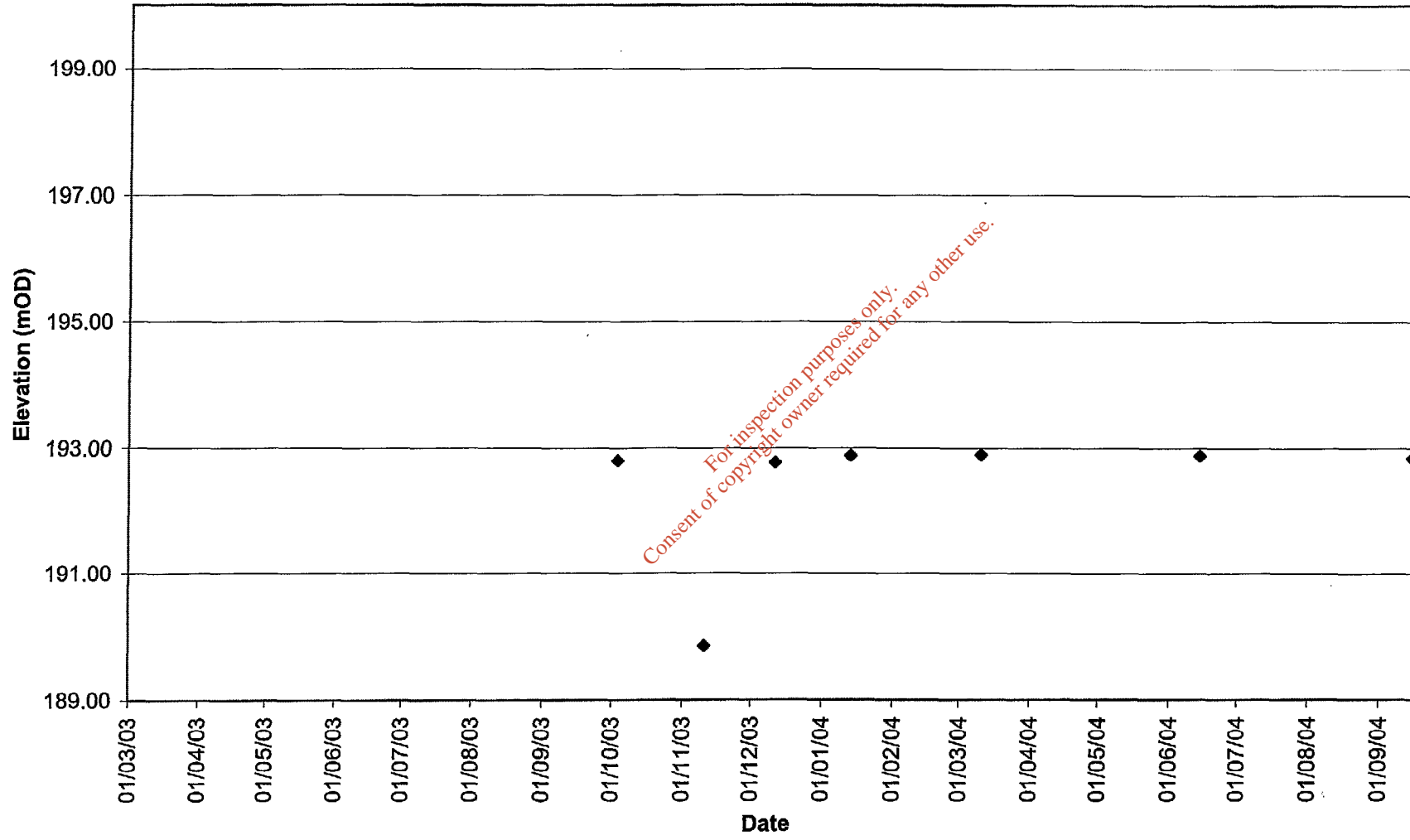
GW 6/5



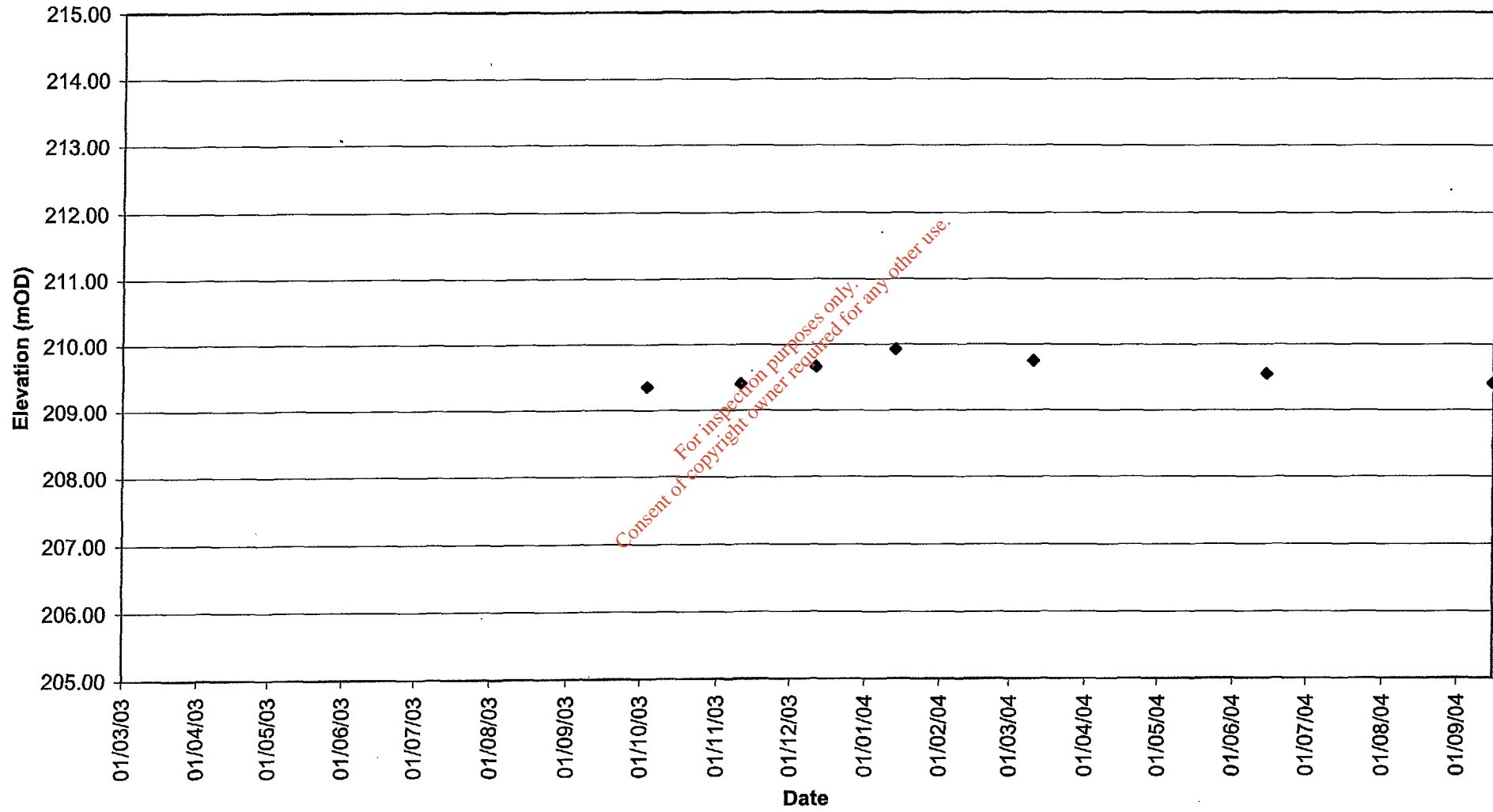
GW 6/6



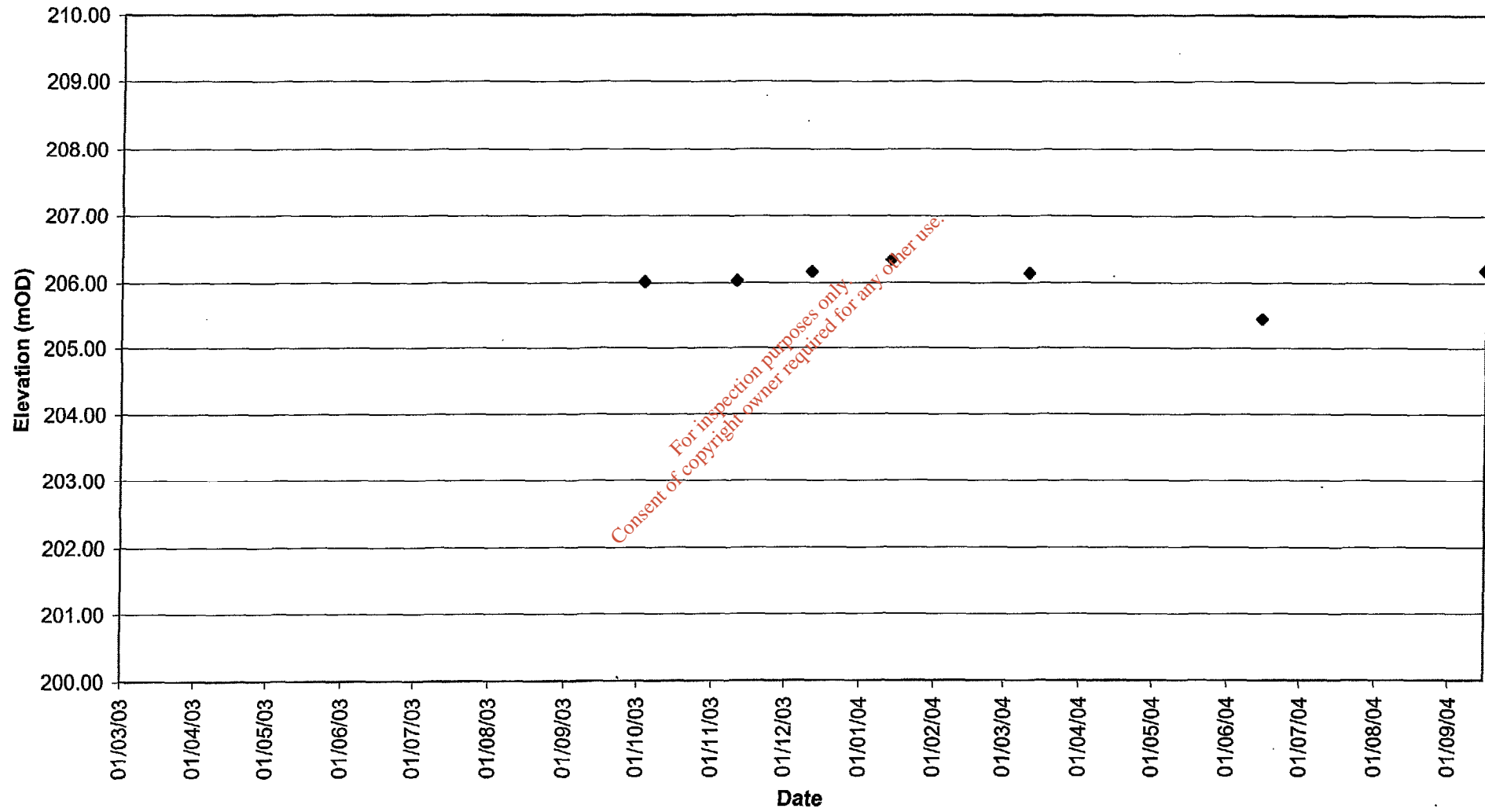
GWR1



GWR2

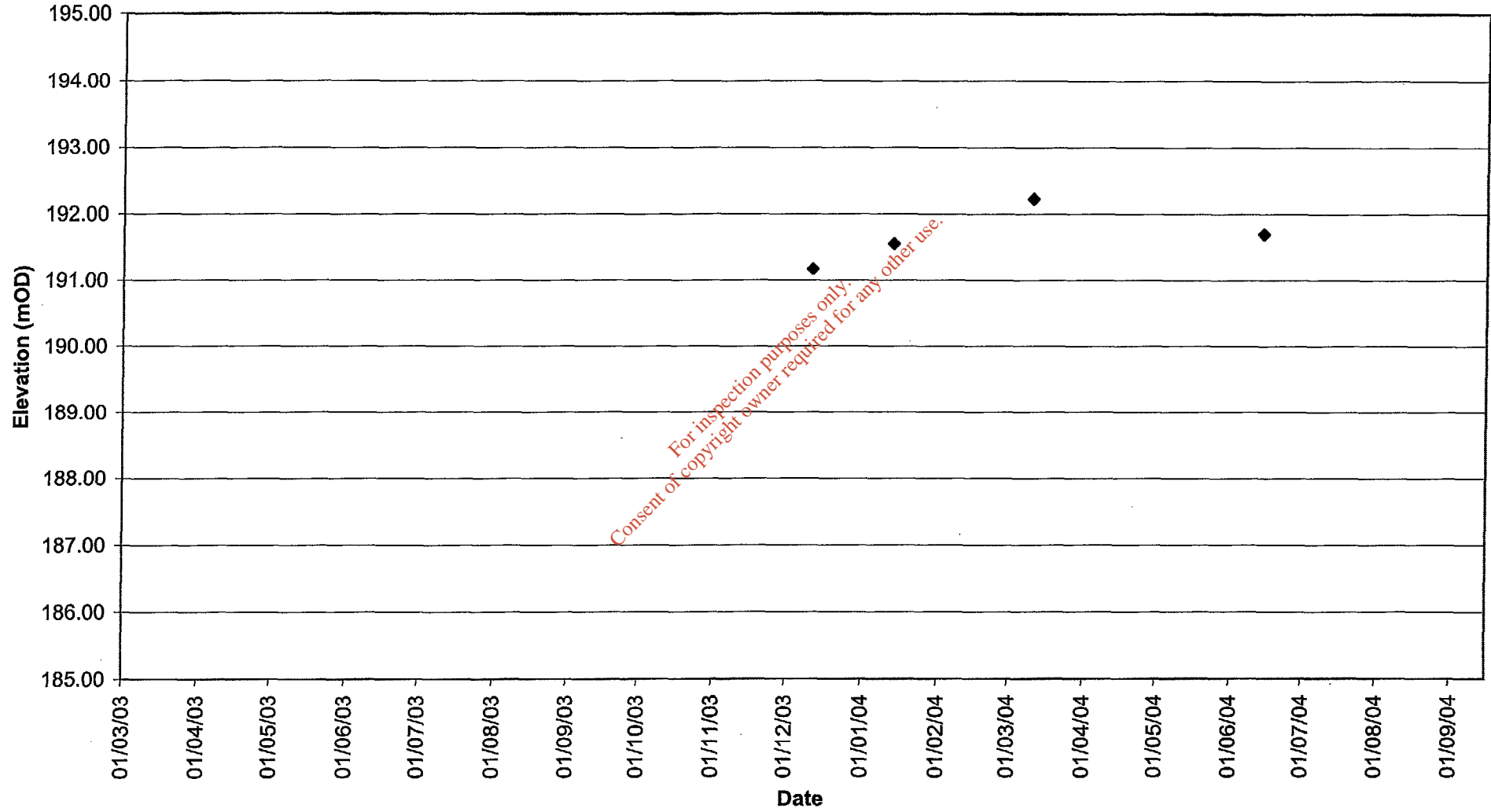


GWR3



For inspection purposes only
Consent of copyright owner required for any other use.

Cookehill GW 1



Pond Near Area 4

