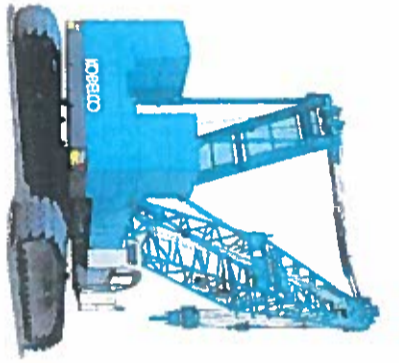


KOBELCO



Kobelco Cranes Europe Ltd

UK CRANE SALES OFFICE

147 The Street, Rushmere St Andrew, Ipswich IP5 1DG

Tel: 44-(0) 1473 - 716302

Fax: 44-(0) 1473 - 716301

Mob: 44-(0) 7887 - 856191

E-mail: andrew_brown@kobelconet.com

Goode Concrete Ltd

7th Lock

Killeen Road

Dublin 10

27 April 2004

Dear Mr Goode,

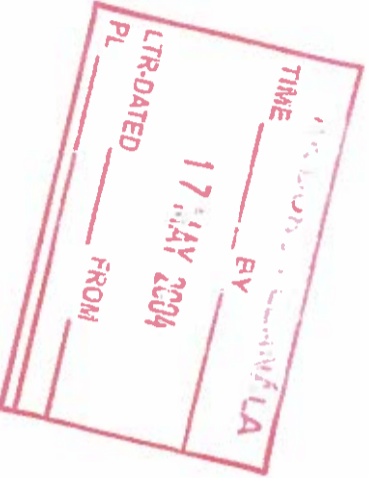
RE: BME750HD Dragline

At Chris Nolan's request this afternoon, please find enclosed two copied of the brochure and specification of the larger dragline we have been talking about over the past months.

Please don't hesitate to ask if you require further information to assist in the planning application.

Yours sincerely;

Andrew M. Brown
UK Sales Manager
Crane Products



For inspection purposes only.
Consent of copyright owner required for any other use.

ANBUH PLEANKLA
BY
TIME 17 MAY 2004
LTR-DATED FROM
PL

ALBUX
CATA

For inspection purposes only.
Consent of copyright owner required for any other use.

CLAMSHELL

BME550HD

Clamshell ratings in metric tons for 360° working area (Crawler fully extended)

(With side load condition) 30% CLEAN (No side load condition)					
Boom length (m)	12.2	15.2	18.3	21.3	24.4
5.0	5.0	5.0	5.0	5.0	5.0
6.0	5.0	5.0	5.0	5.0	5.0
7.0	5.0	5.0	5.0	5.0	5.0
8.0	5.0	5.0	5.0	5.0	5.0
9.0	5.0	5.0	5.0	5.0	5.0
10.0	5.0	5.0	5.0	5.0	5.0
12.0	5.0	5.0	5.0	5.0	5.0
14.0	5.0	5.0	5.0	5.0	5.0
16.0	5.0	5.0	5.0	5.0	5.0
18.0	5.0	5.0	5.0	5.0	5.0
20.0	5.0	5.0	5.0	5.0	5.0
22.0	5.0	5.0	5.0	5.0	5.0

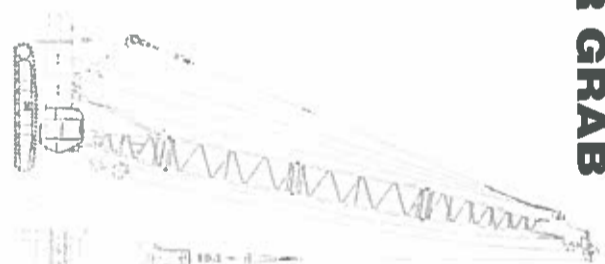
BME750HD

Clamshell ratings in metric tons for 360° working area (Crawler fully extended)

(With side load condition)				(No side load condition)							
Boom length (m)	12.2	15.2	18.3	21.3	24.4	Boom length (m)	12.2	15.2	18.3	21.3	24.4
5.0	5.0	5.0	5.0	5.0	5.0	5.0	5.0	5.0	5.0	5.0	5.0
6.0	5.0	5.0	5.0	5.0	5.0	6.0	10.0	10.0	10.0	10.0	10.0
7.0	5.0	5.0	5.0	5.0	5.0	7.0	10.0	10.0	10.0	10.0	10.0
8.0	5.0	5.0	5.0	5.0	5.0	8.0	10.0	10.0	10.0	10.0	10.0
9.0	5.0	5.0	5.0	5.0	5.0	9.0	10.0	10.0	10.0	10.0	9.8
10.0	5.0	5.0	5.0	5.0	5.0	10.0	10.0	10.0	10.0	10.0	9.4
12.0	5.0	5.0	5.0	5.0	5.0	12.0	10.0	10.0	10.0	9.6	9.0
14.0	5.0	5.0	5.0	5.0	5.0	14.0	10.0	10.0	10.0	9.3	8.6
16.0	5.0	5.0	5.0	5.0	5.0	16.0	6.0	6.2	6.0	9.0	8.2
18.0	5.0	5.0	5.0	5.0	5.0	18.0	6.0	6.2	6.0	8.1	7.8
20.0	5.0	5.0	5.0	5.0	5.0	20.0	6.0	6.2	6.0	7.0	6.9
22.0	5.0	5.0	5.0	5.0	5.0	22.0	6.0	6.2	6.0	6.1	6.1

APPLICATIONS

HAMMER GRAB



RECOMMENDED SPECIFICATION		
MODEL	BME550HD	BME750HD
Boom length (m)	21.3	21.3
Lifting capacity at 7m (t)	22.5	32.6
Bucket rated load (kN)	110	110
Max. line pull (Approx.) (kN)	200	200
Wire rope (mm dia.)	26	26
Power plant (kW)	184	184
Capacity of wire rope by drum layer	1st 42m 2nd 45m	1st 42m 2nd 45m
Suitable layer	1st to 2nd	1st to 2nd

Bucket rated load: Bucket weight + soil

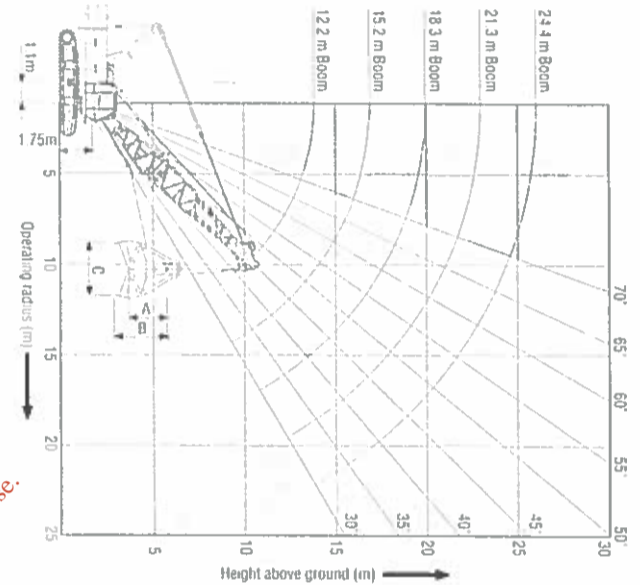
EARTH DRILL



RECOMMENDED SPECIFICATION		
MODEL	BME550HD	BME750HD
Boom length (m)	27.4	27.4
Lifting capacity at 7m (t)	20.8	30.2
Bucket rated load (kN)	110	110
Max. line pull (Approx.) (kN)	200	200
Wire rope (mm dia.)	26	26
Power plant (kW)	184	184
Capacity of wire rope by drum layer	1st 42m 2nd 45m	1st 42m 2nd 45m
Suitable layer	1st to 2nd	1st to 2nd

Bucket rated load: Bucket weight + Kelly-bar weight + soil

WORKING RANGE



Note: 1. Total weight of bucket and materials must not exceed rated load.
Bucket capacity (m³) x Specified gravity of material (t/m³) ≤ Rated load
Bucket weight (t) ≤ Rated load

For inspection purposes only. Consent of copyright owner required for any other use.

CLAMSHELL BUCKET

(Reference only)

Bucket capacity (m³)	Approximate weight (t)	Bucket dimensions (m)		
		A	B	C
1.6	3.2	3.3	3.6	3.0
2.0	3.9	3.5	3.9	3.1
1.25	2.9	3.7	3.7	3.0
1.6	4.8	4.8	4.0	3.2

DRAGLINE

BME550HD

A. Boom length (m)	12.2	15.2	18.3	21.3
0. Boom angle (°)	30	40	50	50
D. Operating radius (m)	11.9	10.7	9.2	14.5
G. Max. digging reach (m)	16.8	15.3	13.3	20.2
Rated load (t)	5.3	7.2	8.7	4.8

BME750HD

A. Boom length (m)	12.2	15.2	18.3	21.3	24.4
0. Boom angle (°)	30	40	50	30	40
D. Operating radius (m)	11.9	10.7	9.2	14.5	13.0
G. Max. digging reach (m)	16.8	15.3	13.3	20.2	18.2
Rated load (t)	9.5	10.9	11.0	7.5	8.5

- Note:
- Dimension G may vary depending on digging conditions and the skill of operator.
 - Dimension H may vary depending on digging material.
 - Dimension E may vary depending on bucket size.
 - Total weight of bucket and materials must not exceed rated load.
- Bucket capacity (m³) x Specified gravity of material (t/m³) + Bucket weight (t) ≤ Rated load

WORKING RANGE



APPLICATIONS

HYDRAULIC DIAPHRAGM WALL BUCKET



RECOMMENDED SPECIFICATION		
MODEL	BME550HD	BME750HD
Boom length (m)	15.2	15.2
Lifting capacity at 7m (ton)	24.5	35.4
Bucket rated line pull (kN)	110	110
Max. line pull (Approx.) (kN)	200	200
Wire rope (mm dia.)	26	26
Power plant (kW)	184	184
Capacity of wire rope by drum layer	1st 42m 2nd 45m	1st 42m 2nd 45m
Suitable layer	1st to 2nd	1st to 2nd

Bucket rated line pull: (Bucket weight + soil) / No. of parts of line

Note: Each application is in general values. It may vary in certain conditions. If you need further information, please consult with our dealer or branch near you.

MAIN BOOM LIFTING CAPACITY

Rated loads in metric tons for 360° working area (Counterweight: 15.8 t)

Boom length m (ft)	12.2 (40)	15.2 (50)	18.3 (60)	21.3 (70)	24.4 (80)	27.4 (90)	30.5 (100)	33.5 (110)	36.6 (120)	39.6 (130)	42.7 (140)	45.7 (150)	48.8 (160)	51.8 (170)
3.0	3.4/55.0													
4.0	51.1	4.1/45.9	4.6/37.4											
5.0	36.5	36.5	34.4	32.3/15	5.7/33.0									
6.0	30.8	29.3	27.9	25.5	6.2/33.5	6.8/20.8								
7.0	24.9	24.5	21.6	20.8	20.0	7.3/18.5			7.8/16.5					
8.0	20.6	20.5	18.7	18.0	17.4	16.8			8.3/14.9					
9.0	17.6	17.4	17.3	17.0	16.4	15.3			14.3					
10.0	15.3	15.0	14.6	14.1	13.7	13.2			12.7					
12.0	11.8/12.2	11.9	11.7	11.5	11.1	10.8			10.4					
14.0	9.7	9.6	9.5	9.4	9.2	9.0			8.7					
16.0	8.0	7.9	7.8	7.7	7.6	7.5			7.4					
18.0	6.8	6.8	6.6	6.5	6.4	6.3			6.2					
20.0	5.7	5.6	5.5	5.4	5.3	5.2			5.1					
22.0	4.9	4.8	4.7	4.6	4.5	4.4			4.3					
24.0	4.3	4.2	4.1	4.0	3.9	3.8			3.7					
26.0	3.7	3.6	3.5	3.4	3.3	3.2			3.1					
28.0	3.1	3.0	2.9	2.8	2.7	2.6			2.5					
30.0	2.8	2.7	2.6	2.5	2.4	2.3			2.2					
32.0	2.3	2.2	2.1	2.0	1.9	1.8			1.7					
34.0	1.9	1.8	1.7	1.6	1.5	1.4			1.3					
36.0	1.6	1.5	1.4	1.3	1.2	1.1			1.0					
38.0	1.4	1.3	1.2	1.1	1.0	0.9			0.8					
40.0	1.1	1.0	0.9	0.8	0.7	0.6			0.5					

Note: 1. Rating according to DIN 15018/3 and prEN 13000.
2. Rating shown in are determined by the strength of the boom or other structural components.
3. Instruction in the operator's manual must be strictly observed when operating the machine.

HEAVY DUTY BASE MACHINE FOR FOUNDATION WORK

BME550HD

BME750HD

Max. Lifting Capacity: 55 t
Max. Boom Length: 51.8 m

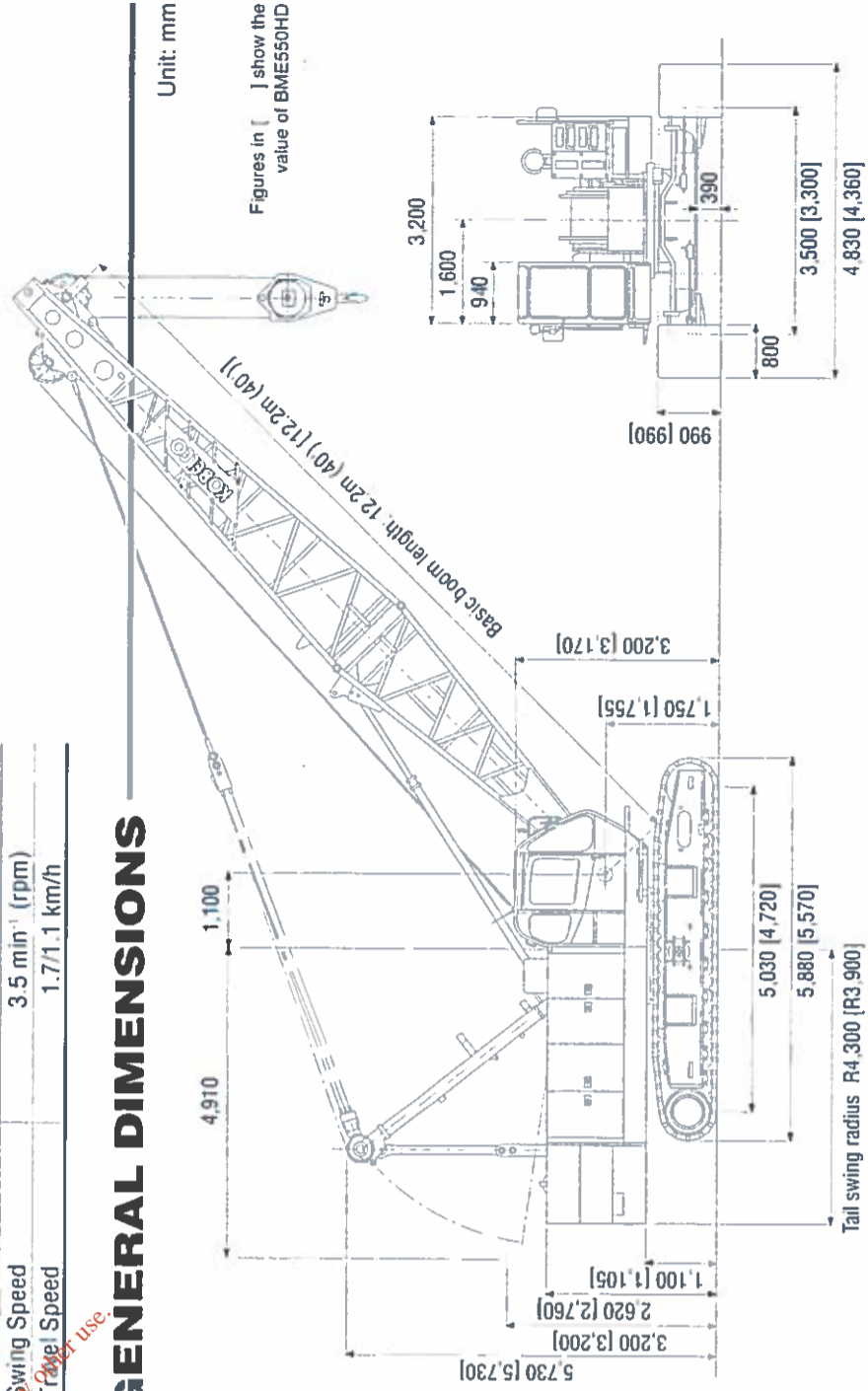
Max. Lifting Capacity: 75 t
Max. Boom Length: 54.9 m
Max. Jib Combination: 42.7 + 18.3 m

S P E C I F I C A T I O N S

Crane Boom	BME550HD	BME750HD
Max. Lifting Capacity	55 t / 3.4 m	75 t / 3.5 m
Max. Length	51.8 m	54.9 m
Crane Jib		
Max. Lifting Capacity	NA	6.6 t
Max. Length	NA	18.3 m
Max. Combination	NA	42.7 m + 18.3 m
Main & Aux. Winch		
Max. Line Speed	100 m/min (1st layer)	
Rated Line Pull	108 kN (11 tf)	
Max. Line Pull	196 kN (20 tf)	
Wire Rope	26 mm	
Wire Rope Length	160 m (Main) 110 m (Aux) 170 m (Main) 125 m (Aux)	
Brake Type	Wet-type multiple-disc brake	
Free-Fall	Standard	
Working Speed		
Swing Speed	3.5 min ⁻¹ (rpm)	
Travel Speed	1.7/1.1 km/h	

Power Plant	BME550HD	BME750HD
Model	Mitsubishi 6D24-TLU2D	
Engine Output	235 kW/2,000 min ⁻¹ (rpm)	
Fuel Tank Capacity	400 liters	
Hydraulic System		
Main Pumps	3 variable displacement	
Max. Pressure	30.9 MPa (315 kgf/cm ²)	
Hydraulic Tank Capacity	520 liters	
Weight		
Operating Weight	Approx. 53.0 t	Approx. 69.0 t
Counterweight	15.8 t	22.9 t
Transport Weight	35.9 t	43.9 t
	(Main machine with crawler and lower boom)	
Ground Pressure	68 kPa (0.69 kgf/cm ²) 78 kPa (0.80 kgf/cm ²)	

GENERAL DIMENSIONS



BME550HD

Crawlers fully extended

BME750HD

Crawlers fully extended

Boom length m (ft)	12.2 (40)	15.2 (50)	18.3 (60)	21.3 (70)	24.4 (80)	27.4 (90)	30.5 (100)	33.5 (110)	36.6 (120)	39.6 (130)	42.7 (140)	45.7 (150)	48.8 (160)	51.8 (170)	54.9 (180)
3.0	3.7/50														
4.0	69.5	4.1/67.5	4.6/54.6												
5.0	56.2	52.9	50.1	52.4/57	5.7/39.1										
6.0	44.7	42.5	40.5	36.7	37.0	6.2/34.1	6.8/30.2								
7.0	36.0	35.4	33.9	32.6	31.3	30.2	29.1	7.3/26.9	7.8/24.2						
8.0	29.8	29.6	29.1	28.1	27.0	26.2	25.3	24.4	23.6	8.3/21.9	8.9/19.8				
9.0	25.3	25.1	25.0	24.6	23.8	23.0	22.3	21.6	20.9	20.3	19.6	18.9	18.2	17.5	16.6
10.0	22.0	21.8	21.7	21.5	21.1	20.5	19.9	19.3	18.7	18.1	17.5	17.1	16.6	16.1	15.5
12.0	17.4	17.1	17.0	16.9	16.7	16.3	15.8	15.3	14.8	14.4	14.1	13.7	13.2	12.8	12.4
14.0	14.1	13.9	13.8	13.6	13.4	13.3	12.9	12.5	12.1	11.8	11.5	11.1	10.8	10.4	10.0
16.0	11.5	11.4	11.3	11.2	11.1	11.0	10.7	10.3	10.1	9.8	9.5	9.2	8.9	8.6	8.3
18.0	9.9	9.7	9.6	9.5	9.4	9.3	9.2	9.1	9.0	8.9	8.8	8.7	8.6	8.5	8.4
20.0	8.4	8.3	8.2	8.1	8.0	7.9	7.9	7.7	7.6	7.5	7.4	7.3	7.2	7.1	7.0
22.0	7.4	7.3	7.2	7.1	7.0	6.9	6.8	6.8	6.6	6.5	6.5	6.4	6.3	6.2	6.1
24.0	6.5	6.4	6.2	6.1	6.0	5.9	5.8	5.7	5.6	5.5	5.5	5.4	5.3	5.2	5.1
26.0	5.7	5.6	5.5	5.4	5.3	5.2	5.1	5.0	4.9	4.8	4.7	4.6	4.5	4.4	4.3
28.0	4.9	4.8	4.7	4.6	4.5	4.4	4.3	4.2	4.1	4.0	3.9	3.8	3.7	3.6	3.5
30.0	4.4	4.3	4.2	4.1	4.0	3.9	3.8	3.7	3.6	3.5	3.4	3.3	3.2	3.1	3.0
32.0	3.9	3.8	3.7	3.6	3.5	3.4	3.3	3.2	3.1	3.0	2.9	2.8	2.7	2.6	2.5
34.0	3.4	3.3	3.2	3.1	3.0	2.9	2.8	2.7	2.6	2.5	2.4	2.3	2.2	2.1	2.0
36.0	3.0	2.9	2.8	2.7	2.6	2.5	2.4	2.3	2.2	2.1	2.0	1.9	1.8	1.7	1.6
38.0	2.6	2.5	2.4	2.3	2.2	2.1	2.0	1.9	1.8	1.7	1.6	1.5	1.4	1.3	1.2
40.0	2.2	2.1	2.0	1.9	1.8	1.7	1.6	1.5	1.4	1.3	1.2	1.1	1.0	0.9	0.8
42.0	1.8	1.7	1.6	1.5	1.4	1.3	1.2	1.1	1.0	0.9	0.8	0.7	0.6	0.5	0.4
44.0	1.5	1.4	1.3	1.2	1.1	1.0	0.9	0.8	0.7	0.6	0.5	0.4	0.3	0.2	0.1
46.0	1.3	1.2	1.1	1.0	0.9	0.8	0.7	0.6	0.5	0.4	0.3	0.2	0.1	0.0	0.0
48.0	1.1	1.0	0.9	0.8	0.7	0.6	0.5	0.4	0.3	0.2	0.1	0.0	0.0	0.0	0.0

Note: 1. Rating according to DIN 15018/3 and prEN 13000.
2. Rating shown in are determined by the strength of the boom or other structural components.
3. Instruction in the operator's manual must be strictly observed when operating the machine.



Note: Due to our policy of continual product improvements all designs and specifications are subject to change without advance notice.

KOBELCO CRANES CO., LTD.

17-1, Higashi-Gotanda 2-chome, Shinagawa-ku, TOKYO, 141-8626 JAPAN
Tel: ++81 (0) 3-5789-2130 Fax: ++81 (0) 3-5789-3372

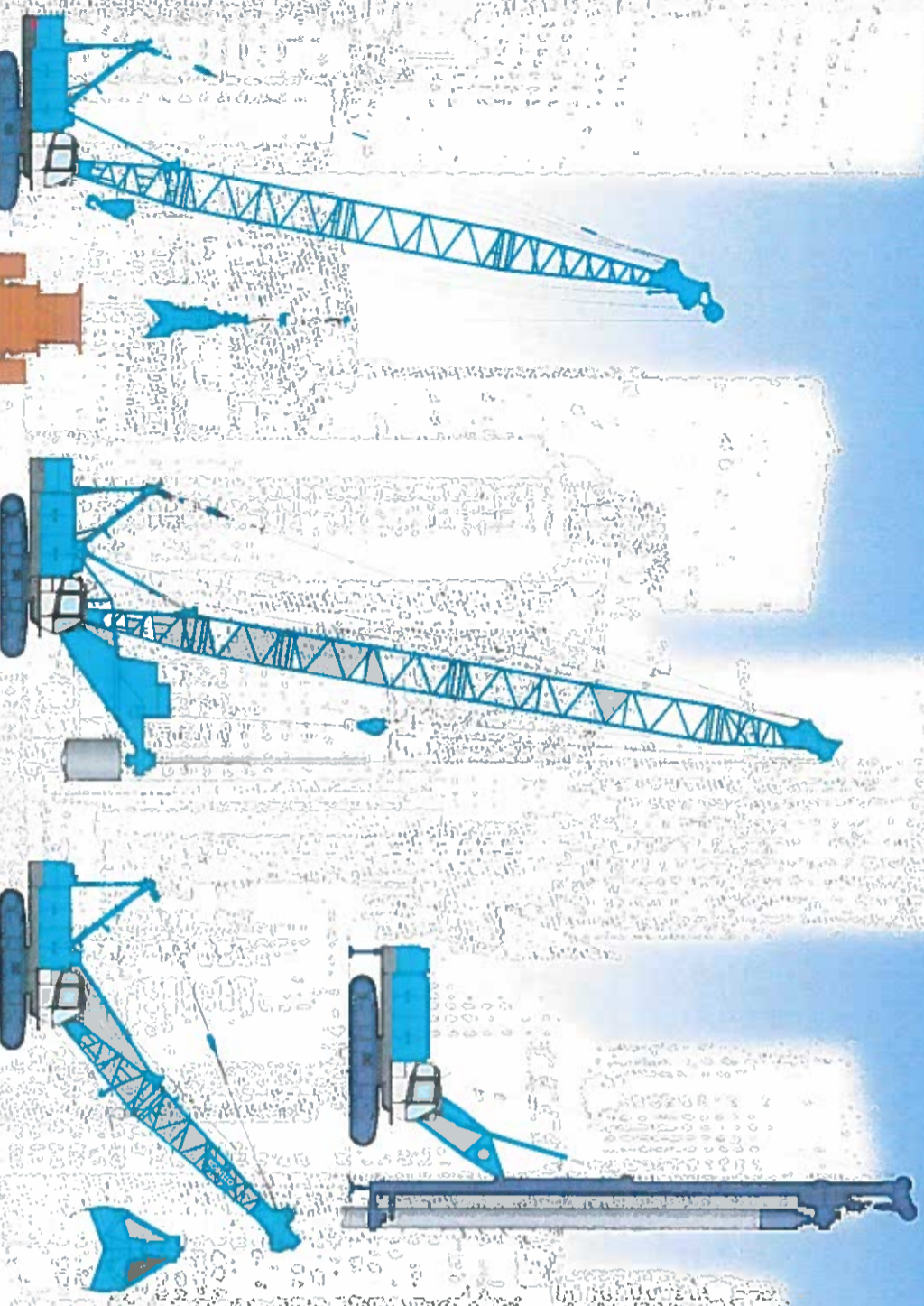
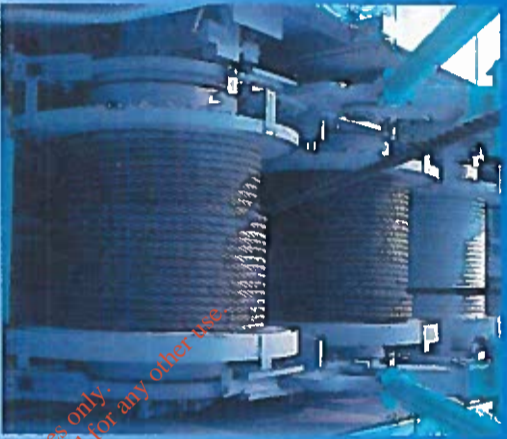
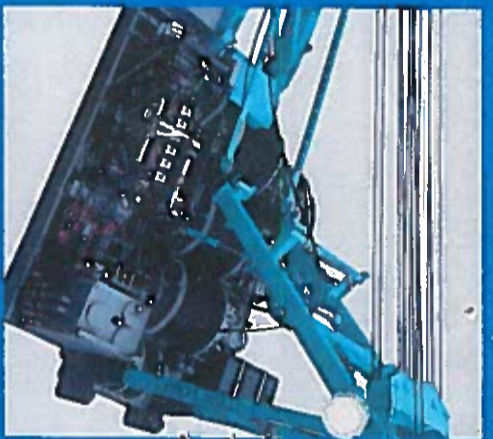
Bulletin No. BME550HD/BME750HD-S401

04031000 Printed in Japan

KOBELCO CRANES CO., LTD.

A NEW GENERATION OF BASE MACHINES FOR HEAVY-DUTY FOUNDATION WORK

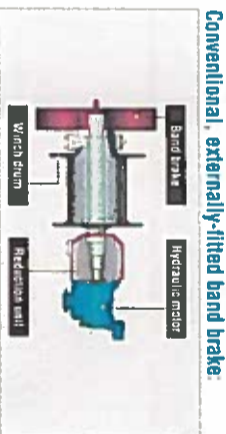
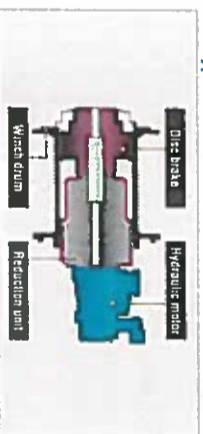
Heavy-duty reliability from wet-type disc brakes. Powerful and large capacity drums to handle any job with power to spare. Drawing on long experience in crane manufacture, KOBELCO researched the bottom line in boosting operating efficiency in civil engineering and foundations work, and has unveiled a new generation of base machines. The BME550HD/BME750HD feature power and precision in operations, simple controls and comprehensive safety features. Economic to run, easy to transport, kind to operator and environment alike. In every respect the BME550HD/BME750HD deliver a performance that sets new standards for heavy-duty foundation work.



PERFORMANCE

Innovative Wet-Type Disc Brake System

KOBELCO's new oil cooled wet-type multi-disc brake system is first in its class and provides quiet, dependable braking power. Multiple discs are self-adjusting and self-equalizing. Forced oil circulation keeps brake temperatures cooler during long, continuous operations and maximizes smooth brake operation. The completely enclosed system eliminates the possibility of outside contamination, providing years of problem-free service life. The low brake pedal effort reduces operator fatigue when the machine is working in the optional free-fall mode.



CONTROLS & CAB

Roomy, Comfortable Cab

Operator comfort is ensured by vibration-reducing rubber cab mounts, a fully adjustable, upholstered seat, and an air conditioner with fresh-air vents. Reinforced tinted glass windows reduce glare, and the semi-short levers and other control devices are ergonomically located and arranged for easy control.

Precise Operation with Responsive Control

Full-hydraulic technology delivers quick, efficient operation with excellent precision. Pilot pressure-assisted control allows you to control the speed and power of each function in proportion to lever movement.



Free-Fall and Power Lowering

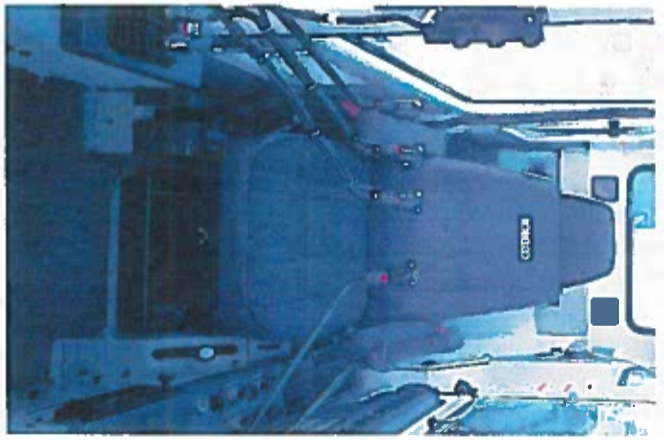
A choice of either power lowering mode or free-fall mode can be selected for the winch drum according to requirements.

Inching Control Switch

The red switch on the boom lever grip allows easy inching control for hoist, boom hoist, and travel that the operator can activate without taking his hands off the boom hoist lever.

Drum Speed Controller

Speeds for main winch, auxiliary winch and boom hoist can be set independently with trimmer controls.

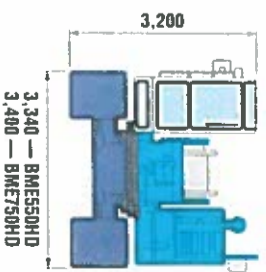


TRANSPORTATION

Electric Throttle Control
Sensitive engine control is assured by an electric throttle with a twist grip.

Transportation

An overall width of less than 3.4 m and an overall transporting height of 3.2 m (base machine), help reduce transportation cost.



Assembly/Disassembly

- Boom and guy cables are connected easily, and upper spreader features automatic stowing for disassembly.
- Gantry hoist cylinder is supplied as standard to simplify gantry raising.
- Counterweight devices horizontally for easy assembly, disassembly and transport.
- Double-tapered connecting pins for bottom of lower boom.

Hydraulic Outlet (Option)

12 pairs of hydraulic outlet are available.

No. of pumps	Two	One	One	One
No. of pair of ports	1	1	1	9
Max pressure MPa	30.9	30.9	7.8	20.5
Max. oil flow (liters/min)	460	200	73	73
Pump Input Power (kW)	162	71	10	29



SAFETY

Load Moment Indicator System

An easy-to-read LCD display is installed with the overload prevention mechanism indicating rated and actual loads and other useful data. The smooth-stop device prevents dangerous swaying of the boom due to sudden automatic stops.



Function Lock Lever

Function lock lever prevents accidental operation when the operator enters or leaves the cab.



Key-Controlled Release Switches

Safety enhancing mechanisms can be individually engaged or cancelled for specific operational needs by using these keys such as free-fall operation and safety function. These keys can be kept by safety officer to prevent any human-error.



Free-Fall Control Switches

The free-fall control switches, strategically located on the hoist levers, allow the operator to engage free-fall whenever desired without removing his hands from the control levers.



Swing Flashers

Swing flashers and a warning buzzer alert in vicinity when the machine is swinging.

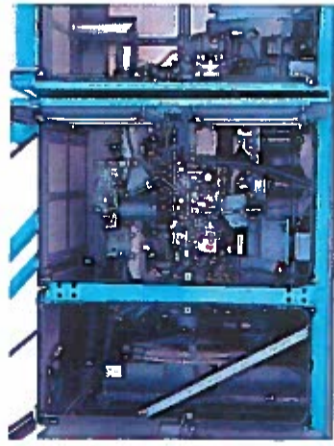
SIMPLIFIED MAINTENANCE

Multi-Display

The easy-to-read LCD multi-display provides current status information on such functions as engine rpm, maintenance and on-board troubleshooting, providing the operator with an ongoing real-time assessment of the machine's conditions at a glance.

Easy Maintenance

The new engine layout means that just opening the power plant cover gives ready access for checks and servicing.



STANDARD EQUIPMENT

Main Machine

- Boom hoist pedal • Air conditioner
- Free-fall function for main and aux. winch

Safety Device

- Drum safety pawl • Boom backstops
- Boom over hoist auto-stop device
- Hook over hoist auto-stop device
- Swing lock pin • Signal horn
- Overload alarm lamp • Cab top guard
- Fire extinguisher

Transportation

- Retractable crawlers
- Gantry cylinder

Others

- Electric fuel pump • Tool kits
- Operator's manual

OPTIONAL EQUIPMENT

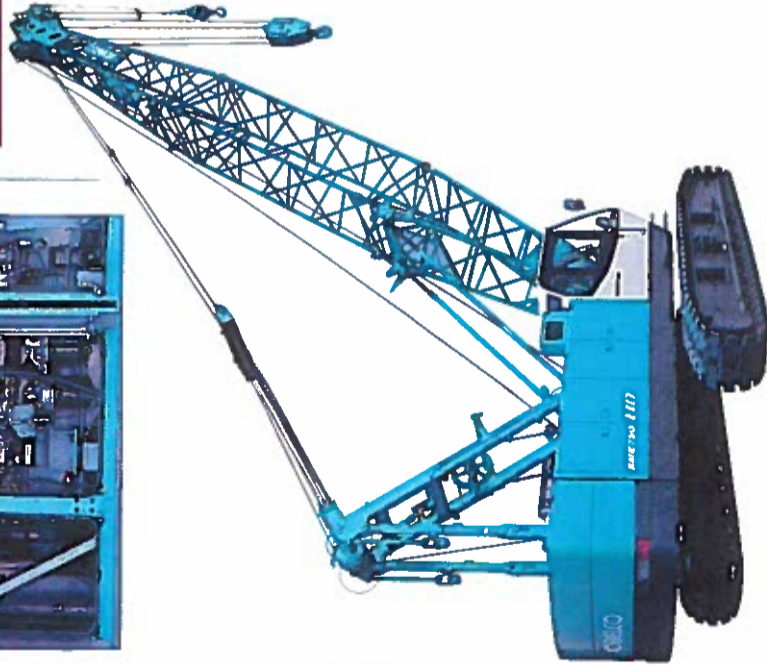
Main Machine

- Drum rotation indicator (front and rear drum)
- Third drum
- Hydraulic tagline
- Hydraulic outlet
- Electric fan
- Foot throttle
- One way call
- Service platform for machine room

Attachment

- Insert boom
- Hook
- Auxiliary sheave
- Fixed jib (BME750HD)

Consent of copyright owner required for any other use.
For inspection purposes only.



KOBELCO

HEAVY DUTY BASE MACHINE FOR FOUNDATION WORK

BME550HD

Max. Lifting Capacity: 55.0 t at 3.4 m

Max. Boom Length: 51.8 m

BME750HD

Max. Lifting Capacity: 75.0 t at 3.5 m

Max. Boom Length: 54.9 m

Max. Fixed Jib Combination: 42.7 + 18.3 m

Note: This catalog may contain photographs of machines with specifications, attachments and optional equipment not certified for operation in your country. Please consult KOBELCO for those items you may require. Due to our policy of continual product improvements all designs and specifications are subject to change without advance notice.
Copyright by KOBELCO CONSTRUCTION MACHINERY CO., LTD. No part of this catalog may be reproduced in any manner without notice.



KOBELCO CONSTRUCTION MACHINERY CO., LTD.

17-1, Higashigotanda 2-chome, Shinagawa-ku, Tokyo, 141-8626 JAPAN
Tel: ++81 (0) 3-5789-2121 / Fax: ++81 (0) 3-5789-2134

KOBELCO Construction Machinery (Europe) B.V.

Bolderweg 50, 1332 AW Almere, The Netherlands
Tel: 31-36-5495500 (5563) Fax: 31-36-5495558
<http://www.kobelco.nl>

Inquiries To: