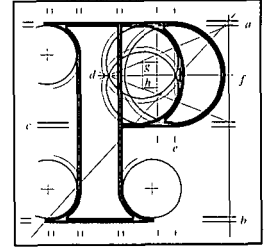


Our Ref: PA0018  
Your Ref: W0129-03

An Bord Pleanála



**Administration Team  
Environmental Licensing Programme  
Office of Climate, Licensing and Resource Use  
Environmental Protection Agency  
PO Box 3000  
Johnstown Castle Estate  
Co. Wexford**

Date: 21<sup>st</sup> May 2014

**Re:** Integrated waste management facility for the acceptance and landfilling of non-biodegradable inert, non-hazardous and hazardous Waste at Hollywood Great, Nag's Head, Naul, Co. Dublin.


Dear Sir/Madam,

I have been asked by An Bord Pleanála to refer to your letter dated the 16<sup>th</sup> May 2014, requesting observations in relation to the above-mentioned application for an Industrial Emissions Licence pursuant to the provisions of the European Union (Environmental Impact Assessment) (Integrated Pollution Prevention and Control) Regulations 2012.

The Board will revert to you on this matter as soon as possible.

If you have any queries in relation to this matter please contact the undersigned officer of the Board.

Yours sincerely,

  
Kieran Somers  
Executive Officer  
01-8737107

Ref: EPA.Sbord

